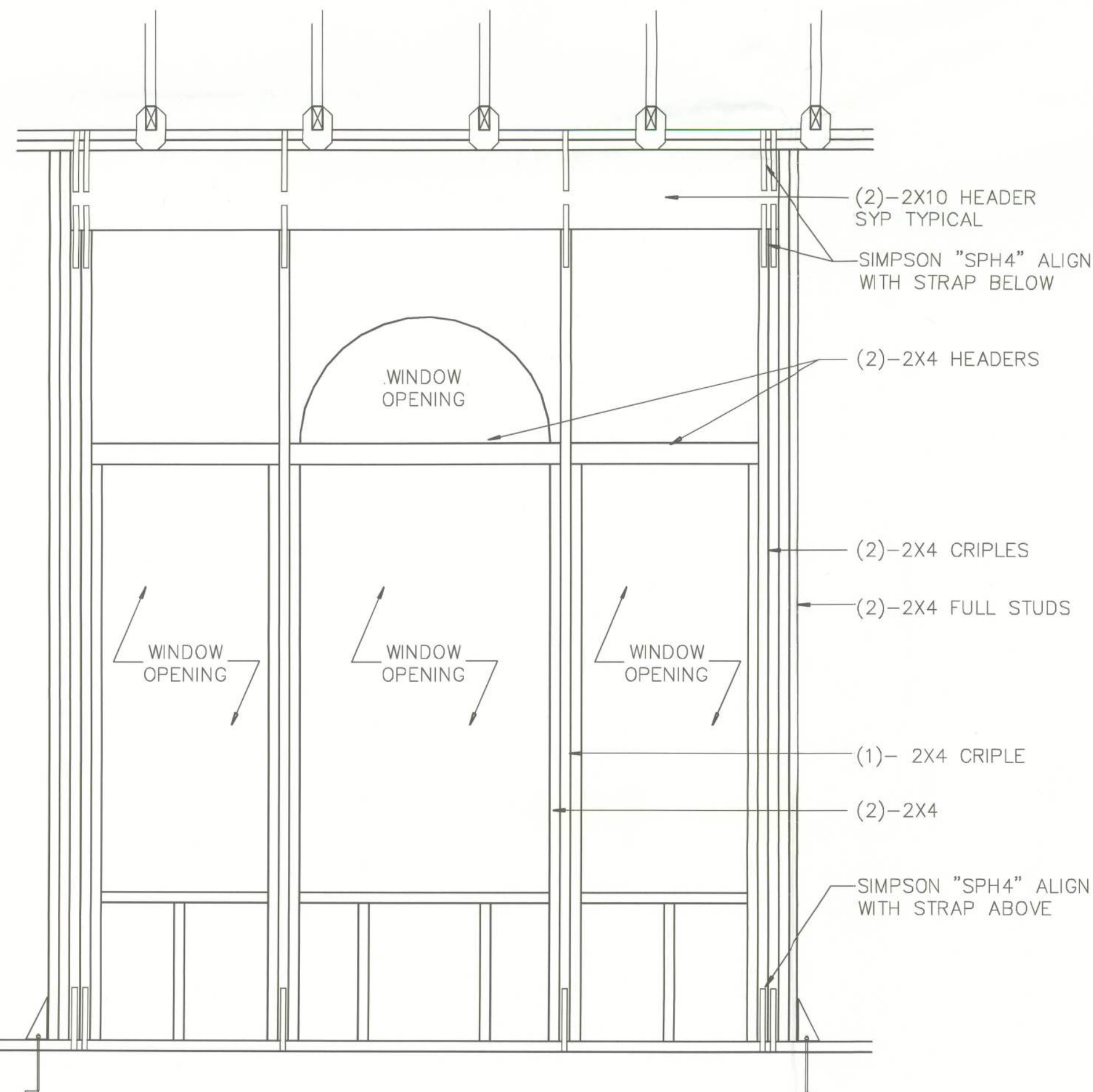


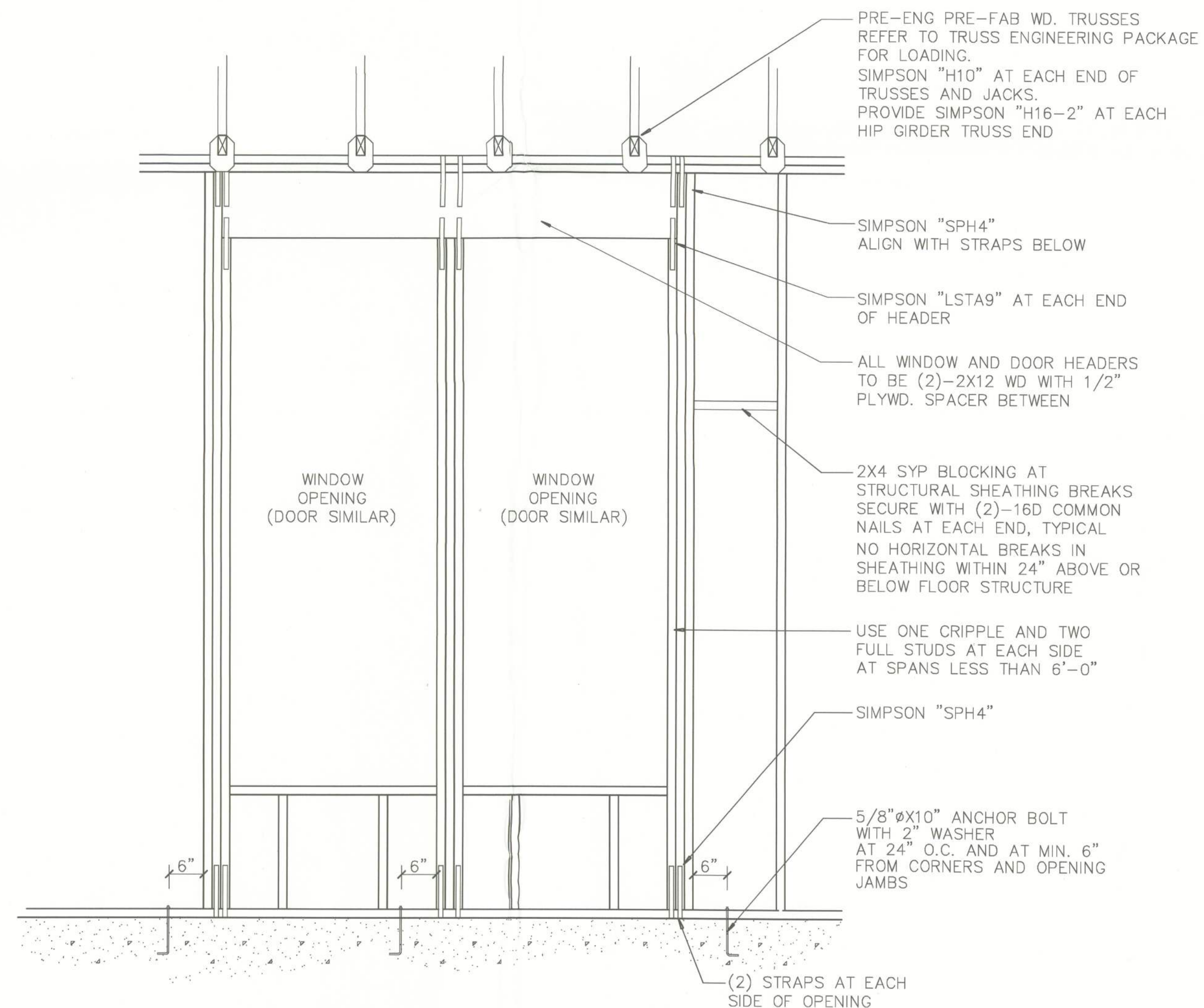
CONTRACTOR TO VERIFY THAT BOTTOM PLATE P.T. CHEMICALS WILL NOT AFFECT OR CORRODE ANCHOR BOLTS, STRAPS OR NAILS.
ALL GIRDER TRUSSES TO RECEIVE A MINIMUM OF (2) FULL STUDS DIRECTLY BELOW, OR AS NOTED ON PLANS.

TYPICAL WALL SECTION
3/4"=1'-0"



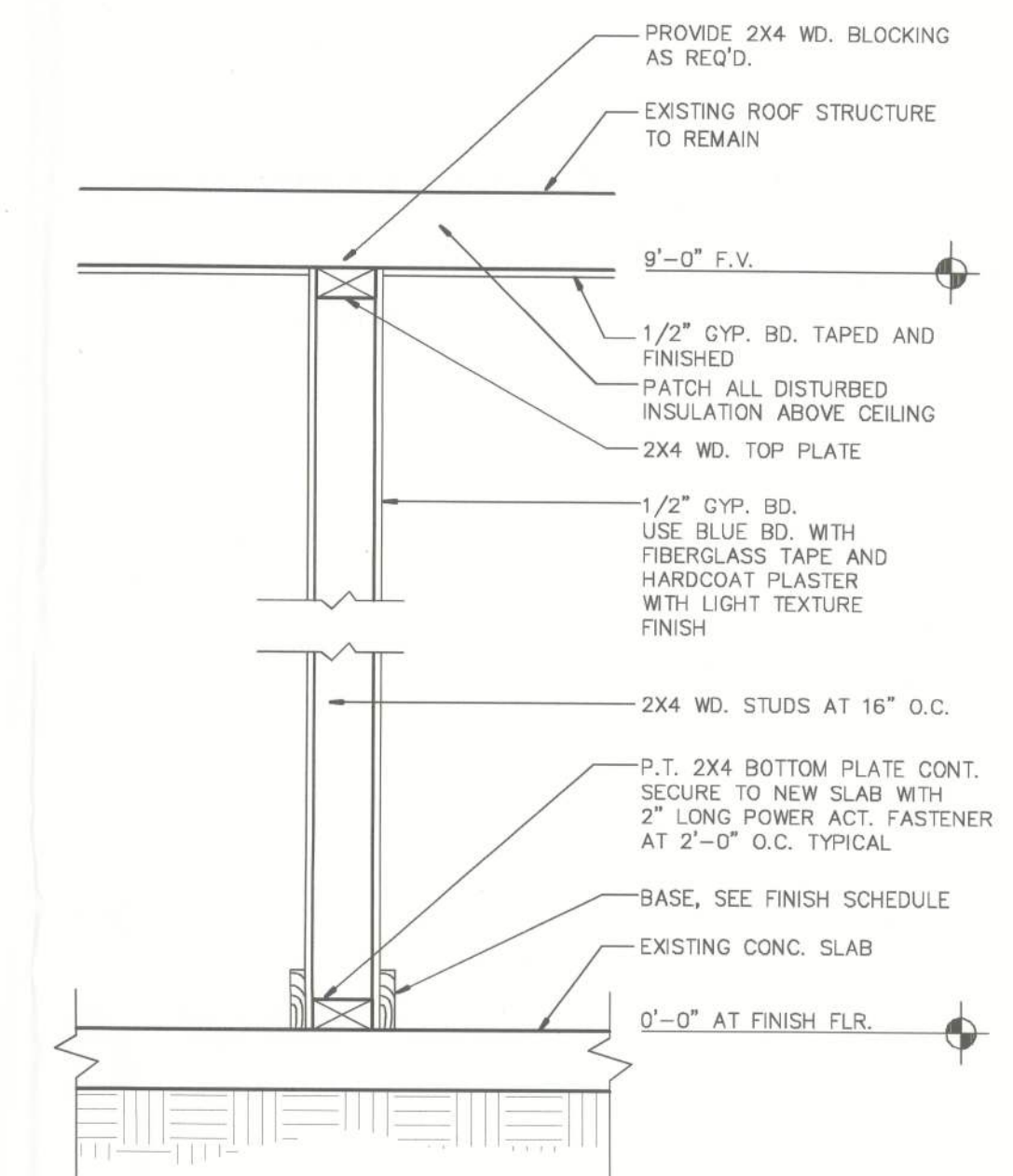
TOP PLATES AND HEADERS TO BE SOUTHERN YELLOW PINE
BEDROOM #4 WINDOW DETAIL

N.T.S.



TOP PLATES AND HEADERS TO BE SOUTHERN YELLOW PINE
DOUBLE WINDOW OPENING DETAIL

N.T.S.



INTERIOR NON-BEARING WALL SECTION
1"=1'-0"