

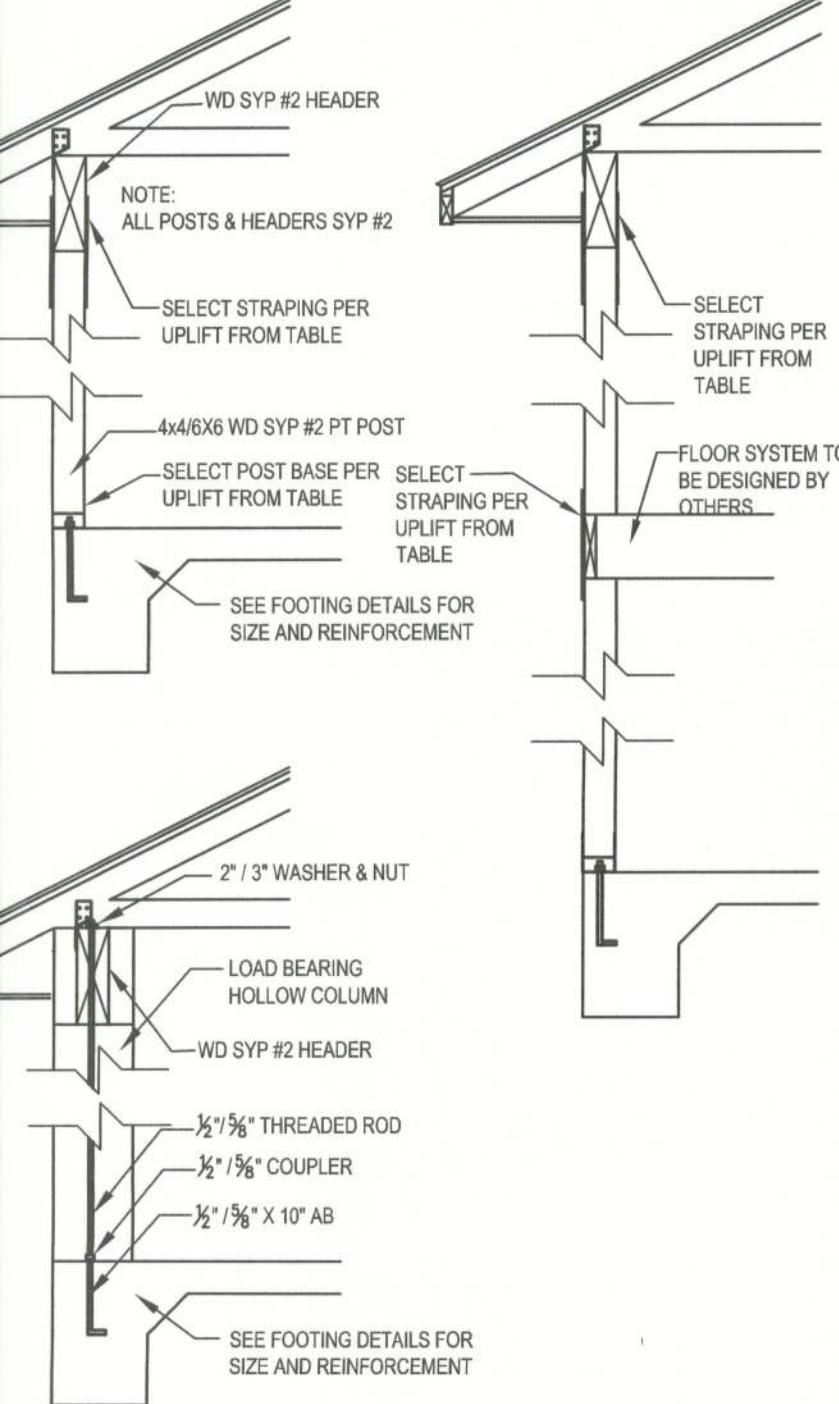
**STUD ANCHOR TABLE**

TYPICAL TRUSS UPLIFT & ANCHOR BOLT SPACING	SP4 / SP5 SPACING	ALTERNATE SPACING
770 LB	48" O.C.	NA
950 LB	48" O.C.	NA
1270 LB	32" O.C.	32" O.C.
1500 LB	24" O.C.	18" O.C.
2200 LB	LTT11 W/ 58" X 7" WEDGE ANCHOR	(2) HTS20 NAILED TO STUD PACK

NOTE: SP2 TOP & SP1 BOTTOM ALTERNATE FOR SP4/6

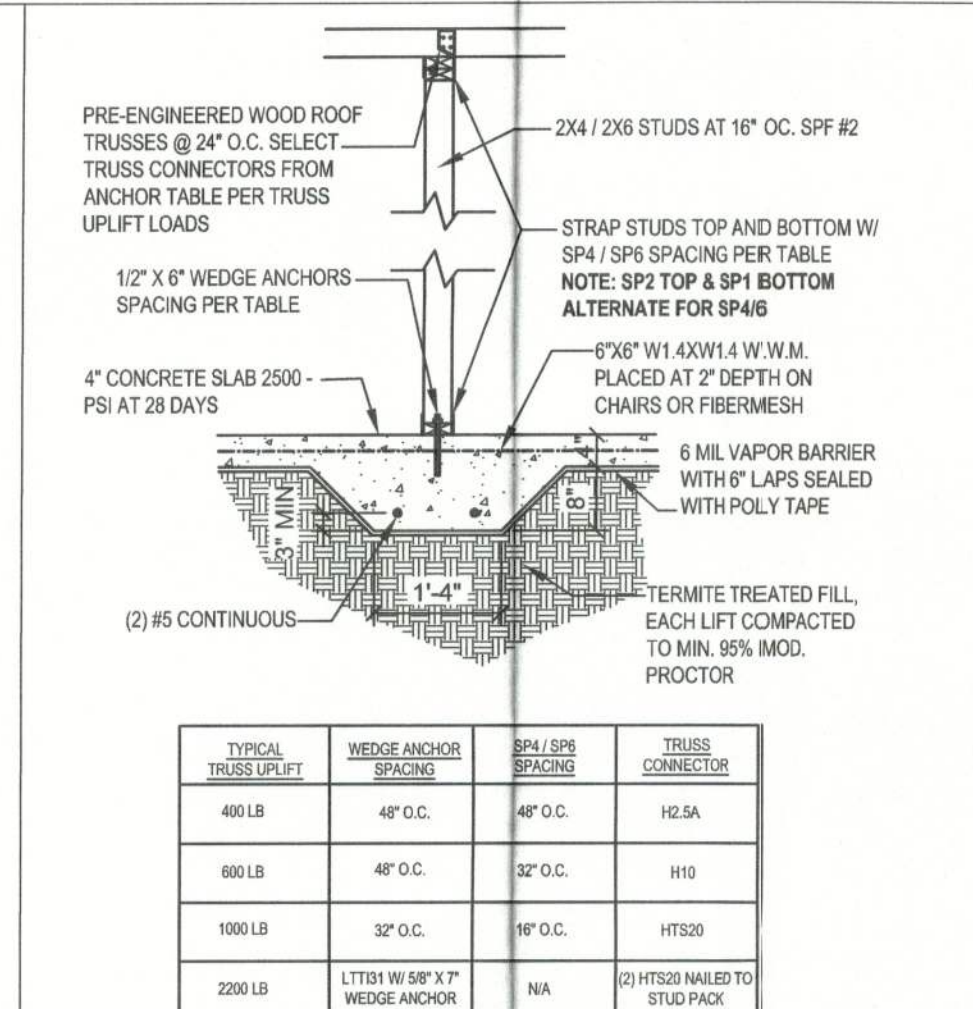
NOTE: MINIMUM ANCHOR BOLT SPACING FOR WALLS WITH A HEIGHT GREATER THAN 10'-0" AND LESS THAN 14'-0" SHALL BE 32" O.C.

W1 - SINGLE STORY EXT. WALL SECTION  
SCALE: 1/2"=1'-0" REV-22-AUG-03

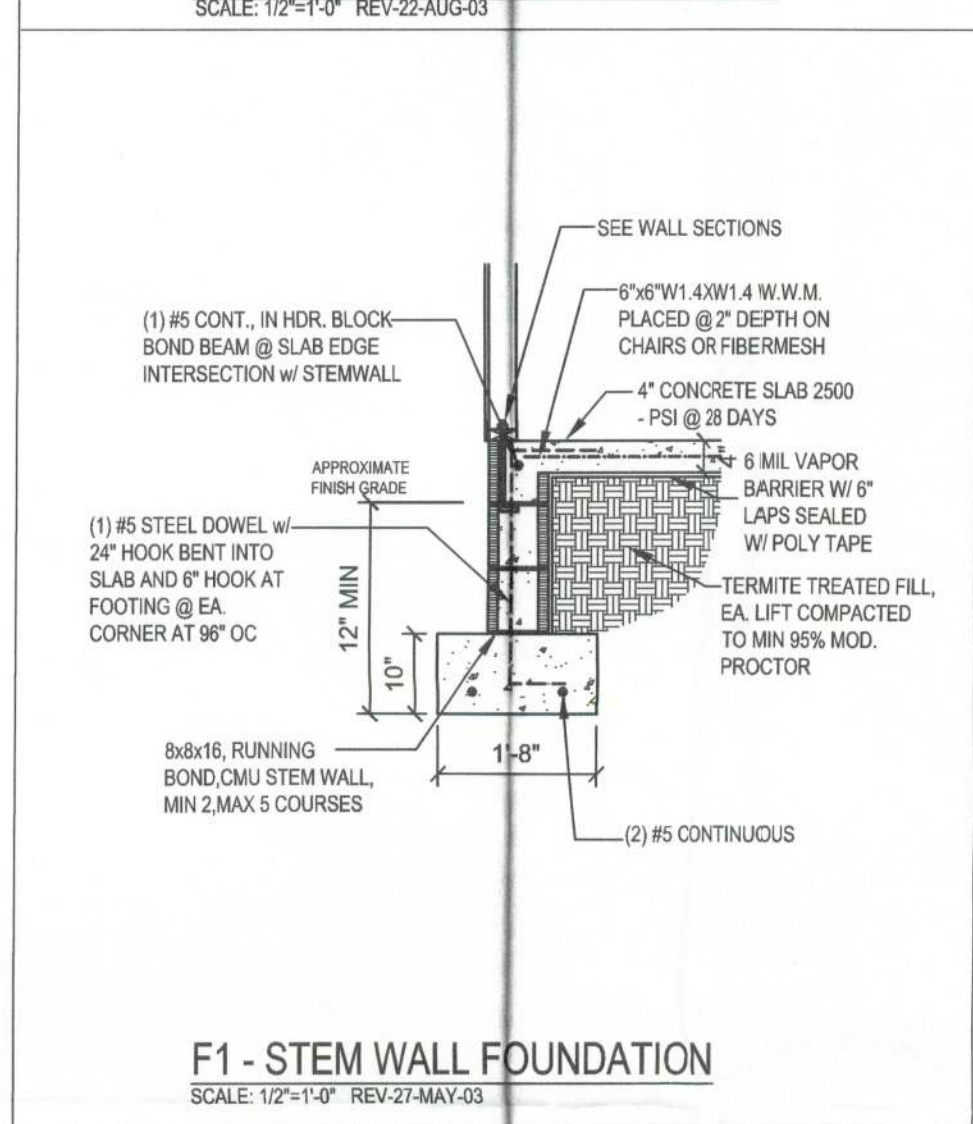


SYP #2 PT W/ POSTS			
TYPICAL POST UPLIFT	POST BASE ANCHOR	BETWEEN FLOOR STRAPPING	HEADER STRAPPING
555 LB	AS44 W/ (8)-104 & 1/2" EA	(2) AS41 W/ (6)-104 EA	(2) LST41 W/ (6)-104 EA
720 LB	AS46 W/ (8)-164 & 3/4" EA	(2) LST41 W/ (6)-104 EA	(2) LST41 W/ (6)-104 EA
2200 LB	AS44 W/ (12)-164 & 3/4" BOL TS & 3/4" EA	(2) LST41 W/ (16)-104 EA	(2) LST41 W/ (16)-104 EA
2300 LB	AS46 W/ (12)-164 & 3/4" BOL TS & 3/4" EA	(2) LST41 W/ (16)-104 EA	(2) LST41 W/ (16)-104 EA
HOLLOW COLUMN			
1500 LB	1/2" x 10" AB ATTACHED TO 2" THREADED ROD WITH 3/4" COUPLER THRU COLUMN & HEADER WITH 2" WASHER & NUT TOP		
2300 LB	3/4" x 10" AB ATTACHED TO 2" THREADED ROD WITH 3/4" COUPLER THRU COLUMN & HEADER WITH 3" WASHER & NUT TOP		

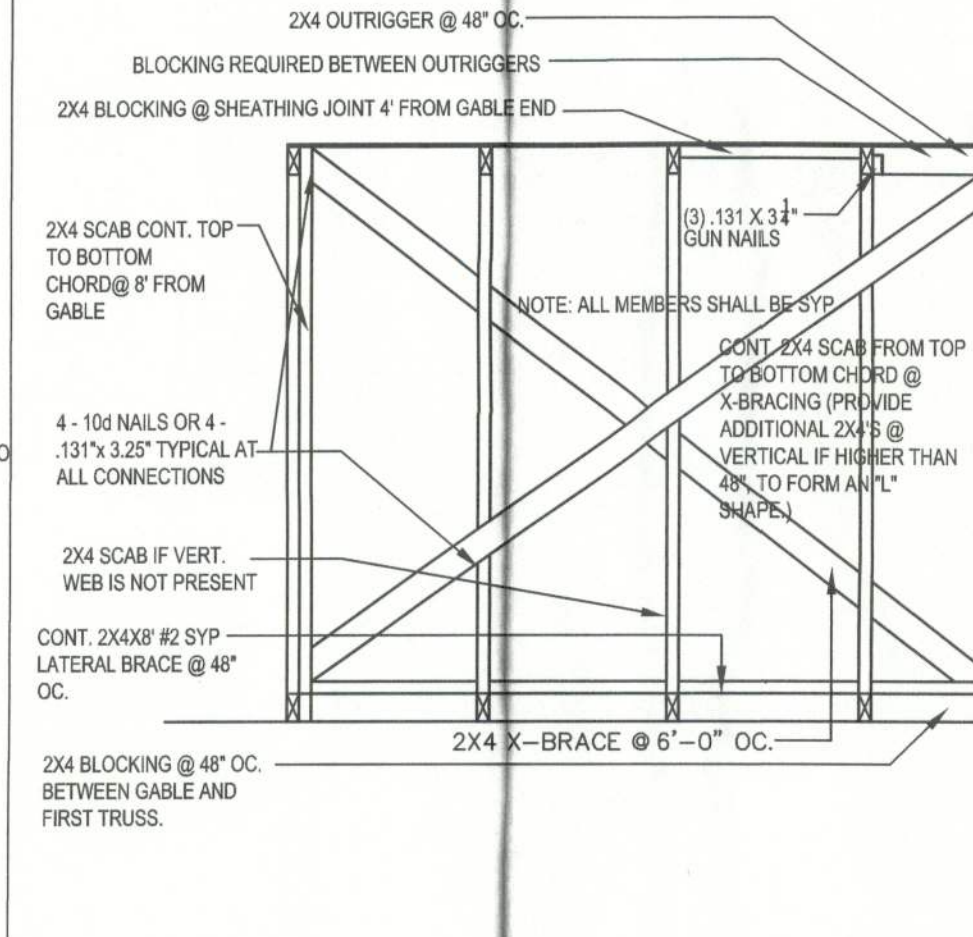
W12 - PORCH HEADER ANCHORS  
SCALE: N.T.S. REV-18-JUL-03



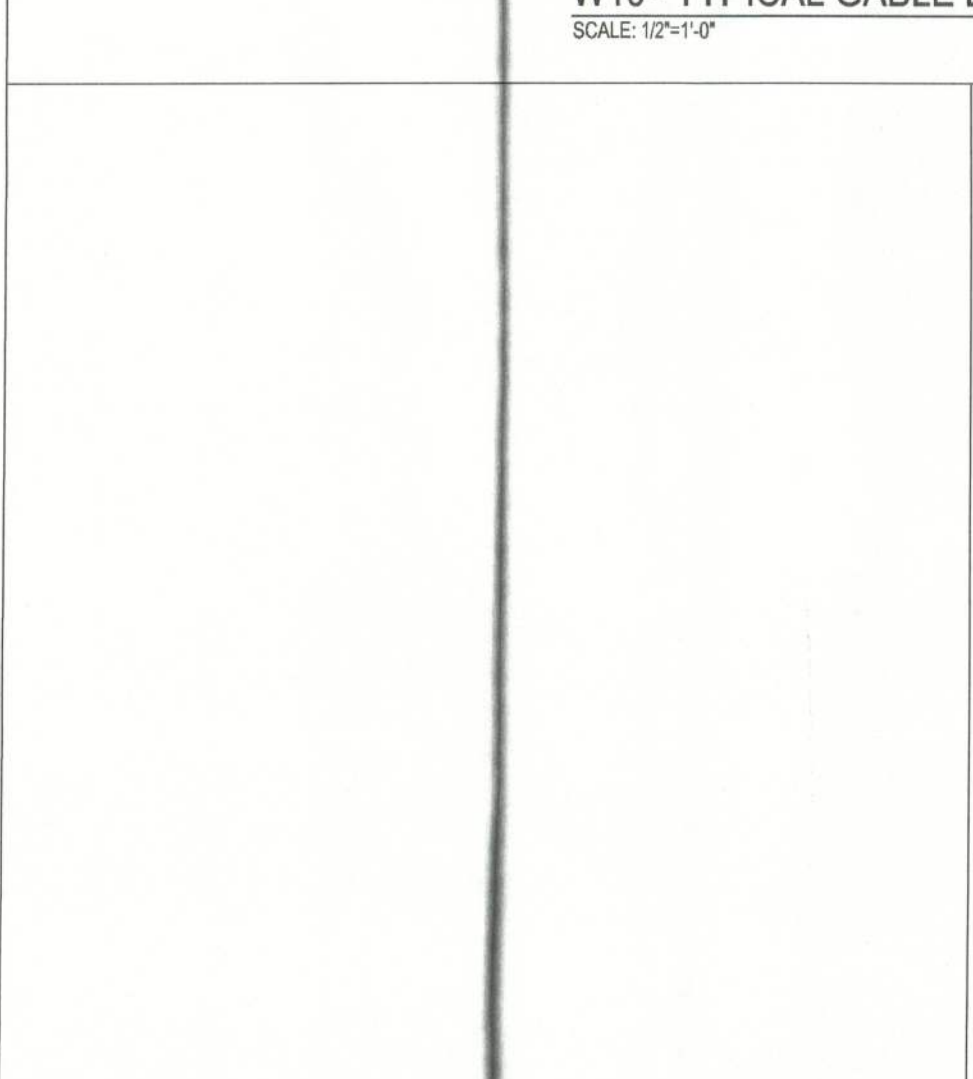
F4 - INTERIOR BEARING FOOTING  
SCALE: 1/2"=1'-0" REV-22-AUG-03



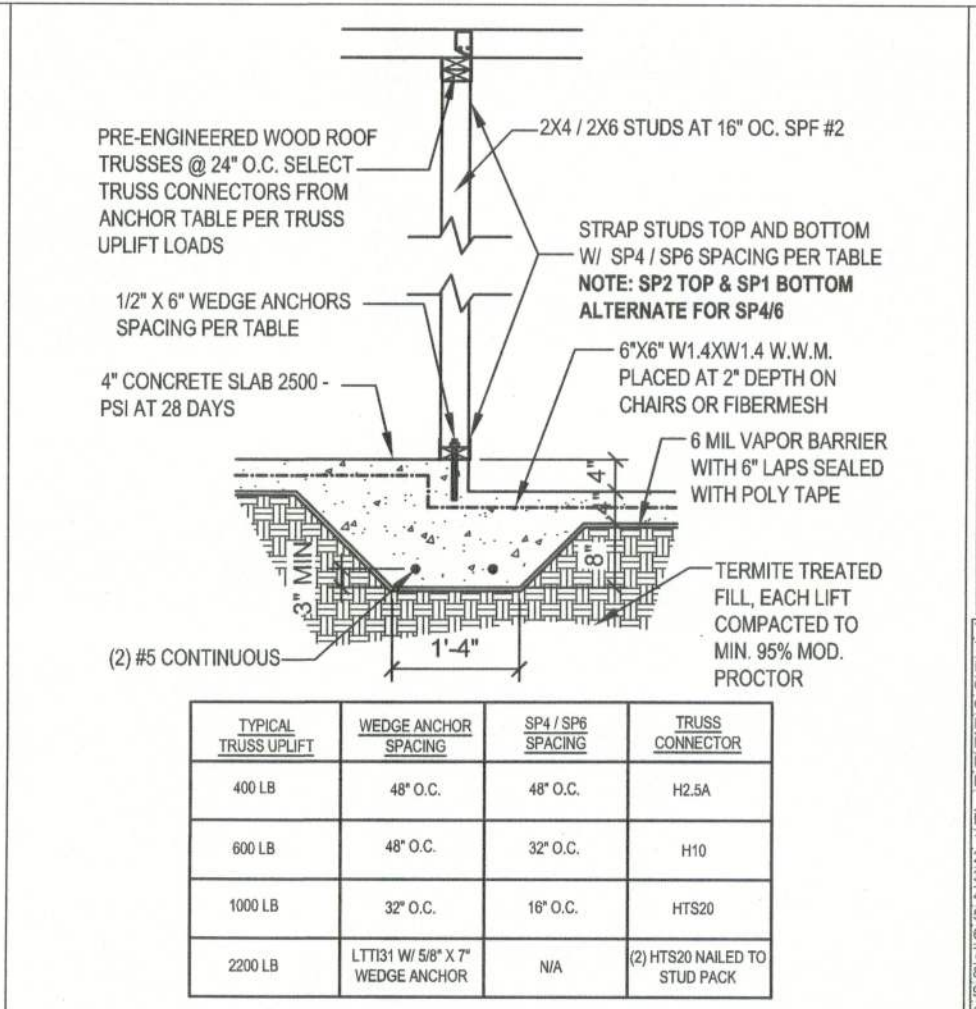
F1 - STEM WALL FOUNDATION  
SCALE: 1/2"=1'-0" REV-22-MAY-03



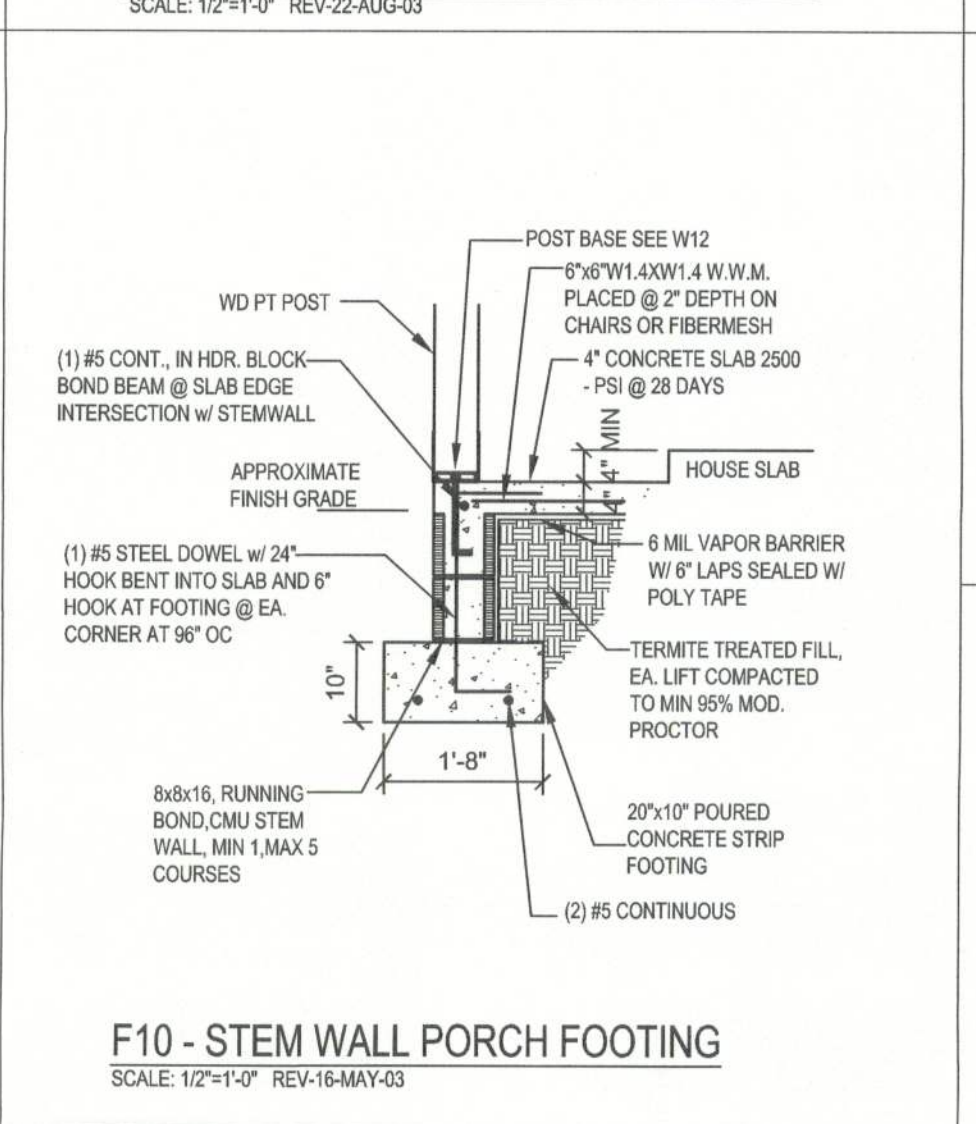
F10 - STEM WALL PORCH FOOTING  
SCALE: 1/2"=1'-0" REV-16-MAY-03



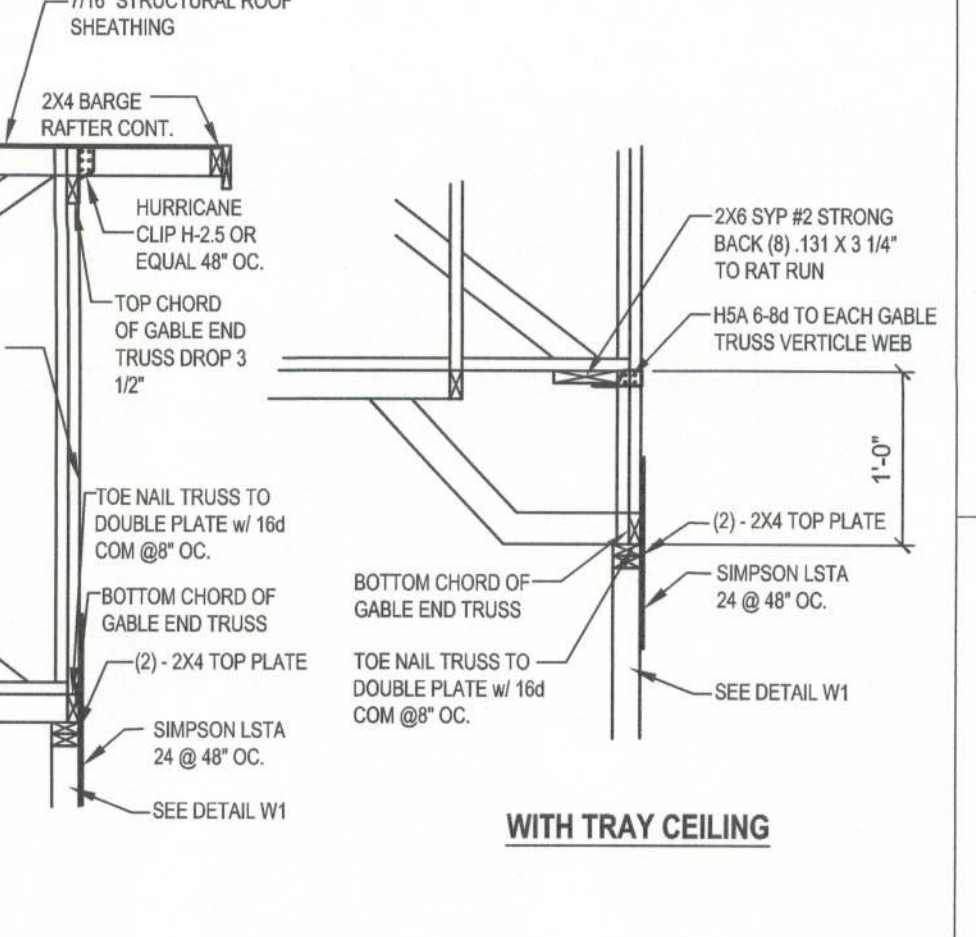
W10 - TYPICAL GABLE END (X-BRACING)  
SCALE: 1/2"=1'-0"



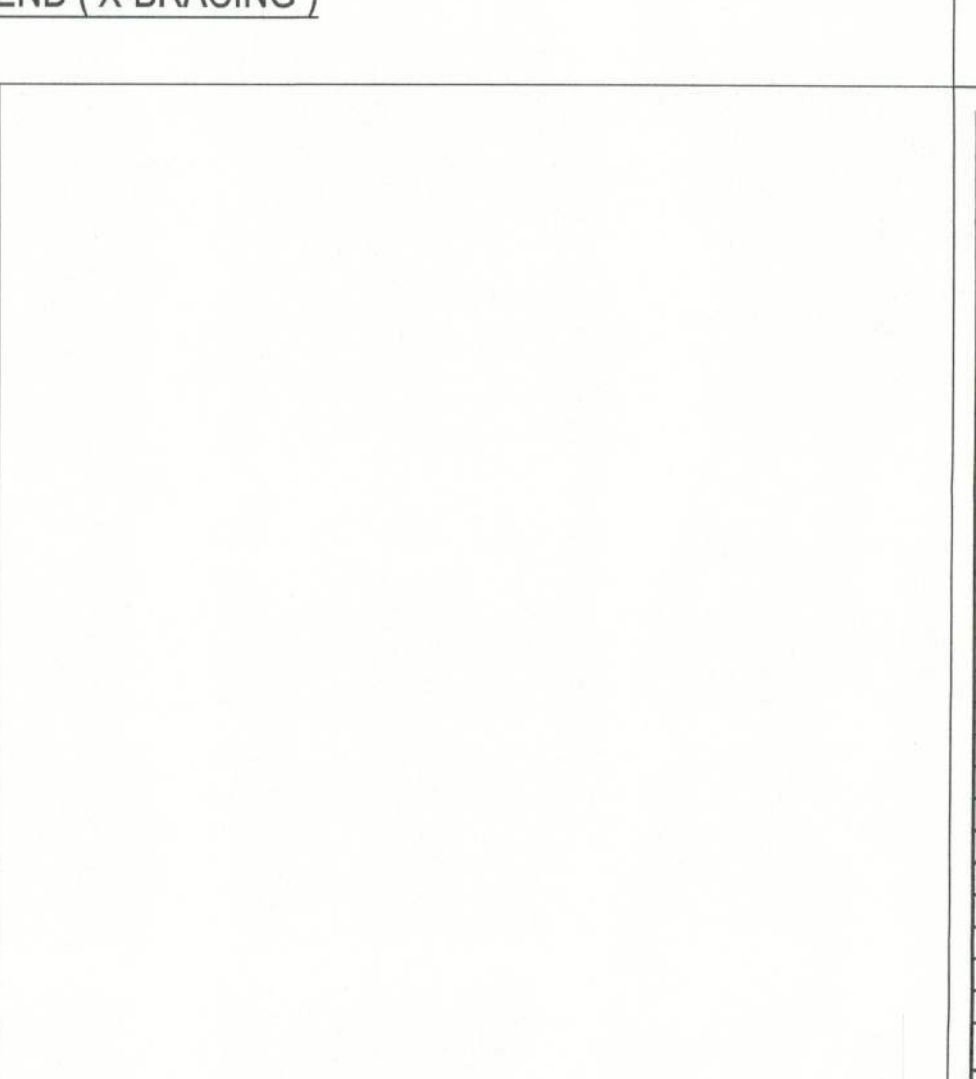
F5 - INTERIOR BEARING STEP FOOTING  
SCALE: 1/2"=1'-0" REV-22-AUG-03



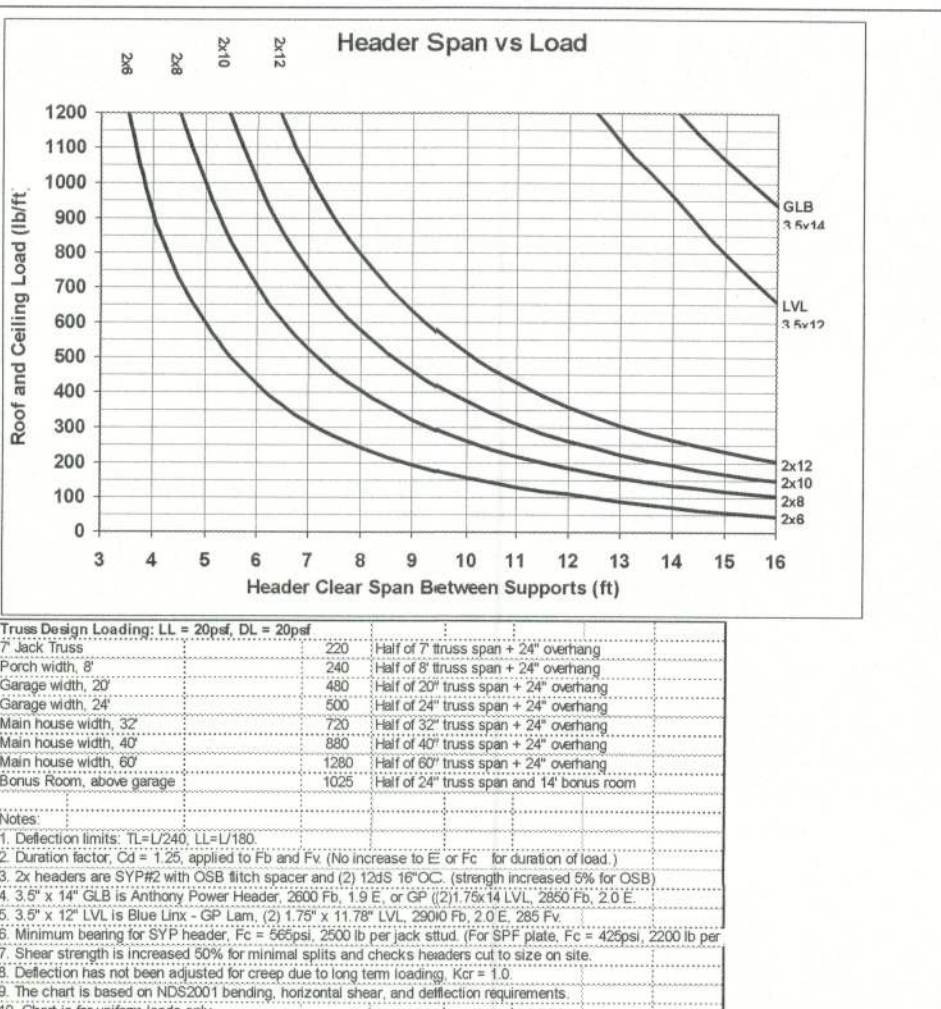
F2 - PORCH SLAB  
SCALE: 1/2"=1'-0" REV-22-AUG-03



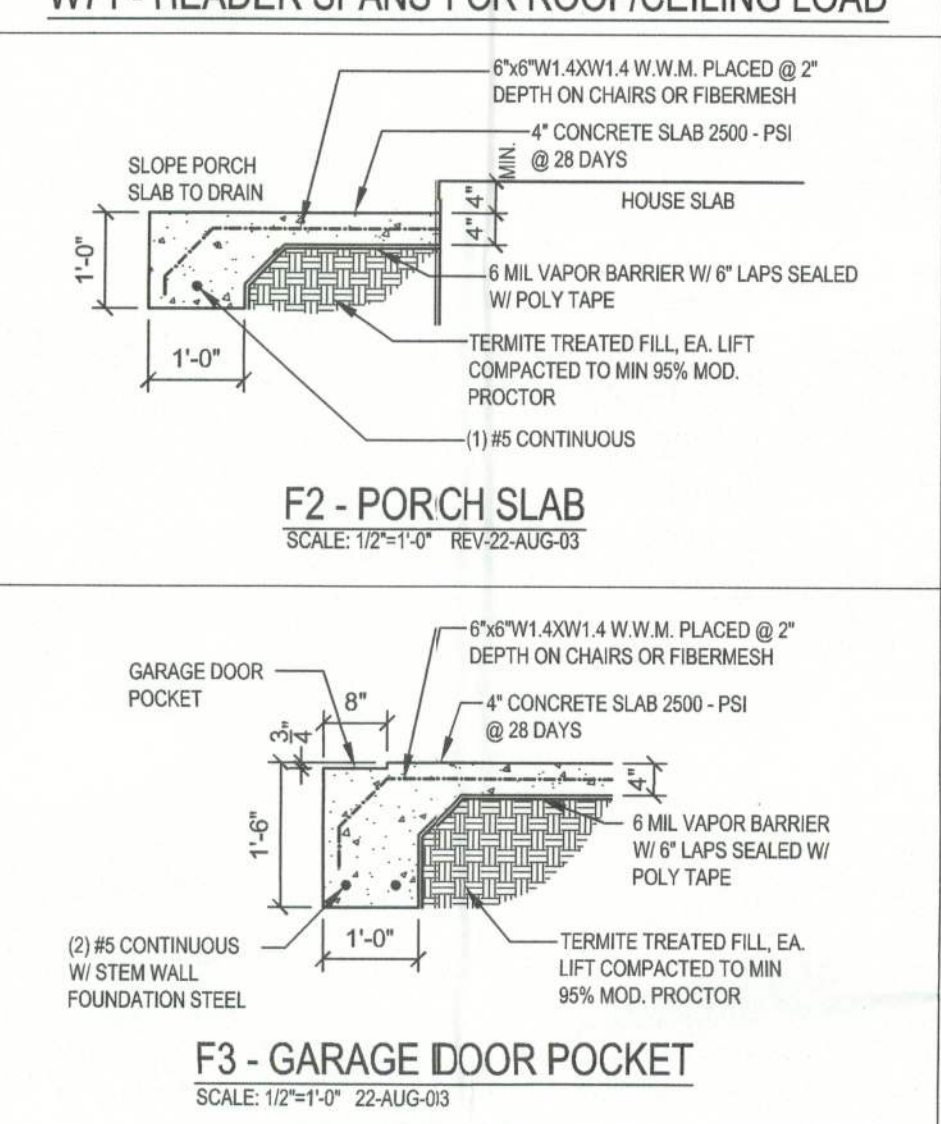
F3 - GARAGE DOOR POCKET  
SCALE: 1/2"=1'-0" REV-22-AUG-03



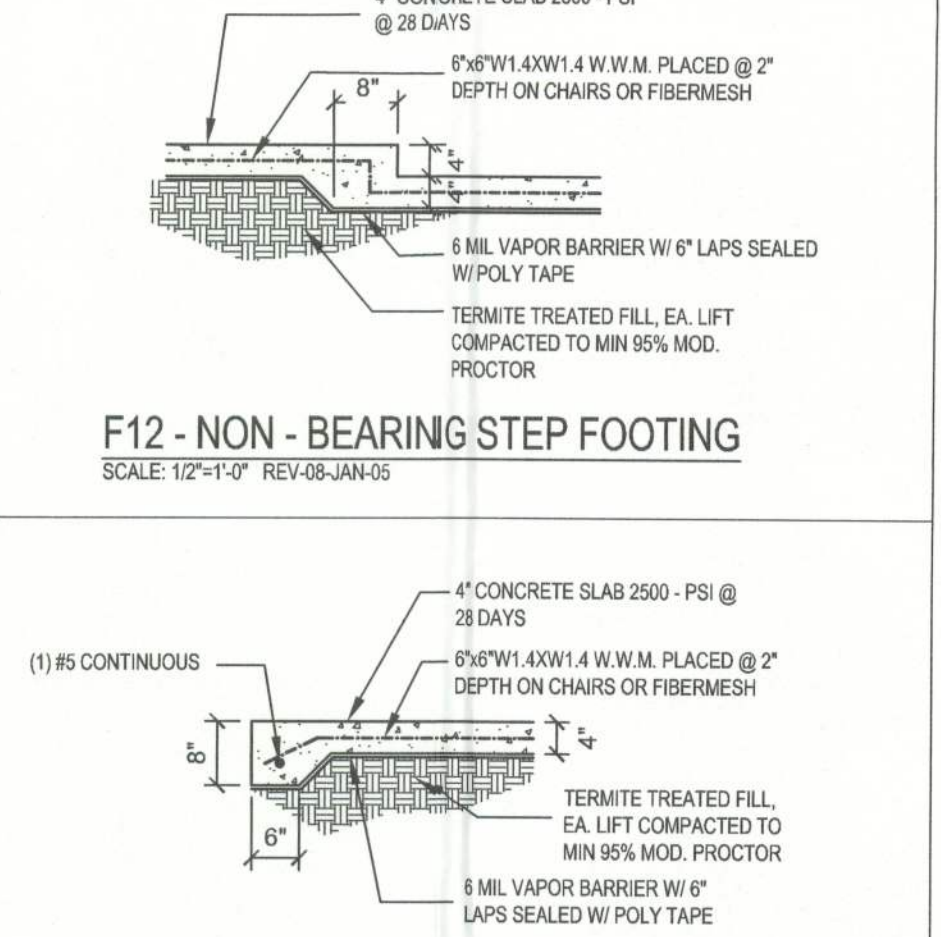
F12 - NON-BEARING STEP FOOTING  
SCALE: 1/2"=1'-0" REV-08-JAN-05



W71 - HEADER SPANS FOR ROOF/CEILING LOAD



F13 - NON-BEARING THICKENED SLAB EDGE  
SCALE: 1/2"=1'-0" REV-10-FEB-03



F13 - NON-BEARING THICKENED SLAB EDGE  
SCALE: 1/2"=1'-0" REV-10-FEB-03

**N5 - TRUSS UPLIFT CONNECTOR TABLE** REV-18-NOV-04

All connectors are Simpson Strongtie, Inc. Select top and bottom connections from this table or SST catalog to meet truss uplift. Use fasteners as specified.

Uplift SPF	Uplift SYP	Truss Connector	To Plate	To Truss / Rafter
320	455	H3	4-8d	4-8d
245	350	H5A	3-8d	3-8d
535	600	H2 SA	5-8d	5-8d
620	720	H10	6-10d x 1 1/2"	6-10d x 1 1/2"
850	990	LTS12	8-8d x 1 1/2"	8-8d x 1 1/2"
1245	1450	HTS20	10-10d or 12-10d x 1 1/2"	10-10d or 12-10d x 1 1/2"
1265	1470	H16, H16-2	10-10d x 1 1/2"	2-10d x 1 1/2"
1785	2050	LGT2	14-10d Sinkers	16-16d Sinkers
3655	4200	MG1	3/4" Thd. Rod	22-10d

**SPF SYP Strap Connector**

SPF	SYP	Strap Connector	To One Member	To Other Member
760	885	SP4	6-10d x 1 1/2"	N/A
865	1005	CS20	9-8d or 7-10d	9-8d or 7-10d
1065	1285	LSTA18-24	7-10d	7-10d
1170	1380	SPH4	12-10d x 1 1/2"	N/A
420	455	SSP	4-10d	3-10d to double plate or 1-10d to single
600	825	DSP	8-10d	6-10d to double plate or 2-10d to single
1420	1650	CS16	14-8d or 11-10d	14-8d or 11-10d

**SPF SYP Column Anchor**

SPF	SYP	Column Anchor	To Foundation	To Column / Truss
1160	1350	LTT19	3/4" x 16" AB	8-16d Sinkers
1965	2310	LTT31	3/4" x 16" AB	18-10d x 1 1/2"
2385	2775	H2ZA	3/4" x 16" AB	2 3/4" Bolts
3690	4175	HTT16	3/4" x 16" AB	18-16d
1975	2300	ABU66	3/4" x 16" AB	12-16d

Should Supporting Trusses: This table is recommended for gravity loads, but you should put extra 2x4 stud under these bearing locations for each 3000 lb of reaction. Check the minimum bearing requirements of the truss and plate girders (F14-22-Sep-2003/2004/2005).

Manufacturers and product numbers are listed for reference only. No equivalent device or material is permitted unless it can be shown to be equivalent to the listed product. For any device listed in the alternate tables as being an it meets the required load capacity. Manufacturer's installation instructions must be followed to achieve rated loads. All connections exposed directly to the weather shall be hot dipped galvanized after fabrication. Loads are maximum for wind duration. Strap uplift may be reduced proportionally to number of studs. See specification for alternate rated sizes (15d-16d, 16d-18d, 18d-20d, 20d-22d, 22d-24d, 24d-26d, 26d-28d, 28d-30d, 30d-32d, 32d-34d, 34d-36d, 36d-38d, 38d-40d, 40d-42d, 42d-44d, 44d-46d, 46d-48d, 48d-50d, 50d-52d, 52d-54d, 54d-56d, 56d-58d, 58d-60d, 60d-62d, 62d-64d, 64d-66d, 66d-68d, 68d-70d, 70d-72d, 72d-74d, 74d-76d, 76d-78d, 78d-80d, 80d-82d, 82d-84d, 84d-86d, 86d-88d, 88d-90d, 90d-92d, 92d-94d, 94d-96d, 96d-98d, 98d-100d, 100d-102d, 102d-104d, 104d-106d, 106d-108d, 108d-110d, 110d-112d, 112d-114d, 114d-116d, 116d-118d, 118d-120d, 120d-122d, 122d-124d, 124d-126d, 126d-128d, 128d-130d, 130d-132d, 132d-134d, 134d-136d, 136d-138d, 138d-140d, 140d-142d, 142d-144d, 144d-146d, 146d-148d, 148d-150d, 150d-152d, 152d-154d, 154d-156d, 156d-158d, 158d-160d, 160d-162d, 162d-164d, 164d-166d, 166d-168d, 168d-170d, 170d-172d, 172d-174d, 174d-176d, 176d-178d, 178d-180d, 180d-182d, 182d-184d, 184d-186d, 186d-188d, 188d-190d, 190d-192d, 192d-194d, 194d-196d, 196d-198d, 198d-200d, 200d-202d, 202d-204d, 204d-206d, 206d-208d, 208d-210d, 210d-212d, 212d-214d, 214d-216d, 216d-218d, 218d-220d, 220d-222d, 222d-224d, 224d-226d, 226d-228d, 228d-230d, 230d-232d, 232d-234d, 234d-236d, 236d-238d, 238d-240d, 240d-242d, 242d-244d, 244d-246d, 246d-248d, 248d-250d, 250d-252d, 252d-254d, 254d-256d, 256d-258d, 258d-260d, 260d-262d, 262d-264d, 264d-266d, 266d-268d, 268d-270d, 270d-272d, 272d-274d, 274d-276d, 276d-278d, 278d-280d, 280d-282d, 282d-284d, 284d-286d, 286d-288d, 288d-290d, 290d-292d, 292d-294d, 294d-296d, 296d-298d, 298d-300d, 300d-302d, 302d-304d, 304d-306d, 306d-308d, 308d-310d, 310d-312d, 312d-314d, 314d-316d, 316d-318d, 318d-320d, 320d-322d, 322d-324d, 324d-326d, 326d-328d, 328d-330d, 330d-332d, 332d-334d, 334d-336d, 336d-338d, 338d-340d, 340d-342d, 342d-344d, 344d-346d, 346d-348d, 348d-350d, 350d-352d, 352d-354d, 354d-356d, 356d-358d, 358d-360d, 360d-362d, 362d-364d, 364d-366d, 366d-368d, 368d-370d, 370d-372d, 372d-374d, 374d-376d, 376d-378d, 378d-380d, 380d-382d, 382d-384d, 384d-386d, 386d-388d, 388d-390d, 390d-392d, 392d-394d, 394d-396d, 396d-398d, 398d-400d, 400d-402d, 402d-404d, 404d-406d, 406d-408d, 408d-410d, 410d-412d, 412d-414d, 414d-416d, 416d-418d, 418d-420d, 420d-422d, 422d-424d, 424d-426d, 426d-428d, 428d-430d, 430d-432d, 432d-434d, 434d-436d, 436d-438d, 438d-440d, 440d-442d, 442d-444d, 444d-446d, 446d-448d, 448d-450d, 450d-452d, 452d-454d, 454d-456d, 456d-458d, 458d-460d, 460d-462d, 462d-464d, 464d-466d, 466d-468d, 468d-470d, 470d-472d, 472d-474d, 474d-476d, 476d-478d, 478d-480d, 480d-482d, 482d-484d, 484d-486d, 486d-488d, 488d-490d, 490d-492d, 492d-494d, 494d-496d, 496d-498d, 498d-500d, 500d-502d, 502d-504d, 504d-506d, 506d-508d, 508d-510d, 510d-512d, 512d-514d, 514d-516d, 516d-518d, 518d-520d, 520d-522d, 522d-524d, 524d-526d, 526d-528d, 528d-530d, 530d-532d, 532d-534d, 534d-536d, 536d-538d, 538d-540d, 540d-542d, 542d-544d, 544d-546d, 546d-548d, 548d-550d, 550d-552d, 552d-554d, 554d-556d, 556d-558d, 558d-560d, 560d-562d, 562d-564d, 564d-566d, 566d-568d, 568d-570d, 570d-572d, 572d-574d, 574d-576d, 576d-578d, 578d-580d, 580d-582d, 582d-584d, 584d-586d, 586d-588d, 588d-590d, 590d-592d, 592d-594d, 594d-596d, 596d-598d, 598d-600d, 600d-602d, 602d-604d, 604d-606d, 606d-608d, 608d-610d, 610d-612d, 612d-614d, 614d-616d, 616d-618d, 618d-620d, 620d-622d, 622d-624d, 624d-626d, 626d-628d, 628d-630d, 630d-632d, 632d-634d, 634d-636d, 636d-638d, 638d-640d, 640d-642d, 642d-644d, 644d-646d, 646d-648d, 648d-650d, 650d-652d, 652d-654d, 654d-656d, 656d-658d, 658d-660d, 660d-662d, 662d-664d, 664d-666d, 666d-668d, 668d-670d, 670d-672d, 672d-674d, 674d-676d, 676d-678d, 678d-680d, 680d-682d, 682d-684d, 684d-686d, 686d-688d, 688d-690d, 690d-692d, 692d-694d, 694d-696d, 696d-698d, 698d-700d, 700d-702d, 702d-704d, 704d-706d, 706d-708d, 708d-710d, 710d-712d, 712d-714d, 714d-716d, 716d-718d, 718d-720d, 720d-722d, 722d-724d, 724d-726d, 726d-728d, 728d-730d, 730d-732d, 732d-734d, 734d-736d, 736d-738d, 738d-740d, 740d-742d, 742d-744d, 744d-746d, 746d-748d, 748d-750d, 750d-752d, 752d-754d, 754d-756d, 756d-758d, 758d-760d, 760d-762d, 762d-764d, 764d-766d, 766d-768d, 768d-770d, 770d-772d, 772d-774d, 774d-776d, 776d-778d, 778d-780d, 780d-782d, 782d-784d, 784d-786d, 786d-788d, 788d-790d, 790d-792d, 792d-794d, 794d-796d, 796d-798d, 798d-800d, 800d-802d, 802d-804d, 804d-806d, 806d-808d, 808d-810d, 810d-812d, 812d-814d, 814d-816d, 816d-818d, 818d-820d, 820d-822d, 822d-824d, 824d-826d, 826d-828d, 828d-830d, 830d-832d, 832d-834d, 834d-836d, 836d-838d, 838d-840d, 840d-842d, 842d-844d, 844d-846d, 846d-848d, 848d-850d, 850d-852d, 852d-854d, 854d-856d, 856d-858d, 858d-860d, 860d-862d, 862d-864d, 864d-866d, 866d-868d, 868d-870d, 870d-872d, 872d-874d, 874d-876d, 876d-878d, 878d-880d, 880d-882d, 882d-884d, 884d-886d, 886d-888d, 888d-890d, 890d-892d, 892d-894d, 894d-896d, 896d-898d, 898d-900d, 900d-902d, 902d-904d, 904d-906d, 906d-908d, 908d-910d, 910d-912d, 912d-914d, 914d-916d, 916d-918d, 918d-920d, 920d-922d, 922d-924d, 924d-926d, 926d-928d, 928d-930d, 930d-932d, 932d-934d, 934d-936d, 936d-938d, 938d-940d, 940d-942d, 942d-944d, 944d-946d, 946d-948d, 948d-950d, 950d-952d, 952d-954d, 954d-956d, 956d-958d, 958d-960d, 960d-962d, 962d-964d, 964d-966d, 966d-968d, 968d-970d, 970d-972d, 972d-974d, 974d-976d, 976d-978d, 978d-980d, 980d-982d, 982d-984d, 984d-986d, 986d-988d, 988d-990d, 990d-992d, 992d-994d, 994d-996d, 996d-998d, 998d-1000d, 1000d-1002d, 1002d-1004d, 1004d-1006d, 1006d-1008d, 1008d-1010d, 1010d-1012d, 1012d-1014d, 1014d-1016d, 1016d-1018d, 1018d-1020d, 1020d-1022d, 1022d-1024d, 1024d-1026d, 1026d-1028d, 1028d-1030d, 1030d-1032d, 1032d-1034d, 1034d-1036d, 1036d-1038d, 1038d-1040d, 1040d-1042d, 1042d-1044d, 1044d-1046d, 1046d-1048d, 1048d-1050d, 1050d-1052d, 1052d-1054d, 1054d-1056d, 1056d-1058d, 1058d-1060d, 1060d-1062d, 1062d-1064d, 1064d-1066d, 1066d-1068d, 1068d-1070d, 1070d-1072d, 1072d-1074d, 1074d-1076d, 1076d-1078d, 1078d-1080d, 1080d-1082d, 1082d-1084d, 1084d-1086d, 1086d-1088d, 1088d-1090d, 1090d-1092d, 1092d-1094d, 1094d-1096d, 1096d-1098d, 1098d-1100d, 1100d-1102d, 1102d-1104d, 1104d-1106d, 1106d-1108d, 1108d-1110d, 1110d-1112d, 1112d-1114d, 1114d-1116d, 1116d-1118d, 1118d-1120d, 1120d-1122d, 1122d-1124d, 1124d-1126d, 1126d-1128d, 1128d-1130d, 1130d-1132d, 1132d-1134d, 1134d-1136d, 1136d-1138d, 1138d-1140d, 1140d-1142d, 1142d-1144d, 1144d-1146d, 1146d-1148d, 1148d-1150d, 1150d-1152d, 1152d-1154d, 1154d-1156d, 1156d-1158d, 1158d-1160d, 1160d-1162d, 1162d-1164d, 1164d-1166d, 1166d-1168d, 1168d-1170d, 1170d-1172d, 1172d-1174d, 1174d-1176d, 1176d-1178d, 1178d-1180d, 1180d-1182d, 1182d-1184d, 1184d-1186d, 1186d-1188d, 1188d-1190d, 1190d-1192d, 1192d-1194d, 1194d-1196d, 1196d-1198d, 1198d-1200d, 1200d-1202d, 1202d-1204d, 1204d-1206d, 1206d-1208d, 1208d-1210d, 1210d-1212d, 1212d-1214d, 1214d-1216d, 1216d-1218d, 1218d-1220d, 1220d-1222d, 1222d-1224d, 1224d-1226d, 1226d-1228d, 1228d-1230d, 1230d-1232d, 1232d-1234d, 1234d-1236d, 1236d-1238d, 1238d-1240d, 1240d-1242d, 1242d-1244d, 1244d-1246d, 1246d-1248d, 1248d-1250d, 1250d-1252d, 1252d-1254d, 1254d-1256d, 1256d-1258d, 1258d-1260d, 1260d-1262d, 1262d-1264d, 1264d-1266d, 1266d-1268d, 1268d-1270d, 1270d-1272d, 1272d-1274d, 1274d-1276d, 1276d-1278d, 1278d-1280d, 1280d-1282d, 1282d-1284d, 1284d-1286d, 1286d-1288d, 1288d-1290d, 1290d-1292d, 1292d-1294d, 1294d-1296d, 1296d-1298d, 1298d-1300d, 1300d-1302d, 1302d-1304d, 1304d-1306d, 1306d-1308d, 1308d-1310d, 1310d-1312d, 1312d-1314d, 1314d-1316d, 1316d-1318d, 1318d-1320d, 1320d-1322d, 1322d-1324d, 1324d-1326d, 1326d-1328d, 1328d-1330d, 1330d-1332d, 1332d-1334d, 1334d-1336d, 1336d-1338d, 1338d-1340d, 1340d-1342d, 1342d-1344d, 1344d-1346d, 1346d-1348d, 1348d-1350d, 1350d-1352d, 1352d-1354d, 1354d-1356d, 1356d-1358d, 1358d-1360d, 1360d-1362d, 1362d-1364d, 1364d-1