

Revision Schedule		
Revision Number	Revision Description	Revision Date
0	ISSUED FOR CONSTRUCTION	4/5/23

GENERAL NOTES:

1.

ALL CONSTRUCTION AND DESIGN SHALL CONFORM TO THE 2020FBC (7TH ED)
2.

THE STRUCTURAL DRAWINGS SHALL BE UTILIZED IN CONJUNCTION WITH OTHER CONSULTANTS' DRAWINGS.
3.

THE STRUCTURAL DRAWINGS ARE INTENDED FOR THE STRUCTURE TO ACT AS WHOLE ONCE CONSTRUCTION IS COMPLETE. IT IS THE RESPONSIBILITY OF THE CONTRACTOR TO ENSURE SAFETY AND STABILITY (I,E, TEMPORARY BRACING IF REQUIRED) DURING CONSTRUCTION AS A RESULT OF CONSTRUCTIONS METHODS AND SEQUENCES.
4.

THE CONTRACTOR SHALL FIELD VERIFY ALL EXISTING STRUCTURES. THE ENGINEER SHALL BE NOTIFIED ON ANY DISCREPANCY BETWEEN THE EXISTING CONDITIONS AND CONSTRUCTION DOCUMENTS.
5.

DESIGN CRITERIA

A. CODE: 2020 FBC (7TH ED)

B. LOADS AND DESIGN CRITERIA: THE FOLLOWING LOADS AND CRITERIA WERE USED IN ADDITION T THE DEAD LOAD OF THE STRUCTURE.

LIVE LOADS:

ROOF

20 PSF

SOIL CRITERIA:

ALLOWABLE SOIL BEARING

2000 PSF

PASSIVE PRESSURE

150 PCF

FRICTION COEFFICIENT

0.35

WIND CRITERIA:

WIND SPEED:

110 MPH (3-SECOND GUST)

CATEGORY:

I

EXPOSURE

C

INTERNAL PRESSURES:

=/- 0.18

CLADDING AND COMPONENTS

ZONE 1

16.00 / -31.44 PSF

ZONE 2

16.00 / -36.36 PSF

ZONE 3

16.00 / -43.73 PSF

ZONE 4

26.53 / -28.74 PSF

ZONE 5

26.54 / -35.38 PSF
- CONCRETE AND REINFORCING STEEL:
1.

ALL CONCRETE DESIGNED PER CURRENT EDITION OF AC1 318

2.

CONCRETE SHALL HAVE THE FOLLOWING MINIMUM COMPRESSIVE STRENGTH AT 28 DAYS:

A. FOUNDATION WALLS, PIERS, AND FOOTINGS

3000 PSI

B. SLAB ON CARE:

3000 PSI

C. ALL OTHER CONCRETE

3000 PSI

3.

ALL CONCRETE SHALL BE NORMAL WEIGHT CONCRETE WITH A NORMAL AIR DENSITY OF 145 PSF.

4.

PROVIDE CONSTRUCTION JOINTS WHERE SHOWN, OMIT NONE AND ADD NONE WITHOUT WRITTEN APPROVAL FROM THE ARCHITECT / ENGINEER.SUBMIT DRAWINGS SHOWING ALL PROPOSED CONSTRUCTION JOINT LOCATIONS FOR APPROVAL PRIOR TO PREPARATIONS OF AFFECTED REINFORCEMENT SHOP DRAWINGS

5.

MINIMUM ELAPSED TIME BETWEEN ADJACENT CONCRETE PLACEMENTS SHALL BE 48 HOURS

6.

CONCRETE MIX DESIGN FOR EACH TYPE AND STRENGTH OF CONCRETE SPECIFIED SHALL BE SUBMITTED FOR ARCHITECT / ENGINEER REVIEW 30 DAYS PRIOR TO PLACEMENT OF CONCRETE

7.

ALL REINFORCING STEEL ASTM A615 GRADE 60, ALL WELDED WIRE FABRIC ASTM A185
- REINFORCING STEEL:
1.

ALL BAR REINFORCEMENT SHALL BE CONFORM TO ASTM 615 GRADE 60.

2.

WELD WIRE FABRIC REINFORCEMENT SHALL CONFORM TO ASTM A185

3.

CLEARANCE OF MAIN REINFORCEMENT FROM ADJACENT SHALL BE CONFORM TO THE FOLLOWING (UNLESS OTHERWISE SHOWN IN DETAIL).

A. UNFORMED SURFACES IN CONTACT WITH GROUND (FOOTING OR WALL BOTTOM).....3"

B. SLAB ON GRADE2 1/2"

C. FORMED SURFACE IN CONTACT WITH GROUND OR EXPOSED TO WEATHER (WALLS, PIERS).....2"

D. IN ALL CASES, CLEARANCE NOT LESS THAN DIAMETER OF BARS.

NOTE: MAXIMUM DEVIATION FROM THESE REQUIREMENTS SHALL BE + 1/4" FOR SECTIONS 10" OR LESS AND +1/2" FOR SECTIONS OVER 10" THICK.

4.

REINFORCEMENT SHALL BE CONTINUOUS THROUGH ALL CONSTRUCTION JOINTS UNLESS OTHERWISE INDICATED ON DRAWS

5.

WHERE REINFORCEMENT IS NOT SHOWN ON DRAWINGS, PROVIDE REINFORCEMENT IN ACCORDANCE WITH APPLICABLE TYPICAL DETAILS OR SIMILAR TO THAT SHOWN FOR MOST NEARLY SIMILAR SITUATION, AS DETERMINED BY THE ARCHITECT / ENGINEER. IN NO CASE SHALL REINFORCEMENT BE LESS THAN MINIMUM PERMITTED BY APPLICABLE CODES.

6.

ALL WORKMANSHIP AND MATERIAL SHALL BE CONFORMED TO THE MANUAL OF STANDARD PRACTICE FOR DETAILING REINFORCED CONCRETE STRUCTURES" (ACI-315)

7.

ALL REINFORCEMENT SHALL BE INSPECTED AND APPROVED BY THE ARCHITECT/ENGINEER OR OWNER TESTING AGENCY BEFORE CONCRETE IS PLACED.

8.

WHERE CONTINUOUS BARS ARE CALLED FOR THEY SHALL BE CONTINUOUSLY AROUND CORNERS, LAPPED AT NECESSARY SPLICES AND HOOKED AT CONTINUOUS ENDS.

9.

WELDED WIRE FABRIC SHALL BE LAPPED ONE FULL MESH PANEL OR 6" MIN.

10.

ALL REINFORCING SPLICES SHALL CONFORM TO THE TABLE(S) PROVIDED IN THE GENERAL NOTES FOR STRENGTH OF CONCRETE BUT IN NO CASE LESS THAN THE REQUIREMENTS OF THE LATEST EDITION OF A318

11.

SLABS AND WALLS SHALL NOT BE SLEEVED OR BOXED OUT OR HAVE THEIR REINFORCEMENT INTERRUPTED EXCEPT SPECIFICALLY NOTED ON THE DRAWINGS. PROVIDE ADDITIONAL REINFORCEMENT AROUND OPENINGS AS SHOWN IN THE DETAILS.

12.

SUBMIT CHECKED SHOP DRAWINGS TO THE ARCHITECT / ENGINEER FOR REVIEW PRIOR TO FABRICATION OF REINFORCEMENT.

13.

BAR SUPPORTS SHALL BE GALVANIZED OR STAINLESS STEEL. BAR SUPPORTS IN CONTACT WITH EXPOSE SURFACE SHALL BE GALVANIZE AND PLASTIC TIPPED.
- ADDITION CONCRETE ITEMS:
- SLAB AND WALL REINFORCING LAP SPLICE LENGTHS
- | BAR SIZE | TENSION SPLICE | | DEVELOPMENT LENGTH |
|----------|----------------|-------|--------------------|
| | TOP | OTHER | |
| #3 | 21" | 15" | 13" |
| #4 | 29" | 20" | 17" |
| #5 | 35" | 25" | 21" |
| #6 | 43" | 31" | 25" |
| #7 | 54" | 39" | 32" |
| #8 | 71" | 51" | 42" |
- | BAR SIZE | TENSION SPLICE | | DEVELOPMENT LENGTH |
|----------|----------------|-------|--------------------|
| | TOP | OTHER | |
| #3 | 21" | 15" | 13" |
| #4 | 29" | 20" | 17" |
| #5 | 35" | 25" | 21" |
| #6 | 46" | 33" | 27" |
| #7 | 63" | 45" | 37" |
| #8 | 83" | 59" | 49" |
- NOTES:
1.

LAPPED SPLICE LENGTHS BASED ON ASTM A-615, GRADE 60, REBAR

2.

REINFORCING BARS CLASSIFIED AS TOP BARS WHEN MORE THAN 12" ON CONCRETE IS CAST BENEATH RESPECTIVE REINFORCING BAR.

3.

COMPRESSION SPLICES SHALL PERMISSIBLE ONLY WHERE SPECIFICALLY NOTED ON THE DRAWINGS

4.

TENSION SPLICES SHALL BE USED IN ALL BEAMS, SLABS, AND WALLS UNLESS OTHERWISE NOTED.

5.

WHEN LAPPING LARGER BARS WITH SMALLER BARS, LAP LENGTH FOR SMALLER BAR SHALL GOVERN RESPECTIVE SPLICE.

6.

SPLICE CONTINUOUS TOP REINFORCING BARS AT CENTER OF CLEAR SPAN WITH COMPRESSION SPLICES

7.

SPLICE CONTINUOUS REINFORCING BARS AT CENTER OF SUPPORTING ELEMENT WITH COMPRESSION SPLICES.
- FLOOR SLABS:
1.

FLOOR SLABS SHALL BE ON AT LEAST 4" OF RELATIVELY CLEAN GRANULAR MATERIAL SUCH AS SAND, SAND AND GRAVEL, OR CRUSHED STONE. GRANULAR MATERIAL SHALL HAVE 100% PASSING THE 1 1/2" SIEVE AND A MAXIMUM OF 10% PASSING THE NO. 200 SIEVE.

2.

STRUCTURAL FILL SHALL BE PLACED IN THIN LOOSE LIFTS NOT EXCEEDING 12" IN THICKNESS AND COMPACTED WITH A HEAVY ROLLER. EACH LIFT SHALL BE THOROUGHLY COMPACTED WITH THE LABORATORY ROLLER TO PROVIDE DENSITIES TO AT LEAST 95% OF THE PROCTOR MAXIMUM DRY DENSITY. STRUCTURAL FILL SHALL CONSIST OF AN INORGANIC NON-PLASTIC, GRANULAR SOIL CONTAINING LESS THAN 10% MATERIAL PASSING THE 200 MESH SIEVE.
- POST-INSTALLED REBAR:
1.

POST-INSTALLED REINFORCING BAR CONNECTIONS SHALL BE DESIGNED PER THE ACI BUILDING CODE REQUIREMENTS FOR STRUCTURAL CONCRETE (ACI 318). POST-INSTALLED REINFORCING BAR CONNECTIONS SHALL BE CONSIST OF HILTI EPOXY SYSTEMS OR EQUAL

2.

THE DESIGN OF STRAIGHT POST-INSTALLED REINFORCING BARS SHALL BE PREFORMED PER THE DEVELOPMENT AND SPLICE REQUIREMENTS OF THE ACI 318. THE POST-INSTALLED REINFORCING BAR SYSTEM IS AN ALTERNATIVE TO CAST-IN-PLACE REINFORCING BARS GOVERNED BY ACI 318 AND IBC CHAPTER 19.

3.

THE EPOXY SYSTEM SHALL BE TESTED IN ACCORDANCE WITH THE ICC-ES ACCEPTANCE CRITERIA FOR POST-INSTALLED EPOXY ANCHORS IN CONCRETE ELEMENTS (ACI 308), TABLE 3.8 TECHNICAL DATE SHALL BE PUBLISHED IN AN ICC-ES EVALUATION SERVICE REPORT SHOWING COMPLIANCE WITH IBC.

4.

POST-INSTALLED REINFORCING BAR INSTALLATION SHALL BE PERFORMED BY PERSONNEL TRAINED TO INSTALL THE SYSTEM PER THE MANUFACTURED PRINTED INSTALLATION INSTRUCTION (MP1), AS INCLUDED IN THE ANCHOR PACKAGING.
- COMPACTION REQUIREMENTS
1.

SUBGRADE SOILS AND STRUCTURAL FILL MATERIALS SHALL BE COMPACTED TO THE FOLLOWING PERCENTAGES OF THE ASTM D1557 MAXIMUM DRY DENSITY AT +/- 2% OPTIMUM MOISTURE CONTENT:
- | MATERIAL | MINIMUM PERCENT COMPACTION |
|---------------------------------------|----------------------------|
| STRUCTURAL FILL, IN THE BUILDING AREA | 95 |
| SUBBASE FOR SLAB SUPPORT | 95 |
| SUBGRADE BELOW STRUCTURAL FILL | 95 |
| MISCELLANEOUS BACKFILL | 90 |
- STRUCTURAL ALUMINUM
1.

STRUCTURAL ALUMINUM SHALL BE DOMESTIC ALLOT 6061-T6, DESIGNED IN ACCORDANCE WITH THE ALUMINUM ASSOCIATION'S SPECIFICATION FOR ALUMINUM STRUCTURES, LATEST ADDITION

2.

FASTENERS: UNLESS DETAILED OTHERWISE, ALL FASTENERS SHALL BE 316 STAINLESS STEEL. ALUMINUM BOLTS, WHERE SPECIFIED SHALL BE 2024-T4 OR 6061-T6 ALLOY.

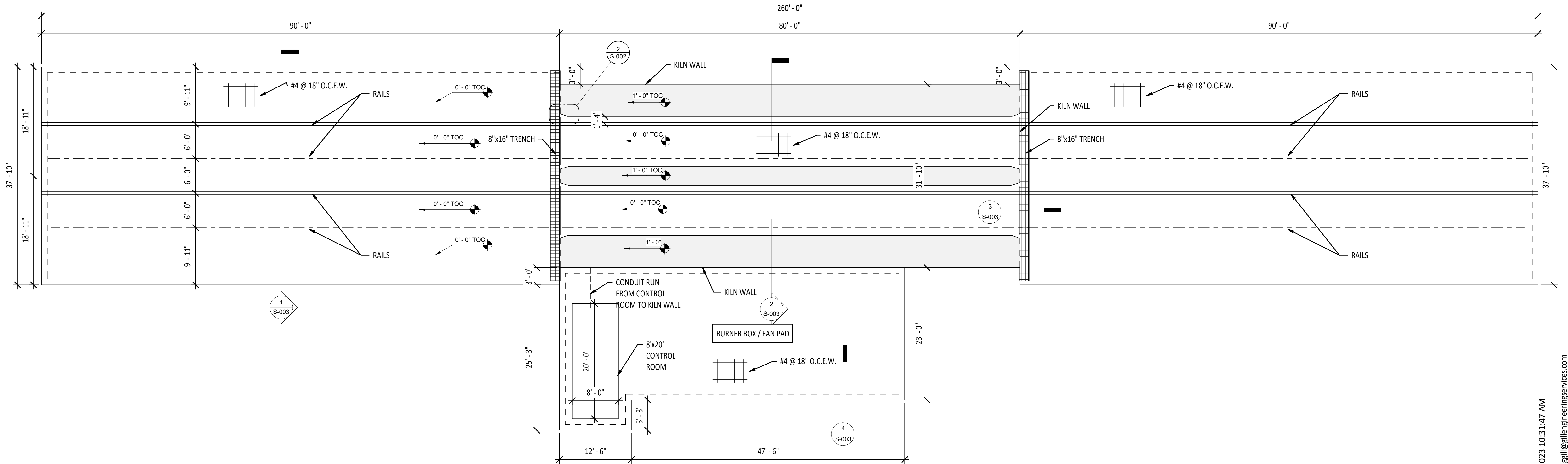
3.

ALL WELDING SHALL CONFORM WITH ASE D1.2, LATEST STRUCTURAL WELDING CODE - ALUMINUM.

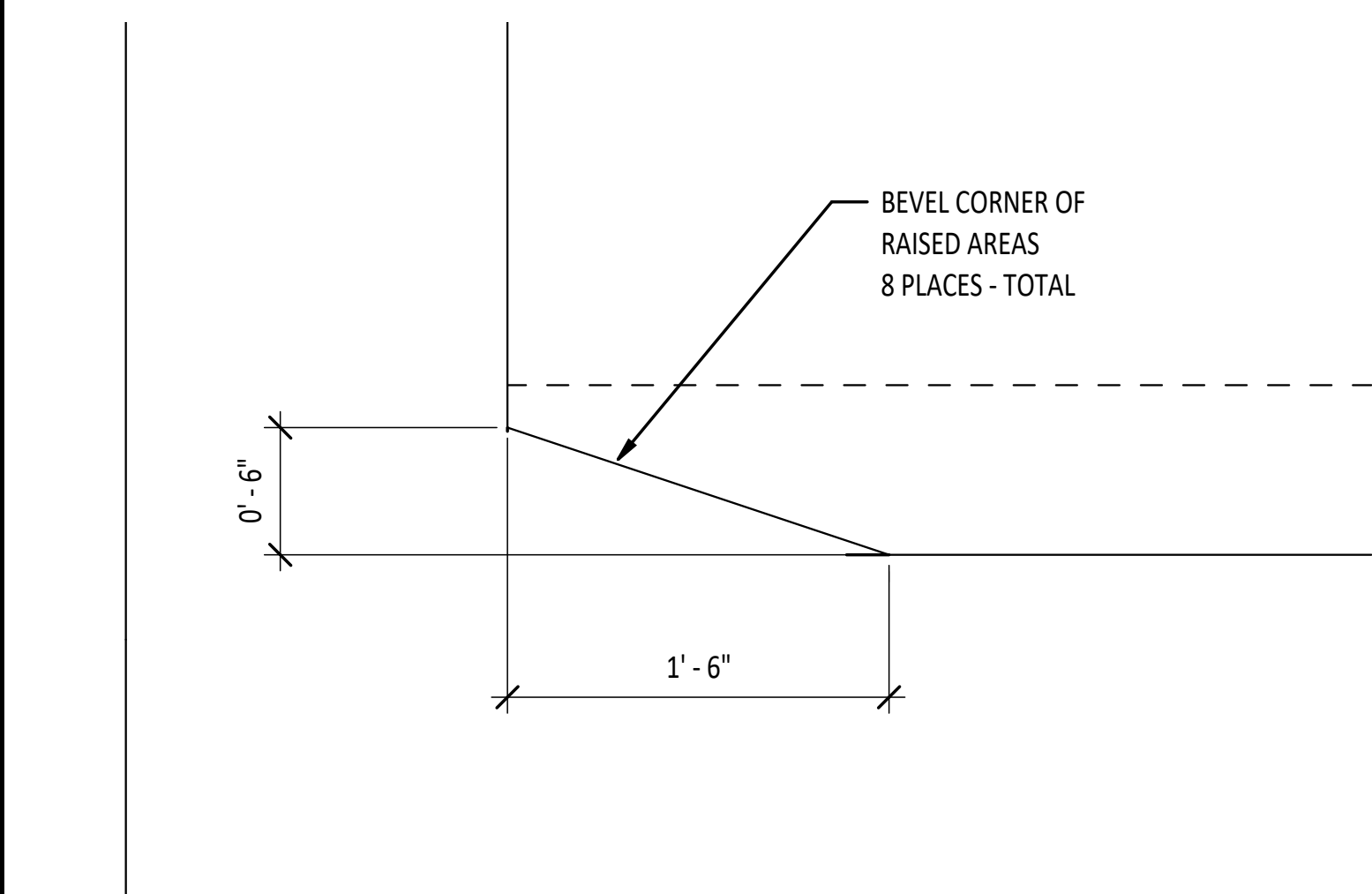
4.

WHERE THE CONTACT OF DISSIMILAR METALS MAY CAUSE ELECTROLYSIS OR WHERE ALUMINUM WILL COME IN CONTACT WITH CONCRETE, MORTAR OR PLASTER, THE CONTACT SURFACE OF THE ALUMINUM SHALL BE COATED WITH 1 COAT JOF ZINC CHROMATE PRIMER AND ONE HEAVY COAT OF ALUMINUM PIGMENT ASPHALT PAINT.
-
- PRINTED COPIES OF THE DOCUMENT ARE NOT CONSIDERED SIGNED AND SEALED AND THE SIGNATURE MUST BE VERIFY ON ANY ELECTRONIC COPIES
- Gary Gill
2023.04.05 10:43:17
-04'00'
2023.001.20093
-
- 4/5/2023 10:31:46 AM
email: ggil@gillengineeringsservices.com
- | SHEET SCHEDULE | | | | | |
|----------------|----------------------------|----------|---------------|-------------------------|--|
| SHEET NUMBER | SHEET NAME | REVISION | REVISION DATE | DESCRIPTION | |
| S-001 | STRUCTURAL NOTES | 0 | 4/5/23 | ISSUED FOR CONSTRUCTION | |
| S-002 | FOUNDATION PLAN | 0 | 4/5/23 | ISSUED FOR CONSTRUCTION | |
| S-003 | CONCRETE SECTIONS | 0 | 4/5/23 | ISSUED FOR CONSTRUCTION | |
| S-004 | BUILDING LAYOUT PLAN | 0 | 4/5/23 | ISSUED FOR CONSTRUCTION | |
| S-005 | BUILDING ELEVATION | 0 | 4/5/23 | ISSUED FOR CONSTRUCTION | |
| S-006 | ROOF FRAMING PLAN | 0 | 4/5/23 | ISSUED FOR CONSTRUCTION | |
| S-007 | FRAMING ELEVATIONS | 0 | 4/5/23 | ISSUED FOR CONSTRUCTION | |
| S-008 | FRAMING ELEVATIONS | 0 | 4/5/23 | ISSUED FOR CONSTRUCTION | |
| S-009 | INTERIOR TRUSSES | 0 | 4/5/23 | ISSUED FOR CONSTRUCTION | |
| S-010 | SECTIONS | 0 | 4/5/23 | ISSUED FOR CONSTRUCTION | |
| SD-1 | FRONT AND REAR WALLS | 0 | 4/5/23 | ISSUED FOR CONSTRUCTION | |
| SD-2 | ROOF PANEL AND SIDE | 0 | 4/5/23 | ISSUED FOR CONSTRUCTION | |
| SD-3 | DOOR TRUSSES AND FAN DECKS | 0 | 4/5/23 | ISSUED FOR CONSTRUCTION | |
- | KILN | | |
|------------------------|-----------------|---|
| COLUMBIA COUNTY, FL | | |
| THE ROBINS | | GILL ENGINEERING SERVICES, INC
AUTH # 30824
GARY GILL PE #51942
P.O. BOX 1420
LIVE OAK, FL 32064 386-590-1242 |
| DRAWN BY: | GG | |
| CHKD BY: | GG | |
| APPRD BY: | GG | |
| STRUCTURAL NOTES | | |
| PROJECT #:
2305-015 | DWG #:
S-001 | REV #:
0 |

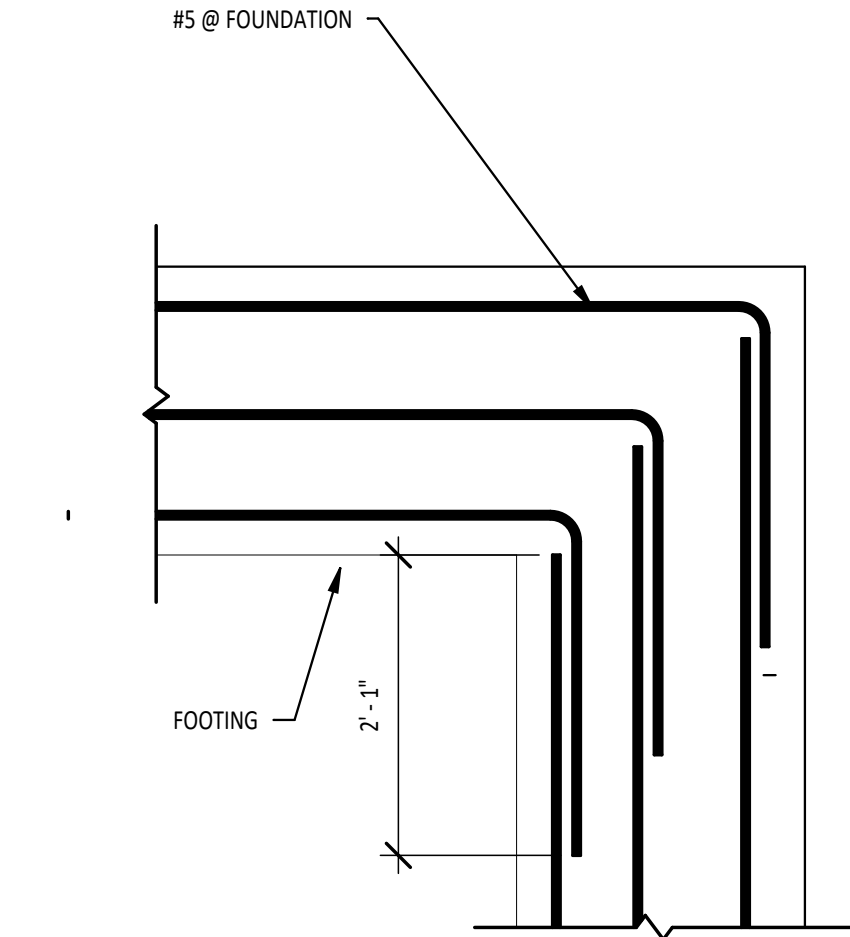
Revision Schedule		
Revision Number	Revision Description	Revision Date
0	ISSUED FOR CONSTRUCTION	4/5/23



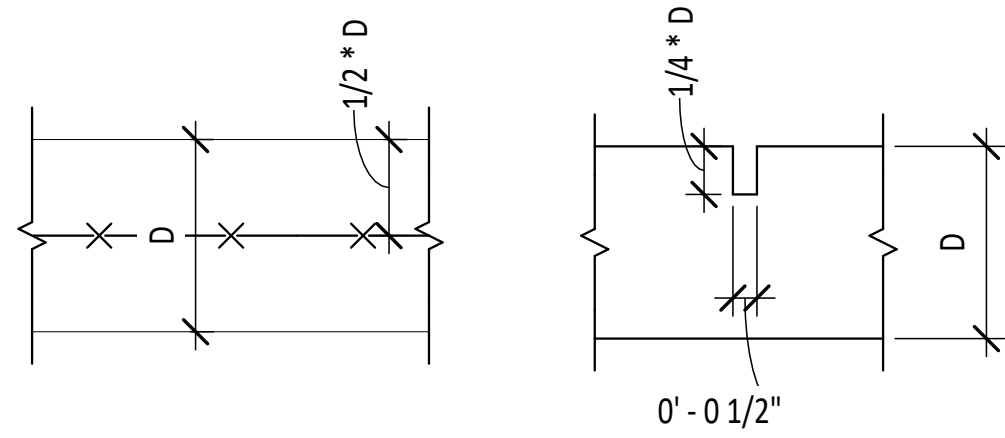
① FOUNDATION PLAN
1/8" = 1'-0"



② DETAIL - BEVEL CORNERS
1 1/2" = 1'-0"



③ FOOTING SPLICE
3/4" = 1'-0"



SLAB THICKNESS, IN.	LESS THAN 3/4-INCH AGGREGATE; SPACING, FT	LARGER THAN 3/4-INCH AGGREGATE; SPACING, FT	SLUMP LESS THAN 4 INCHES; SPACING, FT
4	8	10	12
5	10	13	15
6	12	15	18

④ SLAB AND JOINT DETAIL
3" = 1'-0"

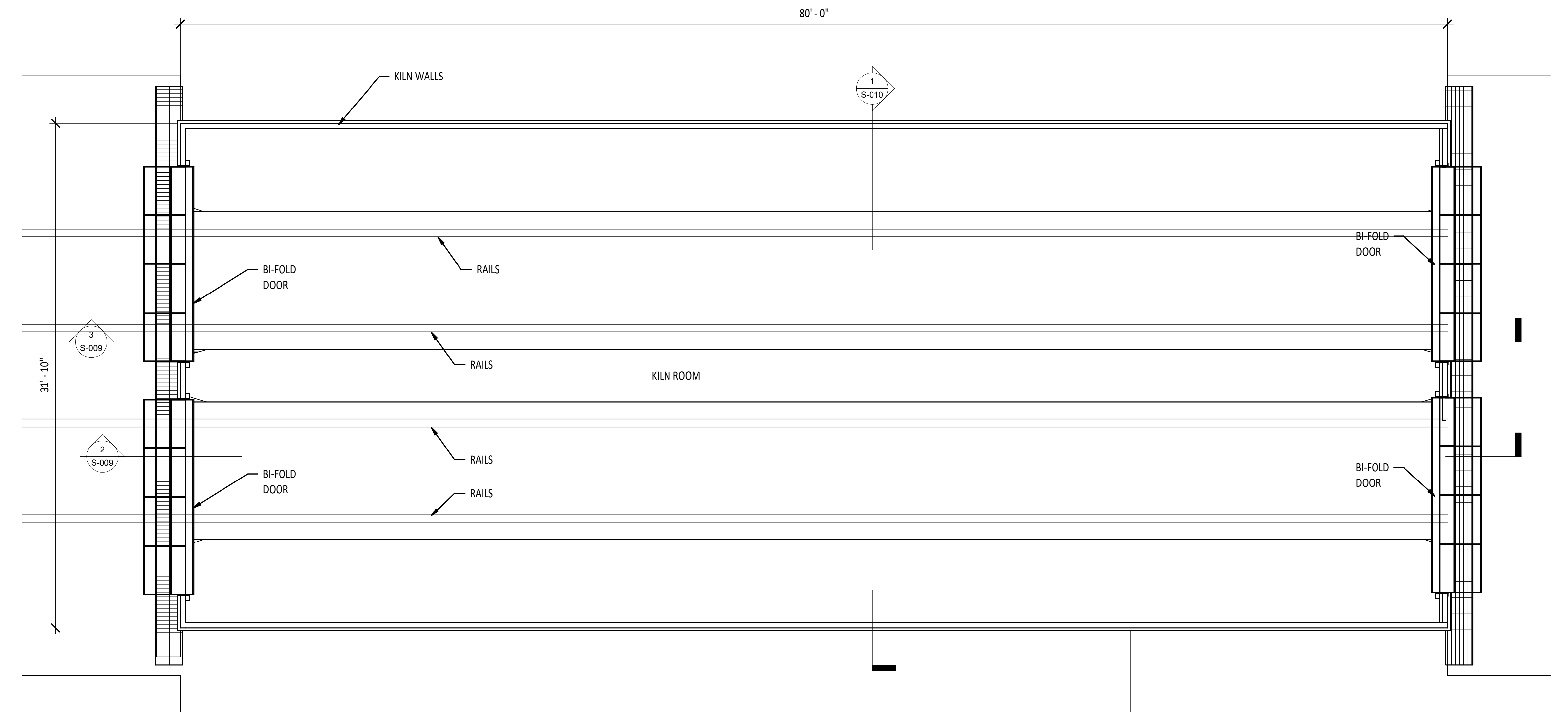
PRINTED COPIES OF THE DOCUMENT
ARE NOT CONSIDERED SIGNED AND SEALED
AND THE SIGNATURE MUST BE VERIFY ON
ANY ELECTRONIC COPIES



KILN					
COLUMBIA COUNTY, FL					
THE ROBINS			GILL ENGINEERING SERVICES, INC AUTH # 30824 GARY GILL PE #51942 P.O. BOX 1420 LIVE OAK, FL 32064 386-590-1242		
DRAWN BY:	GG				
CHKD BY:	GG				
APPRD BY:	GG				
FOUNDATION PLAN					
PROJECT #: 2305-015		DWG #: S-002		REV #: 0	

4/5/2023 10:31:47 AM
email: ggil@gillengineeringervices.com

Revision Schedule		
Revision Number	Revision Description	Revision Date
0	ISSUED FOR CONSTRUCTION	4/5/23



1 BUILDING LAYOUT PLAN
1/4" = 1'-0"

8 FT. WIDE WALL PANELS
REFER TO DRAWING SD-3
FOR DETAILS

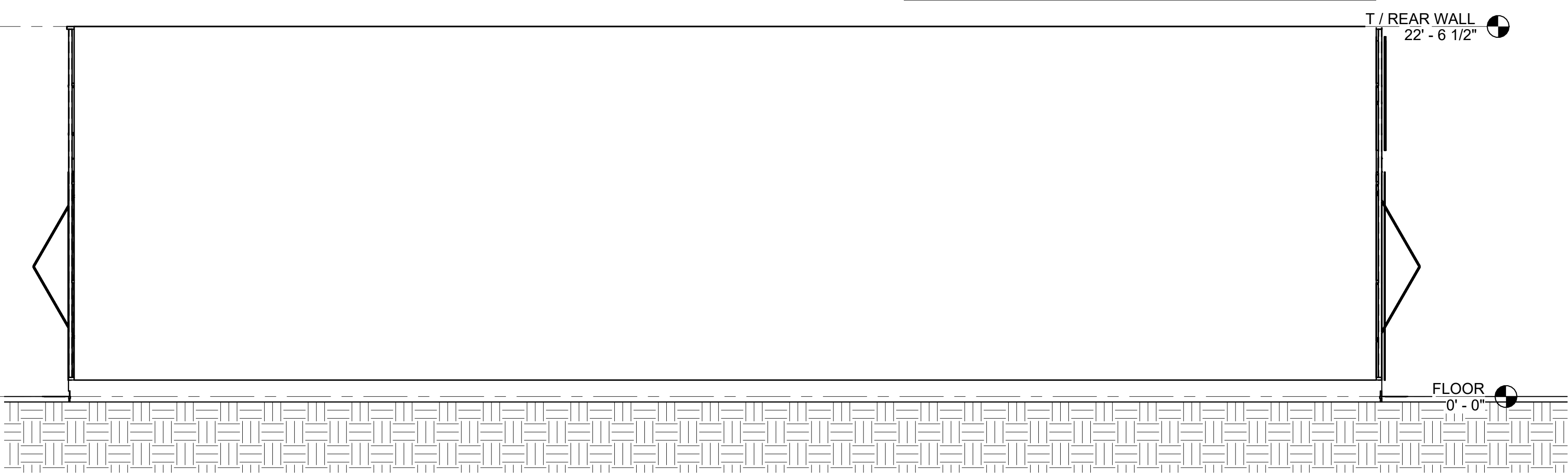
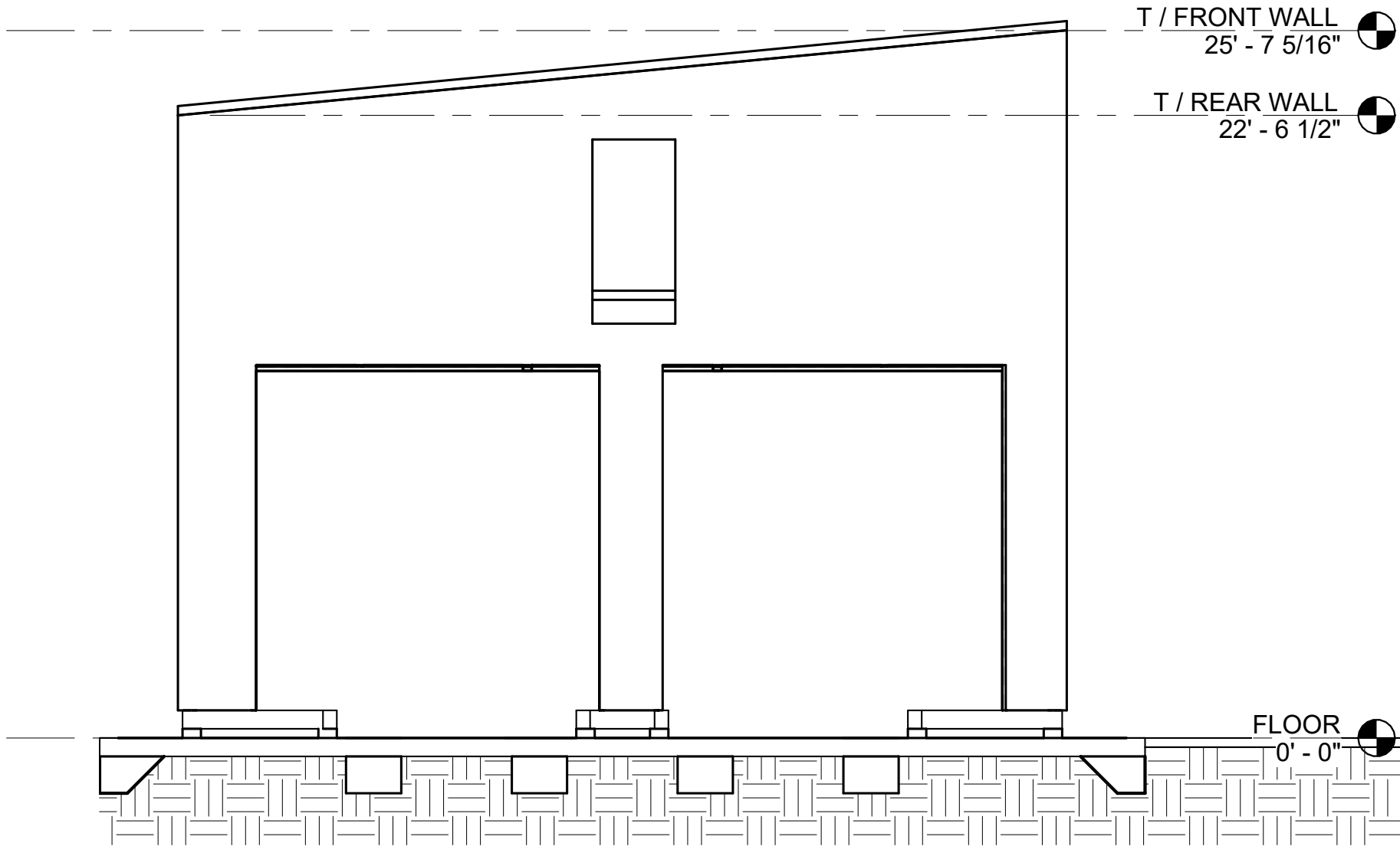
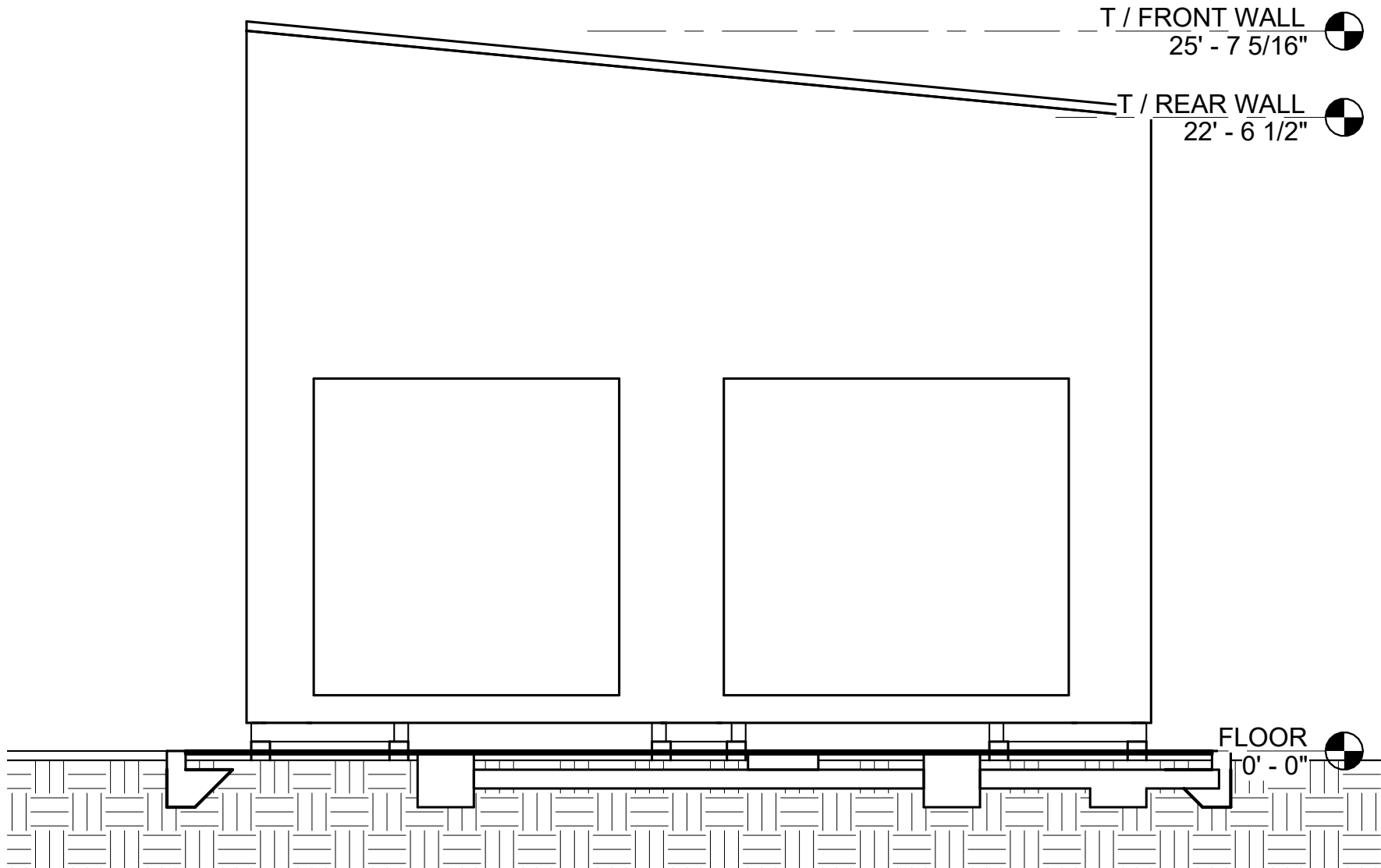
WALL LEGEND
1/4" = 1'-0"

4/5/2023 10:31:48 AM
email: ggil@gillengineeringervices.com



KILN			
COLUMBIA COUNTY, FL			
THE ROBINS			GILL ENGINEERING SERVICES, INC AUTH # 30824 GARY GILL PE #51942 426 SW COMMERCE DR 130-M LAKE CITY, FL 32025 386-590-1242
DRAWN BY:	Author		
CHKD BY:	Checker		
APPRD BY:	Approver		
BUILDING LAYOUT PLAN			
PROJECT #:		DWG #:	REV #:
2305-015		S-004	0

Revision Schedule		
Revision Number	Revision Description	Revision Date
0	ISSUED FOR CONSTRUCTION	4/5/23

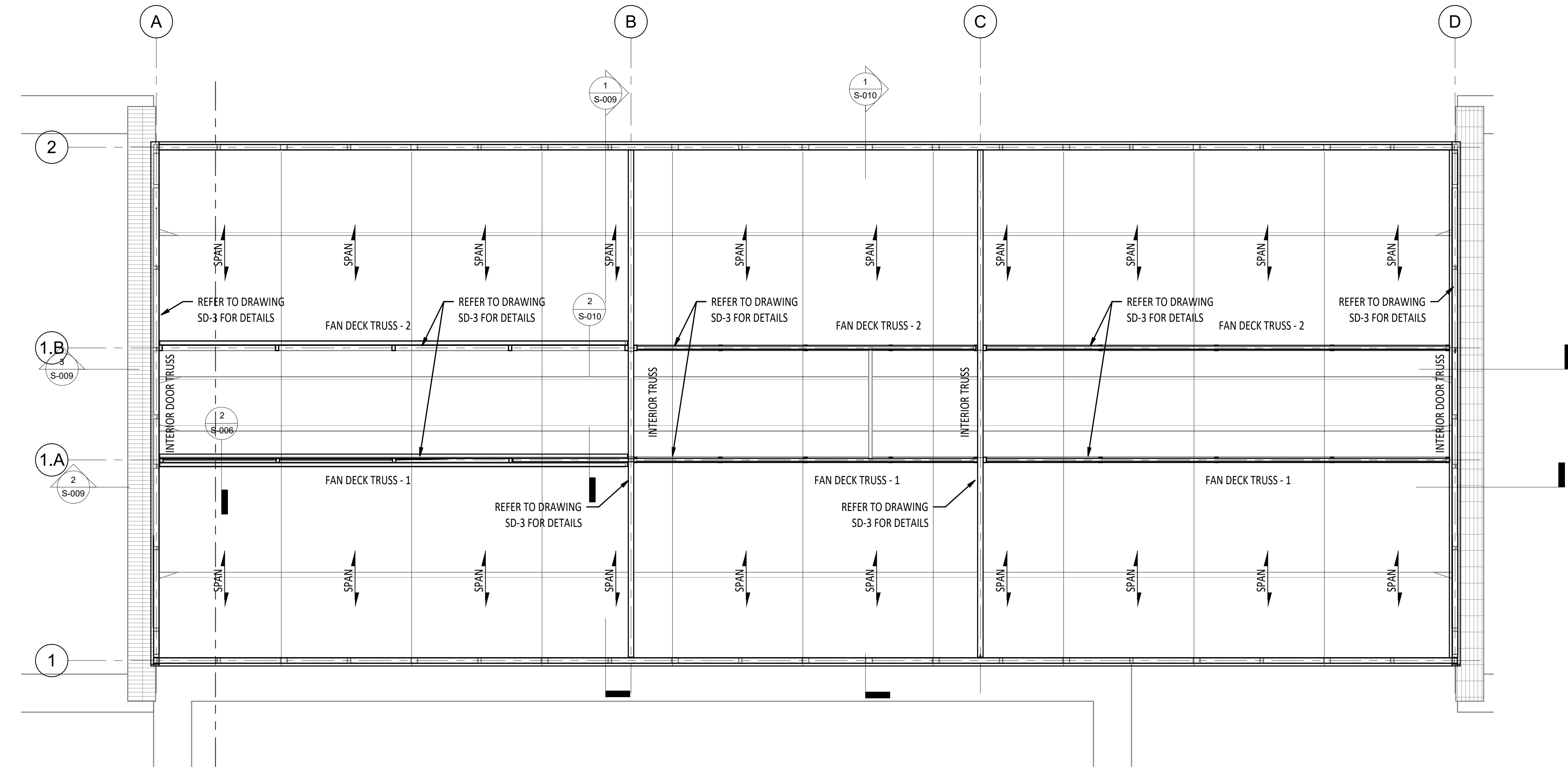


4/5/2023 10:31:50 AM
email: ggil@gillengineeringervices.com

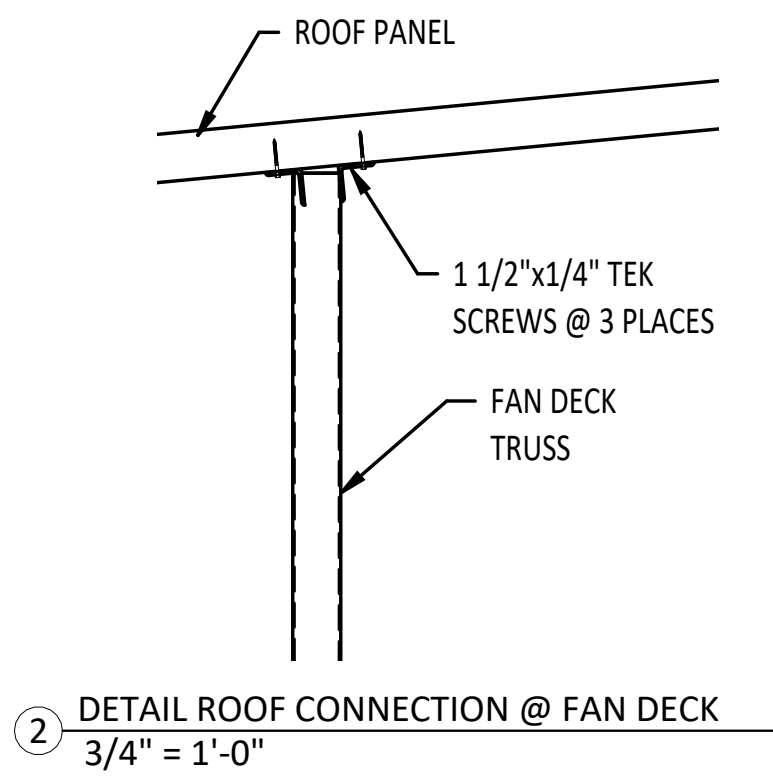


KILN			
COLUMBIA COUNTY, FL			
THE ROBINS		GILL ENGINEERING SERVICES, INC AUTH # 30824 GARY GILL PE #51942 426 SW COMMERCE DR 130-M LAKE CITY, FL 32025 386-590-1242	
DRAWN BY:	Author		
CHKD BY:	Checker		
APPRD BY:	Approver	BUILDING ELEVATION	
PROJECT #:	2305-015	DWG #:	S-005
		REV #:	0

Revision Schedule		
Revision Number	Revision Description	Revision Date
0	ISSUED FOR CONSTRUCTION	4/5/23



1 ROOF FRAMING
1/4" = 1'-0"

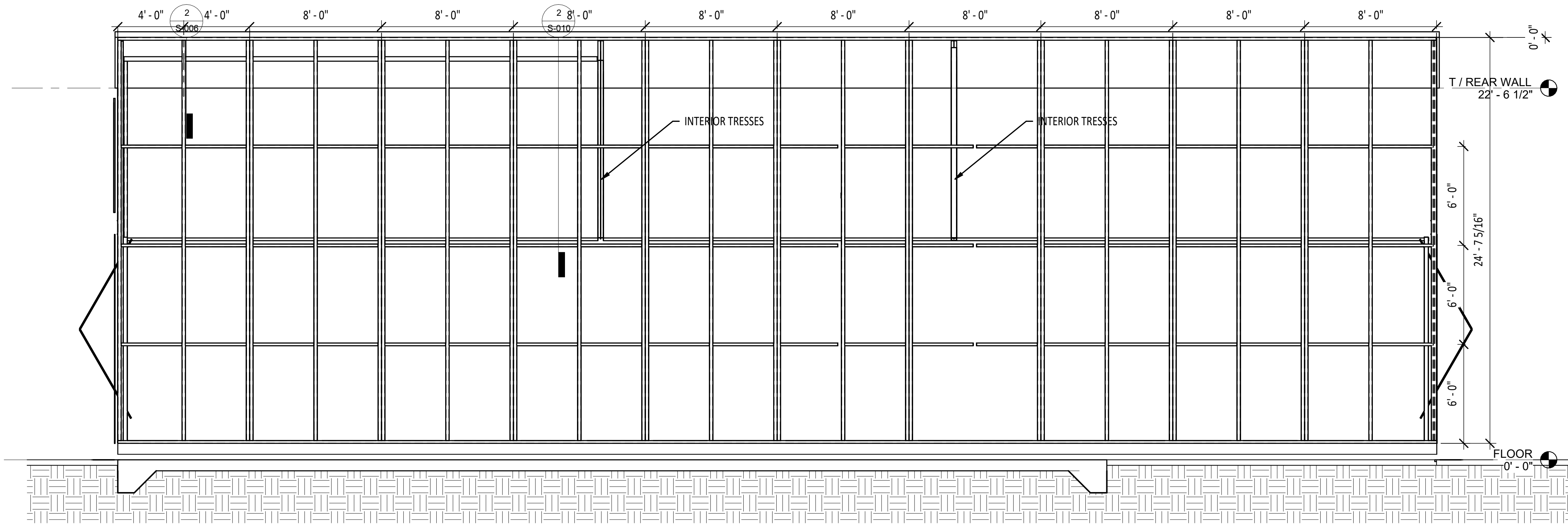


4/5/2023 10:31:50 AM
email: ggil@gillengineering.com

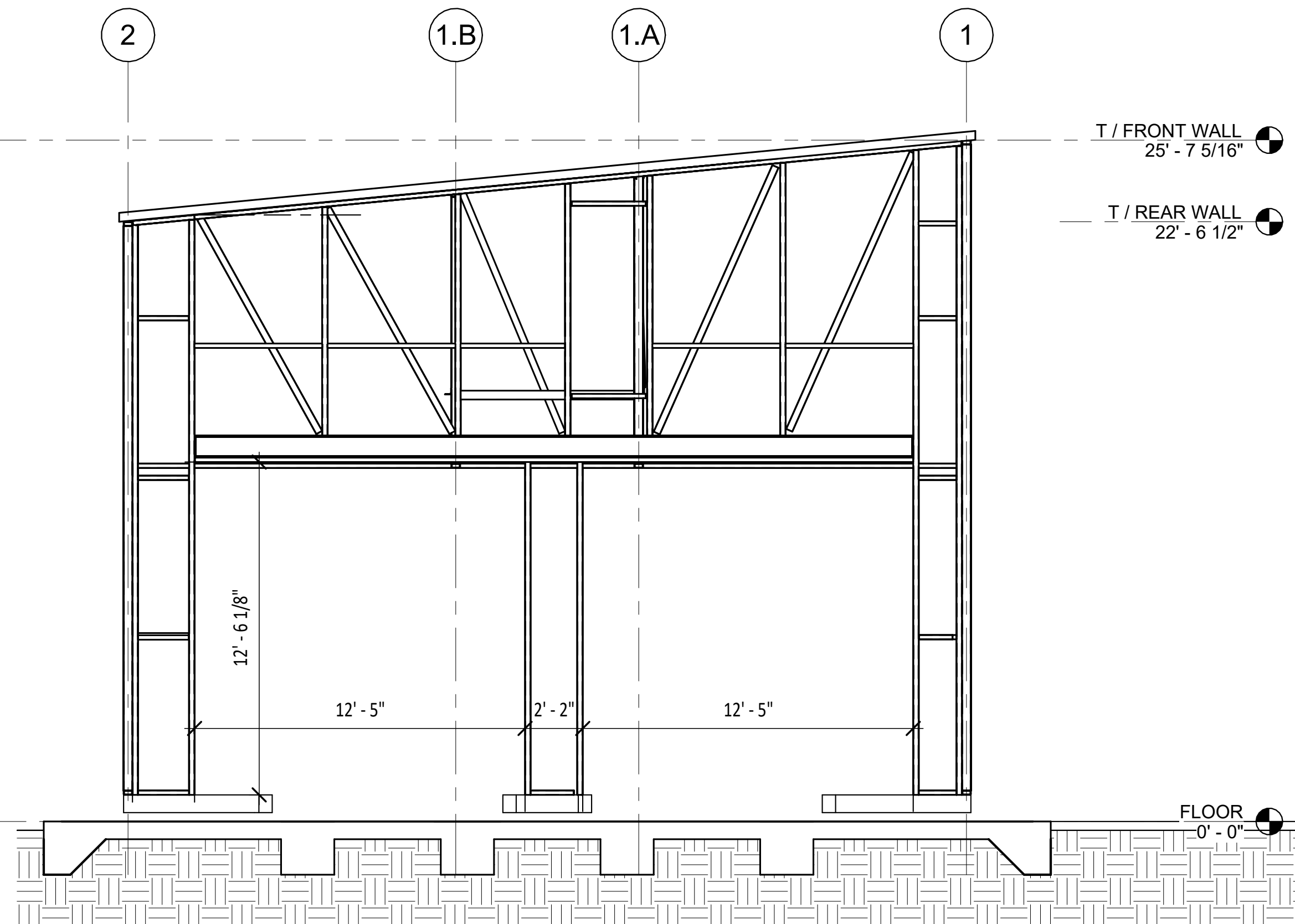


KILN				
COLUMBIA COUNTY, FL				
THE ROBINS		GILL ENGINEERING SERVICES, INC AUTH # 30824 GARY GILL PE #51942 426 SW COMMERCE DR 130-M LAKE CITY, FL 32025 386-590-1242		
DRAWN BY:	Author			
CHKD BY:	Checker			
APPRD BY:	Approver			
ROOF FRAMING PLAN				
PROJECT #:	DWG #:	REV #:		
2305-015	S-006	0		

Revision Schedule		
Revision Number	Revision Description	Revision Date
0	ISSUED FOR CONSTRUCTION	4/5/23



1 FRONT FRAMING
1/4" = 1'-0"



2 LEFT FRAMING
1/4" = 1'-0"

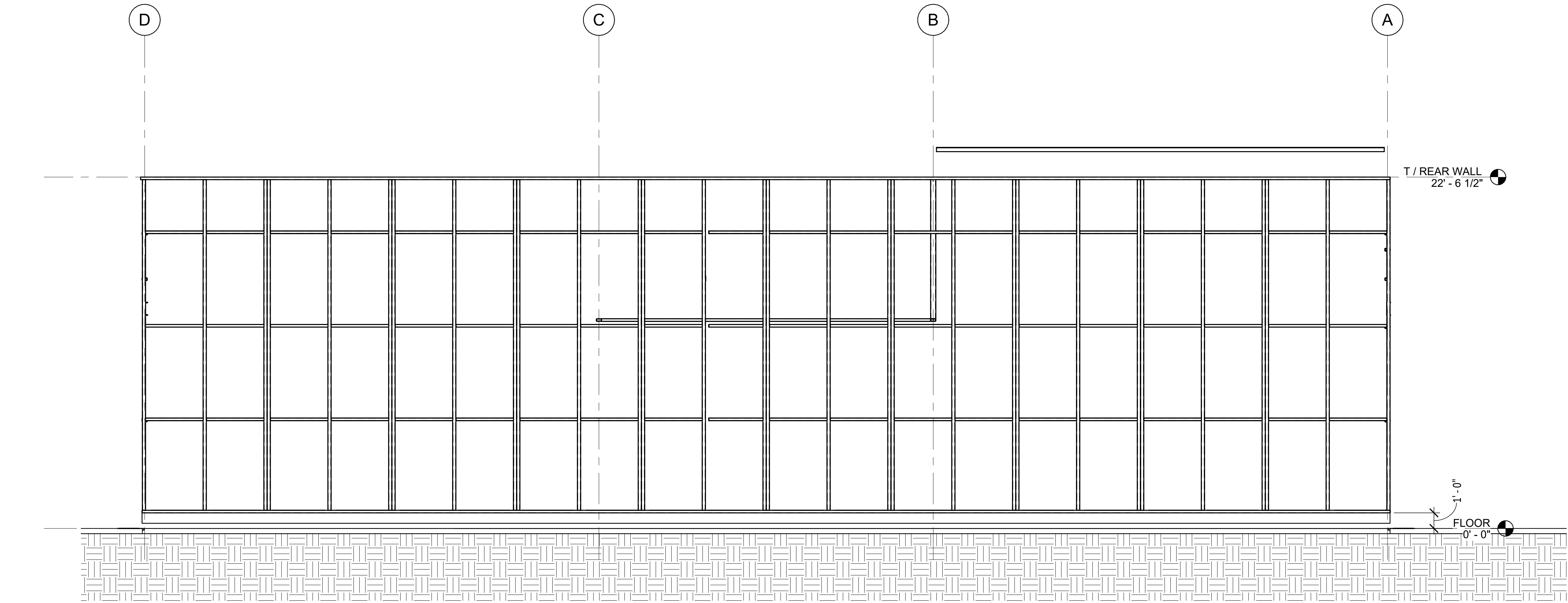
PRINTED COPIES OF THE DOCUMENT
ARE NOT CONSIDERED SIGNED AND SEALED
AND THE SIGNATURE MUST BE VERIFY ON
ANY ELECTRONIC COPIES



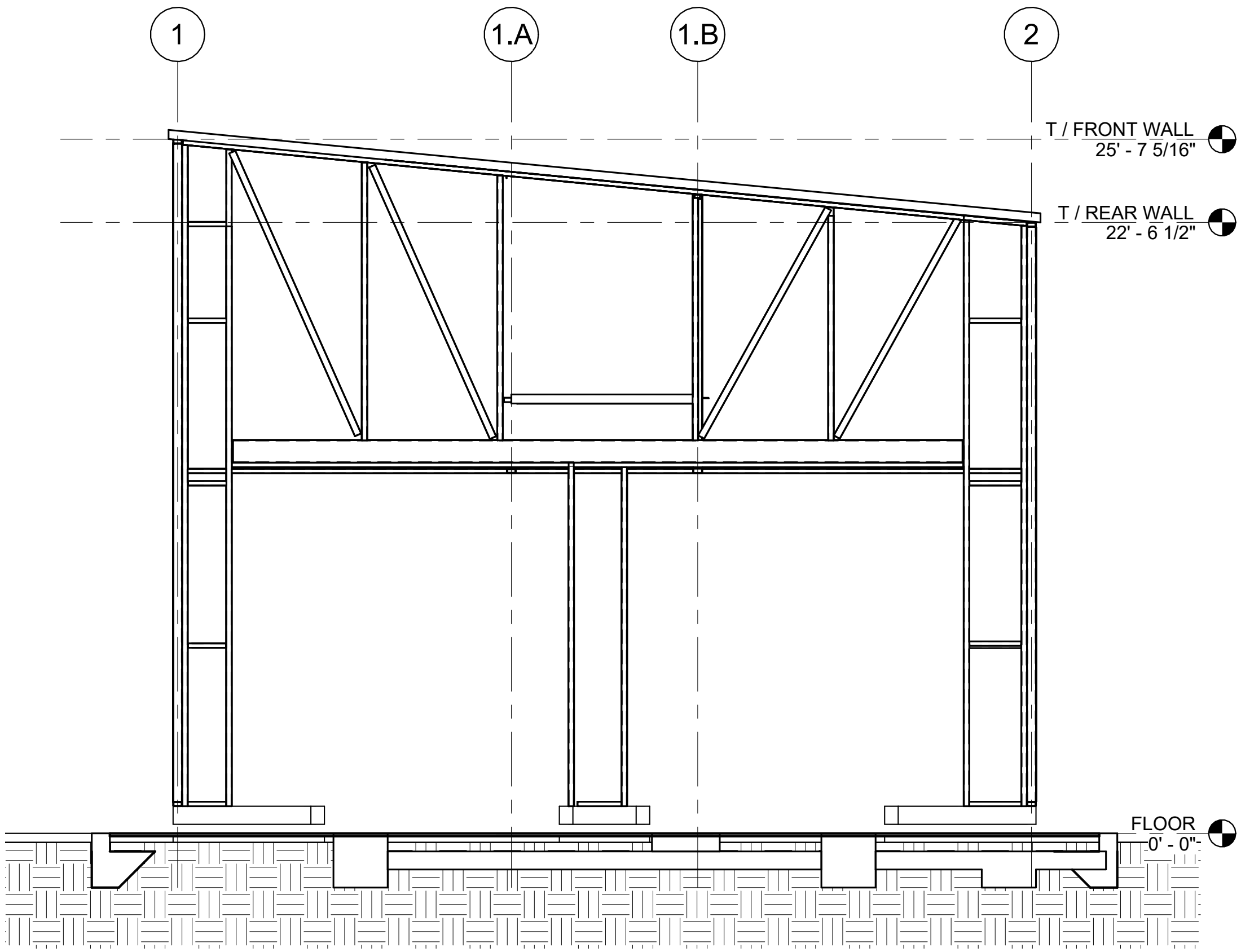
4/5/2023 10:31:52 AM
email: ggil@gillengineeringervices.com

KILN				
COLUMBIA COUNTY, FL				
THE ROBINS			GILL ENGINEERING SERVICES, INC AUTH # 30824 GARY GILL PE #51942 P.O. BOX 1420 LIVE OAK, FL 32064 386-590-1242	
DRAWN BY:	GG			
CHKD BY:	GG			
APPRD BY:	GG			
FRAMING ELEVATIONS				
PROJECT #: 2305-015		DWG #:	S-007	REV #: 0

Revision Schedule		
Revision Number	Revision Description	Revision Date
0	ISSUED FOR CONSTRUCTION	4/5/23



① REAR FRAMING
1/4" = 1'-0"



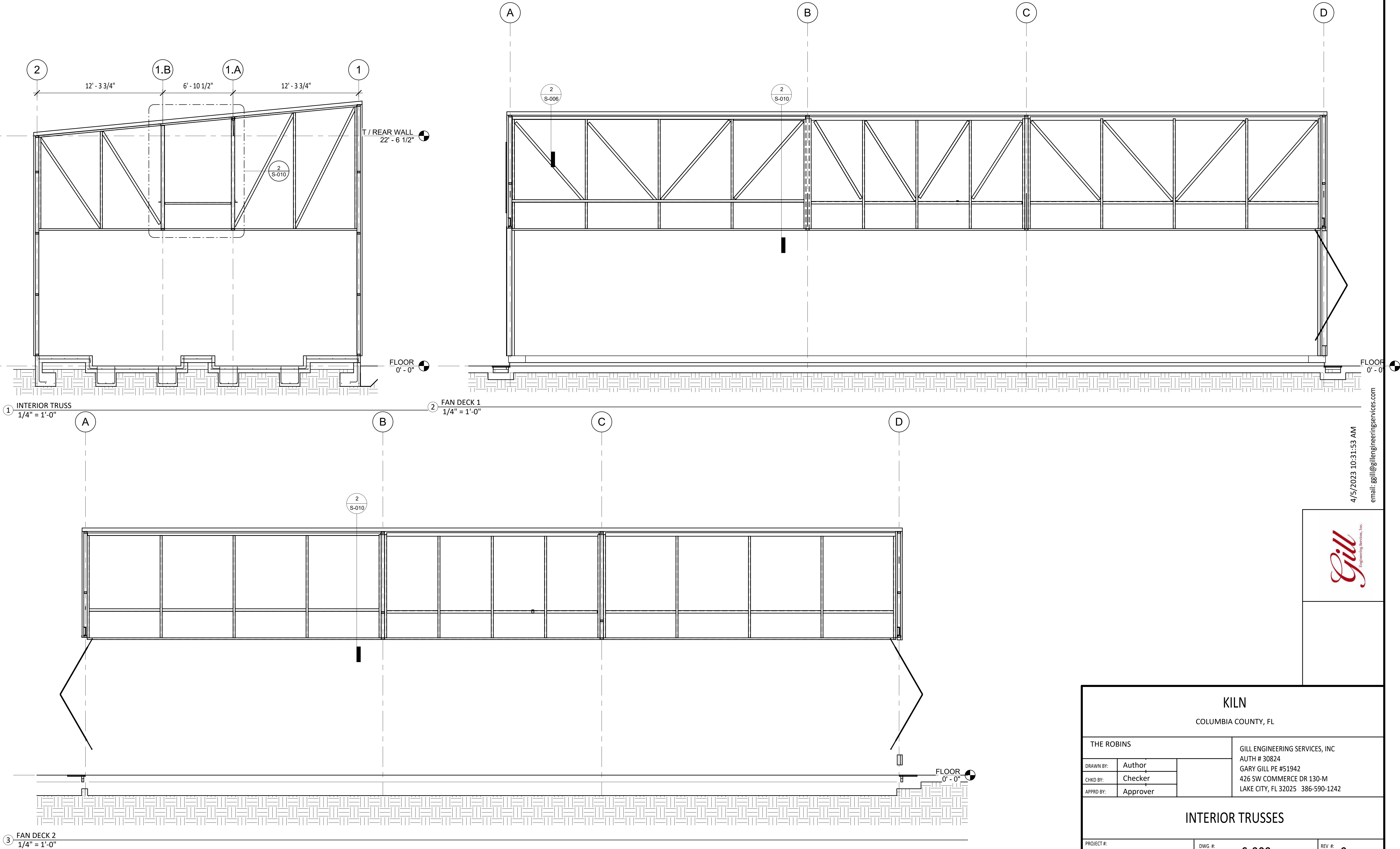
② RIGHT FRAMING
1/4" = 1'-0"

4/5/2023 10:31:53 AM
email: ggil@gillengineeringervices.com



KILN				
COLUMBIA COUNTY, FL				
THE ROBINS		GILL ENGINEERING SERVICES, INC AUTH # 30824 GARY GILL PE #51942 426 SW COMMERCE DR 130-M LAKE CITY, FL 32025 386-590-1242		
DRAWN BY:	Author			
CHKD BY:	Checker			
APPRD BY:	Approver			
FRAMING ELEVATIONS				
PROJECT #:	DWG #:	REV #:		
2305-015	S-008	0		

Revision Schedule		
Revision Number	Revision Description	Revision Date
0	ISSUED FOR CONSTRUCTION	4/5/23

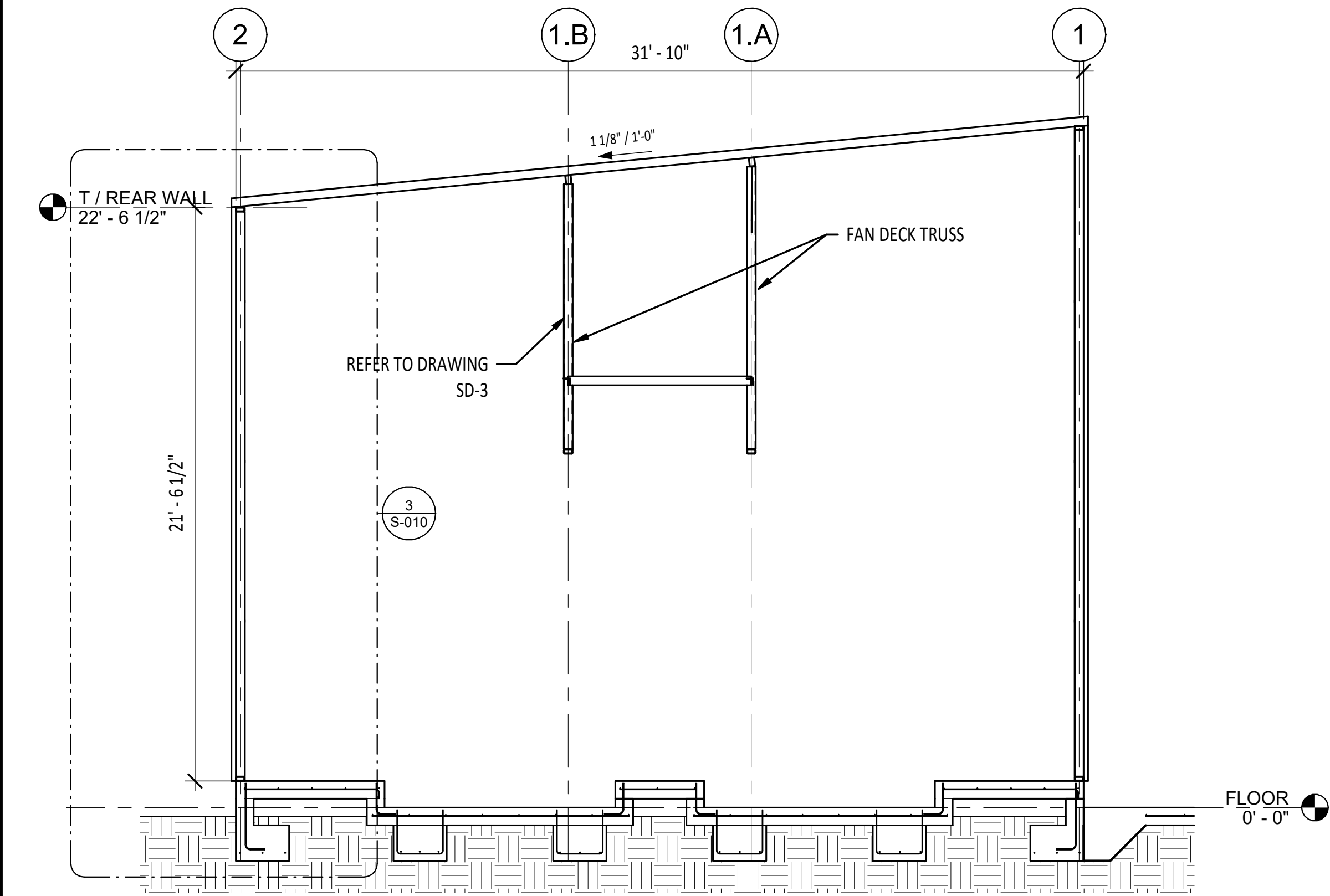


4/5/2023 10:31:53 AM
email: ggil@gillengineering.com

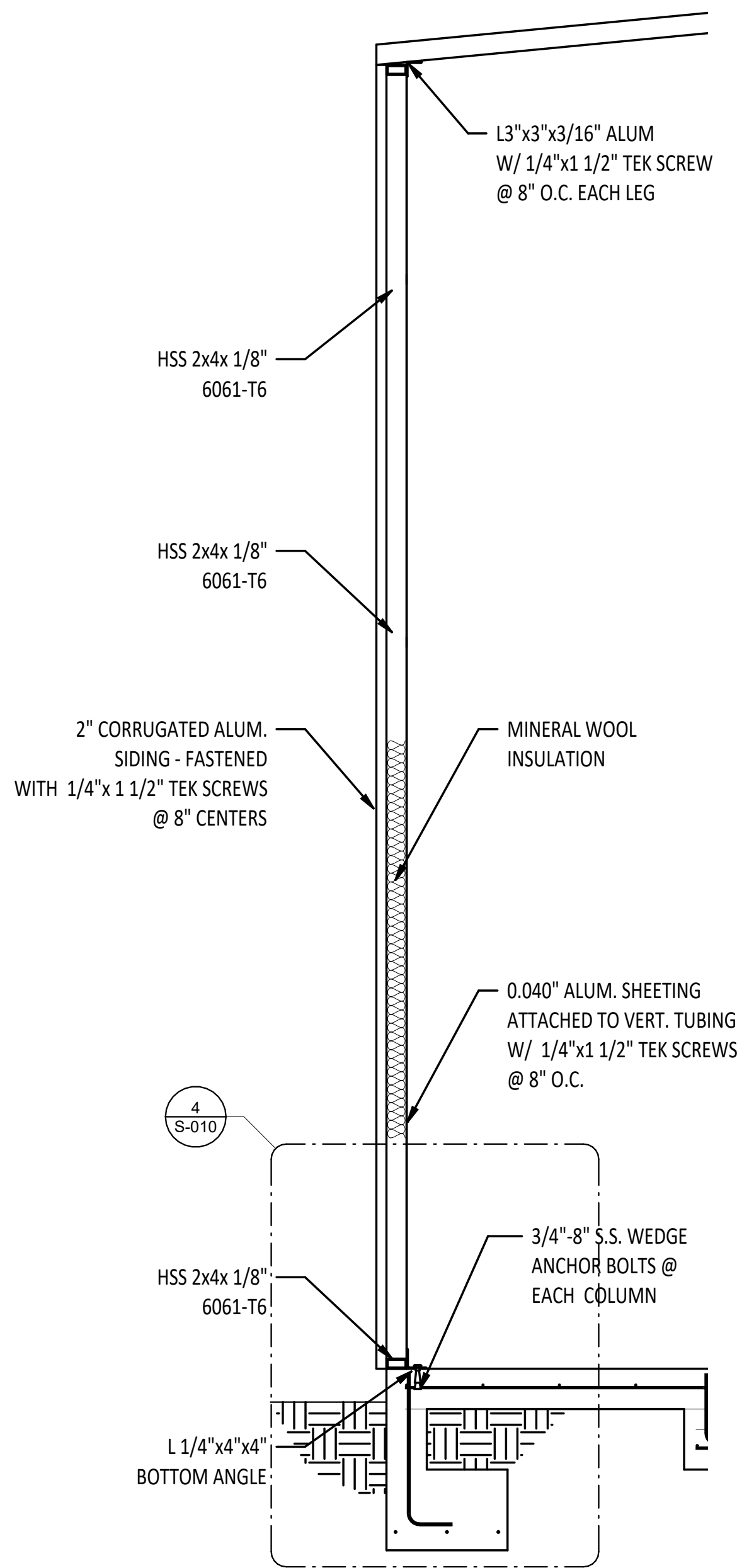


KILN				
COLUMBIA COUNTY, FL				
THE ROBINS		GILL ENGINEERING SERVICES, INC AUTH # 30824 GARY GILL PE #51942 426 SW COMMERCE DR 130-M LAKE CITY, FL 32025 386-590-1242		
DRAWN BY:	Author			
CHKD BY:	Checker			
APPRD BY:	Approver			
INTERIOR TRUSSES				
PROJECT #:		DWG #:	REV #:	
2305-015		S-009	0	

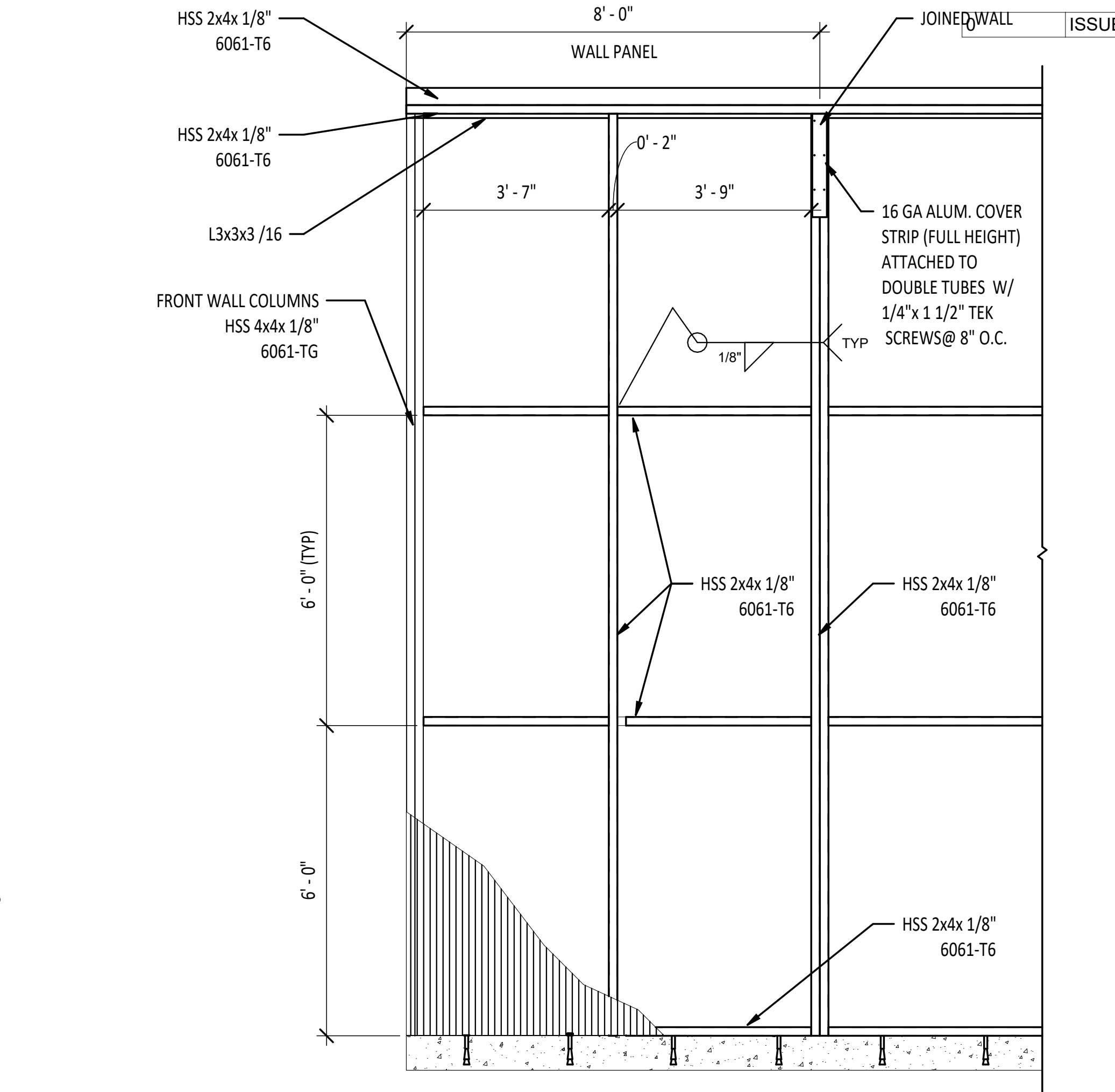
Revision Schedule		
Revision Number	Revision Description	Revision Date
0	ISSUED FOR CONSTRUCTION	4/5/23



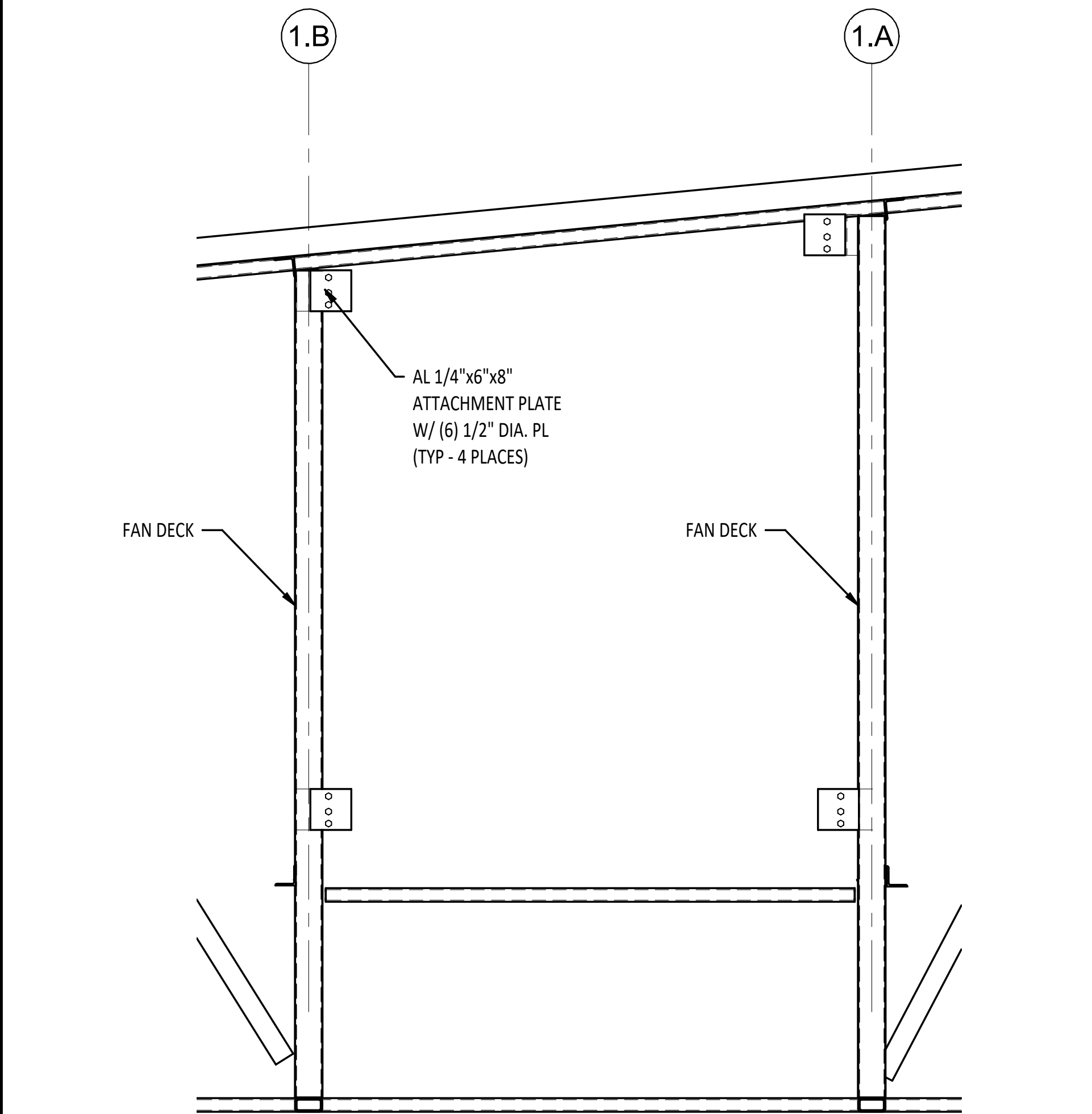
1 GENERAL BUILDING SECTION
1/4" = 1'-0"



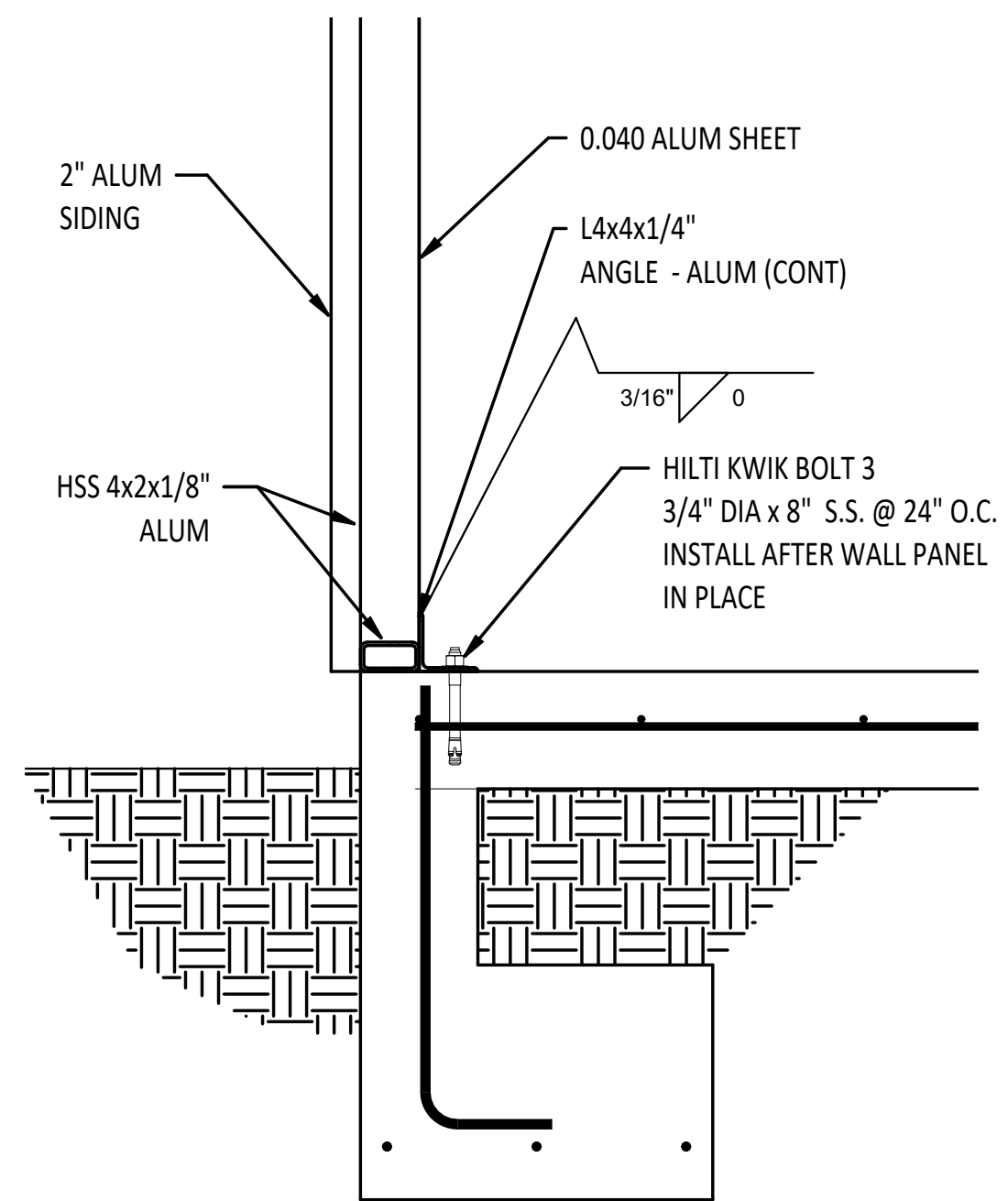
3 TYPICAL WALL SECTION
1/2" = 1'-0"



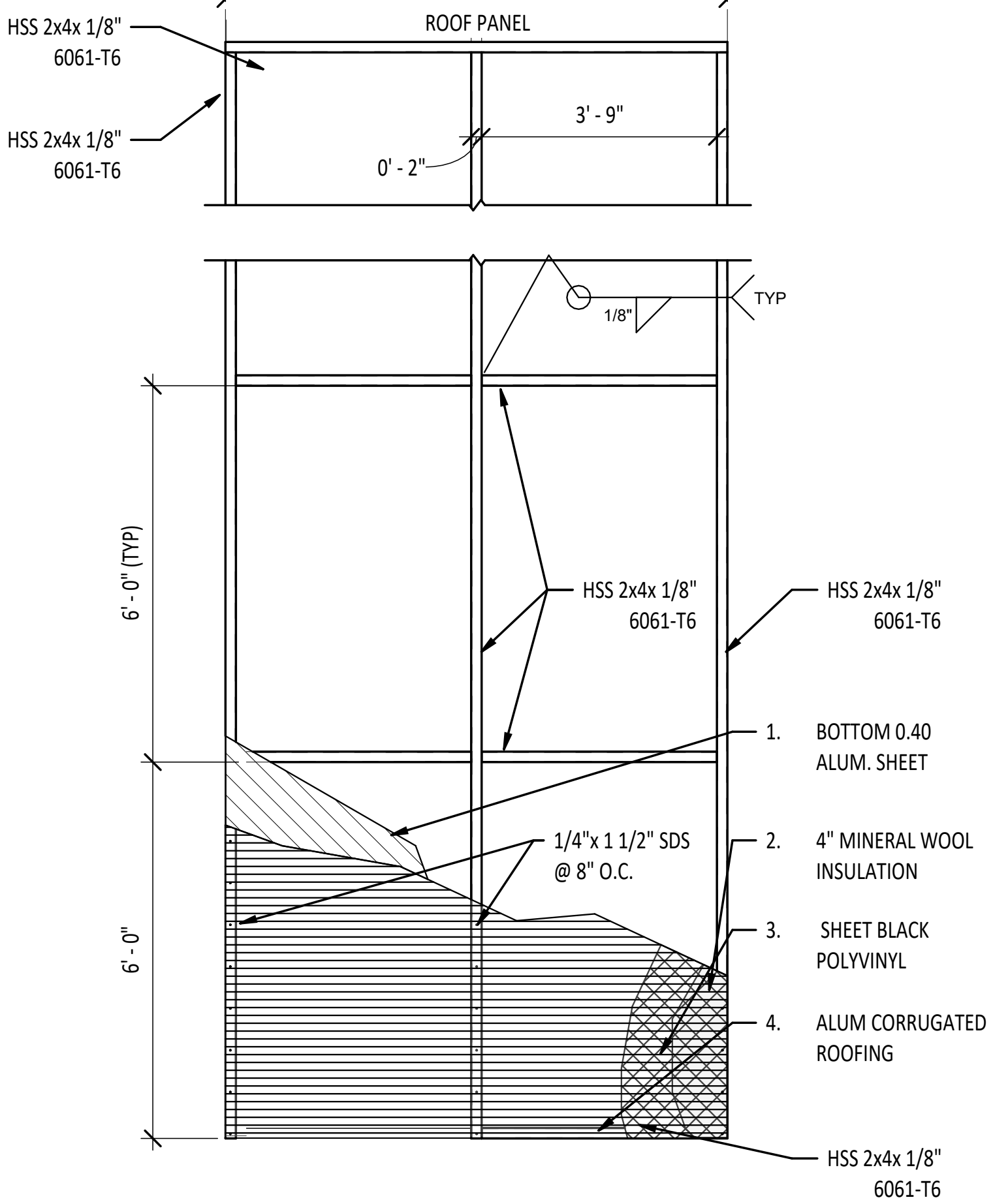
5 WALL PANEL ASSEMBLY
1/2" = 1'-0"



2 FAN DECK TRUSSES - TRUSS CONNECTION
3/4" = 1'-0"



4 WALL @ SLAB CONNECTION
1" = 1'-0"



6 ROOF PANEL ASSEMBLY
1/2" = 1'-0"

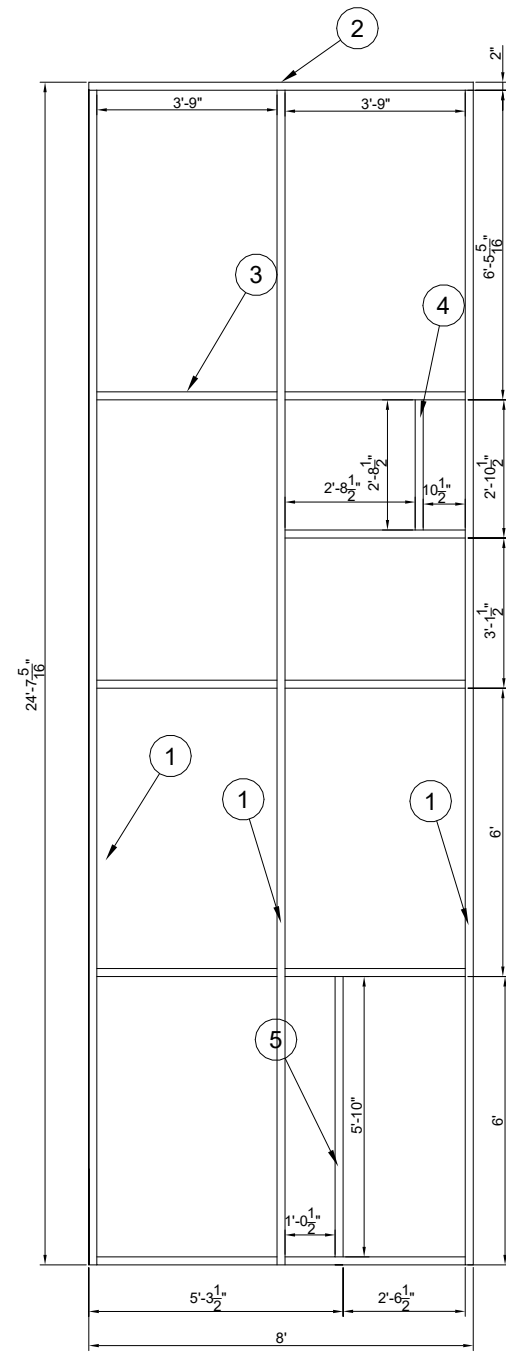
4/5/2023 10:31:54 AM
email: ggil@gillengineering.com



THE ROBINS			GILL ENGINEERING SERVICES, INC AUTH # 30824 GARY GILL PE #51942 426 SW COMMERCE DR 130-M LAKE CITY, FL 32025 386-590-1242
DRAWN BY:	Author		
CHKD BY:	Checker		
APPRD BY:	Approver		

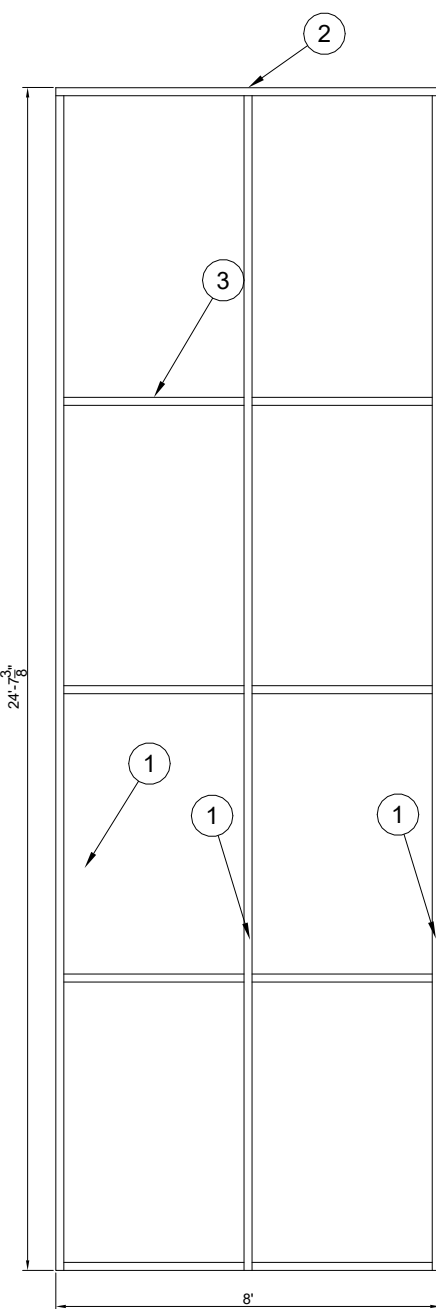
SECTIONS

PROJECT #:	DWG #:	REV #:
2305-015	S-010	0



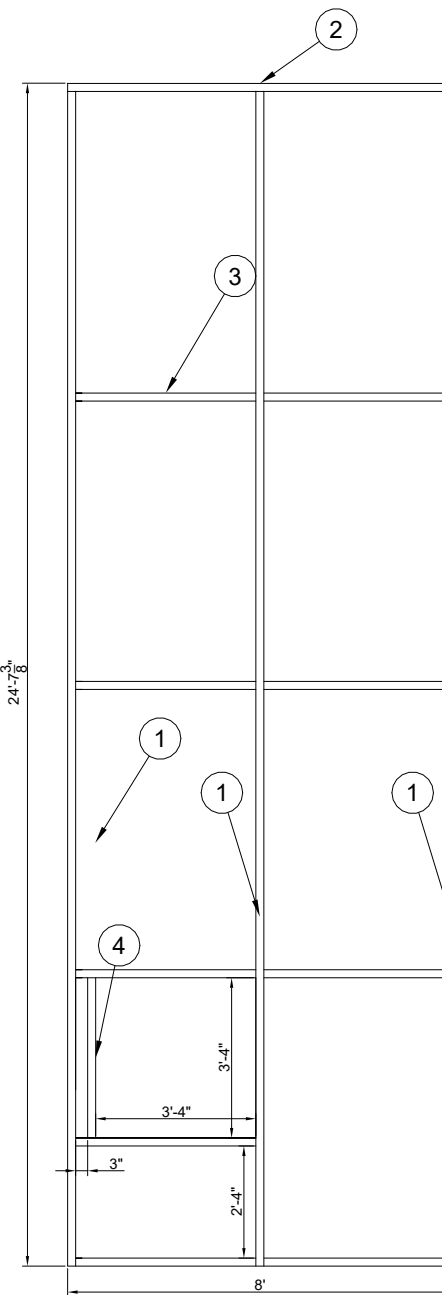
BILL OF MATERIALS FOR (1) ASSEMBLIES				
ITEM	REQ'D	MATERIAL	CUT LENGTH	NOTE
1	3	AI TUBING 1/8" X 2" X 4"	24'-7 5/16"	BUTT CUT
2	1	AI TUBING 1/8" X 2" X 4"	8'-0"	BUTT CUT
3	9	AI TUBING 1/8" X 2" X 4"	3'-9"	BUTT CUT
4	4	AI TUBING 1/8" X 2" X 4"	2'-8 1/2"	BUTT CUT
5	1	AI TUBING 1/8" X 2" X 4"	5'-10"	BUTT CUT

FRONT WALL "F1"
(2) REQUIRED



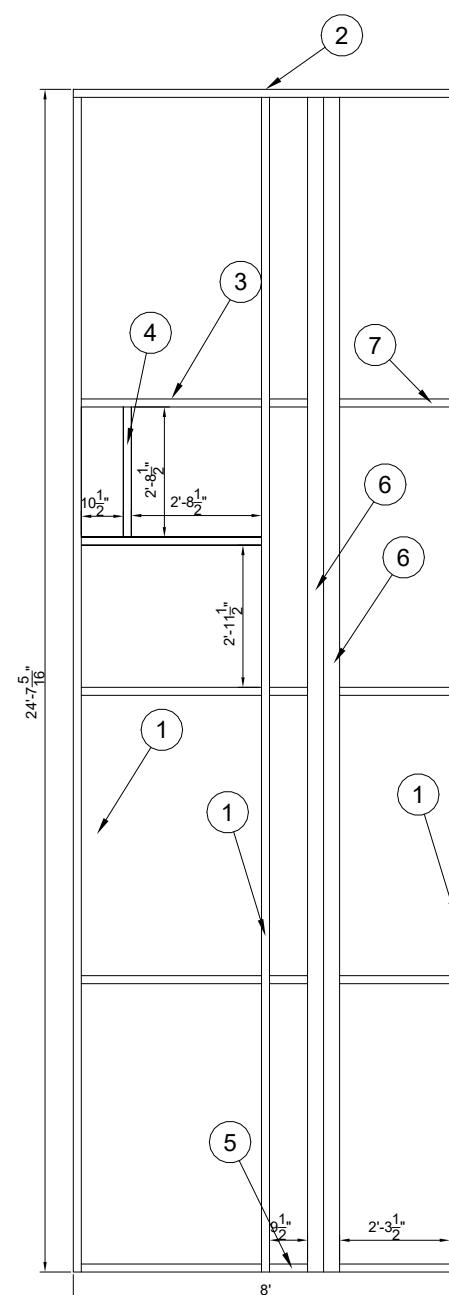
BILL OF MATERIALS FOR (1) ASSEMBLIES				
ITEM	REQ'D	MATERIAL	CUT LENGTH	NOTE
1	3	AI TUBING 1/8" X 2" X 4"	24'-7 5/16"	BUTT CUT
2	1	AI TUBING 1/8" X 2" X 4"	8'-0"	BUTT CUT
3	6	AI TUBING 1/8" X 2" X 4"	3'-9"	BUTT CUT
4				
5				
6				
7				

FRONT WALL "F2"
(2) REQUIRED



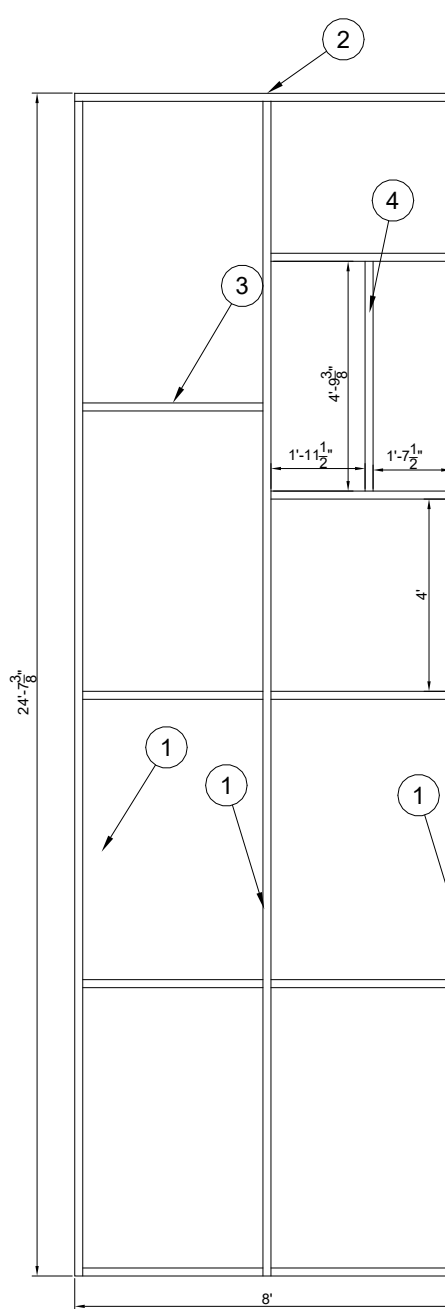
BILL OF MATERIALS FOR (1) ASSEMBLIES				
ITEM	REQ'D	MATERIAL	CUT LENGTH	NOTE
1	3	AI TUBING 1/8" X 2" X 4"	24'-7 5/16"	BUTT CUT
2	1	AI TUBING 1/8" X 2" X 4"	8'-0"	BUTT CUT
3	8	AI TUBING 1/8" X 2" X 4"	3'-9"	BUTT CUT
4	1	AI TUBING 1/8" X 2" X 4"	3'-4"	BUTT CUT
5				
6				
7				

FRONT WALL "F3"
(2) REQUIRED



BILL OF MATERIALS FOR (1) ASSEMBLIES				
ITEM	REQ'D	MATERIAL	CUT LENGTH	NOTE
1	3	AI TUBING 1/8" X 2" X 4"	24'-7 5/16"	BUTT CUT
2	1	AI TUBING 1/8" X 2" X 4"	8'-0"	BUTT CUT
3	5	AI TUBING 1/8" X 2" X 4"	3'-9"	BUTT CUT
4	1	AI TUBING 1/8" X 2" X 4"	2'-8 1/2"	BUTT CUT
5	4	AI TUBING 1/8" X 2" X 4"	9'-12"	BUTT CUT
6	2	AI TUBING 1/8" X 4" X 4"	21'-6 1/2"	BUTT CUT
7	4	AI TUBING 1/8" X 2" X 4"	2'-3 1/2"	BUTT CUT

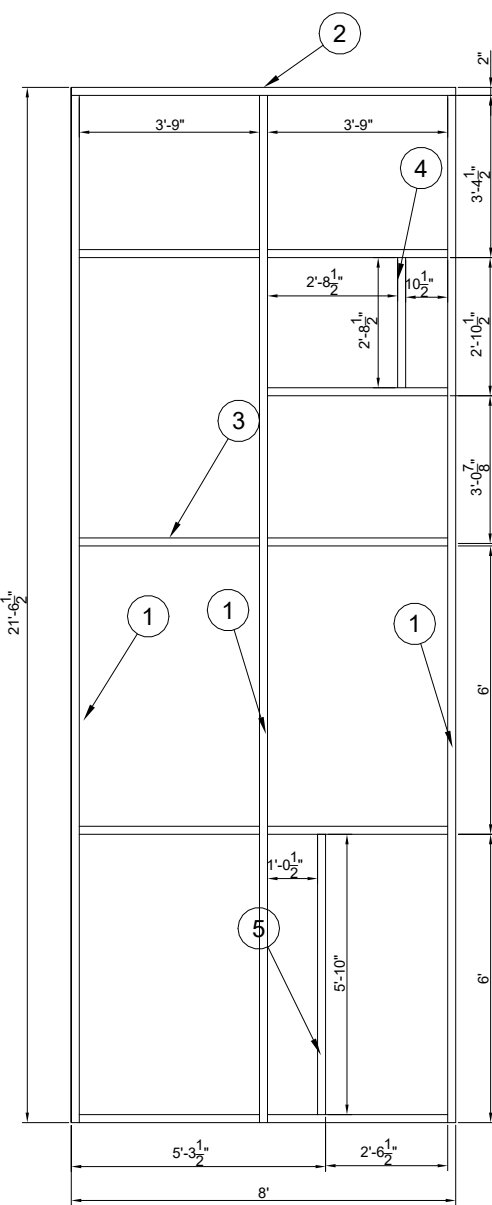
FRONT WALL "F4"
(2) REQUIRED



BILL OF MATERIALS FOR (1) ASSEMBLIES				
ITEM	REQ'D	MATERIAL	CUT LENGTH	NOTE
1	3	AI TUBING 1/8" X 2" X 4"	24'-7 5/16"	BUTT CUT
2	1	AI TUBING 1/8" X 2" X 4"	8'-0"	BUTT CUT
3	9	AI TUBING 1/8" X 2" X 4"	3'-9"	BUTT CUT
4	1	AI TUBING 1/8" X 2" X 4"	4'-9 3/8"	BUTT CUT
5				
6				
7				

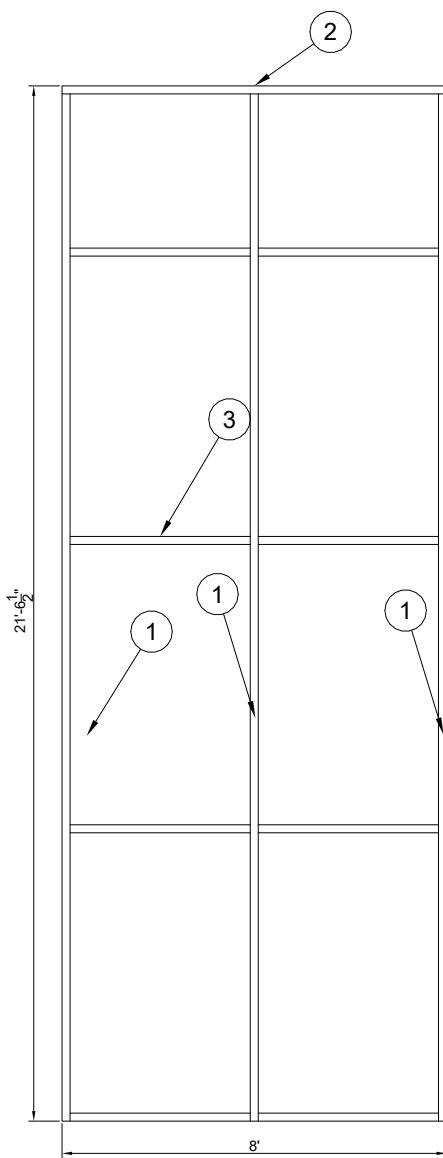
FRONT WALL "F5"
(2) REQUIRED

① FRONT WALLS
1/4" = 1'-0"



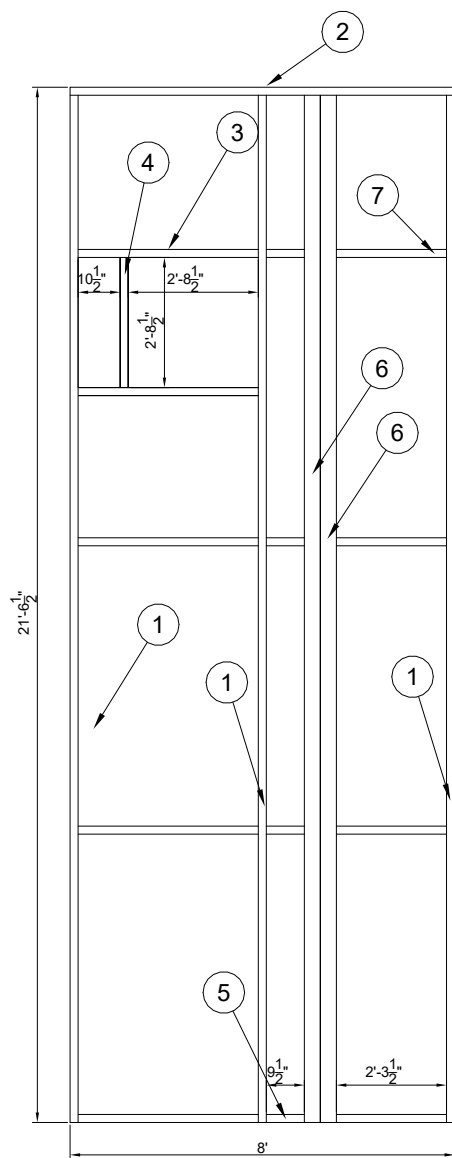
BILL OF MATERIALS FOR (1) ASSEMBLIES				
ITEM	REQ'D	MATERIAL	CUT LENGTH	NOTE
1	3	AI TUBING 1/8" X 2" X 4"	21'-6 1/2"	BUTT CUT
2	1	AI TUBING 1/8" X 2" X 4"	8'-0"	BUTT CUT
3	9	AI TUBING 1/8" X 2" X 4"	3'-9"	BUTT CUT
4	4	AI TUBING 1/8" X 2" X 4"	2'-8 1/2"	BUTT CUT
5	1	AI TUBING 1/8" X 2" X 4"	5'-10"	BUTT CUT

REAR WALL "R1"
(2) REQUIRED



BILL OF MATERIALS FOR (1) ASSEMBLIES				
ITEM	REQ'D	MATERIAL	CUT LENGTH	NOTE
1	3	AI TUBING 1/8" X 2" X 4"	21'-6 1/2"	BUTT CUT
2	1	AI TUBING 1/8" X 2" X 4"	8'-0"	BUTT CUT
3	6	AI TUBING 1/8" X 2" X 4"	3'-9"	BUTT CUT
4				
5				
6				
7				

REAR WALL "R2"
(6) REQUIRED



BILL OF MATERIALS FOR (1) ASSEMBLIES				
ITEM	REQ'D	MATERIAL	CUT LENGTH	NOTE
1	3	AI TUBING 1/8" X 2" X 4"	21'-6 1/2"	BUTT CUT
2	1	AI TUBING 1/8" X 2" X 4"	8'-0"	BUTT CUT
3	5	AI TUBING 1/8" X 2" X 4"	3'-9"	BUTT CUT
4	1	AI TUBING 1/8" X 2" X 4"	2'-8 1/2"	BUTT CUT
5	4	AI TUBING 1/8" X 2" X 4"	9'-12"	BUTT CUT
6	2	AI TUBING 1/8" X 4" X 4"	21'-6 1/2"	BUTT CUT
7	4	AI TUBING 1/8" X 2" X 4"	2'-3 1/2"	BUTT CUT

REAR WALL "R3"
(2) REQUIRED

② REAR WALLS
1/4" = 1'-0"



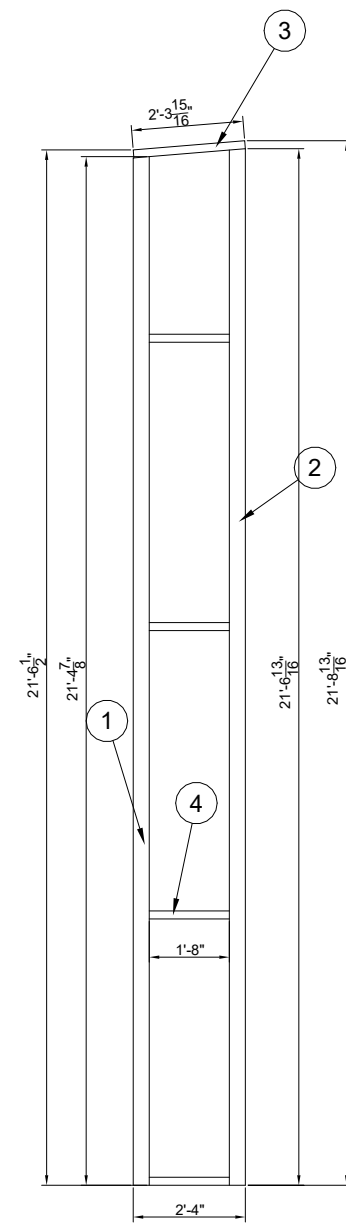
GILL ENGINEERING SERVICES, INC.
GARY GILL, P.E.
4265 SW COMMERCE DR. SUITE 130-M
LAKE CITY, FL 32025

BOLD DESIGNS INC. HUDSON, N.C.
2601 WITHERS DRIVE
HUDSON, NORTH CAROLINA, 28638
Ph: (828) 754-7001 Fax: (828) 754-7911

PREPARED FOR:
THE ROBINS
COLUMBIA COUNTY, FL

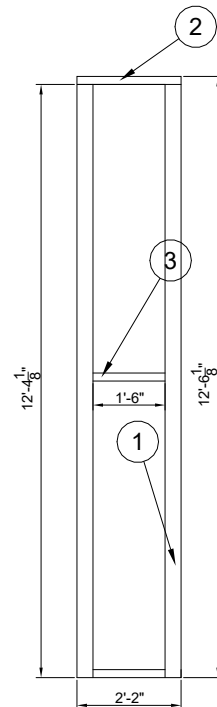
PROJECT:

FRONT AND REAR WALLS



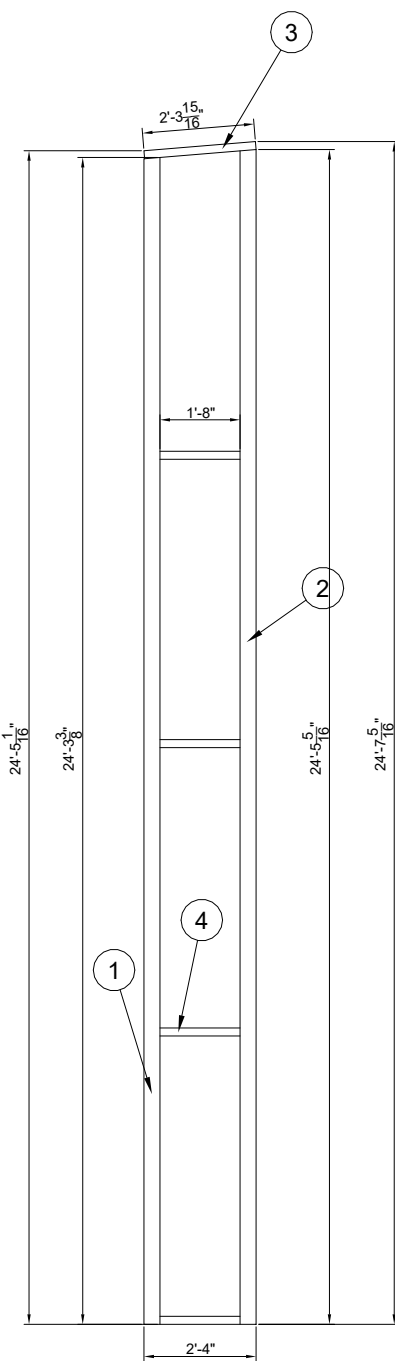
BILL OF MATERIALS FOR (1) ASSEMBLIES			
REQ'D	MATERIAL	CUT LENGTH	NOTE
1	AI TUBING 1/8" X 4" X 4"	21'-4 7/8"	5' ONE END
1	AI TUBING 1/8" X 4" X 4"	21'-6 13/16"	5' ONE END
1	AI TUBING 1/8" X 2" X 4"	2'-3 15/16"	BUTT CUT
4	AI TUBING 1/8" X 2" X 4"	1'-8"	BUTT CUT

SIDE WALL "S1"
(2) REQUIRED



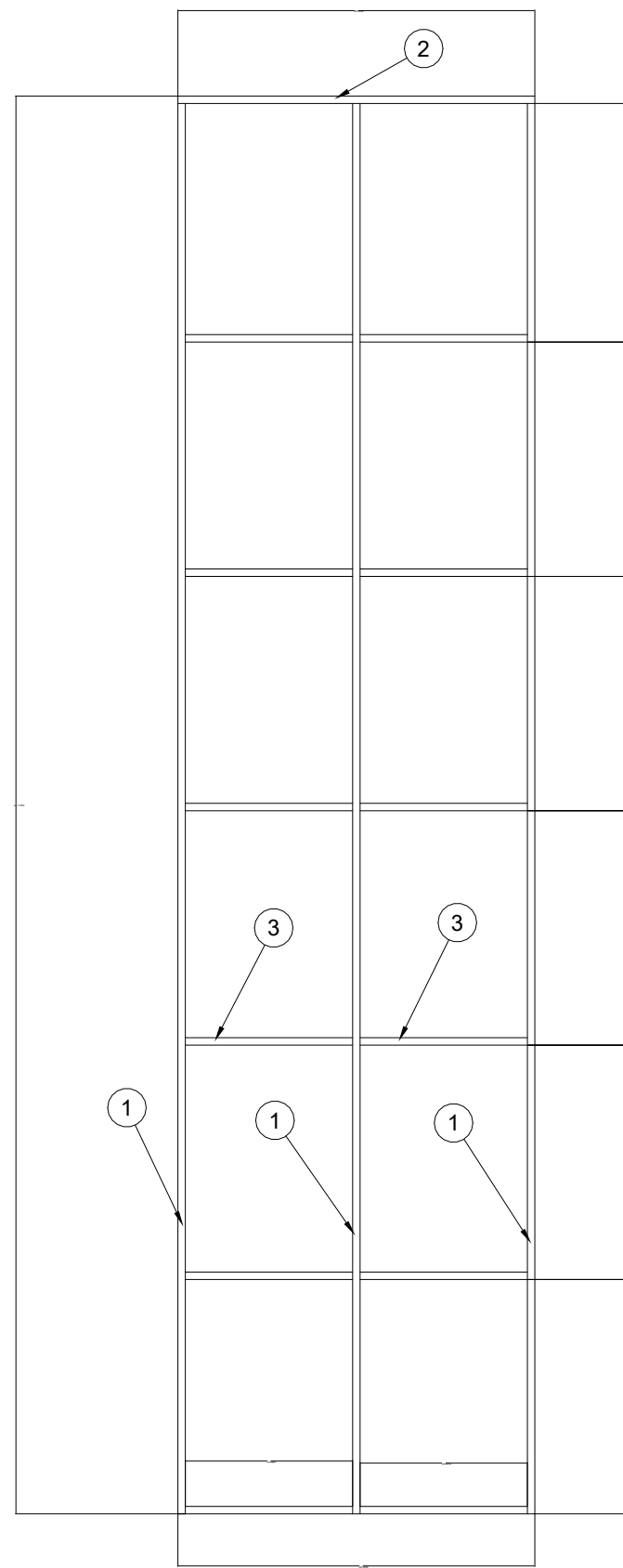
BILL OF MATERIALS FOR (1) ASSEMBLIES				
ITEM	REQ'D	MATERIAL	CUT LENGTH	NOTE
1	2	AI TUBING 1/8" X 4" X 4"	12'-4 1/8"	BUTT CUT
2	1	AI TUBING 1/8" X 4" X 4"	2'-2"	BUTT CUT
3	2	AI TUBING 1/8" X 2" X 4"	1'-6"	BUTT CUT
4				
5				

SIDE WALL "S2"
(2) REQUIRED



BILL OF MATERIALS FOR (1) ASSEMBLIES				
ITEM	REQ'D	MATERIAL	CUT LENGTH	NOTE
1	1	AI TUBING 1/8" X 4" X 4"	24'-3 3/8"	5' ONE END
2	1	AI TUBING 1/8" X 4" X 4"	24'-5 5/16"	5' ONE END
3	1	AI TUBING 1/8" X 2" X 4"	2'-3 15/16"	BUTT CUT
4	4	AI TUBING 1/8" X 2" X 4"	1'-8"	BUTT CUT
5				

SIDE WALL "S3"
(2) REQUIRED



BILL OF MATERIALS FOR (1) ASSEMBLIES				
ITEM	REQ'D	MATERIAL	CUT LENGTH	NOTE
1	3	AI TUBING 1/8" X 2" X 4"	31'-7 1/8"	BUTT CUT
2	1	AI TUBING 1/8" X 2" X 4"	8'-0"	BUTT CUT
3	12	AI TUBING 1/8" X 2" X 4"	3'-9"	BUTT CUT
4		AI TUBING 1/8" X 2" X 4"		BUTT CUT
5		AI TUBING 1/8" X 2" X 4"		BUTT CUT

ROOF PANELS
(10) REQUIRED

① ROOF PANEL AND SIDE
1/4" = 1'-0"



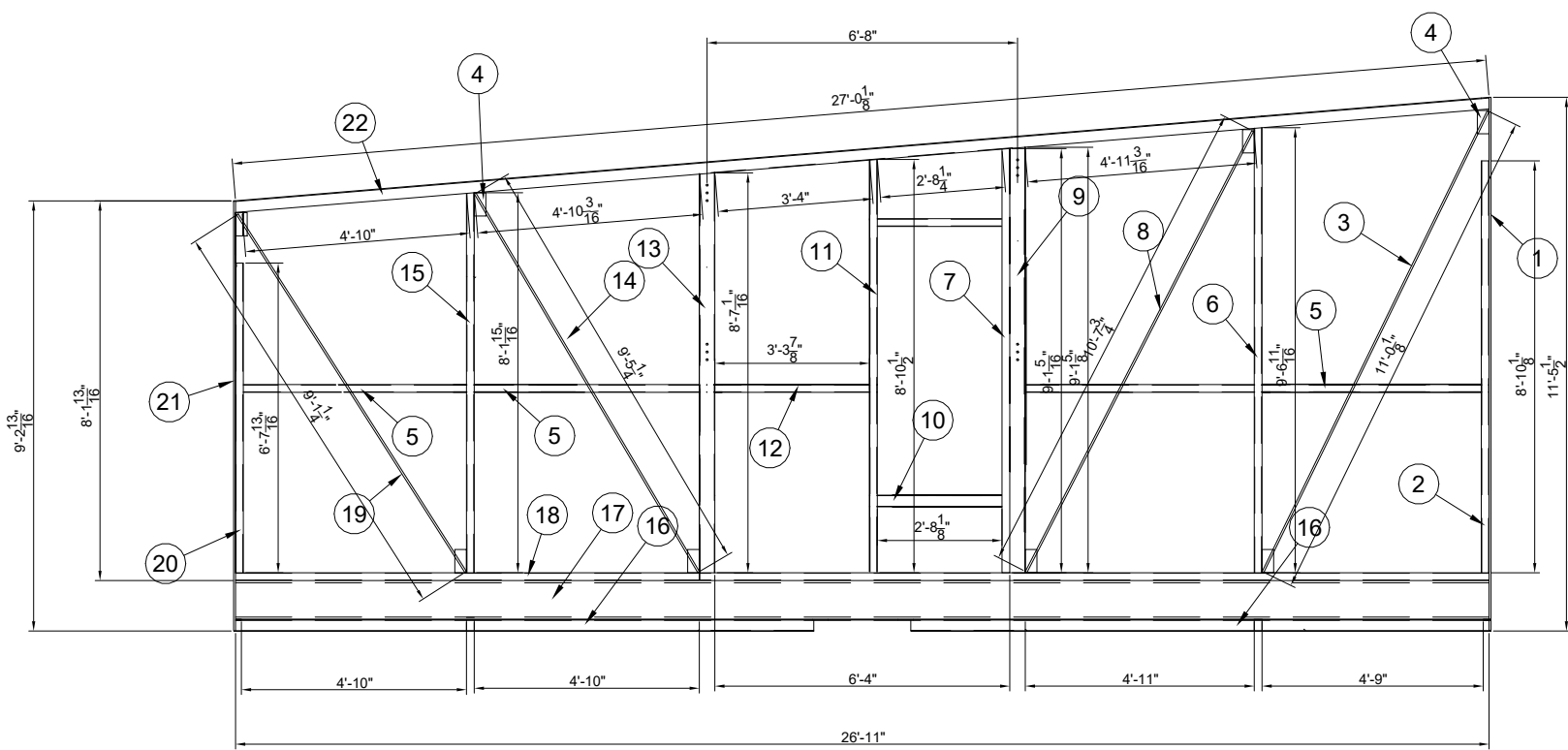
GILL ENGINEERING SERVICES, INC.
GARY GILL, P.E.
426 SW COMMERCE DR. SUITE 130-M
LAKE CITY, FL 32025

BOLD DESIGNS INC. HUDSON, N.C.
2601 WITHERS DRIVE
HUDSON, NORTH CAROLINA, 28638
Ph: (828) 754-7001 Fax: (828) 754-7911

PREPARED FOR:
THE ROBINS
COLUMBIA COUNTY, FL

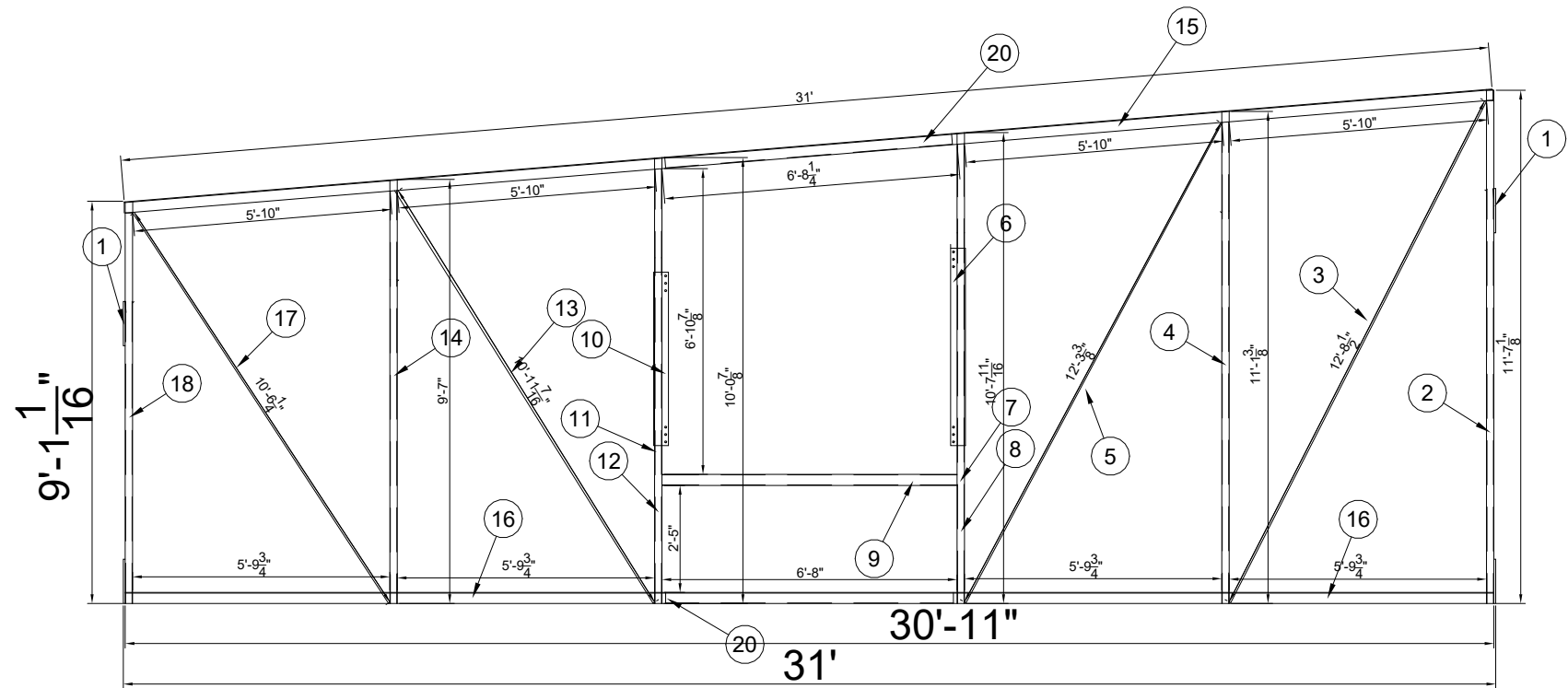
PROJECT:

ROOF PANEL AND SIDE



BILL OF MATERIALS FOR (1) ASSEMBLIES			
ITEM	REQ'D	MAT'L	SIZE
1	1	ALM FLAT	1/2" X 4" X 11'3 1/2" LG.
2	1	ALM TUB	1/8" X 2" X 4" X 8' 10" LG.
3	1	ALM FLAT	1/2" X 3" X 11'0 1/8" LG.
4	4	ALM FLAT	1/2" X 3" X 6" LG.
5	4	ALM TUB	1/8" X 2" X 4" X 4'9"
6	1	ALM TUB	1/8" X 2" X 4" X 9' 6 11/16" LG.
7	1	ALM TUB	1/8" X 2" X 4" X 9' 15 1/16" LG.
8	1	ALM FLAT	1/2" X 3" X 10'7 3/4" LG.
9	1	ALM TUB	1/8" X 4" X 4" X 1'9 1/8" LG.
10	2	ALM TUB	1/8" X 2" X 4" X 2' X 8 1/8" LG.
11	1	ALM TUB	1/8" X 2" X 4" X 9' 10 1/2" LG.
12	1	ALM TUB	1/8" X 2" X 4" X 3'3 7/8" LG.
13	1	ALM TUB	1/8" X 2" X 4" X 9'7 1/8" LG.
14	1	ALM FLAT	1/2" X 3" X 9'5 1/4" LG.
15	1	ALM TUB	1/8" X 4" X 4" X 7' 15 1/16" LG.
16	2	ALM ANGLE	3/16" X 3" X 3" X 12'5 1/2" LG.
17	1	ALM CHANNEL	4" X 10" X 10" LG.
18	1	ALM TUB	1/8" X 2" X 4" X 2'28' X 11" LG.
19	1	ALM FLAT	1/2" X 3" X 9'1 1/4" LG.
20	1	ALM TUB	1/8" X 2" X 4" X 9'7 13/16" LG.
21	1	ALM FLAT	1/2" X 4" X 2'2 13/16" LG.
22	1	ALM TUB	1/8" X 2" X 4" X 27' X 2" LG.

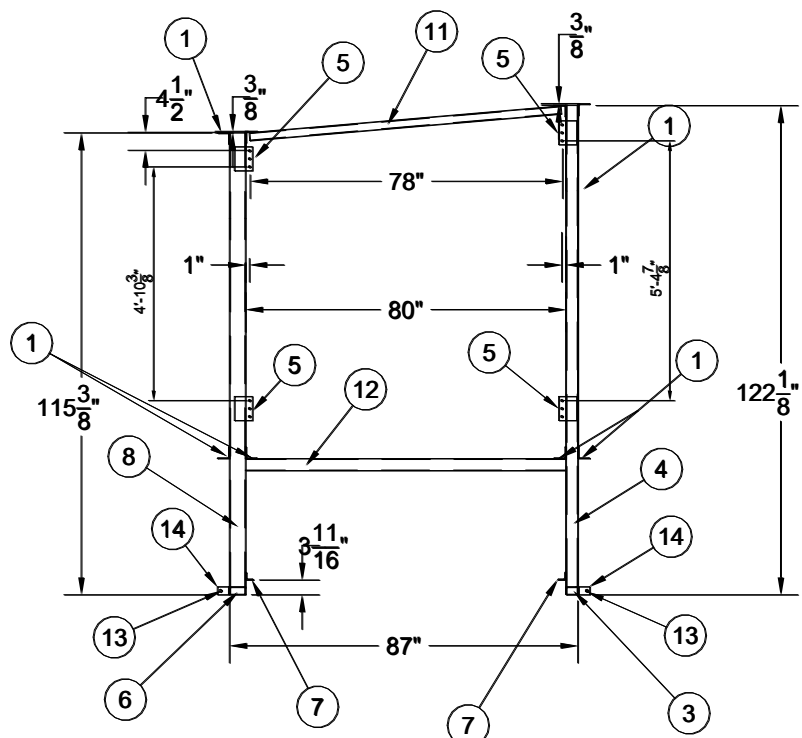
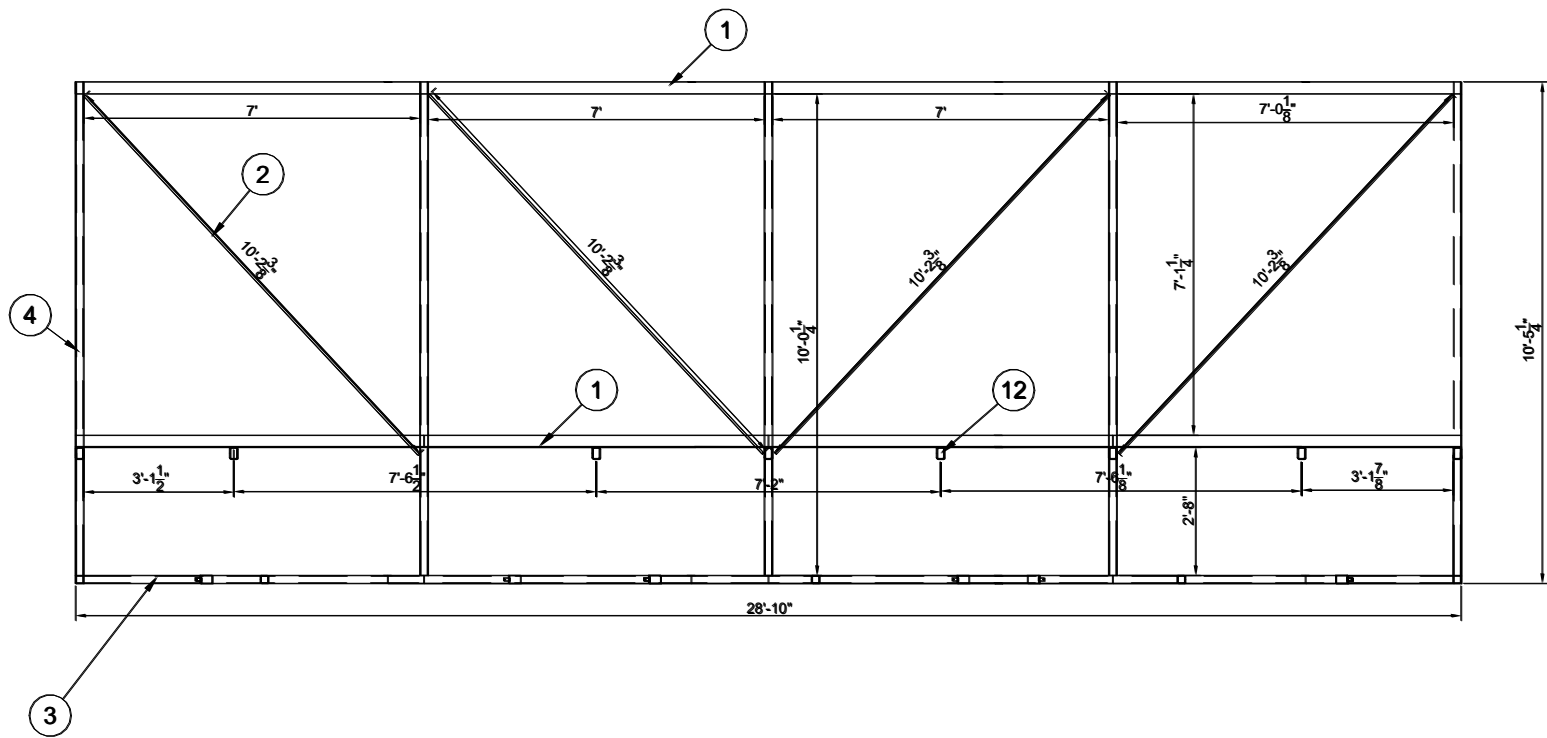
DOOR END TRUSS TWO REQUIRED MAKE 1) RIGHT, 1) LEFT WITHOUT MAN DOOR



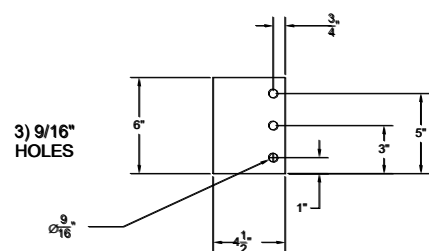
BILL OF MATERIALS FOR (1) ASSEMBLIES			
ITEM	REQ'D	MAT'L	SIZE
1	4	ALM FLAT	1/2" X 6" X 12" LG.
2	1	ALM TUB	1/8" X 2" X 3" X 11' 7 1/8" LG.
3	1	ALM FLAT	3/4" X 3" X 12'8 1/2" LG.
4	1	ALM TUB	1/8" X 2" X 3" X 11'1 3/8" LG.
5	1	ALM FLAT	3/4" X 3" X 12'3 3/8" LG.
6	1	ALM CHANNEL	4" X 10" X 1" LG.
7	2	ALM FLAT	1/4" X 3" X 1" LG.
8	1	ALM TUB	1/8" X 2" X 3" X 10'7 11/16" LG.
9	1	ALM TUB	1/8" X 2" X 3" X 10' X 8" LG.
10	1	ALM CHANNEL	4" X 10" X 1" LG.
11	1	ALM FLAT	1/4" X 3" X 1" LG.
12	1	ALM TUB	1/8" X 2" X 3" X 10'0 7/8" LG.
13	1	ALM FLAT	3/4" X 3" X 10'11 7/16" LG.
14	1	ALM TUB	1/8" X 2" X 3" X 9'7 7/8" LG.
15	2	ALM ANGLE	3/16" X 3" X 3" X 31'0" LG.
16	2	ALM ANGLE	3/16" X 3" X 3" X 30'11" LG.
17	1	ALM FLAT	3/4" X 3" X 10'6 1/4" LG.
18	1	ALM TUB	1/8" X 2" X 3" X 9' 1 11/16" LG.
19			
20	2	ALM TUB	1/8" X 2" X 3" X 6" X 6" LG.
21			
22			

INTERIOR TRUSS TWO REQUIRED

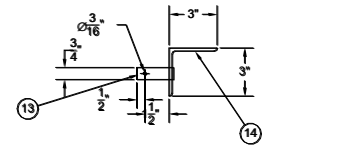
1 TRUSSES FRAMING
1/4" = 1'-0"



ELEVATION OF SIDE OF TRUSS



DETAIL OF PART # 5

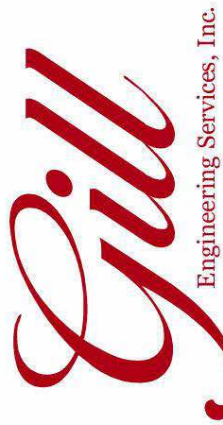


DETAIL OF PART # 13 AND # 14

BILL OF MATERIALS FOR (1) ASSEMBLIES			
ITEM	REQ'D	MAT'L	SIZE
1	8	ALM ANGLE	3/16" X 3" X 3" X 28' 10" LG.
2	4	ALM FLAT	1/2" X 3" X 10'3 3/8" LG.
3	1	ALM TUB	1/8" X 2" X 3" X 28' 10" LG.
4	9	ALM TUB	1/8" X 2" X 3" X 10'5 1/4" LG.
5	8	ALM FLAT	1/2" X 6" X 4 1/2" LG.
6	1	ALM TUB	1/8" X 2" X 3" X 28' 10" LG.
7	2	ALM TUB	1/8" X 2" X 3" X 28' 10" LG.
8	10	ALM TUB	1/8" X 2" X 3" X 10" LG.
9	3	ALM PLATE	1/8" X 6" X 29" LG.
10	2	ALM PLATE	1/8" X 6" X 51" LG.
11	4	ALM TUB	1/8" X 2" X 3" X 10" LG.
12	17	ALM TUB	1/8" X 2" X 3" X 6" LG.
13	20	ROUND	3/4" DIAMETER X 2' LONG
14	20	ALM ANGLE	3/16" X 3" X 3" X 2" LG.

FAN DECK (2) REQUIRED

2 FAN DECK
1/4" = 1'-0"



GILL ENGINEERING SERVICES, INC.
GARY GILL, P.E.
426 SW COMMERCE DR. SUITE 130-M
LAKE CITY, FL 32025

BOLD DESIGNS INC. HUDSON, N.C.
2601 WITHERS DRIVE
HUDSON, NORTH CAROLINA, 28638
Ph: (828) 754-7001 Fax: (828) 754-7911

PREPARED FOR:
THE ROBINS
COLUMBIA COUNTY, FL

PROJECT:

DOOR TRUSSES AND FAN DECKS