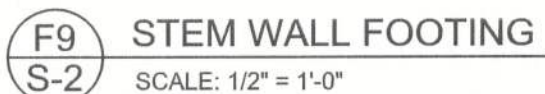
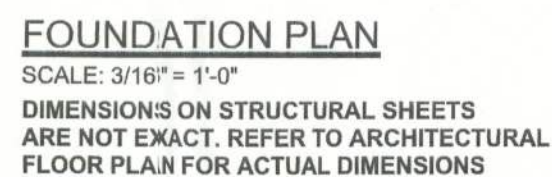


**SOFTPLAN**  
ARCHITECTURAL DESIGN SOFTWARE



The table assumes 60 ksi reinforcing bars with 6" hook in the footing and bent 24" into the reinforced slab at the top. The vertical steel is to be placed toward the tension side of the CMU wall (away from the soil pressure, within 2" of the exterior side of the wall). If the wall is over 8' high, add Duowall ladder reinforcement at 16"OC vertically or a horizontal bond beam with #5 continuous at mid height. For higher parts of the wall 12" CMU may be used with reinforcement as shown in the table below.

STEM WALL HEIGHT (FEET)	UNBALANCE BACKFILL HEIGHT	VERTICAL REINFORCEMENT FOR 6" CMU STEM WALL (INCHES O.C.)			VERTICAL REINFORCEMENT FOR 12" CMU STEM WALL (INCHES O.C.)		
		#5	#7	#8	#5	#7	#8
3.3	3.0	96	96	96	96	96	96
4.0	3.7	96	96	96	96	96	96
4.7	4.3	88	96	96	96	96	96
5.3	5.0	56	96	96	96	96	96
6.0	5.7	40	80	96	80	96	96
6.7	6.3	32	56	80	56	96	96
7.3	7.0	24	40	56	40	80	96
8.0	7.7	16	32	48	32	64	80
8.7	8.3	8	24	32	24	48	64
9.3	9.0	8	16	24	16	40	48



Mal. D. 04 OCT 07

**S-2**  
OF 3 SHEETS