



W.W. GAY FIRE & INTEGRATED SYSTEMS, INC.

522 STOCKTON STREET • JACKSONVILLE, FL 32204 • PHONE 904-387-7973 • WWW.WWGFP.COM



FIRE PROTECTION MATERIAL SUBMITTALS

FOR:

Dollar General Lake City Water Storage Tank

**4357 COUNTY RD 242
LAKE CITY, FL 32024**

Date:	September 7, 2021
Our Project Number:	FP-275291
Project Manager:	Richard Bloom
Prepared By:	AHB

The materials submitted represent the quality of materials specified. All materials may be substituted at this contractor's discretion for like equivalent materials.

**W. W. Gay Fire & Integrated Systems, Inc.
2500 N.E. 18th Terrace
Gainesville, Florida 32609
(352) 380-0317**

TABLE OF CONTENTS

- 1. PIPE & FITTINGS**
- 2. VALVES**
- 3. CONNECTIONS**

PIPE & FITTINGS

Product Specifications

System: **PVC Schedule 40 Pressure Pipe and Fitting System**

Scope: This specification covers PVC Schedule 40 pipe and fittings for pressure applications. This system is intended for pressure applications where the operating temperature will not exceed 140°F.

Specification: Pipe and fittings shall be manufactured from virgin rigid PVC (polyvinyl chloride) vinyl compounds with a Cell Class of 12454 as identified in ASTM D 1784.

PVC Schedule 40 pipe shall be Iron Pipe Size (IPS) conforming to ASTM D 1785. PVC Schedule 40 fittings shall conform to ASTM D 2466. Pipe and fittings shall be manufactured as a system and be the product of one manufacturer. All pipe and fittings shall be manufactured in the United States. Pipe and fittings shall conform to NSF International Standard 61 or the health effects portion of NSF Standard 14.

Installation shall comply with the latest installation instructions published by Charlotte Pipe and Foundry and shall conform to all applicable plumbing, building, and fire code requirements. Buried pipe shall be installed in accordance with ASTM F 1668 and ASTM D 2774. Solvent cement joints shall be made in a two step process with primer conforming to ASTM F 656 and solvent cement conforming to ASTM D 2564. The system shall be protected from chemical agents, fire stopping materials, thread sealant, plasticized vinyl products, or other aggressive chemical agents not compatible with PVC compounds. Systems shall be hydrostatically tested after installation. **WARNING!** Never test with or transport/store compressed air or gas in PVC pipe or fittings.

Referenced Standards*:

ASTM D 1784	Rigid Vinyl Compounds
ASTM D 1785	PVC Plastic Pipe, Schedule 40
ASTM D 2466	PVC Plastic Fittings, Schedule 40
ASTM D 2564	Solvent Cements for PVC Pipe and Fittings
ASTM D 2774	Underground Installation of Thermoplastic Pressure Piping
ASTM F 656	Primers for PVC Pipe and Fittings
ASTM F 1668	Procedures for Buried Plastic Pipe
NSF Standard 14	Plastic Piping Components and Related Materials
NSF Standard 61	Drinking Water System Components - Health Effects

*Note: Latest revision of each standard applies.

Short Specification:

Pipe and fittings shall be manufactured from PVC compound with a cell class of 12454 per ASTM D 1784 and conform with NSF International Standards 14 and 61. Pipe shall be iron pipe size (IPS) conforming to ASTM D 1785. Fittings shall conform to ASTM D 2466.

All pipe and fittings shall be produced by a single manufacturer and shall be installed in accordance with manufacturer's recommendations and applicable code requirements. Buried pipe shall be installed in accordance with ASTM F 1668 and ASTM D 2774. Solvent cements shall conform to ASTM D 2564, primer shall conform to ASTM F 656. The system is to be manufactured by Charlotte Pipe and Foundry Company and is intended for pressure applications where the temperature will not exceed 140°F.

Product Certification



This is to certify that all Plastic Pipe and Fittings manufactured by Charlotte Pipe and Foundry Company are manufactured in the United States and conform to the following standards:

PVC SCH. 40 SOLID WALL PIPE

ASTM D 1784, ASTM D 1785, ASTM D 2665
FHA UM 79a
FEDERAL SPECIFICATION L-P-320a
NSF STANDARD 14 AND 61

PVC SCH. 40 DWV CELLULAR CORE PIPE

ASTM D 4396, ASTM F 891
NSF STANDARD NO. 14

RePVC® SCH. 40 DWV PIPE WITH RECYCLED CONTENT

ASTM D 4396, ASTM F 1760
NSF STANDARD NO. 14

PVC SCH. 40 DWV FITTINGS

ASTM D 1784, ASTM D 2665, ASTM D 3311,
ASTM F1866
FHA UM 79a
FEDERAL SPECIFICATION L-P-320a
NSF STANDARD NO. 14

PVC SDR-21 AND SDR-26 PRESSURE PIPE

ASTM D 1784, ASTM D 2241
NSF STANDARD NO. 14 AND 61

PVC SCH. 40 PRESSURE FITTINGS

ASTM D 1784, ASTM D 2466
NSF STANDARD 14 AND 61

PVC SCH. 40 WELL CASING PIPE

ASTM D 1784, ASTM F 480
NSF STANDARD NO. 14 AND 61

PVC SCH. 80 PIPE

ASTM D 1784, ASTM D 1785
NSF STANDARD NO. 14 AND 61

PVC SCH. 80 FITTINGS

ASTM D 1784, ASTM D 2467
ASTM D 2464 ASTM F 1970
NSF STANDARD NO. 14 AND 61

PVC SDR 35 SEWER MAIN PIPE

ASTM D 1784, ASTM D 3034, SDR 35
ASTM D 3212, ASTM F 477

PVC SEWER AND DRAIN PIPE

ASTM D 1784, ASTM D 2729

PVC THIN WALL PIPE & FITTINGS

ASTM D 1784, ASTM D 2949
NSF STANDARD NO. 14

CPVC FLOWGUARD GOLD® CTS PIPE & FITTINGS

ASTM D 1784, ASTM D 2846
FHA UM-61a
NSF STANDARD NO. 14 AND 61
CSA LISTED ON SPECIFIED ITEMS

CPVC REUZE® CTS PIPE & FITTINGS

ASTM D 1784, ASTM D 2846
NSF STANDARD NO. 14

CPVC CHEMDRAIN® SCH. 40 PIPE & FITTINGS

ASTM D 1784, ASTM F 2618
NSF STANDARD 14

ABS SCH. 40 DWV CELLULAR CORE PIPE

ASTM D 3965, ASTM F 628
NSF STANDARD NO. 14
cNSF® us-dwv

ABS PLUS® SCH. 40 DWV CELLULAR CORE PIPE

ASTM D 3965, ASTM D 4396, ASTM F 1488

ABS SCH. 40 DWV FITTINGS

ASTM D 3965, ASTM D 2661, ASTM D 3311
FHA UM 79a
FEDERAL SPECIFICATION L-P-322b
NSF STANDARD NO. 14

CHARLOTTE PIPE AND FOUNDRY COMPANY



Pipe Reference Guide



Product	Sizes Available																		
	1/4	3/8	1/2	3/4	1	1 1/4	1 1/2	2	2 1/2	3	4	5	6	8	10	12	14	15	16
ChemDrain® CPVC Schedule 40 ★							●	●		●	●		●	●					
FlowGuard Gold® CPVC CTS SDR 11			●	●	●	●	●	●											
ReUze® CPVC CTS SDR 11			●	●	●		●	●											
PVC Schedule 80	●	●	●	●	●	●	●	●	●	●	●		●	●	●	●	●		●
PVC Schedule 40			●	●	●	●	●	●	●	●	●	●	●	●	●	●	●		●
PVC Schedule 40 DWV ★						●	●	●		●	●	●	●	●	●	●	●		●
RePVC® Schedule 40 DWV with Recycled Content ★							●	●		●	●		●	●					
PVC Schedule 30 ★										●									
PVC DWV Foam Core ★							●	●		●	●		●	●	●	●			
PVC Well Casing								●	●	●	●		●	●					
PVC SDR 13.5 (PR315)			●																
PVC SDR 21 (PR200)				●	●	●	●	●											
PVC SDR 26 (PR160)						●	●	●		●									
PVC SDR 35 Sewer Main Belled-End ★†											●		●						
PVC SDR 35 Sewer Main Gasketed ★†											●		●	●					
PVC D 2729 Sewer and Drain ★†										●	●								
ABS DWV Foam Core ★							●	●		●	●		●						
ABS Plus® Foam Core DWV★							●	●		●	●								

★ Non-Pressure
† Not NSF Listed

You can't beat the system.®

Notes:

1. End treatments are Plain and Belled. Consult factory for availability.
2. Lengths are 10 and 20 feet (14 and 20 feet for Gasketed Sewer Main). Consult factory for availability and non-standard lengths.
3. PVC Schedule 40 Bell End and PVC Well Casing pipe lengths for sizes 4", 6", and 8" are 20 feet plus the bell (20 foot laying length).
4. PVC SDR 35 Sewer Main Pipe in 14 foot lengths are 14 feet plus the bell (14 foot laying length).

ABS Plus, ReUze, RePVC, ChemDrain and "You can't beat the system" are registered trademarks of Charlotte Pipe and Foundry Company.
FlowGuard Gold is a registered trademark of Lubrizol Corp.

PVC Pipe: Schedule 40



>> PVC Schedule 40 Pipe - Plain End

PVC SCHEDULE 40 (WHITE)		PLAIN END		PVC 1120	ASTM D 1785	
PART NO.	NOM. SIZE	UPC # 611942-	AVG. OD (IN.)	MIN. WALL (IN.)	MAX WORK PRESSURE AT 23° C OR 73° F	WT. PER 100 FT. (LBS.)
PVC 4005	1/2" x 10'	06658	.840	.109	600 PSI	15.9
PVC 4005	1/2" x 20'	03922	.840	.109	600 PSI	15.9
PVC 4007	3/4" x 10'	06661	1.050	.113	480 PSI	21.1
PVC 4007	3/4" x 20'	03925	1.050	.113	480 PSI	21.1
PVC 4010	1" x 10'	06664	1.315	.133	450 PSI	31.3
PVC 4010	1" x 20'	03928	1.315	.133	450 PSI	31.3
PVC 7100*	1 1/4" x 10'	03945	1.660	.140	370 PSI	42.4
PVC 7100*	1 1/4" x 20'	03946	1.660	.140	370 PSI	42.4
PVC 7112*	1 1/2" x 10'	03947	1.900	.145	330 PSI	50.7
PVC 7112*	1 1/2" x 20'	03948	1.900	.145	330 PSI	50.7
PVC 7200*	2" x 10'	03949	2.375	.154	280 PSI	68.1
PVC 7200*	2" x 20'	03950	2.375	.154	280 PSI	68.1
PVC 4025†	2 1/2" x 20'	04205	2.875	.203	300 PSI	108.0
PVC 7300*	3" x 10'	03951	3.500	.216	260 PSI	141.2
PVC 7300*	3" x 20'	03952	3.500	.216	260 PSI	141.2
PVC 7400†	4" x 10'	03953	4.500	.237	220 PSI	201.2
PVC 7400†	4" x 20'	03954	4.500	.237	220 PSI	201.2
PVC 7500†	5" x 20'	04837	5.563	.258	190 PSI	272.5
PVC 7600†	6" x 10'	03955	6.625	.280	180 PSI	353.7
PVC 7600†	6" x 20'	03956	6.625	.280	180 PSI	353.7
PVC 7800†	8" x 10'	13087	8.625	.322	160 PSI	532.3
PVC 7800†	8" x 20'	03958	8.625	.322	160 PSI	532.3
PVC 7910†	10" x 20'	03959	10.750	.365	140 PSI	754.7
PVC 7912†	12" x 20'	03961	12.750	.406	130 PSI	997.9
PVC 7914†	14" x 20'	04862	14.000	.437	130 PSI	1180.1
PVC 7916†	16" x 20'	04918	16.000	.500	130 PSI	1543.1

* Dual Marked ASTM D 1785 and ASTM D 2665.

† Triple Marked ASTM D 1785 & ASTM D 2665 & ASTM F 480.

‡ Dual Marked ASTM D 1785 & ASTM F 480.

NOTE: When ordering, please specify plain end or bell end.

NSF Listed. Meets All Requirements of ASTM D 1784 and ASTM D 1785.

! WARNING

Testing with or use of compressed air or gas in PVC / ABS / CPVC pipe or fittings can result in explosive failures and cause severe injury or death.

AIR/GAS



- NEVER test with or transport/store compressed air or gas in PVC / ABS / CPVC pipe or fittings.
- NEVER test PVC / ABS / CPVC pipe or fittings with compressed air or gas, or air over water boosters.
- ONLY use PVC / ABS / CPVC pipe for water or approved chemicals.
- Refer to warnings in PPFA User Bulletin 4-80 and ASTM D 1785.

SUBMITTAL FOR CHARLOTTE PIPE® PVC SCHEDULE 40 PRESSURE PIPE AND FITTING SYSTEM

Date: _____

Job Name: _____

Location: _____

Engineer: _____

Contractor: _____

► Scope:

This specification covers PVC Schedule 40 pipe and fittings for pressure applications. This system is intended for pressure applications where the operating temperature will not exceed 140° F.

► Specification:

Pipe and fittings shall be manufactured from virgin rigid PVC (polyvinyl chloride) vinyl compounds with a cell class of 12454 as identified in ASTM D 1784.

PVC Schedule 40 pipe shall be Iron Pipe Size (IPS) conforming to ASTM D 1785. Injection molded PVC Schedule 40 fittings shall conform to ASTM D 2466. Pipe and fittings shall be manufactured as a system and be the product of one manufacturer. All pipe and fittings shall be manufactured in the United States. Pipe and fittings shall conform to NSF International Standard 61 and the health-effects portion of NSF Standard 14.

► Installation:

Installation shall comply with the latest installation instructions published by Charlotte Pipe and Foundry and shall conform to all applicable plumbing, fire, and building code requirements. Buried pipe shall be installed in accordance with ASTM F 1668. Solvent cement joints shall be made in a two-step process with primer conforming to ASTM F 656 and solvent cement conforming to ASTM D 2564. The system shall be protected from chemical agents, fire-stopping materials, thread sealant, plasticized-vinyl products or other aggressive chemical agents not compatible with PVC compounds. The system shall be hydrostatically tested after installation. **WARNING!** Never test with or transport/store compressed air or gas in PVC pipe or fittings. Doing so can result in explosive failures and cause severe injury or death.

► Referenced Standards:

ASTM D 1784: Rigid Vinyl Compounds

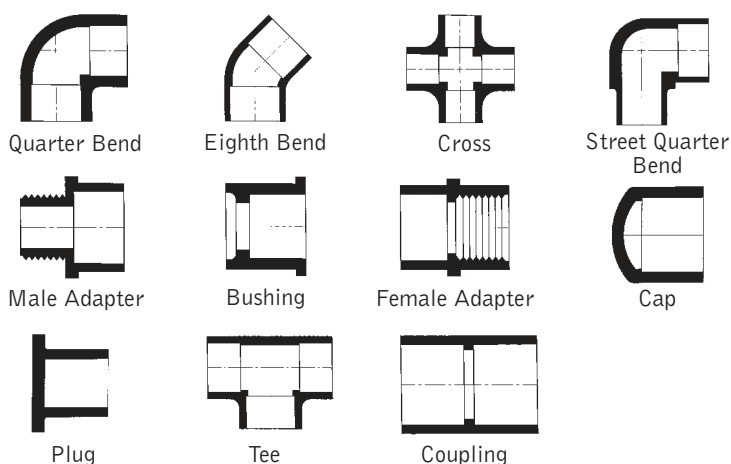
ASTM D 1785: PVC Plastic Pipe, Schedule 40

ASTM D 2466: PVC Plastic Fittings, Schedule 40

 ASTM D 2564: Solvent Cements for PVC
Pipe and Fittings

ASTM F 1668: Procedures for Buried Plastic Pipe

NSF Standard 14: Plastic Piping Components & Related Materials

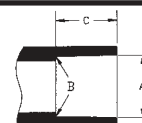
 NSF Standard 61: Drinking Water System Components –
Health Effects


*Not all fitting
patterns shown*

PIPE REFERENCE GUIDE

Product	Sizes Available															
	1/2	3/4	1	1 1/4	1 1/2	2	2 1/2	3	4	5	6	8	10	12	14	16
PVC Schedule 40	•	•	•	•	•	•	•	•	•	•	•	•	•	•	•	•

Schedule 40 Tapered Socket Dimensions



PVC SCHEDULE 40 - ASTM D 2466

Nominal Size	Schedule 80 and Schedule 40 Socket Diameter			Schedule 80 Socket Length C (Minimum)	Schedule 40 Socket Length C (Minimum)
	Entrance A	Bottom B	Tolerance		
1/2	0.848	0.836	±0.004	0.875	0.688
3/4	1.058	1.046	±0.004	1.000	0.719
1	1.325	1.310	±0.005	1.125	0.875
1 1/4	1.670	1.655	±0.005	1.250	0.938
1 1/2	1.912	1.894	±0.006	1.375	1.094
2	2.387	2.369	±0.006	1.500	1.156
2 1/2	2.889	2.868	±0.007	1.750	1.750
3	3.516	3.492	±0.008	1.875	1.875
4	4.518	4.491	±0.009	2.250	2.000
6	6.647	6.614	±0.011	3.000	3.000
8	8.655	8.610	±0.015	4.000	4.000
10	10.780	10.735	±0.015	5.000	5.000
12	12.780	12.735	±0.015	6.000	6.000

Charlotte Pipe and Foundry Company • P.O. Box 35430 Charlotte, NC 28235 • (800) 438-6091 • www.charlottepipe.com

Charlotte Pipe and Charlotte Pipe and Foundry Company are registered trademarks of Charlotte Pipe and Foundry Company.

PVC DWV

 List Price Schedule PVC-112
 Effective January 16, 2012
 Supersedes Price Schedule PVC-1011

Possession of this price list shall not be construed as an offer to sell the products listed.
 Charlotte Pipe and "You can't beat the system" are registered trademarks of Charlotte Pipe and Foundry Company.
 © 1967-2012 Charlotte Pipe and Foundry Company.


 ASTM D 2665 &
 ASTM F 1866

>> PVC Drain-Waste-Vent Fittings

For Non-Pressure Applications

Size	UPC# 611942-	No. Per Carton	No. Per Pallet	List Price Each	Size	UPC# 611942-	No. Per Carton	No. Per Pallet	List Price Each
------	-----------------	-------------------	-------------------	--------------------	------	-----------------	-------------------	-------------------	--------------------



**Part No. PVC 100
Coupling**
(H x H)

1¼	03188	100	8000	\$8.32
1½	03189	100	5600	1.88
2	03190	100	4900	2.45
3	03191	60	1080	8.43
4	03192	25	700	14.94
6	03193	15	180	48.67
8	03194	6	72	107.19
10	03195	24/half crate	36/crate	*
12	03196	12/half crate	24/crate	*
14 ^(F)	12190	6/half crate	12/crate	*
16 ^(F)	12191	4/half crate	8/crate	*



**Part No. PVC 101
Female Adapter**
(FPT x H)

1¼	03197	100	8000	\$17.81
1½	03198	100	5600	3.50
2	03199	100	4900	5.96
3	03200	30	1470	16.03
4	03201	10	560	20.55
6	03202	10	180	69.02
8	11342	6	72	194.46
10 ^(F)	12192	30/half crate	60/crate	*
12 ^(F)	12193	12/half crate	24/crate	*



**Part No. PVC 101X
Female Adapter with Cleanout Plug**
(H)

8**	12269	5	80	\$299.26
10 ^(F)	12267	30/half crate	60/crate	* N
12 ^(F)	12268	12/half crate	24/crate	* N

Note: Shading indicates new part.



**Part No. PVC 102
Pipe Increaser-Reducer**
(H x H)

1½x2	03203	25	3600	\$5.45
1½x3	03204	25	1400	16.57
2x3	03205	20	1600	12.73
2x4	03206	10	800	25.26
3x4	03207	20	1120	26.86
3x6	11073	5	140	117.36
4x6	11074	5	140	108.59
4x8	11343	2	70	192.91
4x10**	11344	36/half crate	72/crate	*
4x12**	12184	27/half crate	45/crate	*
4x14 ^(F)	12199	6/half crate	12/crate	* N
4x16 ^(F)	12178	4/half crate	8/crate	* N
6x8	11123	2	70	158.74
6x12**	11345	27/half crate	45/crate	*
6x14 ^(F)	12195	5/half crate	10/crate	* N
6x16 ^(F)	12198	4/half crate	8/crate	* N
8x10	10012	36/half crate	72/crate	*
8x12	10014	27/half crate	45/crate	*
8x14 ^(F)	12175	5/half crate	10/crate	*
8x16 ^(F)	12179	4/half crate	8/crate	*
10x12	10015	27/half crate	45/crate	*
10x14 ^(F)	12176	3/half crate	5/crate	* N
10x16 ^(F)	12177	4/half crate	8/crate	* N
12x14 ^(F)	12194	4/half crate	8/crate	*
12x16 ^(F)	12196	2/half crate	4/crate	*
14x16 ^(F)	12197	2/half crate	4/crate	*

^(F) Fabricated

* For pricing of this item, please see current PVC Large-Diameter DWV fitting list price schedule.

** Assembled from two molded components

Note: N = non-stock item – contact customer service for availability.

You can't beat the system.®

Size	UPC# 611942-	No. Per Carton	No. Per Pallet	List Price Each	Size	UPC# 611942-	No. Per Carton	No. Per Pallet	List Price Each
------	-----------------	-------------------	-------------------	--------------------	------	-----------------	-------------------	-------------------	--------------------



Part No. PVC 103
Trap Adapter - Male
 (SPG x SLIP)

1½x1¼	03208	100	8000	\$6.37
1½	03209	50	7200	6.77
2	03210	25	3600	20.60



Part No. PVC 103P
Trap Adapter - Male
 (SPG x SLIP with Plastic Nut)

1½x1¼	03211	75	6000	\$7.64
1½	03212	50	5600	6.93
2	03213	25	3600	27.31



Part No. PVC 103R
Trap Adapter - Male with 1½'' Plastic
Nut and Washers to Fit 1½'' and 1¼''
Traps
 (SPG x SLIP with Plastic Nut)

1½	04139	50	5600	\$7.37
----	-------	----	------	---------------



Part No. PVC 103X
Trap Adapter - Male
 (SPG x SLIP with Chrome Nut)

1½x1¼	03214	100	8000	\$9.77
1½	03215	50	5600	9.73
2	03216	25	3600	34.98



Part No. PVC 104
Trap Adapter - Female
 (H x SLIP)

1½x1¼	03220	50	5600	\$7.23
1½	03221	50	7200	5.77

Note: Shading indicates new part.

^(F) Fabricated

* For pricing of this item, please see current PVC Large-Diameter DWV fitting list price schedule.



Part No. PVC 104P
Trap Adapter - Female
 (H x SLIP with Plastic Nut)

1½x1¼	03223	50	5600	\$6.93
1½	03224	50	5600	6.64



Part No. PVC 104R
Trap Adapter - Female with 1½'' Plastic
Nut and Washers to Fit 1½'' and 1¼''
Traps
 (H x SLIP with Plastic Nut)

1½	04140	50	5600	\$7.88
----	-------	----	------	---------------



Part No. PVC 104X
Trap Adapter - Female
 (H x SLIP with Chrome Nut)

1¼	03226	50	5600	\$12.04
1½x1¼	03227	50	5600	9.50
1½	03228	50	5600	9.73



Part No. PVC 105
Fitting Cleanout Adapter
 (SPG x FPT)

1½	03233	50	7200	\$4.43
2	03234	50	4000	5.72
3	03235	25	1225	16.12
4	03236	10	560	26.47
6	03237	10	280	77.10
8 ^(F)	12180	5	80	197.86
10 ^(F)	10175	18/half crate	36/crate	*
12 ^(F)	10176	9/half crate	18/crate	*

H = Hub
 SPG = Spigot
 SLIP = Slip
 MPT = Male Pipe Thread
 FPT = Female Pipe Thread

Size	UPC# 611942-	No. Per Carton	No. Per Pallet	List Price Each	Size	UPC# 611942-	No. Per Carton	No. Per Pallet	List Price Each
------	-----------------	-------------------	-------------------	--------------------	------	-----------------	-------------------	-------------------	--------------------



**Part No. PVC 105X
Fitting Cleanout Adapter with Cleanout
Plug
(SPIGOT)**

1½	03239	50	5600	\$7.74
2	03240	50	2800	9.40
3	03241	25	875	22.72
4	03242	10	560	36.18
6	03243	10	180	109.50
8 ^(F)	12181	5	80	321.63
10 ^(F)	10178	18/half crate	36/crate	* N
12 ^(F)	10179	9/half crate	18/crate	* N



**Part No. PVC 106
Cleanout Plug
(MPT)**

1½	03251	50	7200	\$3.32
2	03252	50	7200	3.69
3	03253	25	3600	6.61
4	03254	30	2400	9.73
6	03255	10	800	32.41
8	10162	5	280	164.34
10	12185	150/half crate	300/crate	*
12	12186	76/half crate	152/crate	*

Note: Shading indicates new part.

^(F) Fabricated

* For pricing of this item, please see current PVC Large-Diameter DWV fitting list price schedule.

** Assembled from two molded components

Note: N = non-stock item – contact customer service for availability.



**Part No. PVC 107
Flush Bushing
(SPG x H)**

1½x1¼	03261	100	14400	\$7.33
2x1¼	03262	50	7200	7.50
2x1½	03263	50	7200	3.23
3x1½	03264	30	2400	15.51
3x2	03265	30	2400	8.10
4x2	03266	30	1470	26.97
4x3	03267	30	1470	13.76
6x4	03268	10	490	71.60
8x4	10618	1	112	170.67
8x6	03269	1	144	155.93
10x4**	12187	30/half crate	60/crate	*
10x6**	11346	30/half crate	60/crate	*
10x8	10180	48/half crate	84/crate	*
12x4**	11347	38/half crate	76/crate	*
12x6**	10634	48/half crate	84/crate	*
12x8	10181	36/half crate	54/crate	*
12x10	10182	36/half crate	54/crate	*



**Part No. PVC 107
Concentric Reducer Bushing
(SPG x H)**

14x4 ^(F)	12208	5/half crate	10/crate	* N
14x6 ^(F)	12209	5/half crate	10/crate	* N
14x8 ^(F)	12210	5/half crate	10/crate	* N
14x10 ^(F)	12204	6/half crate	12/crate	*
14x12 ^(F)	12205	6/half crate	12/crate	*
16x4 ^(F)	12212	4/half crate	8/crate	* N
16x6 ^(F)	12206	4/half crate	8/crate	*
16x8 ^(F)	12207	4/half crate	8/crate	*
16x10 ^(F)	12182	4/half crate	8/crate	*
16x12 ^(F)	12183	4/half crate	8/crate	*
16x14 ^(F)	12211	4/half crate	8/crate	* N

Size	UPC# 611942-	No. Per Carton	No. Per Pallet	List Price Each	Size	UPC# 611942-	No. Per Carton	No. Per Pallet	List Price Each
------	-----------------	-------------------	-------------------	--------------------	------	-----------------	-------------------	-------------------	--------------------



Part No. PVC 108
Flush Bushing (Cleanout Adapter)
 (SPG x FPT)

2x1½	03274	50	7200	\$16.74
10x8	10232	48/half crate	84/crate	*
12x8	10233	36/half crate	54/crate	*



Part No. PVC 108X
Flush Bushing (Cleanout Adapter)
with Plug
 (SPG x FPT)

10x8	10234	48/half crate	84/crate	*
12x8	10235	36/half crate	54/crate	*



Part No. PVC 109
Male Adapter
(Will not accept a tail piece)
 Octagon shoulders for tightening purposes.
 (H x MPT)

1¼	03285	50	7200	\$8.90
1¼x1½	03287	25	3600	4.79
1½	03286	50	5600	3.65
2	03288	50	5600	4.73
3	03289	25	1400	13.56
4	03290	25	875	30.05



Part No. PVC 110
Flush Cleanout Plug
 (MPT)

2	03291	25	7200	\$12.11
3	03292	50	7200	14.06
4	03293	25	3600	14.21



Part No. PVC 111
Male Fitting Adapter
 (SPG x MPT)

1½	03298	50	7200	\$14.27
2	03299	25	3600	15.94

Note: Shading indicates new part.



Part No. PVC 115
Adapter Coupling
 (SDR 35 H x DWV H)

8 ^(F)	12270	5	80	\$121.82
10 ^(F)	12271	10/half crate	20/crate	*
10x8 ^(F)	12272	10/half crate	20/crate	*
12 ^(F)	12273	10/half crate	20/crate	*



Part No. PVC 116
Cap
 (SOCKET)

1½	03301	10	2880	\$7.48
2	03302	5	1800	12.49
3	03303	10	1440	21.60
4	03304	5	560	30.85
6	03305	5	175	77.90
8	10252	3	63	267.24
10	11121	42/half crate	63/crate	*
12	11122	2/box	24/pallet	*
14 ^(F)	12214	24/half crate	48/crate	*
16 ^(F)	12213	14/half crate	28/crate	*



Part No. PVC 117
Adapter Coupling
(Adapts S&D Spigot to DWV Spigot)
 (H x H)

4x3	03307	20	1120	\$25.54
4x4	03308	10	560	28.97



Part No. PVC 118
Adapter Bushing
(Adapts DWV Hub to S&D Spigot)
 (DWV SPIGOT x HUB)

3	03309	25	2800	\$23.89
4	03310	10	1440	11.53

(F) Fabricated
 * For pricing of this item, please see current PVC Large-Diameter DWV fitting list price schedule.

Size	UPC# 611942-	No. Per Carton	No. Per Pallet	List Price Each	Size	UPC# 611942-	No. Per Carton	No. Per Pallet	List Price Each
------	-----------------	-------------------	-------------------	--------------------	------	-----------------	-------------------	-------------------	--------------------



Part No. PVC 300
1/4 Bend
 (H x H)

1 1/4	03354	100	3500	\$13.76
1 1/2	03355	100	2800	3.77
2	03356	50	1400	5.96
3	03357	25	450	17.55
4	03358	10	180	34.59
6	03359	5	80	121.40
8	03360	1	28	221.30
10**	10167	8/half crate	14/crate	*
12**	10168	6/half crate	9/crate	*
14 ^(F)	12218	2/half crate	4/crate	*
16 ^(F)	12219	1/half crate	3/crate	*



Part No. PVC 300A
Vent 1/4 Bend
 (H x H)

8†	12188	2	32	\$175.73
10†	10019	15/half crate	21/crate	*
12†	10025	6/half-crate	12/crate	*



Part No. PVC 300R
1/4 Bend, Reducing
 (H x H)

2x1 1/2	04196	10	1440	\$22.73
---------	-------	----	------	----------------



Part No. PVC 300S
1/4 Bend with Side Inlet
 (H x H)

3x3x1 1/2	03361	10	490	\$48.44
3x3x2	03362	10	350	35.80



Part No. PVC 301
Vent 1/4 Bend, Street
 (H x SPG)

8 ^(F)	12279	2	24	\$184.52
10 ^(F)	12277	4/half crate	8/crate	* N
12 ^(F)	12278	2/half crate	5/crate	* N

Note: Shading indicates new part.



Part No. PVC 302
1/4 Bend, Street
 (SPG x H)

1 1/4	03369	35	3920	\$19.49
1 1/2	03370	100	3500	5.05
2	03371	50	1750	7.69
3	03372	20	560	19.45
4	03373	10	180	36.56
6	03374	5	80	169.12
8	11348	1	28	413.83
10 ^(F)	12220	3/half crate	6/crate	*
12 ^(F)	12221	2/half crate	4/crate	* N
14 ^(F)	12222	-	1/crate	*
16 ^(F)	12223	-	1/crate	*



Part No. PVC 303
1/4 Bend with Low Heel Inlet
 (H x H x H)

3x3x1 1/2	03375	25	400	\$36.66
3x3x2	03376	25	400	31.57
4x4x2	03377	15	180	62.35



Part No. PVC 304
Long Sweep 1/4 Bend
 (H x H)

1 1/2	03378	50	1750	\$9.06
2	03379	25	1225	9.80
3	03380	10	350	23.09
4	03381	5	175	44.10
6	11349	5	60	179.33



Part No. PVC 305
Long Sweep 1/4 Bend
with High Heel Inlet
 (H x H x H)

3x3x2	03383	25	300	\$136.28
-------	-------	----	-----	-----------------

- (F) Fabricated
 † Not a sanitary pattern
 * For pricing of this item, please see current PVC Large-Diameter DWV fitting list price schedule.
 ** Assembled from two molded components

Note: N = non-stock item – contact customer service for availability.

Limited Warranty

Charlotte Pipe and Foundry Company® (Charlotte Pipe®) Products are warranted to be free from manufacturing defects and to conform to currently applicable ASTM standards for a period of five (5) years from date of delivery. Buyer's remedy for breach of this warranty is limited to replacement of, or credit for, the defective product. This warranty excludes any expense for removal or reinstallation of any defective product and any other incidental, consequential, or punitive damages. **This limited warranty is the only warranty made by seller and is expressly in lieu of all other warranties, express and implied, including any warranties of merchantability and fitness for a particular purpose.**

No statement, conduct or description by Charlotte Pipe or its representative, in addition to or beyond this Limited Warranty, shall constitute a warranty. This Limited Warranty may only be modified in writing signed by an officer of Charlotte Pipe.

This Limited Warranty will not apply if:

- 1) The Products are used for purposes other than their intended purpose as defined by local plumbing and building codes, and the applicable ASTM standard.
- 2) The Products are not installed in good and workmanlike manner consistent with normal industry standards; installed in compliance with the latest instructions published by Charlotte Pipe and good plumbing practices; and installed in conformance with all applicable plumbing, fire and building code requirements.
- 3) This limited warranty does not apply when the products of Charlotte Pipe are used with the products of other manufacturers that do not meet the applicable ASTM or CISPI standards or that are not marked in a manner to indicate the entity that manufactured them.
- 4) The Products fail due to defects or deficiencies in design, engineering, or installation of the piping system of which they are a part.
- 5) The Products have been the subject of modification; misuse; misapplication; improper maintenance or repair; damage caused by the fault or negligence of anyone other than Charlotte Pipe; or any other act or event beyond the control of Charlotte Pipe.

All Charlotte Pipe and Foundry Company Products are made in U.S.A.



Charlotte, Charlotte Pipe and "You can't beat the system" are registered trademarks of Charlotte Pipe and Foundry Company.

- 6) The Products fail due to the freezing of water in the Products.
- 7) The Products fail due to contact with chemical agents, fire stopping materials, thread sealant, plasticized vinyl products, or other aggressive chemical agents that are not compatible.
- 8) Pipe outlets, sound attenuation systems or other devices are permanently attached to the surface of Charlotte® PVC, ABS or CPVC products with solvent cement or adhesive glue.


Charlotte Pipe products are manufactured to the applicable ASTM or CISPI standard. Charlotte Pipe and Foundry **cannot** accept responsibility for the performance, dimensional accuracy, or compatibility of pipe, fittings, gaskets, or couplings not manufactured or sold by Charlotte Pipe and Foundry.

Any Charlotte Pipe products alleged to be defective **must** be made available to Charlotte Pipe at the following address for verification, inspection and determination of cause:

Charlotte Pipe and Foundry Company
Attention: Technical Services
2109 Randolph Road
Charlotte, North Carolina 28207

Purchaser must obtain a return materials authorization and instructions for return shipment to Charlotte Pipe of any product claimed defective or shipped in error. Any Charlotte Pipe product **proved** to be defective in manufacture will be replaced F.O.B. point of original delivery, or credit will be issued, at the discretion of Charlotte Pipe.


4/15/10



WARNING

Testing with or use of compressed air or gas in PVC / ABS / CPVC pipe or fittings can result in explosive failures and cause severe injury or death.

- NEVER test with or transport/store compressed air or gas in PVC / ABS / CPVC pipe or fittings.
- NEVER test PVC / ABS / CPVC pipe or fittings with compressed air or gas, or air over water boosters.
- ONLY use PVC / ABS / CPVC pipe for water or approved chemicals.
- Refer to warnings in PPFA User Bulletin 4-80 and ASTM D 1785.



You can't beat the system.®

Flanged Fittings and Flanges

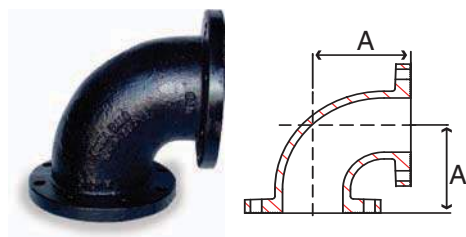
Flanged Fittings Class 125 & 250 Specifications

- Flanged fittings UL Listed through 12"
- Grey iron castings conform to ASTM A126 and ASTM A48
- Flanged fitting dimensions conform to ASME B16.1 and ANSI/AWWA C110/A21.10
- Manufacturing facility is ISO 9001:2008
- Flanged fittings made of 150# ductile iron for sizes 6" and below
- Galvanizing available upon request

Class 125 & 250 Cast Flanges Specifications

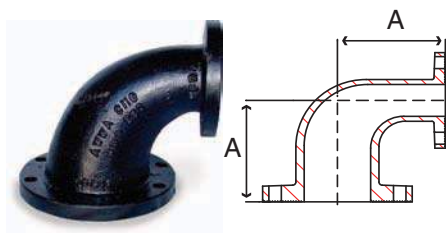
- Grey iron castings conform to ASTM A126 and ASTM A48
- Companion flange dimensions conform to ASME B16.1
- Hot-dipped galvanized flanges conform to ASTM A153
- Companion flanges threads conform to ASME B1.20.1
- Manufacturing facility is ISO 9001:2008

Fig. 38E 1 – 90° Elbow



Size IN	Part Number	Materials	A IN	Weight LB
1-1/4	38E 1012D	150 lb. Ductile Iron	3.75	9
1-1/2	38E 1014D	150 lb. Ductile Iron	4.00	9
2	38E 1020D	150 lb. Ductile Iron	4.50	14
2-1/2	38E 1024D	150 lb. Ductile Iron	5.00	19
3	38E 1030D	150 lb. Ductile Iron	5.50	25
3-1/2	38E 1034D	150 lb. Ductile Iron	6.00	25
4	38E 1040D	150 lb. Ductile Iron	6.50	45
5	38E 1050D	150 lb. Ductile Iron	7.50	52
6	38E 1060D	150 lb. Ductile Iron	8.00	65
8	38E 1080	125 lb. Cast Iron	9.00	105
10	38E 1100	125 lb. Cast Iron	11.00	165
12	38E 1120	125 lb. Cast Iron	12.00	255
14	38E 1140	125 lb. Cast Iron	14.00	353
16	38E 1160	125 lb. Cast Iron	15.00	430
18	38E 1180	125 lb. Cast Iron	16.50	450
20	38E 1200	125 lb. Cast Iron	18.00	580
24	38E 1240	125 lb. Cast Iron	22.00	900

Fig. 38RE1 – 90° Reducing Elbow



Size IN	Part Number	Materials	A IN	Weight LB
2 x 1-1/2	38RE1020014D	150 lb. Ductile Iron	4.50	22
3 x 1-1/2	38RE1030014D	150 lb. Ductile Iron	5.50	22
3 x 2	38RE1030020D	150 lb. Ductile Iron	5.50	22
3 x 2-1/2	38RE1030024D	150 lb. Ductile Iron	5.50	22
4 x 2	38RE1040020D	150 lb. Ductile Iron	6.50	29
4 x 2-1/2	38RE1040024D	150 lb. Ductile Iron	6.50	31
4 x 3	38RE1040030D	150 lb. Ductile Iron	6.50	29
5 x 2	38RE1050020D	150 lb. Ductile Iron	7.50	50
5 x 2-1/2	38RE1050024D	150 lb. Ductile Iron	7.50	50
5 x 4	38RE1050040D	150 lb. Ductile Iron	7.50	50
6 x 2	38RE1060020D	150 lb. Ductile Iron	8.00	42
6 x 2-1/2	38RE1060024D	150 lb. Ductile Iron	8.00	45
6 x 3	38RE1060030D	150 lb. Ductile Iron	8.00	50
6 x 4	38RE1060040D	150 lb. Ductile Iron	8.00	55
6 x 5	38RE1060050D	150 lb. Ductile Iron	8.00	65
8 x 4	38RE1080040	125 lb. Cast Iron	9.00	80
8 x 5	38RE1080050	125 lb. Cast Iron	9.00	85
8 x 6	38RE1080060	125 lb. Cast Iron	9.00	85
10 x 4	38RE1100040	125 lb. Cast Iron	11.00	110
10 x 6	38RE1100060	125 lb. Cast Iron	11.00	130
10 x 8	38RE1100080	125 lb. Cast Iron	11.00	150
12 x 6	38RE1120060	125 lb. Cast Iron	12.00	188
12 x 8	38RE1120080	125 lb. Cast Iron	12.00	185
12 x 10	38RE1120100	125 lb. Cast Iron	12.00	210
14 x 12	38RE1140120	125 lb. Cast Iron	14.00	275
16 x 12	38RE1160120	125 lb. Cast Iron	15.00	310

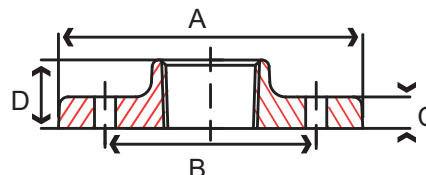


Fig. 17HF1 – 125 lb. Threaded Hydrant Flange

Size IN	Part Number Black	A IN	B IN	C IN	D IN	Bolt Hole Size	Number of Bolt Holes	Weight LB
6	17HF1060	11.00	9.50	1.00	1.56	7/8	6	16

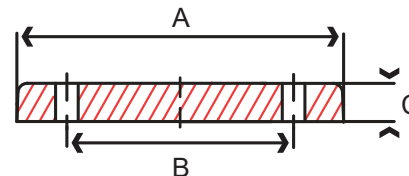


Fig. 17HB1 – 125 lb. Blind Hydrant Flange

Size IN	Part Number Black	A IN	B IN	C IN	Bolt Hole Size	Number of Bolt Holes	Weight LB
6	17HB1060	11.00	9.50	1.00	7/8	6	26

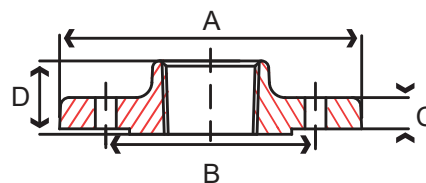


Fig. 17TH2 & 18TH2 – 250 lb. Threaded Companion Flange

Size IN	Part Number		A IN	B IN	C IN	D IN	Bolt Hole Size	Number of Bolt Holes	Weight LB
	Black	Galvanized							
2	17TH2020	18TH2020	6.50	5.00	0.88	1.25	3/4	8	7
2-1/2	17TH2024	18TH2024	7.50	5.88	1.00	1.43	5/8	8	10
3	17TH2030	18TH2030	8.25	6.62	1.12	1.56	5/8	8	14
4	17TH2040	18TH2040	10.00	7.88	1.25	1.75	5/8	8	24
6	17TH2060	-	12.50	10.60	1.44	1.94	5/8	12	39
8	17TH2080	-	15.00	13.00	1.62	2.19	1	12	58

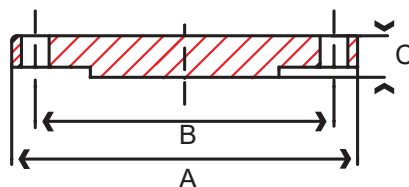


Fig. 17BL2 – 250 lb. Blind Flange

Size IN	Part Number Black	A IN	B IN	C IN	Bolt Hole Size	Number of Bolt Holes	Weight LB
2	17BL2020	6.50	5.00	0.88	3/4	8	8
2-1/2	17BL2024	7.50	5.88	1.00	7/8	8	12
3	17BL2030	8.25	6.62	1.12	7/8	8	16
4	17BL2040	10.00	7.88	1.25	7/8	8	27
5	17BL2050	11.00	9.25	1.38	7/8	8	35
6	17BL2060	12.50	10.60	1.44	7/8	12	50
8	17BL2080	15.00	13.00	1.62	1	12	81
10	17BL2100	17.50	15.25	1.88	1-1/8	16	115

All 250 lb. Flanges have 1/16 raised face



TM

Kuriyama of America, Inc.

360 E. State Parkway
Schaumburg, IL 60173-5335 USA

Phone: (847) 755-0360

Toll-Free FAX: (800) 800-0320

International FAX: (847) 885-0996 **Email:** sales@kuriyama.com

Tiger™ Green TG™ Series EPDM Suction Hose**1**

<u>Series</u>	<u>ID</u>	<u>OD</u>	<u>Working Pressure at 68°F</u>	<u>Working Pressure at 104°F</u>	<u>Vacuum Rating at 68°F</u>	<u>Vacuum Rating at 104°F</u>	<u>Approx. Bending Radius at 68°F</u>	<u>Standard Length</u>	<u>Weight</u>
<u>TG100X100</u>	1 in 25.4 mm	1.40 in 35.5 mm	65 psi	45 psi	Full	28 inHg	2 in	100 ft	0.28 lbs/ft
<u>TG125X100</u>	1 1/4 in 31.8 mm	1.63 in 41.4 mm	60 psi	40 psi	Full	28 inHg	3 in	100 ft	0.33 lbs/ft
<u>TG150X100</u>	1 1/2 in 38.1 mm	1.93 in 49.0 mm	50 psi	35 psi	Full	28 inHg	3 in	100 ft	0.44 lbs/ft
<u>TG200X100</u>	2 in 50.8 mm	2.51 in 63.8 mm	50 psi	35 psi	Full	28 inHg	5 in	100 ft	0.67 lbs/ft

<u>Series</u>	<u>ID</u>	<u>OD</u>	<u>Working Pressure at 68°F</u>	<u>Working Pressure at 104°F</u>	<u>Vacuum Rating at 68°F</u>	<u>Vacuum Rating at 104°F</u>	<u>Approx. Bending Radius at 68°F</u>	<u>Standard Length</u>	<u>Weight</u>
<u>TG250X100</u>	2 1/2 in 63.5 mm	3.07 in 78.0 mm	45 psi	30 psi	Full	28 inHg	5.5 in	100 ft	0.95 lbs/ft
<u>TG300X100</u>	3 in 76.2 mm	3.60 in 91.5 mm	45 psi	30 psi	Full	26 inHg	7 in	100 ft	1.14 lbs/ft
<u>TG400X100</u>	4 in 101.6 mm	4.70 in 119.5 mm	40 psi	25 psi	Full	26 inHg	11.5 in	100 ft	1.84 lbs/ft
<u>TG600X100</u>	6 in 152.4 mm	6.85 in 174.0 mm	30 psi	20 psi	28 inHg	24 inHg	20.00 in	100 ft	3.07 lbs/ft
<u>TG600X20</u>	6 in 152.4 mm	6.85 in 174.0 mm	30 psi	20 psi	28 inHg	24 inHg	20.00 in	20 ft	3.07 lbs/ft

King Nipple

Connection: MNPT x Hose

Bevel x Hose

Material:

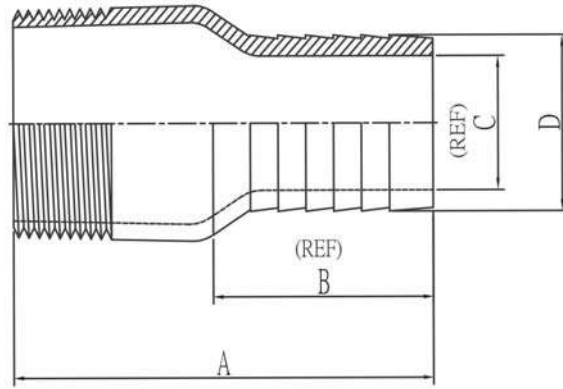
Stainless Steel - FNWKNSB, FNWKNST

Unplated Carbon Steel - FNWKNUT, FNWKNUB

Zinc Plated Carbon Steel - FNWKNPT ←

B designates beveled, T designates threaded.

Combination nipples are not recommended for steam.



Dimensions (inches)

Product Code	Size	A	B	C	D
FNWKNSTD	1/2"	2.76	1.42	0.30	0.54
FNWKNSTF	3/4"	3.03	1.46	0.55	0.78
FNWKNSTG	1"	3.19	1.46	0.77	1.02
FNWKNSTH *	1-1/4"	3.46	1.57	1.01	1.27
FNWKNSTBJ * / FNWKNSTJ *	1-1/2"	4.13	2.09	1.14	1.54
FNWKNSTBK * / FNWKNSTK *	2"	4.69	2.36	1.74	2.03
FNWKNSTL *	2-1/2"	5.55	2.80	2.11	2.52
FNWKNSTBM * / FNWKNSTM *	3"	5.98	3.15	2.67	3.03
FNWKNSTBP * / FNWKNSTP *	4"	7.17	3.70	3.64	4.04
FNWKNSTU *	6"	10.08	5.94	5.63	6.04

Product Code	Size	A	B	C	D
FNWKNUTD	1/2"	2.76	1.42	0.30	0.54
FNWKNUTF	3/4"	3.03	1.46	0.55	0.78
FNWKNUTG	1"	3.19	1.46	0.77	1.02
FNWKNUTH *	1-1/4"	3.46	1.57	1.01	1.27
FNWKNUTJ *	1-1/2"	4.13	2.09	1.14	1.54
FNWKNUTK * / FNWKNUBK *	2"	4.69	2.36	1.74	2.03
FNWKNUTL *	2-1/2"	5.55	2.80	2.11	2.52
FNWKNUTM * / FNWKNUBM *	3"	5.98	3.15	2.67	3.03
FNWKNUTP * / FNWKNUBP *	4"	7.17	3.70	3.64	4.04
FNWKNUTU *	6"	10.08	5.94	5.63	6.04

Product Code	Size	A	B	C	D
FNWKNPTD	1/2"	2.76	1.42	0.30	0.54
FNWKNPTF	3/4"	3.03	1.46	0.55	0.78
FNWKNPTG	1"	3.19	1.46	0.77	1.02
FNWKNPTH *	1-1/4"	3.46	1.57	1.01	1.27
FNWKNPTJ *	1-1/2"	4.13	2.09	1.14	1.54
FNWKNPTK *	2"	4.69	2.36	1.74	2.03
FNWKNPTL *	2-1/2"	5.55	2.80	2.11	2.52
FNWKNPTM *	3"	5.98	3.15	2.67	3.03
FNWKNPTP *	4"	7.17	3.70	3.64	4.04
FNWKNPTU *	6"	10.08	5.94	5.63	6.04

Recommended for use in low pressure discharge and suction service for compatible liquids. * Size 1-1/4" and above are not recommended for compressible products such as air or nitrogen.

VALVES

For Non-Health Hazard Applications

Job Name _____

Contractor _____

Job Location _____

Approval _____

Engineer _____

Contractor's P.O. No. _____

Approval _____

Representative _____

Series 007

Double Check Valve Assemblies

Sizes: ½" – 3" (15 – 80mm)

Series 007 Double Check Valve Assemblies shall be installed at referenced cross-connections to prevent the backflow of polluted water into the potable water supply. Only those cross-connections identified by local inspection authorities as non-health hazard shall be allowed the use of an approved double check valve assembly.

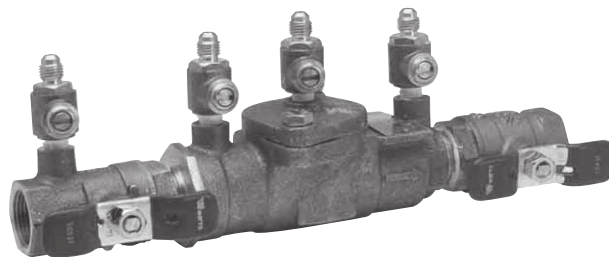
Check with local authority having jurisdiction regarding vertical orientation, frequency of testing or other installation requirements. The valve shall meet the requirements of ASSE Std. 1015 and AWWA Std. C510. Approved by the Foundation for Cross-Connection Control and Hydraulic Research at the University of Southern California.

Features

- Ease of maintenance — only one cover
- Top entry
- Replaceable seats and seat discs
- Modular construction
- Compact design
- Cast bronze body construction — ½" – 2" (15 – 50mm)
- Fused epoxy coated cast iron body — 2½" – 3" (65 – 80mm)
- Top mounted ball valve test cocks
- Low pressure drop
- No special tools required for servicing
- ½" – 1" (15 – 25mm) have tee handles

Specifications

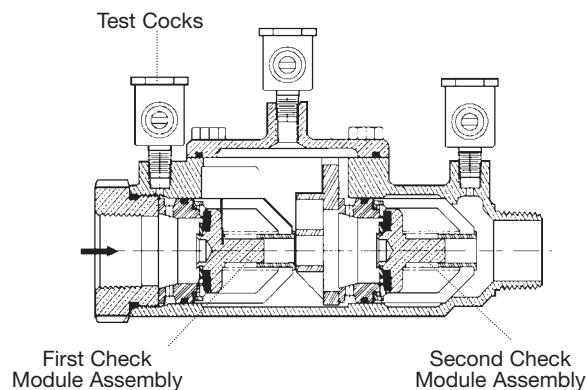
A Double Check Valve Assembly shall be installed at each noted location. The assembly shall consist of two positive seating check modules with captured springs and rubber seat discs. The check module seats and seat discs shall be replaceable. Service of all internal components shall be through a single bronze or stainless steel access cover secured with stainless steel bolts. The assembly shall also include two resilient seated isolation valves; four top mounted, resilient seated test cocks. The assembly shall meet the requirements of ASSE Std. 1015 and AWWA Std. C510. Approved by the Foundation for Cross-Connection Control and Hydraulic Research at the University of Southern California. Assembly shall be a Watts Series 007.



¾" (20mm) 007M3QT



2" (50mm) 007M1QT HC



The 007 Series features a modular design concept which facilitates complete maintenance and assembly by retaining the spring load.

Now Available
WattsBox Insulated Enclosures.

For more information, send for literature ES-WB.

**IMPORTANT: INQUIRE WITH GOVERNING AUTHORITIES
FOR LOCAL INSTALLATION REQUIREMENTS**

Pressure — Temperature

1/2" – 2" (15 – 50mm)

Temperature Range: 33°F – 180°F (0.5°C – 82°C).

Maximum Working Pressure: 175psi (12.1 bar).

2 1/2" – 3" (65 – 80mm)

Temperature Range: 33°F – 110°F (0.5°C – 43°C) continuous,
140°F (60°C) intermittent.

Maximum Working Pressure: 175psi (12.1 bar).

Standards

ASSE Std. 1015, AWWA Std. C510

IAPMO PS31, CSA B64.5

Approvals



† ASSE, AWWA, IAPMO, CSA, UPC

▲ Approved by the Foundation for Cross-Connection Control and Hydraulic Research at the University of Southern California.

- Models LF and S are not listed.
- UL Classified (LF models only) 3/4" – 2" (20 – 50mm) (except 007M3LF)
- UL Classified with OSY gate valves (2 1/2" and 3" horizontal only.)

* Horizontal and vertical "flow up" approval on all sizes

Suffix:

S - bronze strainer

LF - without shutoff valves

LH - locking handle ball valves (open position)

SH - stainless steel ball valve handles

HC - 2 1/2" inlet/outlet fire hydrant fittings (2" valve)

Prefix:

U - Union connections

2 1/2" – 3" (65 – 80mm)

Suffix:

NRS - non-rising stem resilient seated gate valves

OSY - UL/FM outside stem and yoke resilient seated gate valves

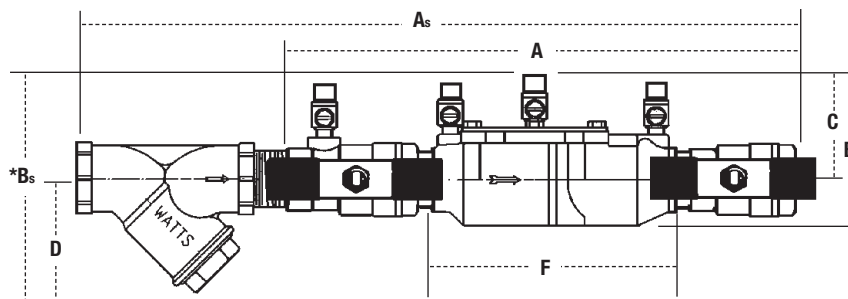
LF - without shutoff valves

QT-FDA - FDA epoxy coated quarter-turn ball valves

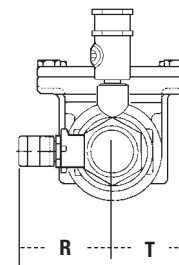
Dimensions – Weights

Models

Sizes: 1/2" – 2" (15 – 50mm)



*Subscript 'S' = strainer model

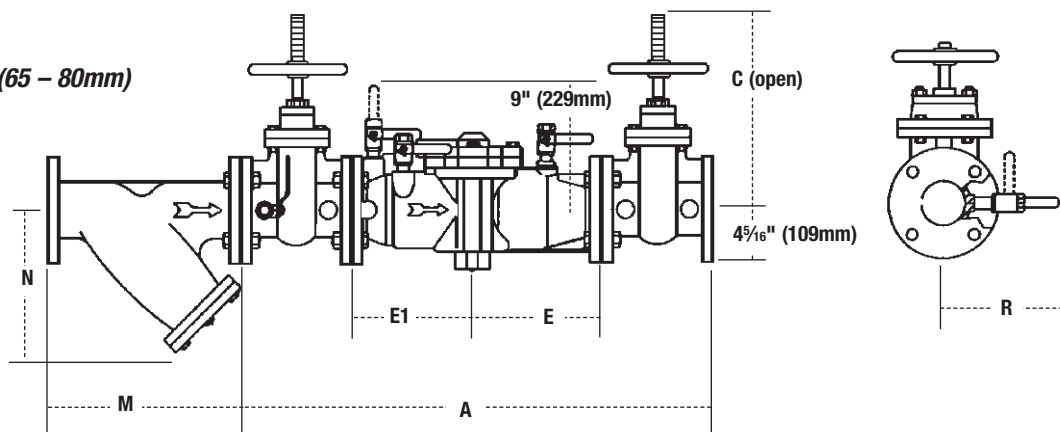


Suffix HC — Fire Hydrant Fittings dimension "A" = 23 1/2" (594mm)

MODEL	SIZE (DN)				DIMENSIONS												WEIGHT							
	in.		mm		A		B		C		D		F		G		R		T		lbs.		kgs.	
†▲ 007QT	½	15	10	254	4⅝	117	2⅞	62	—	—	5	127	3⅝	85	2⅞	59	2¼	52	4.5	2				
†▲ 007M3QT	¾	20	11⅝	282	4	102	3⅝	79	—	—	6⅜	157	3⅞	87	2⅝	54	1⅝	33	5	2.3				
†▲ 007M1QT	1	25	13¼	337	5⅛	130	4	102	—	—	7½	191	3⅝	85	1⅞	43	1⅞	43	12	5.4				
†▲ 007M2QT	1¼	32	16⅜	416	5	127	3⅞	84	—	—	9½	241	5	127	3	76	2	50	15	6.8				
†▲ 007M2QT	1½	40	16¾	425	4⅞	124	3½	89	—	—	9¾	248	5⅞	148	3⅝	79	2⅞	68	15.9	7.2				
†▲ 007M1QT	2	50	19½	495	6¼	159	4	102	—	—	13⅝	340	6⅛	156	3⅞	87	2⅞	68	25.7	11.7				
• 007QT-S	½	15	13	330	6	152	2⅞	62	3	76	5	127	3⅝	85	2⅞	59	2¼	52	5.5	2.5				
• 007M3QT-S	¾	20	14½	368	6⅛	156	3⅝	79	3	76	6⅜	157	3⅞	87	2⅝	54	1⅝	33	6.7	3.1				
• 007M1QT-S	1	25	17⅞	157	7¼	197	4	102	3¼	83	7½	191	3⅝	85	1⅞	43	1⅞	43	14	6.4				
• 007M2QT-S	1¼	32	21½	546	7⅞	179	3⅞	84	3½	83	9½	241	5	127	3	76	2	50	19	8.6				
• 007M2QT-S	1½	40	25⅞	637	7⅞	179	3½	89	3¾	95	9¾	248	5⅞	148	3⅝	79	2⅞	68	19.6	8.9				
• 007M1QT-S	2	50	27¼	692	8¾	222	4	102	4	102	13⅝	340	6⅛	156	3⅞	87	2⅞	68	33.5	15.2				

Dimensions – Weights

Sizes: 2½" – 3" (65 – 80mm)



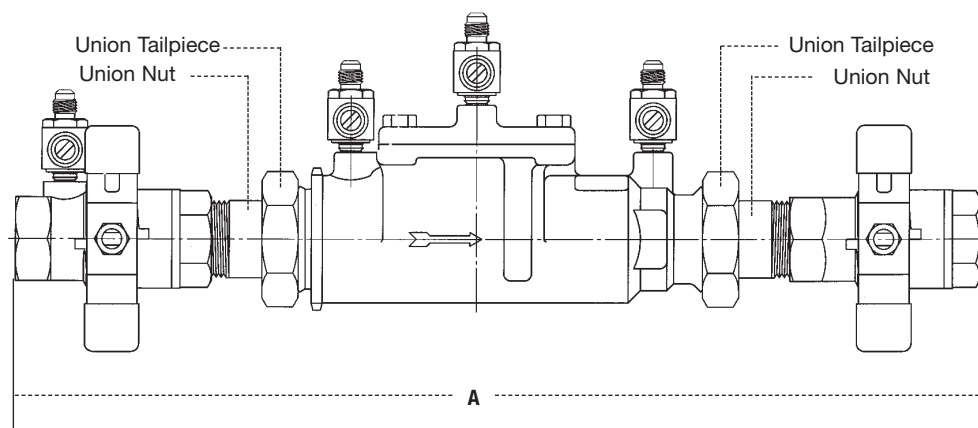
MODEL	SIZE (DN)		DIMENSIONS								WEIGHT	
	in.	mm	A		C		E, E1		R		lbs.	kgs.
007QT-FDA	2½	65	33⅞	841	6⅜	162	9⅛	230	8¾	222	155	70
▲ 007-NRS	2½	65	33⅞	841	9⅞	238	9⅛	230	8¾	222	155	70
▲ ♦ 007-OSY	2½	65	33⅞	841	16⅞	416	9⅛	230	8¾	222	158	72
007-QT-FDA	3	80	34⅞	867	6⅜	162	9⅛	230	8¾	222	155	70
▲ ♦ 007-NRS	3	80	34⅞	867	10¼	260	9⅛	230	8¾	222	185	84
▲ 007-OSY	3	80	34⅞	867	18⅞	479	9⅛	230	8¾	222	185	84

Strainer Dimensions

SIZE				WEIGHT			
in.	mm	M	N	in.	mm	lbs.	kgs.
2½	65	10	254	6½	165	28	13
3*	80	10⅞	267	7	178	34	15

*S Models only

1" U007M1QT



Sizes: ½" – 2" (15 – 50mm)

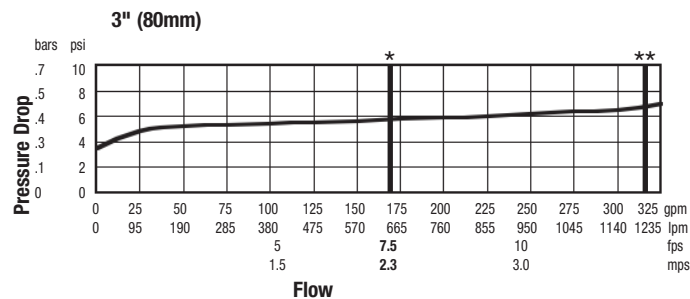
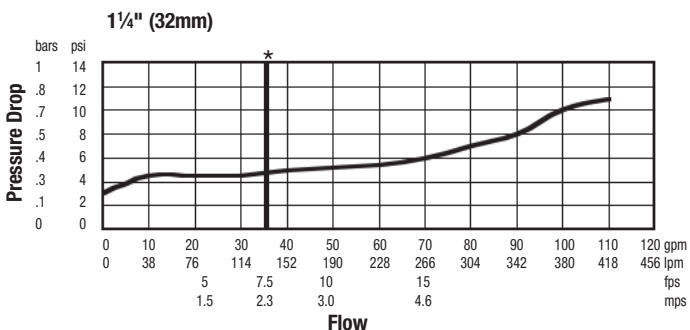
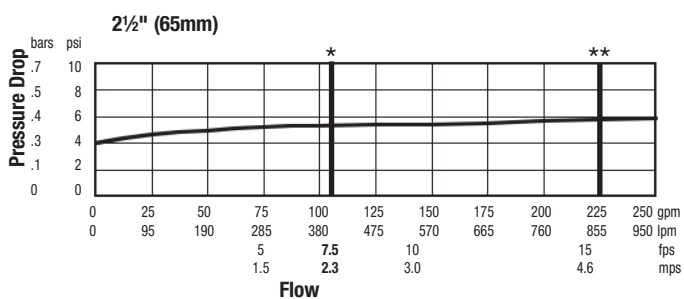
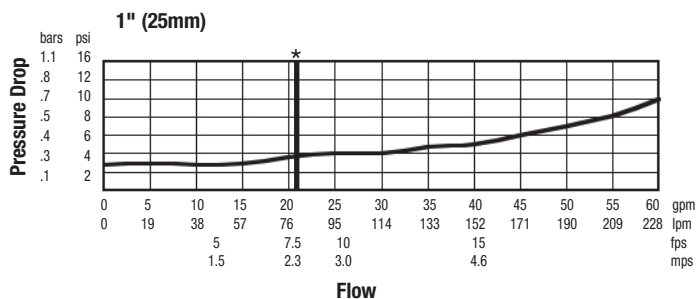
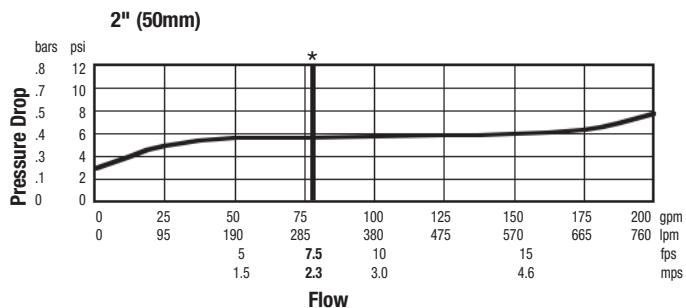
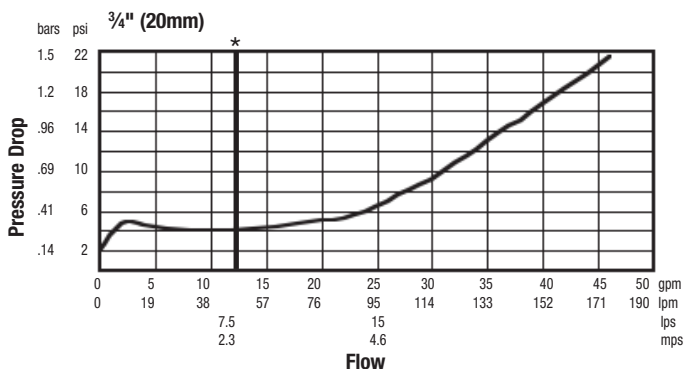
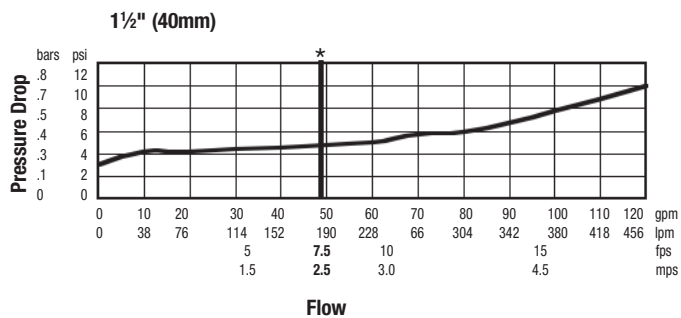
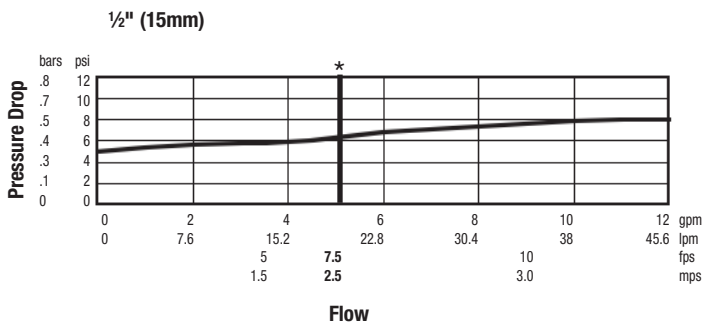
MODEL	SIZE (DN)		DIMENSIONS	
	in.	mm	A	mm
U007QT	½	15	12⅜	326
U007M2QT	¾	20	13⅜	350
U007M2QT	1	25	16⅞	422
U007M2QT	1¼	32	20¾	527
U007M2QT	1½	40	21½	546
U007M1QT	2	50	24½	622

Capacity

As compiled from documented Foundation for Cross-Connection Control and Hydraulic Research at the University of Southern California lab tests.

* Typical maximum system flow rate (7.5 feet/sec., 2.3 meters/sec.)

** UL rated flow



A Watts Water Technologies Company



ISO 9001-2008
CERTIFIED

USA: No. Andover, MA • Tel. (978) 688-1811 • Fax: (978) 794-1848 • www.watts.com
Canada: Burlington, ONT. • (905) 332-4090 • Fax: (905) 332-7068 • www.wattscanada.ca

CONNECTIONS

Female Dry Hydrant



Straight PVC



45 Degree PVC



90 Degree PVC



Adapter (No PVC)

Side 1	Side 2	Straight PVC	45 Degree PVC	90 Degree PVC	Adapter (No PVC)
4 1/2"	6" PVC	DHF45600	DHF45645	DHF45690	
5"	6" PVC	DHF5600	DHF5645	DHF5690	
6"	6" PVC	DHF6600	DHF6645	DHF6690	
4 1/2"	6" NPSH				DHF456P
5"	6" NPSH				DHF56P
6"	6" NPSH				DHF66P

Includes

- Plug
- Screen
- Chain
- Swivel Female

Features

- Color - Red
- 6" Schedule 40 PVC pipe
- Light-weight 6061-T6 Aluminum Alloy
- Meet or Exceed NFPA

Available

- 4 1/2", 5", 6"
- NH/NST

***Dry hydrant sizes are determined by your local fire department.
Please contact your local fire department before purchasing.***

Straight PVC models DO NOT incorporate slip-socket adapter. 45° and 90° PVC models incorporate slip-socket adapter for glue-on connection to a 6" schedule 40 PVC pipe. Adapter (No PVC) models will screw onto any male 6" NPT pipe fitting.