

BUILDING CHARACTERISTICS

EXTERIOR WALL	15 CONC BLOCK 100
ROOF COVER	03 GABLE/HIP 100
ROOF STRUCT	12 MODULAR MT 100
INTERIOR WALL	05 DRYWALL 100
INTERIOR FLOOR	14 CARPET 90
INTERIOR FLOOR	08 SHT VINYL 10
AIR CONDITION	02 WINDOW 100
HEATING TYPE	04 AIR DUCTED 100
BEDROOMS	2 100
BATHROOMS	1 100
FRAME	01 NONE 100
STORIES	1. 1. 100
ARCHITECTURAL	05 CONV 100
UNITS	0 100
CONDITION ADJ	01 01 100
KITCHEN ADJUS	01 01 100

VALUATION SUMMARY

VALUATION BY	Tax Diet:	STANDARD
BUILDING MARKET VALUE		56,348
TOTAL LAND VALUE - MARKET		14,095
TOTAL MARKET VALUE		37,500
SOH/AGL Deduction		21,007
ASSESSED VALUE		86,936
TOTAL EXEMPTION VALUE		48,598
BASE TAXABLE VALUE		38,338
TOTAL JUST VALUE		107,943
INCOME VALUE		0
PREVIOUS YEAR MKT VALUE		

SALES DATA

OFF RECORD Number	DATE	TYPE	Q	V	RSN	SALE PRICE
1471/79	7/13/2022	INST	U	I	14	100
GRANTOR: ORGOVAN SUSAN (LIFE E						
GRANTEE: SMITH KONNIE K (RMD						
1358/1537	4/20/2018	QC	U	I	11	100
GRANTOR: DONALD J & SUSAN ORGO						
GRANTEE: DONALD J ORGOVAN &						

BUILDING DIMENSIONS

BAS= W32 S20 E32 N20S.

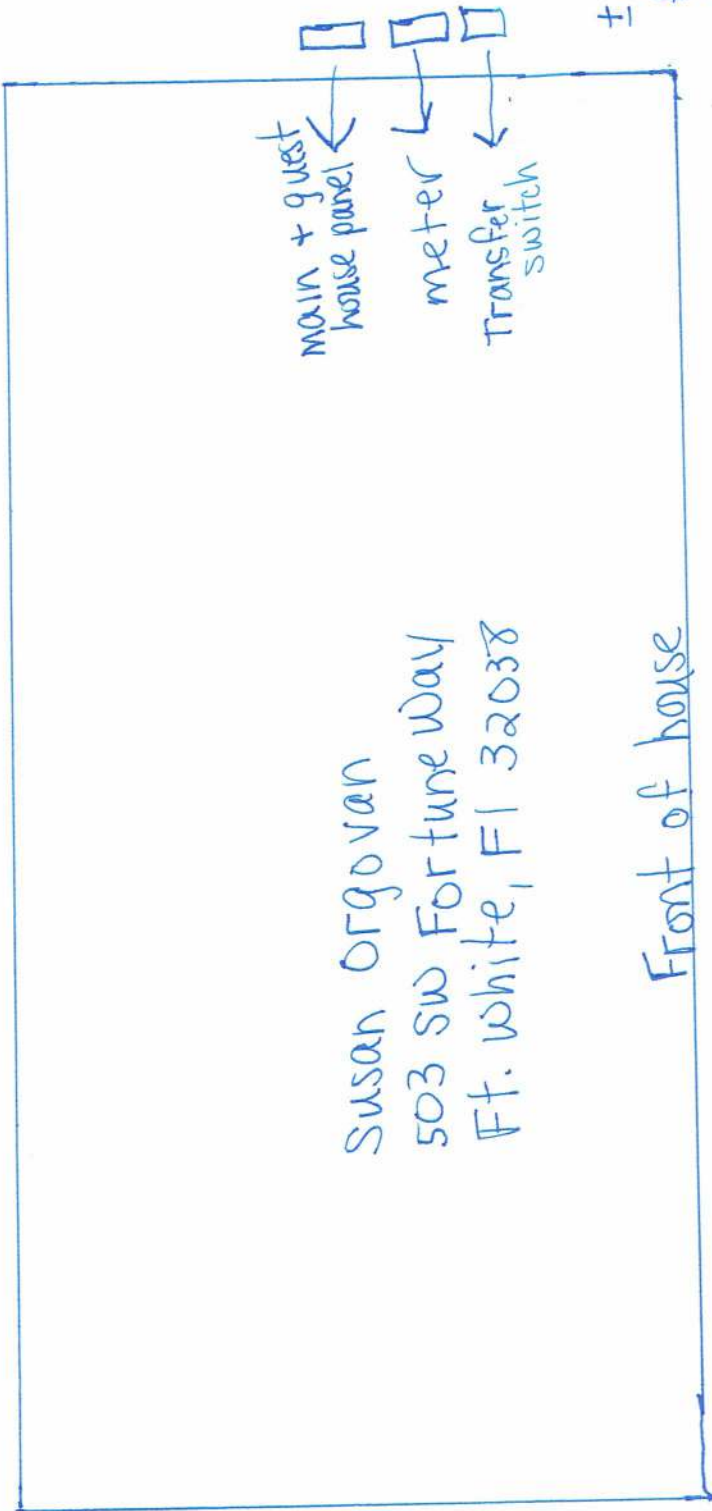
BUILDING CHARACTERISTICS										MARKET ADJUSTMENTS									
EXTRAMUR										CONSTRUCTION									
EXTERIOR WALL										15 CONC BLOCK 100									
ROOF STRUCTURE										03 GABLE/HIP 100									
ROOF COVER										12 MODULAR MT 100									
INTERIOR WALL										05 DRYWALL 100									
INTERIOR FLOOR										14 CARPET 90									
INTERIOR FLOOR										08 SHT VINYL 10									
AIR CONDITION										02 WINDOW 100									
HEATING TYPE										04 AIR DUCTED 100									
BEDROOMS										2 100									
BATHROOMS										1 100									
FRAME										01 NONE 100									
STORIES										1. 1. 100									
ARCHITECTURAL										05 CONV 100									
UNITS										0 100									
CONDITION ADJ										01 01 100									
KITCHEN ADJ										01 01 100									
QUALITY										03 03									
DOR CODE										0200 MOBILE HOME									
MAP NUM										MKT AREA									
NEIGHBORHOOD/LOC										17717.010 1.00/									
TOTAL GROSS AREA										PCT OF BASE									
TOTAL GROSS AREA										TOTAL ADJ AREA									
SUBAREA										MARKET VALUE									
BAS										640 100 640 27,793									

TOTALS										640 27,793									
EXTRA FEATURES										503 SW FORTUNE Way, FORT WHITE									
L OBLX										MKT DATE									
N CODE										LAND DATE									
										AG DATE									
										OBX/F MKT									
										VALUE									
										NOTES									
										</									

± 348' + 0' rear
of property

± 147'
to side of prop

± 246' to
front of
property



main + guest
house panel

meter

Transfer
switch

Susan Orgovan
503 SW Fortune Way
Ft. White, FL 32038

Front of house



TRADEMARK ELECTRIC INC.
2001 NE 20TH STREET
OCALA, FL 34470
(352) 629-8617

Sizing Report

Rated Nominal Voltage 240
Generator Fuel Choice Propane
Sizing Method (NEC 220) Part IV
(Part III required for selected circuit implementation, Both valid for whole house)

General Lighting & Receptacles		Load (kW)
Square Footage Being Covered (ft ²)	2200	6.6
Small Appliance Circuits (20 amps)		
Kitchen Circuits	2	3
Laundry Circuits	1	1.5

	Managed Loads	Estimated (kW)	Nameplate (amps)	240 V	Load (kW)
Fixed-In-Place Appliances & Motors					
Dryer		5.5		X	5.5
Microwave		1.3			1.3
Water Heater		5.0		X	5.0
Dishwasher		1.5			1.5
Refrigerator		0.8			0.8
Well Pump		1.5			1.5
Pool Pump		2.0			2.0
Refrigerator		0.8			0.8

	Managed Loads	Estimated (kW)	Nameplate (amps)	240 V	Load (kW)
Air Conditioning & Cooling					
3.0 Ton Unit		3.0		X	3.0

	Managed Loads	Estimated (kW)	Nameplate (amps)	240 V	Load (kW)
Heating & Heat Pumps					
Heat Pump (3 Ton)		3.0		X	3.0

	Estimated (LRA)	Actual (LRA)	Utilized (LRA)
Transient Requirement			
Largest Motor's Starting Amps (LRA)	86	0	86

	Load (kW)	NEC Required
Summary NEC Load		
General Lighting & Receptacles	11.1	
Fixed-in-Place Appliances & Motors	18.4	
Sum of all General Loads	29.5	17.8
Cooling	3	3
Heating (w/demand factors)	3	3
Larger of Heating & Cooling	3	3

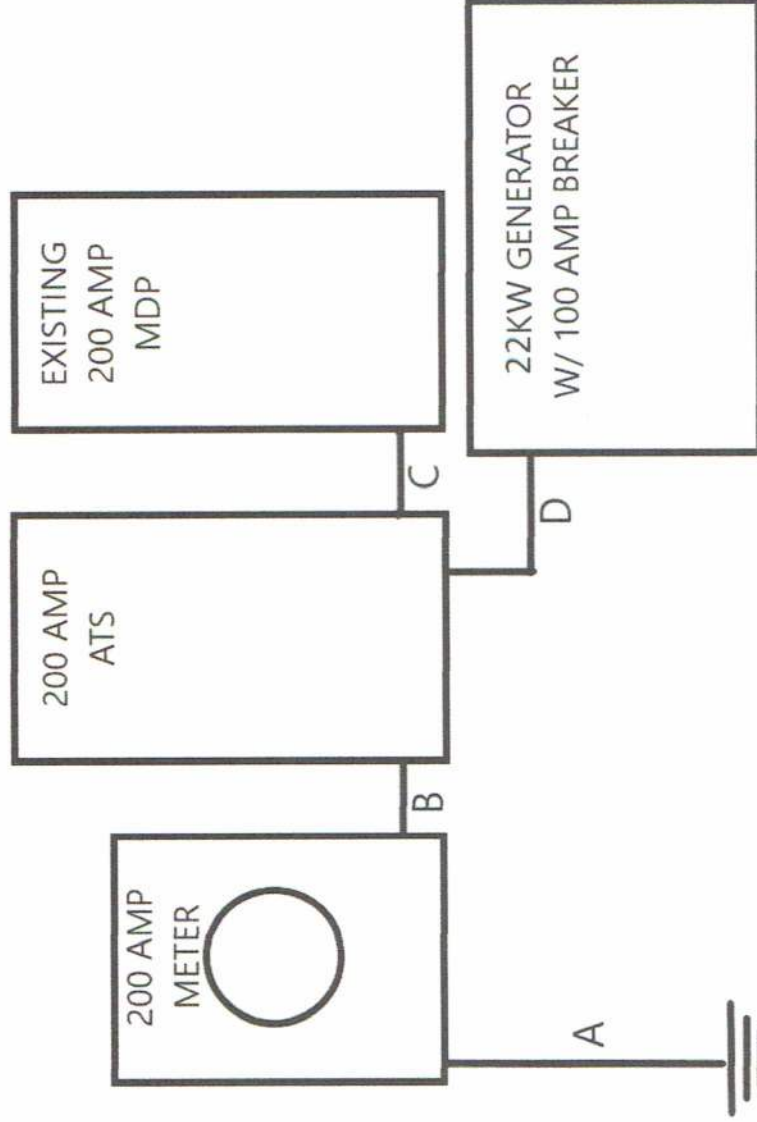
Sizing based on requirements of NEC Article 220, Part IV 20.8
Minimum size generator for motor starting requirements 11

22 kW Generac Model Generator Recommended

Trademark Electric, Inc.
 3621 NW 27th Ave
 Ocala, FL 34475

- A. Existing #4 Bare Copper to two 8' groundrods spaced 6' apart
- B. 2" PVC W/ three 2/0 THHN
- C. 2" PVC W/ three 2/0 THHN & one #6 THHN
- D. 1.5" PVC W/ three #1 THWN, one #6 THWN and six #18 TFFN

Riser for: Donald Orgovan
 503 SW Fortune way
 Ft. White, FL 32038



GENERAC®

GUARDIAN® SERIES Residential Standby Generators Air-Cooled Gas Engine

20/22/24 kW

Standby Power Rating

G007038-1, G007039-1, G007038-3, G007039-3 (Aluminum - Bisque) - 20 kW 60 Hz
G007042-10, G007042-11, G007043-10, G007043-11 (Aluminum - Bisque) - 22 kW 60 Hz
G007209-10, G007210-10 (Aluminum - Bisque) - 24 kW 60 Hz

INCLUDES:

- True Power™ Electrical Technology
- Two-line multilingual digital LCD Evolution™ controller (English/Spanish/French/Portuguese)
- 200 amp service rated transfer switch available
- Electronic governor
- Standard Wi-Fi® connectivity
- System status & maintenance interval LED indicators
- Sound attenuated enclosure
- Flexible fuel line connector
- Natural gas or LP gas operation
- 5 Year limited warranty
- Listed and labeled for installation as close as 18 in (457 mm) to a structure.*
*Must be located away from doors, windows, and fresh air intakes and in accordance with local codes.



Product shown with optional fascia kit



QUIET-TEST™



Note: CETL or CUL certification only applies to unbundled units and units packaged with limited circuit switches. Units packaged with the Smart Switch are ETL or UL certified in the USA only.

FEATURES

- **INNOVATIVE ENGINE DESIGN & RIGOROUS TESTING** are at the heart of Generac's success in providing the most reliable generators possible. Generac's G-Force engine lineup offers added peace of mind and reliability for when it's needed the most. The G-Force series engines are purpose built and designed to handle the rigors of extended run times in high temperatures and extreme operating conditions.
- **TRUE POWER™ ELECTRICAL TECHNOLOGY:** Superior harmonics and sine wave form produce less than 5% Total Harmonic Distortion for utility quality power. This allows confident operation of sensitive electronic equipment and micro-chip based appliances, such as variable speed HVAC systems.
- **TEST CRITERIA:**
 - ✓ **PROTOTYPE TESTED**
 - ✓ **SYSTEM TORSIONAL TESTED**
 - ✓ **NEMA MG1-22 EVALUATION**
 - ✓ **MOTOR STARTING ABILITY**
- **SOLID-STATE, FREQUENCY COMPENSATED VOLTAGE REGULATION:** This state-of-the-art power maximizing regulation system is standard on all Generac models. It provides optimized FAST RESPONSE to changing load conditions and MAXIMUM MOTOR STARTING CAPABILITY by electronically torque-matching the surge loads to the engine. Digital voltage regulation at $\pm 1\%$.
- **SINGLE SOURCE SERVICE RESPONSE** from Generac's extensive dealer network provides parts and service know-how for the entire unit, from the engine to the smallest electronic component.
- **GENERAC TRANSFER SWITCHES:** Long life and reliability are synonymous with GENERAC POWER SYSTEMS. One reason for this confidence is that the GENERAC product line is offered with its own transfer systems and controls for total system compatibility.
- **MOBILE LINK® CONNECTIVITY:** FREE with select Guardian Series Home standby generators, Mobile Link Wi-Fi allows users to monitor generator status from anywhere in the world using a smartphone, tablet, or PC. Easily access information such as the current operating status and maintenance alerts. Users can connect an account to an authorized service dealer for fast, friendly, and proactive service. With Mobile Link, users are taken care of before the next power outage.

THE GENERAC
PROMISE



©2014 Generac Power Systems, Inc. All rights reserved. www.generac.com

20/22/24 kW

Features and Benefits

Engine

- Generac G-Force design
- "Spiny-lok" cast iron cylinder walls
- Electronic ignition/spark advance
- Full pressure lubrication system
- Low oil pressure shutdown system
- High temperature shutdown

Maximizes engine "breathing" for increased fuel efficiency. Plateau honed cylinder walls and plasma moly rings help the engine run cooler, reducing oil consumption and resulting in longer engine life.

Rigid construction and added durability provide long engine life.

These features combine to assure smooth, quick starting every time.

Pressurized lubrication to all vital bearings means better performance, less maintenance, and longer engine life. Now featuring up to a 2 year/200 hour oil change interval.

Shutdown protection prevents catastrophic engine damage due to low oil.

Prevents damage due to overheating.

Generator

- Revolving field
- Skewed stator
- Displaced phase excitation
- Automatic voltage regulation
- EPA Certified for non-emergency applications
- UL 2200 listed

Allows for a smaller, light weight unit that operates 25% more efficiently than a revolving armature generator.

Produces a smooth output waveform for compatibility with electronic equipment.

Maximizes motor starting capability.

Regulating output voltage to $\pm 1\%$ prevents damaging voltage spikes.

Allows unit to be used for demand response applications (excluding 20 kW units).

For your safety.

Transfer Switch (if applicable)

- Fully automatic
- NEMA 3R
- Integrated load management technology
- Remote mounting

Transfers vital electrical loads to the energized source of power.

Can be installed inside or outside for maximum flexibility.

Capability to manage additional loads for efficient power management.

Mounts near an existing distribution panel for simple, low-cost installation.

Evolution™ Controls

- AUTO/MANUAL/OFF illuminated buttons
- Two-line multilingual LCD
- Sealed, raised buttons
- Utility voltage sensing
- Generator voltage sensing
- Utility interrupt delay
- Engine warm-up
- Engine cool-down
- Programmable exercise
- Smart battery charger
- Main line circuit breaker
- Electronic governor

Selects the operating mode and provides easy, at-a-glance status indication in any condition.

Provides homeowners easily visible logs of history, maintenance, and events up to 50 occurrences.

Smooth, weather-resistant user interface for programming and operations.

Constantly monitors utility voltage, setpoints 65% dropout, 80% pick-up, of standard voltage.

Constantly monitors generator voltage to verify the cleanest power delivered to the home.

Prevents nuisance start-ups of the engine, adjustable 2-1500 seconds from the factory default setting of 5 seconds by a qualified dealer.

Verifies engine is ready to assume the load, setpoint approximately 5 seconds.

Allows engine to cool prior to shutdown, setpoint approximately 1 minute.

Operates engine to prevent oil seal drying and damage between power outages by running the generator for 5 minutes every other week. Also offers a selectable setting for weekly or monthly operation providing flexibility and potentially lower fuel costs to the owner.

Delivers charge to the battery only when needed at varying rates depending on outdoor air temperature. Compatible with lead acid and AGM-style batteries.

Protects generator from overload.

Maintains constant 60 Hz frequency.

Unit

- SAE weather protective enclosure
- Enclosed critical grade muffler
- Small, compact, attractive

Sound attenuated enclosures ensure quiet operation and protection against mother nature, withstanding winds up to 150 mph (241 km/h). Hinged key locking roof panel for security. Lift-out front for easy access to all routine maintenance items. Electrostatically applied textured epoxy paint for added durability.

Quiet, critical grade muffler is mounted inside the unit to prevent injuries.

Makes for an easy, eye appealing installation, as close as 18 in (457 mm) away from a structure.

20/22/24 kW

Features and Benefits

Installation System

- 14 in (35.6 cm) flexible fuel line connector
- Integral sediment trap

Listed ANSI Z21.75/CSA 6.27 outdoor appliance connector for the required connection to the gas supply piping.

Meets IFGC and NFPA 54 installation requirements.

Connectivity (Wi-Fi equipped models only)

- Ability to view generator status
- Ability to view generator Exercise/Run and Total Hours
- Ability to view generator maintenance information
- Monthly report with previous month's activity
- Ability to view generator battery information
- Weather information

Monitor generator with a smartphone, tablet, or computer at any time via the Mobile Link application for complete peace of mind.

Review the generator's complete protection profile for exercise hours and total hours.

Provides maintenance information for the specific model generator when scheduled maintenance is due.

Detailed monthly reports provide historical generator information.

Built in battery diagnostics displaying current state of the battery.

Provides detailed local ambient weather conditions for generator location.

20/22/24 kW

Generator

Model	G007038-1 G007039-1 (20 kW)	G007042-10 G007043-10 (22 kW)	G007038-3 G007039-3 (20 kW)	G007042-11 G007043-11 (22 kW)	G007209-10 G007210-10 (24 kW)
Rated maximum continuous power capacity (LP)	20,000 Watts*	22,000 Watts*	20,000 Watts*	22,000 Watts*	24,000 Watts*
Rated maximum continuous power capacity (NG)	18,000 Watts*	19,500 Watts*	18,000 Watts*	19,500 Watts*	21,000 Watts*
Rated voltage	240				
Rated maximum continuous load current – 240 volts (LP/NG)	83.3 / 75.0	91.7 / 81.3	83.3 / 75.0	91.7 / 81.3	100 / 87.5
Total Harmonic Distortion	Less than 5%				
Main line circuit breaker	90 amp	100 amp	90 amp	100 amp	100 amp
Phase	1				
Number of rotor poles	2				
Rated AC frequency	60 Hz				
Power factor	1.0				
Battery requirement (not included)	12 Volts, Group 26R 540 CCA minimum or Group 35AGM 650 CCA minimum				
Unit weight (lb / kg)	448 / 203	466 / 211	436 / 198	445 / 202	455 / 206
Dimensions (L x W x H) in / cm	48 x 25 x 29 / 121.9 x 63.5 x 73.7				
Sound output in dB(A) at 23 ft (7 m) with generator operating at normal load**	67	67	67	67	67
Sound output in dB(A) at 23 ft (7 m) with generator in Quiet-Test™ low-speed exercise mode**	55	57	55	57	57
Exercise duration	5 min				

Engine

Engine type	GENERAC G-Force 1000 Series				
Number of cylinders	2				
Displacement	999 cc				
Cylinder block	Aluminum w/ cast iron sleeve				
Valve arrangement	Overhead valve				
Ignition system	Solid-state w/ magneto				
Governor system	Electronic				
Compression ratio	9.5:1				
Starter	12 VDC				
Oil capacity including filter	Approx. 1.9 qt / 1.8 L				
Operating rpm	3,600				
Fuel consumption					
Natural gas	ft ³ /hr (m ³ /hr)				
1/2 Load	204 (5.78)	228 (6.46)	164 (4.64)		203 (5.75)
Full Load	301 (8.52)	327 (9.26)	287 (8.13)		306 (8.66)
Liquid propane	ft ³ /hr (gal/hr) [L/hr]				
1/2 Load	87 (2.37) [8.99]	92 (2.53) [9.57]	86 (2.36) [8.95]		92 (2.53) [9.57]
Full Load	130 (3.56) [13.48]	142 (3.90) [14.77]	136 (3.74) [14.15]		142 (3.90) [14.77]

Note: **Fuel pipe must be sized for full load.** Required fuel pressure to generator fuel inlet at all load ranges - 3.5–7 in water column (0.87–1.74 kPa) for NG, 10–12 in water column (2.49–2.99 kPa) for LP gas. For BTU content, multiply ft³/hr x 2500 (LP) or ft³/hr x 1000 (NG). For Megajoule content, multiply m³/hr x 93.15 (LP) or m³/hr x 37.26 (NG).

Controls

Two-line plain text multilingual LCD	Simple user interface for ease of operation.				
Mode buttons: AUTO	Automatic start on utility failure. Weekly, Bi-weekly, or Monthly selectable exerciser.				
MANUAL	Start with starter control, unit stays on. If utility fails, transfer to load takes place.				
OFF	Stops unit. Power is removed. Control and charger still operate.				
Ready to Run/Maintenance messages	Standard				
Engine run hours indication	Standard				
Programmable start delay between 2–1500 seconds	Standard (programmable by dealer only)				
Utility Voltage Loss/Return to Utility adjustable (brownout setting)	From 140–171 V / 190–216 V				
Future Set Capable Exerciser/Exercise Set Error warning	Standard				
Run/Alarm/Maintenance logs	50 events each				
Engine start sequence	Cyclic cranking: 16 sec on, 7 rest (90 sec maximum duration).				
Starter lock-out	Starter cannot re-engage until 5 sec after engine has stopped.				
Smart Battery Charger	Standard				
Charger Fault/Missing AC warning	Standard				
Low Battery/Battery Problem Protection and Battery Condition indication	Standard				
Automatic Voltage Regulation with Over and Under Voltage Protection	Standard				
Under-Frequency/Overload/Stepper Overcurrent Protection	Standard				
Safety Fused/Fuse Problem Protection	Standard				
Automatic Low Oil Pressure/High Oil Temperature Shutdown	Standard				
Overcrank/Overspeed (@ 72 Hz)/rpm Sense Loss Shutdown	Standard				
High Engine Temperature Shutdown	Standard				
Internal Fault/Incorrect Wiring protection	Standard				
Common external fault capability	Standard				
Field upgradable firmware	Standard				

Rating definitions - Optional Standby: Applicable for supplying backup power for the duration of the utility power outage with correct maintenance performed. No overload capability is available for this rating. (All ratings in accordance with BS5514, ISO3046, UL2200, and DIN6271).

* Maximum kilowatt amps and current are subject to and limited by such factors as fuel BTU/megajoule content, ambient temperature, altitude, engine power and condition, etc. Maximum power decreases approximately 3.5% for each 1,000 ft (304.8 m) above sea level; and also will decrease approximately 1% for each 10 °F (6 °C) above 60 °F (16 °C).

** Sound levels are taken from the front of the generator. Sound levels taken from other sides of the generator may be higher depending on installation parameters.

20/22/24 kW

Service Rated Automatic Transfer Switch Features

- Intelligently manages up to four air conditioner loads with no additional hardware.
- Up to eight additional large (240 VAC) loads can be managed when used in conjunction with Smart Management Modules (SMMs).
- Electrically operated, mechanically-held contacts for fast, clean connections.
- Main breakers are rated for 80% continuous load.
- 2-pole, 250 VAC contactors.
- Service equipment rated, dual coil design.
- Rated for both aluminum and copper conductors.
- Main contacts are silver plated or silver alloy to resist welding and sticking.
- NEMA/UL 3R aluminum outdoor enclosure allows for indoor or outdoor mounting flexibility.

Dimensions

	200 Amps 120/240, 1Ø Open Transition Service Rated				
	Height		Width		Depth
	H1	H2	W1	W2	
in	26.8	30.1	10.5	13.5	6.9
cm	67.95	76.43	26.67	34.18	17.5

Wire Ranges

Conductor Lug	Neutral Lug	Ground Lug
250 MCM - #6	350 MCM - #6	2/0 - #14

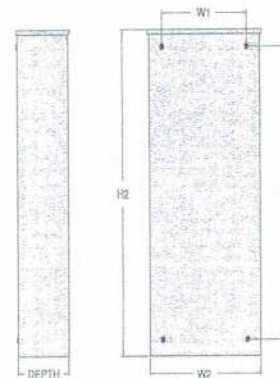
Model

G007039-1, G007039-3 (20 kW)
G007043-10, G007043-11 (22 kW)
G007210-10 (24 kW)

No. of poles	2
Current rating (amps)	200
Voltage rating (VAC)	120/240, 1Ø
Utility voltage monitor (fixed)*	
-Pick-up	80%
-Dropout	65%
Return to Utility*	Approx. 13 sec
ETL or UL listed	Standard
Enclosure type	NEMA/UL 3R
Circuit breaker protected	22,000
Lug range	250 MCM - #6

*Function of Evolution controller

Exercise can be set to weekly, bi-weekly, or monthly



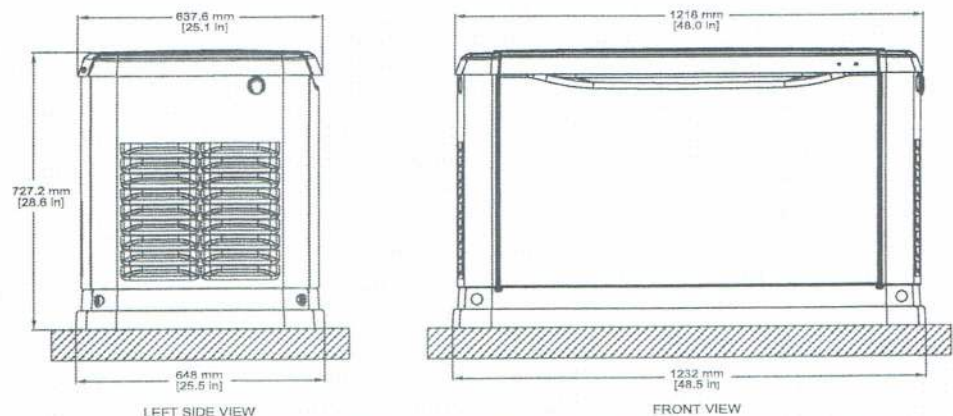
20/22/24 kW

Available Accessories

Model #	Product	Description
G007101-0	Battery Pad Warmer	Pad warmer rests under the battery. Recommended for use if temperature regularly falls below 0 °F (-18 °C). (Not necessary for use with AGM-style batteries).
G007102-0	Oil Warmer	Oil warmer slips directly over the oil filter. Recommended for use if temperature regularly falls below 0 °F (-18 °C).
G007103-1	Breather Warmer	Breather warmer is for use in extreme cold weather applications. For use with Evolution controllers only in climates where heavy icing occurs.
G005621-0	Auxiliary Transfer Switch Contact Kit	The auxiliary transfer switch contact kit allows the transfer switch to lock out a single large electrical load that may not be needed. Not compatible with 50 amp pre-wired switches.
G007027-0 - Bisque	Fascia Base Wrap Kit	The fascia base wrap snaps together around the bottom of the new air-cooled generators. This offers a sleek, contoured appearance as well as offering protection from rodents and insects by covering the lifting holes located in the base.
G005703-0 - Bisque	Touch-Up Paint Kit	If the generator enclosure is scratched or damaged, it is important to touch up the paint to protect from future corrosion. The touch-up paint kit includes the necessary paint to correctly maintain or touch up a generator enclosure.
G006485-0	Scheduled Maintenance Kit	Generac's scheduled maintenance kit provides all the items necessary to perform complete routine maintenance on a Generac automatic standby generator (oil not included).
G007005-0	Wi-Fi LP Tank Fuel Level Monitor	The Wi-Fi enabled LP tank fuel level monitor provides constant monitoring of the connected LP fuel tank. Monitoring the LP tank's fuel level is an important step in verifying the generator is ready to run during an unexpected power failure. Status alerts are available through a free application to notify users when the LP tank is in need of a refill.
G007000-0 (50 amp) G007006-0 (100 amp)	Smart Management Module	Smart Management Modules (SMM) are used to optimize the performance of a standby generator. It manages large electrical loads upon startup and sheds them to aid in recovery when overloaded. In many cases, using SMM's can reduce the overall size and cost of the system.
G007169-0 - 4G LTE G007170-0 - Wi-Fi/ Ethernet	Mobile Link® Cellular Accessories	The Mobile Link family of Cellular Accessories allow users to monitor generator status from anywhere in the world, using a smart phone, tablet, or PC. Easily access information such as the current operating status and maintenance alerts. Users can connect an account with an authorized service dealer for fast, friendly, and proactive service. With Mobile Link, users are taken care of before the next power outage.
G007220-0 - Bisque	Base Plug Kit	Base plugs snap into the lifting holes on the base of air-cooled home standby generators. This offers a sleek, contoured appearance, as well as offers protection from rodents and insects by covering the lifting holes located in the base. Kit contains four plugs, sufficient for use on a single air-cooled home standby generator.

Dimensions & UPCs

Model	UPC
G007038	696471074185
G007039	696471074192
G007042	696471074208
G007043	696471074215
G007209	696471071511
G007210	696471084801



Dimensions shown are approximate. See installation manual for exact dimensions. DO NOT USE THESE DIMENSIONS FOR INSTALLATION PURPOSES.

Automatic Transfer Switches

GENERAC®

Service and non-Service rated Automatic Smart Transfer Switches

100 - 400 Amps, Single Phase



*CUL only applies to non-service rated switches

Description

Generac Automatic Transfer Switches are designed for use with single phase generators that utilize an Evolution™ or Nexus™ Controller. The 100, 200, and 400 amp open transition switches are available in single phase in both service equipment rated and non-service equipment rated configurations. The 150 and 300 amp open transition switches are only available in a service rated equipment configuration.

Standard Features

Service rated (RXSW) Generac Automatic Transfer Switches are housed in an aluminum NEMA/UL Type 3R enclosure*, with electrostatically applied and baked powder paint. The Heavy Duty Generac Contactor is a UL recognized device, designed for years of service. The controller at the generator handles all the timing, sensing, exercising functions, and transfer commands. All switches are covered by a 5 year limited warranty.

* Non-service rated (RXSC) switches are housed in a steel enclosure.

DPM Technology

Through the use of digital power technology (DPM), these switches have the capability to manage up to 4 individual HVAC (24 VAC controlled) loads with no additional hardware. When used in tandem with Smart Management Modules, up to 8 more loads can be managed as well, providing the most installation efficient power management options available.

GENERAC®



100-400 Amps, Single Phase**Automatic Smart Transfer Switches****Functions**

All timing and sensing functions originate in the generator controller

Utility voltage drop-out.....	<65%
Timer to generator start.....	10 second factory set, adjustable between 2-1500 seconds by a qualified dealer**
Engine warm up delay.....	5 seconds
Standby voltage sensor.....	65% for 5 seconds
Utility voltage pickup.....	>60%
Re-transfer time delay.....	15 seconds
Engine cool-down timer.....	60 seconds
Exorciser.....	5 or 12 minutes adjustable weekly/BI-weekly/Monthly**

The transfer switch can be operated manually without power applied.

*When used in conjunction with units utilizing Evolution™ controls **Adjustable via the controller

Specifications

Model	RXSC100A3	RXSW100A3	RXSW150A3	RXSC200A3	RXSW200A3	RXSW300A3	RXSC400A3	RXSW400A3
Amps	100	100	150	200	200	300	400	400
Voltage	120/240, 1ø	120/240, 1ø	120/240, 1ø	120/240, 1ø	120/240, 1ø	120/240, 1ø	120/240, 1ø	120/240, 1ø
Load Transition Type (Automatic)	Open Transition	Open Transition Service Rated	Open Transition Service Rated	Open Transition	Open Transition Service Rated	Open Transition Service Rated	Open Transition	Open Transition Service Rated
Enclosure Type	NEMA/UL 3R	NEMA/UL 3R	NEMA/UL 3R	NEMA/UL 3R	NEMA/UL 3R	NEMA/UL 3R	NEMA/UL 3R	NEMA/UL 3R
UL Rating	UL/CUL	UL	UL	UL/CUL	UL	UL	UL/CUL	UL
Withstand Rating (Amps)	10,000	10,000	22,000	10,000	22,000	22,000	22,000	22,000
Lug Range	1/0 - #14		250 MCM - #6			600 MCM - #4 or 1/0 - 250 MCM		

Dimensions

Model		RXSC100A3	RXSW100A3	RXSW150A3	RXSC200A3	RXSW200A3	RXSW300A3	RXSC400A3	RXSW400A3
Height (in./mm)	H1	17.24/437.9	17.24/437.9	26.75/679.4	17.24/437.9	26.75/679.4	42.91/1089.9	31.25/793.8	42.91/1089.9
	H2	20/508	20/508	30/762	20/508	30/762	48/1219.2	36/914.4	48/1219.2
Width (in./mm)	W1	12.5/317.5	12.5/317.5	10.5/266.7	12.5/317.5	10.5/266.7	16.69/423.9	19.18/487.2	16.69/423.9
	W2	14.6/370.8	14.6/370.8	13.5/342.9	14.6/370.8	13.5/342.9	21.82/554.2	24/609.6	21.82/554.2
Depth (in./mm)		7.09/180.1	7.09/180.1	6.3/160.1	7.09/180.1	6.3/160.1	10.06/255.5	10.06/255.5	10.06/255.5
Weight (lbs./kilos)		20/9.07	22.5/10.21	39/17.69	20/9.07	39/17.69	140/63.6	133/60.33	140/63.6

