

WALK'S EXXON - ADDITION
3221 W. US HIGHWAY 90
LAKE CITY, FLORIDA

DOOR SCHEDULE								
NO.	SFX	WIDTH	HT.	THK.	MATL.	FRAME MATL.	DR./FR. ELEV.	HWR. GRP.
108	A	3'-0"	7'-0"	1 3/4"	H.M.	H.M.	A/AA	1
109	A	3'-0"	7'-0"	1 3/4"	H.M.	H.M.	A/AA	2
110	A	3'-0"	7'-0"	1 3/4"	H.M.	H.M.	A/BB	3
111	A	3'-0"	7'-0"	1 3/4"	H.M.	H.M.	A/BB	2
112	A	3'-0"	7'-0"	1 3/4"	H.M.	H.M.	A/AA	4

1. FLORIDA BUILDING CODE 2010.
2. FLORIDA FIRE PREVENTION CODE 2010.
3. EXISTING BUILDING = 2,870 GROSS SQUARE FEET.
4. NEW BUILDING ADDITION = 804 GROSS SQUARE FEET
5. OCCUPANCY CLASSIFICATION = MERCANTILE GROUP M
6. TYPE OF EXISTING AND NEW BUILDING CONSTRUCTION IS TYPE V B.

REMARKS

1. INSTALL CEILING AS HIGH AS POSSIBLE OR TO MATCH EXISTING.
2. FLOOR AND BASE TILE SHALL BE AS SELECTED BY OWNER.
3. CONCRETE FLOOR SEALER IN ROOMS 110 AND 112 SHALL BE EQUAL TO SIKAGUARD 62 WATERBORNE EPOXY WITH NON SLIP GRANULES.
4. ALL COLOR SPECIFICATIONS SHALL BE BY OWNER.

DOOR AND FRAME ELEVATIONS

FLORIDA BUILDING CODE 2010, ASCE 7-10 AND ACI 318-08

1. ROOF DEAD LOAD = 12 PSF
2. ROOF LIVE LOAD = 30 PSF
3. ULTIMATE DESIGN WIND SPEED (3-SECOND GUST) = 119 MPH
4. NOMINAL DESIGN WIND SPEED = 93 MPH
5. WIND IMPORTANCE FACTOR = 1.15
6. RISK CATEGORY = II
7. WIND EXPOSURE = B
8. APPLICABLE ENCLOSURE CLASSIFICATION = ENCLOSED
9. INTERNAL PRESSURE COEFFICIENT = +/- 0.18
10. COMPONENTS AND CLADDING DESIGN WIND PRESSURE = 25.4 PSF
11. ASSUMED ALLOWABLE SOIL PRESSURE = 2,000 PSF
12. REINFORCED CONCRETE = 3,000 PSI

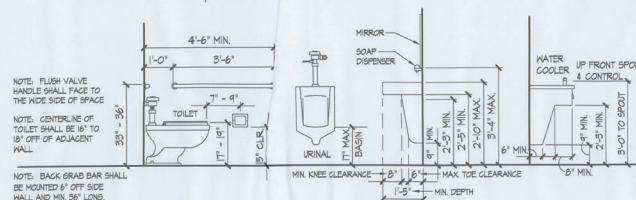
G-1 GENERAL PROJECT COVER SHEET
D-1 DEMOLITION PLAN
A-1 FOUNDATION PLAN
A-2 FLOOR PLAN
A-3 EXTERIOR ELEVATIONS
A-4 SECTIONS
A-5 ROOF FRAMING PLAN AND ROOF PLAN
A-6 REFLECTED CEILING PLAN AND RESTROOM
DIMENSION PLAN

1. TOTAL NET FLOOR AREA = 3,307
2. TOTAL NET FLOOR AREA OF ACCESSORY SPACES = 764
3. OCCUPANT LOAD OF ACCESSORY SPACES = 4
4. TOTAL NET FLOOR AREA OF MERCANTILE SPACES = 2,543
5. OCCUPANT LOAD OF MERCANTILE SPACES = 85
6. TOTAL OCCUPANT LOAD = 89

1. TOTAL OCCUPANT LOAD = 88
2. 44 MALE AND 44 FEMALE
3. ONE WATER CLOSET REQUIRED FOR MALE AND FEMALE
4. ONE LAVATORY REQUIRED FOR MALE AND FEMALE

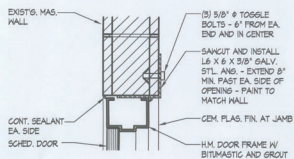
Diagram illustrating the clearances and mounting requirements for a fire alarm control panel:

- PAPER TONER DISPENSER:** 3'-4" MAX clearance.
- LIGHT SWITCH THERMOSTAT FIRE ALARM WINDOW CORD:** 4'-0" MAX clearance.
- NOTES: CONTROLS OF FREQUENT OR ESSENTIAL USES SHALL NOT BE HIGHER THAN 48" A.F.F.**
- ELECTRICAL RECEPTACLE:** 1'-4" MIN clearance.
- FIRE EXTINGUISHER:** 4'-0" MAX clearance.
- DOOR:** 2'-2" MAX clearance.
- LATCH SIDE:** 3" clearance.
- ROOM SIGNAGE:** 5'-0" clearance.

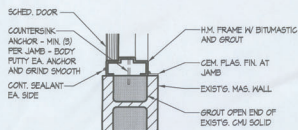


CONSTRUCTION DOCUMENTS

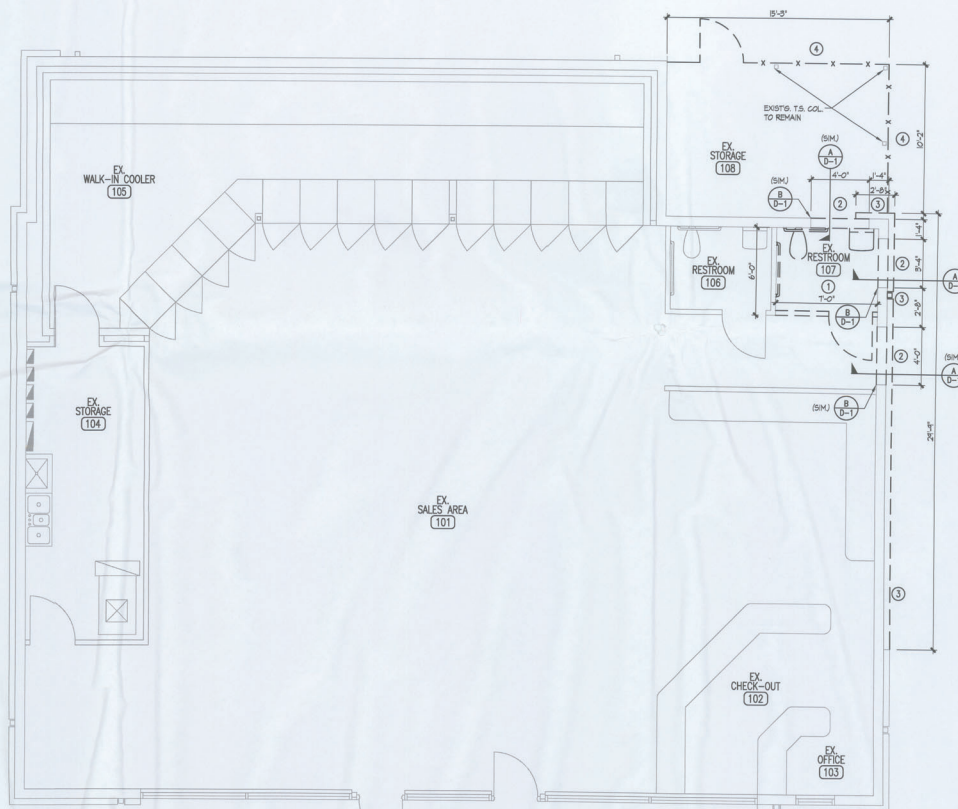
- NOTES:
1. FILL CELLS EA. SIDE OF OPNG. UP TO BOT. OF ANG.
 2. NEW STL. ANG. SHALL EXTEND 6" MIN. BEYOND OPNG. EA. SIDE.
 3. PROVIDE KNOCKOUT AT BOT. OF WALL TO ENSURE PROPER FILLING OF CELLS.
 4. PRIOR TO REMOVAL OF ENTIRE BLOCKOUT FOR NEW OPNG. VERTICALLY SANGUIT AT OPNG. EDGES AND KNOCKOUT BLOCK FACES TO PROVIDE GROUT AS REQD. PROVIDE HORIZ. SANGUIT AND INSTALL UNTIL ASSEMBLY. REMOVE REMAINDER OF BLOCKOUT WHEN INSTALLATION OF OPNG. REINFORCEMENT IS COMPLETE.



DOOR HEAD DETAIL (A)
1 1/2" = 1'-0"



DOOR JAMB DETAIL (B)
1 1/2" = 1'-0"



DEMOLITION PLAN
1/4" = 1'-0"

DEMOLITION NOTES

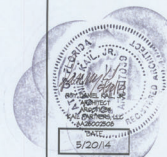
1. REMOVE EXIST'G. DOOR, WALL, RESTROOM ACCESSORIES, FLOORING FINISHES, CEILING, ETC. IN AREA INDICATED - PATCH AND PREP ALL REMAINING SURFACES FOR NEW FINISHES AS SHOWN ON SHEET G-1 OR AS A MINIMUM TO MATCH EXIST'G. OTHERWISE.
2. SANGUIT NEW 4'-0" OR 3'-4" WIDE AS INDICATED X 1'-4" HIGH CASED OPNG. IN EXIST'G. CHU WALL - PATCH AND PREP ALL REMAINING SURFACES FOR NEW FINISHES AS SHOWN ON SHEET G-1 OR AS A MINIMUM TO MATCH EXIST'G. OTHERWISE.
3. REMOVE EXIST'G. BRICK VENEER AND DOWNSPOUT AS INDICATED AND TO COORDINATE WITH NEW WORK - REFER TO THE EXTERIOR ELEVATION ON SHEET A-5 - PATCH AND PREP ALL REMAINING SURFACES FOR NEW FINISHES AS SHOWN ON SHEET G-1 OR AS A MINIMUM TO MATCH EXIST'G. OTHERWISE.
4. REMOVE EXIST'G. CHAIN LINK FENCING AND GATE AND CONIC SLAB AS REQD. FOR NEW FOOTINGS AND TO HAVE A LEVEL FLOOR IN THIS AREA - COORD. IN THE FOUNDATION PLAN AND FLOOR PLAN - PATCH AND PREP ALL REMAINING SURFACES FOR NEW FINISHES OR AS A MINIMUM TO MATCH EXIST'G. OTHERWISE.
5. PREPARE FLOORS, WALLS AND CEILING FOR NEW FINISHES AS REQD. FOR NEW FINISHES OR AS A MINIMUM TO MATCH EXIST'G. OTHERWISE - REFER TO SHEET G-1 FOR FINISH SCHEDULE - TYPICAL NOTE.

WALL LEGEND



WALK'S EXXON - ADDITION
3221 W. US HIGHWAY 90
LAKE CITY, FLORIDA

Kail Partners
ARCHITECTURE & INTERIORS
AA23602308
Gainesville, Florida
352.333.3333
kail@kailpartners.com



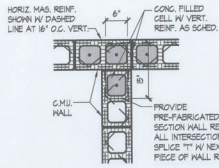
5/20/14

1418

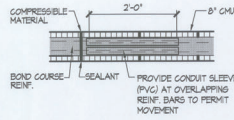
D-1

07 8
SHEETS

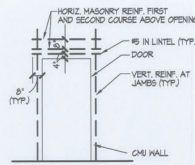
CONSTRUCTION DOCUMENTS



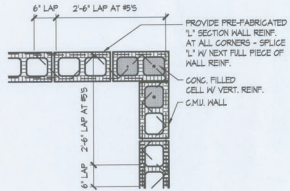
REIN. DETAIL AT CMU INTERSECTIONS
3/4" = 1'-0"



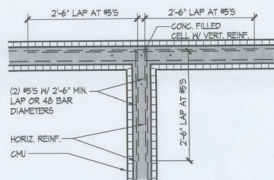
CONTROL JOINT DETAIL
3/4" = 1'-0"



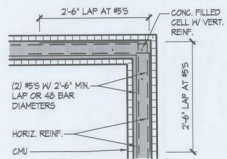
CMU REIN. DETAIL
1/4" = 1'-0"



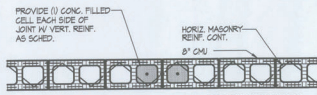
REIN. DETAIL AT CMU CORNERS
3/4" = 1'-0"



REIN. DETAIL AT CMU BOND BM. INTERSECTIONS
3/4" = 1'-0"



REIN. DETAIL AT CMU BOND BM. CORNERS
3/4" = 1'-0"



CONTROL JOINT DETAIL
3/4" = 1'-0"

LIFE SAFETY LEGEND

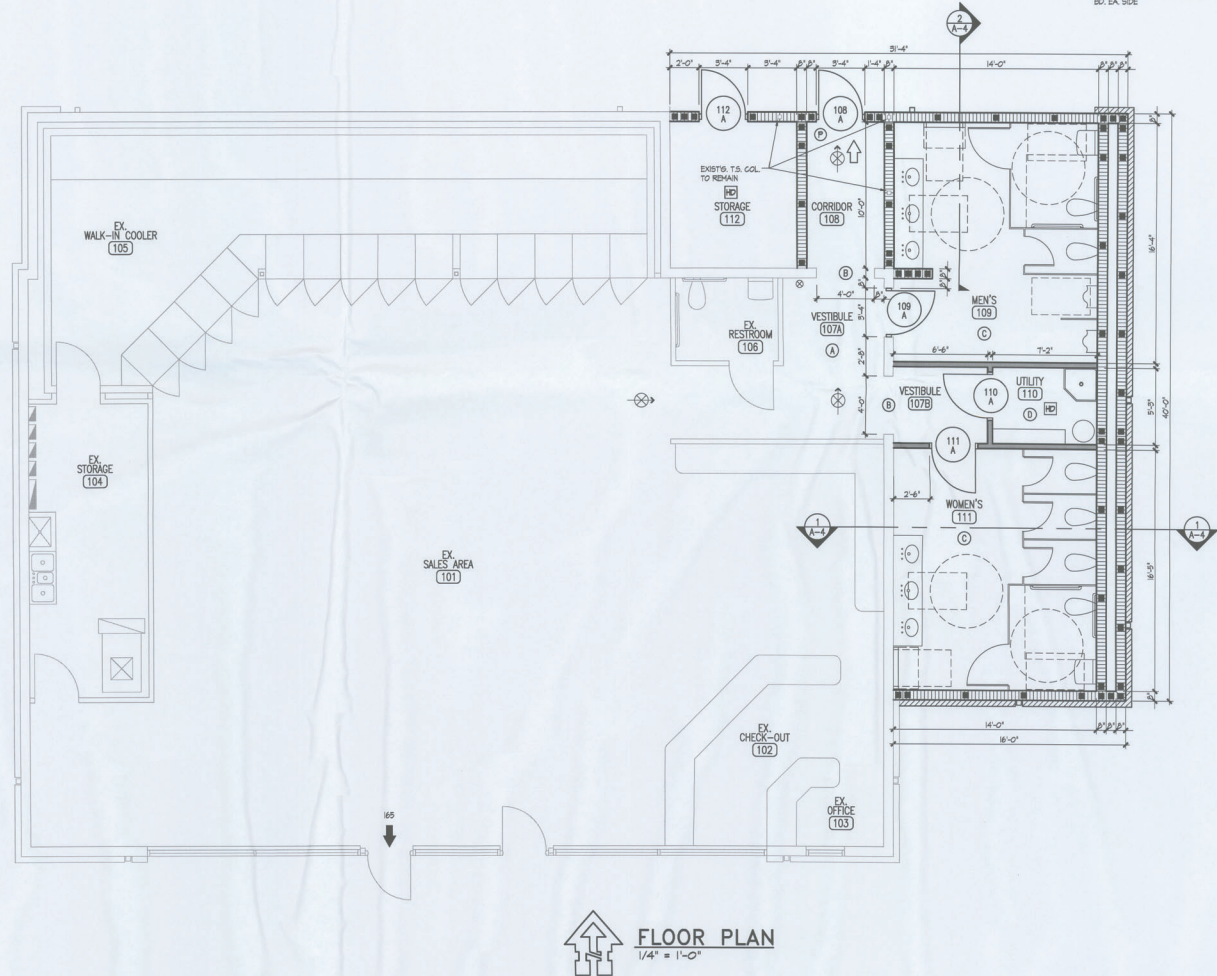
- EXIT LIGHT - ARROW REPRESENTS DIRECTION OF EXIT
- HEAT DETECTOR
- PANIC DEVICE
- HALL HANG FIRE EXTINGUISHER
- PRIMARY EGRESS W/ EXIT CAPACITY
- SECONDARY EGRESS

RENOVATION NOTES

- (A) NEW SELF-LEVELING FLOORING OVER EXISTING CONG. SLAB TO BRING SLOPED FLOORING LEVEL WITH MAIN FLOOR SLAB.
- (B) NEW 4'-0" WIDE X 7'-4" HIGH GASED OPENING IN EXISTING CMU WALL.
- (C) NEW PARTITIONS, FURNITURE, TOILET PAPER DISPENSERS, SOAP DISPENSERS, GRAB BARS, MIRRORS AND OTHER RESTROOM ACCESSORIES INSTALLED PER ADA COMPLIANCE - REFER TO DRAWINGS SHEET 6-1 FOR TYPICAL CLEARANCES AND DIMENSIONS.
- (D) NEW FLOOR MOUNTED MOP SINK WITH WALL MOUNTED MOP HOLDERS, WATER HEATER AND SHELVE.
- (E) REFER TO DRAWING SHEET 6-1 FOR DOOR SCHEDULE - TYPICAL NOTE.
- (F) REFER TO DRAWING SHEET 6-1 FOR FINISH SCHEDULE - TYPICAL NOTE.

WALL LEGEND

- EXISTING CMU WALL TO REMAIN
- NEW 8" CMU W/ HORIZ. HAS. REIN. AT 16" O.C. - CONG. FILLED CELLS W/ 16" VERT. REIN. AS SHOWN AND AT 4'-0" O.C. MAX. FOR EXTERIOR WALLS AND AT 8'-0" O.C. MAX. FOR INTERIOR WALLS - FORM IN ALL CELLS NOT FILLED W/ CONG. IN EXTERIOR WALLS AND BETWEEN CONDITIONED AND NON-CONDITIONED ROOMS
- NEW 8" CMU W/ HORIZ. HAS. REIN. AT 16" O.C. - CONG. FILLED CELLS W/ 16" VERT. REIN. AS SHOWN AND AT 4'-0" O.C. MAX. - BRICK VENEER W/ MASONRY TIES AT 16" O.C. AND MOP HOLES AND GRADE AT 32" O.C. FORM IN ALL CELLS NOT FILLED W/ CONG. IN EXTERIOR WALLS
- NEW 5'-0" X 20 GA. MTL. STUDS AT 16" O.C. W/ 5/8" MOISTURE RESISTANT GYP. BO. EA. SIDE



FLOOR PLAN
1/4" = 1'-0"

WALK'S EXXON - ADDITION
3221 W. US HIGHWAY 90
LAKE CITY, FLORIDA

Kail Partners
ARCHITECTURE & INTERIORS
KAIL PARTNERS
ARCHITECTURE & INTERIORS
333 S. 87th ST. #103
LAKE CITY, FLORIDA 33603

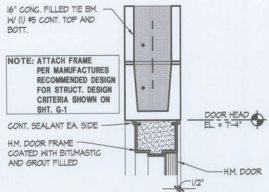


1418

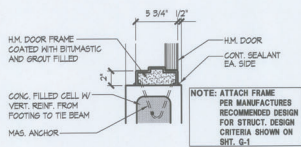
A-2

OF 8 SHEETS

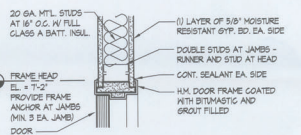
CONSTRUCTION DOCUMENTS



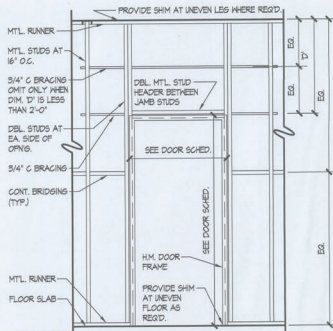
DOOR HEAD DETAIL
1 1/2" = 1'-0"



DOOR JAMB DETAIL
1 1/2" = 1'-0"

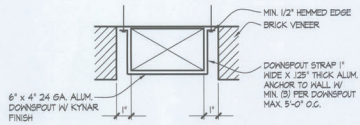


INTERIOR DOOR DETAIL
1 1/2" = 1'-0"

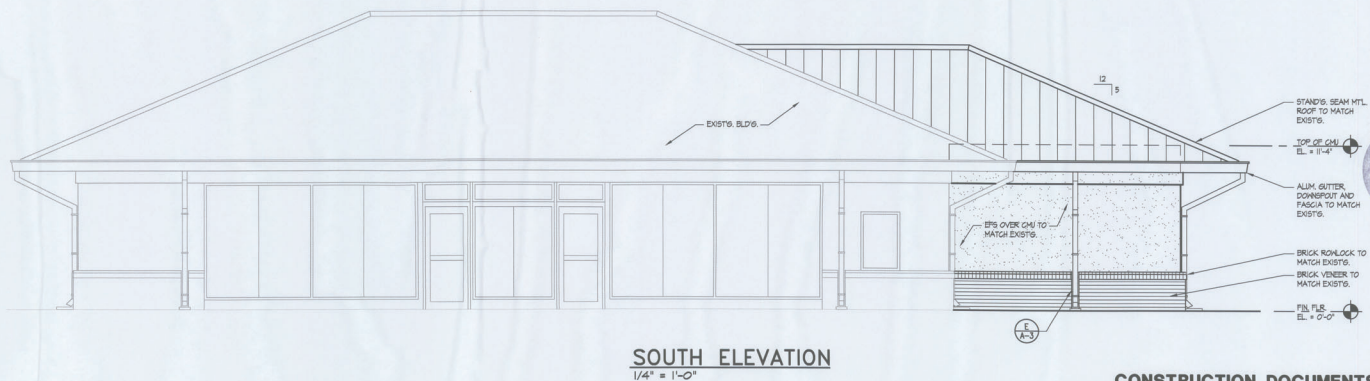
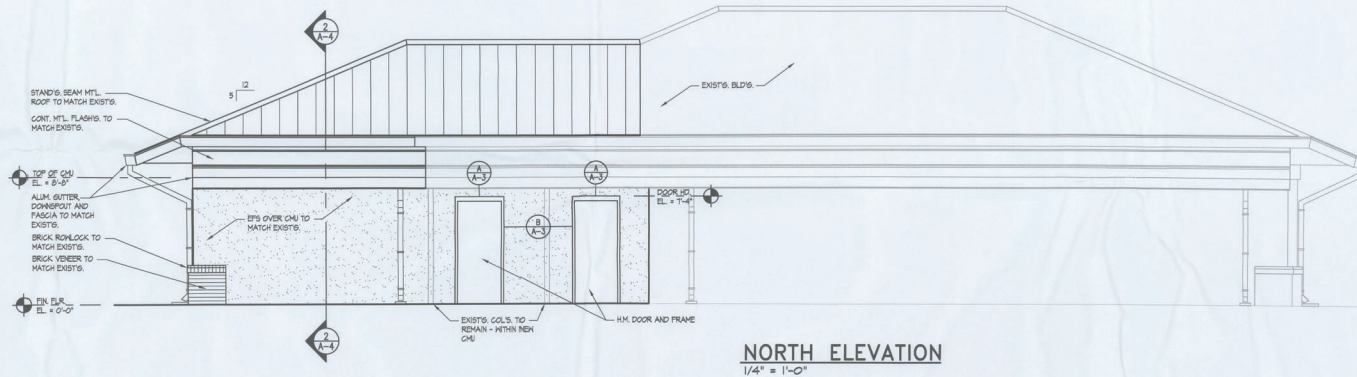
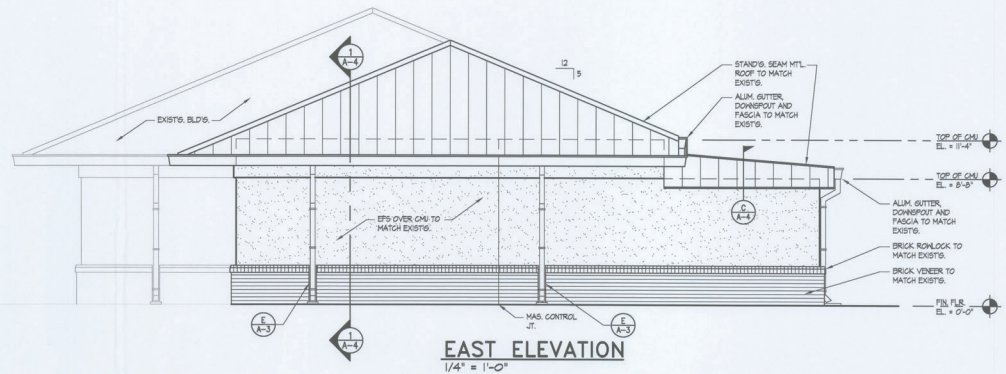


- NOTES:**
- ALL METAL STUDS AT FRAMES SHALL BE ANCHORED TOP AND BOTTOM.
 - ADD THIRD STUD AT EACH SIDE OF DOOR FRAME FOR DOORS THAT EXCEED 80 LBS. AND/OR OPENINGS MORE THAN 3'-6" WIDE.
 - STUD TRACK AT DOOR HEAD SHALL BE CUT, BENT AND FASTENED TO JAMB STUDS.

DOOR FRAMING DETAIL
NTS



DOWNSPOUT DETAIL
3" = 1'-0"



WALK'S EXXON - ADDITION
3221 W. US HIGHWAY 90
LAKE CITY, FLORIDA

Kail Partners
ARCHITECTURE & INTERIORS
A PROFESSIONAL SERVICE
312.8.771.4935
kail@kailpartners.com

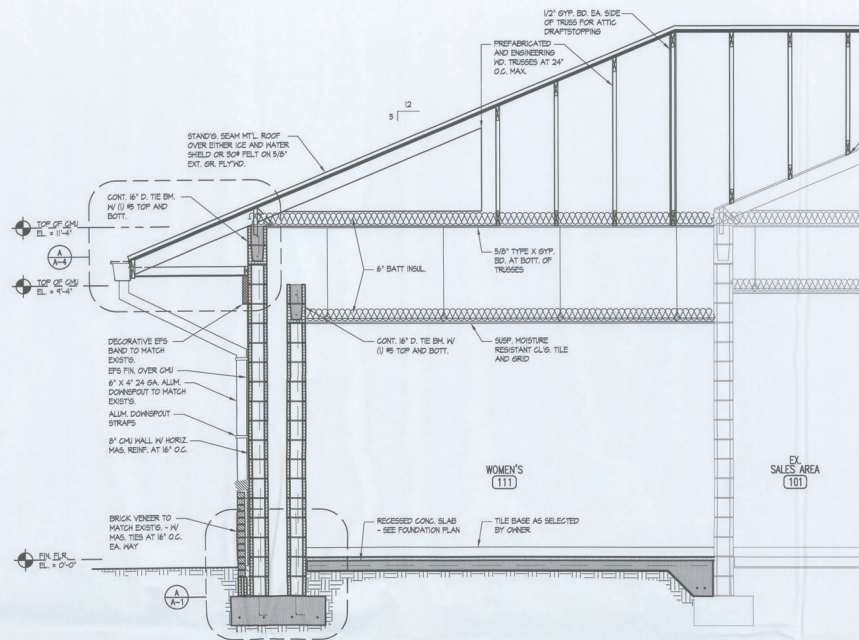


1418

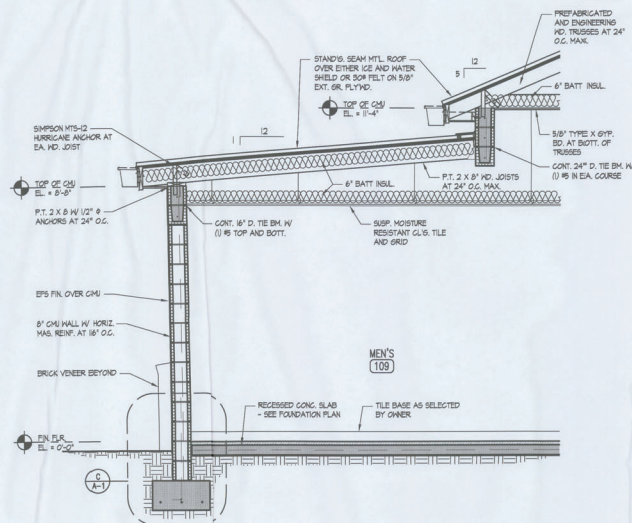
A-3

OF 8
SHEETS

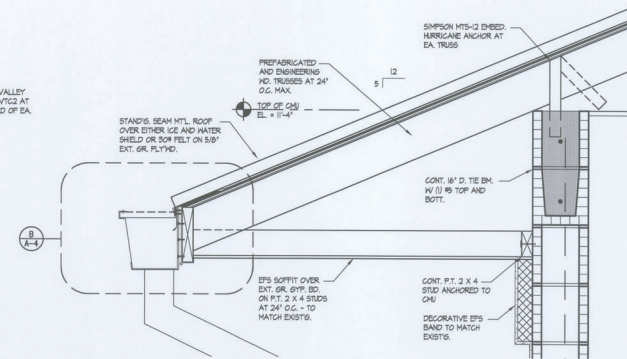
CONSTRUCTION DOCUMENTS



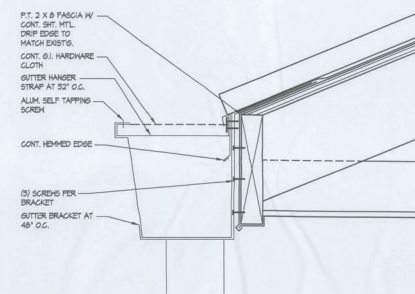
BUILDING SECTION
1/2" = 1'-0"



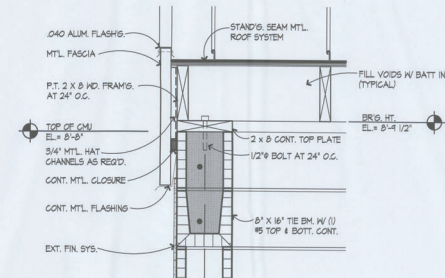
BUILDING SECTION
1/2" = 1'-0"



EAVE AND TRUSS BR'G. DETAIL
1 1/2" = 1'-0"



GUTTER DETAIL
3" = 1'-0"



RAKE DETAIL
1 1/2" = 1'-0"

WALK'S EXXON - ADDITION
3221 W. US HIGHWAY 90
LAKE CITY, FLORIDA

Kail Partners
ARCHITECTURE & INTERIORS
312-871-1493
dallas@kailpartners.com



1418

A-4

CONSTRUCTION DOCUMENTS

OF 8 SHEETS



ROOF PLAN
1/8" = 1'-0"



WIND DIAGRAM - NEW ROOF AREA
1/8" = 1'-0"

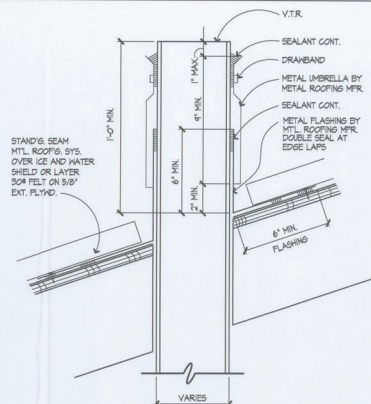
WLS COMPONENT AND CLADDING (P.S.F)				
SIZE (SF)	END ZONE		INTERIOR ZONE	
	POS. +	NEG. -	POS. +	NEG. -
0-20	25.9	54.7	25.9	28.1
20-50	24.7	52.4	24.7	26.9
50-100	23.2	24.5	23.2	25.4
> 100	22	26.9	22	24.2

NET UPLIFT

- ① - 23 PSF
② - 31 PSF
③ - 61 PSF

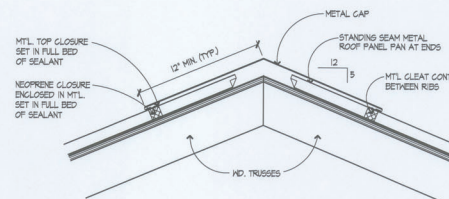
DESIGN GUIDELINES:

1. SEE SHT. G-1 FOR STRUCT
DESIGN CRITERIA



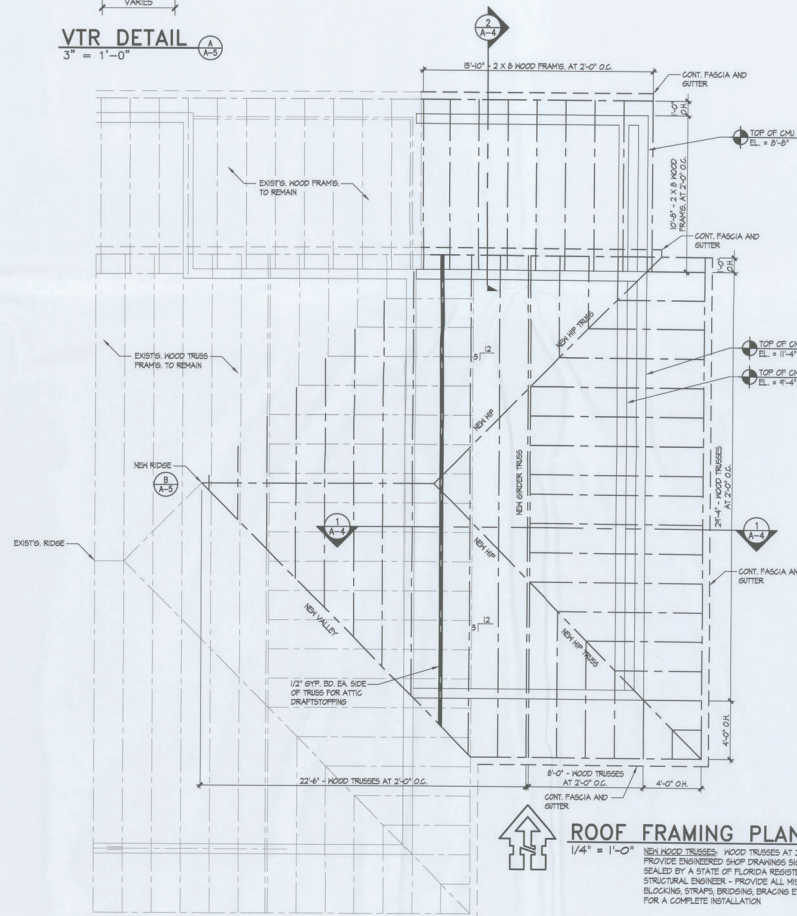
VTR DETAIL 

3" = 1'-0"



RIDGE DETAIL 

$1\ 1/2" = 1'-0"$

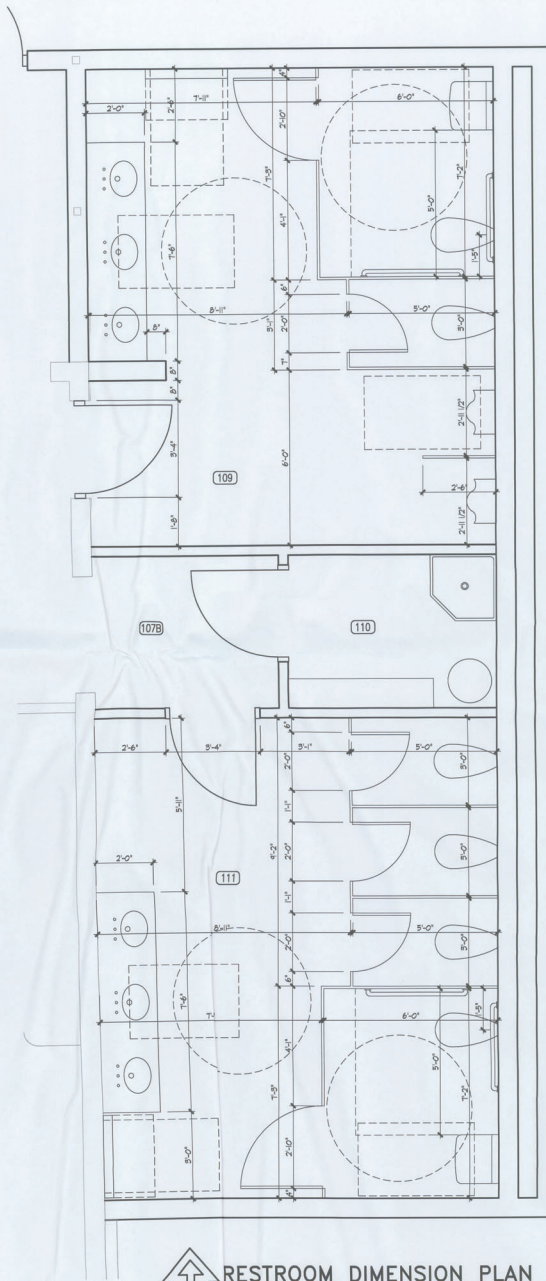


Δ ROOF FRAMING PLAN

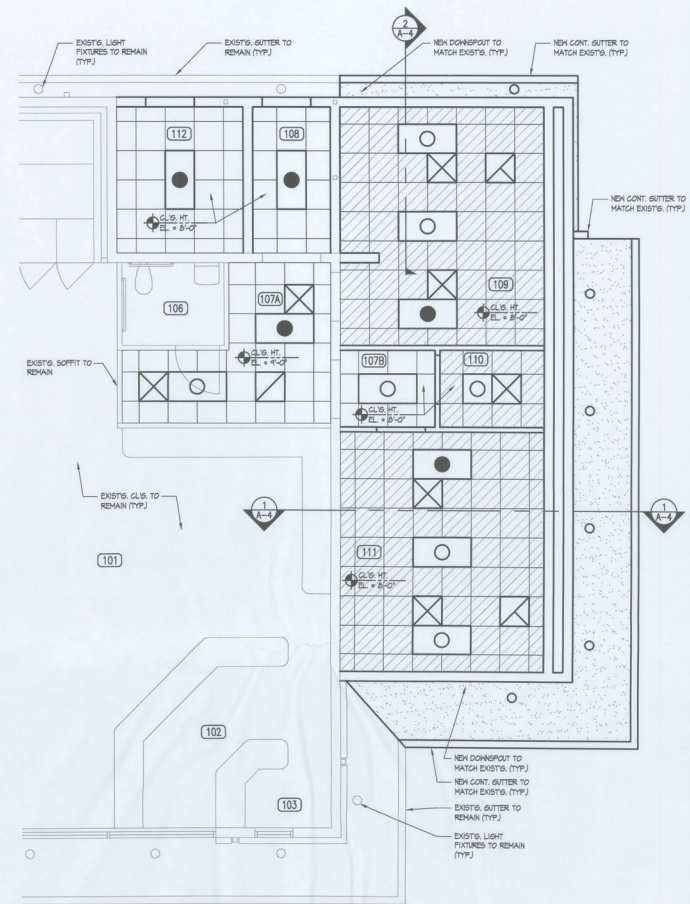
$$1/4^{\text{th}} = 1'-0$$

NEW WOOD TRUSSES: WOOD TRUSSES AT 2'-0" O.C. MAX. PROVIDE ENGINEERED SHOP DRAWINGS SIGNED AND SEALED BY A STATE OF FLORIDA REGISTERED STRUCTURAL ENGINEER - PROVIDE ALL MISCELLANEOUS BLOCKING, STRAPS, BRIDGING, BRACING ETC. AS REQ'D. FOR A COMPLETE INSTALLATION

CONSTRUCTION DOCUMENTS



RESTROOM DIMENSION PLAN
1/2" = 1'-0"



CEILING LEGEND

	NEW SUSPENDED ACOUSTICAL TILE CEILING SYSTEM		NEW LIGHT FIXTURE TO MATCH EXISTS
	NEW SUSPENDED ACOUSTICAL TILE CEILING SYSTEM - MOISTURE RESISTANT		NEW EMERGENCY LIGHT FIXTURE TO MATCH EXISTS
	EPS SOFFIT TO MATCH EXISTS - PROVIDE CONTROL JOINTS PER MANUF. RECOMMENDATIONS		NEW LIGHT FIXTURE TO MATCH EXISTS
			NEW SUPPLY AIR DIFFUSER
			NEW RETURN AIR GRILLE
			NEW EXHAUST



REFLECTED CEILING PLAN

1/4" = 1'-0"

GENERAL NOTES

1. AT NEW SUSPENDED CEILING, ALL SUSPENSION SYSTEMS, INCLUDING LIGHT FIXTURES, SHALL BE SUSPENDED FROM STRUCTURE ABOVE - LIGHT FIXTURES TO BE SUSPENDED SEPARATELY FROM GRID ON ALL CORNERS.
2. NEW AIR DIFFUSERS AND REGISTERS SHALL BE SUPPORTED BY THE SUSPENDED GRID WHICH SHALL BE SUPPORTED BY THE HIRE AT TWO DIAGONAL CORNERS MINIMUM AT EACH DIFFUSER. THE WIRES ATTACHED TO STRUCTURE ABOVE BY ACOUSTICAL CEILING INSTALLER AND FINAL CONNECTIONS TO DIFFUSERS AND REGISTERS BY THE MECHANICAL INSTALLER.
3. THE CEILING SUBCONTRACTOR SHALL PROVIDE AND INSTALL ALL THE TIE WIRE FOR THE CEILING GRID, MECHANICAL ITEMS AND LIGHT FIXTURES. THE MECHANICAL AND ELECTRICAL SUBCONTRACTORS SHALL MAKE THE FINAL CONNECTIONS OF THEIR RESPECTIVE ITEMS TO THE TIE WIRE AND CEILING GRID.
4. REPORT ANY CONFLICTS PRIOR TO ANY INSTALLATION.
5. REFER TO THE FLOOR PLAN FOR NEW EXIT LIGHTS.

CONSTRUCTION DOCUMENTS

WALK'S EXXON - ADDITION
3221 W. US HIGHWAY 90
LAKE CITY, FLORIDA



ARCHITECT
332-271-9933
kailpartners.com



1418

A-6

OF 8 SHEETS