

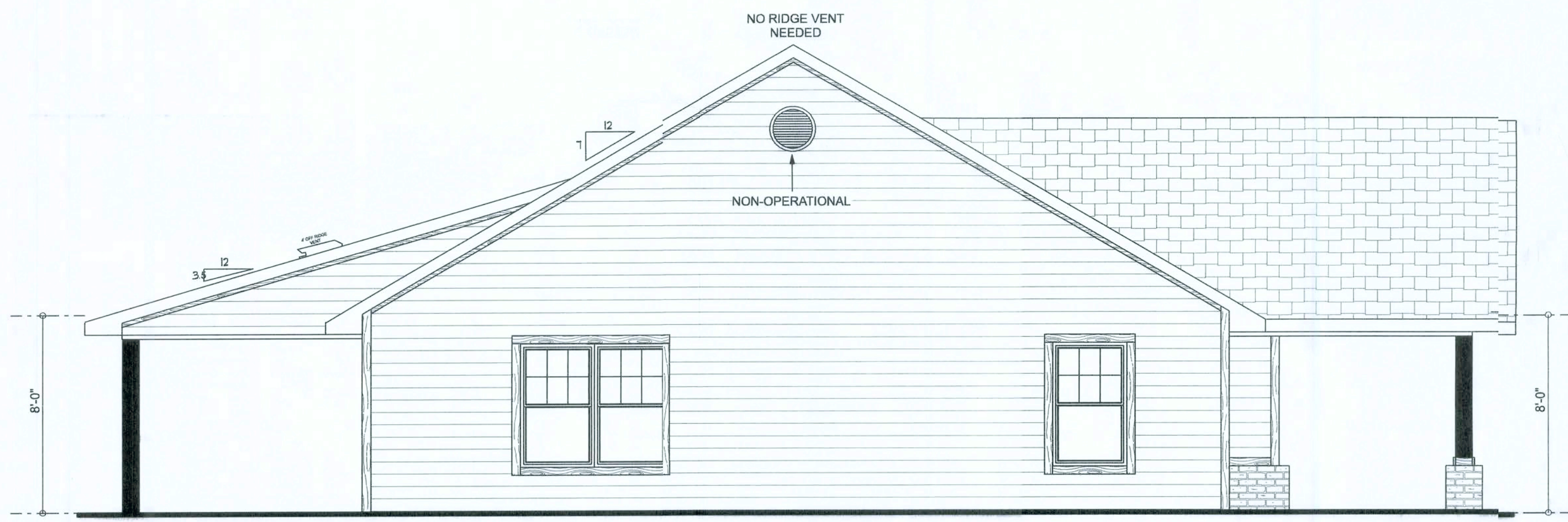
REVISIONS	

SCFTPLAN
ARCHITECTURAL DESIGN SOFTWARE

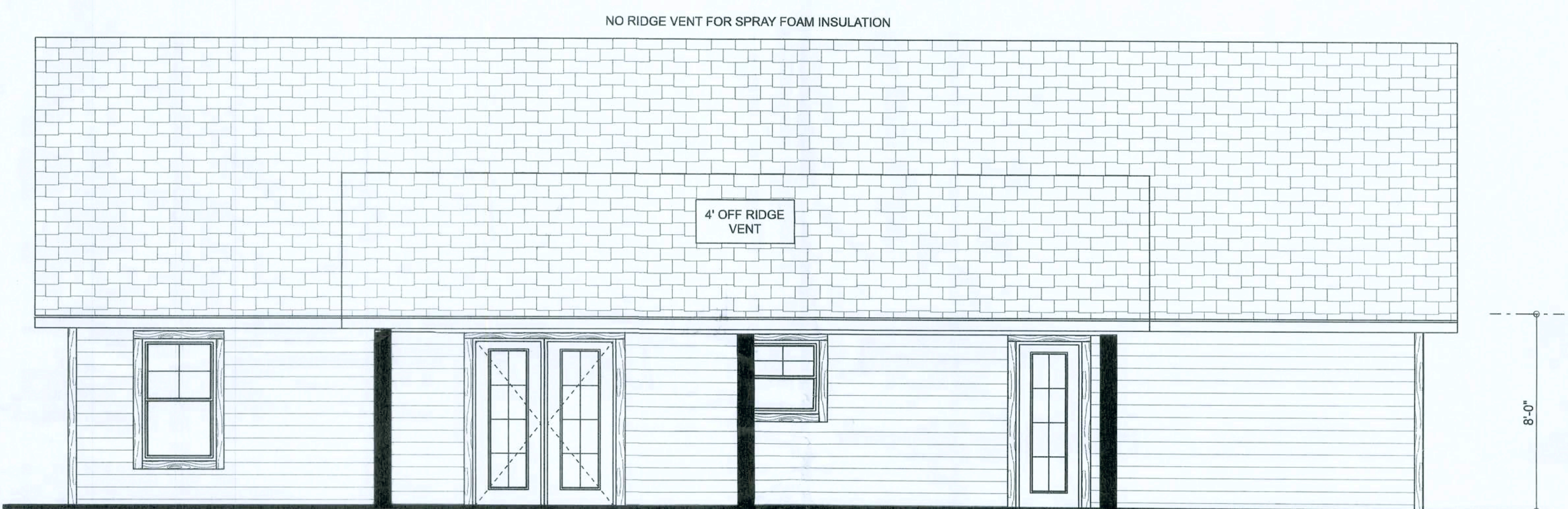


FRONT ELEVATION

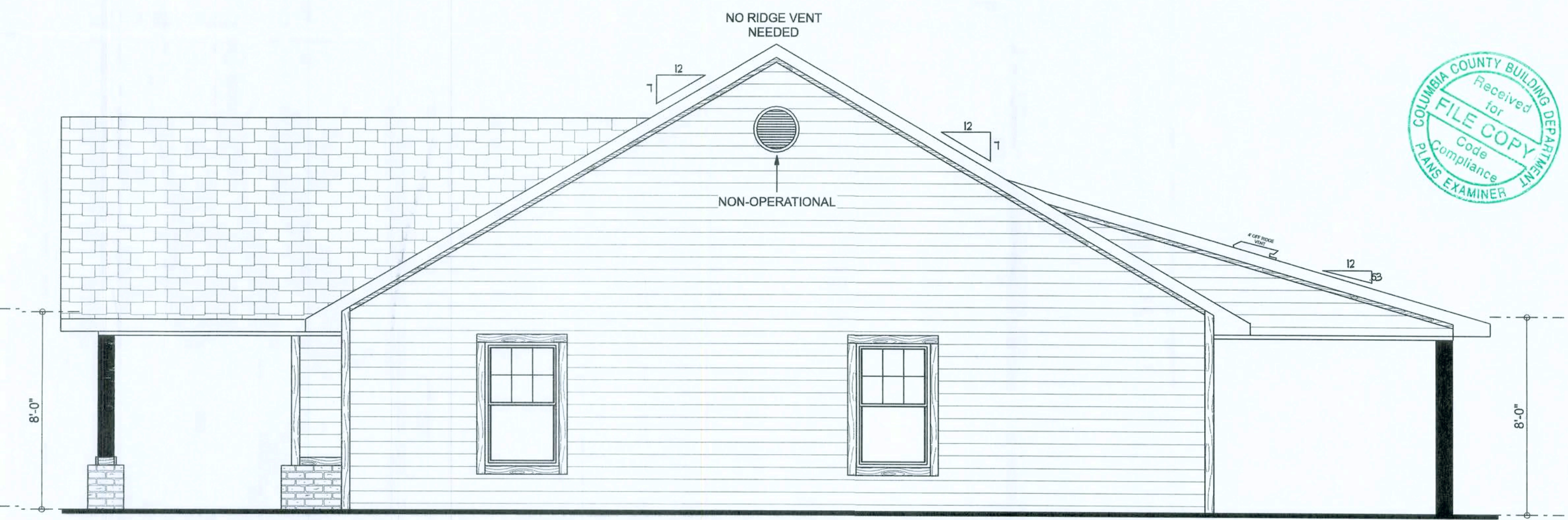
Thursday, February 6, 2020
08:34 AM



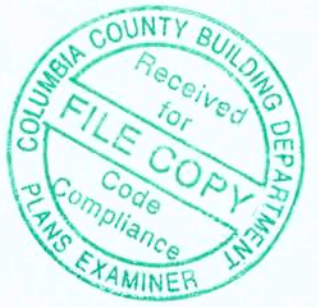
LEFT ELEVATION



REAR ELEVATION



RIGHT ELEVATION



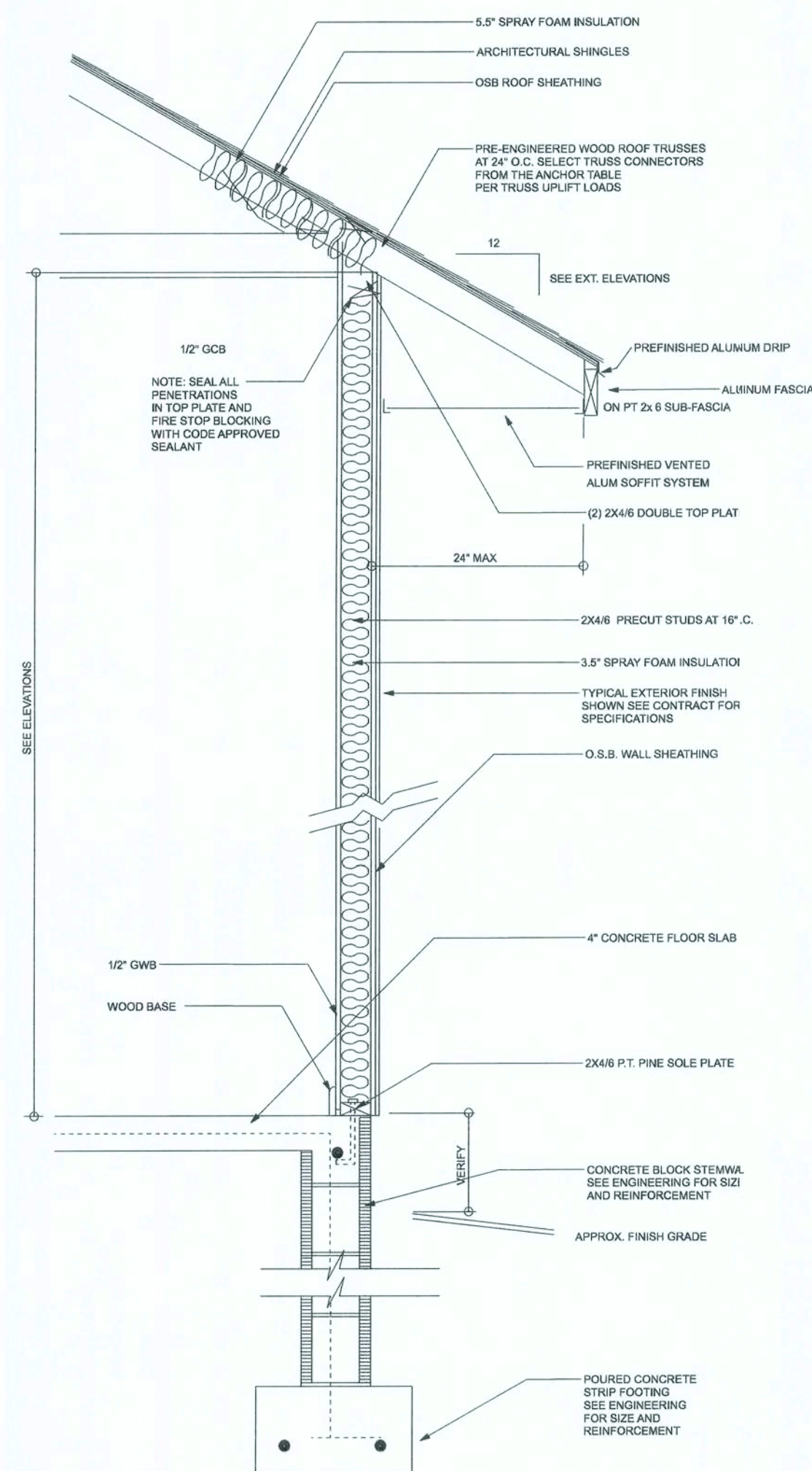
Erkinger Construction
Group
Tonyand C. Nicole
Robertson Residence
ADDRESS:
614 Press Ruth Way
Lale City, FL 32024
PARCEL ID#:
15-45-17-08356-004
Columbia County, FL

PRINTED DATE:
Thursday, February 6, 2020
DRAWN BY:
Matthew A. Erkinger Sr.
CHECKED BY:

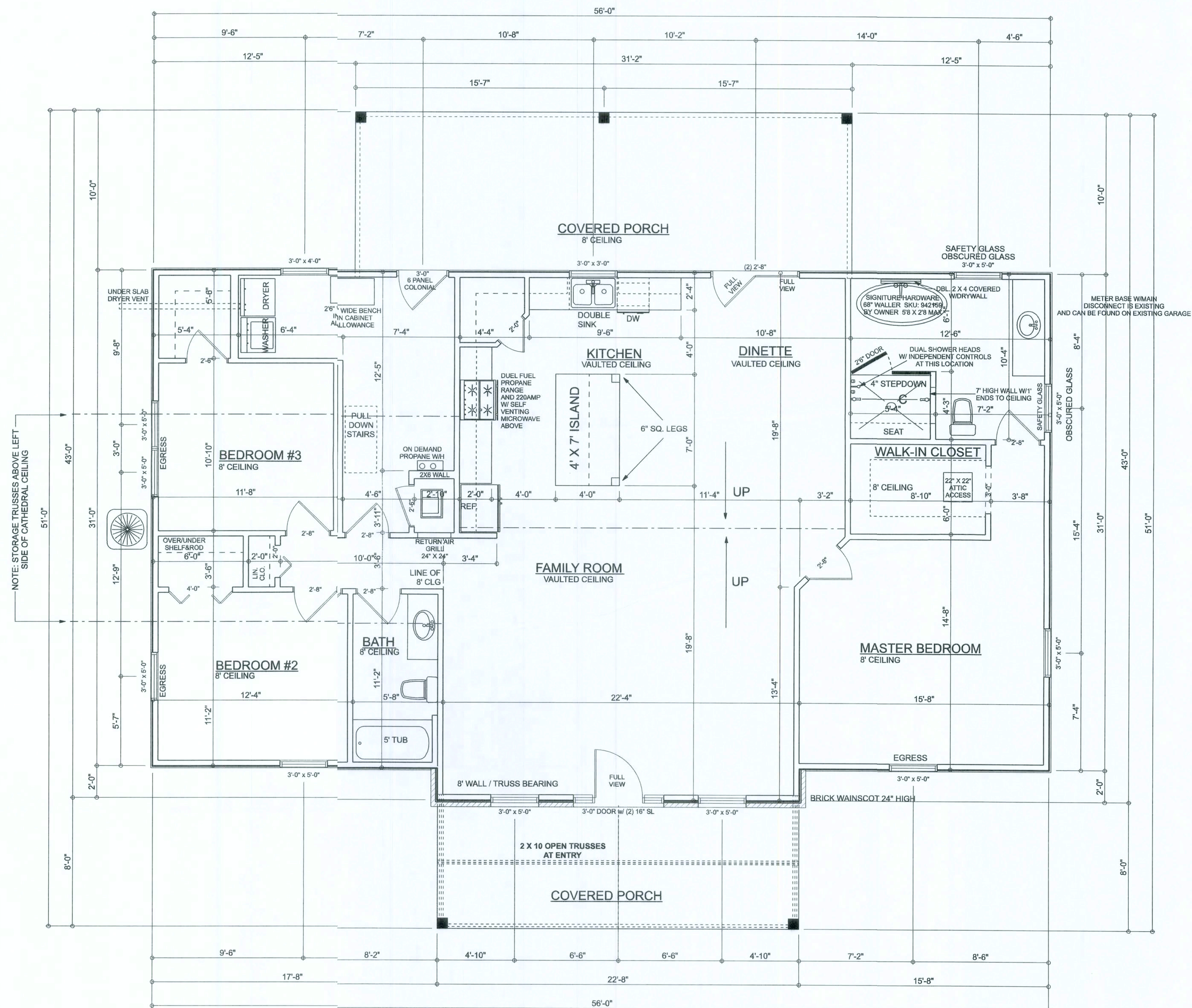
JOE NUMBER:
200164
DRAWING NUMBER
#1
OF 3 SHEETS

REVISIONS

SOFTPLAN
ARCHITECTURAL DESIGN SOFTWARE



TYPICAL DESIGN WALL SECTION
NON-STRUCTURAL DATA
SCALE: 1/4\"/>



FLOOR PLAN
SCALE: 1/4\"/>

AREA SUMMARY

LIVING AREA	1,807 S. F.
PORCH AREA	493 S. F.
TOTAL AREA	2,300 S. F.

Erkinger Construction
Group
Tony and C. Nicole
Robertson Residence

ADDRESS:
614 Pres Ruth Way
Lake City, FL 32024

PARTIAL ID#:
15-43-17-08356-004
Columbia County, FL

PRINTED DATE:
Thursday, February 6, 2020

DRAWN BY: CHECKED BY:
Matthew A. Erkinger S.

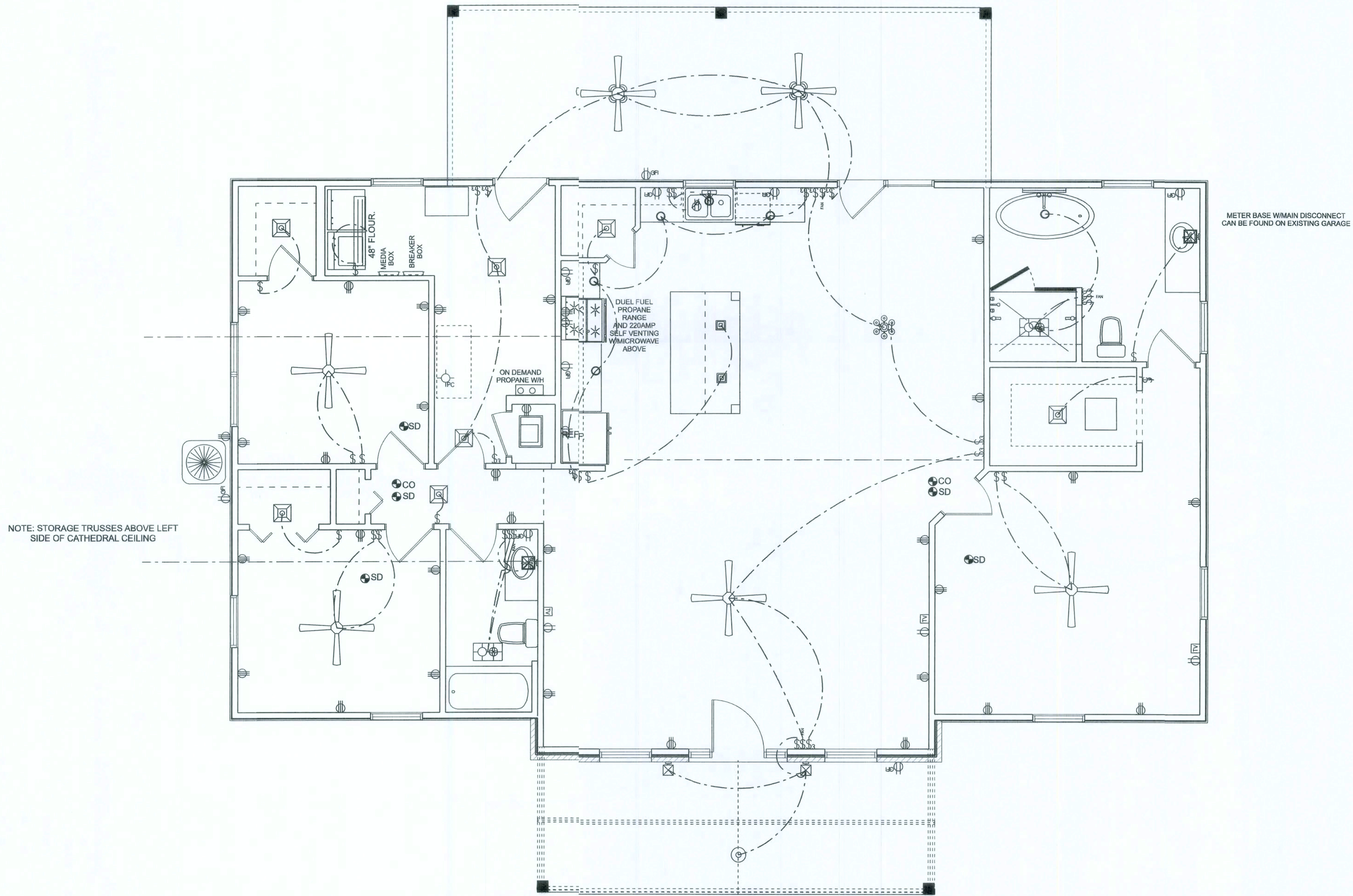
JOB NUMBER:
200164

DRAWING NUMBER

#2

OF 3 SHEETS

ELECTRICAL	SYMBOL
ceiling shade square	
pot light	
electrical panel	
pull chain light	
ceiling fan spotlights 1	
ceiling shade square	
exterior light 2	
vanity Lights	
ceiling globe light	
chandelier	
pendant large	
FLOURSCENT 2-48IN.	
Fan - Ceiling	
Fan Light - bathroom	
Light - Can	
cable tv outlet	
outlet	
outlet 220v	
outlet gfi	
switch	
switch 3 way	



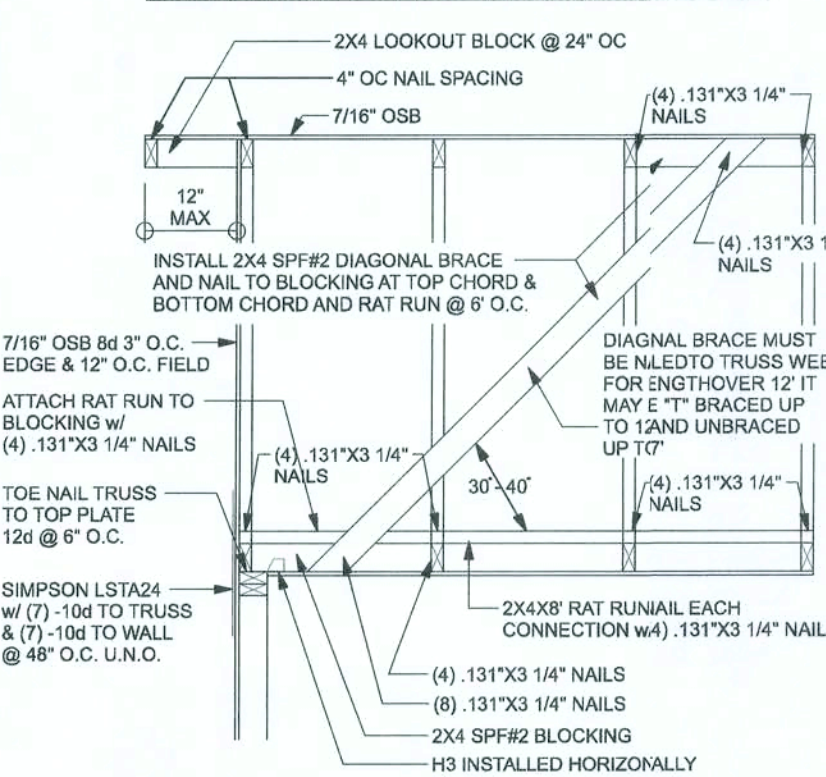
- RING-SHANK NAILS SHALL HAVE THE FOLLOWING MINIMUM DIMENSIONS:
- 0.113 INCH NOMINAL ROOF SHANK DIAMETER
 - RING DIAMETER OF 0.010 OVER SHANK DIAMETER
 - 16 TO 20 RINGS PER INCH
 - 0.280 INCH FULL ROUND HEAD DIAMETER
 - 2-3/8 INCH NAIL LENGTH

NAILING PATTERN SHALL BE:

- 4" OC GABLE END (SEE GABLE BRACING DETAIL)
- 6" OC @ EDGES ALL ZONES
- 6" OC @ INTERMEDIATE FRAMING IN ZONE 3
- 12" OC @ INTERMEDIATE FRAMING IN ZONE 1 & 2

ROOF SHEATHING FASTENING

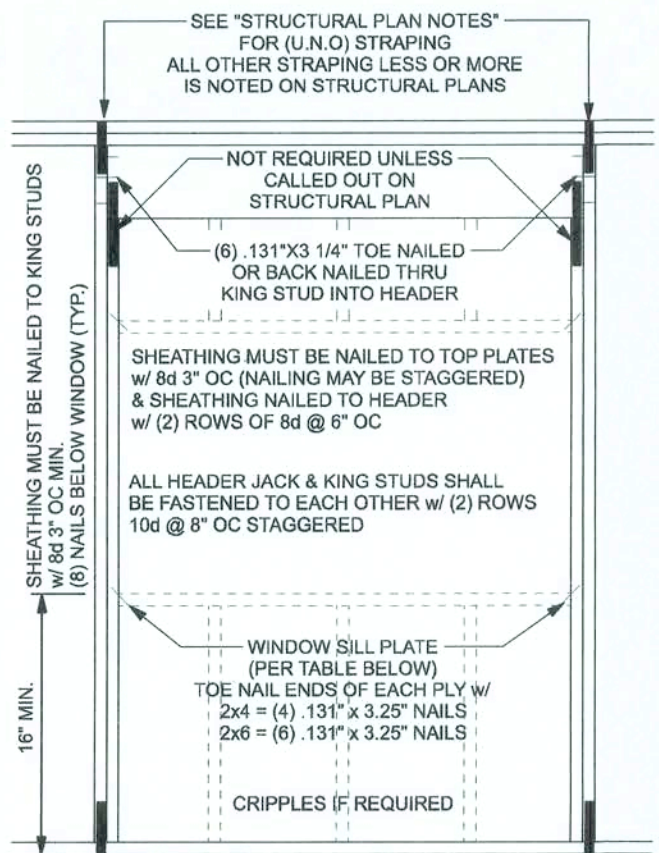
FOR OVERHANGES 12"-24" USE A DROPPED GABLE TRUS WITH 2X4 OUTLOOKER @ 24" O.C. w/ 10-SD TO GABLE TRUSS AND (4) 131"x 3.25" NAILS TO 2ND TRUSS (BLOCK BETWEEN OUTLOOKER)



SPACE RAT RUN & DIAGONAL BRACE 6"-0" O.C. FOR GABLE HEIGHT UP TO 25'-4" 130 MPH. EXP. C, ENCLOSED

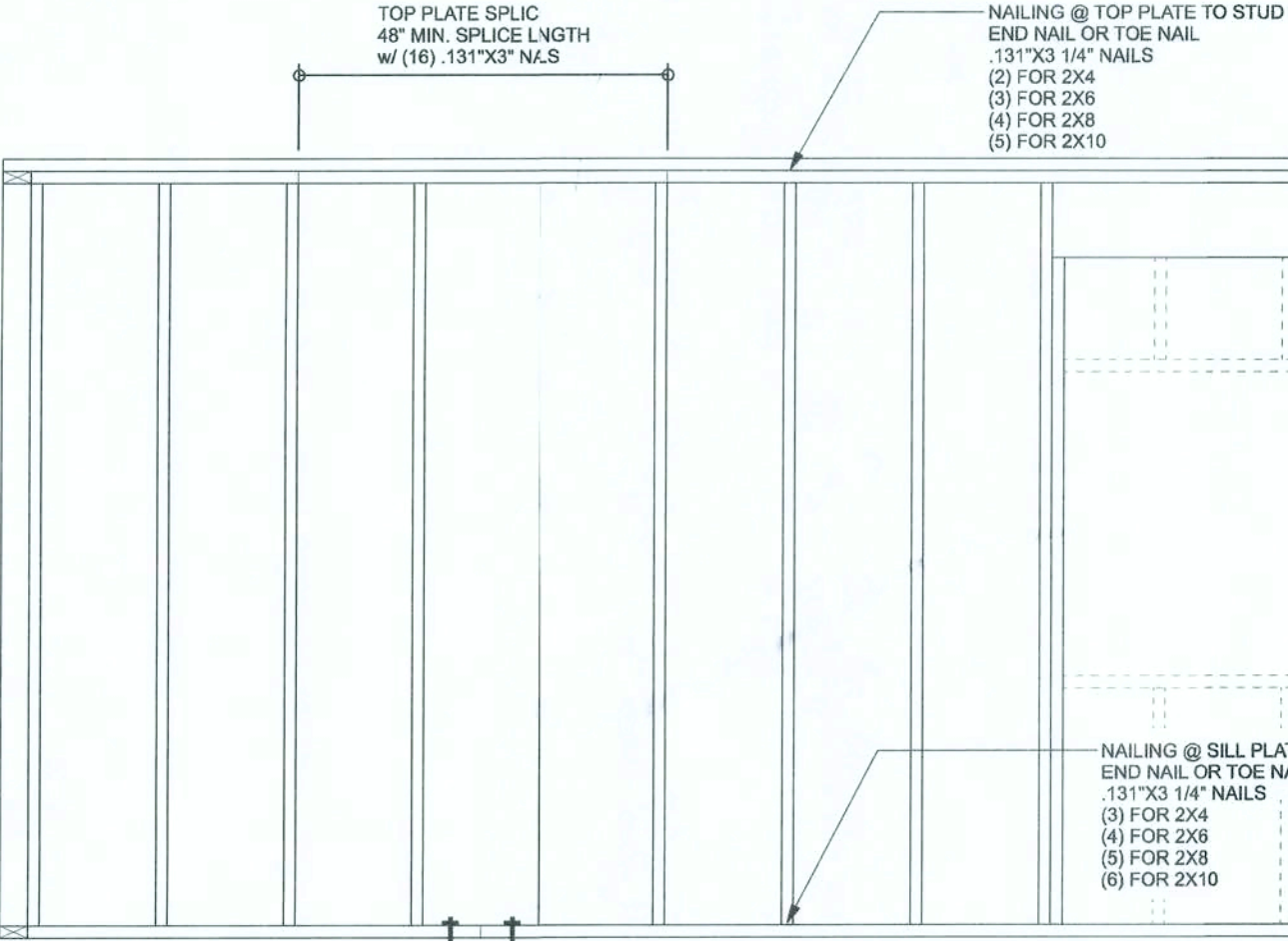
(TYP.) GABLE BRACING DETAIL

WOOD FRAME



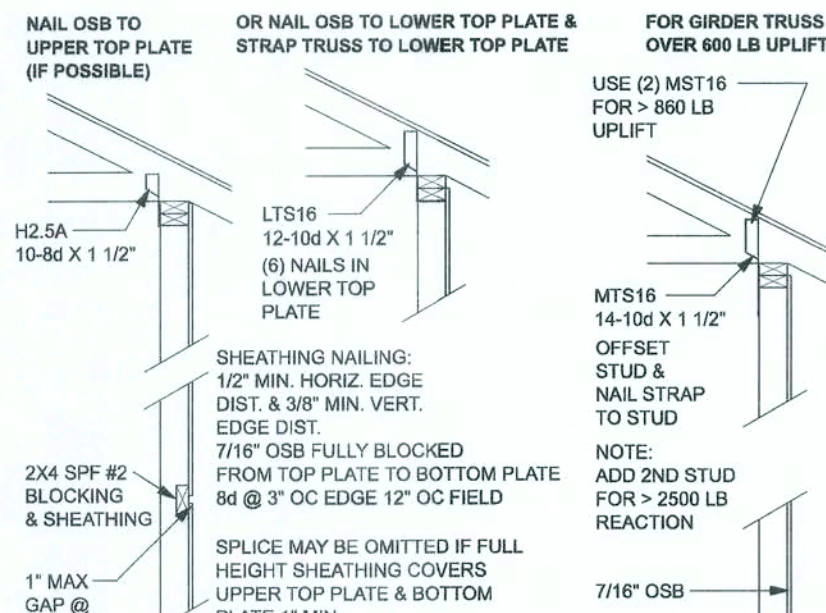
TYPICAL HEADER STRAPPING DETAIL

ONE STORY WOOD FRAME w/ STRAPS & ANCHORS



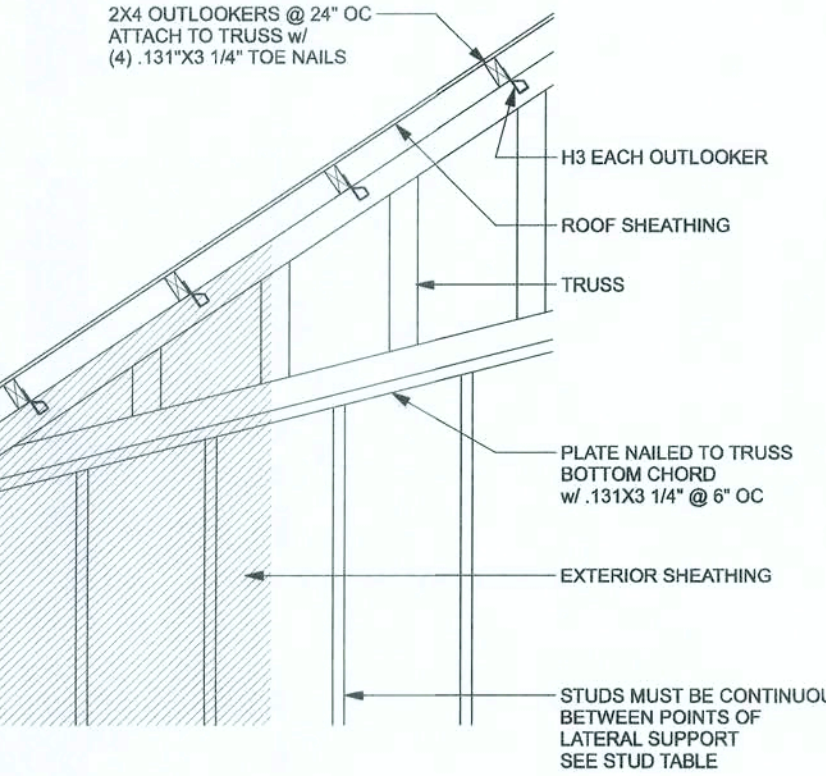
(TYP.) WALL CONNECTIONS

ONE STORY WOOD FRAME



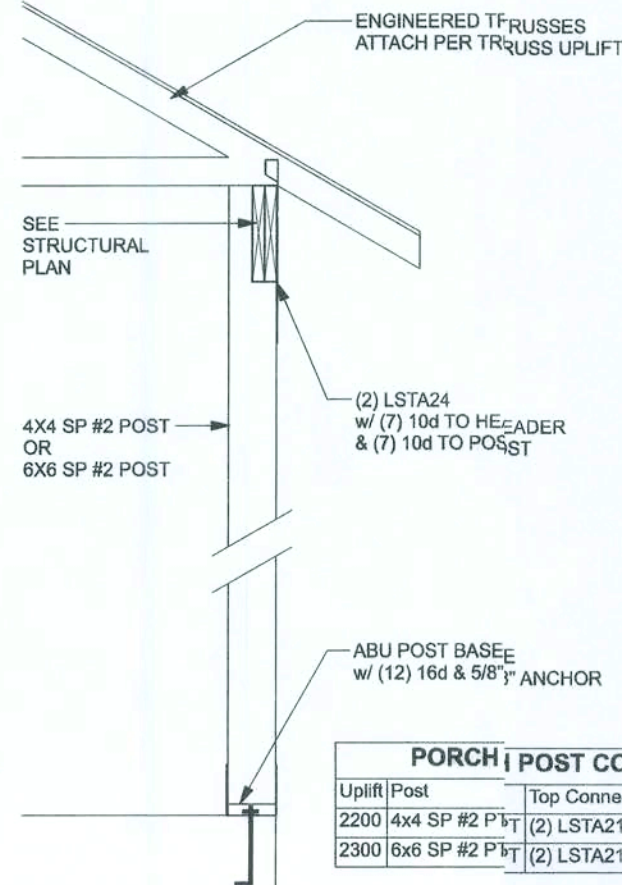
SHEATHING FOR UPLIFT ATTACHMENT DETAILS

ONE STORY WOOD FRAME



(TYP.) GABLE WALL w/ VAULTED CEILING

WOOD FRAME



(TYP.) PORCH POST

ONE STORY WOOD

OPTION: 1 (BUCKET)

OPTION: 2 (POCKETED)

NOTE: IF TRUSS TO BEAM STRAPS ARE NAILED TO BEAM LSTA24 ARE NOT REQUIRED

BEAM TO BEAR ON (2) 2X SP#2 JACKS

BEAM TO BEAR ON (2) 2X SP#2 JACKS

BEAM TO BEAR ON (2) 2X SP#2 JACKS

BEAM TO BEAR ON (2) 2X SP#2 JACKS

BEAM TO BEAR ON (2) 2X SP#2 JACKS

BEAM TO BEAR ON (2) 2X SP#2 JACKS

BEAM TO BEAR ON (2) 2X SP#2 JACKS

BEAM TO BEAR ON (2) 2X SP#2 JACKS

BEAM TO BEAR ON (2) 2X SP#2 JACKS

BEAM TO BEAR ON (2) 2X SP#2 JACKS

BEAM TO BEAR ON (2) 2X SP#2 JACKS

BEAM TO BEAR ON (2) 2X SP#2 JACKS

BEAM TO BEAR ON (2) 2X SP#2 JACKS

BEAM TO BEAR ON (2) 2X SP#2 JACKS

BEAM TO BEAR ON (2) 2X SP#2 JACKS

BEAM TO BEAR ON (2) 2X SP#2 JACKS

BEAM TO BEAR ON (2) 2X SP#2 JACKS

BEAM TO BEAR ON (2) 2X SP#2 JACKS

BEAM TO BEAR ON (2) 2X SP#2 JACKS

BEAM TO BEAR ON (2) 2X SP#2 JACKS

BEAM TO BEAR ON (2) 2X SP#2 JACKS

BEAM TO BEAR ON (2) 2X SP#2 JACKS

BEAM TO BEAR ON (2) 2X SP#2 JACKS

BEAM TO BEAR ON (2) 2X SP#2 JACKS

BEAM TO BEAR ON (2) 2X SP#2 JACKS

BEAM TO BEAR ON (2) 2X SP#2 JACKS

BEAM TO BEAR ON (2) 2X SP#2 JACKS

BEAM TO BEAR ON (2) 2X SP#2 JACKS

BEAM TO BEAR ON (2) 2X SP#2 JACKS

BEAM TO BEAR ON (2) 2X SP#2 JACKS

BEAM TO BEAR ON (2) 2X SP#2 JACKS

BEAM TO BEAR ON (2) 2X SP#2 JACKS

BEAM TO BEAR ON (2) 2X SP#2 JACKS

BEAM TO BEAR ON (2) 2X SP#2 JACKS

BEAM TO BEAR ON (2) 2X SP#2 JACKS

BEAM TO BEAR ON (2) 2X SP#2 JACKS

BEAM TO BEAR ON (2) 2X SP#2 JACKS

BEAM TO BEAR ON (2) 2X SP#2 JACKS

BEAM TO BEAR ON (2) 2X SP#2 JACKS

BEAM TO BEAR ON (2) 2X SP#2 JACKS

BEAM TO BEAR ON (2) 2X SP#2 JACKS

BEAM TO BEAR ON (2) 2X SP#2 JACKS

BEAM TO BEAR ON (2) 2X SP#2 JACKS

BEAM TO BEAR ON (2) 2X SP#2 JACKS

BEAM TO BEAR ON (2) 2X SP#2 JACKS

BEAM TO BEAR ON (2) 2X SP#2 JACKS

BEAM TO BEAR ON (2) 2X SP#2 JACKS

BEAM TO BEAR ON (2) 2X SP#2 JACKS

BEAM TO BEAR ON (2) 2X SP#2 JACKS

BEAM TO BEAR ON (2) 2X SP#2 JACKS

BEAM TO BEAR ON (2) 2X SP#2 JACKS

BEAM TO BEAR ON (2) 2X SP#2 JACKS

BEAM TO BEAR ON (2) 2X SP#2 JACKS

BEAM TO BEAR ON (2) 2X SP#2 JACKS

BEAM TO BEAR ON (2) 2X SP#2 JACKS

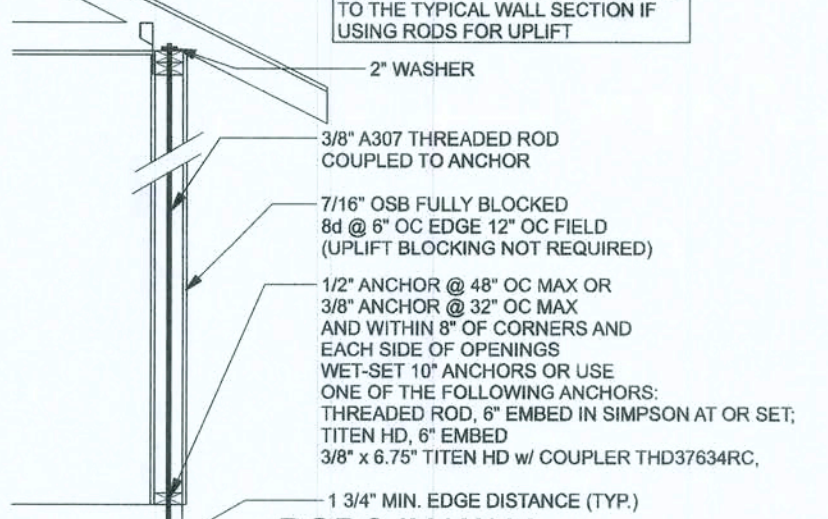
BEAM TO BEAR ON (2) 2X SP#2 JACKS

BEAM TO BEAR ON (2) 2X SP#2 JACKS

BEAM TO BEAR ON (2) 2X SP#2 JACKS

BEAM TO BEAR ON (2) 2X SP#2 JACKS

BEAM TO BEAR ON (2) 2X SP#2 JACKS



RODS AT OPENINGS FOR UPLIFT OPTION

THIS DETAIL SHOWS ONLY CHANGES TO THE TYPICAL WALL SECTION IF USING RODS FOR UPLIFT

THIS DETAIL SHOWS ONLY CHANGES TO THE TYPICAL WALL SECTION IF USING RODS FOR UPLIFT

THIS DETAIL SHOWS ONLY CHANGES TO THE TYPICAL WALL SECTION IF USING RODS FOR UPLIFT

THIS DETAIL SHOWS ONLY CHANGES TO THE TYPICAL WALL SECTION IF USING RODS FOR UPLIFT

THIS DETAIL SHOWS ONLY CHANGES TO THE TYPICAL WALL SECTION IF USING RODS FOR UPLIFT

THIS DETAIL SHOWS ONLY CHANGES TO THE TYPICAL WALL SECTION IF USING RODS FOR UPLIFT

THIS DETAIL SHOWS ONLY CHANGES TO THE TYPICAL WALL SECTION IF USING RODS FOR UPLIFT

THIS DETAIL SHOWS ONLY CHANGES TO THE TYPICAL WALL SECTION IF USING RODS FOR UPLIFT

THIS DETAIL SHOWS ONLY CHANGES TO THE TYPICAL WALL SECTION IF USING RODS FOR UPLIFT

THIS DETAIL SHOWS ONLY CHANGES TO THE TYPICAL WALL SECTION IF USING RODS FOR UPLIFT

THIS DETAIL SHOWS ONLY CHANGES TO THE TYPICAL WALL SECTION IF USING RODS FOR UPLIFT

THIS DETAIL SHOWS ONLY CHANGES TO THE TYPICAL WALL SECTION IF USING RODS FOR UPLIFT

THIS DETAIL SHOWS ONLY CHANGES TO THE TYPICAL WALL SECTION IF USING RODS FOR UPLIFT

THIS DETAIL SHOWS ONLY CHANGES TO THE TYPICAL WALL SECTION IF USING RODS FOR UPLIFT

THIS DETAIL SHOWS ONLY CHANGES TO THE TYPICAL WALL SECTION IF USING RODS FOR UPLIFT

THIS DETAIL SHOWS ONLY CHANGES TO THE TYPICAL WALL SECTION IF USING RODS FOR UPLIFT

THIS DETAIL SHOWS ONLY CHANGES TO THE TYPICAL WALL SECTION IF USING RODS FOR UPLIFT

THIS DETAIL SHOWS ONLY CHANGES TO THE TYPICAL WALL SECTION IF USING RODS FOR UPLIFT

THIS DETAIL SHOWS ONLY CHANGES TO THE TYPICAL WALL SECTION IF USING RODS FOR UPLIFT

THIS DETAIL SHOWS ONLY CHANGES TO THE TYPICAL WALL SECTION IF USING RODS FOR UPLIFT

THIS DETAIL SHOWS ONLY CHANGES TO THE TYPICAL WALL SECTION IF USING RODS FOR UPLIFT

THIS DETAIL SHOWS ONLY CHANGES TO THE TYPICAL WALL SECTION IF USING RODS FOR UPLIFT

THIS DETAIL SHOWS ONLY CHANGES TO THE TYPICAL WALL SECTION IF USING RODS FOR UPLIFT

THIS DETAIL SHOWS ONLY CHANGES TO THE TYPICAL WALL SECTION IF USING RODS FOR UPLIFT

THIS DETAIL SHOWS ONLY CHANGES TO THE TYPICAL WALL SECTION IF USING RODS FOR UPLIFT

THIS DETAIL SHOWS ONLY CHANGES TO THE TYPICAL WALL SECTION IF USING RODS FOR UPLIFT

THIS DETAIL SHOWS ONLY CHANGES TO THE TYPICAL WALL SECTION IF USING RODS FOR UPLIFT

THIS DETAIL SHOWS ONLY CHANGES TO THE TYPICAL WALL SECTION IF USING RODS FOR UPLIFT

THIS DETAIL SHOWS ONLY CHANGES TO THE TYPICAL WALL SECTION IF USING RODS FOR UPLIFT

THIS DETAIL SHOWS ONLY CHANGES TO THE TYPICAL WALL SECTION IF USING RODS FOR UPLIFT

THIS DETAIL SHOWS ONLY CHANGES TO THE TYPICAL WALL SECTION IF USING RODS FOR UPLIFT

THIS DETAIL SHOWS ONLY CHANGES TO THE TYPICAL WALL SECTION IF USING RODS FOR UPLIFT

THIS DETAIL SHOWS ONLY CHANGES TO THE TYPICAL WALL SECTION IF USING RODS FOR UPLIFT

THIS DETAIL SHOWS ONLY CHANGES TO THE TYPICAL WALL SECTION IF USING RODS FOR UPLIFT

THIS DETAIL SHOWS ONLY CHANGES TO THE TYPICAL WALL SECTION IF USING RODS FOR UPLIFT

THIS DETAIL SHOWS ONLY CHANGES TO THE TYPICAL WALL SECTION IF USING RODS FOR UPLIFT

THIS DETAIL SHOWS ONLY CHANGES TO THE TYPICAL WALL SECTION IF USING RODS FOR UPLIFT

THIS DETAIL SHOWS ONLY CHANGES TO THE TYPICAL WALL SECTION IF USING RODS FOR UPLIFT

THIS DETAIL SHOWS ONLY CHANGES TO THE TYPICAL WALL SECTION IF USING RODS FOR UPLIFT

THIS DETAIL SHOWS ONLY CHANGES TO THE TYPICAL WALL SECTION IF USING RODS FOR UPLIFT

THIS DETAIL SHOWS ONLY CHANGES TO THE TYPICAL WALL SECTION IF USING RODS FOR UPLIFT

THIS DETAIL SHOWS ONLY CHANGES TO THE TYPICAL WALL SECTION IF USING RODS FOR UPLIFT

THIS DETAIL SHOWS ONLY CHANGES TO THE TYPICAL WALL SECTION IF USING RODS FOR UPLIFT

THIS DETAIL SHOWS ONLY CHANGES TO THE TYPICAL WALL SECTION IF USING RODS FOR UPLIFT

THIS DETAIL SHOWS ONLY CHANGES TO THE TYPICAL WALL SECTION IF USING RODS FOR UPLIFT

THIS DETAIL SHOWS ONLY CHANGES TO THE TYPICAL WALL SECTION IF USING RODS FOR UPLIFT

THIS DETAIL SHOWS ONLY CHANGES TO THE TYPICAL WALL SECTION IF USING RODS FOR UPLIFT

THIS DETAIL SHOWS ONLY CHANGES TO THE TYPICAL WALL SECTION IF USING RODS FOR UPLIFT

THIS DETAIL SHOWS ONLY CHANGES TO THE TYPICAL WALL SECTION IF USING RODS FOR UPLIFT

THIS DETAIL SHOWS ONLY CHANGES TO THE TYPICAL WALL SECTION IF USING RODS FOR UPLIFT

THIS DETAIL SHOWS ONLY CHANGES TO THE TYPICAL WALL SECTION IF USING RODS FOR UPLIFT

THIS DETAIL SHOWS ONLY CHANGES TO THE TYPICAL WALL SECTION IF USING RODS FOR UPLIFT

THIS DETAIL SHOWS ONLY CHANGES TO THE TYPICAL WALL SECTION IF USING RODS FOR UPLIFT

THIS DETAIL SHOWS ONLY CHANGES TO THE TYPICAL WALL SECTION IF USING RODS FOR UPLIFT

THIS DETAIL SHOWS ONLY CHANGES TO THE TYPICAL WALL SECTION IF USING RODS FOR UPLIFT

THIS DETAIL SHOWS ONLY CHANGES TO THE TYPICAL WALL SECTION IF USING RODS FOR UPLIFT

THIS DETAIL SHOWS ONLY CHANGES TO THE TYPICAL WALL SECTION IF USING RODS FOR UPLIFT

THIS DETAIL SHOWS ONLY CHANGES TO THE TYPICAL WALL SECTION IF USING RODS FOR UPLIFT

THIS DETAIL SHOWS ONLY CHANGES TO THE TYPICAL WALL SECTION IF USING RODS FOR UPLIFT

THIS DETAIL SHOWS ONLY CHANGES TO THE TYPICAL WALL SECTION IF USING RODS FOR UPLIFT

THIS DETAIL SHOWS ONLY CHANGES TO THE TYPICAL WALL SECTION IF USING RODS FOR UPLIFT

THIS DETAIL SHOWS ONLY CHANGES TO THE TYPICAL WALL SECTION IF USING RODS FOR UPLIFT

THIS DETAIL SHOWS ONLY CHANGES TO THE TYPICAL WALL SECTION IF USING RODS FOR UPLIFT

THIS DETAIL SHOWS ONLY CHANGES TO THE TYPICAL WALL SECTION IF USING RODS FOR UPLIFT

THIS DETAIL SHOWS ONLY CHANGES TO THE TYPICAL WALL SECTION IF USING RODS FOR UPLIFT

THIS DETAIL SHOWS ONLY CHANGES TO THE TYPICAL WALL SECTION IF USING RODS FOR UPLIFT

THIS DETAIL SHOWS ONLY CHANGES TO THE TYPICAL WALL SECTION IF USING RODS FOR UPLIFT

THIS DETAIL SHOWS ONLY CHANGES TO THE TYPICAL WALL SECTION IF USING RODS FOR UPLIFT

THIS DETAIL SHOWS ONLY CHANGES TO THE TYPICAL WALL SECTION IF USING RODS FOR UPLIFT

THIS DETAIL SHOWS ONLY CHANGES TO THE TYPICAL WALL SECTION IF USING RODS FOR UPLIFT

THIS DETAIL SHOWS ONLY CHANGES TO THE TYPICAL WALL SECTION IF USING RODS FOR UPLIFT

THIS DETAIL SHOWS ONLY CHANGES TO THE TYPICAL WALL SECTION IF USING RODS FOR UPLIFT

THIS DETAIL SHOWS ONLY CHANGES TO THE TYPICAL WALL SECTION IF USING RODS FOR UPLIFT

THIS DETAIL SHOWS ONLY CHANGES TO THE TYPICAL WALL SECTION IF USING RODS FOR UPLIFT

THIS DETAIL SHOWS ONLY CHANGES TO THE TYPICAL WALL SECTION IF USING RODS FOR UPLIFT

THIS DETAIL SHOWS ONLY CHANGES TO THE TYPICAL WALL SECTION IF USING RODS FOR UPLIFT

THIS DETAIL SHOWS ONLY CHANGES TO THE TYPICAL WALL SECTION IF USING RODS FOR UPLIFT

THIS DETAIL SHOWS ONLY CHANGES TO THE TYPICAL WALL SECTION IF USING RODS FOR UPLIFT

THIS DETAIL SHOWS ONLY CHANGES TO THE TYPICAL WALL SECTION IF USING RODS FOR UPLIFT

THIS DETAIL SHOWS ONLY CHANGES TO THE TYPICAL WALL SECTION IF USING RODS FOR UPLIFT

THIS DETAIL SHOWS ONLY CHANGES TO THE TYPICAL WALL SECTION IF USING RODS FOR UPLIFT

THIS DETAIL SHOWS ONLY CHANGES TO THE TYPICAL WALL SECTION IF USING RODS FOR UPLIFT

THIS DETAIL SHOWS ONLY CHANGES TO THE TYPICAL WALL SECTION IF USING RODS FOR UPLIFT

THIS DETAIL SHOWS ONLY CHANGES TO THE TYPICAL WALL SECTION IF USING RODS FOR UPLIFT

THIS DETAIL SHOWS ONLY CHANGES TO THE TYPICAL WALL SECTION IF USING RODS FOR UPLIFT

THIS DETAIL SHOWS ONLY CHANGES TO THE TYPICAL WALL SECTION IF USING RODS FOR UPLIFT

THIS DETAIL SHOWS ONLY CHANGES TO THE TYPICAL WALL SECTION IF USING RODS FOR UPLIFT

THIS DETAIL SHOWS ONLY CHANGES TO THE TYPICAL WALL SECTION IF USING RODS FOR UPLIFT

THIS DETAIL SHOWS ONLY CHANGES TO THE TYPICAL WALL SECTION IF USING RODS FOR UPLIFT

THIS DETAIL SHOWS ONLY CHANGES TO THE TYPICAL WALL SECTION IF USING RODS FOR UPLIFT

THIS DETAIL SHOWS ONLY CHANGES TO THE TYPICAL WALL SECTION IF USING RODS FOR UPLIFT

THIS DETAIL SHOWS ONLY CHANGES TO THE TYPICAL WALL SECTION IF USING RODS FOR UPLIFT

THIS DETAIL SHOWS ONLY CHANGES TO THE TYPICAL WALL SECTION IF USING RODS FOR UPLIFT

THIS DETAIL SHOWS ONLY CHANGES TO THE TYPICAL WALL SECTION IF USING RODS FOR UPLIFT

THIS DETAIL SHOWS ONLY CHANGES TO THE TYPICAL WALL SECTION IF USING RODS FOR UPLIFT

THIS DETAIL SHOWS ONLY CHANGES TO THE TYPICAL WALL SECTION IF USING RODS FOR UPLIFT

THIS DETAIL SHOWS ONLY CHANGES TO THE TYPICAL WALL SECTION IF USING RODS FOR UPLIFT

THIS DETAIL SHOWS ONLY CHANGES TO THE TYPICAL WALL SECTION IF USING RODS FOR UPLIFT

THIS DETAIL SHOWS ONLY CHANGES TO THE TYPICAL WALL SECTION IF USING RODS FOR UPLIFT

THIS DETAIL SHOWS ONLY CHANGES TO THE TYPICAL WALL SECTION IF USING RODS FOR UPLIFT

THIS DETAIL SHOWS ONLY CHANGES TO THE TYPICAL WALL SECTION IF USING RODS FOR UPLIFT

THIS DETAIL SHOWS ONLY CHANGES TO THE TYPICAL WALL SECTION IF USING RODS FOR UPLIFT

THIS DETAIL SHOWS ONLY CHANGES TO THE TYPICAL WALL SECTION IF USING RODS FOR UPLIFT

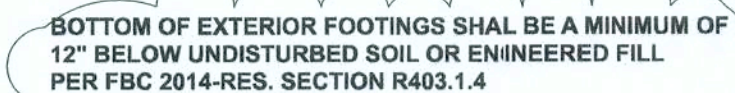
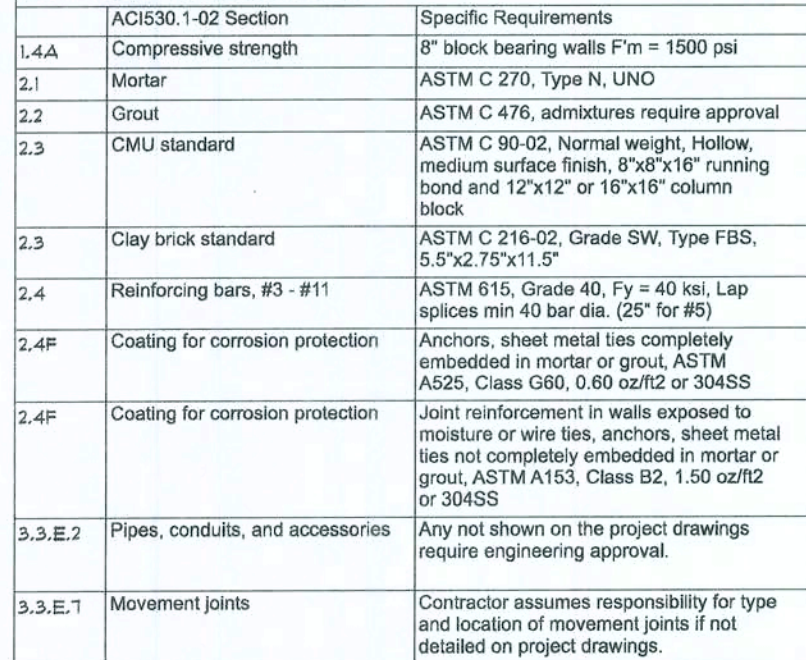
THIS DETAIL SHOWS ONLY CHANGES TO THE TYPICAL WALL SECTION IF USING RODS FOR UPLIFT

CONNECTOR TABLE			
Uplift SP	Uplift SPF	Truss Connector	To Plate
615	485	SDWCT5600	To Truss/Rafter
415	290	H3	4-8d x 12"
575	495	H2.5A	5-8d x 12"
1340	1015	H10A	9-10d x 12"
720	620	LTS12-20	6-10d x 12"
1000	860	MTS12-30	7-10d x 12"
1400	1245	HTS20-30	12-10d x 12"
Uplift SP	Uplift SPF	Strap Ties	To One Member
1235	1235	LSTA21	6-10d
1640	1455	MTA24	9-10d
1030	1030	CS20	7-10d
Uplift SP	Uplift SPF	Stud Plate Ties	To Stud
585	535	SP1	6-10d
1065	605	SP2	6-10d
771	771	LSTA24	10-10d
1235	1235	LSTA24	14-10d
Uplift SP	Uplift SPF	Holdowns @ Stomwall	To Stud / Post
1625	1600	DTT22	8-SDS 1/4"x1 1/2"
4235	3640	HT14	18-16d x 12"
Uplift SP	Uplift SPF	Holdowns @ Mono	To Stud / Post
1825	1800	DTT22	8-SDS 1/4"x1 1/2"
4235	3640	HT14	18-16d x 12"
Uplift SP	Uplift SPF	Post Bases @ Stomwall	To Post
2200	ABU44		5/8"x12" Drill & Epoxy
2300	ABU68		5/8"x12" Drill & Epoxy
Uplift SP	Uplift SPF	Post Bases @ Mono	To Post
2200	ABU44		5/8"x7" Drill & Epoxy
2300	ABU68		5/8"x7" Drill & Epoxy

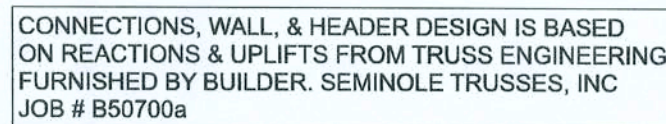
EXTERIOR WALL STUD TABLE FOR SPF #2 STUDS:

THIS STUD HEIGHT TABLE IS PER 2012 WFCM, TABLE 3.20B5, EXTERIOR LOAD BEARING & NON LOAD BEARING STUD LENGTHS FOR WALLS WITH OSB EXTERIOR AND 1/2" GYP INTERIOR. RESISTING INTERIOR ZONE WIND LOADS, 130 MPH, EXPOSURE C, STUD DEFLECTION LIMIT H/240 (NOT OK FOR BRITTLE FINISH), STUD SPACINGS SHALL BE MULTIPLIED BY 0.8 FOR FRAMING LOCATED WITHIN 4 FEET OF CORNERS FOR END ZONE LOADING. (END ZONE EXAMPLE 16" O.C. x 0.8 = 12.8" O.C.)

(1) 2x4 @ 16" OC	TO 10'-1" STUD HEIGHT
(1) 2x4 @ 12" OC	TO 11'-2" STUD HEIGHT
(1) 2x6 @ 16" OC	TO 15'-7" STUD HEIGHT
(1) 2x6 @ 12" OC	TO 17'-3" STUD HEIGHT



STEM WALL HEIGHT (FEET)	UNBALANCED BACKFILL HEIGHT	VERTICAL REINFORCEMENT FOR 8" CMU STEM WALL (INCHES C)			VERTICAL REINFORCEMENT FOR 12" CMU STEM WALL (INCHES C)		
		#5	#7	#8	#5	#7	#8
3.3	3.0	96	96	96	96	96	96
4.0	3.7	96	96	96	96	96	96
4.7	4.3	88	96	96	96	96	96
5.3	5.0	56	96	96	96	96	96
6.0	5.7	40	80	96	80	96	96
6.7	6.3	32	56	80	56	96	96
7.3	7.0	24	40	56	40	80	96
8.0	7.7	16	32	48	32	64	80
8.7	8.3	8	24	32	24	48	64
9.3	9.0	8	16	24	16	40	48



JCB NUMBER:
200164

S-2
OF 2 SHEETS