

2020 FBC-BUILDING TABLE 1004.1.1
MAXIMUM FLOOR AREA ALLOWABLE PER OCCUPANT

OCCUPANCY CLASSIFICATION	FLOOR AREA	OCCUPANCY BASIS	NUMBER OF OCCUPANTS
OFFICE NLI - 4	1442	8 1/100 SF	8
RECEPTION / LOBBY	515.2	8 1/100 SF	5
BREAK ROOM	35.4	8 1/50 SF	1
RESTROOM	40.6	8 1/50 SF	1
STORAGE	51.8	8 1/200 SF	1
MECH EQUIP.	111.8	8 1/200 SF	1
BUILDING	111.8	8 1/500 SF	1
BUILDING TOTALS:	1522.1		18

EXIT WIDTH CALCULATION

DESIGN OCCUPANCY: 18 OCCUPANTS
REQUIRED EXIT WIDTH:
8 0.30' / OCCUPANT = 18 X 0.30' = 5.4'

EXIT WIDTH PROVIDED:
BUILDING: 3 DOORS 8 34" / DOOR = 107"

PROVIDED EXIT CAPACITY:
FACILITY AREA: 107' / 0.30' = 340 OCCUPANTS

OPTIONAL FIRE/INTRUSION ALARM SYSTEM

THIS BUILDING SHALL BE EQUIPPED WITH A SELF-CONTAINED FIRE ALARM - INTRUSION ALARM SYSTEM. THE OPERATION OF WHICH SHALL ALERT THE BUILDING OCCUPANTS AND NOTIFY THE 911 EMERGENCY RESPONSE SYSTEM EQUIPMENT AND SERVICE PROVIDER SHALL BE AS SELECTED BY THE OWNER. DETAILS OF INSTALLATION SHALL BE VIA SHOP DRAWINGS AND OPERATING FEATURES SHALL BE AS REQUIRED BY NFPA 101 2011 EDITION 1. LIFE SAFETY CODE SECTION 403.4

EXIT ACCESS TRAVEL DISTANCE PER FBC 105, TABLE 105.1

OCCUPANCY - BUSINESS
150 FT. (W/O SPRINKLER SYSTEM)
150 FT. (W/SPRINKLER SYSTEM)

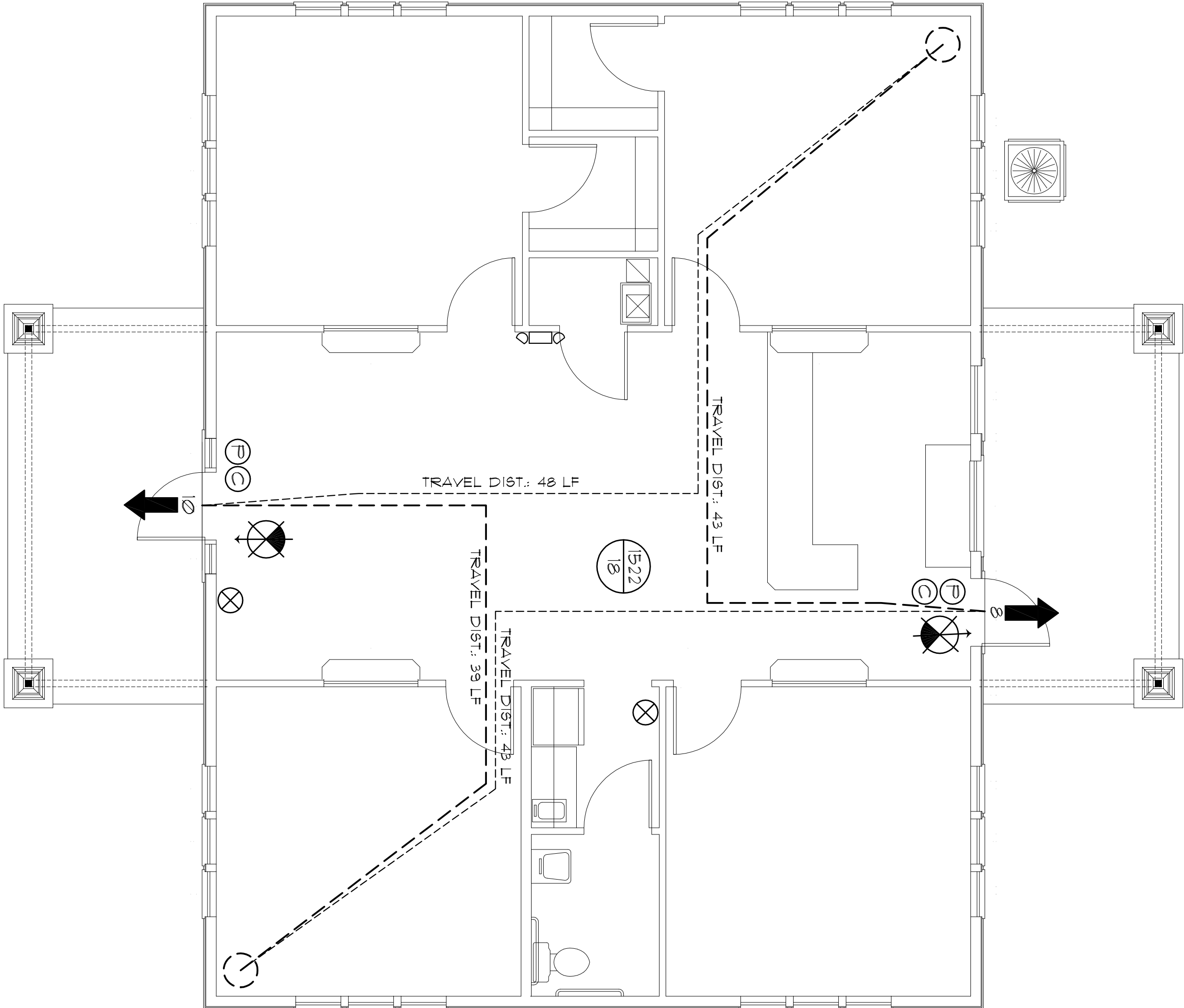
NOTE!
TRAVEL DISTANCES SHOWN ARE MAXIMUM FOR EMERGENCY EGRESS, SECONDARY EXIT EGRESS AND NON-EMERGENCY EGRESS - ALL OTHER TRAVEL DISTANCES ARE LESS THAN THAT SHOWN

NOTE!
EMERGENCY LIGHTING AND EXIT SIGNS SHALL BE PROVIDED AS DIRECTED BY THE FIRE MARSHAL, AND SHALL BE IRIED PER NEC 100.1(F)

NOTE!
SMOKE DETECTORS SHALL BE MOUNTED NOT LESS THAN 90" ABOVE FINISHED FLOOR AND SHALL BE THE IONIZATION TYPE, INTERLOCKED TOGETHER, POWERED FROM EACH LOCAL PANEL W/BATTERY BACKUP

LEGEND

- EXIT LIGHT - ARROW REPRESENTS DIRECTION OF EXIT
- WALL HUNG "ABC" FIRE EXTINGUISHER
- DOOR CLOSERS FOR EXITING OR RATING REASONS
- PANIC DEVICE
- ROOM SQUARE FOOTAGE
393 ROOM OCCUPANCY LOAD
30
- PRIMARY EGRESS W/EXIT CAPACITY
- SECONDARY EGRESS
- EMERGENCY LIGHTING - DUAL HEAD W/ BATT. PACK



LIFE SAFETY PLAN

SCALE: 1/4" = 1'-0"



8" SQ. MALTESE CROSS W/ "F" IDENTIFIER
SIGNAGE, MOUNTED 8 60" ABOVE WALKWAY
LOCATE AS DIRECTED BY THE FIRE MARSHAL

REVISION

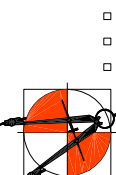
DATE: 2023
BY: N.P. Geisler
CHECKED: [Signature]

DRAWN

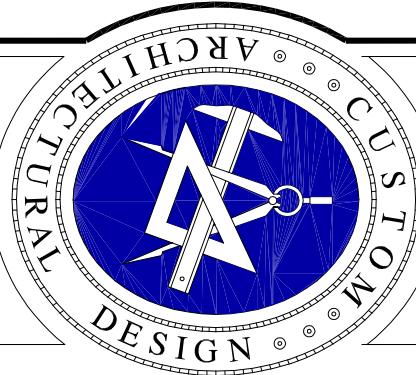
128

3RD OFFICE for:
TYLE MCLEOD
LAKE CITY, FLORIDA
LIFE SAFETY PLAN

Celebrating
51 Years of Service



1972 - 2023
N.P. Geisler, Architect
ARCHITECT



**NICHOLAS
GEISLER
ARCHITECT**

1758 NW BROWNS RD
LAKE CITY, FL 33603
352-365-4355

DATE: 16 NOV 2023

CONTRACT: 2K2336

SHEET: 1 OF 1

LSP.1

**N. P.
GEISLER**

Digitally signed by: N. P. GEISLER
DN: CN = N. P. GEISLER
C = US, O = AR0007005
OU = ARCHITECT
Date: 2023.11.21 17:07:
43-05'00'

AR0007005