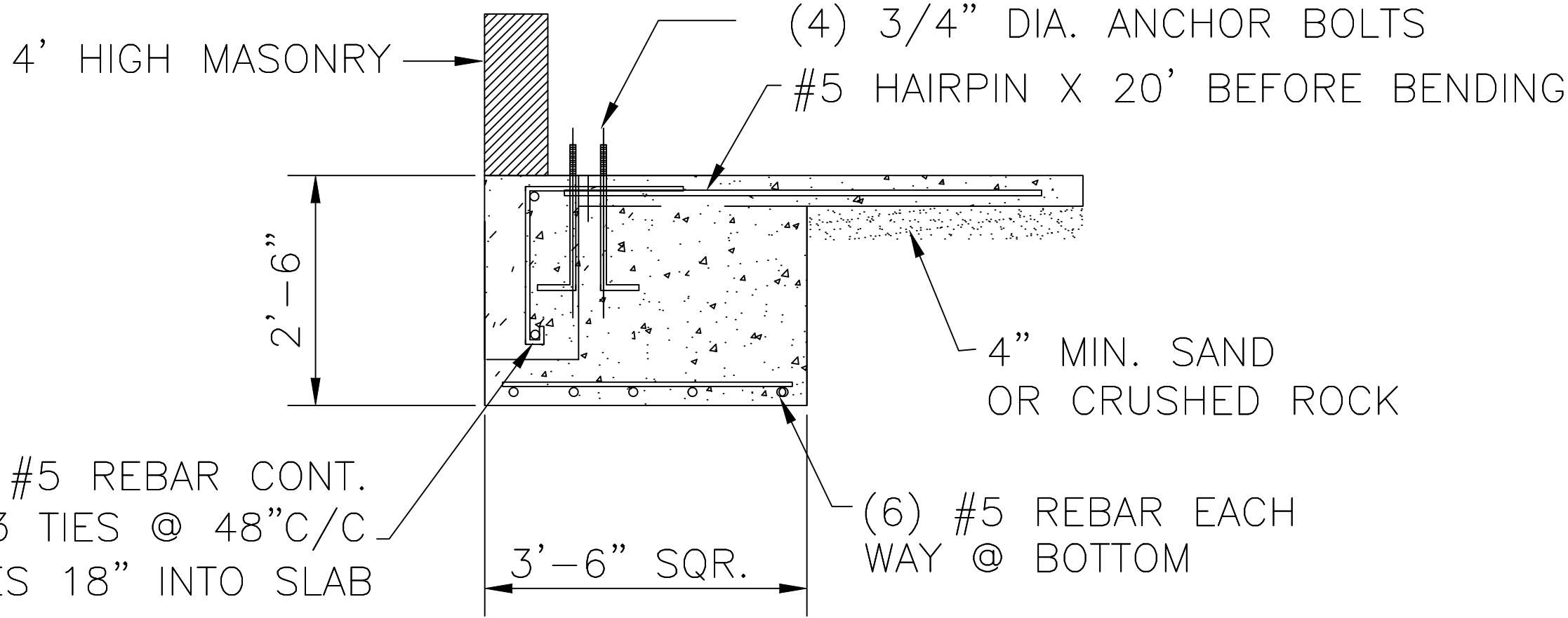
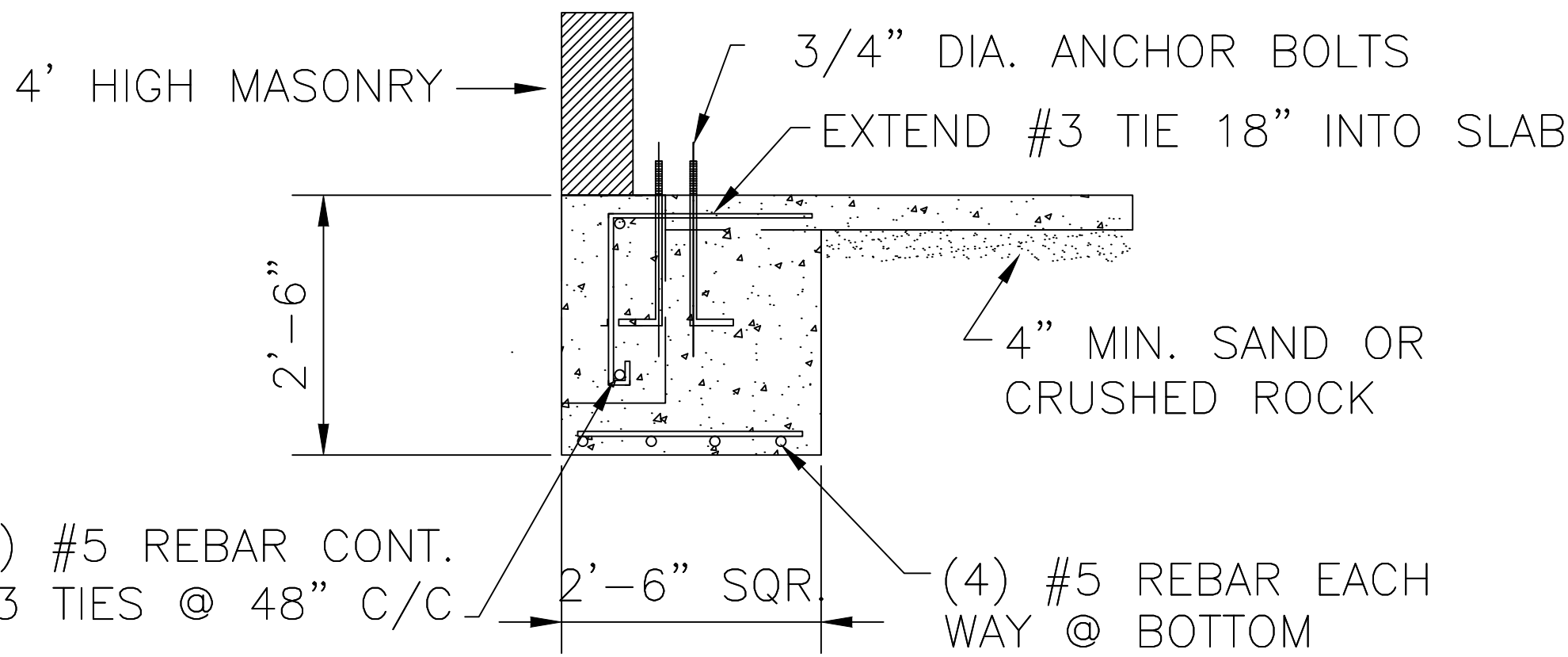


DETAIL "A"



DETAIL "B"



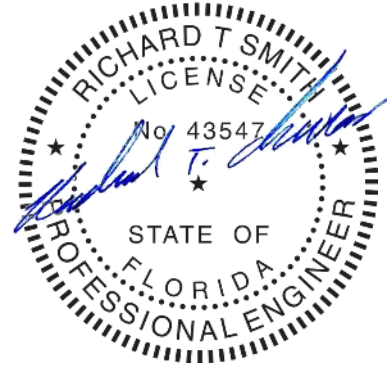
DETAIL "C"

DESIGN CODE	FBC 2020
ROOF DEAD LOAD	3.0 PSF
COLLATERAL DEAD LOAD	1.0 PSF
ROOF LIVE LOAD	20.0 PSF (SECONDARY)
ROOF LIVE LOAD	12.0 PSF (PRIMARY)
GROUND SNOW LOAD	0 PSF (Ce=1.0)
ROOF SNOW LOAD	n/a PSF
WIND LOAD	120 MPH EXPOSURE C
SEISMIC	
USE GROUP	1
SITE CLASS	D
DESIGN CATEGORY	B (Ss= 7.9% , Si=4.8%)
IMPORTANCE FACTORS	
WIND LOAD	1.0
SNOW LOAD	1.0
SEISMIC LOAD	1.0
RESPONCE MODIFICATION COEFFICIENT, R:	3.0
SYSTEM OVER STRENGTH FACTOR, Q:	3.0

NOTE:  
-SEE ANCHOR BOLT PLAN FOR SIZE, QUANTITY, & LAYOUT OF ANCHOR BOLTS.  
-SLAB TO BE A MINIMUM 4" THICK W/ 6X6 2.9/2.9 WELDED WIRE MAT, OR FIBER MESH CONCRETE ON 6 MIL VAPER BARRIER.  
-DEPTH OF FOOTING BELOW GRADE SHALL BE ADJUSTED TO SATISFY LOCAL CODES, SOIL AND WEATHER CONDITIONS, AND FROST PENETRATION.  
-SAWED CONTROL JOINTS TO BE 1" DEEP, CUT WITHIN 8 HOURS AFTER SLAB IS POURED (CUTS TO BE 20' C/O).  
-PLACE WIRE MESH AS CLOSE TO TOP OF SLAB AS POSSIBLE,& BELOW SAW CUT.  
-CONTRACTOR IS RESPONSIBLE FOR INSURING LOCAL SITE CONDITIONS MEET OR EXCEED ALL DESIGN ASSUMPTIONS.

FOUNDATION DESIGN BASED ON AN  
ALLOWABLE SOIL BEARING PRESSURE OF 1500 PSF.  
CONCRETE SHALL HAVE A MINIMUM COMPRESSIVE  
STRENGTH AT 28 DAYS OF 3000 PSI.  
REINFORCED STEEL SHALL HAVE 3" MIN. CONCRETE COVERAGE.  
REINFORCED STEEL SHALL BE IN ACCORDANCE  
WITH THE BUILDING CODE REQUIRMENTS AND  
FOR REINFORCED CONCRETE ACI  
LATEST EDITION.  
USE ASTM A-615 GRADE 60 REINFORCING STEEL.  
LAP CONT. REINFORCING STEEL BY 40 BAR DIA.

Richard T. Smith  
PE # 43547 FH-706-888-4874  
510 Lee Rd 281  
Salem AL, 36874



REVIEWED  
By Richard T Smith at 10:21 am, Apr 01, 2021

ANCHOR BOLT SCHEDULE (HOOK TYPE)		
DESCRIPTION	SHAPE	PROJECTION ABOVE BASE PLATE ELEVATION
1/2" DIA. X 7 1/2" W/NUT	6" J 1 1/2"	1 1/2" + GROUT THICKNESS
5/8" DIA. X 1'-3" W/NUT	12" J 3"	1 1/2" + GROUT THICKNESS
3/4" DIA. X 2'-2 1/2" W/NUT	21 1/2" J 5"	2 1/2" + GROUT THICKNESS
7/8" DIA. X 2'-4 1/2" W/NUT	23" J 5 1/2"	2 1/2" + GROUT THICKNESS
1" DIA. X 2'-7" W/NUT	25" J 6"	3" + GROUT THICKNESS
1 1/8" DIA. X 2'-10" W/NUT	27" J 7"	3 1/2" + GROUT THICKNESS
1 1/4" DIA. X 3'-0" W/NUT	28 1/2" J 7"	3 1/2" + GROUT THICKNESS
1 3/8" DIA. X 3'-3" W/NUT	30 1/2" J 7"	4" + GROUT THICKNESS
1 1/2" DIA. X 3'-5" W/NUT	32" J 9"	4" + GROUT THICKNESS

NOTES:  
1.) 1/2" DIA. EXPANSION BOLTS FOR MISC. FRAMED OPENINGS (WALK DOORS, WINDOWS, LOUVERS, ECT.) ARE BY OTHERS.  
2.) EMBEDMENT LENGTH AND HOOK LENGTH TO BE VERIFIED.  
3.) REFER TO SECTIONS FOR GROUT THICKNESS IF REQUIRED.

BASE PLATE	LOOSE HEAVY HEX NUT AND FLAT WASHER
PROJECTION	PROJECTION + GROUT THICKNESS
BASE PLATE ELEVATION (SEE A.B. PLAN)	GROUT BY OTHERS (IF APPLICABLE )

DRAWING DESCRIPTION					FOUNDATION PLAN					
BUILDER			CUSTOMER		LOCATION			JOB NO.		
ARCO BLDG. SYS.			DONALD DAVIES		GLEN, FL			2021051		
DRAWN	CHECKED	ISSUE DESCRIPTION	DATE	ISSUE	KNIGHT BUSINESS SERVICE					DRAWING NO.  F-1
RJK	KBS	FOR CONSTRUCTION	3/31/2021	0						