

1. THESE PLANS PERTAIN ONLY TO THE STRUCTURE, INCLUDING MAIN WIND FORCE RESISTING SYSTEM, COMPONENTS AND CLADDING, AND BASE RAIL ANCHORAGE, OTHER DESIGN ISSUES, INCLUDING BUT NOT LIMITED TO PLUMBING, ELECTRICAL, INGRESS/EGRESS, PROPERTY SET-BACKS, FINISH FLOOR ELEVATION AND SLOPE, OR OTHER LOCAL ZONING REQUIREMENTS ARE THE RESPONSIBILITY OF OTHERS.
2. THIS STRUCTURE IS DESIGNED AS A NON-HABITABLE UTILITY/STORAGE BUILDING (RISK CATEGORY I) CAPABLE OF SUPPORTING DEAD LOAD OF THE STRUCTURE AND APPLICABLE LIVE AND WIND LOADS. IMPROVEMENTS NOT SPECIFICALLY ADDRESSED HEREIN, INCLUDING DOORS, WINDOWS, OR OTHER COMPONENTS NOT LISTED IN THE FBC APPROVED PRODUCTS LIST, AND NOT PROVIDED AND INSTALLED BY CARPORTS ANYWHERE, INC., WHICH EXERT ADDITIONAL LOADS ON THE STRUCTURE SHALL BE AT THE OWNER'S RISK. CARPORTS ANYWHERE, INC. NOR THE ENGINEERING DESIGN SHALL NOT BE RESPONSIBLE FOR STRUCTURAL DAMAGE OR FAILURE DUE TO THE APPLICATION OF ADDITIONAL LOADS.
3. THIS BUILDING IS EXEMPT FROM THE FBC ENERGY CONSERVATION CODE PER SECTION C101.4.2.
4. ALL STEEL TUBING SHALL BE 50 KSI STEEL AND MEETS/EXCEEDS GALVANIZATION PER ASTM A1003/A1003M-15.
5. PLUMBING, ELECTRICAL, INGRESS/EGRESS, PROPERTY SET-BACKS, AND/OR OTHER LOCAL CODE REQUIREMENTS ARE THE RESPONSIBILITY OF THE OWNER.
6. ROOF AND WALL SHEATHING SECURED WITH #12-14x3/4" SELF-DRILLING SCREWS WITH SEAL WASHERS @ 6" O.C. MAX.
7. FIELD FRAMING CONNECTIONS SECURED WITH #12-14x3/4" SELF-DRILLING SCREWS.
8. ALL SHOP FRAMING CONNECTIONS ARE TO BE WELDED. NO WELDING DONE IN SHOP BY A CERTIFIED WELDER.
9. CONCRETE EXPANSIONS ANCHORS ARE TO BE MINIMUM 1/2" DIAMETER & 2,500LB TENSILE STRENGTH.
10. 14GA. FRAMING IS 2.5"x2.5" TUBE STEEL. NIPPLES ARE 2.25"x2.25" TUBE STEEL.

NOTES:  
SUB-GRADE SOILS:  
-TO BE TERMITES TREATED AND COVERED WITH 6 MIL VAPOR RETARDANT PER SECTION R318 AND 1816 OF THE 2020 FLORIDA BUILDING CODE, 7TH EDITION  
-BOTTOM OF CONCRETE FOOTING SHALL BE MINIMUM OF 12" BELOW UNDISTURBED OR ENGINEERED GRADE

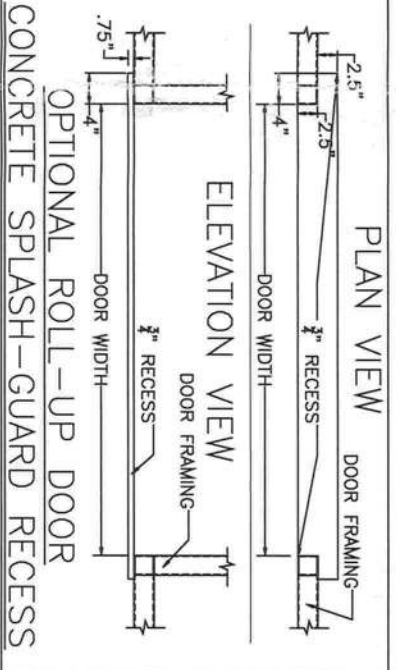
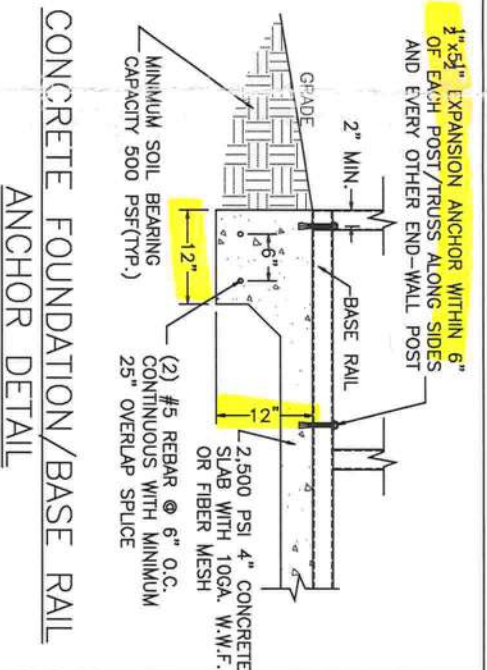
CONCRETE:  
-MINIMUM 2,500 PSI COMPRESSIVE STRENGTH AT 28 DAYS  
-ALL OPEN AREAS OF CONCRETE OUTSIDE OF THE PROPOSED STRUCTURE SHALL BE DESIGNED TO SLOPE AWAY FROM THE STRUCTURE

REINFORCING STEEL (REBAR) REQUIREMENTS:  
-MINIMUM GRADE 40 STEEL  
-REBAR MAY BE BENT IN SHOP OR FIELD PROVIDED:  
-THE REBAR IS BENT COLD  
-THE DIAMETER OF THE BEND MEASURED ON THE INSIDE DOES NOT EXCEED 6-BAR DIAMETERS. AND

-REINFORCEMENT PARTIALLY EMBEDDED IN CONCRETE SHALL NOT BE FIELD BENT EXCEPT IN CASES WHERE DOWELS NEED TO BE BENT TO ALIGN WITH A VERTICAL CELL. THESE REBAR MAY BE BENT NOT TO EXCEED TO SLOPE OF 1" HORIZONTALLY TO 6" VERTICALLY.

-COVER:  
-3" COVER MINIMUM WHERE THE CONCRETE IS CAST AGAINST AND PERMANENTLY IN CONTACT WITH SOIL OR WEATHER, AND 1 1/2" ELSEWHERE. REBAR EMBEDDED IN GROUTED CELLS SHALL HAVE A MINIMUM CLEAR DISTANCE OF 1 1/2" FOR FINE GROUT, AND 1" FOR COARSE GROUT BETWEEN REBAR AND ANY FACE OF A CELL. REBAR USED IN MASONRY WALLS SHALL HAVE A MASONRY COVER (INCLUDING GROUT) OF NOT LESS THAN 2" FOR MASONRY UNITS WITH FACE EXPOSED TO EARTH OR WEATHER, AND 1 1/2" FOR MASONRY UNITS NOT EXPOSED TO EARTH OR WEATHER.

GALVANIZATION:  
-METAL ACCESSORIES FOR USE IN EXTERIOR WALL CONSTRUCTION AND NOT DIRECTLY EXPOSED TO WEATHER SHALL BE GALVANIZED IN ACCORDANCE WITH ASTM A 153, CLASS B-2. METAL PLATE CONNECTORS, SCREWS, BOLTS, AND NAILS EXPOSED DIRECTLY TO WEATHER SHALL BE STAINLESS STEEL OR HOT DIPPED GALVANIZED.



CODE INFORMATION

CODE VERSION	FBC 2020 7th Edition, ASCE-7-16
MANUFACTURER	CARPORTS ANYWHERE
BUILDING TYPE	UTILITY STRUCTURE
CONSTRUCTION TYPE	II-B
RISK CATEGORY	I
FIRE PROTECTION	NONE
FIRE SUPPRESSION SYSTEM	NONE
OCCUPANCY	UTILITY, U
WIND SPEED	Vult-140mph
EXPOSURE	B
ENCLOSURE	ENCLOSED
INTERNAL PRESSURE COEFF.	+/- 0.18
IMPORTANCE FACTOR	1.0
ROOF DEAD LOAD	10PSF
ROOF LIVE LOAD	20PSF OR 300lb P.L.
FLOOR DEAD LOAD	10PSF
FLOOR LIVE LOAD	50PSF
"R" RATING OF WALLS, FLOOR, ROOF	N/A
MODULES PER BUILDING	1
HURRICANE PROTECTION USAGE	NO
HURRICANE SHELTER USAGE	NO
SQUARE FOOTAGE	900 SQ. FT.

REVISIONS

REV	DESCRIPTION	DATE	BY
1	RUD PRODUCT	8/26/21	MTB

DRAWN BY:	MTB
DATE:	8/21/21
LOCATION:	265 Maudenhelen St, Apopka
SIZE:	30" L X 30" W X 10" H

PLAN VIEW - Roy Brown #1

8/27/21





CODE INFORMATION

CODE VERSION	FBC 2020 7th Edition, ASCE-7-16
MANUFACTURER	CARPORTS ANYWHERE
BUILDING TYPE	UTILITY STRUCTURE
CONSTRUCTION TYPE	II-B
RISK CATEGORY	I
FIRE PROTECTION	NONE
FIRE SUPPRESSION SYSTEM	NONE
OCCUPANCY	UTILITY, U
WIND SPEED	Vult-140mph
EXPOSURE	B
ENCLOSURE	ENCLOSED
INTERNAL PRESSURE COEFF.	+/- 0.18
IMPORTANCE FACTOR	1.0
ROOF DEAD LOAD	10PSF
ROOF LIVE LOAD	20PSF OR 300lb P.L.
FLOOR DEAD LOAD	10PSF
FLOOR LIVE LOAD	60PSF
RATING OF WALLS,FLOOR,ROOF	N/A
MODULES PER BUILDING	1
HURRICANE PROTECTION USAGE	NO
HURRICANE SHELTER USAGE	NO
SQUARE FOOTAGE	900 SQ. FT.

REVISIONS

REV	DESCRIPTION	DATE	BY
1	RUD PRODUCT	8/26/21	MTB


DRAWN BY: MTB

DATE: 8/21/21

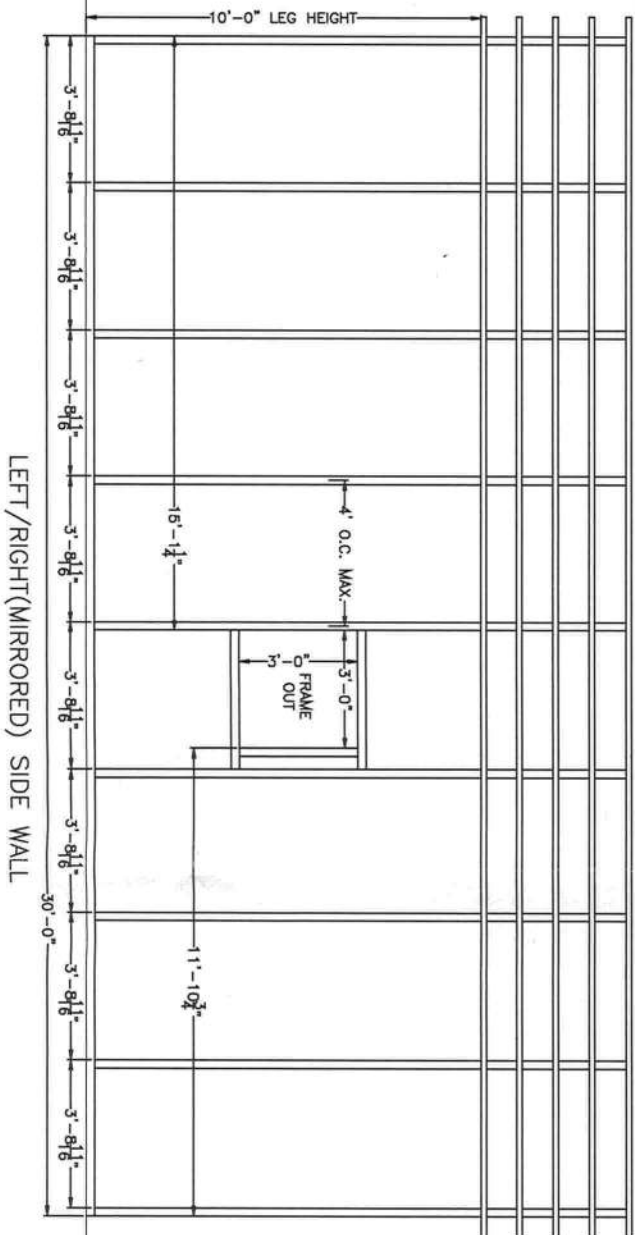
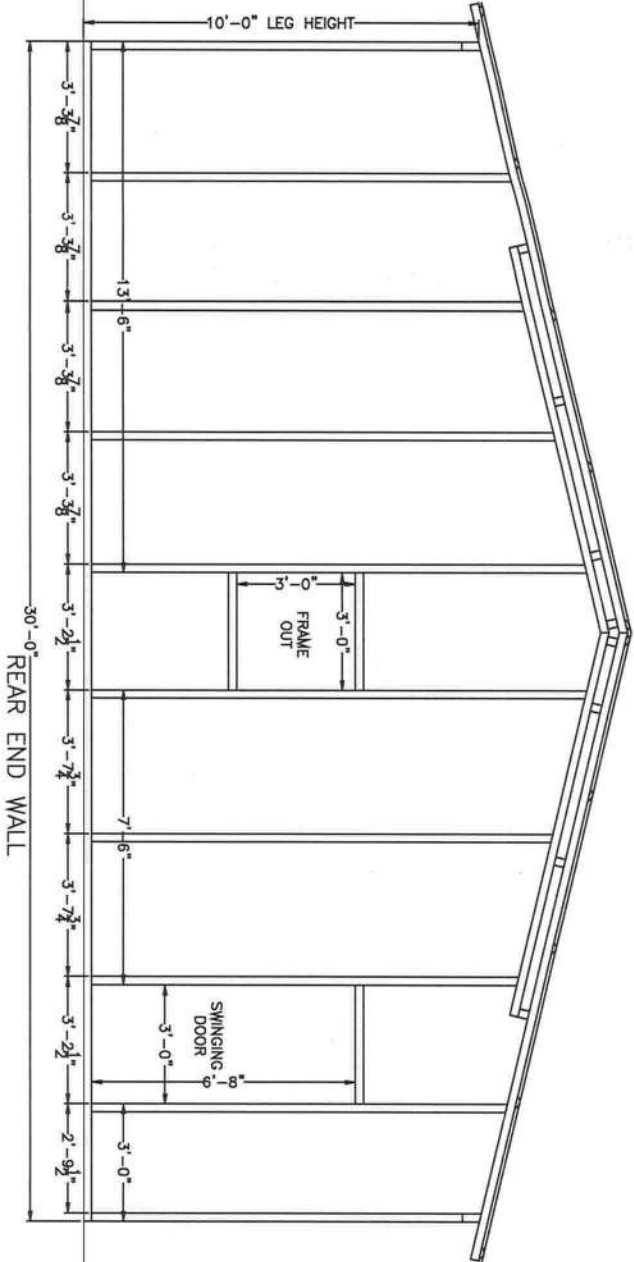
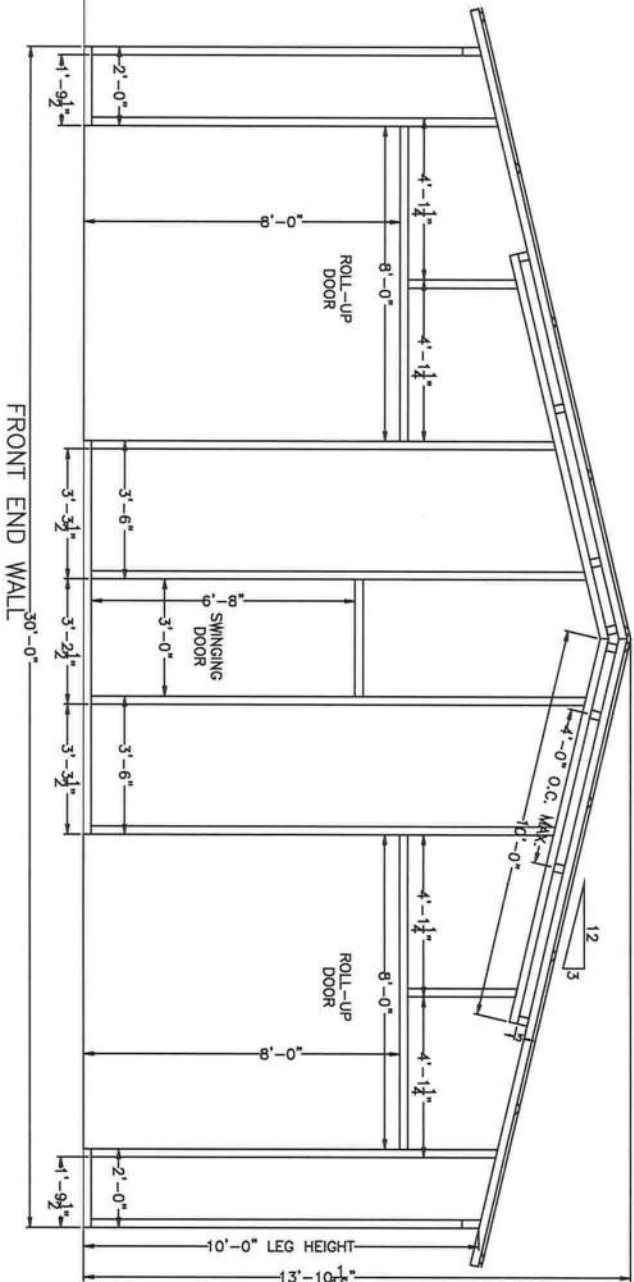
LOCATION: 265 Maudehelen St, Apopka

SIZE: 30'L X 30'W X 10'H



8/27/21

Matthew T. Baldwin P.E.  
Florida License #64608



TITLE: SIDE & END FRAMING VIEWS



CODE INFORMATION	
CODE VERSION	FBC 2020 7th Edition, ASCE-7-16
MANUFACTURER	CARPORTS ANYWHERE
BUILDING TYPE	UTILITY STRUCTURE
CONSTRUCTION TYPE	II-B
RISK CATEGORY	I
FIRE PROTECTION	NONE
FIRE SUPPRESSION SYSTEM	NONE
OCCUPANCY	UTILITY, U
WIND SPEED	Vult-140mph
EXPOSURE	B
ENCLOSURE	ENCLOSED
INTERNAL PRESSURE COEFF.	+/- 0.18
IMPORTANCE FACTOR	1.0
ROOF DEAD LOAD	10PSF
ROOF LIVE LOAD	20PSF OR 300lb P.L.
FLOOR DEAD LOAD	10PSF
FLOOR LIVE LOAD	50PSF
"R" RATING OF WALLS,FLOOR,ROOF	N/A
MODULES PER BUILDING	1
HURRICANE PROTECTION USAGE	NO
HURRICANE SHELTER USAGE	NO
SQUARE FOOTAGE	900 SQ. FT.

REVISIONS			
REV	DESCRIPTION	DATE	BY
1	RUD PRODUCT	8/26/21	MTB

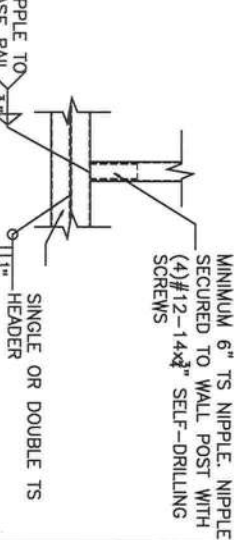
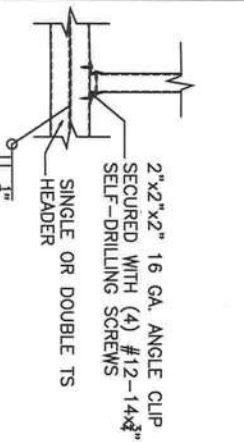
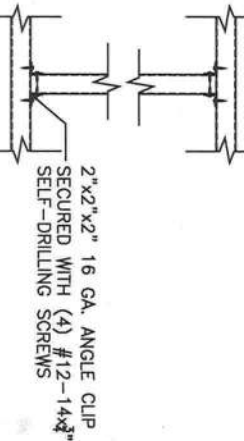
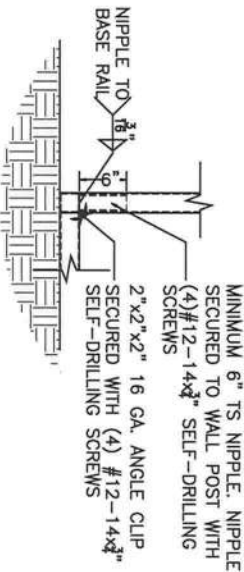
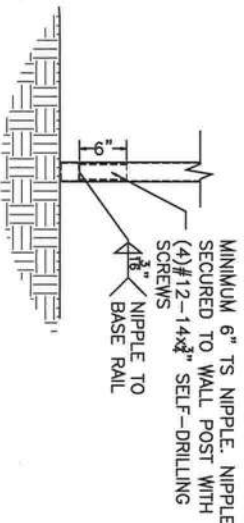
DRAWN BY:	MTB
DATE:	8/21/21
LOCATION:	266 Maudehelen St, Apopka
SIZE:	30'L X 30'W X 10'H

Professional Engineer  
Matthew T. Baldwin  
Florida License #64608

8/27/21

Stamp

TITLE: SIDE & END VIEWS



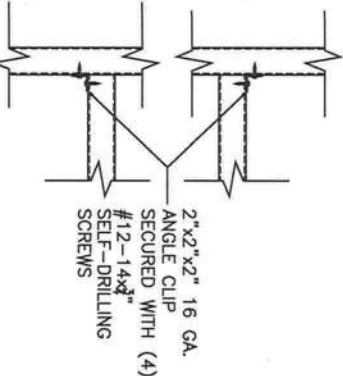
POST TO BASE RAIL  
CONNECTION

END POST TO BASE RAIL  
CONNECTION

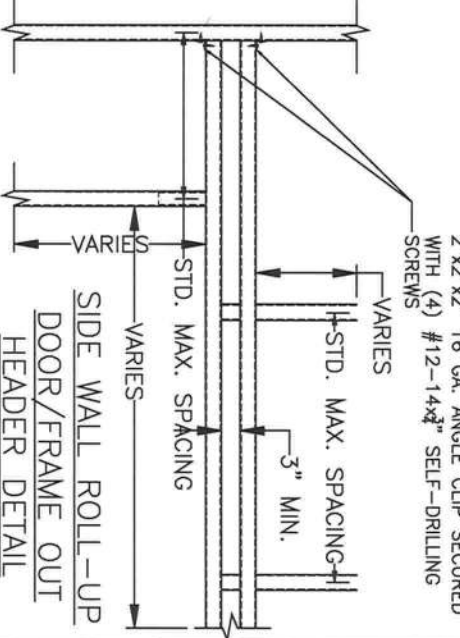
INTERMEDIATE POST TO  
HEADER/BASE RAIL/OR  
WINDOW RAIL DETAIL

HEADER CONNECTION  
DETAIL OPTION 1

HEADER CONNECTION DETAIL  
OPTION 2

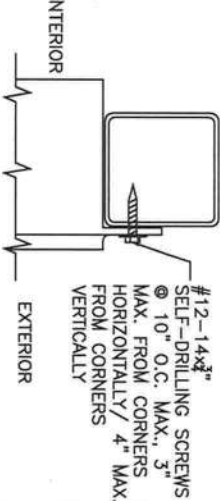
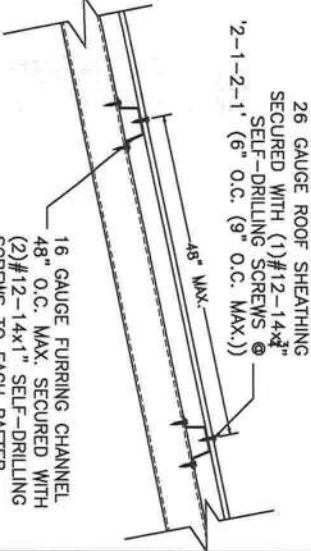
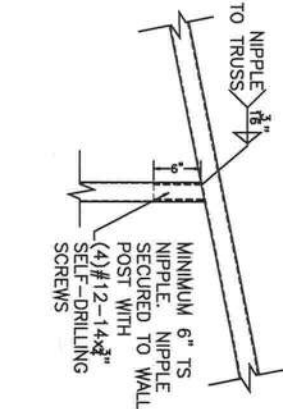


NON-STRUCTURAL  
HEADER OR WINDOW  
RAIL TO POST DETAIL

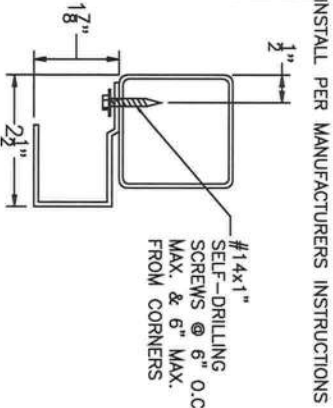


POST TO TRUSS  
CONNECTION

ROOF PANEL CONNECTION  
VERTICAL SHEATHING OPTION

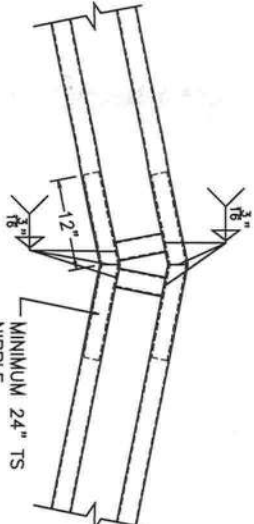
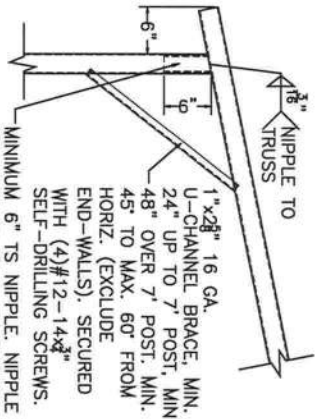


DOOR FRAME TO POST  
CONNECTION



ROLL-UP DOOR TO  
POST CONNECTION

BOX EAVE RAFTER TO  
POST CONNECTION DETAIL



TRUSSED RAFTER  
CONNECTION DETAIL

Enclosed Design Pressures - 140 mph Basic Wind Speed					
Zone					
Roof			Wall		
1	2n	2r	2e	3r	3e
9.6	9.6	9.6	12.0	12.0	14.4
-9.6	-29.5	-23.6	-9.6	-51.5	-43.3

APPROVED PRODUCTS		APPROVAL NO.
ROOF SHEATHING	Carports Anywhere Hampton Rib Roof Panel	FL27402.1
WALL SHEATHING	Carports Anywhere Hampton Rib Wall Panel	FL27403.1
SWINGING DOOR	ELIXER DOOR AND METAL COMPANY 407 STEEL DOOR	FL17996.5
ROLL-UP DOOR	JANUS INTERNATIONAL CORPORATION SERIES 750: MAX. 8'8"x12'	FL21450.9



CODE INFORMATION

CODE VERSION	FBC 2020 7th Edition, ASCE-7-16
MANUFACTURER	CARPORTS ANYWHERE
BUILDING TYPE	UTILITY STRUCTURE
CONSTRUCTION TYPE	II-B
RISK CATEGORY	I
FIRE PROTECTION	NONE
FIRE SUPPRESSION SYSTEM	NONE
OCCUPANCY	UTILITY, U
WIND SPEED	Vult-140mph
EXPOSURE	B
ENCLOSURE	ENCLOSED
INTERNAL PRESSURE COEFF.	+/- 0.18
IMPORTANCE FACTOR	1.0
ROOF DEAD LOAD	10PSF
ROOF LIVE LOAD	20PSF OR 300lb P.L.
FLOOR DEAD LOAD	10PSF
FLOOR LIVE LOAD	50PSF
"R" RATING OF WALLS/FLOOR/ROOF	N/A
MODULES PER BUILDING	1
HURRICANE PROTECTION USAGE	NO
HURRICANE SHELTER USAGE	NO
SQUARE FOOTAGE	900 SQ. FT.

REVISIONS

REV	DESCRIPTION	DATE	BY
1	RUD PRODUCT	8/26/21	MTB

DRAWN BY:	MTB
DATE:	8/21/21
LOCATION:	265 Maudelheien St, Apopka
SIZE:	30" L X 30" W X 10" H

TITLE: DETAILS

Sheet: CA-4 OF 4

8/27/21  
Matthew T. Baldwin P.E.  
Florida License #64608