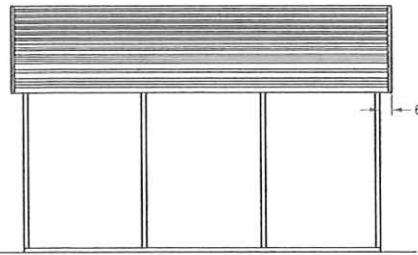
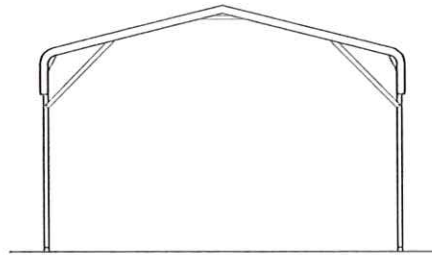


BOW FRAME RAFTER OPEN CARPORT - HORIZONTAL ROOF

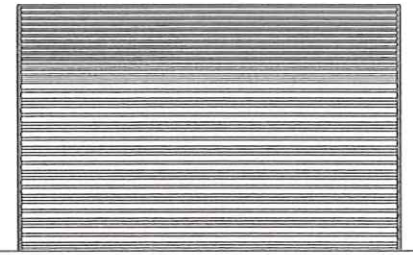


TYPICAL SIDE ELEVATION
NOT TO SCALE

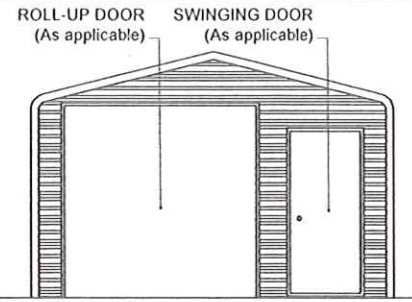


TYPICAL END ELEVATION
NOT TO SCALE

BOW FRAME RAFTER ENCLOSED BUILDING - HORIZONTAL ROOF

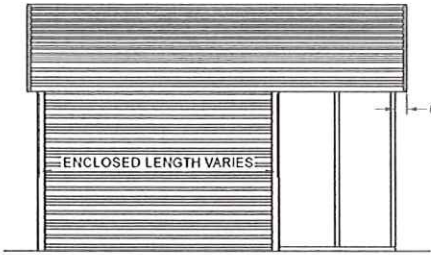


TYPICAL SIDE ELEVATION
NOT TO SCALE

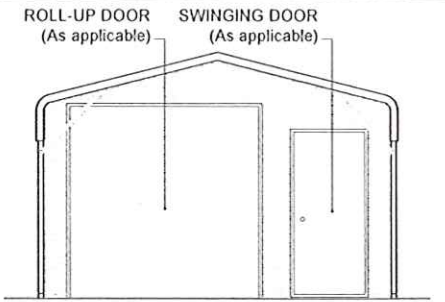


TYPICAL END ELEVATION
NOT TO SCALE

BOW FRAME RAFTER PARTIALLY OPEN / ENCLOSED BUILDING - HORIZONTAL ROOF

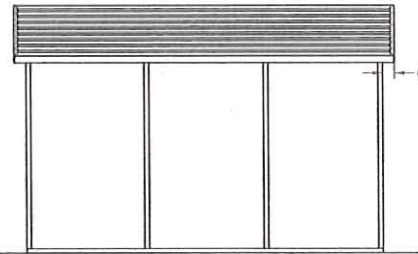


TYPICAL SIDE ELEVATION
NOT TO SCALE

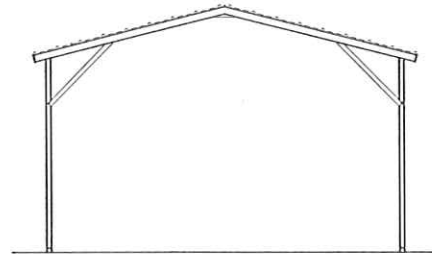


TYPICAL END ELEVATION
NOT TO SCALE

BOX EAVE FRAME RAFTER OPEN CARPORT - HORIZONTAL ROOF

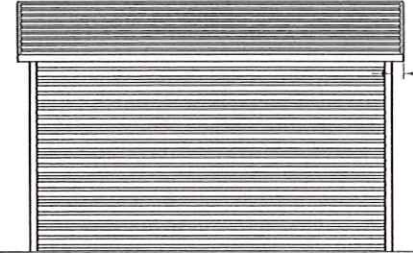


TYPICAL SIDE ELEVATION
NOT TO SCALE

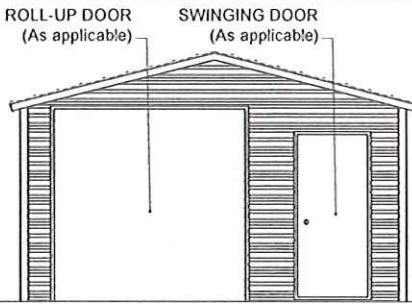


TYPICAL END ELEVATION
NOT TO SCALE

BOX EAVE FRAME RAFTER ENCLOSED BLDG - HORIZONTAL ROOF

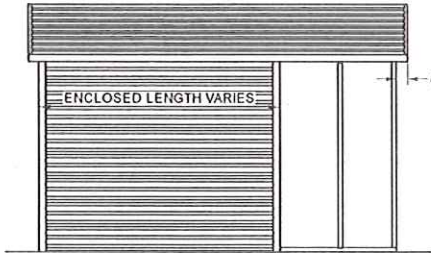


TYPICAL SIDE ELEVATION
NOT TO SCALE

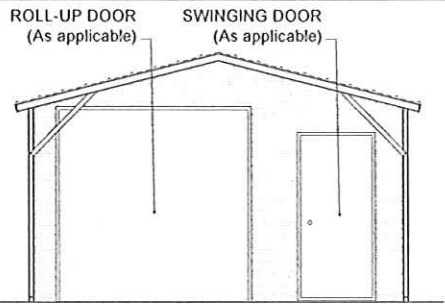


TYPICAL END ELEVATION
NOT TO SCALE

BOX EAVE FRAME RAFTER PARTIALLY OPEN / ENCLOSED BLDG - HORIZONTAL ROOF

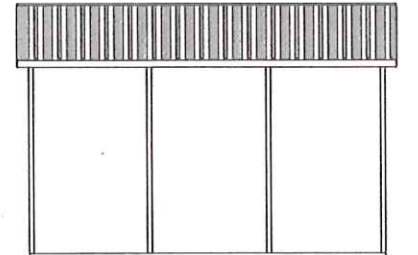


TYPICAL SIDE ELEVATION
NOT TO SCALE

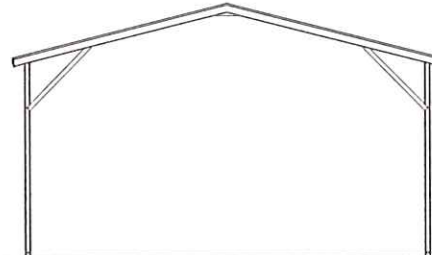


TYPICAL END ELEVATION
NOT TO SCALE

BOX EAVE FRAME RAFTER OPEN CARPORT - VERTICAL ROOF

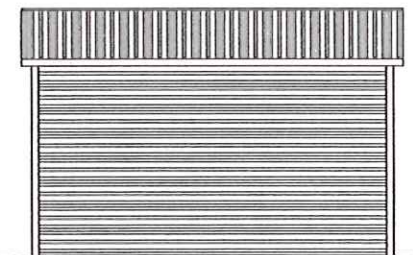


TYPICAL SIDE ELEVATION
NOT TO SCALE

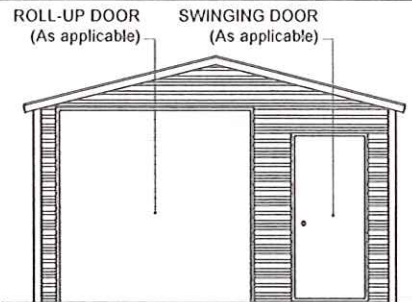


TYPICAL END ELEVATION
NOT TO SCALE

BOX EAVE FRAME RAFTER ENCLOSED BLDG - VERTICAL ROOF

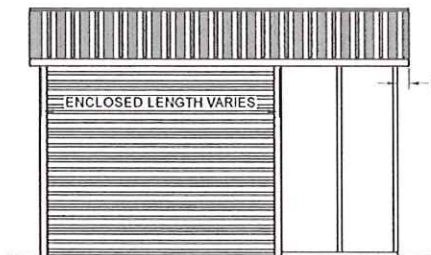


TYPICAL SIDE ELEVATION
NOT TO SCALE

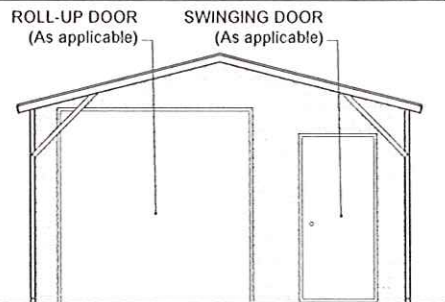


TYPICAL END ELEVATION
NOT TO SCALE

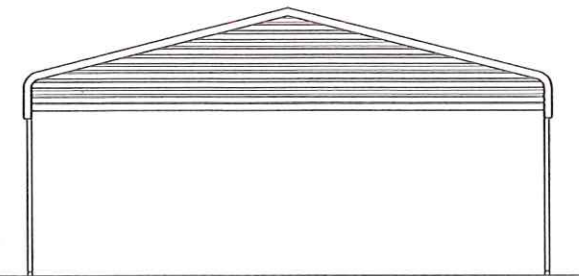
BOX EAVE FRAME RAFTER PARTIALLY OPEN / ENCLOSED BLDG - VERTICAL ROOF



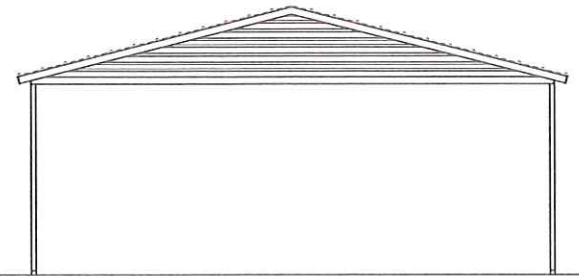
TYPICAL SIDE ELEVATION
NOT TO SCALE



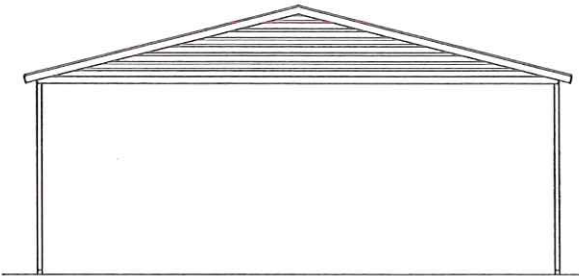
TYPICAL END ELEVATION
NOT TO SCALE



TYPICAL BOW RAFTER GABLE END ELEVATION
NOT TO SCALE

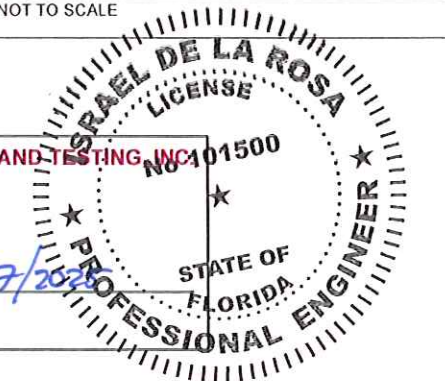


TYPICAL BOX EAVE RAFTER GABLE END ELEVATION
HORIZONTAL ROOF
NOT TO SCALE



TYPICAL BOX EAVE RAFTER GABLE END ELEVATION
VERTICAL ROOF
NOT TO SCALE

BECHTOL ENGINEERING AND TESTING, INC.
605 WEST NEW YORK AVENUE
DELAND, FLORIDA 32720



PLEASE NOTE: PLANS EXPIRE MIDNIGHT 12/31/25

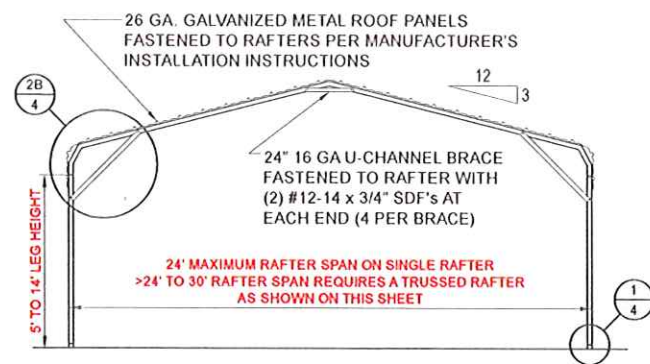
CAROLINA CARPORTS, INC.
GENERIC PLANS FOR USE IN THE STATE OF FLORIDA
UP TO 30' WIDE AND RISK CATEGORY I ONLY



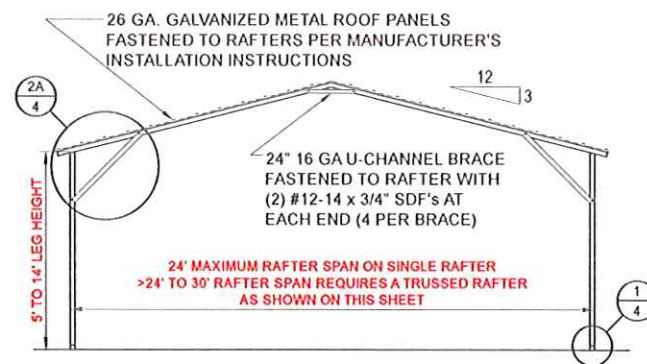
BECHTOL ENGINEERING
AND TESTING, Inc.

CONSULTING GEOTECHNICAL, ENVIRONMENTAL AND MATERIALS TESTING ENGINEERS
Certificate of Authorization No. 00005492

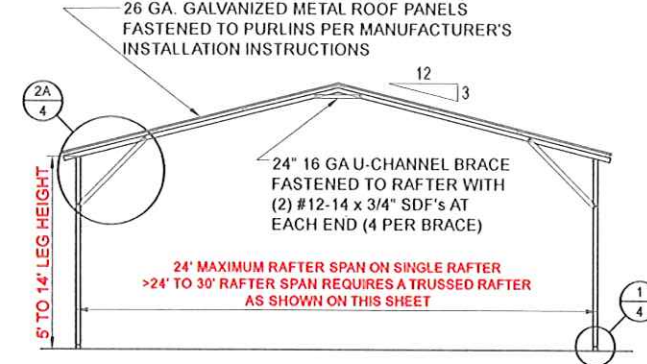
REVISED	DATE	1/2/2025
DRAWN	CS	SCALE NTS
CHECKED	CS / ID	PROJ. NO. G25001
APPROVED	TB / LP / ID	SHEET 2 OF 6



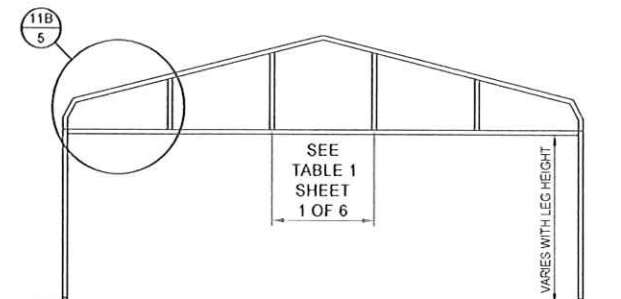
TYPICAL INTERIOR POST/RAFTER FRAME SECTION - BOW FRAME
NOT TO SCALE



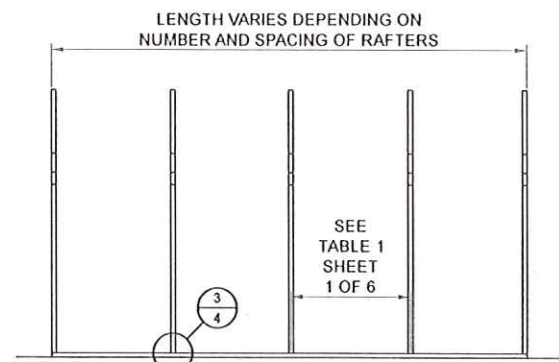
TYPICAL INTERIOR POST/RAFTER FRAME SECTION - HORIZONTAL ROOF - BOX EAVE
NOT TO SCALE



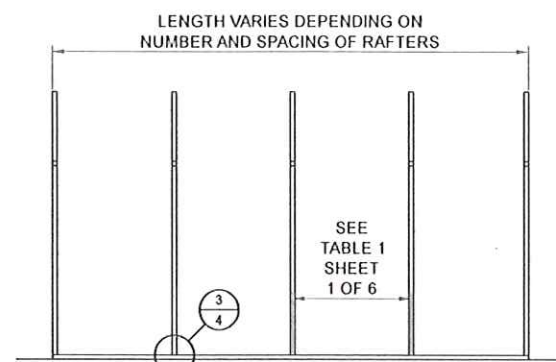
TYPICAL INTERIOR POST/RAFTER FRAME SECTION - VERTICAL ROOF - BOX EAVE
NOT TO SCALE



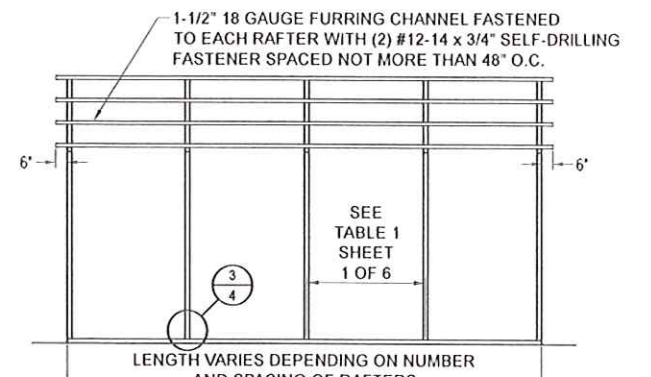
TYPICAL BOW RAFTER GABLE END FRAMING PLAN
NOT TO SCALE



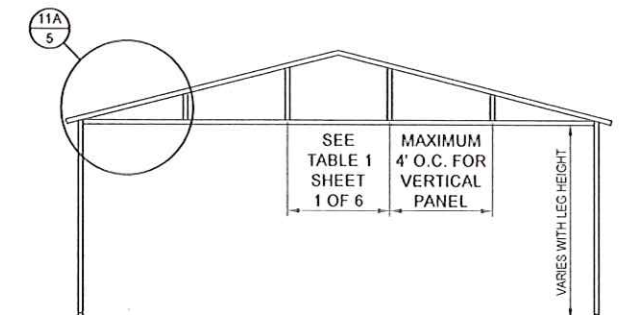
TYPICAL POST/RAFTER FRAMING PLAN - BOW FRAME
NOT TO SCALE



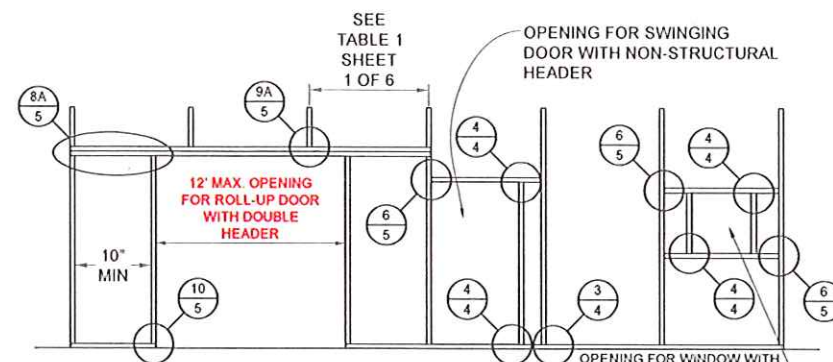
TYPICAL POST/RAFTER FRAMING PLAN - BOX EAVE
NOT TO SCALE



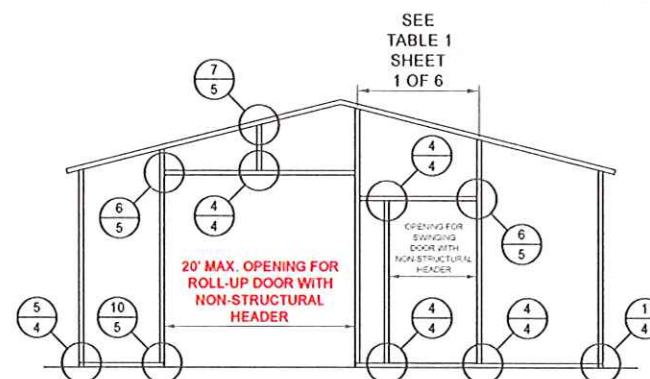
TYPICAL POST/RAFTER FRAMING PLAN - VERTICAL ROOF
NOT TO SCALE



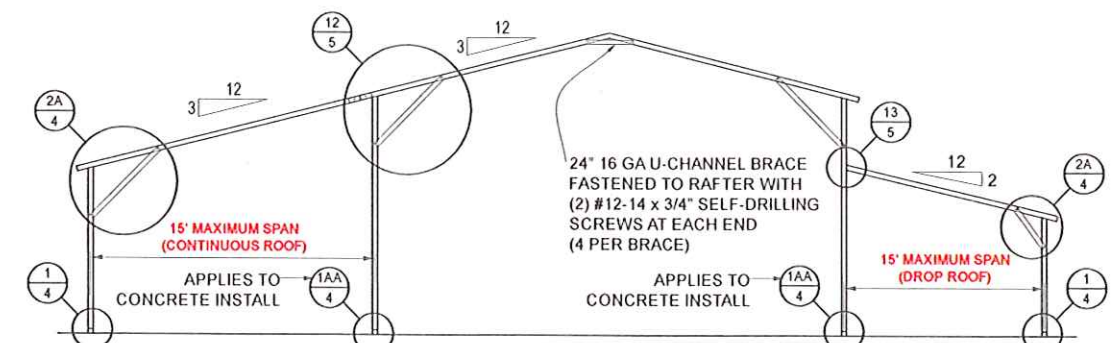
TYPICAL BOX EAVE RAFTER GABLE END FRAMING PLAN
NOT TO SCALE



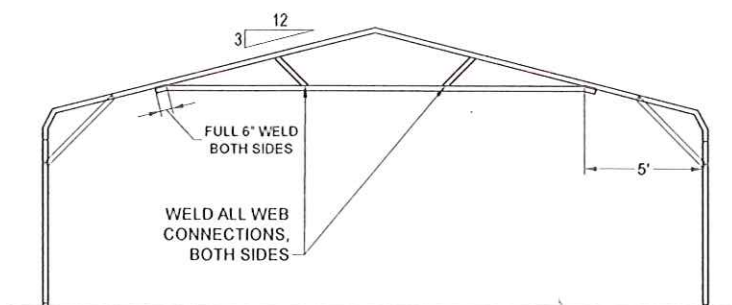
TYPICAL SIDE WALL OPENINGS FRAMING PLAN
NOT TO SCALE



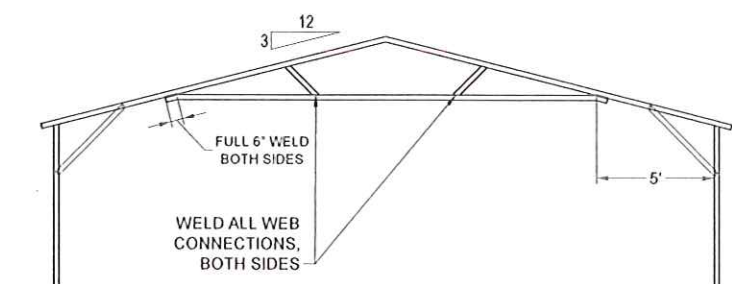
TYPICAL END WALL OPENINGS POST/RAFTER FRAMING PLAN
NOT TO SCALE



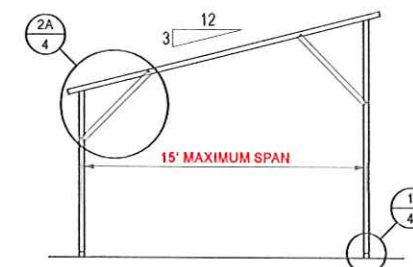
TYPICAL LEAN-TO OPTIONS FRAMING PLAN (BOTH OPTIONS SHOWN)
NOT TO SCALE (BOX EAVE RAFTER SHOWN, ONLY STANDARD LEAN-TO IS APPLICABLE TO BOW FRAME)



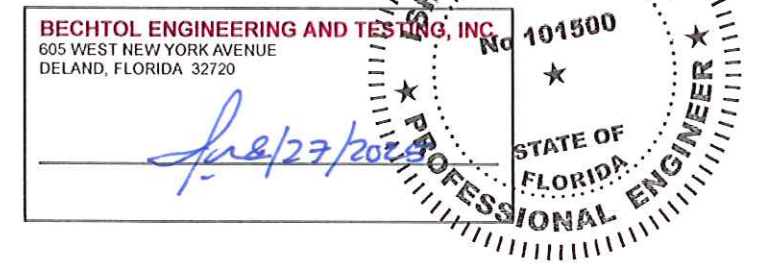
OPTIONAL 24'-1" TO 30' TRUSSED RAFTER - BOW
NOT TO SCALE



OPTIONAL 24'-1" TO 30' TRUSSED RAFTER - BOX EAVE
NOT TO SCALE



FREESTANDING LEAN-TO FRAMING PLAN
NOT TO SCALE

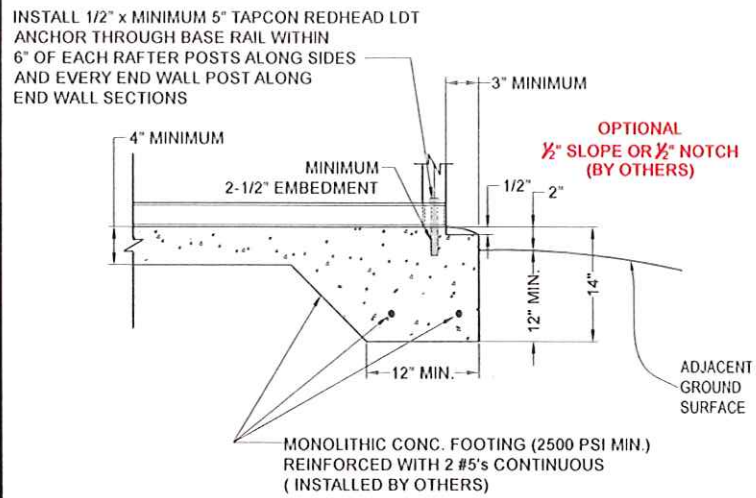


PLEASE NOTE: PLANS EXPIRE MIDNIGHT 12/31/25

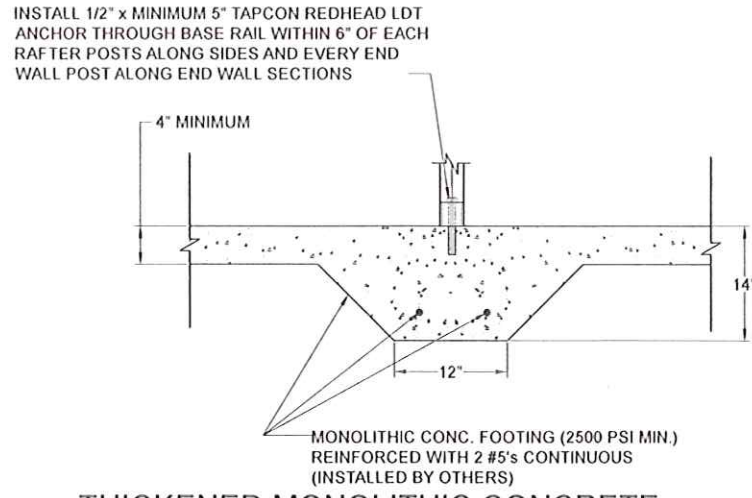
CAROLINA CARPORTS, INC.
GENERIC PLANS FOR USE IN THE STATE OF FLORIDA
UP TO 30' WIDE AND RISK CATEGORY I ONLY

BECHTOL ENGINEERING AND TESTING, INC.
CONSULTING GEOTECHNICAL, ENVIRONMENTAL AND MATERIALS TESTING ENGINEERS
Certificate of Authorization No. 0005492

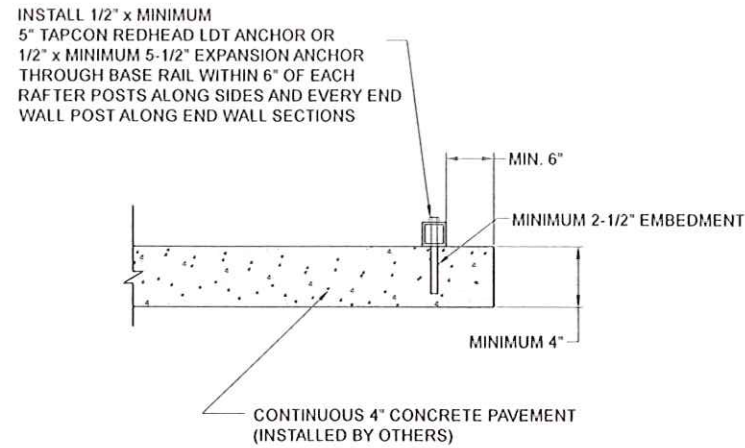
REVISED	DATE	1/2/2025
DRAWN	CS	SCALE NTS
CHECKED	CS / ID	PROJ NO G25001
APPROVED	TB / LP / ID	SHEET 3 OF 6



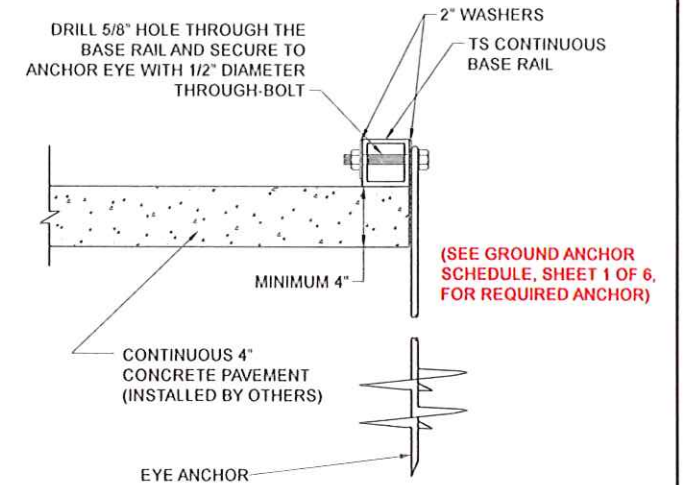
1A CONCRETE BASE RAIL ANCHORAGE
Not To Scale



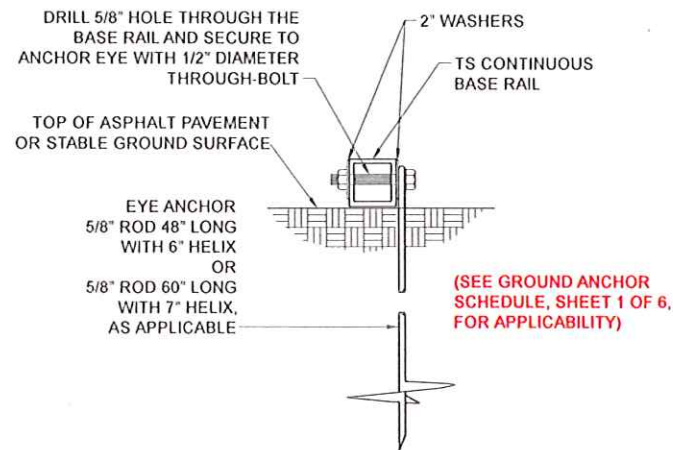
1AA THICKENED MONOLITHIC CONCRETE BASE RAIL ANCHORAGE FOR SHARED POST
Not To Scale



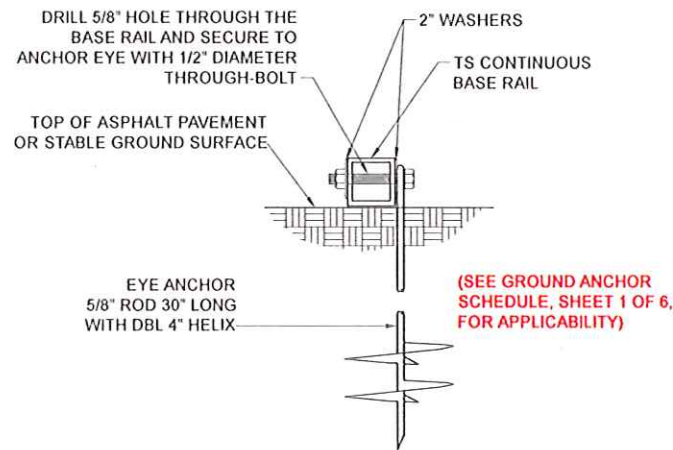
1B CONCRETE BASE RAIL ANCHORAGE
Not To Scale (OPTIONAL - OPEN CARPORTS ONLY)



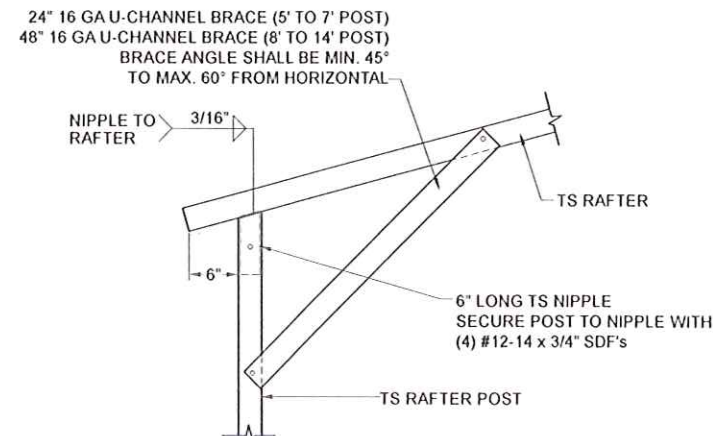
1C CONCRETE BASE RAIL ANCHORAGE
Not To Scale (ALSO UTILIZE WHERE SLAB EDGE DISTANCE DOES NOT MEET MINIMUM EDGE DISTANCE SHOWN IN DETAIL 1B)



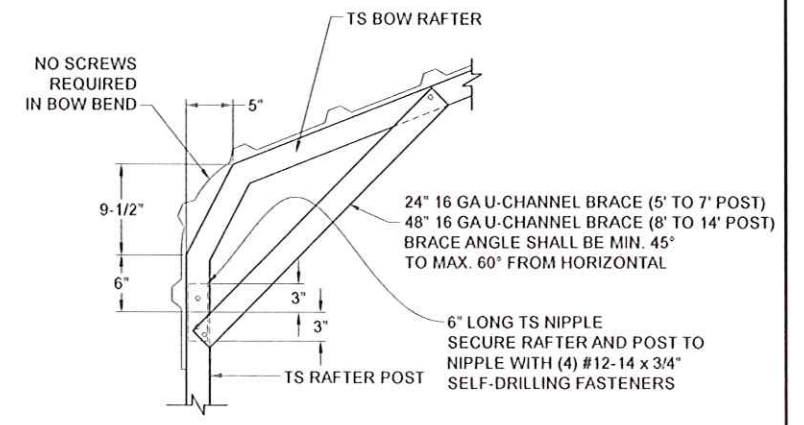
1D BASE RAIL DEEP ANCHORAGE
Not To Scale



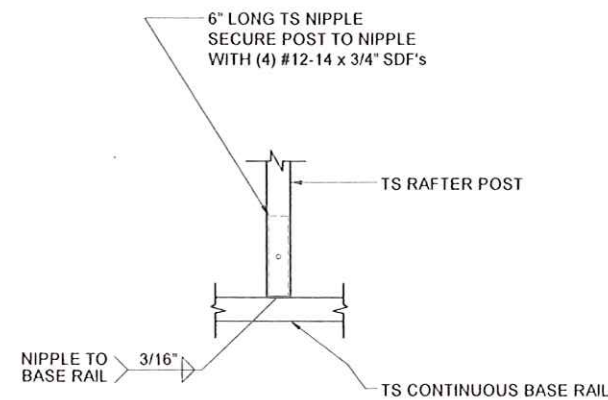
1E BASE RAIL ANCHORAGE
Not To Scale



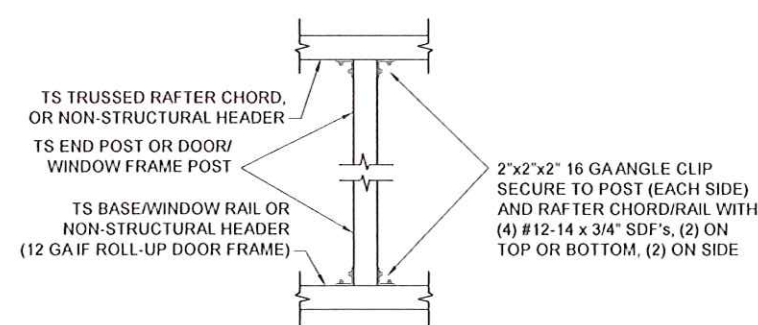
2A BOX EAVE RAFTER/POST DETAIL
Not To Scale



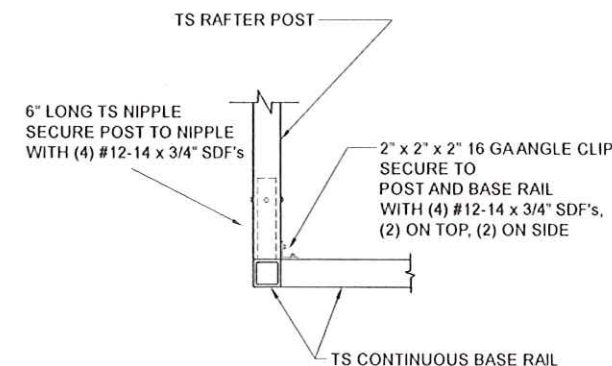
2B BOW RAFTER/POST DETAIL
Not To Scale



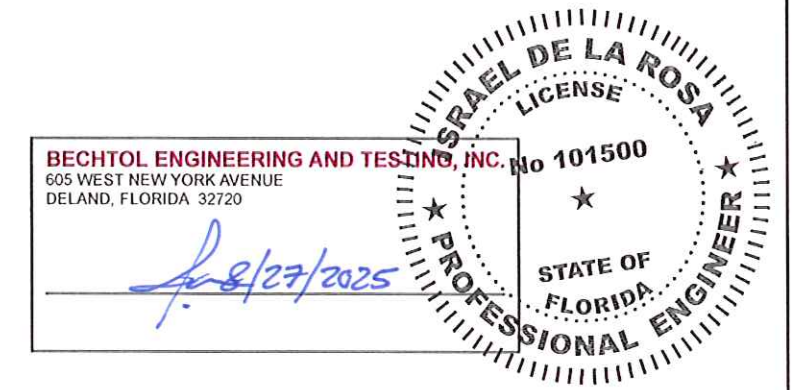
3 POST/BASE RAIL CONN. DETAIL
Not To Scale



4 POST TO RAIL, TRUSS CHORD, OR NON-STRUCTURAL HEADER CONN. DETAIL
Not To Scale



5 END POST/BASE RAIL CONN.
Not To Scale

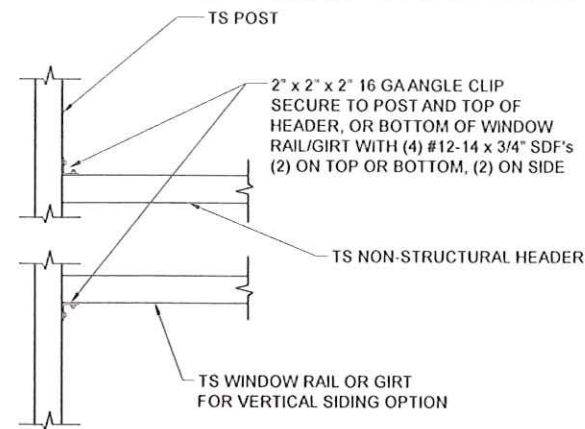


PLEASE NOTE: PLANS EXPIRE MIDNIGHT 12/31/25

CAROLINA CARPORTS, INC.
GENERIC PLANS FOR USE IN THE STATE OF FLORIDA
UP TO 30' WIDE AND RISK CATEGORY I ONLY

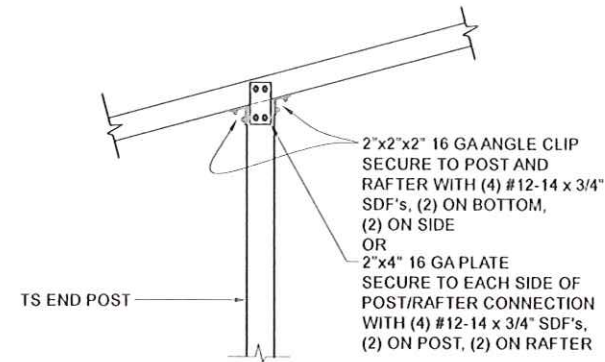
DESIGNED BY	CS	DATE	1/2/2025
CHECKED BY	CS / ID	SCALE	NTS
APPROVED BY	TB / LP / ID	PROJ NO	G25001
			SHEET 4 OF 6

BECHTOL ENGINEERING AND TESTING, inc.
CONSULTING GEOTECHNICAL, ENVIRONMENTAL, AND MATERIALS TESTING ENGINEERS
Certificate of Authorization No. 00005493



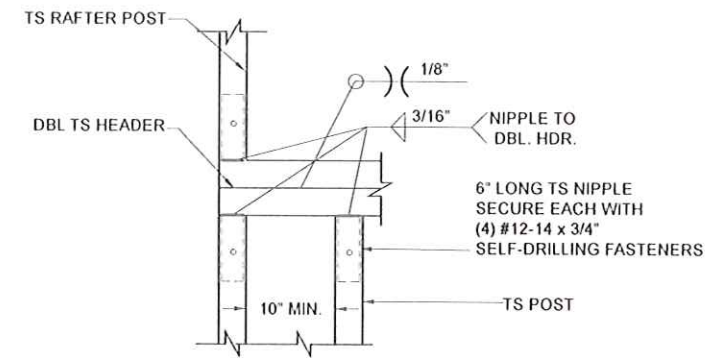
6 NON-STRUCTURAL HEADER, WINDOW RAIL, OR GIRT TO POST CONN. DETAIL

Not To Scale



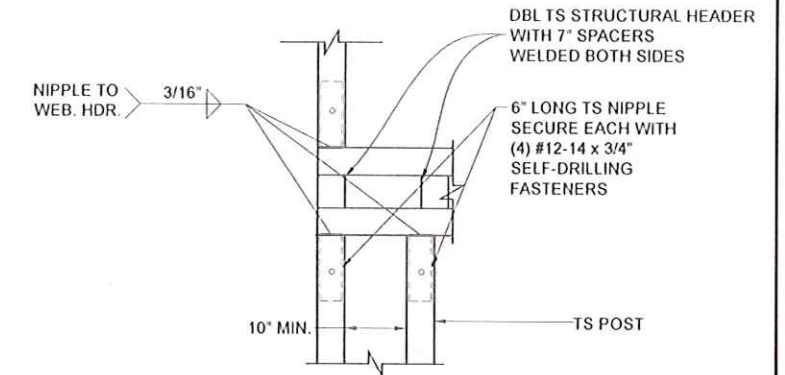
7 END POST/RAFTER CONN. DETAIL

Not To Scale



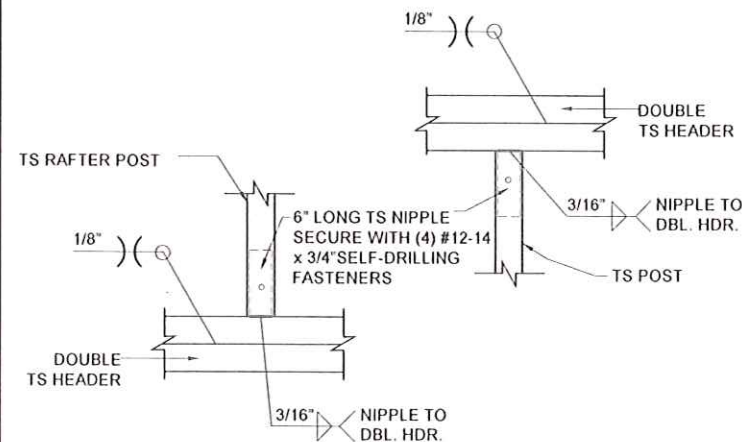
8A RAFTER POST/DBL. HEADER DETAIL

Not To Scale



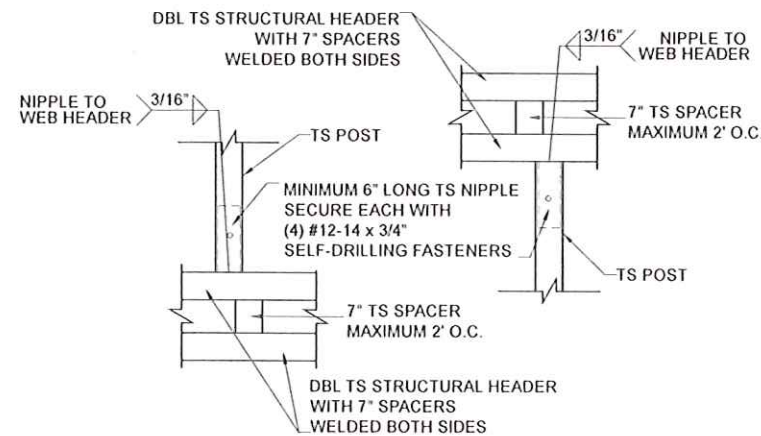
8B RAFTER POST/WEB HEADER DETAIL

Not To Scale



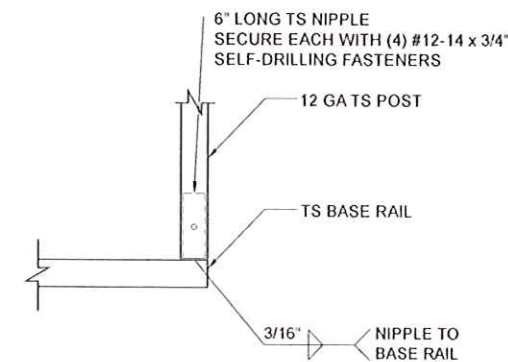
9A DBL. HEADER TO RAFTER POST DETAIL

Not To Scale



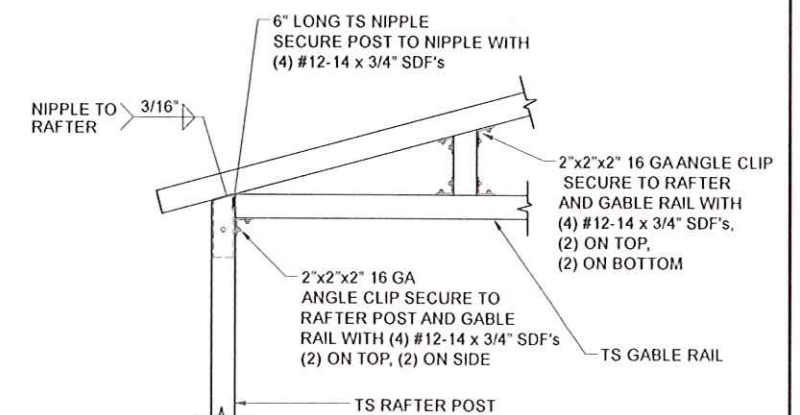
9B STRUCTURAL HEADER TO POST CONNECTION DETAIL

Not To Scale



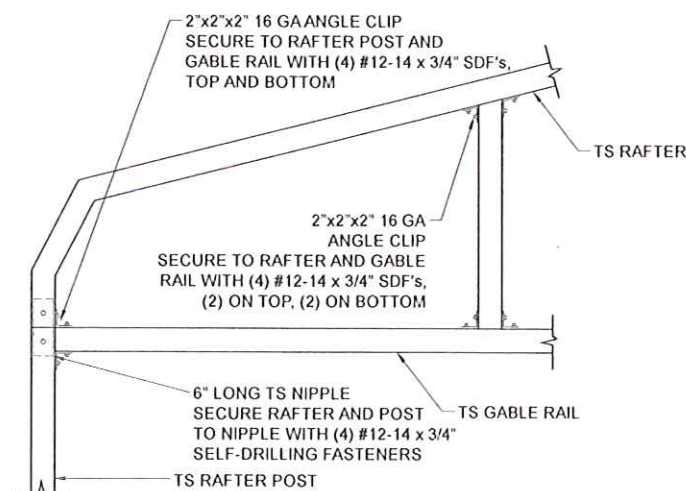
10 FRAMEOUT/ROLL UP POST / BASE RAIL CONN. DETAIL

Not To Scale



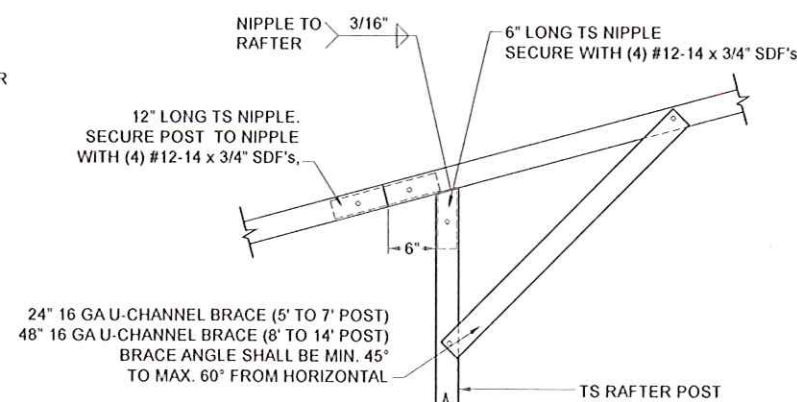
11A GABLE RAIL TO RAFTER POST CONNECTION DETAIL - BOX EAVE

Not To Scale



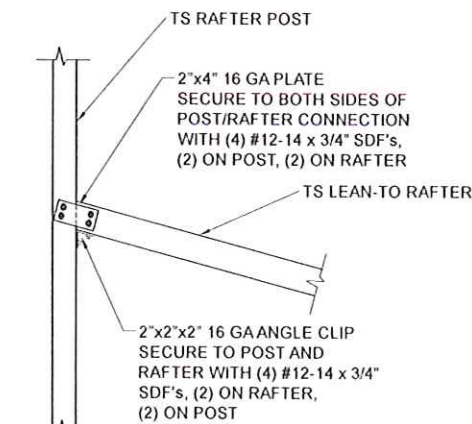
11B GABLE RAIL TO RAFTER POST CONNECTION DETAIL - BOW FRAME

Not To Scale



12 SIDE EXTENSION RAFTER/POST DETAIL

Not To Scale



13 POST / LEAN-TO RAFTER CONN. DETAIL

Not To Scale



BECHTOL ENGINEERING AND TESTING, INC.
605 WEST NEW YORK AVENUE
DELAND, FLORIDA 32720

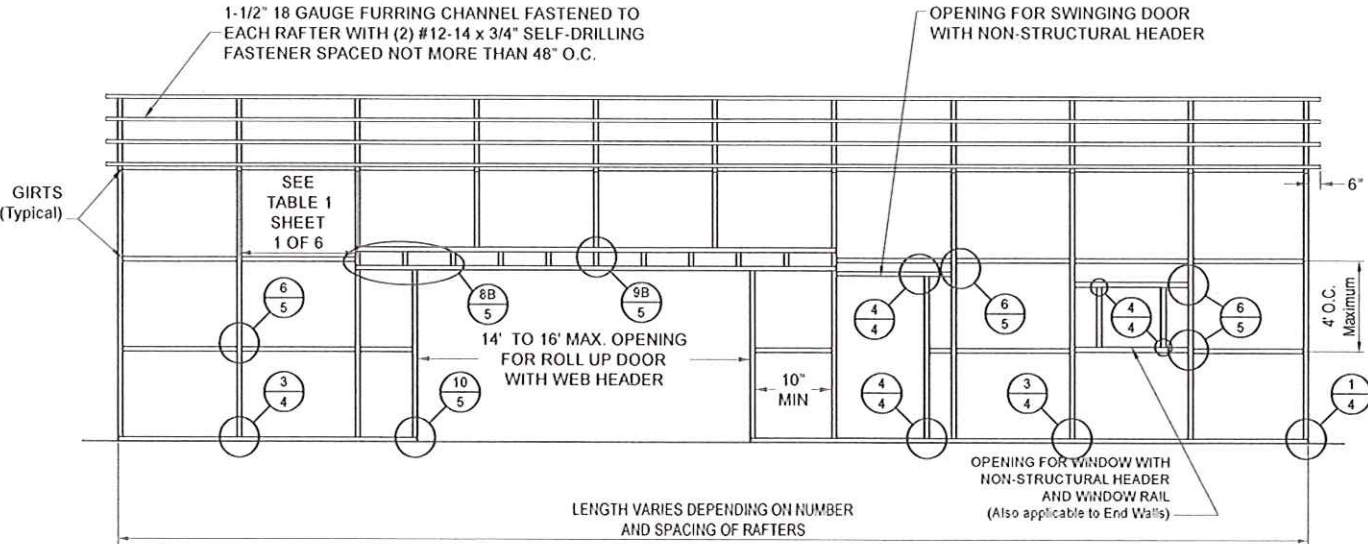
PLEASE NOTE: PLANS EXPIRE MIDNIGHT 12/31/25

CAROLINA CARPORTS, INC.
GENERIC PLANS FOR USE IN THE STATE OF FLORIDA
UP TO 30' WIDE AND RISK CATEGORY I ONLY

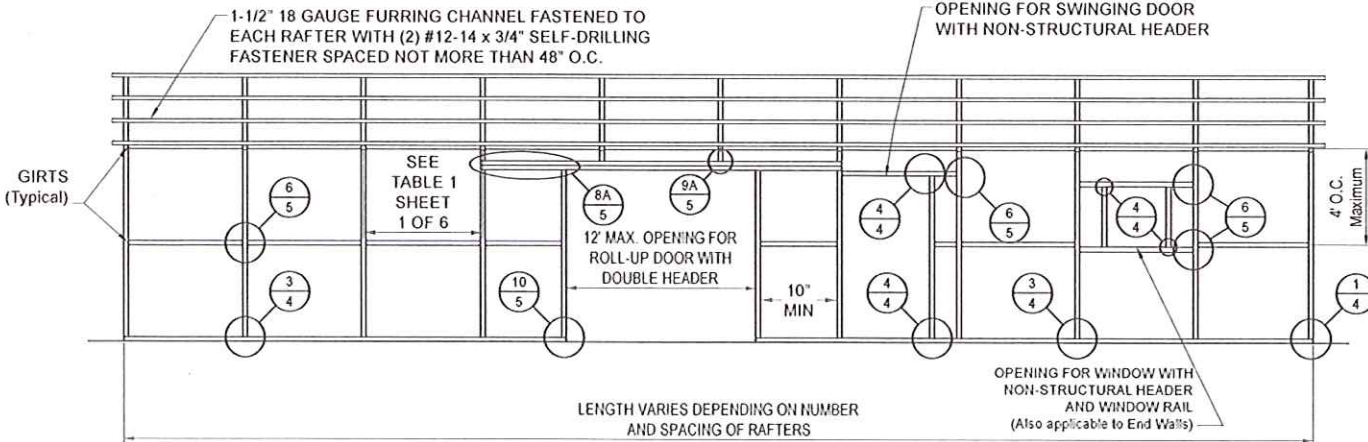
 BECHTOL ENGINEERING AND TESTING, inc. <small>CONSULTING GEOTECHNICAL, ENVIRONMENTAL, AND MATERIALS TESTING ENGINEERS Certificate of Authorization No. 00005492</small>	REVISED	DATE	1/2/2025	
	DRAWN	CS	SCALE	NTS
	CHECKED	CS / ID	PROD NO	G25001
	APPROVED	TB / LP / ID	SHEET 5 OF 6	

CONSULTING GEOTECHNICAL, ENVIRONMENTAL, AND MATERIALS TESTING ENGINEERS
Certificate of Authorization No. 00005492

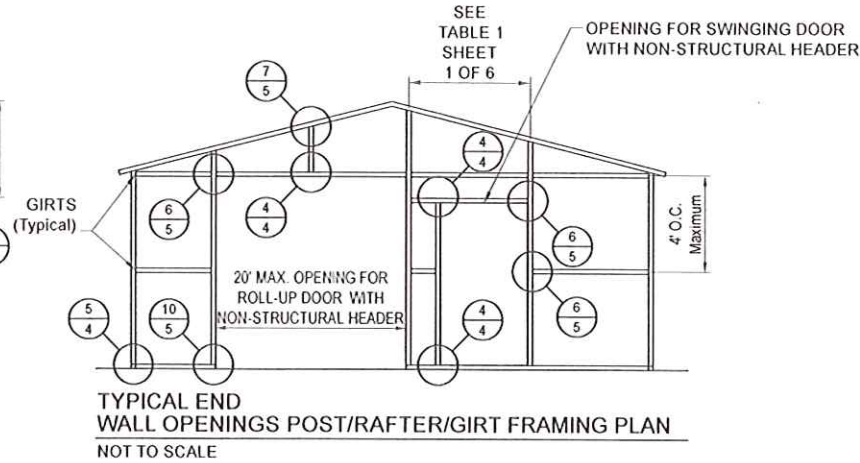
VERTICAL SIDE OPTION



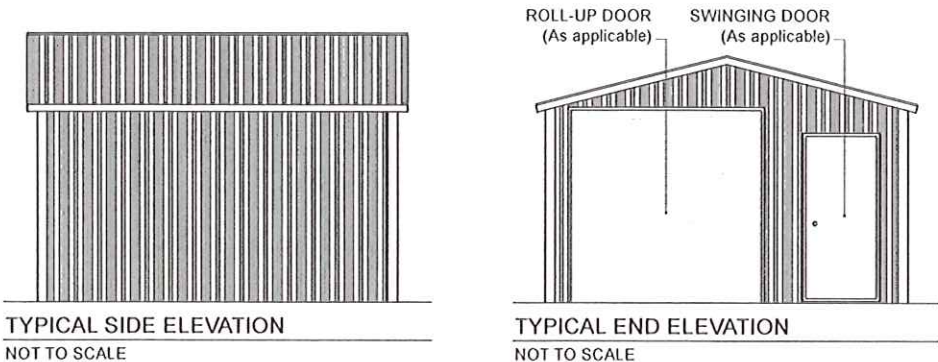
TYPICAL POST/RAFTER/GIRT FRAMING PLAN (14' TO 16' WIDE MAX. OPENING)
NOT TO SCALE



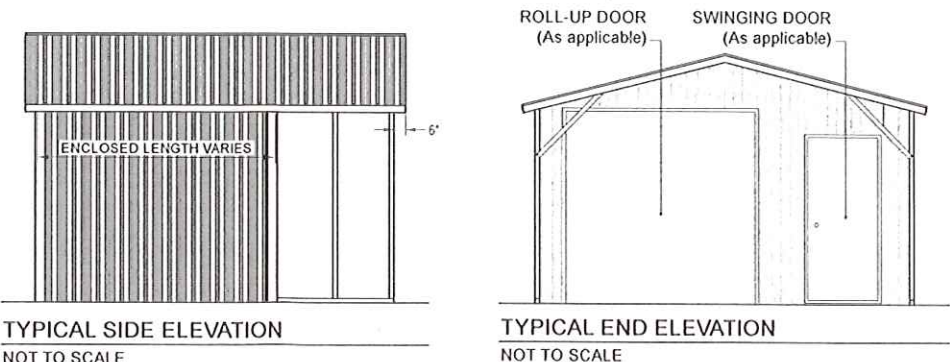
TYPICAL POST/RAFTER/GIRT FRAMING PLAN (12' WIDE MAX. OPENING)
NOT TO SCALE



BOX EAVE FRAME RAFTER ENCLOSED BLDG - VERTICAL SIDES

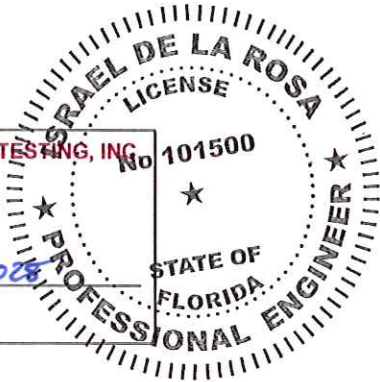


BOX EAVE FRAME RAFTER PARTIALLY OPEN / ENCLOSED BLDG - VERTICAL SIDES



BECHTOL ENGINEERING AND TESTING, INC.
605 WEST NEW YORK AVENUE
DELAND, FLORIDA 32720

1/2/2025



PLEASE NOTE: PLANS EXPIRE MIDNIGHT 12/31/25

CAROLINA CARPORTS, INC.
GENERIC PLANS FOR USE IN THE STATE OF FLORIDA
UP TO 30' WIDE AND RISK CATEGORY I ONLY

BECHTOL ENGINEERING
AND TESTING, Inc.
CONSULTING GEOTECHNICAL, ENVIRONMENTAL, AND MATERIALS TESTING ENGINEERS
Certificate of Authorization No. 0005592

REVISED	DATE	1/2/2025
DRAWN	CS	SCALE
CHECKED	CS / ID	PROJ NO
APPROVED	TB / LP / ID	SHEET 6 OF 6