

[illegible]

S-1 SCALE: 1/4"=1'-0"



Diagram illustrating the dimensions and overhangs for a 40' x 80' x 12' 4/12 Pitch Pole Barn. The diagram shows the overall footprint (40' x 80') and the internal clear dimensions (36' x 76'). The overhangs are specified as 18' on the eaves and 24' on the gable ends.

Dimensions and Overhangs:

- Overall Width: 40'
- Overall Length: 80'
- Internal Clear Width: 36'
- Internal Clear Length: 76'
- Overhang on Eaves: 18'
- Overhang on Gable Ends: 24'

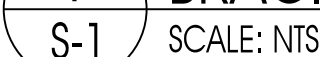
Internal Dimensions (Clear Span and Clear Length):

- Clear Span: 36'
- Clear Length: 76'

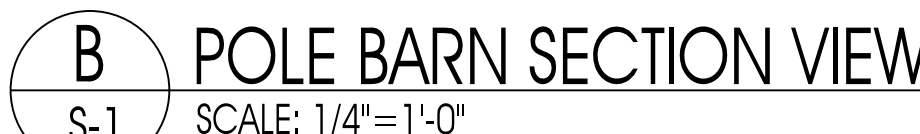
Structural Details:

- 40' x 80' x 12' 4/12 Pitch Pole Barn
- 18' OVERHANG ON EAVES
- 24' OVERHANG ON GABLE ENDS

S-1 SCALE: NTS



G OPTIONAL CONCRETE FOUNDATION
S-1 SCALE: NTS



1. ALL CONCRETE WORK SHALL BE 3,000 P.S.I. AT 28 DAYS.
2. MINIMUM SOIL BEARING SHALL BE ASSUMED AT 2,000 P.S.F.
3. ALL CONSTRUCTION SHALL BE PROVIDED IN ACCORDANCE WITH THE FLA. BLDG. CODE 2017 6TH EDITION, AND ASCE 7-10 WIND CODES FOR AN ULTIMATE WIND SPEED OF 140 MPH AND GREATER.
4. ALL WIND SPEEDS SHALL BE BASED ON THE DESIGN WIND SPEEDS UP TO AND INCLUDING 160 MPH ULTIMATE WIND SPEED.
5. ALL SIDING AND ROOFING TO MINIMUM OF 29 GAUGE ATTACHED TO THE COLUMNS AS SHOWN AND CONSIDERED TO BE A MIN. OF 3 SPAN.
6. FOR ZONE LOCATIONS SEE FBC FIGURE 1609(c). THE VALUE OF "a" SHALL BE 3'-0". FOR ZONE LOADING SEE COMPONENTS AND CLADDING LOADING CHARTS THIS SHEET.
7. DESIGN LOADINGS:
 - DEAD LOAD = 8 PSF
 - ROOF LIVE LOAD = 20 PSF
 - WIND LOAD = PER TABLE
8. DOOR AND WINDOW DATA: SEE TABLE THIS SHEET.
9. ALL WINDOWS AND MAIN DOORS MAY USE 1/4"x1" LONG TEK SCREWS IN LIEU OF THE 1/2" DIA. SCREWS WHEN CONNECTING THE UNITS TO METAL FRAME. FOLLOW THE MANUFACTURERS SPECIFICATIONS FOR LOCATING CONNECTORS.
10. TYPE OF CONSTRUCTION TYPE II-B
11. BUILDING CATEGORY II
12. ADDITIONAL BRACES REQUIRED ONLY REQUIRED WITH WIND SPEEDS GREATER THAN OR EQUAL TO 150 MPH OR AS CALLED OUT ON PLANS.
13. ALL WELDS ARE CONTINUOUS WELDS DONE AT THE FACTORY.

THESE PLANS WERE DESIGNED FOLLOWING THE 2017 6TH EDITION FLORIDA BUILDING CODE AND ASCE 7-10, INCLUDING CHAPTER 16 ON STRUCTURAL DESIGN. THIS STRUCTURE HAS BEEN DESIGNED WITH AN MINIMUM ULTIMATE WIND SPEED OF 140 MPH, (3 SECOND GUST) IN WIND EXPOSURE CATEGORY "C". THIS STRUCTURE HAS BEEN DESIGNED AS RISK CATEGORY II. THE COMPONENTS AND CLADDING WERE DESIGNED BASED THE INCLUDED TABLE DESIGN PRESSURES.

WOJTUNIAK

ICHAEL WOJTUNIAK, P.E.
E. NO. 60934
4401 / michaelwojtuniak.net

DATE: 5-7-2020

*****THIS ITEM HAS BEEN DIGITALLY SIGNED AND SEALED BY MICHAEL J. WOUTJIAK, P.E. FOR ONE SITE SPECIFIC PROJECT ONLY. PRINTED COPIES OF THIS DOCUMENT ARE NOT CONSIDERED SIGNED AND SEALED AND THE SIGNATURE MUST BE VERIFIED ON ANY ELECTRONIC COPIES, UNLESS THE RAISED SEAL HAS BEEN UTILIZED. ***