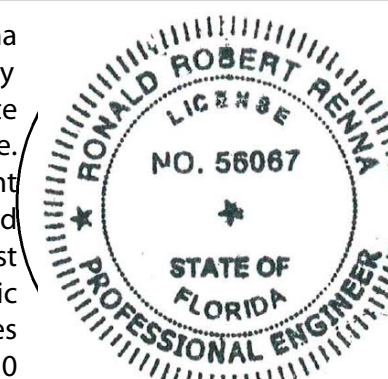


PERMIT SUBMITTAL

Ronald R Renna
This item has been electronically
signed and sealed on the date
shown using a digital signature.
Printed copies of this document
are not considered signed and
sealed and the signature must
be verified on any electronic
copies.
'00/04- 15:20:57 2022/10/20



WCGArchitecture

A26004016 • 7416 hatteras drive • hudson, florida 34667 • 727.534.5091

Revisions

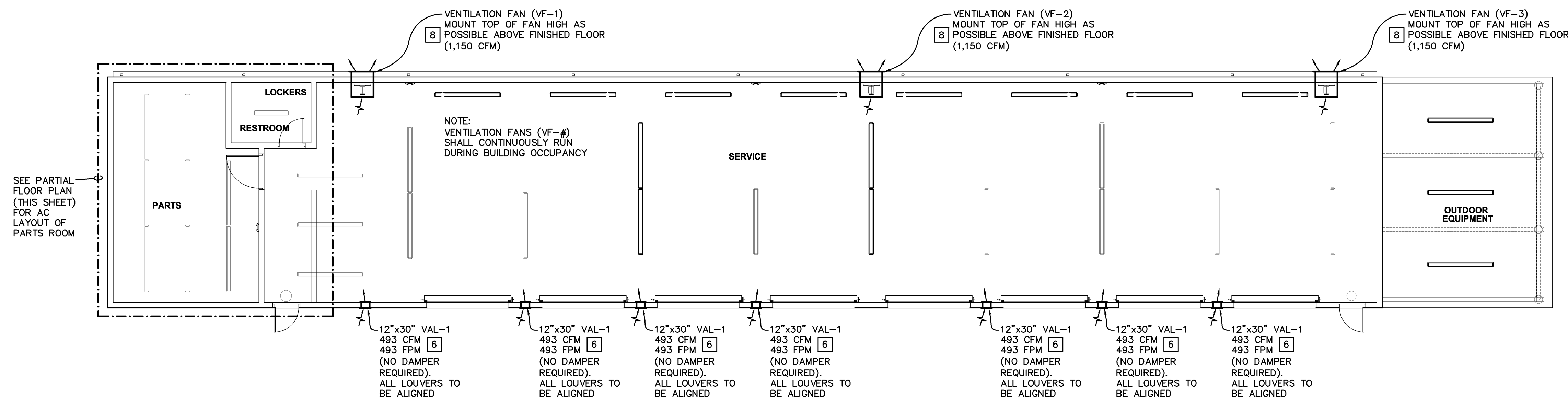
Rountree - Moore KIA
- Service Department Addition -

2528 W. US Highway 90 - Lake City, Florida 32055

MECHANICAL
FLOOR PLAN

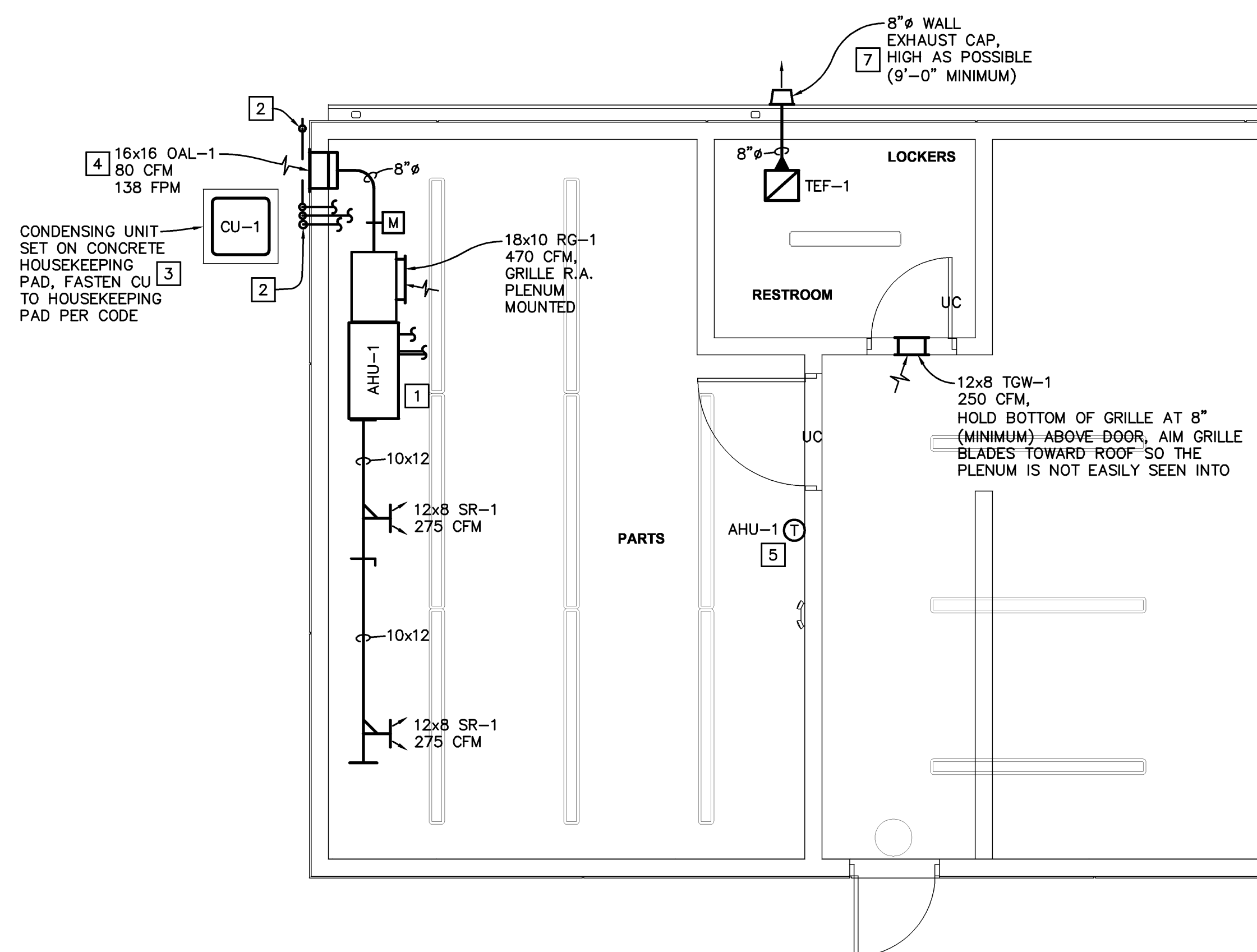
Project number
Date

M - 1.01



MECHANICAL FLOOR PLAN – SERVICE VENTILATION

22078



MECHANICAL FLOOR PLAN – PARTS ROOM AC

22076

MECHANICAL HVAC NOTES:

- 1 AIR HANDLING UNIT IS HUNG FROM STRUCTURE (HORIZONTAL APPLICATION) OVERHEAD/HIGH AS POSSIBLE AND SHALL HAVE A SECONDARY DRAIN PAN AND FLOAT SWITCH. AIR HANDLING UNIT TO BE PLACED WHERE SERVICE ACCESS CAN BE OBTAINED, PROVIDE MANUFACTURER'S RECOMMENDED SERVICE CLEARANCES. SEE "SPLIT SYSTEM A/C SCHEDULE" ON SHEET M-2.01 & DETAILS ON SHEET M-3.01 FOR FURTHER INFORMATION.
- 2 REFRIGERANT LINE SET/PIPING AND 3/4" CONDENSATE DRAIN LINE (AFTER P'TRAP) ROUTED OVERHEAD TO /THRU EXTERIOR WALL, THEN ROUTED DOWN ALONG EXTERIOR WALL. CONNECT REFRIGERANT LINE SET TO MATCHING CONDENSING UNIT AND ROUTE CONDENSATE DRAIN LINE TO SPILL ON GRADE/SPLASH BUCK WITH AIR GAP (DRAIN TO BE LOCATED IN A NON-NUISANCE AREA, INDIRECT WASTE). PROVIDE/INSTALL SHEETMETAL COVER, FASTEN COVER TO WALL PER CODE AND SEAL ALL/ANY OPENINGS WEATHER TIGHT, PAINT COVER TO MATCH EXTERIOR BUILDING COLOR.
- 3 CODE REQUIRED WEATHER TIGHT DISCONNECT SWITCH BY ELECTRICAL, COORDINATE AS REQUIRED.
- 4 OUTSIDE AIR LOUVER (OAL), "GREENHECK" MODEL ESD-635DE HAS A FREE AREA OF 0.58 SQ.FT., FLORIDA PRODUCT APPROVED (FL19675) AND MIAMI-DADE APPROVED (20-0929.07) LOUVER IS ALUMINUM HORIZONTAL BLADE WITH 6" FRAME (VERIFY DEPTH AVAILABILITIES W/MANUFACTURER). PROVIDE/INSTALL LOUVER WITH INSECT SCREEN AND DRAIN BLADE(S), FINAL FACTORY FINISH/COLOR OF LOUVER BY ARCHITECT, COORDINATE WITH OWNER/ARCHITECT AS REQUIRED. HOLD/MOUNT TOP OF OUTSIDE AIR LOUVER HIGH AS POSSIBLE ABOVE FINISHED FLOOR.
- 5 PROPOSED LOCATION FOR AHU/CU THERMOSTAT, RELOCATE AS/IF REQUIRED, FINAL LOCATION OF T'STATS BY OWNER. COORDINATE LOCATIONS WITH OTHER TRADES AS REQUIRED.
- 6 VENTILATION AIR LOUVER (VAL), "GREENHECK" MODEL ESD-635DE HAS A FREE AREA OF 1.00 SQ.FT., FLORIDA PRODUCT APPROVED (FL19675) AND MIAMI-DADE APPROVED (20-0929.07) LOUVER IS ALUMINUM HORIZONTAL BLADE WITH 6" FRAME (VERIFY DEPTH AVAILABILITIES W/MANUFACTURER). PROVIDE/INSTALL LOUVER WITH INSECT SCREEN AND DRAIN BLADE(S), FINAL FACTORY FINISH/COLOR OF LOUVER BY ARCHITECT, COORDINATE WITH OWNER/ARCHITECT AS REQUIRED. HOLD/MOUNT BOTTOM CODE OF VENTILATION AIR LOUVER 12" ABOVE FINISHED FLOOR.
- 7 WALL EXHAUST CAP/HOODED WALL VENT (FAMCO OR CODE APPROVED EQUAL), WITH INSECT SCREEN AND SPRING LOADED BACKDRAFT DAMPER. PAINT TO MATCH EXTERIOR BUILDING COLOR. FIELD COORDINATE HEIGHT AS REQUIRED. FLASH AND SEAL/FOAM WALL PENETRATIONS WEATHER TIGHT.
- 8 SIDEWALL CAST ALUMINUM BELT DRIVE PROP. VENTILATION FAN (MOTOR ACCESS FROM INT. OF BUILDING) WITH HOUSING AND OSHA FAN GUARD, SEE "FAN SCHEDULE" ON SHEET M-2.01 FOR FURTHER INFORMATION. MOUNT/HOLD TOP OF FAN HOUSING AS HIGH AS POSSIBLE ABOVE FINISHED FLOOR, ALL FANS SHALL BE ALIGNED. PAINT EXTERIOR OF FAN/GRAVITY DAMPER TO MATCH BUILDING'S EXTERIOR COLOR, COORDINATE WITH ARCHITECTURAL AS REQUIRED.

Renna Enterprises, Inc.

P.E. # 56067
AUTH. # 00008631

3231 Drane Field Road Ph. (863) 646 1258
Lakeland, FL 33811 Fax. (863) 646 8888

M - 2.01

