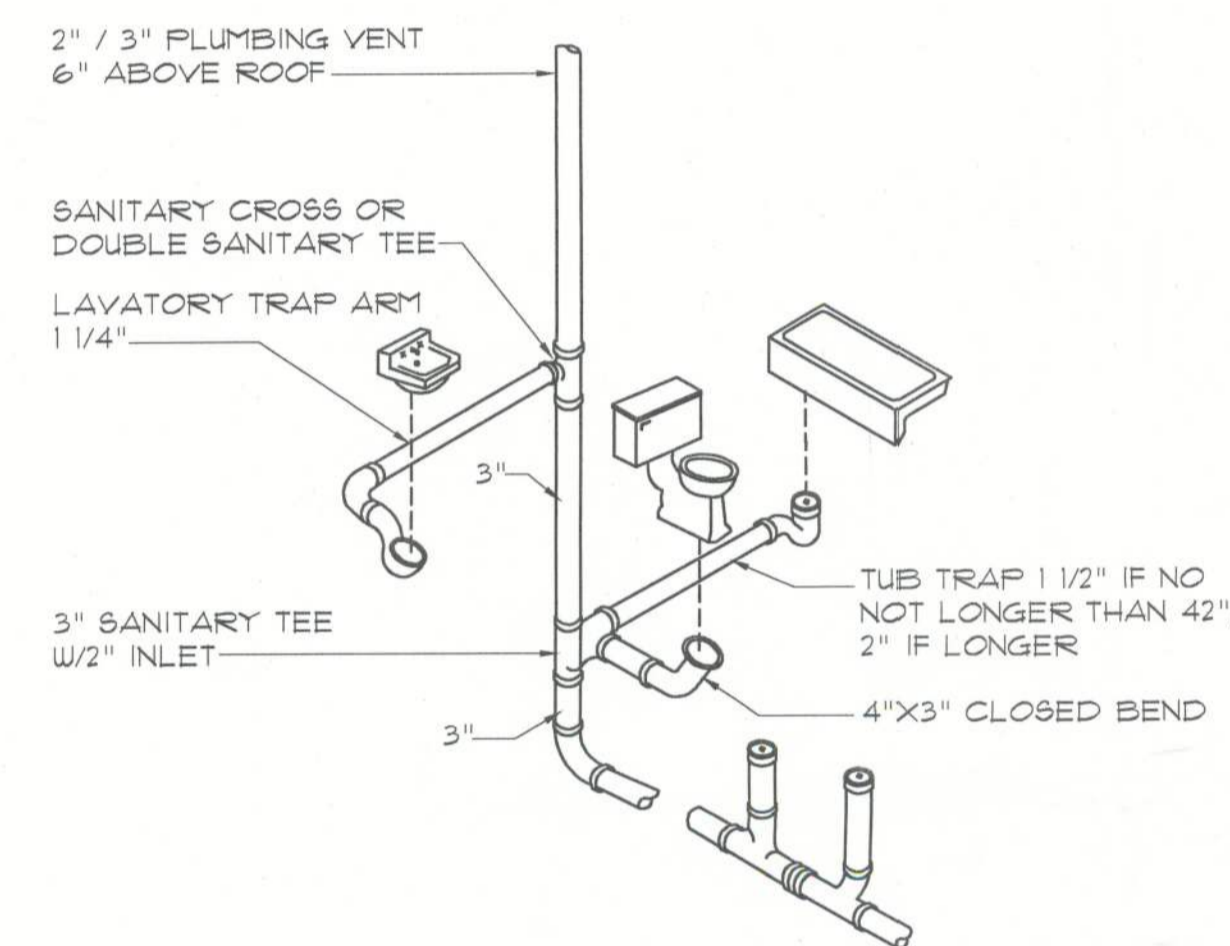


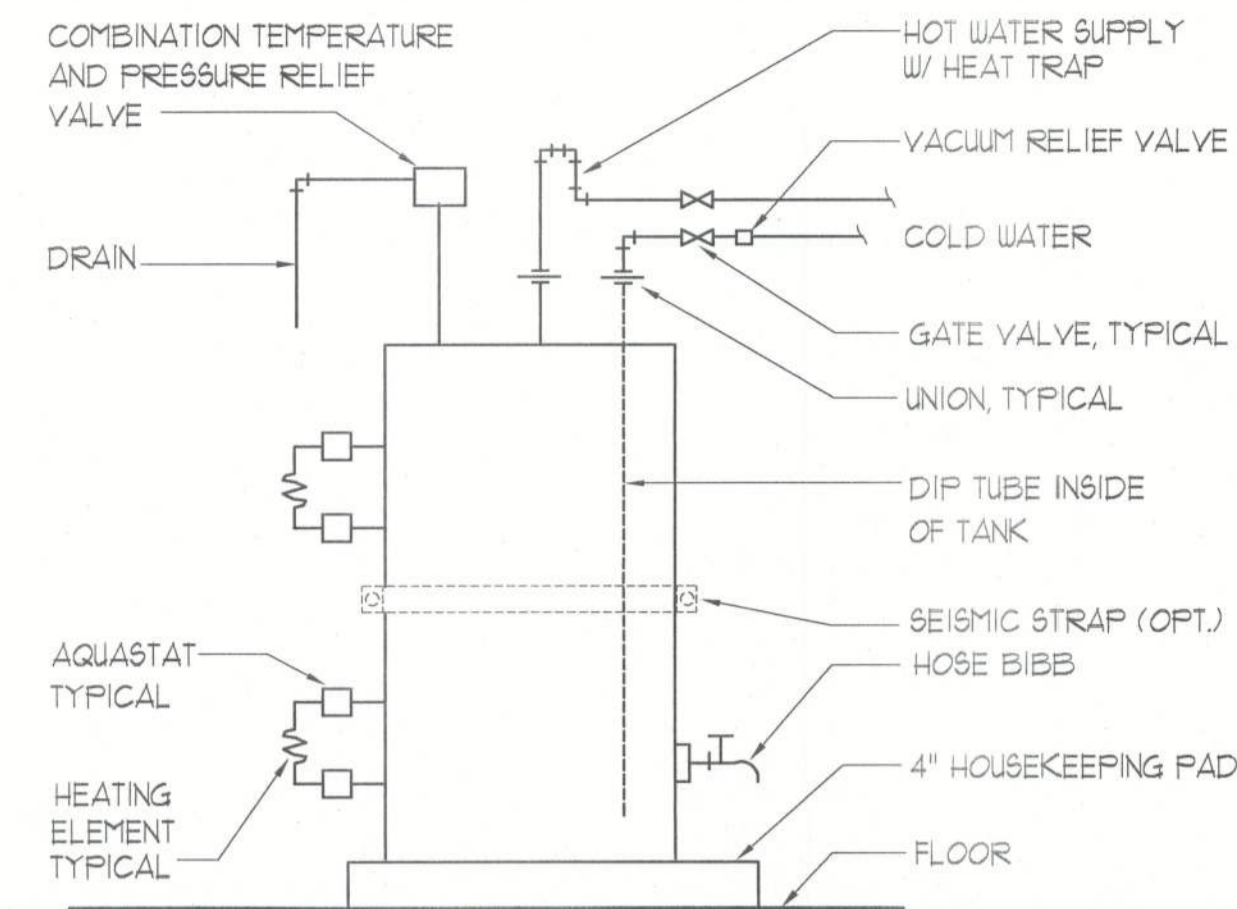
Closet Rod & Shelf Detail

SCALE: NONE



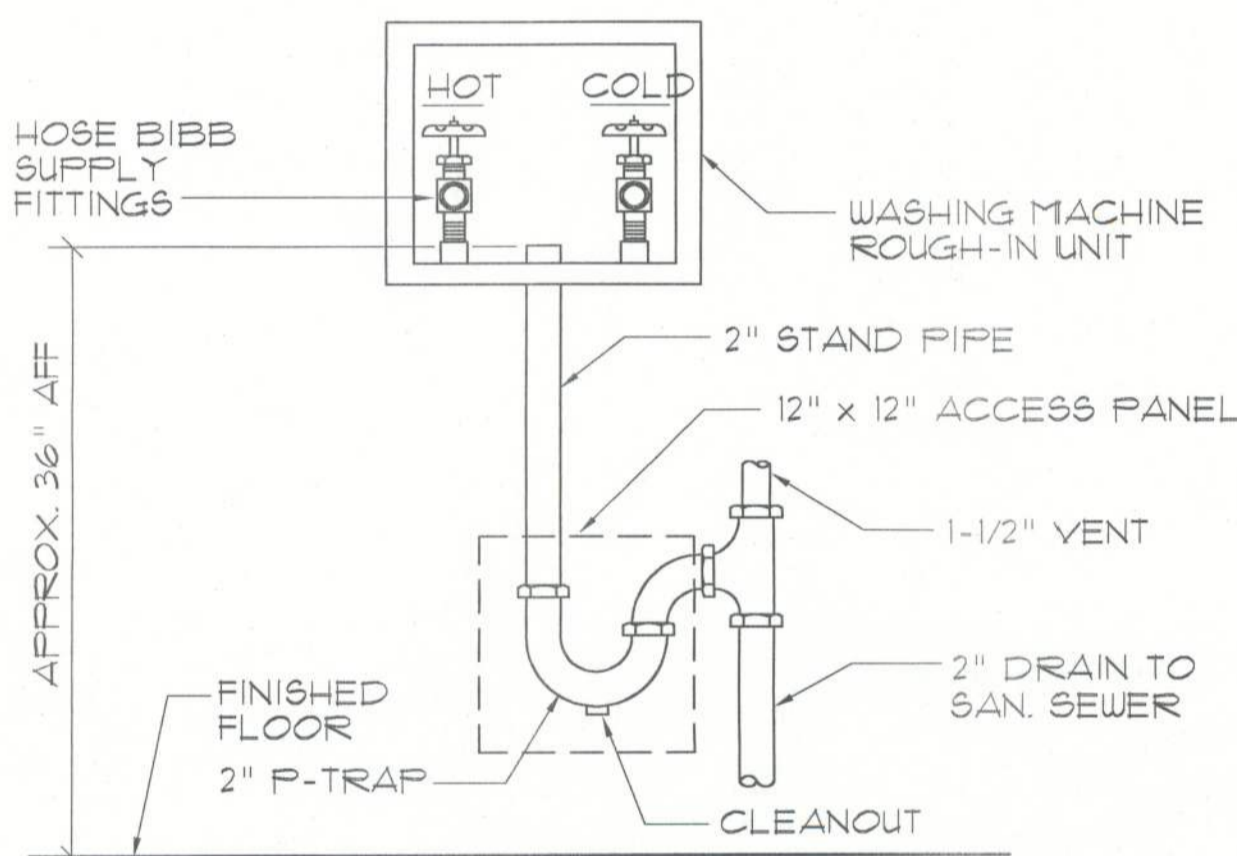
Typ. One Bath Plumbing DET.

N.T.S.
N.T.S. - THIS PLUMBING DIAGRAM IS GENERAL IN NATURE, REFER TO THE 'PLUMBING RISER DIAGRAM' FOR INFORMATION.



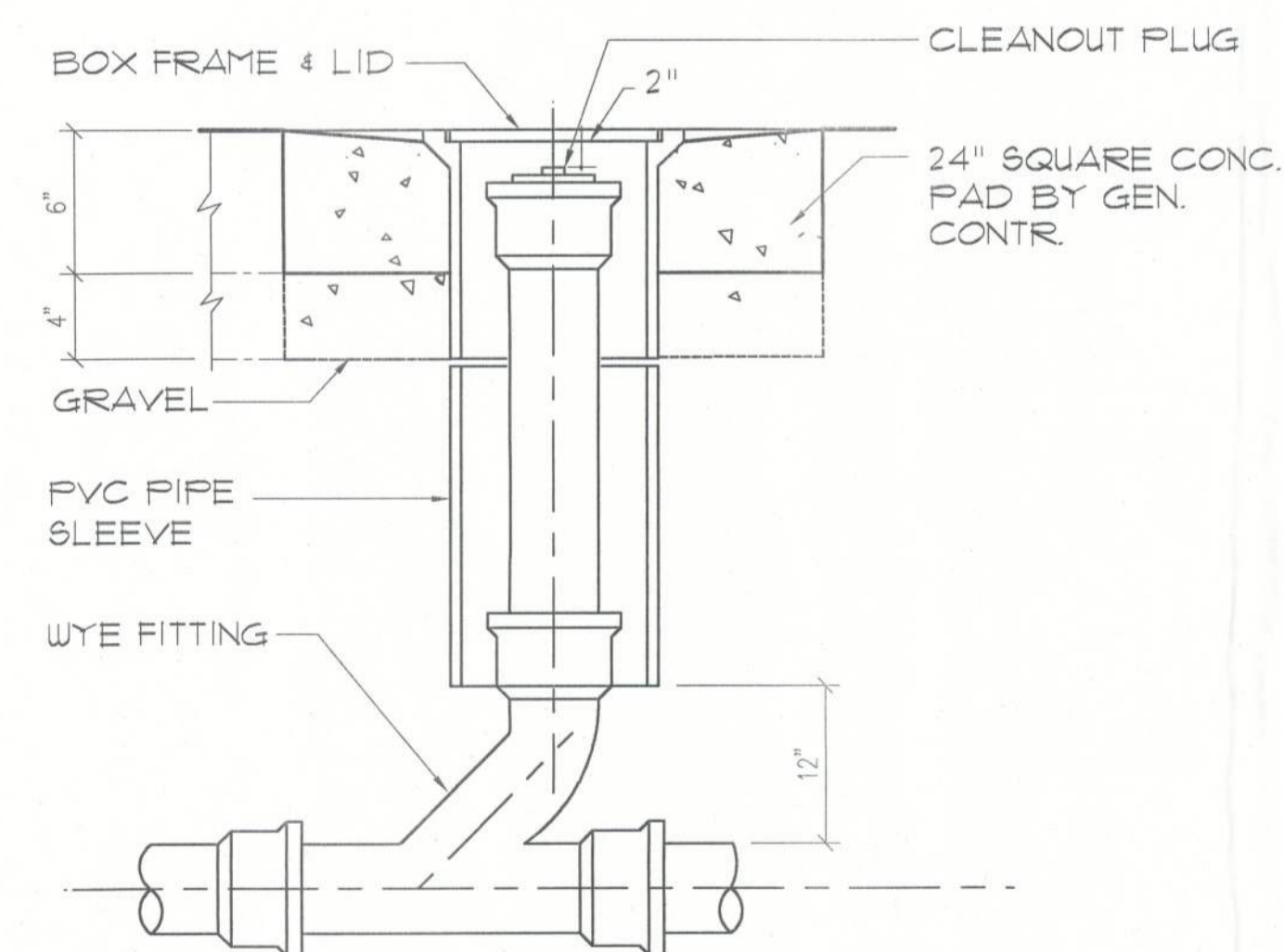
Electric Water Heater DETAIL

SCALE: NONE



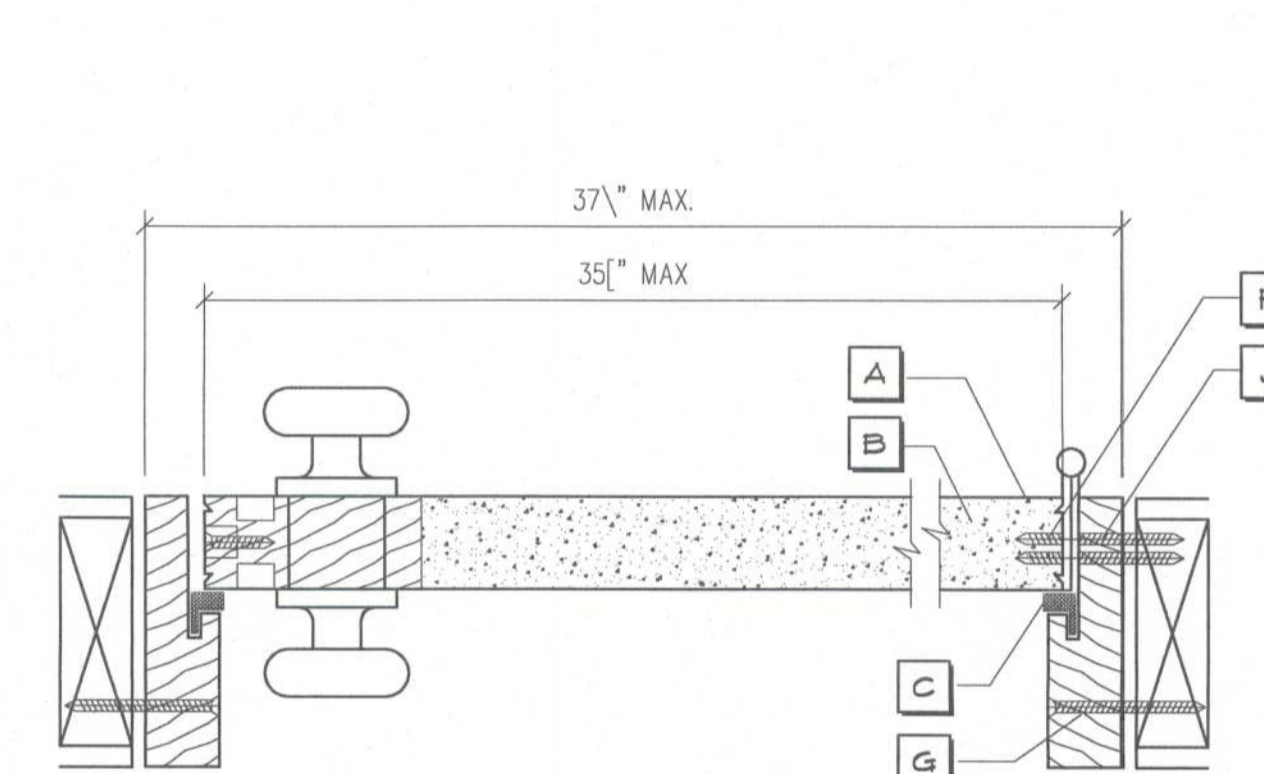
Washing Machine Hook-up DET.

N.T.S.



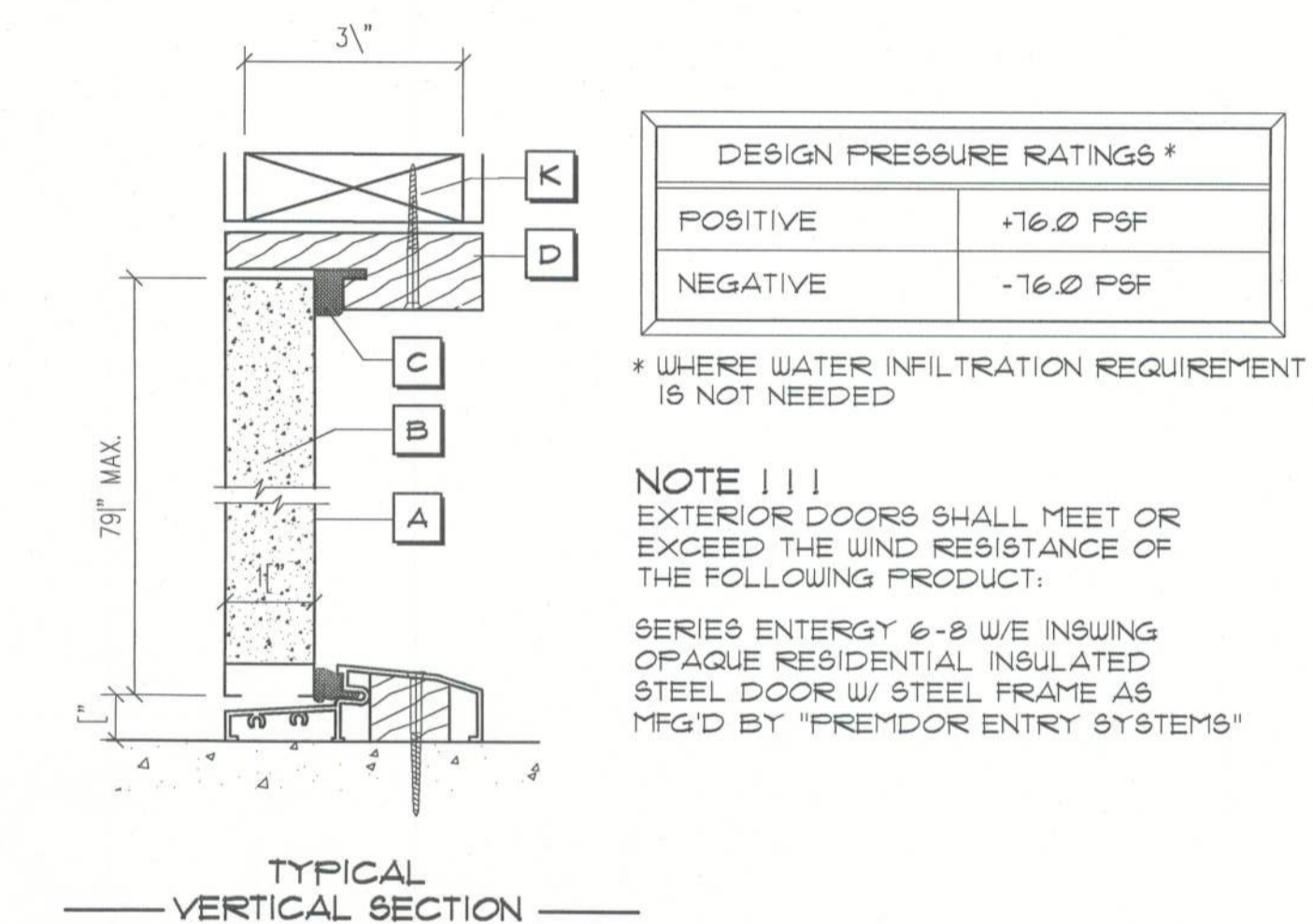
Outdoor Cleanout DETAIL

N.T.S.



HORIZONTAL SECTION - SINGLE DOORS

NOTE, VERIFY ROUGH OPENING DOOR REQUIREMENTS PRIOR TO CONSTRUCTION.



TYPICAL VERTICAL SECTION

DESIGN PRESSURE RATINGS *	
POSITIVE	+16.0 PSF
NEGATIVE	-16.0 PSF

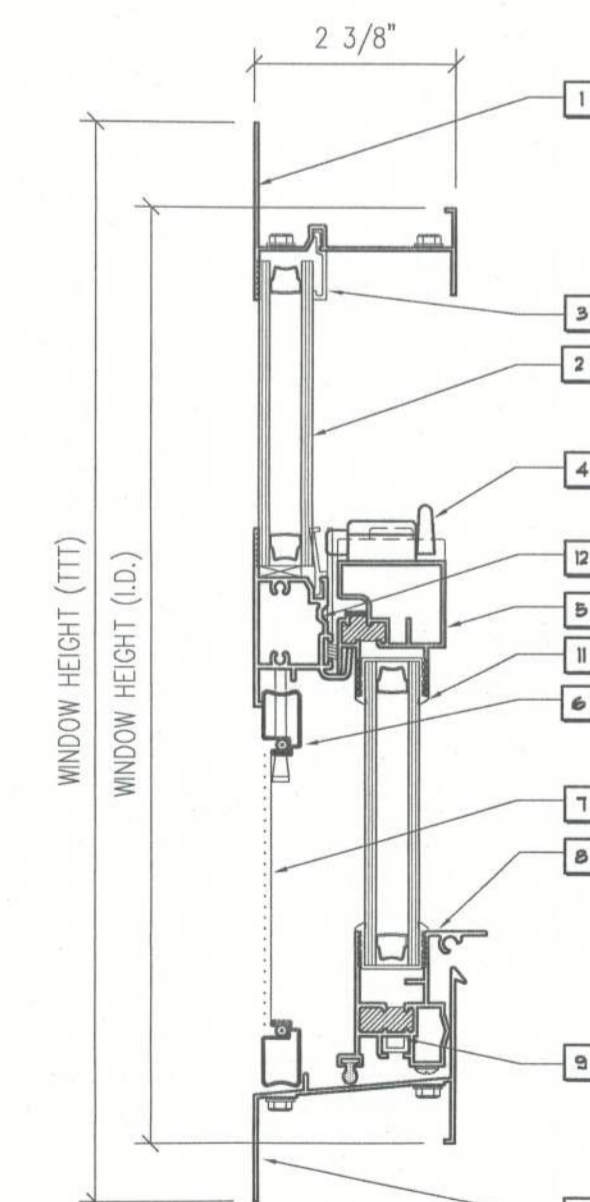
* WHERE WATER INFILTRATION REQUIREMENT IS NOT NEEDED

NOTE !!!
EXTERIOR DOORS SHALL MEET OR EXCEED THE WIND RESISTANCE OF THE FOLLOWING PRODUCT:

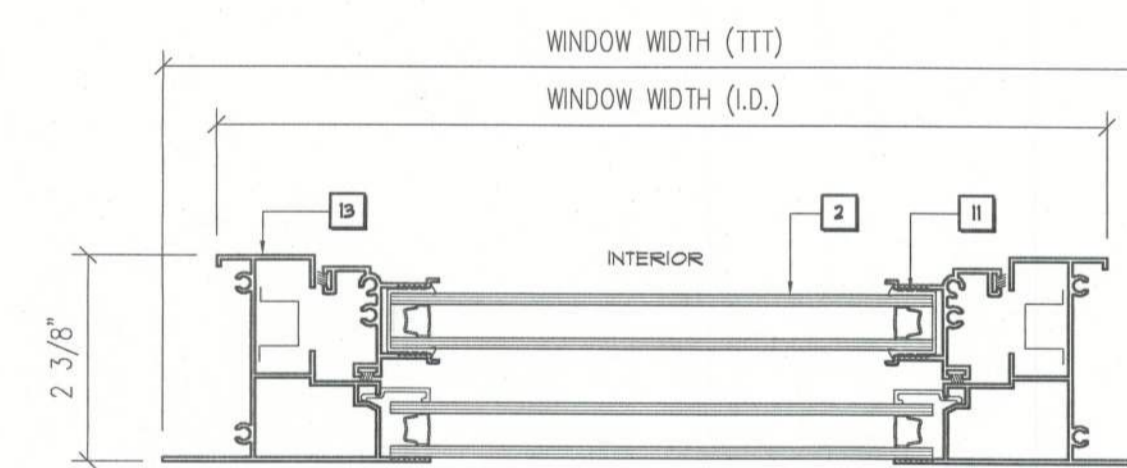
SERIES ENTERGY 6-8 W/ INSULING OPAQUE RESIDENTIAL INSULATED STEEL DOOR W/ STEEL FRAME AS MFG'D BY "PREMDOR ENTRY SYSTEMS"

Exterior Door DETAILS

SCALE: NONE



VERTICAL SECTION - SINGLE HUNG WINDOW



HORIZONTAL SECTION - SINGLE HUNG WINDOW

INSTALLATION	MODEL
1" ROOF'G. NAILS # 6" FROM CORNERS, 18" O.C.	SERIES 450
5 - 1" ROOF'G. NAILS EA. FLANGE, MAX. 18" O.C.	SERIES 650

NOTE !!!
ALL WINDOWS ARE INSULATED AND LEATHERSTRIPPED AS MANUFACTURED BY "HIL HOME PRODUCTS, INC." - OTHER MANUFACTURERS/PRODUCTS SHALL BE CONSIDERED AS EQUAL IF THEIR WIND DESIGN PERFORMANCE MEETS OR EXCEEDS THESE UNITS.
NOTE, VERIFY ROUGH OPENING WINDOW REQUIREMENTS PRIOR TO CONSTRUCTION.
N1 - COMPLETE WITH PAN LITE AS PER SERIES 450
N2 - TESTING AS PER ASTM E1300

Window Notes

- 1 FLANGED HEAD
- 2 INSULATED GLASS
- 3 GLAZING BEAD
- 4 LOCK
- 5 SASH TOP RAIL
- 6 SCREEN FRAME
- 7 FIBERGLASS MESH
- 8 BOTTOM SASH RAIL
- 9 PIVOT BAR
- 10 FLANGED SILL
- 11 MARINE GLAZING
- 12 FIXED MEETING RAIL
- 13 FLANGED JAMB

Typ. Window Sash DETAILS

SCALE: NONE

Door Notes

- A STEEL SKIN - 26 GA.
- B POLYURETHANE FOAM CORE
- C COMPRESSION WEATHER STRIP
- D WOOD HEAD JAMB
- E ALUMINUM BUMPER THRESHOLD
- F #10-24 X 1/2" F.H.W.S. (4) SCREWS PER HINGE INTO DOOR
- G #10 X 3" F.H.W.S. (5) SCREWS THROUGH HINGE JAMB, 8" DOWN FROM TOP, MAX. 18" O.C. THEREAFTER
- H NOT USED
- J #10 X 2" F.H.W.S. (4) SCREWS THROUGH EACH HINGE INTO DOOR JAMB.
- K #10 X 2" F.H.W.S. (2) SCREWS THROUGH HEAD INTO HEADER.

REVISION:

Copyright 2006
N.P. Gesler, Architect

DRAWN:

198

CUSTOM RESIDENCE for:
JOHNNY WARD
HILLS OF WINDSOR, COLUMBIA COUNTY, FLORIDA
ARCHITECTURAL DETAILS

NICHOLAS PAUL GESLER ARCHITECT
N.C.A.A. Certified
1756 NW Brown Rd.
Lake City, FL 32055
386-755-9021

DATE:

30 JUN 2006

COMM:

2K633

SHEET:

A.7

1 of 9

01 JUL 2006
AR0007005