

SPECIFIED PVC PIPE SIZE (d)
MIN. SUMP DEPTH 1.5x(d)
MIN. LEDGE DEPTH (d)
- OR -
FOR FIELD BUILT SUMPS SEE PRODUCT INSTALLATION INSTRUCTIONS

DRAIN COVERS & SUMPS a.k.a. SUCTION OUTLET FITTING ASSEMBLIES (SOFA) ANSI/APSP/ICC-16 2017

- FOLLOW THE PRODUCT SPECIFICATIONS AND/OR INSTALLATION INSTRUCTIONS FOR MIN./MAX. SUMP DIMENSIONS, DRAIN COVER/GRATE, AND FRAME FASTENING MEETING MFG'S SOFA CERTIFICATION.
- DO NOT USE POWER TOOLS TO INSTALL FASTENERS**
- FIELD MODIFICATIONS TO ANY SOFA NOT AUTHORIZED BY MFG'S INSTALLATION INSTRUCTIONS SHALL VOID THE SOFA CERTIFICATION
- HAND CHECK COVER/GRATE SNUGNESS TO SUMP/FRAME AFTER INSTALLATION
- SOFA COMPONENTS HELD IN PLACE BY INTERIOR FINISH OF THE POOL SHALL BE FREE OF DETERIORATION AND VOIDS



NOTES:

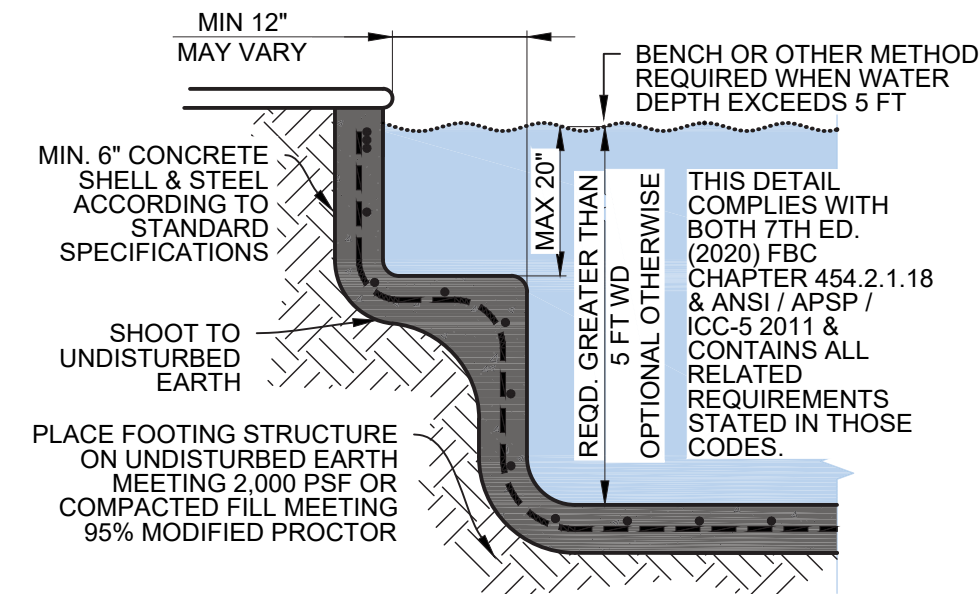
- APPROVED PRODUCT SPECIFICATION MAY DIFFER FROM FIELD BUILT SUMPS SHOWN ON THIS PAGE

ADDITIONAL STRUCTURAL NOTES:

- USE MINIMUM ASTM A815 GRADE 40 STEEL
- LAP #3 BARS MINIMUM 15"
- LAP #5 BARS MINIMUM 25"
- 6" SHELL THICKNESS AND 2-1/2" CONCRETE COVERAGE ARE MINIMUMS
- USE 4,000 PSI CONCRETE
- CONTRACTOR / OWNER REQUIRED TO:
 - CONTACT ENGINEER IF POOL NOT PLACED ON UNDISTURBED AND DE-WATERED EARTH THAT CAN MEET 2,000 PSF BEARING CAPACITY.
 - WHEN BURIED DEBRIS IS ENCOUNTERED OR QUESTIONABLE CONDITIONS ARE INDICATED AT THE WORK SITE PRIOR / DURING CONSTRUCTION, A SUBSURFACE CONSULTANT SHALL CONDUCT BORING(S) IN THE AREA OF THE POOL TO CONFIRM SOIL BEARING CAPACITY, CLEAR OF BURIED DEBRIS, & VERIFYING GROUND WATER LEVEL
 - ALL MODIFIED SOILS & EARTH FILL UNDER PERSPECTIVE POOL AREA SHALL MEET A SOIL DENSITY AND COMPACTION MINIMUM OF 95% MODIFIED PROCTOR WITHOUT SETTLEMENT.

1 POOL DEEP END SECTION

SCALE: N.T.S.

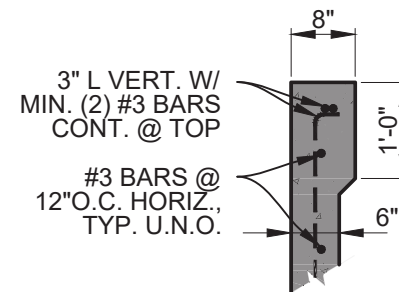


3 BENCH SECTION

SCALE: N.T.S.

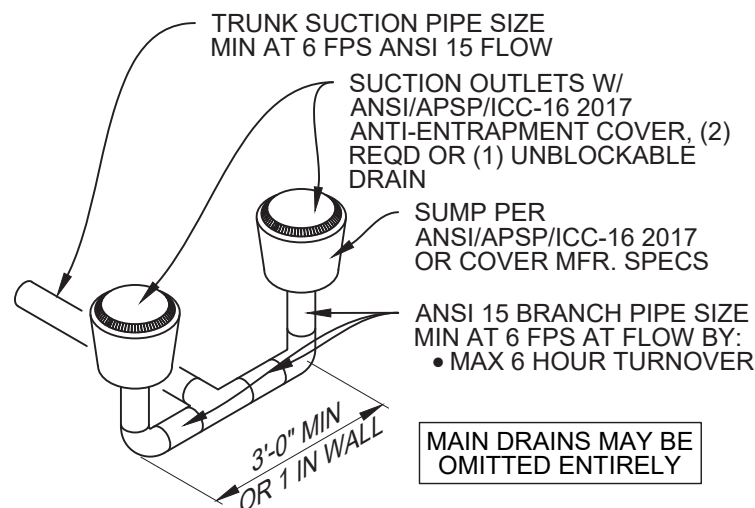
2 FIELD BUILT SUMP

SCALE: N.T.S.



5 POOL BEAM 8"x12" OPTION

SCALE: N.T.S.



4 BRANCH PIPING

SCALE: N.T.S.

NOTE: THIS DETAIL IS FOR MAX 6 FT DEEP SOIL SUPPORTED POOL SHELLS- SEE SUPPLEMENTAL SPECIFICATIONS FOR DEEPER STRUCTURES, LOAD SURCHARGE STRUCTURES, OR APPURTENANT STRUCTURES

COMPLIES WITH 7TH ED. (2020) FBC, ALL VOLUMES

SEE DIGITAL SIGNATURE ON INDEX SHT S1

3990 SR 64 E.
Bradenton, FL 34208
Office: 941-749-0311
C.A. 27189

KIMES ENGINEERING

©2020 Kimes Engineering and Management Services, Inc.
This drawing is the property of Kimes Engineering and Management Services, Inc. & is not to be reproduced or copied in whole or in part. It is only for the project & site specifically identified herein & is not to be used on any other project. It is to be returned upon request.

REV.	DATE	DESCRIPTION
KE_RSTD	DWG BY: MCM	CD BY: JJK
	DRAWING: 01-Jan-21	VERSION: 21-Dec-20

FOR USE IN: CITY OF GAINESVILLE
BY: FUN-STATE POOLS, INC.

TYPICAL SECTIONS
FOR RESIDENTIAL POOL/SPA

EXPIRES 03/15/2022

ORIG. DWG: 17"x11" (ANSI B)

SHEET
S2

SHEET 2 OF 2