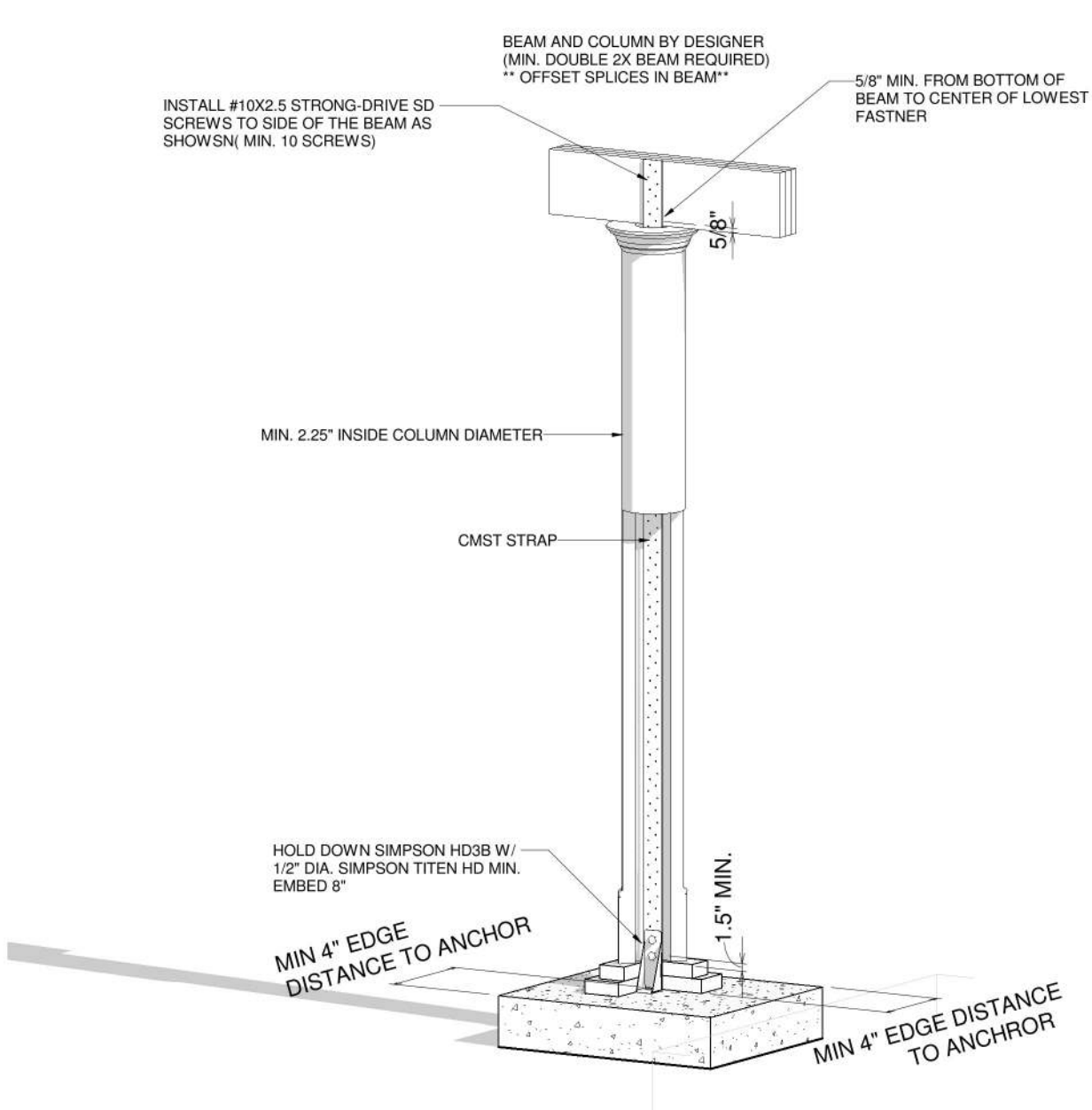


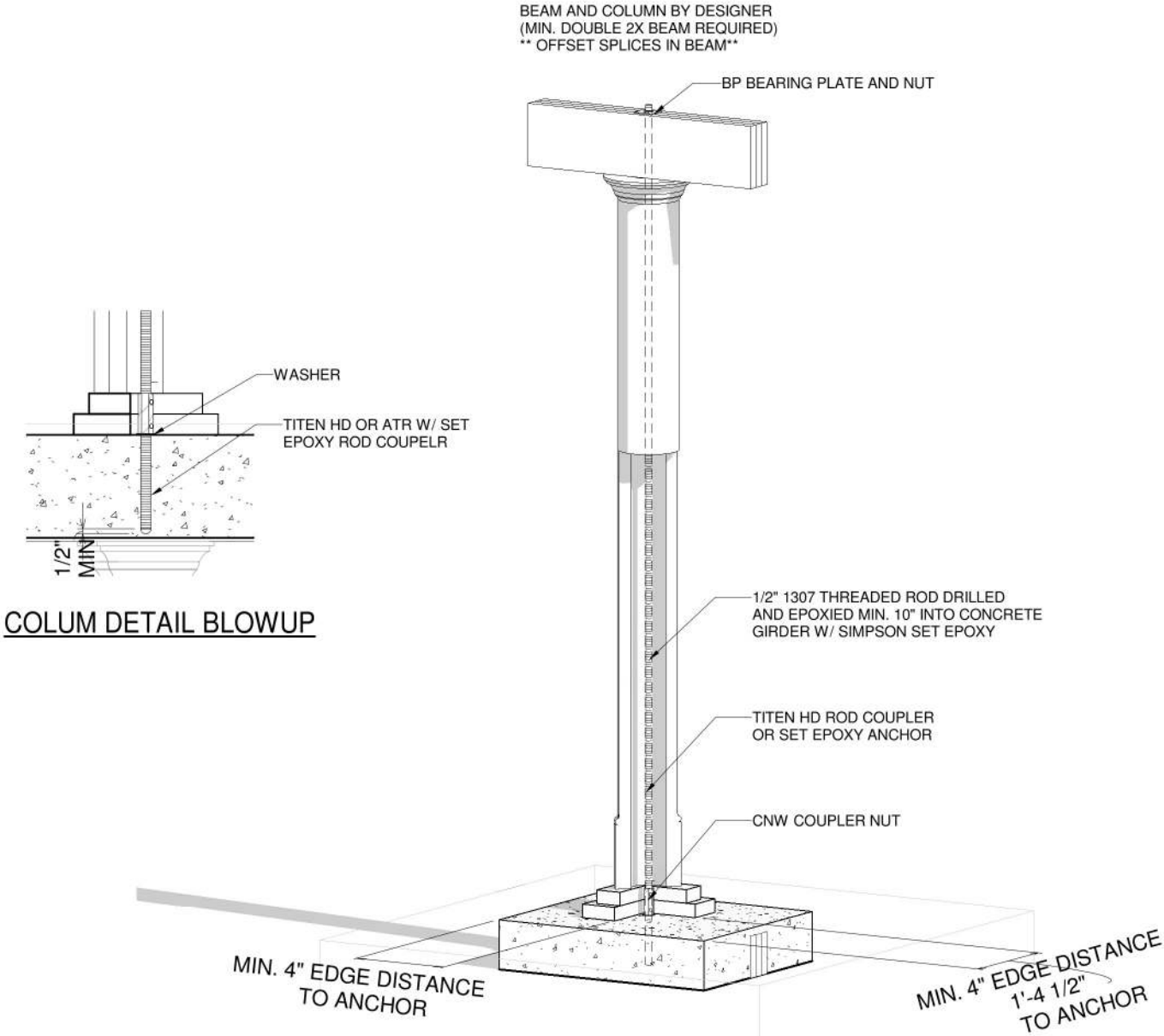


James A Zaleski

Digitally signed by James A Zaleski  
Date: 2021.07.13 09:01:30 -04'00'



1 COLUMN DETAIL



2 COLUMN DETAIL 2

James Zaleski P.E 51544 2305 Haverhill Rd Tallahassee,FI 32312 PH 850-766-7778

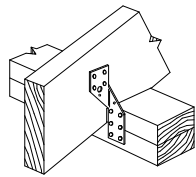
OPT. PAPER SIZE: for 1/4" =1'-0" on 24"x36" PAPER SIZE ENLARGE PRINTS TO 200%  
FINAL CONSTRUCTION PLANS

Revision Schedule		Revision		Revision	
Revision Number	Revision Description	Revision Number	Revision Description	Revision Number	Revision Description
1	FINAL	1	FINAL	1	FINAL

AREAS:		THE:		FOR:	
FIRST FLOOR HEATED	1,296 SF	DOGWOOD 'A'	59-21-017	2x4 EXTERIOR WALLS	MONOSLAB
SECOND FLOOR HEATED	510 SF				
FRONT PORCH	252 SF				
REAR PORCH	240 SF				
TOTAL UNDER ROOF	2,298 SF				

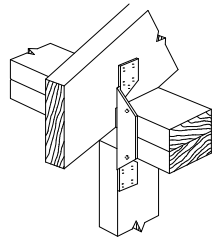
437 S. E. PEACOCK TER. LAKE CITY, FL 32025	OFFICE: GAINESVILLE, FL	SOLD BY: RD
---	-------------------------	-------------

PROPERTY OF:	AMERICA'S HOME PLACE	© COPYRIGHT - 2021
SHEET NUMBER:	S-5	FL-COLUMN HOLD DOWN DETAILS



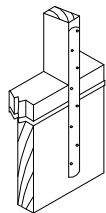
Simpson Strong-Tie  
H2.5

RAFTER WITH NO STUD BELOW  
WHEN H2 ARE NOT USED PROVIDE  
SIMPSON CS16 @ 48" O.C. STRAP OVER  
TOP PLATE AND MIN. 10" LAP ON STUDS U.N.O.

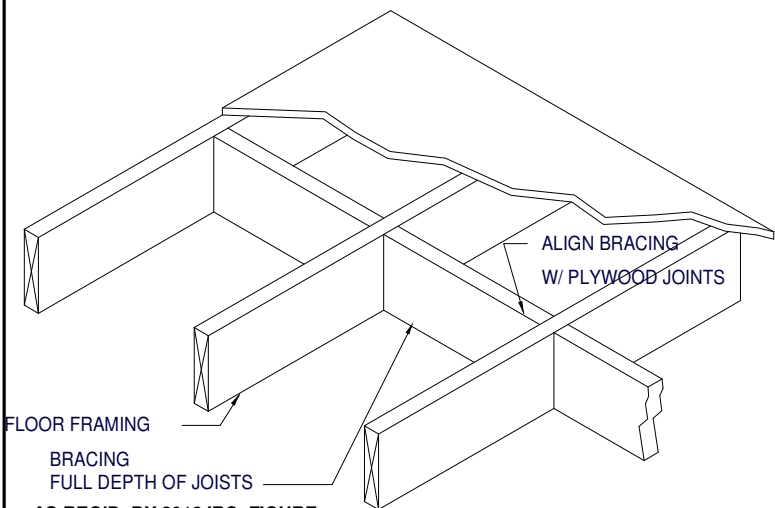


Simpson Strong-Tie  
H2

RAFTER ABOVE STUD  
WHEN H2 ARE USED EVERY OTHER JOIST  
SIMPSON CS16 STRAP OVER TOP PLATE  
& MIN. 10" LAP ON STUDS ARE NOT REQUIRED U.N.O.



20" SIMPSON CS 16 TIE STRAP CONNECTS STUDS TO  
FLOOR SYSTEM @ 48" O.C., 10d NAILS ALL HOLES  
AND WOOD COLUMNS TO PORCH HEADERS  
AND WOOD COLUMNS TO FLOOR RIM JOIST U.N.O.



FLOOR FRAMING

BRACING  
FULL DEPTH OF JOISTS

AS REQ'D. BY 2018 IRC, FIGURE  
R502.2 & SECTION R502.7

OPTIONAL RAFTER OR STUD/POST  
TO DBL PLATE/HEADER CONNECTION:  
6" FASTENMASTER TIMBERLOK  
INSTALLED AT 22.5 DEGREE  
MIN. 2.5" FROM CONNECTION  
WWW.FASTENMASTER.COM

USP #SPT4  
UPLIFT - 735#

USP #RT7  
UPLIFT - 585#

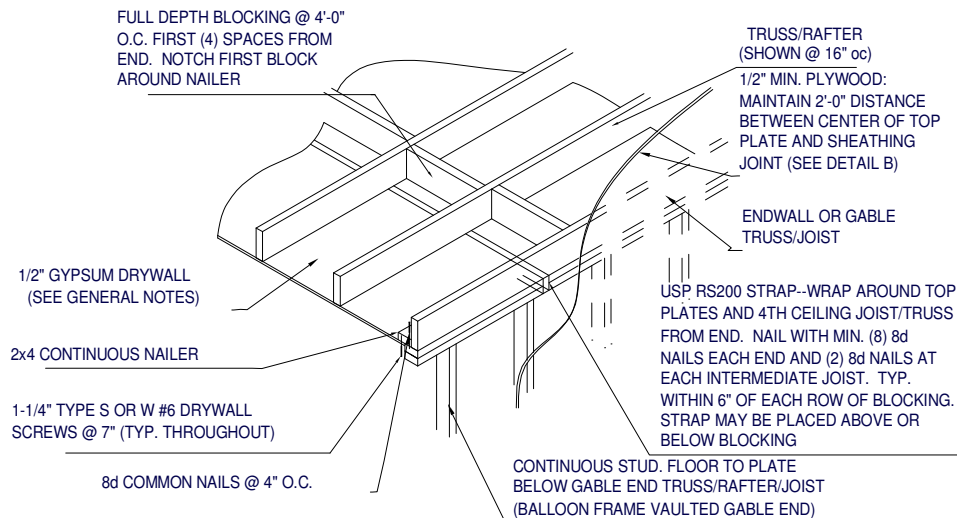
USP #FA3  
UPLIFT = 760#

USP #SPT22  
UPLIFT - 595#

USP #RT3  
UPLIFT - 475#

USP #RT20  
UPLIFT - 1105#

OPTIONAL SLAB/BOTTOM PLATE/WALL CONNECTIONS  
SIMPSON H2.5, H3, OR SSP OR DSP BOTTOM PLATE TO STUDS



## ENDWALL CEILING CONNECTION

James Zaleski P.E 51544 2305 Haverhill Rd Tallahassee, FL 32312 PH 850-766-7778

## RAFTER/TRUSS

USP RS200 ON EACH RAFTER PAIR, 12" MIN.  
END LENGTH ON EACH RAFTER, (11)  
8d FASTENERS REQ'D EACH END.

ALT: 1x6 COLLAR TIE EVERY OTHER RAFTER,  
MIN. (9) 8d NAILS EACH END.

NOTE: DETAIL ABOVE NOT REQUIRED  
FOR CONTINUOUS TRUSSES.

USP RT16 STRAP AT  
ALL BEARING POINTS

RT16 MUST BE INSTALLED ON OUTSIDE OF  
STUD WALL. IF INSTALLED ON INSIDE OF  
WALL, STUDS ON EITHER SIDE OF RT16  
MUST BE ANCHORED TO TOP PLATE USING  
RT7 STRAPS.

INTERIOR LOAD BEARING WALLS--  
STRAP TRUSS/RAFTERS TO TOP PLATES  
WITH USP RT16. ANCHOR TOP PLATES TO  
STUDS WITH USP SPT24 STRAPS ON SAME  
SIDE AS RT16 STRAPS. CONNECT 2ND  
FLOOR WALL STUDS TO 1ST FLOOR WALL  
STUDS OR BEAMS USING USP RS200  
STRAPS @ 48" O.C. (MIN. 11 8d NAILS EACH  
END). ATTACH 1ST FLOOR STUDS TO  
SUPPORTING GIRDERS IN SIMILAR MANNER.  
ANCHOR FLOOR JOISTS TO DROPPED  
GIRDERS WITH USP RT 17. SEE DETAIL I  
FOR DROPPED GIRDER ANCHORING.

OPTIONAL TIEDOWN IS THE QUICK TIE SYSTEM  
WWW.QUICKTIEPRODUCTS.COM  
CONTRACTOR SHALL SUBMIT TIEDOWN PLAN  
FOR ENGINEER'S APPROVAL

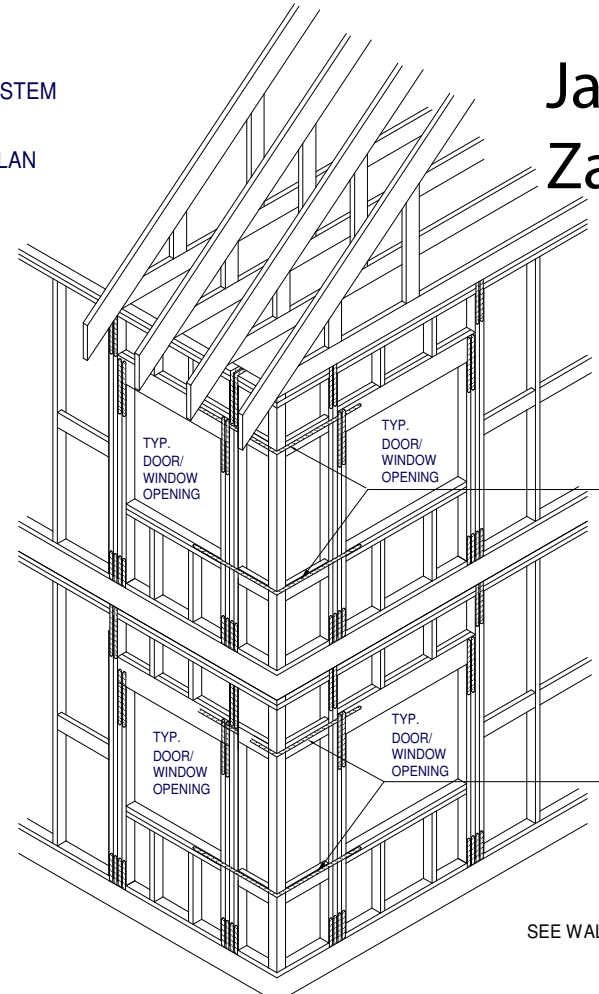
STRAP OVERBUILT VALLEY  
SET) TRUSSES/RAFTERS OVER  
MAIN TRUSSES/RAFTERS WITH  
USP MTW12 OR MTW18

USP STRAP RS200 -- WRAP  
OVER TOP OF EVERY PIGGY  
BACK RAFTER/TRUSS AND FASTEN  
WITH (4) 8d COMMON NAILS  
AT EACH MEMBER

OPTIONAL RAFTER TIEDOWN IS:  
6" FASTENMASTER TIMBERLOK  
2"-3" IN TOP AND 3"-4" IN BOTTOM

MIN. (4) 8d COMMON NAILS  
ON EACH SIDE OF 2 MEMBER  
CONNECTION

RAFTER TO HIP CONNECTION:  
SIMPSON LS50 OR  
(2) 1/4"x3.5" WOOD SCREWS PLACED  
AT 1/3 DEPTH POINTS AND PASS  
THROUGH THE INSIDE CORNER OF CONNECTION



SEE WALL SECTIONS FOR VERICAL TIEDOWN

## HORIZONTAL STRAPPING DETAIL @ CORNERS

OPT. PAPER SIZE: for 1/4" = 1'-0" on 24"x36" PAPER SIZE ENLARGE PRINTS TO 200%

## FINAL CONSTRUCTION PLANS



USP RS200 STRAP--OVERLAP  
TOP AND BOTTOM HEADER (USE  
BLOCKING BETWEEN STUDS WHERE  
HEADERS DON'T ALIGN) 12" MIN.  
EACH SIDE. TYP. WITH CORNER  
WALLS SHEATHED LESS THAT 3'-6"  
EITHER WAY AND ALL BAY WINDOWS.

Revision Number	Revision Description	Revision Date
1	FINAL	7/9/21

AREAS:	1,296 SF	510 SF	252 SF	240 SF	2,298 SF
FIRST FLOOR HEATED					
SECOND FLOOR HEATED					
FRONT PORCH					
REAR PORCH					
TOTAL UNDER ROOF					

THE: DOGWOOD 'A'	FOR: AUSTIN ODUM	437 S. E. PEACOCK TER. LAKE CITY, FL 32025
JOB# 59-21-017	2x4 EXTERIOR WALLS	FOUNDATION TYPE: MONOSLAB
DRAWN BY: J. GENCHUR	CHECKED BY: B. TOOMBS	PRINT DATE: 7/12/2021 11:03:09 AM
PROPERTY OF: AMERICA'S HOME PLACE	SHEET NUMBER: S-6	FL- HOLD DOWN DETAILS