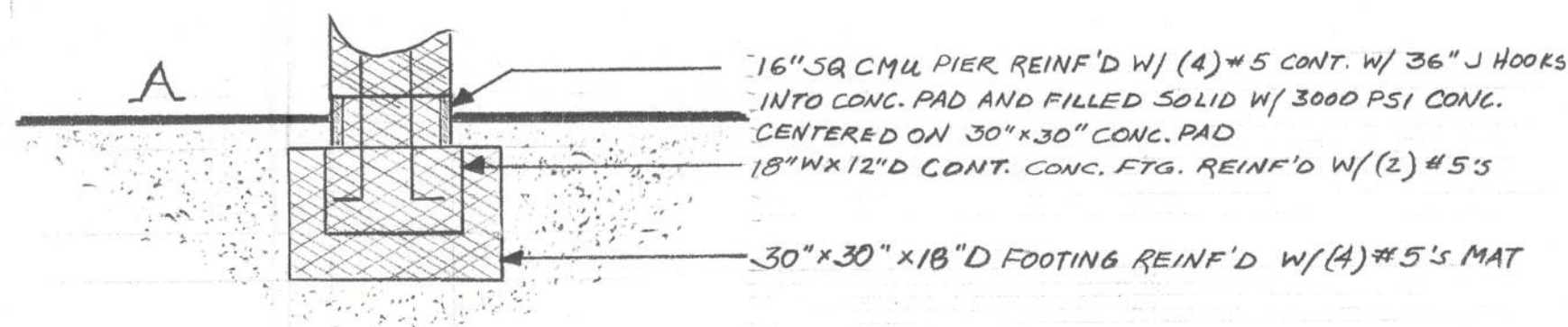


Notes: 16" SQ. CMU PIER
REINF'D W/ (4) #5's
CONT. W/ 36" J HOOK
INTO CONC. PAD AND
FILLED SOLID W/ 3000
PSI CONC. CENTERED
ON 30"x30"x18"D PAD
REINF'D W/ (4) #5's MAT

Notes: 18"Wx12"D CONT. CONC. FTG. REINF'D
W/ (2) #5's. WIDEN FTG AND PROVIDE
REINF'D AS SPECIFIED @ EACH CMU
PIER. WIDEN FOOTINGS TO 30"x30"x18"D
AS SHOWN IN PLANS. FOOTINGS @ PIERS
REINF'D W/ (4) #5's TYPICAL

END CONT RIBAR AT LEAST 3" FROM EDGE OF
CONT. FTG. ON ALL SIDES



CMU PIER LAYOUT/FOUNDATION PLAN

SCALE: 1:20 APPROVED BY: DRAWN BY: das
DATE: REVISED

DRAWING NUMBER
1

David Stell
5 Sept 2012