

DRAWING INDEX - VOLUME 1

DRAWING INDEX - VOLUME 2

SHEET INDEX		
SHEET NO.	SHEET NAME	Volume Number
GENERAL		
G-000-1	COVER - VOLUME 1	1
G-001A	ARCHITECTURAL ABBREV. SYMBOLS LEGENDS & MAPS	1
G-001B.1	ARCHITECTURAL INDEX VOLUME 1	1
G-002	CODE SUMMARY	1
G-003	PENETRATION DETAILS	1
G-101	SITE LIFE SAFETY CODE PLAN	1
G-111	FIRST FLOOR CODE PLAN	1
G-121	UPPER TIER CODE PLAN	1
G-140	ACCESSIBILITY COMPLIANCE - PLAN	1
G-400	TYPICAL FIXTURE MOUNTING HEIGHTS	1
G-401	TYPICAL ACCESSIBILITY & SIGNAGE DETAILS	1

CIVIL		
C01	CIVIL COVER SHEET	1
C02	GENERAL NOTES	1
C03	GENERAL NOTES	1
C04	EXISTING CONDITIONS PLAN	1
C05	SOIL & ZONING MAP	1
C06	NOT USED	1
C07	EROSION CONTROL & DEMOLITION PLAN	1
C08	OVERALL SITE PLAN	1
C09	GEOMETRY PLANS	1
C10	GRADING PLAN & DRAINAGE STRUCTURES	1
C11	POND 10 PLAN & DETAILS	1
C12	UTILITY PLAN	1
C13	UTILITY PROFILES	1
C14	FENCE DETAILS	1
C14B	GATE DETAILS	1
C15	LAKE CITY UTILITY DETAILS	1
C16	LAKE CITY UTILITY DETAILS	1
C17	LAKE CITY UTILITY DETAILS	1
C18	TYPICAL SECTIONS & GENERAL DETAILS	1

STRUCTURAL		
S-001	STRUCTURAL NOTES	1
S-111	FOUNDATION PLAN	1
S-121	UPPER TIER FRAMING PLAN	1
S-122	UPPER TIER CEILING FRAMING PLAN	1
S-131	ROOF FRAMING PLAN	1
S-211	BUILDING SECTIONS	1
S-221	METAL BUILDING DETAILS	1
S-311	FOUNDATION DETAILS	1
S-312	FOUNDATION DETAILS	1
S-321	UPPER TIER FLOOR AND CEILING DETAILS	1
S-331	STRUCTURAL STEEL DETAILS	1
S-351	STAIR DETAILS	1
S-352	STAIR DETAILS	1
S-411	TYPICAL MASONRY DETAILS	1
S-511	PRECAST CELL LOADING PLANS	1
S-701	PROJECT ALTERNATES	1

ARCHITECTURAL SITE		
AS-101	ARCHITECTURAL SITE PLAN & DETAILS	1

ARCHITECTURAL		
A-111	FIRST FLOOR ANNOTATION PLAN	1
A-112	FIRST FLOOR DIMENSION PLAN	1
A-113	FIRST FLOOR WALL TYPE PLAN	1
A-114	FIRST FLOOR RCP	1
A-115	FIRST FLOOR FINISH PLAN	1
A-121	UPPER TIER ANNOTATION PLAN	1
A-122	UPPER TIER DIMENSION PLAN	1
A-123	UPPER TIER WALL PLAN	1
A-123S	UPPER TIER WALLS TO DECK PLAN	1
A-124	UPPER TIER RCP	1
A-125	UPPER TIER FINISH PLAN	1
A-131	ROOF PLAN	1
A-201	EXTERIOR ELEVATIONS	1
A-301	BUILDING SECTIONS & ELEVATIONS	1
A-311	WALL SECTIONS	1
A-312	WALL SECTIONS & DETAILS	1
A-401	LARGE SCALE FLOOR PLANS	1
A-402	LARGE SCALE FLOOR PLANS & ELEVATIONS	1
A-451	ENLARGED PLANS AND SECTIONS	1

SHEET INDEX		
SHEET NO.	SHEET NAME	Volume Number
A-452	ENLARGED PLANS AND SECTIONS	1
A-453	ENLARGED SECTIONS AND DETAILS	1
A-501	VAPOR BARRIER AND EXPANSION DETAILS	1
A-502	EXTERIOR DETAILS	1
A-531	ROOF DETAILS	1
A-551	INTERIOR - WALL TYPES & ASSEMBLY DETAILS	1
A-561	INTERIOR - WALL DETAILS	1
A-581	INTERIOR - DETAILS	1
A-582	INTERIOR - DETAILS	1
A-591	INTERIOR - CASEWORK	1
A-601	ARCHITECTURAL DOOR SCHEDULE	1
A-701	PROJECT ALTERNATES	1

DETENTION		
QD-001	DETENTION SYMBOLS, NOTES AND LEGENDS	1
QD-111	DETENTION FIRST FLOOR PLAN	1
QD-112	SECURITY LEVEL FIRST FLOOR PLAN	1
QD-121	DETENTION UPPER TIER PLAN	1
QD-122	SECURITY LEVEL UPPER TIER PLAN	1
QD-401	LARGE SCALE PRECAST CELL PLANS AND ELEVATIONS	1
QD-402	LARGE SCALE PRECAST CELL PLANS AND ELEVATIONS	1
QD-403	LARGE SCALE PRECAST CELL PLANS	1
QD-404	PRECAST CELL DETAILS	1
QD-405	PRECAST CELL DETAILS	1
QD-406	DETENTION LARGE SCALE PLANS	1
QD-407	DETENTION SECURED VESTIBULE - ADD ALTERNATE #2	1
QD-501	DETENTION EQUIPMENT AND FURNISHINGS	1
QD-600	DETENTION DOOR SCHEDULE BP1 (REFERENCE ONLY)	1
QD-601	DETENTION DOOR SCHEDULE	1
QD-606	DETENTION DOOR & FRAME PROFILES	1
QD-607	DETENTION DOOR DETAILS	1
QD-608	DETENTION DOOR DETAILS	1
QD-610	DETENTION GLAZED FRAME SCHEDULE AND ELEVATIONS	1

 **Dewberry®**
800 North Magnolia Ave.
Suite 1000, Orlando, FL 32803-3251
t +1 407.843.5120
f +1 407.649.8664

Ajax
10365 Hood Road South Suite 203 t +1 904-262-8660
Jacksonville, Fl. 32257 f +1 904-262-8623

STATE OF FLORIDA
DEPARTMENT OF BUSINESS AND PROFESSIONAL REGULATION
BOARD OF ARCHITECTURE & INTERIOR DESIGN
THE ARCHITECT CORPORATION HEREIN IS CERTIFIED UNDER THE
PROVISIONS OF CHAPTER 481, FLORIDA STATUTES

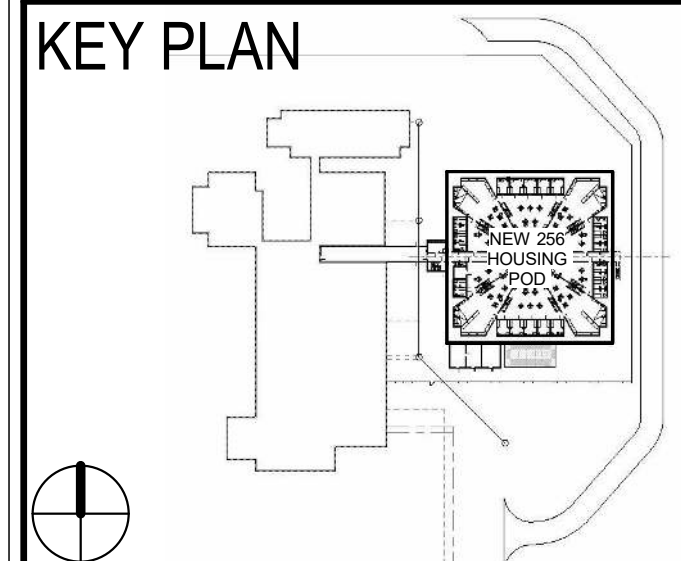
Dewberry Architects Inc
8401 ARLINGTON BLVD
C/O CORPORATE LEGAL GROUP
FAIRFAX VA 22031

LICENSE NUMBER: AA26001171
EXPIRATION DATE: FEBRUARY 28, 2021

Professional Seals



KEY PLAN



COLUMBIA COUNTY DETENTION FACILITY
389 NW Quinten St, Lake City, FL 32055

COLUMBIA COUNTY BOARD OF COUNTY COMMISSIONERS

SCALE

No.	Description	Date

REVISIONS

DRAWN BY	R NOVITSKY
APPROVED BY	R NOVITSKY
CHECKED BY	B HALL
DATE	JULY 24, 2020

TITLE	
1	1
2	2
3	3
4	4
5	5
6	6
7	7
8	8
9	9
10	10
11	11
12	12
13	13
14	14
15	15
16	16
17	17
18	18
19	19
20	20
21	21
22	22
23	23
24	24
25	25
26	26
27	27
28	28
29	29
30	30
31	31
32	32
33	33
34	34
35	35
36	36
37	37
38	38
39	39
40	40
41	41
42	42
43	43
44	44
45	45
46	46
47	47
48	48
49	49
50	50
51	51
52	52
53	53
54	54
55	55
56	56
57	57
58	58
59	59
60	60
61	61
62	62
63	63
64	64
65	65
66	66
67	67
68	68
69	69
70	70
71	71
72	72
73	73
74	74
75	75
76	76
77	77
78	78
79	79
80	80
81	81
82	82
83	83
84	84
85	85
86	86
87	87
88	88
89	89
90	90
91	91
92	92
93	93
94	94
95	95
96	96
97	97
98	98
99	99
100	100

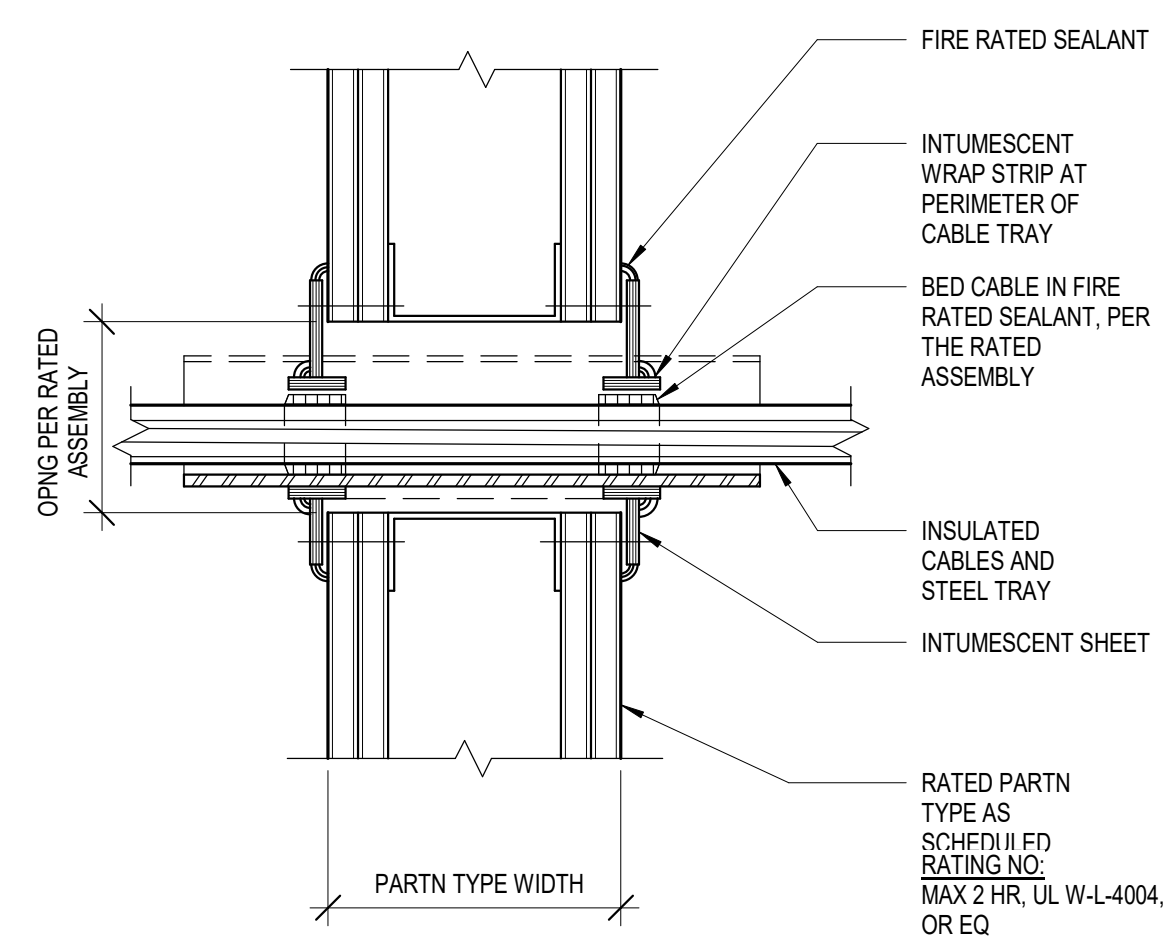
ARCHITECTURAL
INDEX VOLUME 1

PROJECT NO.	50101397
-------------	----------

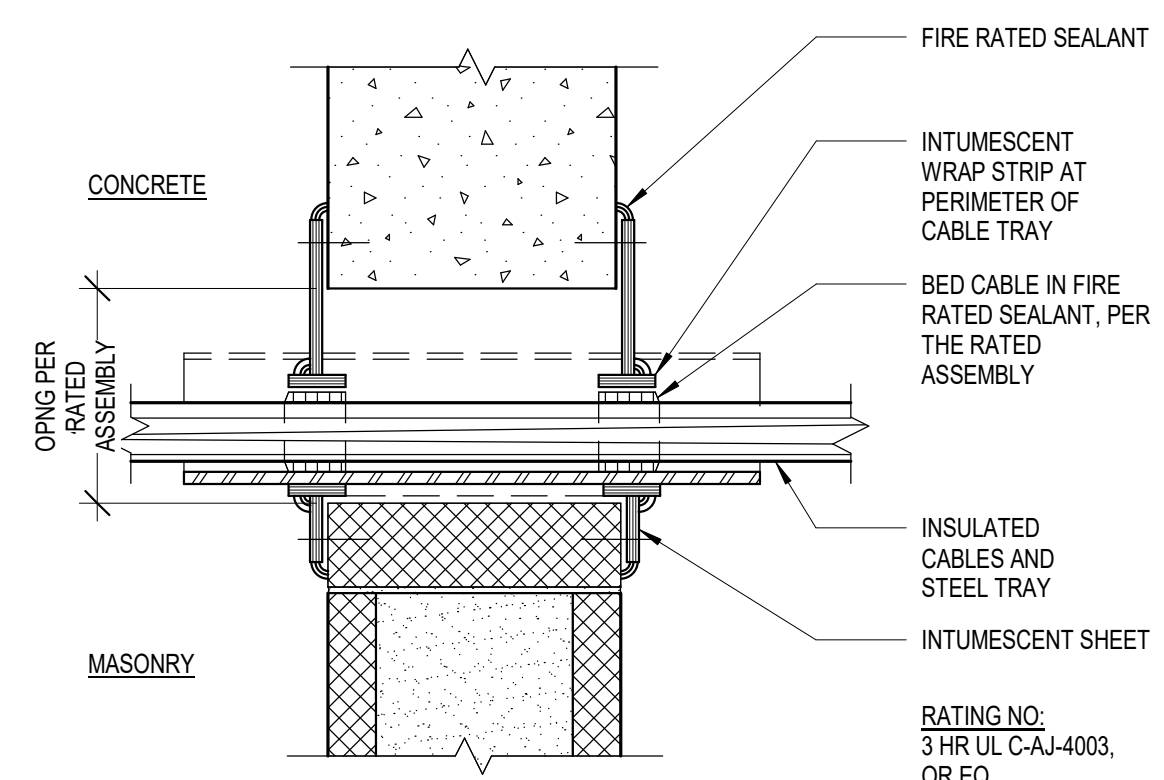
G-001B.1

SHEET NO. _____

DESTROY AFTER USE

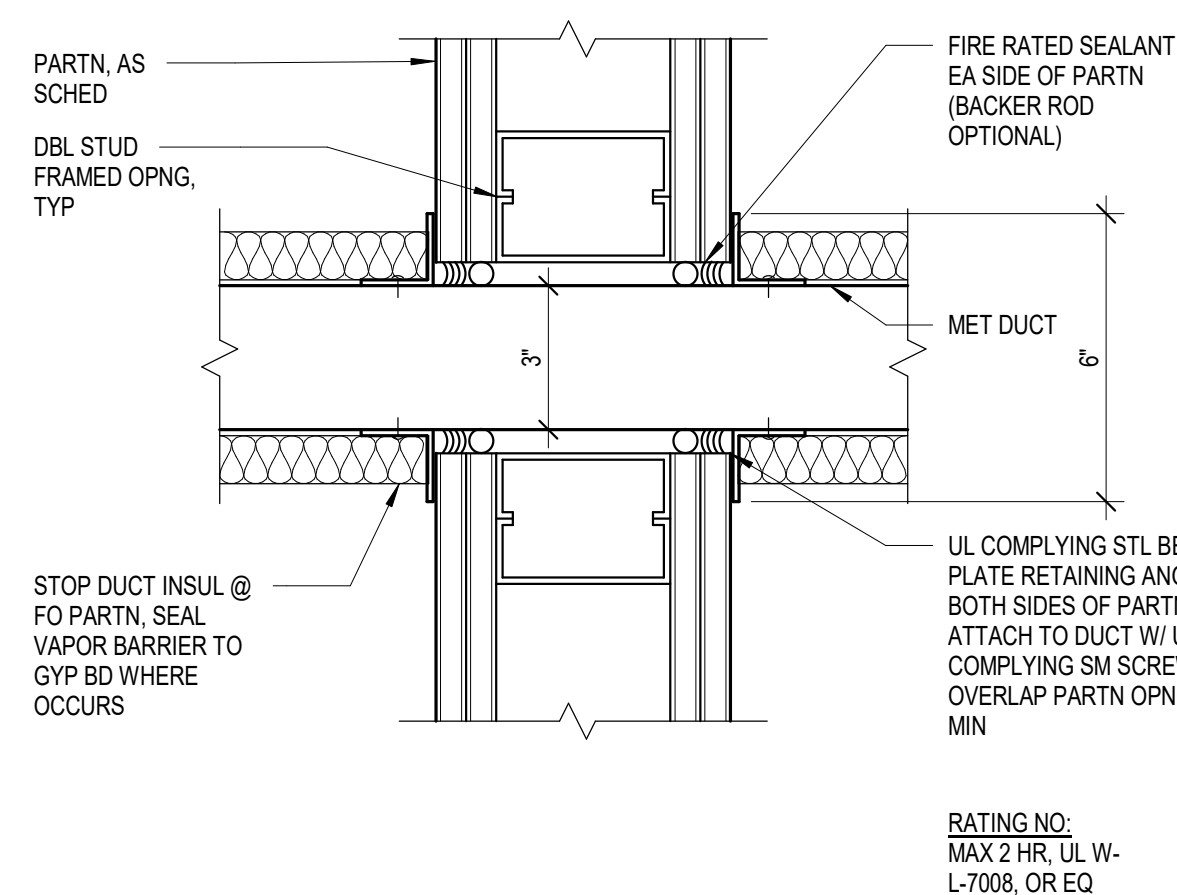


TYP CABLE TRAY
THRU RATED GYP BD PARTN
Scale: 3" = 1'-0"



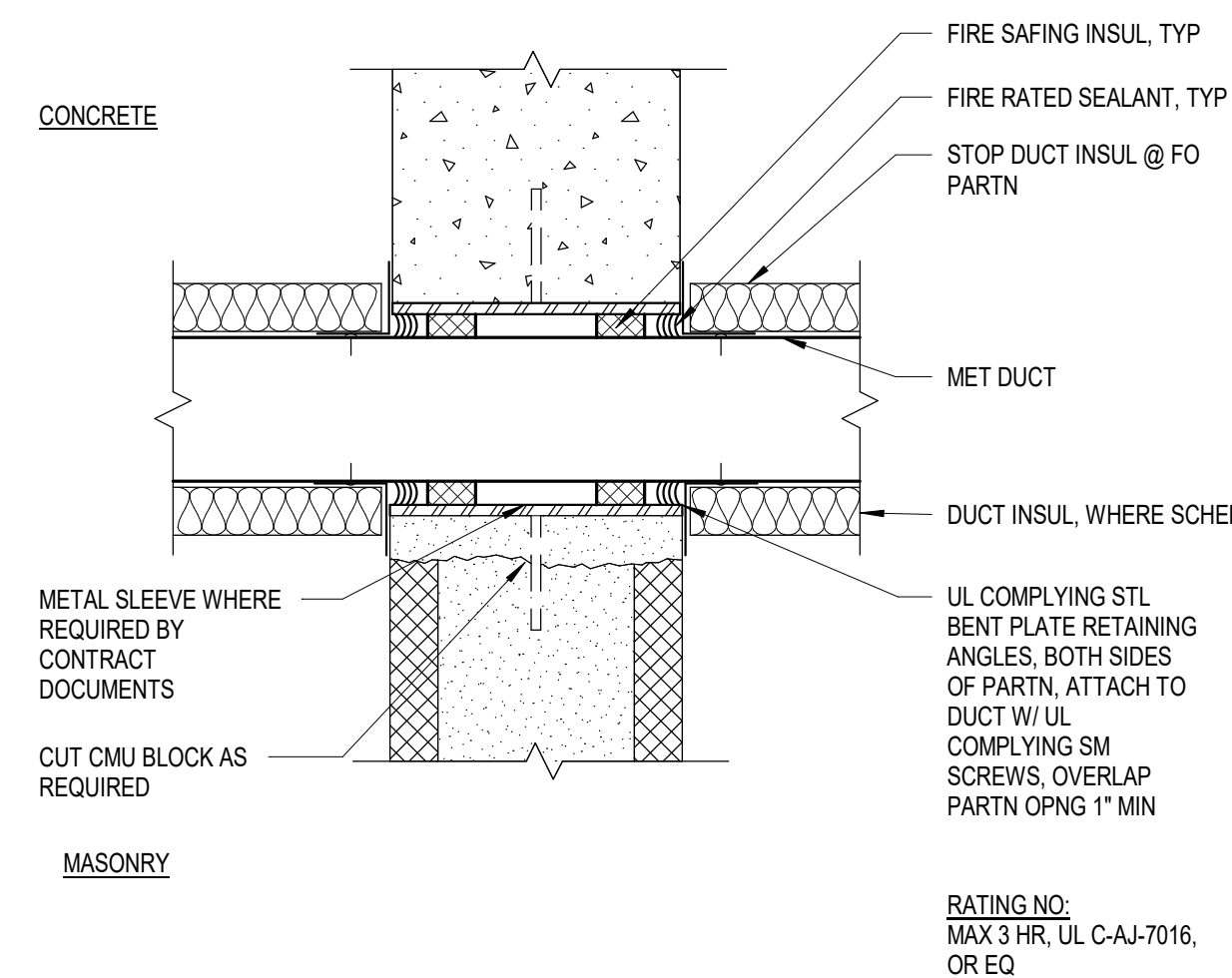
**TYP CABLE TRAY
THRU CONC/CMU RATED WALL**

D6 Scale: 3" = 1'-0"



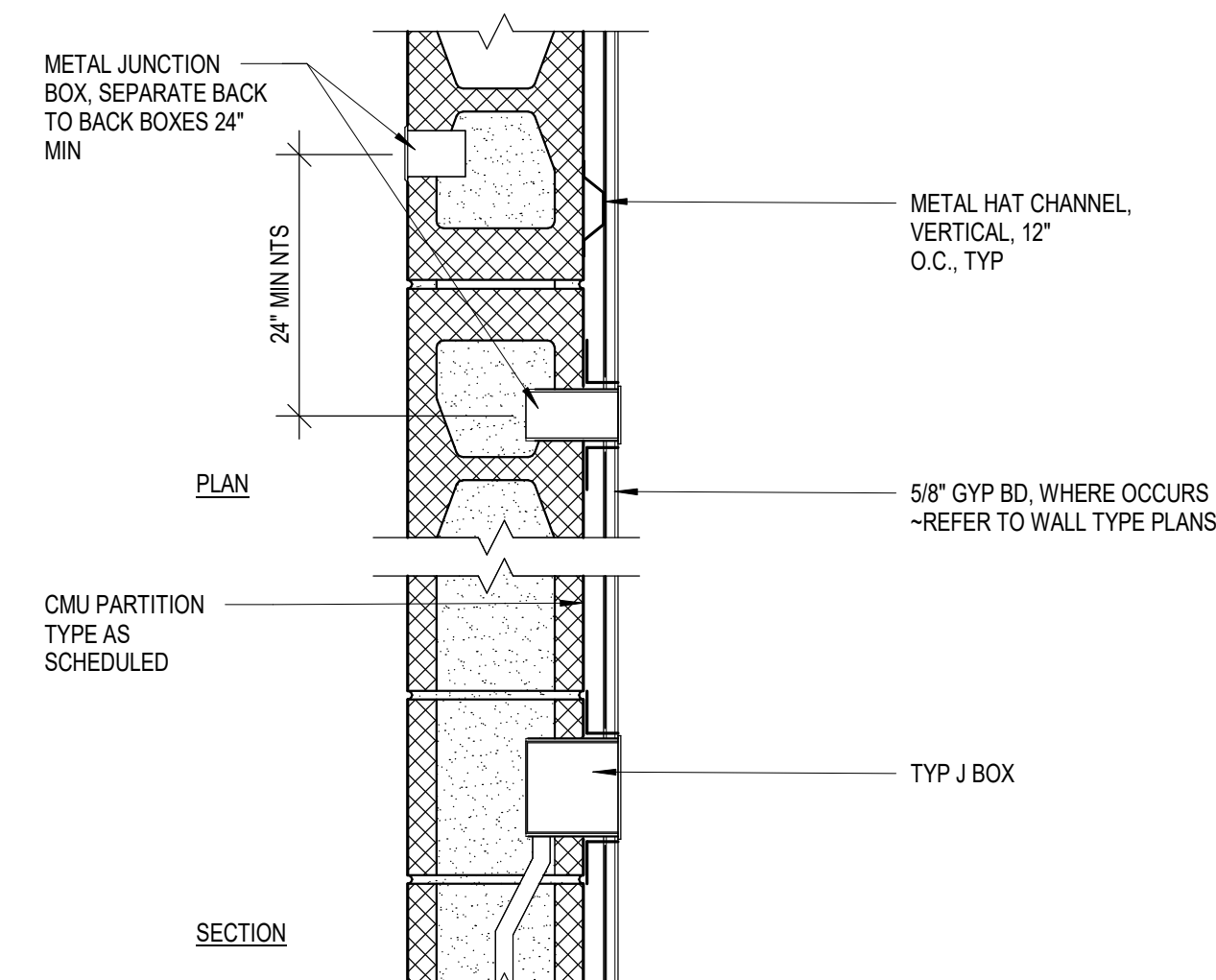
**TYP MET DUCT
THRU RATED GYP BD PARTN**

(B6) Scale: 3" = 1'-0"



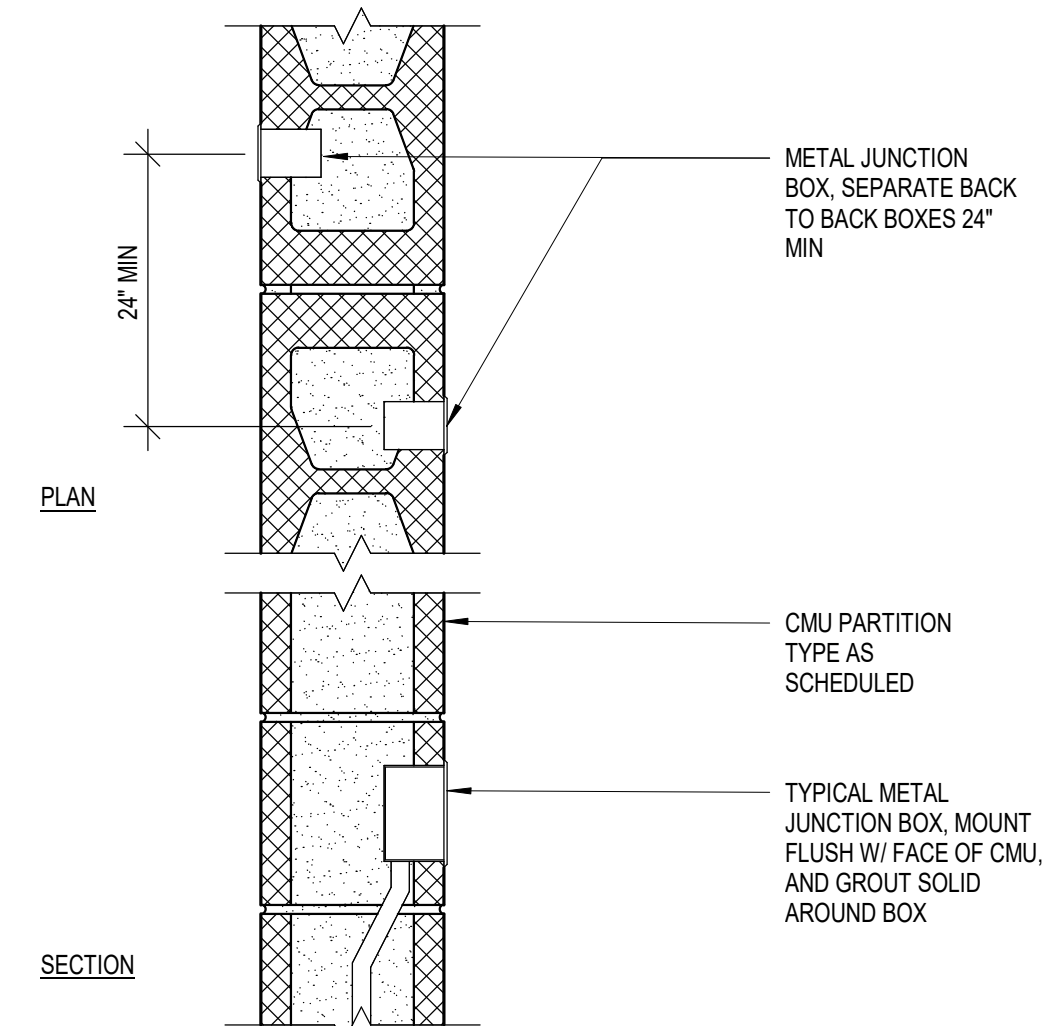
**TYP MET DUCT
THRU RATED CONC/CMU WALL**

A6 Scale: 3" = 1'-0"

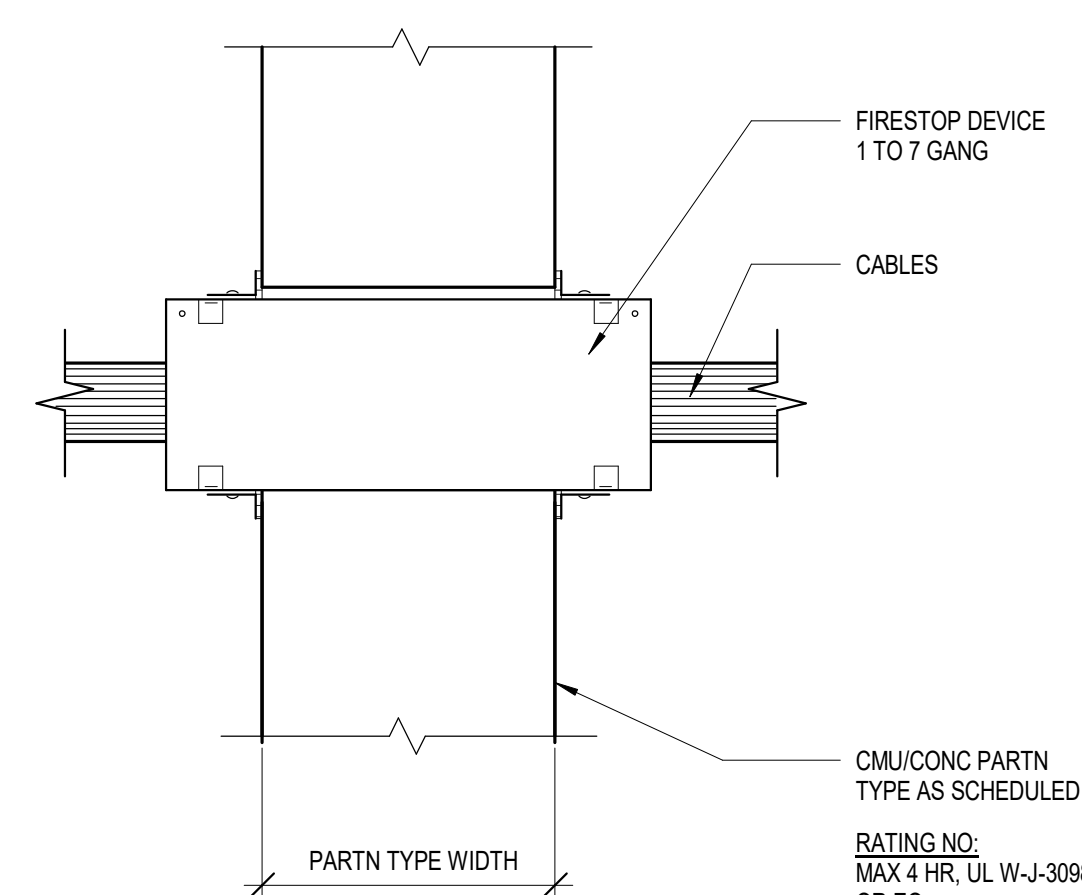


**TYP "J" BOX @
CMU PARTN**

E5 Scale: 1 1/2" = 1'-0"

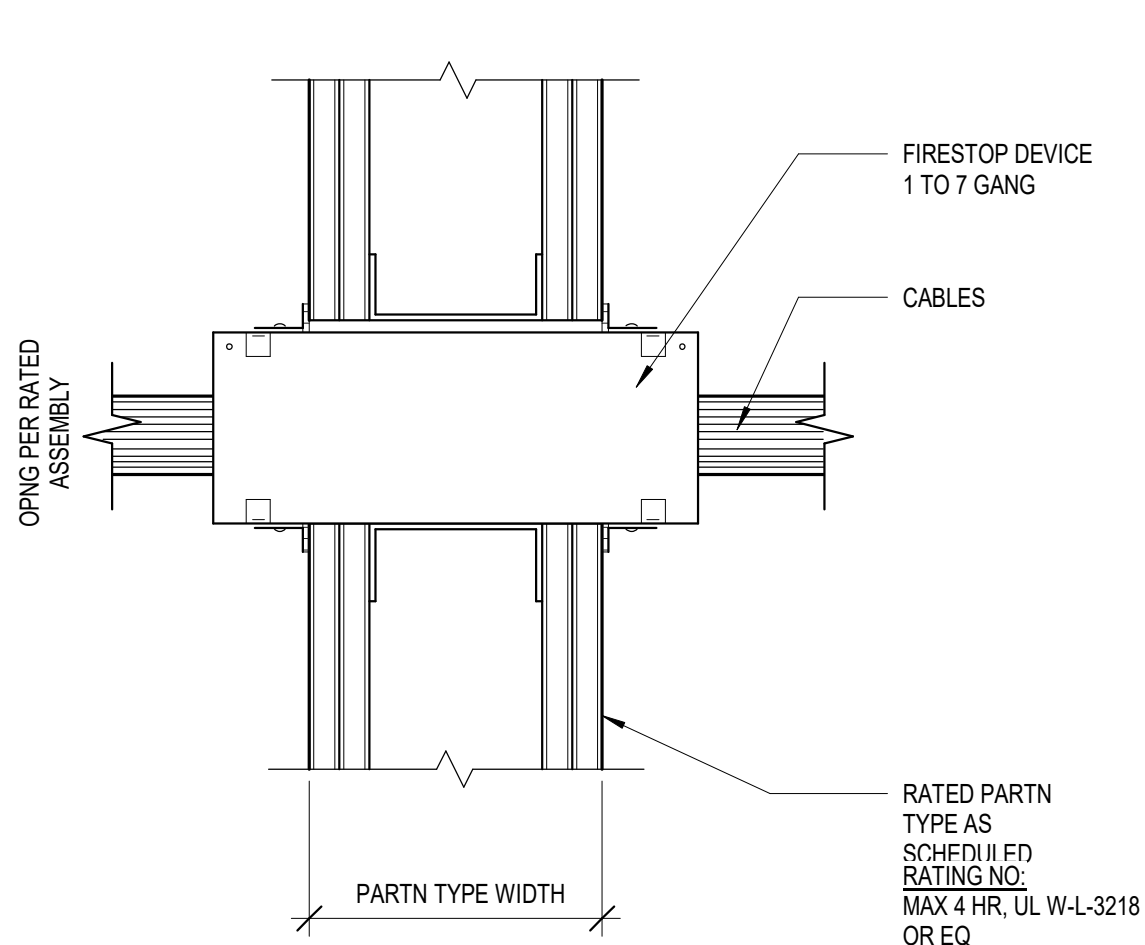


D5 TYP J BOX @ CMU PARTN
Scale: 1 1/2" = 1'-0"



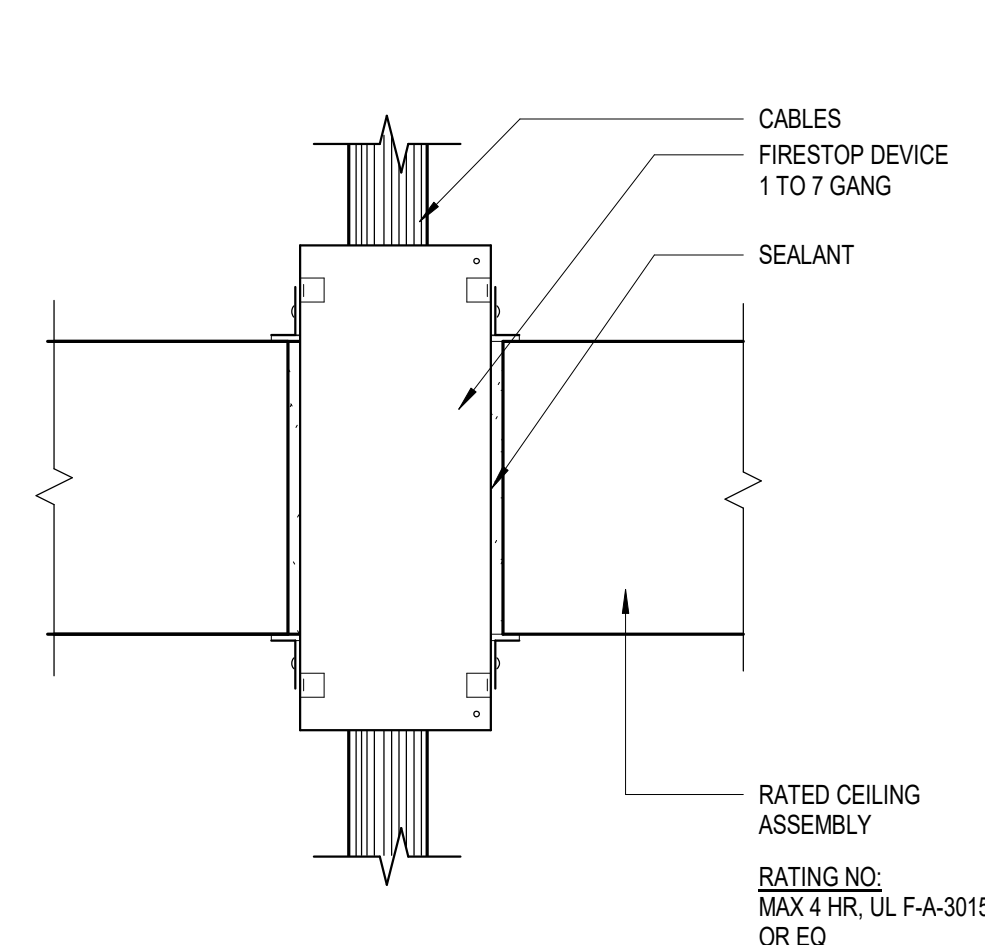
**TYP CABLE FIRESTOP DEVICE
THRU CONC/CMU**

B4 Scale: 3" = 1'-0"



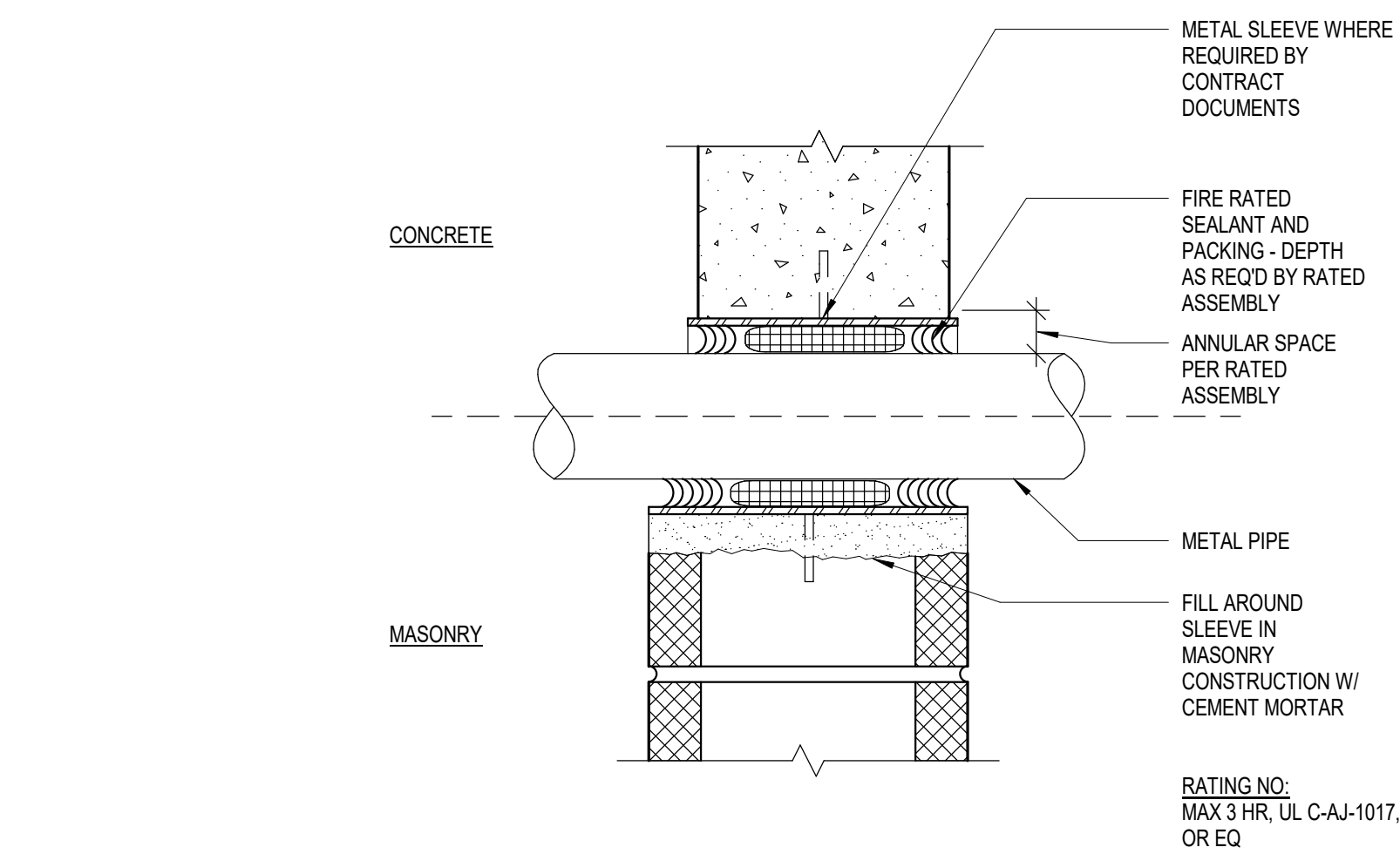
**TYP CABLE FIRESTOP DEVICE
THRU GYP BD**

A5 Scale: 3" = 1'-0"

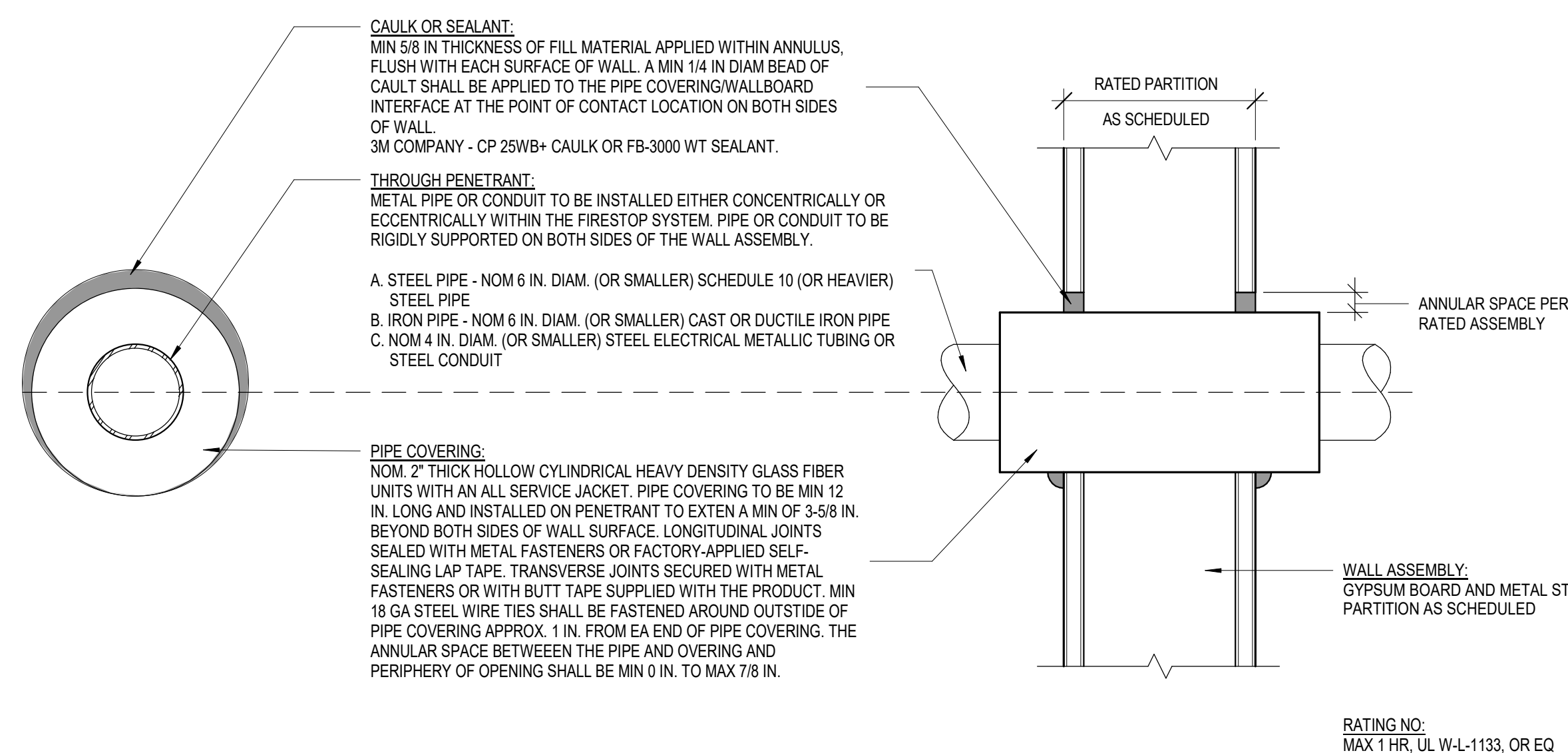


**TYP CABLE FIRESTOP DEVICE
THRU CEILING ASSEMBLY**

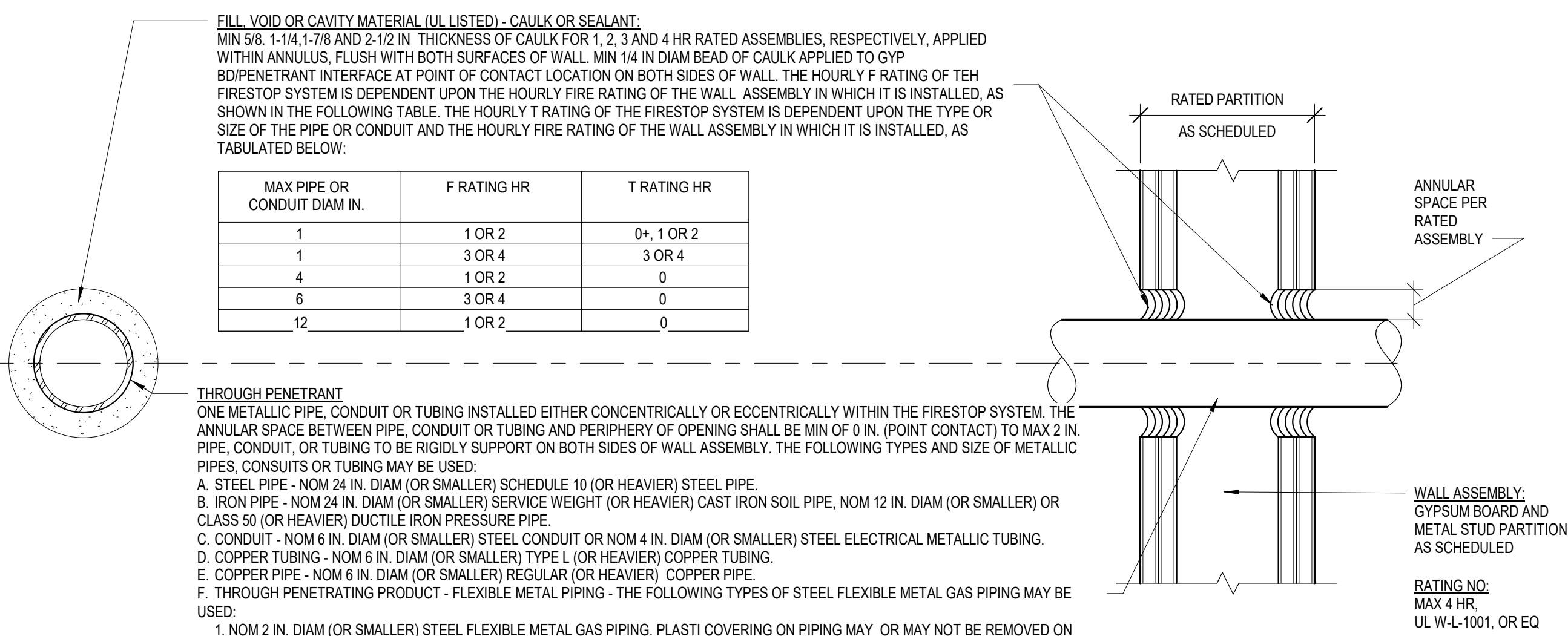
A4 Scale: 3" = 1'-0"



D3 **TYP PIPE/CONDUIT THRU
CONC/CMU RATED WALL**
Scale: 3" = 1'-0"



(B3) TYP PIPE CONDUIT THRU RATED GYP BRD PARTITION
Scale: 3" = 1'-0"



WARD MFG INC
A3 TYP PIPE CONDUIT THRU RATED GYP BRD PARTITION
Scale: 3" = 1'-0"

No.	Description	Date

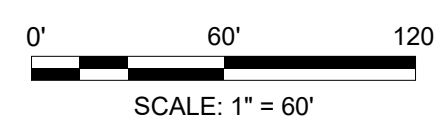
DRAWN BY	R NOVITSKY
APPROVED BY	R NOVITSKY
CHECKED BY	B HALL
DATE	JULY 24, 2020

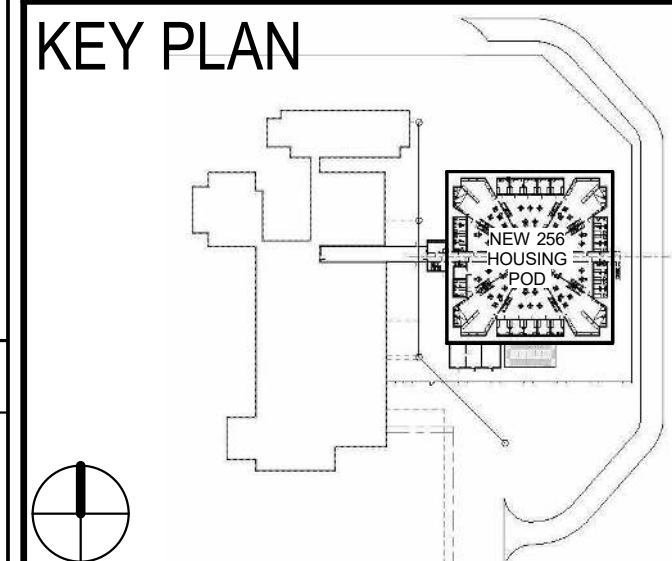
SITE LIFE SAFETY CODE PLAN

G-101

SHEET NO. _____

DESTROY AFTER USE





COLUMBIA COUNTY DETENTION FACILITY
389 NW Quinten St, Lake City, FL 32055

COLUMBIA COUNTY BOARD OF COUNTY
COMMISSIONERS

SCALE	As indicated
-------	--------------

[illegible]

DRAWN BY	R NOVITSKY
APPROVED BY	R NOVITSKY
CHECKED BY	B HALL
DATE	JULY 24, 2020

TITLE

FIRST FLOOR
CODE PLAN

PROJECT NO.	50101397
-------------	----------

G-111

SHEET NO.

DESTROY AFTER USE

The diagram shows a building floor plan with several rooms and corridors. A path is highlighted with a dashed line and labeled 'PATH'. A circle with the number '999' is connected by an arrow to the text 'OCCUPANT LOAD'. Another circle with the number '100' is connected by an arrow to the text 'NUMBER OF OCCUPANTS GOING THRU AN EGRESS DOOR OR THRU AN EGRESS STAIR'. A third circle with the number '999' is connected by an arrow to the text 'MAX. NUMBER OF OCCUPANTS ALLOWED PER CODE THRU AN EGRESS DOOR / EGRESS STAIR'. A dashed line with an arrow pointing to it is labeled 'TRAVEL DISTANCE TO NODE OR EXIT (REFER TO EGRESS PATH SCHEDULE)'. A circle is connected by an arrow to the text 'POINT INDICATES TWO PATHS OF EGRESS'.

999 — OCCUPANT LOAD

100
999

NUMBER OF OCCUPANTS GOING THRU AN EGRESS DOOR OR THRU AN EGRESS STAIR

MAX. NUMBER OF OCCUPANTS ALLOWED PER CODE THRU AN EGRESS DOOR / EGRESS STAIR

PATH

TRAVEL DISTANCE TO NODE OR EXIT (REFER TO EGRESS PATH SCHEDULE)

POINT INDICATES TWO PATHS OF EGRESS

(FE)	FIRE EXTINGUISHER WALL MOUNT
(FEC-1)	FIRE EXTINGUISHER CABINET FULLY RECESSED
(FEC-2)	FIRE EXTINGUISHER CABINET SEMI RECESSED
(FEC-3)	FIRE EXTINGUISHER CABINET SURFACE MOUNTED

—SP—	SMOKE PARTITION - NON FIRE RATED (FBC SECTION 710)
—1P—	1 HOUR FIRE RESISTANCE RATED PARTITION (FBC SECTION 708) 20 MIN. OPENING PROTECTION
—1B—	1 HOUR FIRE RESISTANCE RATED FIRE BARRIER (FBC SECTION 707) 45 MIN OPENING PROTECTION 1296 SI MAX
—1SB—	1 HOUR FIRE RESISTANCE RATED SMOKE BARRIER (FBC SECTION 709) 45 MIN OPENING PROTECTION 1296 SI MAX & SMOKE SEALS
—2B—	2 HOUR FIRE RESISTANCE RATED FIRE BARRIER (FBC SECTION 707) 90 MIN OPENING PROTECTION 100 SI MAX.
—2H—	2 HOUR FIRE RESISTANCE RATED HORIZONTAL EXIST (FBC SECTION 1024) 90 MIN OPENING PROTECTION 100 SI MAX.
—3B—	3 HOUR FIRE RESISTANCE RATED FIRE BARRIER (FBC SECTION 707) REFER TO TABLE 716.5 FOR OPENING PROTECTION
—2FW—	2 HOUR FIRE RESISTANCE RATED FIRE WALL (FBC SECTION 706) REFER TO TABLE 716.5 FOR OPENING PROTECTION
—3FW—	3 HOUR FIRE RESISTANCE RATED FIRE WALL (FBC SECTION 706) REFER TO TABLE 716.5 FOR OPENING PROTECTION
	RATED CORRIDOR

CODE COMPLIANCE GENERAL NOTES

1. PROJECT SHALL REMAIN IN COMPLIANCE WITH ALL ASPECTS OF ALL GOVERNING CODES AND ORDINANCES DURING THE COURSE OF CONSTRUCTION.
2. CONTRACTOR SHALL BE RESPONSIBLE FOR SUBMITTING ALL REQUIRED SHOP DRAWINGS AND CUTSHEETS FOR LIFE SAFETY SYSTEM COMPONENTS AND FIRE DEVICES TO THE LOCAL AUTHORITY HAVING JURISDICTION.
3. CONTRACTOR SHALL ORGANIZE A MEETING WITH THE LOCAL AUTHORITY HAVING JURISDICTION TO REVIEW THE LOCATIONS OF ALL LIFE SAFETY DEVICES AND EQUIPMENT PRIOR TO INSTALLATION.

1. TESTED ASSEMBLIES INDICATED AND SHALL MEET THE REQUIREMENTS OF ALL APPLICABLE CODES
2. PENETRATIONS THROUGH THE FLOOR DECK, ROOF DECK AND ALL FIRE RATED WALL ASSEMBLIES SHALL BE FIRE SEALED IN ACCORDANCE WITH THE SUPPLIED UL RATED PENETRATION DETAILS & MANUFACTURER'S DETAILS. INSTALLATION SHALL BE APPROPRIATE FOR LOCATION, TYPE OF CONSTRUCTION AND PENETRATING ITEM. PENETRATIONS ARE TO MEET OR EXCEED THE REQUIRED RATING.
3. ANY WALL SECTION WHERE THE WALL DOES NOT EXTEND TO AN INTERSECTING WALL OR STRUCTURE SHALL BE FIRE SEALED TO THE EXISTING WALL OR FIRE RESISTANCE RATED CONSTRUCTION GENERAL NOTE 1, TO COMPLETE THE BARRIER.
4. ALL NEW PENETRATIONS IN EXISTING RATED CONSTRUCTION SHALL BE SEALED TO THE EXISTING FIRE RESISTANCE RATED CONSTRUCTION GENERAL NOTE 2
5. ALL DUCTWORK, DIFFUSERS, AND GRILLES PENETRATING SMOKE OR FIRE RATED ASSEMBLIES SHALL BE INSTALLED WITH AN APPROPRIATE DAMPER. DAMPER SHALL BE APPROPRIATE FOR LOCATION, TYPE OF CONSTRUCTION. DAMPERS ARE TO MEET OR EXCEED THE REQUIRED RATING.
6. ALL FIXTURES, EQUIPMENT AND DEVICES PENETRATING FIRE RATED ASSEMBLIES SHALL BE LISTED FOR INSTALLATION IN THE ASSEMBLY
7. NO FIXTURES, EQUIPMENT AND DEVICES SHALL BE INSTALLED IF ITS INSTALLATION WILL COMPROMISE A REQUIRED FIRE RATED ASSEMBLY.
8. FOR DESIGNS USING A RETURN PLENUM SYSTEM, ALL FIXTURES, EQUIPMENT, AND DEVICES INSTALLED IN THE RETURN PLENUM SHALL BE PLENUM RATED OR INSTALLED PER PLENUM RATED REQUIREMENTS FOR CONSTRUCTION.

1. SPECIAL TESTING SHALL BE PROVIDED IN ACCORDANCE WITH FBC CHAPTER 17.
REFER TO STRUCTURAL PLANS & SPECIFICATIONS FOR TESTING REQUIREMENTS.

PROVIDED. ALL OTHER SIGNAGE SHALL BE BID SEPARATELY AND PERFORMED UNDER A SEPARATE SCOPE OF WORK.

NOTE: LIFE SAFTY PLANS INDICATING INMATE COUNTS, SUCH AS (3) INMATES REFLECT THE NUMBER OF INMATES WITH ANY GIVEN AREA AND DO NOT REFLECT THE OVERALL OCCUPANT LOAD. THE TOTAL NUMBER OF INMATES ARE CALCULATED BASED ON BED COUNTS WITHIN THE HOUSING PODS AND BOOKING HOLDING CELLS

BUILDING DATA
2 STORY WITH UPPER HOUSING TIER AND CORRIDOR

OCCUPANCY
INSTITUTIONAL OCCUPANCY I-3, USE CONDITION 4

TOTAL OCCUPANT LOAD

UPPER TIER LEVEL 132 INMATES + 2 STAFF

TOTAL OCCUPANT LOAD 268

FOR ALL FIRE WALLS, FIRE BARRIERS, FIRE PARTITIONS,
SMOKE BARRIERS AND SMOKE PARTITIONS;
PROVIDE MARKINGS AND IDENTIFICATION ON WALLS
PER SECTION 703.7 OF THE FLORIDA BUILDING CODE
LOCATE MARKINGS ABOVE CEILINGS WHERE APPLICABLE.
SEE G SERIES OF DRAWINGS FOR THE BUILDING CODE
PLANS AND WALL LOCATIONS.

HOUSING UNIT IS NOT REQUIRED TO BE SEPARATED INTO TWO SMOKE COMPARTMENTS
CORRIDOR REQUIRES A 1 HR FIRE PARTITION WITH 20 MIN. OPENING PROTECTION.

PER FBC 408.8.1 CONDITION 4
SLEEPING AREAS SHALL BE
SEPARATED BY SMOKE TIGHT
PARTITION WHERE TRAVEL
DISTANCE THROUGH COMMON
SPACE IS GREATER THAN 50F

REFUGE AREA = 15 SF PER PERSON
 $256 \times 15 = 3,840 \text{ SF} < 4,000 \text{ SF (COMPLIES)}$
 ~REFER TO
 ARCHITECTURAL SITE PLAN AS-101
 & SITE LIFE SAFETY CODE PLAN G-101
 FOR REFUGE AREA LOCATION

↑ 1 STAFF

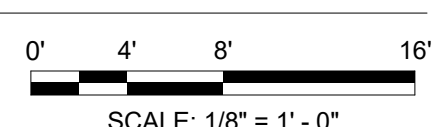
EXISTING I-3 USE

EXISTING I-3 USE

CONNECTOR LIFE SAFETY CODE PLAN

Scale: 1/8" = 1'-0" A6/A-201

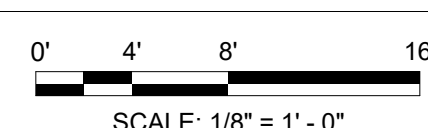
A6/A-201



FIRST FLOOR LIFE SAFETY CODE PLAN

Scale: 1/8" = 1'-0"

A6/A-201



A detailed site plan of the New 26th Housing project. The plan shows a large rectangular building complex with internal courtyards and parking spaces. The building is labeled 'NEW 26TH HOUSING'. Surrounding streets are shown, including a street labeled '26TH' at the top. A north arrow is located in the bottom left corner of the plan.

COLUMBIA COUNTY DETENTION FACILITY
389 NW Quinten St, Lake City, FL 32055

COLUMBIA COUNTY BOARD OF COUNTY
COMMISSIONERS

[illegible]

DRAWN BY	R NOVITSKY
APPROVED BY	R NOVITSKY
CHECKED BY	B HALL
DATE	JULY 24, 2020

ACCESSIBILITY COMPLIANCE - PLAN

G-140

SHEET NO. _____

DESTROY AFTER USE

