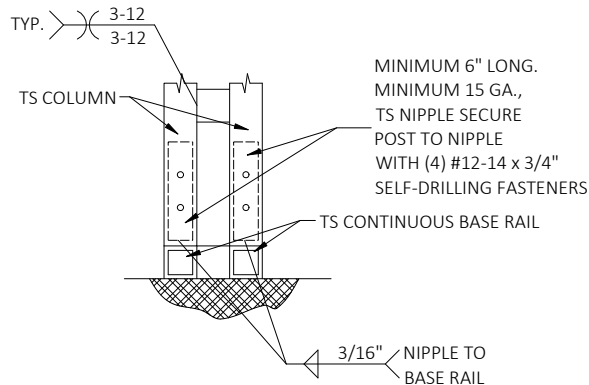
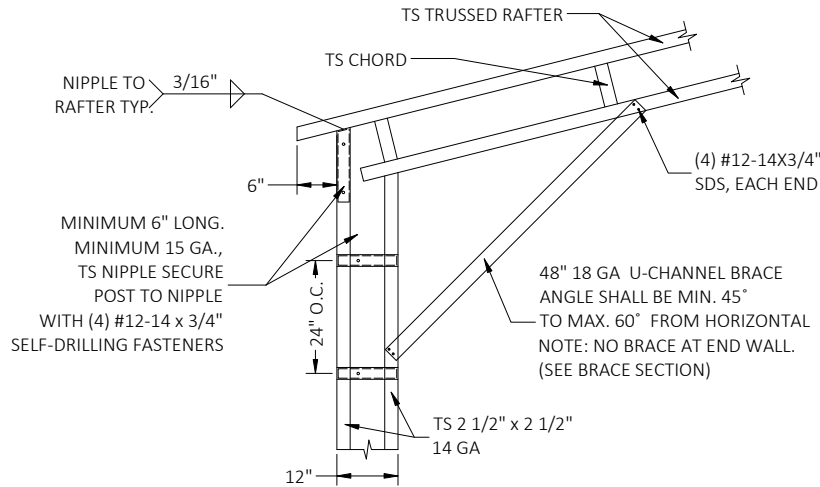


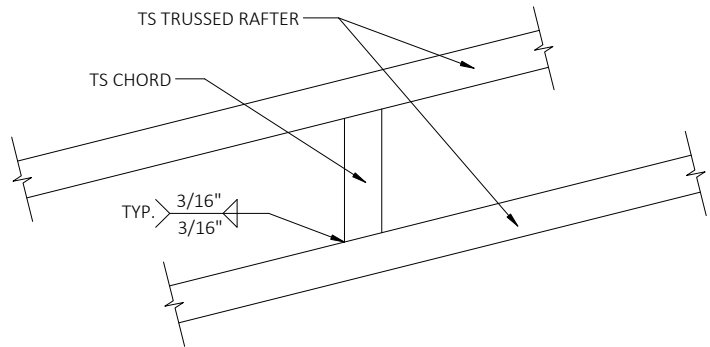
2
END POST/RAFTER
CONNECTION DETAIL
SCALE: NTS



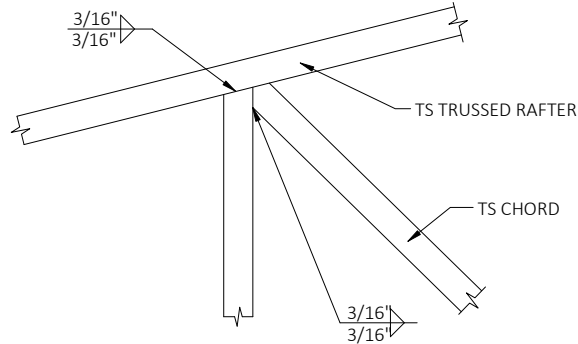
3
RAFTER POST/BASE RAIL
CONNECTION DETAIL
SCALE: NTS



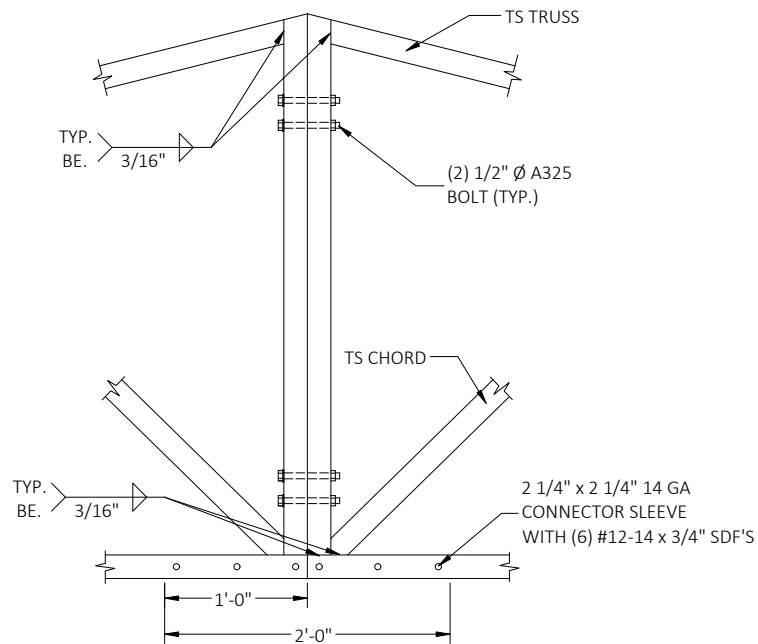
4
BOX EAVE RAFTER/CORNER POST
CONNECTION DETAIL
SCALE: NTS



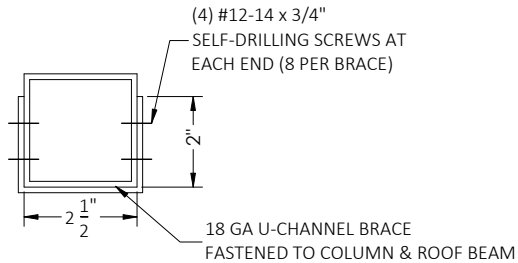
5
CHORD/RAFTER
CONNECTION DETAIL
SCALE: NTS



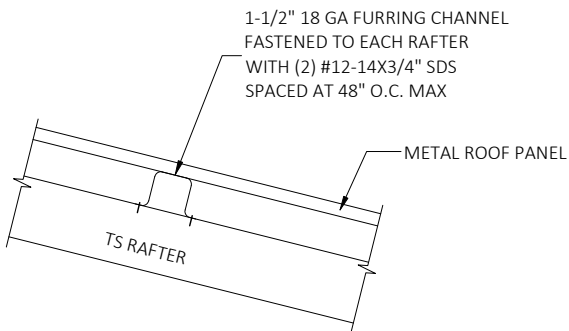
6
TRUSS POST AND CORD
TO RAFTER CONNECTION DETAIL
SCALE: NTS



7
SPLICE
CONNECTION DETAIL
SCALE: NTS

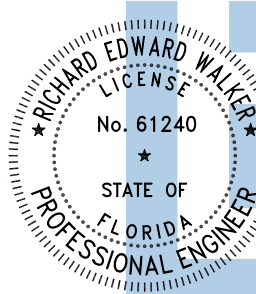


8
BRACE SECTION
SCALE: NTS



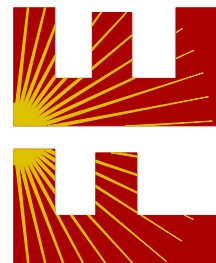
9
PANEL ATTACHMENT
(ALTERNATE FOR VERTICAL ROOF PANELS)
SCALE: NTS

This item has been digitally signed and sealed by Richard E. Walker, P.E. on the date adjacent to the seal. Printed copies of this document are not considered signed and sealed and the signature must be verified on any electronic copies.



Digitally signed
by Richard E
Walker
Date:
2025.02.13
08:29:53-05'00'

FLORIDA ENGINEERING LLC
4161 TAMiami TRAIL, UNIT 101
PORT CHARLOTTE, FLORIDA 33952
(941) 391-5980
FLEng.com
Orders@FLEng.com



PROJECT NO. 2501616

CA CERT. #30782

CONTRACTOR:
TUBULAR BUILDING SYSTEMS
P.O. BOX. 2254
LAKE CITY, FL 32056

PROJECT ADDRESS:
LAKE CITY BABE RUTH LEAGUE
1963 SW BASCOM NORRIS DR
LAKE CITY, FL 32025

DESIGN DATE: 02/07/2025

REVISION 1: DATE

REVISION 2: DATE

DRAWN BY: TCP

SCALE: NTS

SHEET:

04