

THIS ITEM HAS BEEN DIGITALLY SIGNED AND SEALED BY NATHAN P. PRESNELL, P.E., ON THE DATE ADJACENT TO THE SEAL.

PRINTED COPIES OF THIS DOCUMENT ARE NOT CONSIDERED SIGNED AND SEALED AND THE SIGNATURE MUST BE VERIFIED ON ANY ELECTRONIC COPIES.

EnCon Services, Inc.

Sign Design Calculations

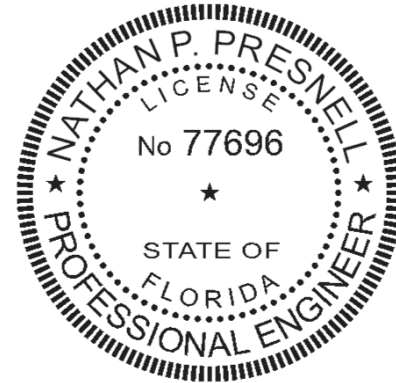
Job Description
 Dollar General
 8255 SW US Highway 27
 Fort White, FL 32038-4814
 30" Letterset wall sign - Logo
 Design per Florida Building Code, 8th Edition (2023), Section 16 Wind Load, ASCE 7-22, Load Case: D + 0.6W

PREPARED BY: EnCon Services, Inc.
 1246 Acappella Ln.
 Apollo Beach, FL 33572
 P 813-655-3373
 F 813-655-9814
 FLEB #9394

Design Specifications

Risk Category II	
Kzt	1
Exposure Factor	C
Kd	0.85
Kz	0.98
V _{ULT}	130 (mph)
GCp-GCpi	1.1 Zone 4, H < 60 Feet
Ult. Wind Pressure	39.6 (psf)

Nathan P. Presnell, PE
 FLPE 77696



Sign Information - Logo	
Height	4.98 (ft)
Width	5.60 (ft)
Thickness	1.00 (ft)
Distance grade to top	<30 (ft)

Wind Shear Force 118.45 (lb)
 Est. Weight of Sign 157 (lb)

Total Shear Force = 196.67 (lb)

Total Tension Force = 663.34 (lb)

DATE SIGNED:
 2/2/2026

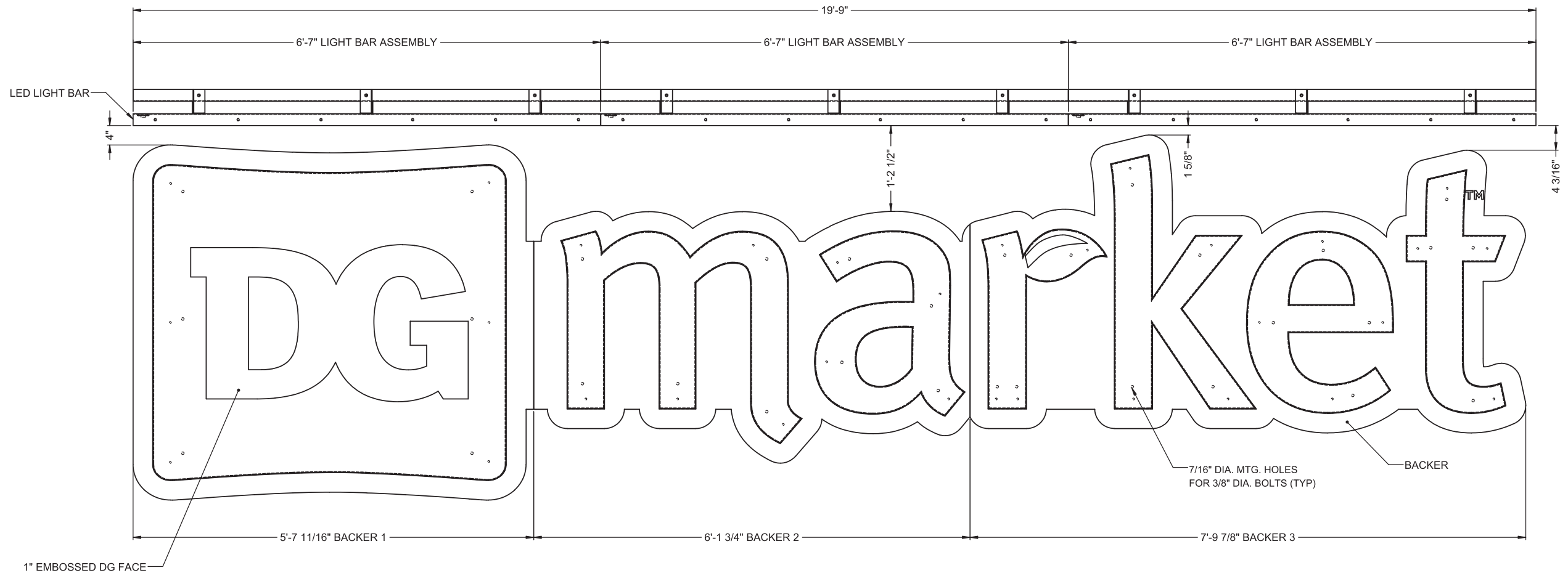
	Required	Provided
Fastener size (Nominal)	3/8	3/8
Minimum number of fasteners	6	6
Shear Force per fastener (lb)	32.8	280
Tension Force per fastener (lb)	110.6	352

Combination Tension and **0.43 < 1 O.K.**
 Shear ratio

THREADED ROD THROUGH WALL IS PREFERRED IN ALL INSTANCES. IF IT IS NOT POSSIBLE TO USE THREADED ROD, SEE CHART BELOW FOR APPROPRIATE ANCHOR SELECTION. SIZE AND NUMBER REQUIRED ARE NOTED IN THE CHART ABOVE.

WALL STRUCTURE	ANCHOR TYPE
WOOD BLOCKING	LAG BOLT (3" EMBEDMENT) THROUGH BLOCKING
EIFS OVER 5/8" PLYWOOD	LIBERTY TOGGLE BOLT OR THRU BOLT WITH SLEEVE
HOLLOW CONCRETE BLOCK, BRICK	SLEEVE ANCHOR (1-1/2" EMBEDMENT)
SOLID CONCRETE	WEDGE ANCHOR (2-1/2" EMBEDMENT)
CMU, SOLID CONCRETE, BRICK	HILTI HIT ROD W/ HY-20 ADHESIVE (3 1/2" EMBEDMENT)

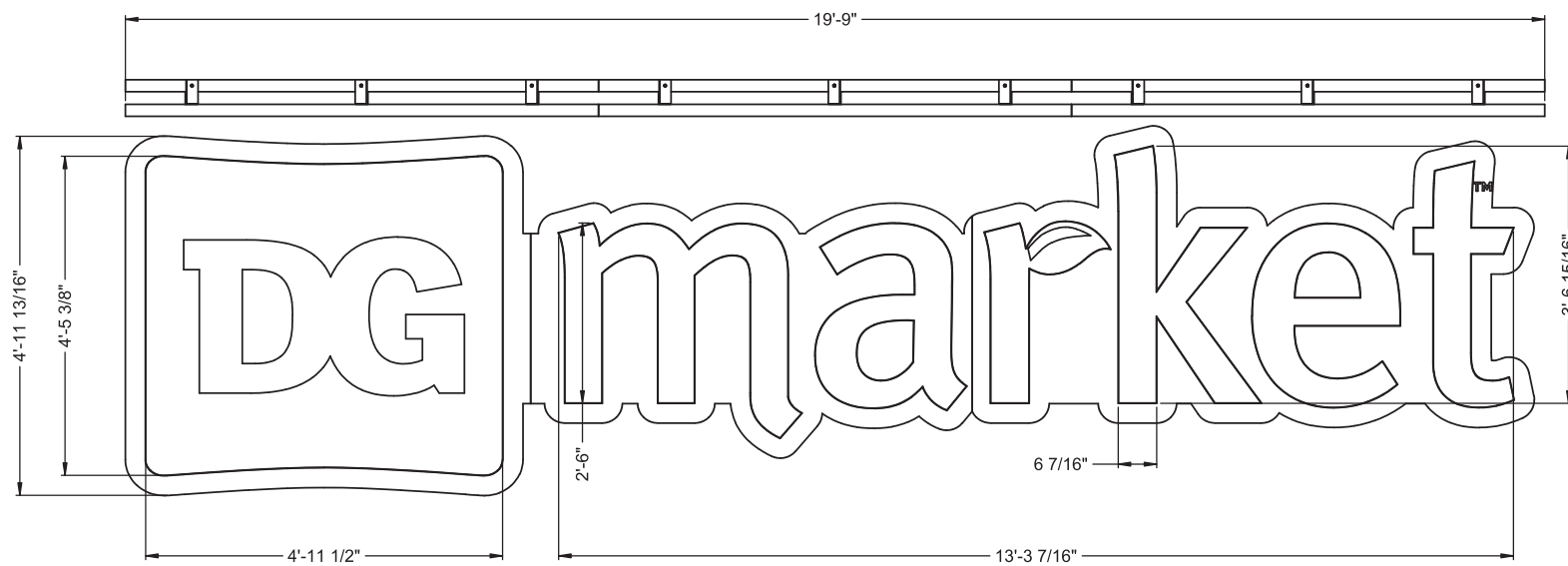
ALL ANCHORS SHALL BE CHOSEN AND PLACED IN ACCORDANCE WITH MANUFACTURERS INSTALLATION INSTRUCTIONS



FRONT VIEW W/O FACE
SCALE 1 : 10

SEE SHEET 2 FOR MOUNTING DETAILS

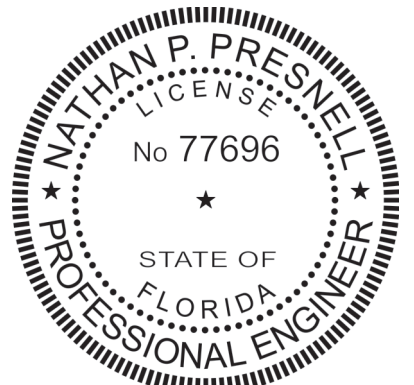
SIGN TO BE CONSTRUCTED TO 2020 NEC 600 STANDARD
SIGN TO BEAR UL LABEL
SIGN TO HAVE ELECTRICAL DISCONNECT ON THE EXTERIOR



FRONT VIEW W/ FACE
SCALE 1 : 16

THIS ITEM HAS BEEN DIGITALLY SIGNED AND SEALED BY
NATHAN P. PRESNELL, P.E., ON THE DATE ADJACENT TO THE
SEAL.
PRINTED COPIES OF THIS DOCUMENT ARE NOT CONSIDERED
SIGNED AND SEALED AND THE SIGNATURE MUST BE VERIFIED
ON ANY ELECTRONIC COPIES.

FLORIDA BUILDING CODE,
8th EDITION (2023)
SECTION 16 WIND LOAD, ASCE 7-22
130 MPH WIND LOAD, V_{ULT}
RISK CATEGORY II
EXPOSURE C



ENCON SERVICES, INC.
1246 ACAPPELLA LN.
APOLLO BEACH, FL 33572
813-655-3373, FLEB #9394

NATHAN P. PRESNELL, PE 77696
DATE SIGNED: 2/2/2026



INSTALLATION
DRAWING

THESE DRAWINGS ARE THE EXCLUSIVE
PROPERTY OF EVERBRITE, LLC. USE OF,
OR DUPLICATION IN ANY MANNER WITH-
OUT EXPRESS WRITTEN PERMISSION OF
EVERBRITE, LLC IS PROHIBITED.

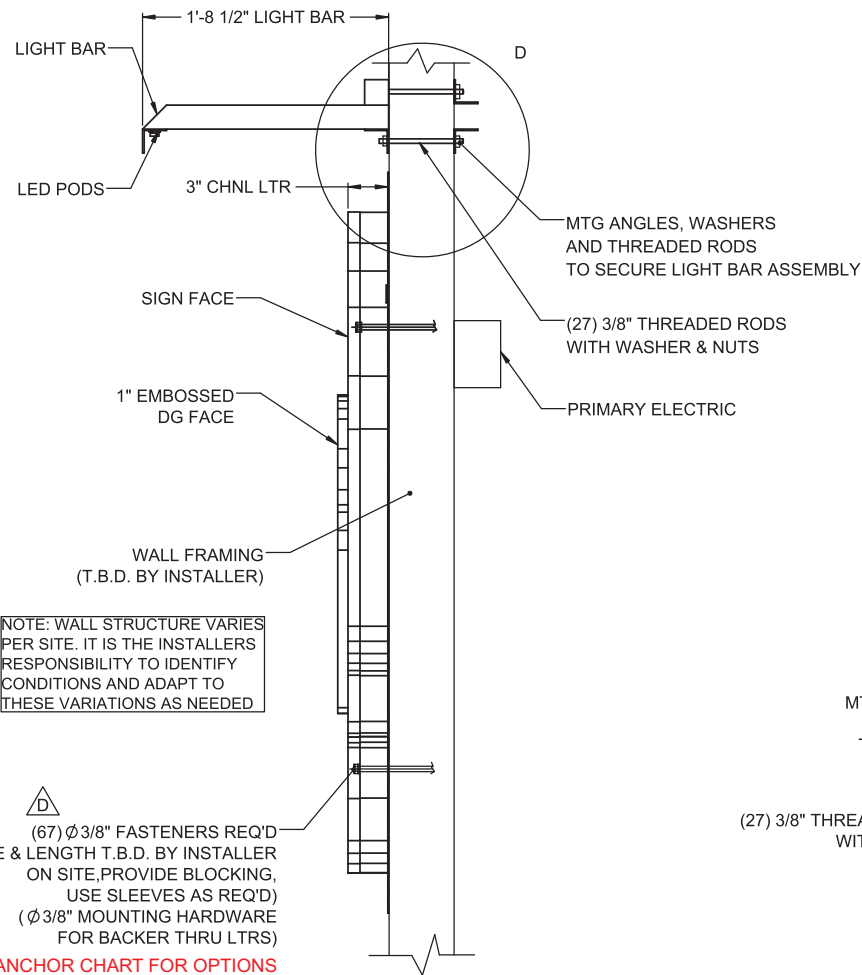
REV	DATE	BY	CHK	DESCRIPTION
D	12/29/2025	MCM	CJB	REVISED SIGN MTG. FASTENER QUANTITY
C	12/12/2025	MCM	CJB	REVISED LIGHTBAR ASSY & MTG. THREADED ROD QUANTITY
B	9/4/2025	MCM	CJB	REVISED DG FACE, SIGN SPECIFICATION & BACKER MATERIAL.
A	7/8/2025	MCM	CJB	RELEASED FOR INSTALLATION

DRAWN BY	TECHNO-MCM
DATE	7/3/2025
CHECKED BY	CJB
DATE	7/8/2025

SITE	Dollar General 8255 SW US Highway 27 Fort White, FL 32038-4814
SCALE	AS SHOWN
SHEET	1 OF 2

TITLE	DOLLAR GENERAL SIGN, DG 4'-11 13/16" X 19'-9" NI ALUM BACKR W/LIGHT BAR	HWL
PROJECT NO.	517816	
DRAWING NO.	IN517816F	
REV	D	

SEAL ALL PENETRATIONS



TYPICAL WALL SECTION
SCALE : NTS

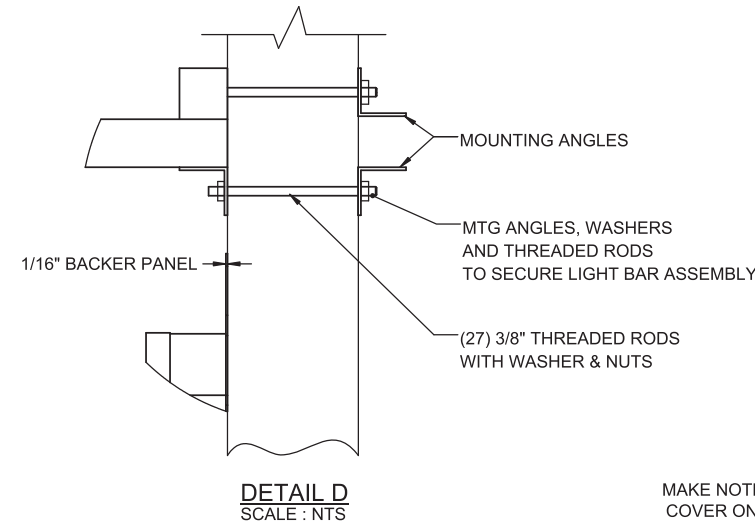
NOTE: WALL STRUCTURE VARIES PER SITE. IT IS THE INSTALLERS RESPONSIBILITY TO IDENTIFY CONDITIONS AND ADAPT TO THESE VARIATIONS AS NEEDED

(67) ϕ 3/8" FASTENERS REQ'D (TYPE & LENGTH T.B.D. BY INSTALLER ON SITE, PROVIDE BLOCKING, USE SLEEVES AS REQ'D) (ϕ 3/8" MOUNTING HARDWARE FOR BACKER THRU LTRS)
SEE ANCHOR CHART FOR OPTIONS

SIGN SPECIFICATIONS
DIMENSIONS: 4'-11 13/16" X 19'-9"

AREA: 98.43 SQ. FT.
ESTIMATED WEIGHT: 157 LBS

LIGHT BAR SPECIFICATIONS
LED: (99) PRINCIPAL STREET FIGHTER POD 3 LEDS
TOTAL DRAW 130.68 WATTS (1.32 WATTS PER LED)
POWER SUPPLY: (2) PWRSPLY, PRIPL-120W-12V-HE
INPUT: 120-277V .61 AMPS EACH
OUTPUT: 12VDC
TOTAL: (1.22 AMPS) @120V
USE QTY OF (1), 20 AMP CIRCUIT



DETAIL D
SCALE : NTS

GENERAL NOTES
INSTALLER TO PROVIDE COMPLETION PHOTOS OF MOUNTING/CONNECTION POINTS, WIRE ROUTING, OVERALL ELEVATION, & SEALED PENETRATIONS.

THIS CANOPY IS INTENDED TO BE INSTALLED IN ACCORDANCE WITH THE REQUIREMENTS OF ARTICLE 600 OF THE NATIONAL ELECTRIC CODE AND/OR OTHER APPLICABLE LOCAL CODES. THIS INCLUDES PROPER GROUNDING & BONDING OF THE SIGN & INSTALLING DISCONNECT SWITCHES IF NOT FACTORY INSTALLED ON THE SIGN.

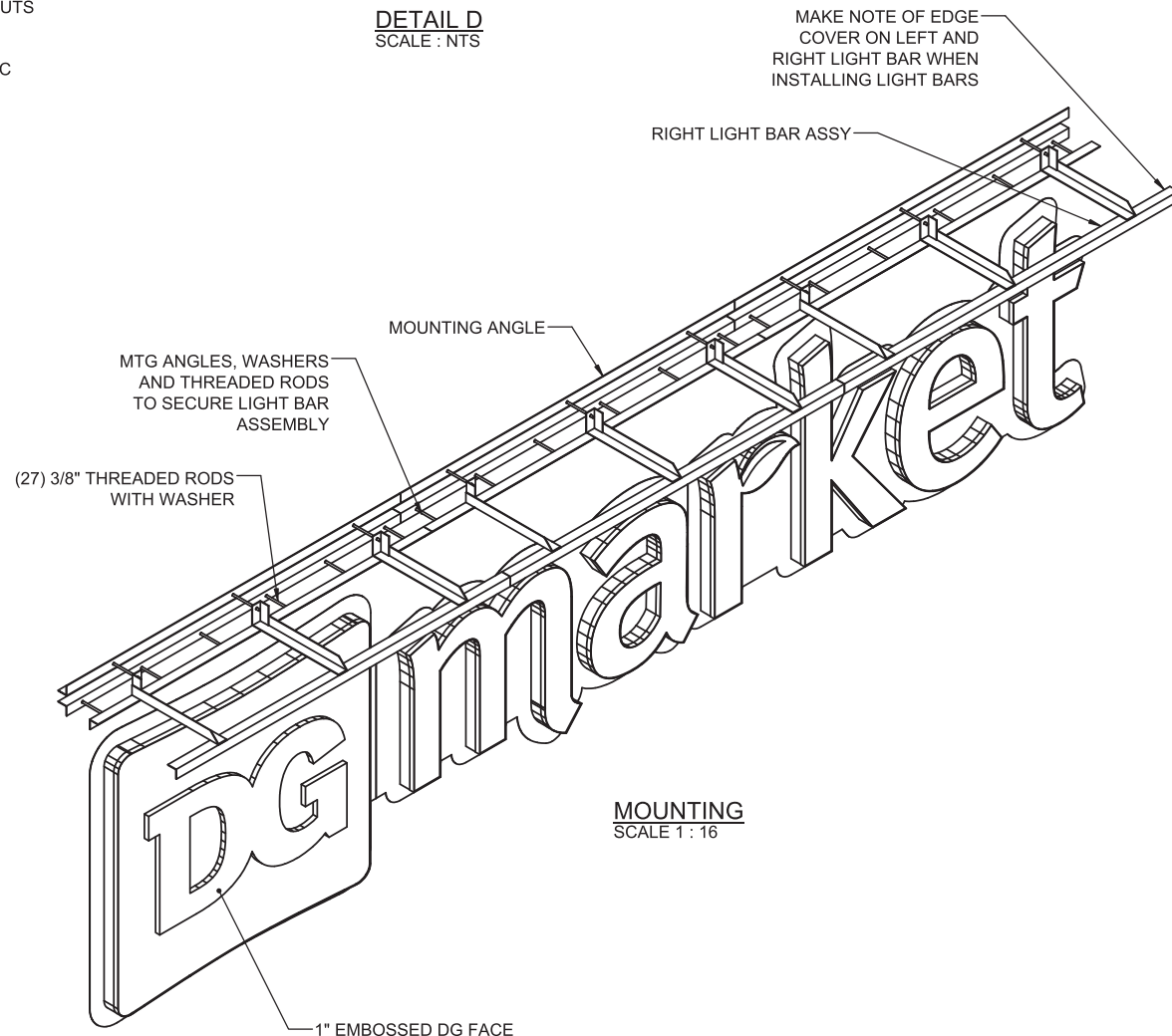
CANOPY ASSEMBLY IS INTENDED FOR OUTDOOR WET LOCATION.

INSTALLER TO BE SURE SIGNS ARE PROPERLY INSTALLED, CONNECTED AND GROUNDED.

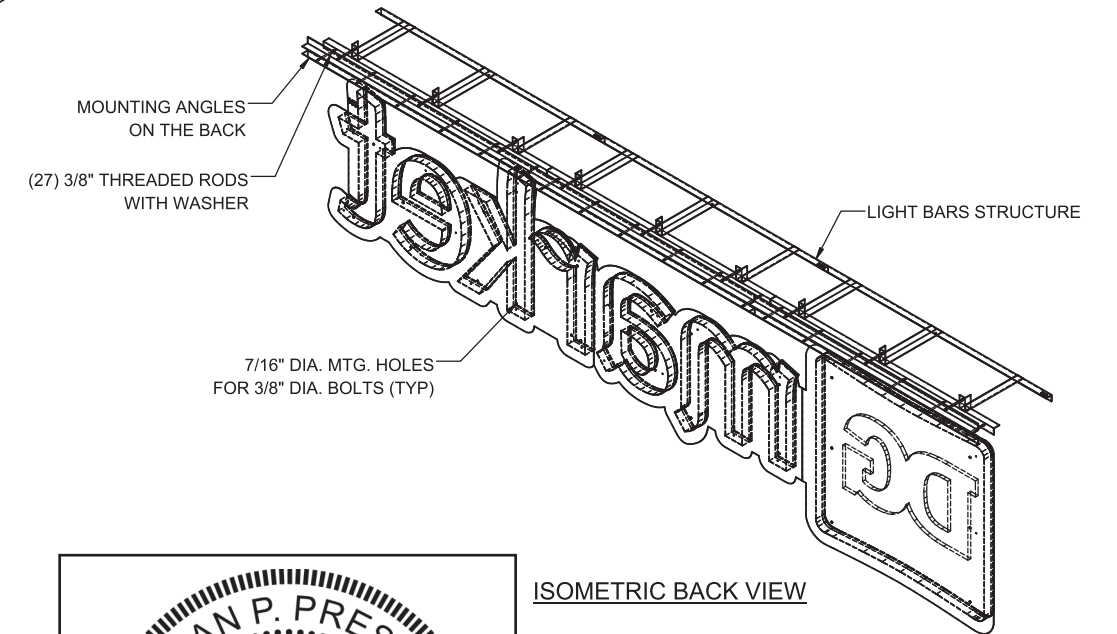
THIS DRAWING IS TO BE USED FOR INSTALLATION PURPOSES ONLY, NOT TO BE USED FOR MANUFACTURING.

INSTALLATION INSTRUCTIONS

1. OPEN PACKAGING CAREFULLY AND INSPECT FOR DAMAGE.
2. DETERMINE BACKER & ANGLE LOCATION AND TAPE UP THE TEMPLATE (IF PROVIDED) ON THE SURFACE TO WHICH IT WILL BE INSTALLED, RECEIVE CONFIRMATION FROM THE CLIENT.
3. LAYOUT AND PRE-DRILL ALL MOUNTING AND ELECTRICAL HOLES REQUIRED FOR MOUNTING THE BACKER & ANGLE.
4. ATTACH THE HORIZONTAL BLOCKING BEHIND WALL FRAMING SO ALL CONNECTION POINTS HAVE SUPPORT (IF REQUIRED).
5. USING BOOM, RAISE ANGLE INTO POSITION PER ELEVATION DRAWING, SET PROPER ANGLE PITCH (FALL REAR TO FRONT).
6. REMOVE BOTTOM PANEL SO THAT MOUNTING AREA IS REVEALED.
7. ALIGN BACKER & ANGLE TO MATCHING PRE-DRILLED HOLES WHILE INSERTING FASTENERS THROUGH BACKER & ANGLE, WALL AND BLOCKING. FASTEN WITH HARDWARE. USE PVC SLEEVES TO PROTECT BUILDING FINISH IF NECESSARY.
8. REMOVE LIFTING ANGLES, REPLACE HARDWARE & SEAL WATER TIGHT, SEAL ANGLE AT WALL ACROSS TOP & DOWN THE SIDES.
9. MAKE ELECTRICAL CONNECTIONS TO REMOTE POWER SUPPLY/PRIMARY WIRING THROUGH DRILLED ELECTRICAL HOLES.
10. TEST THE LIGHT BAR ASSY FOR PROPER FUNCTION AND LIGHTING.
11. PERFORM TOUCH-UP AS REQUIRED.
12. CLEAN INSTALLATION WORK SITE OF ALL EXCESS MATERIALS & DEBRIS. DO NOT DISCARD ANY MATERIAL OR DEBRIS INTO ON SITE DUMPSTERS.



MOUNTING
SCALE 1 : 16



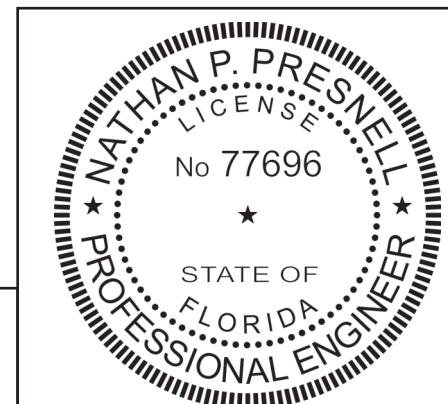
ISOMETRIC BACK VIEW

SIGN MOUNTING HEIGHT TO BE 30FT MAXIMUM

ANCHOR TO BE THRU BOLTS IF POSSIBLE, ALTERNATE ANCHORS PER WALL TYPE SHOWN BELOW FOR USE IF THRU BOLTING IS NOT POSSIBLE

ANCHOR SCHEDULE: 3/8" DIA. ANCHORS	
QUANTITY: AS NOTED	
WALL STRUCTURE	ANCHOR TYPE
WOOD BLOCKING	LAG BOLT (3" EMBEDMENT) THRU BLOCKING
EIFS OVER 5/8" PLYWOOD	LIBERTY TOGGLE BOLT OR THRU BOLT WITH SLEEVE
HOLLOW CONCRETE BLOCK, BRICK	SLEEVE ANCHOR (1-1/2" EMBEDMENT)
SOLID CONCRETE	WEDGE ANCHOR (2-1/2" EMBEDMENT)
CMU, SOLID CONCRETE, BRICK	HILTI HIT ROD W/ HY-20 ADHESIVE (3 1/2" EMBEDMENT)

ALL ANCHORS SHALL BE CHOSEN AND PLACED IN ACCORDANCE WITH MANUFACTURERS INSTALLATION INSTRUCTIONS



NATHAN P. PRESNELL, PE 77696
DATE SIGNED: 2/2/2026

THIS ITEM HAS BEEN DIGITALLY SIGNED AND SEALED BY NATHAN P. PRESNELL, P.E., ON THE DATE ADJACENT TO THE SEAL.
PRINTED COPIES OF THIS DOCUMENT ARE NOT CONSIDERED SIGNED AND SEALED AND THE SIGNATURE MUST BE VERIFIED ON ANY ELECTRONIC COPIES.

ENCON SERVICES, INC.
1246 ACAPPELLA LN.
APOLLO BEACH, FL 33572
813-655-3373, FLEB #9394



INSTALLATION DRAWING

THESE DRAWINGS ARE THE EXCLUSIVE PROPERTY OF EVERBRITE, LLC. USE OF, OR DUPLICATION IN ANY MANNER WITHOUT EXPRESS WRITTEN PERMISSION OF EVERBRITE, LLC IS PROHIBITED.

REV	DATE	BY	CHK	DESCRIPTION
D	12/29/2025	MCM	CJB	REVISED SIGN MTG. FASTENER QUANTITY
C	12/12/2025	MCM	CJB	REVISED LIGHTBAR ASSY & MTG. THREADED ROD QUANTITY
B	9/4/2025	MCM	CJB	REVISED DG FACE, SIGN SPECIFICATION & BACKER MATERIAL.
A	7/8/2025	MCM	CJB	RELEASED FOR INSTALLATION

DRAWN BY	TECHNO-MCM	SITE	Dollar General 8255 SW US Highway 27 Fort White, FL 32038-4814
DATE	7/3/2025	CHECKED BY	CJB
DATE	7/8/2025	SCALE	AS SHOWN
		SHEET	2 OF 2

TITLE	DOLLAR GENERAL SIGN, DG 4'-11 13/16" X 19'-9" NI ALUM BACKR W/LIGHT BAR		[HWL]
PROJECT NO.	517816	DRAWING NO.	IN517816F
REV			D

THIS ITEM HAS BEEN DIGITALLY SIGNED AND SEALED BY
NATHAN P. PRESNELL, P.E., ON THE DATE ADJACENT TO THE
SEAL.

PRINTED COPIES OF THIS DOCUMENT ARE NOT CONSIDERED
SIGNED AND SEALED AND THE SIGNATURE MUST BE VERIFIED
ON ANY ELECTRONIC COPIES.

EnCon Services, Inc.

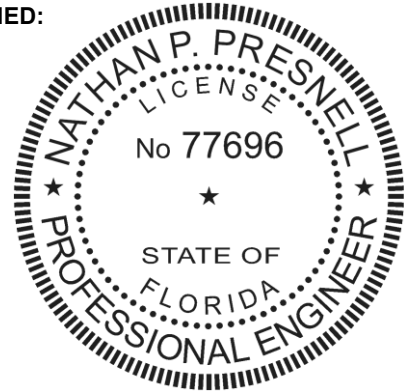
Sign Design Calculations

Job Description
Dollar General
8255 SW US Highway 27
Fort White, FL 32038-4814
8'-0" Monument
Design per Florida Building Code, 8th Edition (2023),
Section 16 Wind Load, ASCE 7-22, Load Case: D + 0.6W

PREPARED BY:
EnCon Services, Inc., FLEB #9394
1246 Acappella Ln., Apollo Beach, FL 33572
813-655-3373
Nathan P. Presnell, PE 77696

DATE SIGNED:

2/2/2026



Risk Category II
Kzt 1
Exposure C
Kd 0.85
Kz 0.85
V_{ULT} 130 mph
Cf 1.44
G 0.85
Number of Poles 1
Ult. Wind Pressure (PSF) **38**

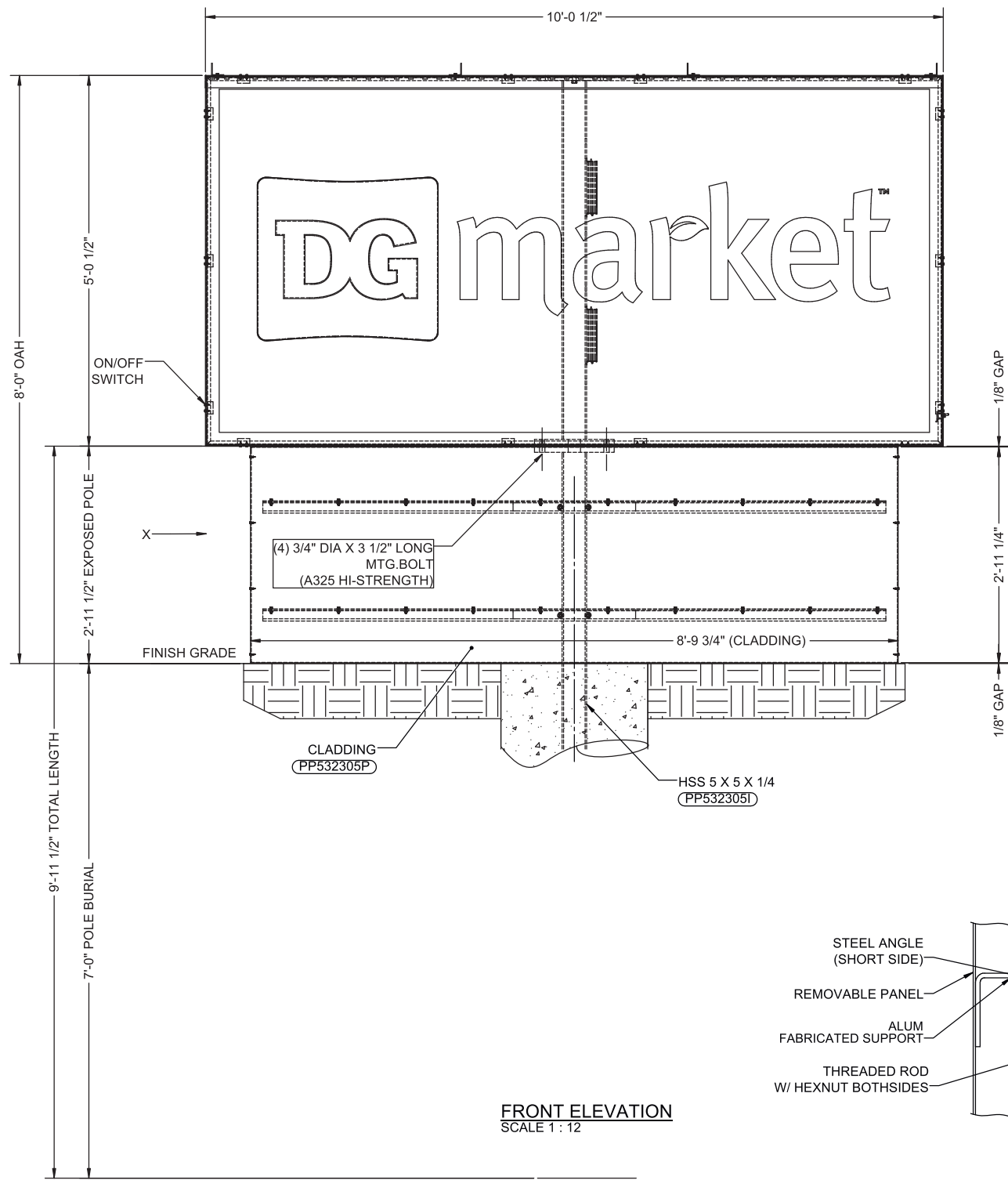
Sign	Area (sf)	Distance to Center (ft)	P = Force (lb)	Moment (ft-lb)
Sign	80.32	4.40	1845	8116
			0	0
			0	0
			0	0
			Totals	1,845
				8,116

Required Flexural Strength (kip-ft) 8.1 per pole
Provided Flexural Strength (kip-ft) 17.5 HSS 5"x5"x1/4" A500 B Steel Tube
Flexural Ratio 0.46

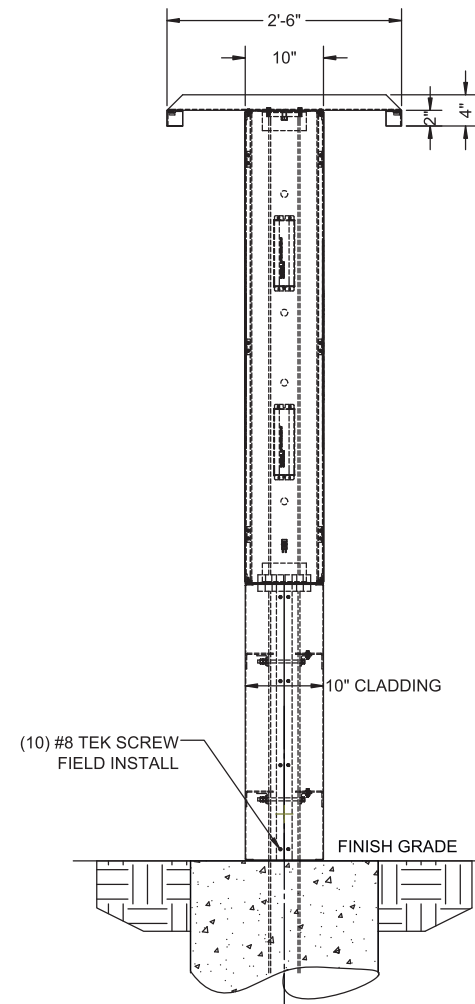
Base Design

Number of Bases 1
Diagonal B (FT) 2.00
Lateral soil pressure (LB/SF/FT) 150
Depth (Estimated) (FT) 7.5
S1 750
Design Depth (FT) 5.42 Ft

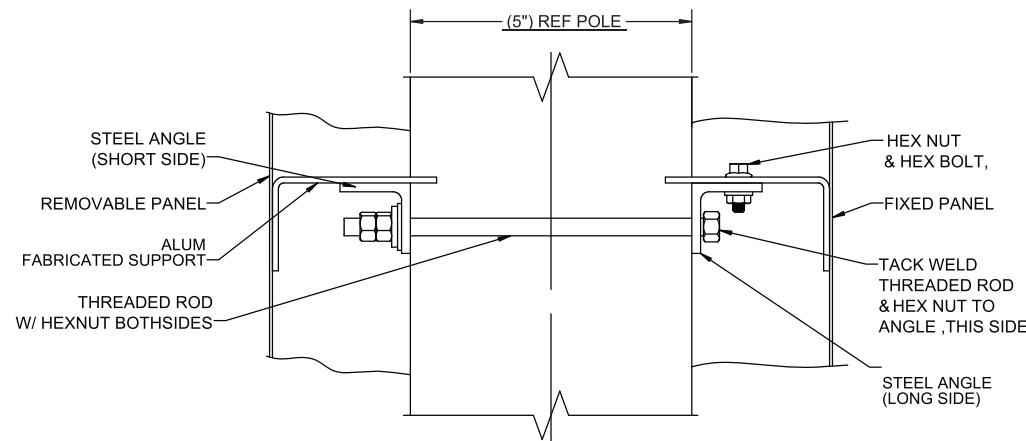
Base Size Required
7.5 FT Deep
2.0 FT Diameter



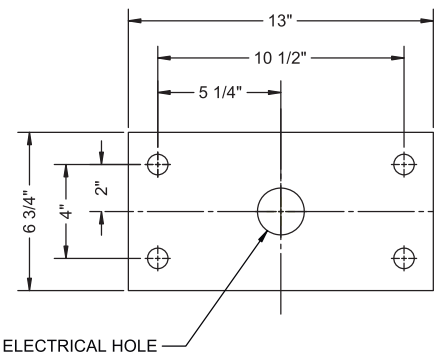
FRONT ELEVATION
SCALE 1 : 12



SIDE ELEVATION
SCALE 1 : 12



CLADDING MOUNTING DETAIL
VIEW AT-'X'
SCALE : NTS



SIGN MTG. PATTERN
SCALE 1 : 4

GENERAL NOTES
THIS SIGN IS INTENDED TO BE INSTALLED IN ACCORDANCE WITH THE REQUIREMENTS OF ARTICLE 600 OF THE NATIONAL ELECTRIC CODE AND/OR OTHER APPLICABLE LOCAL CODES. THIS INCLUDES PROPER GROUNDING AND BONDING OF THE SIGN AND INSTALLING DISCONNECT SWITCHES IF NOT FACTORY INSTALLED ON THE SIGN.
SIGN ASSEMBLY IS INTENDED FOR OUTDOOR WET LOCATION.
INSTALLER TO VERIFY SIGNS ARE PROPERLY INSTALLED, CONNECTED AND GROUNDED.
THIS DRAWING IS FOR INSTALLATION PURPOSES ONLY AND NOT TO BE USED FOR MANUFACTURING.

LIFTING HOLE NOTE
ANY LIFTING HOLES CREATED ARE THE RESPONSIBILITY OF THE INSTALLER. LIFTING HOLES ARE TO BE SEALED BY A CAP PLATE, WELDED OVER TO COVER AND THEN PAINTED.

WELDING NOTE
ANY REQUIRED WELDING IS TO BE COMPLETED BY AN AWS CERTIFIED WELDER QUALIFIED IN THE APPLICABLE POSITIONS NEEDED. PROOF OF WELDER CERTIFICATION REQUIRED (COPY OF WELDER CERTIFICATION, PHOTO OF AWS CERTIFICATION CARD OF PERSON DOING THE WELDING).

PHOTO REQUIREMENTS
INSTALLER TO PROVIDE COMPLETION PHOTOS OF THE FOLLOWING:

- MATCH PLATE/SIGN CONNECTIONS
- BEFORE AND AFTER PHOTOS OF ALL PLUG WELDS, CAP PLATE WELDS, AND ANY OTHER WELDED CONNECTIONS DONE IN THE FIELD
- ELECTRICAL WIRING
- ALL SIGNS ILLUMINATING (PREFERABLY SHOWING LED'S OR LAMPS ILLUMINATING)
- OVERALL ELEVATION

INSTALLATION INSTRUCTIONS

- MOUNT SIGNAGE TO POLE. (INSTALLER TO PROVIDE WIRE BETWEEN SIGN AND BASE OF POLE.)
- MAKE FINAL ELECTRICAL HOOK-UP. (ALL ELECTRICAL TO MEET LOCAL CODES.)
- TEST SIGNAGE FOR PROPER FUNCTION AND LIGHTING.
- REMOVE ANY LIFTING BRACKETS AND REINSTALL BOLTS.
- CLEAN UP AREA AND REMOVE ANY PACKING MATERIAL. DO NOT DISCARD ANY MATERIAL OR DEBRIS INTO ON SITE DUMPSTERS.

EVERBRITE TO FURNISH:

- 5'-0 1/2" X 10'-0 1/2" SIGN
- MOUNTING POLE
- CLADDING
- ALL MOUNTING HARDWARE

INSTALLER TO FURNISH
ALL ELECTRICAL COMPONENTS REQD.
GENERAL CONTRACTOR TO FURNISH
PRIMARY WIRES FROM BUILDING TO SIGN

ELECTRICAL SPECIFICATIONS:

5'-0 1/2" X 10'-0 1/2" SIGN
LED: (104) PRINCIPAL STREET FIGHTER POD 3 LED'S
TOTAL DRAW: 137.28 WATTS (1.32 WATTS PER LED)
POWER SUPPLY: (2) 12V 120W POWER SUPPLY
POWER SUPPLY MOUNTED INSIDE SIGN
4.8 AMPS @ 120V
AREA : 50.6 SQ. FT.
EST. WEIGHT OF THE SIGN - 280 LBS
POLE SPECIFICATION:
APPROX. POLE WEIGHT: 142 LBS
BURIED POLE LENGTH: 7'-0"
EXPOSED POLE LENGTH: 2'-11 1/2"
TOTAL POLE LENGTH: 9'-11 1/2"

THIS ITEM HAS BEEN DIGITALLY SIGNED AND SEALED BY NATHAN P. PRESNELL, P.E., ON THE DATE ADJACENT TO THE SEAL.
PRINTED COPIES OF THIS DOCUMENT ARE NOT CONSIDERED SIGNED AND SEALED AND THE SIGNATURE MUST BE VERIFIED ON ANY ELECTRONIC COPIES.

SIGN TO BE CONSTRUCTED TO 2020 NEC 600 STANDARD
SIGN TO BEAR UL LABEL
SIGN TO HAVE ELECTRICAL DISCONNECT ON THE EXTERIOR

FLORIDA BUILDING CODE,
8th EDITION (2023)
SECTION 16 WIND LOAD, ASCE 7-22
130 MPH WIND LOAD, V_{ULT}
RISK CATEGORY II
EXPOSURE C

ENCON SERVICES, INC.
1246 ACAPPELLA LN.
APOLLO BEACH, FL 33572
813-655-3373, FLEB #9394



NATHAN P. PRESNELL, PE 77696
DATE SIGNED: 2/2/2026



INSTALLATION DRAWING

THESE DRAWINGS ARE THE EXCLUSIVE PROPERTY OF EVERBRITE, LLC. USE OF, OR DUPLICATION IN ANY MANNER WITHOUT EXPRESS WRITTEN PERMISSION OF EVERBRITE, LLC IS PROHIBITED.

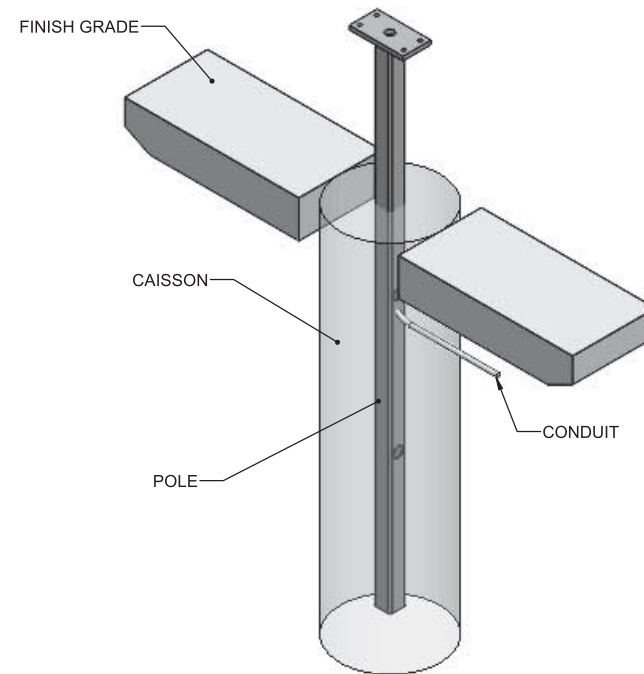
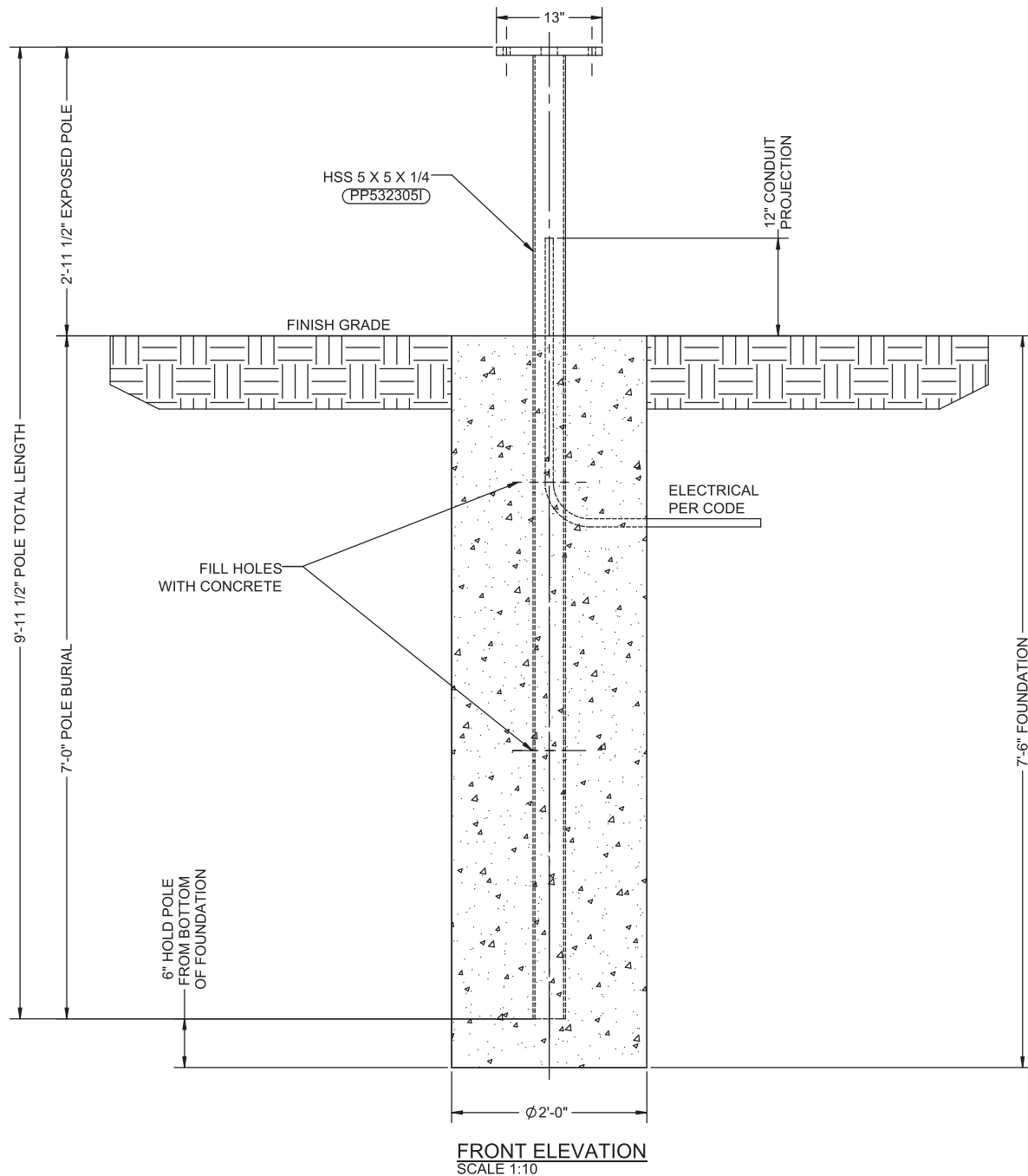
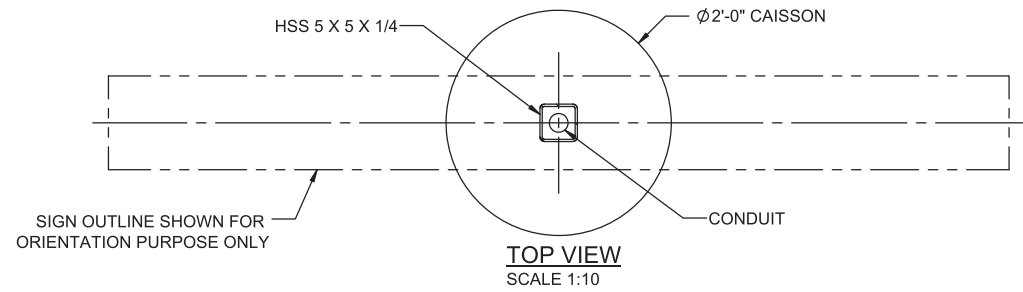
REV	DATE	BY	CHK	DESCRIPTION
A	1/21/2026	USK	CJB	RELEASED FOR INSTALLATION

DRAWN BY	TECHNO-USK
DATE	1/19/2026
CHECKED BY	CJB
DATE	1/21/2026

SITE	Dollar General 8255 SW US Highway 27 Fort White, FL 32038-4814
SCALE	AS SHOWN
SHEET	1 OF 3

TITLE	DOLLAR GENERAL 2'-11 1/2" EXPOSED POLE FOR 5'-0 1/2" X 10'-0 1/2" SIGN @ 8'-0" OAH	[HWL]
PROJECT NO.	532305	DRAWING NO.
	IN532305I	REV
		A

INSTALLER NOTE: POLE AND CONDUIT ARE CENTERED ON $\phi 2'-0"$ CAISSON.



GENERAL NOTES

THIS SIGN IS INTENDED TO BE INSTALLED IN ACCORDANCE WITH THE REQUIREMENTS OF ARTICLE 600 OF THE NATIONAL ELECTRIC CODE AND/OR OTHER APPLICABLE LOCAL CODES. THIS INCLUDES PROPER GROUNDING AND BONDING OF THE SIGN AND INSTALLING DISCONNECT SWITCHES IF NOT FACTORY INSTALLED ON THE SIGN.

THIS DRAWING IS FOR INSTALLATION PURPOSES ONLY AND NOT TO BE USED FOR MANUFACTURING.

CONCRETE SPECIFICATION

THE REQUIRED 0.87 CU. YDS. OF FOUNDATION CONCRETE SHALL HAVE A MIN. COMPRESSIVE STRENGTH OF 3,000 PSI @ 28 DAYS. REINFORCING STEEL SHALL HAVE A MIN. YIELD STRENGTH OF 60,000 PSI. RECOMMENDED MIN. CURE TIME OF 7 DAYS BEFORE PROCEEDING WITH INSTALLATION.

DESIGN NOTE

CONCRETE BASE DESIGNED USING A LATERAL SOIL BEARING CAPACITY OF 150 PSF / FT. OF DEPTH. IF THESE SOIL CONDITIONS DO NOT EXIST AT THE FOUNDATION LOCATION, IT IS THE INSTALLER'S RESPONSIBILITY TO NOTIFY EVERBRITE, LLC PRIOR TO PERFORMING ADDITIONAL EXCAVATION OR ANY CONCRETE PLACEMENT.

INSTALLATION INSTRUCTIONS

1. CONFIRM LOCATION OF THE FOUNDATION WITH ACCOUNT MANAGER AND SITE PLAN.
2. CONTACT THE LOCAL AUTHORITY ON 8-1-1 UTILITY LOCATING SERVICE AT LEAST 3- BUSINESS DAYS BEFORE ANY EXCAVATION BEGINS.
3. MARK THE LOCATION OF THE FOUNDATION AND CONFIRM NO UTILITIES WILL OBSTRUCT THE FOUNDATION OR SIGN STRUCTURE ONCE ERECTED. IF A CONFLICT IS FOUND, CONTACT EVERBRITE IMMEDIATELY FOR DIRECTION ON HOW TO PROCEED.
4. CONFIRM HEIGHT OF FINAL GRADE ON SITE BASED ON EXISTING CONDITIONS.
5. ONCE FOUNDATION LOCATION IS APPROVED AND NO OBSTRUCTIONS ARE FOUND, EXCAVATE THE FOUNDATION TO THE SIZE INDICATED, AND REMOVE SPOILS FROM SITE UNLESS DIRECTED OTHERWISE BY EVERBRITE.
6. TAKE PHOTO SHOWING EXCAVATED HOLE
7. SET ANY FORMS THAT MAY BE REQUIRED TO ACHIEVE THE REQUIRED FOUNDATION HEIGHT ABOVE FINAL GRADE.
8. SET POLE AND ELECTRICAL CONDUIT STUBS AS ILLUSTRATED.
9. ENSURE POLE AND CONDUIT ARE SET TO THE REQUIRED HEIGHT, PLUMB AND CENTERED IN THE FOUNDATION, AND ORIENTED IN THE CORRECT POSITION TO THE DRIVE THRU LANE.
10. TAKE PHOTO SHOWING HOLE, CONDUIT, AND ANY FORMS SET PRIOR TO POURING CONCRETE.
11. POUR CONCRETE AND SMOOTH THE TOP SURFACE.
12. TAKE PHOTO SHOWING POURED FOUNDATION.
13. ALLOW RECOMMENDED CURE TIME FOR THE CONCRETE BEFORE SETTING POLES/CABINETS.

EVERBRITE TO FURNISH

MOUNTING POLE

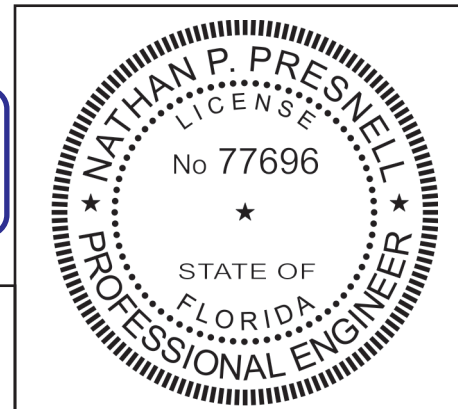
INSTALLER TO FURNISH

1. ALL ELECTRICAL COMPONENTS REQUIRED
2. FOUNDATION

GENERAL CONTRACTOR TO FURNISH

PRIMARY WIRES FROM BUILDING TO SIGN.

THIS ITEM HAS BEEN DIGITALLY SIGNED AND SEALED BY NATHAN P. PRESNELL, P.E., ON THE DATE ADJACENT TO THE SEAL.
PRINTED COPIES OF THIS DOCUMENT ARE NOT CONSIDERED SIGNED AND SEALED AND THE SIGNATURE MUST BE VERIFIED ON ANY ELECTRONIC COPIES.



ENCON SERVICES, INC.
1246 ACAPPELLA LN.
APOLLO BEACH, FL 33572
813-655-3373, FLEB #9394

NATHAN P. PRESNELL, PE 77696
DATE SIGNED: 2/2/2026

FOUNDATION DRAWING
THESE DRAWINGS ARE THE EXCLUSIVE PROPERTY OF EVERBRITE, LLC. USE OF, OR DUPLICATION IN ANY MANNER WITHOUT EXPRESS WRITTEN PERMISSION OF EVERBRITE, LLC IS PROHIBITED.

REV	DATE	BY	CHK	DESCRIPTION
A	1/21/2026	USK	CJB	RELEASED FOR INSTALLATION

DRAWN BY	TECHNO-USK
DATE	1/19/2026
CHECKED BY	CJB
DATE	1/21/2026

SITE	Dollar General 8255 SW US Highway 27 Fort White, FL 32038-4814
SCALE	AS SHOWN
SHEET	2 OF 3

TITLE	DOLLAR GENERAL 2'-11 1/2" EXPOSED POLE FOR 5'-0 1/2" X 10'-0 1/2" SIGN @ 8'-0" OAH		
PROJECT NO.	532305	DRAWING NO.	FD532305I
REV	A		

MATERIAL SPECIFICATIONS

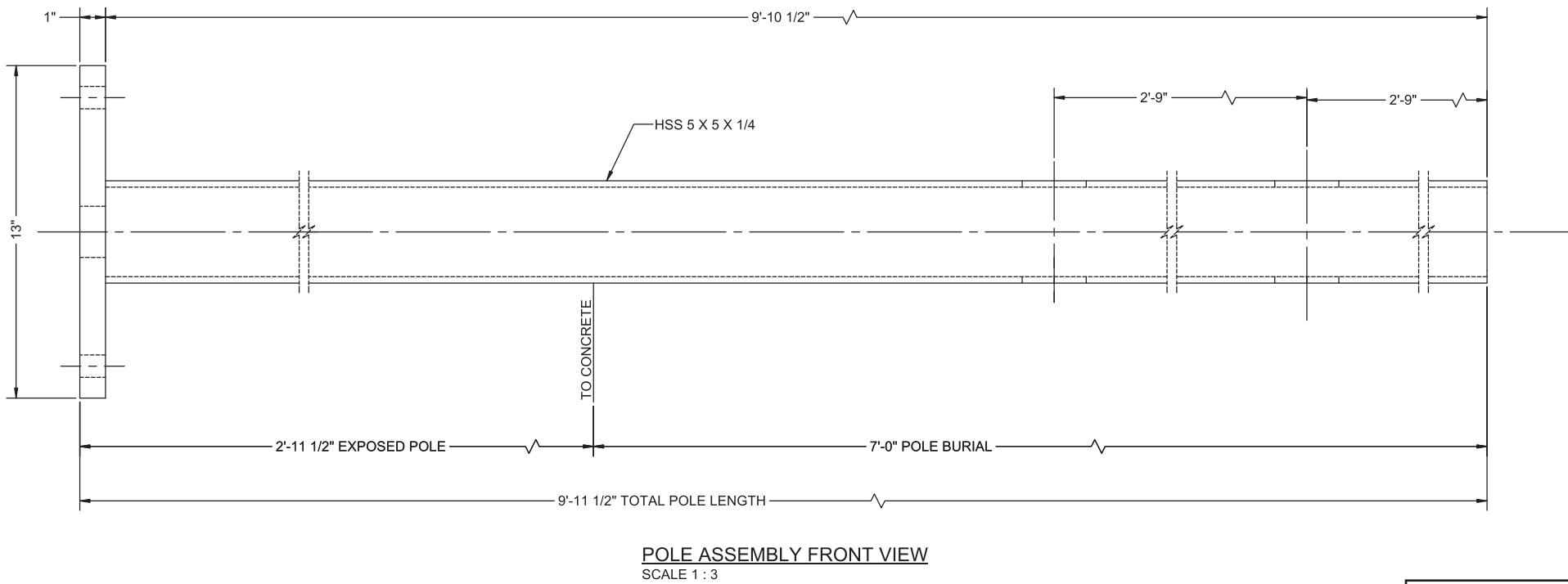
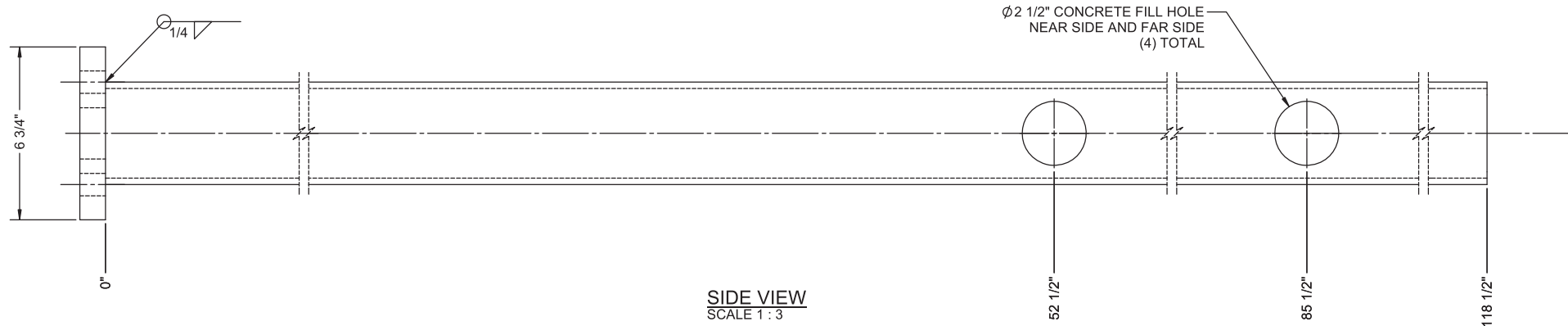
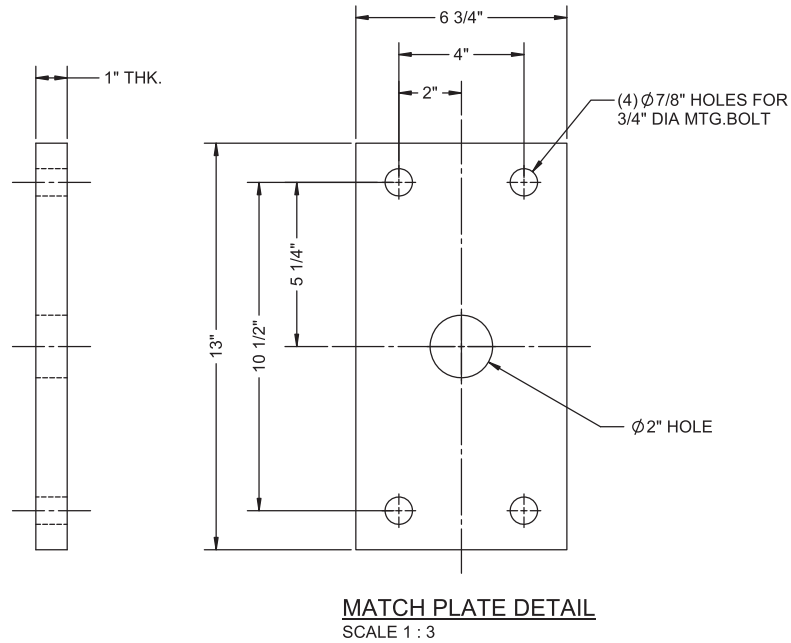
- 1. ALL PLATES TO BE ASTM A36
- 2. ALL TUBE STEEL TO BE A500 GRADE B

FINISH

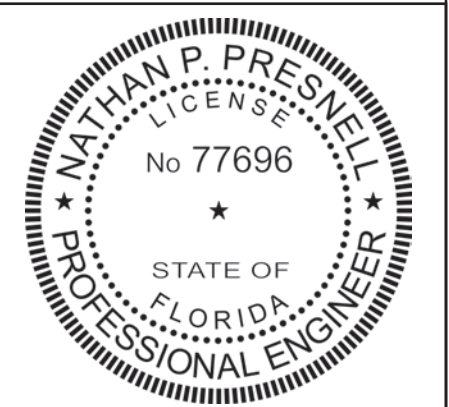
POLE FINISH PER CUSTOMER SPEC

POLE SPECIFICATION:

APPROX. POLE WEIGHT: 142 LBS
 BURIED POLE LENGTH: 7'-0"
 EXPOSED POLE LENGTH: 2'-11 1/2"
 TOTAL POLE LENGTH: 9'-11 1/2"



THIS ITEM HAS BEEN DIGITALLY SIGNED AND SEALED BY NATHAN P. PRESNELL, P.E., ON THE DATE ADJACENT TO THE SEAL.
 PRINTED COPIES OF THIS DOCUMENT ARE NOT CONSIDERED SIGNED AND SEALED AND THE SIGNATURE MUST BE VERIFIED ON ANY ELECTRONIC COPIES.



NATHAN P. PRESNELL, PE 77696
 DATE SIGNED: 2/2/2026

ENCON SERVICES, INC.
 1246 ACAPPELLA LN.
 APOLLO BEACH, FL 33572
 813-655-3373, FLEB #9394



FABRICATION DRAWING
 THESE DRAWINGS ARE THE EXCLUSIVE PROPERTY OF EVERBRITE, LLC. USE OF, OR DUPLICATION IN ANY MANNER WITHOUT EXPRESS WRITTEN PERMISSION OF EVERBRITE, LLC IS PROHIBITED.

REV	DATE	BY	CHK	DESCRIPTION
A	1/21/2026	USK	CJB	RELEASED FOR INSTALLATION

DRAWN BY	TECHNO-USK
DATE	1/19/2026
CHECKED BY	CJB
DATE	1/21/2026

SITE	Dollar General 8255 SW US Highway 27 Fort White, FL 32038-4814
SCALE	AS SHOWN
SHEET	3 OF 3

TITLE	DOLLAR GENERAL 2'-11 1/2" EXPOSED POLE FOR 5'-0 1/2" X 10'-0 1/2" SIGN @ 8'-0" OAH				
PROJECT NO.	532305	DRAWING NO.	PP532305I	BV/KT	188-XXXX
REV	A	REV	A	REV	A