

MAXIMUM WATER DEPTH 4', MAXIMUM SEAT DEPTH
28", MAX.
-FLOOR SLOPE 1:2
-STEPS: MIN. TREAD 10" X 12", 7" MIN. RISER, 12' MAX.
RISER EXCEPT THE BOTTOM STEP MAY BE 14" IF IT IS
THE SEAT. THE INVERTED STEPS AND RISERS TO
BE UNIFORM. IF THE SPA IS OPERATED
INTERMITTENTLY IT SHALL HAVE A ONE HOUR
TURNOVER, IF CONTINUOUS A SIX HOUR TURN OVER.
-MAXIMUM TEMPERATURE 140 DEGREES.
-MEET ANSI/NSFP ARTICLE XVII, SAFETY
INSTRUCTIONS/SAFETY SIGNS
-PRESSURE TEST PIPING AT 25 PSI FOR 30 MINUTES OR
MEET LOCAL CODE IF GREATER.

- DESIGN DIMENSIONS SHALL COMPLY WITH SPECIFICATIONS IN NSPI 5 AND NSPI 3 BASED ON THE PULD TYPE.
- SEE NSPI FOR DIVING WAIVE ENVELOPES.
- SLIDES SHALL MEET THE MANUFACTURER'S INSTALLATION REQUIREMENTS.
- RIGGING REQUIREMENT REQUIRED AT THE SHALLOW END AND DEEP END IF OVER FIVE FEET DEEP. ACCEPTABLE ARE STAIRS (10' MIN TREAD WITH 240 SQUARE INCH MIN. AREA, 12" MAX RISKER WITH INTERMEDIATE TREADS AND RIGGING UNIFORM), LADDERS, UNDERWATER SEATS, AND SWIM DOGS (MAX. 20" BELOW WATER).
- CIRCULATION SYSTEMS, COMPONENTS AND EQUIPMENT SHALL COMPLY WITH NSF 50.
- THE MAXIMUM TURNED OVER IS 180 DEGREES.
- FILTERS SHALL HAVE AN AIR RELEASE AND PRESSURE GAGE.
- PUMPS SHALL BE CORROSION RESISTANT AND LESS SHALL MEET ANSI/UL1081 CORROSION RESISTANT WITH STRAINER AND MEET THE REQUIRED FLOW.
- SURFACE SKIMMERS SHALL MEET NSF 50 AND THERE SHALL BE ONE FOR EVERY 800 SQUARE FEET OF SURFACE AREA.
- RETURN INLETS SHALL BE A MINIMUM OF ONE FOR EVERY 600 SQUARE FEET.
- HEATER SHALL MEET ANSI-Z21.56, UL 1261 OR UL559.
- DISINFECTANT EQUIPMENT SHALL COMPLY WITH NSF 50.
- PRESSURE TEST PIPES ARE 15 PSI FOR 30 MINUTES OR MEET LOCAL CODE IF GREATER.

- WIRING AND BONDING AND ALL ELECTRICAL TO NEC ART. 680 D LOCAL CODE.
- NOTES FROM 680.26:
- 1. THE FOLLOWING ITEMS SHALL BE CONNECTED TO AN EQUIPOTENTIAL BONDING GRID WITH A SOLID COPPER CONDUCTOR NOT SMALLER THAN 8 AWG.
- 1. METALL STRUCTURAL COMPONENTS, INCLUDING REINFORCING STEEL.
- 2. UNDERWATER LIGHTING
- 3. METALLIC EQUIPMENT THAT PENETRATE THE POOL THAT ARE EITHER OVER 4" IN ANY DIMENSION OR THAT PENETRATE INTO THE POOL SHELL MORE THAN 1".
- 4. ELECTRICAL EQUIPMENT ASSOCIATED WITH THE POOL WATER CIRCULATING SYSTEM.
- 5. METAL WIRING AND EQUIPMENT THAT ARE WITHIN THE VERTICAL OR HORIZONTAL PLANE OF THE POOL'S HIGHEST WATER LEVEL OF THE POOL.

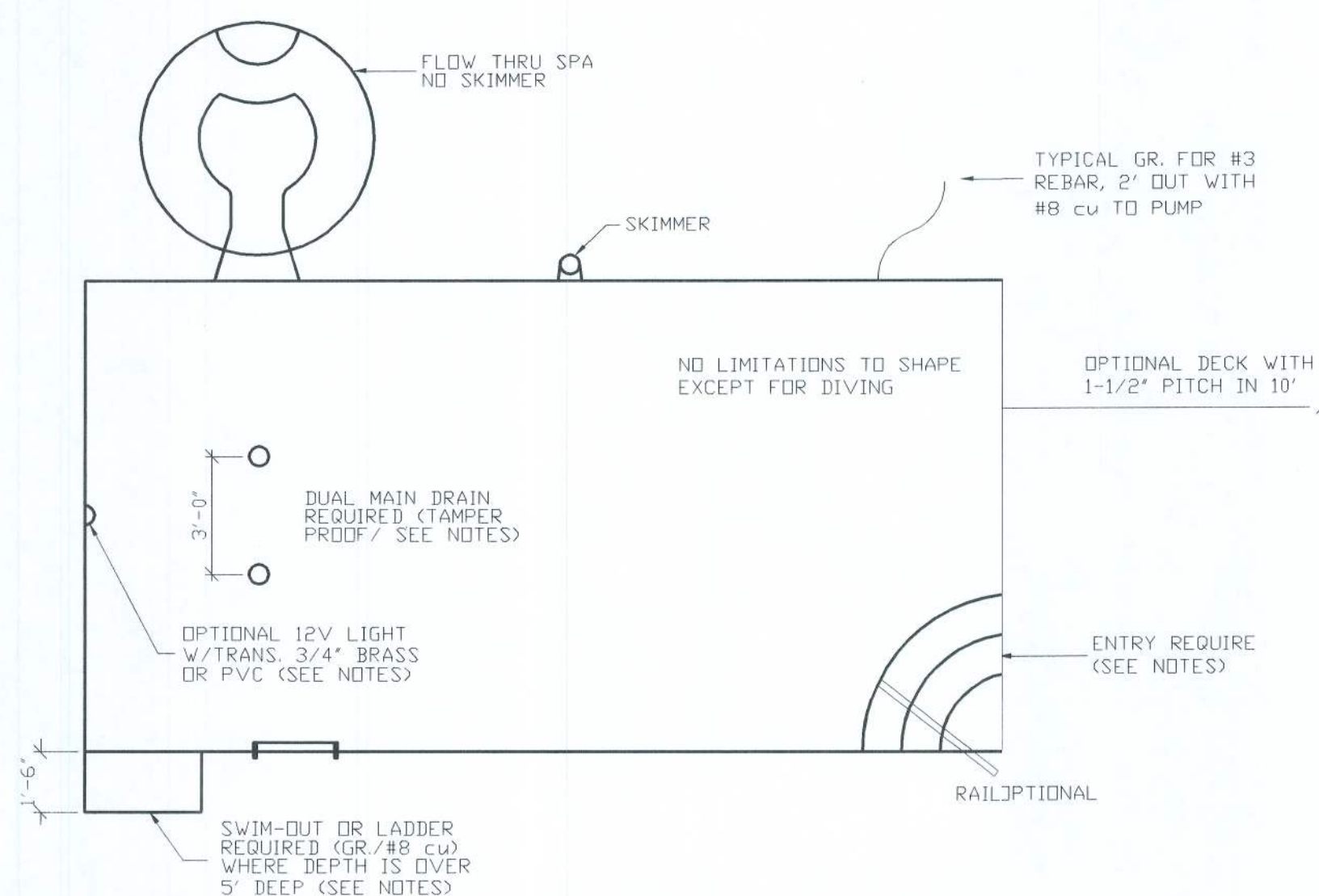
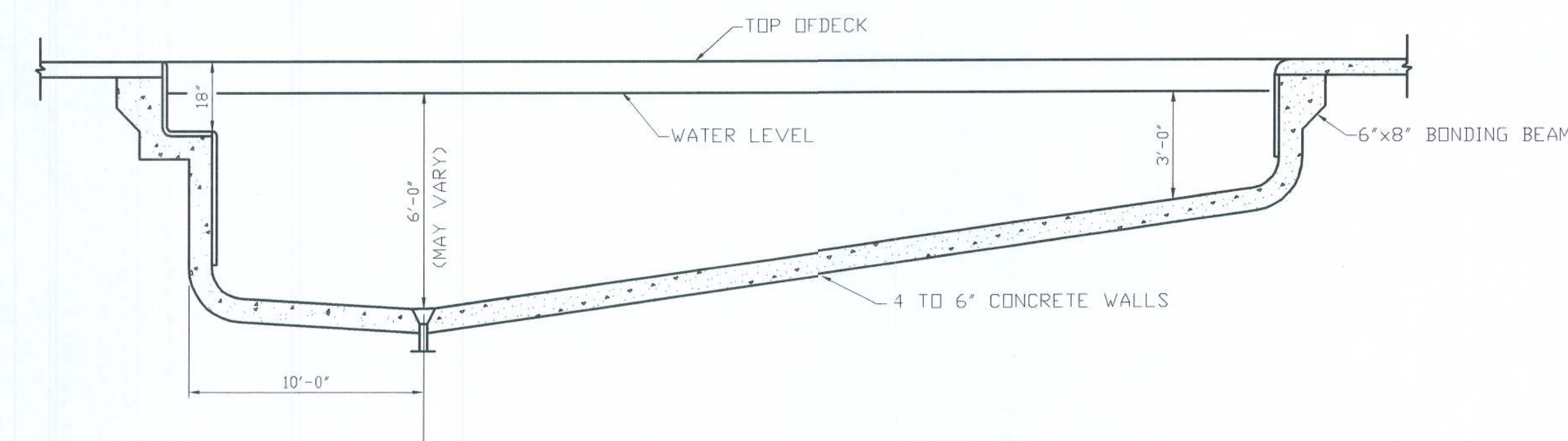
THE POOL CONTRACTOR IS RESPONSIBLE FOR FURNISHING ALL DETAIL DESIGN REQUIREMENTS FOR EACH INDIVIDUAL POOL IN ACCORDANCE WITH THE FLORIDA BUILDING CODE, AND ALL CONSTRUCTION SHALL BE IN ACCORDANCE WITH THE FLORIDA BUILDING CODE, AND ALL AVAILABLE CODES INCLUDING PLUMBING, ELECTRICAL, AND GAS. PIPING SHALL BE SCH. 40 PBC, NSF6W, MAX. PRESSURE VELOCITY 10 FPS, SUCTION 6 FPS. THE POOL CONTRACTOR SHALL PROVIDE PLUMBING AS PER THE SAMPLE WITH THE INFORMATION REQUIRED SHOWN. MAIN DRAIN PLUMBING SHALL BE TWO DRAINS SEPARATED BY 3' WITH APPROVED ANTI-SIPHON DEVICES. AS AN ALTERNATE, THE APPROVED DRAINS MAY BE PLACED ON DIFFERENT PLANES. THE TWO DRAINS SHALL HAVE A COMMON SUCTION LINE. THE SUCTION LINE MAY BE USED IF APPROVED AT A MAXIMUM OF 1 1/2 FPS AND THE SUCTION PIPING IS RECESSED FROM THE GRATE. THE DISTANCE EQUAL TO THE SUCTION PIPE SIZE. THE SUCTION LINE SHALL BE PROTECTED BY A SYSTEM MUST BE INSTALLED. THIS MAY CONSIST OF AN AIR RELEASE SYSTEM. THE VENT PIPE SHALL BE TIED TO THE MAIN DRAIN LINES, SIZED THE SAME AS THE MAIN DRAIN LINE. THE VENT PIPE SHALL GO TO THE FILTER LOCATION, ELBOWED UP AND OVER WITH A GRATE FOR PROTECTION AND LABELED "SAFETY VENT". SKIMMERS DO NOT REQUIRE PROTECTION AND MAY BE DESIGNED FOR 30 GPM SUCTION. THE FOLLOWING SHALL BE LABELED WITH RED LABEL MARKER TAPE AT THE FILTER LOCATION: PIPES, PIPES, SAFETY, OR "SAFETY DEVICE", PUMPS) OFF SWITCH.

IT HAS BEEN CERTIFIED THAT THESE DESIGN REQUIREMENTS ARE IN COMPLIANCE WITH THE 2004 FLORIDA BUILDING CODE, ANSI/NSP1-3 1992, STANDARD FOR PERMANENTLY INSTALLED SPAS AND HOT TUBS-1992, AND THE FLORIDA BUILDING CODE FOR RESIDENTIAL IN-GROUND SWIMMING POOLS.

1. ALL WORK TO BE DONE CONFORMING TO THE 2004 FLORIDA BUILDING CODES.
2. MINIMUM DESIGN SOIL BEARING CAPACITY TO BE 2000 PSF. SOIL CAPACITY TO BE VERIFIED BY CONTRACTOR PRIOR TO CONSTRUCTION.
3. EXPOSED SOIL TO BE EXCAVATED TO EXPOSE CLEAN SOIL. VEGETATION AND DELETERIOUS MATTER, CONCRETE SHALL BE PLACED ON AN UNDISTURBED BASE.
4. IT IS THE CONTRACTOR'S SOLE RESPONSIBILITY TO DETERMINE ERECTION PROCEDURE AND SEQUENCE TO INSURE THE SAFETY OF THE BUILDING AND ITS COMPONENT PARTS. THIS INCLUDES, BUT IS NOT LIMITED TO, THE ADDITION OF WHATEVER TEMPORARY BRACING, GUYS, OR TOWNS THAT MAY BE NECESSARY. SUCH MATERIAL SHALL BE REMOVED AND SHALL REMAIN THE PROPERTY OF THE CONTRACTOR AFTER COMPLETION OF THE PROJECT.
5. ALL DIMENSIONS AND ELEVATIONS SHOWN ON THE STRUCTURAL DRAWINGS SHALL BE VERIFIED AND SHALL CONFORM TO THE ARCHITECTURAL DRAWINGS.
6. CONCRETE :
 - MINIMUM COMPRESSIVE CONCRETE STRENGTH TO BE 3000 PSI IN 28 DAYS. ALL CONCRETE SHALL BE "READY MIXED" AND IN ACCORDANCE WITH A.S.T.M. SPECIFICATION C-84. ALL CONCRETE MODULAR UNITS SHALL HAVE A COMPRESSIVE STRENGTH OF 1900 PSI WITH TYPE M OR S MORTAR, 2000 PSI).
7. SLAB ON FILL :
 - INTERIOR CONCRETE SLABS POURED ON FILL TO BE POURED OVER WATERPROOF MEMBRANES. ALL SLABS TO BE REINFORCED WITH 6X6 10/10 WELDED WIRE MESH.
8. ALL STEEL SHALL BE 40 KSI WITH A MINIMUM CLEAR COVER OF 3" AGAINST SOIL, AND SHALL HAVE A MINIMUM LAP OF 40 TIMES THE DIAMETER OF THE REBAR.
9. BASIC LOADING FOR FACTORED LOADING:

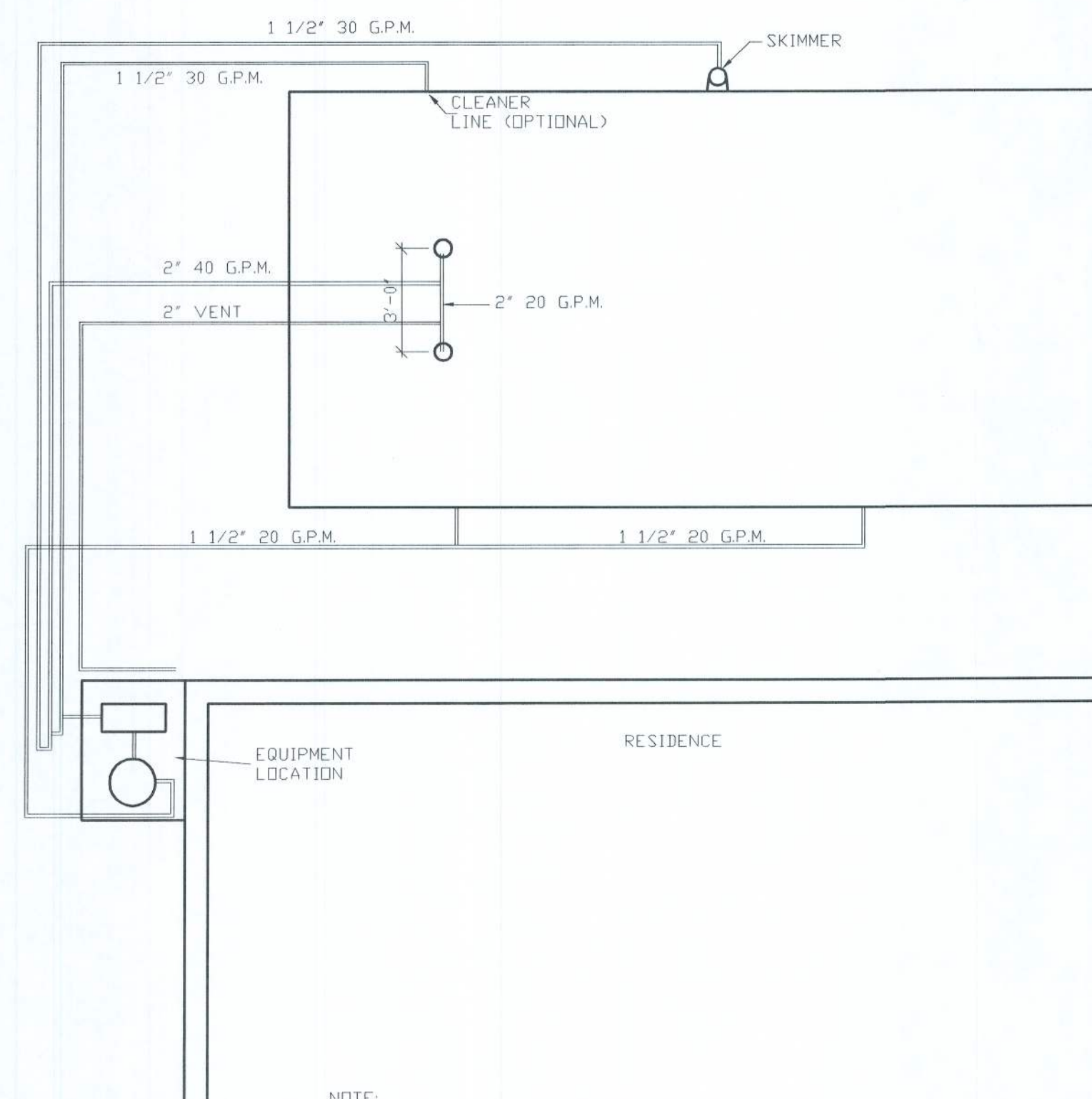
DATE
01/15/07
SCALE
AS SHOWN
JOB 10.

1
OF 1 SHEET



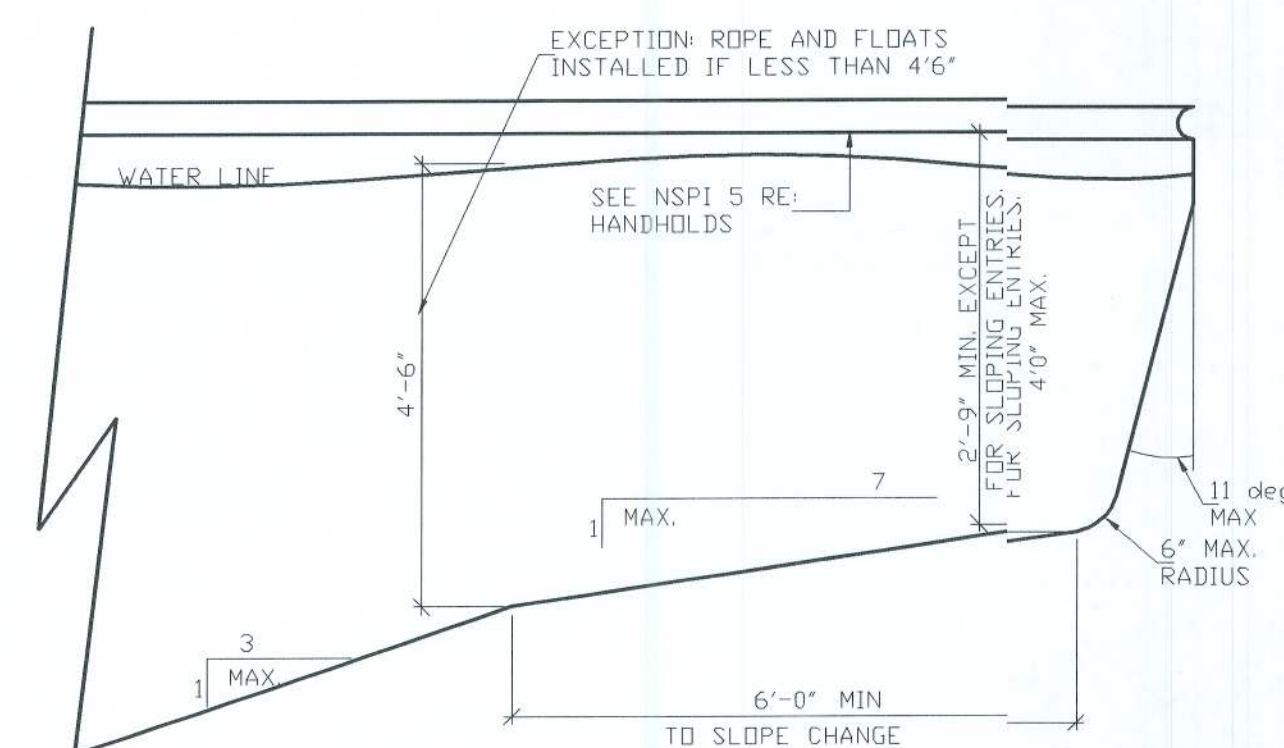
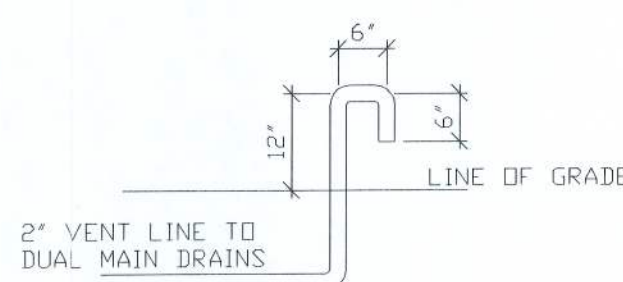
GENERAL POOL PLAN
SCALE: 1/4" = 1'-0"

PIPE	SUCTION	PRESSURE
1 1/2"	35 GPM	60 GPM
2"	60	100
2 1/2"	85	145
3"	135	225
4"	235	375

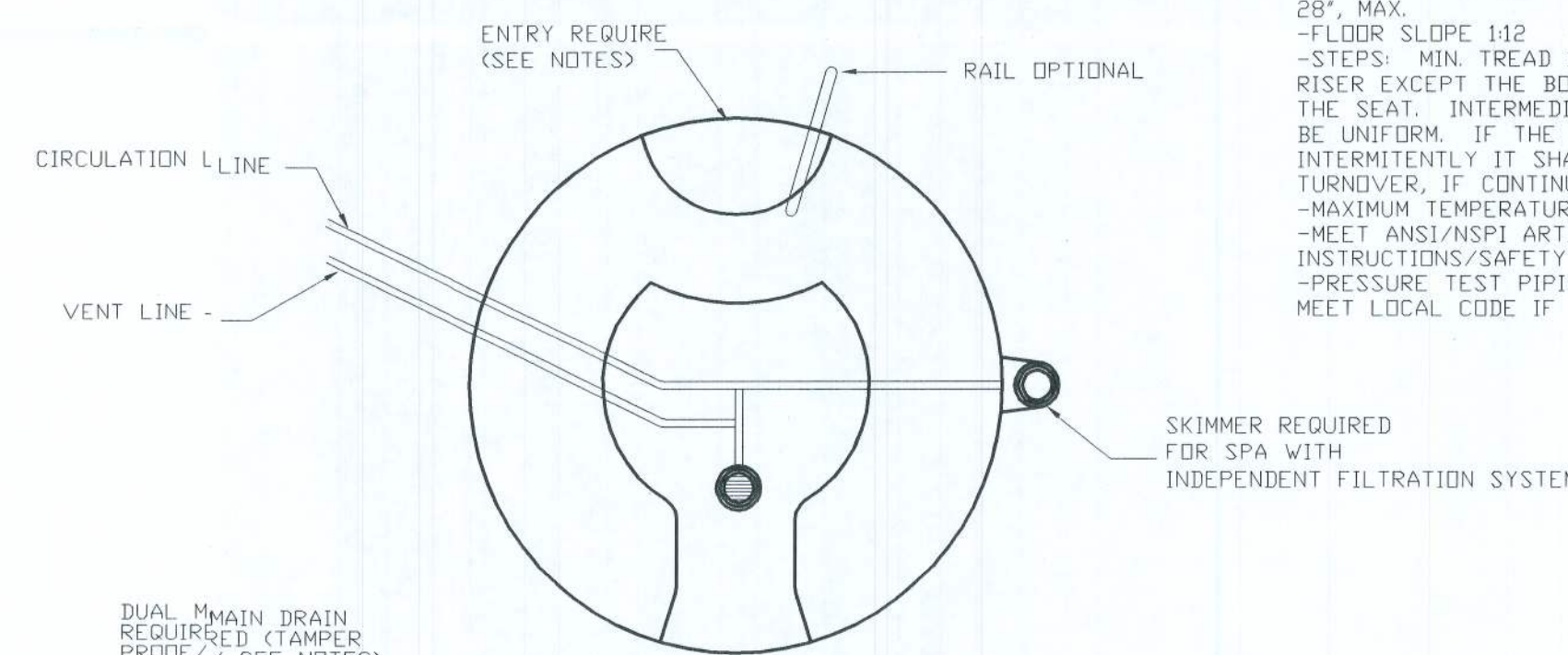


NOTE:
THE VENT LINE SHALL BE TIED TO THE 2" LINE THAT
TIES THE DRAINS TOGETHER, THE SUCTION LINE SHALL
BE TIED THE SAME WAY AS SHOWN IN THE DIAGRAM.
THE VENT SHALL BE AT LEAST 18' LONG AND NO MORE
THAN 30' LONG. THIS SYSTEM WILL REACT WITHIN THE
'3" SECOND TIME FRAME

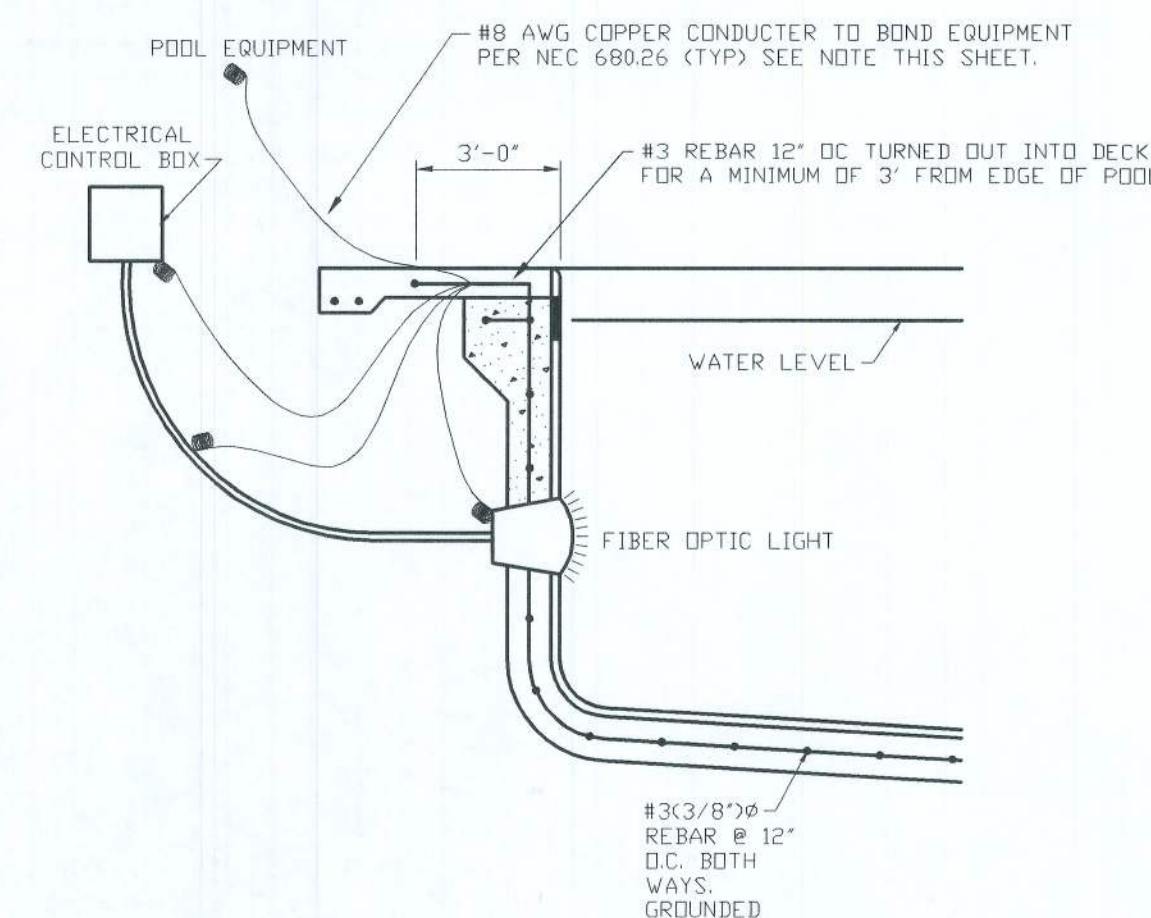
VENT DETAIL
SCALE: 1/2" = 1' - 0"



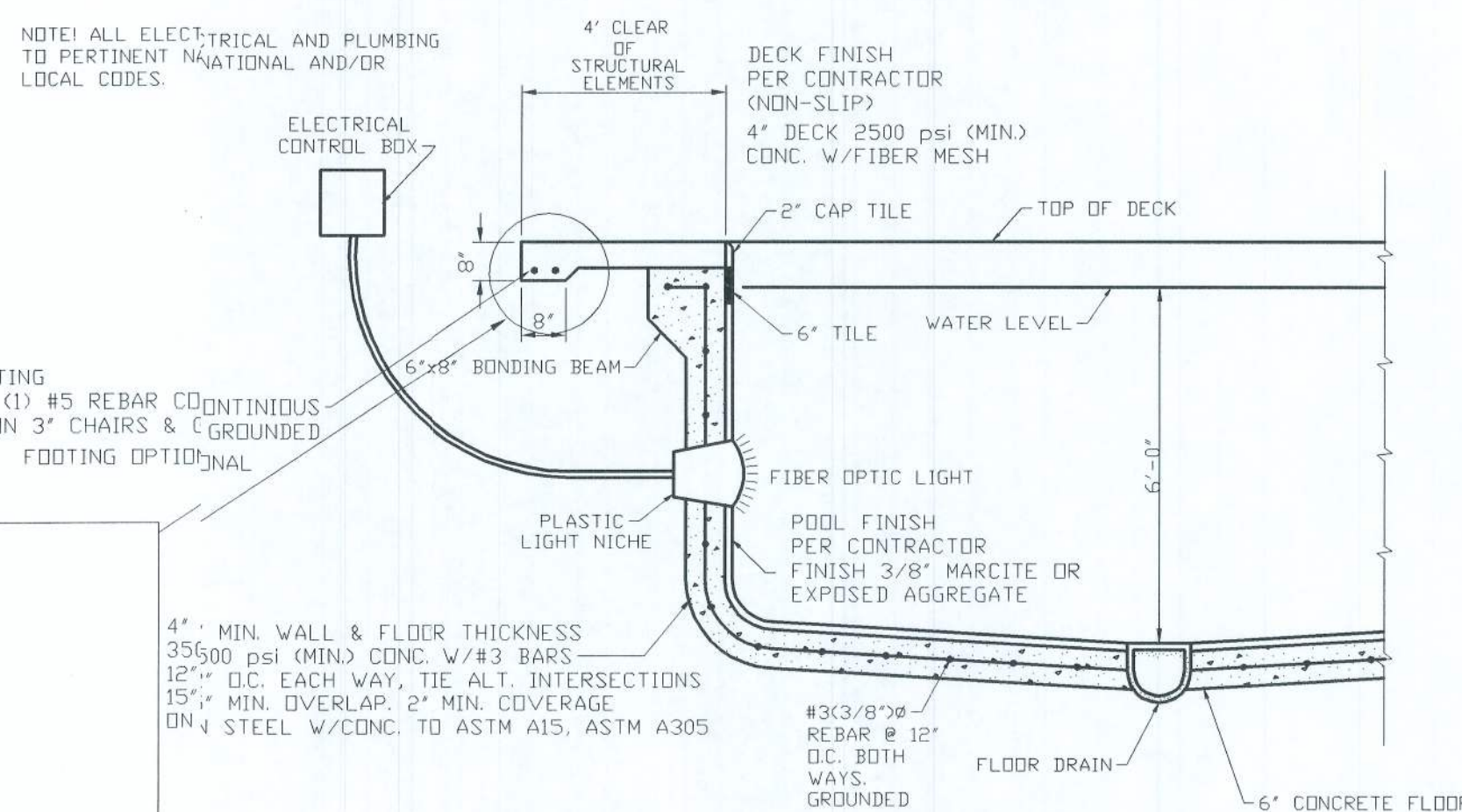
POOL SECTION DETAIL
SCALE: 1/2" = 1'-0"



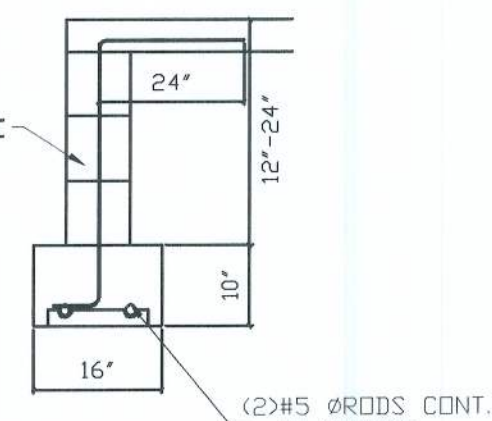
GENERAL SPA PLAN
SCALE: 1/2" = 1' - 0"



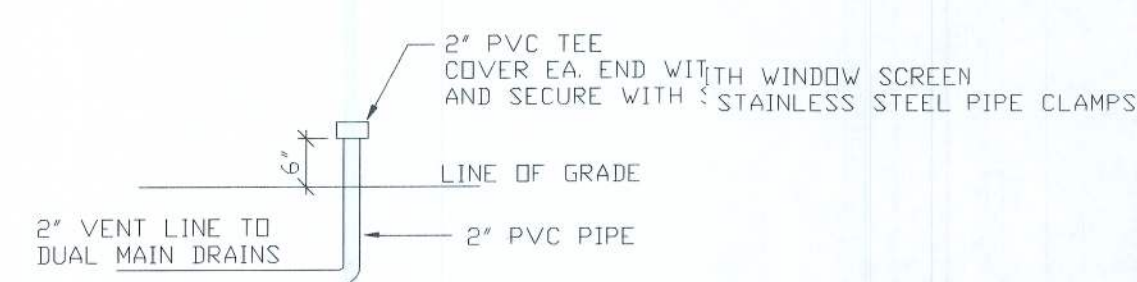
ELECTRICAL REQUIREMENTS
SCALE: 1/2" = 1' - 0"



TYPICAL FLOOR AND WALL SECTION
SCALE: N.T.S.



OPTIONAL STEM WALL FOOTING
SCALE: N.T.S.



OPT. VENT DETAIL
SCALE: 1/2" = 1'-0"