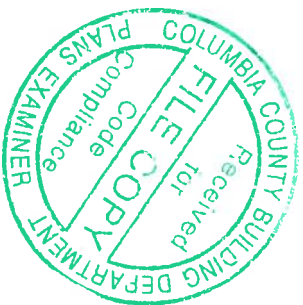
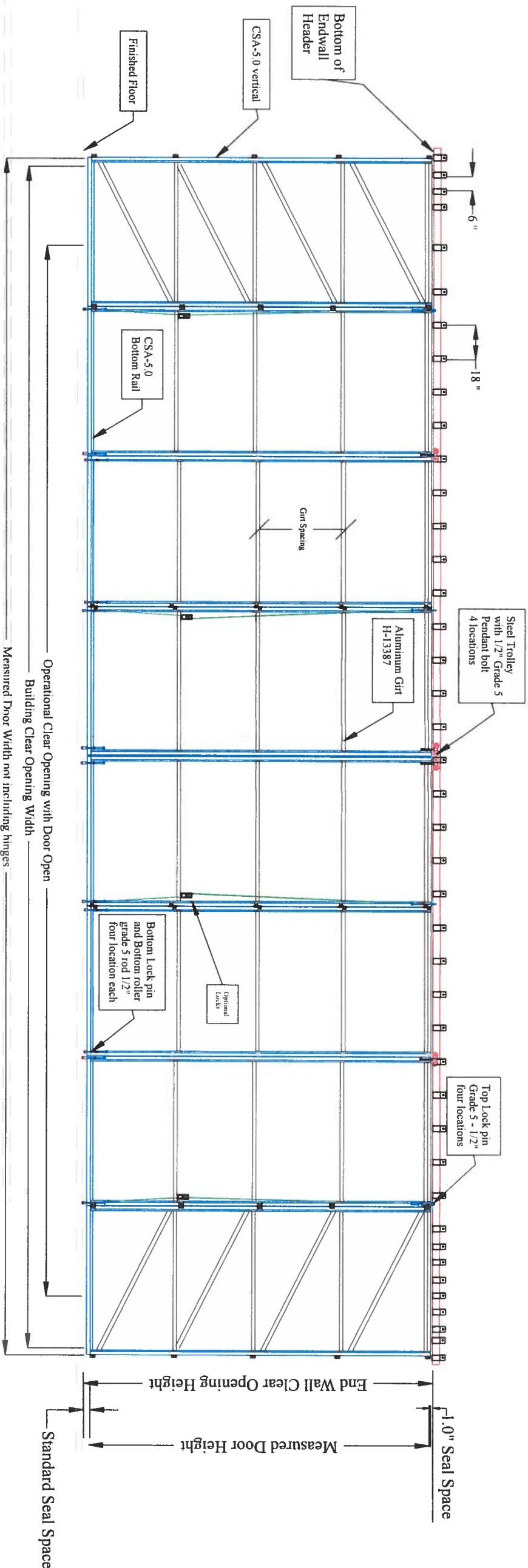


NOT TO SCALE



Feet		Inches	Specifications for Print Dimensions		10/21/2019
42	0	0	Building Framed Opening Width	Door Series	CSA-5.0 Plus
12	0	0	Framed Opening Height	Total Panels	8
5	2.20	2.20	Outboard Hinged Panel	Panel Qty	2
5	2.70	2.70	Standard Sliding Panel Width	Panel Qty	4
5	6.699	6.699	Center Panels	Panel Qty	2
3	5.72	5.72	Fold Tite Stack Dimension		
42	5.09	5.09	Measured Door Width with 2.75" Lap and 1/2" between center panels		
42	10.89	10.89	Overall Width required for door operation		
39	5.17	5.17	Operational Clear Opening with Door Open (overall width minus stack)		
	1.5	1.5	Seal Space Under Door		
	6	6	Space required for Door Installation on Front face of Header		
11	9.51	9.51	Measured Door Height		
11	7.5	7.5	Sheeting Height (For Covering Supplied By Others) Confirm at Site		
11	7.5	7.5	Actual Length of Vertical as shipped		
2	8.69	8.69	Horizontal Girt Spacing between girts	Girt Qty	4

Rollers for recessed guide supplied, channel in concrete required

ENGINEERING
William F. Stuhke, PhD, P.E.
State of Florida PE # 22150
12215 Rebeccas Run Dr.
Winter Garden, FL 34787
(407) 920-3119

Approved as Is

Date

Approved with Changes Noted:

Date

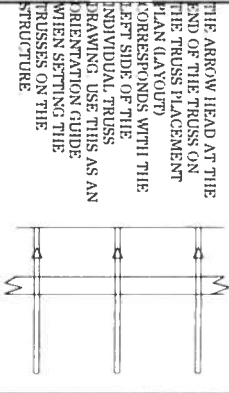
Fold Tite Sys, Inc.

Actual System
8 Panel 4 Girt
Plus Bottom Rail

Fold-Tite
Stacker System
Bruce Hart Homes LLC
126 SW Colonial Place
Lake City, FL 32025

Door System
CSA-5.0 Plus

HAR FT4212Q
T102119



THE ARROW HEAD AT THE
END OF THE TRUSS ON
THE TRUSS PLACEMENT
PLAN (LAYOUT)
CORRESPONDS WITH THE
LEFT SIDE OF THE
INDIVIDUAL TRUSS
DRAWING. USE THIS AS AN
ORIENTATION GUIDE
WHEN SETTING THE
TRUSSES ON THE
STRUCTURE

General Notes:

- Per ANSI/TPI 1-2002 all "Truss to Wall" connections are the responsibility of the Building Designer, not the Truss Manufacturer.
- Use Manufacturer's specifications for all hanger connections unless noted otherwise.
- Trusses are to be 24" o.c. U.N.O.
- All hangers are to be Simpson or equivalent U.N.O.
- Use 10d x 1 1/2" Nails in hanger connections to single ply truss trusses.
- Trusses are not designed to support brick U.N.O.
- Dimensions are Feet/Inches Sixteenths

Notes:

No back changes will be accepted by Builders FirstSource unless approved in writing first.
880.855.4641

ACQ lumber is curries to truss plates. Any ACQ lumber that comes in contact with truss plates (i.e. sealed on tabs) must have an approved barrier applied first.

Refer to BCSI-B1 Summary Sheet, Guide for handling, Installing and Bracing of Metal Plate Connected Wood Truss prior to and during truss installation.

It is the responsibility of the Contractor to ensure of the proper orientation of the truss placement plans as to the construction documents and field conditions of the structure orientation. If a reversed or flipped layout is required, it will be supplied at no extra cost by Builders FirstSource.

It is the responsibility of the Contractor to make sure the placement of trusses are adjusted for plumbing drops can lights, ect.... so the trusses do not interfere with these type of items.

All common framed roof or floor systems must be designed as to NOT impose any loads on the floor trusses below. The floor trusses have not been designed to carry any additional loads from above.

This truss placement plan was not created by an engineer, but rather by the Builders FirstSource staff and is solely to be used as an installation guide and does not require a seal. Complete truss engineering and analysis can be found on the truss design drawings which will be sealed by the truss design engineer.

Cable end trusses require continuous bottom chord bearing. Refer to local codes for wall framing requirements.

Although all attempts have been made to do so trusses may not be designed symmetrically. Please refer to the individual truss drawings and truss placement plans for proper orientation and placement.



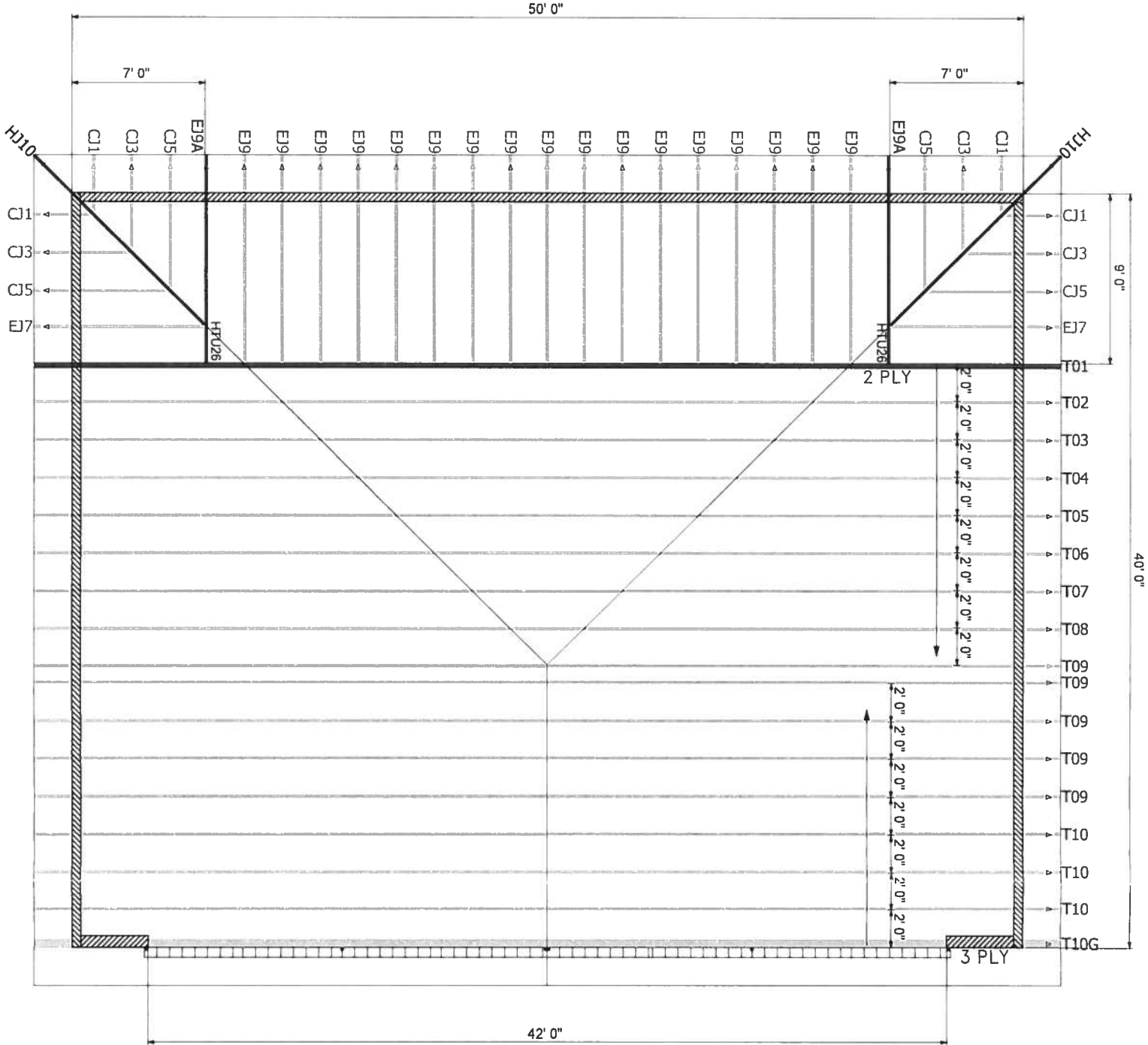
Lake City
PHONE: 386-755-6894
FAX: 386-755-7973

Jacksonville
PHONE: 904-772-6100
FAX: 904-772-1973

Tallahassee
PHONE: 850-576-5177

Builder:
Bruce Hart O/B
Local Address:
126 SW Colonial Place

Model: Hanger		
Date	Drawn By	Original Ref #
10-21-19	BPC	1519148
Floor 1 Job#	Floor 2 Job#	Roof Job #
-	-	2140857



5/12 PITCH
24" OVERHANG
ROOF AREA 2574 SQFT
HATCH WALLS 12' PLATE
INDICATED BY



Truss Connector Total List		
Manuf	Product	Qty
Simpson	HTU26	2