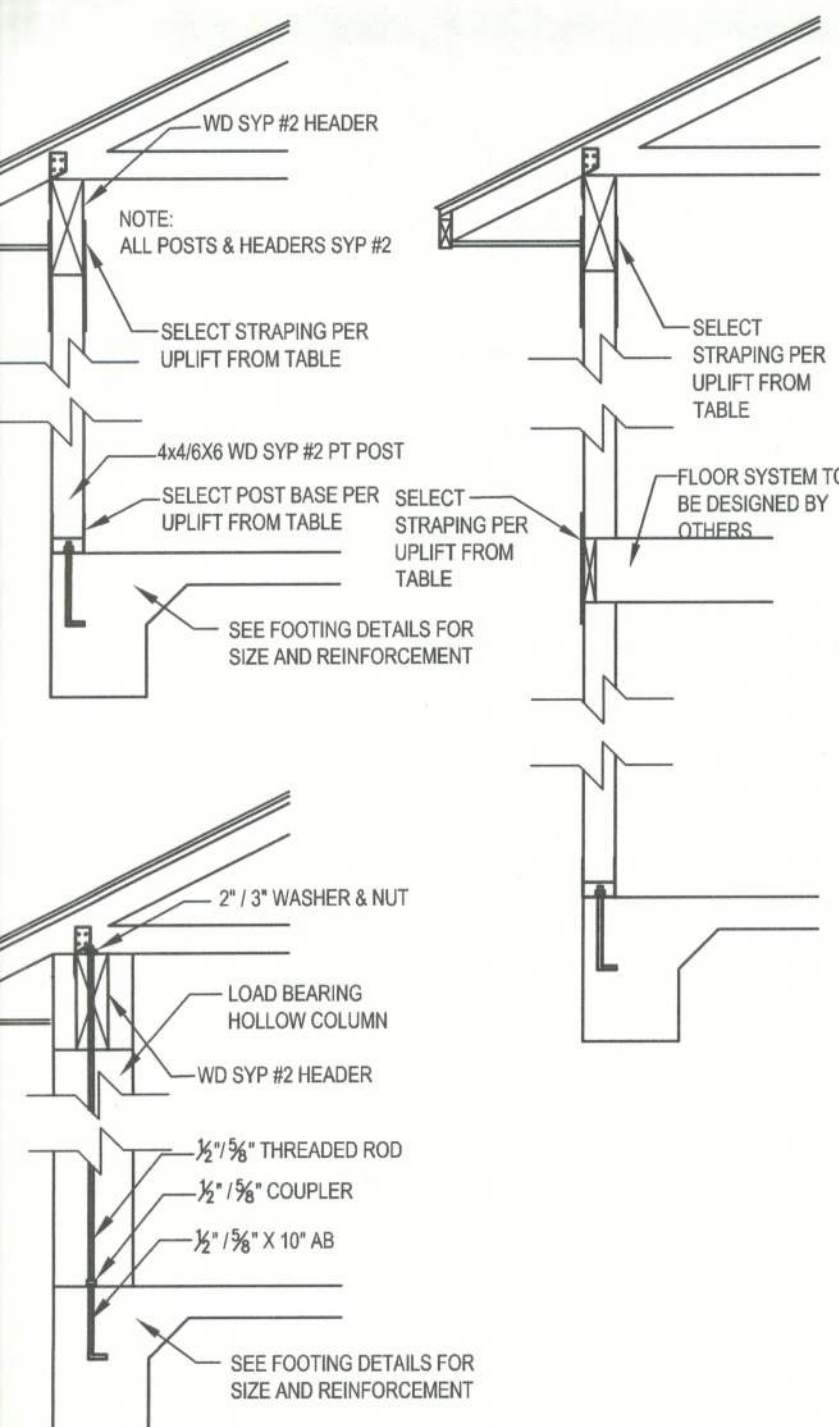


TYPICAL TRUSS UPLIFT & MAX 12" WALL HEIGHT	ANCHOR BOLT SPACING	SP4 / SP5 SPACING	ALTERNATE SPACING
770 LB	48" O.C.	48" O.C.	N/A
960 LB	48" O.C.	32" O.C.	N/A
1270 LB	32" O.C.	16" O.C.	32" O.C.
1580 LB	32" O.C.	16" O.C.	16" O.C.
2200 LB	LTT11 W/ 5/8" X 7" WEDGE ANCHOR	N/A	(2) HTS20 NAILED TO STUD PACK

NOTE: SP2 TOP & SP1 BOTTOM ALTERNATE FOR SP4/5  
NOTE: MINIMUM ANCHOR BOLT SPACING FOR WALLS WITH A HEIGHT GREATER THAN 10'-0" AND LESS THAN 14'-0" SHALL BE 32" O.C.

W1 - SINGLE STORY EXT. WALL SECTION  
SCALE: 1/2"=1'-0" REV-22-AUG-03



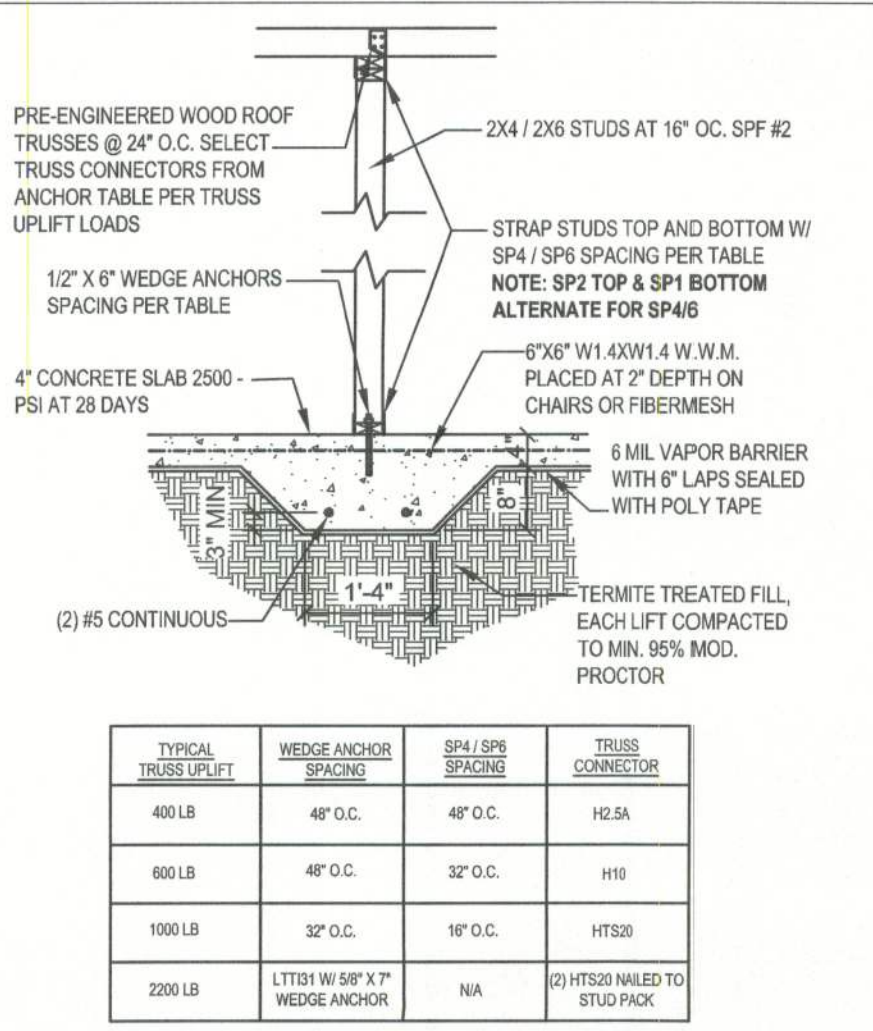
TYPICAL POST UPLIFT	POST BASE ANCHOR	BETWEEN FLOOR STRAPPING	HEADER STRAPPING
555 LB	AB44 W/ (8)-10/8" 8" W	(2) LST42 W/ (8)-15/16 EA.	(2) LST42 W/ (8)-15/16 EA.
720 LB	AB46 W/ (8)-16/8" 8" W	(2) LST42 W/ (8)-15/16 EA.	(2) LST42 W/ (8)-15/16 EA.
2200 LB	AB44 W/ (12)-16/8" (2) 5/8" BOLTS & 3/4" W	(2) LST42 W/ (16)-10/8 EA.	(2) LST42 W/ (16)-10/8 EA.
2300 LB	AB46 W/ (12)-16/8" (2) 5/8" BOLTS & 3/4" W	(2) LST42 W/ (16)-10/8 EA.	(2) LST42 W/ (16)-10/8 EA.

HOLLOW COLUMN

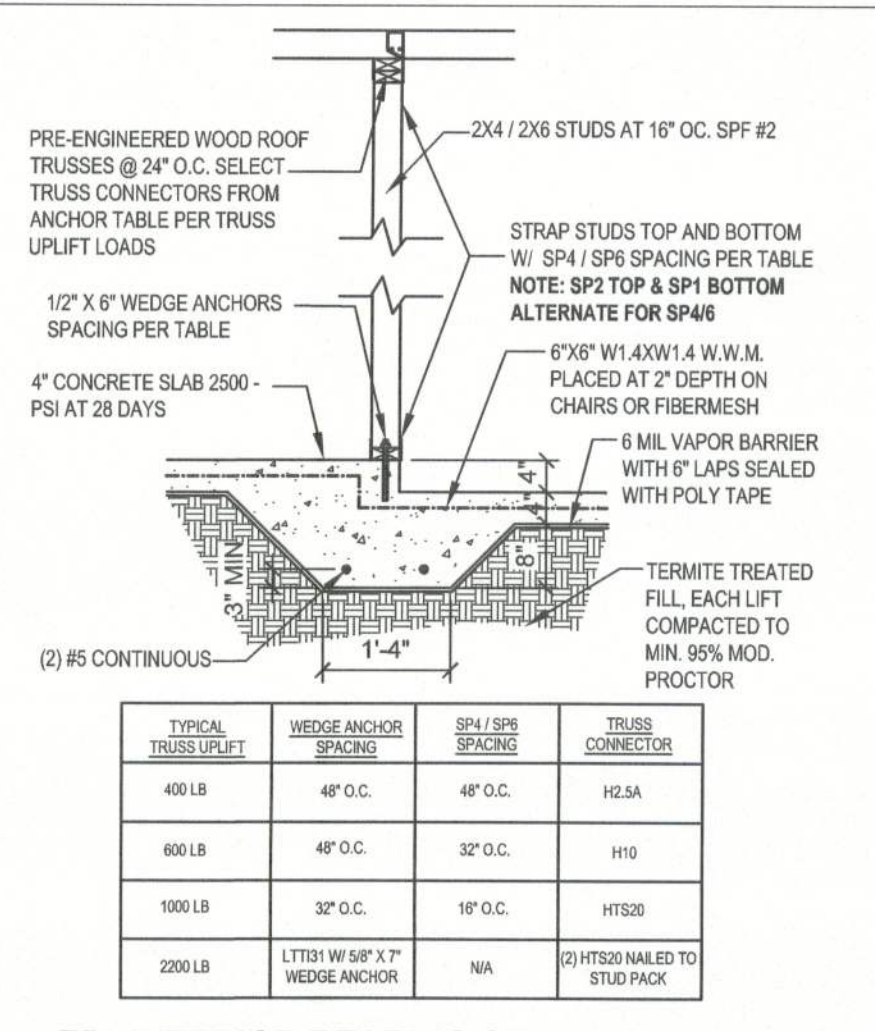
1/2" X 10" AB ATTACHED TO 1/2" THREADED ROD WITH 1/2" COUPLER THRU COLUMN & HEADER WITH 1/2" WASHER & NUT TOP

1/2" X 10" AB ATTACHED TO 1/2" THREADED ROD WITH 1/2" COUPLER THRU COLUMN & HEADER WITH 1/2" WASHER & NUT TOP

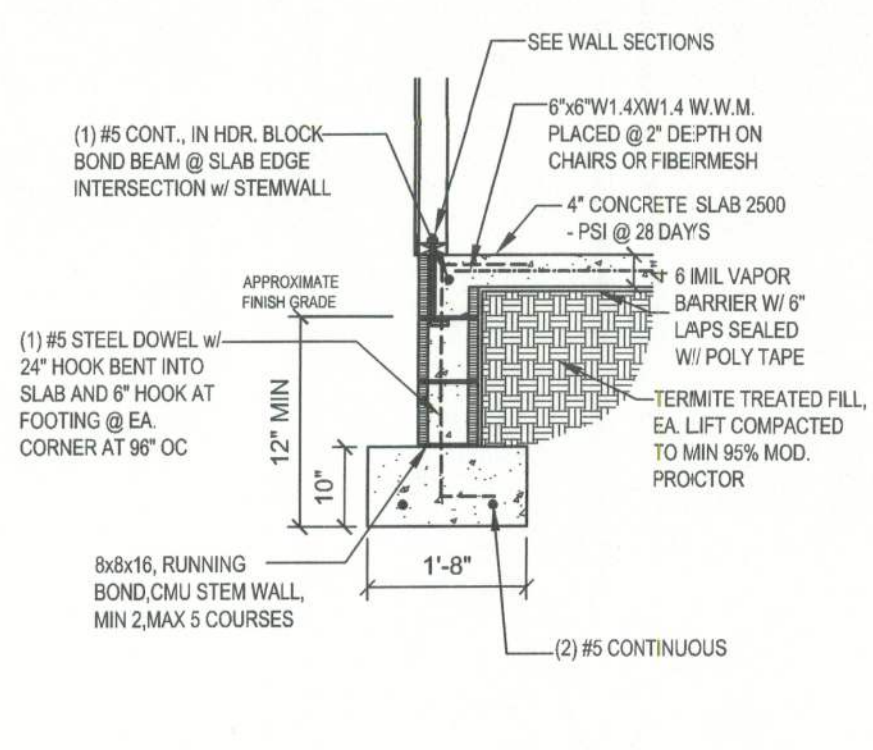
W12 - PORCH HEADER ANCHORS  
SCALE: N.T.S. REV-18-JUL-03



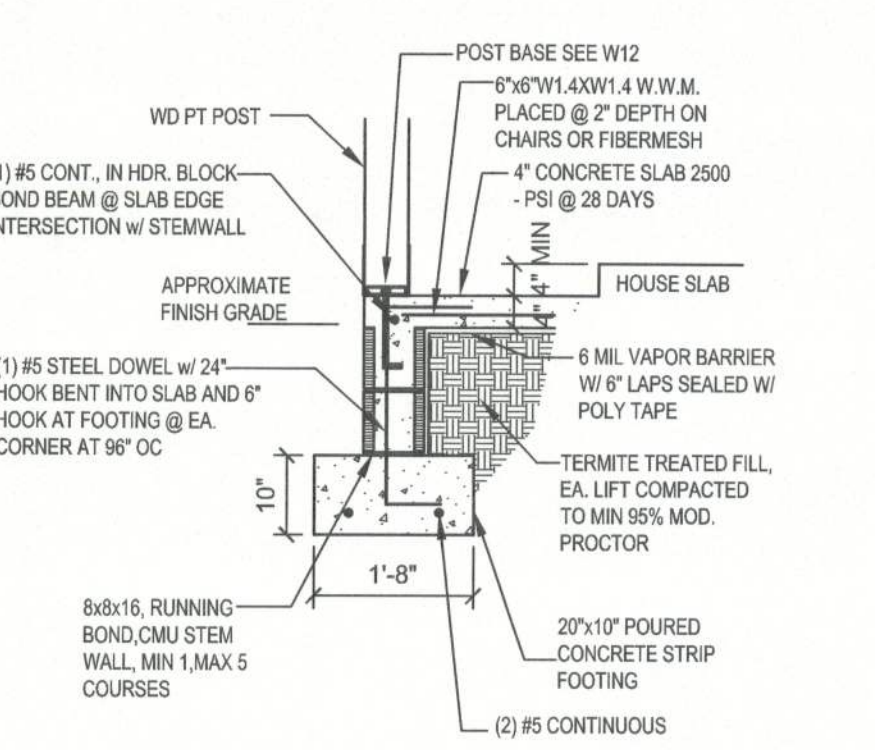
F4 - INTERIOR BEARING FOOTING  
SCALE: 1/2"=1'-0" REV-22-AUG-03



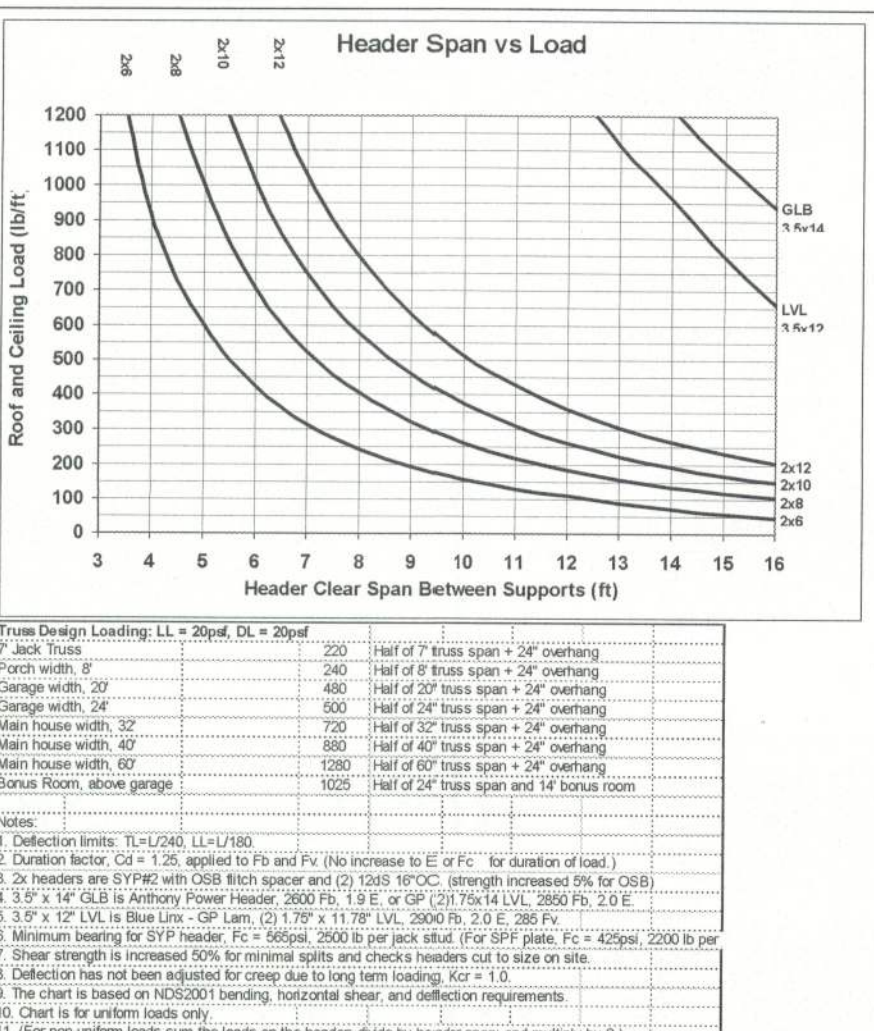
F5 - INTERIOR BEARING STEP FOOTING  
SCALE: 1/2"=1'-0" REV-22-AUG-03



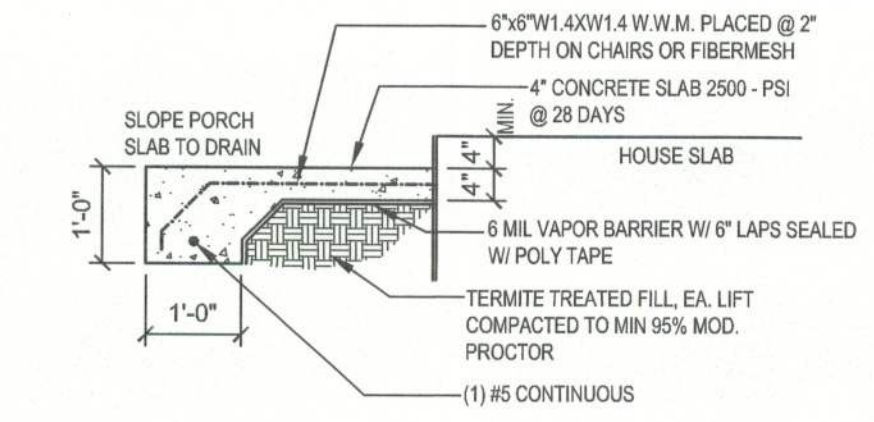
F1 - STEM WALL FOUNDATION  
SCALE: 1/2"=1'-0" REV-27-MAY-03



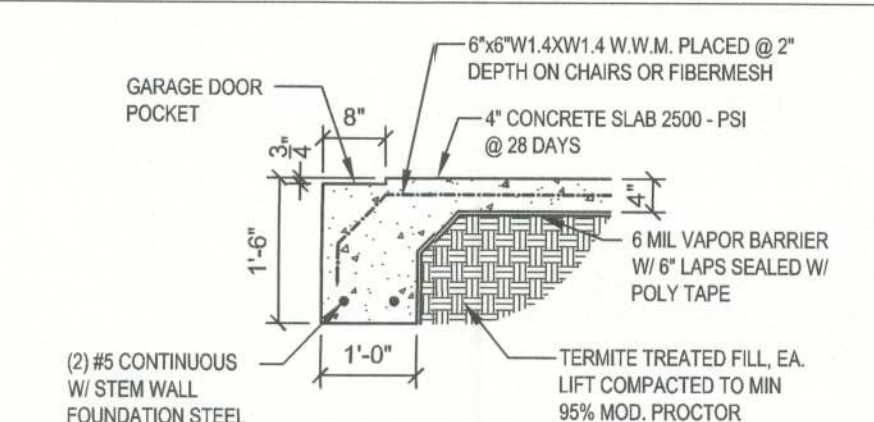
F10 - STEM WALL PORCH FOOTING  
SCALE: 1/2"=1'-0" REV-16-MAY-03



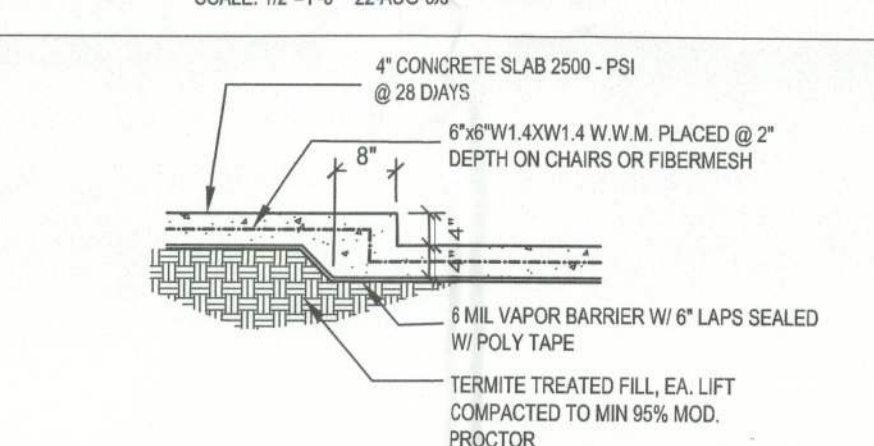
W71 - HEADER SPANS FOR ROOF/CEILING LOAD  
SCALE: N.T.S. REV-22-AUG-03



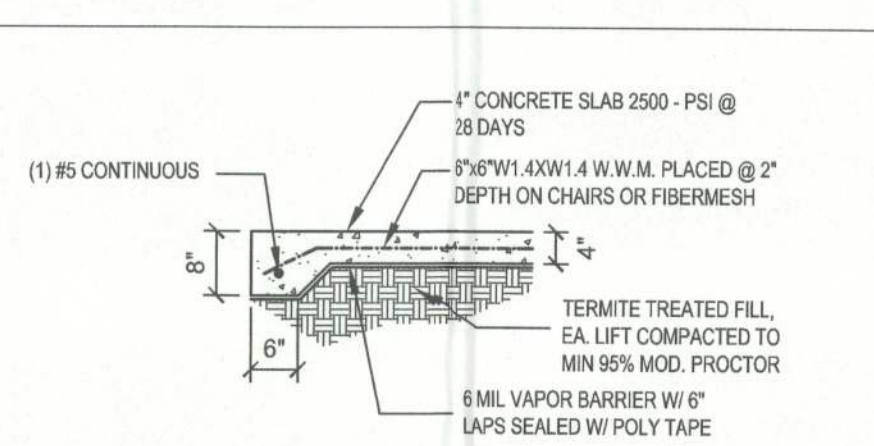
F2 - PORCH SLAB  
SCALE: 1/2"=1'-0" REV-22-AUG-03



F3 - GARAGE DOOR POCKET  
SCALE: 1/2"=1'-0" REV-22-AUG-03



F12 - NON-BEARING STEP FOOTING  
SCALE: 1/2"=1'-0" REV-08-JAN-05



F13 - NON-BEARING THICKENED SLAB EDGE  
SCALE: 1/2"=1'-0" REV-10-FEB-03

REV-18-NOV-04					
Uplift SPF	Uplift SYP	Truss Connector	To Plate	To Truss / Rafter	
320	455	H3	4-8d	4-8d	
245	350	H5A	3-8d	3-8d	
535	600	H2 SA	5-8d	5-8d	
620	720	H10	6-10d x 1 1/2"	6-10d x 1 1/2"	
850	990	LTS12	8-8d x 1 1/2"	8-8d x 1 1/2"	
1245	1450	LTS20	10-10d x 1 1/2"	10-10d x 1 1/2"	
1285	1470	H16-H2	10-10d x 1 1/2"	2-10d x 1 1/2"	
1785	2050	LG2	14-10d Sink	16-16d Sink	
3655	4200	MG1	3/4" Thrd. Rod	22-10d	
SPF	SYP	Strap Connector	To One Member	To Other Member	
760	885	SP4	6-10d x 1/2"	N/A	
865	1005	CS20	9-8d or 10d	9-8d or 7-10d	
1085	1285	LSTA18-24	7-10d	7-10d	
1170	1380	SPH4	12-10d x 1 1/2"	N/A	
420	455	SSP	4-10d	3-10d to double plate or 1-10d to single	
600	825	DSP	8-10d	6-10d to double plate or 2-10d to single	
1420	1650	CS18	14-8d or 11-10d	14-8d or 11-10d	
SPF	SYP	Column Anchor	To Foundation	To Column / Truss	
1160	1350	LTT19	3/4" x 16" AB	8-16d Sinkers	
1985	2310	LTT31	3/4" x 16" AB	18-10d x 1 1/2"	
2385	2775	H2A	3/4" x 16" AB	2 3/4" Bolts	
3590	4175	HTT18	3/4" x 16" AB	12-16d	
1975	2300	ABU66	3/4" x 16" AB	12-16d	

Shade Supporting Trusses: The builder is responsible for gravity loads, but you should put on webs 2x4 stud under truss bearing location for each 3000 lb reaction. Check the minimum bearing requirements of the truss and by plan (SPF, For 42500-220000).

Manufacturer and product fasteners are listed for example only. Manufacturer's fastener schedule or other information may be substituted for any fasteners listed in the example tables as long as it meets the required load capacities. Manufacturer's installation instructions must be followed to achieve rated loads. All connections exposed directly to the weather shall be hot dipped galvanized after fabrication. Loads are increased for wind duration. Shear uplift may be reduced proportionally to number of nails. See spec sheet for alternate nail sizes (10d=8d/16d, 10d=10d/16d, 10d=12d/16d, 10d=14d/16d, 10d=16d/16d, 10d=18d/16d, 10d=20d/16d, 10d=22d/16d, 10d=24d/16d, 10d=26d/16d, 10d=28d/16d, 10d=30d/16d, 10d=32d/16d, 10d=34d/16d, 10d=36d/16d, 10d=38d/16d, 10d=40d/16d, 10d=42d/16d, 10d=44d/16d, 10d=46d/16d, 10d=48d/16d, 10d=50d/16d, 10d=52d/16d, 10d=54d/16d, 10d=56d/16d, 10d=58d/16d, 10d=60d/16d, 10d=62d/16d, 10d=64d/16d, 10d=66d/16d, 10d=68d/16d, 10d=70d/16d, 10d=72d/16d, 10d=74d/16d, 10d=76d/16d, 10d=78d/16d, 10d=80d/16d, 10d=82d/16d, 10d=84d/16d, 10d=86d/16d, 10d=88d/16d, 10d=90d/16d, 10d=92d/16d, 10d=94d/16d, 10d=96d/16d, 10d=98d/16d, 10d=100d/16d, 10d=102d/16d, 10d=104d/16d, 10d=106d/16d, 10d=108d/16d, 10d=110d/16d, 10d=112d/16d, 10d=114d/16d, 10d=116d/16d, 10d=118d/16d, 10d=120d/16d, 10d=122d/16d, 10d=124d/16d, 10d=126d/16d, 10d=128d/16d, 10d=130d/16d, 10d=132d/16d, 10d=134d/16d, 10d=136d/16d, 10d=138d/16d, 10d=140d/16d, 10d=142d/16d, 10d=144d/16d, 10d=146d/16d, 10d=148d/16d, 10d=150d/16d, 10d=152d/16d, 10d=154d/16d, 10d=156d/16d, 10d=158d/16d, 10d=160d/16d, 10d=162d/16d, 10d=164d/16d, 10d=166d/16d, 10d=168d/16d, 10d=170d/16d, 10d=172d/16d, 10d=174d/16d, 10d=176d/16d, 10d=178d/16d, 10d=180d/16d, 10d=182d/16d, 10d=184d/16d, 10d=186d/16d, 10d=188d/16d, 10d=190d/16d, 10d=192d/16d, 10d=194d/16d, 10d=196d/16d, 10d=198d/16d, 10d=200d/16d, 10d=202d/16d, 10d=204d/16d, 10d=206d/16d, 10d=208d/16d, 10d=210d/16d, 10d=212d/16d, 10d=214d/16d, 10d=216d/16d, 10d=218d/16d, 10d=220d/16d, 10d=222d/16d, 10d=224d/16d, 10d=226d/16d, 10d=228d/16d, 10d=230d/16d, 10d=232d/16d, 10d=234d/16d, 10d=236d/16d, 10d=238d/16d, 10d=240d/16d, 10d=242d/16d, 10d=244d/16d, 10d=246d/16d, 10d=248d/16d, 10d=250d/16d, 10d=252d/16d, 10d=254d/16d, 10d=256d/16d, 10d=258d/16d, 10d=260d/16d, 10d=262d/16d, 10d=264d/16d, 10d=266d/16d, 10d=268d/16d, 10d=270d/16d, 10d=272d/16d, 10d=274d/16d, 10d=276d/16d, 10d=278d/16d, 10d=280d/16d, 10d=282d/16d, 10d=284d/16d, 10d=286d/16d, 10d=288d/16d, 10d=290d/16d, 10d=292d/16d, 10d=294d/16d, 10d=296d/16d, 10d=298d/16d, 10d=300d/16d, 10d=302d/16d, 10d=304d/16d, 10d=306d/16d, 10d=308d/16d, 10d=310d/16d, 10d=312d/16d, 10d=314d/16d, 10d=316d/16d, 10d=318d/16d, 10d=320d/16d, 10d=322d/16d, 10d=324d/16d, 10d=326d/16d, 10d=328d/16d, 10d=330d/16d, 10d=332d/16d, 10d=334d/16d, 10d=336d/16d, 10d=338d/16d, 10d=340d/16d, 10d=342d/16d, 10d=344d/16d, 10d=346d/16d, 10d=348d/16d, 10d=350d/16d, 10d=352d/16d, 10d=354d/16d, 10d=356d/16d, 10d=358d/16d, 10d=360d/16d, 10d=362d/16d, 10d=364d/16d, 10d=366d/16d, 10d=368d/16d, 10d=370d/16d, 10d=372d/16d, 10d=374d/16d, 10d=376d/16d, 10d=378d/16d, 10d=380d/16d, 10d=382d/16d, 10d=384d/16d, 10d=386d/16d, 10d=388d/16d, 10d=390d/16d, 10d=392d/16d, 10d=394d/16d, 10d=396d/16d, 10d=398d/16d, 10d=400d/16d, 10d=402d/16d, 10d=404d/16d, 10d=406d/16d, 10d=408d/16d, 10d=410d/16d, 10d=412d/16d, 10d=414d/16d, 10d=416d/16d, 10d=418d/16d, 10d=420d/16d, 10d=422d/16d, 10d=424d/16d, 10d=426d/16d, 10d=428d/16d, 10d=430d/16d, 10d=432d/16d, 10d=434d/16d, 10d=436d/16d, 10d=438d/16d, 10d=440d/16d, 10d=442d/16d, 10d=444d/16d, 10d=446d/16d, 10d=448d/16d, 10d=450d/16d, 10d=452d/16d, 10d=454d/16d, 10d=456d/16d, 10d=458d/16d, 10d=460d/16d, 10d=462d/16d, 10d=464d/16d, 10d=466d/16d, 10d=468d/16d, 10d=470d/16d, 10d=472d/16d, 10d=474d/16d, 10d=476d/16d, 10d=478d/16d, 10d=480d/16d, 10d=482d/16d, 10d=484d/16d, 10d=486d/16d, 10d=488d/16d, 10d=490d/16d, 10d=492d/16d, 10d=494d/16d, 10d=496d/16d, 10d=498d/16d, 10d=500d/16d, 10d=502d/16d, 10d=504d/16d, 10d=506d/16d, 10d=508d/16d, 10d=510d/16d, 10d=512d/16d, 10d=514d/16d, 10d=516d/16d, 10d=518d/16d, 10d=520d/16d, 10d=522d/16d, 10d=524d/16d, 10d=526d/16d, 10d=528d/16d, 10d=530d/16d, 10d=532d/16d, 10d=534d/16d, 10d=536d/16d, 10d=538d/16d, 10d=540d/16d, 10d=542d/16d, 10d=544d/16d, 10d=546d/16d, 10d=548d/16d, 10d=550d/16d, 10d=552d/16d, 10d=554d/16d, 10d=556d/16d, 10d=558d/16d, 10d=560d/16d, 10d=562d/16d, 10d=564d/16d, 10d=566d/16d, 10d=568d/16d, 10d=570d/16d, 10d=572d/16d, 10d=574d/16d, 10d=576d/16d, 10d=578d/16d, 10d=580d/16d, 10d=582d/16d, 10d=584d/16d, 10d=586d/16d, 10d=588d/16d, 10d=590d/16d, 10d=592d/16d, 10d=594d/16d, 10d=596d/16d, 10d=598d/16d, 10d=600d/16d, 10d=602d/16d, 10d=604d/16d, 10d=606d/16d, 10d=608d/16d, 10d=610d/16d, 10d=612d/16d, 10d=614d/16d, 10d=616d/16d, 10d=618d/16d, 10d=620d/16d, 10d=622d/16d, 10d=624d/16d, 10d=626d/16d, 10d=628d/16d, 10d=630d/16d, 10d=632d/16d, 10d=634d/16d, 10d=636d/16d, 10d=638d/16d, 10d=640d/16d, 10d=642d/16d, 10d=644d/16d, 10d=646d/16d, 10d=648d/16d, 10d=650d/16d, 10d=652d/16d, 10d=654d/16d, 10d=656d/16d, 10d=658d/16d, 10d=660d/16d, 10d=662d/16d, 10d=664d/16d, 10d=666d/16d, 10d=668d/16d, 10d=670d/16d, 10d=672d/16d, 10d=674d/16d, 10d=676d/16d, 10d=678d/16d, 10d=680d/16d, 10d=682d/16d, 10d=684d/16d, 10d=686d/16d, 10d=688d/16d, 10d=690d/16d, 10d=692d/16d, 10d=694d/16d, 10d=696d/16d, 10d=698d/16d, 10d=700d/16d, 10d=702d/16d, 10d=704d/16d, 10d=706d/16d, 10d=708d/16d, 10d=710d/16d, 10d=712d/16d, 10d=714d/16d, 10d=716d/16d, 10d=718d/16d, 10d=720d/16d, 10d=722d/16d, 10d=724d/16d, 10d=726d/16d, 10d=728d/16d, 10d=730d/16d, 10d=732d/16d, 10d=734d/16d, 10d=736d/16d, 10d=738d/16d, 10d=740d/16d, 10d=742d/16d, 10d=744d/16d, 10d=746d/16d, 10d=748d/16d, 10d=750d/16d, 10d=752d/16d, 10d=754d/16d, 10d=756d/16d, 10d=758d/16d, 10d=760d/16d, 10d=762d/16d, 10d=764d/16d, 10d=766d/16d, 10d=768d/16d, 10d=770d/16d, 10d=772d/16d, 10d=774d/16d, 10d=776d/16d, 10d=778d/16d, 10d=780d/16d, 10d=782d/16d, 10d=784d/16d, 10d=786d/16d, 10d=788d/16d, 10d=790d/16d, 10d=792d/16d, 10d=794d/16d, 10d=796d/16d, 10d=798d/16d, 10d=800d/16d, 10d=802d/16d, 10d=804d/16d, 10d=806d/16d, 10d=808d/16d, 10d=810d/16d, 10d=812d/16d, 10d=814d/16d, 10d=816d/16d, 10d=818d/16d, 10d=820d/16d, 10d=822d/16d, 10d=824d/16d, 10d=826d/16d, 10d=828d/16d, 10d=830d/16d, 10d=832d/16d, 10d=834d/16d, 10d=836d/16d, 10d=838d/16d, 10d=840d/16d, 10d=842d/16d, 10d=844d/16d, 10d=846d/16d, 10d=848d/16d, 10d=850d/16d, 10d=852d/16d, 10d=854d/16d, 10d=856d/16d, 10d=858d/16d, 10d=860d/16d, 10d=862d/16d, 10d=864d/16d, 10d=866d/16d, 10d=868d/16d, 10d=870d/16d, 10d=872d/16d, 10d=874d/16d, 10d=876d/16d, 10d=878d/16d, 10d=880d/16d, 10d=882d/16d, 10d=884d/16d, 10d=886d/16d, 10d=888d/16d, 10d=890d/16d, 10d=892d/16d, 10d=894d/16d, 10d=896d/16d, 10d=898d/16d, 10d=900d/16d, 10d=902d/16d, 10d=904d/16d, 10d=906d/16d, 10d=908d/16d, 10d=910d/16d, 10d=912d/16d, 10d=914d/16d, 10d=916d/16d, 10d=918d/16d, 10d=920d/16d, 10d=922d/16d, 10d=924d/16d, 10d=926d/16d, 10d=928d/16d, 10d=930d/16d, 10d=932d/16d, 10d=934d/16d, 10d=936d/16d, 10d=938d/16d, 10d=940d/16d, 10d=942d/16d, 10d=944d/16d, 10d=946d/16d, 10d=948d/16d, 10d=950d/16d, 10d=952d/16d, 10d=954d/16d, 10d=956d/16d, 10d=958d/16d, 10d=960d/16d, 10d=962d/16d, 10d=964d/16d, 10d=966d/16d, 10d=968d/16d, 10d=970d/16d, 10d=972d/16d, 10d=974d/16d, 10d=976d/16d, 10d=978d/16d, 10d=980d/16d, 10d=982d/16d, 10d=984d/16d, 10d=986d/16d, 10d=988d/16d, 10d=990d/16d, 10d=992d/16d, 10d=994d/16d, 10d=996d/16d, 10d=998d/16d, 10d=1000d/16d, 10d=1002d/16d, 10d=1004d/16d, 10d=1006d/16d, 10d=1008d/16d, 10d=1010d/16d, 10d=1012d/16d, 10d=1014d/16d, 10d=1016d/16d, 10d=1018d/16d, 10d=1020d/16d, 10d=1022d/16d, 10d=1024