



**Manual S Compliance Report**  
**Entire House**  
**Strada Services**

Job: Lot 23 2265 C-LHG-NW  
 Date: 03/29/2022  
 By: RS  
 Plan: 2265 (Frame)

531 Codisco Way, Sanford, FL 32771 Phone: 877-906-1113 Web: StradaServices.com License: CAC043953

**Project Information**

For: Adams Homes - Preserve at Laurel Lake  
 271 SW Bellflower Drive, Lake City, FL

**Cooling Equipment**

**Design Conditions**

Outdoor design DB:	92.4°F	Sensible gain:	26013	Btuh	Entering coil DB:	76.5°F
Outdoor design WB:	75.8°F	Latent gain:	3785	Btuh	Entering coil WB:	63.2°F
Indoor design DB:	75.0°F	Total gain:	29798	Btuh		
Indoor RH:	50%	Estimated airflow:	1167	cfm		

**Manufacturer's Performance Data at Actual Design Conditions**

Equipment type:	Split ASHP			
Manufacturer:	Carrier	Model:	GH5SAN53600AA0+FJ5ANXB36L00	
Actual airflow:	1167	cfm		
Sensible capacity:	28732	Btuh	110%	of load
Latent capacity:	5125	Btuh	135%	of load
Total capacity:	33857	Btuh	114%	of load SHR: 85%

**Heating Equipment**

**Design Conditions**

Outdoor design DB:	33.3°F	Heat loss:	27751	Btuh	Entering coil DB:	70.0°F
Indoor design DB:	70.0°F					

**Manufacturer's Performance Data at Actual Design Conditions**

Equipment type:	Split ASHP			
Manufacturer:	Carrier	Model:	GH5SAN53600AA0+FJ5ANXB36L00	
Actual airflow:	0	cfm		
Output capacity:	35600	Btuh	128%	of load
Supplemental heat required:	0	Btuh		
			Capacity balance:	28 °F
			Economic balance:	-99 °F

Backup equipment type:	Elec strip			
Manufacturer:		Model:		
Actual airflow:	0	cfm		
Output capacity:	0	kW	0%	of load Temp. rise: 0 °F

Meets all requirements of ACCA Manual S.



Right-Suite® Universal 2025 25.0.01 RSU60693

2026-Apr-20 14:57:40

...eLot 23 2265 C-LHG-NW Lot 23 2265 C-LHG-NW.rup Calc = MJ8 Front Door faces: NW



**Project Summary**  
**Entire House**  
**Strada Services**

Job: Lot 23 2265 C-LHG-NW  
 Date: 03/29/2022  
 By: RS  
 Plan: 2265 (Frame)

531 Codisco Way, Sanford, FL 32771 Phone: 877-906-1113 Web: StradaServices.com License: CAC043953

**Project Information**

For: Adams Homes - Preserve at Laurel Lake  
 271 SW Bellflower Drive, Lake City, FL

Notes: LS: 04/20/26 LCF

**Design Information**

Weather: Gainesville, FL, US

**Winter Design Conditions**

Outside db 33 °F  
 Inside db 70 °F  
 Design TD 37 °F

Ventilation Method MJ8

**Summer Design Conditions**

Outside db 92 °F  
 Inside db 75 °F  
 Design TD 17 °F  
 Daily range M  
 Relative humidity 50 %  
 Moisture difference 43 gr/lb

**Heating Summary**

Structure 24724 Btuh  
 Ducts (R-6.0) 3027 Btuh  
 Central vent (0 cfm) 0 Btuh  
 Humidification 0 Btuh  
 Piping 0 Btuh  
 Equipment load 27751 Btuh

**Infiltration**

Method Simplified  
 Construction quality Average  
 Fireplaces 0

	Heating	Cooling
Area (ft <sup>2</sup> )	2185	2185
Volume (ft <sup>3</sup> )	19665	19665
Air changes/hour	0.32	0.16
Equiv. AVF (cfm)	105	52

**Heating Equipment Summary**

Make Carrier  
 Trade 15 SEER2 HP  
 Model GH5SAN53600AA0  
 AHRI ref 214101828  
 Efficiency 7.5 HSPF2  
 Heating input  
 Heating output 35600 Btuh @ 47°F  
 Temperature rise 0 °F  
 Actual air flow 0 cfm  
 Air flow factor 0 cfm/Btuh  
 Static pressure 0.50 in H2O  
 Space thermostat  
 Capacity balance point = 28 °F

Backup:  
 Input = 0 kW, Output = 0 Btuh, 100 AFUE

**Sensible Cooling Equipment Load Sizing**

Structure 19549 Btuh  
 Ducts (R-6.0) 6464 Btuh  
 Central vent (0 cfm) 0 Btuh  
 Blower 0 Btuh  
 Use manufacturer's data n  
 Rate/swing multiplier 0.97  
 Equipment sensible load 25337 Btuh

**Latent Cooling Equipment Load Sizing**

Structure 2543 Btuh  
 Ducts 1242 Btuh  
 Central vent (0 cfm) 0 Btuh  
 Equipment latent load 3785 Btuh  
**Equipment Total Load (Sen+Lat)** 29122 Btuh  
 Req. total capacity at 0.80 SHR 2.6 ton

**Cooling Equipment Summary**

Make Carrier  
 Trade 15 SEER2 HP  
 Cond GH5SAN53600AA0  
 Coil FJ5ANXB36L00  
 AHRI ref 214101828  
 Efficiency 12.0 EER2, 14.5 SEER2  
 Sensible cooling 28000 Btuh  
 Latent cooling 7000 Btuh  
 Total cooling 35000 Btuh  
 Actual air flow 1167 cfm  
 Air flow factor 0.045 cfm/Btuh  
 Static pressure 0.50 in H2O  
 Load sensible heat ratio 0.87

Calculations approved by ACCA to meet all requirements of Manual J 8th Ed.





# Right-J® Worksheet

## Entire House

### Strada Services

Job: Lot 23 2265 C-LHG-NW  
 Date: 03/29/2022  
 By: RS  
 Plan: 2265 (Frame)

531 Codisco Way, Sanford, FL 32771 Phone: 877-906-1113 Web: StradaServices.com License: CAC043953

1		Room name		Entire House				M Bed						
2		Exposed wall		8.9 ft				38.5 ft						
3		Room height		228.2 ft				8.0 ft						
4		Room dimensions		2209.5 ft²				13.5 x 16.0 ft						
5		Room area						216.0 ft²						
	Ty	Construction number	U-value (Btuh/ft²·°F)	Or	HTM (Btuh/ft²)		Area (ft²) or perimeter (ft)		Load (Btuh)		Area (ft²) or perimeter (ft)		Load (Btuh)	
					Heat	Cool	Gross	N/P/S	Heat	Cool	Gross	N/P/S	Heat	Cool
6	W	12C-0sw	0.091	ne	3.34	2.76	448	400	1337	1107	72	54	181	150
	G	10D-v	0.330	ne	12.11	13.92	18	0	215	248	18	0	215	248
	G	4A4-2ov	0.330	ne	12.11	17.07	30	0	363	512	0	0	0	0
11	W	12C-0sw	0.091	se	3.34	2.76	484	378	1263	1046	108	78	260	216
	G	10D-v	0.330	se	12.11	7.08	18	18	215	126	0	0	0	0
	G	4A4-2ov	0.330	se	12.11	18.14	30	7	363	544	30	7	363	544
	G	4A4-2ov	0.330	se	12.11	15.73	15	4	182	236	0	0	0	0
	G	4A4-2ov	0.330	se	12.11	8.86	30	30	363	266	0	0	0	0
	G	4A4-2ov	0.330	se	12.11	8.86	12	12	151	111	0	0	0	0
	W	12C-0sw	0.091	s	3.34	2.76	42	30	100	83	0	0	0	0
	G	4A4-2ov	0.330	s	12.11	8.86	12	12	151	111	0	0	0	0
	W	16B-19ad	0.049	s	1.80	2.62	110	110	198	288	0	0	0	0
	W	12C-0sw	0.091	sw	3.34	2.76	426	385	1287	1065	128	128	427	354
	G	10D-v	0.330	sw	12.11	7.08	17	17	202	118	0	0	0	0
	G	4A4-2ov	0.330	sw	12.11	14.33	9	4	109	129	0	0	0	0
	G	4A4-2ov	0.330	sw	12.11	15.73	15	4	182	236	0	0	0	0
	W	12C-0sw	0.091	nw	3.34	2.76	314	208	693	574	0	0	0	0
	G	4A4-2ov	0.330	nw	12.11	17.07	30	0	363	512	0	0	0	0
	G	4A4-2ov	0.330	nw	12.11	17.07	36	0	436	614	0	0	0	0
	G	4B4-2fv	0.330	nw	12.11	19.88	7	0	85	139	0	0	0	0
	G	4B4-2fv	0.330	nw	12.11	19.88	13	0	162	265	0	0	0	0
	D	11D0	0.390	nw	14.31	11.68	20	20	286	234	0	0	0	0
	P	12C-0sw	0.091	-	3.34	1.68	216	198	662	333	0	0	0	0
	D	11D0	0.390	n	14.31	11.68	18	18	255	208	0	0	0	0
	C	16B-30ad	0.032	-	1.17	1.71	2217	2217	2603	3791	216	216	254	369
	F	22A-ipl	0.989	-	36.30	0.00	2210	228	8282	0	216	38	1397	0
6	c) AED excursion									255				38
	Envelope loss/gain								20509	13150			3099	1919
12	a) Infiltration								4215	999			712	169
	b) Room ventilation								0	0			0	0
13	Internal gains:		Occupants @	230			5			1150	2			460
			Appliances/other							4250				600
	Subtotal (lines 6 to 13)								24724	19549			3811	3147
	Less external load								0	0			0	0
	Less transfer								0	0			0	0
	Redistribution								0	0			0	0
14	Subtotal								24724	19549			3811	3147
15	Duct loads						12%	33%	3027	6464	12%	33%	467	1041
	Total room load								27751	26013			4277	4188
	Air required (cfm)								0	1167			0	188

Calculations approved by ACCA to meet all requirements of Manual J 8th Ed.



Right-Suite® Universal 2025 25.0.01 RSU60693

2026-Apr-20 14:57:50

...eLot 23 2265 C-LHG-NW Lot 23 2265 C-LHG-NW.rup Calc = MJ8 Front Door faces: NW

Page 1



# Right-J® Worksheet

## Entire House

### Strada Services

Job: Lot 23 2265 C-LHG-NW  
 Date: 03/29/2022  
 By: RS  
 Plan: 2265 (Frame)

531 Codisco Way, Sanford, FL 32771 Phone: 877-906-1113 Web: StradaServices.com License: CAC043953

1		Room name				Bed 4				Bed 2				
2		Exposed wall				8.0 ft 25.5 ft heat/cool				8.0 ft 28.5 ft heat/cool				
3		Room height				1.0 x 148.5 ft				11.5 x 14.5 ft				
4		Room dimensions				148.5 ft²				166.8 ft²				
5		Room area												
	Ty	Construction number	U-value (Btuh/ft²·°F)	Or	HTM (Btuh/ft²)		Area (ft²) or perimeter (ft)		Load (Btuh)		Area (ft²) or perimeter (ft)		Load (Btuh)	
					Heat	Cool	Gross	N/P/S	Heat	Cool	Gross	N/P/S	Heat	Cool
6	W	12C-0sw	0.091	ne	3.34	2.76	112	112	374	310	116	101	337	279
	G	10D-v	0.330	ne	12.11	13.92	0	0	0	0	0	0	0	0
	G	4A4-2ov	0.330	ne	12.11	17.07	0	0	0	0	15	0	182	256
11	W	12C-0sw	0.091	se	3.34	2.76	92	77	257	213	0	0	0	0
	G	10D-v	0.330	se	12.11	7.08	0	0	0	0	0	0	0	0
	G	4A4-2ov	0.330	se	12.11	18.14	0	0	0	0	0	0	0	0
	G	4A4-2ov	0.330	se	12.11	15.73	15	4	182	236	0	0	0	0
	G	4A4-2ov	0.330	se	12.11	8.86	0	0	0	0	0	0	0	0
	G	4A4-2ov	0.330	se	12.11	8.86	0	0	0	0	0	0	0	0
	W	12C-0sw	0.091	s	3.34	2.76	0	0	0	0	0	0	0	0
	G	4A4-2ov	0.330	s	12.11	8.86	0	0	0	0	0	0	0	0
	W	16B-19ad	0.049	s	1.80	2.62	0	0	0	0	0	0	0	0
	W	12C-0sw	0.091	sw	3.34	2.76	0	0	0	0	0	0	0	0
	G	10D-v	0.330	sw	12.11	7.08	0	0	0	0	0	0	0	0
	G	4A4-2ov	0.330	sw	12.11	14.33	0	0	0	0	0	0	0	0
	G	4A4-2ov	0.330	sw	12.11	15.73	0	0	0	0	0	0	0	0
	W	12C-0sw	0.091	nw	3.34	2.76	0	0	0	0	0	0	0	0
	G	4A4-2ov	0.330	nw	12.11	17.07	0	0	0	0	0	0	0	0
	G	4A4-2ov	0.330	nw	12.11	17.07	0	0	0	0	0	0	0	0
	G	4B4-2fv	0.330	nw	12.11	19.88	0	0	0	0	0	0	0	0
	G	4B4-2fv	0.330	nw	12.11	19.88	0	0	0	0	0	0	0	0
	D	11D0	0.390	nw	14.31	11.68	0	0	0	0	0	0	0	0
	P	12C-0sw	0.091	-	3.34	1.68	0	0	0	0	112	112	374	188
	D	11D0	0.390	n	14.31	11.68	0	0	0	0	0	0	0	0
	C	16B-30ad	0.032	-	1.17	1.71	148	148	174	254	167	167	196	285
	F	22A-ipl	0.989	-	36.30	0.00	148	26	926	0	167	28	1034	0
6	c) AED excursion									56				-63
	Envelope loss/gain								1913	1069			2123	945
12	a) Infiltration								471	112			268	64
	b) Room ventilation								0	0			0	0
13	Internal gains:		Occupants @	230		1			230	150	1		230	150
			Appliances/other											
	Subtotal (lines 6 to 13)								2384	1561			2391	1389
	Less external load								0	0			0	0
	Less transfer								0	0			0	0
	Redistribution								0	0			0	0
14	Subtotal								2384	1561			2391	1389
15	Duct loads						12%	33%	292	516	12%	33%	293	459
	Total room load								2676	2077			2684	1848
	Air required (cfm)								0	93			0	83

Calculations approved by ACCA to meet all requirements of Manual J 8th Ed.



Right-Suite® Universal 2025 25.0.01 RSU60693

2026-Apr-20 14:57:50

...eLot 23 2265 C-LHG-NW Lot 23 2265 C-LHG-NW.rup Calc = MJ8 Front Door faces: NW

Page 2



# Right-J® Worksheet

## Entire House

### Strada Services

Job: Lot 23 2265 C-LHG-NW  
 Date: 03/29/2022  
 By: RS  
 Plan: 2265 (Frame)

531 Codisco Way, Sanford, FL 32771 Phone: 877-906-1113 Web: StradaServices.com License: CAC043953

1		Room name				Bed 3				Laundry				
2		Exposed wall				8.0 ft		13.5 ft		8.0 ft		10.0 ft		
3		Room height				1.0		x		145.2 ft		heat/cool		
4		Room dimensions				145.2 ft²				82.5 ft²		heat/cool		
5		Room area												
	Ty	Construction number	U-value (Btuh/ft²·°F)	Or	HTM (Btuh/ft²)		Area (ft²) or perimeter (ft)		Load (Btuh)		Area (ft²) or perimeter (ft)		Load (Btuh)	
					Heat	Cool	Gross	N/P/S	Heat	Cool	Gross	N/P/S	Heat	Cool
6	W	12C-0sw	0.091	ne	3.34	2.76	108	93	311	257	0	0	0	0
	G	10D-v	0.330	ne	12.11	13.92	0	0	0	0	0	0	0	0
	G	4A4-2ov	0.330	ne	12.11	17.07	15	0	182	256	0	0	0	0
11	W	12C-0sw	0.091	se	3.34	2.76	0	0	0	0	0	0	0	0
	G	10D-v	0.330	se	12.11	7.08	0	0	0	0	0	0	0	0
	G	4A4-2ov	0.330	se	12.11	18.14	0	0	0	0	0	0	0	0
	G	4A4-2ov	0.330	se	12.11	15.73	0	0	0	0	0	0	0	0
	G	4A4-2ov	0.330	se	12.11	8.86	0	0	0	0	0	0	0	0
	G	4A4-2ov	0.330	se	12.11	8.86	0	0	0	0	0	0	0	0
	W	12C-0sw	0.091	s	3.34	2.76	0	0	0	0	0	0	0	0
	G	4A4-2ov	0.330	s	12.11	8.86	0	0	0	0	0	0	0	0
	W	16B-19ad	0.049	s	1.80	2.62	0	0	0	0	0	0	0	0
	W	12C-0sw	0.091	sw	3.34	2.76	0	0	0	0	0	0	0	0
	G	10D-v	0.330	sw	12.11	7.08	0	0	0	0	0	0	0	0
	G	4A4-2ov	0.330	sw	12.11	14.33	0	0	0	0	0	0	0	0
	G	4A4-2ov	0.330	sw	12.11	15.73	0	0	0	0	0	0	0	0
	W	12C-0sw	0.091	nw	3.34	2.76	0	0	0	0	16	16	53	44
	G	4A4-2ov	0.330	nw	12.11	17.07	0	0	0	0	0	0	0	0
	G	4A4-2ov	0.330	nw	12.11	17.07	0	0	0	0	0	0	0	0
	G	4B4-2fv	0.330	nw	12.11	19.88	0	0	0	0	0	0	0	0
	G	4B4-2fv	0.330	nw	12.11	19.88	0	0	0	0	0	0	0	0
	D	11D0	0.390	nw	14.31	11.68	0	0	0	0	0	0	0	0
	P	12C-0sw	0.091	-	3.34	1.68	0	0	0	0	64	46	154	78
	D	11D0	0.390	n	14.31	11.68	0	0	0	0	18	18	255	208
	C	16B-30ad	0.032	-	1.17	1.71	145	145	171	248	82	82	97	141
	F	22A-ipl	0.989	-	36.30	0.00	145	14	490	0	82	10	363	0
6	c) AED excursion									-53				-43
	Envelope loss/gain								1153	709			922	428
12	a) Infiltration								250	59			37	9
	b) Room ventilation								0	0			0	0
13	Internal gains:		Occupants @	230		1			230	150	0			0
			Appliances/other											500
	Subtotal (lines 6 to 13)								1402	1148			959	937
	Less external load								0	0			0	0
	Less transfer								0	0			0	0
	Redistribution								0	0			0	0
14	Subtotal								1402	1148			959	937
15	Duct loads						12%	33%	172	380	12%	33%	117	310
	Total room load								1574	1528			1077	1246
	Air required (cfm)								0	69			0	56

Calculations approved by ACCA to meet all requirements of Manual J 8th Ed.



Right-Suite® Universal 2025 25.0.01 RSU60693

2026-Apr-20 14:57:50

...eLot 23 2265 C-LHG-NW Lot 23 2265 C-LHG-NW.rup Calc = MJ8 Front Door faces: NW

Page 3



# Right-J® Worksheet

## Entire House

### Strada Services

Job: Lot 23 2265 C-LHG-NW  
 Date: 03/29/2022  
 By: RS  
 Plan: 2265 (Frame)

531 Codisco Way, Sanford, FL 32771 Phone: 877-906-1113 Web: StradaServices.com License: CAC043953

1 Room name				M WIC Int		Kitchen/Nook								
2 Exposed wall				0 ft		8.7 ft								
3 Room height				8.0 ft		10.0 ft								
4 Room dimensions				5.0 x 7.0 ft		1.0 x 289.2 ft								
5 Room area				35.0 ft²		289.2 ft²								
	Ty	Construction number	U-value (Btuh/ft²·°F)	Or	HTM (Btuh/ft²)		Area (ft²) or perimeter (ft)		Load (Btuh)		Area (ft²) or perimeter (ft)		Load (Btuh)	
					Heat	Cool	Gross	N/P/S	Heat	Cool	Gross	N/P/S	Heat	Cool
6	W	12C-0sw	0.091	ne	3.34	2.76	0	0	0	0	0	0	0	0
	G	10D-v	0.330	ne	12.11	13.92	0	0	0	0	0	0	0	0
	G	4A4-2ov	0.330	ne	12.11	17.07	0	0	0	0	0	0	0	0
11	W	12C-0sw	0.091	se	3.34	2.76	0	0	0	0	45	32	109	90
	G	10D-v	0.330	se	12.11	7.08	0	0	0	0	0	0	0	0
	G	4A4-2ov	0.330	se	12.11	18.14	0	0	0	0	0	0	0	0
	G	4A4-2ov	0.330	se	12.11	15.73	0	0	0	0	0	0	0	0
	G	4A4-2ov	0.330	se	12.11	8.86	0	0	0	0	0	0	0	0
	G	4A4-2ov	0.330	se	12.11	8.86	0	0	0	0	12	12	151	111
	W	12C-0sw	0.091	s	3.34	2.76	0	0	0	0	42	30	100	83
	G	4A4-2ov	0.330	s	12.11	8.86	0	0	0	0	12	12	151	111
	W	16B-19ad	0.049	s	1.80	2.62	0	0	0	0	40	40	72	105
	W	12C-0sw	0.091	sw	3.34	2.76	0	0	0	0	0	0	0	0
	G	10D-v	0.330	sw	12.11	7.08	0	0	0	0	0	0	0	0
	G	4A4-2ov	0.330	sw	12.11	14.33	0	0	0	0	0	0	0	0
	G	4A4-2ov	0.330	sw	12.11	15.73	0	0	0	0	0	0	0	0
	W	12C-0sw	0.091	nw	3.34	2.76	0	0	0	0	0	0	0	0
	G	4A4-2ov	0.330	nw	12.11	17.07	0	0	0	0	0	0	0	0
	G	4A4-2ov	0.330	nw	12.11	17.07	0	0	0	0	0	0	0	0
	G	4B4-2fv	0.330	nw	12.11	19.88	0	0	0	0	0	0	0	0
	G	4B4-2fv	0.330	nw	12.11	19.88	0	0	0	0	0	0	0	0
	D	11D0	0.390	nw	14.31	11.68	0	0	0	0	0	0	0	0
	P	12C-0sw	0.091	-	3.34	1.68	0	0	0	0	0	0	0	0
	D	11D0	0.390	n	14.31	11.68	0	0	0	0	0	0	0	0
	C	16B-30ad	0.032	-	1.17	1.71	35	35	41	60	289	289	340	495
	F	22A-ipl	0.989	-	36.30	0.00	35	0	0	0	289	9	315	0
6	c) AED excursion													-99
	Envelope loss/gain								41	57			1237	895
12	a) Infiltration								0	0			294	70
	b) Room ventilation								0	0			0	0
13	Internal gains:		Occupants @	230		0			0	0				0
			Appliances/other						0	0				1200
	Subtotal (lines 6 to 13)								41	57			1532	2164
	Less external load								0	0			0	0
	Less transfer								0	0			0	0
	Redistribution								0	0			0	0
14	Subtotal								41	57			1532	2164
15	Duct loads					12%	33%		5	19	12%	33%	188	716
	Total room load								46	76			1719	2880
	Air required (cfm)								0	3			0	129

Calculations approved by ACCA to meet all requirements of Manual J 8th Ed.



Right-Suite® Universal 2025 25.0.01 RSU60693

2026-Apr-20 14:57:50

...eLot 23 2265 C-LHG-NW Lot 23 2265 C-LHG-NW.rup Calc = MJ8 Front Door faces: NW

Page 4



# Right-J® Worksheet

## Entire House

### Strada Services

Job: Lot 23 2265 C-LHG-NW  
 Date: 03/29/2022  
 By: RS  
 Plan: 2265 (Frame)

531 Codisco Way, Sanford, FL 32771 Phone: 877-906-1113 Web: StradaServices.com License: CAC043953

1		Room name				Fam/Din/Foy				MWC				
2		Exposed wall				36.5 ft				0 ft				
3		Room height				10.0 ft				8.0 ft				
4		Room dimensions				1.0 x 636.5 ft				1.0 x 20.9 ft				
5		Room area				636.5 ft²				20.9 ft²				
	Ty	Construction number	U-value (Btuh/ft²·°F)	Or	HTM (Btuh/ft²)		Area (ft²) or perimeter (ft)		Load (Btuh)		Area (ft²) or perimeter (ft)		Load (Btuh)	
					Heat	Cool	Gross	N/P/S	Heat	Cool	Gross	N/P/S	Heat	Cool
6	W	12C-0sw	0.091	ne	3.34	2.76	0	0	0	0	0	0	0	0
	G	10D-v	0.330	ne	12.11	13.92	0	0	0	0	0	0	0	0
	G	4A4-2ov	0.330	ne	12.11	17.07	0	0	0	0	0	0	0	0
11	W	12C-0sw	0.091	se	3.34	2.76	165	117	391	324	0	0	0	0
	G	10D-v	0.330	se	12.11	7.08	18	18	215	126	0	0	0	0
	G	4A4-2ov	0.330	se	12.11	18.14	0	0	0	0	0	0	0	0
	G	4A4-2ov	0.330	se	12.11	15.73	0	0	0	0	0	0	0	0
	G	4A4-2ov	0.330	se	12.11	8.86	30	30	363	266	0	0	0	0
	G	4A4-2ov	0.330	se	12.11	8.86	0	0	0	0	0	0	0	0
	W	12C-0sw	0.091	s	3.34	2.76	0	0	0	0	0	0	0	0
	G	4A4-2ov	0.330	s	12.11	8.86	0	0	0	0	0	0	0	0
	W	16B-19ad	0.049	s	1.80	2.62	70	70	126	183	0	0	0	0
	W	12C-0sw	0.091	sw	3.34	2.76	10	10	33	28	0	0	0	0
	G	10D-v	0.330	sw	12.11	7.08	0	0	0	0	0	0	0	0
	G	4A4-2ov	0.330	sw	12.11	14.33	0	0	0	0	0	0	0	0
	G	4A4-2ov	0.330	sw	12.11	15.73	0	0	0	0	0	0	0	0
	W	12C-0sw	0.091	nw	3.34	2.76	190	114	380	314	0	0	0	0
	G	4A4-2ov	0.330	nw	12.11	17.07	0	0	0	0	0	0	0	0
	G	4A4-2ov	0.330	nw	12.11	17.07	36	0	436	614	0	0	0	0
	G	4B4-2fv	0.330	nw	12.11	19.88	7	0	85	139	0	0	0	0
	G	4B4-2fv	0.330	nw	12.11	19.88	13	0	162	265	0	0	0	0
	D	11D0	0.390	nw	14.31	11.68	20	20	286	234	0	0	0	0
	P	12C-0sw	0.091	-	3.34	1.68	0	0	0	0	0	0	0	0
	D	11D0	0.390	n	14.31	11.68	0	0	0	0	0	0	0	0
	C	16B-30ad	0.032	-	1.17	1.71	636	636	748	1089	21	21	25	36
	F	22A-ipl	0.989	-	36.30	0.00	636	36	1325	0	21	0	0	0
6	c) AED excursion									111				-2
	Envelope loss/gain								4550	3694			25	34
12	a) Infiltration								1005	238			0	0
	b) Room ventilation								0	0			0	0
13	Internal gains:		Occupants @	230		0			0	0			0	0
			Appliances/other						900				0	0
	Subtotal (lines 6 to 13)								5555	4832			25	34
	Less external load								0	0			0	0
	Less transfer								0	0			0	0
	Redistribution								0	0			0	0
14	Subtotal								5555	4832			25	34
15	Duct loads					12%	33%		680	1598	12%	33%	3	11
	Total room load								6236	6430			28	45
	Air required (cfm)								0	288			0	2

Calculations approved by ACCA to meet all requirements of Manual J 8th Ed.



Right-Suite® Universal 2025 25.0.01 RSU60693

2026-Apr-20 14:57:50

...eLot 23 2265 C-LHG-NW Lot 23 2265 C-LHG-NW.rup Calc = MJ8 Front Door faces: NW

Page 5



# Right-J® Worksheet

## Entire House

### Strada Services

Job: Lot 23 2265 C-LHG-NW  
 Date: 03/29/2022  
 By: RS  
 Plan: 2265 (Frame)

531 Codisco Way, Sanford, FL 32771 Phone: 877-906-1113 Web: StradaServices.com License: CAC043953

1		Room name				Bth 2				Living					
2		Exposed wall				8.0 ft		5.0 ft		8.8 ft		31.0 ft			
3		Room height				heat/cool				heat/cool					
4		Room dimensions				42.5 ft <sup>2</sup>		5.0 x 8.5 ft		168.8 ft <sup>2</sup>		13.5 x 12.5 ft			
5		Room area													
	Ty	Construction number	U-value (Btuh/ft <sup>2</sup> ·°F)	Or	HTM (Btuh/ft <sup>2</sup> )		Area (ft <sup>2</sup> ) or perimeter (ft)		Load (Btuh)		Area (ft <sup>2</sup> ) or perimeter (ft)		Load (Btuh)		
					Heat	Cool	Gross	N/P/S	Heat	Cool	Gross	N/P/S	Heat	Cool	
6	W	12C-0sw	0.091	ne	3.34	2.76	0	0	0	0	40	40	134	111	
	G	10D-v	0.330	ne	12.11	13.92	0	0	0	0	0	0	0	0	
	G	4A4-2ov	0.330	ne	12.11	17.07	0	0	0	0	0	0	0	0	
11	W	12C-0sw	0.091	se	3.34	2.76	0	0	0	0	14	14	45	37	
	G	10D-v	0.330	se	12.11	7.08	0	0	0	0	0	0	0	0	
	G	4A4-2ov	0.330	se	12.11	18.14	0	0	0	0	0	0	0	0	
	G	4A4-2ov	0.330	se	12.11	15.73	0	0	0	0	0	0	0	0	
	G	4A4-2ov	0.330	se	12.11	8.86	0	0	0	0	0	0	0	0	
	G	4A4-2ov	0.330	se	12.11	8.86	0	0	0	0	0	0	0	0	
	W	12C-0sw	0.091	s	3.34	2.76	0	0	0	0	0	0	0	0	
	G	4A4-2ov	0.330	s	12.11	8.86	0	0	0	0	0	0	0	0	
	W	16B-19ad	0.049	s	1.80	2.62	0	0	0	0	0	0	0	0	
	W	12C-0sw	0.091	sw	3.34	2.76	0	0	0	0	100	85	284	235	
	G	10D-v	0.330	sw	12.11	7.08	0	0	0	0	0	0	0	0	
	G	4A4-2ov	0.330	sw	12.11	14.33	0	0	0	0	0	0	0	0	
	G	4A4-2ov	0.330	sw	12.11	15.73	0	0	0	0	15	4	182	236	
	W	12C-0sw	0.091	nw	3.34	2.76	0	0	0	0	108	78	260	216	
	G	4A4-2ov	0.330	nw	12.11	17.07	0	0	0	0	30	0	363	512	
	G	4A4-2ov	0.330	nw	12.11	17.07	0	0	0	0	0	0	0	0	
	G	4B4-2fv	0.330	nw	12.11	19.88	0	0	0	0	0	0	0	0	
	G	4B4-2fv	0.330	nw	12.11	19.88	0	0	0	0	0	0	0	0	
	D	11D0	0.390	nw	14.31	11.68	0	0	0	0	0	0	0	0	
	P	12C-0sw	0.091	-	3.34	1.68	40	40	134	67	0	0	0	0	
	D	11D0	0.390	n	14.31	11.68	0	0	0	0	0	0	0	0	
	C	16B-30ad	0.032	-	1.17	1.71	42	42	50	73	176	176	207	301	
	F	22A-ipl	0.989	-	36.30	0.00	42	5	181	0	169	31	1125	0	
6	c) AED excursion									-6				274	
	Envelope loss/gain									365	134			2600	1921
12	a) Infiltration									0	0			604	143
	b) Room ventilation									0	0			0	0
13	Internal gains:		Occupants @	230			0			0	0			0	600
			Appliances/other							0					
	Subtotal (lines 6 to 13)									365	134			3204	2664
	Less external load									0	0			0	0
	Less transfer									0	0			0	0
	Redistribution									0	0			0	0
14	Subtotal									365	134			3204	2664
15	Duct loads						12%	33%		45	44	12%	33%	392	881
	Total room load									410	178			3596	3545
	Air required (cfm)									0	8			0	159

Calculations approved by ACCA to meet all requirements of Manual J 8th Ed.



Right-Suite® Universal 2025 25.0.01 RSU60693

2026-Apr-20 14:57:50

...eLot 23 2265 C-LHG-NW Lot 23 2265 C-LHG-NW.rup Calc = MJ8 Front Door faces: NW

Page 6



# Right-J® Worksheet

## Entire House

### Strada Services

Job: Lot 23 2265 C-LHG-NW  
 Date: 03/29/2022  
 By: RS  
 Plan: 2265 (Frame)

531 Codisco Way, Sanford, FL 32771 Phone: 877-906-1113 Web: StradaServices.com License: CAC043953

1		Room name				M WIC Ext				Bath 3				
2		Exposed wall				7.0 ft				13.5 ft				
3		Room height				8.0 ft		heat/cool		8.0 ft		heat/cool		
4		Room dimensions				5.5 x 7.0 ft				1.0 x 7.2 ft				
5		Room area				38.5 ft²				77.2 ft²				
	Ty	Construction number	U-value (Btuh/ft²·°F)	Or	HTM (Btuh/ft²)		Area (ft²) or perimeter (ft)		Load (Btuh)		Area (ft²) or perimeter (ft)		Load (Btuh)	
					Heat	Cool	Gross	N/P/S	Heat	Cool	Gross	N/P/S	Heat	Cool
6	W	12C-0sw	0.091	ne	3.34	2.76	0	0	0	0	0	0	0	0
	G	10D-v	0.330	ne	12.11	13.92	0	0	0	0	0	0	0	0
	G	4A4-2ov	0.330	ne	12.11	17.07	0	0	0	0	0	0	0	0
11	W	12C-0sw	0.091	se	3.34	2.76	0	0	0	0	60	60	200	166
	G	10D-v	0.330	se	12.11	7.08	0	0	0	0	0	0	0	0
	G	4A4-2ov	0.330	se	12.11	18.14	0	0	0	0	0	0	0	0
	G	4A4-2ov	0.330	se	12.11	15.73	0	0	0	0	0	0	0	0
	G	4A4-2ov	0.330	se	12.11	8.86	0	0	0	0	0	0	0	0
	G	4A4-2ov	0.330	se	12.11	8.86	0	0	0	0	0	0	0	0
	W	12C-0sw	0.091	s	3.34	2.76	0	0	0	0	0	0	0	0
	G	4A4-2ov	0.330	s	12.11	8.86	0	0	0	0	0	0	0	0
	W	16B-19ad	0.049	s	1.80	2.62	0	0	0	0	0	0	0	0
	W	12C-0sw	0.091	sw	3.34	2.76	56	56	187	155	48	31	105	87
	G	10D-v	0.330	sw	12.11	7.08	0	0	0	0	17	17	202	118
	G	4A4-2ov	0.330	sw	12.11	14.33	0	0	0	0	0	0	0	0
	G	4A4-2ov	0.330	sw	12.11	15.73	0	0	0	0	0	0	0	0
	W	12C-0sw	0.091	nw	3.34	2.76	0	0	0	0	0	0	0	0
	G	4A4-2ov	0.330	nw	12.11	17.07	0	0	0	0	0	0	0	0
	G	4A4-2ov	0.330	nw	12.11	17.07	0	0	0	0	0	0	0	0
	G	4B4-2fv	0.330	nw	12.11	19.88	0	0	0	0	0	0	0	0
	G	4B4-2fv	0.330	nw	12.11	19.88	0	0	0	0	0	0	0	0
	D	11D0	0.390	nw	14.31	11.68	0	0	0	0	0	0	0	0
	P	12C-0sw	0.091	-	3.34	1.68	0	0	0	0	0	0	0	0
	D	11D0	0.390	n	14.31	11.68	0	0	0	0	0	0	0	0
	C	16B-30ad	0.032	-	1.17	1.71	38	38	45	66	77	77	91	132
	F	22A-ipl	0.989	-	36.30	0.00	38	7	254	0	77	14	490	0
6	c) AED excursion									-11				16
	Envelope loss/gain								486	210			1088	519
12	a) Infiltration								129	31			250	59
	b) Room ventilation								0	0			0	0
13	Internal gains:		Occupants @		230		0			0	0			0
			Appliances/other							0				0
	Subtotal (lines 6 to 13)								616	240			1337	578
	Less external load								0	0			0	0
	Less transfer								0	0			0	0
	Redistribution								0	0			0	0
14	Subtotal								616	240			1337	578
15	Duct loads						12%	33%	75	79	12%	33%	164	191
	Total room load								691	320			1501	769
	Air required (cfm)								0	14			0	35

Calculations approved by ACCA to meet all requirements of Manual J 8th Ed.



Right-Suite® Universal 2025 25.0.01 RSU60693

2026-Apr-20 14:57:50

...eLot 23 2265 C-LHG-NW Lot 23 2265 C-LHG-NW.rup Calc = MJ8 Front Door faces: NW

Page 7



# Right-J® Worksheet

## Entire House

### Strada Services

Job: Lot 23 2265 C-LHG-NW  
 Date: 03/29/2022  
 By: RS  
 Plan: 2265 (Frame)

531 Codisco Way, Sanford, FL 32771 Phone: 877-906-1113 Web: StradaServices.com License: CAC043953

1 Room name				M Bath										
2 Exposed wall				8.0 ft		10.5 ft		heat/cool						
3 Room height				1.0		x		141.9 ft						
4 Room dimensions				141.9 ft²										
5 Room area														
	Ty	Construction number	U-value (Btuh/ft²·°F)	Or	HTM (Btuh/ft²)		Area (ft²) or perimeter (ft)		Load (Btuh)		Area or perimeter		Load	
					Heat	Cool	Gross	N/P/S	Heat	Cool	Gross	N/P/S	Heat	Cool
6	W	12C-0sw	0.091	ne	3.34	2.76	0	0	0	0				
	G	10D-v	0.330	ne	12.11	13.92	0	0	0	0				
	G	4A4-2ov	0.330	ne	12.11	17.07	0	0	0	0				
11	W	12C-0sw	0.091	se	3.34	2.76	0	0	0	0				
	G	10D-v	0.330	se	12.11	7.08	0	0	0	0				
	G	4A4-2ov	0.330	se	12.11	18.14	0	0	0	0				
	G	4A4-2ov	0.330	se	12.11	15.73	0	0	0	0				
	G	4A4-2ov	0.330	se	12.11	8.86	0	0	0	0				
	G	4A4-2ov	0.330	se	12.11	8.86	0	0	0	0				
	W	12C-0sw	0.091	s	3.34	2.76	0	0	0	0				
	G	4A4-2ov	0.330	s	12.11	8.86	0	0	0	0				
	W	16B-19ad	0.049	s	1.80	2.62	0	0	0	0				
	W	12C-0sw	0.091	sw	3.34	2.76	84	75	250	207				
	G	10D-v	0.330	sw	12.11	7.08	0	0	0	0				
	G	4A4-2ov	0.330	sw	12.11	14.33	9	4	109	129				
	G	4A4-2ov	0.330	sw	12.11	15.73	0	0	0	0				
	W	12C-0sw	0.091	nw	3.34	2.76	0	0	0	0				
	G	4A4-2ov	0.330	nw	12.11	17.07	0	0	0	0				
	G	4A4-2ov	0.330	nw	12.11	17.07	0	0	0	0				
	G	4B4-2fv	0.330	nw	12.11	19.88	0	0	0	0				
	G	4B4-2fv	0.330	nw	12.11	19.88	0	0	0	0				
	D	11D0	0.390	nw	14.31	11.68	0	0	0	0				
	P	12C-0sw	0.091	-	3.34	1.68	0	0	0	0				
	D	11D0	0.390	n	14.31	11.68	0	0	0	0				
	C	16B-30ad	0.032	-	1.17	1.71	142	142	167	243				
	F	22A-tpi	0.989	-	36.30	0.00	142	10	381	0				
6	c) AED excursion									39				
	Envelope loss/gain								907	618				
12	a) Infiltration								194	46				
	b) Room ventilation								0	0				
13	Internal gains:		Occupants @	230			0			0				
			Appliances/other							0				
	Subtotal (lines 6 to 13)								1101	664				
	Less external load								0	0				
	Less transfer								0	0				
	Redistribution								0	0				
14	Subtotal								1101	664				
15	Duct loads						12%	33%	135	219				
	Total room load								1236	883				
	Air required (cfm)								0	40				

Calculations approved by ACCA to meet all requirements of Manual J 8th Ed.



Right-Suite® Universal 2025 25.0.01 RSU60693

2026-Apr-20 14:57:50

...eLot 23 2265 C-LHG-NW Lot 23 2265 C-LHG-NW.rup Calc = MJ8 Front Door faces: NW

Page 8



# Duct System Summary

## Entire House

Strada Services

Job: Lot 23 2265 C-LHG-NW  
 Date: 03/29/2022  
 By: RS  
 Plan: 2265 (Frame)

531 Codisco Way, Sanford, FL 32771 Phone: 877-906-1113 Web: StradaServices.com License: CAC043953

### Project Information

For: Adams Homes - Preserve at Laurel Lake  
 271 SW Bellflower Drive, Lake City, FL

	Heating	Cooling
External static pressure	0.50 in H2O	0.50 in H2O
Pressure losses	0.16 in H2O	0.16 in H2O
Available static pressure	0.34 in H2O	0.34 in H2O
Supply / return available pressure	0.170 / 0.170 in H2O	0.170 / 0.170 in H2O
Lowest friction rate	0.199 in/100ft	0.199 in/100ft
Actual air flow	0 cfm	1167 cfm
Total effective length (TEL)	171 ft	

### Supply Branch Detail Table

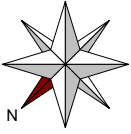
Name	Design (Btuh)	Htg (cfm)	Clg (cfm)	Design FR	Diam (in)	H x W (in)	Duct Matl	Actual Ln (ft)	Ftg.Eqv Ln (ft)	Trunk
Bath 3	c 769	0	35	0.199	4.0	0x0	VIFx	35.6	135.0	st2
Bed 2	c 1848	0	83	0.240	6.0	0x0	VIFx	21.8	120.0	st2
Bed 3	c 1528	0	69	0.238	6.0	0x0	VIFx	22.9	120.0	st2
Bed 4	c 2077	0	93	0.205	6.0	0x0	VIFx	35.8	130.0	st2
Bth 2	c 178	0	8	0.236	4.0	0x0	VIFx	19.0	125.0	st2
Fam/Din/Foy	c 2143	0	96	0.423	6.0	0x0	VIFx	5.3	75.0	
Fam/Din/Foy-A	c 2143	0	96	0.224	6.0	0x0	VIFx	26.7	125.0	st2
Fam/Din/Foy-B	c 2143	0	96	0.206	6.0	0x0	VIFx	34.7	130.0	st2
Kitchen/Nook-A	c 1440	0	65	0.246	6.0	0x0	VIFx	18.4	120.0	st2
Kitchen/Nook-B	c 1440	0	65	0.209	6.0	0x0	VIFx	33.0	130.0	st2
Laundry	c 1246	0	56	0.247	5.0	0x0	VIFx	17.6	120.0	st2
Living	c 3545	0	159	0.205	7.0	0x0	VIFx	35.6	130.0	st1
M Bath	c 883	0	40	0.232	4.0	0x0	VIFx	26.4	120.0	st1
M Bed	c 4188	0	188	0.211	8.0	0x0	VIFx	36.2	125.0	st1
M WC	c 45	0	2	0.223	4.0	0x0	VIFx	27.7	125.0	st1
M WIC Ext	c 320	0	14	0.205	4.0	0x0	VIFx	35.8	130.0	st1
M WIC Int	c 76	0	3	0.230	4.0	0x0	VIFx	28.0	120.0	st1

### Supply Trunk Detail Table

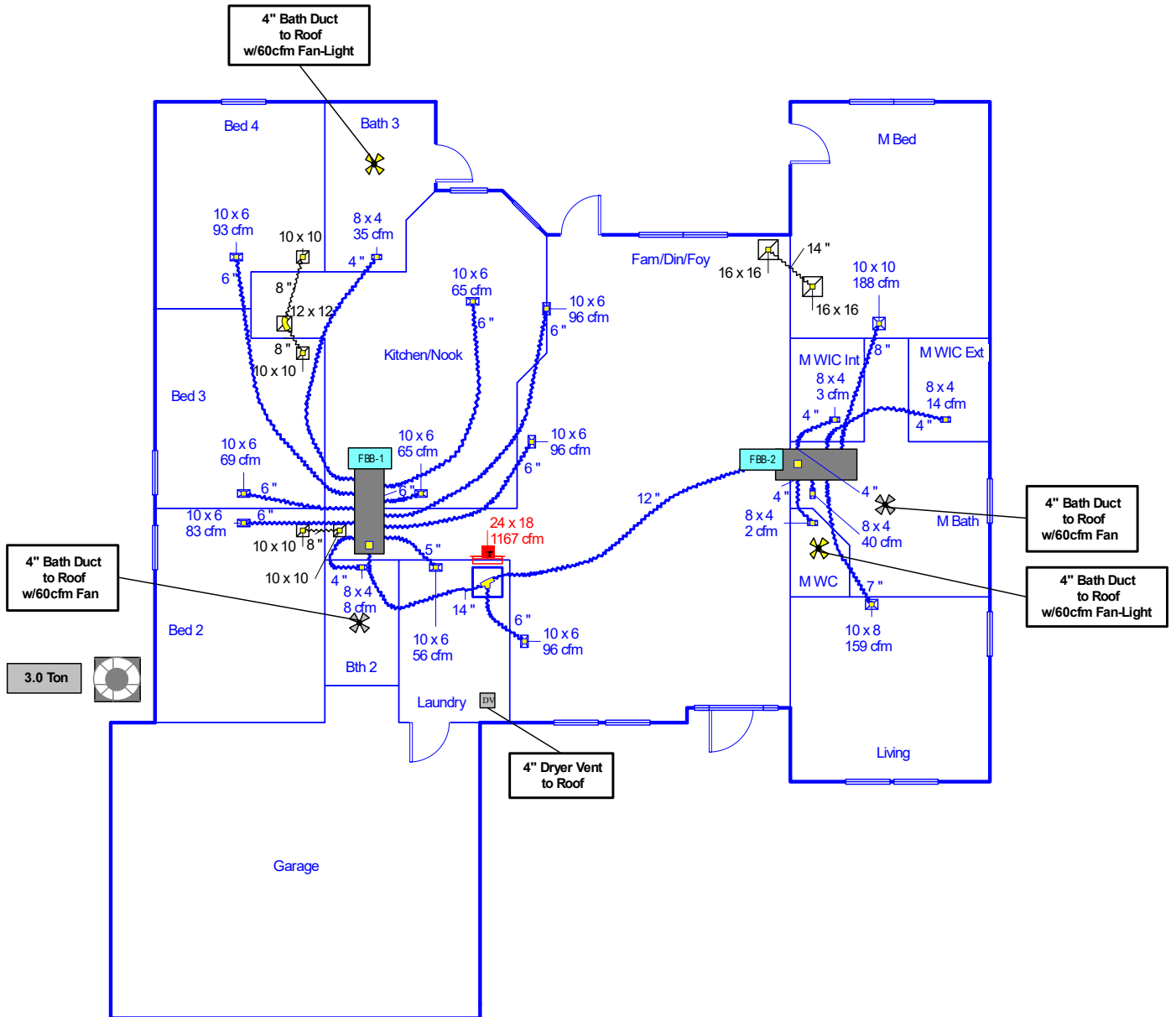
Name	Trunk Type	Htg (cfm)	Clg (cfm)	Design FR	Veloc (fpm)	Diam (in)	H x W (in)	Duct Material	Trunk
st1	PeakAVF	0	406	0.205	517	12.0	0 x 0	VinIFlx	
st2	PeakAVF	0	665	0.199	622	14.0	0 x 0	VinIFlx	

## Return Branch Detail Table

Name	Grille Size (in)	Htg (cfm)	Clg (cfm)	TEL (ft)	Design FR	Veloc (fpm)	Diam (in)	H x W (in)	Stud/Joist Opening (in)	Duct Matl	Trunk
rb1	0x0	0	1167	0	0	0	0	0x 0		VIFx	



Main



**Job #: Lot 23 2265 C-LHG-NW**  
**Performed by RS for:**  
Adams Homes - Preserve at Laurel Lake  
271 SW Bellflower Drive  
Lake City, FL

**Strada Services**  
531 Codisco Way  
Sanford, FL 32771  
Phone: 877-906-1113 License: CAC043953  
StradaServices.com

Scale: 1 : 131  
Page 1  
Right-Suite® Universal 2025  
25.0.01 RSU60693  
2026-Apr-20 14:58:09  
...-LHG-NW/Lot 23 2265 C-LHG-NW.rup