

ITEM NO.	PART NO.	QTY.	DESCRIPTION	DWG. NO.
1	810-11430	4	REBAR BOND, #5 X 24" 90°	-
2	-	24	POCKET FORMER	-
3	810-11442	462	REBAR, #5 (3/8") GRADE 60	-
4	-	-	-	-
5	-	-	-	-
6	810-11443	584.5	REBAR, #5 (3/8") SIDE 90°	187748
7	187748	4	INTERNAL LIFTING ASSEMBLY, 3/8" X 5" X 5" X 12"	187748
8	183544	2	WELD PLATE, 4" X 4"	183544
9	810-11440	1	WIRE MESH, 11'-5" X 20'-0" DS-35	-

REBAR CUT LIST
ITEM QTY LENGTH
3.1 2 135"
3.2 2 135"
3.3 2 135"
3.4 2 135"
3.5 2 135"
3.6 2 135"
3.7 2 135"
3.8 2 135"

Const. Typ: 18
 Occupancy: 1
 Allow. Floor Load: 180 psf D.C.
 Manufacturer: MF 72 D-9577
 Model No.: 4180214
 Plan No.: FibreBond
 Approval Date: FibreBond
 Manufacturer's name or address or approval or derivation or deviations from the requirements of applicable State Laws.



APPROVED BY
 THESE PRINTS COMPLY WITH THE
 FIBREBOND MANUFACTURED BUILDING
 ACT AND SUBSEQUENT CODES AND
 ALL REQUIRED COMPONENTS SHALL
 COMPLY WITH 88-72

WELD PLATE
 DETAIL
 FBR193544
 NOT TO SCALE

CASTING DETAIL
 NOT TO SCALE

CASTING DETAIL
 NOT TO SCALE

CASTING DETAIL
 NOT TO SCALE

CASTING DETAIL
 NOT TO SCALE

CASTING DETAIL
 NOT TO SCALE

CASTING DETAIL
 NOT TO SCALE

CASTING DETAIL
 NOT TO SCALE

CASTING DETAIL
 NOT TO SCALE

CASTING DETAIL
 NOT TO SCALE

CASTING DETAIL
 NOT TO SCALE

CASTING DETAIL
 NOT TO SCALE

CASTING DETAIL
 NOT TO SCALE

CASTING DETAIL
 NOT TO SCALE

CASTING DETAIL
 NOT TO SCALE

CASTING DETAIL
 NOT TO SCALE

CASTING DETAIL
 NOT TO SCALE

CASTING DETAIL
 NOT TO SCALE

CASTING DETAIL
 NOT TO SCALE

CASTING DETAIL
 NOT TO SCALE

CASTING DETAIL
 NOT TO SCALE

CASTING DETAIL
 NOT TO SCALE

CASTING DETAIL
 NOT TO SCALE

CASTING DETAIL
 NOT TO SCALE

CASTING DETAIL
 NOT TO SCALE

CASTING DETAIL
 NOT TO SCALE

CASTING DETAIL
 NOT TO SCALE

CASTING DETAIL
 NOT TO SCALE

CASTING DETAIL
 NOT TO SCALE

CASTING DETAIL
 NOT TO SCALE

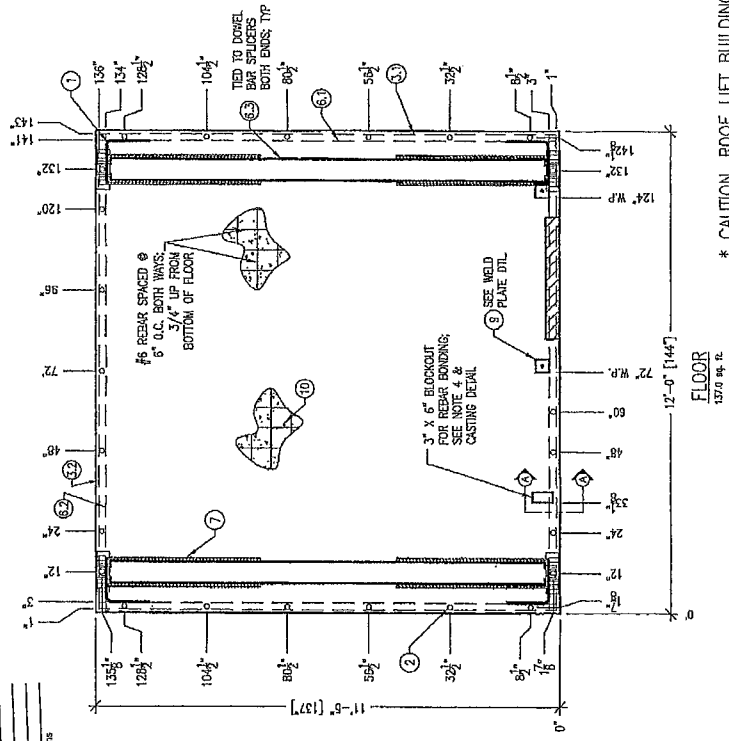
CASTING DETAIL
 NOT TO SCALE

CASTING DETAIL
 NOT TO SCALE

CASTING DETAIL
 NOT TO SCALE

CASTING DETAIL
 NOT TO SCALE

CASTING DETAIL
 NOT TO SCALE



ITEM NO.	QTY	DESCRIPTION	UNIT	QTY
1	1	REBAR BEND, #5 X 24" 90°		
2	2	POCKET FORMER		
3	2	REBAR, #3 (3/8") GRADE 60		
4	2	REBAR, #4 (1/2") GRADE 60		
5	2	REBAR, #5 (3/4") GRADE 60		
6	2	INTERNAL LIFTING ASSEMBLY, 3/8" X 5" X 5" X 12"		
7	1	WELD PLATE, 4" X 4"		
8	1	WIRE MESH, 11'-8" X 20'-0" BS-16		
9	1			
10	1			

REBAR QTY LIST	REBAR QTY LIST
ITEM	QTY
3-1	2
3-2	2
6-1	2
6-2	2
6-3	2

These prints comply with the Florida Manufactured Building and Equipment Code and all applicable codes and regulations shall apply.

APPROVED BY

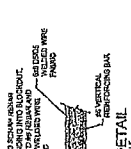
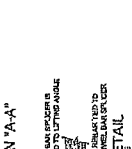
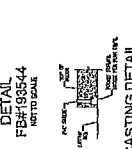
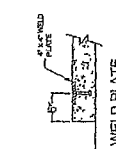
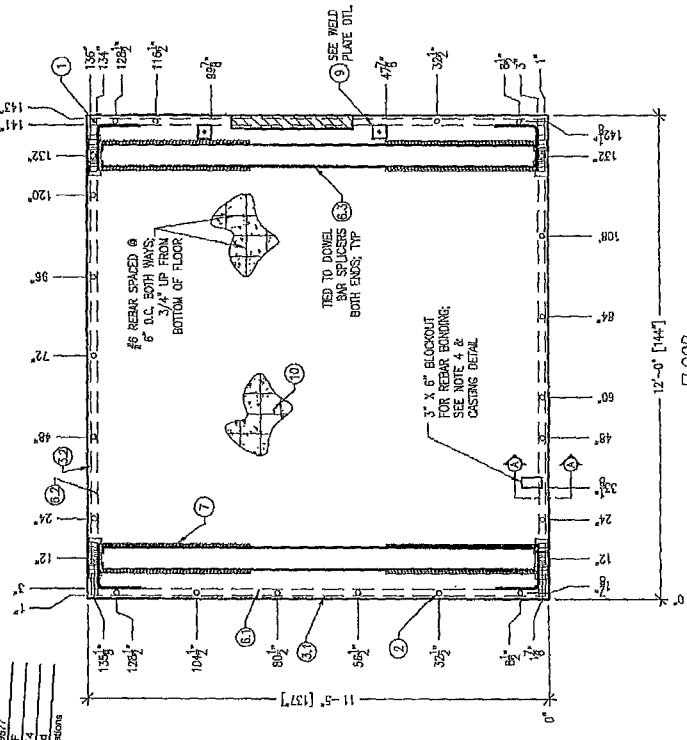
NIA INC.

Allow Floor Load: 250 PSF

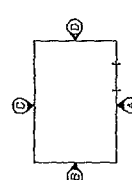
Approval Date: 7/25/2014

Manufacturer: Fibrebond

Approval of this document does not constitute an endorsement or approval from the requirements of applicable State Laws.



- NOTES:
1. REBAR AT FLOOR, SEE MISC. DETAIL SHEET.
 2. ALL REBAR GAUGE AS TYPICAL. SEE MISC. DETAIL SHEET FOR REBAR SIZE & SPACING LENGTHS.
 3. DIAGONAL DIMENSION = USE 3/4\"
 4. REBAR AROUND PERIMETER TO BE TIED AT EACH CROSSOVER. REMAINDER TO BE TIED AT EVERY 4TH CROSSOVER. APPROX. 2'-0\"
 5. PREPARE FLOOR FOR TILE TO CONCRETE.



ELEVATION KEY



* CAUTION ROOF LIFT BUILDING ONLY *

1300 DAVENPORT DRIVE MINNEN, LA. 71055
 ph. (800) 834-2814 www.fibrebond.com

AT&T MOBILITY
 STRUCTURAL LAYOUT
 FLOOR PANEL

DATE: 7/25/14
 TIME: 10:00 AM
 DRAWN BY: JRB
 CHECKED BY: JRB
 SCALE: 1/8\"/>

3/8\"/>

11-5\"/>

FIBREBOND

193544

197748

193544

193544

193544

193544

193544

193544

193544

193544

193544

193544

193544

193544

193544

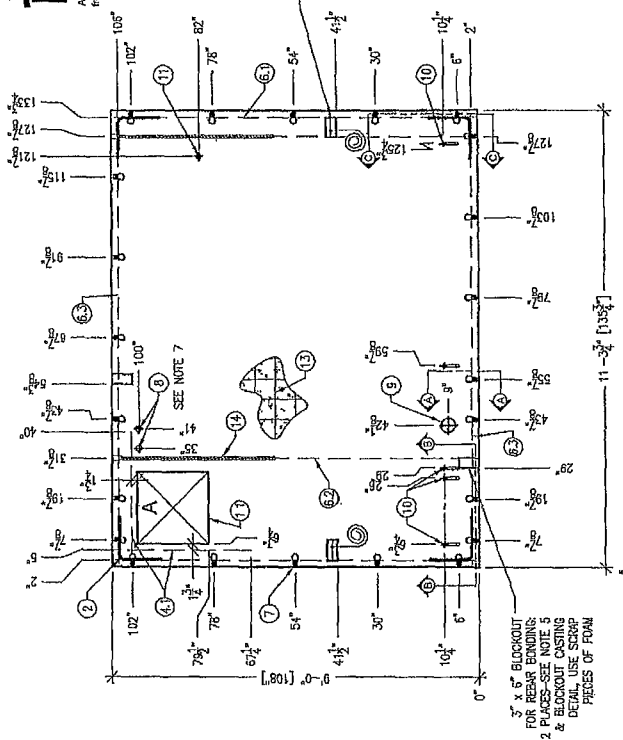
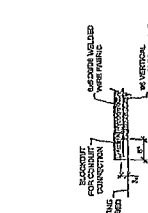
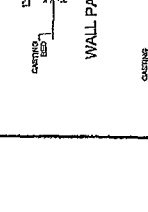
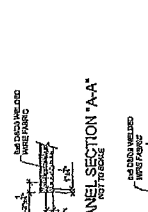
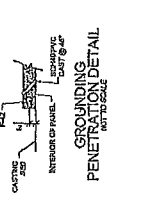
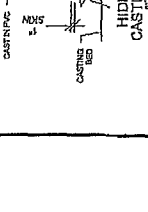
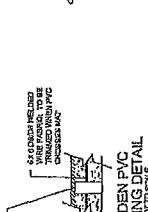
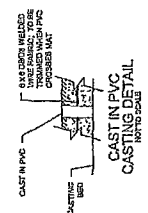
193544

193544

ITEM NO.	QTY	DESCRIPTION	DWG. NO.
1	1	EPS FOAM INSULATION SEE BUILDING COVER SHEET	
2	4	REBAR #4 24 X 24 90	
3	1	REBAR #4 172" GRADE 60 - @ MIN. DEPTH	
4	5.0	REBAR #6 3/4" GRADE 60	
5	5.0	REBAR #6 3/4" GRADE 60	
6	1	1 1/2" SCH. 40 PVC CAST STRAIGHT THROUGH SEE BUILDING COVER SHEET	
7	1	1 1/2" SCH. 40 PVC CAST STRAIGHT THROUGH	
8	1	1 1/2" SCH. 40 PVC CAST STRAIGHT THROUGH	
9	1	1 1/2" SCH. 40 PVC CAST STRAIGHT THROUGH	
10	1	1 1/2" SCH. 40 PVC CAST STRAIGHT THROUGH	
11	1	1 1/2" SCH. 40 PVC CAST STRAIGHT THROUGH	
12	1	1 1/2" SCH. 40 PVC CAST STRAIGHT THROUGH	
13	1	1 1/2" SCH. 40 PVC CAST STRAIGHT THROUGH	
14	2	SPACER, 4" X 4" DOWEL DR-08	

ITEM	QTY	LENGTH	WIDTH
4.1	1	36"	21"
6.1	2	102"	
6.2	2	102"	
6.3	2	102"	

ITEM	QTY	LENGTH	WIDTH
1.1	1	21"	



3" X 5" BLOCKOUT FOR REBAR BONDING; 2 PLACES - SEE NOTE 5 & BLOCKOUT CASTING DETAIL. USE SCRAP PIECES OF FOAM.

3" X 5" BLOCKOUT FOR REBAR BONDING; 2 PLACES - SEE NOTE 5 & BLOCKOUT CASTING DETAIL. USE SCRAP PIECES OF FOAM.

3" X 5" BLOCKOUT FOR REBAR BONDING; 2 PLACES - SEE NOTE 5 & BLOCKOUT CASTING DETAIL. USE SCRAP PIECES OF FOAM.

3" X 5" BLOCKOUT FOR REBAR BONDING; 2 PLACES - SEE NOTE 5 & BLOCKOUT CASTING DETAIL. USE SCRAP PIECES OF FOAM.

3" X 5" BLOCKOUT FOR REBAR BONDING; 2 PLACES - SEE NOTE 5 & BLOCKOUT CASTING DETAIL. USE SCRAP PIECES OF FOAM.

3" X 5" BLOCKOUT FOR REBAR BONDING; 2 PLACES - SEE NOTE 5 & BLOCKOUT CASTING DETAIL. USE SCRAP PIECES OF FOAM.

3" X 5" BLOCKOUT FOR REBAR BONDING; 2 PLACES - SEE NOTE 5 & BLOCKOUT CASTING DETAIL. USE SCRAP PIECES OF FOAM.

3" X 5" BLOCKOUT FOR REBAR BONDING; 2 PLACES - SEE NOTE 5 & BLOCKOUT CASTING DETAIL. USE SCRAP PIECES OF FOAM.

3" X 5" BLOCKOUT FOR REBAR BONDING; 2 PLACES - SEE NOTE 5 & BLOCKOUT CASTING DETAIL. USE SCRAP PIECES OF FOAM.

3" X 5" BLOCKOUT FOR REBAR BONDING; 2 PLACES - SEE NOTE 5 & BLOCKOUT CASTING DETAIL. USE SCRAP PIECES OF FOAM.

3" X 5" BLOCKOUT FOR REBAR BONDING; 2 PLACES - SEE NOTE 5 & BLOCKOUT CASTING DETAIL. USE SCRAP PIECES OF FOAM.

3" X 5" BLOCKOUT FOR REBAR BONDING; 2 PLACES - SEE NOTE 5 & BLOCKOUT CASTING DETAIL. USE SCRAP PIECES OF FOAM.

3" X 5" BLOCKOUT FOR REBAR BONDING; 2 PLACES - SEE NOTE 5 & BLOCKOUT CASTING DETAIL. USE SCRAP PIECES OF FOAM.

3" X 5" BLOCKOUT FOR REBAR BONDING; 2 PLACES - SEE NOTE 5 & BLOCKOUT CASTING DETAIL. USE SCRAP PIECES OF FOAM.



1500 DUNSPORT DRIVE, MONROE, LA 70501
 PH: 847-282-2574 www.niainc.com

AT&T MOBILITY
 STRUCTURAL LAYOUT
 SIDE PANEL A

DATE: 07/15/15
 DRAWN BY: [Signature]
 CHECKED BY: [Signature]
 APPROVED BY: [Signature]

11'-5" X 12'-0" EQUIPMENT SHELTER
 SIDE PANEL A

DATE: 07/15/15
 DRAWN BY: [Signature]
 CHECKED BY: [Signature]
 APPROVED BY: [Signature]

DATE: 07/15/15
 DRAWN BY: [Signature]
 CHECKED BY: [Signature]
 APPROVED BY: [Signature]

DATE: 07/15/15
 DRAWN BY: [Signature]
 CHECKED BY: [Signature]
 APPROVED BY: [Signature]

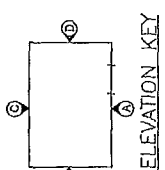
DATE: 07/15/15
 DRAWN BY: [Signature]
 CHECKED BY: [Signature]
 APPROVED BY: [Signature]

DATE: 07/15/15
 DRAWN BY: [Signature]
 CHECKED BY: [Signature]
 APPROVED BY: [Signature]

DATE: 07/15/15
 DRAWN BY: [Signature]
 CHECKED BY: [Signature]
 APPROVED BY: [Signature]

DATE: 07/15/15
 DRAWN BY: [Signature]
 CHECKED BY: [Signature]
 APPROVED BY: [Signature]

- NOTES:
1. TYPICAL 4" WALL PANEL. SEE MISC. DETAIL SHEET.
 2. SIDE PANEL CAST EXTERIOR SIDE UP.
 3. ALL REBAR GRADE 60 TYPICAL. SEE MISC. DETAIL SHEET FOR REBAR SIZE & SPACINGS.
 4. DIAGRAM DIMENSIONS 1/2" EACH CROSS OVER.
 5. SEE BUILDING COVER SHEET FOR WAVEGUIDE/COVERPLATE LOCATION & EXTERIOR FINISH.
 6. ONLY INSTALL ITEM 8 IF THE WAVEGUIDE IS INSTALLED AT THIS LOCATION USING THE CAST IN PVC DETAIL. IF THE WAVEGUIDE ISN'T INSTALLED ON THIS PANEL OR IS UNKNOWN AT CASTING, USE THE HIDDEN PVC DETAIL FOR ITEM 8.
 - 7.



ELEVATION KEY

