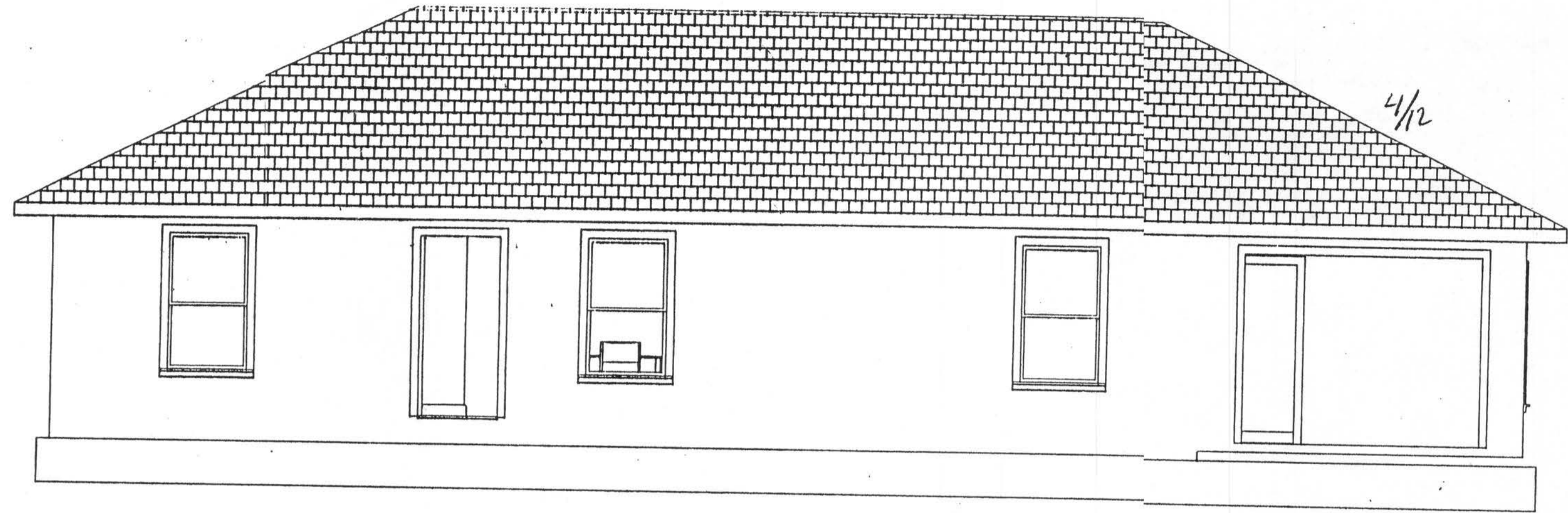
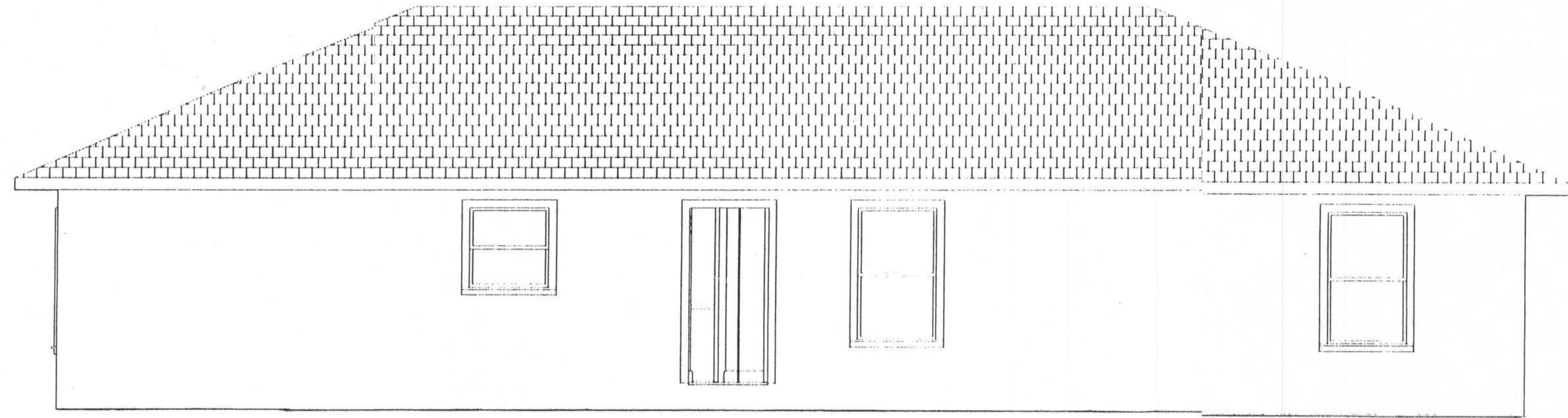


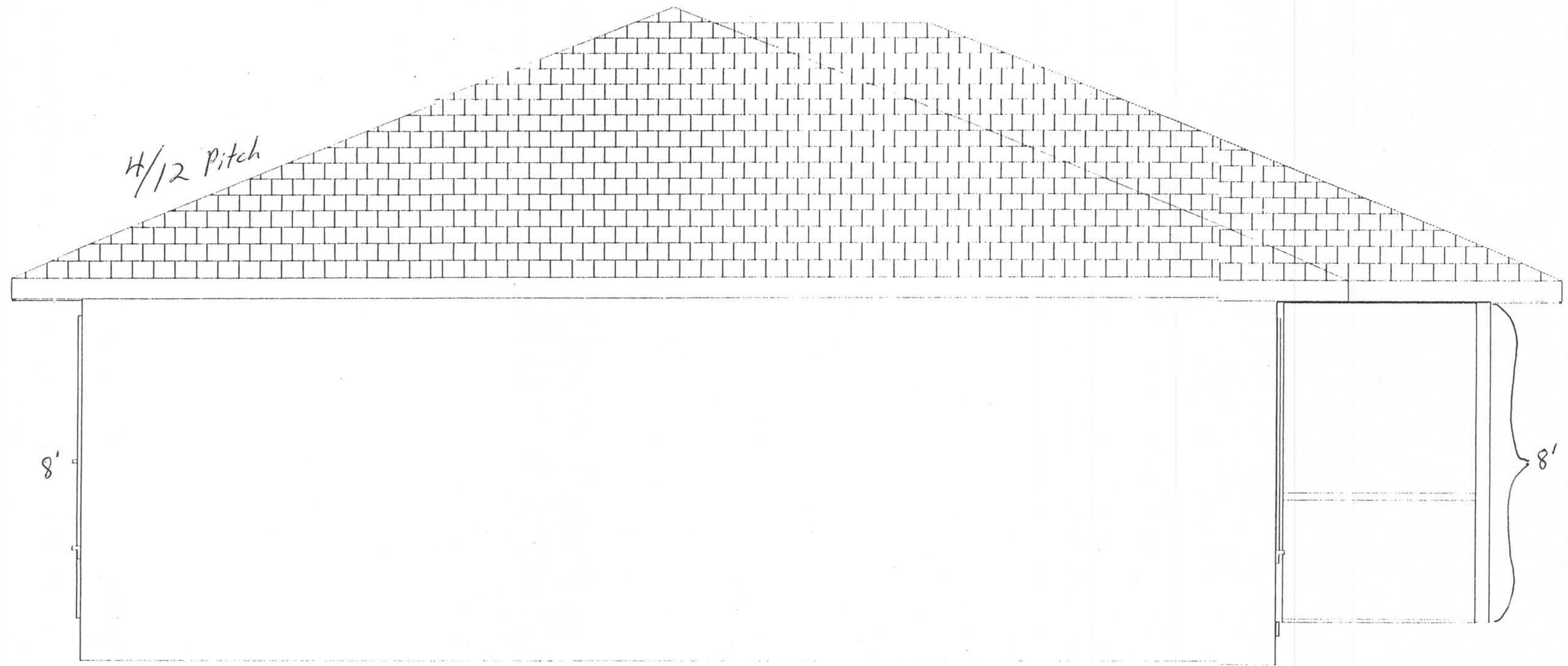
1310
2350
1560



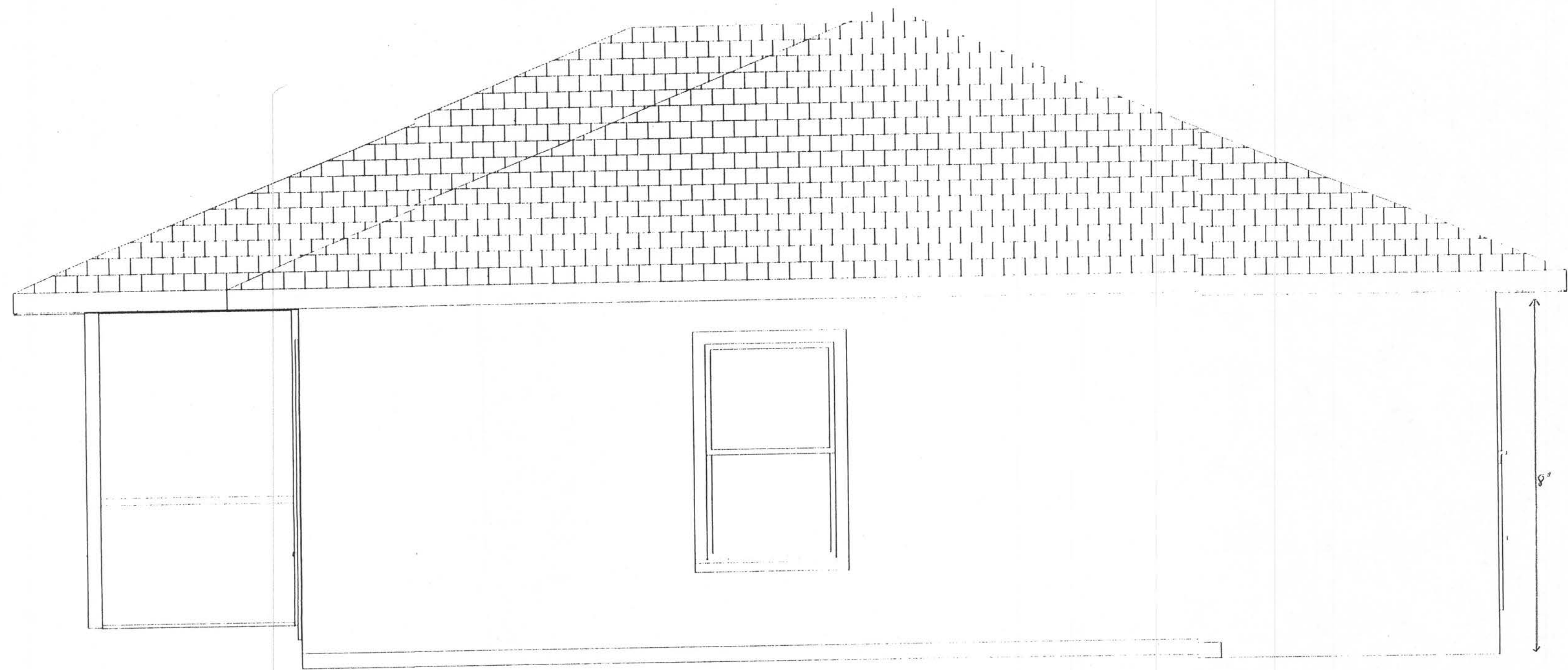
4/12

Q from
Q. 2 ft 0 in
change to 10 ft 0 in

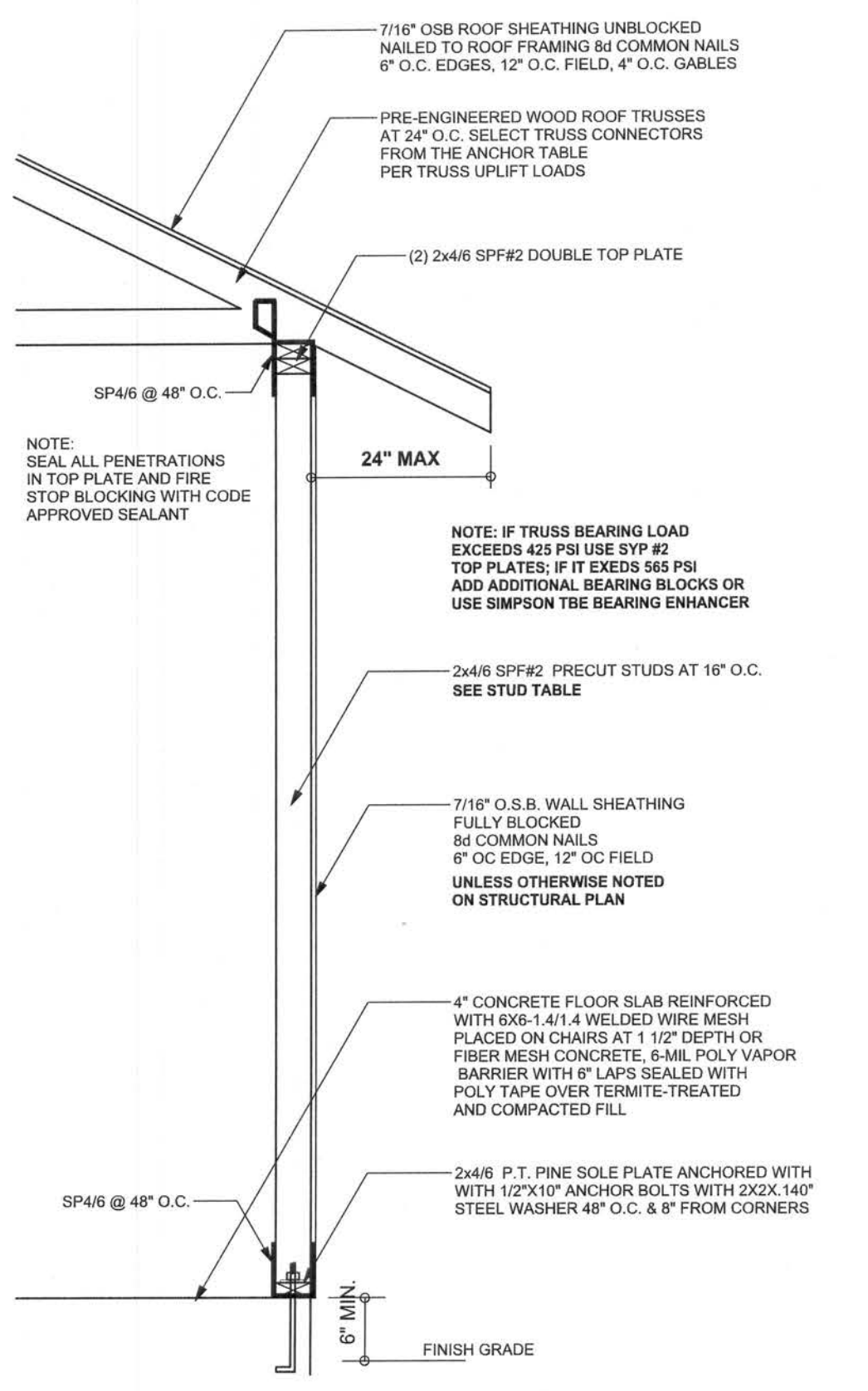




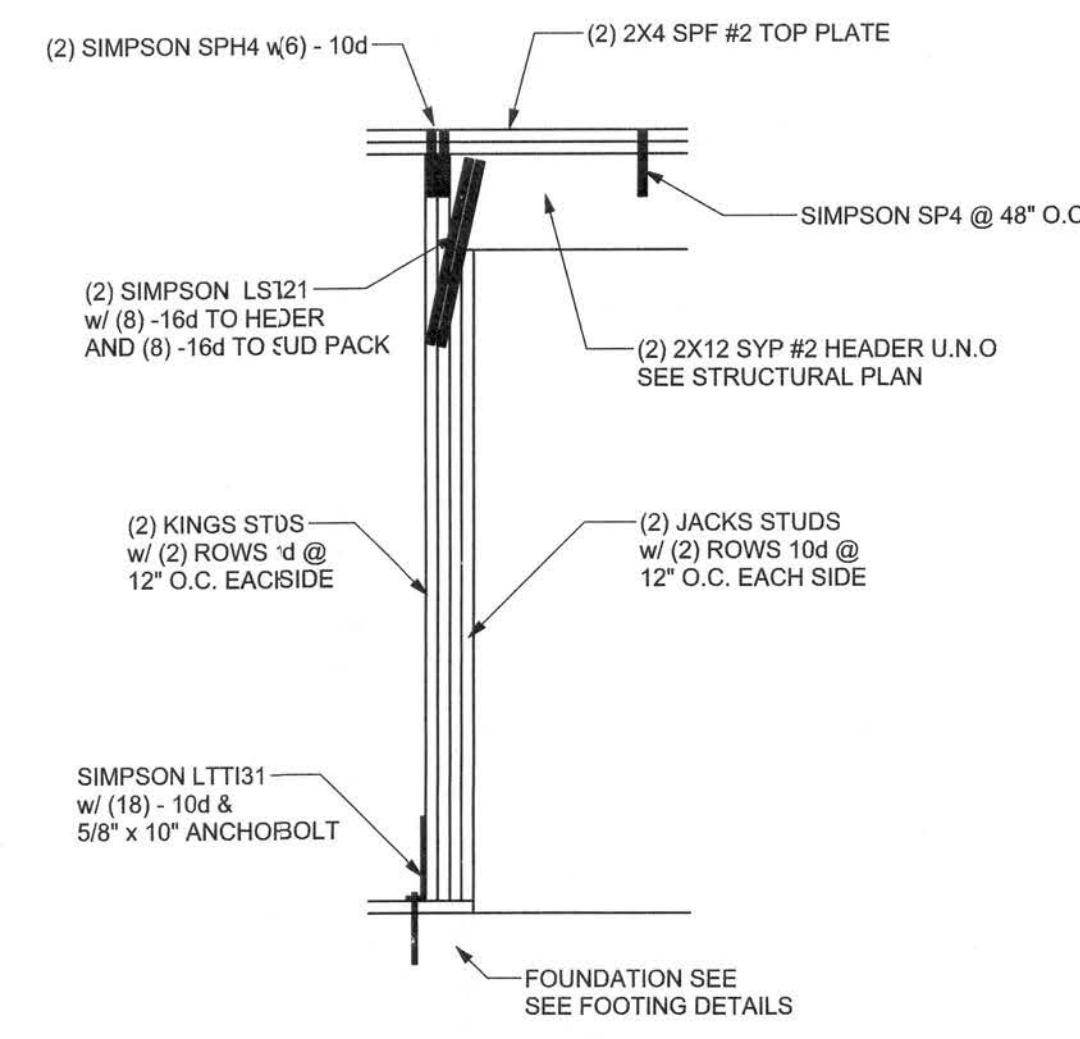
Plan 3 2c



REVISIONS	



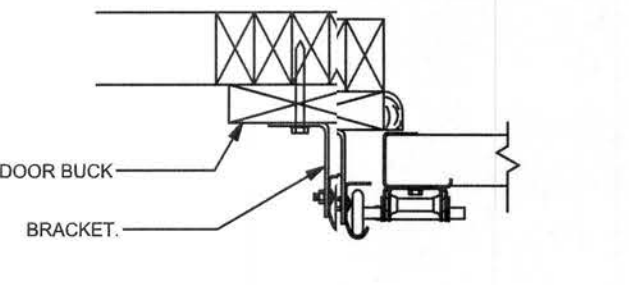
ONE STORY WALL SECTION
SCALE: 3/4" = 1'-0"



TYPICAL GARAGE DOOR HEADER STRAPING DETAIL
SCALE: 1/2" = 1'-0"

2x6 SYP #2 GARAGE DOOR BUCK ATTACHMENT
ATTACH GARAGE DOOR BUCK TO STUD PACK AT EACH SIDE OF DOOR OPENING WITH 3/8"x4" LAG SCREWS w/ 1" WASHER LAG SCREWS MAY BE COUNTERSUNK HORIZONTAL. JAMBS DO NOT TRANSFER LOAD. CENTER LAG SCREWS OR STAGGER 16d NAILS OR (2) ROWS OF 131 x 3 1/4" ON PER TABLE BELOW:

DOOR WIDTH	3/8" x 4" LAG 3	16d STAGGER	(2) ROWS OF 131 x 3 1/4" GN
8' - 10'	24" O.C.	5" O.C.	6" O.C.
11' - 15'	18" O.C.	4" O.C.	4" O.C.
16' - 18'	16" O.C.	3" O.C.	3" O.C.



GARAGE DOOR BUCK INSTALLATION DETAIL
SCALE: N.T.S.

GRADE & SPECIES TABLE

	Fb (psi)	E (10 ⁶ psi)
2x8 SYP #2	1200	1.6
2x10 SYP #2	1050	1.6
2x12 SYP #2	975	1.6
GLB 24F-V3 SP	2400	1.8
LSL TIMBERSTRAND	1700	1.7
LVL MICROLAM	1600	1.9
PSL PARALAM	2900	2.0

GENERAL NOTES:

TRUSSES: TRUSSES SHALL BE DESIGNED BY A FLORIDA LICENSED ENGINEER IN ACCORDANCE WITH THE FBCR 2004. TRUSS ENGINEERING SHALL INCLUDE TRUSS DESIGN, PLACEMENT PLANS, TEMPORARY AND PERMANENT BRACING DETAILS, TRUSS TO TRUSS CONNECTIONS, AND UPLIFT AND REACTION LOADS FOR ALL BEARING LOCATIONS. TRUSS ENGINEERING IS THE RESPONSIBILITY OF THE TRUSS MANUFACTURER AND SHALL BE SIGNED & SEALED BY THE MANUFACTURER'S DESIGN ENGINEER. IT IS THE BUILDER'S RESPONSIBILITY TO VERIFY THE TRUSS DESIGNER FULLY SATISFIED ALL THE ABOVE REQUIREMENTS AND TO SELECT UPLIFT CONNECTIONS BASED ON TRUSS ENGINEERING UPLIFT AND PROVIDE FOOTINGS FOR INTERIOR BEARING WALLS. BUILDER IS TO FURNISH TRUSS ENGINEERING TO WIND LOAD ENGINEER FOR REVIEW OF TRUSS REACTIONS ON THE BUILDING STRUCTURE. STRAP 2X6 RAFTERS WITH MIN UPLIFT CONNECTION 4x15LB EACH END, 2X8 RAFTERS 700 LB EACH END.

FOUNDATION: CONFIRM THAT THE FOUNDATION DESIGN & SITE CONDITIONS MEET GRAVITY LOAD REQUIREMENTS (ASSUME 1000 PSF BEARING CAPACITY UNLESS VISUAL OBSERVATION OR SOIL TEST PROVES OTHERWISE)

CONCRETE: MINIMUM COMPRESSIVE STRENGTH OF CONCRETE AT 28 DAYS, F_c = 3000 PSI

WELDED WIRE REINFORCED SLAB: 6" x 6" W1.4 x W1.4, F_y = 80ksi, WELDED WIRE REINFORCEMENT FABRIC (W.W.R.) CONFORMING TO ASTM A186, LOCATED IN MIDDLE OF THE SLAB, SUPPORTED WITH APPROVED MATERIALS OR SUPPORTS AT SPACINGS NOT TO EXCEED 3'.

FIBER CONCRETE SLAB: CONCRETE SLABS ON GROUND CONTAINING SYNTHETIC FIBER REINFORCEMENT. FIBER LENGTH 12 INCH TO 2 INCHES. DOSAGE AMOUNTS FROM 0.75 TO 1.5 POUNDS PER CUBIC YARD PER THE MANUFACTURER'S RECOMMENDATIONS. FIBERS TO COMPLY WITH ASTM C 1116. SUPPLIER TO PROVIDE ASTM C 1116 CERTIFICATION OF COMPLIANCE WHEN REQUESTED BY BUILDING OFFICIAL.

CONTROL JOINTS: WHERE SPECIFIED, SAWN CONTROL JOINTS IN SLAB-ON-GRADE SHALL BE CUT IN ACCORDANCE WITH ACI 308. JOINTS SHALL BE CUT WITHIN 12 HOURS OF SLAB PLACEMENT. THE LENGTH / WIDTH RATIOS OF SLAB AREAS SHALL NOT EXCEED 1.5 AND TYPICAL SPACING OF CUTS TO BE 12FT. DO NOT CUT W/M OR REINFORCING STEEL. RECOMMENDED LOCATION OF CONTROL JOINTS IS SUBJECT TO OWNER AND CONTRACTOR'S APPROVAL. THE CONTROL JOINTS ARE NOT INTENDED TO PREVENT CRACKS BUT RATHER TO ENCOURAGE THE SLAB TO CRACK ON A GIVEN LINE.)

REBAR: ASTM A 615, GRADE 60, DEFORMED BARS, F_y = 60 KSI. ALL LAP SPLICES 40" DB (25" FOR #5 BARS); UNO. ALL REINFORCEMENT SHALL BE DETAILED AND PLACED IN ACCORDANCE WITH ACI 315-96, U.N.O.

GLULAM BEAMS: GLULAM BEAM, GLB, 24F-V3 SP, F_b = 2,400 psi, E = 1,800,000 psi. UNO. SUPPLIER MAY SUPPLY AN ALTERNATE BEAM WITH EQUAL PROPERTIES OR MAY SUBMIT THEIR OWN SIZING CALCULATIONS.

ROOF SHEATHING: ALL ROOFS ARE HORIZONTAL DIAPHRAGMS. 7/16" OSB SHEATHING, UNBLOCKED, APPLIED PERPENDICULAR TO FRAMING, OVER A MINIMUM OF 3 FRAMING MEMBERS, WITH PANEL EDGES STAGGERED, FASTENED WITH 8 COMMON NAILS (131), 6" O.C. PANEL EDGES, 12" O.C. INTERMEDIATE MEMBERS, GABLE ENDS AND DIAPHRAGM BOUNDARY, 4" O.C. UNO.

STRUCTURAL CONNECTORS: MANUFACTURERS AND PRODUCT NUMBER FOR CONNECTORS, ANCHORS, AND REINFORCEMENT ARE LISTED FOR EXAMPLE NOT ENDORSEMENT. AN EQUIVALENT DEVICE OF THE SAME OR OTHER MANUFACTURER CAN BE SUBSTITUTED FOR ANY DEVICES LISTED IN THE EXAMPLE TABLES AS LONG AS IT MEETS THE REQUIRED LOAD CAPACITIES. MANUFACTURER'S INSTALLATION INSTRUCTIONS MUST BE FOLLOWED TO ACHIEVE RATED LOADS.

ANCHOR BOLTS: A-307 ANCHOR BOLTS WITH MINIMUM EMBEDMENT AS SPECIFIED IN DRAWINGS BUT NO LESS THAN 7" IN CONCRETE OR REINFORCED CONCRETE BEAM OR 18" IN GROUTED CMU.

WASHERS: WASHERS USED WITH 1/2" BOLTS TO BE 2" x 2" x 3/16"; WITH 5/8" BOLTS TO BE 3" x 3" x 3/16"; WITH 3/4" BOLTS TO BE 3" x 3" x 3/16". UNO.

NAILS: ALL NAILS ARE COMMON NAILS UNLESS OTHERWISE SPECIFIED OR ACCEPTED BY FBC TEST REPORTS AS HAVING EQUAL STRUCTURAL VALUES.

BUILDER'S RESPONSIBILITY

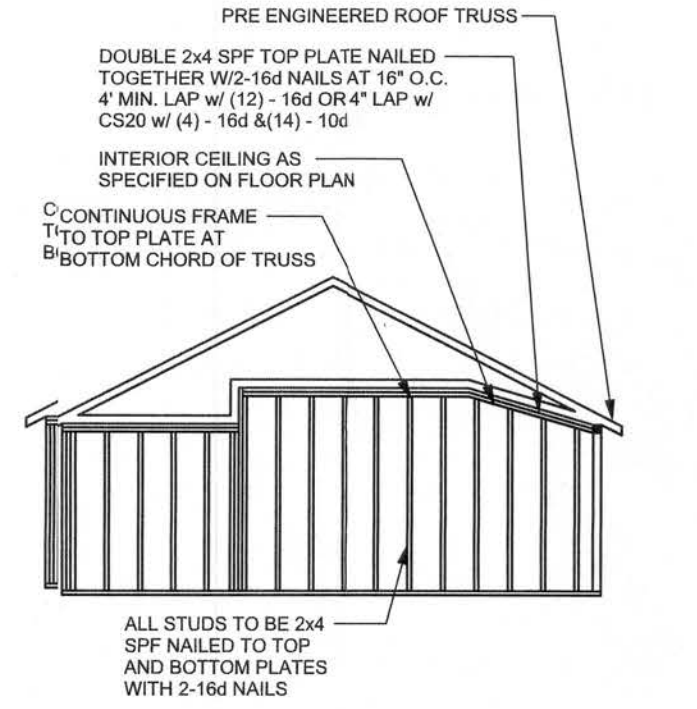
THE BUILDER AND OWNER ARE RESPONSIBLE FOR THE FOLLOWING, WHICH ARE SPECIFICALLY NOT PART OF THE WIND LOAD ENGINEER'S SCOPE OF WORK.

CONFIRM SITE CONDITIONS, FOUNDATION BEARING CAPACITY, GRADE AND BACKFILL HEIGHT, WIND SPEED AND DEBRIS SIZE, AND FLOOD ZONE.

PROVIDE MATERIALS AND CONSTRUCTION TECHNIQUES, WHICH COMPLY WITH FBCR 2004 REQUIREMENTS FOR THE STATED WIND VELOCITY AND DESIGN PRESSURES.

PROVIDE A CONTINUOUS LOAD PATH FROM TRUSSES TO FOUNDATION. IF YOU BELIEVE THE PLAN OMMITS A CONTINUOUS LOAD PATH CONNECTION, CALL THE WIND LOAD ENGINEER IMMEDIATELY.

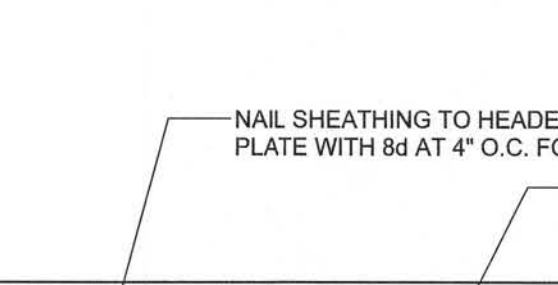
VERIFY THE TRUSS MANUFACTURER'S SEALED ENGINEERING INCLUDES TRUSS DESIGN, PLACEMENT PLANS, TEMPORARY AND PERMANENT BRACING DETAILS, TRUSS-TO-TRUSS CONNECTIONS, AND UPLIFT AND REACTION LOADS FOR ALL BEARING LOCATIONS.



ROOF SYSTEM DESIGN

THE SEAL ON THESE PLANS FOR COMPLIANCE WITH FBCR 2004, SECTION R031.2.1 IS BASED ON REACTIONS, UPLIFTS, AND BEARING LOCATIONS IN TRUSS ENGINEERING SUBMITTED TO THE WIND LOAD ENGINEER. IT IS THE RESPONSIBILITY OF THE BUILDER TO CHECK ALL DETAILS OF THE COMPLETE ROOF SYSTEM DESIGN SUBMITTED BY THE TRUSS MANUFACTURER AND HAVE IT SIGNED, AND SEALED BY A DESIGN PROFESSIONAL FOR CORRECT APPLICATION OF FBC 2001 REQUIRED LOADS AND ANY SPECIAL LOADS. THE BUILDER IS RESPONSIBLE TO REVIEW EACH INDIVIDUAL TRUSS MEMBER AND THE TRUSS ROOF SYSTEM AS A WHOLE AND TO PROVIDE RESTRAINT FOR ANY LATERAL SYSTEMS. THE BUILDER SHOULD USE CARE CHECKING THE ROOF DESIGN BECAUSE THE WIND LOAD ENGINEER IS SPECIFICALLY NOT RESPONSIBLE FOR THE LAYOUT WHICH WAS CREATED BY THE TRUSS MANUFACTURER AND THE TRUSS DESIGNER ALSO DENIES RESPONSIBILITY FOR THE LAYOUT PER NOTES ON THEIR SEALED TRUSS SHEETS.

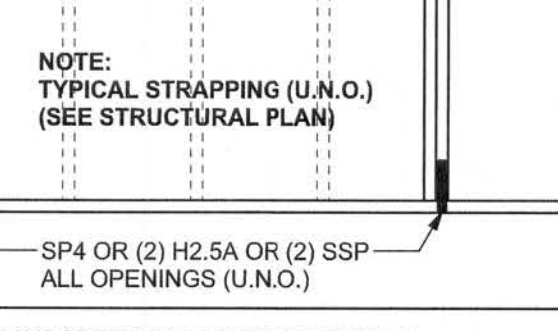
CONTINUOUS FRAME TO CEILING DIAPHRAGM DETAIL
SCALE: N.T.S.



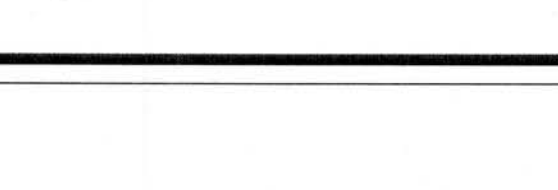
SUPPORTIVE POST TO BEAM DETAIL FOR SINGLE BEAM
SCALE: N.T.S.



SUPPORTIVE CENTER POST TO BEAM DETAIL
SCALE: N.T.S.



TYPICAL HEADER STRAPING DETAIL
SCALE: 1/2" = 1'-0"



MASONRY NOTES:

MASONRY CONSTRUCTION AND MATERIALS FOR THIS PROJECT SHALL CONFORM TO ALL REQUIREMENTS OF "SPECIFICATION FOR MASONRY STRUCTURES" (ACI 530.1/ASCE 6/TMS 602). THE CONTRACTOR AND MASON MUST IMMEDIATELY, BEFORE PROCEEDING, NOTIFY THE ENGINEER OF ANY CONFLICTS BETWEEN ACI 530.1-02 AND THESE DESIGN DRAWINGS. ANY EXCEPTIONS TO ACI 530.1-02 MUST BE APPROVED BY THE ENGINEER IN WRITING.

ACI530.1-02 Section	Specific Requirements
1.4A Compressive strength	8" block bearing walls F _m = 1500 psi
2.1 Mortar	ASTM C 270, Type N, UNO
2.2 Grout	ASTM C 476, admixtures require approval
2.3 CMU standard	ASTM C 90-02, Normal weight, hollow, medium surface finish, 8"x8"x16" running bond and 12"x12" or 16"x16" column block
2.3 Clay brick standard	ASTM C 216-02, Grade SW, Type FBS, 5.5"x2.75"x11.5"
2.4 Reinforcing bars, #3 - #11	ASTM 615, Grade 60, F _y = 60 ksi, Lap splices min 48 bar dia. (30" for #5)
2.4F Coating for corrosion protection	Anchors, sheet metal ties completely embedded in mortar or grout, ASTM A525, Class G60, 0.60 oz/ft ² or 304SS
2.4F Coating for corrosion protection	Joint reinforcement in walls exposed to moisture or wire ties, anchors, sheet metal ties not completely embedded in mortar or grout, ASTM A153, Class B2, 1.50 oz/ft ² or 304SS
3.3.E.2 Pipes, conduits, and accessories	Any not shown on the project drawings require engineering approval.
3.3.E.7 Movement joints	Contractor assumes responsibility for type and location of movement joints if not detailed on project drawings.

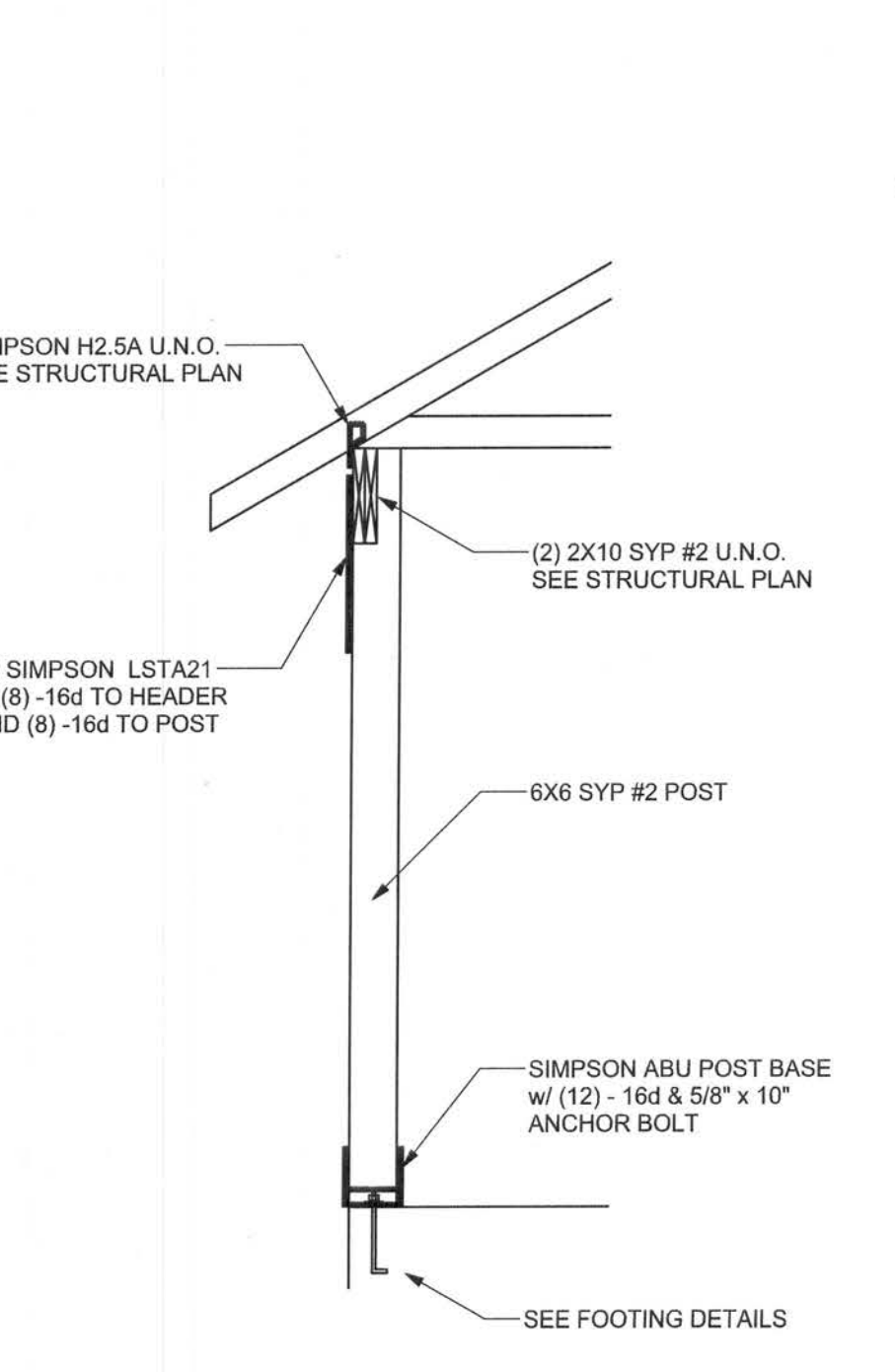
ANCHOR TABLE

UPLIFT LBS. SYP	UPLIFT LBS. SPF	TRUSS CONNECTOR*	TO PLATES	TO RAFTER/TRUSS	TO STUDS
< 420	< 245	H5A	3-8d	3-8d	
< 455	< 265	H4	4-8d	4-8d	
< 360	< 235	H4	4-8d	4-8d	
< 455	< 320	H3	4-8d	4-8d	
< 415	< 365	H2.5	5-8d	5-8d	
< 600	< 635	H2.5A	5-8d	5-8d	
< 950	< 820	H6	8-8d	8-8d	
< 745	< 665	H8	5-10d, 1 1/2"	5-10d, 1 1/2"	
< 1465	< 1050	H14-1	13-8d	12-8d, 1 1/2"	
< 1465	< 1050	H14-2	15-8d	12-8d, 1 1/2"	
< 990	< 850	H10-1	8-8d, 1 1/2"	8-8d, 1 1/2"	
< 780	< 655	H10-2	6-10d	6-10d	
< 1470	< 1285	H16-1	10-10d, 1 1/2"	2-10d, 1 1/2"	
< 1470	< 1285	H16-2	10-10d, 1 1/2"	2-10d, 1 1/2"	
< 1000	< 860	MTS24C	7-10d 1 1/2"	7-10d 1 1/2"	
< 1450	< 1245	HTS24	12-10d 1 1/2"	12-10d 1 1/2"	
< 2900	< 2490	2-HTS24			
< 2050	< 1785	LG72	14-16d	14-16d	
HEAVY GRIDER TIEDOWNS*					
TO FOUNDATION					
< 3965	< 3330	MG7		22-10d	1-5/8" THREADED ROD 12" EMBEDMENT
< 10980	< 6485	HGT-2		16-10d	2-5/8" THREADED ROD 12" EMBEDMENT
< 10530	< 9035	HGT-3		16-10d	2-5/8" THREADED ROD 12" EMBEDMENT
< 9250	< 9250	HGT-4		16-10d	2-5/8" THREADED ROD 12" EMBEDMENT
STUD STRAP CONNECTOR*					
TO STUDS					
< 435	< 435	SSP DOUBLE TOP PLATE	3-10d		4-10d
< 455	< 420	SSP SINGLE GILL PLATE	1-10d		4-10d
< 825	< 825	DSP DOUBLE TOP PLATE	6-10d		8-10d
< 825	< 600	DSP SINGLE GILL PLATE	2-10d		8-10d
< 885	< 760	SP4			6-10d, 1 1/2"
< 1240	< 1065	SPH4			10-10d, 1 1/2"
< 865	< 750	SP6			6-10d, 1 1/2"
< 1240	< 1065	SPH6			10-10d, 1 1/2"
< 1235	< 1165	LSTA18	14-10d		
< 1235	< 1235	LSTA21	16-10d		
< 1030	< 1030	CS20	18-8d		
< 1795	< 1705	CS16	28-8d		
STUD ANCHORS*					
TO STUDS					
TO FOUNDATION					
< 1350	< 1305	LTT19		8-16d	12" AB
< 2310	< 2310	LTT131	16-10d, 1 1/2"		12" AB
< 2775	< 2570	HD2A	2-6" BOLTS		5/8" AB
< 4175	< 3695	HTT16	18-16d		5/8" AB
< 1400	< 1400	PAHD42		16-16d	
< 3335	< 3335	HPAHD22		16-16d	
< 2200	< 2200	ABU44		12-16d	1/2" AB
< 2300	< 2300	ABU66		12-16d	1/2" AB
< 2320	< 2320	ABU88		18-16d	2-5/8" AB

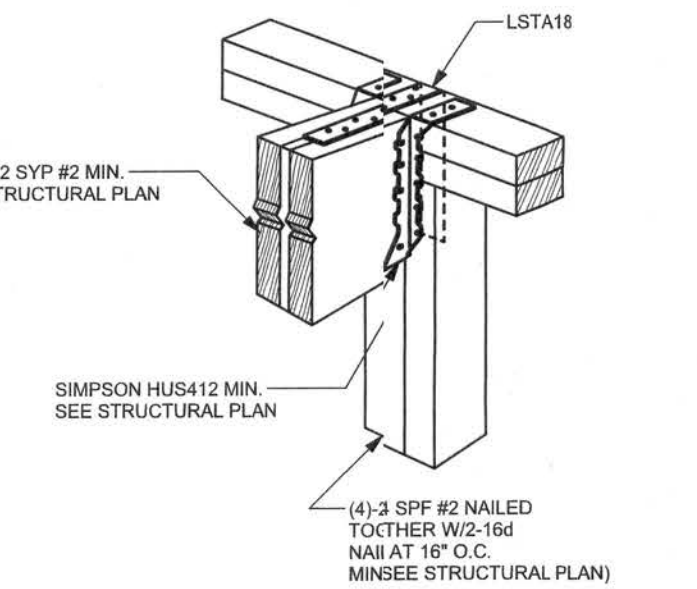
EXTERIOR WALL STUD TABLE FOR SPF #2 STUDS

(1) 2x4 @ 16" OC	TO 11'-9" STUD HEIGHT
(1) 2x4 @ 12" OC	TO 13'-0" STUD HEIGHT
(1) 2x6 @ 16" OC	TO 18'-10" STUD HEIGHT
(1) 2x6 @ 12" OC	TO 20'-0" STUD HEIGHT

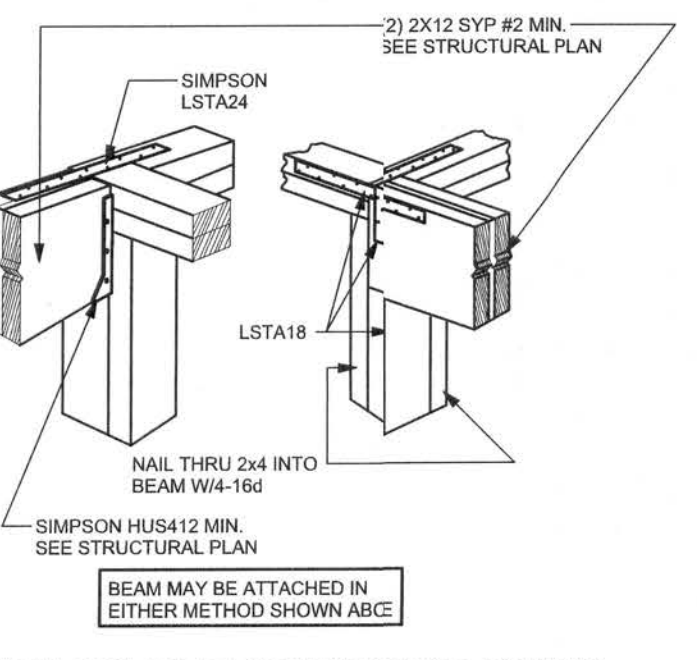
THIS STUD HEIGHT TABLE IS PER WFCM 2001, TABLE 3.208. EXTERIOR LOAD BEARING & NON LOAD BEARING STUD LENGTHS RESISTING INTERIOR ZONE WINDLOADS 110 MPH EXPOSURE B. STUD SPACINGS SHALL BE MULTIPLIED BY END ZONE LOADS. LOCATED WITHIN 4 FEET OF CORNERS FOR END ZONE LOADS. EXAMPLE 16" O.C. x 0.85 = 13.6" O.C.



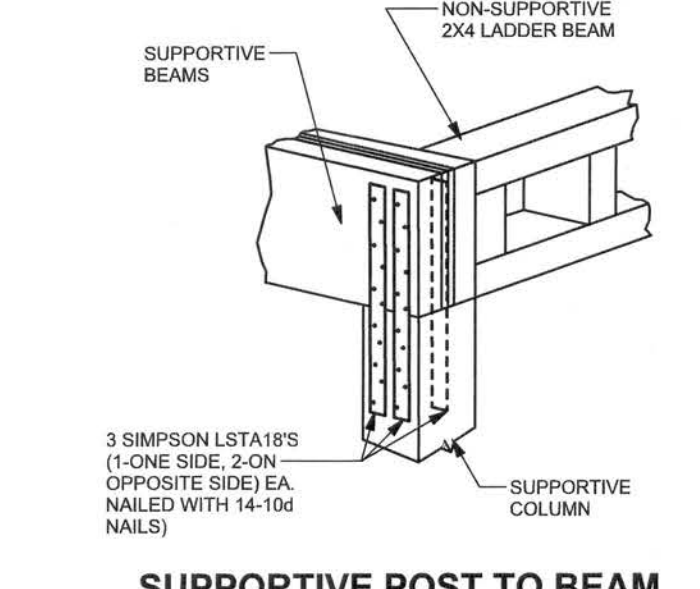
TYPICAL PORCH POST DETAIL
SCALE: 1/2" = 1'-0"



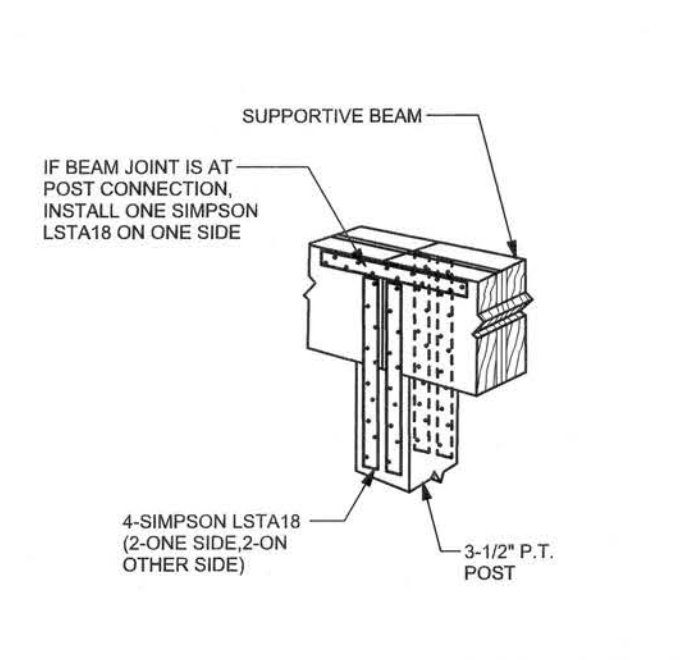
BEAM MID-WALL CONNECTION DETAIL
SCALE: N.T.S.



BEAM CORNER CONNECTION DETAIL
SCALE: N.T.S.



SUPPORTIVE POST TO BEAM DETAIL FOR SINGLE BEAM
SCALE: N.T.S.



SUPPORTIVE CENTER POST TO BEAM DETAIL
SCALE: N.T.S.

DESIGN DATA

WIND LOADS PER FLORIDA BUILDING CODE 2004 RESIDENTIAL, SECTION R301.2.1
(ENCLOSED SIMPLE DIAPHRAGM BUILDINGS WITH FLAT, HIPPED, OR GABLE ROOFS; MEAN ROOF HEIGHT NOT EXCEEDING LEAST HORIZONTAL DIMENSION OR 60 FT; NOT ON UPPER HALF OF HILL OR ESCARPMENT 60FT IN EXP. B, 30FT IN EXP. C AND >10% SLOPE AND UNOBSTRUCTED UPWIND FOR 50x HEIGHT OR 1 MILE WHICHEVER IS LESS.)

BUILDING IS NOT IN THE HIGH VELOCITY HURRICANE ZONE

BUILDING IS NOT IN THE WIND-BORNE DEBRIS REGION

1.) BASIC WIND SPEED = 110 MPH

2.) WIND EXPOSURE = B

3.) WIND IMPORTANCE FACTOR = 1.0

4.) BUILDING CATEGORY = II

5.) ROOF ANGLE = 10-45 DEGREES

6.) MEAN ROOF HEIGHT = <30 FT

7.) INTERNAL PRESSURE COEFFICIENT = N/A (ENCLOSED BUILDING)

8.) COMPONENTS AND CLADDING DESIGN WIND PRESSURES (TABLE R301.2(2))

Zone	Effective Wind Area (ft ²)	10	100
1	19.9 - 21.8	18.1	-21.8
2	19.9 - 25.5	18.1	-21.8
2 Ohg	-	-40.6	-40.6
3	19.9 - 25.5	18.1	-21.8
3 Ohg	-	-68.3	-42.4
4	21.8 - 23.6	18.5	-20.4
5	21.8 - 29.1	18.5	-22.8

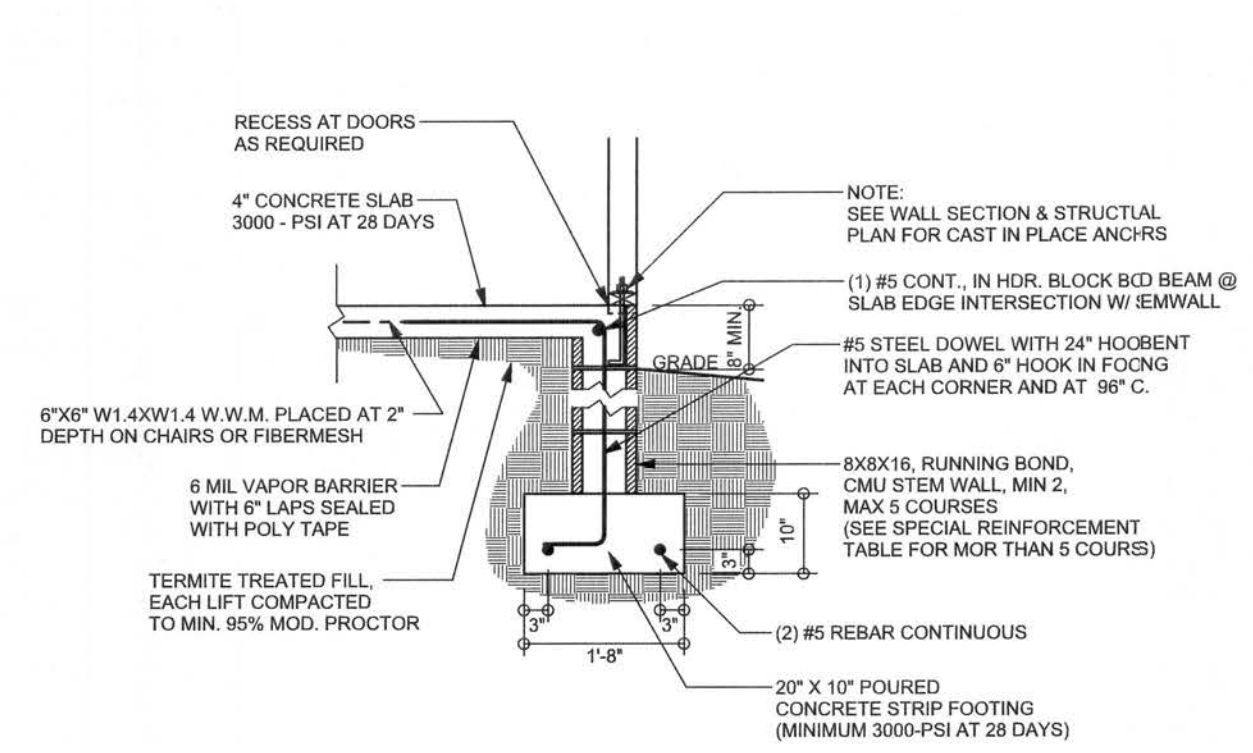
Design Loads	FLOOR 40 PSF (ALL OTHER DWELLING ROOMS)
30 PSF (SLEEPING ROOMS)	
30 PSF (ATTICS WITH STORAGE)	
10 PSF (ATTICS WITHOUT STORAGE, <3:12)	
ROOF	20 PSF (FLAT OR <4:12)
16 PSF (4:12 TO <12:12)	
12 PSF (12:12 AND GREATER)	
STAIRS	40 PSF (ONE & TWO FAMILY DWELLINGS)
SOIL BEARING CAPACITY	1000PSF
NOT IN FLOOD ZONE (BUILDER TO VERIFY)	

WINDLOAD ENGINEER: Mark Dicosway, PE No3915, POB 868, Lake City, FL 32056,386-754-5419

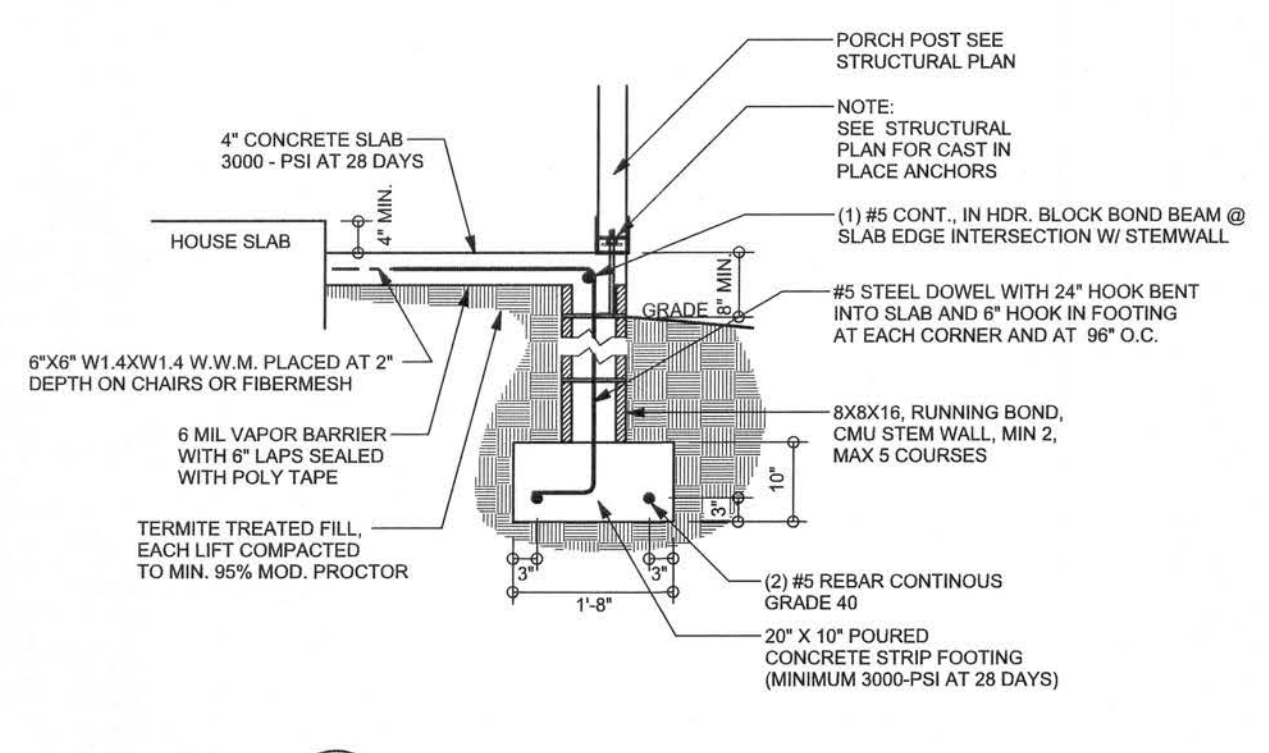
DIMENSIONS: Statist/dimensions supercede scaled dimensions. Refer all questions to Mark Dicosway, P.E. for resolution. Do not proceed without clarification.

COPYRIGHTS AND PROPERTY RIGHTS: Mark Dicosway, P.E. hereby expressly reserves its common law copyrights and property right in these instruments of service. This document is not to be reproduced, altered or copied in any form or manner without first the express

REVISIONS	



F9 S-2 STEM WALL FOOTING
SCALE: 1/2" = 1'-0"

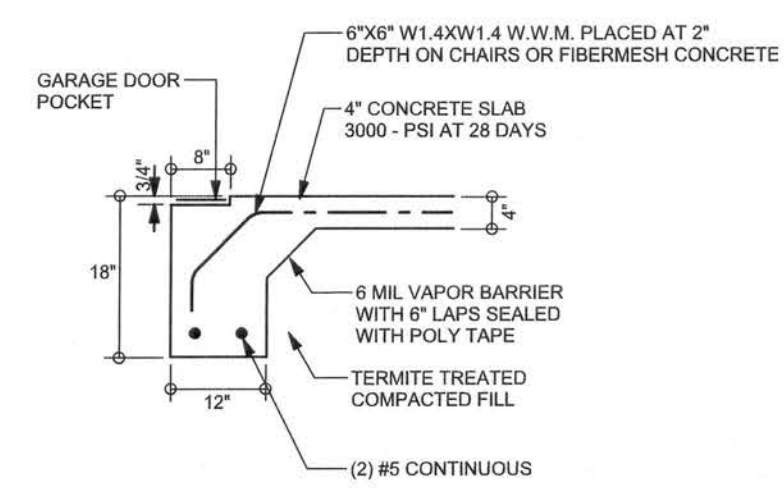


F12 S-2 ALT. STEM WALL PORCH FOOTING
SCALE: 1/2" = 1'-0"

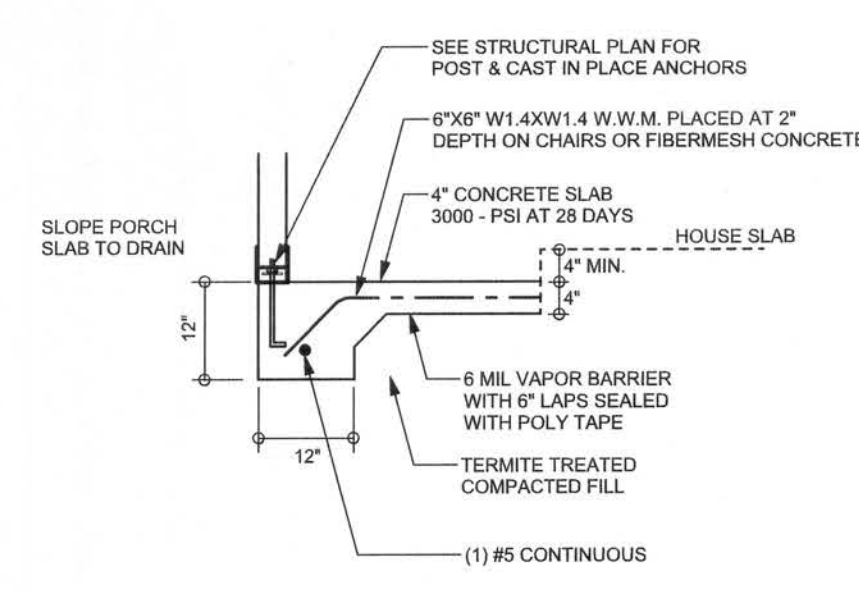
TALL STEM WALL TABLE

The table assumes 60 ksi reinforcing bars with 6" hook in the footing and bent 24" into the reinforced slab at the top. The vertical steel is to be placed toward the tension side of the CMU wall (away from the soil pressure, within 2" of the exterior side of the wall). If the wall is over 8' high, add Durowall ladder reinforcement at 16" O.C. vertically or a horizontal bond beam with 180 continuous at mid height. For higher parts of the wall 12" CMU may be used with reinforcement as shown in the table below.

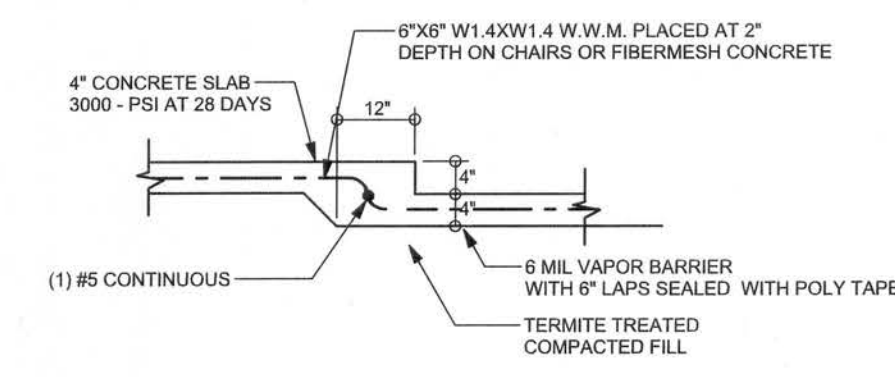
STEM WALL HEIGHT (FEET)	UNBALANCED BACKFILL HEIGHT	VERTICAL REINFORCEMENT FOR 8" CMU STEM WALL (INCHES O.C.)			VERTICAL REINFORCEMENT FOR 12" CMU STEM WALL (INCHES O.C.)		
		#5	#7	#8	#5	#7	#8
3.3	3.0	96	96	96	96	96	96
4.0	3.7	96	96	96	96	96	96
4.7	4.3	88	96	96	96	96	96
5.3	5.0	56	96	96	96	96	96
6.0	5.7	40	80	96	80	96	96
6.7	6.3	32	56	80	56	96	96
7.3	7.0	24	40	56	40	80	96
8.0	7.7	16	32	48	32	64	80
8.7	8.3	8	24	32	24	48	64
9.3	9.0	8	16	24	16	40	48



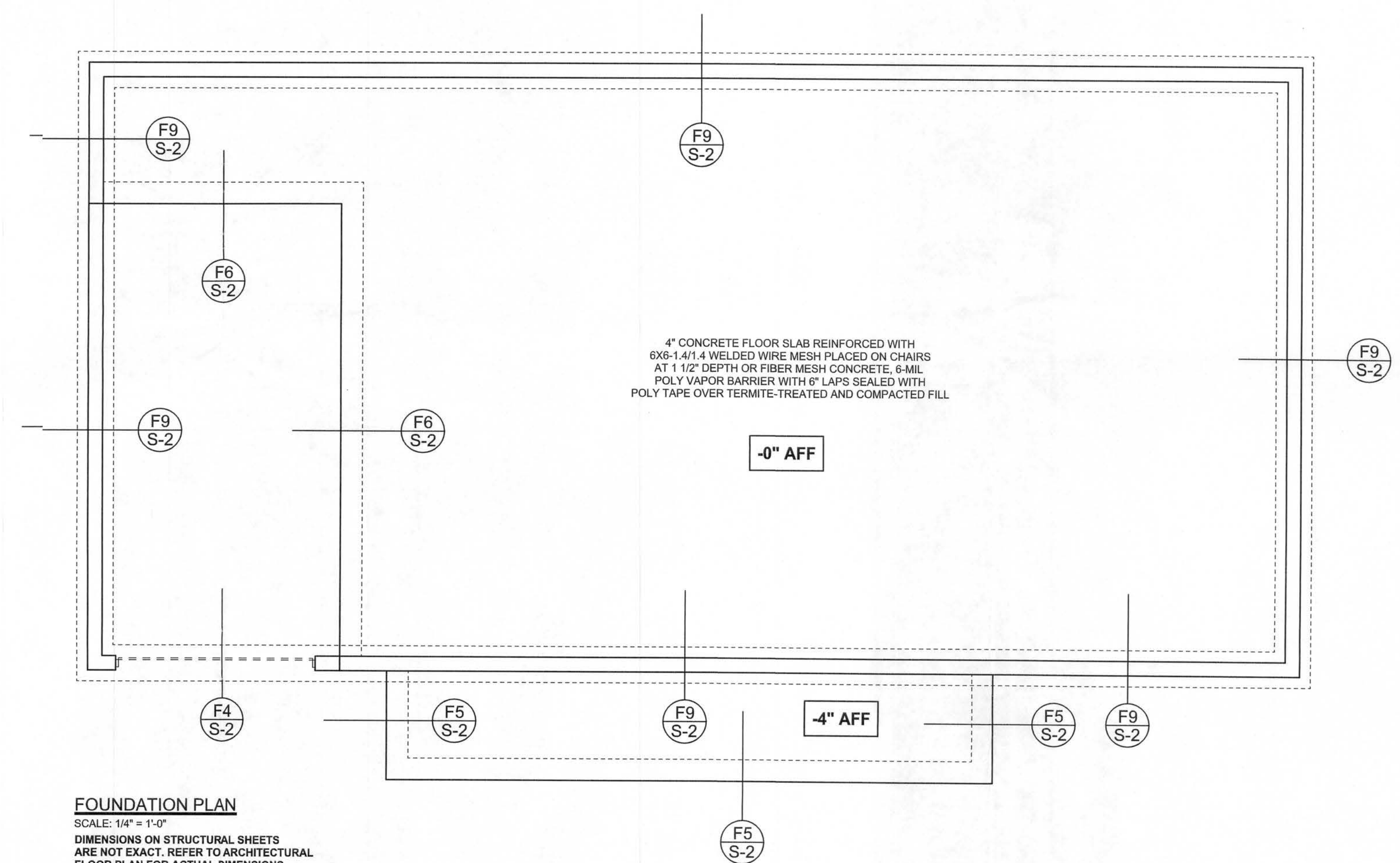
F4 S-2 GARAGE DOOR FOOTING
SCALE: 1/2" = 1'-0"



F5 S-2 PORCH FOOTING
SCALE: 1/2" = 1'-0"



F6 S-2 TYPICAL NON-BEARING STEP FOOTING
SCALE: 1/2" = 1'-0"



FOUNDATION PLAN
SCALE: 1/4" = 1'-0"
DIMENSIONS ON STRUCTURAL SHEETS ARE NOT EXACT. REFER TO ARCHITECTURAL FLOOR PLAN FOR ACTUAL DIMENSIONS

UNLOAD ENGINEER: Mark Disoway, P.E. No. 53915, P.O. Box 868, Lake City, FL 32056, 386-754-5419

DIMENSIONS:
Stated dimensions supersede scaled dimensions. Refer all questions to Mark Disoway, P.E. for resolution. Do not proceed without clarification.

COPYRIGHTS AND PROPERTY RIGHTS:
Mark Disoway, P.E. hereby expressly reserves its common law copyrights and property right in these instruments of service. This document is not to be reproduced, altered or copied in any form or manner without first the express written permission and consent of Mark Disoway.

CERTIFICATION: I hereby certify that I have examined the plan, and that the applicable portions of the plan, relating to wind engineering comply with section R301.2.1, Florida building code residential 2004, to the best of my knowledge.

LIMITATION: This design is valid for one building, at specified location.

MARK DISOWAY
P.E. 53915
Mark Disoway
07APR06
SEAL

Jeffrey Hill, Inc.
House

ADDRESS:
Columbia County, Florida

Mark Disoway P.E.
P.O. Box 868
Lake City, Florida 32056
Phone: (386) 754 - 5419
Fax: (386) 269 - 4871

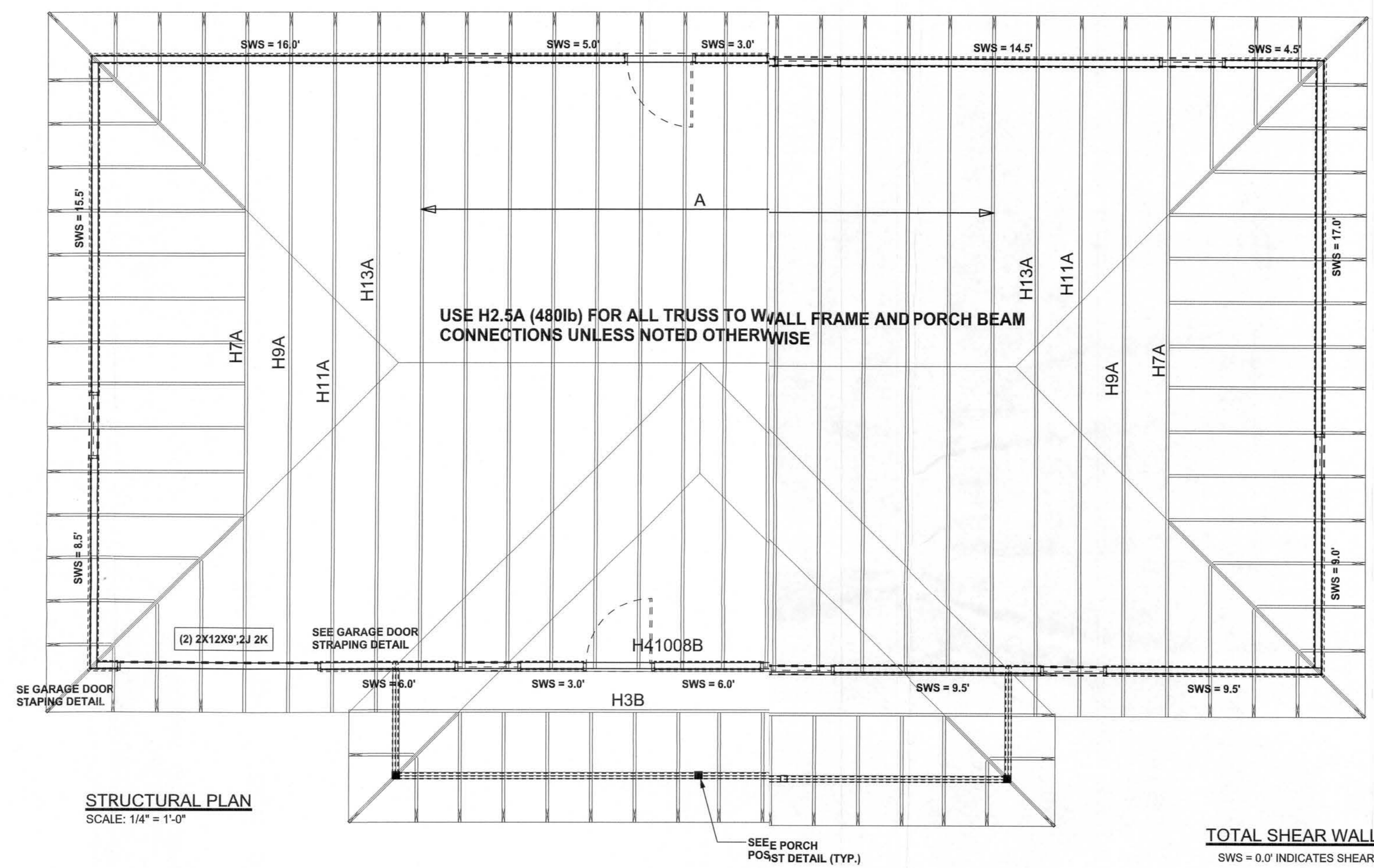
PRINTED DATE:
April 07, 2006

DRAWN BY: David Disoway CHECKED BY:

FINALS DATE:
07 / Apr / 06

JOB NUMBER:
604043
DRAWING NUMBER
S-2
OF 3 SHEETS

REVISIONS	



STRUCTURAL PLAN
SCALE: 1/4" = 1'-0"

TOTAL SHEAR WALL SEGMENTS
SWS = 0.0' INDICATES SHEAR WALL SEGMENTS

	REQUIRED	ACTUAL
TRANSVERSE	31.8'	50.0'
LONGITUDINAL	29.6'	77.0'

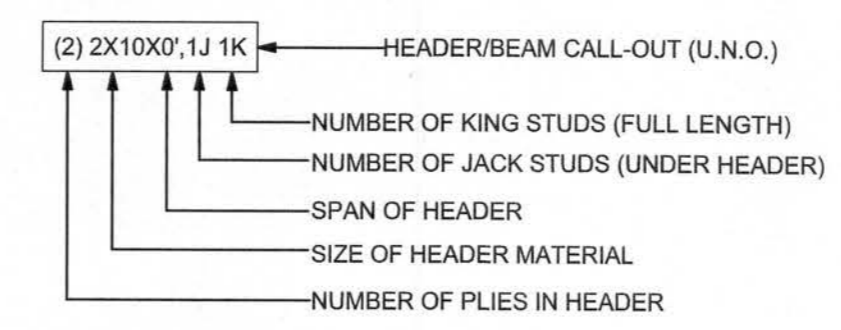
STRUCTURAL PLAN NOTES

- SN-1 ALL LOAD BEARING FRAME WALL & PORCH HEADERS SHALL BE A MINIMUM OF (2) 2X10 SYP #2 (U.N.O.)
- SN-2 ALL LOAD BEARING FRAME WALL HEADERS SHALL HAVE (1) JACK STUD & (1) KING STUD EACH SIDE (U.N.O.)
- SN-3 DIMENSIONS ON STRUCTURAL SHEETS ARE NOT EXACT. REFER TO ARCHITECTURAL FLOOR PLAN FOR ACTUAL DIMENSIONS
- SN-4 PERMANENT TRUSS BRACING IS TO BE INSTALLED AT LOCATIONS AS SHOWN ON THE SEALED TRUSS DRAWINGS. LATERAL BRACING IS TO BE RESTRAINED PER BCSI-1-03, BCSI-B1, BCSI-B2, & BCSI-B3. BCSI-B1, BCSI-B2, & BCSI-B3 ARE FURNISHED BY THE TRUSS SUPPLIER, WITH THE SEALED TRUSS PACKAGE

WALL LEGEND

SWS = 0.0'	1ST FLOOR EXTERIOR WALL WITH 7/16" O.S.B. WALL SHEATHING FULLY BLOCKED 8d COMMON NAILS 6" O.C. EDGE, 12" O.C. FIELD (U.N.O.)
SWS = 0.0'	2ND FLOOR EXTERIOR WALL WITH 7/16" O.S.B. WALL SHEATHING FULLY BLOCKED 8d COMMON NAILS 6" O.C. EDGE, 12" O.C. FIELD (U.N.O.)
IBW	1ST FLOOR INTERIOR BEARING WALLS SEE DETAILS ON SHEET S-1
IBW	2ND FLOOR INTERIOR BEARING WALLS SEE DETAILS ON SHEET S-1

HEADER LEGEND



WINDLOAD ENGINEER: Mark Disosway,
P.E. No. 53915, P.O. Box 868, Lake City, FL
32056 386-754-5419

DIMENSIONS:
Stair dimensions supersede scaled dimensions. Refer all questions to Mark Disosway, P.E. for resolution. Do not proceed without clarification.

COPYRIGHTS AND PROPERTY RIGHTS:
Mark Disosway, P.E. hereby expressly reserves all common law copyrights and property right in these instruments of service. This document is not to be reproduced, altered or copied in any form or manner without first the express written permission and consent of Mark Disosway.

CERTIFICATION: I hereby certify that I have examined this plan, and that the applicable portions of the plan, relating to wind engineering comply with section R301 Z.1, Florida building code residential 2004, to the best of my knowledge.

LIMITATION: This design is valid for one building, at specified location.

MARK DISOSWAY
P.E. 53915
Mark Disosway
07 APR 06
SEAL

Jeffrey Hill, P.E.

House

ADDRESS:
Columbia County, Florida

Mark Disosway P.E.
P.O. Box 868
Lake City, Florida 32056
Phone: (386) 754 - 5419
fax: (386) 269 - 4871

PRINTED DATE:
April 07, 2006

DRWN BY: Dave Disosway CHECKED BY:

FINLS DATE:
07 Apr / 06

JOB NUMBER:
604043

DRAWING NUMBER
S-3
OF 3 SHEETS

CONNECTIONS, WALL, & HEADER DESIGN IS BASED ON REACTIONS & UPLIFTS FROM TRUSS ENGINEERING FURNISHED BY BUILDER, ANDERSON TRUSS
JOB #6-148