

FORT MYERS - 075
 SIZE: 8'x16'
 DEPTH: 4'-0"
 VOLUME: 2850 GAL
 AREA: 85 SQ FEET
 PERIMETER: 900 LB
 WEIGHT: 600 LB

ISLANDER - 600
 SIZE: 17'x18'
 DEPTH: 4'-0"
 VOLUME: 4900 GAL
 AREA: 179 SQ FEET
 PERIMETER: 52 LIN FEET
 WEIGHT: 900 LB

LAKESIDE - 085
 SIZE: 10'x18'
 DEPTH: 4'-4"
 VOLUME: 3200 GAL
 AREA: 119 SQ FEET
 PERIMETER: 40 LIN FEET
 WEIGHT: 700 LB

PARADISE - 090
 SIZE: 11'x16'
 DEPTH: 3'-8", 4'-7"
 VOLUME: 2950 GAL
 AREA: 108 SQ FEET
 PERIMETER: 40 LIN FEET
 WEIGHT: 700 LB

SEA ISLE - 650
 SIZE: 12'x18'
 DEPTH: 3'-0"
 VOLUME: 5200 GAL
 AREA: 173 SQ FEET
 PERIMETER: 53 LIN FEET
 WEIGHT: 1000 LB

CRYSTAL SPRINGS - 105
 SIZE: 12'x17'
 DEPTH: 4'-4", 5'
 VOLUME: 3900 GAL
 AREA: 132 SQ FEET
 PERIMETER: 45 LIN FEET
 WEIGHT: 1000 LB

PALM BEACH - 050
 SIZE: 11'x22'
 DEPTH: 3'-8", 5'
 VOLUME: 4800 GAL
 AREA: 129 SQ FEET
 PERIMETER: 51 LIN FEET
 WEIGHT: 1000 LB

GULF BREEZE - 700
 SIZE: 12'x20'
 DEPTH: 4'-0"
 VOLUME: 5000 GAL
 AREA: 111 SQ FEET
 PERIMETER: 59 LIN FEET
 WEIGHT: 1000 LB

MALIBU - 300
 SIZE: 12'x23'
 DEPTH: 3'-8"
 VOLUME: 5025 GAL
 AREA: 183 SQ FEET
 PERIMETER: 59 LIN FEET
 WEIGHT: 1050 LB

BAYSIDE - 220
 SIZE: 11'x23'
 DEPTH: 3'-6", 5'-4"
 VOLUME: 5100 GAL
 AREA: 181 SQ FEET
 PERIMETER: 57 LIN FEET
 WEIGHT: 1100 LB

COCOA BEACH - 175
 SIZE: 12'x24'
 DEPTH: 3'-6", 5'-6"
 VOLUME: 6600 GAL
 AREA: 203 SQ FEET
 PERIMETER: 59 LIN FEET
 WEIGHT: 1250 LB

SUNDIAL - 180
 SIZE: 12'x24'
 DEPTH: 3'-6", 4'-7"
 VOLUME: 6600 GAL
 AREA: 203 SQ FEET
 PERIMETER: 59 LIN FEET
 WEIGHT: 1300 LB

KOKOMO - 110
 SIZE: 11'x28'
 DEPTH: 4'-0"
 VOLUME: 6200 GAL
 AREA: 229 SQ FEET
 PERIMETER: 65 LIN FEET
 WEIGHT: 1300 LB

CYBERLANE - 750
 SIZE: 9'x23'
 DEPTH: 4'-8"
 VOLUME: 4240 GAL
 AREA: 199 SQ FEET
 PERIMETER: 55 LIN FEET
 WEIGHT: 1,000 LB

WAIKIKI I - 100
 SIZE: 12'x27'
 DEPTH: 3'-6", 5'-6"
 VOLUME: 8000 GAL
 AREA: 282 SQ FEET
 PERIMETER: 68 LIN FEET
 WEIGHT: 1200 LB

CATALINA - 150
 SIZE: 13'x28'
 DEPTH: 3'-6", 5'-6"
 VOLUME: 8900 GAL
 AREA: 311 SQ FEET
 PERIMETER: 63 LIN FEET
 WEIGHT: 1300 LB

WAIKIKI II - 125
 SIZE: 12'x28'
 DEPTH: 3'-8", 5'-4"
 VOLUME: 8900 GAL
 AREA: 273 SQ FEET
 PERIMETER: 70 LIN FEET
 WEIGHT: 1400 LB

WAIKIKI III - 135
 SIZE: 12'x28'
 DEPTH: 3'-8", 5'-6"
 VOLUME: 8400 GAL
 AREA: 270 SQ FEET
 PERIMETER: 70 LIN FEET
 WEIGHT: 1400 LB

ROMAN - 800
 SIZE: 12'x28'
 DEPTH: 3'-8", 5'
 VOLUME: 7000 GAL
 AREA: 242 SQ FEET
 PERIMETER: 66 LIN FEET
 WEIGHT: 1200 LB

SCOTTSDALE - 200
 SIZE: 12'x31'
 DEPTH: 3'-8", 5'-6"
 VOLUME: 8000 GAL
 AREA: 294 SQ FEET
 PERIMETER: 74 LIN FEET
 WEIGHT: 1400 LB

SEASIDE - 210
 SIZE: 12'x28'
 DEPTH: 3'-8", 6'
 VOLUME: 8000 GAL
 AREA: 242 SQ FEET
 PERIMETER: 74 LIN FEET
 WEIGHT: 1300 LB

HAWAIIAN - 870
 SIZE: 13'x29'
 DEPTH: 3'-6", 5'-6"
 VOLUME: 10,000 GAL
 AREA: 304 SQ FEET
 PERIMETER: 72 LIN FEET
 WEIGHT: 1400 LB

POMPANO BEACH - 375
 SIZE: 14'x30'
 DEPTH: 3'-6", 5'-6"
 VOLUME: 9500 GAL
 AREA: 302 SQ FEET
 PERIMETER: 70 LIN FEET
 WEIGHT: 1400 LB

NEWPORT - 145
 SIZE: 13'x34'
 DEPTH: 4'-0", 5'-0"
 VOLUME: 8500 GAL
 AREA: 312 SQ FEET
 PERIMETER: 100 LIN FEET
 WEIGHT: 1700 LB

DOLPHIN - 350
 SIZE: 13'x34'
 DEPTH: 3'-8", 5'-6"
 VOLUME: 10,000 GAL
 AREA: 382 SQ FEET
 PERIMETER: 83 LIN FEET
 WEIGHT: 1600 LB

MANATEE - 225
 SIZE: 14'x33'
 DEPTH: 3'-6", 5'-10"
 VOLUME: 12,000 GAL
 AREA: 363 SQ FEET
 PERIMETER: 80 LIN FEET
 WEIGHT: 2,100 LB

SAVANNAH - 400
 SIZE: 14'x32'
 DEPTH: 3'-6", 5'-6"
 VOLUME: 11,500 GAL
 AREA: 368 SQ FEET
 PERIMETER: 80 LIN FEET
 WEIGHT: 1600 LB

SAVANNAH DEEP - 450
 SIZE: 14'x33'
 DEPTH: 3'-8", 6'-0"
 VOLUME: 14,000 GAL
 AREA: 369 SQ FEET
 PERIMETER: 80 LIN FEET
 WEIGHT: 2000 LB

MARATHON - 775
 SIZE: 9'x40'
 DEPTH: 4'-8"
 VOLUME: 8500 GAL
 AREA: 340 SQ FEET
 PERIMETER: 97 LIN FEET
 WEIGHT: 1,500 LB

VIGAS - 425
 SIZE: 16'x28'
 DEPTH: 5'-1"
 VOLUME: 10,000 GAL
 AREA: 325 SQ FEET
 PERIMETER: 80 LIN FEET
 WEIGHT: 1500 LB

VENETIAN - 520
 SIZE: 16'x28'
 DEPTH: 5'-4"
 VOLUME: 9,500 GAL
 AREA: 310 SQ FEET
 PERIMETER: 85 LIN FEET
 WEIGHT: 1500 LB

MAJESTIC - 840
 SIZE: 16'x34'
 DEPTH: 3'-8", 5'-6"
 VOLUME: 13,500 GAL
 AREA: 428 SQ FEET
 PERIMETER: 89 LIN FEET
 WEIGHT: 2000 LB

ATLANTIC - 850
 SIZE: 16'x33'
 DEPTH: 3'-8", 6'-0"
 VOLUME: 13,000 GAL
 AREA: 401 SQ FEET
 PERIMETER: 81 LIN FEET
 WEIGHT: 1900 LB

MIRAGE - 530
 SIZE: 16'x40'
 DEPTH: 3'-6", 5'-6"
 VOLUME: 14,050 GAL
 AREA: 475 SQ FEET
 PERIMETER: 100 LIN FEET
 WEIGHT: 2000 LB

OASIS - 550
 SIZE: 16'x40'
 DEPTH: 3'-8", 6'-0"
 VOLUME: 17,950 GAL
 AREA: 475 SQ FEET
 PERIMETER: 98 LIN FEET
 WEIGHT: 2800 LB

PHOENIX - 875
 SIZE: 16'x40'
 DEPTH: 5'-0"
 VOLUME: 14,100 GAL
 AREA: 480 SQ FEET
 PERIMETER: 104 LIN FEET
 WEIGHT: 2000 LB

PACIFIC - 575
 SIZE: 16'x40'
 DEPTH: 5'-1"
 VOLUME: 20,500 GAL
 AREA: 508 SQ FEET
 PERIMETER: 3100 LB
 WEIGHT: 3100 LB

OLYMPUS - 875
 SIZE: 16'x38'
 DEPTH: 3'-6", 5'-6"
 VOLUME: 14,100 GAL
 AREA: 480 SQ FEET
 PERIMETER: 104 LIN FEET
 WEIGHT: 2000 LB

OCEANSIDE - 590
 SIZE: 16'x40'
 DEPTH: 3'-6", 6'-6"
 VOLUME: 22,000 GAL
 AREA: 602 SQ FEET
 PERIMETER: 109 LIN FEET
 WEIGHT: 3400 LB

DALLAS - 540
 SIZE: 16'x42'-8"
 DEPTH: 3'-8", 6'-0"
 VOLUME: 20,500 GAL
 AREA: 580 SQ FEET
 PERIMETER: 110 LIN FEET
 WEIGHT: 3200 LB

NOTES:
 1. DESIGN CONFORMS WITH 1997 STANDARD BUILDING CODE & NATIONAL SPA & POOL INSTITUTE.

MICHAEL A. ROBINSON, P.E. (RUSTY)
STRUCTURAL ENGINEERING, INC.
 INDUSTRIAL, COMMERCIAL & RESIDENTIAL
 821 SHADOW DRIVE
 LAKELAND, FLORIDA 33809
 OFFICE PHONE: 863-815-6541
 FAX LINE: 863-858-9861
 E-MAIL ADDRESS: rusty@earthlink.net

AECC/SAN JUAN POOLS
 BY: AMERICAN ENVIRONMENTAL CONTAINER CORP.
 2302 LASSO LANE
 LAKELAND, FLORIDA 33801
 (841) 666-3202

Date	Checked By	Job No.
12-22-99	MAR	
Title	RESIDENTIAL POOLS	
	1 of 2	

OFFICE COPY

Michael A. Robinson, P.E.
 9/19/02
 STRUCTURAL ENGINEERING, INC.

GENERAL CONSTRUCTION NOTES:

- Pool installation shall be by a qualified and licensed (approved by local building department and San Juan pools) pool contractor. The installation shall conform to all state and local building codes, as well as tenants of any association with jurisdiction.
- Water supply and disposal shall be so arranged that there is no cross connection with domestic service.
- Main drain to have anti-vortex type cover or a grate with a minimum open area of 65 sq. in. or as to local codes, securely fastened in place.
- Pool turnover shall be 12 hours maximum with cartridge filter and properly grounded approved pump (min. 1/2 hp per 50 GPM at 55 TDH.) Pool pump to be above ground with weather protective housing.
- All electric shall conform to N.E.C. No overhead wires shall pass within 10 feet of pool.
- Concrete shall be 2500 psi at 28 days. Pool bottom to be placed in 4" Min. of sand. Conc. Slab to have 6x6, #10/10wmm. Fiberglass conc. may be used in lieu of 6x6 #10/10wmm as allowed by code.
- Hydrostatic pressures: design assumes pool is full at all times, with any required hold downs and reinforcing by others.
- Hydrostatic relief valve not credited for more than 2 feet of the difference of head between pool bottom and floor criteria level, use where code requires.
- Pool shall bear on undisturbed soil, free of peat, muck or other deleterious material of any significant amount.
- Backfill shall have bearing value greater than 600 PSF with vertical angle of repose. Back-fill material must not contain rocks that could damage pool walls. Back-fill shall be installed and compacted in lifts to match water level in pool and not deform pool.
- Steps or ladders shall be provided at each end of pool per code.
- Pool ladders shall be corrosion resistant with non-slip treads. Hand rails and ladders shall have No. 8 solid copper grounds and Solidly imbedded anchors.
- Steps, treads and risers shall conform to local codes when different than that shown.
- Therapy seats, where installed, shall be recessed in to the sides of such pool not more than 20 inches below water level, and in such a manner as to clearly distinguish such underwater obstructions from pool areas in to which persons may dive.
- Swimming pool skimmer(s) shall have deck openings.
- Electrical hook-up of pool equipment, rails, boxes, etc and grounding of deck steel shall be in accordance with the National Electrical Code and all applicable state and local building codes by a licensed electrical contractor.
- Install 12 volt light. When allowed by local code. Higher voltage shall be GFI protected per NEC. At installers option Fiberoptic Lighting may be used.
- If the slope from shallow end to deep end is more than 1:7 a safety rope shall be provided when required.
- Supports and steps shall be properly reinforced and of sufficient structural strength to safely carry all anticipated loads.
- All pipe to be PVC schedule 40 suitable for potable water or to local code.
- Direct suction pipes from the pool shall have Secondary Reliefs.

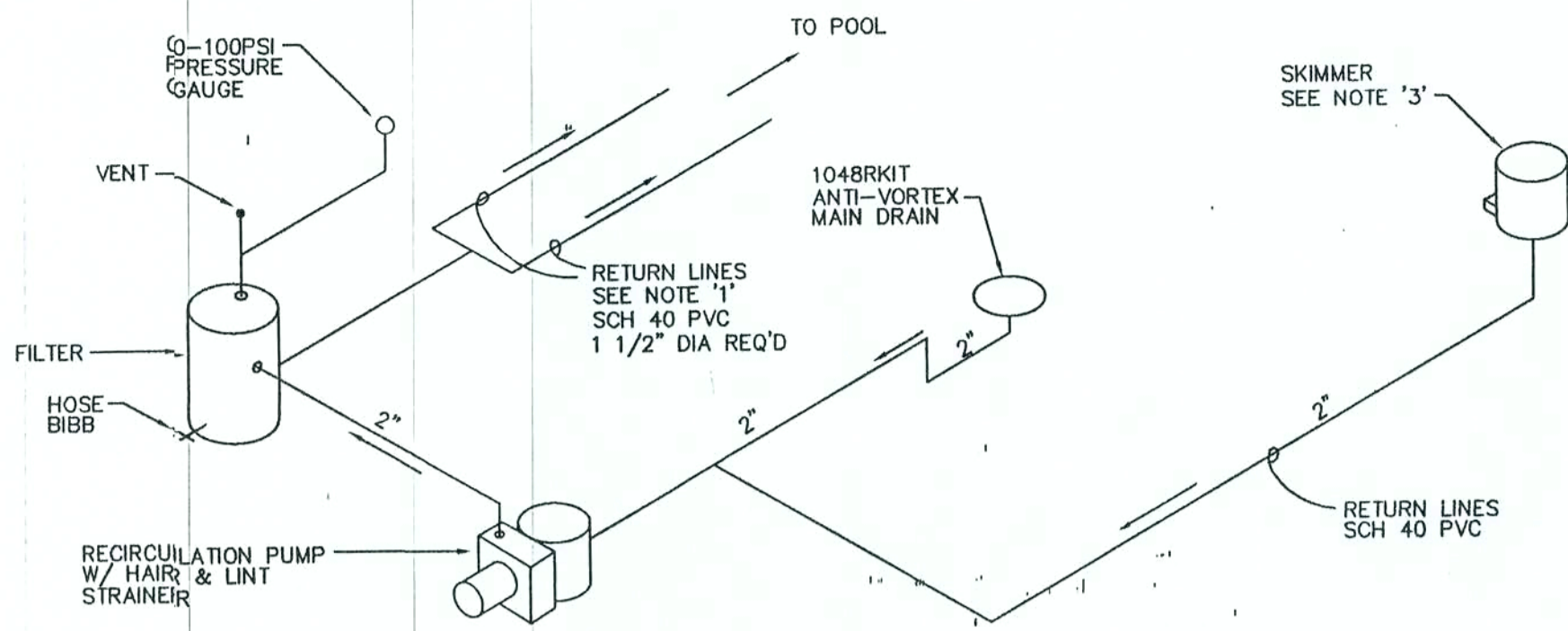
POOL EQUIPMENT AND PROPERTIES

Quantity	Item	Manufacturer
•	Inlet-Return 1 1/2" white cycolac Model SP-1032	Hayward MFG. Co. or Equal.
•	Inlet-Directional Flow white cycolac "Hydro-stream" with 1/2" hole, Model SP-1419-C	Hayward MFG. Co. or Equal.
•	Main Drain Anti-Vortex Model SP-1048-AV or 1035-AV	Hayward MFG. Co. or Equal.
•	Hydrostatic Relief Valve Model SP-1056	Hayward MFG. Co. or Equal.
•	Skimmer Model SP-1076	Hayward MFG. Co. or Equal.
•	Niche Light Assembly PVC SP607 with 1" Conduit connection	Hayward MFG. Co. or Equal.
•	Light Assembly 100 watt, 12 volt with Power Cord	American Products Co. or Equal.

• Quantities Specified at Construction

Typical properties of a REINFORCED FIBERGLASS pool:

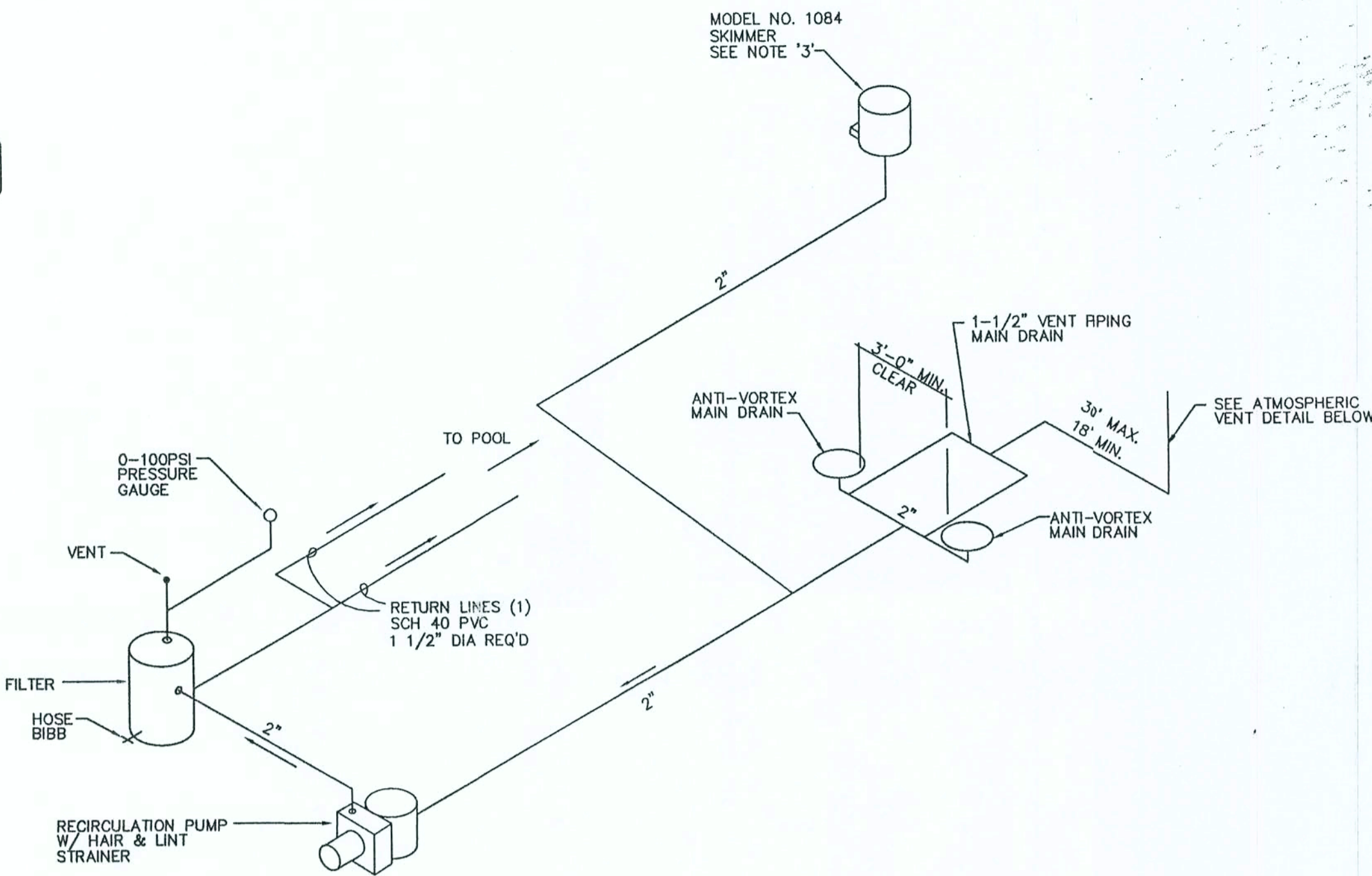
Barcol hardness of 30 mil gel coat	40 - 50
Glass content by weight	27%
Tensile strength, PSI at 77 F	19,500
Tensile elongation	1 - 2%
Flexural strength, PSI at 77 F	23,800 - 27,600
Flexural modulus, PSI x 10 at 77 F	0.72 - 0.77
Izod Impact FT-LBS/inch of notch	5.9
Compressive strength, PSI	25,000 to 38,000
Typical thickness inches	3/8"



1048RKIT MAIN DRAIN OPTION

NOTES:

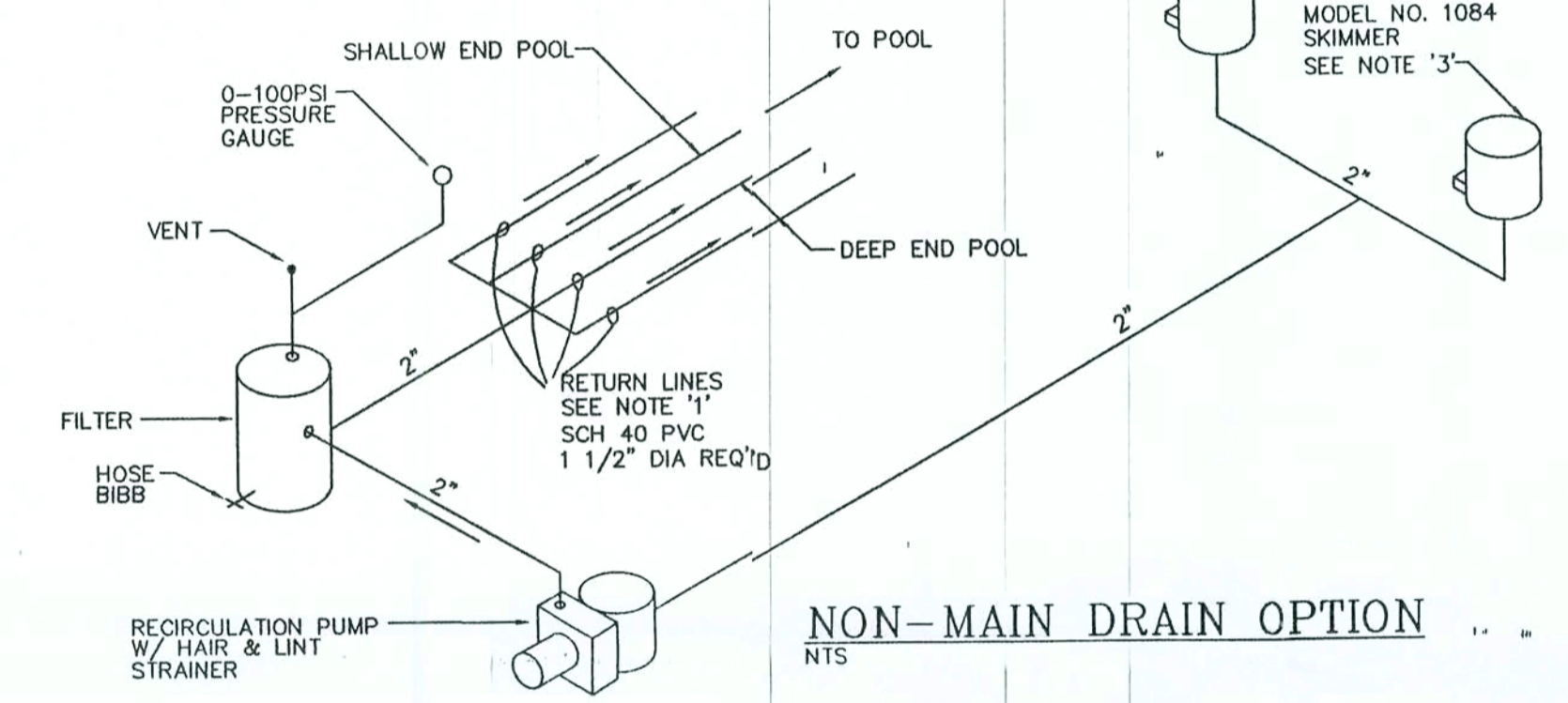
- ONE RETURN LINE REQUIRED FOR POOLS LESS THAN 450 SQ.FT. OF SURFACE AREA. GREATER THAN 450 SQ.FT. OF SURFACE AREA REQUIRES TWO LINES. MINIMUM SEPARATION OF LINES ENTERING POOL SHALL BE 10 FT.
- SUMP LINE (WHEN REQ'D) TO BE 2 SCH. 40 PVC FROM 4 CUBIC FOOT GRAVEL BED BENEATH MAIN DRAIN TO 18" FROM EQUIPMENT.
- TWO SKIMMERS REQUIRED IF POOL AREA GREATER THAN 450 SQ.FT. OF SURFACE AREA.



ATMOSPHERIC VENT OPTION

NOTES:

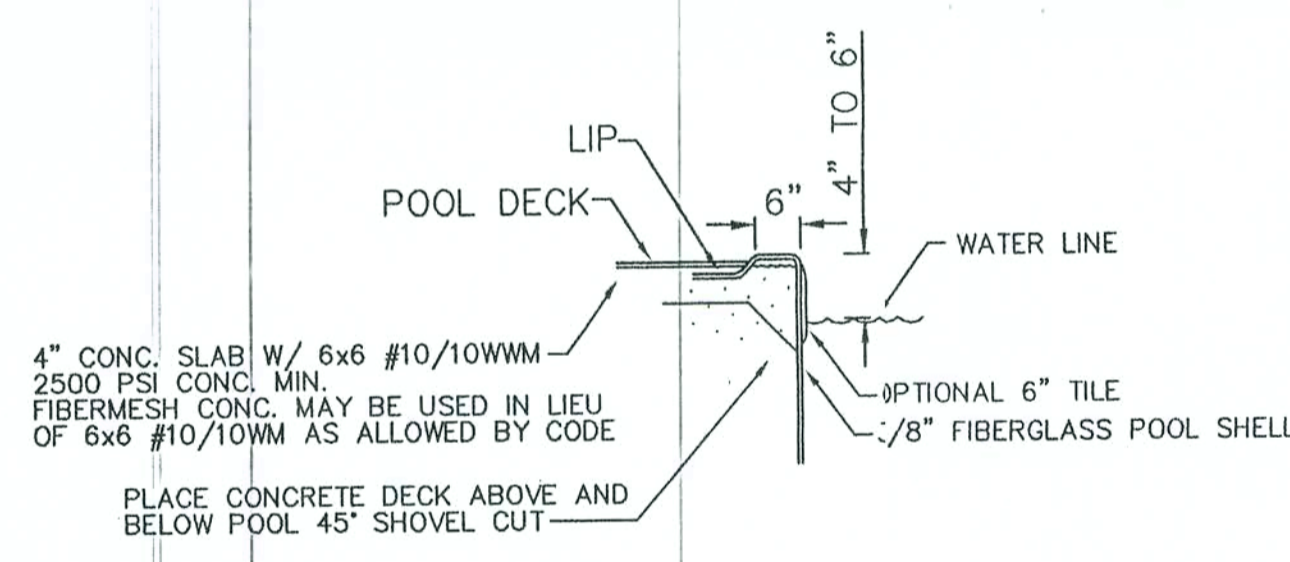
- ONE RETURN LINE REQUIRED FOR POOLS LESS THAN 450 SQ.FT. OF SURFACE AREA. GREATER THAN 450 SQ.FT. OF SURFACE AREA REQUIRES TWO LINES. MINIMUM SEPARATION OF LINES ENTERING POOL SHALL BE 10 FT.
- SUMP LINE (WHEN REQ'D) TO BE 2" SCH. 40 PVC FROM 4 CUBIC FOOT GRAVEL BED BENEATH MAIN DRAIN TO 18" FROM EQUIPMENT.
- TWO SKIMMERS REQUIRED IF POOL AREA GREATER THAN 450 SQ.FT. OF SURFACE AREA.
- TESTED IN COMPLIANCE WITH FLORIDA BUILDING CODE 424.2.6.6 SUCTION ENTRAPMENT ATMOSPHERIC VENT TEST PROTOCOL.
- THE ACTUAL SUCTION ENTRAPMENT ATMOSPHERIC VENT TESTING WAS ACCOMPLISHED UNDER MY DIRECTION AND SUPERVISION ON DECEMBER 8, 2001.
- THE MAXIMUM VACUUM WITH ONE SUMP PLUGGED AND A BODY ENTRAPMENT ON THE OTHER SUMP NEVER EXCEED 4.5" OF MERCURY. THE ENTRAPMENT RELEASED IN LESS THAN 3 SECONDS.
- ALL SUCTION PIPING TO BE 2"
- ALL VENT PIPING TO BE 1-1/2"
- MAXIMUM SUCTION PIPE VELOCITY TO BE 6 FEET PER SECOND.
- MAIN DRAIN LOCATED IN DEEPEST PART OF THE POOL.
- POOL MUST HAVE MAIN DRAIN MINIMUM 3'-0" APART OR SEPARATED ON DIFFERENT PLANES. THEY MUST NOT BE VALVED AND HAVE SUCTION AT THE SAME TIME.
- FITTINGS PER 2001 FLORIDA BUILDING CODE.



NON-MAIN DRAIN OPTION

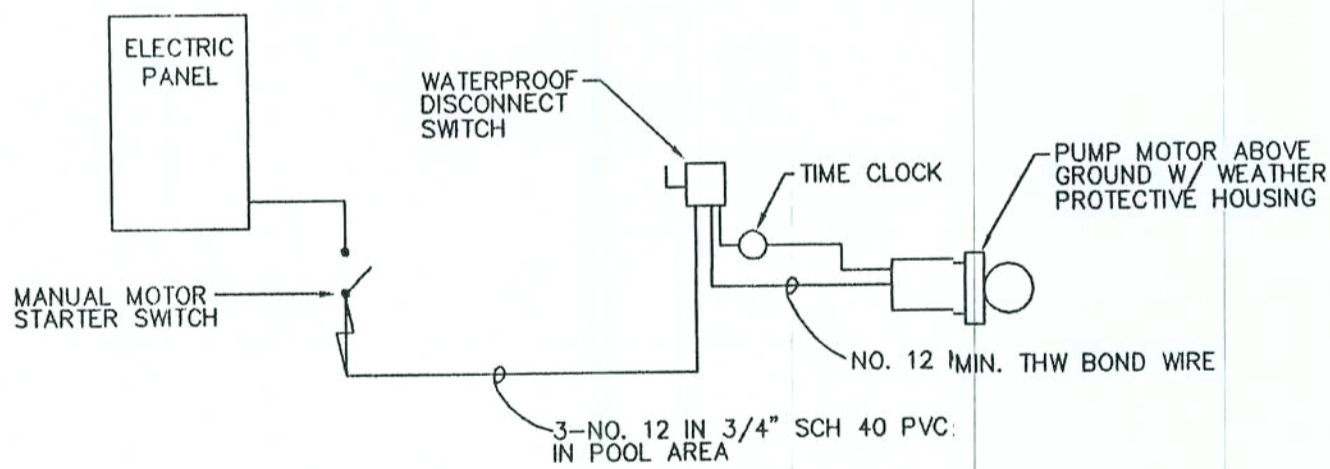
NOTES:

- TWO RETURN LINES REQUIRED FOR POOLS LESS THAN 450 SQ.FT. OF SURFACE AREA. GREATER THAN 450 SQ.FT. OF SURFACE AREA REQUIRES FOUR LINES. MINIMUM SEPARATION OF LINES ENTERING POOL SHALL BE 10 FT.
- SUMP LINE (WHEN REQ'D) TO BE 2" SCH. 40 PVC FROM 4 CUBIC FOOT GRAVEL BED BENEATH MAIN DRAIN TO 18" FROM EQUIPMENT.
- TWO SKIMMERS REQUIRED IF POOL AREA GREATER THAN 450 SQ.FT. OF SURFACE AREA.



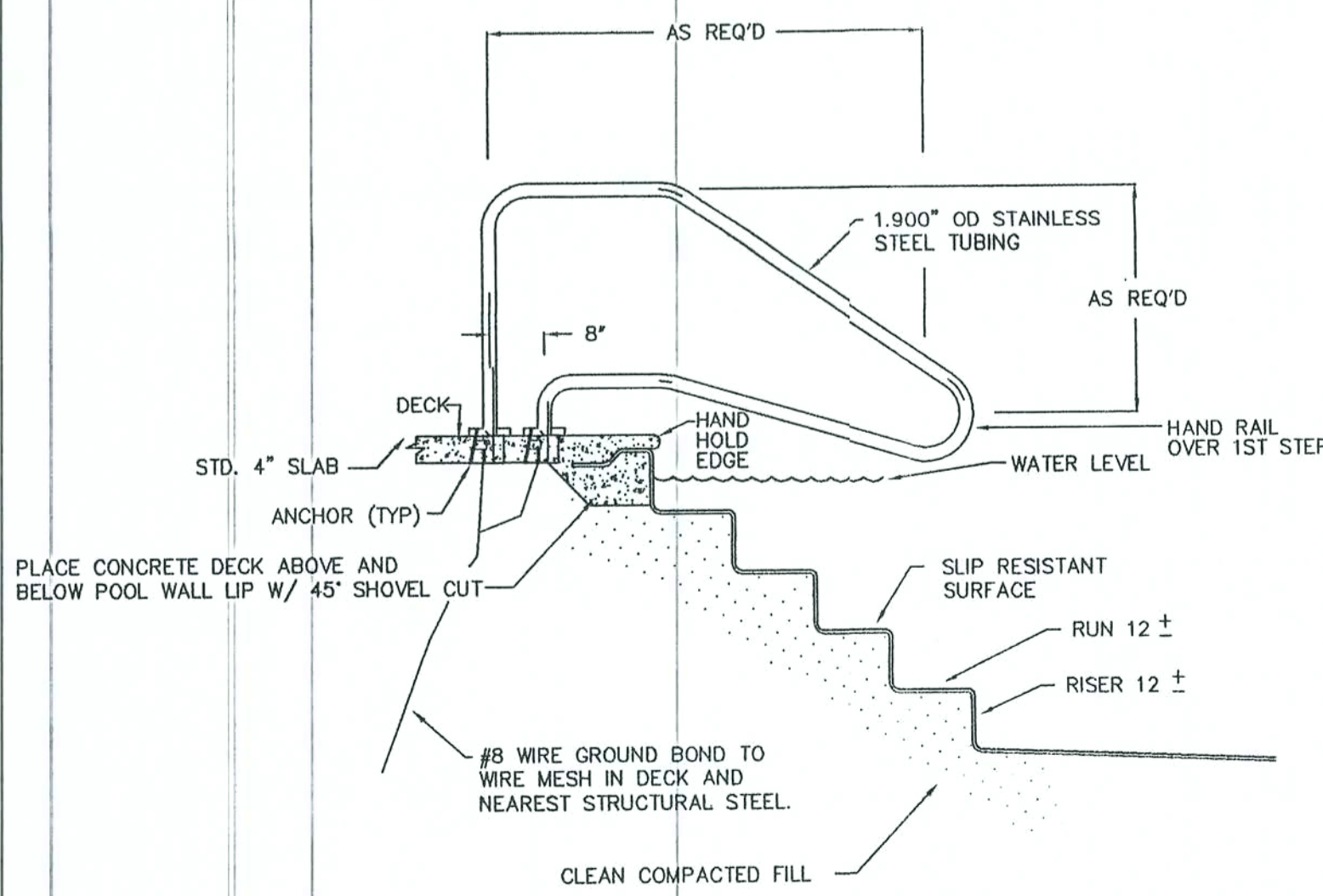
ALTERNATE COPING DETAIL

NOT TO SCALE



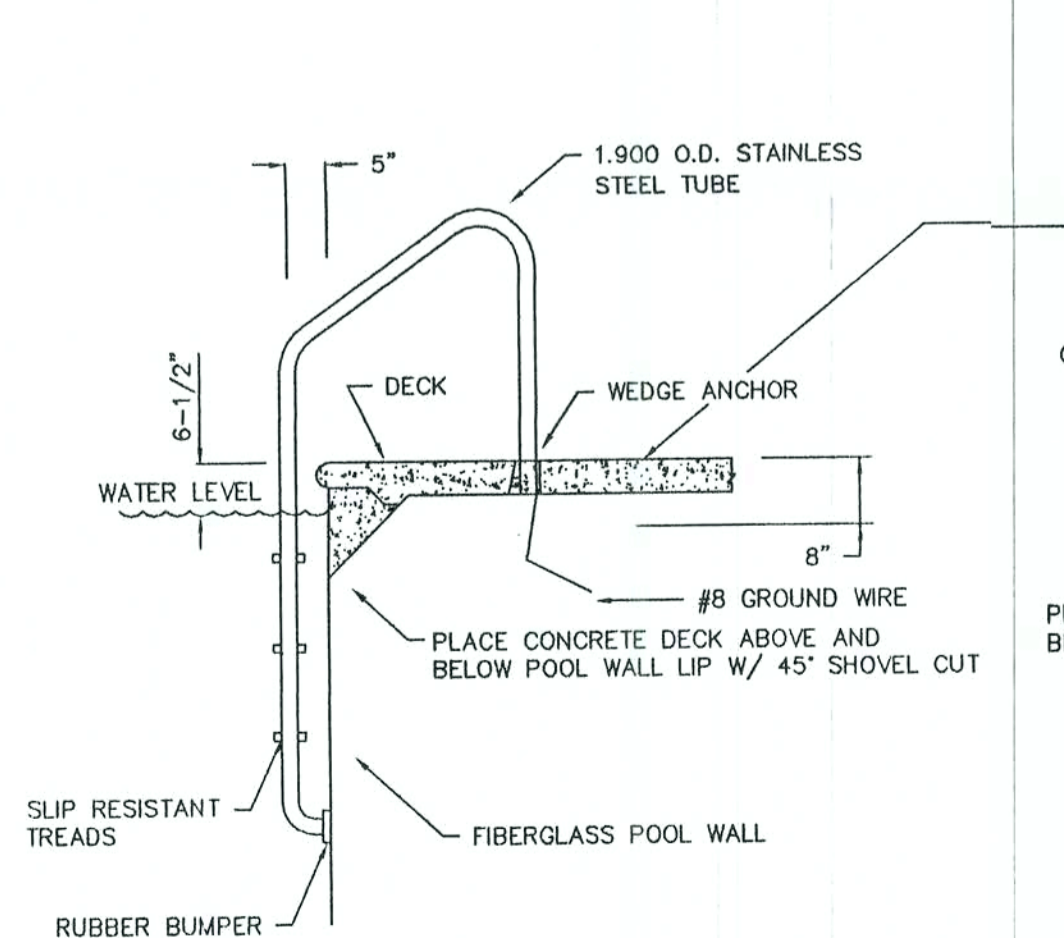
ELECTRICAL DIAGRAM

NOTES:



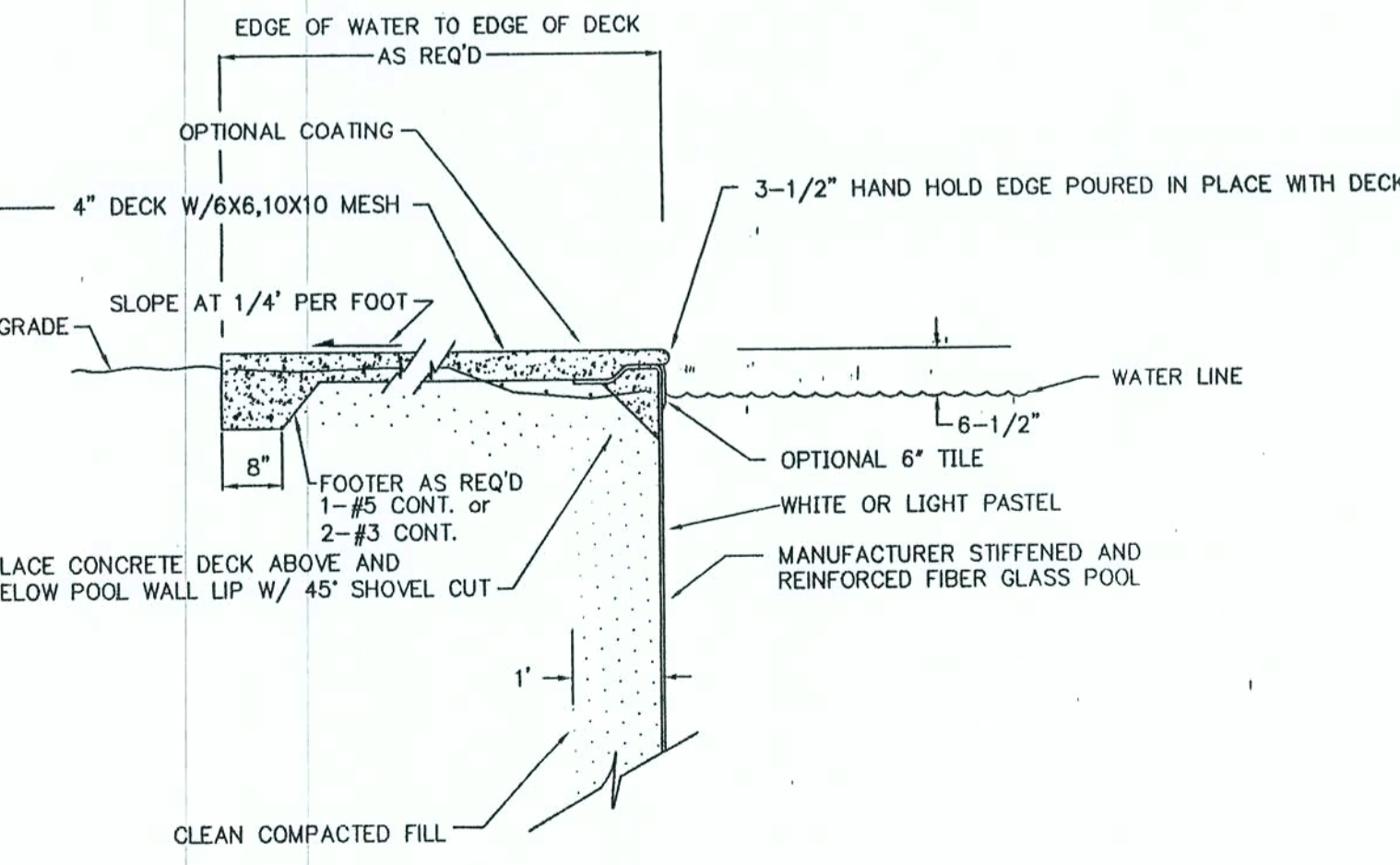
STEP HANDRAIL SECTION

NOT TO SCALE



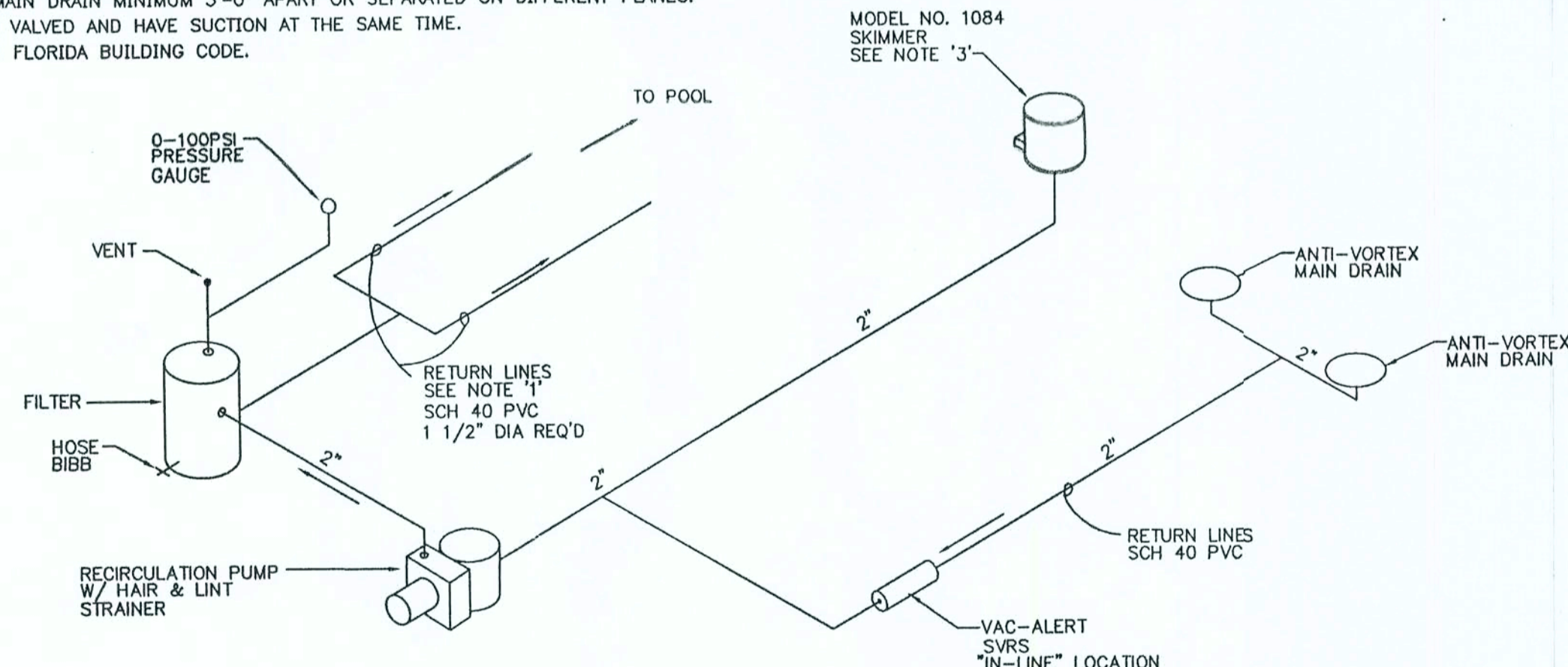
LADDER SECTION

NOT TO SCALE



WALL SECTION

NOT TO SCALE



VAC-ALERT OPTION

NOTES:

- ONE RETURN LINE REQUIRED FOR POOLS LESS THAN 450 SQ.FT. OF SURFACE AREA. GREATER THAN 450 SQ.FT. OF SURFACE AREA REQUIRES TWO LINES. MINIMUM SEPARATION OF LINES ENTERING POOL SHALL BE 10 FT.
- SUMP LINE (WHEN REQ'D) TO BE 2 SCH. 40 PVC FROM 4 CUBIC FOOT GRAVEL BED BENEATH MAIN DRAIN TO 18" FROM EQUIPMENT.
- TWO SKIMMERS REQUIRED IF POOL AREA GREATER THAN 450 SQ.FT. OF SURFACE AREA.

MICHAEL A. ROBINSON, P.E.
(RUSTY)
STRUCTURAL ENGINEERING
INDUSTRIAL, COMMERCIAL, & RESIDENTIAL
921 SHADOW DRIVE
LAKELAND, FLORIDA 33809
OFFICE PHONE: 883-815-8541
FAX LINE: 883-858-9861
E-MAIL ADDRESS: rusty@rusty.net

REV	DESCRIPTION	DATE	APRV
AECC/SAN JUAN POOLS			
BY: AMERICAN ENVIRONMENTAL CONTAINER CORP. 2302 LASSO LANE LAKELAND, FLORIDA 33801 (941) 666-3020			
Date	Checked By	Job No.	
12-22-99	MAR		
Title			Sheet
SPECIFICATIONS/DETAILS			2 of 2