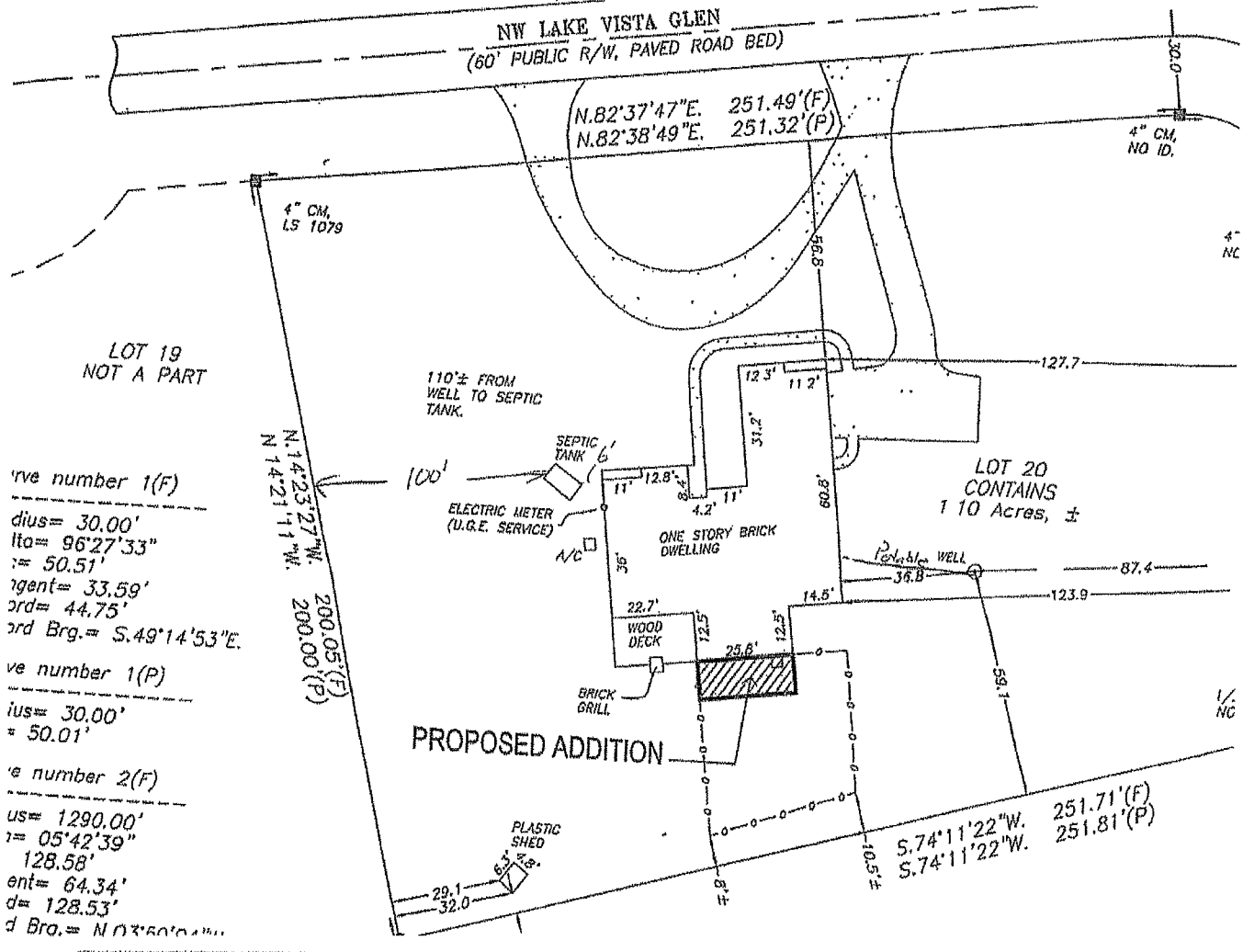


STATE OF FLORIDA
DEPARTMENT OF HEALTH
APPLICATION FOR CONSTRUCTION PERMIT

Permit Application Number 14-0136E



LOT 19
NOT A PART

Curve number 1(F)
 radius = 30.00'
 lta = 96°27'33"
 l = 50.51'
 tangent = 33.59'
 chord = 44.75'
 chord Brg. = S.49°14'53"E.

Curve number 1(P)
 radius = 30.00'
 l = 50.01'

Curve number 2(F)
 radius = 1290.00'
 lta = 05°42'39"
 l = 128.58'
 tangent = 64.34'
 chord = 128.53'
 chord Brg. = N.03°50'00"E.

*Site Plan submitted by: [Signature] 3.5.14 Agut
 Date 3/11/14
 County Health Department

REVIEWED

[Signature]

Not Approved

ALL CHANGES MUST BE APPROVED BY THE COUNTY HEALTH DEPARTMENT

ST