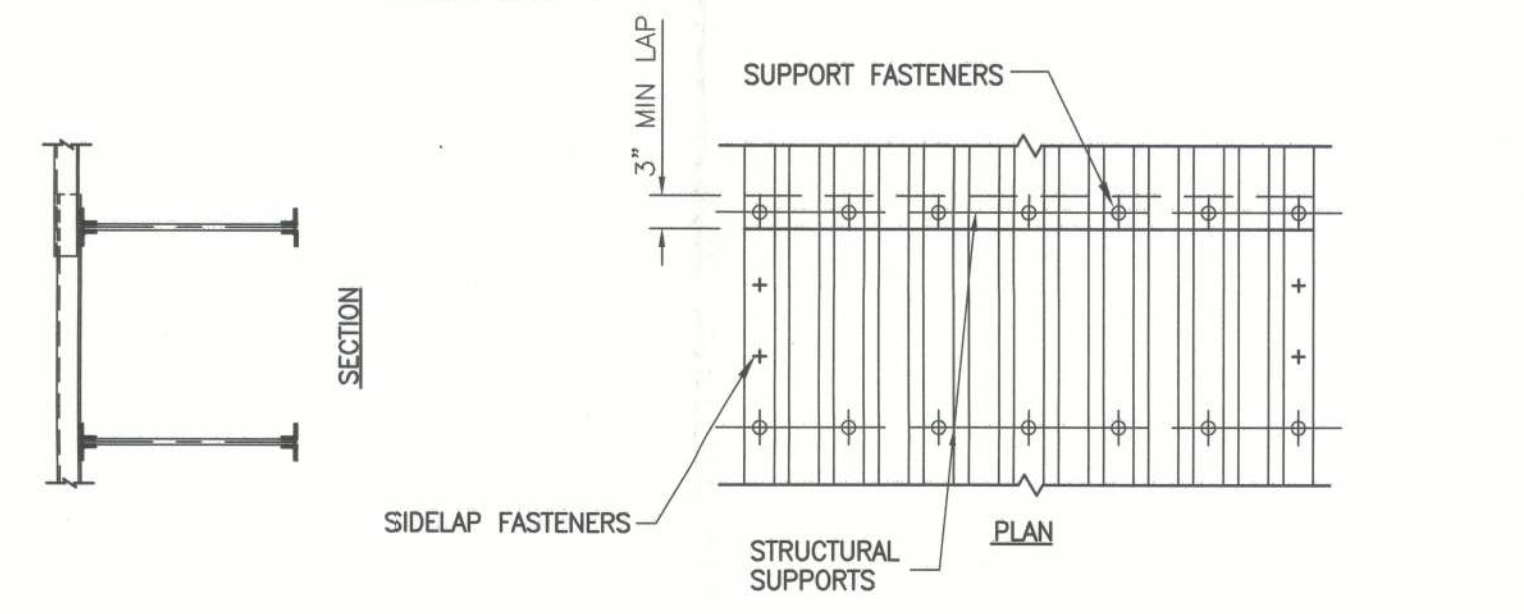


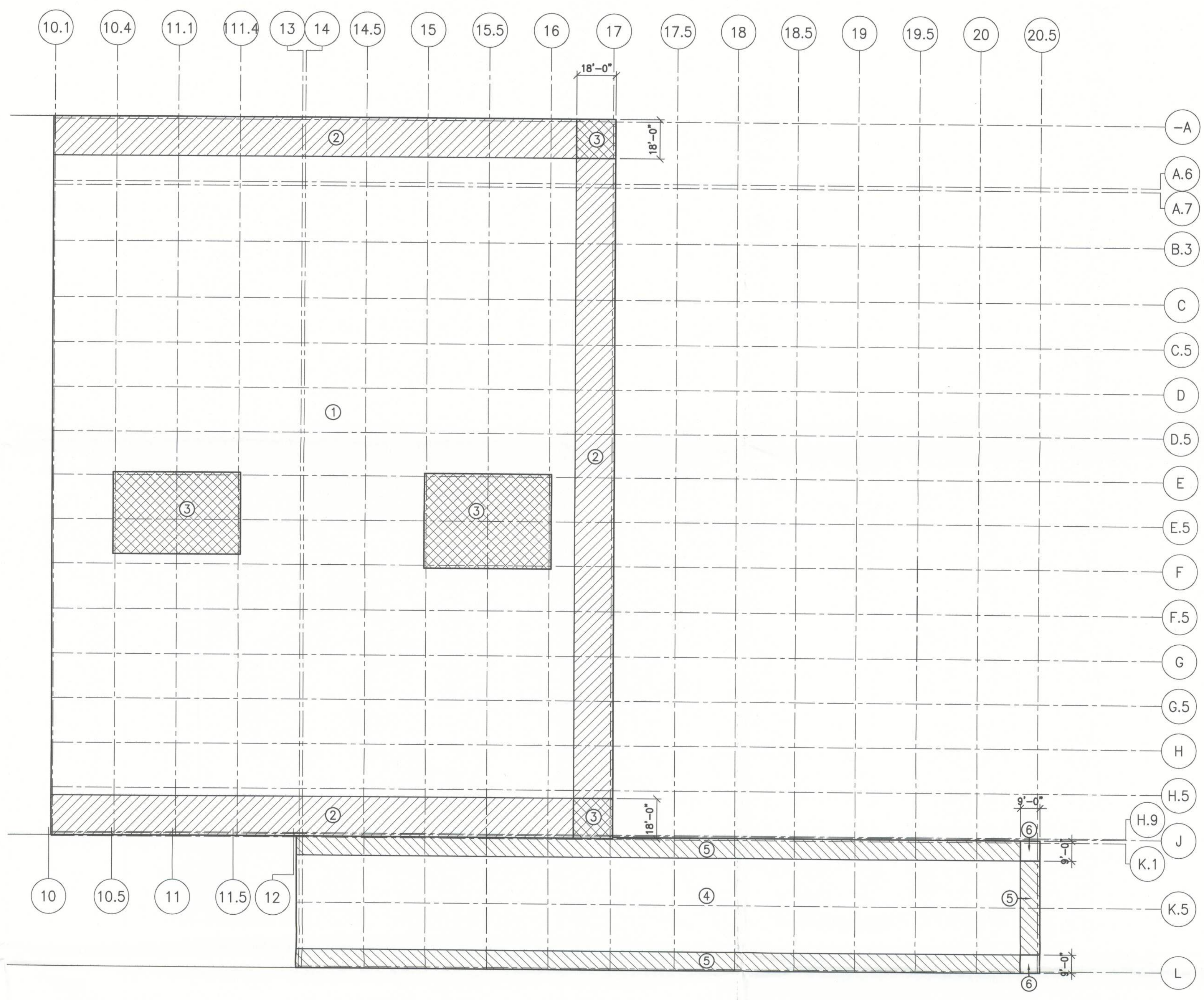
**ROOF DECK ATTACHMENT DIAGRAM**  
SCALE: 1/32"=1'-0"



ZONE	NO. OF WELDS @ SUPPORTS	NO. SIDE LAP FASTENERS BETWEEN SUPPORTS	DECK GAGE	ALLOWABLE (PLF)
A	4	2	22 (GALV.)	486
B	7	4	22 (GALV.)	330
C	7	2	22 (GALV.)	298
D	7	6	22 (GALV.)	XXX

**ROOF DECK ATTACHMENT SCHEDULE**

- NOTES:
- DECK SHALL BE ATTACHED TO ALL STRUCTURAL SUPPORTS WITH 5/8" PUDDLE WELDS.
  - SIDE LAPS BETWEEN STRUCTURAL SUPPORTS SHALL BE FASTENED BY #10 TEK'S SCREWS.
  - DECK SHALL BE ATTACHED TO ALL PERIMETER SUPPORTS WITH 5/8" PUDDLE WELDS SPACED AT 12" O.C. MAX.
  - END LAPS SHALL BE A MINIMUM OF 3" AND SHALL OCCUR OVER SUPPORTS.
  - FINISHES SHALL BE AS INDICATED ON THIS PLAN AND SCHEDULE AND SHALL CONFORM TO SECTIONS 05820 AND 05830 OF THE PROJECT SPECIFICATIONS.



**ROOF JOIST UPLIFT DIAGRAM**  
SCALE: 1/32"=1'-0"

WAREHOUSE - COMPONENT & CLADDING DESIGN  
ULTIMATE WIND PRESSURES (PSF) (GROSS)  
DESIGN WIND SPEED = 120 MPH (ASCE 7-10)

ZONE	ROOF			
	10 SF	20 SF	50 SF	100 SF
1	+16.4 (-)40.2	+15.3 (-)39.2	+14.0 (-)37.9	+13.0 (-)36.8
2	+16.4 (-)37.5	+15.3 (-)36.4	+14.0 (-)35.0	+13.0 (-)34.3
3	+16.4 (-)101.6	+15.3 (-)84.2	+14.0 (-)61.0	+13.0 (-)43.8

ZONE	WALLS			
	10 SF	20 SF	50 SF	100 SF
4	+36.8	+35.1	+33.1	+31.4
5	+36.8	+35.1	+33.1	+31.4

- NOTES:
- FOR OTHER TRIBUTARY AREAS, LINEARLY INTERPOLATE BETWEEN VALVES SHOWN ABOVE.
  - POSITIVE PRESSURES ACT TOWARD THE BUILDING. (+/PRESSURE)
  - NEGATIVE PRESSURES ACT AWAY FROM THE BUILDING. (-/SUCTION)
  - SEE DIAGRAM FOR LOCATION OF ZONES.
  - ALL WINDOW UNIT-FRAMES SHALL BE DESIGNED & INSTALLED FOR WIND PRESSURES LISTED IN TABLE.
  - LOAD CASE = 0.6DL + 0.6W = (7 PSF) + 0.6W

TRUCK DOCK - COMPONENT & CLADDING DESIGN (H<sub>mean</sub> = 26'-0")  
ULTIMATE WIND PRESSURES (PSF)  
DESIGN WIND SPEED = 120 MPH (ASCE 7-10)

ZONE	ROOF			
	10 SF	20 SF	50 SF	100 SF
4	+14.8 (-)36.5	+13.9 (-)35.5	+12.7 (-)34.3	+11.7 (-)33.4
5	+14.8 (-)81.2	+13.9 (-)74.7	+12.7 (-)46.0	+11.7 (-)39.6
6	+14.8 (-)82.1	+13.9 (-)76.3	+12.7 (-)55.3	+11.7 (-)39.6

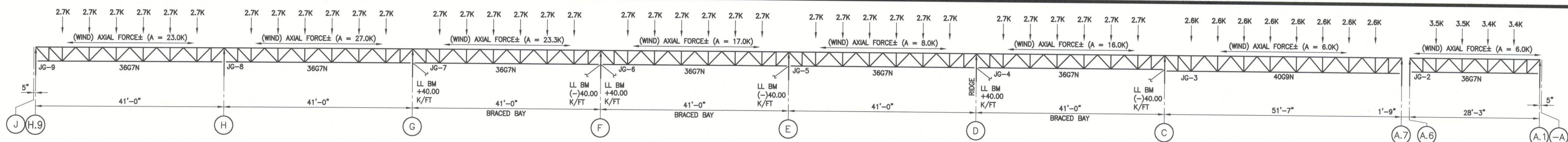
ZONE	WALLS			
	10 SF	20 SF	50 SF	100 SF
7	+33.4	+31.8	+30.0	+28.4
8	+33.4	+31.8	+30.0	+28.4

REV.	DATE	BY	DESCRIPTION
C	12/20/12	SM	PERMIT ISSUE
B	12/17/12	SM	FOUNDATION PERMIT ISSUE
A	12/17/12	SM	RELEASED FOR PERMITTING

JOB NO. 710-04224  
DRAWN: SM  
CHECKED: DK  
SCALE: AS NOTED

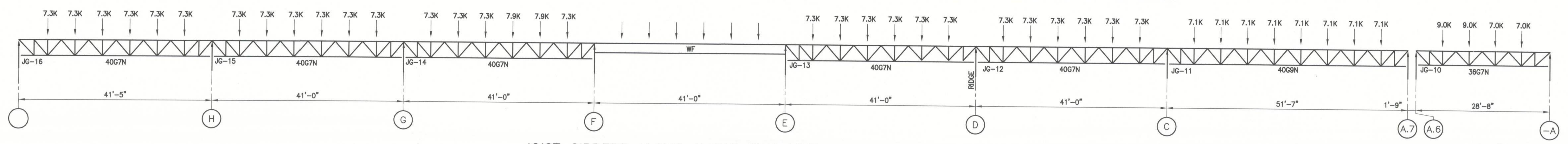
Filename: T:\Jobs\04200-04224\United States Cold Storage Phase II Facility Expansion\_FL\Design\Active\Struct\04224S600.dwg Last Saved By: SMRTIN Date: 12/20/2012 2:46:53 PM Plotted: 12/20/2012 2:47:03 PM

Filename: T:\Jobs\0400-0499\0424 United States Cold Storage Phase II Facility Expansion\_FL\Design\Struct\0424S601.dwg Last Saved By: SMARTIN Date: 12/20/2012 2:46:33 PM PlotDate: 12/20/2012 2:46:45 PM

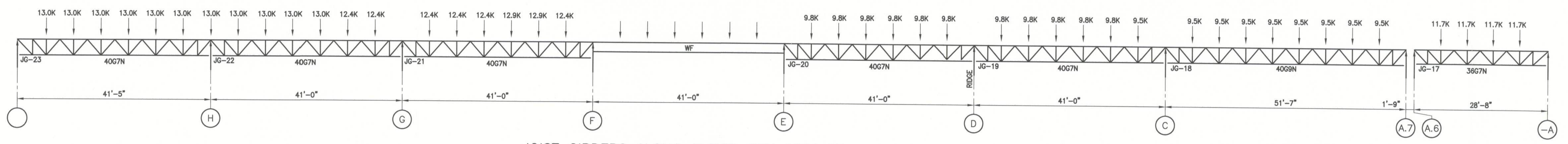


**JOIST GIRDERS ALONG ALONG GRID LINE 17**  
SCALE: 3/32" = 1'-0"

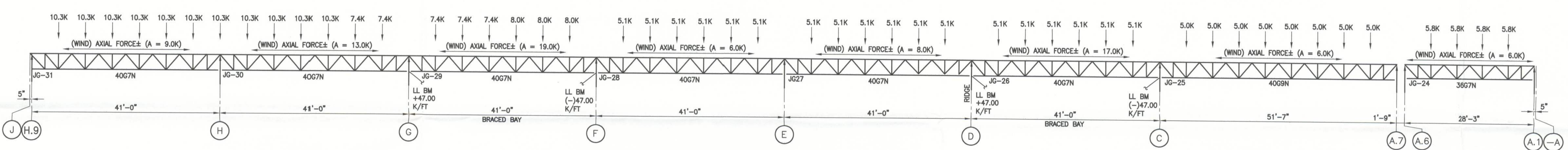
NOTE: (TYPICAL FOR ALL JOIST GIRDERS/SPECIAL JOISTS) © BRACING LINES.  
 1. LL BM = LIVE LOAD FIXED END MOMENT  
 2. AXIAL FORCE IN TOP CHORD 6.0K TYPICAL ALL GIRDERS (U.N.O.)  
 3. AXIAL FORCE TO BE TRANSFERRED TO BOTTOM CHORD AT BRACE BAYS.  
 4. AXIAL FORCES = A = ±27.0 KIPS ARE IN ASD METHOD.



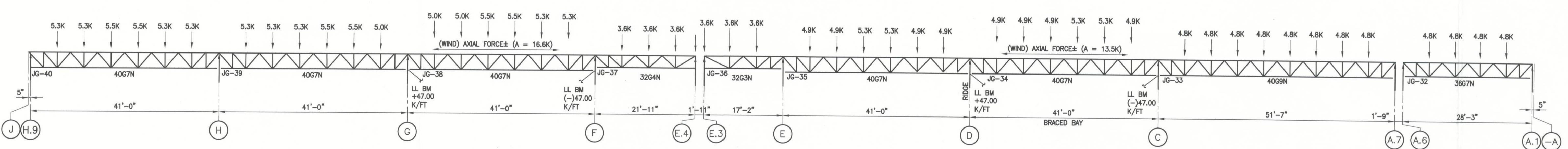
**JOIST GIRDERS ALONG ALONG GRID LINE 16**  
SCALE: 3/32" = 1'-0"



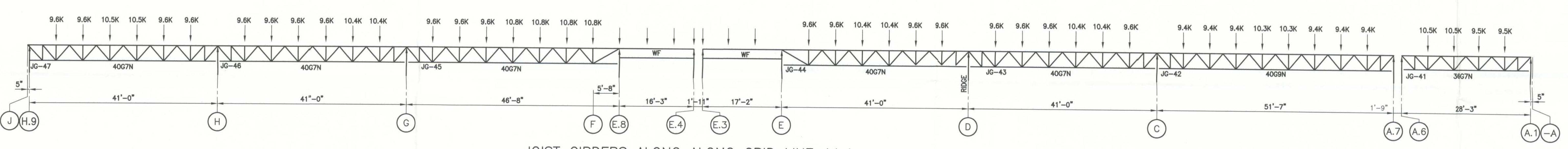
**JOIST GIRDERS ALONG ALONG GRID LINE 15**  
SCALE: 3/32" = 1'-0"



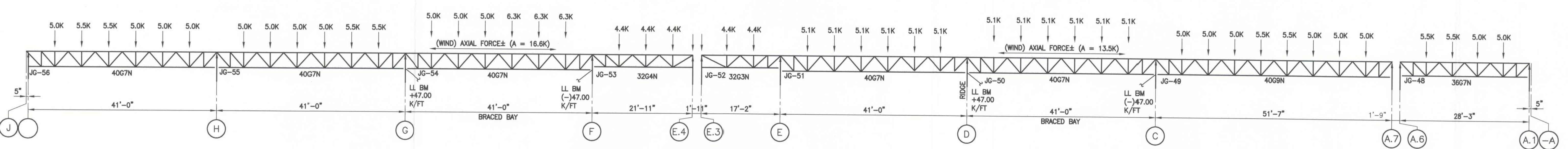
**JOIST GIRDERS ALONG ALONG GRID LINE 14**  
SCALE: 3/32" = 1'-0"



**JOIST GIRDERS ALONG ALONG GRID LINE 13**  
SCALE: 3/32" = 1'-0"



**JOIST GIRDERS ALONG ALONG GRID LINE 11.1**  
SCALE: 3/32" = 1'-0"



**JOIST GIRDERS ALONG ALONG GRID LINE 10.1**  
SCALE: 3/32" = 1'-0"



*James J. Matlock*  
 JAMES E. WATKINS  
 P.E. LICENSE #3121

UNITED STATES COLD STORAGE, INC.  
 PHASE II EXPANSION  
 LAKE CITY, FLORIDA

**JOIST GIRDER LOAD DIAGRAMS**

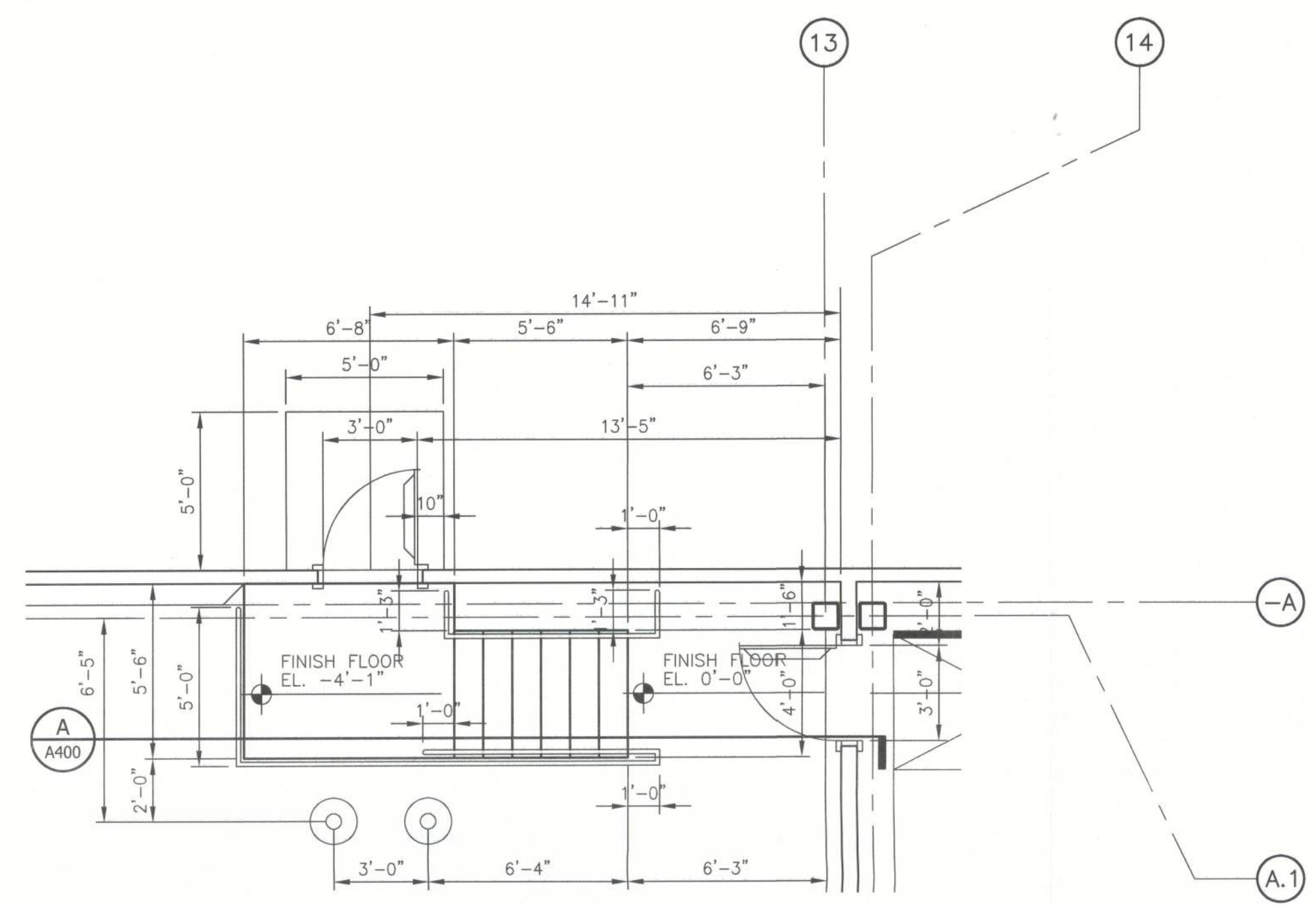
© The Stellar Group 2010. Copyright, The Stellar Group, 2010. All rights reserved. No part of this work may be used, reproduced, distributed, displayed or otherwise communicated in any form or by any means without the prior written consent of The Stellar Group.

REV.	DATE	BY	DESCRIPTION
C	12/20/12	SM	PERMIT ISSUE
B	12/27/12	SM	FOUNDATION PERMIT ISSUE
A	12/27/12	SM	RELEASED FOR PERMIT

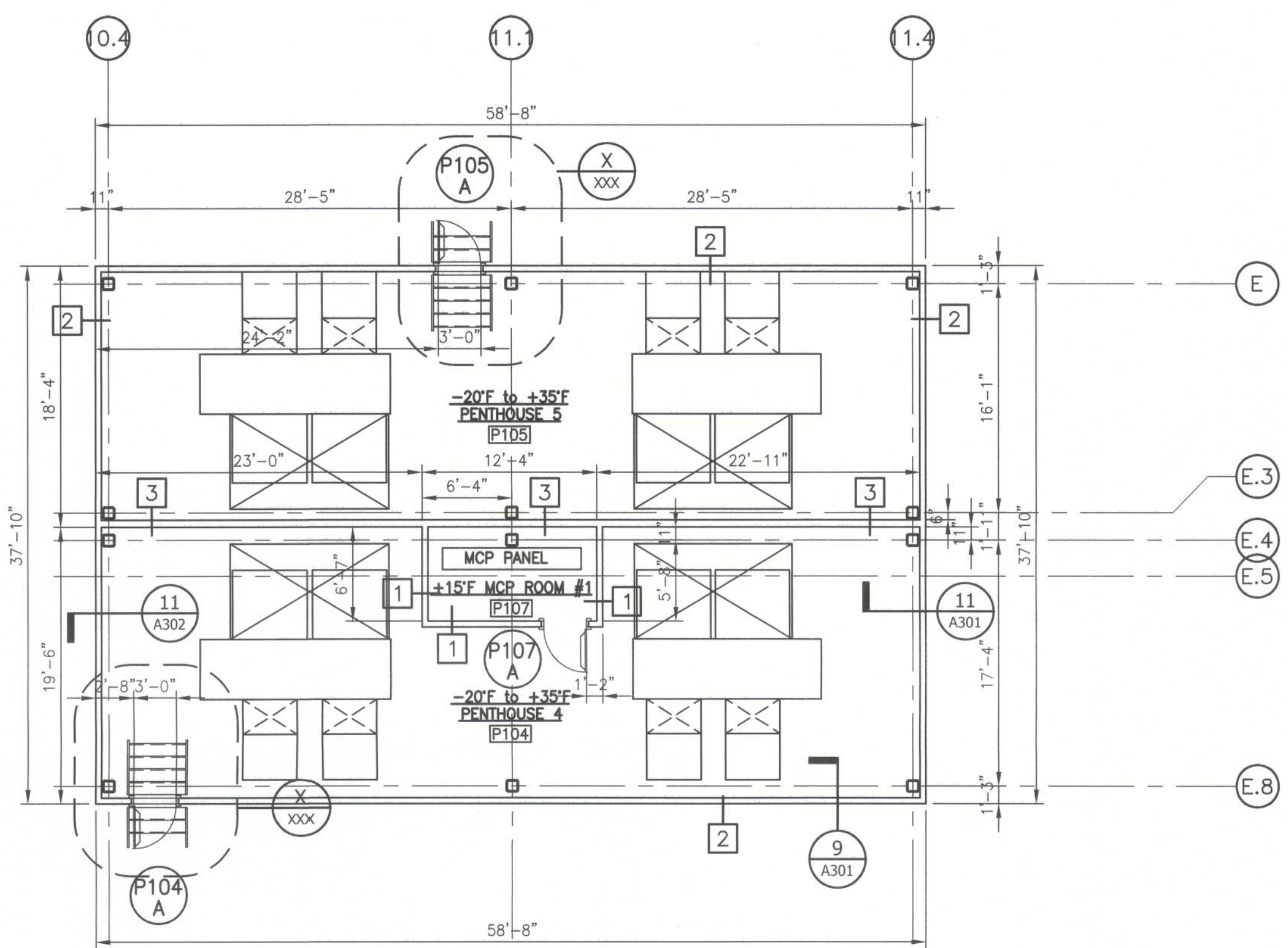
JOB NO. 710-04224  
 DRAWN: SM  
 CHECKED: DK  
 SCALE: AS NOTED

**S601**  
 DRAWING NO.

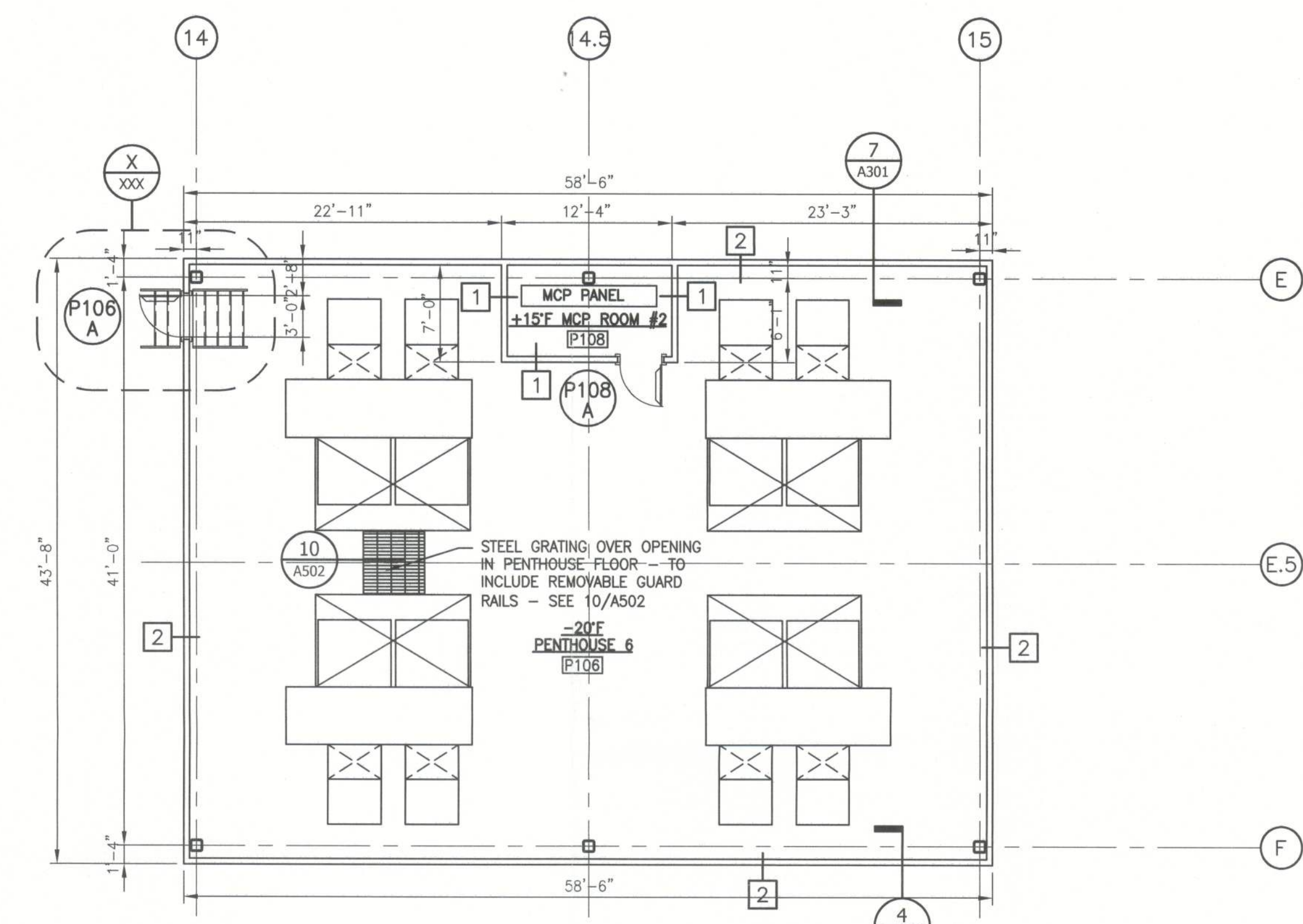
Filename: T:\Jobs\04200-04299\04224\_United States Cold Storage Phase II Facility Expansion\_F:\Design\A\Job\Arch\04224\04224.dwg Last Saved By: BBARREN Date: 12/14/2012 2:02:34 PM Plotted: 12/14/2012 2:02:49 PM



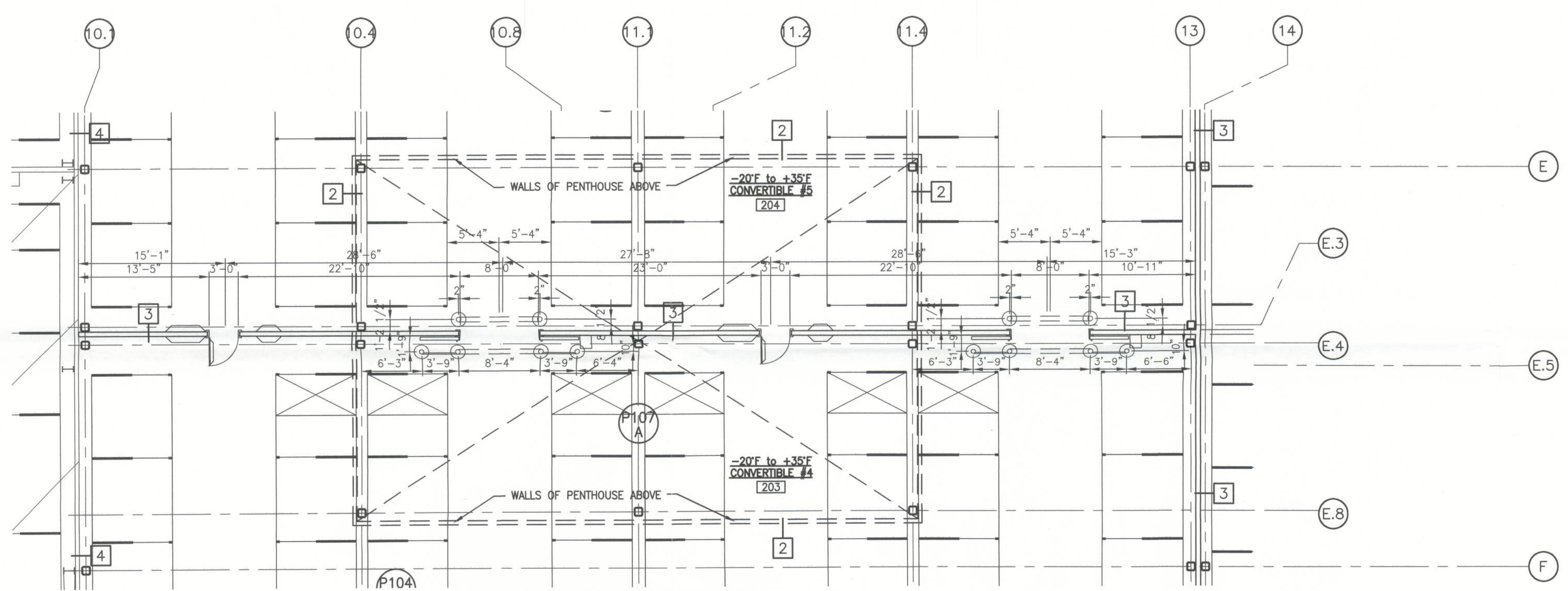
1 INTERIOR STAIR "A" ENLARGED FLOOR PLAN  
1/4"=1'-0"



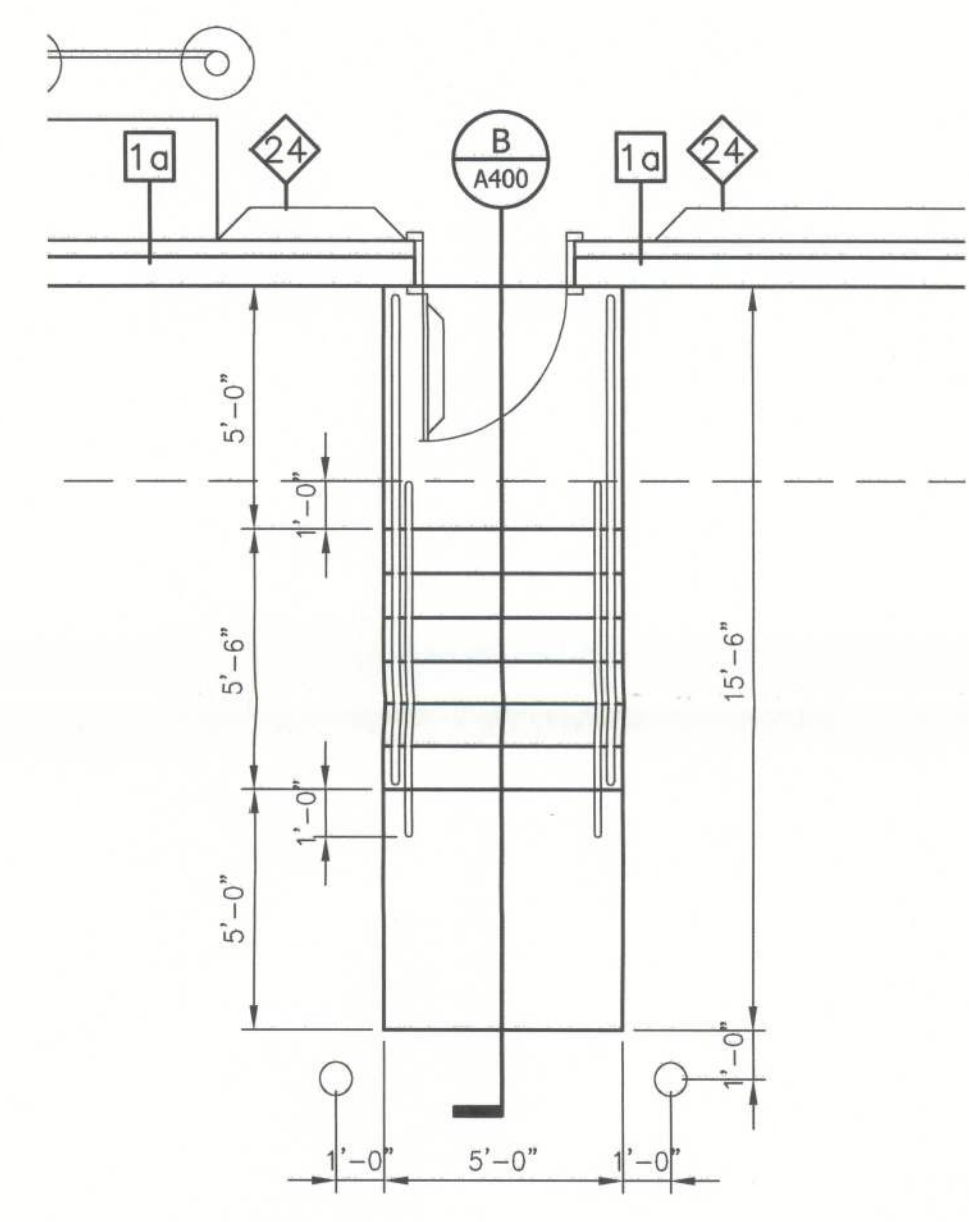
2 CONVERTIBLE PENTHOUSES ENLARGED FLOOR PLAN  
1/8"=1'-0"



3 FREEZER PENTHOUSE ENLARGED FLOOR PLAN  
1/8"=1'-0"

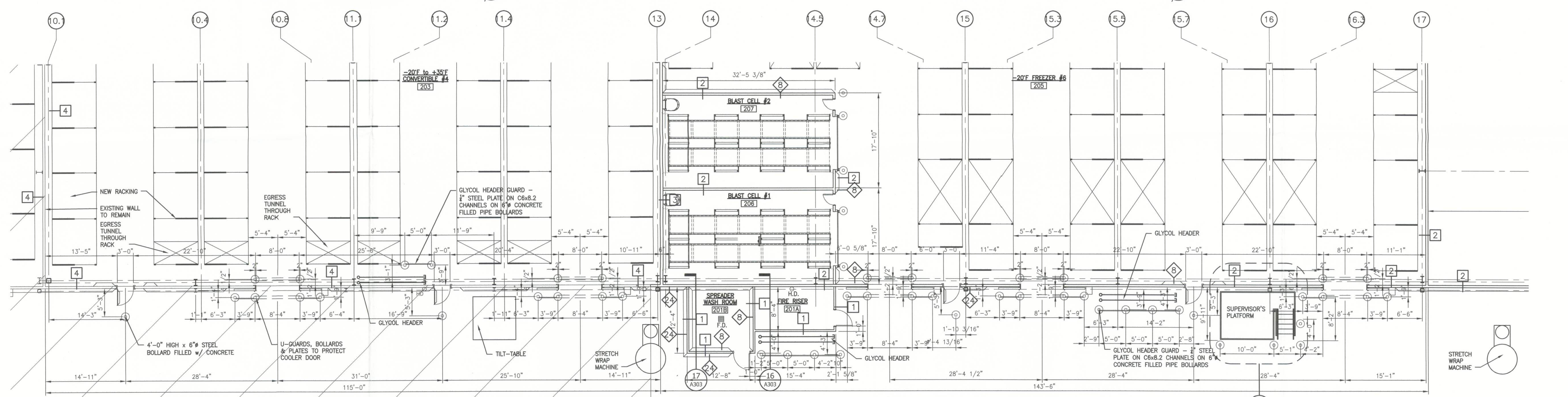


4 CONVERTIBLE WALL ENLARGED FLOOR PLAN  
1/8"=1'-0"



5 EXTERIOR STAIR "B" ENLARGED FLOOR PLAN  
1/4"=1'-0"

WALL TYPES	
1	NEW 4" INSULATED METAL PANEL
1a	NEW 4" INSULATED METAL PANEL ON 7 1/4" CONCRETE TILT-UP PANEL
2	NEW 5" INSULATED METAL PANEL
3	NEW 6" INSULATED METAL PANEL
4	EXISTING WALL TO REMAIN
5	EXISTING WALL TO BE DEMOLISHED
8	8"x8" CONCRETE CURB PAINTED WHITE - SEE DETAIL 7/A502
24	8"x24" CONCRETE CURB PAINTED WHITE - SEE DETAIL 7/A502



6 TRUCK DOCK WALL ENLARGED FLOOR PLAN  
1/8"=1'-0"

1/18/12

ENLARGED FLOOR PLANS

© The Stellar Group 2010. Copyright, The Stellar Group 2010. All rights reserved. No part of this work may be used, reproduced, distributed, displayed or otherwise communicated in any form or by any means without the prior written consent of The Stellar Group.

REV.	DATE	BY	DESCRIPTION
A	12-18-12	BB	

JOB NO. 710-04224

DRAWN: BB

CHECKED: BB

SCALE: AS NOTED

*James F. Matelski*  
 JAMES F. MATELSKI  
 FLORIDA LICENSE #83121

**UNITED STATES COLD STORAGE, INC.  
 PHASE II EXPANSION  
 LAKE CITY, FLORIDA**

**JOIST GIRDER & JOIST  
 LOADING  
 DIAGRAMS**

© The Stellar Group 2010. Copyright. This Stellar Group, 2010. All rights reserved. No part of this work may be used, reproduced, distributed, displayed or otherwise communicated in any form or by any means without the prior written consent of The Stellar Group.

REV.	DATE	BY	DESCRIPTION
C	12/20/12	SM	PERMIT ISSUE
B	12/20/12	SM	FOUNDATION PERMIT ISSUE
A	12/17/12	SM	RELEASED FOR STEEL DETAILING

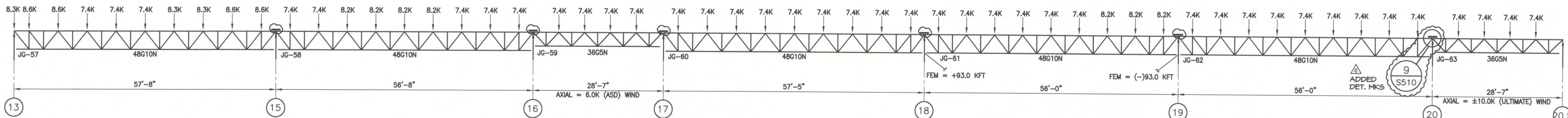
JOB NO. 710-04224

DRAWN: SM

CHECKED: DK

SCALE: AS NOTED

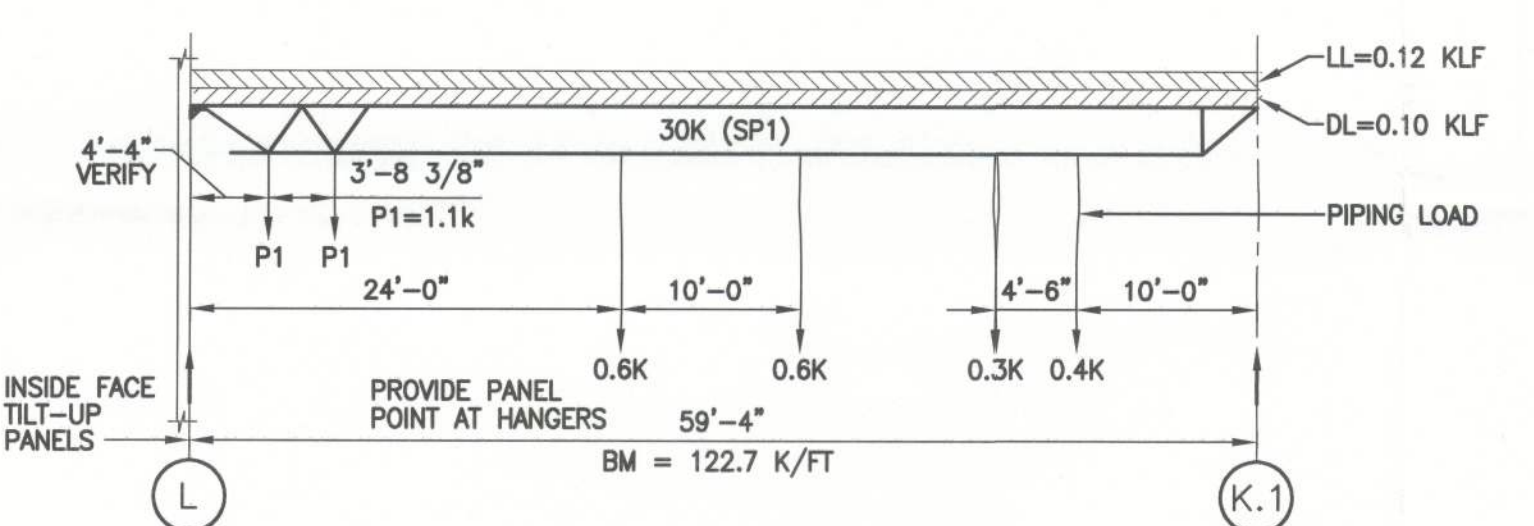
**S602**  
 DRAWING NO.



**JOIST GIRDERS ALONG GRID LINE K.1**

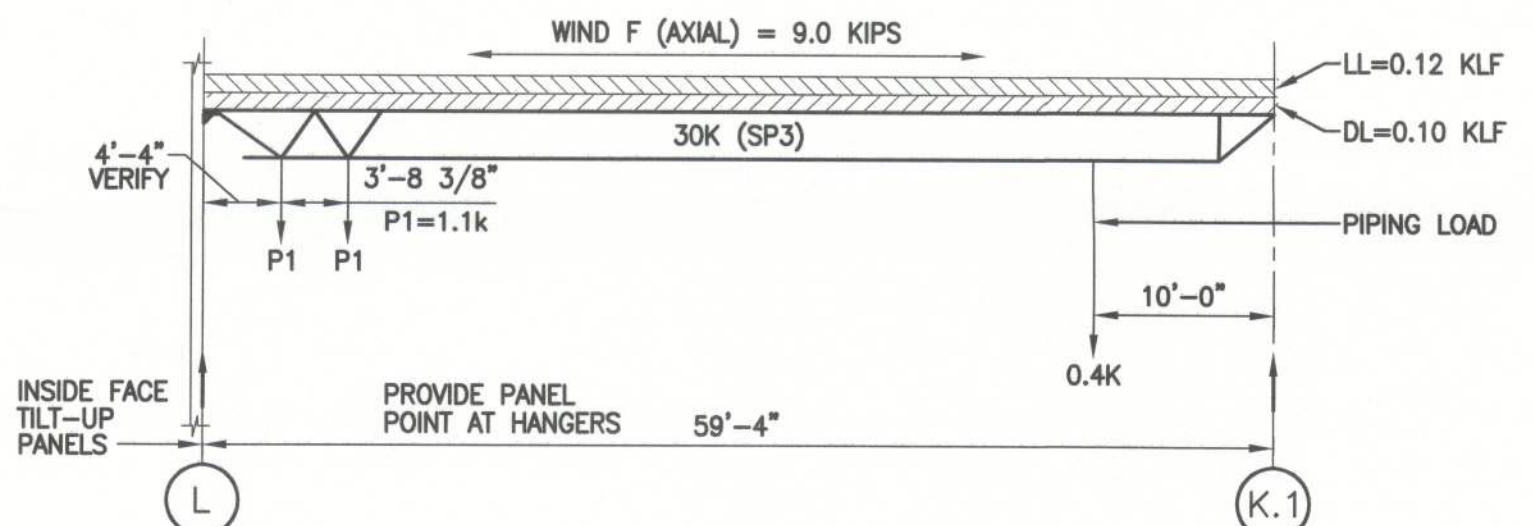
SCALE: 3/32" = 1'-0"

NOTE:  
 ALL JOIST GIRDERS SHALL BE DESIGNED FOR  
 WIND AXIAL FORCE = 6.0 KIPS (ASD)



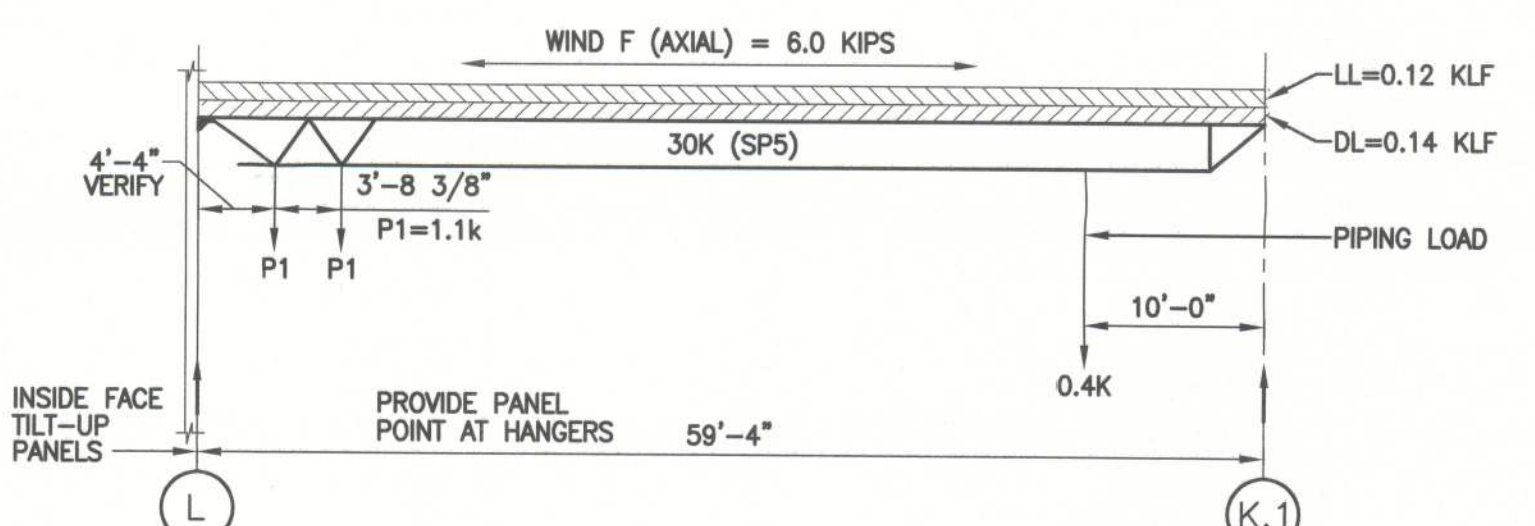
**JOISTS AT TRUCK DOCK: DESIGN LOADS**

SCALE: 3/32" = 1'-0" (5" DEEP SEATS) (TYPICAL)



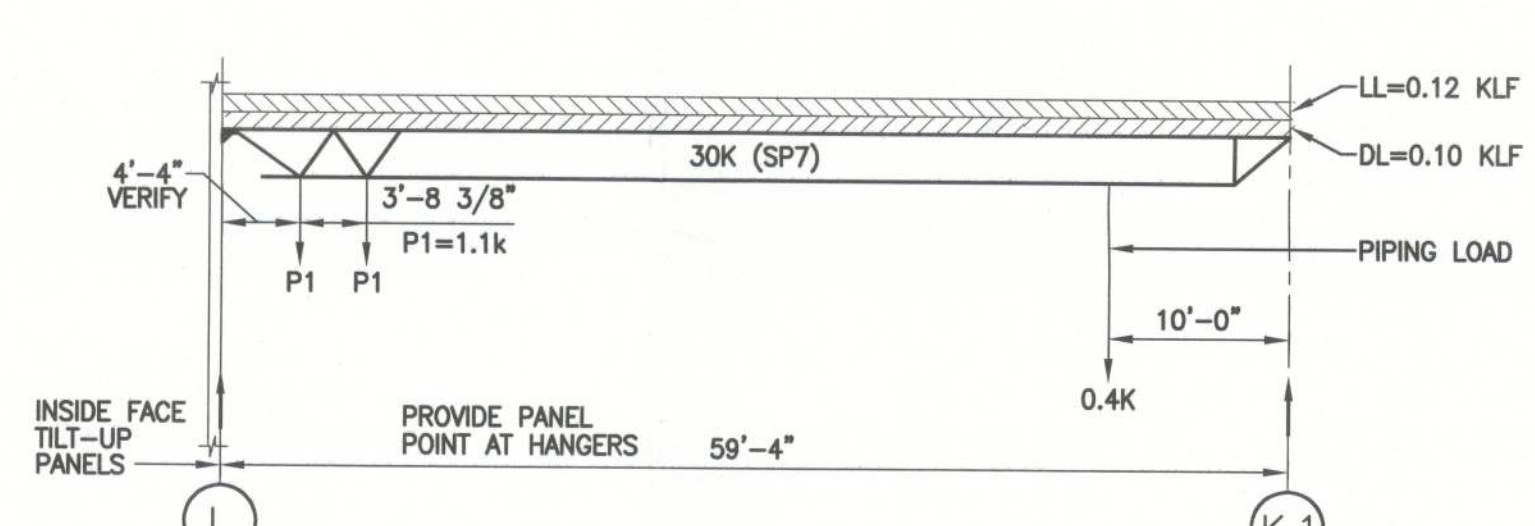
**JOISTS AT TRUCK DOCK: DESIGN LOADS**

SCALE: 3/32" = 1'-0"

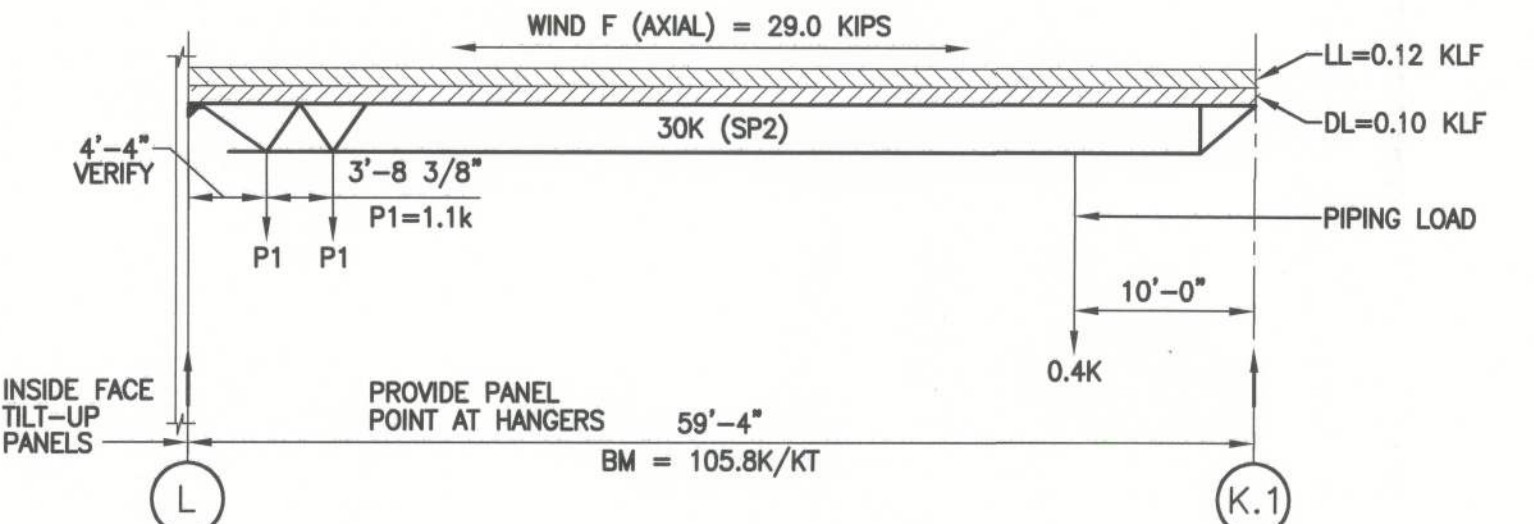


**JOISTS AT TRUCK DOCK: DESIGN LOADS**

SCALE: 3/32" = 1'-0"

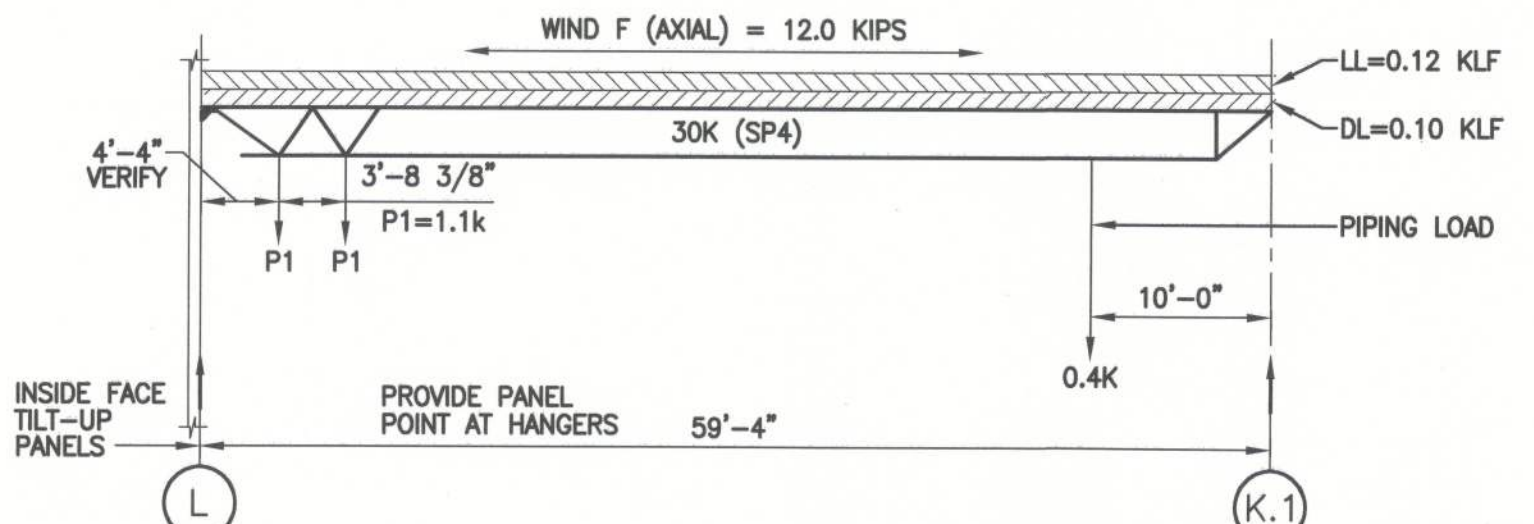


**JOISTS AT TRUCK DOCK: DESIGN LOADS**



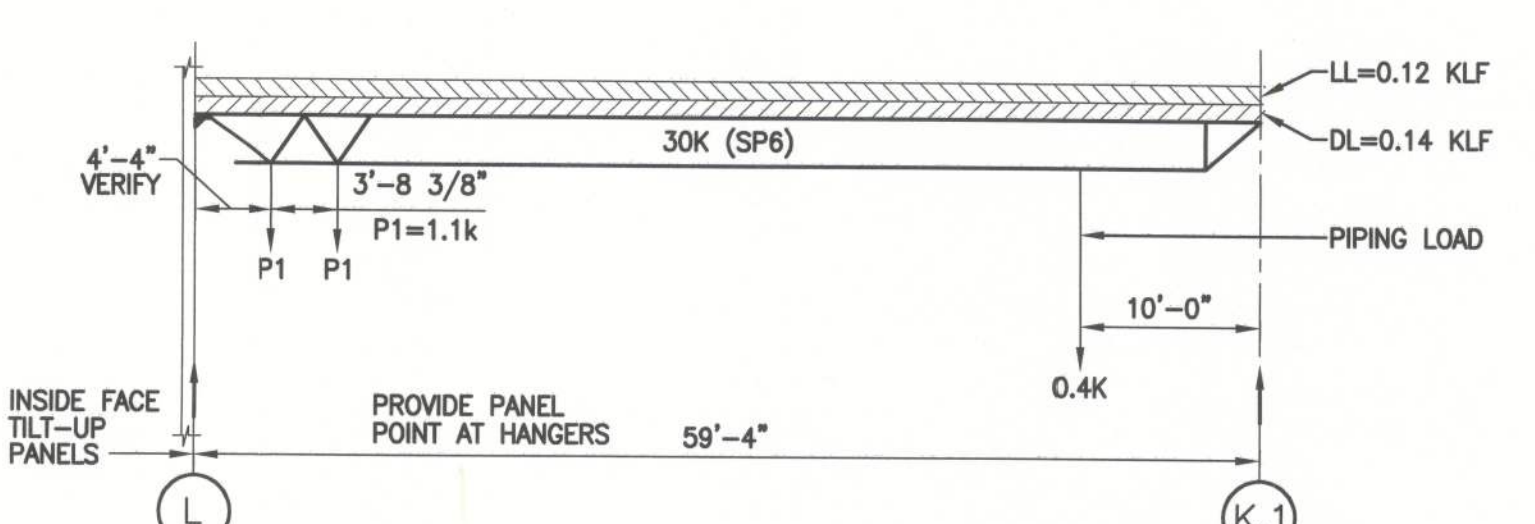
**JOISTS AT TRUCK DOCK: DESIGN LOADS**

SCALE: 3/32" = 1'-0"



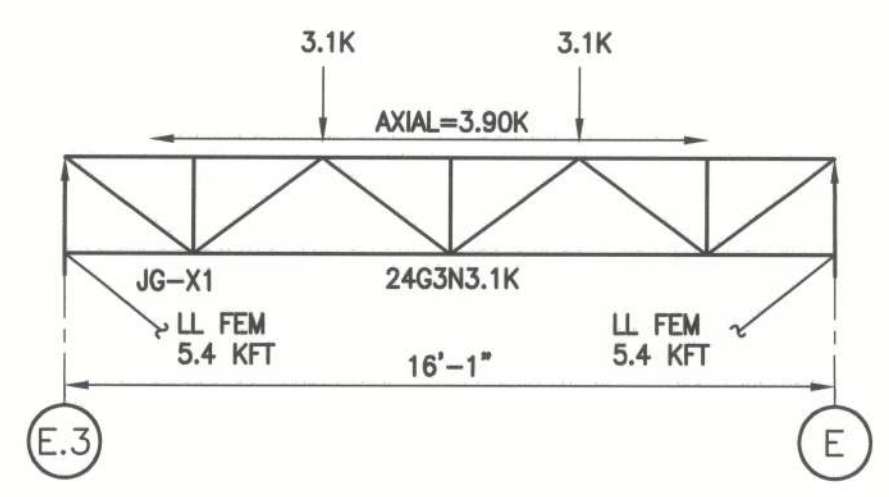
**JOISTS AT TRUCK DOCK: DESIGN LOADS**

SCALE: 3/32" = 1'-0"



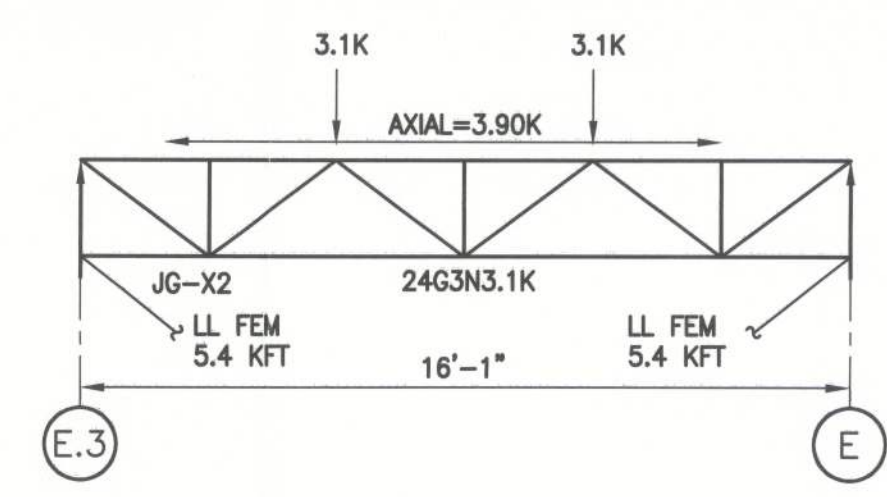
**JOISTS AT TRUCK DOCK: DESIGN LOADS**

SCALE: 3/32" = 1'-0"



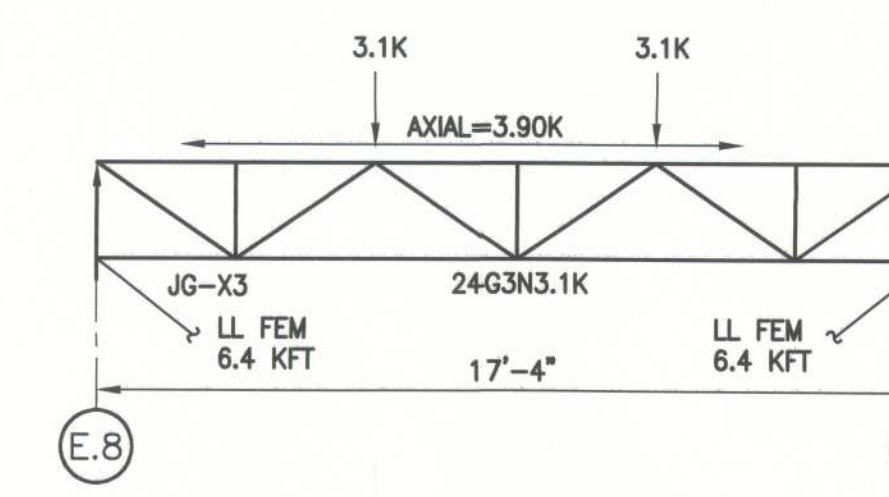
**JOIST GIRDERS PENTHOUSES  
 4, 5 DESIGN LOADS**

SCALE: 1/4" = 1'-0"



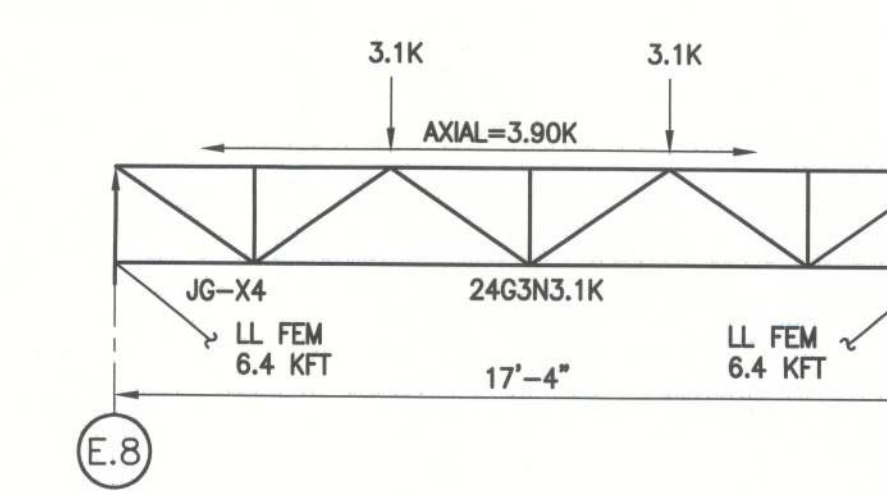
**JOIST GIRDERS PENTHOUSES  
 4, 5 DESIGN LOADS**

SCALE: 1/4" = 1'-0"



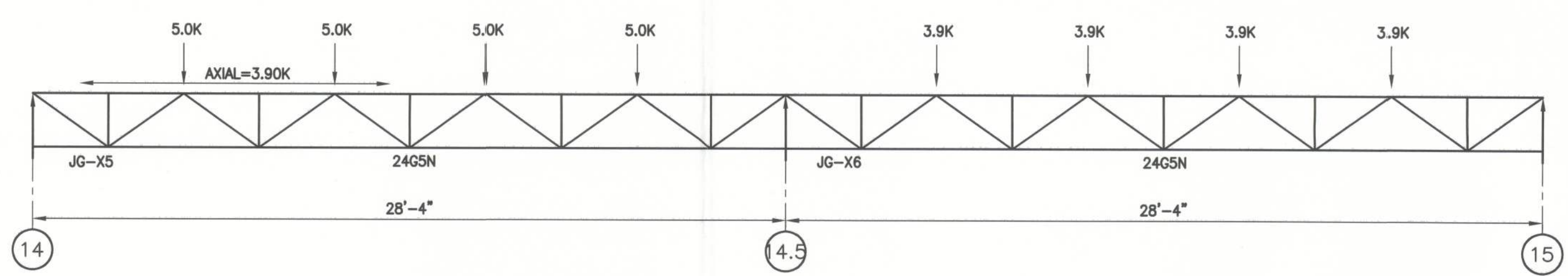
**JOIST GIRDERS PENTHOUSES  
 4, 5 DESIGN LOADS**

SCALE: 1/4" = 1'-0"



**JOIST GIRDERS PENTHOUSES  
 4, 5 DESIGN LOADS**

SCALE: 1/4" = 1'-0"

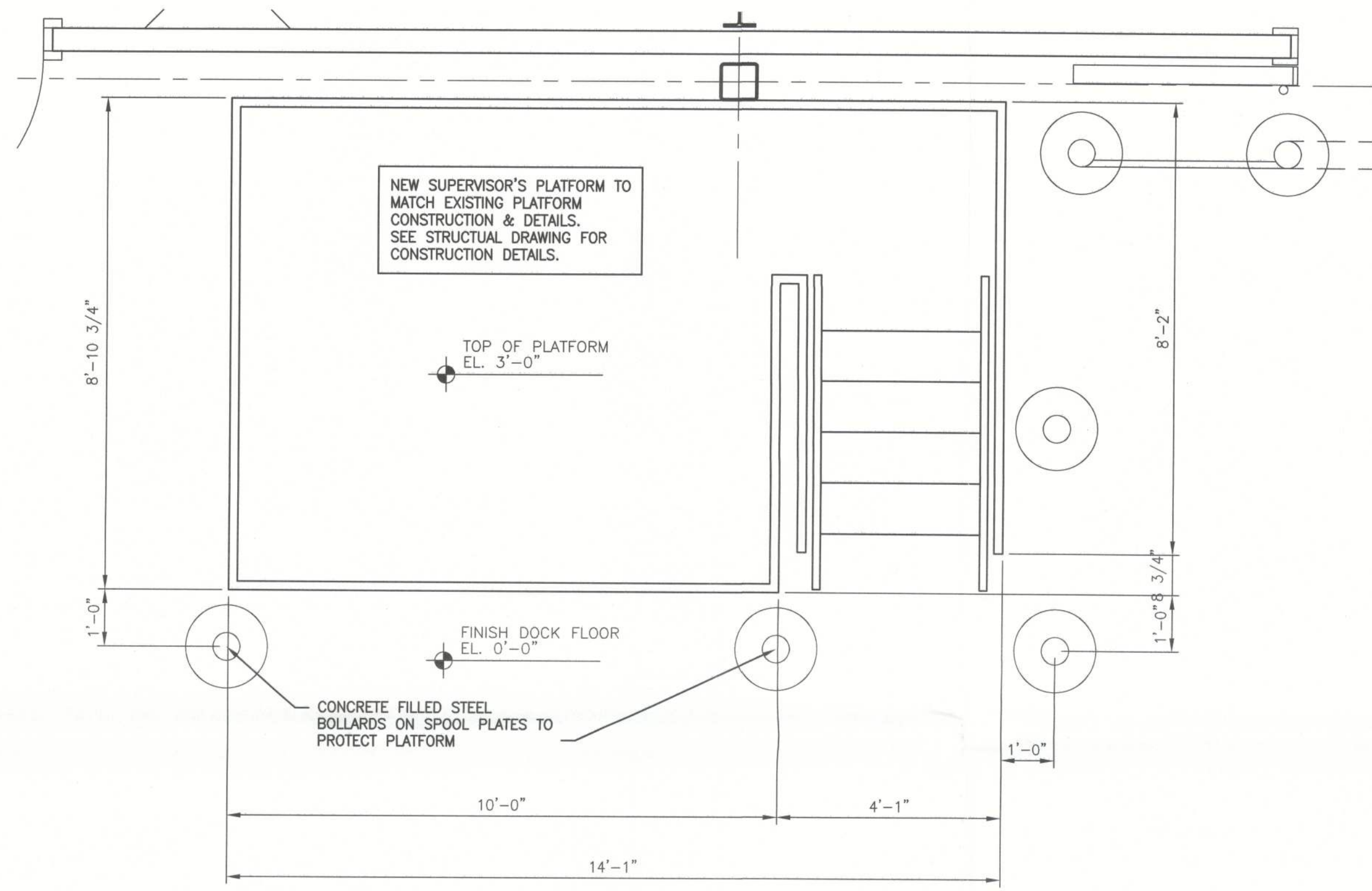


**JOIST GIRDERS PENTHOUSE 6 ALONG  
 GRID LINES E & F DESIGN LOADS**

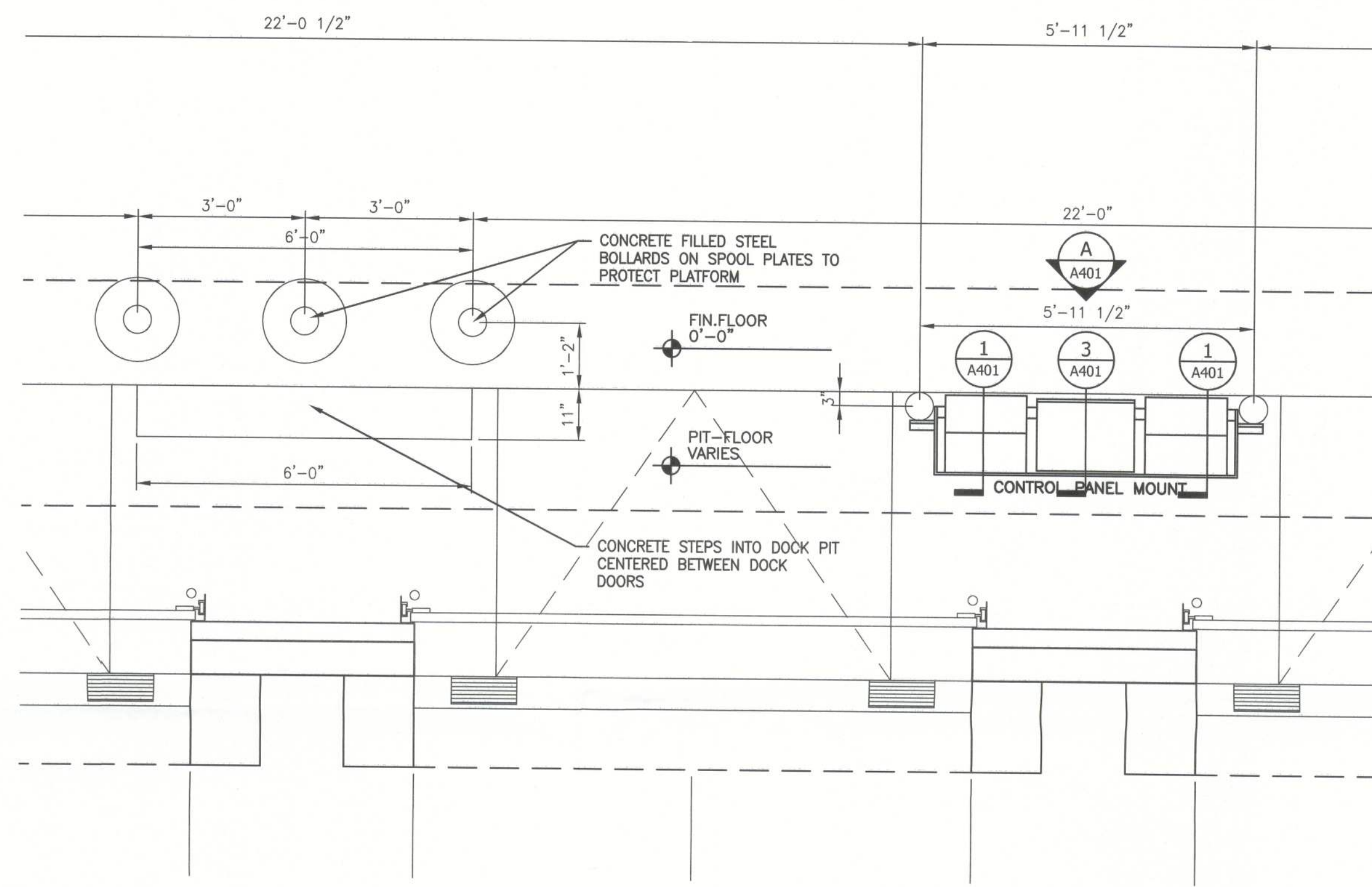
SCALE: 1/4" = 1'-0"

- TYPICAL JOIST GIRDER NOTES:  
 1. LL BM = LIVE LOAD FIXED END MOMENT  
 2. AXIAL FORCE IN TOP CHORD 6.0K (WIND-ASD) TYPICAL ALL GIRDERS (U.N.O.)  
 3. AXIAL FORCE TO BE TRANSFERRED TO BOTTOM CHORD AT BRACE BAYS.

Filename: T:\uhba\04200-04299\04224\_United States Cold Storage Phase II Facility Expansion\_FL\Design\Activa\Struct\04224S602.dwg, Last Saved By: SMARTIN Date: 12/20/2012 2:47:28 PM, Plotted: 12/20/2012 2:47:41 PM



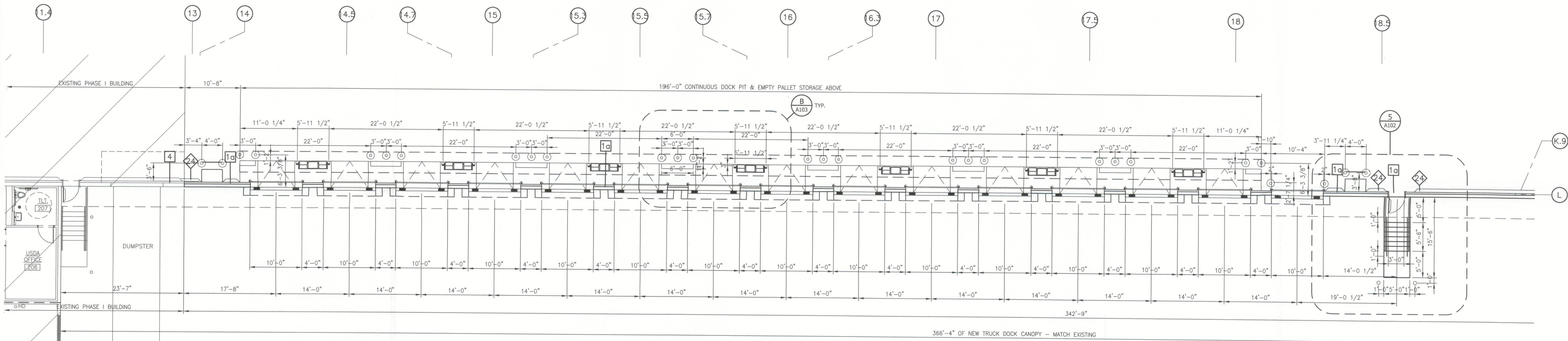
**SUPERVISOR'S PLATFORM  
ENLARGED PLAN**  
1/2"=1'-0"



**DOCK CONTROL PANEL  
ENLARGED PLAN**  
1/2"=1'-0"



WALL TYPES	
1	NEW 4" INSULATED METAL PANEL
1a	NEW 4" INSULATED METAL PANEL ON 7 1/4" CONCRETE TILT-UP PANEL
2	NEW 5" INSULATED METAL PANEL
3	NEW 6" INSULATED METAL PANEL
4	EXISTING WALL TO REMAIN
5	EXISTING WALL TO BE DEMOLISHED
8	8"x8" CONCRETE CURB PAINTED WHITE - SEE DETAIL 7/A502
24	8"x24" CONCRETE CURB PAINTED WHITE - SEE DETAIL 7/A502



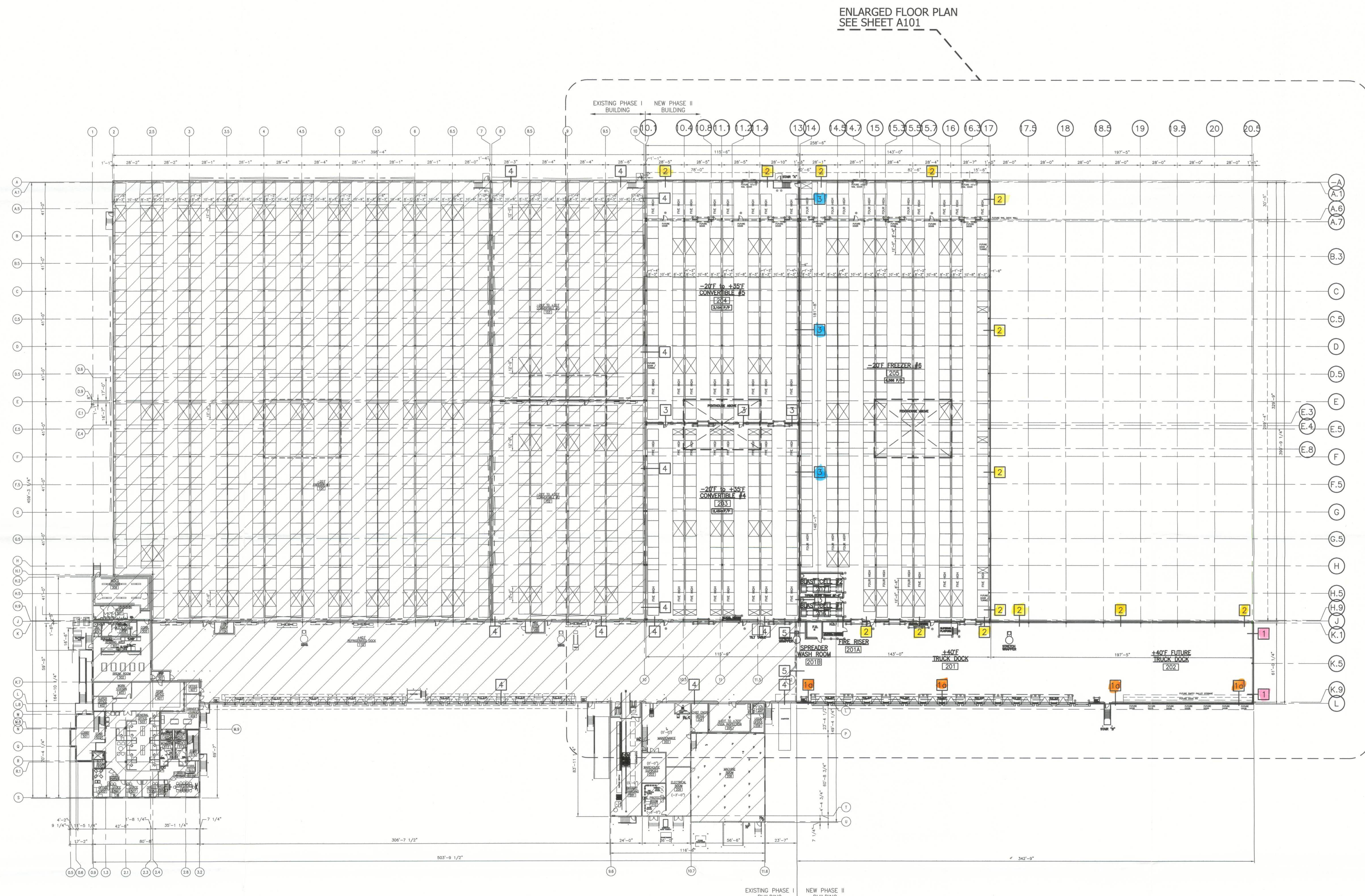
**EXTERIOR TRUCK DOCK WALL  
ENLARGED FLOOR PLAN**  
1/8"=1'-0"



REV.	DATE	BY	DESCRIPTION

JOB NO.	710-04224
DRAWN:	BB
CHECKED:	BB
SCALE:	AS NOTED

Filename: T:\vaba\04200-04299\04224 United States Cold Storage Phase II Facility Expansion\_FL\Design\Arch\04224\100.dwg Last Saved By: BBAREN Date: 12/14/2012 11:11:13 AM Plot Date: 12/14/2012 1:58:41 PM



WALL TYPES	
1	NEW 4" INSULATED METAL PANEL
1a	NEW 4" INSULATED METAL PANEL ON 7 1/4" CONCRETE TILT-UP PANEL
2	NEW 5" INSULATED METAL PANEL
3	NEW 6" INSULATED METAL PANEL
4	EXISTING WALL TO REMAIN
5	EXISTING WALL TO BE DEMOLISHED
8	8"x8" CONCRETE CURB PAINTED WHITE - SEE DETAIL 7/A502
24	8"x24" CONCRETE CURB PAINTED WHITE - SEE DETAIL 7/A502

**OVERALL FLOOR PLAN**  
1/32"=1'-0"



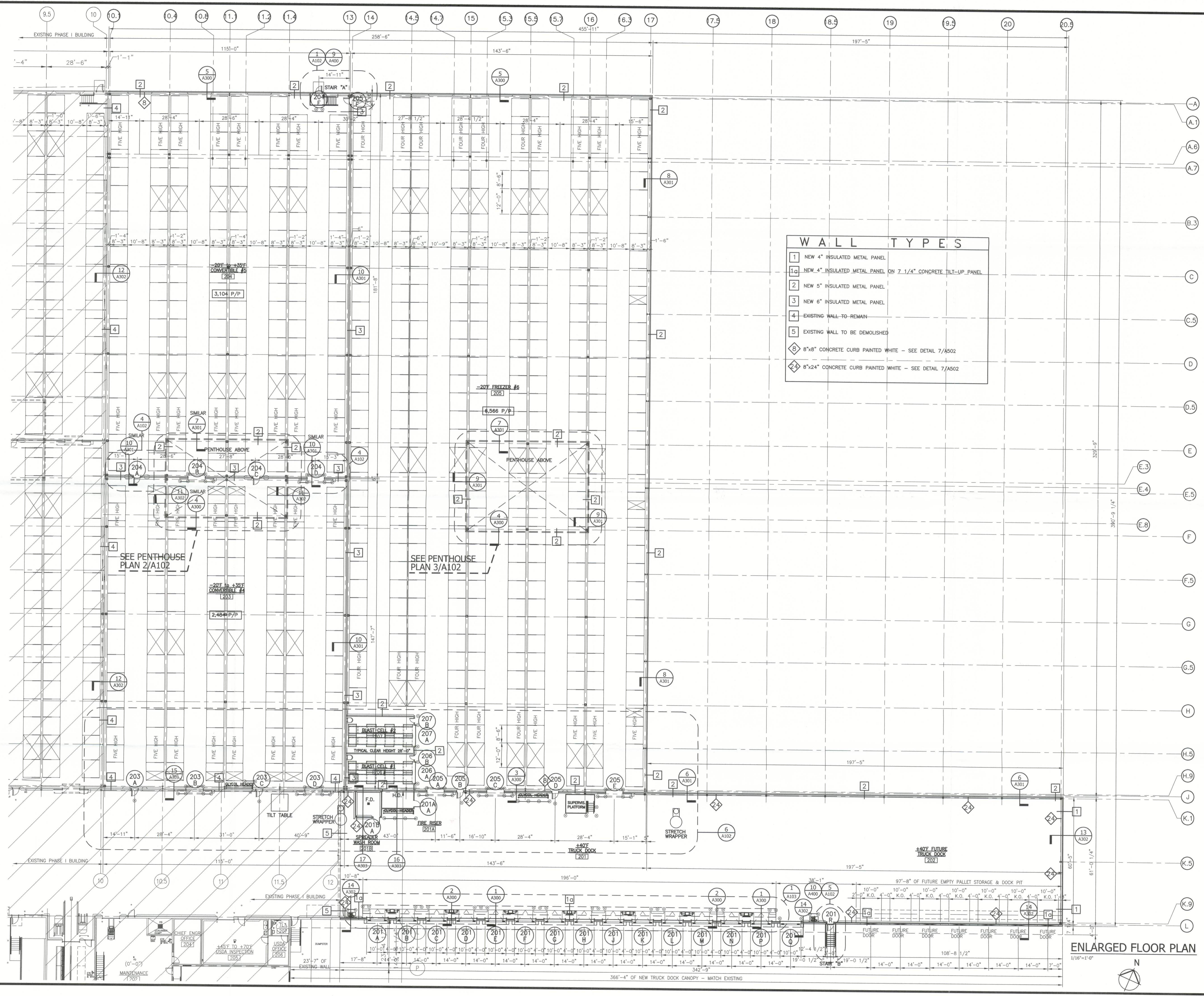
EXISTING AREA SUMMARY	
EXISTING FACILITY	-----180,238 S.F.
NEW AREA SUMMARY	
NEW +40'F TRUCK DOCK	-----20,854 S.F.
NEW -20'F to +35'F CONVERTIBLE #3	-----16,972 S.F.
NEW -20'F to +35'F CONVERTIBLE #4	-----20,949 S.F.
NEW -20'F FREEZER	-----47,378 S.F.
<b>TOTAL NEW AREA</b>	<b>-----106,153 S.F.</b>
<b>TOTAL EXISTING &amp; NEW AREA</b>	<b>-----286,391 S.F.</b>

© The Stellar Group 2010. Copyright. The Stellar Group 2010. All rights reserved. No part of this work may be used, reproduced, distributed, displayed, or otherwise communicated in any form or by any means without the prior written consent of The Stellar Group.

REV.	DATE	BY	PERM. ISSUE	DESCRIPTION
A	12-18-12	BB		

JOB NO. 710-04224  
DRAWN: BB  
CHECKED: BB  
SCALE: 1/32"=1'-0"

Filename: T:\Jobs\04200-04299\04224\United States Cold Storage Phase II Facility Expansion\_FL\Design\A101.dwg Last Saved By: BBAUREN Date: 12/14/2012 11:11:17 AM Plotted: 12/14/2012 2:00:18 PM



WALL TYPES	
1	NEW 4" INSULATED METAL PANEL
1a	NEW 4" INSULATED METAL PANEL ON 7 1/4" CONCRETE TILT-UP PANEL
2	NEW 5" INSULATED METAL PANEL
3	NEW 6" INSULATED METAL PANEL
4	EXISTING WALL TO REMAIN
5	EXISTING WALL TO BE DEMOLISHED
8	8"x8" CONCRETE CURB PAINTED WHITE - SEE DETAIL 7/A502
24	8"x24" CONCRETE CURB PAINTED WHITE - SEE DETAIL 7/A502

*Handwritten initials and date: 11-18-12*

**UNITED STATES COLD STORAGE, INC.**  
**PHASE II EXPANSION**  
 LAKE CITY, FLORIDA

**ENLARGED FLOOR PLAN**

© The Stellar Group 2010. Copyright, The Stellar Group 2010. All rights reserved. No part of this work may be used, reproduced, distributed, stored or otherwise communicated in any form or by any means without the prior written consent of The Stellar Group.

REV.	DATE	BY	PERMIT ISSUE DESCRIPTION
A	12-14-12	BB	

JOB NO. 710-04224

DRAWN: BB

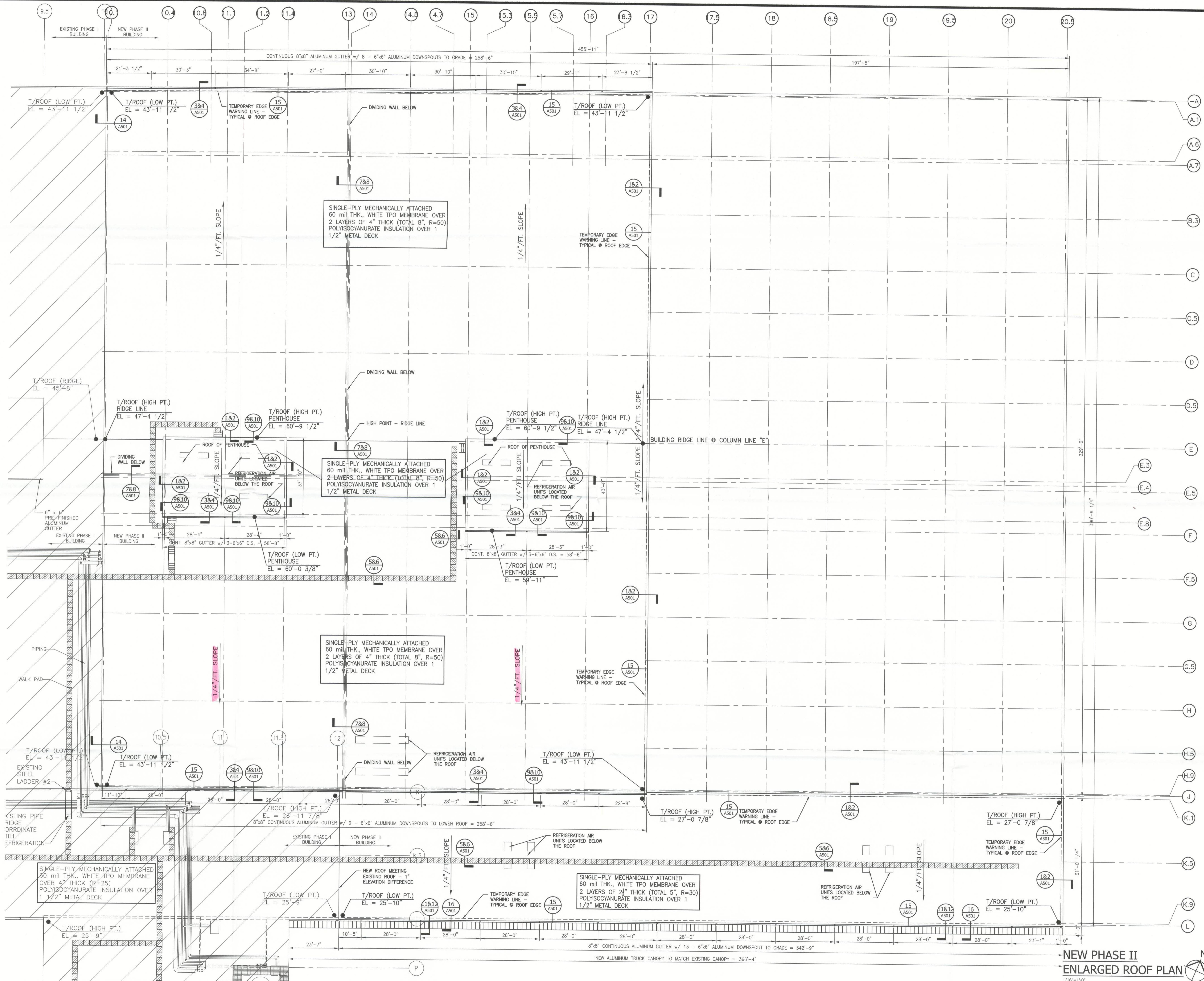
CHECKED: BB

SCALE: 1/16"=1'-0"

**ENLARGED FLOOR PLAN**



Filename: T:\04224\04224 United States Cold Storage Phase II Facility Expansion\_11\Design\Arch\04224\04224.dwg Last Saved By: BBHREM Date: 12/11/2012 2:08:49 PM Plotted: 12/11/2012 2:08:57 PM



UNITED STATES COLD STORAGE, INC.  
PHASE II EXPANSION  
LAKE CITY, FLORIDA

ENLARGED  
ROOF  
PLAN

© The Stellar Group 2010. Copyright, The Stellar Group 2010. All rights reserved. No part of this work may be used, reproduced, distributed, displayed or otherwise communicated in any form or by any means without the prior written consent of The Stellar Group.

REV.	DATE	BY	CHKD.	ISSUE DESCRIPTION

JOB NO. 710-04224

DRAWN: BB

CHECKED: BB

SCALE: 1/16"=1'-0"

A104

DRAWING NO.

1/16"=1'-0"