

# 2024-K NEW FIRE DEPARTMENT ADMINISTRATION BUILDING

## 1579 NW LAKE JEFFERY ROAD

### LAKE CITY, FLORIDA



Danny  
Kail  
Digitally signed  
by Danny Kail  
Date: 2024.09.25  
15:50:49 -04'00'



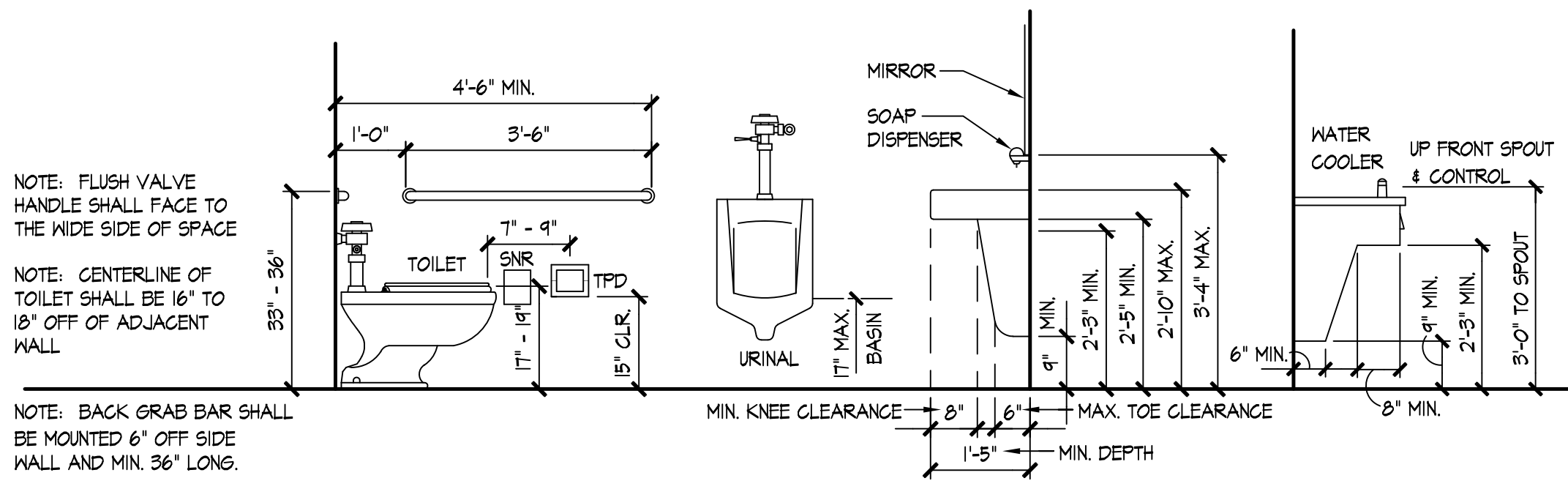
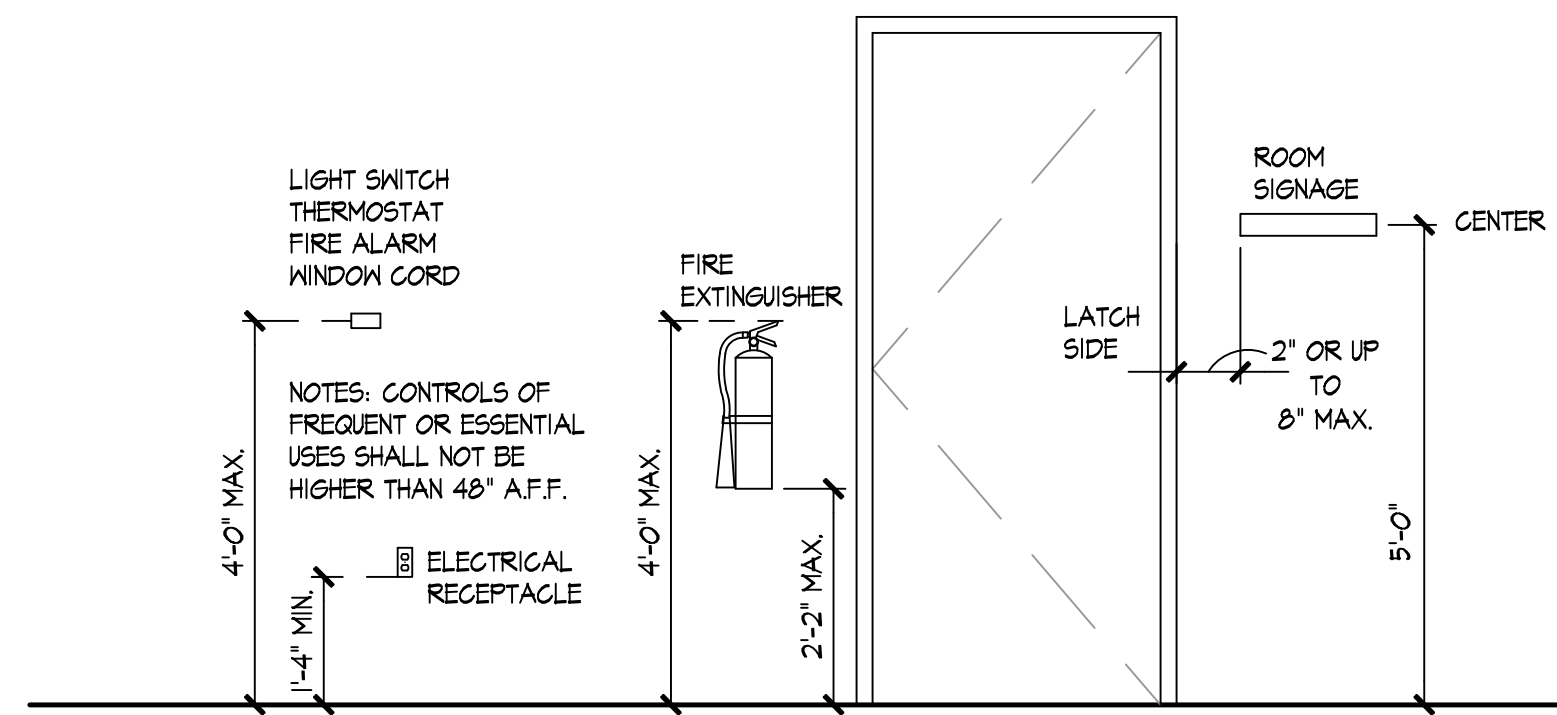
NEW FIRE DEPARTMENT ADMINISTRATION BUILDING  
1579 NW LAKE JEFFERY ROAD  
LAKE CITY, FLORIDA

#	Date	Note

GENERAL COVER SHEET  
NTS  
CONSTRUCTION DOCUMENTS

DATE  
9/12/2024  
**2338**  
**G-1**

### STANDARD MOUNTING PER A.D.A. REQUIREMENTS



### DESIGN CRITERIA

- FLORIDA BUILDING CODE 8TH EDITION 2023
- FLORIDA FIRE PREVENTION CODE 8TH EDITION
- OCCUPANCY CLASSIFICATION IS MIXED USED WITH RESIDENTIAL GROUP R-2 AS THE MAIN OCCUPANCY AND BUSINESS GROUP B AS A NONSEPARATED OCCUPANCY
- ALLOWABLE BUILDING HEIGHT IS 75' FOR BUILDINGS WITH AN AUTOMATIC SPRINKLER SYSTEM AND PROPOSED BUILDING HEIGHT IS APPROXIMATELY 16'-6"
- ALLOWABLE NUMBER OF STORIES IS 5 FOR BUILDINGS WITH AN AUTOMATIC SPRINKLER SYSTEM AND PROPOSED NUMBER OF STORIES IS 1
- ALLOWABLE BUILDING AREA IS 64,000 SF FOR BUILDINGS WITH AN AUTOMATIC SPRINKLER SYSTEM AND PROPOSED BUILDING GROSS SQUARE FOOTAGE IS 3,600
- BUILDING CONSTRUCTION IS TYPE IIB
- STRUCTURAL FIRE-RESISTANT RATING REQUIREMENTS IS 0 HOURS
- AN AUTOMATIC SPRINKLER SYSTEM IS REQUIRED AND PROPOSED
- EGRESS CALCULATIONS = 20 OCCUPANTS X 0.2' = 4' EGRESS WIDTH REQUIRED WITH 68' EGRESS WIDTH PROPOSED
- ALLOWABLE MAXIMUM TRAVEL DISTANCE IS 250'-0" AND MAXIMUM DISTANCE PROPOSED IS 132'-5"
- REFER TO LIFE SAFETY PLAN FOR ADDITIONAL INFORMATION

### OCCUPANT LOAD CALCULATIONS

- SPACES CALCULATED AS DORMITORY AT 50 SF PER OCCUPANT = SPACES 116, 117, 118, 119 AND 120 = 516 SF = 10.32 OCCUPANTS
- SPACES CALCULATED AS BUSINESS AT 150 SF PER OCCUPANT = SPACES 103, 106, 107 AND 108 = 582 SF = 3.88 OCCUPANTS
- SPACES CALCULATED AS RESIDENTIAL AT 200 SF PER OCCUPANT = SPACES 110, 111 AND 115 = 686 SF = 3.43 OCCUPANTS
- SPACES CALCULATED AS STORAGE / UTILITY AT 300 SF PER OCCUPANT = SPACES 104, 104A, 109, 109A AND 112 = 499 SF = 1.47 OCCUPANTS
- TOTAL OCCUPANT LOAD FOR RESIDENTIAL GROUP R-2 OCCUPANCY = 10.32 + 3.43 + 1.47 = 15.22 OCCUPANTS = 16 TOTAL OCCUPANTS
- TOTAL OCCUPANT LOAD FOR BUSINESS GROUP B OCCUPANCY = 3.88 OCCUPANTS = 4 OCCUPANTS
- NUMBER OF EXITS REQUIRED IS TWO WITH TWO PROVIDED
- REFER TO THE LIFE SAFETY PLAN FOR ADDITIONAL INFORMATION

### PLUMBING FIXTURE CALCULATIONS

- TOTAL OCCUPANT LOAD FOR RESIDENTIAL GROUP R-2 = 16 OCCUPANTS = 8 MALE AND 8 FEMALE
- RESIDENTIAL GROUP R-2 OCCUPANCY TOTAL WC = 1 PER 10 FOR MALE AND FEMALE = 1 WC REQUIRED FOR EACH WITH 1 PROPOSED FOR EACH
- RESIDENTIAL GROUP R-2 OCCUPANCY TOTAL LAV = 1 PER 10 FOR MALE AND FEMALE = 1 LAV REQUIRED FOR EACH WITH 1 PROPOSED FOR EACH
- RESIDENTIAL GROUP R-2 OCCUPANCY SHOWERS = 1 PER 8 REQUIRED = 2 REQUIRED WITH 2 PROPOSED
- RESIDENTIAL GROUP R-2 OCCUPANCY SERVICE SINKS = 1 REQUIRED WITH 1 PROPOSED
- RESIDENTIAL GROUP R-2 OCCUPANCY DRINKING FOUNTAINS = 1 PER 100 REQUIRED WITH 1 PROPOSED
- TOTAL OCCUPANT LOAD FOR BUSINESS GROUP B = 4 OCCUPANTS = 2 MALE AND 2 FEMALE
- BUSINESS GROUP B OCCUPANCY TOTAL WC = 1 PER 25 FOR FIRST 50 AND 1 PER 50 FOR THE REMAINDER EXCEEDING 50 FOR MALE AND FEMALE = 1 WC REQUIRED TOTAL PER FBG-P 403.2.4 WITH 1 PROPOSED
- BUSINESS GROUP B OCCUPANCY TOTAL LAV = 1 PER 40 FOR FIRST 80 AND 1 PER 80 FOR THE REMAINDER EXCEEDING 80 FOR MALE AND FEMALE = 1 LAV REQUIRED TOTAL PER FBG-P 403.2.4 WITH 1 PROPOSED
- BUSINESS GROUP B OCCUPANCY SHOWERS = 0 WITH 0 PROPOSED
- BUSINESS GROUP B OCCUPANCY SERVICE SINKS = 0 PER FBG-P 403.1, E WITH 0 PROPOSED
- BUSINESS GROUP B OCCUPANCY DRINKING FOUNTAINS = 0 PER FBG-P 410.2 WITH 0 PROPOSED

### DEFERRED DOCUMENTATION

AS REQUIRED BY FLORIDA STATUTE 553.842 AND FLORIDA ADMINISTRATIVE CODE 9N-3.006, THE CONTRACTOR IS TO PROVIDE THE INFORMATION AND THE PRODUCT APPROVAL NUMBERS ON THE BUILDING COMPONENTS THAT WILL BE UTILIZED ON THIS PROJECT

### SHEET INDEX

- G-1** GENERAL COVER SHEET
- LS-1** LIFE SAFETY PLAN
- A-1** FLOOR PLAN
- A-2** DIMENSION PLAN
- A-3** ROOF PLAN AND REFLECTED CEILING PLAN
- A-4** EXTERIOR ELEVATIONS
- A-5** BUILDING SECTIONS
- A-6** ENLARGED PLANS AND INTERIOR ELEVATIONS
  
- S0.1** GENERAL STRUCTURAL NOTES
- S0.2** GENERAL STRUCTURAL NOTES
- S0.3** ABBREVIATIONS, SYMBOL LEGEND AND WIND LOAD INFORMATION
- S1.1** FOUNDATION AND GROUND FLOOR PLAN
- S3.1** FOUNDATION SECTIONS AND DETAILS
- S3.2** MASONRY SECTIONS AND DETAILS
  
- M001** HVAC GENERAL NOTES AND LEGEND
- M111** HVAC FLOOR PLAN
- M201** HVAC DETAILS
- M301** HVAC SCHEDULES
- M401** HVAC SPECIFICATIONS
  
- P001** PLUMBING GENERAL NOTES AND LEGEND
- P111** GRAVITY PIPING FLOOR PLAN
- P211** PRESSURE PIPING FLOOR PLAN
- P301** PLUMBING RISER DIAGRAMS
- P401** PLUMBING DETAILS
- P402** PLUMBING DETAILS
- P501** PLUMBING SCHEDULES
- P601** PLUMBING SPECIFICATIONS
  
- FP001** FIRE PROTECTION GENERAL NOTES AND LEGEND
- FP111** FIRE PROTECTION FLOOR PLAN
  
- E001** ELECTRICAL LEGEND AND SPECIFICATIONS
- E201** ELECTRICAL LIGHTING PLAN
- E202** ELECTRICAL POWER AND SYSTEMS PLAN
- E203** FIRE ALARM PLAN
- E301** POWER RISER AND SCHEDULES
- E401** ELECTRICAL DETAILS