



*CJ Custom Carpentry, Inc  
222 SW Cross Pointe Ct  
Lake City, FL 32024  
386-754-6924 Office  
386-754-4116 Fax  
CGC151322*

**Diane Harrell  
374 SW Shortleaf Dr.  
Lake City, FL 32024**

Back patio door replacement

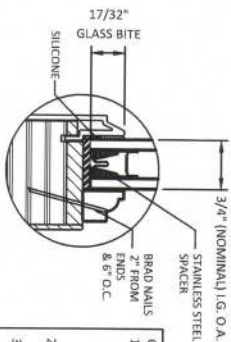
Remove existing and replace back patio door, size for size with Andersen E-Series patio door. Florida Product Approval #25570. Installation instructions/engineering documents attached for review.

# ANDERSEN CORPORATION

## E-SERIES HINGED PATIO DOOR - INSWING (NON-HVHZ) (NON-IMPACT)

### GENERAL NOTES:

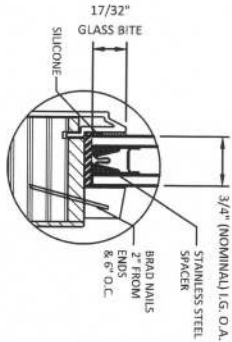
1. THE PRODUCT SHOWN HEREIN IS DESIGNED AND MANUFACTURED TO COMPLY WITH THE CURRENT EDITION FLORIDA BUILDING CODE (FBC), EXCLUDING HVHZ AND HAS BEEN EVALUATED ACCORDING TO THE FOLLOWING:
  - AAMA/WDMA/CSA 101/15.2/AM40-08/11
2. ADEQUACY OF THE EXISTING STRUCTURAL CONCRETE/MASONRY, 2X AND METAL STUD FRAMING AS A MAIN WIND FORCE RESISTING SYSTEM CAPABLE OF WITHSTANDING AND TRANSFERRING APPLIED PRODUCT LOADS TO THE FOUNDATION IS THE RESPONSIBILITY OF THE ENGINEER OR ARCHITECT OF RECORD FOR THE PROJECT OF INSTALLATION.
3. 1X AND 2X BUCKS (WHEN USED) SHALL BE DESIGNED AND ANCHORED TO PROPERLY TRANSFER ALL LOADS TO THE STRUCTURE. BUCK DESIGN AND INSTALLATION IS THE RESPONSIBILITY OF THE ENGINEER OR ARCHITECT OF RECORD FOR THE PROJECT OF INSTALLATION.
4. THE INSTALLATION DETAILS DESCRIBED HEREIN ARE GENERIC AND MAY NOT REFLECT ACTUAL CONDITIONS FOR A SPECIFIC SITE. IF SITE CONDITIONS CAUSE INSTALLATION TO DEVIATE FROM THE REQUIREMENTS DETAILED HEREIN, A LICENSED ENGINEER OR ARCHITECT SHALL PREPARE SITE SPECIFIC DOCUMENTS FOR USE WITH THIS DOCUMENT.
5. APPROVED IMPACT PROTECTIVE SYSTEM IS REQUIRED TO PROTECT THIS PRODUCT IN AREAS REQUIRING IMPACT RESISTANCE.
6. WINDOW FRAME MATERIAL: ALUMINUM CLAD WOOD.
7. MULLION MATERIAL: LAMINATED VENEER LUMBER.
8. GLASS SHALL MEET THE REQUIREMENTS OF ASTM E300. SEE SHEET 1 FOR GLAZING DETAILS.
9. DESIGNATIONS "X", "A" AND "O" STAND FOR THE FOLLOWING:
  - X: OPERABLE PANEL
  - O: FIXED PANEL
10. CUSTOM SIZES AVAILABLE UPON REQUEST. CUSTOM DESIGN PRESSURE WILL BE ASSIGNED EQUAL TO NEXT LARGER STANDARD SIZE.



**GLAZING DETAIL - G1**  
SHOWN WITH COLONIAL GLASS STOP

- GLAZING NOTES:**
1. GLASS TYPE & THICKNESS SHALL COMPLY WITH ASTM E300 REQUIREMENTS AS WELL AS APPLICABLE SAFETY GLAZING REQUIREMENTS PER THE FBC. TEMPER AND SAFETY GLAZING REQUIREMENTS SHALL BE REVIEWED ON A SITE SPECIFIC BASIS.
  2. SETTING BLOCK DUREMETER HARDNESS OF 70-90 (SHORE A) AS REFERENCED IN FBC CHAPTER 24.
  3. SETTING BLOCKS TO BE LOCATED AT 1/4 SPAN LENGTH FOR GLASS WIDER THAN 36" AS PER FBC CHAPTER 24.
  4. DESIGN PRESSURE TABLE ON SECTION 2.0.

GLASS STOP PROFILES ARE INTERCHANGEABLE



**GLAZING DETAIL - G2**  
SHOWN WITH CONTEMPORARY GLASS STOP

### TABLE OF CONTENTS

SECTION	REVISION	SHEET DESCRIPTION
1.0	C	GENERAL NOTES & GLAZING DETAIL
2.0	C	ELEVATIONS AND CONFIGURATION
3.0	C	VERTICAL SECTIONS
4.0	C	HORIZONTAL SECTIONS
5.0	C	PANELS & SIDELITES DETAILS
6.0	C	HARDWARE LOCATIONS
7.0	C	ANCHOR LAYOUT
8.0	C	ANCHOR DETAILS, SCHEDULE & NOTES
9.0	C	MULLION TABLES

300 FOURTH AVE. NORTH  
BAYWIRE, MN 55003-1096  
PH: (651) 264-5150 FX: (651) 264-5485

**TITLE:**  
E-SERIES HINGED PATIO DOOR - INSWING  
(NON IMPACT) (NON HVHZ)  
GENERAL NOTES & GLAZING DETAIL

**PREPARED BY:**  
BUILDING DROPS, INC.  
398 E. DANIA BEACH BLVD., STE. 338  
DANIA BEACH, FL 33004  
PH: (954) 339-8438  
FAX: (954) 744-4738  
WEB: www.buildingdrops.com

**REMARKS**

BY	DATE
HR	4.11.19
HR	7.2.18
LL	8.2.19

THE INFORMATION CONTAINED HEREIN IS THE PROPERTY OF ANDERSEN CORPORATION. IT IS TO BE USED ONLY FOR THE PROJECT AND SITE SPECIFIC CONDITIONS. NO PART OF THIS DOCUMENT IS TO BE REPRODUCED OR TRANSMITTED IN ANY FORM OR BY ANY MEANS, ELECTRONIC OR MECHANICAL, INCLUDING PHOTOCOPYING, RECORDING, OR BY ANY INFORMATION STORAGE AND RETRIEVAL SYSTEM, WITHOUT THE WRITTEN PERMISSION OF ANDERSEN CORPORATION.

HERNAN F. ANDERSON, P.E.  
FLORIDA P.E. NO. 73778  
398 E. DANIA BEACH BLVD., STE. 338  
DANIA BEACH, FL 33004  
PHONE: (954) 339-8438  
FAX: (954) 744-4738  
WWW.BUILDINGDROPS.COM

FL #: **FL25570**

DATE: **10.02.17**

DWG. BY: **RV** CHK. BY: **HFN**

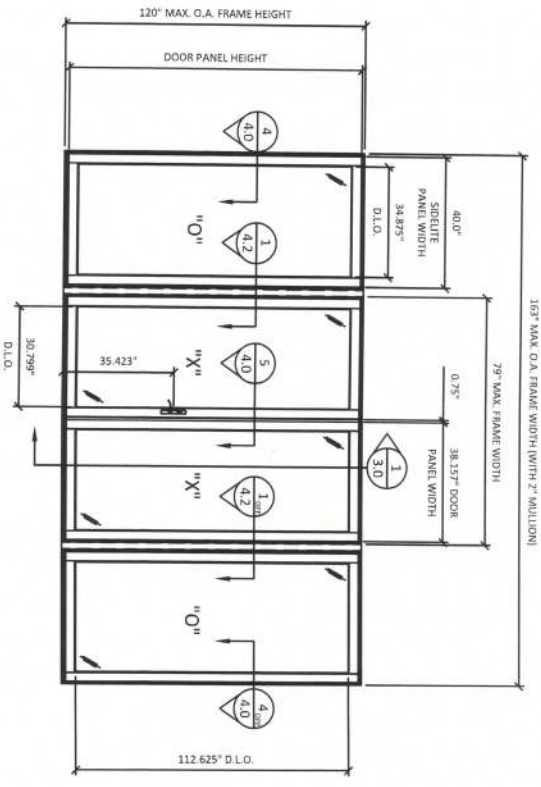
SCALE: **NTS**

DWG. #: **AWD229**

SECTION

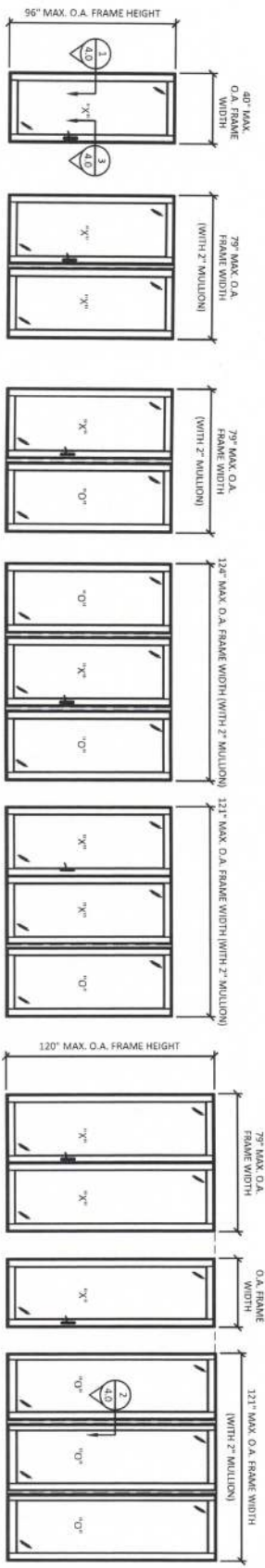
**10**

Page 1 of 25



**ELEVATION**  
INSWING DOOR WITH 2" MULLION

**OTHER QUALIFIED CONFIGURATIONS**



CONFIGURATION	WIDTH	HEIGHT	PANEL TYPE	PG	DESIGN PRESSURE	PASSIVE LOCK
X	40.0	96.0	Radius	PG 43	+45/-35	N/A
X	40.0	102.0	SP1, SP2, SP4, SP1R1, SP1R2, SP2R3, SP2M1, SP2M2, SP2M3	PG 45	+45/-65	N/A
X	40.0	120.0	SP1, SP2, SP1R1, SP1R2, SP2R3, SP2M1, SP2M2	PG 45	+45/-65	N/A
X	40.5	120.0	SP4, SP5	PG 45	+/-45	N/A
XX	79.0	96.0	SP1, SP2, SP1R1, SP1R2, SP2R3, SP2M1, SP2M2	PG 35	+/-35	Option 4
XX	79.0	96.0	SP1, SP2, SP1R1, SP1R2, SP2R3, SP2M1, SP2M2, SP2M3, Radius	PG 40	+/-40	Option 1,2,3
XO	79.0	96.0	SP1, SP2, SP4, SP5, SP1R1, SP1R2, SP2R3, SP2M1, SP2M2, SP2M3	PG 45	+/-45	N/A
XX	79.0	102.0	SP1, SP2, SP1R1, SP1R2, SP2R3, SP2M1, SP2M2	PG 30	+/-30	Option 1,2,3
XX	79.0	102.0	SP4, SP5	PG 30	+35/-40	Option 1
XX	79.0	120.0	SP1, SP2, SP1R1, SP1R2, SP2R3, SP2M1, SP2M2	PG 35	+/-35	Option 1,2,3
XX	79.0	120.0	SP4, SP5	PG 30	+/-40	Option 1
OO	79.0	96.0	SP1, SP2, SP4, SP5, SP1R1, SP1R2, SP2R3, SP2M1, SP2M2, SP2M3	PG 40	+/-40	N/A
X	24.5	96.0	S11, S12, S1R1, S1R2, S2R3, S2M1, S2M2, S2M3	PG 40	+/-40	N/A
O	40.0	96.0	Radius	PG 45	+45/-55	N/A
O	40.0	120.0	SP1, SP2, SP1R1, SP1R2, SP2R3, SP2M1, SP2M2, SP2M3	PG 45	+45/-40	N/A
O	40.0	120.0	SP4, SP5	PG 45	+/-45	N/A
O	79.0	240.0	S11, S12, S1R1, S1R2, S1R3, S1R4, S1R5, S1R6, S1R7	PG 60	+/-60	N/A

**NOTE:**  
1. REFER TO SECTION 9 FOR DESIGN PRESSURES BASED ON CORRESPONDING MULLION TYPES.

\* LOW THRESHOLD SILES HAVE DP 0 WATER RATING.

**Andersen**  
100 FOURTH AVE. NORTH  
BAYPORT, MN 55003-1096  
PH: (651) 264-5150 FX: (651) 264-5485

**Andersen**  
100 FOURTH AVE. NORTH  
BAYPORT, MN 55003-1096  
PH: (651) 264-5150 FX: (651) 264-5485

**TITLE:**  
E-SERIES HINGED PATIO DOOR - INSWING  
(NON IMPACT) (NON HVHZ)  
ELEVATIONS & CONFIGURATIONS

**PREPARED BY:**  
BUILDING DROPS, INC.  
398 E. SANIA BEACH BLVD., STE. 338  
DANIA BEACH, FL 33004  
PH: (954) 939-8478  
FAX: (954) 744-4738  
WEB: www.buildingdrops.com

**REMARKS:**

TEST STANDARDS UPDATE HR 7.2.18

1/2" LV1 MULLION ADDITION HR 4.11.19

APPROVED BY: X.S. SAHAY, V.P. & PR. CHIEF LL 8.2.19

**FL #:** FL25570

**DATE:** 10.02.17

**DWG BY:** RV **CHK BY:** HFN

**SCALE:** NTS

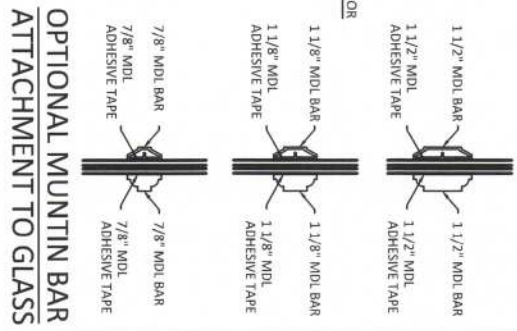
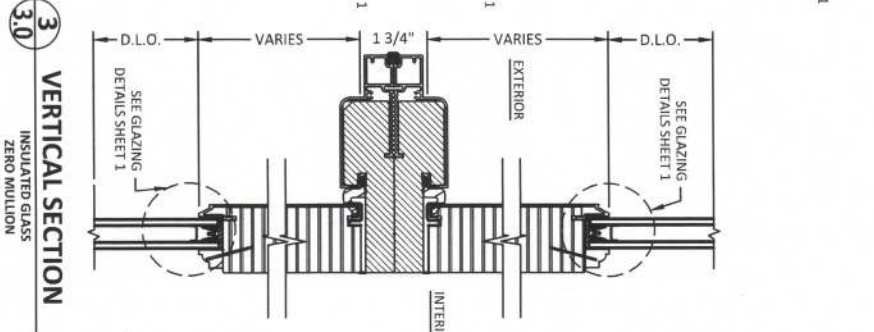
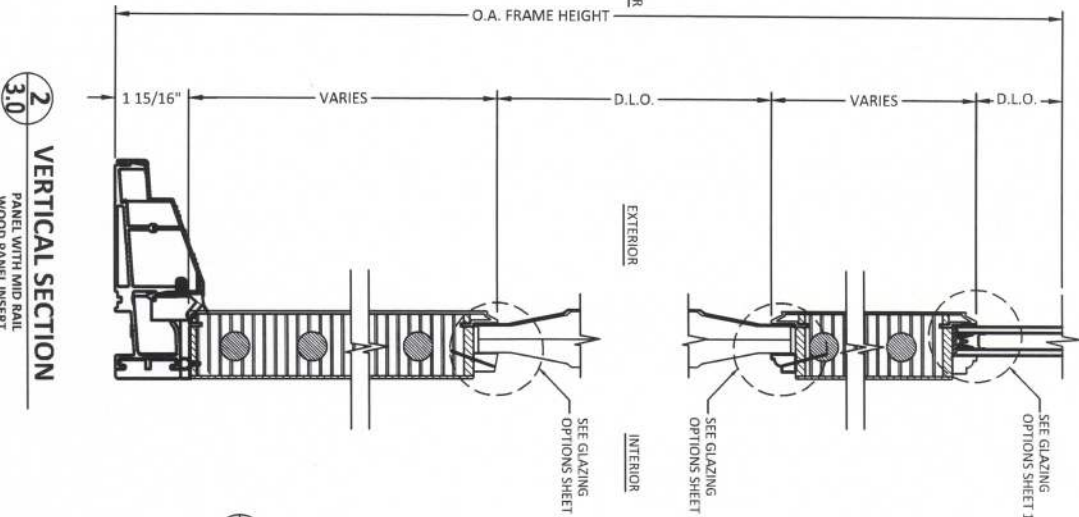
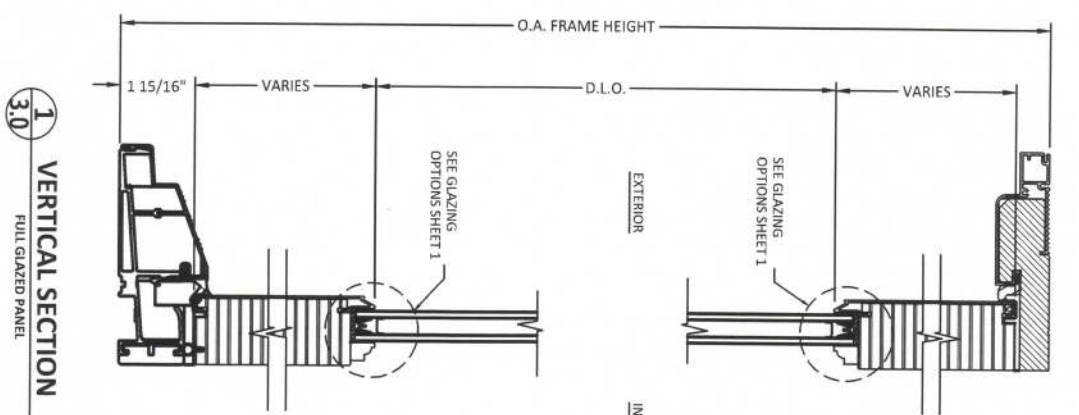
**DWG #:** AWD229

**SECTION:**

HERIBERTO HERNANDEZ  
PROFESSIONAL ENGINEER  
STATE OF FLORIDA  
NO. 73778

HERNANDEZ, HERIBERTO, P.E.  
FLORIDA P.E. NO. 73778  
398 E. SANIA BEACH BLVD., STE. 338  
DANIA BEACH, FL 33004  
PH: (954) 939-8478  
FAX: (954) 744-4738  
WWW.BUILDINGDROPS.COM

**20**  
Page 2 of 25

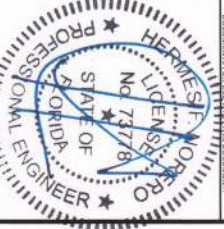


**1**  
3.0 VERTICAL SECTION  
FULL GLAZED PANEL

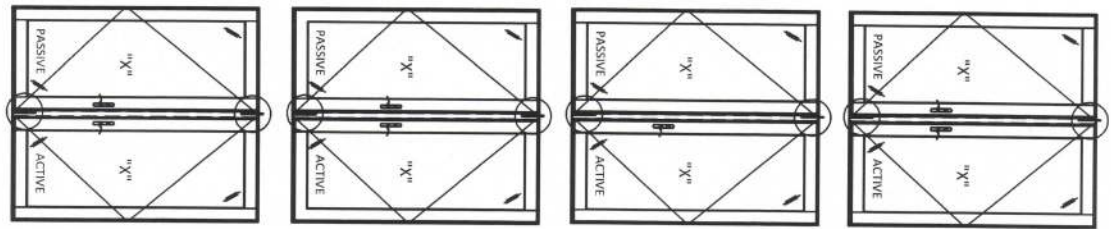
**2**  
3.0 VERTICAL SECTION  
PANEL WITH MID RAIL  
WOOD PANEL INSERT

**3**  
3.0 VERTICAL SECTION  
INSULATED GLASS  
ZERO MULLION

<p>100 FOURTH AVE. NORTH BAYPORT, MN 55003-0096 PH: (651) 264-5150 FX: (651) 264-5485</p>	<p><b>TITLE:</b> E-SERIES HINGED PATIO DOOR - INSWING (NON IMPACT) (NON HVHZ) VERTICAL SECTIONS</p>
	<p><b>PREPARED BY:</b> BUILDING DROPS, INC. 398 E. DANIA BEACH BLVD., STE. 338 DANIA BEACH, FL 33004 PH: (954)999-8478 FAX: (954)744-4738 WEB: www.buildingdrops.com</p>
<p><b>REMARKS:</b> TEST STANDARDS UPDATE 1/2" LVJ MULL ADDITION</p>	<p><b>BY DATE:</b> HR 7.2.18 HR 4.11.19 LL 8.2.19</p>
<p><b>FL#:</b> FL25570 <b>DATE:</b> 10.02.17 <b>DWG. BY:</b> RV <b>CHK. BY:</b> HFN <b>SCALE:</b> NTS <b>DWG. #:</b> AWD229</p>	
<p><b>SECTION:</b> 3.0 Page 4 of 25</p>	



HERNANDEZ F. ANDERSON, P.E.  
FLORIDA P.E. NO. 73778  
398 E. DANIA BEACH BLVD., STE. 338  
DANIA BEACH, FL 33004  
PHONE: (954) 999-8478  
FAX: (954) 744-4738  
WWW.BUILDINGDROPS.COM



**OPTION 1  
(AW HARDWARE)**

**ACTIVE LEAF:**  
AUTOLATCH® MULTIPoint LOCK SYSTEM, 105MM LOCK TO HANDLE SPACING, 50 MM LOCK/HANDLE BACKSET.  
**PASSIVE LEAF:**  
HANDI OPERATED SHOOT BOLT THROUGH ASTRAGAL, LATCH AND DEADBOLT BLOCKERS

**OPTION 2  
(TYPE I)**

**ACTIVE LEAF:**  
AUTOLATCH® MULTIPoint LOCK SYSTEM, 92MM LOCK TO HANDLE SPACING, 45 MM LOCK/HANDLE BACKSET.  
**PASSIVE LEAF:**  
MANUALLY OPERATED MORITSE LEVER SHOOT BOLT THROUGH ASTRAGAL, NO HANDLE.

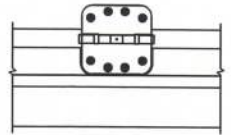
**OPTION 3  
(TYPE II)**

**ACTIVE LEAF:**  
AUTOLATCH® MULTIPoint LOCK SYSTEM, 92MM LOCK TO HANDLE SPACING, 45 MM LOCK/HANDLE BACKSET.  
**PASSIVE LEAF:**  
MANUALLY OPERATED MORITSE LEVER SHOOT BOLT THROUGH ASTRAGAL, DIMMYV HANDLE

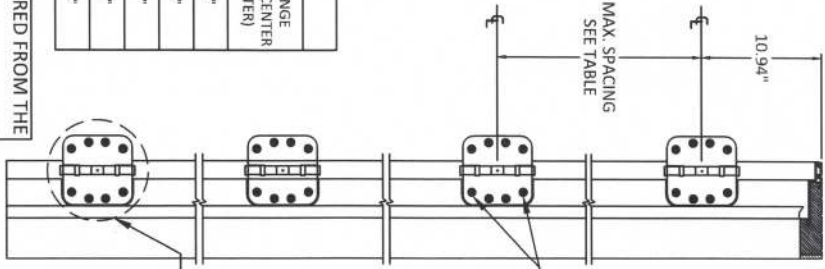
**OPTION 4  
(TYPE III)**

**ACTIVE LEAF:**  
AUTOLATCH® MULTIPoint LOCK SYSTEM, 92MM LOCK TO HANDLE SPACING, 45 MM LOCK/HANDLE BACKSET.  
**PASSIVE LEAF:**  
HANDI OPERATED SHOOT BOLT THROUGH THE HANDLE, THUMB TURN LOCK LIMITED PERFORMANCE FOR OPTION 4

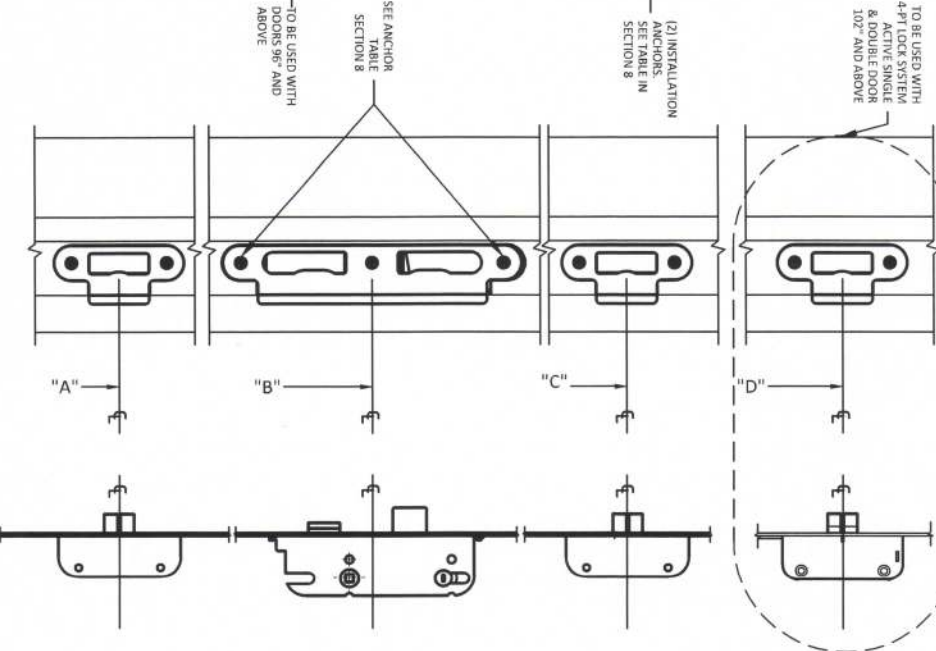
**HINGE DETAIL**



**HINGE LOCATIONS  
USE #12 SCREW TYP.**



**STRIKE LOCATION  
USE #8 SCREW TYP.**



HINGE LOCATIONS				
FRAME OPENING HEIGHT	ACTUAL DOOR HEIGHT	MAX. HINGE SPACING (CENTER TO CENTER)	"A"	"B"
80.5"	80"	28.52"		
84.5"	84"	30.52"		
96.5"	96"	24.35"		
102.5"	102"	26.35"		
120.5"	120"	32.35"		

STRIKE CL LOCATION MEASURED FROM THE BOTTOM					
FRAME OPENING HEIGHT	ACTUAL DOOR HEIGHT	"A"	"B"	"C"	"D"
80.5"	80"			67.469"	
84.5"	84"				N/A
96.5"	96"	14.875"	36.875"	79.675"	
102.5"	102"				
120.5"	120"			67.469"	108.375"

**STRIKE PLATE LOCATIONS  
@ ASTRAGAL/JAMB**

**3-PT / 4-PT LOCK SYSTEM  
ACTIVE / SINGLE DOOR**

APPLIES TO ALL LOCK OPTIONS

**Andersen**  
WINDOORS - DOORS

100 FOURTH AVE. NORTH  
DAVENPORT, FLN 32803-1096  
PH: (851) 264-5150 FX: (851) 264-5485

**TITLE:**  
E-SERIES HINGED PATIO DOOR - INSWING  
(NON IMPACT) (NON HVHZ)  
HARDWARE LOCATIONS

**PREPARED BY:**  
BUILDING DROPS, INC.  
398 E. DANIA BEACH BLVD., STE. 338  
DANIA BEACH, FL 33004  
PH: (954)999-8478  
FAX: (954)744-4738  
WEB: www.buildingdrops.com

**REMARKS:**

TEST STANDARDS UPDATE HR 7.2.18

1/2" LVJ WALL ADDITION HR 4.11.19

ADDED 3/4" X 8.5mm WALL & BR CHAMFER LL 8.2.19

**HERNANDEZ**  
FLORIDA PROFESSIONAL ENGINEER  
NO. 73176  
STATE OF FLORIDA

HENRICH F. ANDERSON, P.E.  
FLORIDA P.E. NO. 73778  
398 E. DANIA BEACH BLVD., STE. 338  
DANIA BEACH, FL 33004  
PH: (954) 999-8478  
FAX: (954) 744-4738  
WWW.BUILDINGDROPS.COM

**FL #:**  
FI25570

**DATE:**  
10.02.17

**DWG. BY:**  
RV

**CHK. BY:**  
HFN

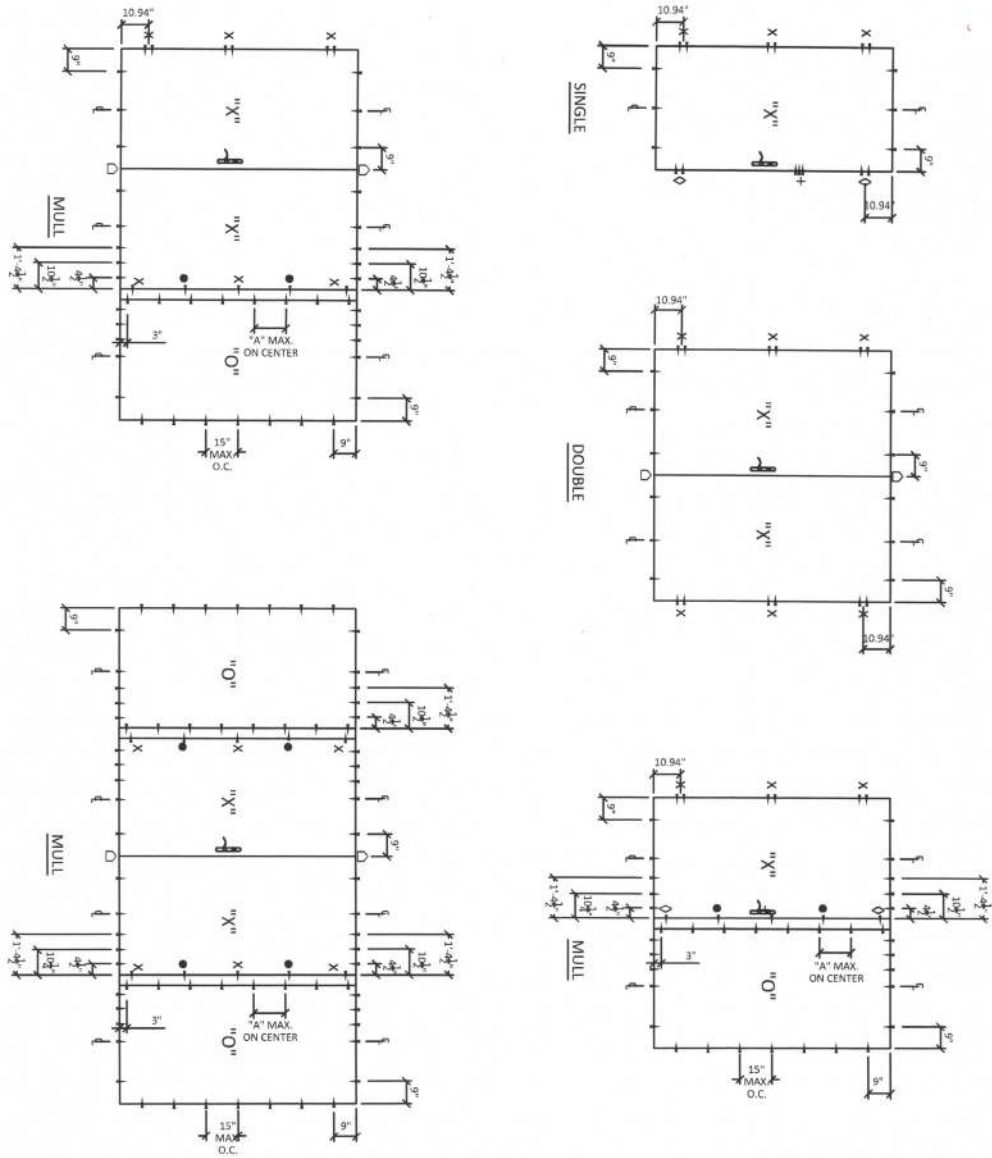
**SCALE:**  
NTS

**DWG. #: AWD229**

**SECTION:**

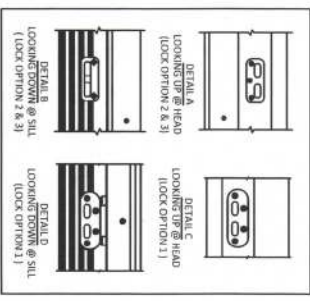
**60**  
Page 11 of 25

# ANCHOR LAYOUT



ACTIVE DOOR LEGEND 'X'	
X	TWO (2) ANCHOR THRU HINGE PLATE ANCHORS THRU END RECEIVER - WOOD OR METAL: THREE (3) - CONCRETE / MASONRY: TWO (2)
+	ANCHORS THRU CENTER RECEIVER - WOOD OR METAL: TWO (2) - CONCRETE / MASONRY: TWO (2)
□	ANCHORS THRU STRIKE HEAD PLATE - WOOD OR STEEL: TWO (2) - CONCRETE: TWO (2) DETAIL A - WOOD OR STEEL: FOUR (4) - CONCRETE: TWO (2) ANCHORS THRU STRIKE SILL PLATE DETAIL B - WOOD OR STEEL: TWO (2) - CONCRETE: TWO (2) DETAIL C - WOOD OR STEEL: FOUR (4) - CONCRETE: TWO (2)
•	ANCHOR MID-SPAN BETWEEN HINGERS AND STRIKE PLATES

NOTE:  
ANCHOR LOCATIONS APPLY TO SCREWS THROUGH FRAME, ALUMINUM NAIL FIN & STRAP INSTALLATION.



**Andersen**  
WINDOWS • DOORS

100 HOLLYHURST AVENUE, NORTH  
BAYWATER, MA 01909-1096  
PH: (951) 264-5100 FX: (951) 264-5485

**PREPARED BY:**  
**BUILDING DROPS, INC.**  
388 E. DANIA BEACH BLVD., STE. 332  
DANIA BEACH, FL 33004  
PH: (954) 959-8478  
FAX: (954) 744-4738  
WEB: www.buildingdrops.com

**TITLE:**  
E-SERIES HINGED PATIO DOOR - INSWING  
(NON IMPACT) (NON HVHZ)  
ANCHOR LAYOUTS

**REMARKS:**  
TEST STANDARDS UPDATE  
1/2" LVL MULL ADDITION

**DATE:** 10.02.17

**BY:** HR 4.11.19  
**DATE:** HR 7.2.18

**FL #:** FL25570

**DATE:** 10.02.17

**DWG. BY:** RV  
**CHK. BY:** HFN

**SCALE:** NTS

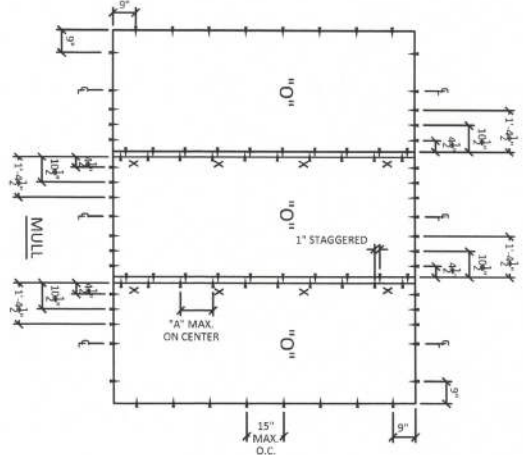
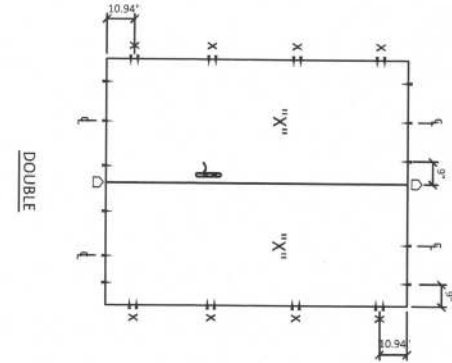
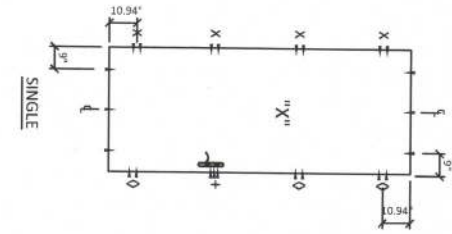
**DWG. #:** AWD229

**HERNANDEZ, F. NORBERTO**  
STATE OF FLORIDA  
LICENSED PROFESSIONAL ENGINEER  
NO. 7778

**HENRIK F. HANSEN, P.E.**  
FLORIDA P.E. NO. 79778  
388 E. DANIA BEACH BLVD., STE. 332  
DANIA BEACH, FL 33004  
PHONE: (954) 959-8478  
FAX: (954) 744-4738  
WWW.BUILDINGDROPS.COM

**70**  
Page 12 of 25

# ANCHOR LAYOUT (Cont.)



ACTIVE DOOR LEGEND "X"	ANCHOR MID-SPAN BETWEEN HINGES AND STRIKE PLATES
X	ANCHOR MID-SPAN BETWEEN HINGES AND STRIKE PLATES
Ø	ANCHOR THRU END RECEIVER - WOOD OR METAL: THREE (3) - CONCRETE / MASONRY: TWO (2)
+	ANCHOR THRU CENTER RECEIVER - WOOD OR STEEL: THREE (3) - CONCRETE / MASONRY: TWO (2)
□	ANCHORS THRU STRIKE HEAD PLATE - WOOD OR STEEL: TWO (2) - CONCRETE: TWO (2) DETAIL C: - WOOD OR STEEL: FOUR (4) - CONCRETE: TWO (2) ANCHORS THRU STRIKE SILL PLATE: DETAIL E: - WOOD OR STEEL: TWO (2) - CONCRETE: TWO (2) DETAIL D: - WOOD OR STEEL: FOUR (4) - CONCRETE: TWO (2)

DETAIL A	DETAIL B	DETAIL C	DETAIL D
LOOKING UP @ HEAD (LOCK OPTION 2 & 3)	LOOKING DOWN @ SILL (LOCK OPTION 2 & 3)	LOOKING UP @ HEAD (LOCK OPTION 1)	LOOKING DOWN @ SILL (LOCK OPTION 1)

DESIGN PRESSURE	"A" DIMENSION
UP TO 65 PSF	13" MAX O.C.

**Andersen**  
200 FOURTH AVE. NASHVILLE, TN 37203  
PH: (615) 264-5150 FX: (615) 264-5485

**AW**

**Andersen**  
200 FOURTH AVE. NASHVILLE, TN 37203  
PH: (615) 264-5150 FX: (615) 264-5485

**Andersen**  
200 FOURTH AVE. NASHVILLE, TN 37203  
PH: (615) 264-5150 FX: (615) 264-5485

**Andersen**  
200 FOURTH AVE. NASHVILLE, TN 37203  
PH: (615) 264-5150 FX: (615) 264-5485

**HERNANDEZ ENGINEERING**  
STATE OF FLORIDA  
PROFESSIONAL ENGINEER  
NO. 73776  
DANIA BEACH, FL 33004  
PH: (954) 744-4738  
FX: (954) 744-4738  
WWW.HERNANDEZENGINEERING.COM

**HERNANDEZ ENGINEERING**  
STATE OF FLORIDA  
PROFESSIONAL ENGINEER  
NO. 73776  
DANIA BEACH, FL 33004  
PH: (954) 744-4738  
FX: (954) 744-4738  
WWW.HERNANDEZENGINEERING.COM

**FL #:** FL25570

**DATE:** 10.02.17

**DWG. BY:** RV

**CHK. BY:** HFN

**SCALE:** NTS

**DWG. #:** AWD229

**SECTION:**

**71**

Page 13 of 25