

CODE INFORMATION

CODE VERSION	IBC 2006 PB 8001.102-7-10
MANUFACTURER	CLAYTON BRIDGES
BUILDING TYPE	UTILITY STRUCTURE
CONSTRUCTION TYPE	2-B
RISK CATEGORY	1
FIRE PROTECTION	NONE
FIRE SUPPRESSION SYSTEM	NONE
OCCUPANCY	UTILITY
BASIC WIND SPEED	70 (100-100mph)
EXPOSURE	3/C
ENCLOSURE	OPEN
INTERNAL PRESSURE COEFFICIENT	+/- 0.8
RESPONSE FACTOR	1.0
ROOF DEAD LOAD	10PP
ROOF LIVE LOAD	20PP (BY 100 YD LENS)
FLOOR DEAD LOAD	10PP
FLOOR LIVE LOAD	20PP
TYP. RATINGS OF WALLS, FLOOR, ROOF	2/A
WALLS NOT BUILDING	1
HURRICANE PROTECTION USAGE	10
HURRICANE SHELTER USAGE	10
SQUARE FOOTAGE	

REVISIONS

REV	DESCRIPTION	DATE	BY

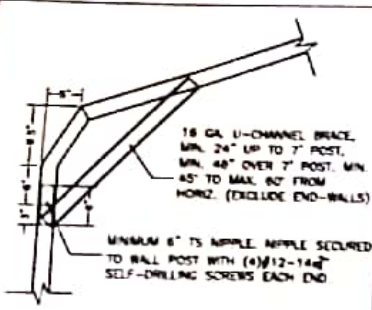
Spec No: MTS
 Date: 5/27/20
 Location: FLORIDA
 Project: OPEN GENERIC ENGINEERING

- GENERAL NOTES
- THIS BUILDING IS EXEMPT FROM THE FBC ENERGY CONSERVATION CODE PER SECTION C101-4.3.
 - ALL STEEL FINISH SHALL BE 30 KSI STEEL.
 - PLUMBING, ELECTRICAL, INGRESS/EGRESS, PROPERTY SET-BACKS, AND/OR OTHER LOCAL CODE REQUIREMENTS ARE THE RESPONSIBILITY OF THE OWNER.
 - ROOF AND WALL SHEATHING SECURED WITH #12-14x1" SELF-DRILLING SCREWS WITH SEAL WASHERS @ 6" O.C. MAX.
 - FIELD FINISH CONNECTIONS SECURED WITH #12-14x1/2" SELF-DRILLING SCREWS.
 - ALL SHOP FINISH CONNECTIONS ARE TO BE WELDED. NO BELDING CHAIRS. ALL WELDING DONE IN SHOP BY A CERTIFIED WELDER.
 - CONCRETE EXPANSION JOINTS ARE TO BE MINIMUM 1/2" LF, 3,000 LB TENSILE FINISHING, 5.12 OR 14GA FINISHING @ 2.5" x 2.5" TUBE STEEL. NIPPLES ARE 2.5" x 2.5" TUBE STEEL.

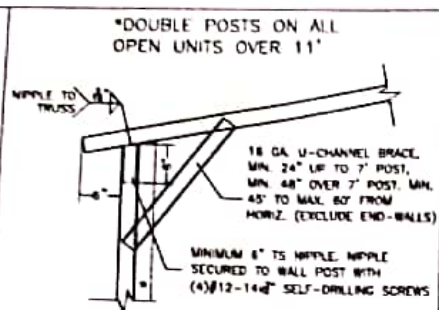
DETAILS

Matthew T. Babin P.E.
 Florida License #64608

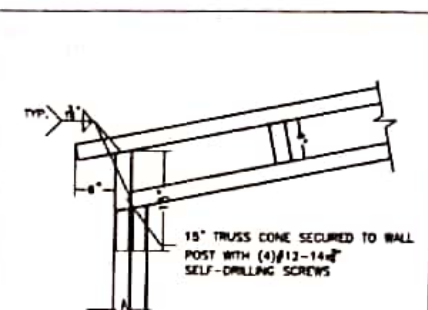
Sheet: CA-2 OF 3



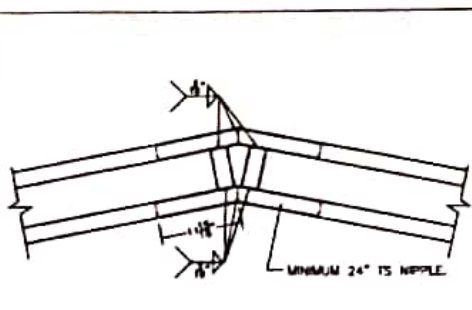
BOW RAFTER TO POST CONNECTION DETAIL



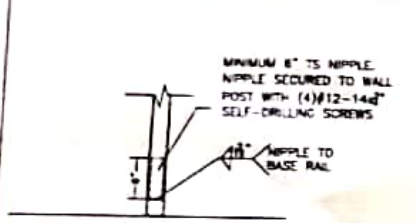
BOX EAVE RAFTER TO POST CONNECTION DETAIL



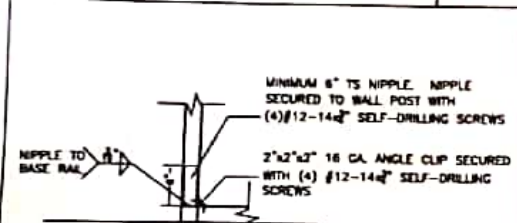
40" BOX EAVE RAFTER TO POST CONNECTION DETAIL



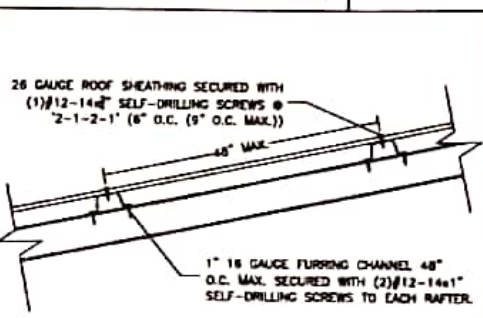
TRUSSED RAFTER CONNECTION DETAIL



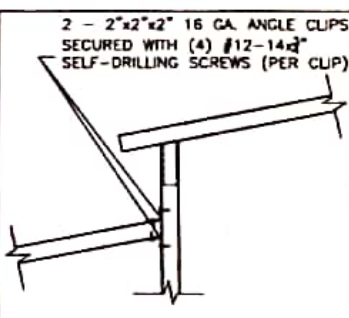
POST TO BASE RAIL CONNECTION



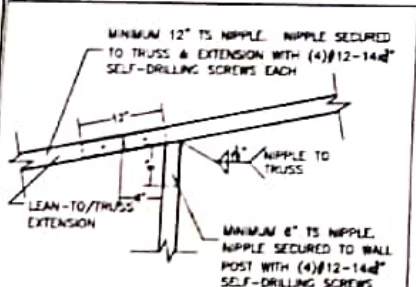
END POST TO BASE RAIL CONNECTION



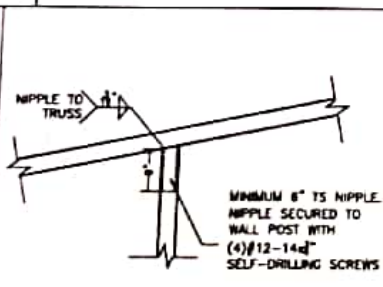
ROOF PANEL CONNECTION VERTICAL SHEATHING OPTION



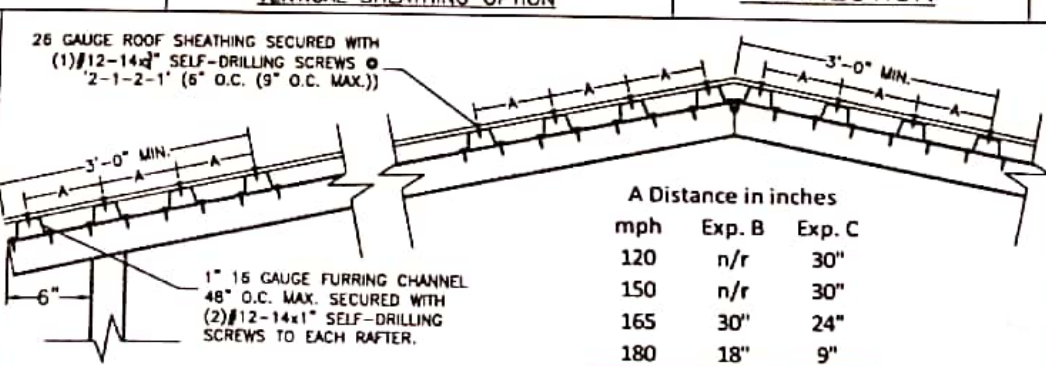
LEAN-TO TO TRUSS CONNECTION



LEAN-TO TO TRUSS CONNECTION



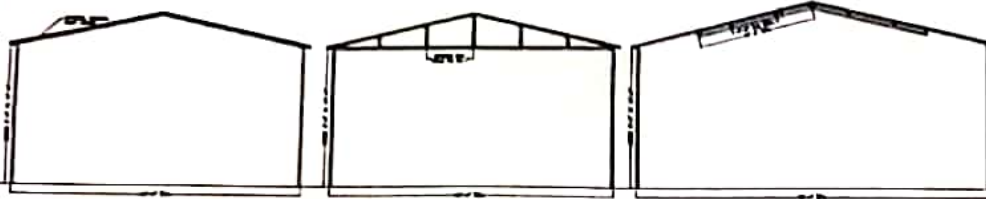
POST TO TRUSS CONNECTION



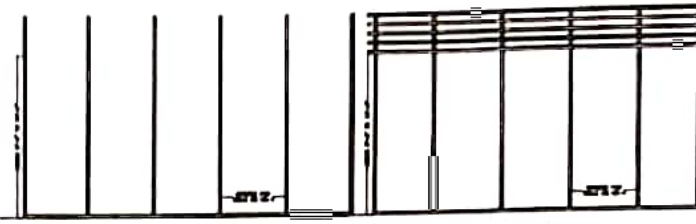
EAVE & RIDGE REINFORCED ROOF PANEL CONNECTION (RIDGE 3r AND EAVE 3e)

PRINTED COPIES OF THIS DOCUMENT ARE NOT CONSIDERED SIGNED AND SEALED AND THE SHA AUTHENTICATION CODE MUST BE VERIFIED ON ANY ELECTRONIC COPIES

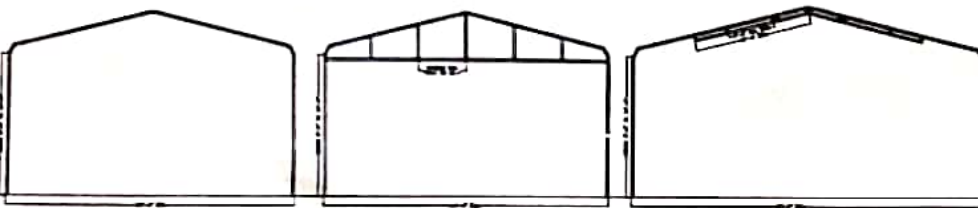
PRINTED COPIES OF THIS DOCUMENT ARE NOT CONSIDERED SIGNED AND SEALED AND THE SHA AUTHENTICATION CODE MUST BE VERIFIED ON ANY ELECTRONIC COPIES



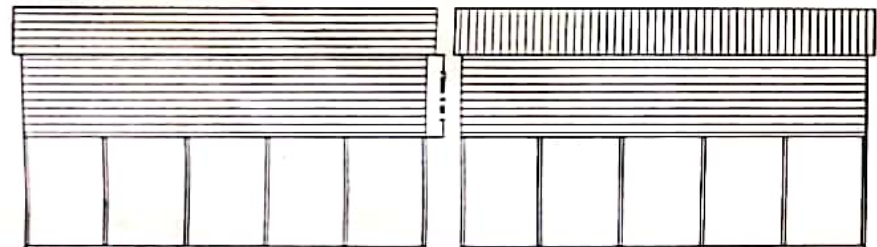
TYPICAL FRONT/PHASE FRAMING SECTION - BOX EAVE, UP TO 6' INCLUDING 2" SIP
TYPICAL FRONT/PHASE WALL FRAMING - BOX EAVE, UP TO 6' INCLUDING 2" SIP
TYPICAL FRONT/PHASE FRAMING SECTION - BOX EAVE, UP TO 11' TO 20' SIP



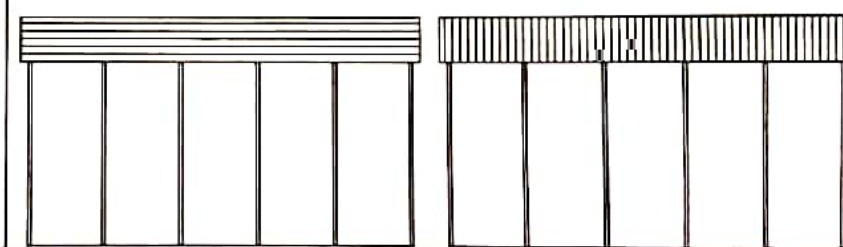
TYPICAL SIDE WALL FRAMING - BOX EAVE/HORIZONTAL ROOF
TYPICAL SIDE WALL FRAMING - BOX EAVE, VERTICAL ROOF



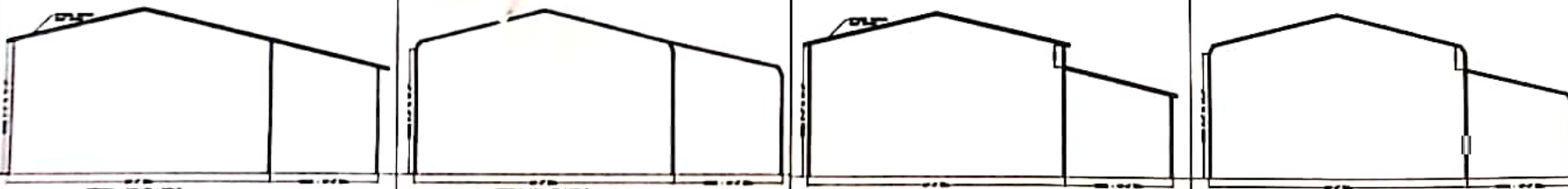
TYPICAL END ELEVATION - BOX EAVE, HORIZONTAL ROOF
TYPICAL END ELEVATION - BOX EAVE, HORIZONTAL ROOF WITH VERTICAL GABLE
TYPICAL END ELEVATION - BOX EAVE, VERTICAL ROOF



OPTIONAL SIDE WALL ELEVATION - BOX EAVE, HORIZONTAL WALL PANELS (OR LAP)/HORIZONTAL ROOF
OPTIONAL SIDE WALL ELEVATION - BOX EAVE, HORIZONTAL WALL PANELS (OR LAP)/VERTICAL ROOF



TYPICAL SIDE WALL ELEVATION - BOX FRAME, HORIZONTAL ROOF
TYPICAL SIDE WALL ELEVATION - BOX EAVE, VERTICAL ROOF



TYPICAL LAYOUT VIEW - HORIZONTAL ROOF
TYPICAL LAYOUT VIEW - HORIZONTAL ROOF WITH VERTICAL GABLE
TYPICAL LAYOUT VIEW - VERTICAL ROOF
TYPICAL LAYOUT VIEW - VERTICAL ROOF WITH VERTICAL GABLE



CODE INFORMATION	
CODE VERSION	PER 2019 IBC, ASCE 7-16
MANUFACTURER	CARPORTS ANYWHERE
BUILDING TYPE	UTILITY STRUCTURE
CONSTRUCTION TYPE	3-B
RISK CATEGORY	I
FIRE PROTECTION	NONE
FIRE SUPPRESSION SYSTEM	NONE
OCCUPANCY	UTILITY U
BASIC WIND SPEED	140 MPH
EXPOSURE	B, C
ENCLOSURE	SPD
WINDWARD PRESSURE COEFFICIENT	+0.4 - 0.4
IMPORTANCE FACTOR	1.0
ROOF DEAD LOAD	10 PSF
ROOF LIVE LOAD	20 PSF OR 20% ROOF LOAD
FLOOR DEAD LOAD	10 PSF
FLOOR LIVE LOAD	20 PSF
1" RATING OF WALLS, FLOOR, ROOF	N/A
WINDS PER BUILDING	1
HURRICANE PROTECTION USAGE	NO
HURRICANE SHELTER USAGE	NO
SQUARE FOOTAGE	

REVISIONS			
REV	DESCRIPTION	DATE	BY

Drawn By: MTS
 Date: 5/27/23
 Location: FLORIDA
 (State)
OPEN GENERIC ENGINEERING

GENERAL NOTES

- THIS BUILDING IS EXEMPT FROM THE FBC ENERGY CONSERVATION CODE PER SECTION C101.4.2.
- ALL STEEL FABRICS SHALL BE 50 KSI STEEL.
- PLUMBING, ELECTRICAL, BUSINESS/COMMERCIAL PROPERTY SET-BACKS, AND/OR OTHER LOCAL CODE REQUIREMENTS ARE THE RESPONSIBILITY OF THE OWNER.
- ROOF AND WALL SHEATHING SECURED WITH #12-14x1" SELF-DRILLING SCREWS WITH SEAL BARRIERS @ 8" O.C. MAX.
- FIELD FRAMING CONNECTIONS SECURED WITH #12-14x1/4" SELF-DRILLING SCREWS.
- ALL SHOP FRAMING CONNECTIONS ARE TO BE WELDED. NO WELDING CHIPS. ALL WELDING DONE BY SHOP BY A CERTIFIED WELDER.
- CONCRETE EXPANSION ANCHORS ARE TO BE MINIMUM 1/2"x1/2", 3,000 PSI TENSILE STRENGTH.
- 12 OR 14GA. FINISH IS 18"x18"x1/2" TUBE STEEL. RIPPLES ARE 2.25"x3.25" TUBE STEEL.

Matthew T. Roberts P.E.
 Florida License #24808

Sheet: CA-3 OF 3

TITLE: LAYOUT VIEWS