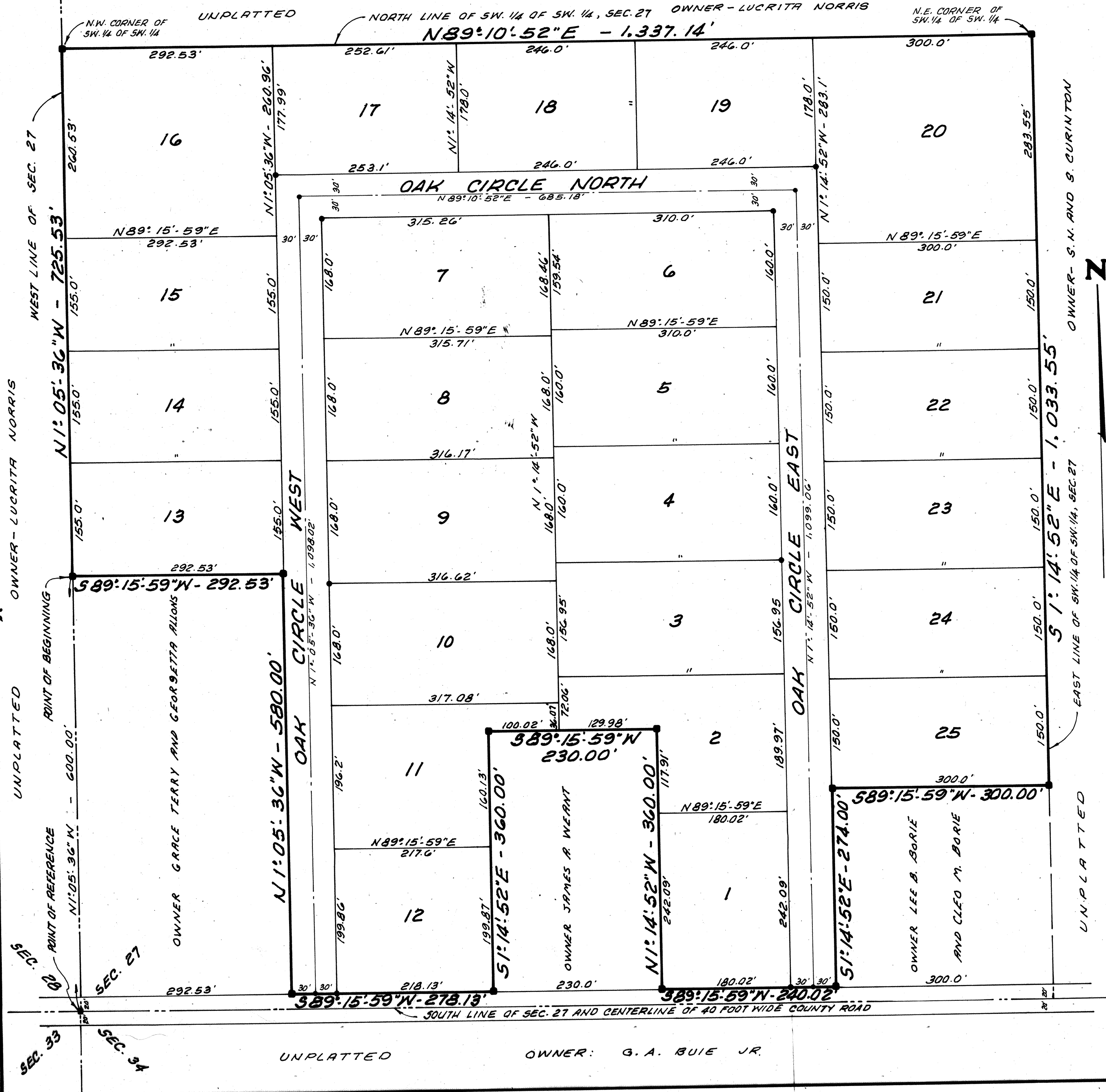


Shady Acres

COLUMBIA COUNTY, FLORIDA.

CAPTION:

PART OF THE SOUTHWEST 1/4 OF THE SOUTHWEST 1/4 OF SECTION 27, TOWNSHIP 4 SOUTH, RANGE 16 EAST, COLUMBIA COUNTY, FLORIDA, BEING MORE PARTICULARLY DESCRIBED AS FOLLOWS: FOR POINT OF REFERENCE COMMENCE AT A CONCRETE MONUMENT ON THE SOUTHWEST CORNER OF SAID SECTION 27, AND RUN NORTH 1° 05' 36" WEST, ALONG THE WEST LINE OF SAID SECTION 27, A DISTANCE OF 600.00 FEET TO A CONCRETE MONUMENT FOR THE POINT OF BEGINNING. FROM THE POINT OF BEGINNING CONTINUE THENCE NORTH 1° 05' 36" WEST, ALONG SAID WEST LINE, A DISTANCE OF 725.53 FEET TO A CONCRETE MONUMENT ON THE NORTHWEST CORNER OF SAID SOUTHWEST 1/4 OF SECTION 27; RUN THENCE NORTH 89° 10' 52" EAST, ALONG THE NORTH LINE OF SAID SOUTHWEST 1/4 OF SECTION 27, A DISTANCE OF 1,337.14 FEET TO A CONCRETE MONUMENT ON THE NORTHEAST CORNER OF SAID SOUTHWEST 1/4 OF SECTION 27; RUN THENCE SOUTH 89° 15' 59" WEST, A DISTANCE OF 300.00 FEET TO A CONCRETE MONUMENT; RUN THENCE SOUTH 1° 14' 52" EAST, ALONG THE EAST LINE OF SAID SOUTHWEST 1/4 OF SECTION 27, A DISTANCE OF 1,033.55 FEET TO A CONCRETE MONUMENT; RUN THENCE SOUTH 89° 15' 59" WEST, ALONG SAID NORTH RIGHT OF WAY LINE, A DISTANCE OF 240.02 FEET TO A CONCRETE MONUMENT; RUN THENCE NORTH 1° 14' 52" WEST, A DISTANCE OF 360.00 FEET TO A CONCRETE MONUMENT; RUN THENCE SOUTH 89° 15' 59" WEST, A DISTANCE OF 230.00 FEET TO A CONCRETE MONUMENT; RUN THENCE SOUTH 1° 14' 52" EAST, A DISTANCE OF 360.00 FEET TO A CONCRETE MONUMENT ON THE NORTH RIGHT OF WAY LINE OF SAID 40 FOOT WIDE COUNTY ROAD; RUN THENCE SOUTH 89° 15' 59" WEST, A DISTANCE OF 218.13 FEET TO A CONCRETE MONUMENT; RUN THENCE NORTH 1° 05' 36" WEST, A DISTANCE OF 580.00 FEET TO A CONCRETE MONUMENT; RUN THENCE SOUTH 89° 15' 59" WEST, A DISTANCE OF 292.53 FEET TO THE POINT OF BEGINNING. THE LANDS THUS DESCRIBED CONTAIN 32.48 ACRES, MORE OR LESS.



DEDICATION:

KNOWN ALL MEN BY THESE PRESENTS: THAT LEONARD A. DUREN AND GLORIA C. DUREN, HIS WIFE, AS OWNERS AND THE FIRST COMMERCIAL BANK OF LIVE OAK, A BANKING CORPORATION, AS MORTGAGEE, HAVE CAUSED THE LANDS HEREIN DESCRIBED TO BE SURVEYED, LAID OUT, SUBDIVIDED AND PLATTED, TO BE KNOWN AS SHADY ACRES, AND THAT THE ROADS AS SHOWN ARE HEREBY DEDICATED TO THE PUBLIC FOR THE USES AND PURPOSES THEREON STATED. IN WITNESS WHEREOF, LEONARD A. DUREN, GLORIA C. DUREN AND THE FIRST COMMERCIAL BANK OF LIVE OAK HAVE EXECUTED AND CAUSED THESE PRESENTS TO BE EXECUTED IN THEIR RESPECTIVE NAMES WITH THEIR SEALS AFFIXED HERETO.

Leonard A. Duren (SEAL) LEONARD A. DUREN
Gloria C. Duren (SEAL) GLORIA C. DUREN
James R. Weant (SEAL) JAMES R. WEANT
Lee B. Borie (SEAL) LEE B. BORIE
Cleo M. Borie (SEAL) CLEO M. BORIE
 WITNESSES: *Robert B. Fried* (SEAL) ROBERT B. FRIED, PRESIDENT; *Richard P. Clason* (SEAL) RICHARD P. CLASON, VICE-PRESIDENT.

ACKNOWLEDGEMENT:

STATE OF FLORIDA, COUNTY OF COLUMBIA: THE FOREGOING INSTRUMENT WAS ACKNOWLEDGED BEFORE ME BY LEONARD A. DUREN, GLORIA C. DUREN, HIS WIFE AND BY A. P. NOTT AND RAYMOND A. SHMID AS PRESIDENT AND VICE PRESIDENT OF THE FIRST COMMERCIAL BANK OF LIVE OAK, A FLORIDA BANKING CORPORATION.

SIGNED THIS 26th DAY OF JUNE, 1975 A.D. *Robert B. Fried* (SEAL) ROBERT B. FRIED, NOTARY PUBLIC, STATE OF FLORIDA.

SURVEYOR'S CERTIFICATION:

I HEREBY CERTIFY THAT I AM A DULY AUTHORIZED LAND SURVEYOR AND THAT A SURVEY OF THE LANDS HEREON DESCRIBED HAS BEEN MADE UNDER MY RESPONSIBLE DIRECTION AND SUPERVISION AND SUBDIVIDED AS SHOWN ON THIS PLAT, AND THAT PERMANENT REFERENCE MONUMENTS AND PERMANENT CONTROL POINTS HAVE BEEN PLACED ACCORDING TO CHAPTER 177, FLORIDA STATUTES, PLATS BEING A TRUE AND CORRECT REPRESENTATION OF SAID SURVEY.

SIGNED THIS 17th DAY OF JUNE, 1975 A.D. *Richard P. Clason* (SEAL) RICHARD P. CLASON, REGISTERED SURVEYOR No. 753, FLORIDA.

APPROVED BY THE BOARD OF COUNTY COMMISSIONERS:

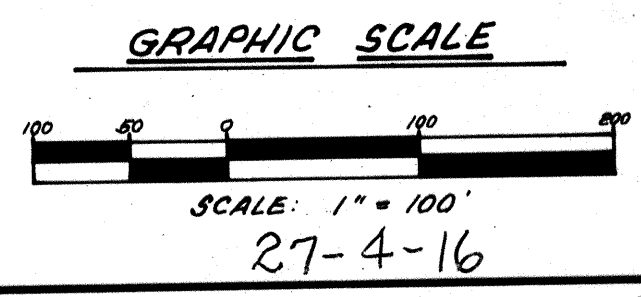
COLUMBIA COUNTY, FLORIDA: SIGNED THIS 11th DAY OF November, 1975 A.D. *John M. ...* (SEAL) CHAIRMAN; *W. E. Brews* (SEAL) W. E. BREWS, CLERK.

CERTIFICATE OF THE CLERK:

FILE NUMBER: I HEREBY CERTIFY THAT I HAVE EXAMINED THE FOREGOING PLAT AND FIND THAT IT COMPLIES IN FORM WITH CHAPTER 177 FLORIDA STATUTES AND WAS FILED FOR RECORD THIS 11th DAY OF November, 1975, IN PLAT BOOK PAGE OF THE PUBLIC RECORDS OF COLUMBIA COUNTY, FLORIDA. *W. E. Brews* (SEAL) W. E. BREWS, CLERK OF THE CIRCUIT COURT IN AND FOR COLUMBIA COUNTY, FLORIDA.

NOTES:

- 1- PERMANENT REFERENCE MONUMENTS SHOWN THUS: ■
- 2- PERMANENT CONTROL POINTS SHOWN THUS: ●
- 3- ALL LOTS CONTAIN A MINIMUM OF 1 ACRE.
- 4- BEARINGS SHOWN ARE PROJECTED FROM D.O.T. RIGHT OF WAY MAPS FOR STATE ROAD No. 242.



1975 NOV 23 11:00 AM
 CLERK OF CIRCUIT COURT
 COLUMBIA COUNTY, FLORIDA

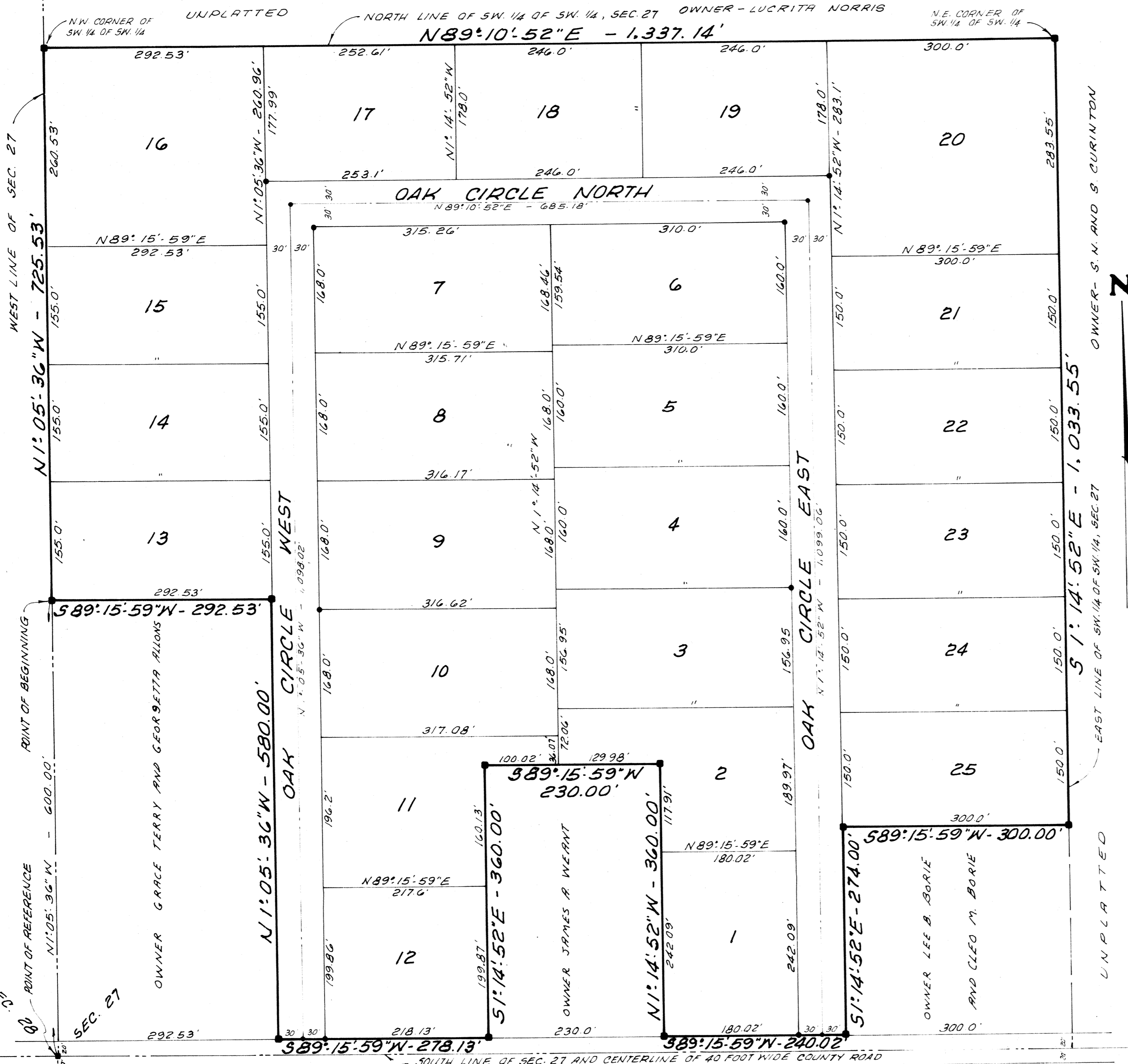
72

Shady Acres

COLUMBIA COUNTY, FLORIDA.

CAPTION:

PART OF THE SOUTHWEST 1/4 OF THE SOUTHWEST 1/4 OF SECTION 27, TOWNSHIP 4 SOUTH, RANGE 16 EAST, COLUMBIA COUNTY, FLORIDA, BEING MORE PARTICULARLY DESCRIBED AS FOLLOWS: FOR POINT OF REFERENCE COMMENCE AT A CONCRETE MONUMENT ON THE SOUTHWEST CORNER OF SAID SECTION 27, AND RUN NORTH 1° 05' 36" WEST, ALONG THE WEST LINE OF SAID SECTION 27, A DISTANCE OF 600.00 FEET TO A CONCRETE MONUMENT FOR THE POINT OF BEGINNING. FROM THE POINT OF BEGINNING THIS DESCRIBED CONTINUE THENCE NORTH 1° 05' 36" WEST, ALONG SAID WEST LINE, A DISTANCE OF 725.53 FEET TO A CONCRETE MONUMENT ON THE NORTHWEST CORNER OF SAID SOUTHWEST 1/4 OF SOUTHWEST 1/4 OF SECTION 27, RUN THENCE SOUTH 1° 14' 52" EAST, ALONG THE NORTH LINE OF SAID SOUTHWEST 1/4 OF SOUTHWEST 1/4 OF SECTION 27, A DISTANCE OF 1,337.14 FEET TO A CONCRETE MONUMENT ON THE NORTHEAST CORNER OF SAID SOUTHWEST 1/4 OF SOUTHWEST 1/4 OF SECTION 27, RUN THENCE SOUTH 89° 15' 59" WEST, A DISTANCE OF 300.00 FEET TO A CONCRETE MONUMENT, RUN THENCE SOUTH 1° 14' 52" EAST, A DISTANCE OF 274.00 FEET TO A CONCRETE MONUMENT ON THE NORTH RIGHT OF WAY LINE OF A 40 FOOT WIDE COUNTY ROAD; RUN THENCE SOUTH 89° 15' 59" WEST, ALONG SAID NORTH RIGHT OF WAY LINE, A DISTANCE OF 240.02 FEET TO A CONCRETE MONUMENT; RUN THENCE NORTH 1° 14' 52" WEST, A DISTANCE OF 360.00 FEET TO A CONCRETE MONUMENT; RUN THENCE SOUTH 89° 15' 59" WEST, A DISTANCE OF 230.00 FEET TO A CONCRETE MONUMENT; RUN THENCE SOUTH 1° 14' 52" EAST, A DISTANCE OF 360.00 FEET TO A CONCRETE MONUMENT ON THE NORTH RIGHT OF WAY LINE OF SAID 40 FOOT WIDE COUNTY ROAD; RUN THENCE SOUTH 89° 15' 59" WEST, ALONG SAID NORTH RIGHT OF WAY LINE, A DISTANCE OF 218.13 FEET TO A CONCRETE MONUMENT; RUN THENCE NORTH 1° 05' 36" WEST, A DISTANCE OF 580.00 FEET TO A CONCRETE MONUMENT; RUN THENCE SOUTH 89° 15' 59" WEST, A DISTANCE OF 292.53 FEET TO THE POINT OF BEGINNING. THE LANDS THUS DESCRIBED CONTAIN 32.48 ACRES, MORE OR LESS.



DEDICATION:

KNOWN ALL MEN BY THESE PRESENTS: THAT LEONARD A. DUREN AND GLORIA C. DUREN, HIS WIFE, AS OWNERS AND THE FIRST COMMERCIAL BANK OF LIVE OAK, A BANKING CORPORATION AS MORTGAGEE, HAVE CAUSED THE LANDS HEREIN DESCRIBED TO BE SURVEYED, LAID OUT, SUBDIVIDED AND PLATTED, TO BE KNOWN AS SHADY ACRES, AND THAT THE ROADS AS SHOWN ARE HEREBY DEDICATED TO THE PUBLIC FOR THE USES AND PURPOSES THEREON STATED. IN WITNESS WHEREOF, LEONARD A. DUREN, GLORIA C. DUREN AND THE FIRST COMMERCIAL BANK OF LIVE OAK HAVE EXECUTED AND CAUSED THESE PRESENTS TO BE EXECUTED IN THEIR RESPECTIVE NAMES WITH THEIR SEALS AFFIXED HERETO.

LEONARD A. DUREN (SEAL) WITNESS
 GLORIA C. DUREN (SEAL) WITNESS
 FIRST COMMERCIAL BANK OF LIVE OAK PRESIDENT
 AS TO ALL PARTIES VICE PRESIDENT

ACKNOWLEDGEMENT:

STATE OF FLORIDA, COUNTY OF COLUMBIA:
 THE FOREGOING INSTRUMENT WAS ACKNOWLEDGED BEFORE ME BY LEONARD A. DUREN, GLORIA C. DUREN, HIS WIFE AND BY A. P. NOTT AND Raymond A. Schmid AS PRESIDENT AND VICE PRESIDENT OF THE FIRST COMMERCIAL BANK OF LIVE OAK, A FLORIDA BANKING CORPORATION.

SIGNED THIS 26th DAY OF JUNE, 1975 A.D. Robert B. Fria NOTARY PUBLIC STATE OF FLORIDA MY COMMISSION EXPIRES

SURVEYOR'S CERTIFICATION:

I HEREBY CERTIFY THAT I AM A DULY AUTHORIZED LAND SURVEYOR AND THAT A SURVEY OF THE LANDS HEREON DESCRIBED HAS BEEN MADE UNDER MY RESPONSIBLE DIRECTION AND SUPERVISION AND SUBDIVIDED AS SHOWN ON THIS PLAT, AND THAT PERMANENT REFERENCE MONUMENTS AND PERMANENT CONTROL POINTS HAVE BEEN PLACED ACCORDING TO CHAPTER 177, FLORIDA STATUTES, PLATS BEING A TRUE AND CORRECT REPRESENTATION OF SAID SURVEY.

SIGNED THIS 17th DAY OF JUNE 1975 A.D. Richard P. Clarron REGISTERED SURVEYOR No. 753, FLORIDA CLARSON AND BATTLE LAND SURVEYORS

APPROVED BY THE BOARD OF COUNTY COMMISSIONERS:

COLUMBIA COUNTY, FLORIDA:
 SIGNED THIS 17th DAY OF JUNE 1975 A.D. Chairman
 ATTEST: Clerk

CERTIFICATE OF THE CLERK:

FILE NUMBER
 I HEREBY CERTIFY THAT I HAVE EXAMINED THE FOREGOING PLAT AND FIND THAT IT COMPLIES IN FORM WITH CHAPTER 177 FLORIDA STATUTES AND WAS FILED FOR RECORD THIS 17th DAY OF JUNE 1975, IN PLAT BOOK PAGE OF THE PUBLIC RECORDS OF COLUMBIA COUNTY, FLORIDA.

NOTES:

- 1 - PERMANENT REFERENCE MONUMENTS SHOWN THUS
- 2 - PERMANENT CONTROL POINTS SHOWN THUS
- 3 - ALL LOTS CONTAIN A MINIMUM OF 1 ACRE
- 4 - BEARINGS SHOWN ARE PROJECTED FROM U.O.I. RIGHT OF WAY MAPS FOR STATE ROAD No. 242

