

OPTION LIST □ = OPTION NOT INCLUDED IN SET ■ = OPTION INCLUDED IN SET

INTERIOR OPTIONS		DESCRIPTION		EXTERIOR OPTIONS	
DESCRIPTION	DESCRIPTION	DESCRIPTION	DESCRIPTION	DESCRIPTION	DESCRIPTION
■ BACKLIT MENU BOARD	□ DOUBLE SIDED GRILL	■ MUSIC W/ CEILING MOUNTED SPEAKERS	■ RAISED CAMEL COLORED CENTER CEILING IN DINING ROOM	■ PLUV VESTIBULE	■ PLUV AWNING AT PAY WINDOW
■ BACKLIT QUELING BOARD	□ 30 LB FRYER	■ BANQUETTE SEATING		■ PATIO	■ FRONT AND PLUV FINISH (EPFS)
■ BACKLIT BRR	■ NEXT GEN POS W/ ALUMA	■ BELT SERVE DRINK ONE FREESTYLE IN DR		■ LANDSCAPING	■ FULL HEIGHT VISION GLASS
■ BELT SERVE DRINK - TWO FREESTYLE	■ WOOD LOOK PORCELAN PLANK TILE	■ RAISED CEILING IN FRONT OF SLABE		■ RED SLAB IN ACM	■ FREEZER/COOLER (13-4X22)
■ CONDIMENT STAND 32"	■ 1" TRIPPL. ADE, 1 TV/LOUNGE SEATING	■ INK LITE KITCHEN DESIGN		■ ORDER STATION CANOPY	■ ONE PLUV
■ COUNTER CLOCKWISE CURBIE	■ AIRTRUCK	■ WOODCHIMBLDS		■ PLUV AWNING	■ RAISED PLUV BLADE
■ SEPARATION OF ORDER/DRY FROM PICKUP	■ WPI SERVICE W/ DEDICATED WPI BAR	■ RED SLAB IN ACM IN LIEU OF HP LAM		■ EXPANDED 6-0" PLUV	■ SLAB BACK DESIGN

CONSTRUCTION / PRODUCT WARRANTIES
 THESE CONSTRUCTION DOCUMENTS NOTE SPECIFIC PRODUCTS, DETAILS AND SPECIFICATIONS THAT WILL PROVIDE CONSTRUCTION / PRODUCT WARRANTIES FOR THE FOLLOWING AREAS OF CONSTRUCTION:
 EPFS (STO)
 ROOFING (DURALAST)
 INTERIOR AND EXTERIOR TILE (LATICRETE)
 ALTERING THESE DOCUMENTS MAY ALTER THE WARRANTY GUIDELINES. STO, DURALAST AND LATICRETE WILL BE REQUIRED TO APPROVE THE DRAWINGS TO MAINTAIN THE WARRANTIES. THE CONTRACTOR IS ALSO RESPONSIBLE FOR CONTACTING STO, DURALAST AND LATICRETE FOR ON-SITE INSTALLATION INSPECTIONS OF EACH OF THE AREAS OF WORK.
 FRANCHISEES HAVE THE OPTION OF NOT FOLLOWING WENDY'S CORPORATE WARRANTY RECOMMENDATIONS OUTLINED IN THESE DOCUMENTS.

SITE NUMBER: 11645
 BASE MODL: E2000
 ASSET TYPE: FRANCHISEE
 CLASSIFICATION: NEW
 OWNER: WEN ONE OF FLORIDA, INC.
 BASE VERSION: 2/14 J.A. 03 RD
 UPGRADE CLASSIFICATION:
 FROM NEW BASE
 PROJECT YEAR: 2014
 FURNITURE PACKAGE: 2014
 DESIGN BULLETIN: THRU DR 01

GENERAL NOTES

- DISCREPANCIES BETWEEN THESE DOCUMENTS AND THE ACTUAL FIELD CONDITIONS SHALL BE BROUGHT TO THE ATTENTION OF THE ARCHITECT BEFORE PROCEEDING WITH WORK.
- REVIEW DOCUMENTS AND VERIFY DIMENSIONS AND FIELD CONDITIONS AND CONFIRM THAT WORK IS CONSTRUCTIBLE AS SHOWN. CONFLICTS OR OMISSIONS, ETC. SHALL BE IMMEDIATELY REPORTED TO THE ARCHITECT FOR CLARIFICATION PRIOR TO THE PERFORMANCE OF WORK IN QUESTION.
- DO NOT SCALE DRAWINGS. WRITTEN DIMENSIONS GOVERN PARTITION LOCATIONS. IN CASE OF CONFLICT, NOTIFY THE ARCHITECT OF RECORD. FLOOR PLAN BY ARCHITECT OF RECORD SUPERSEDES OTHER PLANS. DIMENSIONS MARKED "CLEAN" SHALL BE MAINTAINED AND SHALL ALLOW FOR THICKNESS OF FINISHES INCLUDING CARPET, PAD, CERAMIC TILE, V.C.T., ETC.
- INTERIOR DIMENSIONS ARE TO THE FACE OF STUD, UNLESS NOTED OTHERWISE.
- COLUMN CENTER LINE (OR GRID LINES) ARE SHOWN FOR DIMENSIONING. VERIFY EXACT LOCATIONS IN FIELD.
- MARK LOCATIONS OF PARTITIONS AND DOORS FOR REVIEW BY THE OWNER'S REPRESENTATIVE PRIOR TO INSTALLATION. REVIEW WILL BE FOR DESIGN INTENT. COORDINATE AND VERIFY CONDITIONS TO ENSURE PROPER FIT WITH THE OWNER'S REPRESENTATIVE TO REVIEW SPECIFIC REQUIREMENTS. CONTRACTOR IS RESPONSIBLE TO FOLLOW THE WENDY'S COMPANY RULES AND REGULATIONS.
- WHEN CONTRACTOR ACCEPTS DELIVERY OF ALL ITEMS NOTED ON PLANS WHETHER IN CONTRACT OR NOT IN CONTRACT, HE SHALL BE RESPONSIBLE FOR LOSS AND/OR DAMAGE TO THESE ITEMS.
- THE CONTRACTOR SHALL MAINTAIN, FOR THE ENTIRE DURATION OF THE WORK, ALL EXITS, EXISTING LIGHTING, FIRE PROTECTION DEVICES AND ALARMS IN COMPLIANCE WITH ALL APPLICABLE CODES AND ORDINANCES.
- SAW CUTTING AND CORING LOCATIONS SHALL BE REVIEWED IN FIELD AND COORDINATED WITH THE OWNER'S REPRESENTATIVE PRIOR TO CUTTING/CORING.
- DURING ALL PHASES OF WORK, DO NOT DISTURB THE DELIVERIES AND FUNCTIONS OF ADJACENT AND NEIGHBORING TENANTS.
- "TYP." MEANS THAT THE CONDITION IS REPRESENTATIVE FOR SIMILAR CONDITIONS THROUGHOUT, UNLESS OTHERWISE NOTED.
- PROVIDE PORTABLE FIRE EXTINGUISHER(S) IN ACCORDANCE WITH NFPA 10, WITH U.L. LABEL AND A RATING OF NOT LESS THAN 2-A WITH 75 FT. TRAVEL DISTANCE TO ALL POSITIONS OF RESTAURANT OR AS DIRECTED BY THE FIRE DEPARTMENT FIELD INSPECTOR. PROVIDE CLASS K FIRE EXTINGUISHER WITHIN 30 FT. OF COMMERCIAL FOOD HEAT-PROCESSING EQUIPMENT.
- EXTERIOR BUILDING SIGNS SHALL BE SUBMITTED UNDER SEPARATE PERMIT APPLICATION FOR REVIEW AND APPROVAL, AS REQUIRED BY LOCAL AUTHORITIES. EXTERIOR SIGNS ARE NOT WITHIN THE SCOPE OF BUILDING DEPARTMENT APPROVAL.
- PRIOR TO COMMENCEMENT OF WORK, OBTAIN A COPY OF THE BUILDING CONSTRUCTION PERMIT FROM THE JURISDICTION HAVING AUTHORITY (JHA) AND A COPY OF THE SET OF CONSTRUCTION DOCUMENTS SIGNED AND SEALED BY A LICENSED DESIGN PROFESSIONAL FOR ALL DISCIPLINES AS REQUIRED AND USED TO OBTAIN THE BUILDING PERMIT.
- IF REQUIRED BY LOCAL JURISDICTION - SPRINKLER, LIFE SAFETY, AND FIRE ALARM SYSTEMS ARE TO BE DESIGNED AND SUBMITTED FOR REVIEW AND APPROVAL BY LOCALLY LICENSED DESIGN PROFESSIONAL. THE DESIGN OF SYSTEM(S) MUST COMPLY TO LOCAL, STATE, AND NATIONAL CODES.
- BIDDERS REFER TO WENDY'S APPROVED SUPPLIER LIST ON SHEET A6.2 TO OBTAIN NATIONAL ACCOUNT PHONE NUMBERS AND CONTACTS.

ABBREVIATIONS

SYMBOL	DESCRIPTION	SYMBOL	DESCRIPTION
CL	CENTERLINE	LD	INSIDE DIAMETER
ALUM	ALUMINUM COMPOSITE PANEL	INSUL	INSULATION
ACT	ADJUSTABLE	JT	JOINT
ADJ	ADJUSTABLE	KEE	KITCHEN EQUIPMENT SUPPLIER
A.F.F.	AROSE FINISH FLOOR	LAM	LAMINATE
ALUM	ALUMINUM	LB(S)	POUNDS(S)
A.O.R	ARCHITECT OF RECORD	MAX	MAXIMUM
ARCH	ARCHITECTURAL	MECH	MECHANICAL
BD	BOARD	MFR	MANUFACTURER
BLDG	BUILDING	MGR	MANAGER
BLKS	BLOCKING	MIN	MINIMUM
BM	BEAM	MISC	MISCELLANEOUS
BOT	BOTTOM	MTR	METAL
CAB	CABINET	N	NORTH
CER	CERAMIC	N.I.C	NOT IN CONTRACT
C.L.G	CEILING	N.T.S	NOT TO SCALE
CLG	CALLING	NO	NUMBER
CLR	CLEAR	NOM	NOMINAL
COL	COLUMN	O.D.	OUTSIDE DIAMETER
CMC	CONCRETE	OPNG	OPENING
CONT	CONTINUOUS	OPP	OPPOSITE
DBL	DOUBLE	P.LAM	PLASTIC LAMINATE
DET	DETAIL	PL	PLATE
DIAM	DIAMETER	PLAS	PLASTER
DIM	DIMENSION	PLYWD	PLYWOOD
DN/DNO	DO NOT DEMOLISH	PR	PAIR
DOOR	DOOR	PT	POINT
DS	DOWNSPOUT	PT	PRESSURE-TREATED
DWG	DRAWING	RAD	RADIUS
(E)	EXISTING	REF	REFERENCE
EACH	EACH	REQD	REQUIRED
ELEV	ELEVATION	REQD	REQUIRED
ELEC	ELECTRICAL	RM	ROOM
EMER	EMERGENCY	S	SOUTH
EQ	EQUAL	S.C.	SOLID CORE
FMS	FACE OF MASONRY	S.F.	SQUARE FOOT
F	FIRE EXTINGUISHER	S.S.	STAINLESS STEEL
F.O.	FACE OF	SCHED	SCHEDULE
F.O.F	FACE OF FINISH	SHT	SHEET
F.O.S	FACE OF STUDS	SIM	SIMILAR
FF	FINISH TO FINISH	SPEC.	SPECIFICATION
FR	FIRE RETARDANT	SQJAE	SQUARE STANDARD
FIN	FINISH	STL	STEEL
FLOOR	FLOOR	STOR	STORAGE
FLOR	FLOORING	SUSP	SUSPENDED
FT	FOOT, FEET	T.C.	TIME CLOCK
F.V.	FIELD VERIFY	TOP	TOP OF
GRAB BAR	GRAB BAR	TEL	TELEPHONE
G.C.	GENERAL CONTRACTOR	THK	THICK
GA	Gauge	TYP	TYPICAL
GL	GLASS	U.N.O.	UNLESS NOTED OTHERWISE
GYP	GYPSONUM	VERT	VERTICAL
H	HIGH	V.I.F.	VERIFY IN FIELD
H.C.	HOLLOW CORE	W	WEST
H.M.	HOLLOW METAL	W	WITH
HC	HANDICAPPED	WC	WATER CLOSET
HND	HANDWOOD	W/O	WITHOUT
HORIZ	HORIZONTAL	WR	WATER RESISTANT
HGT	HEIGHT	WD	WOOD
H.T.	HANGER TIGHT UNIT		
HVAC	HEATING, VENTILATION, AIR CONDITIONING		

DESCRIPTIVE SUMMARY OF WORK

THE WORK INCLUDES ALL LABOR, MATERIALS, AND EQUIPMENT TO BUILD, FINISH, AND PROVIDE ALL SITE WORK AND UTILITIES, FOR A PROPOSED NEW RESTAURANT FOR THE "OWNER". THE WORK SHALL INCLUDE ALL ITEMS REQUIRED AS SHOWN ON THE DRAWINGS. IN ADDITION ALL WORK ASSOCIATED WITH THE SITE DEVELOPMENT INCLUDING PARKING, WALKWAYS, PATIO SLAB, AND SITE UTILITIES TO THE BUILDING ARE TO BE PROVIDED IN THIS CONTRACT. ALL MECHANICAL EQUIPMENT AND SYSTEMS, ALL ELECTRICAL SYSTEMS, AND EQUIPMENT ARE TO BE INCLUDED FOR A COMPLETE OPERATING SYSTEM WITH COORDINATION AND INSTALLATION INCLUDED.

CODE DATA AND SQUARE FOOTAGE

STORE TYPE: WENDY'S E2000 STANDARD
 LOCATION: 158 SW COREY PLACE, LAKE CITY, FL 32024
 BUILDING LEVEL: 1 OF 1
 APPLICABLE CODES:
 BUILDING: 2010 FLORIDA BUILDING CODE
 PLUMBING: 2010 FLORIDA BUILDING CODE
 ELECTRICAL: 2008 NATIONAL ELECTRIC CODE
 MECHANICAL: 2010 FLORIDA BUILDING CODE
 FIRE: 2010 FLORIDA FIRE PREVENTION CODE
 FUEL GAS: 2010 FLORIDA BUILDING CODE
 ENERGY CONSERVATION: 2010 FLORIDA BUILDING CODE
 ACCESSIBILITY: 2010 FLORIDA BUILDING CODE

OCCUPANCY GROUP: A-2 RESTAURANT

GROSS BUILDING AREA: 3,067 G.S.F.
 ICE BOX (13'-6" X 22'): 297 SF
 TOTAL FOOTPRINT AREA: 3,364 G.S.F.

OCCUPANCY CALCULATIONS:

FLOOR	USE	SQUARE FOOTAGE	OCCUPANT LOAD FACTOR	NUMBER OF OCCUPANTS	TOTAL EXITS REQUIRED 2	TOTAL EXITS PROVIDED 3
1 OF 1	DINING	1240 SF	1/15	83		
1 OF 1	KITCHEN	1117 SF	1/200	6		
1 OF 1	SERVICE AREA	145 SF	1/200	1		
1 OF 1	RESTROOM	214 SF				
TOTAL NUMBER OF OCCUPANTS:				90		

CONSTRUCTION TYPE: COMBUSTIBLE
 FIRE RESISTIVE REQUIREMENTS:
 EXTERIOR BEARING WALL: (0 HOUR)
 ROOF CONSTRUCTION: (0 HOUR)
 CEILING: (0 HOUR)
 FIRE SPRINKLERS: NOT REQUIRED
 EXIT ACCESS TRAVEL DIST: 200'
 RESTROOM REQUIREMENTS:
 WATER CLOSETS: 1 REQUIRED FOR MALE, 1 REQUIRED FOR FEMALE - 2 PROVIDED
 LAVATORIES: 1 REQUIRED FOR MALE, 1 REQUIRED FOR FEMALE - 2 PROVIDED
 DRINKING FOUNTAINS: 0 REQUIRED

EGRESS CALCULATIONS: 90 OCCUPANTS x 0.2' = 18' EGRESS WIDTH REQ'D
 108' EGRESS WIDTH PROVIDED

SHEET INDEX

SHEET	DESCRIPTION	REVISION				
		1	2	3	4	5
G1.1	COVER SHEET					
AS1.1	ARCHITECTURAL SITE PLAN					
AS2.1	SITE DETAILS					
AS3.1	ORDER STATION CANOPY					
A1.1	FLOOR PLAN					
A1.2	REFLECTED CEILING PLAN					
A1.3	ROOF PLAN					
A2.1	EXTERIOR ELEVATIONS					
A2.2	EXTERIOR ELEVATIONS					
A3.1	WALL SECTIONS					
A3.2	WALL SECTIONS					
A3.3	WALL SECTIONS					
A3.4	WALL SECTIONS					
A3.5	NOT USED					
A4.1	SECTION DETAILS					
A4.2	NOT USED					
A4.3	PLAN DETAILS					
A4.4	PARTITION TYPES					
A4.5	ROOF DETAILS					
A5.1	FINISHES PLAN					
A5.2	INTERIOR FINISH DETAILS					
A6.1	FINISHES SCHEDULE					
A6.2	SUPPLIER LIST					
A6.3	DOOR, WINDOW, HARDWARE, PAINT AND TILE SCHEDULES					
A6.4	DOOR AND WINDOW DETAILS					
A7.1	INTERIOR ELEVATIONS DINING ROOM					
A7.2	INTERIOR ELEVATIONS DINING ROOM					
A7.3	INTERIOR ELEVATIONS KITCHEN					
A7.4	INTERIOR ELEVATIONS KITCHEN					
A7.5	INTERIOR ELEVATIONS KITCHEN					
A7.6	RESTROOM ELEVATIONS AND ENLARGED PLAN					
EQ1.1	EQUIPMENT PLAN					
EQ1.2	EQUIPMENT SCHEDULE					
S0.1	STRUCTURAL NOTES AND SECTIONS					
S1.1	FOUNDATION PLAN AND SECTIONS					
S1.2	FOUNDATION SECTIONS					
S2.1	ROOF FRAMING PLAN					
S2.2	FRAMING SECTIONS					
S2.3	FRAMING SECTIONS					
S2.4	FRAMING SECTIONS					
S2.5	DETAILS					
M1.1	HVAC PLAN					
M2.1	HVAC DETAILS					
P1.1	PLUMBING PLAN - SANITARY					
P2.1	PLUMBING ROUGH-IN PLAN					
ED.1	ELECTRICAL SITE PLAN					
E1.1	LIGHTING PLAN					
E2.1	POWER PLAN					
E3.1	ELECTRICAL DISTRIBUTION					
E4.1	SECURITY PLAN					
E4.2	POS PLAN AND NOTES					
SP1	SPECIFICATIONS					
SP2	SPECIFICATIONS					
SP3	SPECIFICATIONS					
SP4	SPECIFICATIONS					

PROJECT TEAM | DIRECTORY

CLIENT	WEN-ONE OF FLORIDA, INC.
	134 SE COLBURN AVE. LAKE CITY, FL 32025 CONTACT: BRIAN TUCKER TEL: 386-752-7344 FAX: 386-752-0482
ARCHITECT	RAIL PARTNERS P.O. BOX 359055 GAINESVILLE, FLORIDA 32635-0555 CONTACT: DANIEL KAIL TEL: 352-871-4935 FAX: 866-468-3048
STORE DESIGN	WENDY'S, INC. - CONTACT: - TEL: - FAX: -
MEP ENGINEER	COBURN & ASSOCIATES, INC. P.O. BOX 577 HIGH SPRINGS, FLORIDA 32655 CONTACT: RICHARD COBURN TEL: 386-454-3748 FAX: 386-454-2052
STRUCTURAL ENGINEER	MCVEIGH & MANGUM ENG., INC. 9133 RD SKINNER Pkwy JACKSONVILLE, FLORIDA 32256 CONTACT: WAYNE MANGUM TEL: 904-483-5300 FAX: 904-636-8770
GENERAL CONTRACTOR	O'NEAL COMPANIES, INC. 212 SE HICKORY DRIVE LAKE CITY, FLORIDA 32056 CONTACT: JOHN O'NEAL TEL: 386-752-7578 FAX: 386-755-0240

PROJECT SITE ADDRESS

158 SW COREY PLACE
LAKE CITY, FL 32024



PROJECT TYPE: E2000 NEW

APPROVED (Sealed in accordance with Florida Statute 481.009) by Daniel Kail, P.E., License No. 124079

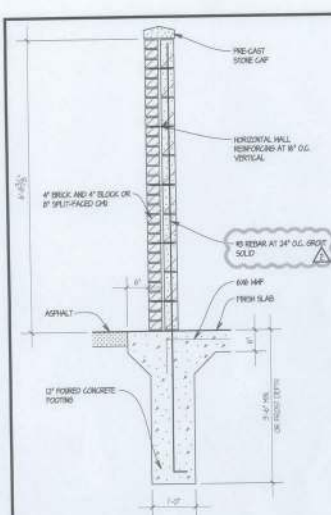
Wendy's
14079

REV	DATE	DESCRIPTION
1	OCTOBER 22, 2014	
2		
3		
4		
5		

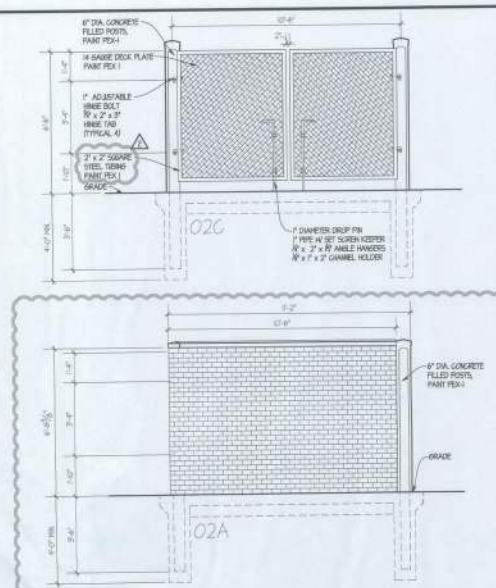


COVER SHEET

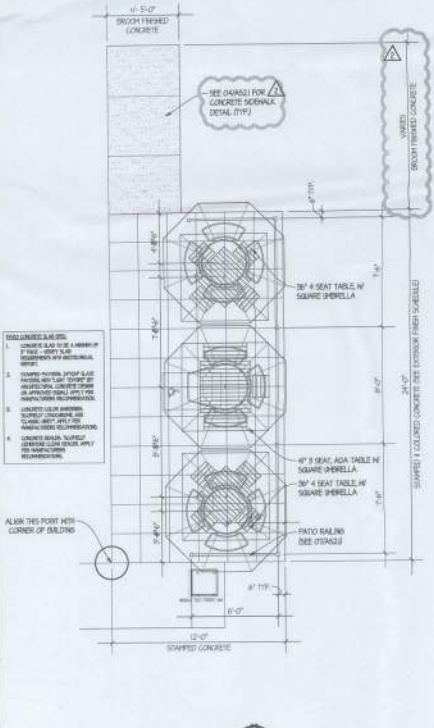
G1.1



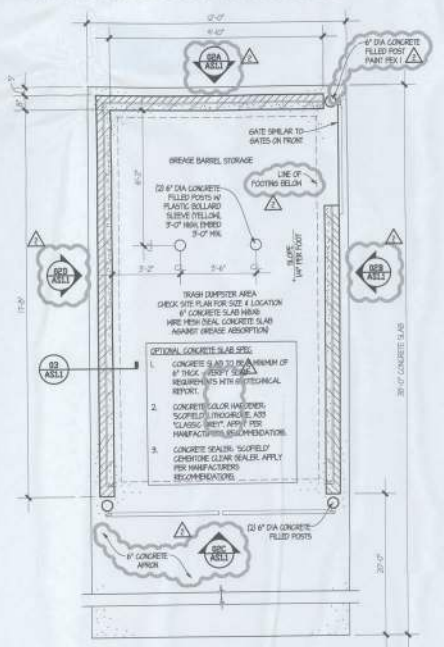
03 TRASH ENCLOSURE DETAIL
SCALE: 3/4" = 1'-0"



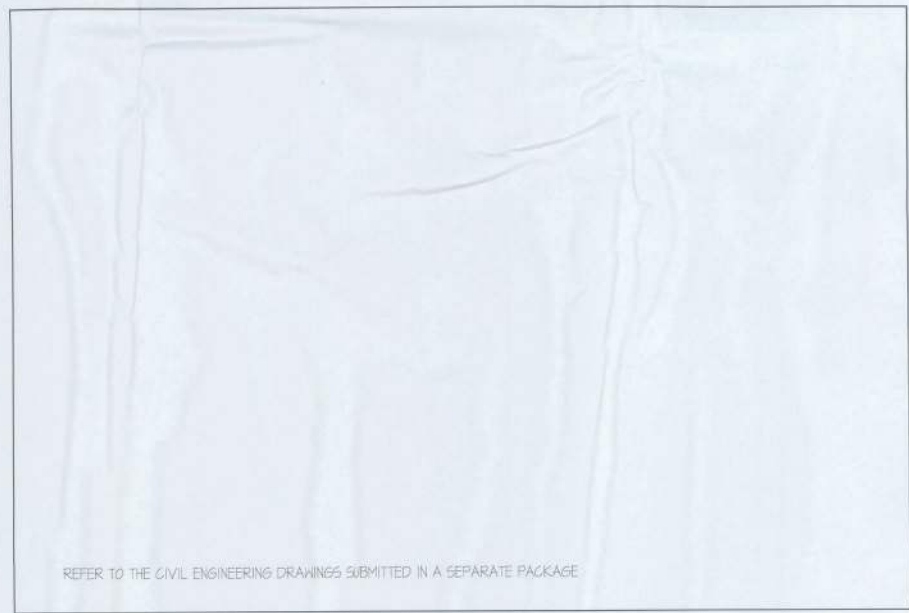
02 TRASH ENCLOSURE ELEVATIONS
SCALE: 3/4" = 1'-0"



07 PATIO PLAN
SCALE: 3/4" = 1'-0"



05 TRASH ENCLOSURE PLAN
SCALE: 3/4" = 1'-0"



01 ARCHITECTURAL SITE PLAN

SITE NUMBER: 11546
 BASE MODEL: 03000
 ASSET TYPE: FRANCHISE
 CLASSIFICATION: NEW
 OWNER: WEN-ONE OF FLORIDA, INC.
 BASE VERSION: 2014 JUL 03 R2
 UPDATE CLASSIFICATION:
 FROM NEW BASE
 PROJECT YEAR: 2014
 FURNITURE PACKAGE: 2014
 DESIGN BULLETINS: THRU 08 01

PROJECT TYPE: **E2000**
NEW

Wendy's.

REV.	DATE	DESCRIPTION
1	07/03/14	PROGRESS

DATE PLOTTED: OCTOBER 22, 2014
 PLOTTED BY: 1412
 DRAWN BY: KP
 CHECKED BY: DK

ARCHITECTURAL
 SITE PLAN

AS1.1

SITE NUMBER:	11846
BASE MODEL:	E2000
ASSET TYPE:	FRANCHISE
CLASSIFICATION:	NEW
OWNER:	WEN-DONE OF FLORIDA, INC.
BASE VERSION:	2014 JUL 03 R2
UPDATE CLASSIFICATION:	
FRAN NEW BASE:	
PROJECT YEAR:	2014
FURNITURE PACKAGE:	2014
DESIGN BULLETIN:	THRU 06 01

PROJECT TYPE: E2000
NEW

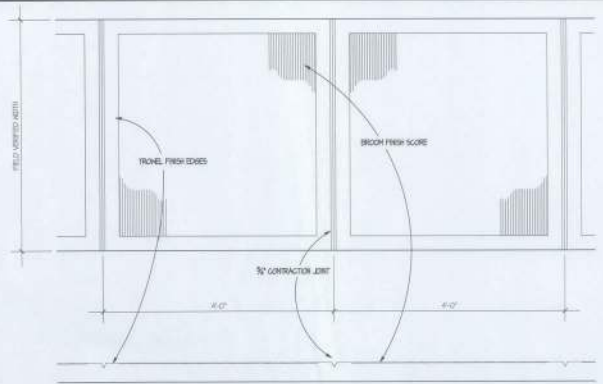
Wendy's

REV.	DATE	DESCRIPTION
1	07/03/14	PROGRESS
2		
3		
4		
5		
6		
7		
8		
9		
10		



SITE DETAILS

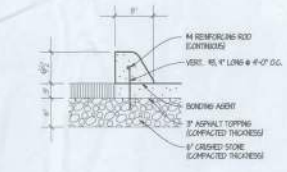
AS2.1



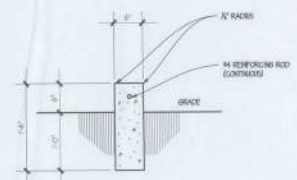
04 SIDEWALK FINISH DETAIL
SCALE: 1/2" = 1'-0"



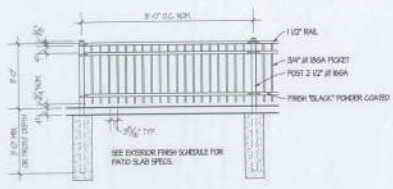
03 PAVEMENT MARKER DETAIL
SCALE: 1/2" = 1'-0"



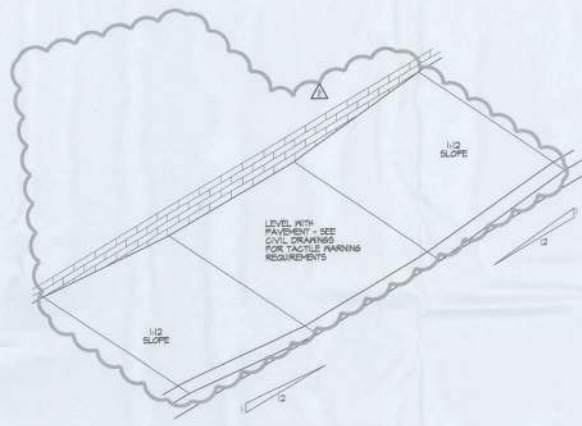
02 CONCRETE CURB DETAIL
SCALE: 1/2" = 1'-0"



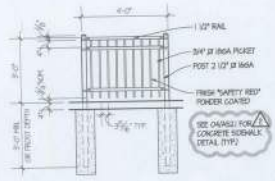
01 CONCRETE CURB DETAIL
SCALE: 1/2" = 1'-0"



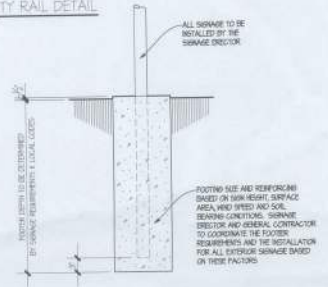
07 NEW PATIO FENCE DETAIL
SCALE: 3/8" = 1'-0"



06 SIDEWALK RAMP DETAIL
SCALE: 1/2" = 1'-0"

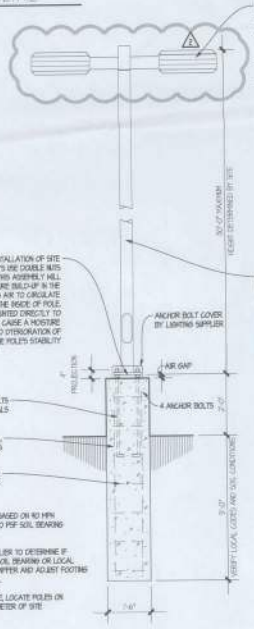


10 NEW SAFETY RAIL DETAIL
SCALE: 3/8" = 1'-0"



08 EXTERIOR POLE LIGHT DETAIL
SCALE: 1/2" = 1'-0"

- 09** SIGN BASE DETAIL
SCALE: 1/2" = 1'-0"
- LIGHTING NOTES:**
1. L.S. LED AREA LIGHTING, RE ELECTRICAL
 2. LOT IS REQUIRED TO HAVE AN MIN. AVERAGE OF 10 FOOTCANDLES AND THERE REQUIRED TO MAINTAIN A MINIMUM OF 2 FOOTCANDLES
 3. LIGHTING FIXTURE TO BE DARK BRONZE
 4. SEE SPECIFICATIONS FOR A LIST OF APPROVED SUPPLIES



05 NOT USED

SITE NUMBER:	11045
BASE MODEL:	E2000
ASSET TYPE:	FRANCHISEE
CLASSIFICATION:	NEW
OWNER:	WEN-DIE OF FLORIDA, INC.
BASE VERSION:	2014 JUL 03 R2
UPGRADE CLASSIFICATION:	FRAN NEW BASE
PROJECT YEAR:	2014
FURNITURE PACKAGE:	2014
DESIGN BULLETINS:	THRU DB 01

PROJECT TYPE: E2000
NEW

Wendy's.

REV.	DATE	DESCRIPTION

DATE PLOTTED: OCTOBER 22, 2014

PROJECT NUMBER: 1412

DRAWN BY: KP

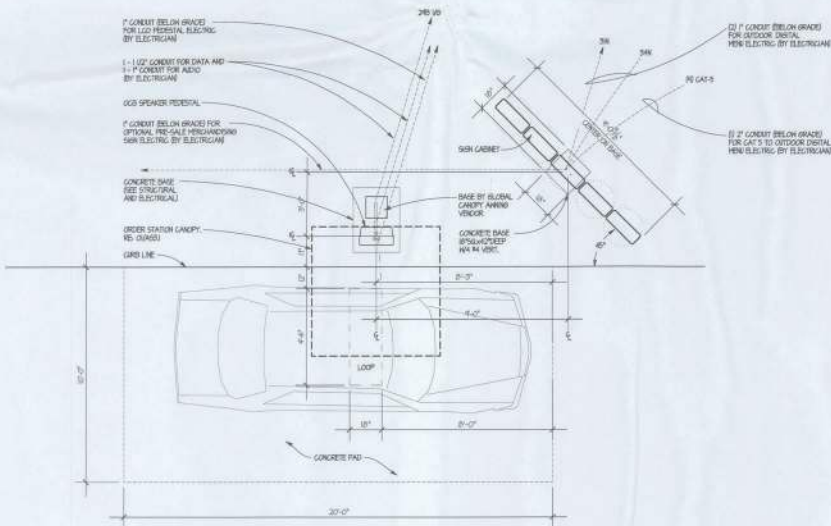
CHECKED BY: DK



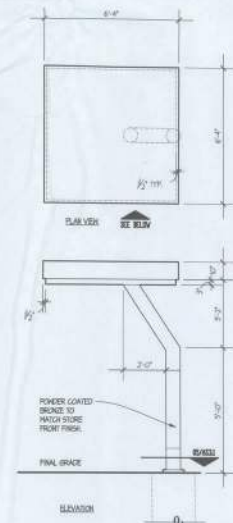
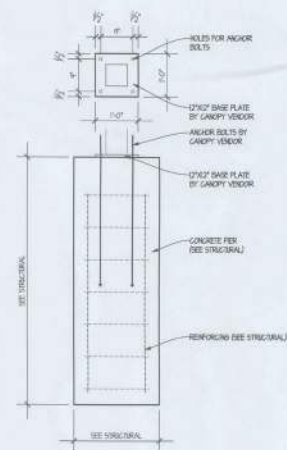
ORDER STATION
CANOPY

BASE NUMBER

AS3.1



NOTE: VERIFY SLAB THICKNESS WITH LOCAL PROFIT LINE THICKNESS OF SLAB TO BE NO LESS THAN 4\"/>



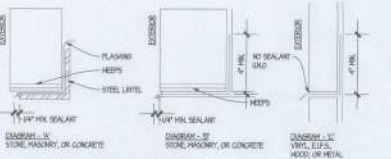
13 PARTIAL PLAN VIEW
SCALE: 3/8\"/>

05 CANOPY FOOTING SECTION
SCALE: 3/8\"/>

01 ORDER STATION CANOPY
SCALE: 3/8\"/>

GENERAL FLASHING REQUIREMENTS

- PROPERLY HEEL FLASHING POINTS & NORMAL DRAINAGE POINTS WITH HEELS & 1/4" O.C. MAX. SPACING. HEEL POINTS ARE TO BE LOCATED DIRECTLY ON TOP OF FLASHING.
- AT SPERMES EXTEND HEAD FLASHING BY 1/8" BEYOND FACE OF OPENING. TURN FLASHING 90° A MIN. OF ONE MASONRY COURSE IN HEAD JOINTS OR A MIN. OF 4" WHERE HEAD JOINTS DO NOT OCCUR. IN ORDER TO TURN A WATER DIRT.
- WHERE FLASHING IS LOCATED ON THE TOP OF STEEL ANGLES EXTEND FLASHING UP BEYOND THE DARTPOINT POINT OF THE ANGLE AND TO ALIGN FOR DRIP & SEALANT APPLICATION REFER TO DRAWING "A".
- WHERE FLASHING IS LOCATED IN MASONRY, EXTEND FLASHING A MIN. OF 1/4" BEYOND THE FACE OF THE MASONRY TO ALLOW FOR DRIP & SEALANT APPLICATION REFER TO DRAWING "A".
- WHERE FLASHING IS LOCATED TO TERMINATE ANOTHER SEPARATE MATERIALS DO NOT SEAL SINCE - REFER TO DRAWING "C". THESE IT IS DETERMINED BY THE MANUFACTURER OR OTHERWISE THAT SEALING IS REQUIRED TO PREVENT WATER PENETRATION BEYOND FLASHING DUE TO HARD DRIVEN NAILS. THIS SEALANT MUST BE HEATED IN ACCORDANCE WITH NOTE # ABOVE.
- UNLESS NOTED OTHERWISE, TURN FLASHING BY A MIN. OF 4" BEHIND APPROPRIATE MATERIALS.
- FLASHING CONDITIONS WHETHER DETAILED OR NOT, ARE TO BE IN ACCORDANCE WITH SPECIFICATIONS. WHERE UNUSUAL CONDITIONS OCCUR THAT ARE NOT DETAILED, FLASHING IS TO BE INSTALLED AS CLOSELY AS POSSIBLE TO THE SPECIFICATION, BUT NOT CLOSELY APPROXIMATES THE ACTUAL CONDITION.
- UNLESS NOTED OTHERWISE, AT FLASHING HIGH POINTS, TURN FLASHING HORIZONTALLY INTO ADJACENT MASONRY CORNER OR SEAL WATER TIGHT TO BANG-UP SUBSTRATE IF MASONRY DOES NOT EXIST.



BLDG. INSULATION SCHED. DIVISION 7

DESCRIPTION	THICKNESS (TOTAL R-VALUE)	LOCATION
RIGID FOUNDATION INSULATION BOARD EXPOSED POLYSTYRENE	2" R-4	PERIMETER FOUNDATION
FLEXIBLE BATT GLASS FIBER INSULATION UNFACED	6" R-20	EXTERIOR WALL CAVITY
FLEXIBLE ROOF BATT GLASS FIBER INSULATION UNFACED	6" R-20	ABOVE CEILING & ROOF
SOME ATTENTION FLEXIBLE BATT GLASS FIBER INSULATOR	5-1/2" UNF.	INTERIOR WALL CAVITY - REFER TO PARTITION TYPES
RIGID ROOF INSULATION BOARD POLYURETHANE/AMBIAT	VARIABLE	ABOVE ROOF DECK, THERM TO CEILING

BUILDING INSULATION GENERAL NOTES

- INSULATION LOCATIONS SHOWN IN SCHEDULE ARE INTENDED ONLY FOR CLARIFICATION PURPOSES & ARE NOT INTENDED TO BE ALL-ENCOMPASSING. PROVIDE EACH INSULATION TYPE AS REQUIRED TO FULLY PARTIAL THE THERMAL RESISTANCE OF THE CONSTRUCTION ASSEMBLY RELATED TO THE ENTIRE BUILDING ENVELOPE.

JOINT TREATMENT SCHEDULE (SEE SPECIFICATIONS - DIVISION 7 FOR CLARIFICATION OF TYPES)

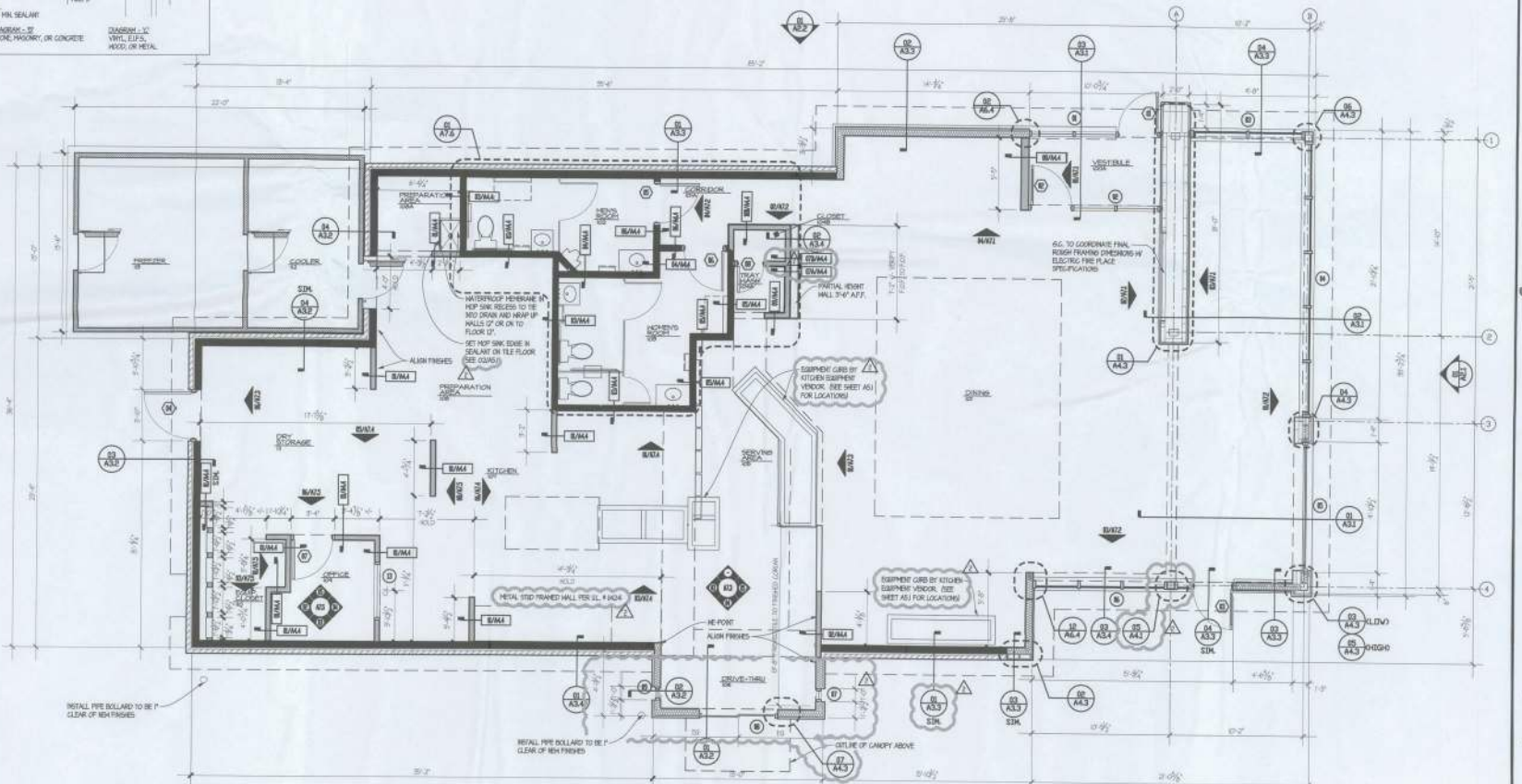
EXT. "E"	INT. "I"	CONDITION	TYPE
E	E	PERMITTED JOINTS OF BLOCK FRAMES, WINDOW FRAMES, SUBSTRATE, ANCHOR WINDOW WALL FRAME ASSEMBLY, LOADS, FIXTURES, AND OTHER PENETRATIONS IN THE BUILDING ENVELOPE(S) NOT OTHERWISE SEALED WATER/TIGHT, I.E. PROVIDE CONTINUOUS SEALANT UNDER INTERIOR DOOR	25-1
E	E	BASELINE/ANCHOR/CONTROL JOINTS IN WALLS	25-1
E	E	E.P.F.B. JOINTS IN WALLS	25-1
E	E	EXPANSION JOINTS IN AND AROUND CONCRETE PAVEMENT, UNIT PAVEMENT, CURBS, OR OTHER HORIZONTAL SURFACES	25-2
E	E	PERMITTED JOINTS AND OTHER OPEN JOINTS AT EXTERIOR DOORWAYS	25-1
E	E	INTERSECTION OF DISJUNCT MATERIALS THAT ALLOW AIR OR WATER INFILTRATION	25-1
E	E	INTERSECTION OF DISJUNCT MATERIALS IN WHICH INSTALLATION IS NOT UNIFORM OR WHERE WORKMANSHIP DOES NOT MEET ACCEPTABLE CONSTRUCTION TOLERANCES, BUT WHICH WORKMANSHIP IS ACCEPTED BY THE ARCHITECT	25-1
E	E	PERMITTED JOINTS ON INTERIOR SIDE OF DOOR FRAMES, WINDOW FRAMES, AND OTHER FRAMED MATERIALS IN WALLS WITH NO FINISHED EDGE FLANGE	25-3
I	I	OPEN JOINTS AT PENETRATIONS THROUGH WALLS, CONCRETE, PLASTER, OR O.P.F. BE. CEILING WHERE INTENDED TO BE TIGHT SEALED JOINTS	25-3
I	I	OPEN JOINT BETWEEN DISJUNCT MATERIALS WHERE INTENDED TO BE TIGHT SEALED JOINTS	25-2
I	I	JOINTS WHERE EDGE TRIM OF O.P.F. BE. ADJUTS IRREGULAR SURFACES OR OTHER SURFACES AND I EMVES OPEN JOINTS	25-2
I	I	EXPOSED JOINTS AT JUNCTURES OF COUNTERTOPS, CABINETS, OR OTHER "BUILT-UP" WORK WITH IRREGULAR SURFACES INTENDED TO BE TIGHT SEALED JOINT	25-2
I	I	EXPOSED JOINTS AT JUNCTURES OF WALL MOUNTED PLUMBING FIXTURES AND/OR TUBICLE ACCESSORIES WITH IRREGULAR SURFACES AND INTENDED TO BE TIGHT SEALED JOINT	25-2
I	I	CONTROL JOINTS, SAWY JOINTS AND OPEN JOINTS IN AND AROUND CONCRETE SLABS AND CURBS	25-4

JOINT TREATMENT NOTES

- THE JOINT TREATMENT SCHEDULE IS INTENDED TO ILLUSTRATE JOINT CONDITIONS WHICH ARE MEANT TO BE SEALED WHETHER REFERENCED FROM OTHER DETAILS OR NOT.
- AT METAL FRAME LOCATIONS (DOORS, WINDOWS, ETC.) SHOULD FRAME BACK FROM SUBSTRATE 3/8" @ HEAD & SILL AND 3/16" @ JAMB TO ALLOW FOR SEALANT. TYPICAL U.S.G.
- PROVIDE PROPER SEALERS AS REQUIRED TO FULLY CLOSE JOINTS THAT ARE INTENDED TO BE TIGHT AND AS SHOWN ON THE DRAWINGS.

- GENERAL NOTES**
- EXTERIOR OPENINGS ARE FRONT FACE OF SHEATHING TO FACE OF SHEATHING SING. INTERIOR OPENINGS ARE TO FACE OF SHEATHING SING.
 - COORDINATE GIRD GITS AT DOORS WITH EXISTING MANUFACTURER PRODUCT DETAILS AND SHOP DRAWINGS.
 - EXTERIOR WALLS SHALL BE INSULATED WITH 6" UNFACED BATT GLASS FIBER INSULATION AND HAVE 6 MIL POLY VAPOR RETARDER.
 - EXTERIOR FINISHES ARE NOTED ON EXTERIOR ELEVATIONS.
 - SEE FLOOR PLAN AND INTERIOR ELEVATIONS FOR LOCATIONS OF INTERIOR FINISHES.
 - INSTALL THREE CORNERAL MAP WEATHER BARRER OVER SHEATHING THERM METAL PANELS. PROVIDE LEAD-APPLIED WEATHER BARRER TO WEATHER AT EAVE'S LOCATIONS. PROVIDE TIE MANUFACTURER APPROVED WEATHER BARRER BEHIND WEATHER TIE. APPROVED ALTERNATE: METAL STD FLUID APPLIED AIR & MOISTURE BARRER BEHIND ALL EXTERIOR FINISHES.
 - THE CONTRACTOR SHALL PROVIDE AND INSTALL SOLID BRICK BLOCKS FOR WALL MEMBER TIE, SUPPLY, HANGING, ETC. COORDINATE LOCATIONS WITH OWNER'S CONSTRUCTION REPRESENTATIVE AS NECESSARY.

ATTENTION ALL BIDDERS
REFER TO WENDY'S OBTAIN SUPPLIER LIST TO GET NATIONAL ACCOUNT PHONE NUMBERS AND CONTACTS



01 FLOOR PLAN
SCALE: 1/4" = 1'-0"

SITE NUMBER: 11948
BASE MODEL: E2000
ASSET TYPE: FRANCHISEE
CLASSIFICATION: NEW
OWNER: WEN-ONE OF FLORIDA, INC.
BASE VERSION: 2014 JUL 03 02
UPGRADE CLASSIFICATION: FROM NEW BASE
PROJECT YEAR: 2014
FURNITURE PACKAGE: 2014
DESIGN BUILDING: THRU/08/01

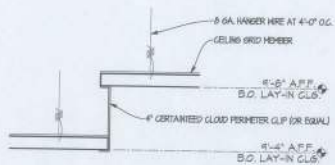
PROJECT TYPE: E2000
NEW

Wendy's

REV. DATE DESCRIPTION
17/03/14 PROGRESS
PROJECT NUMBER: 1412
DRAWN BY: KPT
CHECKED BY: DK
APPROVED BY: [Signature]
DATE: OCTOBER 22, 2014

FLOOR PLAN

A1.1



02 CEILING DETAIL
SCALE: 3/4" = 1'-0"

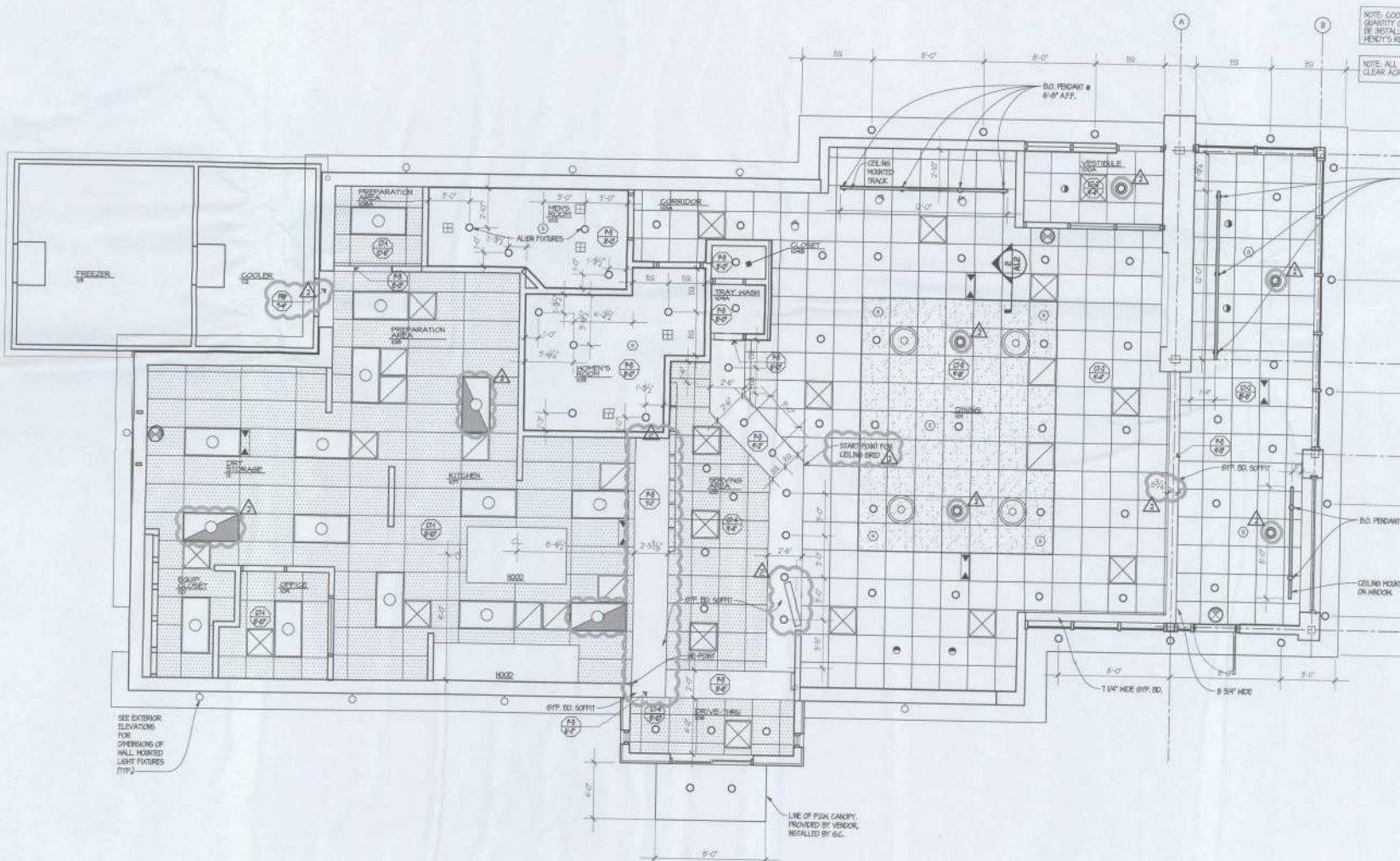
GENERAL NOTES

1. HOLD DOWN CLIPS SHALL BE PROVIDED FOR GELING TILES IN THE VESTIBLES.
2. SEE INTERIOR FINISH SPECIFICATIONS FOR GELING TILE.
3. DO NOT SCREW THE CEILING GRID TO THE STAINLESS STEEL HOODS, USE DOUBLE-FACED TAPE.
4. REFER TO ELECTRICAL AND/OR HVAC DRAWINGS FOR ADDITIONAL INFORMATION REGARDING FIXTURES, DEVICES AND EQUIPMENT SHOWN ON THIS PLAN.
5. TYPICAL RECESSED CAN FIXTURES TO BE CENTERED IN GELING TILE, UNO.
6. CENTER CEILING GRID WITH ROOM AREA UNLESS NOTED / DIMENSIONED OTHERWISE.
7. LOCATIONS OF EMERGENCY LIGHTING SHOWN FOR REFERENCE, FINAL LOCATIONS AND QUANTITIES TO BE APPROVED BY LOCAL FIRE INSPECTOR.
8. SEE FINAL APPROVED SECURITY PLAN FOR LOCATIONS OF GELING MOUNTED CAMERAS AND MONITORS.

ATTENTION ALL BIDDERS
REFER TO MENDY'S APPROVED SUPPLIER LIST TO OBTAIN NATIONAL ACCOUNT PHONE NUMBERS AND CONTACTS

RCP LEGEND

- FLUORESCENT LIGHT FIXTURE
- FLUORESCENT LIGHT FIXTURE ON NIGHT LIGHT CIRCUIT
- CEILING TILE G1-2
- SUSPENDED ACOUSTICAL CEILING TILE G1-3
- HIGHLY SUSPENDED ACOUSTICAL CEILING TILE G1-4
- SUPPLY AIR DIFFUSER
- RETURN AIR DIFFUSER



01 REFLECTED CEILING PLAN
SCALE: 1/4" = 1'-0"

SITE NUMBER: 11543
 BASE MODEL: E2000
 ASSET TYPE: FRANCHISE
 CLASSIFICATION: NEW
 OWNER: WEN-ONE OF FLORIDA, INC.
 BASE VERSION: 2014 JUL 03 02
 UPGRADE CLASSIFICATION:
 FROM NEW BASE
 PROJECT YEAR: 2014
 FURNITURE PACKAGE: 2014
 DESIGN SHEETS: THRU 08 01

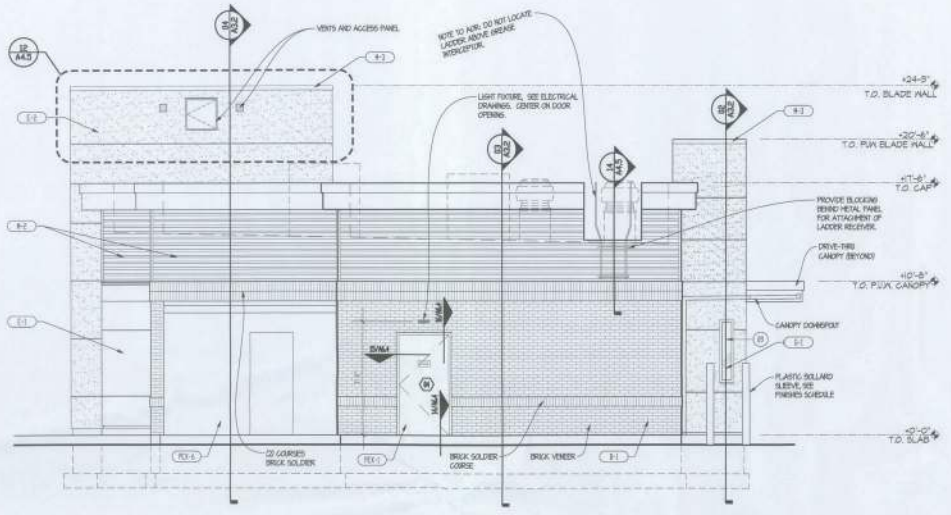
EXTERIOR FINISHES LEGEND

- NOTE: REFER TO SHEET A61 FOR SPECIFICATIONS OF EXTERIOR MATERIALS AND FINISHES.
- (B1) BRICK
 - (B1.1) GARDEN WALL
 - (B1.2) EXTERIOR RELATED FINISH SYSTEM BUILT TO "COVER NOT" OR APPROVED MANUFACTURER'S COLOR
 - (B1.3) EXTERIOR RELATED FINISH SYSTEM (EFL) - "NET"
 - (B1.4) FLUKE RELATED GLASS
 - (B1.5) 2" INSULATED SPANREL SLAB
 - (B1.6) 1/4" SPANREL SLAB
 - (B1.7) METAL TRIM AND BREAK METAL (DARK BRONZE)
 - (B1.8) CORRUGATED METAL PANEL (DARK BRONZE)
 - (B1.9) METAL COFFER (RED)
 - (B1.10) PAINT COLOR: HENRY'S DARK BRONZE
 - (B1.11) PAINT COLOR: HENRY'S EXTERIOR RED
 - (B1.12) PAINT COLOR: HENRY'S DARK BRONZE - PULVER (SINK ONLY)
 - (B1.13) PAINT COLOR: HENRY'S GREY
 - (B1.14) PAINT COLOR: SAFETY RED
 - (B1.15) PAINT COLOR: HENRY'S DARK BRONZE - COOLER BOX ONLY
 - (B1.16) PAINT COLOR: HENRY'S FELD BROWN
 - (B1.17) PAINT COLOR: HENRY'S ALBERT BROWN
 - (B1.18) POLYMERWOOD
 - (B1.19) ALUMINUM SCREENFRONT SYSTEM
 - (B1.20) EXTERIOR TILE

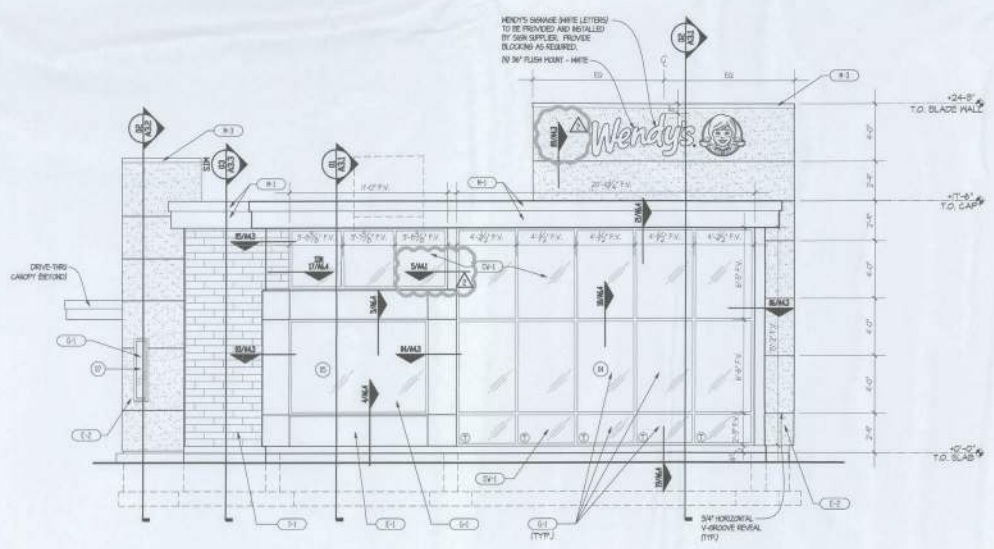
OPTIONAL ROOF SCREENS:

CITYCAPES (NOT MOUNTED) VERTICAL ROOF SCREEN SYSTEM WITH LOWER PANELS, STEP 2 TOP TRIM, COLOR: MANGROVE BROWN.
 WWW.CITYCAPES.COM

DESIGNER NOTES



02 REAR ELEVATION
SCALE: 3/8" = 1'-0"



01 FRONT ELEVATION
SCALE: 3/8" = 1'-0"

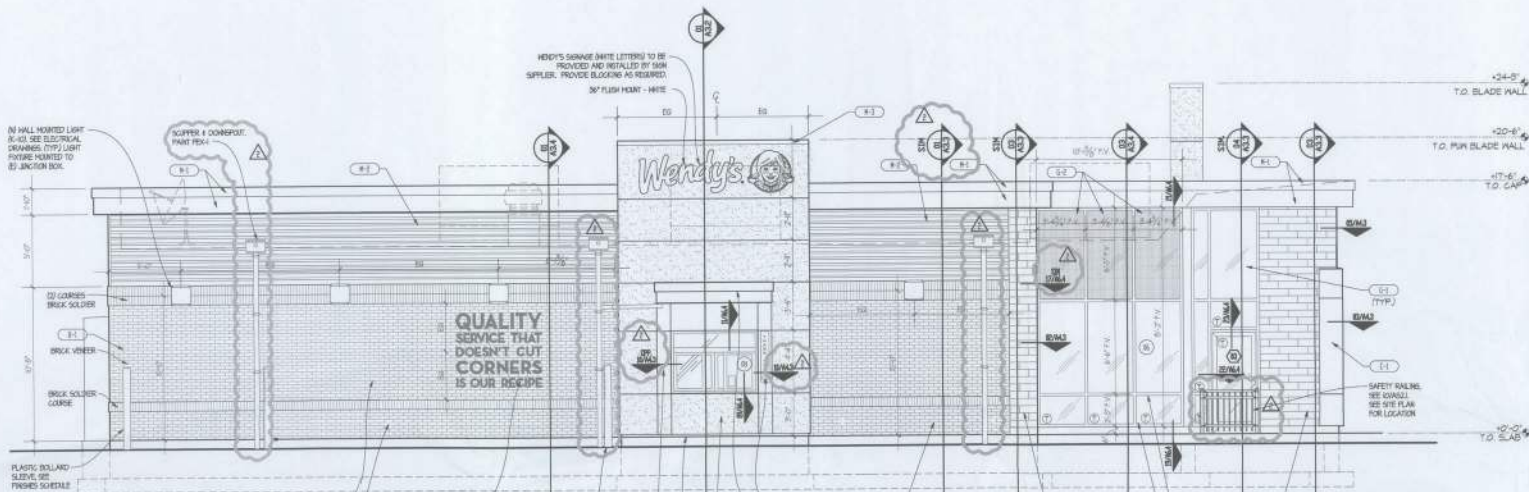
Wendy's

REV.	DATE	DESCRIPTION
01	05/14	PROGRESS

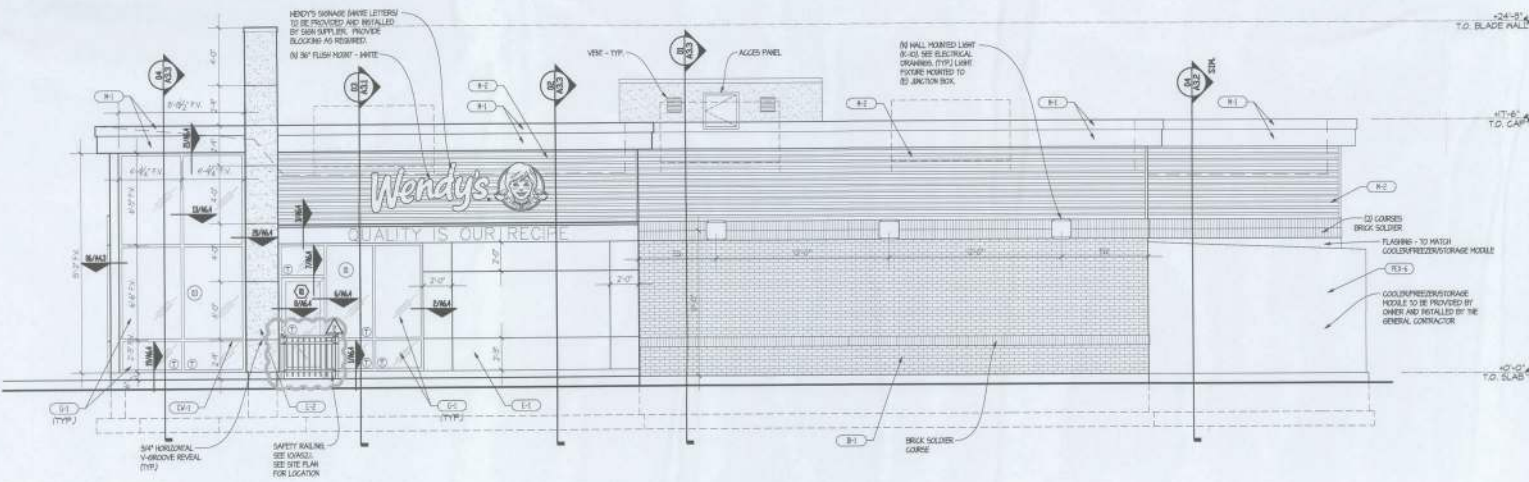


EXTERIOR ELEVATIONS

A2.1



02 LEFT ELEVATION
SCALE: 1/8" = 1'-0"



01 RIGHT ELEVATION
SCALE: 1/8" = 1'-0"

EXTERIOR FINISHES LEGEND

NOTE: REFER TO SHEET A01 FOR SPECIFICATIONS OF EXTERIOR MATERIALS AND FINISHES.

- (B1) BRICK
- (C1) CROWN MALL
- (E1) EXTERIOR INSULATED FINISH SYSTEM EQUAL "COVER SET" OR APPROVED MANUFACTURERS COLOR
- (E2) EXTERIOR INSULATED FINISH SYSTEM EQUAL "SEEP"
- (G1) 1" LONE ENGLAND GLASS
- (G2) 1" INSULATED SPANDREL GLASS
- (G3) 1" SPANDREL GLASS
- (H1) METAL SIGN AND BREAK METAL (DARK BRONZE)
- (H2) CORRUGATED METAL PANEL (DARK BRONZE)
- (H3) METAL COPING (SEE)
- (R1) PAINT COLOR: HENDY'S DARK BRONZE
- (R2) PAINT COLOR: HENDY'S EXTERIOR RED
- (R3) PAINT COLOR: HENDY'S DARK BRONZE - (PULVERIZER ONLY)
- (R4) PAINT COLOR: HENDY'S GREY
- (R5) PAINT COLOR: SAFETY RED
- (R6) PAINT COLOR: HENDY'S DARK BRONZE - (COOLER BOX ONLY)
- (R7) PAINT COLOR: HENDY'S PEEL BRONZE
- (R8) PAINT COLOR: HENDY'S ACCENT BROWN
- (F1) POISSONIER
- (S1) ALUMINUM SHOWERHEAD SYSTEM
- (T1) EXTERIOR TILE

OPTIONAL ROOF SCREENS:

CITYSCAPES INST-MOUNTED VERTICAL ROOF SCREEN SYSTEM WITH LOWER PANELS, STEP 2 TOP TRIM, COLOR: HANDED BRONZE.
WWW.CITYSCAPES.COM

DESIGNER NOTES

SITE NUMBER:	11545
BASE MODEL:	E2000
ASSET TYPE:	FRANCHISE
CLASSIFICATION:	NEW
OWNER:	WEN-DONS OF FLORIDA, INC.
BASE VERSION:	2014 JUL 03 R2
UPGRADE CLASSIFICATION:	FRAN NEW BASE
PROJECT YEAR:	2014
FURNITURE PACKAGE:	2014
DESIGN BULLETINS:	THRU 09 01

PROJECT TYPE: **E2000 NEW**



REV.	DATE	DESCRIPTION
1	07/03/14	PROGRESS

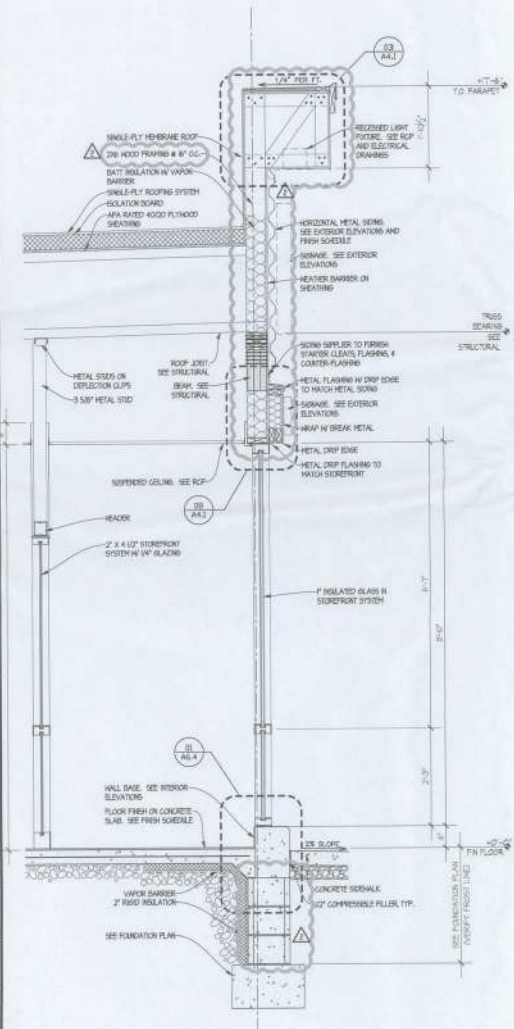
APP. DATE:	OCTOBER 22, 2014
PROJECT NUMBER:	1412
DRAWN BY:	WSP
CHECKED BY:	DK



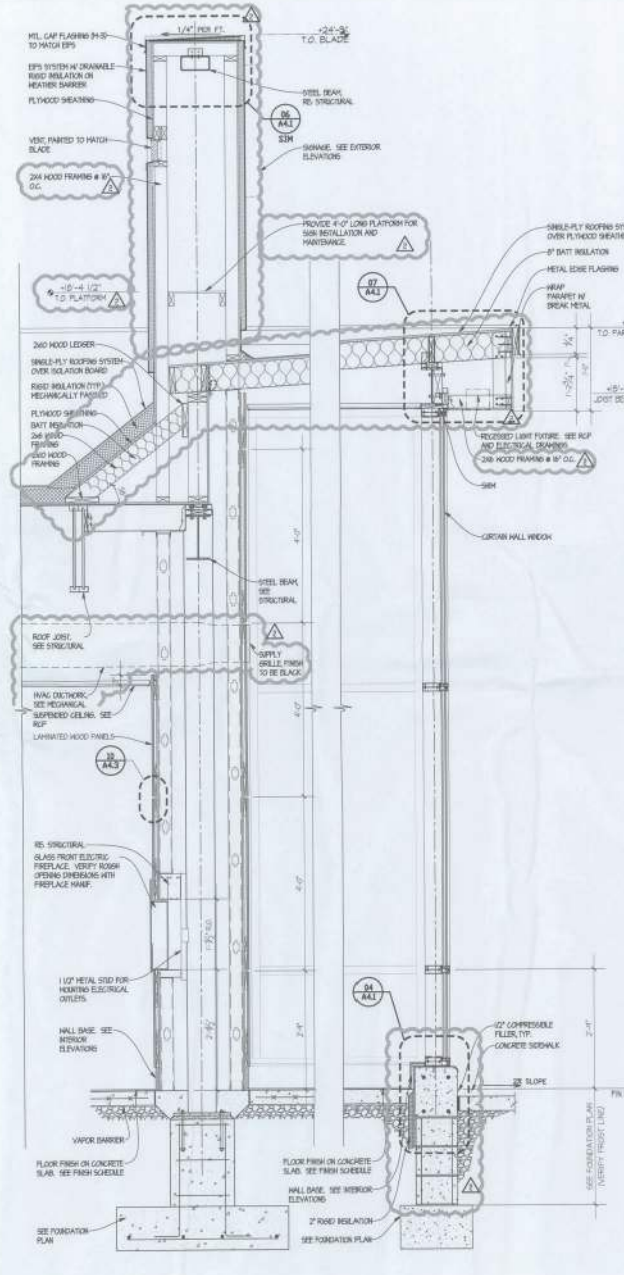
EXTERIOR ELEVATIONS

A2.2

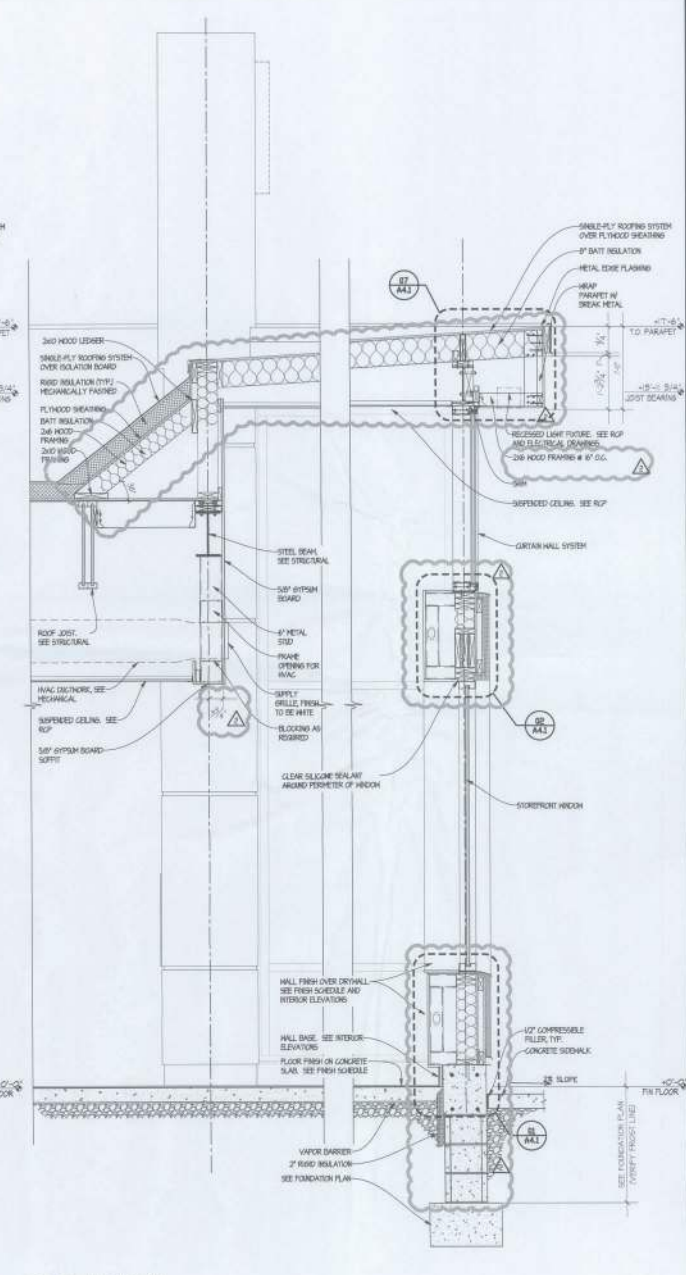
- SPECIAL NOTE**
1. SEAL EXTERIOR WALL AND ROOF PENETRATIONS AND JOINTS BETWEEN DISSIMILAR MATERIALS TO ENSURE A COMPLETELY WEATHER-TIGHT SEAL. SEALANT LOCATIONS INCLUDE BUT ARE NOT LIMITED TO: LIGHT FIXTURES, WORKS, DOOR AND WINDOW FRAMES, PAGA SIZES, SERVICE POINTS, CONCRETE PENETRATIONS, GUTTERS, ELECTRICAL, DUCTS, ROSE BIMS, AND UTILITY SERVICE BRACKETS.
 2. INSTALL TYVEK GOMERICAL GRADE BARRIER AROUND EXTERIOR METAL SCANS AND BREAK METAL. INSTALL FLUID APPLIED WEATHER BARRIER BEHIND DRAINABLE EPS. METAL TILE MANUFACTURER APPROVED WEATHER BARRIER BEHIND EXTERIOR CEILING. TILE APPROVED ALTERNATE: METAL STD STD APPLIED AROUND AND WEATHER BARRIER BEHIND ALL ROOFING FRAMES.
 3. EXTERIOR SIGNALS AND PAVING ARE SHOWN FOR DESIGN INTENT ONLY. GC SHALL BE RESPONSIBLE FOR COORDINATING SCOPE OF WORK WITH OTHERS REPRESENTATIVE AND OR CIVIL DRAWINGS.
 4. GRAPES SHALL BE 2" MIN BELOW FLOOR SLAB AND SHALL SLOPE AWAY FROM BUILDING.
 5. ITEMS MOUNTED ON TOP OF THE FRAMEWORK ARE TO BE SET IN A HELL BED OF SEALANT AND HAVE FULL DEPTH BLOCKING IMMEDIATELY BELOW CAP.
 6. SEE STRUCTURAL PLAN AND DETAILS FOR ADDITIONAL FRAMING REQUIREMENTS.



03 WALL SECTION
SCALE: 3/4" = 1'-0"



02 WALL SECTION
SCALE: 3/4" = 1'-0"



01 WALL SECTION
SCALE: 3/4" = 1'-0"

DATE NUMBER:	11545
BASE MODEL:	E2000
ASSET TYPE:	FRANCHISE
CLASSIFICATION:	NEW
OWNER:	WEN-ONE OF FLORIDA, INC.
BASE VERSION:	2014 JUL 05 R2
UPGRADE CLASSIFICATION:	
FROM NEW BASE:	
PROJECT YEAR:	2014
FURNITURE PACKAGE:	2014
DESIGN BULLETIN:	THRU DR 01

PROJECT TYPE: **E2000 NEW**

Wendy's

REV	DATE	DESCRIPTION
1	07/23/14	PROGRESS

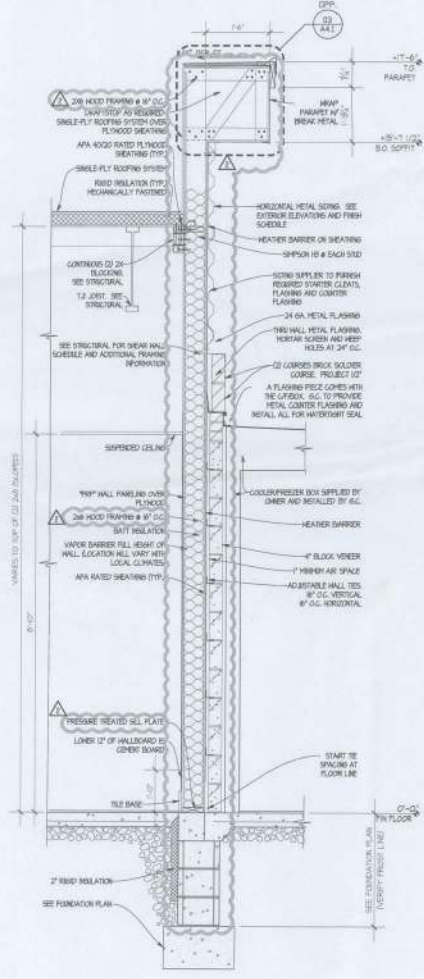
ISSUE DATE:	OCTOBER 22, 2014
PROJECT NUMBER:	1415
DESIGNER:	RP
CHECKER:	DK

WALL SECTIONS

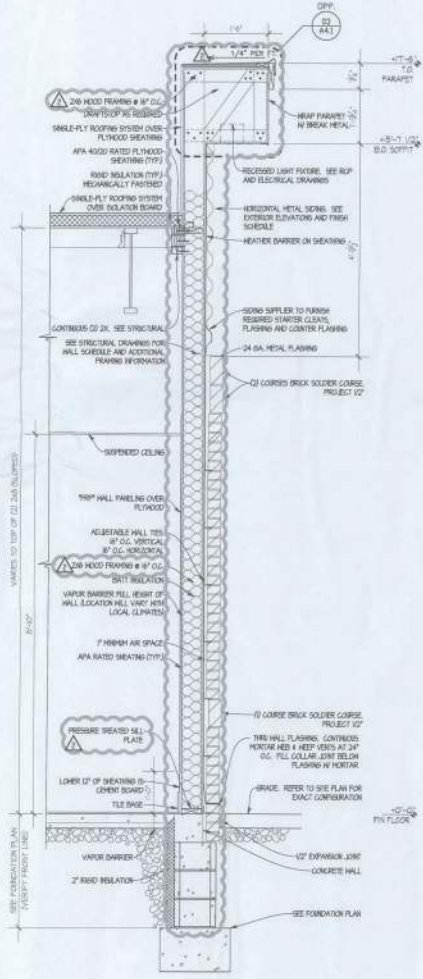
A3.1

GENERAL NOTES

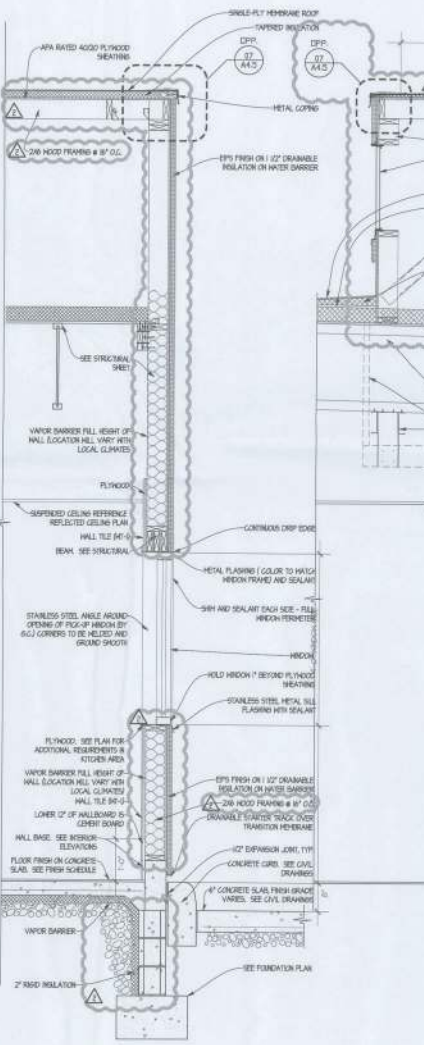
1. SEAL EXTERIOR WALL AND ROOF PENETRATIONS AND JOINTS BETWEEN DISSIMILAR MATERIALS TO ENSURE A COMPLETELY WEATHER-TIGHT SEAL. SEALANT LOCATIONS INCLUDE BUT ARE NOT LIMITED TO LIGHT FIXTURE MOUNTS, DOOR AND WINDOW FRAMES, FLAGPOLE DECKS, SWANAGE PLANTS, CONCRETE STRUCTURING, SUMPINGS, ELECTRICAL, GASSETS, HOSE BIRS, AND UTILITY SERVICE ENTRANCES.
2. METAL FLASHING CONCRETE BRACKETS SHALL BE WRAP FINISH EXTERIOR METAL FLASHING AND BREAK METAL. METAL FLASHING SHALL BE 2" MIN. BELOW FLOOR SLAB AND SHALL HAVE A MIN. 1" FROM FINISH FLOORING.
3. EXTERIOR SCHEDULES AND FINISHES ARE SHOWN FOR DESIGN INTENT ONLY. S.C. SHALL BE RESPONSIBLE FOR COORDINATING SCOPE OF WORK WITH OWNERS REPRESENTATIVE AND CIVIL DRAWINGS.
4. BRACKETS SHALL BE 2" MIN. BELOW FLOOR SLAB AND SHALL HAVE A MIN. 1" FROM FINISH FLOORING.
5. 2" MIN. HOISTED ON TOP OF THE PARAPET ARE TO BE SET IN A FULL BED OF SEALANT AND HAVE FULL GIRTH BLOCKING IMMEDIATELY BELOW CAP.
6. SEE STRUCTURAL PLAN AND DETAILS FOR ADDITIONAL FINISHING REQUIREMENTS.



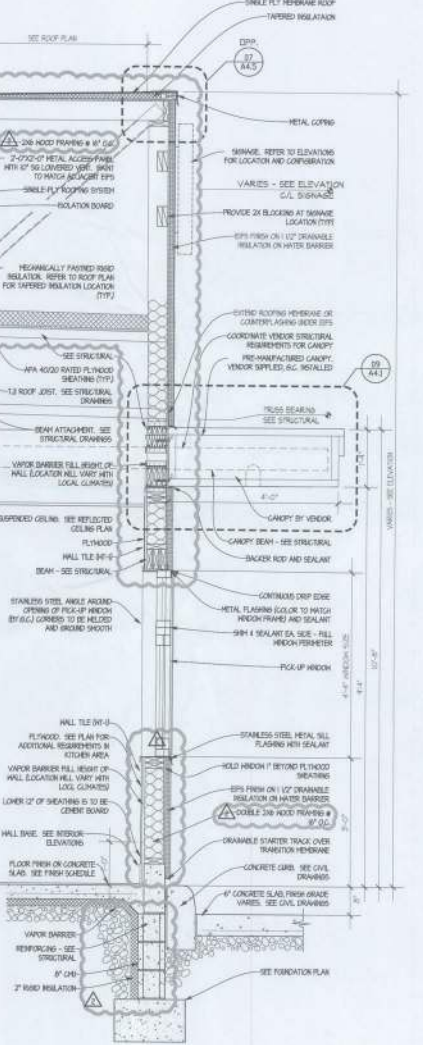
04 WALL SECTION
SCALE: 3/4" = 1'-0"



03 WALL SECTION
SCALE: 3/4" = 1'-0"



02 WALL SECTION
SCALE: 3/4" = 1'-0"



01 WALL SECTION
SCALE: 3/4" = 1'-0"

SITE NUMBER:	11545
BASE MODEL:	E2000
ASSET TYPE:	FRANCHISE
CLASSIFICATION:	NEW
OWNER:	WEN-ONE OF FLORIDA, INC
BASE VERSION:	2014 JUL 02
UPDATE CLASSIFICATION:	
FRAN NEW BASE:	2014
PROJECT YEAR:	2014
FURNITURE PACKAGE:	2014
DESIGN BULLETIN:	THRU 01

PROJECT TYPE: **E2000**
NEW

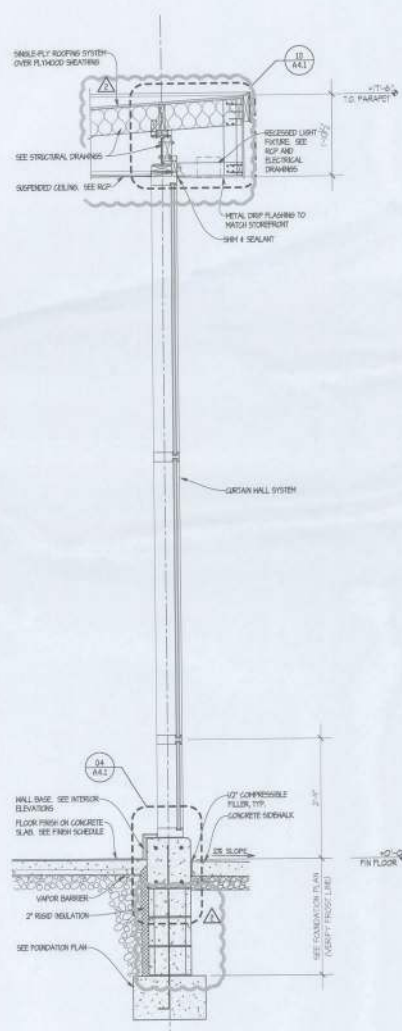
Wendy's.

REV:	DATE:	DESCRIPTION:
07/03/14		PROGRESS
08/05/14		PROGRESS
09/05/14		PROGRESS
10/05/14		PROGRESS
11/05/14		PROGRESS
12/05/14		PROGRESS
01/05/15		PROGRESS
02/05/15		PROGRESS
03/05/15		PROGRESS
04/05/15		PROGRESS
05/05/15		PROGRESS
06/05/15		PROGRESS
07/05/15		PROGRESS
08/05/15		PROGRESS
09/05/15		PROGRESS
10/05/15		PROGRESS
11/05/15		PROGRESS
12/05/15		PROGRESS
01/05/16		PROGRESS
02/05/16		PROGRESS
03/05/16		PROGRESS
04/05/16		PROGRESS
05/05/16		PROGRESS
06/05/16		PROGRESS
07/05/16		PROGRESS
08/05/16		PROGRESS
09/05/16		PROGRESS
10/05/16		PROGRESS
11/05/16		PROGRESS
12/05/16		PROGRESS
01/05/17		PROGRESS
02/05/17		PROGRESS
03/05/17		PROGRESS
04/05/17		PROGRESS
05/05/17		PROGRESS
06/05/17		PROGRESS
07/05/17		PROGRESS
08/05/17		PROGRESS
09/05/17		PROGRESS
10/05/17		PROGRESS
11/05/17		PROGRESS
12/05/17		PROGRESS
01/05/18		PROGRESS
02/05/18		PROGRESS
03/05/18		PROGRESS
04/05/18		PROGRESS
05/05/18		PROGRESS
06/05/18		PROGRESS
07/05/18		PROGRESS
08/05/18		PROGRESS
09/05/18		PROGRESS
10/05/18		PROGRESS
11/05/18		PROGRESS
12/05/18		PROGRESS
01/05/19		PROGRESS
02/05/19		PROGRESS
03/05/19		PROGRESS
04/05/19		PROGRESS
05/05/19		PROGRESS
06/05/19		PROGRESS
07/05/19		PROGRESS
08/05/19		PROGRESS
09/05/19		PROGRESS
10/05/19		PROGRESS
11/05/19		PROGRESS
12/05/19		PROGRESS
01/05/20		PROGRESS
02/05/20		PROGRESS
03/05/20		PROGRESS
04/05/20		PROGRESS
05/05/20		PROGRESS
06/05/20		PROGRESS
07/05/20		PROGRESS
08/05/20		PROGRESS
09/05/20		PROGRESS
10/05/20		PROGRESS
11/05/20		PROGRESS
12/05/20		PROGRESS
01/05/21		PROGRESS
02/05/21		PROGRESS
03/05/21		PROGRESS
04/05/21		PROGRESS
05/05/21		PROGRESS
06/05/21		PROGRESS
07/05/21		PROGRESS
08/05/21		PROGRESS
09/05/21		PROGRESS
10/05/21		PROGRESS
11/05/21		PROGRESS
12/05/21		PROGRESS
01/05/22		PROGRESS
02/05/22		PROGRESS
03/05/22		PROGRESS
04/05/22		PROGRESS
05/05/22		PROGRESS
06/05/22		PROGRESS
07/05/22		PROGRESS
08/05/22		PROGRESS
09/05/22		PROGRESS
10/05/22		PROGRESS
11/05/22		PROGRESS
12/05/22		PROGRESS
01/05/23		PROGRESS
02/05/23		PROGRESS
03/05/23		PROGRESS
04/05/23		PROGRESS
05/05/23		PROGRESS
06/05/23		PROGRESS
07/05/23		PROGRESS
08/05/23		PROGRESS
09/05/23		PROGRESS
10/05/23		PROGRESS
11/05/23		PROGRESS
12/05/23		PROGRESS
01/05/24		PROGRESS
02/05/24		PROGRESS
03/05/24		PROGRESS
04/05/24		PROGRESS
05/05/24		PROGRESS
06/05/24		PROGRESS
07/05/24		PROGRESS
08/05/24		PROGRESS
09/05/24		PROGRESS
10/05/24		PROGRESS
11/05/24		PROGRESS
12/05/24		PROGRESS
01/05/25		PROGRESS
02/05/25		PROGRESS
03/05/25		PROGRESS
04/05/25		PROGRESS
05/05/25		PROGRESS
06/05/25		PROGRESS
07/05/25		PROGRESS
08/05/25		PROGRESS
09/05/25		PROGRESS
10/05/25		PROGRESS
11/05/25		PROGRESS
12/05/25		PROGRESS
01/05/26		PROGRESS
02/05/26		PROGRESS
03/05/26		PROGRESS
04/05/26		PROGRESS
05/05/26		PROGRESS
06/05/26		PROGRESS
07/05/26		PROGRESS
08/05/26		PROGRESS
09/05/26		PROGRESS
10/05/26		PROGRESS
11/05/26		PROGRESS
12/05/26		PROGRESS
01/05/27		PROGRESS
02/05/27		PROGRESS
03/05/27		PROGRESS
04/05/27		PROGRESS
05/05/27		PROGRESS
06/05/27		PROGRESS
07/05/27		PROGRESS
08/05/27		PROGRESS
09/05/27		PROGRESS
10/05/27		PROGRESS
11/05/27		PROGRESS
12/05/27		PROGRESS
01/05/28		PROGRESS
02/05/28		PROGRESS
03/05/28		PROGRESS
04/05/28		PROGRESS
05/05/28		PROGRESS
06/05/28		PROGRESS
07/05/28		PROGRESS
08/05/28		PROGRESS
09/05/28		PROGRESS
10/05/28		PROGRESS
11/05/28		PROGRESS
12/05/28		PROGRESS
01/05/29		PROGRESS
02/05/29		PROGRESS
03/05/29		PROGRESS
04/05/29		PROGRESS
05/05/29		PROGRESS
06/05/29		PROGRESS
07/05/29		PROGRESS
08/05/29		PROGRESS
09/05/29		PROGRESS
10/05/29		PROGRESS
11/05/29		PROGRESS
12/05/29		PROGRESS
01/05/30		PROGRESS
02/05/30		PROGRESS
03/05/30		PROGRESS
04/05/30		PROGRESS
05/05/30		PROGRESS
06/05/30		PROGRESS
07/05/30		PROGRESS
08/05/30		PROGRESS
09/05/30		PROGRESS
10/05/30		PROGRESS
11/05/30		PROGRESS
12/05/30		PROGRESS
01/05/31		PROGRESS
02/05/31		PROGRESS
03/05/31		PROGRESS
04/05/31		PROGRESS
05/05/31		PROGRESS
06/05/31		PROGRESS
07/05/31		PROGRESS
08/05/31		PROGRESS
09/05/31		PROGRESS
10/05/31		PROGRESS
11/05/31		PROGRESS
12/05/31		PROGRESS

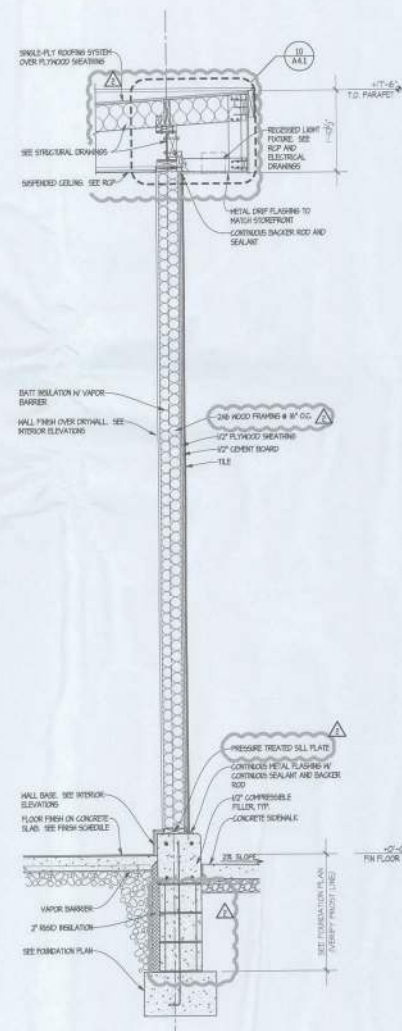
REV:	DATE:	DESCRIPTION:
07/03/14		PROGRESS
08/05/14		PROGRESS
09/05/14		PROGRESS
10/05/14		PROGRESS
11/05/14		PROGRESS
12/05/14		PROGRESS
01/05/15		PROGRESS
02/05/15		PROGRESS
03/05/15		PROGRESS
04/05/15		PROGRESS
05/05/15		PROGRESS
06/05/15		PROGRESS
07/05/15		PROGRESS
08/05/15		PROGRESS
09/05/15		PROGRESS
10/05/15		PROGRESS
11/05/15		PROGRESS
12/05/15		PROGRESS
01/05/16		PROGRESS
02/05/16		PROGRESS
03/05/16		PROGRESS
04/05/16		PROGRESS
05/05/16		PROGRESS
06/05/16		PROGRESS
07/05/16		PROGRESS
08/05/16		PROGRESS
09/05/16		PROGRESS
10/05/16		PROGRESS
11/05/16		PROGRESS
12/05/16		PROGRESS
01/05/17		PROGRESS
02/05/17		PROGRESS
03/05/17		PROGRESS
04/05/17		PROGRESS
05/05/17		PROGRESS
06/05/17		PROGRESS
07/05/17		PROGRESS
08/05/17		PROGRESS
09/05/17		PROGRESS
10/05/17		PROGRESS
11/05/17		PROGRESS
12/05/17		PROGRESS
01/05/18		PROGRESS
02/05/18		PROGRESS
03/05/18		PROGRESS
04/05/18		PROGRESS
05/05/18		PROGRESS
06/05/18		PROGRESS
07/05/18		PROGRESS
08/05/18		PROGRESS
09/05/18		PROGRESS
10/05/18		PROGRESS
11/05/18		PROGRESS
12/05/18		PROGRESS
01/05/19		PROGRESS
02/05/19		PROGRESS
03/05/19		PROGRESS
04/05/19		PROGRESS
05/05/19		PROGRESS
06/05/19		PROGRESS
07/05/19		PROGRESS
08/05/19		PROGRESS
09/05/19		PROGRESS
10/05/19		PROGRESS
11/05/19		PROGRESS
12/05/19		PROGRESS
01/05/20		PROGRESS
02/05/20		PROGRESS
03/05/20		PROGRESS
04/05/20		PROGRESS
05/05/20		PROGRESS
06/05/20		PROGRESS
07/05/20		PROGRESS
08/05/20		PROGRESS
09/05/20		PROGRESS
10/05/20		PROGRESS
11/05/20		PROGRESS
12/05/20		PROGRESS
01/05/21		PROGRESS
02/05/21		PROGRESS
03/05/21		PROGRESS
04/05/21		PROGRESS
05/05/21		PROGRESS
06/05/21		PROGRESS
07/05/21		PROGRESS
08/05/21		PROGRESS
09/05/21		PROGRESS
10/05/21		PROGRESS
11/05/21		PROGRESS
12/05/21		PROGRESS
01/05/22		PROGRESS
02/05/22		PROGRESS
03/05/22		PROGRESS
04/05/22		PROGRESS
05/05/22		PROGRESS
06/05/22		PROGRESS
07/05/22		PROGRESS
08/05/22		PROGRESS
09/05/22		PROGRESS
10/05/22		PROGRESS
11/05/22		PROGRESS
12/05/22		PROGRESS
01/05/23		PROGRESS
02/05/23		PROGRESS
03/05/23		PROGRESS
04/05/23		PROGRESS
05/05/23		PROGRESS
06/05/23		PROGRESS
07/05/23		PROGRESS
08/05/23		PROGRESS
09/05/23		PROGRESS
10/05/23		PROGRESS
11/05/23		PROGRESS
12/05/23		PROGRESS
01/05/24		PROGRESS
02/05/24		PROGRESS
03/05/24		PROGRESS
04/05/24		PROGRESS
05/05/24		PROGRESS
06/05/24		PROGRESS
07/05/24		PROGRESS
08/05/24		PROGRESS
09/05/24		PROGRESS
10/05/24		PROGRESS
11/05/24		PROGRESS
12/05/24		PROGRESS
01/05/25		PROGRESS
02/05/25		PROGRESS
03/05/25		PROGRESS
04/05/25		PROGRESS
05/05/25		PROGRESS
06/05/25		PROGRESS
07/05/25		PROGRESS
08/05/25		PROGRESS
09/05/25		PROGRESS
10/05/25		PROGRESS
11/05/25		PROGRESS
12/05/25		PROGRESS
01/05/26		PROGRESS
02/05/26		PROGRESS
03/05/26		PROGRESS
04/05/26		PROGRESS
05/05/26		PROGRESS
06/05/26		PROGRESS
07/05/26		PROGRESS
08/05/26		PROGRESS
09/05/26		PROGRESS
10/05/26		PROGRESS
11/05/26		PROGRESS
12/05/26		PROGRESS
01/05/27		PROGRESS
02/05/27		PROGRESS
03/05/27		PROGRESS
04/05/27		PROGRESS
05		

GENERAL NOTES

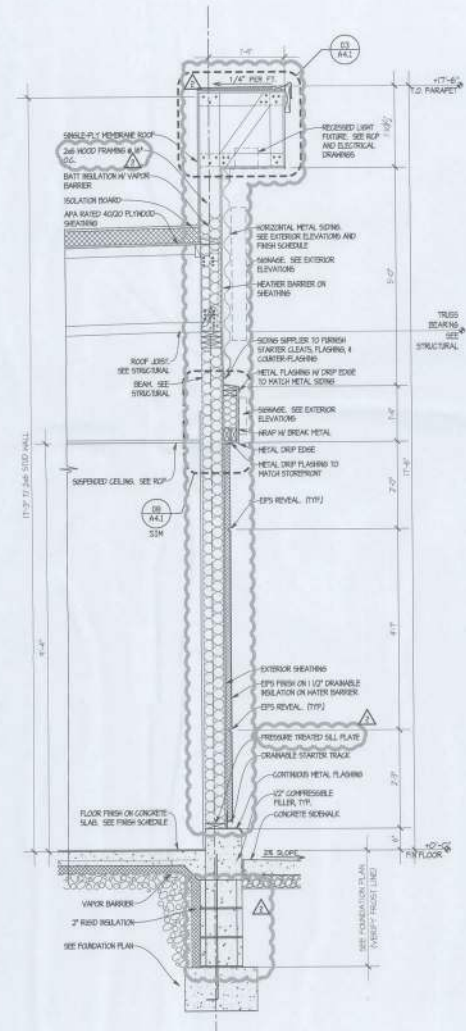
1. SEAL EXTERIOR WALL AND ROOF PENETRATIONS AND JOINTS BETWEEN DISSIMILAR MATERIALS TO FORM A COMPLETELY WEATHER-TIGHT SEAL. SEALANT LOCATIONS INDICATED BY ARE NOT LIMITED TO LIGHT FIXTURE MOUNTS, DOOR AND WINDOW FRAMES, TRUCKA CORIES, TUNNAGE, VENTILATION PENETRATIONS, SLOPPERS, ELECTRICAL, OUTLETS, ROSE IRON, AND UTILITY SERVICE ENTRANCES.
2. INSTALL TYPE 1 COMMERCIAL GRADE BUILDING WRAP OVER EXTERIOR METAL SIDING AND BREAK METAL. METAL FLASH APPLIED HEATER BARRES, BEAMS, DRAINABLE EPS, METAL TILE MANUFACTURER APPROVED HEATER BARRES BEHIND EXTERIOR GRANITE TILE APPROVED AS INSTALLED. METAL 300 FLASH APPLIED AIR AND MOISTURE BARRIERS BEHIND ALL EXTERIOR FINISHES.
3. EXTERIOR SCHEDULES AND FINISHES ARE SHOWN FOR DESIGN INTENT ONLY. GC SHALL BE RESPONSIBLE FOR COORDINATING SCOPE OF WORK WITH OWNER'S REPRESENTATIVE AND/OR CIVIL DRAWINGS.
4. BRACKETS SHALL BE 2" MIN. BELOW FLOOR SLAB AND WALL SLOPE AWAY FROM BUILDING.
5. ITEMS MOUNTED ON TOP OF THE FINISH ARE TO BE SET IN A FULL BED OF SEALANT AND HAVE FULL DEPTH BLOTTING IMMEDIATELY BELOW CAP.
6. SEE STRUCTURAL PLAN AND DETAILS FOR ADDITIONAL FINISH REQUIREMENTS.



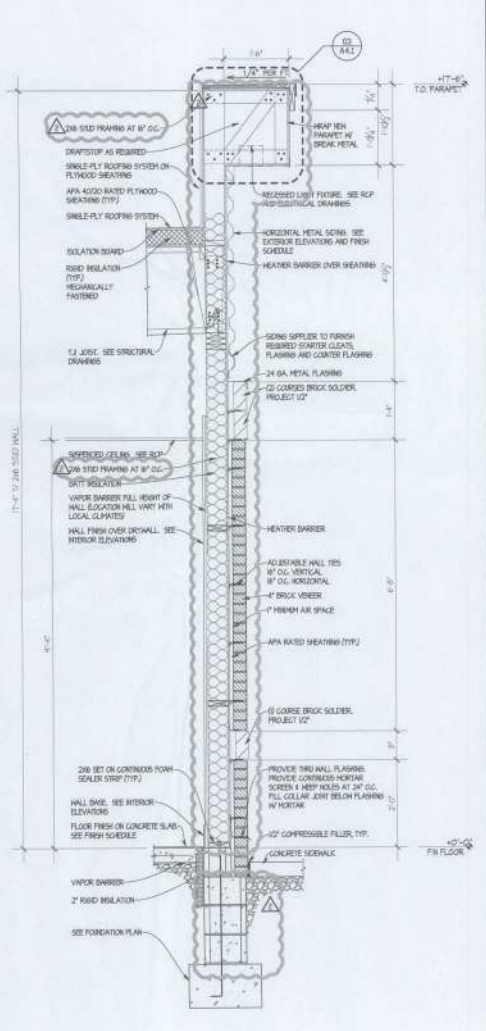
04 WALL SECTION
SCALE: 1/4" = 1'-0"



03 WALL SECTION
SCALE: 1/4" = 1'-0"



02 WALL SECTION
SCALE: 1/4" = 1'-0"



01 WALL SECTION
SCALE: 1/4" = 1'-0"

SITE NUMBER:	11945
BASE MODEL:	0300
ASSET TYPE:	FRANCHISE
CLASSIFICATION:	NEW
OWNER:	WEN-ONE OF FLORIDA, INC.
BASE VERSION:	2014 JUL 03 02
UPDATE CLASSIFICATION:	FRAN NEW BASE
PROJECT YEAR:	2014
FURNITURE PACKAGE:	2014
DESIGN BULLETINS:	THRU 08 01

PROJECT TYPE: **E2000 NEW**

Wendy's

REV. NO.	DESCRIPTION
01/03/14	PROGRESS

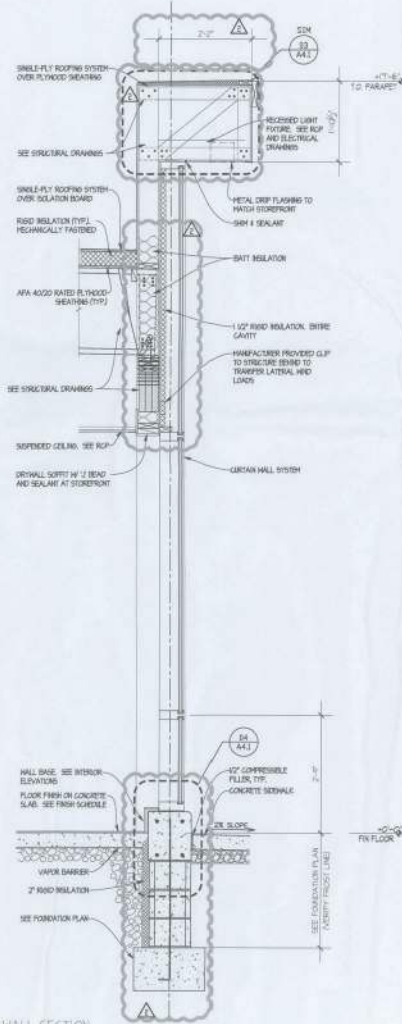
REV. NO.	DESCRIPTION
01/03/14	PROGRESS

REV. NO.	DESCRIPTION
01/03/14	PROGRESS

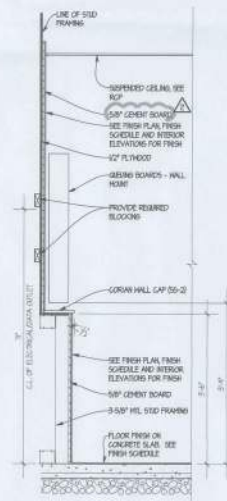
A3.3

GENERAL NOTES

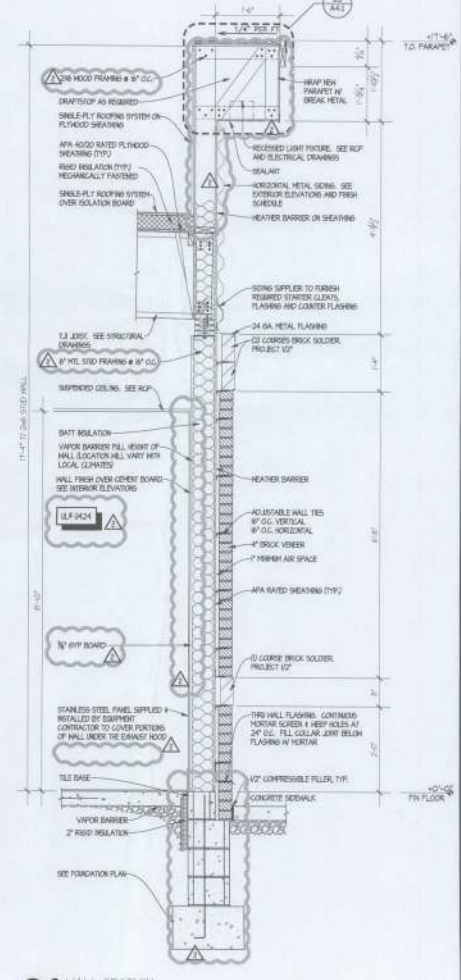
1. SEAL EXTERIOR WALL AND ROOF PENETRATIONS AND JOINTS BETWEEN DISJUNCT MATERIALS TO ENSURE A COMPLETELY WEATHER-TIGHT SEAL. SEALANT LOCATIONS INCLUDE BUT ARE NOT LIMITED TO: LIGHT FIXTURE RECESSES, DOOR AND WINDOW FRAMES, FLASHING DETAILS, SIGNAGE POINTS, CONDUIT PENETRATIONS, SCUPPERS, ELECTRICAL, GALLEYS, VENTS, AND UTILITY SERVICE ENTRANCES.
2. INSTALL TYPE 15 OVERLAPPING GRADE BUILDING WRAP BEHIND EXTERIOR METAL SIDING AND BREAK METAL. INSTALL FLUID APPLIED HEATHER BARRIER BEHIND DRAINABLE TYPE INSULATION. TIE HANGERS APPROX 1" BEHIND HEATHER BARRIER BEHIND EXTERIOR GRAVING. TILE APPROVED ALTERNATE. INSTALL TO FLUSH APPLIED AIR AND HEATHER BARRIER BEHIND ALL EXTERIOR FINISHES.
3. EXTERIOR SCHEDULES AND FINISHES ARE SHOWN FOR DESIGN WHEN ONLY G.C. SHALL BE RESPONSIBLE FOR COORDINATING SCOPE OF WORK WITH OWNER'S REPRESENTATIVE AND/OR CIVIL DRAWINGS.
4. GRADES SHALL BE 2" MIN. BELOW FLOOR SLAB AND SHALL SLOPE AWAY FROM BUILDING.
5. ITEMS MENTIONED ON TOP OF THE DRAWING ARE TO BE SET IN A FULL BED OF SEALANT AND HAVE FULL DEPTH BEHIND IMMEDIATELY BELOW G.C.
6. SEE STRUCTURAL PLAN AND DETAILS FOR ADDITIONAL FINISHING REQUIREMENTS.



03 WALL SECTION
SCALE: 3/4" = 1'-0"



02 WALL SECTION
SCALE: 3/4" = 1'-0"



01 WALL SECTION
SCALE: 3/4" = 1'-0"

SITE NUMBER:	11540
BASE MODEL:	E2000
ASSET TYPE:	FRANCHISEE
CLASSIFICATION:	NEW
OWNER:	WEN-ONE OF FLORIDA, INC.
BASE VERSION:	2014 JUL 03 R2
UPDATE CLASSIFICATION:	
FRAN NEW BASE:	
PROJECT YEAR:	2014
FURNITURE PACKAGE:	2014
DESIGN BULLETINS:	THRU 05 01

PROJECT TYPE: **E2000**
NEW

Wendy's

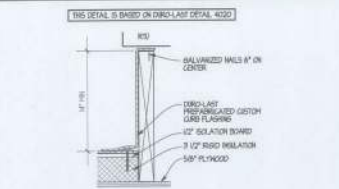
REV.	DATE	DESCRIPTION
07	03/14	PROGRESS

DATE PLOTTED:	OCTOBER 22, 2014
PROJECT NUMBER:	1412
DRAWN BY:	KP
CHECKED BY:	DK

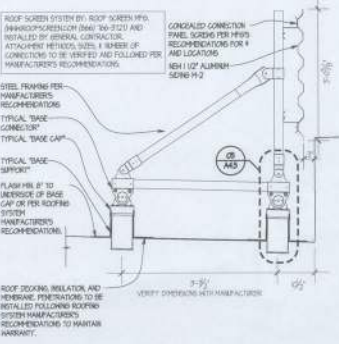


DATE PLOTTED:
WALL SECTIONS

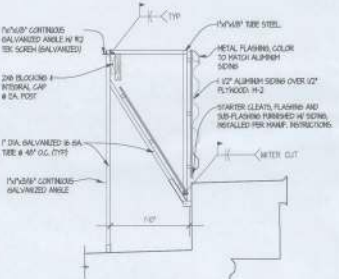
SHEET NUMBER:
A3.4



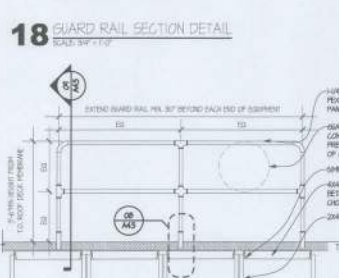
20 RTU CURB DETAIL
SCALE: 1/4" = 1'-0"



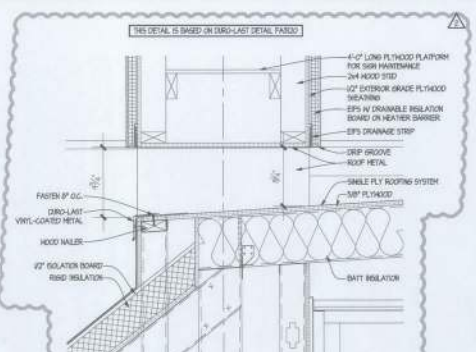
19 GUARD RAIL SECTION DETAIL
SCALE: 3/4" = 1'-0"



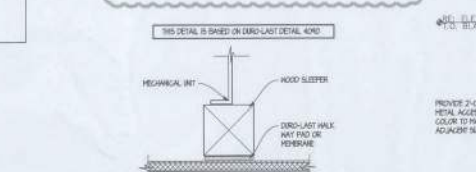
18 GUARD RAIL SECTION DETAIL
SCALE: 3/4" = 1'-0"



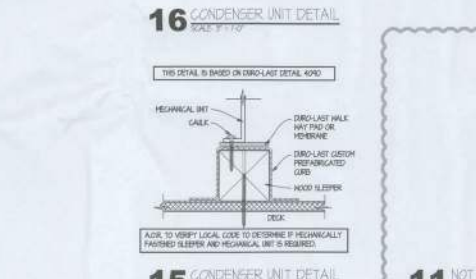
17 GUARD RAIL SECTION DETAIL
SCALE: 3/4" = 1'-0"



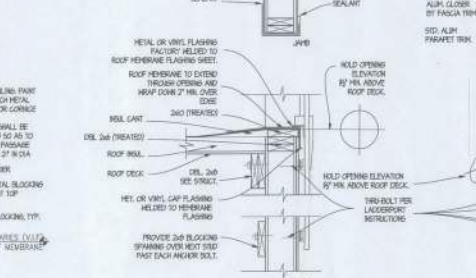
21 THRU-WALL SCUPPER AT BLADE
SCALE: 1/4" = 1'-0"



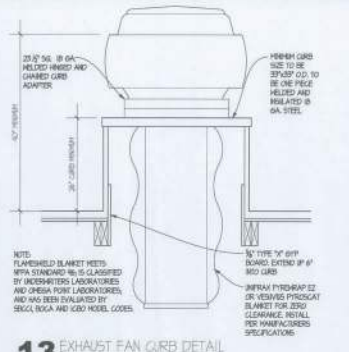
16 CONDENSER UNIT DETAIL
SCALE: 1/4" = 1'-0"



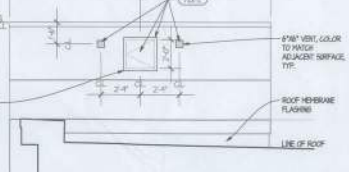
15 CONDENSER UNIT DETAIL
SCALE: 1/4" = 1'-0"



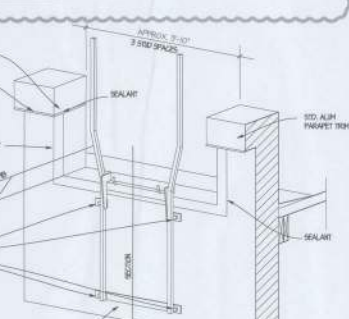
14 LADDER RECEIVER
SCALE: 3/4" = 1'-0"



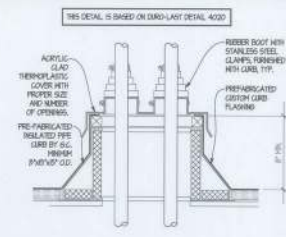
13 EXHAUST FAN CURB DETAIL
SCALE: 3/4" = 1'-0"



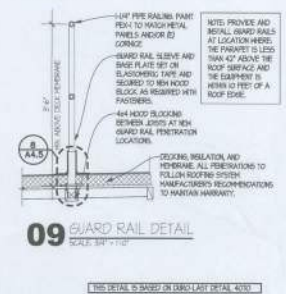
12 BLADE WALL DETAIL
SCALE: 1/4" = 1'-0"



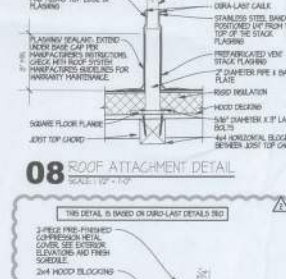
10 CONDENSER PIPE DETAIL
SCALE: 1/4" = 1'-0"



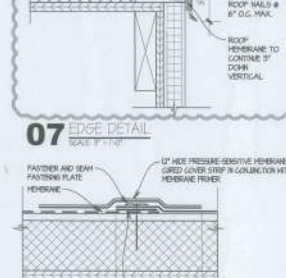
09 GUARD RAIL DETAIL
SCALE: 3/4" = 1'-0"



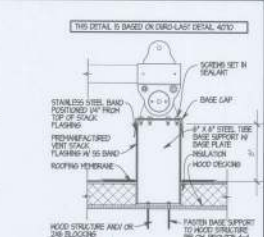
08 ROOF ATTACHMENT DETAIL
SCALE: 1/4" = 1'-0"



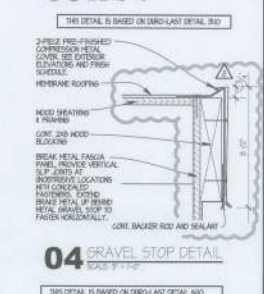
07 EDGE DETAIL
SCALE: 1/4" = 1'-0"



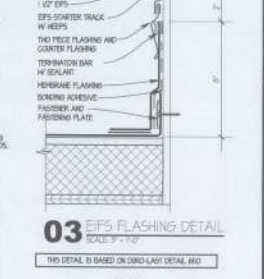
06 ROOF SEAM DETAIL
SCALE: 1/4" = 1'-0"



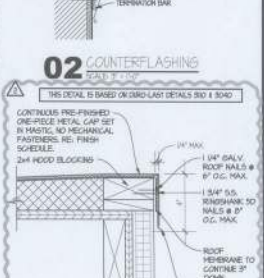
05 ROOF ATTACHMENT DETAIL
SCALE: 1/4" = 1'-0"



04 GRAVEL STOP DETAIL
SCALE: 1/4" = 1'-0"



03 EIFS FLASHING DETAIL
SCALE: 1/4" = 1'-0"



02 COUNTERFLASHING
SCALE: 1/4" = 1'-0"

SITE NUMBER	11349
BASE MODEL	E2000
ASSET TYPE	FRANCHISE
CLASSIFICATION	NEW
OWNER	WEN-ONE OF FLORIDA, INC.
BASE VERSION	2014 JUL 03 R2
UPGRADE CLASSIFICATION	
FRAN NEW BASE	
PROJECT YEAR	2014
FURNITURE PACKAGE	2014
DESIGN BULLETIN	TRU01 DB 01

PROJECT TYPE: **E2000 NEW**

Wendy's

REV.	DATE	DESCRIPTION
1	07/03/14	PROGRESS
2		
3		
4		
5		
6		
7		
8		
9		
10		
11		
12		
13		
14		
15		
16		
17		
18		
19		
20		
21		
22		
23		
24		
25		
26		
27		
28		
29		
30		
31		
32		
33		
34		
35		
36		
37		
38		
39		
40		
41		
42		
43		
44		
45		
46		
47		
48		
49		
50		
51		
52		
53		
54		
55		
56		
57		
58		
59		
60		
61		
62		
63		
64		
65		
66		
67		
68		
69		
70		
71		
72		
73		
74		
75		
76		
77		
78		
79		
80		
81		
82		
83		
84		
85		
86		
87		
88		
89		
90		
91		
92		
93		
94		
95		
96		
97		
98		
99		
100		

DATE: 10/22/2014
 PROJECT NUMBER: 1412
 DRAWN BY: JGP
 CHECKED BY: DJE

A4.5

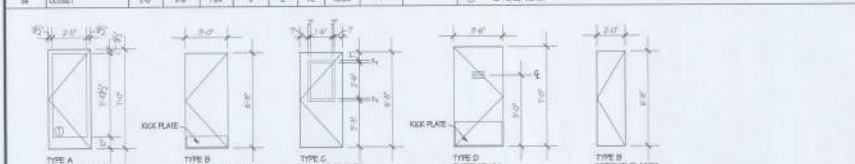
APPROVED SUPPLIER LIST

PRODUCT	CONTACT INFORMATION	PRODUCT	CONTACT INFORMATION	PRODUCT	CONTACT INFORMATION	PRODUCT	CONTACT INFORMATION		
DIVISION 3 - CONCRETE		DIVISION 8 - DOORS AND WINDOWS		DIVISION 9 - FINISHES (CONTINUED)		DIVISION 10 - SPECIALTIES (CONTINUED)			
PRE-TINTED CONCRETE	CHEMMASTERS MADISON, OHIO 800-486-7888 ATTN: CLAUDIA BENTLEY	DOORS AND HARDWARE	***BASIS OF DESIGN*** LA FORCE, INC. COLUMBUS, OH 1-800-792-7301 ATTN: DAVE CARIDAS	LUXURY VINYL TILE (WC-2)	DAVIS FLOORS 1-888-338-1029 ATTN: KERRY BISHOP	RESTROOM PARTITIONS AND ACCESSORIES	***BASIS OF DESIGN*** LA FORCE, INC. COLUMBUS, OH 1-800-792-7301 ATTN: DAVE CARIDAS		
DIVISION 4 - MASONRY AND STONE									
FACE BRICK	BOWERSTON SHALE COMPANY 740-259-2921 ATTN: CUSTOMER SERVICE		HAMILTON PARKER COLUMBUS, OHIO 614-358-7909 ATTN: JIM CAMPBELL	WALLCOVERINGS (WC-3) CORNER GUARDS	KROSEAL KORNGUARD CINCINNATI, OH 866-629-2290 ATTN: MICHAEL GROSS		***BASIS OF DESIGN*** PREFERRED EQUIPMENT (AON) DARTON, OH 877-635-4666, 937-432-6099 ATTN: MELISSA NEU		
	HAMILTON PARKER (OHIO) 614-358-7800 ATTN: STEVE WATTERS	STOREFRONT AND CURTAIN WALL	***BASIS OF DESIGN*** UD ALUMINUM 213-209-3629 (CELL) ATTN: BRAD THURMAN (DIRECTOR OF SALES & MARKETING)	WALLCOVERINGS (WC-4)	(SEE "ART PACK ELEMENTS" BELOW)		TRANE AIR CONDITIONING COLUMBUS, OH 866-986-4822 ATTN: MARY CUBICK		
MANUFACTURED STONE	DUTCH QUALITY STONE MT. EATON, OHIO 335-401-2115 ATTN: WENDALL MAST		KAWNEER COMPANY, INC. FRANKLIN, INDIANA 317-771-9263 ATTN: CHERYL WILKERSON	SOLID SURFACE SILLS (SS-2, SS-3)	OHIO VALLEY SUPPLY CINCINNATI, OHIO 514-975-6700 ATTN: DAVE GREENING		LENNOX INDUSTRIES INC. DALLAS, TX 800-367-6285 ATTN: ERIC LAWSON		
	OWENS CORNING MASONRY PRODUCTS MEDINA, OHIO 888-315-3261 ATTN: KATHY MANNON (FOR NEAREST DISTRIBUTOR)		TUBELITE WALKER, MICHIGAN 616-806-2529 ATTN: BRIAN MCGINNIS	DIVISION 10 - SPECIALTIES		WINDOW SHADES	INSIDE OUTFITTERS COLUMBUS, OHIO 800-742-3372, 614-798-3500 ATTN: STEVE JASZEK	EXHAUST HOODS	AEROLATOR SYSTEMS INC. MONROE, NC 888-641-0318 ATTN: STEVEN LUDDY
DIVISION 5 - METALS			OLDCASTLE BUILDING ENVELOPE TERRELL, TEXAS 865-293-4082 ATTN: MARK LEHMAN	CANOPY (PW & ORDER)	***BASIS OF DESIGN*** GLOBAL AWNING MONROE, LOUISIANA 318-589-4266 ATTN: FRED MURPHY		ROLL-A-SHADE LAKE ELSINORE, CA 951-245-6077 x113 ATTN: RIC BERG (VP OF BUSINESS DEVELOPMENT)		ACTION AIR (VENTMASTER) ALPHARETTA, GA 866-644-1896 ATTN: BRENT COX
DUMPSTER GATES AND HARDWARE	FORTIN WELDING COLUMBUS, OHIO 614-291-4342 ATTN: DAN FORTIN			EXTERIOR MENUBOARD EXTERIOR PRE-SALE BOARDS INTERIOR QUEING BOARDS (STATIC)	UNI-STRUCTURES, INC. KENNESAW, GEORGIA 678-974-1753 ATTN: KRISTINE WATTS		FRONT LINE SALES 630-226-5309 ATTN: TIM HAYES	AIR CURTAINS (ABOVE PW, AS REQUIRED BY CODE)	BERNER INTERNATIONAL CORP NEW CASTLE, PA 724-558-3051 ATTN: KAREN RYDER
DIVISION 6 - WOOD, PLASTICS AND COMPOSITES		GLAZING	***BASIS OF DESIGN*** GUARDIAN GLASS INDIANAPOLIS, IN 786-494-6964 ATTN: DALE HAUSER (ARCH SALES MGR)	INTERIOR MENUBOARD (STATIC)	***BASIS OF DESIGN*** CS LIGHTING SYSTEMS LOS ANGELES, CA 800-734-9961 x108 ATTN: MIKE MCGINNIS	KITCHEN EQUIPMENT (KES)	N. WASSERSTROM AND SONS COLUMBUS, OHIO 800-444-4897 x8869 ATTN: ADAM CALTRIDER		QUICKSERV HOUSTON, TX 800-388-8307 ATTN: Jackie Brady
ROOF JOIST, MICRO-LAM BEAMS	REDBULT COLUMBUS, OHIO 877-371-0445 ATTN: HENRY GRUESSEN	PICK-UP WINDOW (PUW)	***BASIS OF DESIGN*** QUICKSERV (STANDARD PUW & IMPACT RATED) HOUSTON, TX 800-388-8307, 713-482-1936 ATTN: STEVE BERT (NATIONAL SALES MGR)	NATIONAL SIGN SYSTEMS COLUMBUS, OHIO 800-544-6726 ATTN: CUSTOMER SERVICE	NATIONAL SIGN SYSTEMS COLUMBUS, OHIO 800-544-6726 ATTN: CUSTOMER SERVICE		S & G DISTRIBUTING HILLIARD, OH 888-529-1992 x3635 ATTN: JOE URASKI, JR		
	NATIONAL BUILDING SYSTEMS SUGAR GROVE, OHIO 937-291-2950 ATTN: KEN DUVAL		EASI-SERV (STANDARD PUW ONLY) VANCOUVER, BC 604-422-8611 ATTN: FELIPE MONTIEL				AEI AYDELOTT EQUIPMENT INC. CENTERVILLE, OHIO 888-293-3568, 937-435-8226 ATTN: HERB AYDELOTT		
MILLWORK	S & G DISTRIBUTING HILLIARD, OH 888-529-1992 x3635 ATTN: JOE URASKI, JR								
	N. WASSERSTROM AND SONS COLUMBUS, OHIO 800-444-4897 x8869 ATTN: ADAM CALTRIDER								
	AEI AYDELOTT EQUIPMENT INC. CENTERVILLE, OHIO 888-293-3568, 937-435-8226 ATTN: HERB AYDELOTT								
DIVISION 7 - THERMAL AND MOISTURE PROTECTION		DIVISION 9 - FINISHES		DIVISION 12 - FURNISHINGS		DIVISION 13 - SPECIAL CONSTRUCTION		DIVISION 24 - ELECTRICAL SYSTEMS	
ROOFING PRODUCTS	***BASIS OF DESIGN*** DURIGLAD ROOFING, INC. SAGINAW, MICHIGAN 800-248-0286 ATTN: JASON DARK	SUSPENDED ACOUSTICAL CEILING (CT-1, CT-2, CT-3, CT-4)	CERTAINTED (FORMERLY BBR CELOTEX) 800-346-9782 x2263 ATTN: CHRISTINA HOPEWELL	INTERIOR MENUBOARD (DIGITAL) INTERIOR QUEING BOARDS (DIGITAL) TELEVISIONS	THE WENDY'S COMPANY, IT DEPARTMENT	DINING ROOM FURNITURE (SEE "KITCHEN EQUIPMENT" ABOVE)		ELECTRICAL DISTRIBUTION PANELS	***BASIS OF DESIGN*** WESCO (W/ CONTROLS) COLUMBUS, OH 800-417-7443, 614-875-8822 ATTN: WENDY'S PROJECT TEAM
	SARNAPL ROOFING SYSTEMS CANTON, MASSACHUSETTS 608-270-0053 ATTN: BEN BIEDRZYCKI	FRP PANELING	MARLITE PRODUCTS DOVER, OHIO 800-377-1221, 330-343-6621 ATTN: CUSTOMER SERVICE/TJ RINE	EXTERIOR SIGNAGE (INCLUDING EXTERIOR BRANDING MOMENT)	CUSTOM SIGN CENTER COLUMBUS, OHIO 800-522-2934 ATTN: MICHAEL ANDERSON	PATIO FURNITURE	***BASIS OF DESIGN*** RECYCLE DESIGN ANDERSON, IN 765-374-0316 ATTN: JOSH BOUTWELL	LIGHTING	***BASIS OF DESIGN*** CAPITAL LIGHTING COLUMBUS, OH 877-841-2000, 614-841-1200 ATTN: BOB BEATTIE
EFS	***BASIS OF DESIGN*** 310 CORP ATLANTA, GA 407-488-8371 ATTN: TIM BALLEW (STRATEGIC ACCOUNTS MANAGER)	LAMINATE (L-1-L2)	WILSONART 254-718-7907 ATTN: JOHN HILL, hills@wilsonart.com		EVERBRITE GREENFIELD, WI 414-786-5470 ATTN: STEVE GLASENAPP	WALK-IN COOLER / FREEZER / DRY STORAGE	***BASIS OF DESIGN*** INTERNATIONAL COLD STORAGE WICHITA, KS 316-230-8888 ATTN: MARK NORVOLD		LOUISVILLE LIGHTING LOUISVILLE, KY 800-678-1532 ATTN: ROBERT LARSON
	DRYVIT SYSTEMS, INC. WARREN, RI 734-275-0044 ATTN: ROBERT DAZEL (MARKETING MGR)	PAINT (PEX-1, PEX-2, PEX-4, PEX-6, PEX-8, PEX-9, PEX-8, PT-1, PT-2, PT-3)	AVAILABLE THRU LOCAL RETAIL LOCATIONS; CONTACT NATIONAL ACCOUNT REPS BELOW FOR TECHNICAL QUESTIONS ONLY.		NATIONAL SIGN SYSTEMS COLUMBUS, OHIO 800-544-6726 ATTN: CUSTOMER SERVICE		KOLPAK PARSONS, TN 1-800-626-7036 x5623 ATTN: TABITHA KING		LSI INDUSTRIES (SITE LIGHTING ONLY) CINCINNATI, OH 800-436-7800, 513-793-3200 ATTN: GAIL HOPKINS
ACM PANEL FABRICATOR	CLADDING & COMPONENT SOLUTIONS CUMMING, GA 770-867-2777 ATTN: STEPHEN ROEGGE		BENJAMIN MOORE & COMPANY CLEVELAND, OHIO 330-393-3860 ATTN: DOROTHY HAZINSKI (NATIONAL ACCOUNT MANAGER)	ART PACK ELEMENTS AND WAYFINDING	GTG COLUMBUS, OHIO 614-252-6342 ATTN: APRIL ANDRICK	WATER HEATER	RHEIM RUIJO MONTGOMERY, AL 800-330-4935 ATTN: PAT POWELL (NATIONAL ACCOUNTS MGR)	PARKING BLOCKS, BOLLARD COVERS	***BASIS OF DESIGN*** PAWLING CORPORATION WASSIC, NY 866-671-3436 x3345 ATTN: MARCELLA FARRELL
	LSI GRAPHICS SOLUTIONS HOUSTON, TX 713-7404-8838 ATTN: ANDREW HAREY		MDC WALLCOVERING ELK GROVE VILLAGE, IL 800-621-4006 x8338 ATTN: JAN PREWITT	LADDER RECEIVER	LADDERTECH, LLC BRIGHTON, MICHIGAN 800-770-8861 ATTN: MICHELE ORAS OR CUSTOMER SERVICE	LAVATORY PACKAGE (QUANTITY MOUNTING BRACKETS, AND BOWL)	AD SMITH ALPHARETTA, GA 800-447-1953 (OPT #1) ATTN: NATAL ACCT.		OTHER VENDORS
CORRUGATED METAL	ALCOA BUILDING & CONSTRUCTION SYSTEMS MADON, GEORGIA 478-319-0158 ATTN: KEVIN R. JUDEMAN (RETAIL PROGRAM MANAGER)		***BASIS OF DESIGN*** (FOR STOREFRONT REFINISHING) PPG INDUSTRIES 317-319-5900 cell ATTN: RICH GANGLI (BUSINESS DEVELOPMENT MGR)	FIREPLACE	MODERN FLAMES PHOENIX, AZ 877-346-8383 ATTN: TOM FOY	PLUMBING FIXTURES (WC AND URINALS)	GC SUPPLIED	FREESTYLE MACHINE	COKE 404-678-7952 ATTN: STEVE MULDOWNY
PREMANUFACTURED FASCIA AND SOFFITS	CLADDING & COMPONENT SOLUTIONS CUMMING, GA 770-867-2777 ATTN: STEPHEN ROEGGE	SIGN PAINT (PEX-3)	(SEE SIGN VENDORS BELOW)			FAUCETS	MOEN INC. CLEVELAND, OH 800-521-8809 ATTN: CUSTOMER SERVICE		
		TILE (FT-1, B-1, B-2, WT-1)	CROSSVILLE CERAMICS CROSSVILLE, TENNESSEE 631-456-3997 ATTN: TONI HALE				AMERICAN STANDARD 800-442-1902		
		TILE (FT-2, WT-2)	TRANSCERAMICA TILE CROSSVILLE, TN 312-505-2859 ATTN: JAN WERNER				SLOAN VALVE COMPANY CHIO, 313-681-9999 ATTN: JIM NOLAN OUTSIDE OHIO: 800-982-9839		
		WALLCOVERINGS (WC-1, WC-5)	MDC WALLCOVERING ELK GROVE VILLAGE, IL 800-621-4006 x8338 ATTN: JAN PREWITT						

DOOR SCHEDULE

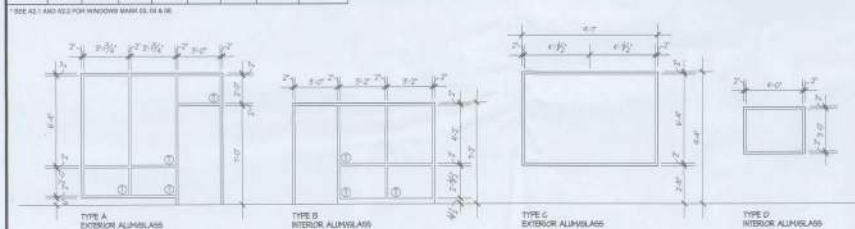
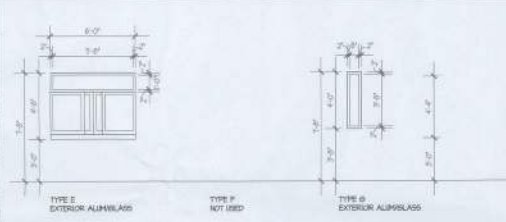
DOOR MARK	ROOM	SIZE			HOW GROUP	TYPE	MATERIAL	FRAME	SAFETY GLASS	REMARKS
		WD	HGT	THK						
01	ENTRY #1	2'-0"	7'-0"	1-3/4"	1	A	ALUM	ALUM	YES	NOTE 1
02	VESTIBULE	2'-0"	7'-0"	1-3/4"	2	A	ALUM	ALUM	YES	NOTE 1
03	ENTRY #2	2'-0"	7'-0"	1-3/4"	1	A	ALUM	ALUM	YES	NOTE 1
04	MEAN SERVICE DOOR	2'-0"	7'-0"	1-3/4"	3	D	HR	HR	NO	NOTE 2
05	MEANS	2'-0"	7'-0"	1-3/4"	5	B	PL	ALUM	NO	NOTE 1,2,3
06	MEANS	2'-0"	7'-0"	1-3/4"	4	B	PL	ALUM	NO	NOTE 1,2,3
07	OFFICE	2'-0"	7'-0"	1-3/4"	4	C	PL	ALUM	NO	
08	CLUBSET	2'-0"	7'-0"	1-3/4"	5	E	PL	ALUM	NO	

DOOR & WINDOW SCHEDULE NOTES
 1. UNLESS SHOWN OTHERWISE, ALL DOOR AND WINDOW FRAMES SHALL BE 1-3/4" ALUMINUM OR STEEL.
 2. UNLESS SHOWN OTHERWISE, ALL DOOR AND WINDOW GLASS SHALL BE 1/2" CLEAR GLASS.
 3. UNLESS SHOWN OTHERWISE, ALL DOOR AND WINDOW GLASS SHALL BE 1/2" CLEAR GLASS.
 4. UNLESS SHOWN OTHERWISE, ALL DOOR AND WINDOW GLASS SHALL BE 1/2" CLEAR GLASS.



WINDOW SCHEDULE

WINDOW MARK	ROOM	SIZE			GLAZING	FRAME	MATERIAL	SAFETY GLASS	REMARKS
		WD	HGT	THK					
01	ENTRY #1	2'-0"	7'-0"	1-3/4"	1	A	ALUM	YES	
02	VESTIBULE	2'-0"	7'-0"	1-3/4"	2	A	ALUM	YES	
03	ENTRY #2	2'-0"	7'-0"	1-3/4"	1	A	ALUM	YES	
04	MEAN SERVICE DOOR	2'-0"	7'-0"	1-3/4"	3	D	HR	NO	
05	MEANS	2'-0"	7'-0"	1-3/4"	5	B	PL	ALUM	
06	MEANS	2'-0"	7'-0"	1-3/4"	4	B	PL	ALUM	
07	OFFICE	2'-0"	7'-0"	1-3/4"	4	C	PL	ALUM	
08	CLUBSET	2'-0"	7'-0"	1-3/4"	5	E	PL	ALUM	



DOOR HARDWARE SCHEDULE

QTY.	DESCRIPTION	MODEL	FINISH	MFR.	QTY.	DESCRIPTION	MODEL	FINISH	MFR.
1	ENTRANCE STOREROOM ENTRANCE				1	OFFICE DOOR			
1	SA. HINGES	881279 4 1/2" x 1 1/2"	UNFIN	HAGER	1	SA. HINGES	881279 4 1/2" x 1 1/2"	UNFIN	HAGER
1	SA. PUSH/BLOCK	1768A-BGP	SP13	FALCON	1	SA. OFFICE LOCKSET	881100	BRN	FALCON
1	SA. PULL	87119	ROCKWOOD	1	SA. WALL STOP	488	UNFIN	ROCKWOOD	1
1	SA. PULL (HOT CLIMATE)	88658	NO	WEPPLA	1	SA. LOCKSET	881279 4 1/2" x 1 1/2"	UNFIN	HAGER
1	SA. GLOBE	8275-16	WENE	FALCON	1	SA. HINGES	881279 4 1/2" x 1 1/2"	UNFIN	HAGER
1	SA. FLOOR STOP	428	WITBREM	ROCKWOOD	1	SA. STURDIBOON LOCKING	88852	BRN	FALCON
1	SA. THRESHOLD	290	290	NOP	1	SA. KICKPLATE	4128 28 X 2" LESS DOOR WIDTH	UNFIN	ROCKWOOD
1	SA. DOOR BEEP	288	288	NOP	1	SA. WALL STOP	488	UNFIN	ROCKWOOD
1	SA. INTERIOR STOREROOM ENTRANCE				1	RESTROOM DOOR			
1	SA. HINGES	881279 4 1/2" x 1 1/2"	UNFIN	HAGER	3	SA. HINGES	881279 4 1/2" x 1 1/2"	UNFIN	HAGER
1	SA. PUSH/BLOCK	11547	3147E	ROCKWOOD	1	SA. PULL PLATE	706	UNFIN	ROCKWOOD
1	SA. GLOBE	8275-16	WENE	FALCON	1	SA. PULL PLATE	3715 X 708	UNFIN	ROCKWOOD
1	SA. FLOOR STOP	428	WITBREM	ROCKWOOD	1	SA. LOCKSET	881279-16	NO	FALCON
1	SA. MEAN SERVICE DOOR	4128 28 X 2" LESS DOOR WIDTH	UNFIN	ROCKWOOD	1	SA. KICKPLATE	4128 28 X 2" LESS DOOR WIDTH	UNFIN	ROCKWOOD
1	SA. CONTRAFLOR HINGE	31340	BR	RECTI	1	SA. WALL STOP	488	UNFIN	ROCKWOOD
1	SA. BAY	2043	SA	FALCON	1	RESTROOM DOOR HINGE (4 USES)			
1	SA. GLOBE	8275-16	WENE	FALCON	3	SA. HINGES	881279 4 1/2" x 1 1/2"	UNFIN	HAGER
1	SA. KICKPLATE	4128 28 X 2" LESS DOOR WIDTH	UNFIN	ROCKWOOD	1	SA. KICKPLATE	4128 28 X 2" LESS DOOR WIDTH	UNFIN	ROCKWOOD
1	SA. GASKET	88503	---	NEP	3	SA. PRIVACY LOCKSET	88503	BRN	FALCON
1	SA. BEEP	2084	AL	NEP	1	SA. GLOBE	8275-16	NO	FALCON
1	SA. SECURITY ASTRAVAL	17839P 8" 1/8"	AL	NEP	1	SA. KICKPLATE	4128 28 X 2" LESS DOOR WIDTH	UNFIN	ROCKWOOD
1	SA. LOCK LIFT	17839P 8" 1/8"	AL	NEP	1	SA. WALL STOP	488	UNFIN	ROCKWOOD
1	SA. FLOOR STOP	428	WITBREM	ROCKWOOD					
1	SA. THRESHOLD	290	290	NOP					
1	SA. DRIP CAP	384	---	NEP					

RESTROOM FIXTURE AND HARDWARE SCHEDULE

QTY.	DESCRIPTION	MODEL	FINISH	MFR.
1	RESTROOM FIXTURE			
1	HARDWARE			

PAINT SCHEDULE

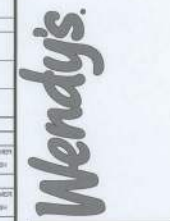
COLOR/BASE	SHEEN	SHERWIN-WILLIAMS	BENJAMIN MOORE	PPG	MDC: www.mdcwall.com
EXTERIOR					
DOOR					
WALL					
CEILING					
TRIM					
ROOF					
INTERIOR					
DOOR					
WALL					
CEILING					
TRIM					
ROOF					

TILE INSTALLATION SCHEDULE

LOCATION	TILE (1)	TILE SIZE	MORTAR (2)	GROUT (1,2)	JOINT	MEMBRANE (2)	REMARKS
EXTERIOR WALLS	1-1	6" x 6"	MR-1	GR-1	1/8"	MR-2	EXTEND MEMBRANE 2" OUT AND 12" UP PERIMETER WALLS. MEMBRANE EXTEND 2" IN.
INTERIOR FLOORS	1-2	6" x 6"	MR-1	GR-2	1/8"	MR-1	EXTEND MEMBRANE 2" OUT AND 12" UP PERIMETER WALLS.
INTERIOR WALLS	1-3	6" x 6"	MR-2	GR-2	1/8"	MR-1	EXTEND MEMBRANE 2" OUT AND 12" UP PERIMETER WALLS. AND UNDER FULL EXTENT OF WOP BAY.
RESTROOMS	1-4	6" x 6"	MR-1	GR-1	1/8"	MR-1	EXTEND MEMBRANE 2" OUT AND 12" UP PERIMETER WALLS.
KITCHEN AREAS	1-5	6" x 6"	MR-1	GR-1	1/8"	MR-1	EXTEND MEMBRANE 2" OUT AND 12" UP PERIMETER WALLS.
MORTAR AND GROUT PRODUCTS			MORTAR (2)	GROUT (1,2)			
			MR-1	GR-1			
			MR-2	GR-2			
			MR-3	GR-3			
			MR-4	GR-4			
			MR-5	GR-5			
			MR-6	GR-6			
			MR-7	GR-7			
			MR-8	GR-8			
			MR-9	GR-9			

SITE NUMBER: 11646
 BASE MODEL: E2000
 CLASSIFICATION: FRANCHISE
 OWNER: WEN-DON OF FLORIDA, INC.
 PROJECT YEAR: 2014 JUL 03 RD
 UPDATE CLASSIFICATION: FROM NEW BASE
 PROJECT YEAR: 2014
 FURNITURE PACKAGE: 0314
 DESIGN BULLETIN: THRU 0611

PROJECT TYPE: E2000 NEW



REV: 001 REVISION

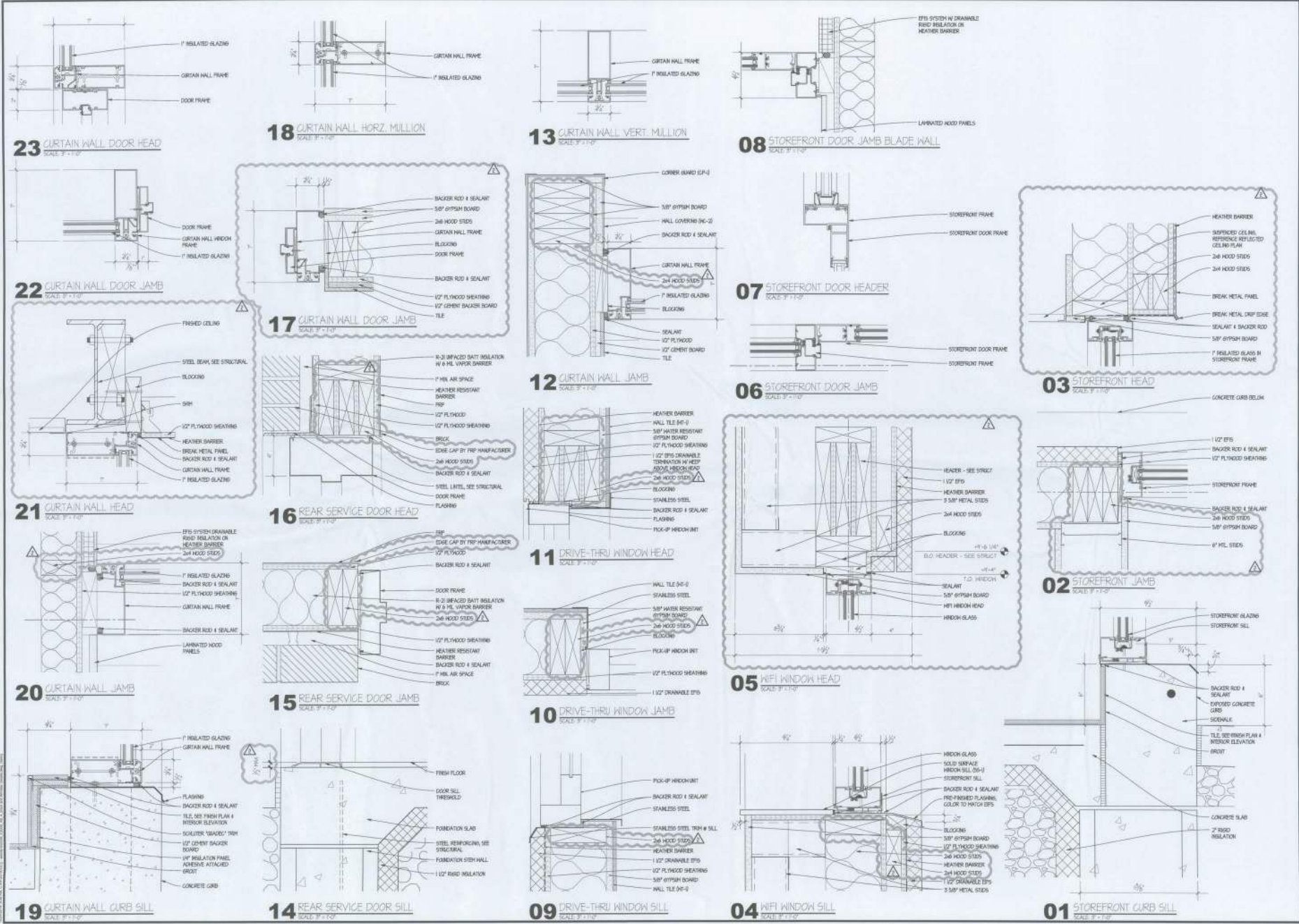
REV: 002/03/14 PROGRESS

DATE: 10/22/2014
 DRAWN BY: 1412
 CHECKED BY: JPD
 APPROVED BY: DK



DOOR WINDOW HARDWARE PAINT AND TILE SCHEDULES

A6.3



SITE NUMBER:	11548
BASE MODEL:	E2000
ASSET TYPE:	FRANCHISEE
CLASSIFICATION:	NEW
OWNER:	WEN-CNE OF FLORIDA, INC.
BASE VERSION:	2014.AA.03.03
UPGRADE CLASSIFICATION:	FRAN NEW BASE
PROJECT YEAR:	2014
FURNITURE PACKAGE:	2014
DESIGN BULLETIN:	THRU 08.01

PROJECT TYPE: **E2000
NEW**

Wendy's

REV.	DATE	DESCRIPTION
▲	07/03/14	PROGRESS
▲		
▲		
▲		



DATE: OCTOBER 22, 2014
PROJECT NUMBER: 1412
DRAWN BY: KJP
CHECKED BY: DK

DOOR AND WINDOW DETAILS

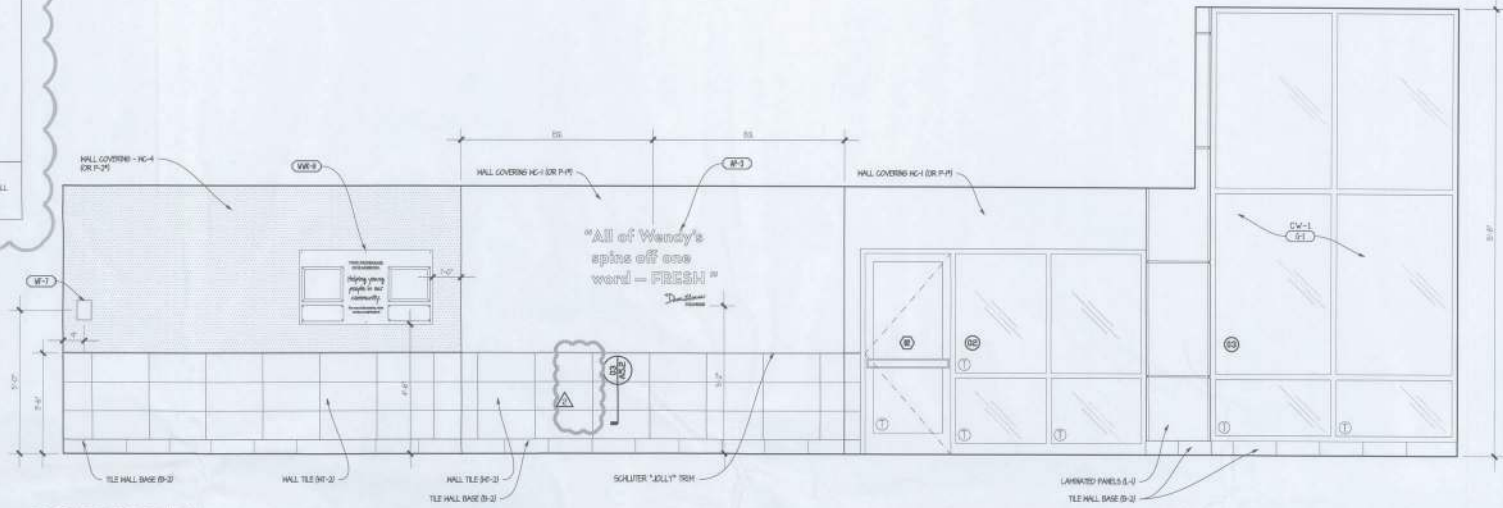
A6.4

ARTPACK & WAYFINDING LEGEND

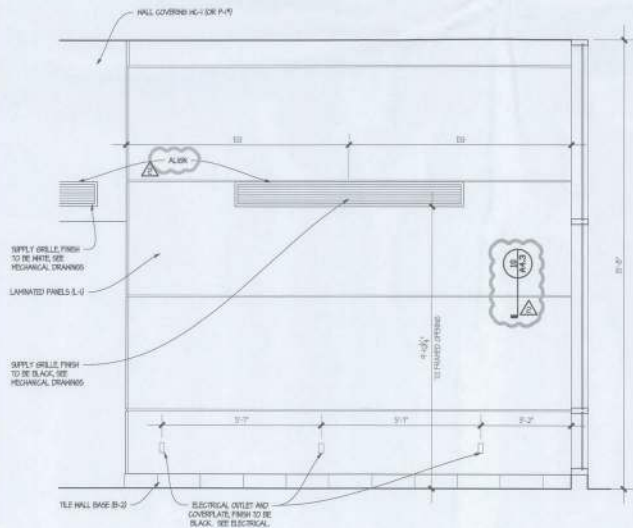
KEY TO PROVIDE AND INSTALL ARTWORK AND WAYFINDING SIGNAGE

- AW-1** EVERY BRAND HOMESET
- AW-2** QUALITY IS OUR RECIPE
- AW-3** DAVE THOMPSON
- AW-4** MEDALLION HENRY'S REAL
- AW-5** QUALITY FOOD-HAVE FRESH IS OUR RECIPE
- W-1** H-FI SIGN
- W-2** NO SMOKING SIGN
- W-3** MEN'S ROOM DOOR SIGN
- W-4** WOMEN'S ROOM DOOR SIGN
- W-5** MEN'S ROOM DOOR SIGN ADA
- W-6** WOMEN'S ROOM DOOR SIGN ADA
- W-7** GREEN REST WASH HANDS
- W-8** RESTROOM (CLEANLINESS)
- W-9** EMPLOYEES ONLY
- W-10** MEN/W - OSHA
- W** NUTRITION POSTER

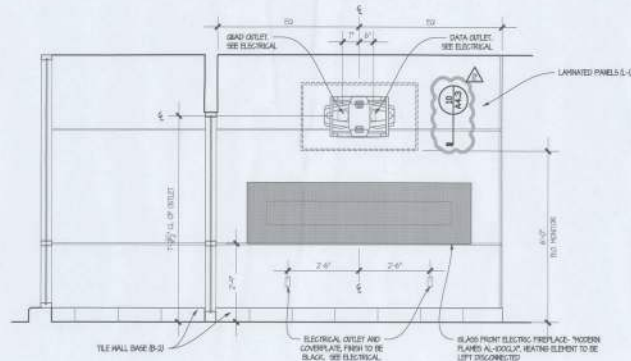
NOTE:
THE CONTRACTOR SHALL PROVIDE AND INSTALL SOLID WOOD BLOCKING FOR ALL WALL MOUNTED ITEMS SIGNAGE EQUIPMENT MILLWORK, ETC. COORDINATE LOCATIONS WITH OTHERS CONTRACTOR REPRESENTATIVE AS NECESSARY.



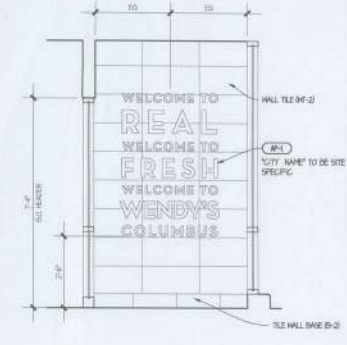
04 INTERIOR ELEVATION
SCALE: 1/2" = 1'-0"



03 INTERIOR ELEVATION
SCALE: 1/2" = 1'-0"



02 INTERIOR ELEVATION
SCALE: 1/2" = 1'-0"



01 INTERIOR ELEVATION
SCALE: 1/2" = 1'-0"

SITE NUMBER:	11543
BASE MODEL:	E2000
ASSET TYPE:	FRANCHISEE
CLASSIFICATION:	NEW
OWNER:	WEN-DY OF FLORIDA, INC.
BASE VERSION:	2014 JUL 03 R2
UPDATE CLASSIFICATION:	FRAN NEW BASE
PROJECT YEAR:	2014
FURNITURE PACKAGE:	2014
DESIGN BULLETIN:	THRU 06 01

PROJECT TYPE: **E2000 NEW**

Wendy's

REV. DATE:	05/03/2014
07/03/14	PROGRESS

REV. DATE:	OCTOBER 22, 2014
PROJECT NUMBER:	1412
DRAWN BY:	XOP
CHECKED BY:	EM



INTERIOR ELEVATIONS
DINING ROOM

A7.1