

*RC Track
Restroom*

The state-approved drawings.

Doug Kelley
Project Manager

T 509-892-3242



Delivering L.B. Foster innovation

606 N. Pines Road, Suite 202
Spokane Valley, WA 99206

NOTES

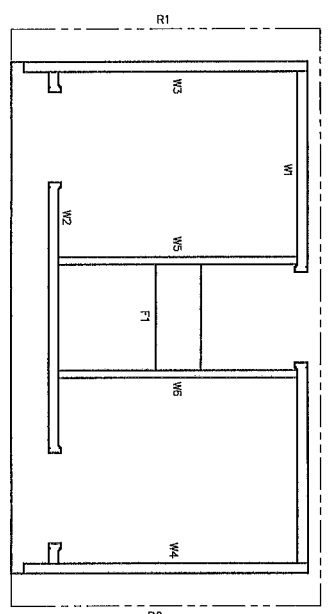
- BUILDING IS DESIGNED TO COMPLY WITH PERTINENT GUIDELINES OF THE AMERICANS WITH DISABILITIES ACT (ADA).
- DESIGN COMPLIES WITH THE PROVISIONS OF THE 2023 FLORIDA BUILDING CODE FOR THE FOLLOWING LOADS:
 ROOF LIVE LOAD = 20 PSF
 ROOF SNOW LOAD = 180 PSF
 FLOOR LIVE LOAD = 400 PSF
 WIND - V = 160 MPH
 WIND EMERGENCY = 125 MPH
 SEISMIC CATEGORY = B
 OCCUPANCY = U
 RISK CATEGORY = II
 CONSTRUCTION TYPE = U-4B (UNREINFORCED)
 OCCUPANT LOAD = 3
 ***BUILDING IS NOT TO BE PLACED IN A LOCATION WHERE LOADS EXCEED THE VALUES PROVIDED ABOVE
 ***BUILDING IS NOT TO BE PLACED IN A HIGH VELOCITY HURRICANE ZONE
- CONCRETE STRENGTH $f'_c = 2500$ PSI MIN. $f'_s = 5000$ PSI
 FIN. AIR ENTRAINMENT 6% ± 1/2% IN PLASTIC CONCRETE
 REINFORCING STEEL: ASTM A615, #3 GRADE 40, #4 AND LARGER GRADE 60 F_y=60 KS MINIMUM LAP 18" AT SPICES, THE BARS WITH DOUBLE LAPPED 16 GA IRON WIRE WELDED WIRE FABRIC (W.W.F.) ASTM A106, GRADE 80, 44x48x7.6MM, F_y=80 KS (OR EQUIVALENT), SMOOTH WIRE, MIN. LAP 2 SQUARES.
- EMBEDDED ITEMS IDENTIFIED ON DRAWINGS (I.E. PS-2, SS, R20) REFER TO CMT STANDARD EMBEDMENT CATALOG.
- BACK OF PANELS TO HAVE SMOOTH TROWEL FINISH UNLESS ALL SURFACES TO BE TEXTURED ARE NOTED ON PANEL DWGS
- REFER TO SEPARATE CMT INCORPORATED SPECIFICATIONS COVERING DESIGN MATERIALS, PRODUCTION, AND INSTALLATION CRITERIA FOR SPECIFIC STYLE OF BUILDING.
- ALL REAR BARS TO HAVE A MINIMUM RADIUS OF 6x THE BAR DIAMETER.
- THIS BUILDING IS NOT DESIGNED FOR PLACEMENT ON THE UPPER HALF OF A HILL OR ESCARPMENT EXCEEDING 10 FEET IN HEIGHT.
- THESE PLANS COMPLY WITH RULE 6100-3.008 (PRODUCT APPROVAL)
- THESE PLANS COMPLY WITH THE LATEST REG. EFFECTIVE DEC 31, 2023.
- THIS BUILDING IS NOT TO BE LOCATED IN A FLOOD HAZARD AREA.
- FOUNDATION DESIGN FOR FLOOD HAZARD AREAS IS PROVIDED ON OTHERS, NOT BY CMT
- FREE SEPARATION DISTANCE TO BE 10 MINIMUM FROM ADJACENT STRUCTURES AND PROPERTY LINES IF FIRE DISTANCE SEPARATION IS LESS THAN 10 FEET SEE FIG. 706.8.1
- INSTALLATION TO MEET APPLICABLE LOCAL, STATE, & FEDERAL CODES, BY OTHERS.
- APPLICABLE PLUMBING FAULTURES MUST BE PROVIDED IN ACCORDANCE WITH THE 2023 FBC SECTION 2902.3 (NOT BY CMT).
- FLORIDA APPROVED PRODUCTS WILL BE INSTALLED PER THE MANUFACTURERS FLORIDA PRODUCT APPROVAL REPORT INSTRUCTIONS.
- THE RAISED (OR ELECTRONIC) SEALED SET OF PLANS ARE ON FILE IN THE THIRD PARTY AGENCY'S OFFICE, AS DIRECTED BY THE OWNER.
- THIS BUILDING IS SUBJECT TO REVIEW AND APPROVAL OF THE FIRE INSPECTOR ON SITE TO COMPLIANCE WITH CH. 633 FIRE SAFETY CODE.
- THE MANUFACTURER'S DATA SHEET AND STATE (OPEN) INSURANCE SHALL BE PERMANENTLY MAINTAINED TO OR ABOUT THE ELECTRICAL PANEL.
- BUILDING IS UNCONDITIONAL, SEASONAL USE ONLY BUILDING IS PROTECTED FROM 20. FREEZING BY WINTERIZATION IN ACCORDANCE WITH CMT INSTRUCTIONS.

DATE: 2/24/2026 CMT NO. SMD-0356
 BY: WILLIAM R. HEBEL R. HEIDEL R. HEBEL
 APPROVED BY: Michael Fiala

MANUFACTURED BY:
 CMT INC. (TX)
 901 N. HIGHWAY 77
 HILLSBORO, TX 76645

SITE ADDRESS:
 RC TRACK
 1516 NW BASCOM NORRIS DR
 LAKE CITY FL 32055

CORTEZ



PANEL MARK NO. KEY PLAN

INDEX OF DRAWINGS

NO.	TITLE
CR-01	COVER SHEET
CR-02	RIGGING DETAIL
CR-03	FLOOR PLAN
CR-04	PLUMBING SCHEDULE
CR-05	PLUMBING SCHEDULE
CR-06	CASTING DETAILS
CR-07	WALL PANEL MARK W1
CR-08	WALL PANEL MARK W2
CR-09	WALL PANEL MARK W3
CR-10	WALL PANEL MARK W4
CR-11	WALL PANEL MARK W5
CR-12	WALL PANEL MARK W6
CR-13	FLOOR SLAB MARK F1
CR-14	ROOF SLAB MARK R1
CR-15	ROOF SLAB MARK R2
CR-16	FOUNDATION DETAIL
CR-17	FLOOR DRAIN LOCATIONS & BELOW FLOOR PIPING
CR-18	WATER, WASTE & VENT PIPING PLANS & NOTES
CR-19	PLUMBING SCHEDULE DIAGRAMS & NOTES
CR-20	ELECTRICAL NOTES & SCHEDULES
CR-21	ELECTRICAL PLAN LEGEND & NOTES
CR-22	EMBEDDED MATERIALS

APPLICABLE CODES

8TH EDITION (2023) FLORIDA BUILDING CODE W/ 2024 SUPPLEMENTS 1, 2, 3, & 4 (2021 IRC)
 8TH EDITION (2023) FLORIDA PLUMBING CODE W/ 2024 SUPPLEMENTS 1 (2021 IPC)
 8TH EDITION (2023) FLORIDA MECHANICAL CODE W/ 2024 SUPPLEMENTS 1 & 5 (2021 IMC)
 2020 NATIONAL ELECTRICAL CODE
 8TH EDITION (2023) FLORIDA ACCESSIBILITY CODE
 8TH EDITION (2023) FLORIDA ENERGY CONSERVATION CODE W/ 2024 SUPPLEMENTS 1 & 4 (2019 ASHRAE 90.1)

SPECIAL CONDITIONS AND/OR LIMITATIONS

ACCESSIBILITY TO THIS BUILDING, INCLUDING PARKING IS TO BE PROVIDED BY OTHERS AND CONSTRUCTED IN ACCORDANCE WITH ALL LOCAL BUILDING CODES

APPROVED PRODUCTS LIST

PRODUCT CATEGORY	SUB CATEGORY	MANUFACTURER	FLORIDA APPROVAL NUMBER
ROOFING	CEMENTS-ADHESIVES-C	UNITED STATES MANUFACTURING COMPANY	NOA NO. 20-0193107
EXTENSION DOORS	SMILING EXTENSION DOOR ASSEMBLIES	CECO DOOR PRODUCTS	FLORIDA FL 4553
WINDOWS	GLASS BLOCK	STEVES GLASS BLOCK INC. (FL)	MAA-DADE NOA NO. 20-1110108
SHUTTERS	STORM PANELS	EASTERN METAL SUPPLY	FLORIDA FL28359-RI

ATTENTION LOCAL INSPECTIONS DEPARTMENT

SITE INSTALLED ITEMS

THE FOLLOWING ITEMS HAVE NOT BEEN COMPLETED BY THE MANUFACTURER, HAVE NOT BEEN INSPECTED BY NTA AND ARE NOT CERTIFIED BY THE STATE. NOTE THAT THIS LIST DOES NOT NECESSARILY LIMIT THE ITEMS OF WORK AND MATERIAL THAT MAY BE REQUIRED FOR A COMPLETE INSTALLATION. ALL SITE RELATED ITEMS ARE SUBJECT TO LOCAL JURISDICTION APPROVAL. CODE COMPLIANCE MUST BE DETERMINED AT THE LOCAL LEVEL.

- THE COMPLETE FOUNDATION SUPPORT AND THE DOWN SYSTEM.
- ACCESSIBILITY TO THE BUILDING
- PLUMBING SUPPLY, WASTE, AND VENT PIPING BETWEEN UNITS AND PIPING DENOTED AS "NOT BY CMT"
- ELECTRICAL SERVICE HOOK-UP (INCLUDING FEEDERS) TO THE BUILDING
- CONNECTION OF ELECTRICAL CIRCUITS BETWEEN UNITS
- STRUCTURAL AND AESTHETIC CONNECTIONS BETWEEN UNITS
- CHAPTER 633 FIRE SAFETY CODE REVIEW & INSPECTION
- SITE ADDRESS PER FIG. 501.2

FOUNDATION & PROFESSIONAL REGULATION. THESE BUILDING PLANS DO NOT CONTAIN FOUNDATION SUPPORT AND THE DOWN SYSTEM DETAILS AND SPECIFICATIONS. THE ARCHITECT/ENGINEER OF BUILDING PLANS SHOULD BE CONTACTED TO OBTAIN APPROPRIATE FOUNDATION PLANS. IF FOUNDATION PLANS ARE DESIGNED BY OTHERS, THE ARCHITECT/ENGINEER OF BUILDING PLANS SHALL NOT BE HELD RESPONSIBLE OR LIABLE FOR THE FOUNDATION DESIGN AND THE CONSEQUENTIAL PERFORMANCE OF THE STRUCTURAL COMPONENTS AND SYSTEMS RELATING THERE TO.



This form has been electronically signed by William R. Hebel, III using the Florida Statewide Electronic Signature System. A printed copy of this document is not considered signed & sealed & the separate must be furnished on any electronic copies.



February 17, 2026

LFoster
 CMT® Products

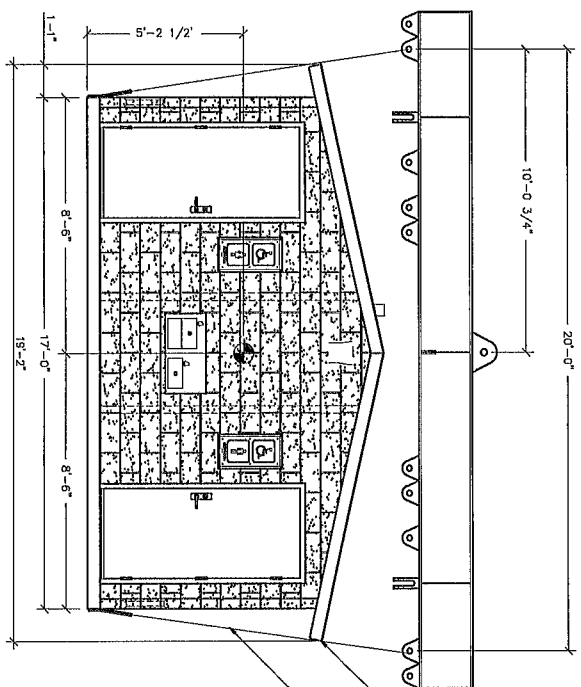
Form E Foundation, 500 Hwy 200, Tampa, FL 33607
 507 N. Highway 77, Henderson, TX 75626
 2000 W. Broadway, Suite 200, Chicago, IL 60608
 2000 W. Broadway, Suite 200, Chicago, IL 60608

COVER SHEET

NO.	DATE	BY	REVISION
1	02/24/2026	W.R. Hebel	ISSUE FOR PERMIT
2	02/24/2026	W.R. Hebel	ISSUE FOR PERMIT
3	02/24/2026	W.R. Hebel	ISSUE FOR PERMIT
4	02/24/2026	W.R. Hebel	ISSUE FOR PERMIT
5	02/24/2026	W.R. Hebel	ISSUE FOR PERMIT
6	02/24/2026	W.R. Hebel	ISSUE FOR PERMIT
7	02/24/2026	W.R. Hebel	ISSUE FOR PERMIT
8	02/24/2026	W.R. Hebel	ISSUE FOR PERMIT
9	02/24/2026	W.R. Hebel	ISSUE FOR PERMIT
10	02/24/2026	W.R. Hebel	ISSUE FOR PERMIT
11	02/24/2026	W.R. Hebel	ISSUE FOR PERMIT
12	02/24/2026	W.R. Hebel	ISSUE FOR PERMIT
13	02/24/2026	W.R. Hebel	ISSUE FOR PERMIT
14	02/24/2026	W.R. Hebel	ISSUE FOR PERMIT
15	02/24/2026	W.R. Hebel	ISSUE FOR PERMIT
16	02/24/2026	W.R. Hebel	ISSUE FOR PERMIT
17	02/24/2026	W.R. Hebel	ISSUE FOR PERMIT
18	02/24/2026	W.R. Hebel	ISSUE FOR PERMIT
19	02/24/2026	W.R. Hebel	ISSUE FOR PERMIT
20	02/24/2026	W.R. Hebel	ISSUE FOR PERMIT
21	02/24/2026	W.R. Hebel	ISSUE FOR PERMIT
22	02/24/2026	W.R. Hebel	ISSUE FOR PERMIT
23	02/24/2026	W.R. Hebel	ISSUE FOR PERMIT
24	02/24/2026	W.R. Hebel	ISSUE FOR PERMIT
25	02/24/2026	W.R. Hebel	ISSUE FOR PERMIT
26	02/24/2026	W.R. Hebel	ISSUE FOR PERMIT
27	02/24/2026	W.R. Hebel	ISSUE FOR PERMIT
28	02/24/2026	W.R. Hebel	ISSUE FOR PERMIT
29	02/24/2026	W.R. Hebel	ISSUE FOR PERMIT
30	02/24/2026	W.R. Hebel	ISSUE FOR PERMIT
31	02/24/2026	W.R. Hebel	ISSUE FOR PERMIT
32	02/24/2026	W.R. Hebel	ISSUE FOR PERMIT
33	02/24/2026	W.R. Hebel	ISSUE FOR PERMIT
34	02/24/2026	W.R. Hebel	ISSUE FOR PERMIT
35	02/24/2026	W.R. Hebel	ISSUE FOR PERMIT
36	02/24/2026	W.R. Hebel	ISSUE FOR PERMIT
37	02/24/2026	W.R. Hebel	ISSUE FOR PERMIT
38	02/24/2026	W.R. Hebel	ISSUE FOR PERMIT
39	02/24/2026	W.R. Hebel	ISSUE FOR PERMIT
40	02/24/2026	W.R. Hebel	ISSUE FOR PERMIT
41	02/24/2026	W.R. Hebel	ISSUE FOR PERMIT
42	02/24/2026	W.R. Hebel	ISSUE FOR PERMIT
43	02/24/2026	W.R. Hebel	ISSUE FOR PERMIT
44	02/24/2026	W.R. Hebel	ISSUE FOR PERMIT
45	02/24/2026	W.R. Hebel	ISSUE FOR PERMIT
46	02/24/2026	W.R. Hebel	ISSUE FOR PERMIT
47	02/24/2026	W.R. Hebel	ISSUE FOR PERMIT
48	02/24/2026	W.R. Hebel	ISSUE FOR PERMIT
49	02/24/2026	W.R. Hebel	ISSUE FOR PERMIT
50	02/24/2026	W.R. Hebel	ISSUE FOR PERMIT
51	02/24/2026	W.R. Hebel	ISSUE FOR PERMIT
52	02/24/2026	W.R. Hebel	ISSUE FOR PERMIT
53	02/24/2026	W.R. Hebel	ISSUE FOR PERMIT
54	02/24/2026	W.R. Hebel	ISSUE FOR PERMIT
55	02/24/2026	W.R. Hebel	ISSUE FOR PERMIT
56	02/24/2026	W.R. Hebel	ISSUE FOR PERMIT
57	02/24/2026	W.R. Hebel	ISSUE FOR PERMIT
58	02/24/2026	W.R. Hebel	ISSUE FOR PERMIT
59	02/24/2026	W.R. Hebel	ISSUE FOR PERMIT
60	02/24/2026	W.R. Hebel	ISSUE FOR PERMIT
61	02/24/2026	W.R. Hebel	ISSUE FOR PERMIT
62	02/24/2026	W.R. Hebel	ISSUE FOR PERMIT
63	02/24/2026	W.R. Hebel	ISSUE FOR PERMIT
64	02/24/2026	W.R. Hebel	ISSUE FOR PERMIT
65	02/24/2026	W.R. Hebel	ISSUE FOR PERMIT
66	02/24/2026	W.R. Hebel	ISSUE FOR PERMIT
67	02/24/2026	W.R. Hebel	ISSUE FOR PERMIT
68	02/24/2026	W.R. Hebel	ISSUE FOR PERMIT
69	02/24/2026	W.R. Hebel	ISSUE FOR PERMIT
70	02/24/2026	W.R. Hebel	ISSUE FOR PERMIT
71	02/24/2026	W.R. Hebel	ISSUE FOR PERMIT
72	02/24/2026	W.R. Hebel	ISSUE FOR PERMIT
73	02/24/2026	W.R. Hebel	ISSUE FOR PERMIT
74	02/24/2026	W.R. Hebel	ISSUE FOR PERMIT
75	02/24/2026	W.R. Hebel	ISSUE FOR PERMIT
76	02/24/2026	W.R. Hebel	ISSUE FOR PERMIT
77	02/24/2026	W.R. Hebel	ISSUE FOR PERMIT
78	02/24/2026	W.R. Hebel	ISSUE FOR PERMIT
79	02/24/2026	W.R. Hebel	ISSUE FOR PERMIT
80	02/24/2026	W.R. Hebel	ISSUE FOR PERMIT
81	02/24/2026	W.R. Hebel	ISSUE FOR PERMIT
82	02/24/2026	W.R. Hebel	ISSUE FOR PERMIT
83	02/24/2026	W.R. Hebel	ISSUE FOR PERMIT
84	02/24/2026	W.R. Hebel	ISSUE FOR PERMIT
85	02/24/2026	W.R. Hebel	ISSUE FOR PERMIT
86	02/24/2026	W.R. Hebel	ISSUE FOR PERMIT
87	02/24/2026	W.R. Hebel	ISSUE FOR PERMIT
88	02/24/2026	W.R. Hebel	ISSUE FOR PERMIT
89	02/24/2026	W.R. Hebel	ISSUE FOR PERMIT
90	02/24/2026	W.R. Hebel	ISSUE FOR PERMIT
91	02/24/2026	W.R. Hebel	ISSUE FOR PERMIT
92	02/24/2026	W.R. Hebel	ISSUE FOR PERMIT
93	02/24/2026	W.R. Hebel	ISSUE FOR PERMIT
94	02/24/2026	W.R. Hebel	ISSUE FOR PERMIT
95	02/24/2026	W.R. Hebel	ISSUE FOR PERMIT
96	02/24/2026	W.R. Hebel	ISSUE FOR PERMIT
97	02/24/2026	W.R. Hebel	ISSUE FOR PERMIT
98	02/24/2026	W.R. Hebel	ISSUE FOR PERMIT
99	02/24/2026	W.R. Hebel	ISSUE FOR PERMIT
100	02/24/2026	W.R. Hebel	ISSUE FOR PERMIT

These plans comply with the applicable codes and standards and are approved for construction in accordance with the following table:

Code Type	173
Approved By	1
Approved For	1831 STATE ST.
City	0
State	0
Project No.	1831 STATE ST. 1831
Approved Date	02/22/2026
Approved By	1831 STATE ST.

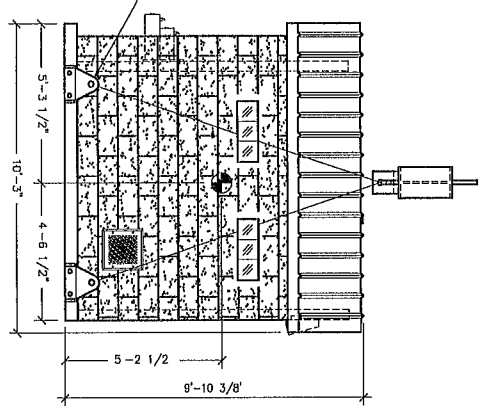


FRONT ELEVATION

SOFTENER REQUIRED TO PREVENT SPALLING (TOP 4 FLS.)

HOSTING CABLE SLINGS W/ LOCKING SHACKLE @ TOP CAPACITY = 7 TON

PS-42 LIFTING EYE ATTACH TO AS-47 EMBEDS W/ (2) 1 1/2" DIA. HIGH TENSILE COIL BOLTS (SHEAR CAPACITY = 18,000# BOLT)



RIGHT SIDE ELEVATION

SHIPPING WEIGHTS AND DIMENSIONS			
WEIGHT	LENGTH	WIDTH	HEIGHT
44,000	19'-2"	10'-3"	9'-10 3/8"

NO.	DESCRIPTION	DATE	BY
1	ISSUE FOR CONSTRUCTION	02/22/2026	1831 STATE ST.
2	ISSUE FOR PERMITS	02/22/2026	1831 STATE ST.
3	ISSUE FOR RECORDS	02/22/2026	1831 STATE ST.

The information contained herein is proprietary and the user of this information is limited to the project for which it was prepared. It is not to be used for any other project without the written consent of the engineer. The engineer shall not be responsible for any errors or omissions in this information. The user of this information shall be responsible for its accuracy and completeness. The user of this information shall be responsible for its use in accordance with the applicable codes and standards. The user of this information shall be responsible for its use in accordance with the applicable codes and standards. The user of this information shall be responsible for its use in accordance with the applicable codes and standards.

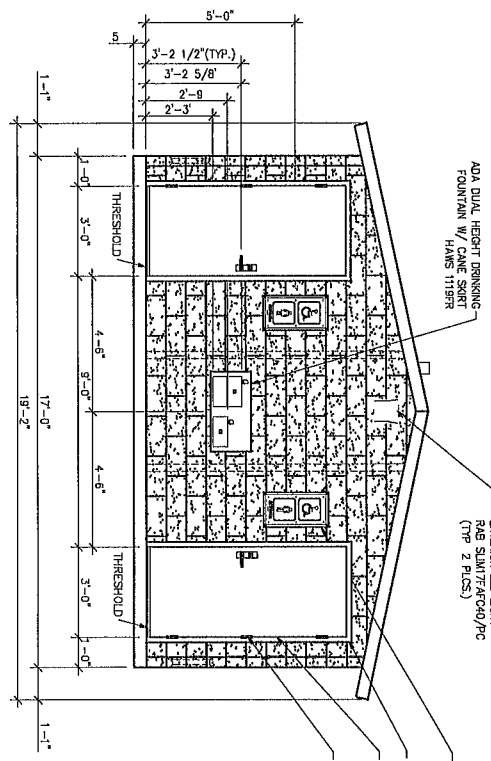
LB Foster
CXT[®] Products

5701 E. Frontage Ave. #200, Waukesha, WI 53186
300 N. Liberty, Waukesha, WI 53186
262.533.8888

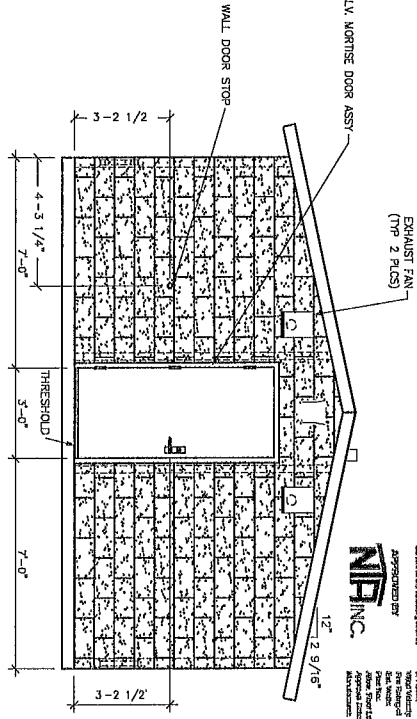
BUILDING NUMBER CR-1985
CORTIZ

February 17, 2026

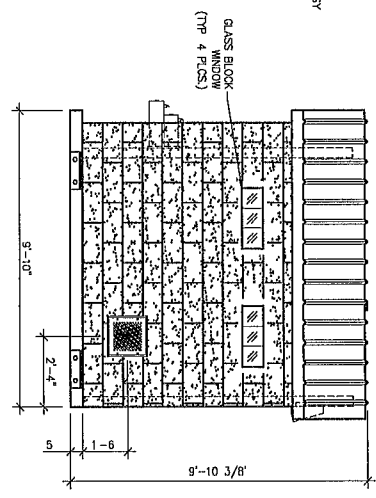




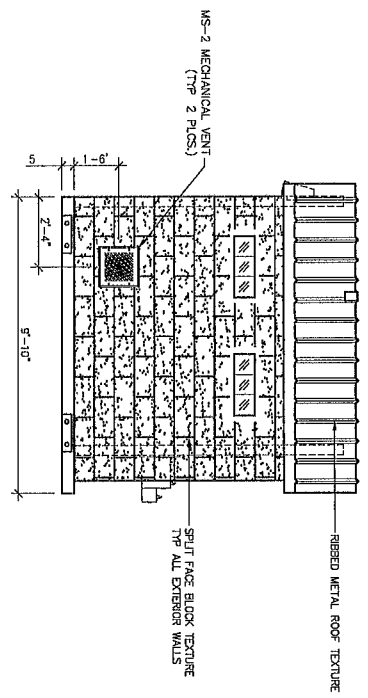
FRONT ELEVATION



REAR ELEVATION



RIGHT SIDE ELEVATION



LEFT SIDE ELEVATION

These drawings were prepared by NIP INC. for the purpose of providing a visual representation of the proposed building. The drawings are not to be used for construction purposes without the approval of NIP INC. All dimensions are in feet and inches. NIP INC. is not responsible for any errors or omissions in these drawings. NIP INC. is not responsible for any construction or safety issues. NIP INC. is not responsible for any environmental or regulatory issues. NIP INC. is not responsible for any other issues. NIP INC. is not responsible for any other issues.

NIP INC.

12' 2 9/16"

February 17, 2026

STATE OF TEXAS

PROFESSIONAL ENGINEER

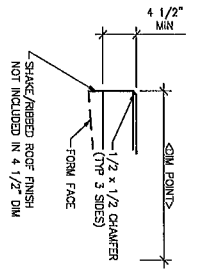
NO. 58523

LB Foster

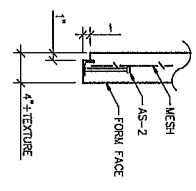
CXT Products

ITEM NO.	DESCRIPTION	QTY	UNIT
1	WALL DOOR STOP	1	EA
2	SPRING HINGE 4.5x4.5	9	EA
3	GLASS BLOCK WINDOW	4	EA
4	S-2 'BROWN'	2	EA
5	MS-2	2	EA
6	3098 MORTISE DOOR ASSY	2	EA
7	RENDERING PILOT HINGE	2	EA
8	DRINKING FOUNTAIN W/ CANE SPOUT	1	EA

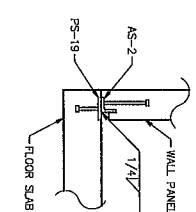
DATE: 2/17/26
 DRAWN BY: LB FOSTER
 CHECKED BY: LB FOSTER
 PROJECT NO: CR-04



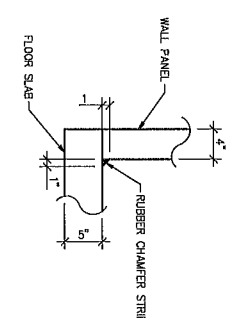
1 TYPICAL ROOF SLAB EDGE SCALE: 3/4"=1'-0"



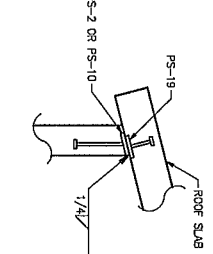
2 AS-2 CAST DETAIL SCALE: 3/4"=1'-0"



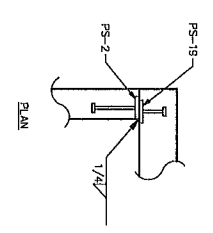
3 TYPICAL WALL TO FLOOR SLAB WELDED CONNECTION SCALE: 3/4"=1'-0"



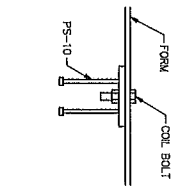
4 TYPICAL WALL TO FLOOR SLAB JOINT DETAIL SCALE: 3/4"=1'-0"



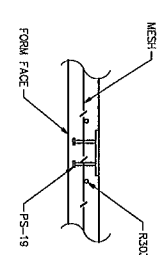
5 TYPICAL WALL TO ROOF SLAB WELDED CONNECTION SCALE: 3/4"=1'-0"



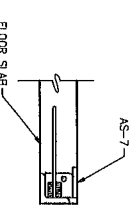
6 TYPICAL WALL TO WALL PANEL WELDED CONNECTION SCALE: 3/4"=1'-0"



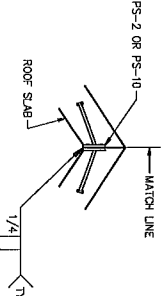
7 PS-10 CASTING DETAIL SCALE: 1"=1'-0"



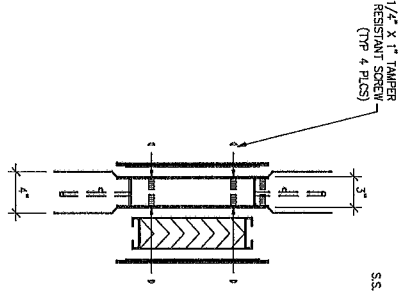
8 PS-19 CASTING DETAIL SCALE: 3/4"=1'-0"



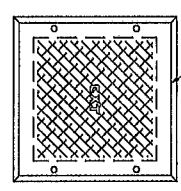
9 FLOOR LIFT PLATE DETAIL SCALE: 3/4"=1'-0"



10 ROOF PEAK WELDMENT DETAIL SCALE: 3/4"=1'-0"



11 STANDARD CAST IN FRAME WALL VENT DETAIL



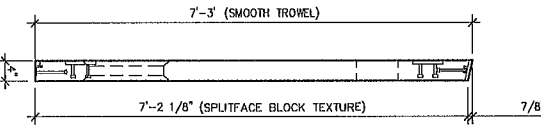
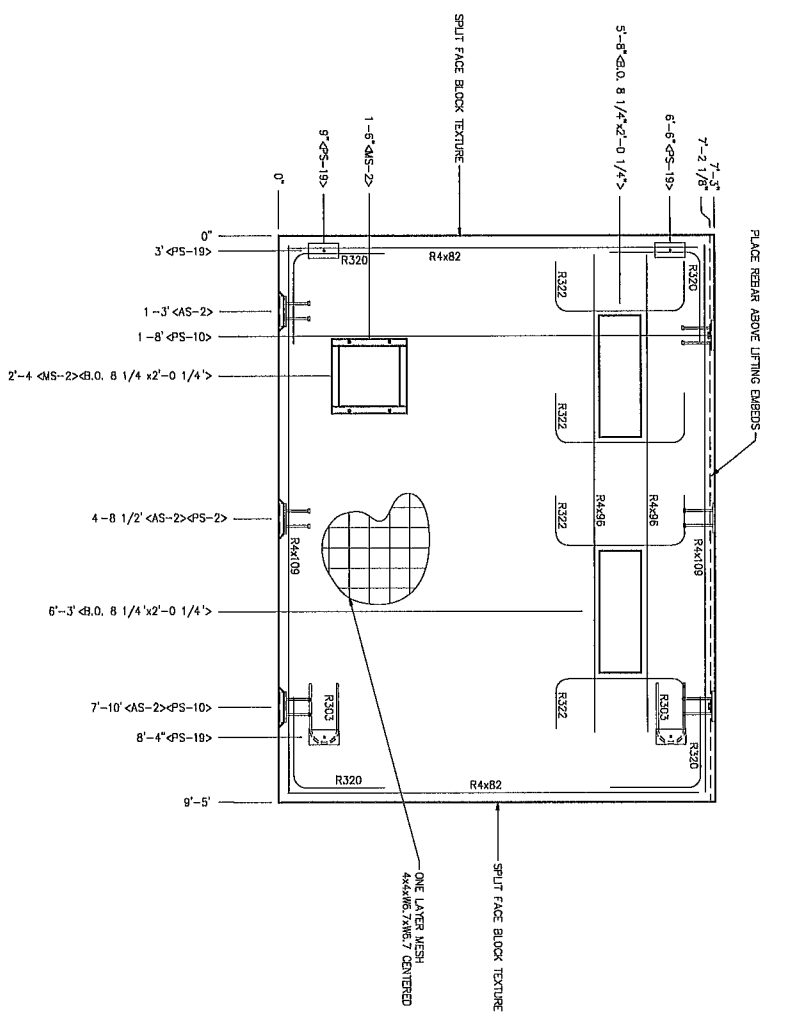
This system complies with the International Building Code and International Codes and is subject to the following notes:

APPROVED BY
NIP INC.

Drawn	Checked	Scale
IT	IT	1/4"=1'-0"
IT	IT	3/4"=1'-0"
IT	IT	1"=1'-0"
IT	IT	1/2"=1'-0"
IT	IT	3/8"=1'-0"
IT	IT	5/16"=1'-0"
IT	IT	3/16"=1'-0"
IT	IT	1/8"=1'-0"
IT	IT	1/16"=1'-0"
IT	IT	1/32"=1'-0"
IT	IT	1/64"=1'-0"
IT	IT	1/128"=1'-0"
IT	IT	1/256"=1'-0"
IT	IT	1/512"=1'-0"
IT	IT	1/1024"=1'-0"
IT	IT	1/2048"=1'-0"
IT	IT	1/4096"=1'-0"
IT	IT	1/8192"=1'-0"
IT	IT	1/16384"=1'-0"
IT	IT	1/32768"=1'-0"
IT	IT	1/65536"=1'-0"
IT	IT	1/131072"=1'-0"
IT	IT	1/262144"=1'-0"
IT	IT	1/524288"=1'-0"
IT	IT	1/1048576"=1'-0"
IT	IT	1/2097152"=1'-0"
IT	IT	1/4194304"=1'-0"
IT	IT	1/8388608"=1'-0"
IT	IT	1/16777216"=1'-0"
IT	IT	1/33554432"=1'-0"
IT	IT	1/67108864"=1'-0"
IT	IT	1/134217728"=1'-0"
IT	IT	1/268435456"=1'-0"
IT	IT	1/536870912"=1'-0"
IT	IT	1/1073741824"=1'-0"
IT	IT	1/2147483648"=1'-0"
IT	IT	1/4294967296"=1'-0"
IT	IT	1/8589934592"=1'-0"
IT	IT	1/17179869184"=1'-0"
IT	IT	1/34359738368"=1'-0"
IT	IT	1/68719476736"=1'-0"
IT	IT	1/137438953472"=1'-0"
IT	IT	1/274877906944"=1'-0"
IT	IT	1/549755813888"=1'-0"
IT	IT	1/1099511627776"=1'-0"
IT	IT	1/2199023255552"=1'-0"
IT	IT	1/4398046511104"=1'-0"
IT	IT	1/8796093022208"=1'-0"
IT	IT	1/17592186044416"=1'-0"
IT	IT	1/35184372088832"=1'-0"
IT	IT	1/70368744177664"=1'-0"
IT	IT	1/140737488355328"=1'-0"
IT	IT	1/281474976710656"=1'-0"
IT	IT	1/562949953421312"=1'-0"
IT	IT	1/1125899906842624"=1'-0"
IT	IT	1/2251799813685248"=1'-0"
IT	IT	1/4503599627370496"=1'-0"
IT	IT	1/9007199254740992"=1'-0"
IT	IT	1/18014398509481984"=1'-0"
IT	IT	1/36028797018963968"=1'-0"
IT	IT	1/72057594037927936"=1'-0"
IT	IT	1/144115188075855872"=1'-0"
IT	IT	1/288230376151711744"=1'-0"
IT	IT	1/576460752303423488"=1'-0"
IT	IT	1/1152921504606846976"=1'-0"
IT	IT	1/2305843009213693952"=1'-0"
IT	IT	1/4611686018427387904"=1'-0"
IT	IT	1/9223372036854775808"=1'-0"
IT	IT	1/18446744073709551616"=1'-0"
IT	IT	1/36893488147419103232"=1'-0"
IT	IT	1/73786976294838206464"=1'-0"
IT	IT	1/147573952589676412928"=1'-0"
IT	IT	1/295147905179352825856"=1'-0"
IT	IT	1/590295810358705651712"=1'-0"
IT	IT	1/1180591620717411303424"=1'-0"
IT	IT	1/2361183241434822606848"=1'-0"
IT	IT	1/4722366482869645213696"=1'-0"
IT	IT	1/9444732965739290427392"=1'-0"
IT	IT	1/18889465931478580854784"=1'-0"
IT	IT	1/37778931862957161709568"=1'-0"
IT	IT	1/75557863725914323419136"=1'-0"
IT	IT	1/151115727451828646838272"=1'-0"
IT	IT	1/302231454903657293675544"=1'-0"
IT	IT	1/604462909807314587351088"=1'-0"
IT	IT	1/1208925819614629174702176"=1'-0"
IT	IT	1/2417851639229258349404352"=1'-0"
IT	IT	1/4835703278458516698808704"=1'-0"
IT	IT	1/9671406556917033397617408"=1'-0"
IT	IT	1/19342813113834066795234816"=1'-0"
IT	IT	1/38685626227668133590469632"=1'-0"
IT	IT	1/77371252455336267180939264"=1'-0"
IT	IT	1/15474250491067253436188528"=1'-0"
IT	IT	1/30948500982134506872377056"=1'-0"
IT	IT	1/61897001964269013744754112"=1'-0"
IT	IT	1/123794003928538027489508224"=1'-0"
IT	IT	1/247588007857076054979016448"=1'-0"
IT	IT	1/49517601571415210995803296"=1'-0"
IT	IT	1/99035203142830421991606592"=1'-0"
IT	IT	1/198070406285660843923213184"=1'-0"
IT	IT	1/396140812571321687846426368"=1'-0"
IT	IT	1/792281625142643375692852736"=1'-0"
IT	IT	1/1584563250285286751385705472"=1'-0"
IT	IT	1/3169126500570573502771410944"=1'-0"
IT	IT	1/6338253001141147005542821888"=1'-0"
IT	IT	1/126765060022822940110851643776"=1'-0"
IT	IT	1/25353012004564588022171287552"=1'-0"
IT	IT	1/50706024009129176044342575104"=1'-0"
IT	IT	1/101412048018258352088685150208"=1'-0"
IT	IT	1/202824096036516704177370300416"=1'-0"
IT	IT	1/405648192073033408354740600832"=1'-0"
IT	IT	1/811296384146066816709481201664"=1'-0"
IT	IT	1/1622592768292133634189762403328"=1'-0"
IT	IT	1/3245185536584267268379524806656"=1'-0"
IT	IT	1/6490371073168534536759049613312"=1'-0"
IT	IT	1/12980742146370669073518099226624"=1'-0"
IT	IT	1/25961484292741338147036198453248"=1'-0"
IT	IT	1/51922968585482676294072396810656"=1'-0"
IT	IT	1/103845937170965352588144793621312"=1'-0"
IT	IT	1/207691874341930705176289587242624"=1'-0"
IT	IT	1/415383748683861410352579174485248"=1'-0"
IT	IT	1/830767497367722820705158348970496"=1'-0"
IT	IT	1/166153499473544564141031677940992"=1'-0"
IT	IT	1/3323069989470891282820633558819936"=1'-0"
IT	IT	1/664613997894178256564126711779872"=1'-0"
IT	IT	1/1329227995788356511128253435559744"=1'-0"
IT	IT	1/2658455991576713022256506871191488"=1'-0"
IT	IT	1/5316911983153426044513113742382976"=1'-0"
IT	IT	1/10633823966306852089026227484765952"=1'-0"
IT	IT	1/21267647932613704178052444969531904"=1'-0"
IT	IT	1/42535295865227408356104889739062016"=1'-0"
IT	IT	1/85070591730454816712209779478124032"=1'-0"
IT	IT	1/17014118346090963342441955895624064"=1'-0"
IT	IT	1/34028236692181926684883911791248128"=1'-0"
IT	IT	1/68056473384363853369767823582492544"=1'-0"
IT	IT	1/13611294676872770673953564716497088"=1'-0"
IT	IT	1/27222589353745541347907129432994176"=1'-0"
IT	IT	1/54445178707491082695814258865988352"=1'-0"
IT	IT	1/108890357414982165391628517731976704"=1'-0"
IT	IT	1/217780714829964330783257035463953408"=1'-0"
IT	IT	1/435561429659928661566514070927906816"=1'-0"
IT	IT	1/87112285931985732313302814185581376"=1'-0"
IT	IT	1/17422457183971146426605628371166752"=1'-0"
IT	IT	1/3484491436794229285321125574233504"=1'-0"
IT	IT	1/6968982873588458570642511148467008"=1'-0"
IT	IT	1/1393796574717711714128502296934016"=1'-0"
IT	IT	1/2787593149435423428257004593868032"=1'-0"
IT	IT	1/5575186298870846856514009187736064"=1'-0"
IT	IT	1/11150372597741693713028018375472128"=1'-0"
IT	IT	1/22300745195483387426056036750944256"=1'-0"
IT	IT	1/44601490390966774852112073501889536"=1'-0"
IT	IT	1/89202980781933549704224147003779072"=1'-0"
IT	IT	1/178405961563867097408448294007540144"=1'-0"
IT	IT	1/356811923127734194816896588015088288"=1'-0"
IT	IT	1/713623846255468389633793176030177536"=1'-0"
IT	IT	1/1427247692510936779267586352060352672"=1'-0"
IT	IT	1/2854495385021873558535172704120705344"=1'-0"
IT	IT	1/5708990770043747117107034408241410688"=1'-0"
IT	IT	1/1141798154008749423421406881682821376"=1'-0"
IT	IT	1/2283596308017498846842813733365642752"=1'-0"
IT	IT	1/4567192616034997693685627466731285504"=1'-0"
IT	IT	1/913438523206999538737125493346257088"=1'-0"
IT	IT	1/1826877046413999077474250986695114176"=1'-0"
IT	IT	1/3653754092827998154948501973390228352"=1'-0"
IT	IT	1/730750818565599630989700394678045664"=1'-0"
IT	IT	1/1461501637131199261979400789356091328"=1'-0"
IT	IT	1/2923003274262398523958801578712182656"=1'-0"
IT	IT	1/5846006548524797047917603157424365312"=1'-0"
IT	IT	1/11692013097049594095835206314848730624"=1'-0"
IT	IT	1/23384026194099188191670412629697461248"=1'-0"
IT	IT	1/46768052388198376383340825259394922496"=1'-0"
IT	IT	1/93536104776396752766681650518789844992"=1'-0"
IT	IT	1/187072209552793505533373010237579689984"=1'-0"
IT	IT	1/374144419105587011066746020475159379968"=1'-0"
IT	IT	1/748288838211174022133492040950318759936"=1'-0"
IT	IT	1/1496577676422348044267884019006375199712"=1'-0"
IT	IT	1/299315535284469608853576803801275199424"=1'-0"
IT	IT	1/59863107056893921770675360760255039888"=1'-0"
IT	IT	1/119726214113787843541351213200510777776"=1'-0"
IT	IT	1/239452428227575687082702426401025555552"=1'-0"
IT	IT	1/478904856455151374165404852802051111104"=1'-0"
IT	IT	1/957809712910302748330816105604051222208"=1'-0"
IT	IT	1/1915619425820605496661632211201024444416"=1'-0"
IT	IT	1/383123885164121099332326442240204888832"=1'-0"
IT	IT	1/766247770328242198664652884480409777664"=1'-0

These finite element analyses were prepared by the Engineering Department of the University of Wisconsin at Madison and are not intended for use and do not constitute a design or a certificate of design by the University of Wisconsin at Madison.

APPROVED BY
NE INC.

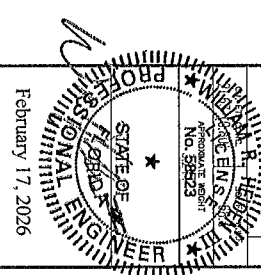


NOTES:
 1. ALL REBAR TO BE CENTERED IN PANEL.

REINFORCING MATERIALS	QTY
AS-2	3
FS-2	1
FS-10	2
FS-19	4
R303	2
R320	4
R4409	2
R4409	4
R4409	2
MS-2	1

B.O. 8 1/4" x 2'-0 1/4"	2
R4409	1
MS-2	1

CR-10	1
-------	---



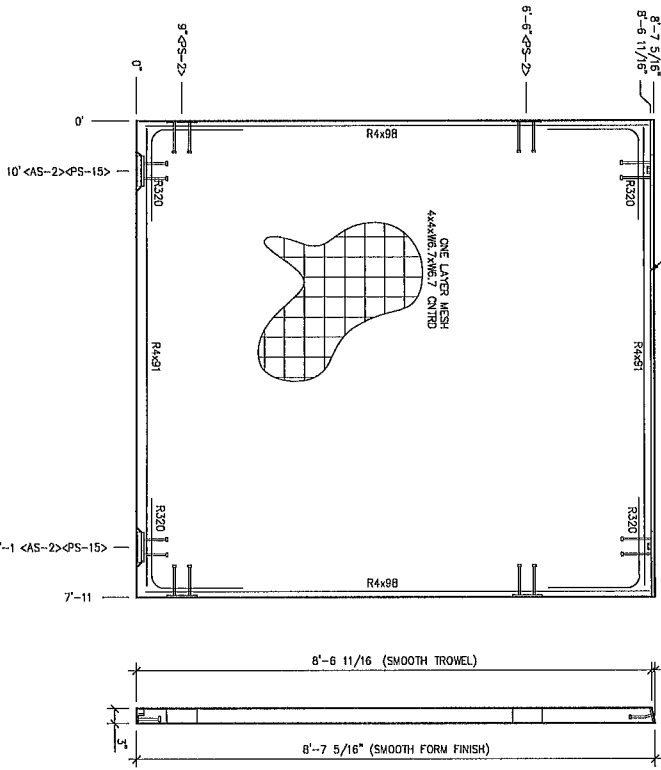
LB Foster
 CXT® Products

February 17, 2026

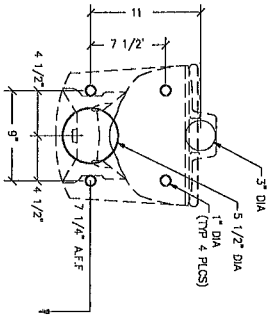
1501 E. Ringwood Ave. Ste. 200, Wausau, WI 54980
 200 W. Park Road, Wausau, WI 54980
 715.833.1111
 www.lbfoster.com

Building Number CR-1985
 Cortez
 The information contained herein is proprietary and the user shall not be permitted to reproduce, distribute, or otherwise use this information without the express written consent of LB Foster. This information is provided for informational purposes only and does not constitute a design or a certificate of design by the University of Wisconsin at Madison.

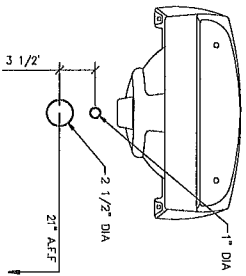
EMBED DETAIL



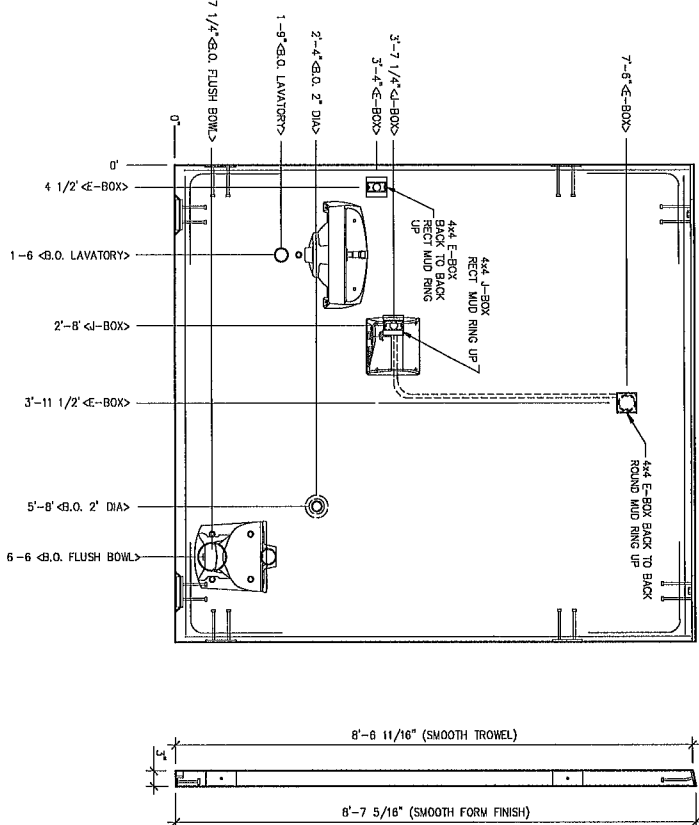
BLOCKOUT DETAIL
FLUSH VALVE BOWL DETAIL
AMERICAN STANDARD 2834.101



BLOCKOUT DETAIL
LAVATORY DETAIL
AMERICAN STANDARD 0358.421



BLOCKOUT DETAIL

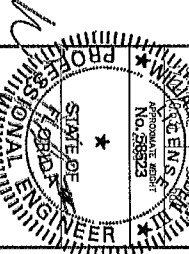


These products comply with the
Approved Manufacturers listing
of products and materials
shown in the following table
approved by

Code, Type	Y2S
Decorative	1
Structural	1
Approved by	1
Manufacturer	1
Product Name	1
Product Code	1
Product Description	1
Product Dimensions	1
Product Weight	1
Product Material	1
Product Finish	1
Product Color	1
Product Location	1
Product Date	1
Product Status	1
Product Notes	1

NOTES:
1. ALL REAR TO BE CENTERED IN PANEL

DESIGNED MATERIALS	QTY
AS-2	2
PS-2	4
PS-15	2
R320	4
R441	2
R448	2
444 E-BOX	4
ROUND MUD RING	1
RECT. MUD RING	2
444 J-BOX	1
EQ. LAVATORY	1
EQ. FLUSH BOWL	1
EQ. 2" DIA	1



February 17, 2026

LB Foster
CMT Products

3071 E. Rindberg Ave. Ste. 200, Houston, TX 77057
301 N. Shepherd, 7th. Houston, TX 77058
4000 West Loop, Houston, TX 77027

BUILDING NUMBER CR-1585

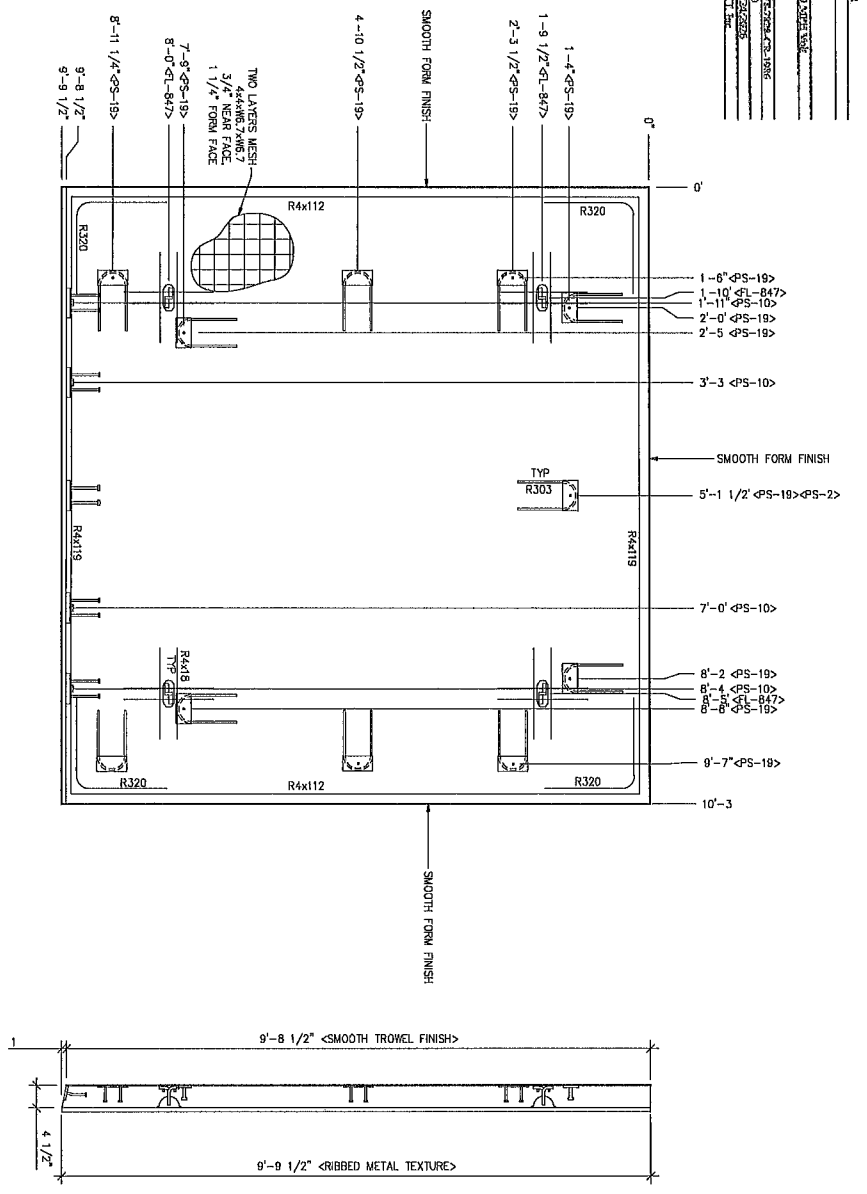
The information contained herein is proprietary and the
use of this information is restricted to the project
described herein. No part of this information may be
reproduced, stored in a retrieval system, or transmitted,
in any form or by any means, electronic, mechanical,
photocopying, recording, or by any information storage
and retrieval system, without the prior written consent
of LB Foster. This information is provided for the use of
the contractor and is not to be used for any other
purpose. The contractor is responsible for the accuracy
of the information provided herein. The contractor
shall verify the accuracy of the information provided
herein before use. The contractor shall be responsible
for the accuracy of the information provided herein.
CMT Approved

ITEM NO.	DESCRIPTION	QTY	UNIT
1	3071 E. RINDBERG AVE. STE. 200, HOUSTON, TX 77057	1	LINE
2	301 N. SHEPHERD, 7TH. HOUSTON, TX 77058	1	LINE
3	4000 WEST LOOP, HOUSTON, TX 77027	1	LINE
4	WALL PANEL	1	MARK W6
5	MARK W6	1	MARK W6

CR-12

These plans comply with the
 7th Edition of the International
 Building Code and all other
 codes and regulations in the
 jurisdiction in which the building
 is located.

APPROVED BY
NFB INC.
 Date of Approval: 02/17/2026
 Project No: CR-15
 Building No: 158-2026-CR-15B
 Floor No: 1
 Area: ROOF SLAB
 Approved By: [Signature]
 Approved Date: 02/17/2026
 Approved Location: [Signature]



- NOTES:**
- EXCEPT R320 & R4x18, REINFORCING BARS TO BE PLACED IN PANS, ONE BAR ON EACH FACE OF PANEL.
 - REAR COVER: 3/4" COVER
 - NEAR FACE 1 1/4" COVER
 - BARS R4x18 TO BE PLACED ACCORDING TO R1-847 MFR INSTRUCTIONS.
 - ALL OTHER REBAR TO BE CENTERED IN PANEL.

NO.	REVISION	DATE
1	ISSUE FOR PERMIT	02/17/2026
2	ISSUE FOR PERMIT	02/17/2026
3	ISSUE FOR PERMIT	02/17/2026
4	ISSUE FOR PERMIT	02/17/2026

PROJECT NO: CR-15
 SHEET NO: 15
 TOTAL SHEETS: 22

LB Foster
 CXT® Products
 67th E. Fairway Ave. Ste. 200, Naperville, IL 60563
 330 N. Lincoln Hwy., Elmhurst, IL 60120
 300 N. Broadway, Elmhurst, IL 60120
 300 N. Broadway, Elmhurst, IL 60120

CORTIZ
 BUILDING NUMBER CR-15B

DATE: February 17, 2026



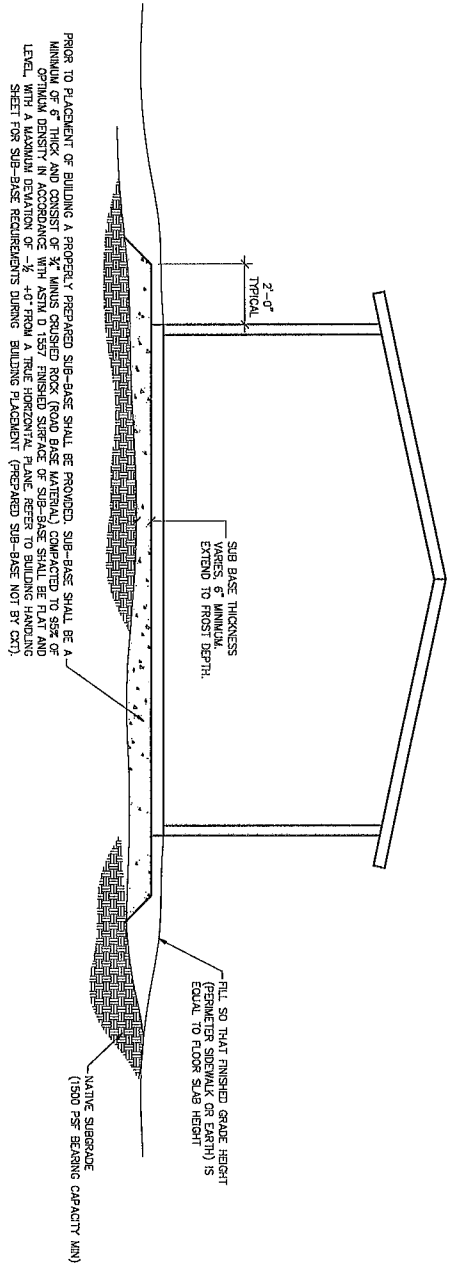
NO.	REVISION	DATE
1	ISSUE FOR PERMIT	02/17/2026
2	ISSUE FOR PERMIT	02/17/2026
3	ISSUE FOR PERMIT	02/17/2026
4	ISSUE FOR PERMIT	02/17/2026

These plans comply with the provisions of the International Building Code and International Residential Code and conform to the following Ordinance:

APPROVED BY

NTI INC.

Contract Type: 118
 County: 118
 Address: 118
 City: 118
 State: 118
 Zip: 118
 Project Name: 118
 Date: 118
 Drawn By: 118
 Checked By: 118
 Approved Date: 118
 Approved By: 118



PRIOR TO PLACEMENT OF BUILDING A PROPERLY PREPARED SUB-BASE SHALL BE PROVIDED. SUB-BASE SHALL BE A MINIMUM OF 6" THICK AND CONSIST OF ¾" MINUS CRUSHED ROCK (ROAD BASE MATERIAL) COMPACTED TO 95% OF STANDARD PROCTOR DENSITY. THE SUB-BASE SHALL BE PLACED AT A MINIMUM OF 2" ABOVE FINISHED GRADE LEVEL, WITH A MAXIMUM DEVIATION OF -½" +0" FROM A TRUE HORIZONTAL PLANE. REFER TO BUILDING HANDLING SHEET FOR SUB-BASE REQUIREMENTS DURING BUILDING PLACEMENT (PREPARED SUB-BASE NOT BY CXT).

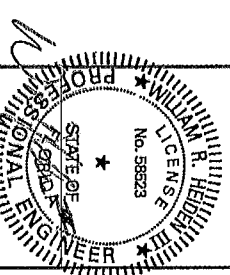
NOTE:

THIS FACTORY ASSIGNED BUILDING AS CONSTRUCTED, PROVIDES A ROAD BOX TYPE STRUCTURAL SYSTEM. VERTICAL LOADS ARE TRANSMITTED PRIMARILY THROUGH BEARING WALLS TO THE STRUCTURAL SLAB FLOOR OF THE BUILDING. THE VERTICAL LOADS ARE THEN DISTRIBUTED THROUGH THE REINFORCED CONCRETE SLAB TO THE FOUNDATION. THE FOUNDATION SHALL BE DESIGNED TO SUPPORT THE VERTICAL AND LATERAL LOADS OF THE BUILDING. THE NATIVE SUB-GRADE AS WITH MOST CONSTRUCTION, THIS DOES REQUIRE THE NATIVE SUB-GRADE TO BE STRENGTHENED AND TOP SOIL PRIOR TO PLACEMENT OF THE PREPARED GRANULAR SUB-BASE. DUE TO THE INHERENT STIFFNESS OF THE BUILDING, IT WILL REMAIN SAFE AND STRUCTURALLY SOUND IN THE UNLIKELY EVENT OF FREEZING ACTION BELOW THE BUILDING REGARDLESS OF NATURAL FREEZE/THAW CYCLES ANTICIPATED TO BE ENCOUNTERED IN THE STATE OF FLORIDA.

LATERAL LOADS ARE TRANSMITTED TO THE GROUND THROUGH FRICTIONAL RESISTANCE WITHOUT SLIDING OR SHEARING BETWEEN THE BUILDING FLOOR SLAB AND THE PREPARED SOIL AND GRAVEL SUB-BASE ON WHICH THE BUILDING RESTS. SEISMIC ANALYSES ARE BASED ON LOADS DETERMINED IN ACCORDANCE WITH THE INTERNATIONAL BUILDING CODE USING PROVISIONS, WHICH MEET OR EXCEED THE CODE PRESCRIBED REQUIREMENTS FOR THIS INSTALLATION.

THIS BUILDING AS DESIGNED, RESTING ON A PROPERLY PREPARED GRANULAR SUB-BASE WILL BE SAFE AND STRUCTURALLY SOUND FOR VERTICAL AND LATERAL LOADS AS DISCUSSED ABOVE. A FULL REPORT FOR FOUNDATION DATA AT THE BUILDING PERIMETER AND AN ANCHORAGE SYSTEM, TYPICAL FOR OTHER TYPES OF BUILDING CONSTRUCTION, ARE NOT REQUIRED FOR THIS BUILDING.

THE FOUNDATION FOR THIS STRUCTURE IS ESSENTIALLY THE COMBINATION OF THE COMPACTED SUB-BASE MATERIAL AND THE BUILDING'S REINFORCED SLAB. THE COMBINATION OF THE COMPACTED SUB-BASE MATERIAL AND THE BUILDING'S REINFORCED SLAB NEED TO BE AT LEAST 12" THICK AND THE COMPACTED SUB-BASE MATERIAL SHALL EXTEND BELOW THE LOCAL FROST DEPTH.



February 17, 2026

LFoster
CXT® Products

6701 E. Ponderosa Ave Bldg 200 Mopac, D 55587
 501 N. Highway 77, Addison, TX 75001
 501 Westinghouse Blvd, Madison, WI 53705

CORTIZ
BUILDING NUMBER CR-1585

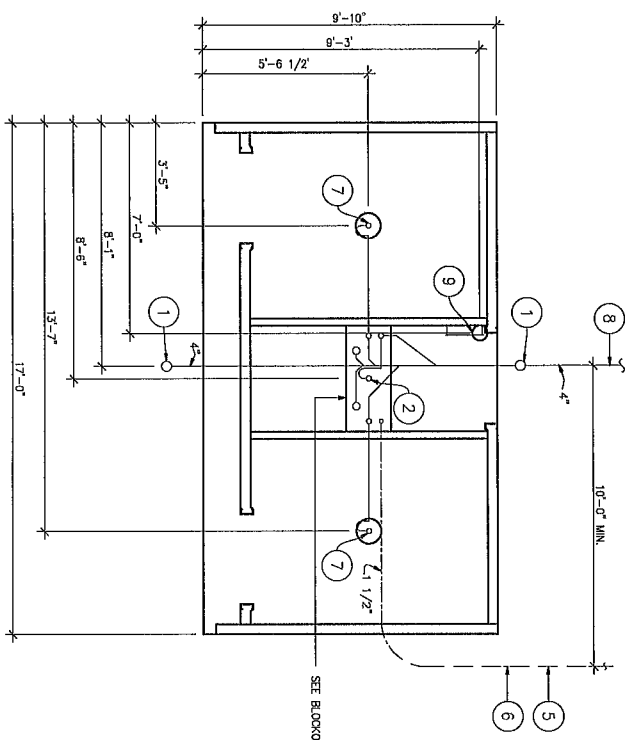
The information contained herein is proprietary and the intellectual property of CXT® Products, Inc. It is to be used only for the project and location specified. No part of this information may be reproduced, stored in a retrieval system, or transmitted, in any form or by any means, electronic, mechanical, photocopying, recording, or by any information storage or retrieval system, without the prior written permission of CXT® Products, Inc. The user of this information assumes all liability for any and all consequences of its use. CXT® Products, Inc. is not responsible for any errors or omissions in this information or for any consequences arising from its use. CXT® Products, Inc. is not responsible for any consequences arising from its use.

DATE	BY	REVISION
02/17/2026	WJ	1

FOUNDATION DETAIL

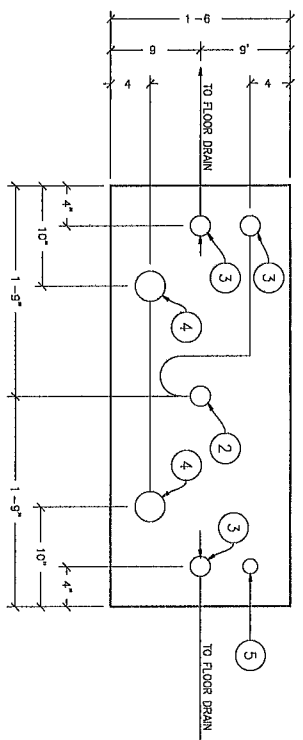
CR-16

SHEET 18 OF 22



FLOOR DRAIN BLOCKOUTS & BELOW FLOOR PIPING

ALL PIPING INDICATED ON THIS SHEET IS NOT BY CXT



BLOCKOUT DETAIL #A

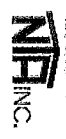
BELOW FLOOR PIPING — KEY NOTES

1. 4" CLEAN OUT TO GRADE.
2. 2" FLOOR DRAIN FIELD INSTALLED TRAP SEAL SYSTEM IF REQUIRED BY AUTHORITY HAVING JURISDICTION. (BLOCKOUT DETAIL #A)
3. 2" VENT PIPES EXTENDED 12" ABOVE FINISHED FLOOR LEVEL. PROVIDE TEST PLUG. (BLOCKOUT DETAIL #A)
4. 3" WASTE PIPE EXTENDED 12" ABOVE FINISHED FLOOR LEVEL. PROVIDE TEST PLUG. (BLOCKOUT DETAIL #A)
5. 1 1/2" TYPE "K" OR "L" ANNEALED "SOFT" COPPER WATER SERVICE EXTENDED 12" ABOVE FINISHED FLOOR LEVEL. PROVIDE CAP AT END. (BLOCKOUT DETAIL #A)
6. MIN. BURY PER LOCAL REQUIREMENTS TO PROTECT AGAINST FREEZING AND DAMAGE.
7. 2" FLOOR DRAIN FIELD INSTALLED TRAP SEAL SYSTEM PROVIDED BY AUTHORITY HAVING JURISDICTION. (UP BLOCK-OUT)
8. 30' MIN. BURY PROVIDE TRACER TAPE.
9. ELECTRICAL STUB UP (6" DIA. BLOCK-OUT)

PIPING LEGEND

- 1 1/2" WATER SERVICE ANNEALED COPPER TYPE "K" OR "L"
- 40 PWC ASTM D2665 TYPE DWV

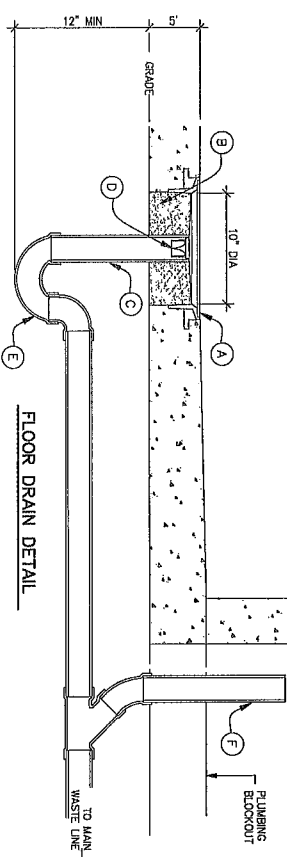
This sheet complies with the requirements of the International Building Code and other applicable codes and is subject to the following office APPROVED BY



TY	Quantity	Unit
1	1	100 SQUARE FEET
2	1	100 SQUARE FEET
3	1	100 SQUARE FEET
4	1	100 SQUARE FEET
5	1	100 SQUARE FEET
6	1	100 SQUARE FEET
7	1	100 SQUARE FEET
8	1	100 SQUARE FEET
9	1	100 SQUARE FEET

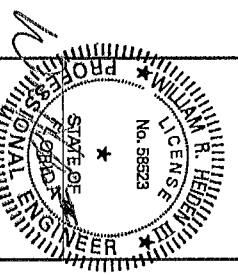
FLOOR DRAIN W/ TRAP SEAL DETAIL

- A. CAST-IN DRAIN HOUSING (10" INSIDE DIM. — PROVIDED BY CXT)
- B. FIELD INSTALLED GROUT SLOPE TO DRAIN (CXT PROVIDED—INSTALLATION NOT BY CXT)
- C. 2" WASTE PIPE — STUB UP 12" ABOVE GRADE (NOT BY CXT)
- D. 2" TRAP SEAL PART # 23300 (CXT PROVIDED—INSTALLATION NOT BY CXT)
- E. F-FLOOR ASSEMBLY (NOT BY CXT)
- F. Z FLOOR DRAIN VENT RISER — STUB UP 12" ABOVE GRADE (NOT BY CXT)



FLOOR DRAIN DETAIL

February 17, 2026



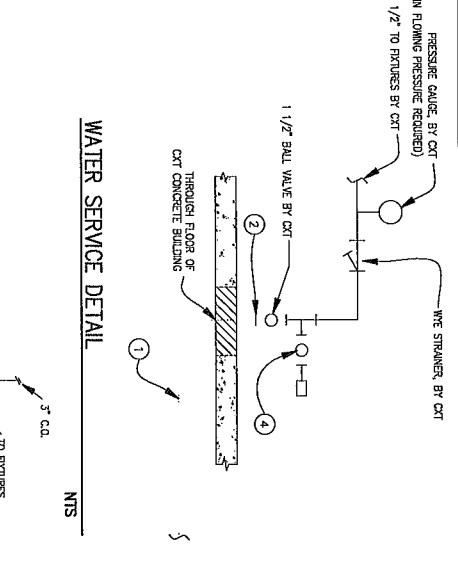
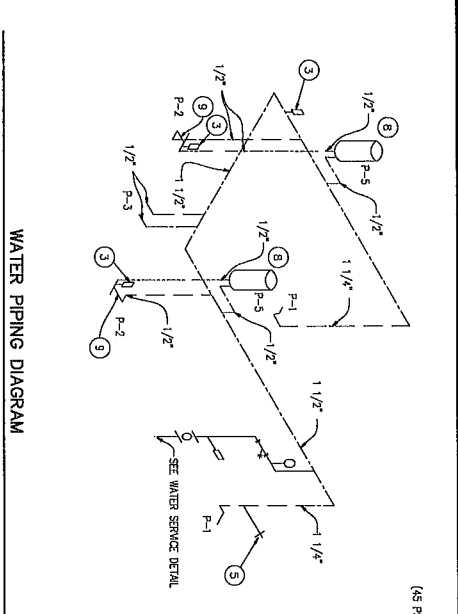
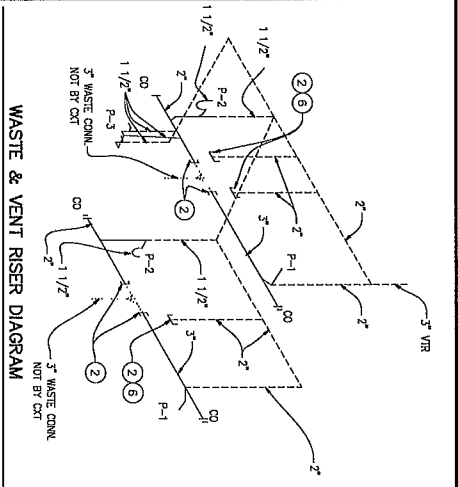
LB Foster
CXT® Products

3075 E. Ringwood Ave. Suite 300, Neosho, MO 64651
303 Newberry Road, Milwaukee, WI 53207
NEOSHO, MO 64651
MILWAUKEE, WI 53207
BUILDING NUMBER CR-1985

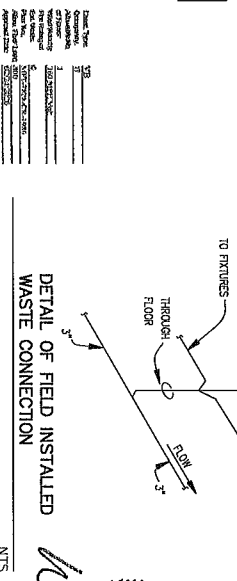
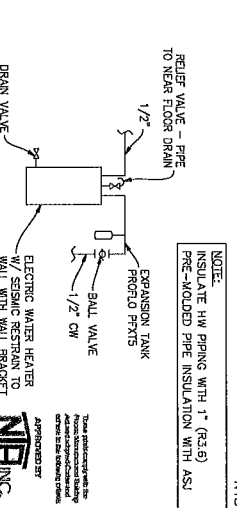
CR-17

NO.	DATE	DESCRIPTION
1	11/22	ISSUED FOR PERMIT
2	11/22	ISSUED FOR PERMIT
3	11/22	ISSUED FOR PERMIT
4	11/22	ISSUED FOR PERMIT
5	11/22	ISSUED FOR PERMIT
6	11/22	ISSUED FOR PERMIT
7	11/22	ISSUED FOR PERMIT
8	11/22	ISSUED FOR PERMIT
9	11/22	ISSUED FOR PERMIT
10	11/22	ISSUED FOR PERMIT
11	11/22	ISSUED FOR PERMIT
12	11/22	ISSUED FOR PERMIT
13	11/22	ISSUED FOR PERMIT
14	11/22	ISSUED FOR PERMIT
15	11/22	ISSUED FOR PERMIT
16	11/22	ISSUED FOR PERMIT
17	11/22	ISSUED FOR PERMIT
18	11/22	ISSUED FOR PERMIT
19	11/22	ISSUED FOR PERMIT
20	11/22	ISSUED FOR PERMIT
21	11/22	ISSUED FOR PERMIT
22	11/22	ISSUED FOR PERMIT

FLOOR DRAIN LOCATIONS AND BELOW FLOOR PIPING



- NOTES:**
- FIELD INSTALLED 1-1/2" ANNEALED TYPE "K" OR "L" SOFT COPPER SERVICE BY OTHERS.
 - TO THIS POINT BY CXT/PLUMBER ASBESTOS SLOUX CHIEF HYDRA-RESISTOR #554-C OR EQUAL.
 - 1/2" AIR QUICK CONNECTION W/ BALL VALVE FOR BLOWING OUT WATER PIPING BY CXT.
 - 3/4" HOSE BIBB W/ SCREW ON VACUUM BREAKERS FOR FLOOR DRAINS.
 - BRONZE SHUT-OFF VALVES ON COLD AND HOT WATER SUPPLY FOR EACH FIXTURE.
 - ELECTRIC WATER HEATER, SEE DIAGRAM ASSE-1070 WATER TEMPERATURE LIMITING DEVICE.



S/M	DESCRIPTION	MANUFACTURER	CXT PART NUMBER	FLUSH V./FAUCET	SUPPLIES	QTY	HW	CW	WASTE	VENT	SUPPLIES / NOTES
P-1	WATER CLOSET (FUSH BUTTON)	AMERICAN STANDARD	2634,101 (W.C.) 5903,100 (W.C. SEAT)	SLOAN "ROYAL" #92-118 L-S "W-4"	SLOAN H133A	2	1-1/4"	1-1/4"	3"	2"	1. OFFSET FLUSH VALVE TAILPIECE PER ADA, RIGHT OR LEFT HAND, AS REQUIRED. 2. MOUNT RIM AT 17" ABOVE FLOOR. 3. USE CLOSET GASKET 3615334 AND Z1203 FINISH KIT
P-2	LAVATORY (FUSH BUTTON)	AMERICAN STANDARD	0255,421 (LAV)	STAMONS SLS-7000		2	1/2"	1/2"	1-1/2"	1-1/2"	1. 1/2" IS COMP. ANG LAV DESCRIP:15AC
P-3	DRINKING FOUNTAIN	HAMS	1119FR			1	-	(2) 1/2"	(2) 1-1/2"	(2) 1-1/2"	1. DUAL HEIGHT COMBINATION W/ CANE SGRIT
P-4											
P-5	WATER HEATER	EMAX	EWT-4			2	1/2"	1/2"	-	-	1. 4 GALLON 120V WALL MOUNTED WATER HEATER. PROVIDE GFCI OUTLET IN CHASE PER MFR RECOMMENDATIONS.
P-6											
P-7	FLOOR DRAIN					1			2"	2"	1. 2" TRAP SEAL PART# P28001 (QTY 3)

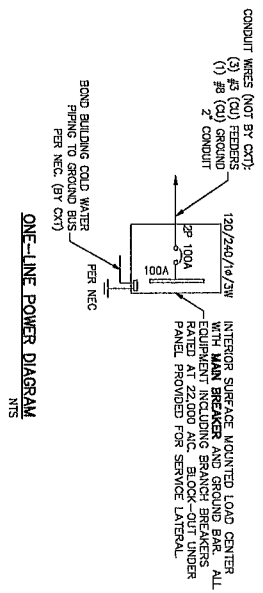
LB Foster
CXT® Products

601 E. Parkings Ave Bldg 200, Naperville, IL 60563
301 N. Broadway, Wheeling, IL 60091
1000 W. 25th St, Chicago, IL 60616

PROJECT: STATE OF ILLINOIS
R. HEIDER
No. 58623
February 17, 2026

ENGINEER

CR-19



GENERAL ELECTRICAL NOTES

1. RECESSED JUNCTION BOXES FOR SINGLE DEVICES SHALL HAVE SINGLE GANG MUD RINGS CAST IN CONCRETE WALLS.
2. ALL RECEPTACLES SHALL BE GFCI PROTECTED BY CIRCUIT BREAKERS OR BY OTHER GFCI RECEPTACLES.
3. ALL CONDUIT SHALL BE 3/4" MINIMUM. EXPOSED CONDUIT SHALL BE EXVT RECESSED SHALL BE PVC.
4. INSTALL ALL WIRING IN CONDUIT OR RELATED ENCLOSURES.
5. ALL ELECTRICAL INSTALLATIONS SHALL MEET THE 2020 NATIONAL ELECTRIC CODE.
6. MINIMUM WIRE SIZE SHALL BE #12 AWG COPPER, THIN INSULATION UNLESS NOTED OTHERWISE.
7. ROUTE ALL CONDUITS IN UTILITY ROOM AT CEILING OR FACE OF WALLS.
8. ELECTRICAL DRAWINGS ARE DIAGNOSTIC IN NATURE AND MAY NOT SHOW EXACT LOCATIONS OF DEVICES, REFER TO WALL PANEL AND OTHER DRAWINGS FOR EXACT LOCATIONS OF J-BOXES, ETC.
9. PROVIDE CIRCUIT BREAKER LOOKOUT TAG FOR EACH EXHAUST FAN, AND HAND DRIVER.



Approved by: [Signature]
 Date: 02/20/2025
 Project: [Project Name]

PANEL SCHEDULE

NO	DESCRIPTION	CIRCUIT	LOAD		CIRCUIT	LOAD	
			TYPE	VA		TYPE	VA
1	PHOTO CONTROLLED EXTERIOR LIGHTS	1P200A L	R	80	1P200A L	R	380
2	PHOTO CONTROLLED EXTERIOR LIGHTS	1P200A N	R	80	1P200A N	R	380
3	RESTROOM #1 LIGHT & FAN	1P200A R	N	28	1P200A R	N	118
4	RESTROOM #2 LIGHT & FAN	1P200A N	N	118	1P200A N	N	118
5	RESTROOM #3 LIGHT & FAN	1P200A R	N	118	1P200A R	N	380
6	RESTROOM #4 LIGHT & FAN	1P200A N	N	118	1P200A N	N	380
7	RESTROOM #5 LIGHT & FAN	1P200A R	N	118	1P200A R	N	380
8	RESTROOM #6 LIGHT & FAN	1P200A N	N	118	1P200A N	N	380
9	RESTROOM #7 LIGHT & FAN	1P200A R	N	118	1P200A R	N	380
10	RESTROOM #8 LIGHT & FAN	1P200A N	N	118	1P200A N	N	380
11	RESTROOM #9 LIGHT & FAN	1P200A R	N	118	1P200A R	N	380
12	RESTROOM #10 LIGHT & FAN	1P200A N	N	118	1P200A N	N	380
13	RESTROOM #11 LIGHT & FAN	1P200A R	N	118	1P200A R	N	380
14	RESTROOM #12 LIGHT & FAN	1P200A N	N	118	1P200A N	N	380
15	RESTROOM #13 LIGHT & FAN	1P200A R	N	118	1P200A R	N	380
16	RESTROOM #14 LIGHT & FAN	1P200A N	N	118	1P200A N	N	380
17	RESTROOM #15 LIGHT & FAN	1P200A R	N	118	1P200A R	N	380
18	RESTROOM #16 LIGHT & FAN	1P200A N	N	118	1P200A N	N	380
19	RESTROOM #17 LIGHT & FAN	1P200A R	N	118	1P200A R	N	380
20	RESTROOM #18 LIGHT & FAN	1P200A N	N	118	1P200A N	N	380

NOTE: MAXIMUM ALLOWABLE AIR IS 22K AMPS. PANEL MODIFICATIONS WILL BE REQUIRED (NOT BY CXT) IF TRANSFORMER CAPACITY EXCEEDS 175 KVA.

LOAD	CONNECTED	CALCULATED
CONTINUOUS	80 KVA	100 VA
NON-CONTINUOUS	280 KVA	280 VA
LARGEST MOTOR	1,757 VA	1,425 VA
TOTAL LOAD	5,957	6,262 VA
		26.1 AMPS

LIGHTING FIXTURE SCHEDULE

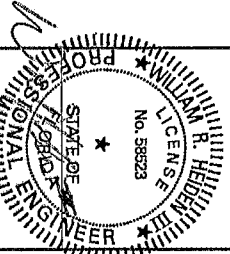
FIXTURE NUMBER	VOLTAGE	WATTS	DESCRIPTION
A	120	25	LUMINAIRE VFRM INTERIOR LIGHT FIXTURE. VFRM 4FT MODUL 25W 40K MVLT GCP WHT WL 2000C SURFACE MOUNTED LED LAMP 4 FT W/4P ROUND LENS LOW TEMPERATURE DRIVER. BUILT IN OCCUPANCY SENSOR CONTROL. W/ ADDITIONAL OCCUPANCY SENSOR FOR FAN CONTROL.
B	120	40	RGB DMR 50V LED LIGHT FIXTURE. SMARTM50/FC. VFRM 4FT MODUL 25W 40K MVLT GCP WHT WL 2000C SURFACE MOUNTED LED LAMP 4 FT W/4P ROUND LENS LOW TEMPERATURE DRIVER. SWITCH ACTIVATED. BUILT IN PHOTOELECTRIC CONTROL.
C	120	25	LUMINAIRE VFRM INTERIOR LIGHT FIXTURE. VFRM 4FT MODUL 25W 40K MVLT GCP WHT WL 2000C SURFACE MOUNTED LED LAMP 4 FT W/4P ROUND LENS LOW TEMPERATURE DRIVER. SWITCH ACTIVATED.

NOTE: THE SOURCE OF EFFICIENCY OF EXTERIOR LIGHTING IS TO BE A MINIMUM OF 45 LUMENS PER WATT.

EXHAUST FAN SCHEDULE

S/N	MFR	MODEL #	CFM	VOLTS	AMPS	WATTS	NOTES
EF-1	FANTECH	RFV-4XL	154	120	0.79	91	1

NOTES:
 FANS LISTED FOR WET LOCATION, CONTROL VIA OCCUPANCY SENSOR. LOCATE OTHER FAN 3'-50" ON EXTERIOR SIDE OF PANEL.



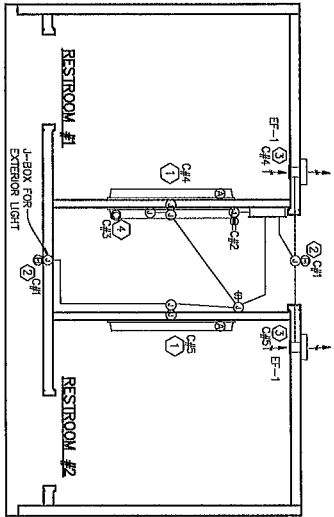
February 17, 2026

LFoster
 CXT® Products

6701 E. Friendship Ave, P.O. Box 200, Kenosha, WI 53140
 2601 West Liberty, Milwaukee, WI 53207
 200 West Liberty, Milwaukee, WI 53207

CORTIZ
 BUILDING NUMBER CR-1985

CR-20
 SHEET 20 OF 22
 ELECTRICAL NOTES & SCHEDULES

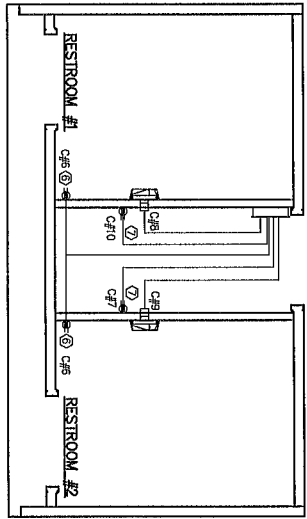


LIGHTING & EXHAUST FAN PLAN
N.T.S.

These plans comply with the requirements of the International Building Code and the International Electrical Code and adhere to the following policies:

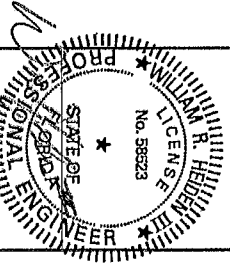
APPROVED BY
NIP INC.

- KEY NOTES**
- ① OCCUPANCY SENSOR CONTROLLED LIGHTS AND EXHAUST FANS.
 - ② LIGHT FIXTURE TO BE CONTROLLED BY INTERNAL PHOTOCELL.
 - ③ CIRCUIT AS NEEDED FOR THE LOAD OF THE EXHAUST FAN, WIRE THRU OCCUPANCY SENSOR.
 - ④ CHASE LIGHT TO BE SWITCH ACTIVATED.
 - ⑤ NOT USED.
 - ⑥ GFCI OUTLET FOR RESTROOMS.
 - ⑦ GFCI OUTLET FOR WATER HEATER.



WATER HEATER, RESTROOM RECEPTACLE, & HAND DRYER PLAN
N.T.S.

- SYMBOLS LEGEND**
- ☐ GFCI RECEPTACLE
 - ⊕ SWITCH
 - ⊖ JUNCTION BOX
 - ⊙ C#1X CIRCUIT NUMBER
 - ⊙ ELECTRIC PANEL
 - ⊙ WALL MOUNTED LED FIXTURE
 - ⊙ EXTENSION LIGHT FIXTURE
 - ⊙ EXHAUST FAN (EF--1)
 - ⊙ SURFACE MOUNTED CONDUIT
 - ⊙ CONCEALED CONDUIT
 - ⊙ HAND DRYER



February 17, 2026

LB Foster
CXP Products

6701 E. Flamingo Ave #249-200, Naples, FL 34109
305.963.7700
www.lbfoster.com

CORTIZ
BUILDING NUMBER CR-1985

The information contained herein is proprietary and the user of this plan is to be limited to the project for which it was prepared. It is not to be used for any other project without the written consent of LB Foster. The user of this plan is to be limited to the project for which it was prepared. It is not to be used for any other project without the written consent of LB Foster.

DATE	DESCRIPTION	BY	CHKD
1/15/2025	1. NEW WIRE CONNECTIONS	J. KERR	8/21/2025
1/15/2025	2. NEW WIRE CONNECTIONS	J. KERR	8/21/2025
1/15/2025	3. NEW WIRE CONNECTIONS	J. KERR	8/21/2025
1/15/2025	4. NEW WIRE CONNECTIONS	J. KERR	8/21/2025
1/15/2025	5. NEW WIRE CONNECTIONS	J. KERR	8/21/2025
1/15/2025	6. NEW WIRE CONNECTIONS	J. KERR	8/21/2025
1/15/2025	7. NEW WIRE CONNECTIONS	J. KERR	8/21/2025
1/15/2025	8. NEW WIRE CONNECTIONS	J. KERR	8/21/2025
1/15/2025	9. NEW WIRE CONNECTIONS	J. KERR	8/21/2025
1/15/2025	10. NEW WIRE CONNECTIONS	J. KERR	8/21/2025
1/15/2025	11. NEW WIRE CONNECTIONS	J. KERR	8/21/2025
1/15/2025	12. NEW WIRE CONNECTIONS	J. KERR	8/21/2025
1/15/2025	13. NEW WIRE CONNECTIONS	J. KERR	8/21/2025
1/15/2025	14. NEW WIRE CONNECTIONS	J. KERR	8/21/2025
1/15/2025	15. NEW WIRE CONNECTIONS	J. KERR	8/21/2025
1/15/2025	16. NEW WIRE CONNECTIONS	J. KERR	8/21/2025
1/15/2025	17. NEW WIRE CONNECTIONS	J. KERR	8/21/2025
1/15/2025	18. NEW WIRE CONNECTIONS	J. KERR	8/21/2025
1/15/2025	19. NEW WIRE CONNECTIONS	J. KERR	8/21/2025
1/15/2025	20. NEW WIRE CONNECTIONS	J. KERR	8/21/2025
1/15/2025	21. NEW WIRE CONNECTIONS	J. KERR	8/21/2025
1/15/2025	22. NEW WIRE CONNECTIONS	J. KERR	8/21/2025

CR-21

