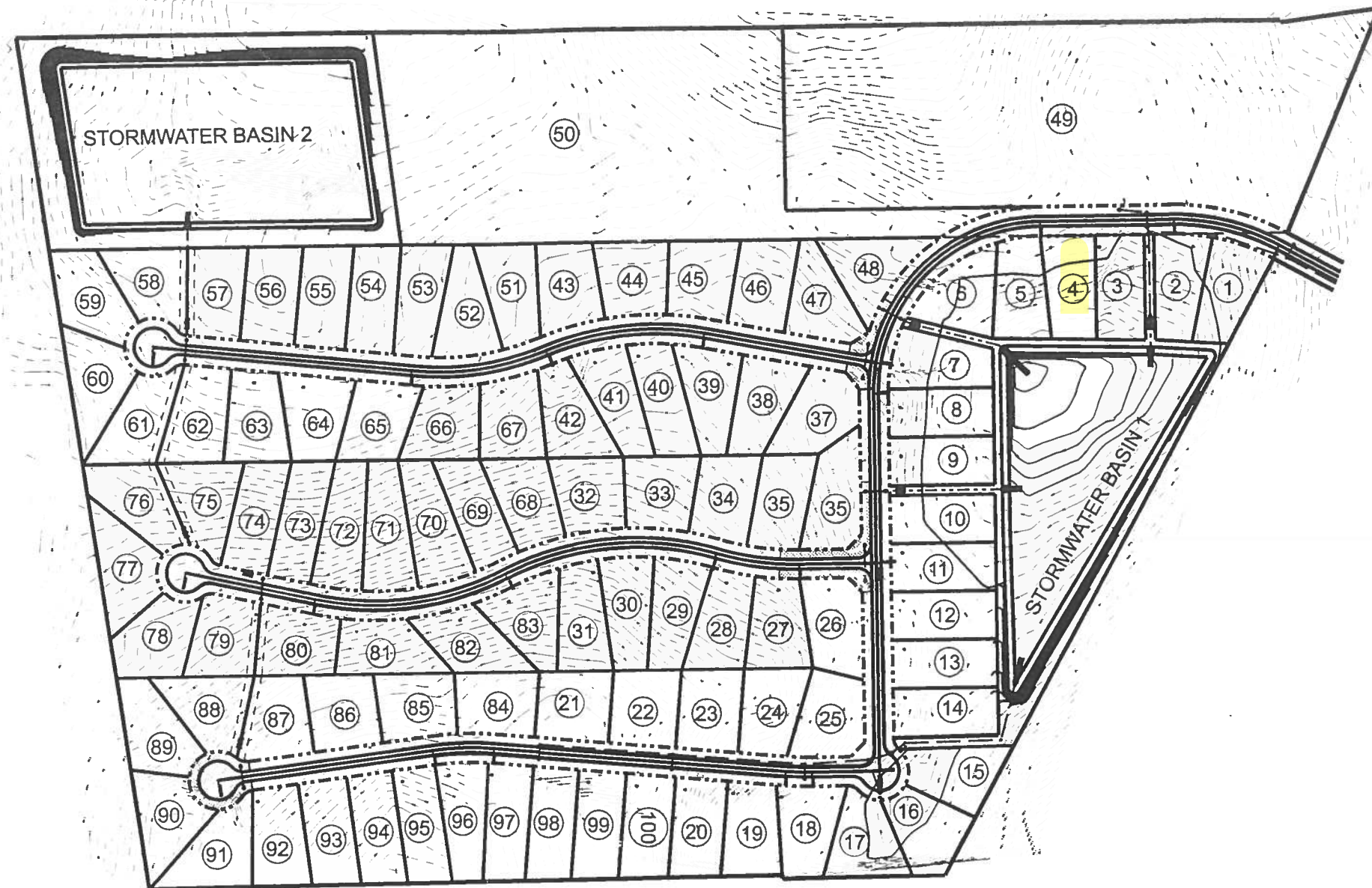
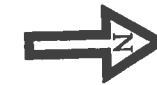


LOT NUMBER	MINIMUM FINISH FLOOR ELEVATION	LOT NUMBER	MINIMUM FINISH FLOOR ELEVATION
1	103	51	109
2	103	52	107
3	103	53	105
4	103	54	103
5	103	55	102
6	103	56	102
7	103	57	102
8	103	58	104
9	103	59	107
10	103	60	111
11	103	61	110
12	106	62	107
13	106	63	107
14	106	64	107
15	107	65	107
16	107	66	109
17	107	67	112
18	110	68	120
19	115	69	120
20	125	70	118
21	147	71	116
22	143	72	115
23	137	73	113
24	130	74	113
25	115	75	113
26	115	76	115
27	125	77	120
28	127	78	121
29	129	79	125
30	132	80	132
31	135	81	138
32	123	82	137
33	123	83	137
34	119	84	146
35	111	85	144
36	112	86	143
37	113	87	140
38	118	88	133
39	117	89	130
40	116	90	141
41	115	91	146
42	115	92	49
43	111	93	152
44	111	94	155
45	111	95	155
46	111	96	153
47	108	97	152
48	105	98	151
49	115	99	150
50	110	100	139



NOTES:

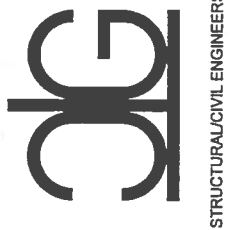
1. THE MINIMUM FINISH FLOOR ELEVATION ON THIS SHEET MAY BE CHANGED TO EITHER:
 - A. 1 FOOT ABOVE THE ADJACENT ROAD OR,
 - B. 8 INCHES ABOVE ADJACENT, NATURAL GROUND
 IF DETERMINED BY A REGISTERED PROFESSIONAL ENGINEER THAT CHANGING THE STATED MINIMUM FINISH FLOOR ELEVATION WILL NOT INCREASE FLOOD HAZARDS.

2. ELEVATIONS ARE BASED OFF TOPOGRAPHICAL SURVEY PERFORMED BY J. SHERMAN FRIER AND ASSOCIATES. JSFA SHOULD BE CONTACTED FOR BENCHMARK INFORMATION. (PHONE # 386.362.4629)

REVISION NOTES

DATE

P.O. Box 187
 130 West Howard Street
 Live Oak FL, 32064
 Phone: (386) 362-3678
 Fax: (386) 362-6133



MINIMUM FINISH FLOOR ELEVATIONS

PROJECT NUMBER
PF03-116

SHEET
43