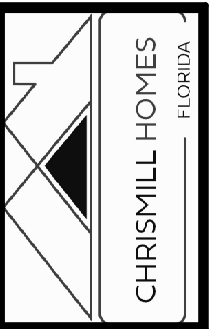


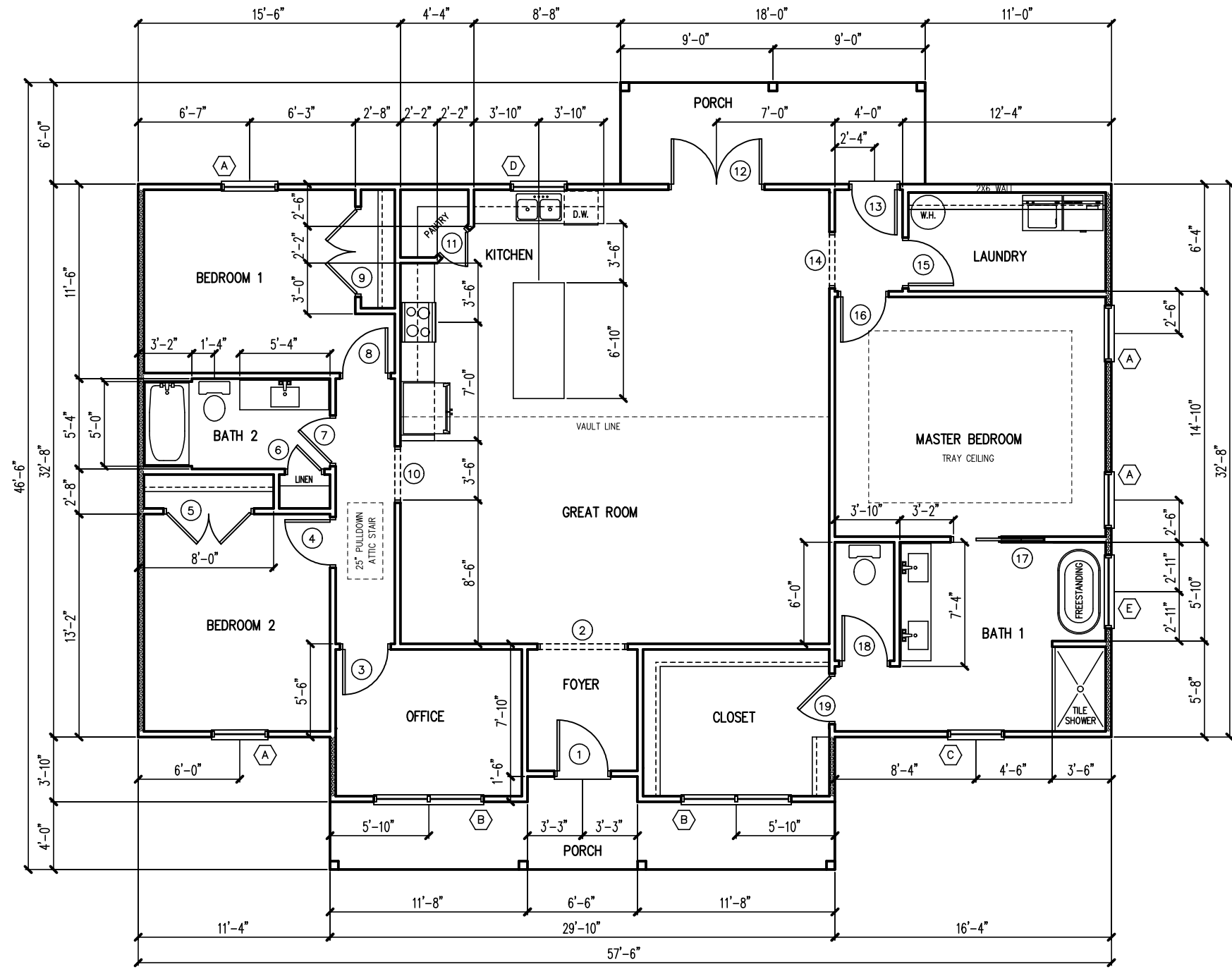
SQUARE FOOTAGE	1983 S.F.	237 S.F.	2220 S.F.
HEATED			
PORCH			
TOTAL			

Josh Wilson & Nicole Dempsey  
 White Springs, Florida



# FLOOR PLAN

SCALE: 1/8" = 1'-0"



HATCHED AREAS INDICATE EXTERNAL SHEAR WALLS

DOOR SCHEDULE			
MARK	WIDTH	HEIGHT	REMARKS
1	3'-0"	6'-8"	SOLID CORE EXTERIOR DOOR
2	5'-0"	6'-8"	CASED OPENING
3	2'-8"	6'-8"	HOLLOW CORE DOOR
4	2'-8"	6'-8"	HOLLOW CORE DOOR
5	5'-0"	6'-8"	BI-HINGE DOOR UNIT
6	2'-0"	6'-8"	HOLLOW CORE DOOR
7	2'-8"	6'-8"	HOLLOW CORE DOOR
8	2'-8"	6'-8"	HOLLOW CORE DOOR
9	5'-0"	6'-8"	BI-HINGE DOOR UNIT
10	3'-0"	6'-8"	CASED OPENING
11	2'-0"	6'-8"	HOLLOW CORE DOOR
12	5'-4"	6'-8"	DOUBLE 2-8 METAL EXTERIOR DOORS
13	2'-8"	6'-8"	METAL EXTERIOR DOOR
14	3'-0"	6'-8"	CASED OPENING
15	2'-8"	6'-8"	HOLLOW CORE DOOR
16	2'-8"	6'-8"	HOLLOW CORE DOOR
17	2'-8"	6'-8"	POCKET DOOR
18	2'-8"	6'-8"	HOLLOW CORE DOOR
19	2'-8"	6'-8"	HOLLOW CORE DOOR

WINDOW SCHEDULE					
MARK	WIDTH	HEIGHT	REMARKS	HEAD HEIGHT	EGRESS
A	3'-0"	5'-2"	SINGLE UNIT-SINGLE HUNG	6'-8"	***
B	3'-0"	5'-2"	DOUBLE UNIT-SINGLE HUNG	6'-8"	***
C	3'-0"	5'-2"	SINGLE HUNG-TEMPERED	6'-8"	***
D	3'-0"	3'-0"	SINGLE UNIT-SINGLE HUNG	6'-8"	
E	4'-0"	4'-0"	PICTURE UNIT-TEMPERED	6'-8"	
GABLE	3'-0"	3'-0"	PICTURE UNIT		

\*\*\* MEETS FBCR 310.21 NET CLEAR OPENING REQUIREMENTS  
 WINDOWS AND DOORS SHALL BE LABELED TO BE IN ACCORDANCE WITH CURRENT WIND LOAD PRESSURE OF -40 PSF

These plans comply with 2023 Florida Building Code, 120 mph wind speed (3 sec. gust)

John K. Gentry, P.E.#16990  
 P.O. Box 1034  
 Perry, FL 32348  
 (850) 672-0145