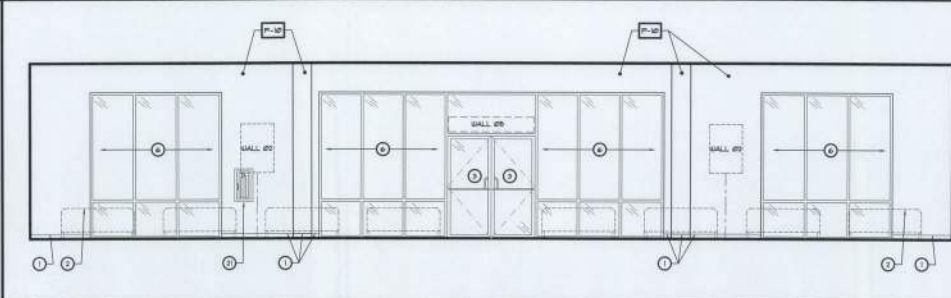


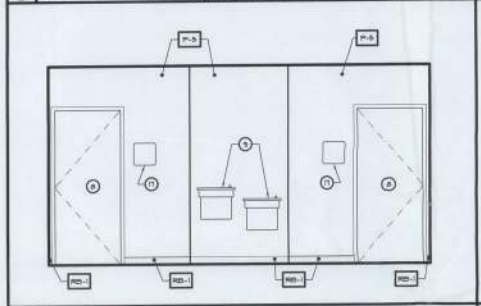
5 MEN / WOMEN  
SCALE: 3/8" = 1'-0"  
REF: 100, 100

6 MEN / WOMEN  
SCALE: 3/8" = 1'-0"  
REF: 100, 100

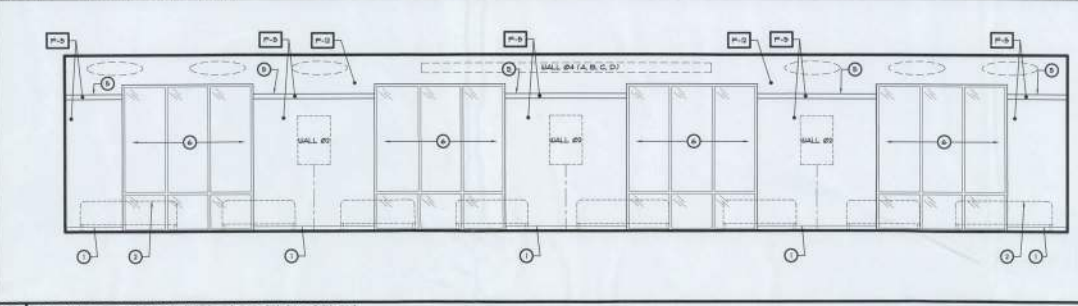
7 MEN / WOMEN  
SCALE: 3/8" = 1'-0"  
REF: 100, 100



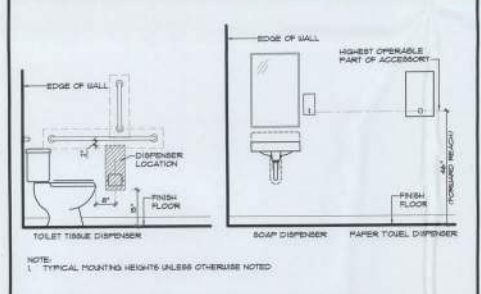
8 SHOWROOM NORTH INTERIOR ELEVATION  
SCALE: 1/4" = 1'-0"  
REF: 100



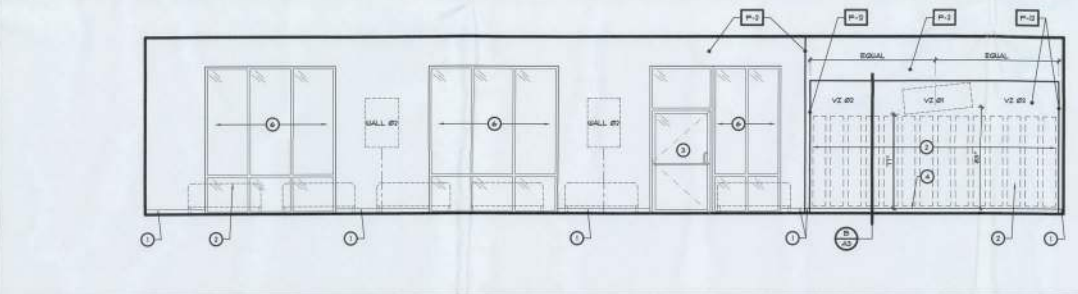
9 VESTIBULE  
SCALE: 3/8" = 1'-0"  
REF: 100



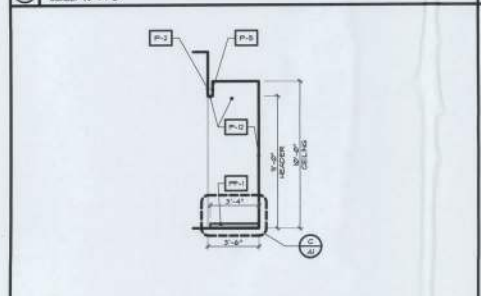
10 SHOWROOM EAST INTERIOR ELEVATION  
SCALE: 1/4" = 1'-0"  
REF: 100



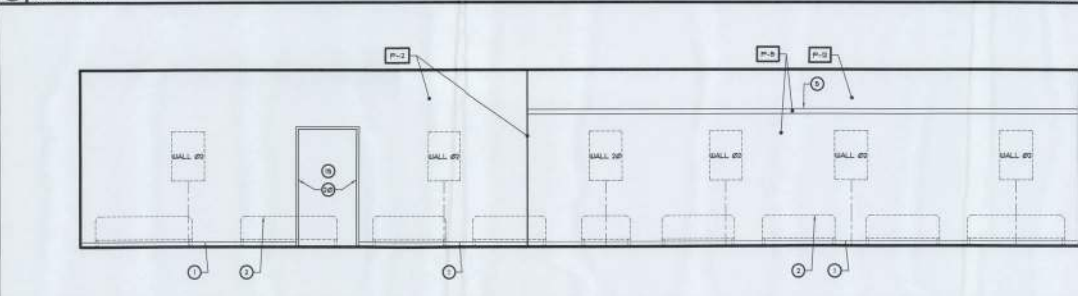
11 TYPICAL MOUNTING HEIGHTS  
SCALE: 1/2" = 1'-0"



12 SHOWROOM SOUTH INTERIOR ELEVATION  
SCALE: 1/4" = 1'-0"  
REF: 100



13 PLATFORM SECTION  
SCALE: 1/4" = 1'-0"



14 SHOWROOM WEST INTERIOR ELEVATION  
SCALE: 1/4" = 1'-0"  
REF: 100

**KEYED NOTES**

- 1. BASEBOARD - SEE FINISH SCHEDULE
- 2. MATTRESS - TRIMM SUPPLIED
- 3. EXISTING STOREFRONT DOOR SYSTEM
- 4. VALUE ZONE PLATFORM - SEE DETAIL C41
- 5. TRIMBOARD - SEE DETAIL A41
- 6. EXISTING STOREFRONT WINDOW SYSTEM
- 7. EXISTING WALL MOUNTED CHANNEL FRAMED TERRAZZO
- 8. EXISTING DOOR SYSTEM
- 9. EXISTING ELECTRIC H-O DRINKING FOUNTAIN
- 10. EXISTING H-C WATER CLOSET
- 11. EXISTING H-C ACCESSIBLE LAVATORY
- 12. EXISTING GRAB BARS
- 13. EXISTING WALL MOUNTED SOAP DISPENSER
- 14. EXISTING SURFACE MOUNTED PAPER TOWEL DISPENSER
- 15. EXISTING SURFACE MOUNTED TOILET TISSUE DISPENSER
- 16. EXISTING PIPE INSULATION KIT
- 17. EXISTING H-C SIGN
- 18. PROVIDE FINISH OVER GLEIST FRONT TOP OF FLOOR FINISH TO 4'-6" ABOVE FINISH LITER OF FLOOR FINISH
- 19. OPEN BEYOND
- 20. WOOD CASING OPENINGS - SEE DETAIL B41
- 21. EXISTING FIRE EXTINGUISHER CABINET

**TOILET ACCESSORIES**

ACCESSORY	SPECIFICATION
80% RECESSED TOILET TISSUE DISPENSER	DOBROCK D-441
SURFACE MOUNTED TOILET TISSUE DISPENSER	DOBROCK D-448
80% RECESSED PAPER TOWEL DISPENSER	DOBROCK D-305
SURFACE MOUNTED PAPER TOWEL DISPENSER	DOBROCK D-340
36" GRAB BAR	DOBROCK D-6806 X 36 BATH FINISH WITH SNAP FLANGE
42" GRAB BAR	DOBROCK D-6806 X 42 BATH FINISH WITH SNAP FLANGE
WALL MOUNTED SOAP DISPENSER	DOBROCK D-88
COUNTER MOUNTED SOAP DISPENSER	DOBROCK D-802
WALL MOUNTED TERROR	DOBROCK D-94 950
SURFACE MOUNTED TOUCH BUTTON HAND DRYER	DOBROCK D-701 700
RECESSED PETRINE NAPKIN DISPENSER	DOBROCK D-350
SURFACE MOUNTED PETRINE NAPKIN DISPENSER	DOBROCK D-370
RECESSED DISPENSER TOILET-BEAT-COVER	DOBROCK D-380
RECESSED FACIAL TISSUE DISPENSER	DOBROCK D-390

**GENERAL NOTES**

1. SEE SHEET C01 FOR ALL FINISH SCHEDULES AND MATERIALS.
2. CONTRACTOR TO COORDINATE AND VERIFY THE FINAL LOCATION FOR ALL GRAPHICS WITH TRIMM.
3. SEE SHEET A03 FOR GRAPHICS PLAN AND SCHEDULE.
4. FOR TYPICAL TOILET ACCESSORIES MOUNTING HEIGHTS, SEE "11" THIS SHEET.
5. SOME KEYED NOTES AND ACCESSORIES DO NOT APPLY UNLESS REFERENCED IN THIS PROJECT.

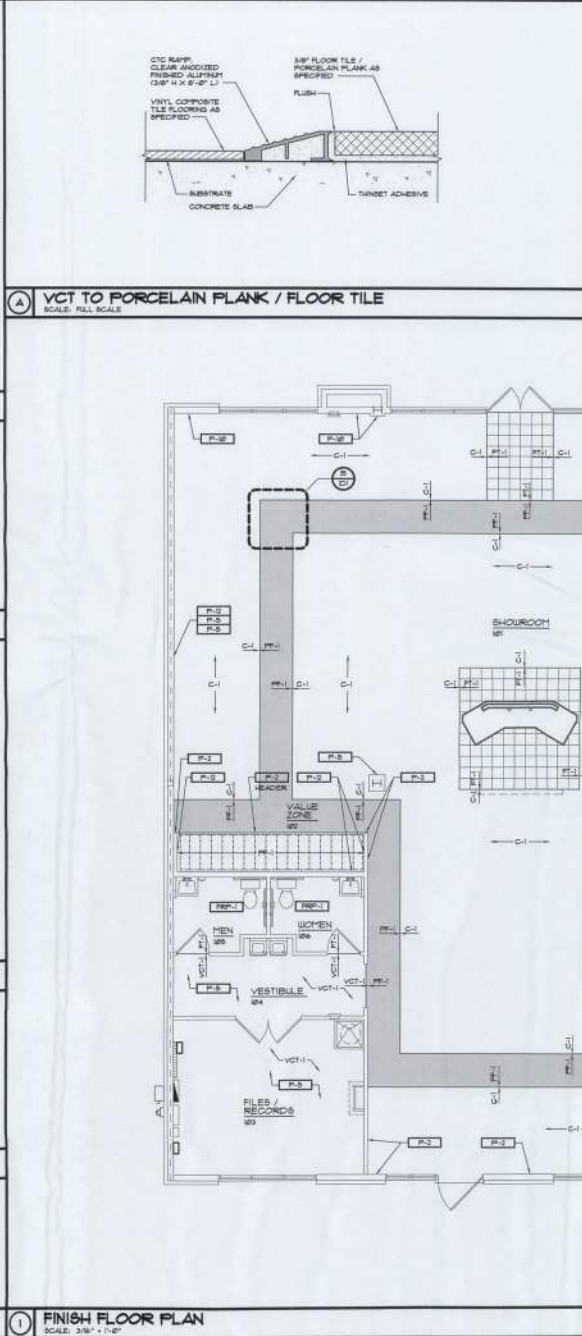
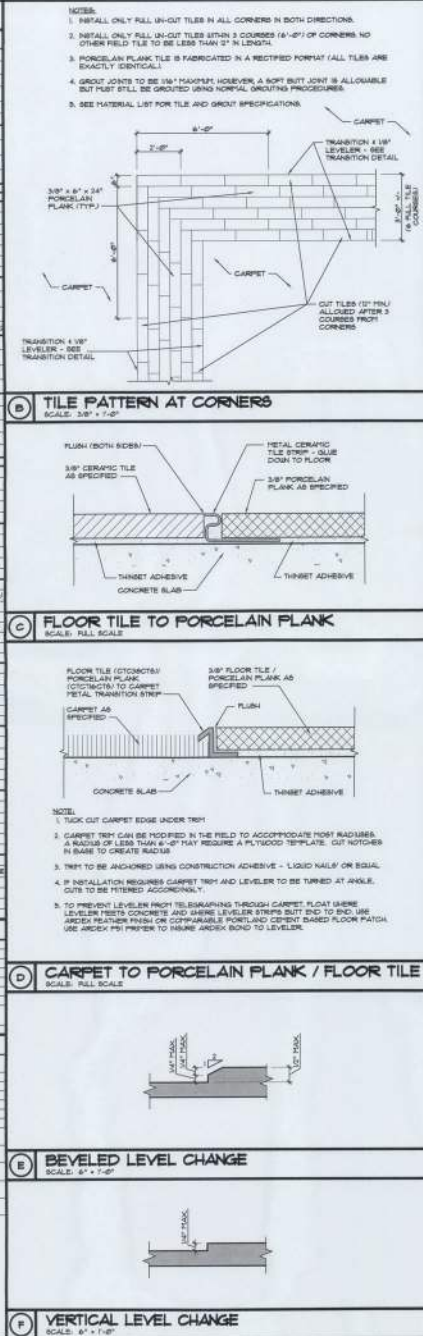
REVISIONS	BY

**OLIVERI ARCHITECTS**  
 ARCHITECTS  
 1000 N. GULF BLVD., SUITE 100  
 TAMPA, FL 33602  
 TEL: 813.288.1111  
 FAX: 813.288.1112  
 WWW.OLIVERIARCHITECTS.COM

Interior Build-Out for  
**MATTRESS FIRM**  
 Lake City  
 2434 U.S. Hwy 90 West  
 Lake City, Florida 32055

Date: 04. 02. 14  
 Scale: AS NOTED  
 Project Mgr: DM  
 Drawn: TC  
 Job: 13-89  
 Sheet  
**A3**

FLOOR BASE TILE		PAINT	
<b>NOTES:</b> 1. INSTALL ONLY FULL IN-OUT TILES IN ALL CORNERS IN BOTH DIRECTIONS. 2. INSTALL ONLY FULL IN-OUT TILES WITHIN 3 COURSES (1'-0" OF) OF CORNERS. NO OTHER FLOOR TILE TO BE LESS THAN 2" IN LENGTH. 3. PORCELAIN PLANK TILE IS FABRICATED IN A RECTIFIED FORMAT (ALL TILES ARE EXACTLY IDENTICAL). 4. GROUT JOINTS TO BE 1/8" MAXIMUM HOWEVER A BONY BUT JOINT IS ALLOWABLE BUT MUST STILL BE GROUNDED USING NORMAL GROUTING PROCEDURES. 5. SEE MATERIAL LIST FOR TILE AND GROUT SPECIFICATIONS.	<b>NOTES:</b> 1. TACK OUT CARPET EDGE UNDER TRIM. 2. CARPET TRIM CAN BE MODIFIED IN THE FIELD TO ACCOMMODATE ROOF RADIIUS. A RADIUS OF LESS THAN 1'-0" MAY REQUIRE A PLYWOOD TEMPLATE. USE NOTICES IN DRAWING TO CREATE RADIUS. 3. TRIM TO BE ANCHORED USING CONSTRUCTION ADHESIVE - LIQUID NAILS OR EQUAL. 4. IF INSTALLATION REQUIRES CARPET TRIM AND LEVELER TO BE TURNED AT ANGLE, CUTS TO BE FITTED ACCORDINGLY. 5. TO PREVENT LEVELER FROM RELAXING/SHIFTS THROUGH CARPET, FLOAT WHERE LEVELER RESTS CONCRETE AND SHIMS LEVELER STRIPS BUT END TO END USE ARDEX FLEXIBLE FINISH OR COMPATIBLE PORTLAND CEMENT BASED FLOOR PATCH. USE ARDEX F91 PREFERRED TO INSURE ARDEX BOND TO LEVELER.		
<b>NOTES:</b> 1. TACK OUT CARPET EDGE UNDER TRIM. 2. CARPET TRIM CAN BE MODIFIED IN THE FIELD TO ACCOMMODATE ROOF RADIIUS. A RADIUS OF LESS THAN 1'-0" MAY REQUIRE A PLYWOOD TEMPLATE. USE NOTICES IN DRAWING TO CREATE RADIUS. 3. TRIM TO BE ANCHORED USING CONSTRUCTION ADHESIVE - LIQUID NAILS OR EQUAL. 4. IF INSTALLATION REQUIRES CARPET TRIM AND LEVELER TO BE TURNED AT ANGLE, CUTS TO BE FITTED ACCORDINGLY. 5. TO PREVENT LEVELER FROM RELAXING/SHIFTS THROUGH CARPET, FLOAT WHERE LEVELER RESTS CONCRETE AND SHIMS LEVELER STRIPS BUT END TO END USE ARDEX FLEXIBLE FINISH OR COMPATIBLE PORTLAND CEMENT BASED FLOOR PATCH. USE ARDEX F91 PREFERRED TO INSURE ARDEX BOND TO LEVELER.	<b>NOTES:</b> 1. TACK OUT CARPET EDGE UNDER TRIM. 2. CARPET TRIM CAN BE MODIFIED IN THE FIELD TO ACCOMMODATE ROOF RADIIUS. A RADIUS OF LESS THAN 1'-0" MAY REQUIRE A PLYWOOD TEMPLATE. USE NOTICES IN DRAWING TO CREATE RADIUS. 3. TRIM TO BE ANCHORED USING CONSTRUCTION ADHESIVE - LIQUID NAILS OR EQUAL. 4. IF INSTALLATION REQUIRES CARPET TRIM AND LEVELER TO BE TURNED AT ANGLE, CUTS TO BE FITTED ACCORDINGLY. 5. TO PREVENT LEVELER FROM RELAXING/SHIFTS THROUGH CARPET, FLOAT WHERE LEVELER RESTS CONCRETE AND SHIMS LEVELER STRIPS BUT END TO END USE ARDEX FLEXIBLE FINISH OR COMPATIBLE PORTLAND CEMENT BASED FLOOR PATCH. USE ARDEX F91 PREFERRED TO INSURE ARDEX BOND TO LEVELER.		
<b>NOTES:</b> 1. TACK OUT CARPET EDGE UNDER TRIM. 2. CARPET TRIM CAN BE MODIFIED IN THE FIELD TO ACCOMMODATE ROOF RADIIUS. A RADIUS OF LESS THAN 1'-0" MAY REQUIRE A PLYWOOD TEMPLATE. USE NOTICES IN DRAWING TO CREATE RADIUS. 3. TRIM TO BE ANCHORED USING CONSTRUCTION ADHESIVE - LIQUID NAILS OR EQUAL. 4. IF INSTALLATION REQUIRES CARPET TRIM AND LEVELER TO BE TURNED AT ANGLE, CUTS TO BE FITTED ACCORDINGLY. 5. TO PREVENT LEVELER FROM RELAXING/SHIFTS THROUGH CARPET, FLOAT WHERE LEVELER RESTS CONCRETE AND SHIMS LEVELER STRIPS BUT END TO END USE ARDEX FLEXIBLE FINISH OR COMPATIBLE PORTLAND CEMENT BASED FLOOR PATCH. USE ARDEX F91 PREFERRED TO INSURE ARDEX BOND TO LEVELER.	<b>NOTES:</b> 1. TACK OUT CARPET EDGE UNDER TRIM. 2. CARPET TRIM CAN BE MODIFIED IN THE FIELD TO ACCOMMODATE ROOF RADIIUS. A RADIUS OF LESS THAN 1'-0" MAY REQUIRE A PLYWOOD TEMPLATE. USE NOTICES IN DRAWING TO CREATE RADIUS. 3. TRIM TO BE ANCHORED USING CONSTRUCTION ADHESIVE - LIQUID NAILS OR EQUAL. 4. IF INSTALLATION REQUIRES CARPET TRIM AND LEVELER TO BE TURNED AT ANGLE, CUTS TO BE FITTED ACCORDINGLY. 5. TO PREVENT LEVELER FROM RELAXING/SHIFTS THROUGH CARPET, FLOAT WHERE LEVELER RESTS CONCRETE AND SHIMS LEVELER STRIPS BUT END TO END USE ARDEX FLEXIBLE FINISH OR COMPATIBLE PORTLAND CEMENT BASED FLOOR PATCH. USE ARDEX F91 PREFERRED TO INSURE ARDEX BOND TO LEVELER.		



ROOM FINISH SCHEDULE											
NO.	ROOM	BASE	FLOOR	WALLS				REMARKS	NO.		
				N	S	E	W				
101	SHOWROOM	RR-1	SEE PLAN	SEE A3	SEE A3	SEE A3	SEE A3		101		
102	VALUEZONE	NA	FF-1	P-8	P-12	P-12	P-12		102		
103	FILES / RECORDS	RR-1	VCT-1	P-8	P-8	P-8	P-8		103		
104	VESTIBULE	RR-1	VCT-1	P-8	P-8	P-8	P-8		104		
105	MEN	NA	NA	NA	NA	NA	NA	1.2	105		
106	WOMEN	NA	NA	NA	NA	NA	NA	1.2	106		

1. PROVIDE FRP-1 TO 4'-0\"/>

2. EXISTING FRP-1, FR-1 AND FR-9 ABOVE FIELD VERIFY I PROVIDE IF NOT PRESENT.

**GENERAL NOTES**

1. ALL FLOOR AND GROUND SURFACES SHALL COMPLY WITH SECTION 305 OF THE SSPB STANDARDS FOR ACCESSIBLE DESIGN.

2. ALL CHANGES IN LEVELS SHALL COMPLY WITH SECTION 305 OF THE SSPB STANDARDS FOR ACCESSIBLE DESIGN.

3. FLOOR TRANSITIONS TO BE VERIFIED BY TENANT, CONTRACTOR TO COORDINATE PRIOR TO CONSTRUCTION.

4. SEE INTERIOR ELEVATIONS SHEET AS FOR WALL FINISHES.

5. CONTRACTOR TO COORDINATE AND VERIFY ALL FINAL COLOR AND FINISHES WITH MATRESS FIRM PROJECT MANAGER PRIOR TO ORDERING.

**REVISIONS**

NO.	DESCRIPTION	DATE

**BY**

**OLIVERI ARCHITECTS**  
 ARCHITECTS  
 Member of the American Institute of Architects  
 10000 W. US HWY 90, SUITE 100  
 LAKE CITY, FLORIDA 32055  
 PHONE 407.371.1205 FAX 407.371.1623  
 WWW.OLIVERIARCHITECTS.COM

**INTERIOR BUILD-OUT FOR MATRESS FIRM**  
 Lake City, Florida 32055  
 2434 U.S. Hwy 90 West  
 Lake City, Florida 32055

Date: 04. 02. 14  
 Scale: AS NOTED  
 Project Mgr: DM  
 Drawn: TC  
 Job: 13-89  
 Sheet  
**ID1**

















