

ROOF VENT CALCULATION

FORMULA

1 SQUARE INCH FOR EVERY 300 SQUARE INCHES OF CEILING
 144 SQUARE INCHES = 1 SQUARE FOOT
 BUILDING CEILING (SQ FT) X 1.44 = BUILDING (SQ IN)
 BUILDING (SQ IN) DIV 300 = SQ IN OF VENT REQUIRED
 SQ IN OF VENT REQUIRED (2) = 50% AT HIGH AND 50% AT LOW

PER FBC SECTION R603.2, 40% MIN, BUT NOT MORE THAN 50% OF VENTILATION MUST BE PROVIDED BY VENTILATORS LOCATED A MIN 3'-0" ABOVE EAVE

BASE OF CALCULATION

(A) OFF ROOF VENTS - STAMPED W/ 30 SQ IN INFAN PER LINEAL FT
 (B) SOFFIT VENTS - 1/8" (1/8" FULL VENT PERFORATED BY 3/16" SQ IN INFAN) PER LINEAL FT

CALCULATED LINEAL FOOT OF SOFFIT VENT SHALL NOT INCLUDE NON-VENTED TYPE RATED SOFFIT LOCATED LESS THAN 3' FROM PROPERTY LINE.

AREA (SQ FT)	REQUIRED (SQ IN)	PROVIDED (SQ IN)	FROM (SQ IN)	TOTAL (SQ IN)	LOW (SQ IN)

SOFFIT TABLE VENT SPECS

Double 5" perforated soffits have a 6.20 sq. inch, foot rating
 Triple 4" center vent soffits has a 1.55 sq. inch, foot rating
 Triple 4" full vent soffits has a 5.67 sq. inch, foot rating
 Triple 4" basketweave full vent has a 14.34 sq. inch, foot rating
 Triple 4" center vent soffits has a 4.79 sq. inch, foot rating
 Double hidden vent soffits has 2.66 sq. inch, foot rating
 Triple 3-1/8" hidden vent soffits has a 9.19 sq. inch, foot rating

NOTE
 Simpson Strong-Tie Co. Strong-Drive SDWC TRUSS Screws may be used for uplift connection in lieu of straps. Strong-Drive SDWC TRUSS Screws to be installed per manufacturer's specifications.

Simpson Strong-Tie Co. Titen HD Heavy-Duty Screw Anchors 5/8" x 8", maximum spacing of 42" o.c., may be used in lieu of 5/8"x10" anchor bolts with 3"x3"x1/8" washer. Titen HD Heavy-Duty Screw Anchors shall be installed per manufacturer's specifications.

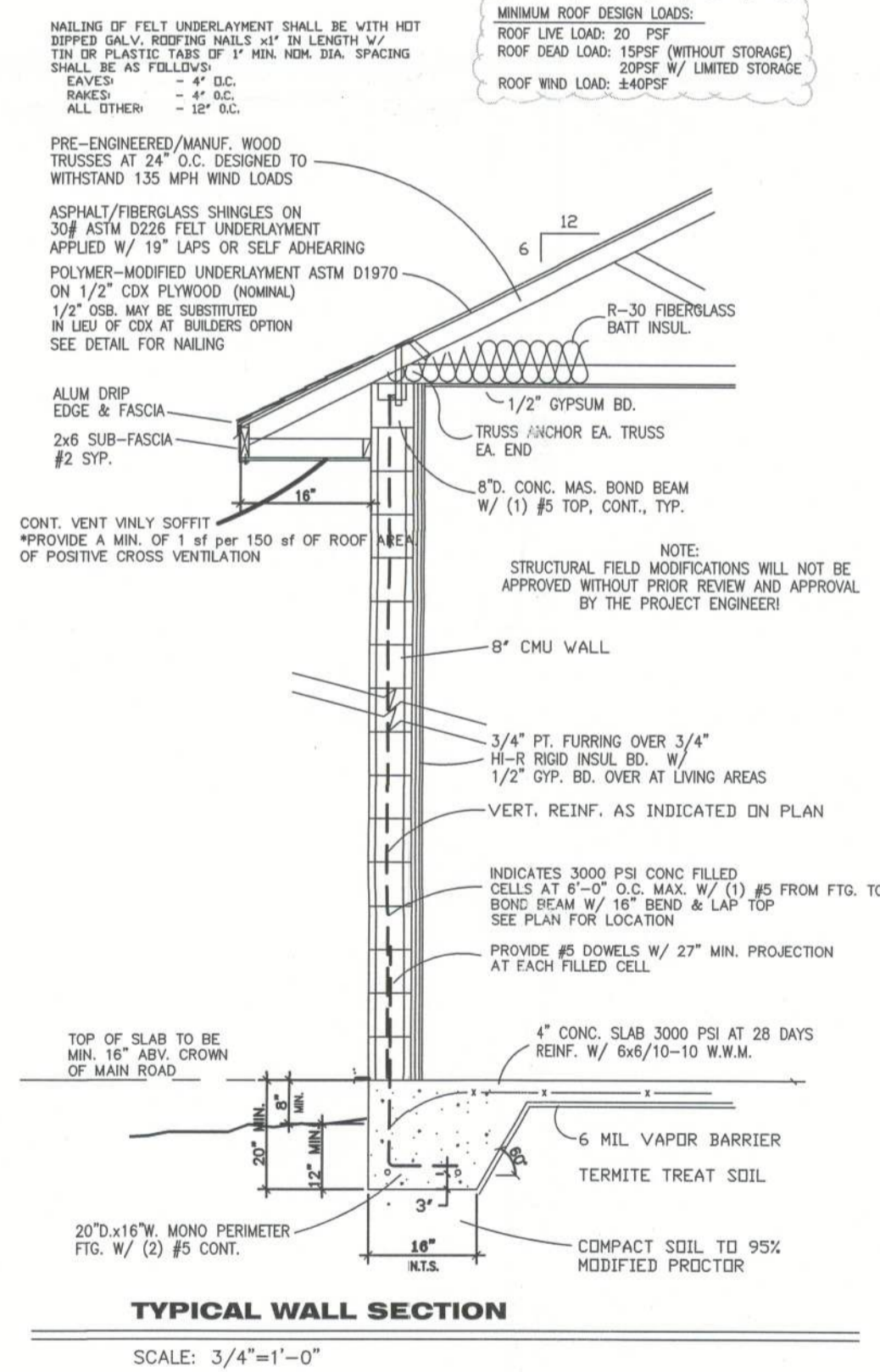
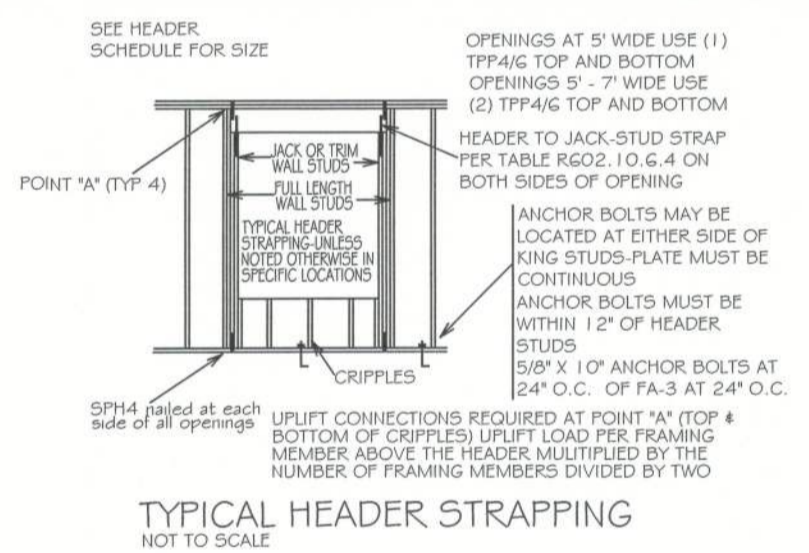
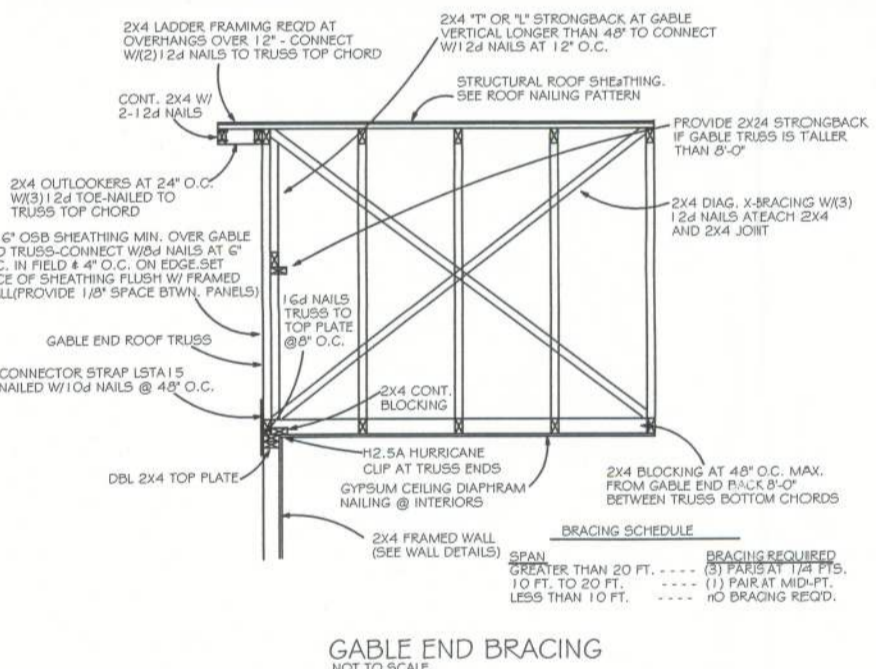
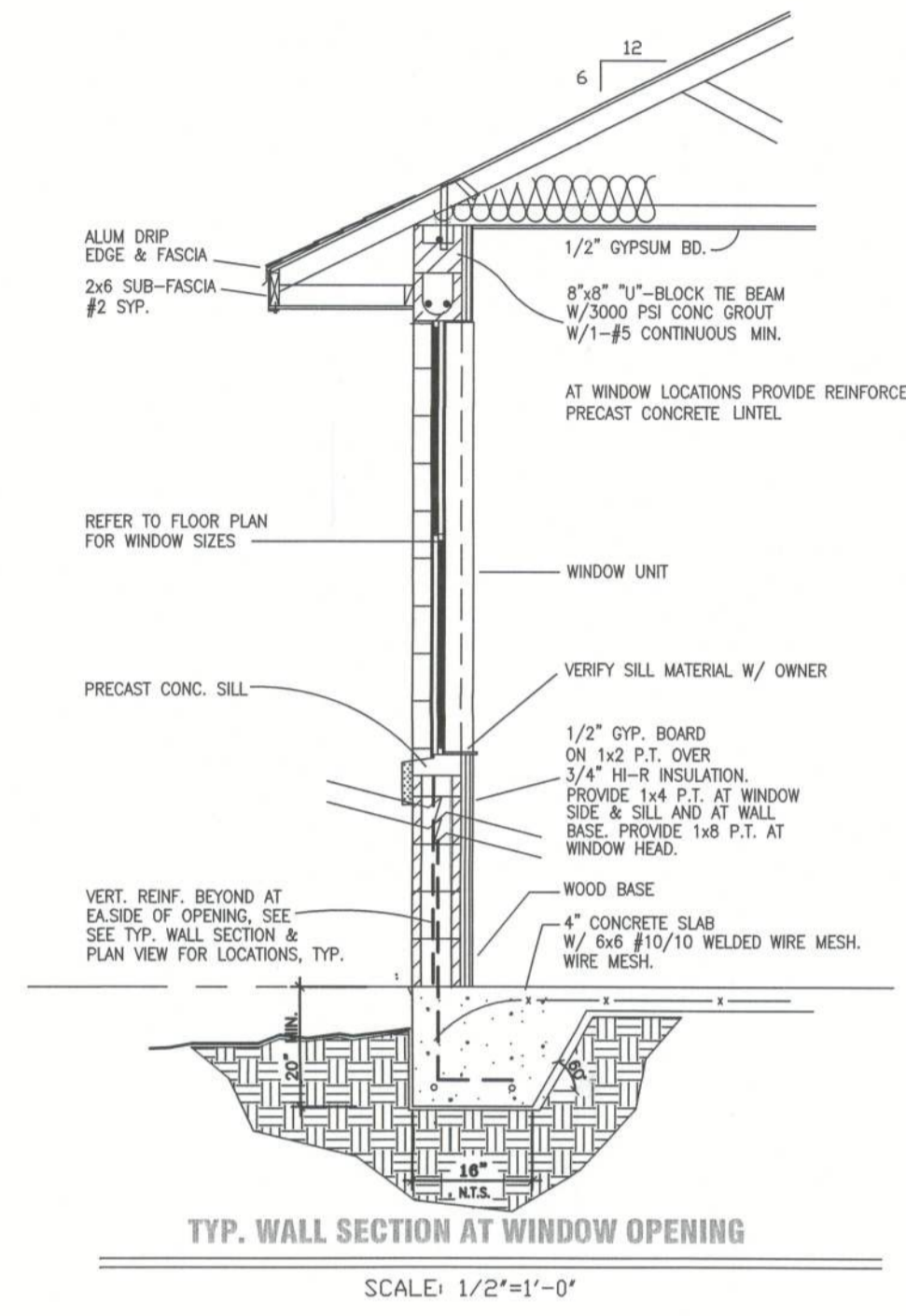
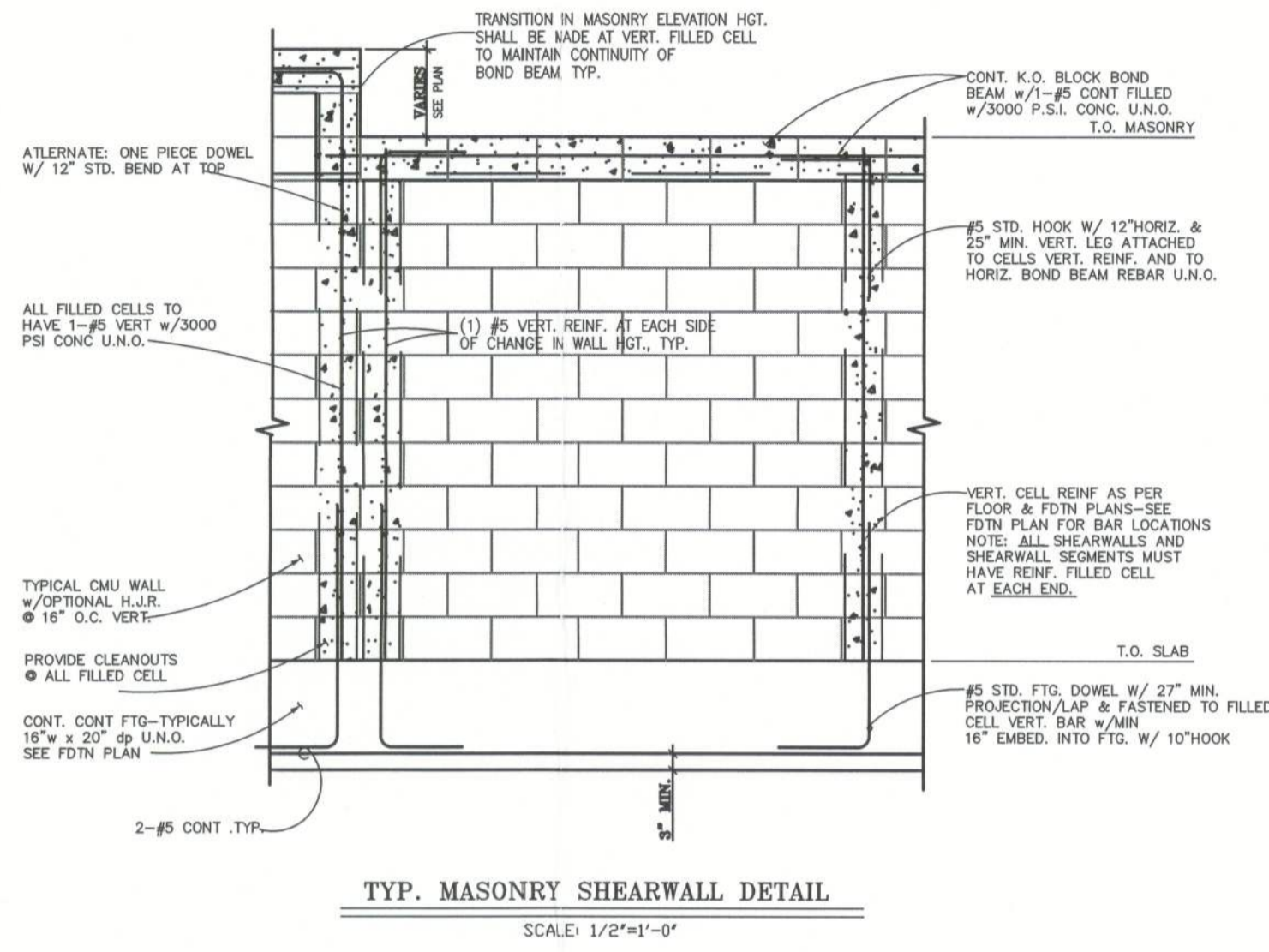
ROOF SHEATHING FASTENING

- 4" O.C. GABLE END
 - 6" O.C. EDGES (ALL ZONES)
 - 6" O.C. INTERMEDIATE FRAMING (ZONE 3)
 - 12" O.C. INTERMEDIATE FRAMING (ZONES 1 & 2)
- SEE FIGURE R603.2.3.1, SECTION R603.1, 2017 FLORIDA BUILDING CODE - RESIDENTIAL, SIXTH EDITION FOR ROOF SHEATHING NAILING ZONES

ROOF NOTES

ROOF PITCH LESS THAN 4/12 DBL LAYER OF UNDERLAYMENT IS REQUIRED
 OVERLAP ROOFING UNDERLAYMENT 4"(MIN) OVER HIP'S AND RIDGES
 BUTON CAP NAILS ARE USED TO FASTEN UNDERLAYMENT TO ROOF DECK WHEN SHINGLES NOT INSTALLED SAME DAY
 DRIP EDGE INSTALLED OVER THE UNDERLAYMENT AT RAKES AND UNDER THE UNDERLAYMENT AT EAVES
 ALL ROOF PENETRATIONS ARE PROPERLY FLASHED W/ FLASHING OF THE CORRECT SIZE FOR THE PENETRATION
 METAL ROOFING ATTACHED W/ CORRECT FASTENERS PER CODE AND MANUFACTURERS SPECS
 1" SPACE IS MAINTAINED BETWEEN THE END OF THE GUTTER AND THE WALL CLADDING

NOTE
 7/16" O.S.B. NAILED WITH 8D 6" O.C. IN FIELD 4'4" O.C. ON EDGES



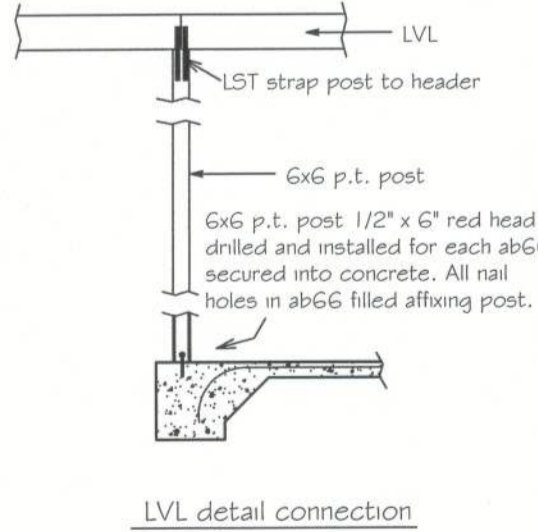
HEADER SCHEDULE

NOTE: UPLIFT CONNECTION IS REQUIRED AT EACH END OF HEADER AND AT BOTTOM OF HEADER STUDS IN ADDITION TO CONNECTORS AT WALL STUDS AND AT TOP AND BOTTOM OF CRIPPLES

OPENING WIDTH	BEARING OR SHEAR WALL	NON-BEARING WALLS	MAXIMUM HEADER SPAN
0'-0" TO 3'-0"	2 - 2 x 6s	2 - 2 x 4s	3' 6" 9' 12' 15' 18'
3'-1" TO 5'-0"	2 - 2 x 10s	2 - 2 x 6s	
5'-1" TO 7'-0"	2 - 2 x 10s	2 - 2 x 8s	
7'-1" TO 10'-0"	2 - 2 x 10s	2 - 2 x 10s	

NUMBER OF HEADER STUDS (JACKS) SUPPORTING END OF HEADER: 1 1 2 2 2 2

NUMBER OF FULL LENGTH STUDS (KINGS) AT END OF HEADER: 2



Double 1-3/4" x 11-1/4" LVL beam over opening up to 12' and up to 14'
 Double 1-3/4" x 11-7/8" LVL beam over opening over 12' and up to 16' with 3 king studs each end and 2 trimmers each end of beam. Fastened with 12d nails to top plate and framing members. One P20 at both sides of opening embedded min 4" into concrete. LST10 strap over trimmer to header each side.

CAROL J. CHADWICK
 LICENSED PROFESSIONAL ENGINEER
 STATE OF FLORIDA
 No. 82930
 Exp. 12/31/2024

SOTO RESIDENCE WALL DETAILS
 TBD MAGNOLIA LANE, FORT WHITE, FL

PROJECT: 23129
 DATE: MAY 9, 2023
 SHEET: 5-2



Digitally signed by Carol Chadwick
 DN: cn=Carol Chadwick, o=SOTO RESIDENCE WALL DETAILS, email=carol.chadwick@jagpro.com, c=US
 Date: 2023.05.09 12:12:16 -0400