

LOT 4
 HERMITAGE GLEN
 HIGH SPRINGS, FL
 32643

REVISED SITE PLAN

11/14/25

N.W. CORNER OF
 THE SE 1/4 OF
 THE NE 1/4, SECTION 21
 N.M. & T.M., NO. 10,
 IN TOP OF RAILROAD
 CROSSING.
 5/8" I.R., LS 4708,
 SET AS OFFSETS 1.0' E.
 AND 1.0' S. OF THE
 SE 1/4 OF THE NE 1/4
 AS ACCEPTED.

BENCHMARK
 TOP OF EAST
 OFFSET FROM ROD,
 60.87 FEET NGVD 29
 DATUM.
 TOP OF SOUTH
 OFFSET FROM ROD
 60.88' NGVD 29
 DATUM.

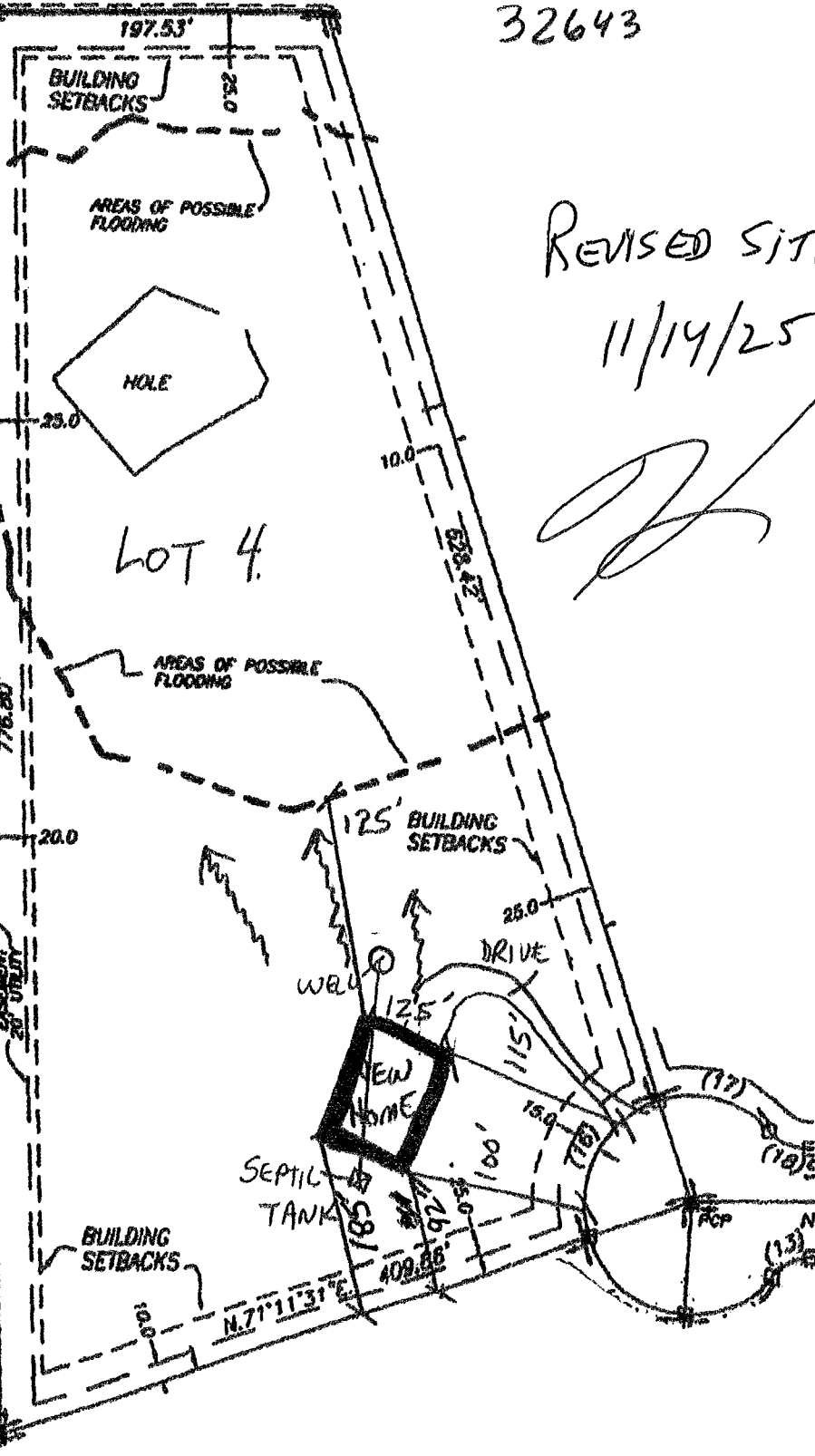
FOUND 3" ROUND CM,
 LS 1519, 2.3' N., 2.9'
 W. OF NW CORNER OF
 SE 1/4 OF NE 1/4
 AS ACCEPTED.

SW ACIE JAMES ROAD
 (16' ± DIRT ROAD)

ADDITIONAL ROAD R/W MANDATED BY COLUMBIA COUNTY, NOT A PART.

FIELD
 1320.50' FIELD
 1320.57' FIELD
 1320.70'

A PART.
 S.07°53'26" E. 1320.50'
 S.02°16'50" E. 1320.57'
 S.02°16'50" E. 1320.70'



LANDS OF
 PARNELL ISIAH L.
 PARCEL # 10041-000
 ZONED A-3
 35.88 AC. ±
 O.R.B. 1012, PAGE 833
 NOT A PART

BENCHMARK
 N.M. SET IN UTILITY
 POLE. ELEV. 58.95'
 NGVD 29 DATUM.

BUILDING SETBACKS (A-3)
 FRONT 30'
 REAR 25'
 SIDE 25'