

ROOF VENT CALCULATION

FORMULA

1 SQUARE INCH FOR EVERY 300 SQUARE INCHES OF CEILING
 1.44 SQUARE INCHES = 1 SQUARE FOOT
 BUILDING CEILING (50 FT) x 144 = BUILDING (50 SQ IN)
 BUILDING (50 IN) x 500 = 25,000 IN OF VENT REQUIRED
 50 IN OF VENT REQUIRED ÷ 2 = 25,000 AT HIGH AND 50% AT LOW
 PER IRC SECTION R802.2, 40% MIN, BUT NOT MORE THAN 50% OF
 VENTILATION MUST BE PROVIDED BY VENTILATORS LOCATED A
 MIN 3'-0" ABOVE EAVE

BASE OF CALCULATION:

(a) OFF RIDGE VENTS - STAMPCO W/ 36 SQ IN (IN/VA) PER LINEAL FT
 (b) SOFFIT VENTS - GP T3-1/3" FULL VENT PERFORATED W/ 9, 19 SQ IN
 (IN/VA) PER LINEAL FT

CALCULATED LINEAL FOOT OF SOFFIT VENT SHALL NOT INCLUDE
 NON-VENTED FIRE RATED SOFFITS LOCATED LESS THAN 5' FROM
 PROPERTY LINE

AREA (SQ FT)	REQUIRED (SQ IN)	PROVIDED (SQ IN)	LINEAL FT	LOW (SQ IN)

SOFFIT TABLE VENT SPECS

Double 5" perforated soffits have a 6.20 sq. inches/ sq. foot rating
 Triple 4" center vent soffits have a 1.95 sq. inches/ sq. foot rating
 Triple 4" full vent soffits have a 5.67 sq. inches/ sq. foot rating
 Triple 4" basketweave full vent have a 14.34 sq. inches/ sq. foot rating
 Triple 4" center vent have a 4.70 sq. inches/ sq. foot rating
 Beaded hidden vent soffits have 2.66 sq. inches/ sq. foot rating
 Triple 3-1/2" hidden vent soffits have a 9.19 sq. inches/ sq. foot rating

NOTE
 7/16" O.S.B. NAILED WITH 8D 6"
 O.C. IN FIELD & 4" O.C. ON EDGES

NOTE
 Simpson Strong-Tie Co. Strong-Drive SDWC TRUSS Screws may be used for uplift connection in lieu of straps. Strong-Drive SDWC TRUSS Screws to be installed per manufacturer's specifications.

Simpson Strong-Tie Co. Titen HD Heavy-Duty Screw Anchors 5/8" x 8", maximum spacing of 24" o.c., may be used in lieu of 5/8"x10" anchor bolts with 3"x3"x1/8" washer. Titen HD Heavy-Duty Screw Anchors shall be installed per manufacturer's specifications.

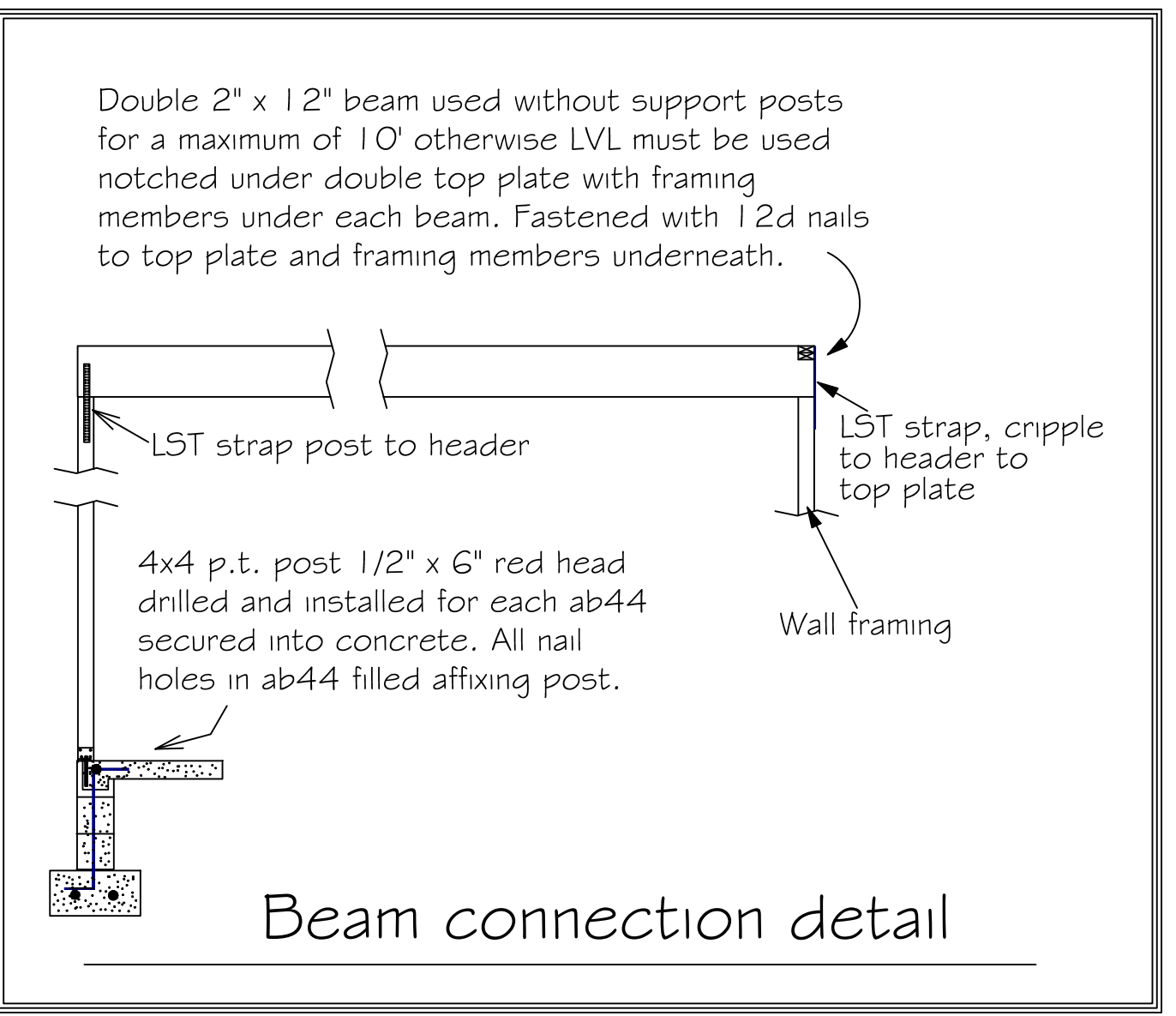
ROOF SHEATHING FASTENING

- 4" O.C. GABLE END
- 6" O.C. EDGES (ALL ZONES)
- 6" O.C. INTERMEDIATE FRAMING (ZONE 3)
- 12" O.C. INTERMEDIATE FRAMING (ZONES 1 & 2)

SEE FIGURE R803.2.3.1, SECTION R803.1, 2023 FLORIDA BUILDING CODE - RESIDENTIAL, 8TH EDITION FOR ROOF SHEATHING NAILING ZONES

ROOF NOTES

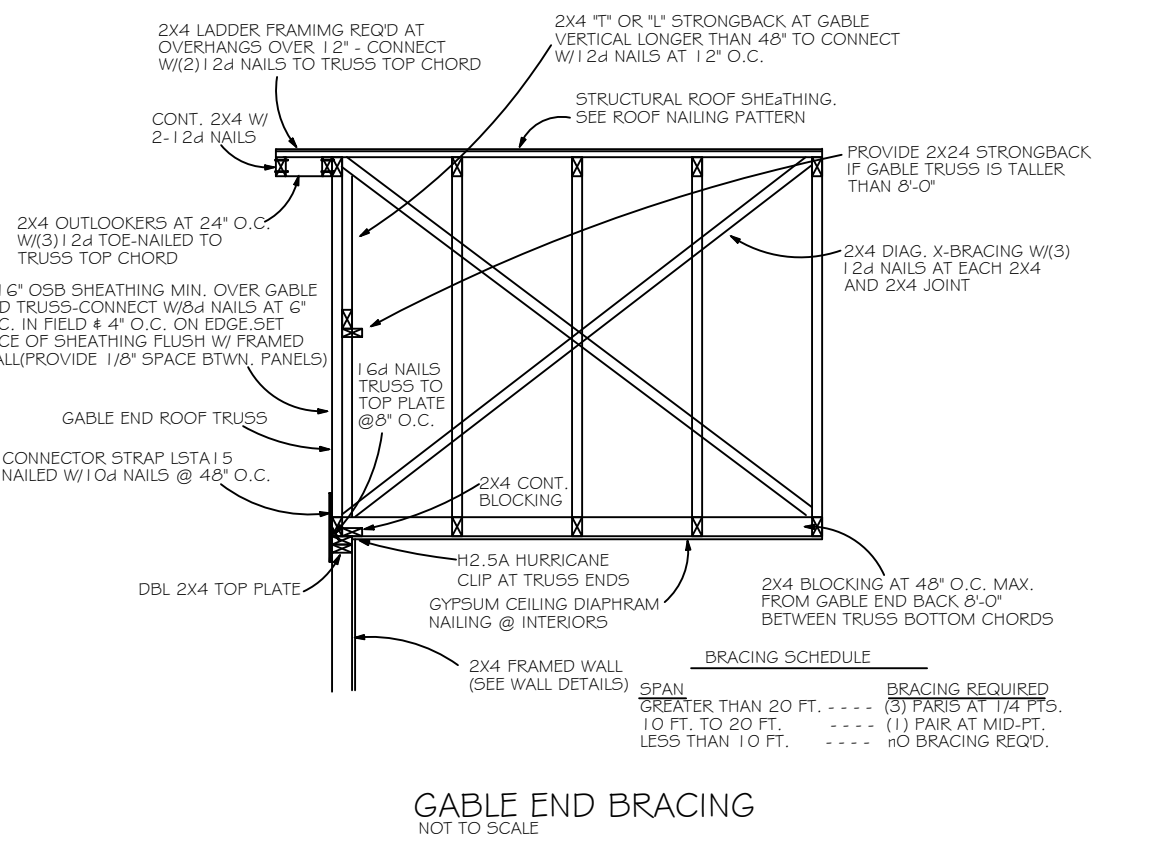
ROOF FITCH LESS THEN 4 1/2 DBL LAYER OF UNDERLAYMENT IS REQUIRED
 OVERLAP ROOFING UNDERLAYMENT 4(MIN) OVER HIPS AND RIDGES
 BUTON CAP NAILS ARE USED TO FASTEN UNDERLAYMENT TO ROOF DECK WHEN SHINGLES NOT INSTALLED SAME DAY
 DRIP EDGE INSTALLED OVER THE UNDERLAYMENT AT RAKES AND UNDER THE UNDERLAYMENT AT EAVES
 ALL ROOF PENETRATIONS ARE PROPERLY FLASHED W/ FLASHING OF THE CORRECT SIZE FOR THE PENETRATION
 METAL ROOFING ATTACHED W/ CORRECT FASTENERS PER CODE AND MANUFACTURERS SPECS
 1" SPACE IS MAINTAINED BETWEEN THE END OF THE GUTTER AND THE WALL CLADDING



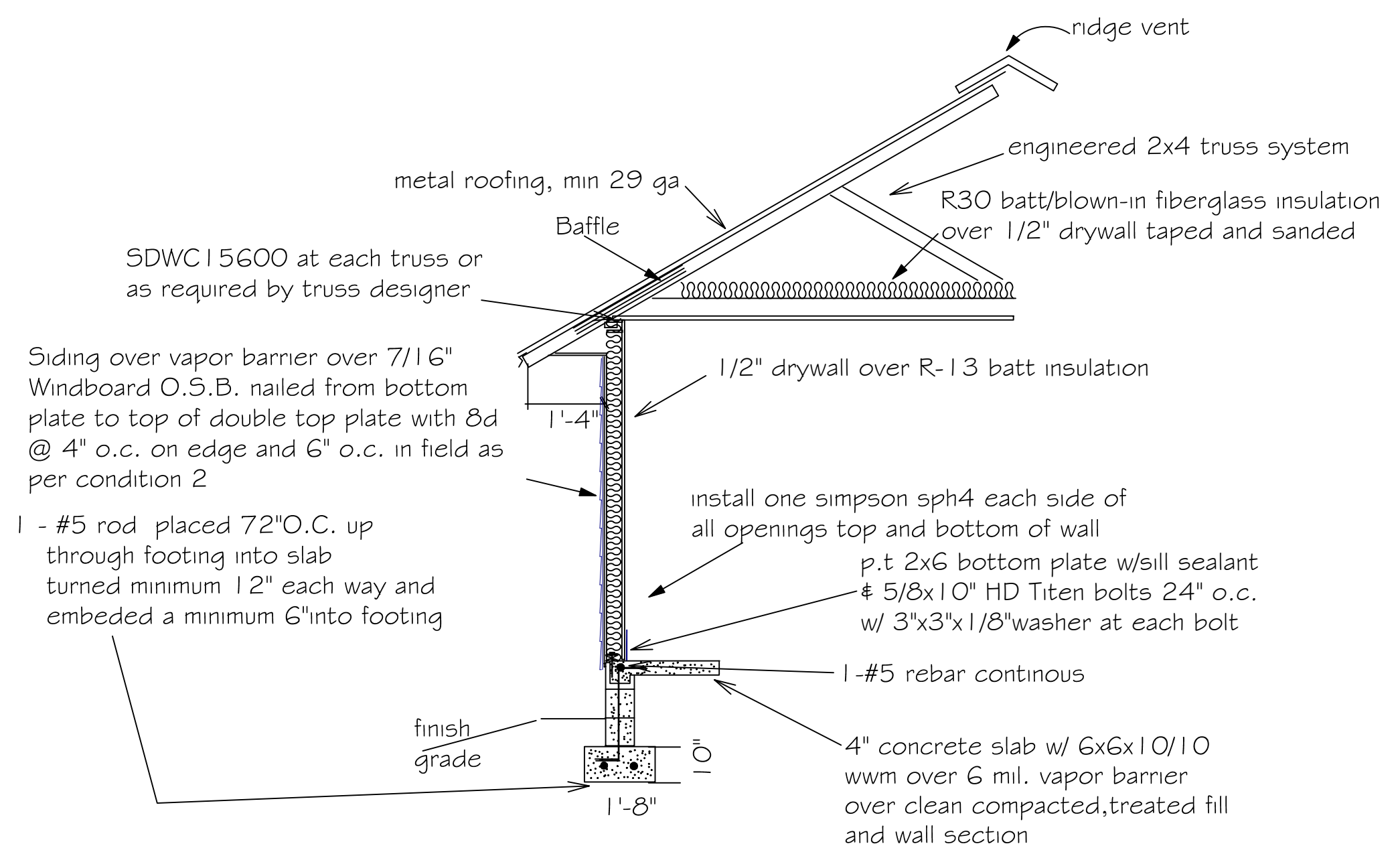
Beam connection detail

Double 1 3/4" x 11-1/4" LVL beam over opening up to 12'
 Double 1 3/4" x 11-7/8" LVL beam over opening over 12' and up to 14'
 Double 1 3/4" x 14" LVL beam over opening over 14' and up to 16' with 3 king studs each end and 2 trimmers each end of beam. Fastened with 12d nails to top plate and framing members. One PA28 at both sides of opening embedded min 4" into concrete. LST 18 strap over trimmer to header each side.

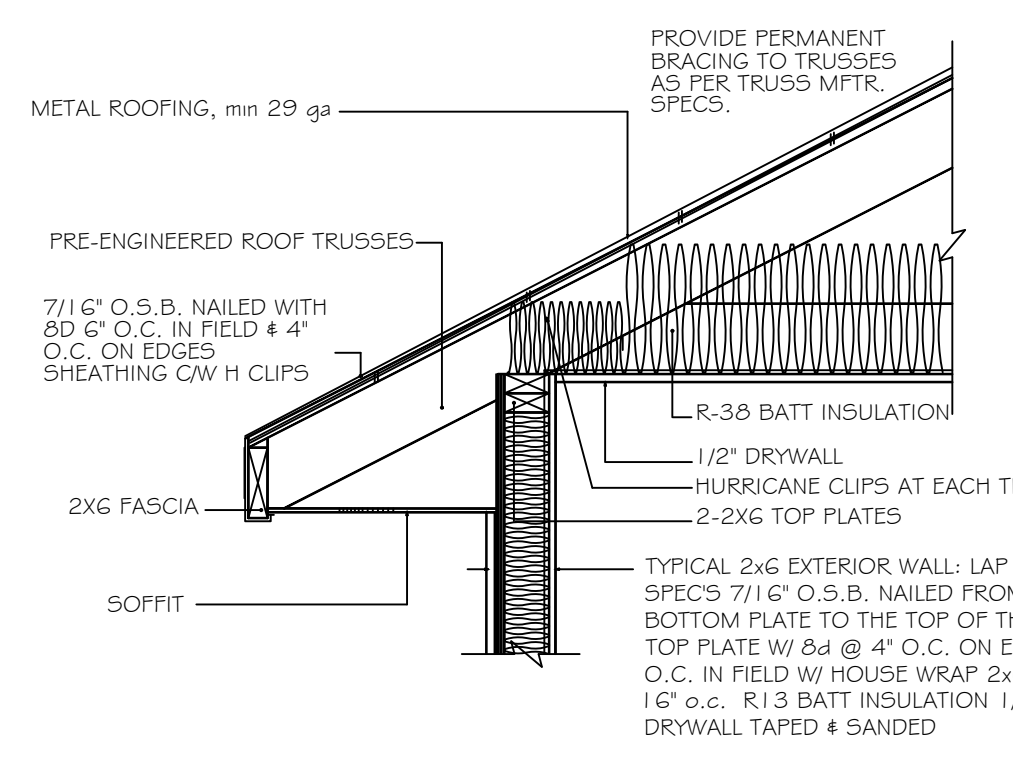
IF ANY DISCREPANCIES ARE FOUND IN THE PLANS, THE ENGINEERED PLANS SHALL APPLY.



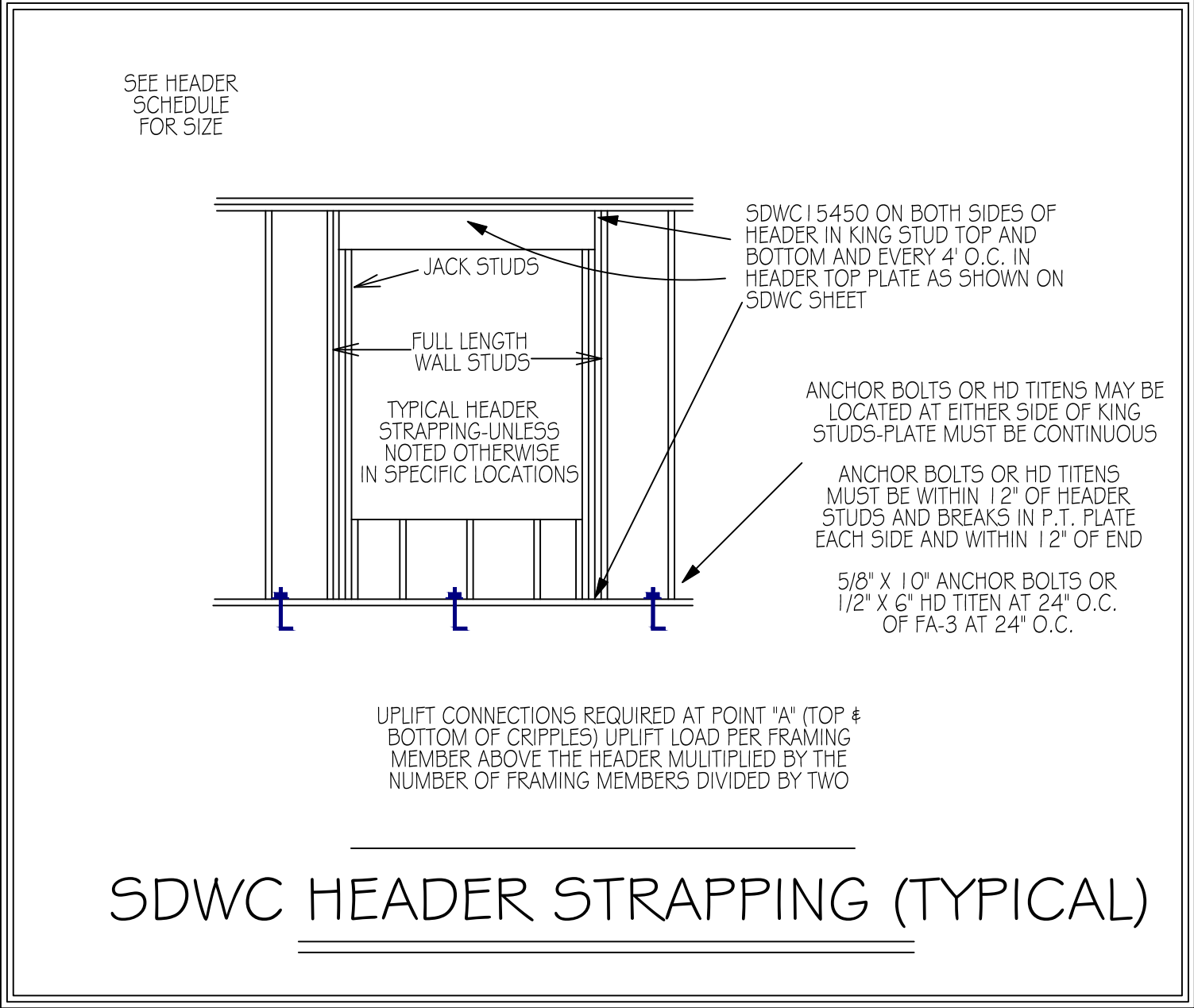
GABLE END BRACING
 NOT TO SCALE



"AA" Windboard wall detail



4" STUD EAVE



SDWC HEADER STRAPPING (TYPICAL)

HEADER SCHEDULE

2X STUD CONTINUOUS TO TOP PLATE

HEADER - CONTINUOUS

2 - 2X STUDS UNDER LINTELS WITH OPENINGS LARGER THEN 5'-0"

NOTE: UPLIFT CONNECTION IS REQUIRED AT EACH END OF HEADER AND AT BOTTOM OF HEADER STUDS IN ADDITION TO CONNECTORS AT WALL STUDS AND AT TOP AND BOTTOM OF CRIPPLES

OPENING WIDTH	BEARING OR SHEAR WALL	NON-BEARING WALLS
0'-0" TO 3'-0"	2 - 2 x 6's	2 - 2 x 4's
3'-1" TO 5'-0"	2 - 2 x 8's	2 - 2 x 6's
5'-1" TO 7'-0"	2 - 2 x 10's	2 - 2 x 8's
7'-1" TO 10'-0"	2 - 2 x 12's	2 - 2 x 10's

MAXIMUM HEADER SPAN

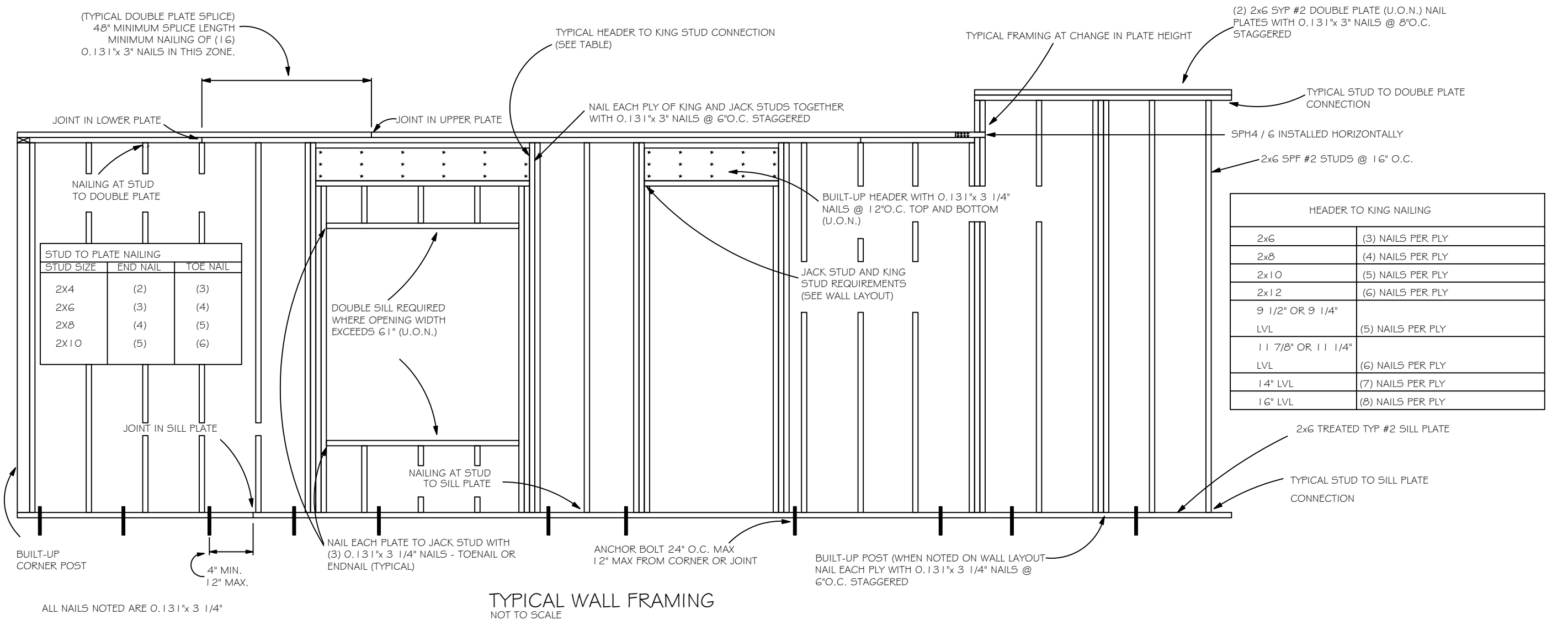
3'	6'	9'	12'	15'	18'
----	----	----	-----	-----	-----

NUMBER OF HEADER STUDS SUPPORTING END OF HEADER

1	1	2	2	2	2
---	---	---	---	---	---

NUMBER OF FULL LENGTH STUDS AT END OF HEADER

2



TYPICAL WALL FRAMING
 NOT TO SCALE

CAROL CHADWICK, P.E.
 REGISTERED PROFESSIONAL ENGINEER
 STATE OF FLORIDA
 LICENSE NO. 126115
 EXPIRES 12/31/2026

JOHNSON RESIDENCE
 FRAMING DETAILS
 8421 SW ELM CHURCH ROAD, FORT WHITE, FL

DATE: JUNE 5, 2026
 SHEET: 5-2