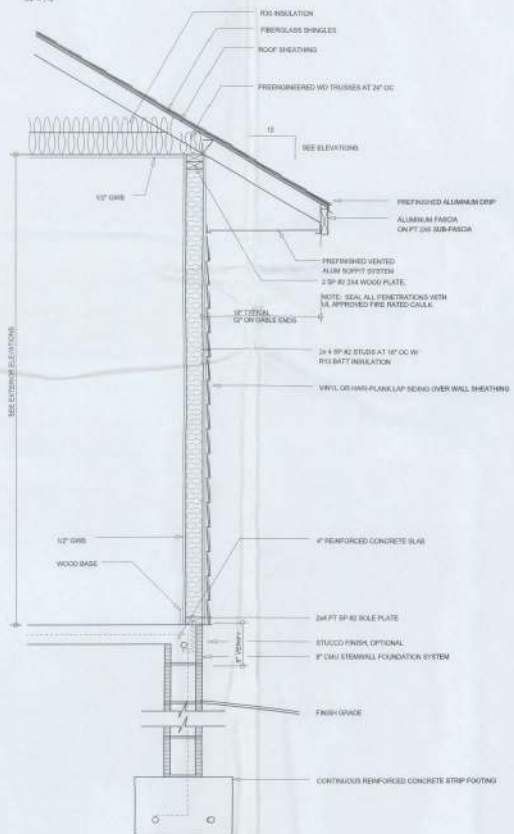




LEFT ELEVATION
SCALE: 1/4" = 1'-0"



RIGHT ELEVATION
SCALE: 1/4" = 1'-0"



TYPICAL WALL SECTION
SCALE: 1/4" = 1'-0"



REAR ELEVATION
SCALE: 1/4" = 1'-0"



FRONT ELEVATION
SCALE: 1/4" = 1'-0"

NOTE: ALL DRAWINGS NOT TO BE SCALED, WRITTEN DIMENSIONS TAKE PRECEDENCE OVER SCALED DIMENSIONS

REVISIONS	May 12, 2014
SOFTPLAN	
EXTERIOR ELEVATIONS	SCALE: 1/4" = 1'-0"
TYPICAL WALL SECTION	SCALE: 1/4" = 1'-0"

A NEW HOUSE FOR
TIE MARE YOLDS
PROJECT ADDRESS: MAYSBUR RD
LAKE CITY, FLORIDA, 32866
STANLEY CRAWFORD CONSTRUCTION, INC.



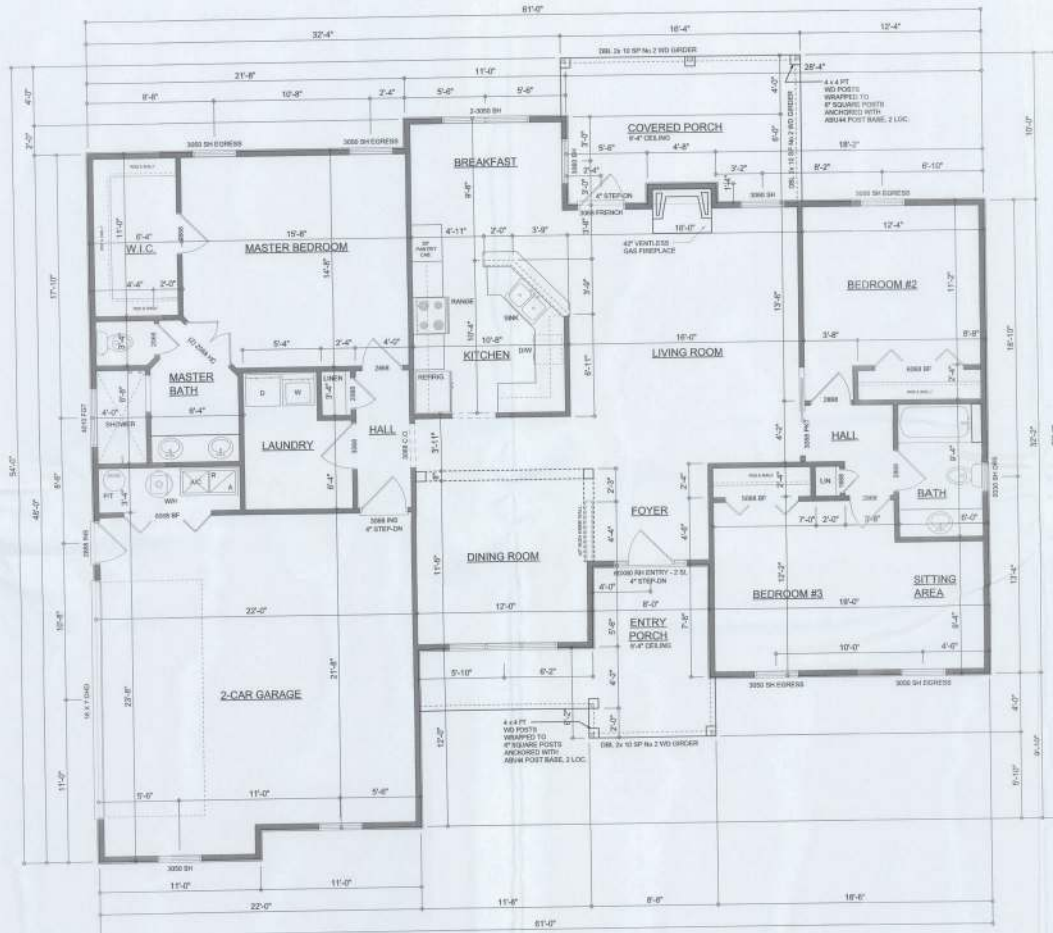
WILLIAM MYERS &
SUN INC.
P.O. BOX 1151
LAKE CITY, FL 32866
(386) 758-8406
www.williammyers.com



JOB NUMBER
110704

SHEET NUMBER
A.1
OF 3 SHEETS

Will C. Myers



FLOOR PLAN

SCALE: 1/4" = 1'-0"

NOTE: ALL WALL HEIGHTS SHALL BE 8'-0" UNLESS OTHERWISE NOTED

NOTE: ALL DRAWINGS NOT TO BE SCALED, WRITTEN DIMENSIONS TAKE PRECEDENCE OVER SCALED DIMENSIONS

AREA SUMMARY

LIVING AREA	1,744	S.F.
GARAGE AREA	522	S.F.
ENTRY PORCH AREA	145	S.F.
COVERED PORCH AREA	161	S.F.
TOTAL AREA	2,572	S.F.

REVISIONS
May 22, 2014



DIMENSIONED FLOOR PLAN
SCALE: 1/4" = 1'-0"

A NEW HOUSE FOR:
THE MAREYNOLDS
PROJECT ADDRESS: MAYNARD
STANLEY CRAWFORD CONSTRUCTION, INC.
LAKE CITY, FLORIDA 32806

©WILLIAM MYERS &
DICKSON INC.
P.O. BOX 1913
LAKE CITY, FL 32806
(386) 758-8406
www.wm-d.com



JOB NUMBER
110704

SHEET NUMBER
A.2
OF 3 SHEETS

William Myers

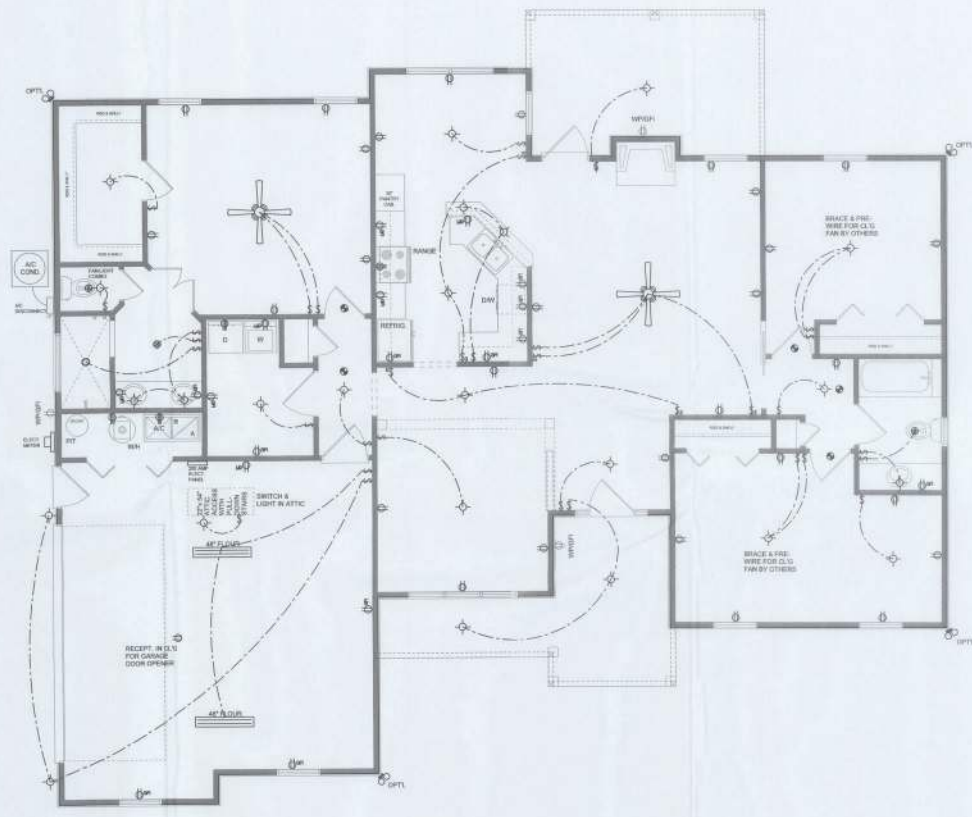
ELECTRICAL LEGEND	
	CEILING FAN (PRE-WIRE FOR LIGHT KIT)
	DOUBLE SECURITY LIGHT
	RECESSED CAN LIGHT
	BATH EXHAUST FAN
	LIGHT FIXTURE
	DUPLEX OUTLET (GFCI & TAMPER RESISTANT)
	20A OUTLET
	50A DUPLEX OUTLET (PER NEC 408.5)
	TELEVISION JACK
	TELEPHONE JACK
	SMOKE / CARBON MONOXIDE DETECTOR (SEE NOTE BELOW)
	WALL SWITCH
	3 WAY WALL SWITCH
	WATER PROOF GFI OUTLET
	2 OR 4 TUB FLUORESCENT FIXTURE

NOTE: ALL INTERIOR RECEPTACLES SHALL BE AFCI (SPAC FAULT CIRCUIT INTERRUPT) PER NEC 210.12 & TAMPER RESISTANT PER NEC 408.11

ALL TRACK DETECTORS BE A COMBO SMOKE & CARBON MONOXIDE DETECTOR AND SHALL HAVE BATTERY BACKUP POWER AND ALL WIRE TOGETHER SO IF ANY ONE UNIT IS ACTIVATED THEY ALL ACTIVATE

THE ELECTRICAL SERVICE OVERCURRENT PROTECTION DEVICE SHALL BE INSTALLED ON THE EXTERIOR OF STRUCTURES TO SERVE AS A DISCONNECT MEANS. CONDUCTORS USED FROM THE EXTERIOR DISCONNECTING MEANS TO A PANEL OR SUB PANEL SHALL HAVE 25A MIN CONDUCTORS, OF WHICH ONE CONDUCTOR SHALL BE USED AS AN EQUIPMENT GROUND.

IT IS THE LICENSED ELECTRICAL CONTRACTORS RESPONSIBILITY TO INSURE THAT ALL WORK PERFORMED AND EQUIPMENT INSTALLED MEETS OR EXCEEDS THE 2008 NATIONAL ELECTRICAL CODE AND ALL OTHER LOCAL CODES AND ORDINANCES.



ELECTRICAL PLAN
SCALE: 1/8" = 1'-0"

NOTE: ALL DRAWINGS NOT TO BE SCALED, WRITTEN DIMENSIONS TAKE PRECEDENCE OVER SCALED DIMENSIONS

REVISIONS
May 22, 2014

SOFTPLAN
ELECTRICAL PLAN
SCALE: 1/8" = 1'-0"

A NEW HOUSE FOR
TILE MERE WOLDS
PROJECT: 110704, 11/19/13
STANLEY CRAWFORD CONSTRUCTION, INC.
LAKE CITY, FLORIDA, 3708

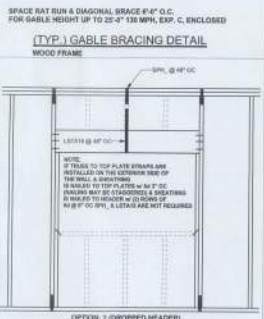
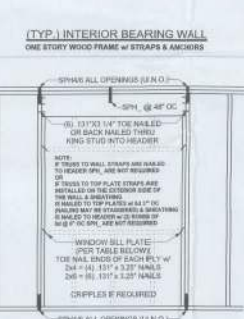
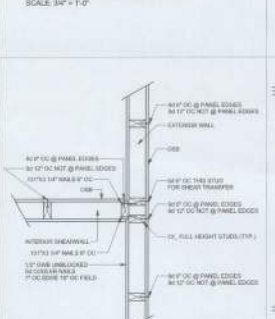
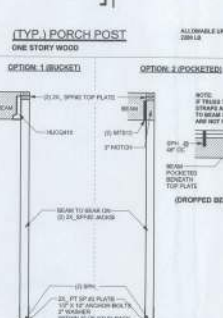
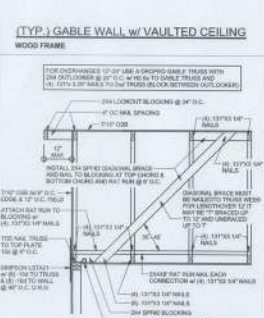
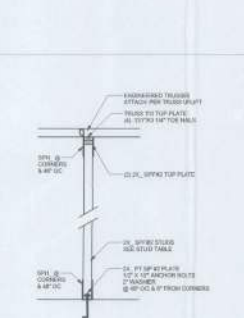
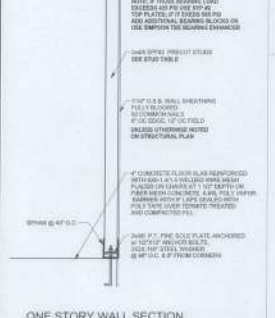
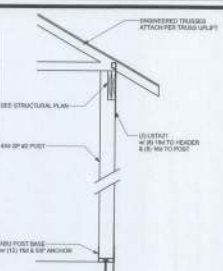
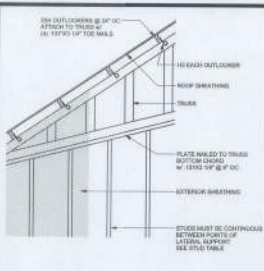
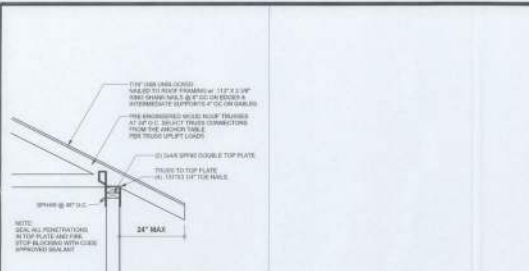
WILLIAM MYERS
OK JACK INC.
P.O. BOX 1013
LAKE CITY, FL 32828
(386) 755-8406
wmyers@okjack.com



JOB NUMBER
110704

SHEET NUMBER
A.3
OF 3 SHEETS

Will C. Crawford

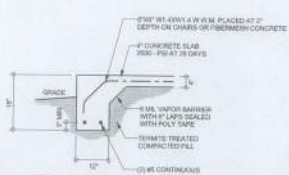


GENERAL NOTES:

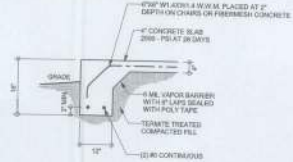
FRAMER SHALL BE DESIGNATED BY A FLORIDA LICENSED ENGINEER...
 CONCRETE: MINIMUM COMPRESSIVE STRENGTH OF CONCRETE AT 28 DAYS...
 ANCHOR BOLTS: WHERE SPECIFIED, ANCHOR BOLTS SHALL BE...
 MASONRY: CONSTRUCTION AND MATERIALS FOR MASONRY SHALL CONFORM TO ALL REQUIREMENTS OF "SPECIFICATION FOR MASONRY STRUCTURES"...

ANCHOR TABLE

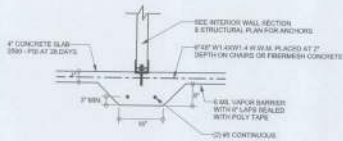
EMBED LENGTH (MIN)	EMBED LENGTH (MAX)	SPACING	TO PLATE	TO REINFORCEMENT	TO STEEL
4-10	4-20	18"	5/8"	5/8"	5/8"
4-12	4-22	18"	5/8"	5/8"	5/8"
4-14	4-24	18"	5/8"	5/8"	5/8"
4-16	4-26	18"	5/8"	5/8"	5/8"
4-18	4-28	18"	5/8"	5/8"	5/8"
4-20	4-30	18"	5/8"	5/8"	5/8"
4-22	4-32	18"	5/8"	5/8"	5/8"
4-24	4-34	18"	5/8"	5/8"	5/8"
4-26	4-36	18"	5/8"	5/8"	5/8"
4-28	4-38	18"	5/8"	5/8"	5/8"
4-30	4-40	18"	5/8"	5/8"	5/8"
4-32	4-42	18"	5/8"	5/8"	5/8"
4-34	4-44	18"	5/8"	5/8"	5/8"
4-36	4-46	18"	5/8"	5/8"	5/8"
4-38	4-48	18"	5/8"	5/8"	5/8"
4-40	4-50	18"	5/8"	5/8"	5/8"
4-42	4-52	18"	5/8"	5/8"	5/8"
4-44	4-54	18"	5/8"	5/8"	5/8"
4-46	4-56	18"	5/8"	5/8"	5/8"
4-48	4-58	18"	5/8"	5/8"	5/8"
4-50	4-60	18"	5/8"	5/8"	5/8"
4-52	4-62	18"	5/8"	5/8"	5/8"
4-54	4-64	18"	5/8"	5/8"	5/8"
4-56	4-66	18"	5/8"	5/8"	5/8"
4-58	4-68	18"	5/8"	5/8"	5/8"
4-60	4-70	18"	5/8"	5/8"	5/8"
4-62	4-72	18"	5/8"	5/8"	5/8"
4-64	4-74	18"	5/8"	5/8"	5/8"
4-66	4-76	18"	5/8"	5/8"	5/8"
4-68	4-78	18"	5/8"	5/8"	5/8"
4-70	4-80	18"	5/8"	5/8"	5/8"
4-72	4-82	18"	5/8"	5/8"	5/8"
4-74	4-84	18"	5/8"	5/8"	5/8"
4-76	4-86	18"	5/8"	5/8"	5/8"
4-78	4-88	18"	5/8"	5/8"	5/8"
4-80	4-90	18"	5/8"	5/8"	5/8"
4-82	4-92	18"	5/8"	5/8"	5/8"
4-84	4-94	18"	5/8"	5/8"	5/8"
4-86	4-96	18"	5/8"	5/8"	5/8"
4-88	4-98	18"	5/8"	5/8"	5/8"
4-90	4-100	18"	5/8"	5/8"	5/8"
4-92	4-102	18"	5/8"	5/8"	5/8"
4-94	4-104	18"	5/8"	5/8"	5/8"
4-96	4-106	18"	5/8"	5/8"	5/8"
4-98	4-108	18"	5/8"	5/8"	5/8"
4-100	4-110	18"	5/8"	5/8"	5/8"
4-102	4-112	18"	5/8"	5/8"	5/8"
4-104	4-114	18"	5/8"	5/8"	5/8"
4-106	4-116	18"	5/8"	5/8"	5/8"
4-108	4-118	18"	5/8"	5/8"	5/8"
4-110	4-120	18"	5/8"	5/8"	5/8"
4-112	4-122	18"	5/8"	5/8"	5/8"
4-114	4-124	18"	5/8"	5/8"	5/8"
4-116	4-126	18"	5/8"	5/8"	5/8"
4-118	4-128	18"	5/8"	5/8"	5/8"
4-120	4-130	18"	5/8"	5/8"	5/8"
4-122	4-132	18"	5/8"	5/8"	5/8"
4-124	4-134	18"	5/8"	5/8"	5/8"
4-126	4-136	18"	5/8"	5/8"	5/8"
4-128	4-138	18"	5/8"	5/8"	5/8"
4-130	4-140	18"	5/8"	5/8"	5/8"
4-132	4-142	18"	5/8"	5/8"	5/8"
4-134	4-144	18"	5/8"	5/8"	5/8"
4-136	4-146	18"	5/8"	5/8"	5/8"
4-138	4-148	18"	5/8"	5/8"	5/8"
4-140	4-150	18"	5/8"	5/8"	5/8"
4-142	4-152	18"	5/8"	5/8"	5/8"
4-144	4-154	18"	5/8"	5/8"	5/8"
4-146	4-156	18"	5/8"	5/8"	5/8"
4-148	4-158	18"	5/8"	5/8"	5/8"
4-150	4-160	18"	5/8"	5/8"	5/8"
4-152	4-162	18"	5/8"	5/8"	5/8"
4-154	4-164	18"	5/8"	5/8"	5/8"
4-156	4-166	18"	5/8"	5/8"	5/8"
4-158	4-168	18"	5/8"	5/8"	5/8"
4-160	4-170	18"	5/8"	5/8"	5/8"
4-162	4-172	18"	5/8"	5/8"	5/8"
4-164	4-174	18"	5/8"	5/8"	5/8"
4-166	4-176	18"	5/8"	5/8"	5/8"
4-168	4-178	18"	5/8"	5/8"	5/8"
4-170	4-180	18"	5/8"	5/8"	5/8"
4-172	4-182	18"	5/8"	5/8"	5/8"
4-174	4-184	18"	5/8"	5/8"	5/8"
4-176	4-186	18"	5/8"	5/8"	5/8"
4-178	4-188	18"	5/8"	5/8"	5/8"
4-180	4-190	18"	5/8"	5/8"	5/8"
4-182	4-192	18"	5/8"	5/8"	5/8"
4-184	4-194	18"	5/8"	5/8"	5/8"
4-186	4-196	18"	5/8"	5/8"	5/8"
4-188	4-198	18"	5/8"	5/8"	5/8"
4-190	4-200	18"	5/8"	5/8"	5/8"
4-192	4-202	18"	5/8"	5/8"	5/8"
4-194	4-204	18"	5/8"	5/8"	5/8"
4-196	4-206	18"	5/8"	5/8"	5/8"
4-198	4-208	18"	5/8"	5/8"	5/8"
4-200	4-210	18"	5/8"	5/8"	5/8"
4-202	4-212	18"	5/8"	5/8"	5/8"
4-204	4-214	18"	5/8"	5/8"	5/8"
4-206	4-216	18"	5/8"	5/8"	5/8"
4-208	4-218	18"	5/8"	5/8"	5/8"
4-210	4-220	18"	5/8"	5/8"	5/8"
4-212	4-222	18"	5/8"	5/8"	5/8"
4-214	4-224	18"	5/8"	5/8"	5/8"
4-216	4-226	18"	5/8"	5/8"	5/8"
4-218	4-228	18"	5/8"	5/8"	5/8"
4-220	4-230	18"	5/8"	5/8"	5/8"
4-222	4-232	18"	5/8"	5/8"	5/8"
4-224	4-234	18"	5/8"	5/8"	5/8"
4-226	4-236	18"	5/8"	5/8"	5/8"
4-228	4-238	18"	5/8"	5/8"	5/8"
4-230	4-240	18"	5/8"	5/8"	5/8"
4-232	4-242	18"	5/8"	5/8"	5/8"
4-234	4-244	18"	5/8"	5/8"	5/8"
4-236	4-246	18"	5/8"	5/8"	5/8"
4-238	4-248	18"	5/8"	5/8"	5/8"
4-240	4-250	18"	5/8"	5/8"	5/8"
4-242	4-252	18"	5/8"	5/8"	5/8"
4-244	4-254	18"	5/8"	5/8"	5/8"
4-246	4-256	18"	5/8"	5/8"	5/8"
4-248	4-258	18"	5/8"	5/8"	5/8"
4-250	4-260	18"	5/8"	5/8"	5/8"
4-252	4-262	18"	5/8"	5/8"	5/8"
4-254	4-264	18"	5/8"	5/8"	5/8"
4-256	4-266	18"	5/8"	5/8"	5/8"
4-258	4-268	18"	5/8"	5/8"	5/8"
4-260	4-270	18"	5/8"	5/8"	5/8"
4-262	4-272	18"	5/8"	5/8"	5/8"
4-264	4-274	18"	5/8"	5/8"	5/8"
4-266	4-276	18"	5/8"	5/8"	5/8"
4-268	4-278	18"	5/8"	5/8"	5/8"
4-270	4-280	18"	5/8"	5/8"	5/8"
4-272	4-282	18"	5/8"	5/8"	5/8"
4-274	4-284	18"	5/8"	5/8"	5/8"
4-276	4-286	18"	5/8"	5/8"	5/8"
4-278	4-288	18"	5/8"	5/8"	5/8"
4-280	4-290	18"	5/8"	5/8"	5/8"
4-282	4-292	18"	5/8"	5/8"	5/8"
4-284	4-294	18"	5/8"	5/8"	5/8"
4-286	4-296	18"	5/8"	5/8"	5/8"
4-288	4-298	18"	5/8"	5/8"	5/8"
4-290	4-300	18"	5/8"	5/8"	5/8"
4-292	4-302	18"	5/8"	5/8"	5/8"
4-294	4-304	18"	5/8"	5/8"	5/8"
4-296	4-306	18"	5/8"	5/8"	5/8"
4-298	4-308	18"	5/8"	5/8"	5/8"
4-300	4-310	18"	5/8"	5/8"	5/8"
4-302	4-312	18"	5/8"	5/8"	5/8"
4-304	4-314	18"	5/8"	5/8"	5/8"
4-306	4-316	18"	5/8"	5/8"	5/8"
4-308	4-318	18"	5/8"	5/8"	5/8"
4-310	4-320	18"	5/8"	5/8"	5/8"
4-312	4-322	18"	5/8"	5/8"	5/8"
4-314	4-324	18"	5/8"	5/8"	5/8"
4-316	4-326	18"	5/8"	5/8"	5/8"
4-318	4-328	18"	5/8"	5/8"	5/8"
4-320	4-330	18"	5/8"	5/8"	5/8"
4-322	4-332	18"	5/8"	5/8"	5/8"
4-324	4-334	18"	5/8"	5/8"	5/8"
4-326	4-336	18"	5/8"	5/8"	5/8"
4-328	4-338	18"	5/8"	5/8"	5/8"
4-330	4-340	18"	5/8"	5/8"	5/8"
4-332	4-342	18"	5/8"	5/8"	5/8"
4-334	4-344	18"	5/8"	5/8"	5/8"
4-336	4-346	18"	5/8"	5/8"	5/8"
4-338	4-348	18"	5/8"	5/8"	5/8"
4-340	4-350	18"	5/8"	5/8"	5/8"
4-342	4-352	18"	5/8"	5/8"	5/8"
4-344	4-354	18"	5/8"	5/8"	5/8"
4-346	4-356	18"	5/8"	5/8"	5/8"
4-348	4-358	18"	5/8"	5/8"	5/8"
4-350	4-360	18"	5/8"	5/8"	5/8"
4-352	4-362	18"	5/8"	5/8"	5/8"
4-354	4-364	18"	5/8"	5/8"	5/8"
4-356	4-366	18"	5/8"		



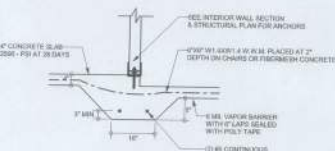
F1 S-2
MONOLITHIC FOOTING
SCALE: 1/2" = 1'-0"



F5 S-2
PORCH FOOTING
SCALE: 1/2" = 1'-0"

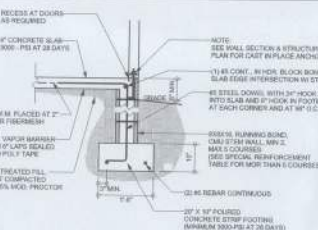


F2 S-2
INTERIOR BEARING FOOTING
SCALE: 1/2" = 1'-0"

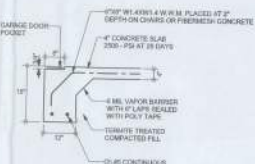


F3 S-2
INTERIOR BEARING STEP FOOTING
SCALE: 1/2" = 1'-0"

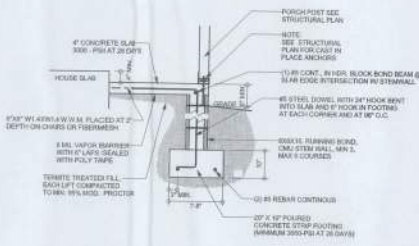
OPTIONAL
MONOLITHIC FOOTINGS



F1 S-2
STEM WALL FOOTING
SCALE: 1/2" = 1'-0"



F4 S-2
GARAGE DOOR FOOTING
SCALE: 1/2" = 1'-0"

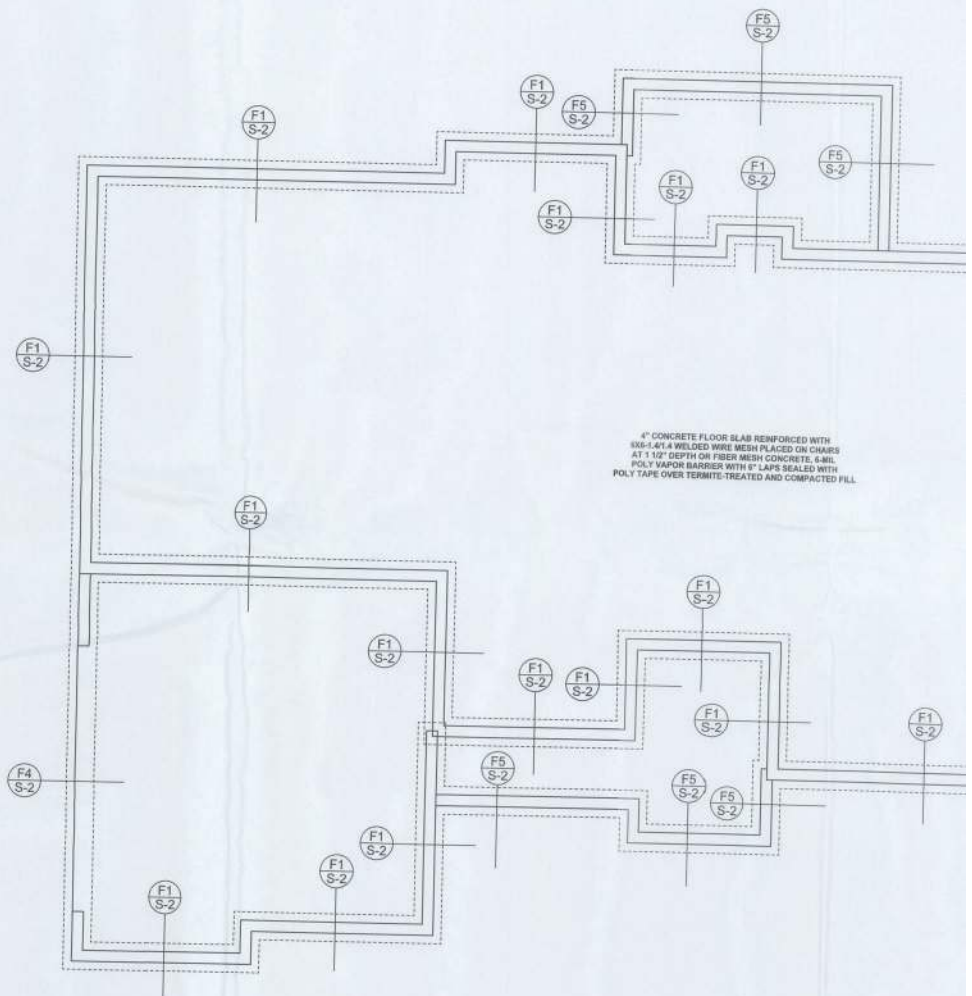


F5 S-2
STEM WALL PORCH FOOTING
SCALE: 1/2" = 1'-0"

TALL STEM WALL TABLE

The table assumes 60 psi indicating base soil of 1000 lb per sq ft and a footing and base 20" over the minimum size of the top. The vertical steel to be placed toward the tension side of the stem wall shall comply with the table provisions, within 2" of the exterior side of the wall. If the wall is over 4' high, add diagonal ladder reinforcement at 18" O.C. vertically in a horizontal plane with reinforcement as shown in the table below.

STEM WALL HEIGHT (FEET)	MINIMUM REBAR #	VERTICAL REINFORCEMENT FOR 4" CONCRETE FOOTING (INCHES O.C.)			VERTICAL REINFORCEMENT FOR 12" CONCRETE FOOTING (INCHES O.C.)		
		#5	#7	#8	#5	#7	#8
3.3	3.0	96	96	96	96	96	96
4.0	3.7	96	96	96	96	96	96
4.7	4.3	96	96	96	96	96	96
5.3	5.0	96	96	96	96	96	96
6.0	5.7	40	80	96	96	96	96
6.7	6.3	32	56	80	56	96	96
7.3	7.0	24	40	40	56	80	96
8.0	7.7	16	32	48	32	64	80
8.7	8.3	8	24	32	24	48	64
9.3	9.0	8	16	24	16	40	48

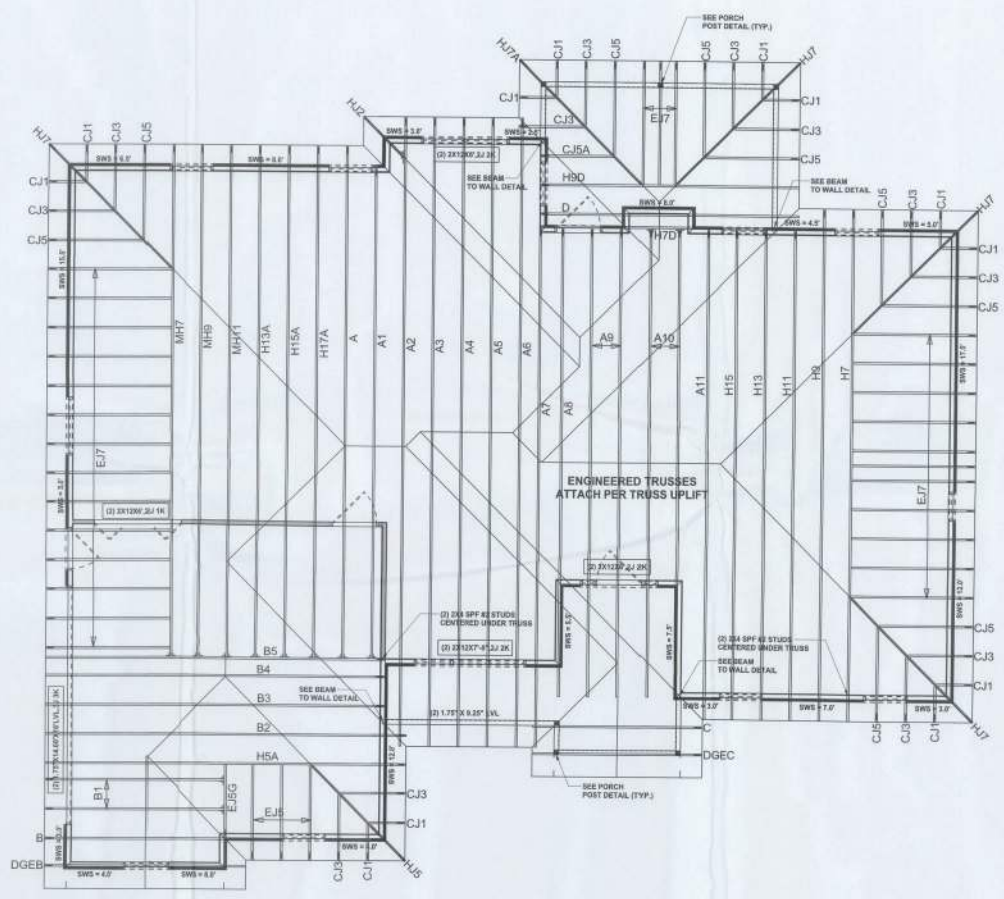


FOUNDATION PLAN
SCALE: 1/8" = 1'-0"
DIMENSIONS ON STRUCTURAL SHEETS ARE NOT EXACT. REFER TO ARCHITECTURAL FLOOR PLAN FOR ACTUAL DIMENSIONS

4" CONCRETE FLOOR SLAB REINFORCED WITH 3/8"-1x1x1 WELDED WIRE MESH PLACED ON CHAIRS AT 12" DEPTH ON FIBER MESH CONCRETE. 4-MIL POLY VAPOR BARRIER WITH 6" LAPS SEALED WITH POLY TAPE OVER TERMITE-TREATED AND COMPACTED FILL.

REVISIONS	

SOFTPLAN



STRUCTURAL PLAN
SCALE: 1/4" = 1'-0"

STRUCTURAL PLAN NOTES

- SN-1 ALL LOAD BEARING FRAME WALL & PORCH HEADERS SHALL BE A MINIMUM OF (3) 2X2 SP @ 16" O.C.
- SN-2 ALL LOAD BEARING FRAME WALL HEADERS SHALL HAVE (1) JACK STUD & (1) KING STUD EACH SIDE (MIN. O.C.)
- SN-3 DIMENSIONS ON STRUCTURAL SHEETS ARE NOT EXACT. REFER TO ARCHITECTURAL FLOOR PLAN FOR ACTUAL DIMENSIONS
- SN-4 PERMANENT TRUSS BRACING IS TO BE INSTALLED AT LOCATIONS AS SHOWN ON THE SEALED TRUSS DRAWINGS. LATERAL BRACING IS TO BE RETAINED PER BC301-01, BC304-01, BC308-02, & BC308-03. BC304-01, BC308-02, & BC308-03 ARE FURNISHED BY THE TRUSS SUPPLIER, WITH THE SEALED TRUSS PACKAGE.

WALL LEGEND

	EXTERIOR WALL
	INTERIOR NON-LOAD BEARING WALL
	INTERIOR LOAD BEARING WALL W/ NO UPLIFT
	INTERIOR LOAD BEARING WALL W/ UPLIFT

HEADER LEGEND

	HEADER BEAM CALL-OUT (H.K.O.)
	NUMBER OF KING STUDS (FULL LENGTH)
	NUMBER OF JACK STUDS (UNDER HEADER)
	SPAN OF HEADER
	SIZE OF HEADER MATERIAL
	NUMBER OF PLYS IN HEADER

TOTAL SHEAR WALL SEGMENTS

	REQUIRED	ACTUAL
TRANSVERSE	14.0'	15.0'
LONGITUDINAL	45.0'	46.5'

MARK DISWAY (PROFESSIONAL ENGINEER)
P.E. No. 5591-E, FLS 946, Lake City, FL
05/06, 05/04-05

DATE: 05/27/2014
TIME: 10:58:11 AM
FILE: S:\P\140424.dwg

DATE: 05/27/2014
TIME: 10:58:11 AM
FILE: S:\P\140424.dwg

DATE: 05/27/2014
TIME: 10:58:11 AM
FILE: S:\P\140424.dwg

Stanley Crawford Construction

McReynolds Residence

ADDRESS:
Lot 3 Meadow CDD
Crawford County, FL

Mark Dिसway P.E.
163 SW Midtown Place
Suite 103
Lake City, Florida 32025
Phone: (386) 754 - 5419
Fax: (386) 209 - 4871

PRINTED DATE:
Tuesday, May 27, 2014

DRAWN BY: STRUCTURUS, BY

FINAL DATE:
20May14

JOB NUMBER:
140424

DRAWING NUMBER:
S-3
OF 3 SHEETS