

GENERAL SPECIFICATIONS:

Materials: Aluminum Flat Faces
 DG in 3M 7725-12 Black Vinyl
 PMS 109 C yellow
 Cool Gray 5 background

Illumination:
 Principal street fighter POD LIGHT BAR

SQ FT 32

COLORS:

■ PMS 109 3M 7725-12 PMS Cool Gray 5

NOTE: Final dimensions to be determined by Final Engineering



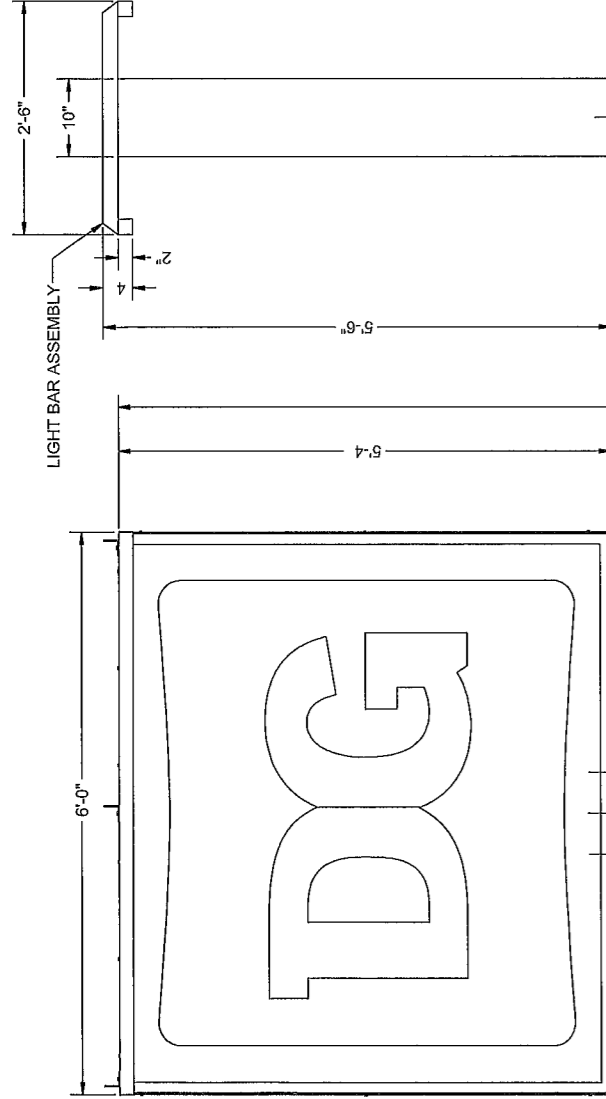
Everbrite, LLC.
 4949 S. 710th Street, Greenfield, WI 53228
 Phone: 414-529-3500 • Fax: 414-529-7191
 Website: www.everbrite.com

Part No: DG Pylon Light Bar
 Description: DG Pylon Light Bar

Project No: 528191-2
 Drawn By: DB/ERJ
 Date: 10/3/2025

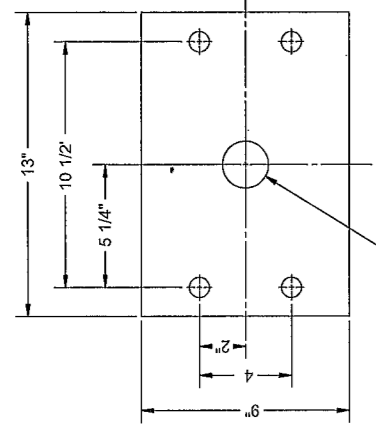
© 2005 Everbrite, LLC. All rights reserved. This document is confidential and proprietary to Everbrite, LLC. Any disclosure to a third party is expressly prohibited. Drawings are for specific purposes only and not intended for actual construction. For more specific manufacturing details, please refer to engineering specifications and master drawings.

DOLLAR GENERAL



(4) 3/4" DIA X 3 1/2" LONG
MTG. BOLT
(A325 HI-STRENGTH)

HSS 8 X 8 X 1/4
(PP532999H)
(P003142)



Ø2" ELECTRICAL HOLE
SIGN MTG. PATTERN
SCALE 1/4"

GENERAL NOTES
THIS SIGN IS INTENDED TO BE INSTALLED IN ACCORDANCE WITH THE REQUIREMENTS OF ARTICLE 600 OF THE NATIONAL ELECTRIC CODE AND/OR OTHER APPLICABLE LOCAL CODES. THIS INCLUDES PROPER GROUNDING AND BONDING OF THE SIGN AND INSTALLING DISCONNECT SWITCHES IF NOT FACTORY INSTALLED ON THE SIGN. SIGN ASSEMBLY IS INTENDED FOR OUTDOOR WET LOCATION. INSTALLER TO VERIFY SIGNS ARE PROPERLY INSTALLED, CONNECTED AND GROUNDING.
THIS DRAWING IS FOR INSTALLATION PURPOSES ONLY AND NOT TO BE USED FOR MANUFACTURING.
LIFTING HOLE NOTE
ANY LIFTING HOLES CREATED ARE THE RESPONSIBILITY OF THE INSTALLER. LIFTING HOLES ARE TO BE SEALED BY A CAP PLATE, WELDED OVER TO COVER AND THEN PAINTED.
WELDING NOTE
ANY REQUIRED WELDING IS TO BE COMPLETED BY AN AWS CERTIFIED WELDER QUALIFIED IN THE APPLICABLE POSITIONS NEEDED. PROOF OF WELDER CERTIFICATION REQUIRED (COPY OF WELDER CERTIFICATION PHOTO OF AWS CERTIFICATION CARD OF PERSON DOING THE WELDING).
PHOTO REQUIREMENTS
INSTALLER TO PROVIDE COMPLETION PHOTOS OF THE FOLLOWING:

- MATCH PLATE/SIGN CONNECTIONS
- BEFORE AND AFTER PHOTOS OF ALL PLUG WELDS, CAP PLATE WELDS, AND ANY OTHER WELDED CONNECTIONS DONE IN THE FIELD
- ELECTRICAL WIRING
- ALL SIGNS ILLUMINATING (PREFERABLY SHOWING LED'S OR LAMPS ILLUMINATING)
- OVERALL ELEVATION

INSTALLATION INSTRUCTIONS

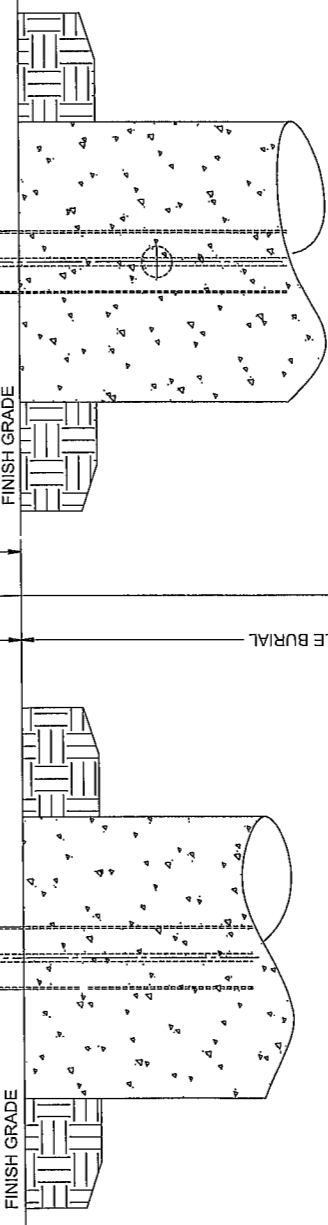
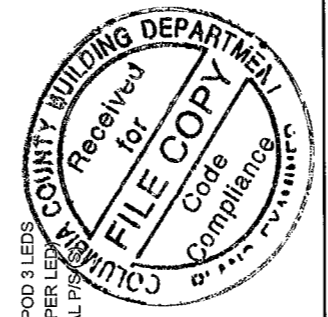
- MOUNT SIGNAGE TO POLE(S) (INSTALLER TO PROVIDE WIRE BETWEEN SIGN AND BASE OF POLE)
- MAKE FINAL ELECTRICAL HOOK-UP (ALL ELECTRICAL TO MEET LOCAL CODES)
- TEST SIGNAGE FOR PROPER FUNCTION AND LIGHTING
- REMOVE ANY LIFTING BRACKETS AND REINSTALL BOLTS
- CLEAN UP AREA AND REMOVE ANY PACKING MATERIAL. DO NOT DISCARD ANY MATERIAL OR DEBRIS INTO ON SITE DUMPSTERS

EVERBRITE TO FURNISH

- 5'-4" X 6'-0" SIGN
- MOUNTING POLE
- ALL MOUNTING HARDWARE

INSTALLER TO FURNISH
 ALL ELECTRICAL COMPONENTS REQD
 GENERAL CONTRACTOR TO FURNISH
 PRIMARY WIRES FROM BUILDING TO SIGN

ELECTRICAL SPECIFICATIONS:
 6'-4" X 6'-0" SIGN
 LEDS: (62) PRINCIPAL STREET FIGHTER POD 3 LEDS
 TOTAL DRAW 81.84 WATTS (1.32 WATTS PER LED)
 POWER SUPPLY (1) 12V 120W PRINCIPAL PIS
 MOUNTED INSIDE SIGN
 AREA: 32 SQ. FT
 ESTIMATED WEIGHT: 353 LBS
POLE SPECIFICATIONS:
 TOTAL POLE WEIGHT: 572 LBS
 BURIED POLE LENGTH: 6'-6"
 EXPOSED POLE LENGTH: 14'-8"
 TOTAL POLE LENGTH: 21'-2"



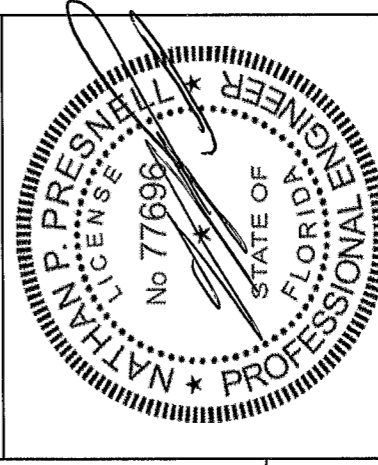
FRONT ELEVATION
SCALE 1/12

SIDE ELEVATION
SCALE 1/12

SIGN TO BE CONSTRUCTED TO 2020 NEC 600 STANDARD
 SIGN TO BEAR UL LABEL
 SIGN TO HAVE ELECTRICAL DISCONNECT ON THE EXTERIOR

FLORIDA BUILDING CODE,
8th EDITION (2023)
SECTION 16 WIND LOAD, ASCE 7-22
120 MPH WIND LOAD, V_{ULT}
RISK CATEGORY II
EXPOSURE C

ENCON SERVICES, INC.
1246 ACAPPELLA LN.
APOLLO BEACH, FL 33572
813-655-3373, FLEB #9394



NATHAN P. PRESNELL, PE 77696
DATE SIGNED: 3/6/2026

TITLE: [HWL]
DOLLAR GENERAL
14'-8" EXPOSED POLE FOR,
5'-4" X 6'-0" SIGN @ 20'-0" OAH

DRAWN BY	TECHNO-MCM
DATE	01/28/2026
CHECKED BY	CJB
DATE	01/28/2026

PROJECT NO: 532999
 DRAWING NO: IN532999H
 REV: A

INSTALLATION DRAWING

THESE DRAWINGS ARE THE EXCLUSIVE PROPERTY OF EVERBRITE, LLC. USE OF OR DUPLICATION IN ANY MANNER WITHOUT EXPRESS WRITTEN PERMISSION OF EVERBRITE, LLC IS PROHIBITED.

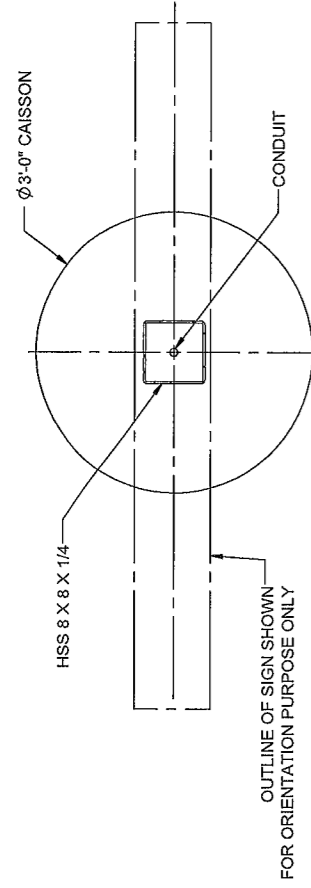
Everbrite
 4949 SO. 110TH ST
 GREENFIELD, WI 53220
 414-528-3500

SITE: Dollar General
 4924 NW US Highway 41
 Lake City, FL 32055

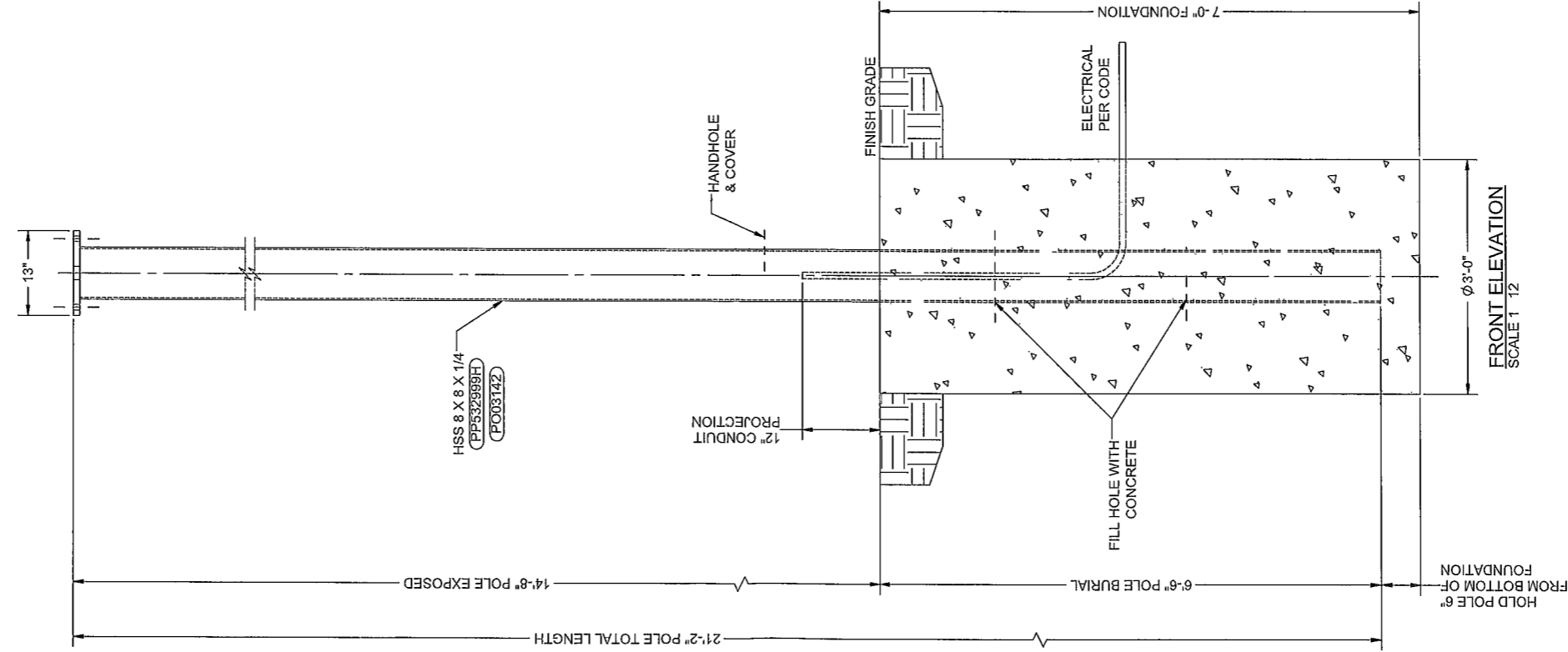
SCALE: AS SHOWN SHEET: 1 OF 3

REV	DATE	MCM	CJB	CHK	DESCRIPTION
A	01/28/2026				RELEASED FOR INSTALLATION

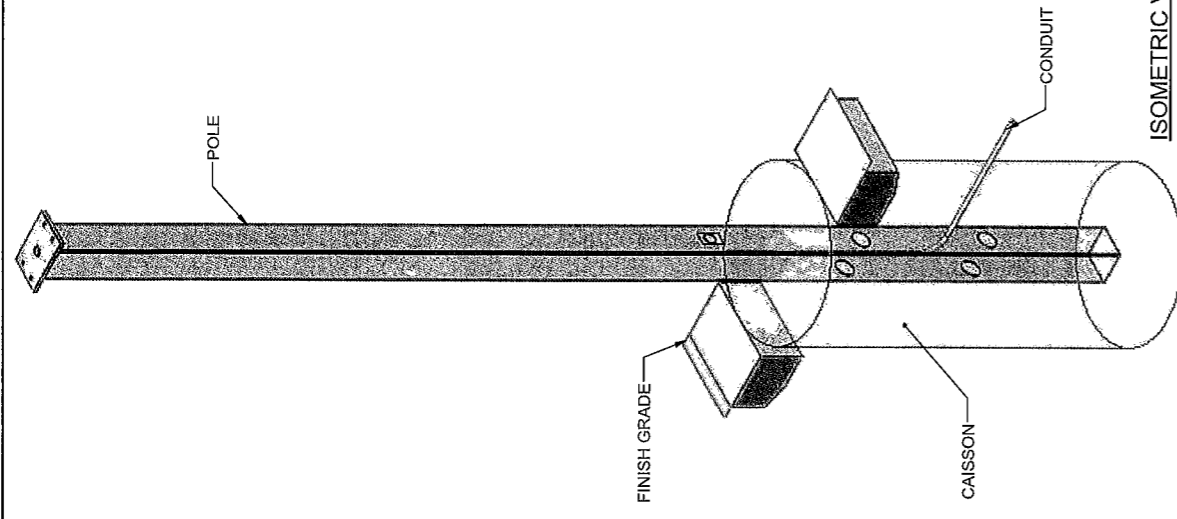
INSTALLER NOTE: POLE & CONDUIT ARE IS CENTERED ON Ø3'-0" CAISSON



FOUNDATION TOP VIEW
SCALE 1:12



FRONT ELEVATION
SCALE 1:12



ISOMETRIC VIEW

GENERAL NOTES

THIS SIGN IS INTENDED TO BE INSTALLED IN ACCORDANCE WITH THE REQUIREMENTS OF ARTICLE 600 OF THE NATIONAL ELECTRIC CODE AND/OR OTHER APPLICABLE LOCAL CODES. THIS INCLUDES PROPER GROUNDING AND BONDING OF THE SIGN AND INSTALLING DISCONNECT SWITCHES IF NOT FACTORY INSTALLED ON THE SIGN. THIS DRAWING IS FOR INSTALLATION PURPOSES ONLY AND NOT TO BE USED FOR MANUFACTURING.

CONCRETE SPECIFICATION

THE REQUIRED 1.83 CU YDS OF FOUNDATION CONCRETE SHALL HAVE A MIN. COMPRESSIVE STRENGTH OF 3,000 PSI @ 28 DAYS. REINFORCING STEEL SHALL HAVE A MIN. YIELD STRENGTH OF 60,000 PSI. RECOMMENDED MIN. CURE TIME OF 7 DAYS BEFORE PROCEEDING WITH INSTALLATION.

DESIGN NOTE

CONCRETE BASE DESIGNED USING A LATERAL SOIL BEARING CAPACITY OF 160 PSF / FT. OF DEPTH. IF THESE SOIL CONDITIONS DO NOT EXIST AT THE FOUNDATION LOCATION, IT IS THE INSTALLER'S RESPONSIBILITY TO NOTIFY EVERBRITE, LLC PRIOR TO PERFORMING ADDITIONAL EXCAVATION OR ANY CONCRETE PLACEMENT.

INSTALLATION INSTRUCTIONS

1. CONFIRM LOCATION OF THE FOUNDATION WITH ACCOUNT MANAGER AND SITE PLAN.
2. CONTACT THE LOCAL AUTHORITY ON 8-1-1 UTILITY LOCATING SERVICE AT LEAST 3-BUSINESS DAYS BEFORE ANY EXCAVATION BEGINS.
3. MARK THE LOCATION OF THE FOUNDATION AND CONFIRM NO UTILITIES WILL OBSTRUCT THE FOUNDATION OR SIGN STRUCTURE ONCE ERRECTED. IF A CONFLICT IS FOUND, CONTACT EVERBRITE IMMEDIATELY FOR DIRECTION ON HOW TO PROCEED.
4. CONFIRM HEIGHT OF FINAL GRADE ON SITE BASED ON EXISTING CONDITIONS.
5. ONCE FOUNDATION LOCATION IS APPROVED AND NO OBSTRUCTIONS ARE FOUND, EXCAVATE THE FOUNDATION TO THE SIZE INDICATED AND REMOVE SPOILS FROM SITE UNLESS DIRECTED OTHERWISE BY EVERBRITE.
6. TAKE PHOTO SHOWING EXCAVATED HOLE.
7. SET ANY FORMS THAT MAY BE REQUIRED TO ACHIEVE THE REQUIRED FOUNDATION HEIGHT ABOVE FINAL GRADE.
8. SET POLE & ELECTRICAL CONDUIT STUBS AS ILLUSTRATED.
9. ENSURE POLE AND CONDUIT ARE SET TO THE REQUIRED HEIGHT, PLUMB AND CENTERED IN THE FOUNDATION AND ORIENTED IN THE CORRECT POSITION.
10. TAKE PHOTO SHOWING HOLE, CONDUIT, AND ANY FORMS SET PRIOR TO POURING CONCRETE.
11. POUR CONCRETE AND SMOOTH THE TOP SURFACE.
12. TAKE PHOTO SHOWING POURED FOUNDATION.
13. ALLOW RECOMMENDED CURE TIME FOR THE CONCRETE BEFORE SETTING POLES/CABINETS.

EVERBRITE TO FURNISH

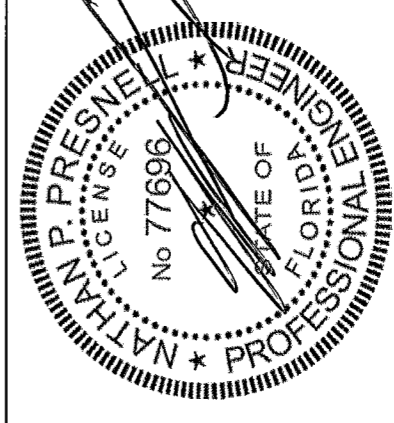
MOUNTING POLE

INSTALLER TO FURNISH

1. ALL ELECTRICAL COMPONENTS REQUIRED
2. FOUNDATION

GENERAL CONTRACTOR TO FURNISH

PRIMARY WIRES FROM BUILDING TO SIGN



ENCON SERVICES, INC.
1246 ACAPPELLA LN.
APOLLO BEACH, FL 33572
813-655-3373, FLEB #9394

NATHAN P. PRESNELL, PE 77696
DATE SIGNED: 3/6/2026

DRAWN BY	TECHNO-MCM
DATE	01/28/2026
CHECKED BY	CJB
DATE	01/28/2026

TITLE	DOLLAR GENERAL 14'-8" EXPOSED POLE FOR, 5'-4" X 6'-0" SIGN @ 20'-0" OAH
-------	---

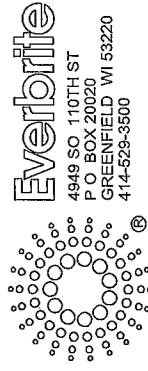
REV	DATE	BY	CHK	DESCRIPTION
A	01/28/2026	MCM	CJB	RELEASED FOR INSTALLATION

PROJECT NO	532999
DRAWING NO	FD532999H
REV	A

SITE	Dollar General 4924 NW US Highway 41 Lake City, FL 32055
SCALE	AS SHOWN
SHEET	2 OF 3

FOUNDATION DRAWING

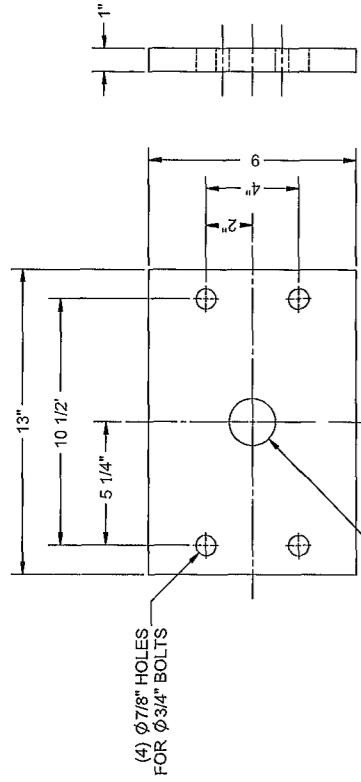
THESE DRAWINGS ARE THE EXCLUSIVE PROPERTY OF EVERBRITE, LLC. USE OF OR DUPLICATION IN ANY MANNER WITHOUT EXPRESS WRITTEN PERMISSION OF EVERBRITE, LLC IS PROHIBITED.



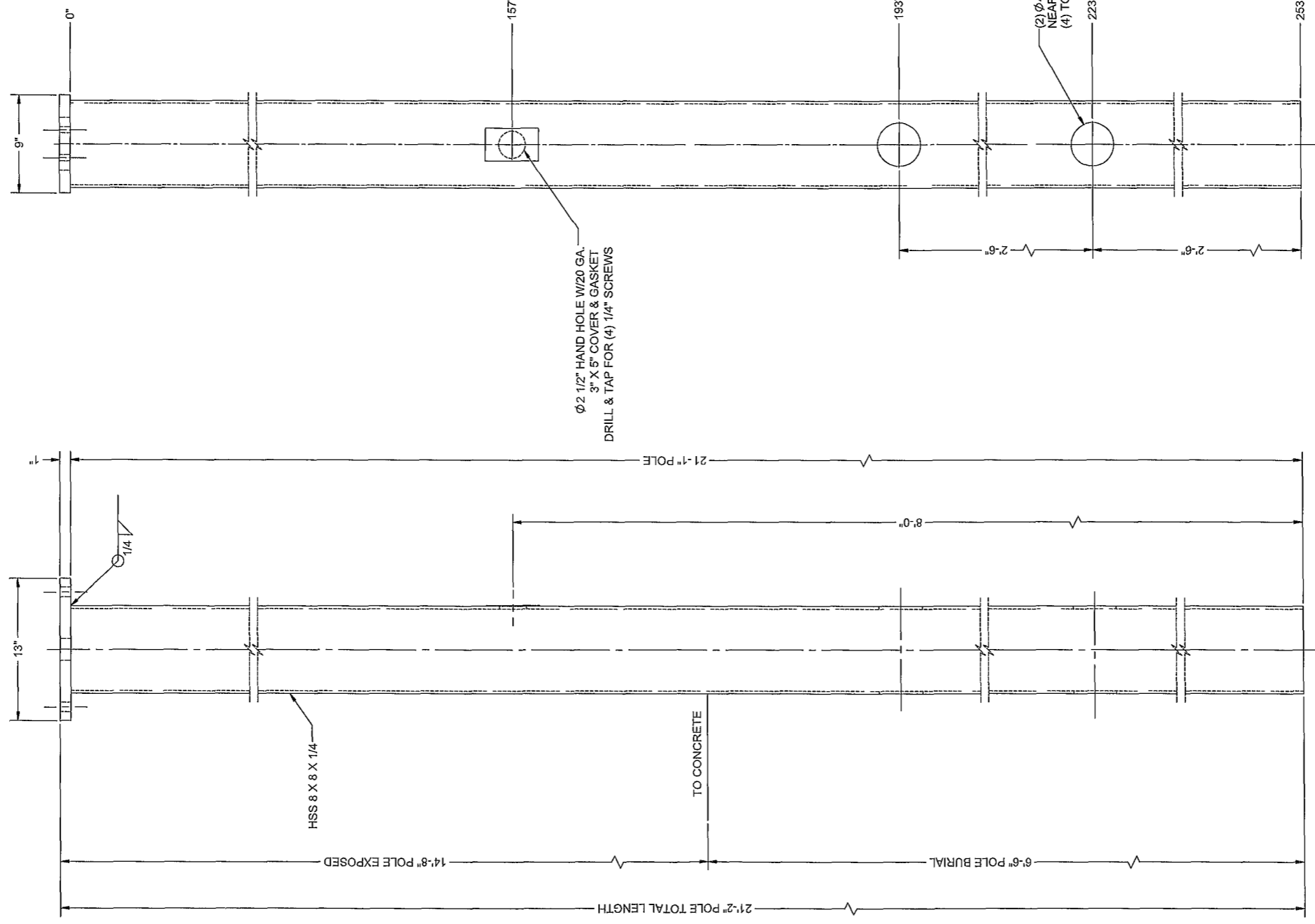
MATERIAL SPECIFICATIONS
 1. ALL PLATES TO BE ASTM A36
 2. ALL TUBE STEEL TO BE A500 GRADE B

FINISH
 POLE FINISH PER CUSTOMER SPEC

POLE SPECIFICATIONS:
 TOTAL POLE WEIGHT: 572 LBS
 BURIED POLE LENGTH: 6'-6"
 EXPOSED POLE LENGTH: 14'-8"
 TOTAL POLE LENGTH: 21'-2"



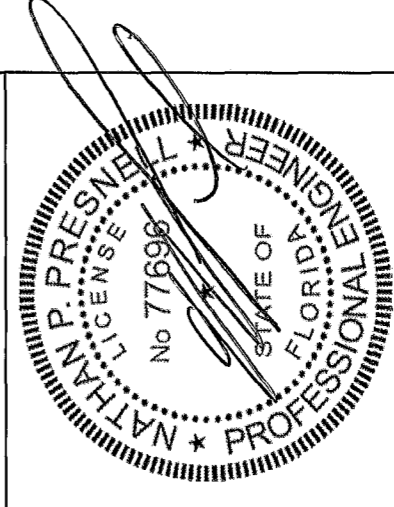
MATCH PLATE DETAIL
 SCALE 1/4



POLE ASSEMBLY FRONT VIEW
 SCALE 1/6

Ø 2 1/2" HAND HOLE W/20 GA.
 3" X 5" COVER & GASKET
 DRILL & TAP FOR (4) 1/4" SCREWS

(2) Ø 4" CONCRETE FILL HOLE
 NEAR SIDE AND FAR SIDE
 (4) TOTAL



ENCON SERVICES, INC.
 1246 ACAPPELLA LN.
 APOLLO BEACH, FL 33572
 813-655-3373, FLEB #9394

NATHAN P. PRESNELL, PE 77696
 DATE SIGNED: 3/6/2026

TITLE
 DOLLAR GENERAL
 14'-8" EXPOSED POLE FOR,
 5'-4" X 6'-0" SIGN @ 20'-0" OAH

DRAWN BY: TECHNO-MCM
 DATE: 01/28/2026
 CHECKED BY: CJB
 DATE: 01/28/2026

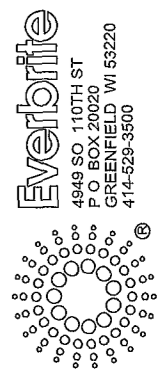
REV	DATE	BY	CHK	DESCRIPTION
A	01/28/2026	MCM	CJB	RELEASED FOR INSTALLATION

PROJECT NO: 532999
 DRAWING NO: PP532999H/PO03142
 BY / KT: 188-XXXXX
 REV: A

Dollar General
 4924 NW US Highway 41
 Lake City, FL 32055

AS SHOWN
 SHEET: 3 OF 3

FABRICATION DRAWING
 THESE DRAWINGS ARE THE EXCLUSIVE PROPERTY OF EVERBRITE, LLC. USE OF, OR DUPLICATION IN ANY MANNER WITHOUT EXPRESS WRITTEN PERMISSION OF EVERBRITE, LLC IS PROHIBITED.



EnCon Services, Inc.

Sign Design Calculations

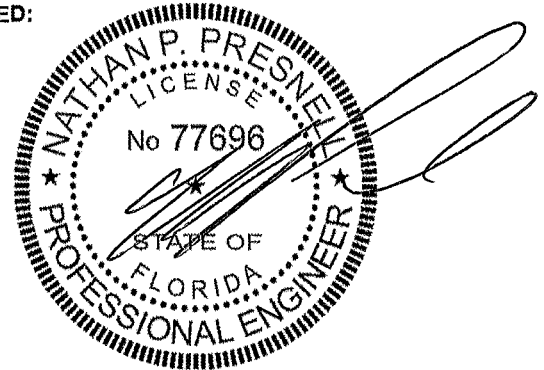
Job Description
 Dollar General
 4924 NW US Highway 41
 Lake City, FL 32055
 5'-4" x 6'-0" Pylon 20'-0" OAH
 Design per Florida Building Code, 8th Edition (2023),
 Section 16 Wind Load, ASCE 7-22, Load Case D + 0 6W

PREPARED BY
 EnCon Services, Inc , FLEB #9394
 1246 Acappella Ln , Apollo Beach, FL 33572
 813-655-3373
 Nathan P Presnell, PE 77696

DATE SIGNED:
 3/6/2026

Risk Category II

Kzt 1
 Exposure C
 Kd 0.85
 Kz 0.9
 V_{ULT} 120 mph
 Cf 1.80
 G 0.85
 Number of Poles 1
 Ult Wind Pressure (PSF) 43



Sign	Area (sf)	Distance to Center (ft)	P = Force (lb)	Moment (ft-lb)
Top	32.04	17.33	828	14343
			0	0
			0	0
Pole	9.83	7.34	254	1862
		Totals	1,082	16,205

Required Flexural Strength (kip-ft) 16.2 per pole
 Provided Flexural Strength (kip-ft) 44.10 HSS 8"x8"x1/4" A500 B Steel Tube
 Flexural Ratio 0.37

Base Design

Number of Bases 1
 Diagonal B (FT) 3.00
 Lateral soil pressure (LB/SF/FT) 150
 Depth (Estimated) (FT) 7
 S1 700
 Design Depth (FT) 5.08 Ft

Base Size Required
 7.0 FT Deep
 3.0 FT Diameter