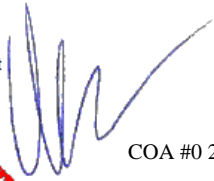


This document has been electronically signed using a Digital Signature. Printed copies without an original signature must be verified using the original electronic version.




Alpine, an ITW Company
 155 Harlem Ave
 North Building, 4th Floor
 Glenview, IL 60025
 Phone: (800)755-6001
 www.alpineitw.com

COA #0 278

Florida Certificate of Product Approval #FL 1999
 04/07/2023



| Site Information: | Page 1: |
|---|---------------------|
| Customer: W. B. Howland Company, Inc. | Job Number: 23-9209 |
| Job Description: Hendrickx Addtn | |
| Address: 374 SW Ainsley Glen, LAKE CITY, FL 32024 | |

| Job Engineering Criteria: | |
|---|--|
| Design Code: FBC 7th Ed. 2020 Res. | IntelliVIEW Version: 22.02.00 JRef #: 1XON2150005 |
| Wind Standard: ASCE 7-16 Wind Speed (mph): 130 | Design Loading (psf): 40.00 |
| Building Type: Closed | |

This package contains general notes pages, 7 truss drawing(s) and 2 detail(s).

| Item | Drawing Number | Truss |
|------|-------------------|-------|
| 1 | 097.23.1205.09640 | A01 |
| 3 | 097.23.1205.26723 | A03 |
| 5 | 097.23.1205.30113 | J01 |
| 7 | 097.23.1205.33433 | J03 |
| 9 | GBLLETIN0118 | |

| Item | Drawing Number | Truss |
|------|-------------------|-------|
| 2 | 097.23.1205.10730 | A02 |
| 4 | 097.23.1205.28830 | HJ01 |
| 6 | 097.23.1205.31257 | J02 |
| 8 | A14015ENC160118 | |

General Notes

Truss Design Engineer Scope of Work, Design Assumptions and Design Responsibilities:

The design responsibilities assumed in the preparation of these design drawings are those specified in ANSI/TPI 1, Chapter 2; and the National Design Standard for Metal Plate Connected Wood Truss Construction, by the Truss Plate Institute. The truss component designs conform to the applicable provisions of ANSI/TPI 1 and NDS, the National Design Specification for Wood Construction by AWC. The truss component designs are based on the specified loading and dimension information furnished by others to the Truss Design Engineer. The Truss Design Engineer has no duty to independently verify the accuracy or completeness of the information provided by others and may rely on that information without liability. The responsibility for verification of that information remains with others neither employed nor controlled by the Truss Design Engineer. The Truss Design Engineer's seal and signature on the attached drawings, or cover page listing these drawings, indicates acceptance of professional engineering responsibility solely for the truss component designs and not for the technical information furnished by others which technical information and consequences thereof remain their sole responsibility.

The suitability and use of these drawings for any particular structure is the responsibility of the Building Designer in accordance with ANSI/TPI 1 Chapter 2. The Building Designer is responsible for determining that the dimensions and loads for each truss component match those required by the plans and by the actual use of the individual component, and for ascertaining that the loads shown on the drawings meet or exceed applicable building code requirements and any additional factors required in the particular application. Truss components using metal connector plates with integral teeth shall not be placed in environments that will cause the moisture content of the wood in which plates are embedded to exceed 19% and/or cause corrosion of connector plates and other metal fasteners.

The Truss Design Engineer shall not be responsible for items beyond the specific scope of the agreed contracted work set forth herein, including but not limited to: verifying the dimensions of the truss component, calculation of any of the truss component design loads, inspection of the truss components before or after installation, the design of temporary or permanent bracing and their attachment required in the roof and/or floor systems, the design of diaphragms or shear walls, the design of load transfer connections to and from diaphragms and shear walls, the design of load transfer to the foundation, the design of connections for truss components to their bearing supports, the design of the bearing supports, installation of the truss components, observation of the truss component installation process, review of truss assembly procedures, sequencing of the truss component installation, construction means and methods, site and/or worker safety in the installation of the truss components and/or its connections.

This document may be a high quality facsimile of the original engineering document which is a digitally signed electronic file with third party authentication. A wet or embossed seal copy of this engineering document is available upon request.

Temporary Lateral Restraint and Bracing:

Temporary lateral restraint and diagonal bracing shall be installed according to the provisions of BCSI chapters B1, B2, B7 and/or B10 (Building Component Safety Information, by TPI and SBCA), or as specified by the Building Designer or other Registered Design Professional. The required locations for lateral restraint and/or bracing depicted on these drawings are only for the permanent lateral support of the truss members to reduce buckling lengths, and do not apply to and may not be relied upon for the temporary stability of the truss components during their installation.

Permanent Lateral Restraint and Bracing:

The required locations for lateral restraint or bracing depicted on these drawings are for the permanent lateral support of the truss members to reduce buckling lengths. Permanent lateral support shall be installed according to the provisions of BCSI chapters B3, B7 and/or B10, or as specified by the Building Designer or other Registered Design Professional. These drawings do not depict or specify installation/erection bracing, wind bracing, portal bracing or similar building stability bracing which are parts of the overall building design to be specified, designed and detailed by the Building Designer.

Connector Plate Information:

Alpine connector plates are made of ASTM A653 or ASTM A1063 galvanized steel with the following designations, gauges and grades: W=Wave, 20ga, grade 40; H=High Strength, 20ga, grade 60; S=Super Strength, 18ga, grade 60. Information on model code compliance is contained in the ICC Evaluation Service report ESR-1118, available on-line at www.icc-es.org.

Fire Retardant Treated Lumber:

Fire retardant treated lumber must be properly re-dried and maintained below 19% or less moisture level through all stages of construction and usage. Fire retardant treated lumber may be more brittle than untreated lumber. Special handling care must be taken to prevent breakage during all handling activities.

General Notes (continued)

Key to Terms:

Information provided on drawings reflects a summary of the pertinent information required for the truss design. Detailed information on load cases, reactions, member lengths, forces and members requiring permanent lateral support may be found in calculation sheets available upon written request.

BCDL = Bottom Chord standard design Dead Load in pounds per square foot.

BCLL = Bottom Chord standard design Live Load in pounds per square foot.

CL = Certified lumber.

Des Ld = total of TCLL, TCDL, BCLL and BCDL Design Load in pounds per square foot.

FRT = Fire Retardant Treated lumber.

FRT-DB = D-Blaze Fire Retardant Treated lumber.

FRT-DC = Dricon Fire Retardant Treated lumber.

FRT-FP = FirePRO Fire Retardant Treated lumber.

FRT-FL = FlamePRO Fire Retardant Treated lumber.

FRT-FT = FlameTech Fire Retardant Treated lumber.

FRT-PG = PYRO-GUARD Fire Retardant Treated lumber.

g = green lumber.

HORZ(LL) = maximum Horizontal panel point deflection due to Live Load, in inches.

HORZ(TL) = maximum Horizontal panel point long term deflection in inches, due to Total Load, including creep adjustment.

HPL = additional Horizontal Load added to a truss Piece in pounds per linear foot or pounds.

Ic = Incised lumber.

FJ = Finger Jointed lumber.

L/# = user specified divisor for limiting span/deflection ratio for evaluation of actual L/defl value.

L/defl = ratio of Length between bearings, in inches, divided by the vertical Deflection due to creep, in inches, at the referenced panel point. Reported as 999 if greater than or equal to 999.

Loc = Location, starting location of left end of bearing or panel point (joint) location of deflection.

Max BC CSI = Maximum bending and axial Combined Stress Index for Bottom Chords for of all load cases.

Max TC CSI = Maximum bending and axial Combined Stress Index for Top Chords for of all load cases.

Max Web CSI = Maximum bending and axial Combined Stress Index for Webs for of all load cases.

NCBCLL = Non-Concurrent Bottom Chord design Live Load in pounds per square foot.

PL = additional Load applied at a user specified angle on a truss Piece in pounds per linear foot or pounds.

PLB = additional vertical load added to a Bottom chord Piece of a truss in pounds per linear foot or pounds

PLT = additional vertical load added to a Top chord Piece of a truss in pounds per linear foot or pounds.

PP = Panel Point.

R = maximum downward design Reaction, in pounds, from all specified gravity load cases, at the indicated location (Loc).

-R = maximum upward design Reaction, in pounds, from all specified gravity load cases, at the identified location (Loc).

Rh = maximum horizontal design Reaction in either direction, in pounds, from all specified gravity load cases, at the indicated location (Loc).

RL = maximum horizontal design Reaction in either direction, in pounds, from all specified non-gravity (wind or seismic) load cases, at the indicated location (Loc).

Rw = maximum downward design Reaction, in pounds, from all specified non-gravity (wind or seismic) load cases, at the identified location (Loc).

TCDL = Top Chord standard design Dead Load in pounds per square foot.

TCLL = Top Chord standard design Live Load in pounds per square foot.

U = maximum Upward design reaction, in pounds, from all specified non-gravity (wind or seismic) load cases, at the indicated location (Loc).

VERT(CL) = maximum Vertical panel point deflection in inches due to Live Load and Creep Component of Dead Load in inches.

VERT(CTL) = maximum Vertical panel point deflection ratios due to Live Load and Creep Component of Dead Load, and maximum long term Vertical panel point deflection in inches due to Total load, including creep adjustment.

VERT(LL) = maximum Vertical panel point deflection in inches due to Live Load.

VERT(TL) = maximum Vertical panel point long term deflection in inches due to Total load, including creep adjustment.

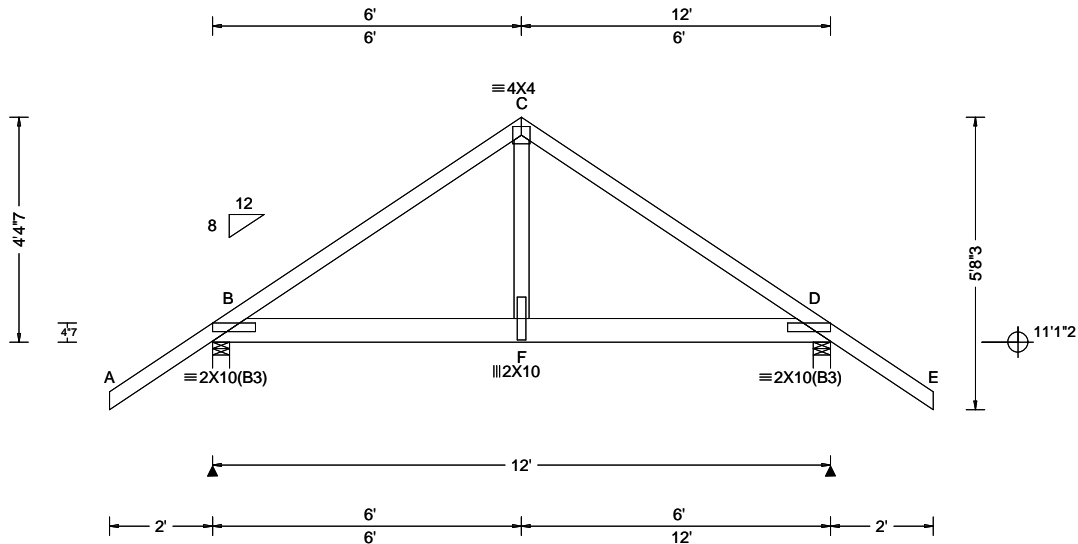
W = Width of non-hanger bearing, in inches.

Refer to ASCE-7 for Wind and Seismic abbreviations.

Uppercase Acronyms not explained above are as defined in TPI 1.

References:

1. AWC: American Wood Council; 222 Catoclin Circle SE, Suite 201; Leesburg, VA 20175; www.awc.org.
2. ICC: International Code Council; www.iccsafe.org.
3. Alpine, a division of ITW Building Components Group Inc.: 155 Harlem Ave, North Building, 4th Floor, Glenview, IL 60025; www.alpineitw.com.
4. TPI: Truss Plate Institute, 2670 Crain Highway, Suite 203, Waldorf, MD 20601; www.tpinst.org.
5. SBCA: Wood Truss Council of America, 6300 Enterprise Lane, Madison, WI 53719; www.sbcacomponents.com.



| | | | | |
|--|---|--|--|--|
| Loading Criteria (psf) TCLL: 20.00 TCDL: 10.00 BCLL: 0.00 BCDL: 10.00 Des Ld: 40.00 NCBCLL: 10.00 Soffit: 2.00 Load Duration: 1.25 Spacing: 24.0 " | Wind Criteria Wind Std: ASCE 7-16 Speed: 130 mph Enclosure: Closed Risk Category: II EXP: C Kzt: NA Mean Height: 15.00 ft TCDL: 5.0 psf BCDL: 5.0 psf MWFRS Parallel Dist: 0 to h/2 C&C Dist a: 3.00 ft Loc. from endwall: not in 4.50 ft GCp: 0.18 Wind Duration: 1.60 | Snow Criteria (Pg,Pf in PSF) Pg: NA Ct: NA CAT: NA Pf: NA Ce: NA Lu: NA Cs: NA Snow Duration: NA Building Code: FBC 7th Ed. 2020 Res. TPI Std: 2014 Rep Fac: Varies by Ld Case FT/RT:20(0)/10(0) Plate Type(s): WAVE | Defl/CSI Criteria PP Deflection in loc L/defl L/# VERT(LL): 0.019 F 999 240 VERT(CL): 0.039 F 999 180 HORZ(LL): 0.006 D - - HORZ(TL): 0.012 D - - Creep Factor: 2.0 Max TC CSI: 0.380 Max BC CSI: 0.247 Max Web CSI: 0.236 VIEW Ver: 22.02.00.0914.12 | ▲ Maximum Reactions (lbs) Gravity Non-Gravity Loc R+ /R- /Rh /Rw /U /RL B 1085 /- /- /- /194 /- D 1088 /- /- /- /194 /- Wind reactions based on MWFRS B Brg Wid = 4.0 Min Req = 1.5 (Truss) D Brg Wid = 4.0 Min Req = 1.5 (Truss) Bearings B & D are a rigid surface. Members not listed have forces less than 375# Maximum Top Chord Forces Per Ply (lbs) Chords Tens.Comp. Chords Tens. Comp. B - C 212 - 1321 C - D 212 - 1321 Maximum Bot Chord Forces Per Ply (lbs) Chords Tens.Comp. Chords Tens. Comp. B - F 1020 - 147 F - D 1020 - 147 Maximum Web Forces Per Ply (lbs) Webs Tens.Comp. C - F 621 0 |
|--|---|--|--|--|

Lumber

Top chord: 2x4 SP #2;
Bot chord: 2x6 SP #2;
Webs: 2x4 SP #3;

Special Loads

----(Lumber Dur.Fac.=1.25 / Plate Dur.Fac.=1.25)
TC: From 64 plf at -2.00 to 64 plf at 14.00
BC: From 5 plf at -2.00 to 5 plf at 0.00
BC: From 20 plf at 0.00 to 20 plf at 12.00
BC: From 5 plf at 12.00 to 5 plf at 14.00
TC: 388 lb Conc. Load at 6.00
BC: 501 lb Conc. Load at 6.03

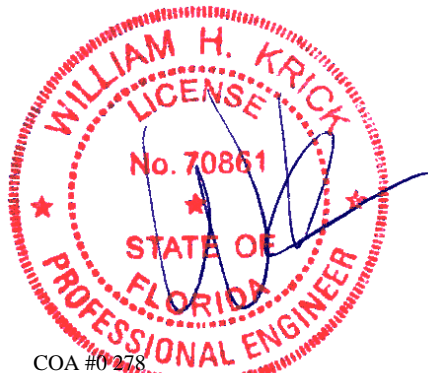
Wind

Wind loads and reactions based on MWFRS.
Wind loading based on both gable and hip roof types.

Additional Notes

The overall height of this truss excluding overhang is 4-4-7.

It is the responsibility of the Building Designer and Truss Fabricator to review this drawing prior to cutting lumber to verify that all data, including dimensions and loads, conform to the architectural plans/specifications and fabricators truss layout.

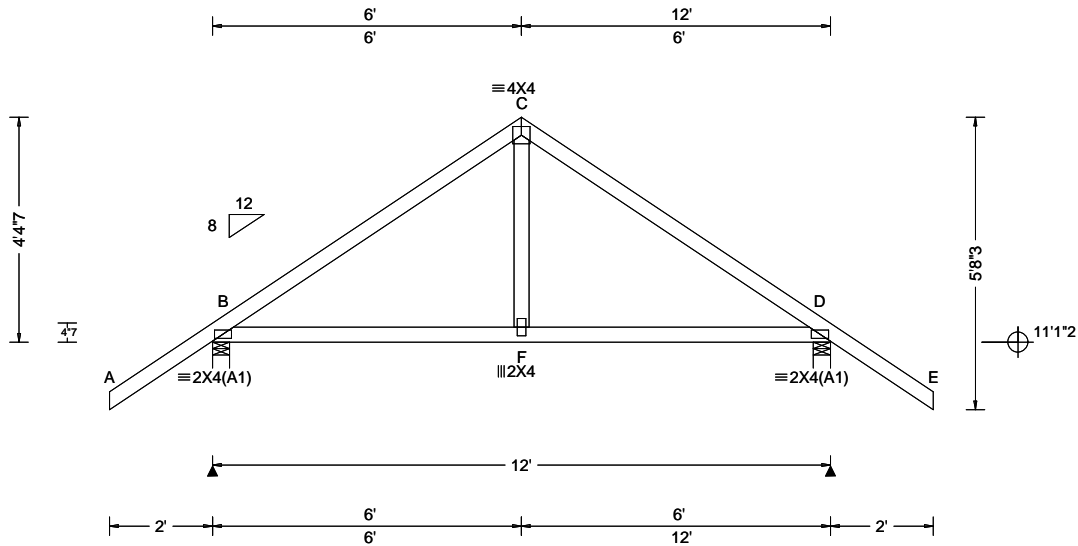


COA #0278

04/07/2023 Florida Certificate of Product Approval #FL 1999

****WARNING** READ AND FOLLOW ALL NOTES ON THIS DRAWING!**
****IMPORTANT** FURNISH THIS DRAWING TO ALL CONTRACTORS INCLUDING THE INSTALLERS**
Trusses require extreme care in fabricating, handling, shipping, installing and bracing. Refer to and follow the latest edition of BCSI (Building Component Safety Information, by TPI and SBCA) for safety practices prior to performing these functions. Installers shall provide temporary bracing per BCSI. Unless noted otherwise, top chord shall have properly attached structural sheathing and bottom chord shall have a properly attached rigid ceiling. Locations shown for permanent lateral restraint of webs shall have bracing installed per BCSI sections B3, B7, or B10, as applicable. Apply plates to each face of truss and position as shown above and on the Joint Details, unless noted otherwise. Refer to drawings 160A-Z for standard plate positions. Refer to job's General Notes page for additional information.
Alpine, a division of ITW Building Components Group Inc. shall not be responsible for any deviation from this drawing, any failure to build the truss in conformance with ANSI/TPI 1, or for handling, shipping, installation and bracing of trusses. A seal on this drawing or cover page listing this drawing, indicates acceptance of professional engineering responsibility solely for the design shown. The suitability and use of this drawing for any structure is the responsibility of the Building Designer per ANSI/TPI 1 Sec.2.
For more information see these web sites: Alpine: alpineitw.com; TPI: tpinst.org; SBCA: sbcacomponents.com; ICC: iccsafe.org; AWC: awc.org





| | | | | |
|---|---|---|---|---|
| Loading Criteria (psf) | Wind Criteria | Snow Criteria (Pg,Pf in PSF) | Defl/CSI Criteria | ▲ Maximum Reactions (lbs) |
| TCLL: 20.00 TCDL: 10.00 BCLL: 0.00 BCDL: 10.00 Des Ld: 40.00 NCBCLL: 10.00 Soffit: 2.00 Load Duration: 1.25 Spacing: 24.0 " | Wind Std: ASCE 7-16 Speed: 130 mph Enclosure: Closed Risk Category: II EXP: C Kzt: NA Mean Height: 15.00 ft TCDL: 5.0 psf BCDL: 5.0 psf MWFRS Parallel Dist: 0 to h/2 C&C Dist a: 3.00 ft Loc. from endwall: Any GCpi: 0.18 Wind Duration: 1.60 | Pg: NA Ct: NA CAT: NA Pf: NA Ce: NA Lu: NA Cs: NA Snow Duration: NA Building Code: FBC 7th Ed. 2020 Res. TPI Std: 2014 Rep Fac: Yes FT/RT:20(0)/10(0) Plate Type(s): WAVE | PP Deflection in loc L/def L/# VERT(LL): 0.007 F 999 240 VERT(CL): 0.013 F 999 180 HORZ(LL): 0.003 D - - HORZ(TL): 0.006 D - - Creep Factor: 2.0 Max TC CSI: 0.388 Max BC CSI: 0.324 Max Web CSI: 0.098 VIEW Ver: 22.02.00.0914.12 | Gravity Non-Gravity Loc R+ /R- /Rh /Rw /U /RL B 642 -/- /- /426 /111 /181 D 642 -/- /- /426 /111 /- Wind reactions based on MWFRS B Brg Wid = 4.0 Min Req = 1.5 (Truss) D Brg Wid = 4.0 Min Req = 1.5 (Truss) Bearings B & D are a rigid surface. Members not listed have forces less than 375# Maximum Top Chord Forces Per Ply (lbs) Chords Tens.Comp. Chords Tens. Comp. B - C 261 -546 C - D 261 -546 |

Lumber

Top chord: 2x4 SP #2;
Bot chord: 2x4 SP #2;
Webs: 2x4 SP #3;

Wind

Wind loads based on MWFRS with additional C&C member design.
Wind loading based on both gable and hip roof types.

Additional Notes

The overall height of this truss excluding overhang is 4-4-7.



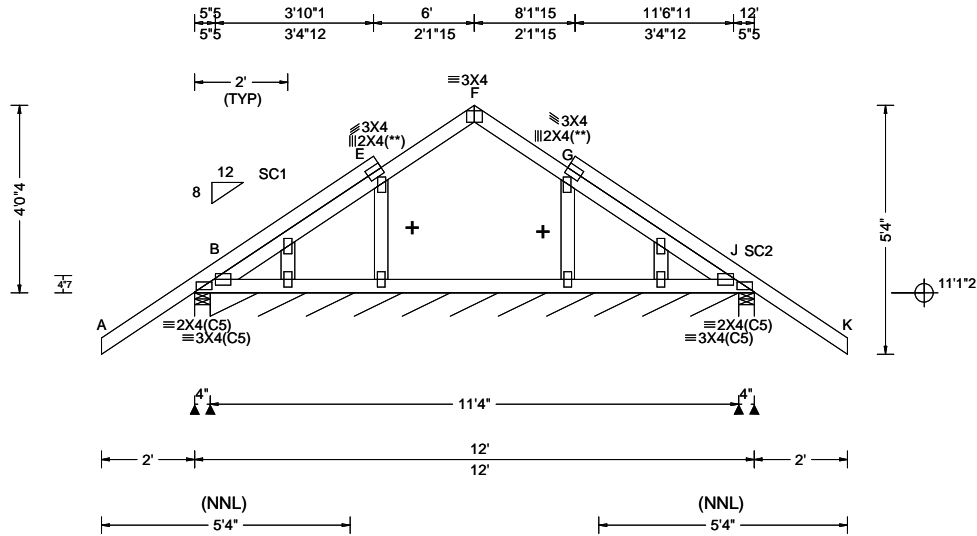
COA #0278

04/07/2023
Florida Certificate of Product Approval #FL 1999

****WARNING** READ AND FOLLOW ALL NOTES ON THIS DRAWING!**
****IMPORTANT** FURNISH THIS DRAWING TO ALL CONTRACTORS INCLUDING THE INSTALLERS**
Trusses require extreme care in fabricating, handling, shipping, installing and bracing. Refer to and follow the latest edition of BCSI (Building Component Safety Information, by TPI and SBCA) for safety practices prior to performing these functions. Installers shall provide temporary bracing per BCSI. Unless noted otherwise, top chord shall have properly attached structural sheathing and bottom chord shall have a properly attached rigid ceiling. Locations shown for permanent lateral restraint of webs shall have bracing installed per BCSI sections B3, B7, or B10, as applicable. Apply plates to each face of truss and position as shown above and on the Joint Details, unless noted otherwise. Refer to drawings 160A-Z for standard plate positions. Refer to job's General Notes page for additional information.
Alpine, a division of ITW Building Components Group Inc. shall not be responsible for any deviation from this drawing, any failure to build the truss in conformance with ANSI/TPI 1, or for handling, shipping, installation and bracing of trusses. A seal on this drawing or cover page listing this drawing, indicates acceptance of professional engineering responsibility solely for the design shown. The suitability and use of this drawing for any structure is the responsibility of the Building Designer per ANSI/TPI 1 Sec.2.
For more information see these web sites: Alpine: alpineitw.com; TPI: tpinst.org; SBCA: sbcacomponents.com; ICC: iccsafe.org; AWC: awc.org



| | | | |
|---------------------------|--------------------------|--|---|
| SEQN: 700112 FROM: CDM | GABL Ply: 1 Qty: 1 | Job Number: 23-9209 Hendrickx Addtn Truss Label: A03 | Cust: R215 JRRef: 1XON2150005 T3 DrwNo: 097.23.1205.26723 SSB / DF 04/07/2023 |
|---------------------------|--------------------------|--|---|



| Loading Criteria (psf) TCCL: 20.00 TCCL: 10.00 BCLL: 0.00 BCDL: 10.00 Des Ld: 40.00 NCBCLL: 10.00 Soffit: 2.00 Load Duration: 1.25 Spacing: 24.0 " | Wind Criteria Wind Std: ASCE 7-16 Speed: 130 mph Enclosure: Closed Risk Category: II EXP: C Kzt: NA Mean Height: 15.00 ft TCCL: 5.0 psf BCDL: 5.0 psf MWFRS Parallel Dist: 0 to h/2 C&C Dist a: 3.00 ft Loc. from endwall: Any GCpi: 0.18 Wind Duration: 1.60 | Snow Criteria (Pg,Pf in PSF) Pg: NA Ct: NA CAT: NA Pf: NA Ce: NA Lu: NA Cs: NA Snow Duration: NA Building Code: FBC 7th Ed. 2020 Res. TPI Std: 2014 Rep Fac: Yes FT/RT:20(0)/10(0) Plate Type(s): WAVE | Defl/CSI Criteria PP Deflection in loc L/def L/# VERT(LL): 0.002 F 999 240 VERT(CL): 0.004 F 999 180 HORZ(LL): 0.002 G - - HORZ(TL): 0.003 I - - Creep Factor: 2.0 Max TC CSI: 0.484 Max BC CSI: 0.094 Max Web CSI: 0.060 VIEW Ver: 22.02.00.0914.12 | ▲ Maximum Reactions (lbs), or *=PLF <table border="1"> <thead> <tr> <th rowspan="2">Loc</th> <th colspan="3">Gravity</th> <th colspan="3">Non-Gravity</th> </tr> <tr> <th>R+</th> <th>/R-</th> <th>/Rh</th> <th>/Rw</th> <th>/U</th> <th>/RL</th> </tr> </thead> <tbody> <tr> <td>B</td> <td>420</td> <td>-</td> <td>-</td> <td>/285</td> <td>/68</td> <td>/176</td> </tr> <tr> <td>B*</td> <td>42</td> <td>-</td> <td>-</td> <td>/27</td> <td>/6</td> <td>-</td> </tr> <tr> <td>J</td> <td>420</td> <td>-</td> <td>-</td> <td>/278</td> <td>/68</td> <td>-</td> </tr> </tbody> </table> Wind reactions based on MWFRS B Brg Wid = 4.0 Min Req = 1.5 (Truss) B Brg Wid = 136 Min Req = - J Brg Wid = 4.0 Min Req = 1.5 (Truss) Bearings B, B, & J are a rigid surface. Members not listed have forces less than 375# | Loc | Gravity | | | Non-Gravity | | | R+ | /R- | /Rh | /Rw | /U | /RL | B | 420 | - | - | /285 | /68 | /176 | B* | 42 | - | - | /27 | /6 | - | J | 420 | - | - | /278 | /68 | - |
|--|---|--|---|---|-----|---------|--|--|-------------|--|--|----|-----|-----|-----|----|-----|---|-----|---|---|------|-----|------|----|----|---|---|-----|----|---|---|-----|---|---|------|-----|---|
| Loc | Gravity | | | Non-Gravity | | | | | | | | | | | | | | | | | | | | | | | | | | | | | | | | | | |
| | R+ | /R- | /Rh | /Rw | /U | /RL | | | | | | | | | | | | | | | | | | | | | | | | | | | | | | | | |
| B | 420 | - | - | /285 | /68 | /176 | | | | | | | | | | | | | | | | | | | | | | | | | | | | | | | | |
| B* | 42 | - | - | /27 | /6 | - | | | | | | | | | | | | | | | | | | | | | | | | | | | | | | | | |
| J | 420 | - | - | /278 | /68 | - | | | | | | | | | | | | | | | | | | | | | | | | | | | | | | | | |

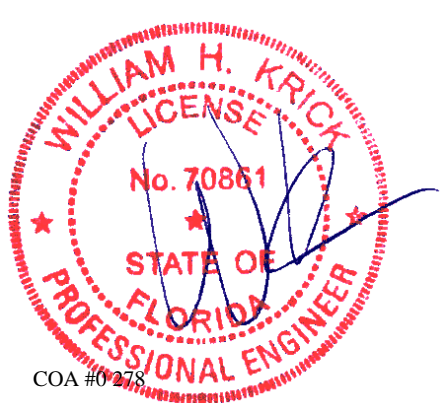
Lumber
 Top chord: 2x4 SP #2;
 Bot chord: 2x4 SP #2;
 Webs: 2x4 SP #3;
 Stack Chord: SC1 2x4 SP #2;
 Stack Chord: SC2 2x4 SP #2;

Plating Notes
 All plates are 2X4 except as noted.
 (**) 2 plate(s) require special positioning. Refer to scaled plate plot details for special positioning requirements.

Loading
 Gable end supports 8" max rake overhang. Top chord must not be cut or notched.

Wind
 Wind loads based on MWFRS with additional C&C member design.
 Wind loading based on both gable and hip roof types.
 + Member to be laterally braced for out of plane wind loads

Additional Notes
 See DWGS A14015ENC160118 & GBLLETIN0118 for gable wind bracing and other requirements.
 Stacked top chord must NOT be notched or cut in area (NNL). Dropped top chord braced at 24" oc intervals. Attach stacked top chord (SC) to dropped top chord in notchable area using 3x4 tie-plates 24" oc. Center plate on stacked/dropped chord interface, plate length perpendicular to chord length. Splice top chord in notchable area using 3x6.
 The overall height of this truss excluding overhang is 4-0-4.



COA #0278
 04/07/2023
 Florida Certificate of Product Approval #FL 1999

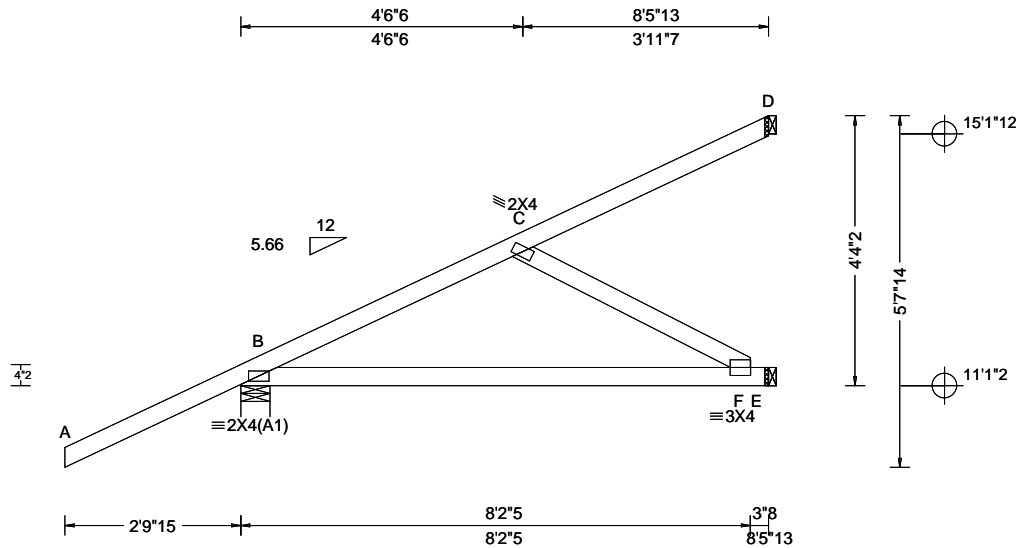
****WARNING** READ AND FOLLOW ALL NOTES ON THIS DRAWING!**
****IMPORTANT** FURNISH THIS DRAWING TO ALL CONTRACTORS INCLUDING THE INSTALLERS**
 Trusses require extreme care in fabricating, handling, shipping, installing and bracing. Refer to and follow the latest edition of BCSI (Building Component Safety Information, by TPI and SBCA) for safety practices prior to performing these functions. Installers shall provide temporary bracing per BCSI. Unless noted otherwise, top chord shall have properly attached structural sheathing and bottom chord shall have a properly attached rigid ceiling. Locations shown for permanent lateral restraint of webs shall have bracing installed per BCSI sections B3, B7, or B10, as applicable. Apply plates to each face of truss and position as shown above and on the Joint Details, unless noted otherwise. Refer to drawings 160A-Z for standard plate positions. Refer to job's General Notes page for additional information.

Alpine, a division of ITW Building Components Group Inc. shall not be responsible for any deviation from this drawing, any failure to build the truss in conformance with ANSI/TPI 1, or for handling, shipping, installation and bracing of trusses. A seal on this drawing or cover page listing this drawing, indicates acceptance of professional engineering responsibility solely for the design shown. The suitability and use of this drawing for any structure is the responsibility of the Building Designer per ANSI/TPI 1 Sec.2.

For more information see these web sites: Alpine: alpineitw.com; TPI: tpinst.org; SBCA: sbccomponents.com; ICC: iccsafe.org; AWC: awc.org



| | | | | |
|---------------------------|------|------------------|---|--|
| SEQN: 700122 FROM: CDM | HIP_ | Ply: 1 Qty: 2 | Job Number: 23-9209 Hendrickx Addtn Truss Label: HJ01 | Cust: R215 JRef: 1XON2150005 T9 DrwNo: 097.23.1205.28830 SSB / DF 04/07/2023 |
|---------------------------|------|------------------|---|--|



| | | | | |
|---|---|---|---|--|
| Loading Criteria (psf) TCLL: 20.00 TCDL: 10.00 BCLL: 0.00 BCDL: 10.00 Des Ld: 40.00 NCBCLL: 0.00 Soffit: 2.00 Load Duration: 1.25 Spacing: 24.0 " | Wind Criteria Wind Std: ASCE 7-16 Speed: 130 mph Enclosure: Closed Risk Category: II EXP: C Kzt: NA Mean Height: 15.00 ft TCDL: 5.0 psf BCDL: 5.0 psf MWFRS Parallel Dist: 0 to h/2 C&C Dist a: 3.00 ft Loc. from endwall: NA GCp: 0.18 Wind Duration: 1.60 | Snow Criteria (Pg,Pf in PSF) Pg: NA Ct: NA CAT: NA Pf: NA Ce: NA Lu: NA Cs: NA Snow Duration: NA Building Code: FBC 7th Ed. 2020 Res. TPI Std: 2014 Rep Fac: No FT/RT:20(0)/10(0) Plate Type(s): WAVE | Defl/CSI Criteria PP Deflection in loc L/def L/# VERT(LL): 0.014 F 999 240 VERT(CL): 0.028 F 999 180 HORZ(LL): 0.005 B - - HORZ(TL): 0.008 C - - Creep Factor: 2.0 Max TC CSI: 0.611 Max BC CSI: 0.519 Max Web CSI: 0.133 VIEW Ver: 22.02.00.0914.12 | ▲ Maximum Reactions (lbs) Gravity Loc R+ / R- / Rh / Rw / U / RL Non-Gravity B 427 /- /- /- /88 /- E 251 /- /- /6 /- /- D 194 /- /- /- /74 /- Wind reactions based on MWFRS B Brg Wid = 5.7 Min Req = 1.5 (Truss) E Brg Wid = 1.5 Min Req = - D Brg Wid = 1.5 Min Req = - Bearing B is a rigid surface. Members not listed have forces less than 375# |
|---|---|---|---|--|

Lumber

Top chord: 2x4 SP #2;
Bot chord: 2x4 SP #2;
Webs: 2x4 SP #3;

Loading

Hipjack supports 6-0-0 setback jacks with no webs.

Wind

Wind loads and reactions based on MWFRS.
Wind loading based on both gable and hip roof types.

Additional Notes

The overall height of this truss excluding overhang is 4-4-2.

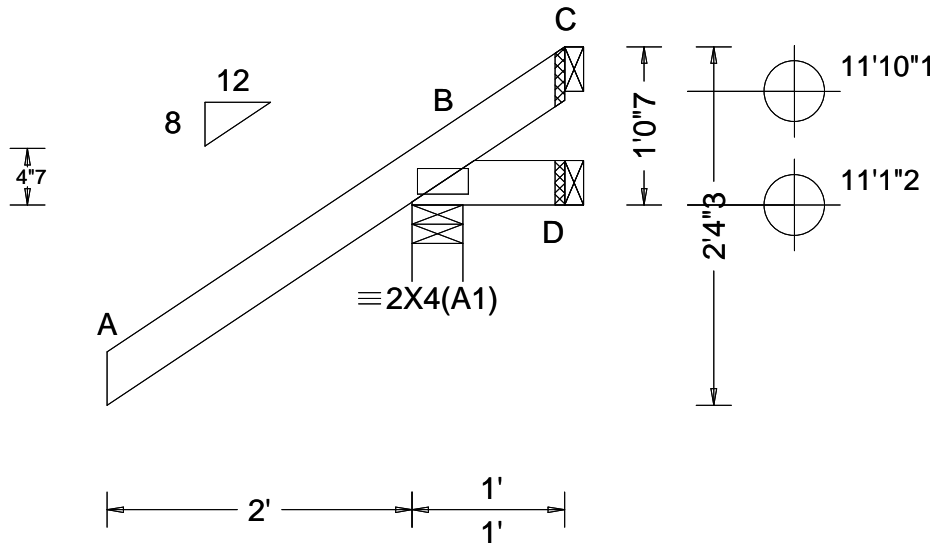


COA #0278

04/07/2023 Florida Certificate of Product Approval #FL 1999

****WARNING** READ AND FOLLOW ALL NOTES ON THIS DRAWING!**
****IMPORTANT** FURNISH THIS DRAWING TO ALL CONTRACTORS INCLUDING THE INSTALLERS**
Trusses require extreme care in fabricating, handling, shipping, installing and bracing. Refer to and follow the latest edition of BCSI (Building Component Safety Information, by TPI and SBCA) for safety practices prior to performing these functions. Installers shall provide temporary bracing per BCSI. Unless noted otherwise, top chord shall have properly attached structural sheathing and bottom chord shall have a properly attached rigid ceiling. Locations shown for permanent lateral restraint of webs shall have bracing installed per BCSI sections B3, B7, or B10, as applicable. Apply plates to each face of truss and position as shown above and on the Joint Details, unless noted otherwise. Refer to drawings 160A-Z for standard plate positions. Refer to job's General Notes page for additional information.
Alpine, a division of ITW Building Components Group Inc. shall not be responsible for any deviation from this drawing, any failure to build the truss in conformance with ANSI/TPI 1, or for handling, shipping, installation and bracing of trusses. A seal on this drawing or cover page listing this drawing, indicates acceptance of professional engineering responsibility solely for the design shown. The suitability and use of this drawing for any structure is the responsibility of the Building Designer per ANSI/TPI 1 Sec.2.
For more information see these web sites: Alpine: alpineitw.com; TPI: tpinst.org; SBCA: sbccomponents.com; ICC: iccsafe.org; AWC: awc.org





| Loading Criteria (psf) TCCL: 20.00 TCCL: 10.00 BCLL: 0.00 BCDL: 10.00 Des Ld: 40.00 NCBCLL: 10.00 Soffit: 2.00 Load Duration: 1.25 Spacing: 24.0 " | Wind Criteria Wind Std: ASCE 7-16 Speed: 130 mph Enclosure: Closed Risk Category: II EXP: C Kzt: NA Mean Height: 15.00 ft TCCL: 5.0 psf BCDL: 5.0 psf MWFRS Parallel Dist: 0 to h/2 C&C Dist a: 3.00 ft Loc. from endwall: Any GCcpi: 0.18 Wind Duration: 1.60 | Snow Criteria (Pg,Pf in PSF) Pg: NA Ct: NA CAT: NA Pf: NA Ce: NA Lu: NA Cs: NA Snow Duration: NA Building Code: FBC 7th Ed. 2020 Res. TPI Std: 2014 Rep Fac: Yes FT/RT:20(0)/10(0) Plate Type(s): WAVE | Defl/CSI Criteria PP Deflection in loc L/def L/# VERT(LL): NA VERT(CL): NA HORZ(LL): -0.001 B - - HORZ(TL): 0.001 B - - Creep Factor: 2.0 Max TC CSI: 0.501 Max BC CSI: 0.080 Max Web CSI: 0.000 VIEW Ver: 22.02.00.0914.12 | ▲ Maximum Reactions (lbs) <table border="1"> <thead> <tr> <th rowspan="2">Loc</th> <th colspan="3">Gravity</th> <th colspan="3">Non-Gravity</th> </tr> <tr> <th>R+</th> <th>/R-</th> <th>/Rh</th> <th>/Rw</th> <th>/U</th> <th>/RL</th> </tr> </thead> <tbody> <tr> <td>B</td> <td>372</td> <td>-</td> <td>-</td> <td>/328</td> <td>/107</td> <td>/60</td> </tr> <tr> <td>D</td> <td>-</td> <td>/-36</td> <td>-</td> <td>/23</td> <td>/36</td> <td>-</td> </tr> <tr> <td>C</td> <td>-</td> <td>/-114</td> <td>-</td> <td>/63</td> <td>/126</td> <td>-</td> </tr> </tbody> </table> | Loc | Gravity | | | Non-Gravity | | | R+ | /R- | /Rh | /Rw | /U | /RL | B | 372 | - | - | /328 | /107 | /60 | D | - | /-36 | - | /23 | /36 | - | C | - | /-114 | - | /63 | /126 | - |
|--|--|--|--|--|------|---------|--|--|-------------|--|--|----|-----|-----|-----|----|-----|---|-----|---|---|------|------|-----|---|---|------|---|-----|-----|---|---|---|-------|---|-----|------|---|
| | | | | Loc | | Gravity | | | Non-Gravity | | | | | | | | | | | | | | | | | | | | | | | | | | | | | |
| R+ | /R- | /Rh | /Rw | | /U | /RL | | | | | | | | | | | | | | | | | | | | | | | | | | | | | | | | |
| B | 372 | - | - | /328 | /107 | /60 | | | | | | | | | | | | | | | | | | | | | | | | | | | | | | | | |
| D | - | /-36 | - | /23 | /36 | - | | | | | | | | | | | | | | | | | | | | | | | | | | | | | | | | |
| C | - | /-114 | - | /63 | /126 | - | | | | | | | | | | | | | | | | | | | | | | | | | | | | | | | | |
| Wind reactions based on MWFRS B Brg Wid = 4.0 Min Req = 1.5 (Truss) D Brg Wid = 1.5 Min Req = - C Brg Wid = 1.5 Min Req = - Bearing B is a rigid surface. Members not listed have forces less than 375# | | | | | | | | | | | | | | | | | | | | | | | | | | | | | | | | | | | | | | |

Lumber

Top chord: 2x4 SP #2;
 Bot chord: 2x4 SP #2;

Wind

Wind loads based on MWFRS with additional C&C member design.
 Wind loading based on both gable and hip roof types.

Additional Notes

The overall height of this truss excluding overhang is 1'-0-7.

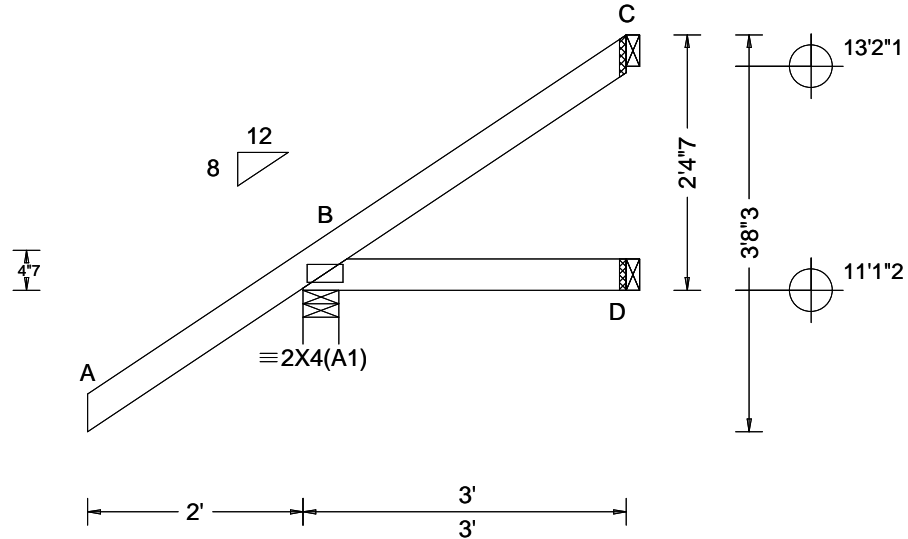


COA #0278

Florida Certificate of Product Approval #FL 1999

****WARNING** READ AND FOLLOW ALL NOTES ON THIS DRAWING!**
****IMPORTANT** FURNISH THIS DRAWING TO ALL CONTRACTORS INCLUDING THE INSTALLERS**
 Trusses require extreme care in fabricating, handling, shipping, installing and bracing. Refer to and follow the latest edition of BCSI (Building Component Safety Information, by TPI and SBCA) for safety practices prior to performing these functions. Installers shall provide temporary bracing per BCSI. Unless noted otherwise, top chord shall have properly attached structural sheathing and bottom chord shall have a properly attached rigid ceiling. Locations shown for permanent lateral restraint of webs shall have bracing installed per BCSI sections B3, B7, or B10, as applicable. Apply plates to each face of truss and position as shown above and on the Joint Details, unless noted otherwise. Refer to drawings 160A-Z for standard plate positions. Refer to job's General Notes page for additional information.
 Alpine, a division of ITW Building Components Group Inc. shall not be responsible for any deviation from this drawing, any failure to build the truss in conformance with ANSI/TPI 1, or for handling, shipping, installation and bracing of trusses. A seal on this drawing or cover page listing this drawing, indicates acceptance of professional engineering responsibility solely for the design shown. The suitability and use of this drawing for any structure is the responsibility of the Building Designer per ANSI/TPI 1 Sec.2.
 For more information see these web sites: Alpine: alpineitw.com; TPI: tpinst.org; SBCA: sbccomponents.com; ICC: iccsafe.org; AWC: awc.org





| Loading Criteria (psf) TCCL: 20.00 TCCL: 10.00 BCLL: 0.00 BCDL: 10.00 Des Ld: 40.00 NCBCLL: 10.00 Soffit: 2.00 Load Duration: 1.25 Spacing: 24.0 " | Wind Criteria Wind Std: ASCE 7-16 Speed: 130 mph Enclosure: Closed Risk Category: II EXP: C Kzt: NA Mean Height: 15.00 ft TCCL: 5.0 psf BCDL: 5.0 psf MWFRS Parallel Dist: 0 to h/2 C&C Dist a: 3.00 ft Loc. from endwall: not in 4.50 ft GCp: 0.18 Wind Duration: 1.60 | Snow Criteria (Pg,Pf in PSF) Pg: NA Ct: NA CAT: NA Pf: NA Ce: NA Lu: NA Cs: NA Snow Duration: NA Building Code: FBC 7th Ed. 2020 Res. TPI Std: 2014 Rep Fac: Yes FT/RT:20(0)/10(0) Plate Type(s): WAVE | Defl/CSI Criteria PP Deflection in loc L/def L/# VERT(LL): NA VERT(CL): NA HORZ(LL): -0.001 B - - HORZ(TL): 0.002 B - - Creep Factor: 2.0 Max TC CSI: 0.387 Max BC CSI: 0.082 Max Web CSI: 0.000 VIEW Ver: 22.02.00.0914.12 | ▲ Maximum Reactions (lbs) <table border="1"> <thead> <tr> <th rowspan="2">Loc</th> <th colspan="3">Gravity</th> <th colspan="3">Non-Gravity</th> </tr> <tr> <th>R+</th> <th>/R-</th> <th>/Rh</th> <th>/Rw</th> <th>/U</th> <th>/RL</th> </tr> </thead> <tbody> <tr> <td>B</td> <td>325</td> <td>-</td> <td>-</td> <td>/253</td> <td>/46</td> <td>/107</td> </tr> <tr> <td>D</td> <td>46</td> <td>-</td> <td>-</td> <td>/35</td> <td>/2</td> <td>-</td> </tr> <tr> <td>C</td> <td>50</td> <td>-</td> <td>-</td> <td>/41</td> <td>/37</td> <td>-</td> </tr> </tbody> </table> | Loc | Gravity | | | Non-Gravity | | | R+ | /R- | /Rh | /Rw | /U | /RL | B | 325 | - | - | /253 | /46 | /107 | D | 46 | - | - | /35 | /2 | - | C | 50 | - | - | /41 | /37 | - |
|--|---|--|--|---|-----|---------|--|--|-------------|--|--|----|-----|-----|-----|----|-----|---|-----|---|---|------|-----|------|---|----|---|---|-----|----|---|---|----|---|---|-----|-----|---|
| | | | | Loc | | Gravity | | | Non-Gravity | | | | | | | | | | | | | | | | | | | | | | | | | | | | | |
| R+ | /R- | /Rh | /Rw | | /U | /RL | | | | | | | | | | | | | | | | | | | | | | | | | | | | | | | | |
| B | 325 | - | - | /253 | /46 | /107 | | | | | | | | | | | | | | | | | | | | | | | | | | | | | | | | |
| D | 46 | - | - | /35 | /2 | - | | | | | | | | | | | | | | | | | | | | | | | | | | | | | | | | |
| C | 50 | - | - | /41 | /37 | - | | | | | | | | | | | | | | | | | | | | | | | | | | | | | | | | |
| Wind reactions based on MWFRS B Brg Wid = 4.0 Min Req = 1.5 (Truss) D Brg Wid = 1.5 Min Req = - C Brg Wid = 1.5 Min Req = - Bearing B is a rigid surface. Members not listed have forces less than 375# | | | | | | | | | | | | | | | | | | | | | | | | | | | | | | | | | | | | | | |

Lumber

Top chord: 2x4 SP #2;
 Bot chord: 2x4 SP #2;

Wind

Wind loads based on MWFRS with additional C&C member design.
 Wind loading based on both gable and hip roof types.

Additional Notes

The overall height of this truss excluding overhang is 2-4-7.

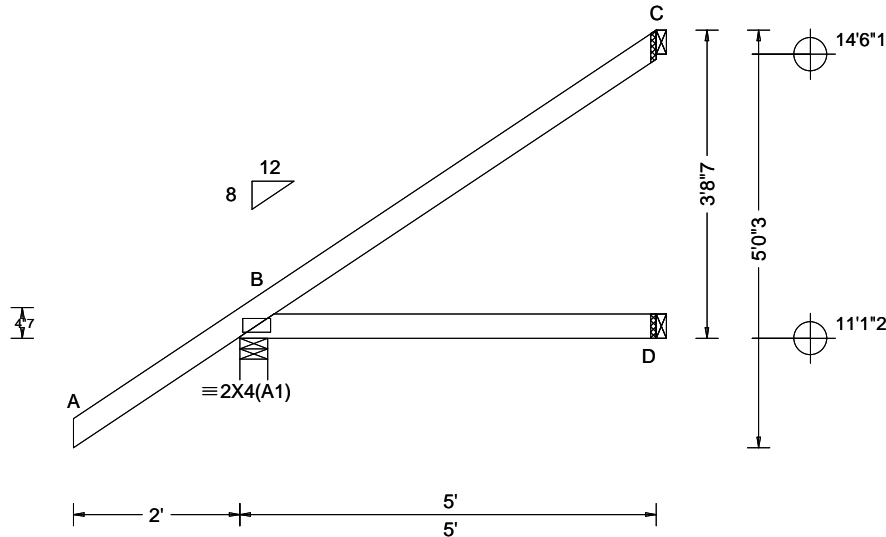


COA #0278

Florida Certificate of Product Approval #FL 1999

****WARNING** READ AND FOLLOW ALL NOTES ON THIS DRAWING!**
****IMPORTANT** FURNISH THIS DRAWING TO ALL CONTRACTORS INCLUDING THE INSTALLERS**
 Trusses require extreme care in fabricating, handling, shipping, installing and bracing. Refer to and follow the latest edition of BCSI (Building Component Safety Information, by TPI and SBCA) for safety practices prior to performing these functions. Installers shall provide temporary bracing per BCSI. Unless noted otherwise, top chord shall have properly attached structural sheathing and bottom chord shall have a properly attached rigid ceiling. Locations shown for permanent lateral restraint of webs shall have bracing installed per BCSI sections B3, B7, or B10, as applicable. Apply plates to each face of truss and position as shown above and on the Joint Details, unless noted otherwise. Refer to drawings 160A-Z for standard plate positions. Refer to job's General Notes page for additional information.
 Alpine, a division of ITW Building Components Group Inc. shall not be responsible for any deviation from this drawing, any failure to build the truss in conformance with ANSI/TPI 1, or for handling, shipping, installation and bracing of trusses. A seal on this drawing or cover page listing this drawing, indicates acceptance of professional engineering responsibility solely for the design shown. The suitability and use of this drawing for any structure is the responsibility of the Building Designer per ANSI/TPI 1 Sec.2.
 For more information see these web sites: Alpine: alpineitw.com; TPI: tpinst.org; SBCA: sbccomponents.com; ICC: iccsafe.org; AWC: awc.org





| | | | | |
|---|---|---|---|--|
| Loading Criteria (psf) | Wind Criteria | Snow Criteria (Pg,Pf in PSF) | Defl/CSI Criteria | ▲ Maximum Reactions (lbs) |
| TCLL: 20.00 TCDL: 10.00 BCLL: 0.00 BCDL: 10.00 Des Ld: 40.00 NCBCLL: 10.00 Soffit: 2.00 Load Duration: 1.25 Spacing: 24.0 " | Wind Std: ASCE 7-16 Speed: 130 mph Enclosure: Closed Risk Category: II EXP: C Kzt: NA Mean Height: 15.00 ft TCDL: 5.0 psf BCDL: 5.0 psf MWFRS Parallel Dist: 0 to h/2 C&C Dist a: 3.00 ft Loc. from endwall: not in 4.50 ft GCp: 0.18 Wind Duration: 1.60 | Pg: NA Ct: NA CAT: NA Pf: NA Ce: NA Lu: NA Cs: NA Snow Duration: NA Building Code: FBC 7th Ed. 2020 Res. TPI Std: 2014 Rep Fac: Yes FT/RT:20(0)/10(0) Plate Type(s): WAVE | PP Deflection in loc L/def L/# VERT(LL): NA VERT(CL): NA HORZ(LL): 0.002 B - - HORZ(TL): 0.006 B - - Creep Factor: 2.0 Max TC CSI: 0.426 Max BC CSI: 0.229 Max Web CSI: 0.000 VIEW Ver: 22.02.00.0914.12 | Gravity Non-Gravity Loc R+ / R- / Rh / Rw / U / RL B 387 /- /- /283 /36 /154 D 88 /- /- /54 /- /- C 124 /- /- /87 /76 /- Wind reactions based on MWFRS B Brg Wid = 4.0 Min Req = 1.5 (Truss) D Brg Wid = 1.5 Min Req = - C Brg Wid = 1.5 Min Req = - Bearing B is a rigid surface. Members not listed have forces less than 375# |

Lumber

Top chord: 2x4 SP #2;
Bot chord: 2x4 SP #2;

Wind

Wind loads based on MWFRS with additional C&C member design.
Wind loading based on both gable and hip roof types.

Additional Notes

The overall height of this truss excluding overhang is 3-8-7.



COA #0 278

04/07/2023
Florida Certificate of Product Approval #FL 1999

****WARNING** READ AND FOLLOW ALL NOTES ON THIS DRAWING!**
****IMPORTANT** FURNISH THIS DRAWING TO ALL CONTRACTORS INCLUDING THE INSTALLERS**
Trusses require extreme care in fabricating, handling, shipping, installing and bracing. Refer to and follow the latest edition of BCSI (Building Component Safety Information, by TPI and SBCA) for safety practices prior to performing these functions. Installers shall provide temporary bracing per BCSI. Unless noted otherwise, top chord shall have properly attached structural sheathing and bottom chord shall have a properly attached rigid ceiling. Locations shown for permanent lateral restraint of webs shall have bracing installed per BCSI sections B3, B7, or B10, as applicable. Apply plates to each face of truss and position as shown above and on the Joint Details, unless noted otherwise. Refer to drawings 160A-Z for standard plate positions. Refer to job's General Notes page for additional information.
Alpine, a division of ITW Building Components Group Inc. shall not be responsible for any deviation from this drawing, any failure to build the truss in conformance with ANSI/TPI 1, or for handling, shipping, installation and bracing of trusses. A seal on this drawing or cover page listing this drawing, indicates acceptance of professional engineering responsibility solely for the design shown. The suitability and use of this drawing for any structure is the responsibility of the Building Designer per ANSI/TPI 1 Sec.2.
For more information see these web sites: Alpine: alpineitw.com; TPI: tpinst.org; SBCA: sbccomponents.com; ICC: iccsafe.org; AWC: awc.org



Gable Stud Reinforcement Detail

ASCE 7-16: 140 mph Wind Speed, 15' Mean Height, Enclosed, Exposure C, Kzt = 1.00

- Or: 120 mph Wind Speed, 15' Mean Height, Partially Enclosed, Exposure C, Kzt = 1.00
- Or: 120 mph Wind Speed, 15' Mean Height, Enclosed, Exposure D, Kzt = 1.00
- Or: 100 mph Wind Speed, 15' Mean Height, Partially Enclosed, Exposure D, Kzt = 1.00

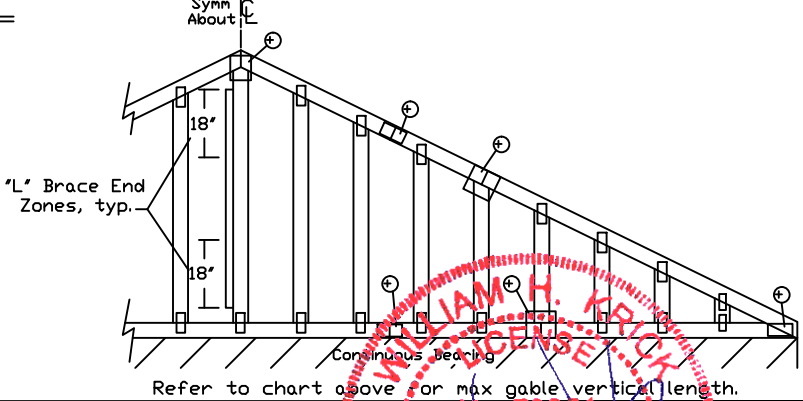
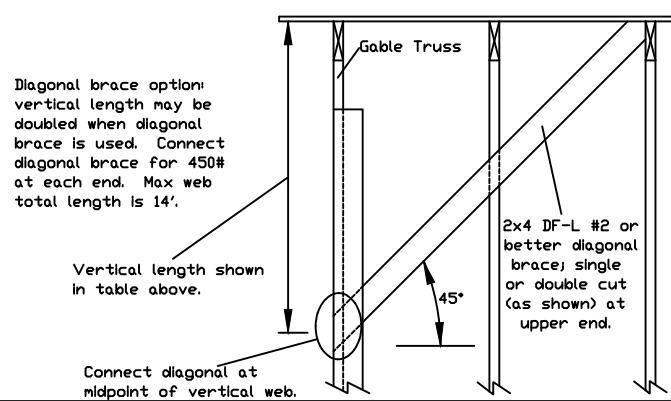
| Max Gable Vertical Length | 2x4 Gable Vertical Spacing | | Brace Grade | No Braces | (1) 1x4 'L' Brace * | | (1) 2x4 'L' Brace * | | (2) 2x4 'L' Brace ** | | (1) 2x6 'L' Brace * | | (2) 2x6 'L' Brace ** | | |
|---------------------------|----------------------------|----------|-------------|-----------|---------------------|---------|---------------------|---------|----------------------|---------|---------------------|---------|----------------------|---------|--------|
| | Species | Grade | | | Group A | Group B | Group A | Group B | Group A | Group B | Group A | Group B | Group A | Group B | |
| | 24" o.c. | SPF | #1 / #2 | HF | #1 / #2 | 4' 3" | 7' 3" | 7' 7" | 8' 7" | 8' 11" | 10' 3" | 10' 8" | 13' 6" | 14' 0" | 14' 0" |
| #3 | | | | | 4' 1" | 6' 7" | 7' 1" | 8' 6" | 8' 10" | 10' 1" | 10' 6" | 13' 4" | 13' 10" | 14' 0" | 14' 0" |
| Stud | | | | | 4' 1" | 6' 7" | 7' 0" | 8' 6" | 8' 10" | 10' 1" | 10' 6" | 13' 4" | 13' 10" | 14' 0" | 14' 0" |
| Standard | | | #1 | 4' 1" | 5' 8" | 6' 0" | 7' 7" | 8' 1" | 10' 1" | 10' 6" | 11' 10" | 12' 8" | 14' 0" | 14' 0" | |
| | | | #2 | 4' 6" | 7' 4" | 7' 8" | 8' 8" | 9' 0" | 10' 4" | 10' 9" | 13' 8" | 14' 0" | 14' 0" | 14' 0" | |
| | | | #3 | 4' 3" | 7' 3" | 7' 7" | 8' 7" | 8' 11" | 10' 3" | 10' 8" | 13' 6" | 14' 0" | 14' 0" | 14' 0" | |
| SP | | DFL | #1 | 4' 2" | 6' 0" | 6' 4" | 7' 11" | 8' 6" | 10' 2" | 10' 7" | 12' 5" | 13' 4" | 14' 0" | 14' 0" | |
| | | | Stud | 4' 2" | 6' 0" | 6' 4" | 7' 11" | 8' 6" | 10' 2" | 10' 7" | 12' 5" | 13' 4" | 14' 0" | 14' 0" | |
| | | | Standard | 4' 0" | 5' 3" | 5' 7" | 7' 0" | 7' 6" | 9' 6" | 10' 2" | 11' 0" | 11' 10" | 14' 0" | 14' 0" | |
| | | SPF | #1 / #2 | HF | #1 / #2 | 4' 11" | 8' 4" | 8' 8" | 9' 10" | 10' 3" | 11' 8" | 12' 2" | 14' 0" | 14' 0" | 14' 0" |
| | | | | | #3 | 4' 8" | 8' 1" | 8' 8" | 9' 8" | 10' 1" | 11' 7" | 12' 1" | 14' 0" | 14' 0" | 14' 0" |
| | | | | | Stud | 4' 8" | 8' 1" | 8' 6" | 9' 8" | 10' 1" | 11' 7" | 12' 1" | 14' 0" | 14' 0" | 14' 0" |
| SP | DFL | #1 | 4' 8" | 6' 11" | 7' 5" | 9' 3" | 9' 11" | 11' 7" | 12' 1" | 14' 0" | 14' 0" | 14' 0" | 14' 0" | | |
| | | Stud | 4' 8" | 6' 11" | 7' 5" | 9' 3" | 9' 11" | 11' 7" | 12' 1" | 14' 0" | 14' 0" | 14' 0" | 14' 0" | | |
| | | Standard | 4' 8" | 6' 11" | 7' 5" | 9' 3" | 9' 11" | 11' 7" | 12' 1" | 14' 0" | 14' 0" | 14' 0" | 14' 0" | | |
| | SPF | #1 / #2 | HF | #1 / #2 | 5' 1" | 8' 5" | 8' 9" | 9' 11" | 10' 4" | 11' 10" | 12' 4" | 14' 0" | 14' 0" | 14' 0" | |
| | | | | #3 | 4' 11" | 8' 4" | 8' 8" | 9' 10" | 10' 3" | 11' 8" | 12' 2" | 14' 0" | 14' 0" | 14' 0" | |
| | | | | Stud | 4' 9" | 7' 4" | 7' 9" | 9' 9" | 10' 2" | 11' 8" | 12' 1" | 14' 0" | 14' 0" | 14' 0" | |
| SP | DFL | #1 | 4' 9" | 7' 4" | 7' 9" | 9' 9" | 10' 2" | 11' 8" | 12' 1" | 14' 0" | 14' 0" | 14' 0" | 14' 0" | | |
| | | Stud | 4' 9" | 7' 4" | 7' 9" | 9' 9" | 10' 2" | 11' 8" | 12' 1" | 14' 0" | 14' 0" | 14' 0" | 14' 0" | | |
| | | Standard | 4' 8" | 6' 5" | 6' 10" | 8' 7" | 9' 2" | 11' 7" | 12' 1" | 13' 6" | 14' 0" | 14' 0" | 14' 0" | | |
| | SPF | #1 / #2 | HF | #1 / #2 | 5' 5" | 9' 2" | 9' 6" | 10' 10" | 11' 3" | 11' 8" | 13' 5" | 14' 0" | 14' 0" | 14' 0" | |
| | | | | #3 | 5' 1" | 9' 0" | 9' 4" | 10' 8" | 11' 1" | 12' 9" | 13' 3" | 14' 0" | 14' 0" | 14' 0" | |
| | | | | Stud | 5' 1" | 9' 0" | 9' 4" | 10' 8" | 11' 1" | 12' 9" | 13' 3" | 14' 0" | 14' 0" | 14' 0" | |
| SP | DFL | #1 | 5' 1" | 9' 0" | 9' 4" | 10' 8" | 11' 1" | 12' 9" | 13' 3" | 14' 0" | 14' 0" | 14' 0" | 14' 0" | | |
| | | Stud | 5' 1" | 9' 0" | 9' 4" | 10' 8" | 11' 1" | 12' 9" | 13' 3" | 14' 0" | 14' 0" | 14' 0" | 14' 0" | | |
| | | Standard | 5' 1" | 9' 0" | 9' 4" | 10' 8" | 11' 1" | 12' 9" | 13' 3" | 14' 0" | 14' 0" | 14' 0" | 14' 0" | | |
| | SPF | #1 | HF | #1 | 5' 8" | 9' 3" | 9' 8" | 10' 11" | 11' 4" | 13' 0" | 13' 6" | 14' 0" | 14' 0" | 14' 0" | |
| | | | | #2 | 5' 5" | 9' 2" | 9' 6" | 10' 10" | 11' 3" | 12' 11" | 13' 5" | 14' 0" | 14' 0" | 14' 0" | |
| | | | | #3 | 5' 3" | 8' 5" | 9' 0" | 10' 9" | 11' 2" | 12' 10" | 13' 4" | 14' 0" | 14' 0" | 14' 0" | |
| Standard | Stud | 5' 3" | 8' 5" | 9' 0" | 10' 9" | 11' 2" | 12' 10" | 13' 4" | 14' 0" | 14' 0" | 14' 0" | 14' 0" | | | |
| | Stud | 5' 3" | 8' 5" | 9' 0" | 10' 9" | 11' 2" | 12' 10" | 13' 4" | 14' 0" | 14' 0" | 14' 0" | 14' 0" | | | |
| | Standard | 5' 1" | 7' 5" | 7' 11" | 9' 11" | 10' 7" | 12' 9" | 13' 3" | 14' 0" | 14' 0" | 14' 0" | 14' 0" | | | |

Bracing Group Species and Grades:

| Group A: | | | |
|-------------------|----------|------------------|----------|
| Spruce-Pine-Fir | | Hem-Fir | |
| #1 / #2 | Standard | #2 | Stud |
| #3 | Stud | #3 | Standard |
| Douglas Fir-Larch | | Southern Pine*** | |
| #3 | | #3 | |
| Stud | | Stud | |
| Standard | | Standard | |
| Group B: | | | |
| Hem-Fir | | | |
| #1 & Btr | | | |
| #1 | | | |
| Douglas Fir-Larch | | Southern Pine*** | |
| #1 | | #1 | |
| #2 | | #2 | |

1x4 Braces shall be SRB (Stress-Rated Board).
 ***For 1x4 So. Pine use only Industrial 55 or Industrial 45 Stress-Rated Boards. Group B values may be used with these grades.

Gable Truss Detail Notes:
 Wind Load deflection criterion is L/240.
 Provide uplift connections for 55 plf over continuous bearing (5 psf TC Dead Load).
 Gable end supports load from 4' 0" outlookers with 2' 0" overhang, or 12' plywood overhang.



Attach 'L' braces with 10d (0.128"x3.0" min) nails.
 * For (1) 'L' brace: space nails at 2' o.c. in 18' end zones and 4' o.c. between zones.
 ** For (2) 'L' braces: space nails at 3' o.c. in 18' end zones and 6' o.c. between zones.

'L' bracing must be a minimum of 80% of web member length.

| Gable Vertical Plate Sizes | |
|----------------------------|------------|
| Vertical Length | No Splice |
| Less than 4' 0" | 1X4 or 2X3 |
| Greater than 4' 0" | 3X4 |

+ Refer to common truss design for peak, splice, and heel plates.

Refer to the Building Designer for conditions not addressed by this detail.

155 Harlem Ave
North Building, 4th Floor
Glenview, IL 60025

WARNING: READ AND FOLLOW ALL NOTES ON THIS DRAWING. FURNISH THIS DRAWING TO ALL CONTRACTORS INCLUDING THE INSTALLERS.

Trusses require extreme care in fabricating, handling, shipping, installing and bracing. Refer to and follow the latest edition of BCSI (Building Component Safety Information, by TPI and SBCA) for safety practices prior to performing these functions. Installers shall provide temporary bracing per BCSI. Unless noted otherwise, top chord shall have properly attached structural sheathing and bottom chord shall have a properly attached rigid ceiling. Locations shown for permanent lateral restraint of web shall have bracing installed per BCSI sections B3, B7 or B10, as applicable. Apply plates to each face of truss and position as shown above and on the Joint Details, unless noted otherwise. Refer to drawings 150A-Z for standard plate positions.

Alpine, a division of ITW Building Components Group Inc. shall not be responsible for any deviation from this drawing, any failure to build the truss in conformance with ANSI/TPI 1, or for handling, shipping, installation & bracing of trusses.

A seal on this drawing or cover page listing this drawing, indicates acceptance of professional engineering responsibility solely for the design shown. The suitability and use of this drawing for any structure is the responsibility of the Building Designer per ANSI/TPI 1 Sec.2.

For more information see this Job's general notes page and these web sites:
 ALPINE: www.alpineitw.com; TPI: www.tpinet.org; SBCA: www.sbcacomponents.com; ICC: www.iccsafe.org

WILLIAM H. KRUTZ
 No. 70861
 STATE OF FLORIDA
 PROFESSIONAL ENGINEER

MAX. TOT. LD. 60 PSF

04/07/2023

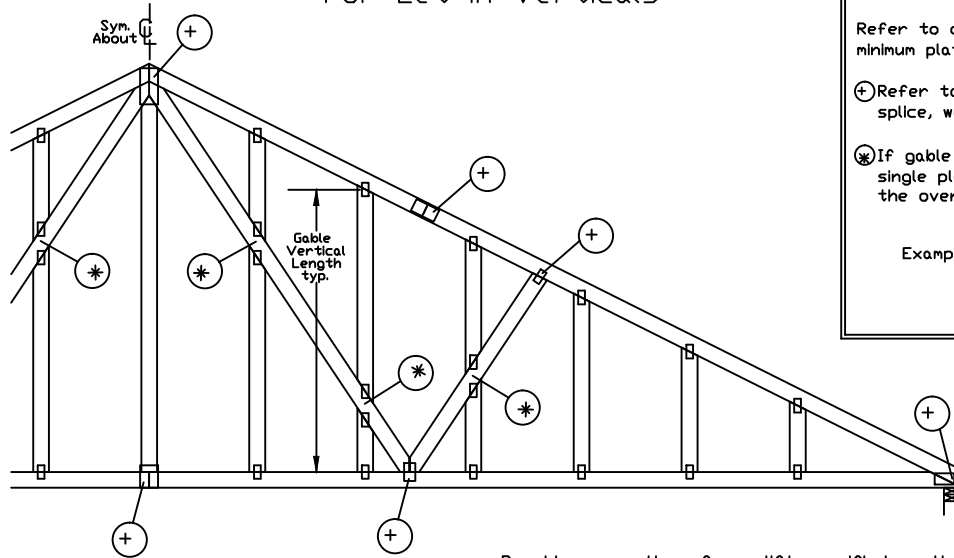
MAX. SPACING 24.0

COA #0 278

Florida Certificate of Product Approval #EL 999

| | |
|------|-------------------|
| REF | ASCE7-16-GAB14015 |
| DATE | 01/26/2018 |
| DRWG | A14015ENC160118 |

Gable Detail For Let-in Verticals

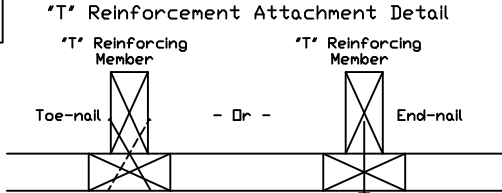


Gable Truss Plate Sizes

Refer to appropriate Alpine gable detail for minimum plate sizes for vertical studs.

- ⊕ Refer to Engineered truss design for peak, splice, web, and heel plates.
- ⊗ If gable vertical plates overlap, use a single plate that covers the total area of the overlapped plates to span the web.

Example:



Provide connections for uplift specified on the engineered truss design.

Attach each 'T' reinforcing member with
End Driven Nails:
10d Common (0.148"x3",min) Nails at 4' o.c. plus
(4) nails in the top and bottom chords.

Toenailed Nails:
10d Common (0.148"x3",min) Toenails at 4' o.c. plus
(4) toenails in the top and bottom chords.

This detail to be used with the appropriate Alpine gable detail for ASCE wind load.

- ASCE 7-05 Gable Detail Drawings
A13015051014, A12015051014, A11015051014, A10015051014, A14015051014,
A13030051014, A12030051014, A11030051014, A10030051014, A14030051014
- ASCE 7-10 & ASCE 7-16 Gable Detail Drawings
A11515ENC100118, A12015ENC100118, A14015ENC100118, A16015ENC100118,
A18015ENC100118, A20015ENC100118, A20015END100118, A20015PED100118,
A11530ENC100118, A12030ENC100118, A14030ENC100118, A16030ENC100118,
A18030ENC100118, A20030ENC100118, A20030END100118, A20030PED100118,
S11515ENC100118, S12015ENC100118, S14015ENC100118, S16015ENC100118,
S18015ENC100118, S20015ENC100118, S20015END100118, S20015PED100118,
S11530ENC100118, S12030ENC100118, S14030ENC100118, S16030ENC100118,
S18030ENC100118, S20030ENC100118, S20030END100118, S20030PED100118

See appropriate Alpine gable detail for maximum unbraced gable vertical length.

To convert from 'L' to 'T' reinforcing members, multiply 'T' increase by length (based on appropriate Alpine gable detail).

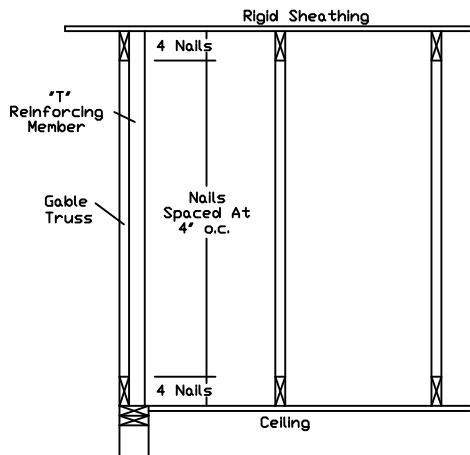
Maximum allowable 'T' reinforced gable vertical length is 14' from top to bottom chord.

'T' reinforcing member material must match size, specie, and grade of the 'L' reinforcing member.

Web Length Increase w/ 'T' Brace

| 'T' Reinf. Mbr. Size | 'T' Increase |
|----------------------|--------------|
| 2x4 | 30 % |
| 2x6 | 20 % |

Example:
ASCE 7-10 Wind Speed = 120 mph
Mean Roof Height = 30 ft, Kzt = 1.00
Gable Vertical = 24' o.c. SP #3
'T' Reinforcing Member Size = 2x4
'T' Brace Increase (From Above) = 30% = 1.30
(1) 2x4 'L' Brace Length = 8' 7"
Maximum 'T' Reinforced Gable Vertical Length
1.30 x 8' 7" = 11' 2"



WARNING: READ AND FOLLOW ALL NOTES ON THIS DRAWING
IMPORTANT: FURNISH THIS DRAWING TO ALL CONTRACTORS INCLUDING THE INSTALLERS.

Trusses require extreme care in fabricating, handling, shipping, installing and bracing. Refer to and follow the latest edition of BCSI (Building Component Safety Information, by TPI and SBCA) for safety practices prior to performing these functions. Installers shall provide temporary bracing per BCSI. Unless noted otherwise, top chord shall have properly attached structural sheathing and bottom chord shall have a properly attached rigid ceiling. Locations shown for permanent lateral restraint of trusses shall have bracing installed per BCSI sections B3, B7 or B10, as applicable. Apply plates to each face of truss and position as shown above and on the Joint Details, unless noted otherwise. Refer to drawings 160A-Z for standard plate positions.

Alpine, a division of ITW Building Components Group Inc. shall not be responsible for any deviation from this drawing, any failure to build the truss in conformance with ANSI/TPI 1, or for handling, shipping, installation & bracing of trusses.

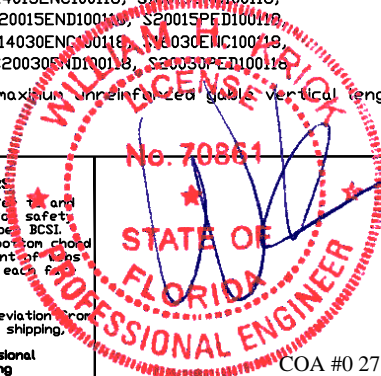
A seal on this drawing or cover page listing this drawing, indicates acceptance of professional engineering responsibility solely for the design shown. The suitability and use of this drawing for any structure is the responsibility of the Building Designer per ANSI/TPI 1 Sec.2.

For more information see this Job's general notes page and these web sites:

ALPINE: www.alpineitw.com; TPI: www.tpinstr.org; SBCA: www.sbcacomponents.com; ICC: www.iccsafe.org



155 Harlem Ave
North Building, 4th Floor
Glenview, IL 60025



COA #0 278
Florida Certificate of Product Approval #FL 1909

MAX. TOT. LD. 60 PSF
04/07/2023
DUR. FAC. ANY
MAX. SPACING 24.0"

REF LET-IN VERT
DATE 01/02/2018
DRWG GBLLETIN0118