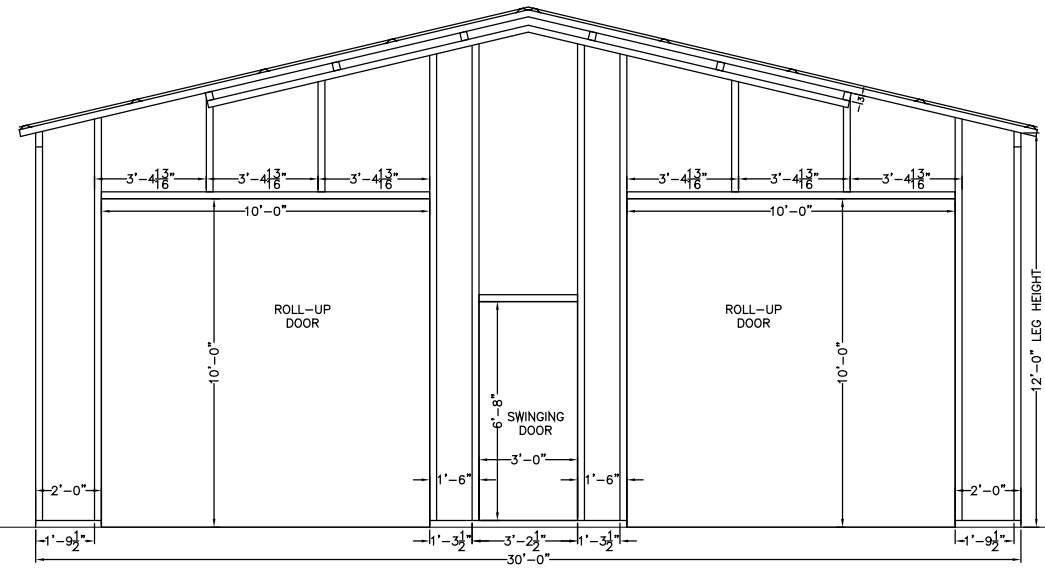
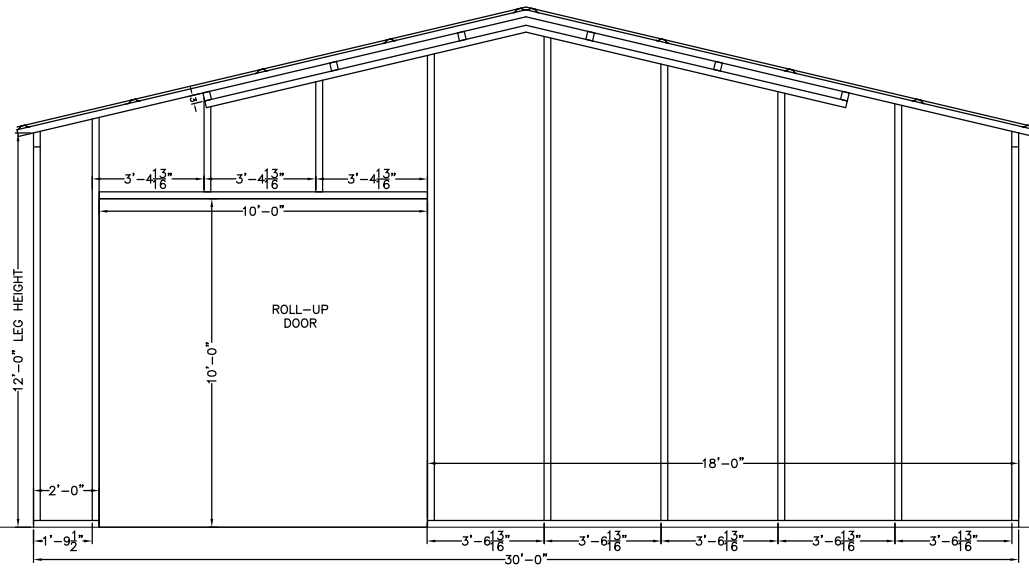


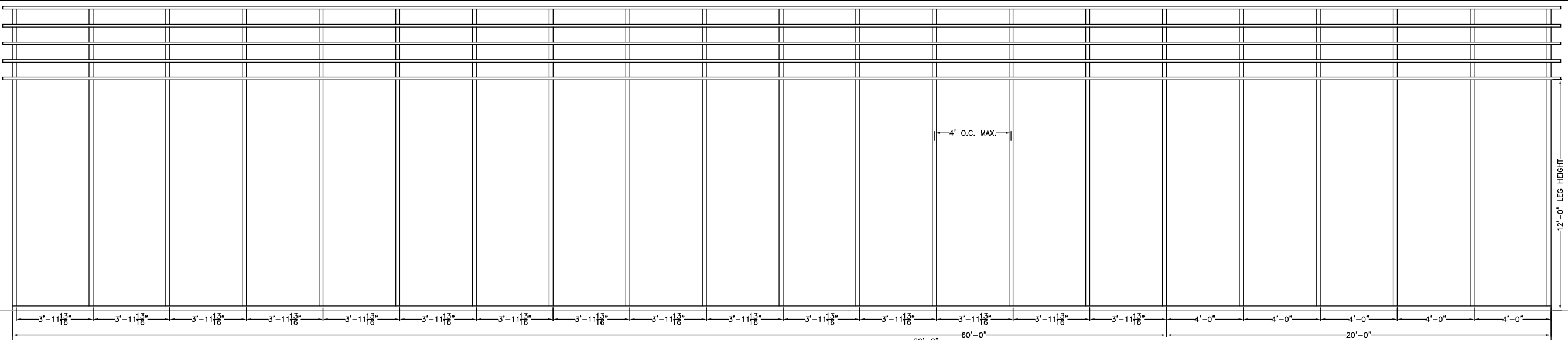
FRONT END WALL



MID END WALL



REAR END WALL



LEFT/RIGHT(MIRRORED) SIDE WALL

CODE INFORMATION	
CODE VERSION	FBC 2023 8th Edition, ASCE-7-22
MANUFACTURER	CARPORTS ANYWHERE
BUILDING TYPE	UTILITY STRUCTURE
CONSTRUCTION TYPE	II-B
RISK CATEGORY	I
FIRE PROTECTION	NONE
FIRE SUPPRESSION SYSTEM	NONE
OCCUPANCY	UTILITY, U
WIND SPEED	Vult-111mph
EXPOSURE	C
ENCLOSURE	ENCLOSED/OPEN
INTERNAL PRESSURE COEFF.	+/- 0.18/0.0
IMPORTANCE FACTOR	1.0
ROOF DEAD LOAD	3PSF
ROOF LIVE LOAD	20PSF OR 300lb P.L.
FLOOR DEAD LOAD	10PSF
FLOOR LIVE LOAD	50PSF
"R" RATING OF WALLS, FLOOR, ROOF	N/A
MODULES PER BUILDING	1
HURRICANE PROTECTION USAGE	NO
HURRICANE SHELTER USAGE	NO
SQUARE FOOTAGE	2,400 SQ. FT.

REVISIONS			
REV	DESCRIPTION	DATE	BY

DRAWN BY: MTB  
 DATE: 11/15/25  
 LOCATION: 47337-SW Bethlehem Ave, Fort White  
 SIZE: 80'L X 30'W X 12'H

TITLE: SIDE & END FRAMING VIEWS

Matthew T. Baldwin P.E.  
 Florida License #64608  
 1160 Private Road, DeLand

THIS ITEM HAS BEEN DIGITALLY SIGNED AND SEALED BY MATTHEW T. BALDWIN, P.E. ON THE DATE ADJACENT TO THE SEAL. PRINTED COPIES OF THIS DOCUMENT ARE NOT CONSIDERED SIGNED AND SEALED AND THE SIGNATURE MUST BE VERIFIED ON ANY ELECTRONIC COPIES.



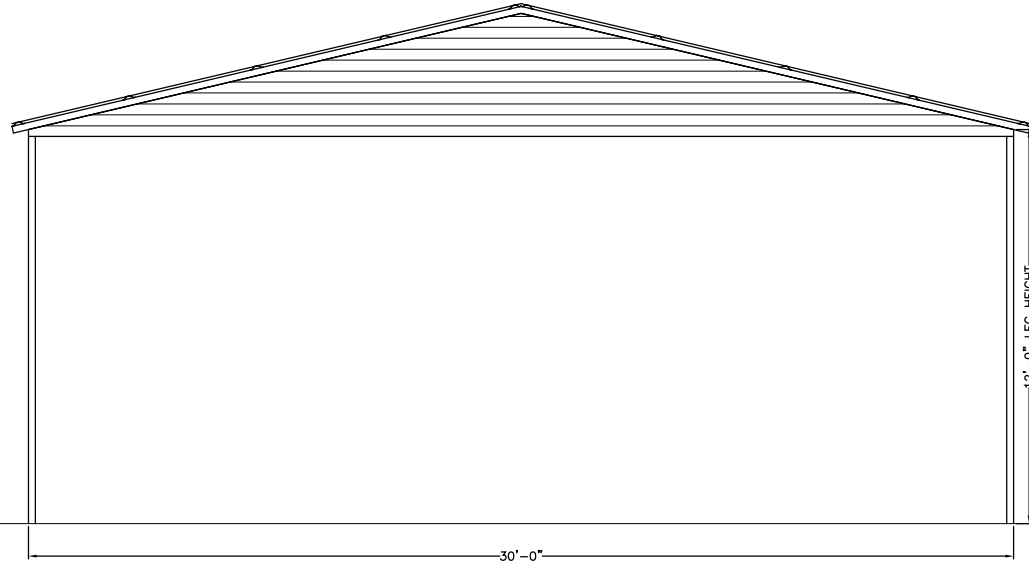
CODE INFORMATION

CODE VERSION	FBC 2023 8th Edition, ASCE-7-22
MANUFACTURER	CARPORTS ANYWHERE
BUILDING TYPE	UTILITY STRUCTURE
CONSTRUCTION TYPE	II-B
RISK CATEGORY	I
FIRE PROTECTION	NONE
FIRE SUPPRESSION SYSTEM	NONE
OCCUPANCY	UTILITY, U
WIND SPEED	Vult-111mph
EXPOSURE	C
ENCLOSURE	ENCLOSED/OPEN
INTERNAL PRESSURE COEFF.	+/- 0.18/0.0
IMPORTANCE FACTOR	1.0
ROOF DEAD LOAD	3PSF
ROOF LIVE LOAD	20PSF OR 300lb P.L.
FLOOR DEAD LOAD	10PSF
FLOOR LIVE LOAD	50PSF
"R" RATING OF WALLS, FLOOR, ROOF	N/A
MODULES PER BUILDING	1
HURRICANE PROTECTION USAGE	NO
HURRICANE SHELTER USAGE	NO
SQUARE FOOTAGE	2,400 SQ. FT.

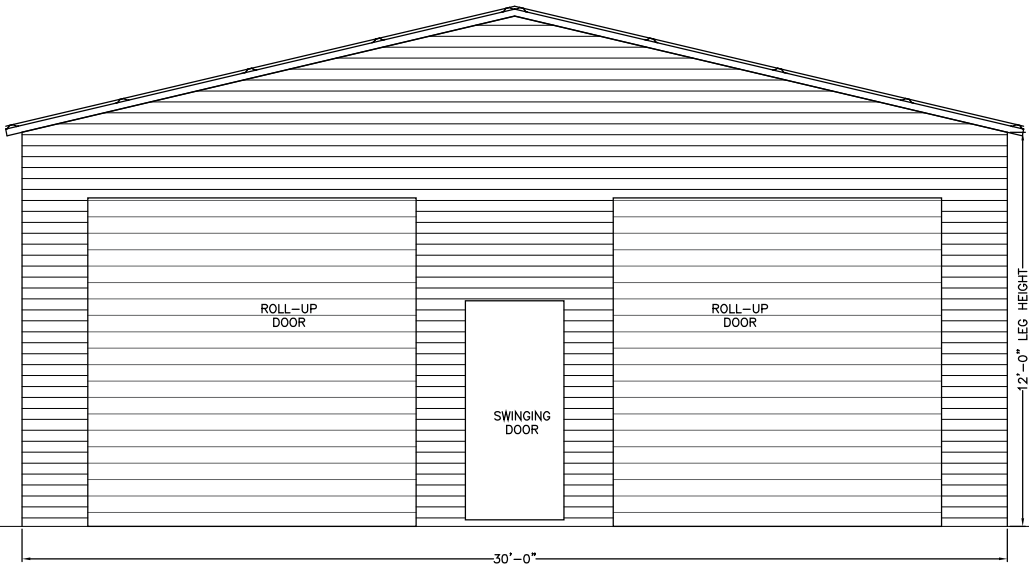
REVISIONS

REV	DESCRIPTION	DATE	BY

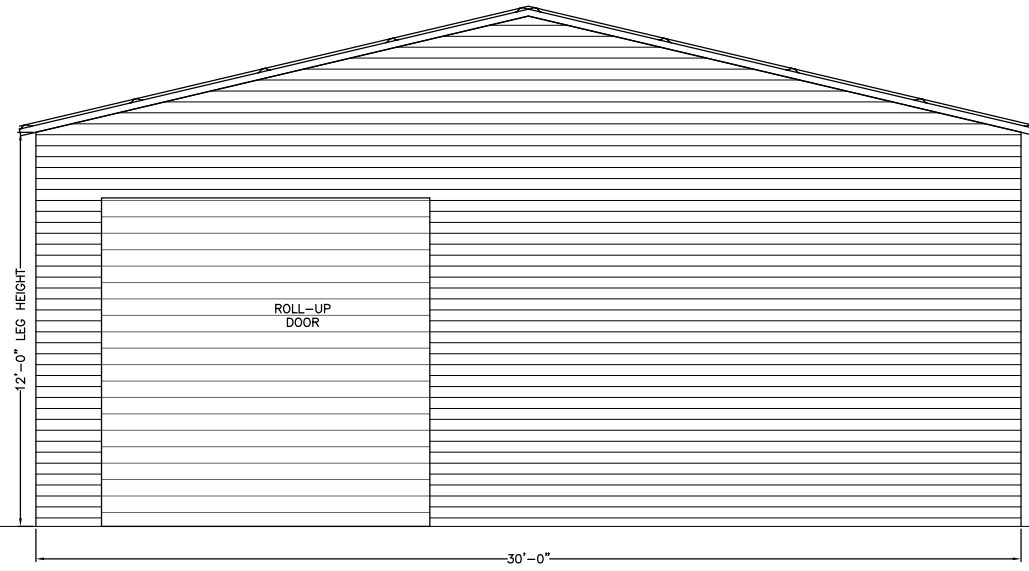
DRAWN BY:	MTB
DATE:	11/15/25
LOCATION:	47337-SW Bethlehem Ave, Fort White
SIZE:	80'L X 30'W X 12'H



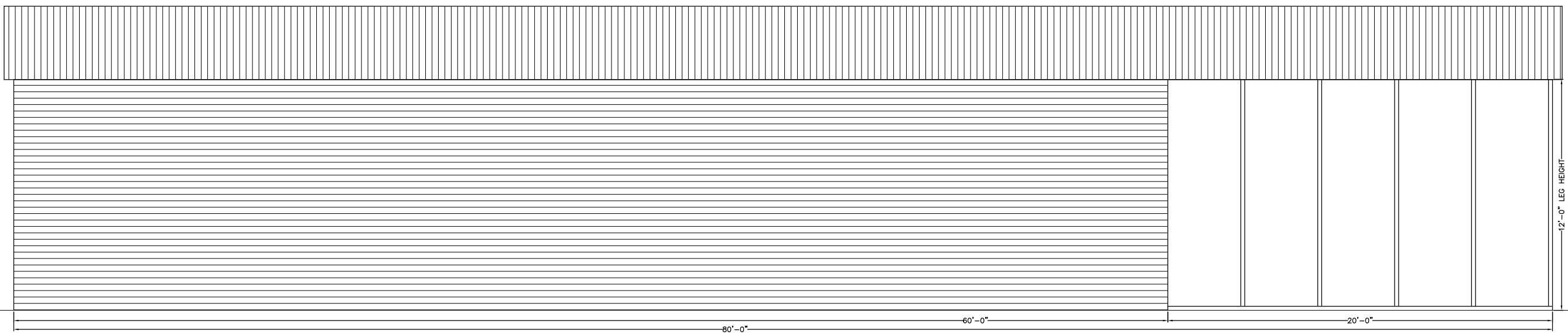
FRONT END WALL



MID END WALL



REAR END WALL



LEFT/RIGHT(MIRRORED) SIDE WALL

TITLE: SIDE & END VIEWS

Matthew T. Baldwin P.E.  
Florida License #64608  
1160 Private Road, DeLand

Sheet: 3 OF 4

THIS ITEM HAS BEEN DIGITALLY SIGNED AND SEALED BY MATTHEW T. BALDWIN, P.E. ON THE DATE ADJACENT TO THE SEAL. PRINTED COPIES OF THIS DOCUMENT ARE NOT CONSIDERED SIGNED AND SEALED AND THE SIGNATURE MUST BE VERIFIED ON ANY ELECTRONIC COPIES.

