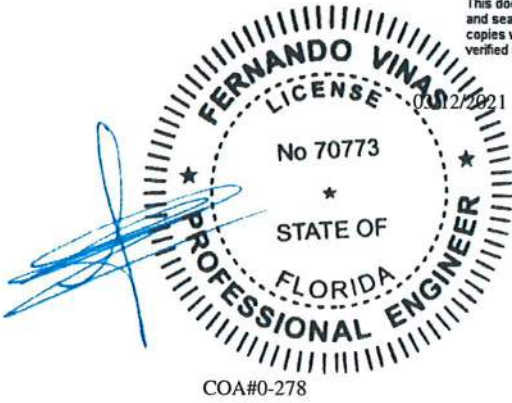


This document has been electronically signed and sealed using a Digital Signature. Printed copies without an original signature must be verified using the original electronic version.



Alpine, an ITW Company
6750 Forum Drive, Suite 305
Orlando, FL 32821
Phone: (800)755-6001
www.alpineitw.com



COA#0-278



Site Information:	Page 1:
Customer: Seminole Trusses, Inc.	Job Number: B53089a
Job Description: DANIELLO RESIDENCE	
Address: 1028 SW HIGH FIELD TERRACE, LAKE CITY, FL 32024	

Job Engineering Criteria:	
Design Code: FBC 7th Ed. 2020 Res	IntelliVIEW Version: 20.02.00A
	JRef #: 1X3N8570007
Wind Standard: ASCE 7-16 Wind Speed (mph): 130	Design Loading (psf): 37.00
Building Type: Closed	

This package contains general notes pages, 5 truss drawing(s) and 5 detail(s).

Item	Drawing Number	Truss
1	071.21.1556.46297	A1-SG 34' Gable
3	071.21.1556.51103	B1-G 29' Gable
5	071.21.1556.57960	V1-G 20' Valley
7	GBLLETIN0118	
9	PB180160118	

Item	Drawing Number	Truss
2	071.21.1556.48187	A2 34' Common
4	071.21.1556.53043	B2 29' Common
6	A14015ENC160118	
8	PB160160118	
10	REPCHRD1014	

General Notes

Truss Design Engineer Scope of Work, Design Assumptions and Design Responsibilities:

The design responsibilities assumed in the preparation of these design drawings are those specified in ANSI/TPI 1, Chapter 2; and the National Design Standard for Metal Plate Connected Wood Truss Construction, by the Truss Plate Institute. The truss component designs conform to the applicable provisions of ANSI/TPI 1 and NDS, the National Design Specification for Wood Construction by AWC. The truss component designs are based on the specified loading and dimension information furnished by others to the Truss Design Engineer. The Truss Design Engineer has no duty to independently verify the accuracy or completeness of the information provided by others and may rely on that information without liability. The responsibility for verification of that information remains with others neither employed nor controlled by the Truss Design Engineer. The Truss Design Engineer's seal and signature on the attached drawings, or cover page listing these drawings, indicates acceptance of professional engineering responsibility solely for the truss component designs and not for the technical information furnished by others which technical information and consequences thereof remain their sole responsibility.

The suitability and use of these drawings for any particular structure is the responsibility of the Building Designer in accordance with ANSI/TPI 1 Chapter 2. The Building Designer is responsible for determining that the dimensions and loads for each truss component match those required by the plans and by the actual use of the individual component, and for ascertaining that the loads shown on the drawings meet or exceed applicable building code requirements and any additional factors required in the particular application. Truss components using metal connector plates with integral teeth shall not be placed in environments that will cause the moisture content of the wood in which plates are embedded to exceed 19% and/or cause corrosion of connector plates and other metal fasteners.

The Truss Design Engineer shall not be responsible for items beyond the specific scope of the agreed contracted work set forth herein, including but not limited to: verifying the dimensions of the truss component, calculation of any of the truss component design loads, inspection of the truss components before or after installation, the design of temporary or permanent bracing and their attachment required in the roof and/or floor systems, the design of diaphragms or shear walls, the design of load transfer connections to and from diaphragms and shear walls, the design of load transfer to the foundation, the design of connections for truss components to their bearing supports, the design of the bearing supports, installation of the truss components, observation of the truss component installation process, review of truss assembly procedures, sequencing of the truss component installation, construction means and methods, site and/or worker safety in the installation of the truss components and/or its connections.

This document may be a high quality facsimile of the original engineering document which is a digitally signed electronic file with third party authentication. A wet or embossed seal copy of this engineering document is available upon request.

Temporary Lateral Restraint and Bracing:

Temporary lateral restraint and diagonal bracing shall be installed according to the provisions of BCSI chapters B1, B2, B7 and/or B10 (Building Component Safety Information, by TPI and SBCA), or as specified by the Building Designer or other Registered Design Professional. The required locations for lateral restraint and/or bracing depicted on these drawings are only for the permanent lateral support of the truss members to reduce buckling lengths, and do not apply to and may not be relied upon for the temporary stability of the truss components during their installation.

Permanent Lateral Restraint and Bracing:

The required locations for lateral restraint or bracing depicted on these drawings are for the permanent lateral support of the truss members to reduce buckling lengths. Permanent lateral support shall be installed according to the provisions of BCSI chapters B3, B7 and/or B10, or as specified by the Building Designer or other Registered Design Professional. These drawings do not depict or specify installation/erection bracing, wind bracing, portal bracing or similar building stability bracing which are parts of the overall building design to be specified, designed and detailed by the Building Designer.

Connector Plate Information:

Alpine connector plates are made of ASTM A653 or ASTM A1063 galvanized steel with the following designations, gauges and grades: W=Wave, 20ga, grade 40; H=High Strength, 20ga, grade 60; S=Super Strength, 18ga, grade 60. Information on model code compliance is contained in the ICC Evaluation Service report ESR-1118, available on-line at www.icc-es.org.

Fire Retardant Treated Lumber:

Fire retardant treated lumber must be properly re-dried and maintained below 19% or less moisture level through all stages of construction and usage. Fire retardant treated lumber may be more brittle than untreated lumber. Special handling care must be taken to prevent breakage during all handling activities.

General Notes (continued)

Key to Terms:

Information provided on drawings reflects a summary of the pertinent information required for the truss design. Detailed information on load cases, reactions, member lengths, forces and members requiring permanent lateral support may be found in calculation sheets available upon written request.

BCDL = Bottom Chord standard design Dead Load in pounds per square foot.

BCLL = Bottom Chord standard design Live Load in pounds per square foot.

CL = Certified lumber.

Des Ld = total of TCLL, TCDL, BCLL and BCDL Design Load in pounds per square foot.

FRT = Fire Retardant Treated lumber.

FRT-DB = D-Blaze Fire Retardant Treated lumber.

FRT-DC = Dricon Fire Retardant Treated lumber.

FRT-FP = FirePRO Fire Retardant Treated lumber.

FRT-FL = FlamePRO Fire Retardant Treated lumber.

FRT-FT = FlameTech Fire Retardant Treated lumber.

FRT-PG = PYRO-GUARD Fire Retardant Treated lumber.

g = green lumber.

HORZ(LL) = maximum Horizontal panel point deflection due to Live Load, in inches.

HORZ(TL) = maximum Horizontal panel point long term deflection in inches, due to Total Load, including creep adjustment.

HPL = additional Horizontal Load added to a truss Piece in pounds per linear foot or pounds.

Ic = Incised lumber.

FJ = Finger Jointed lumber.

L/# = user specified divisor for limiting span/deflection ratio for evaluation of actual L/defl value.

L/defl = ratio of Length between bearings, in inches, divided by the vertical Deflection due to creep, in inches, at the referenced panel point. Reported as 999 if greater than or equal to 999.

Loc = Location, starting location of left end of bearing or panel point (joint) location of deflection.

Max BC CSI = Maximum bending and axial Combined Stress Index for Bottom Chords for of all load cases.

Max TC CSI = Maximum bending and axial Combined Stress Index for Top Chords for of all load cases.

Max Web CSI = Maximum bending and axial Combined Stress Index for Webs for of all load cases.

NCBCLL = Non-Concurrent Bottom Chord design Live Load in pounds per square foot.

PL = additional Load applied at a user specified angle on a truss Piece in pounds per linear foot or pounds.

PLB = additional vertical load added to a Bottom chord Piece of a truss in pounds per linear foot or pounds

PLT = additional vertical load added to a Top chord Piece of a truss in pounds per linear foot or pounds.

PP = Panel Point.

R = maximum downward design Reaction, in pounds, from all specified gravity load cases, at the indicated location (Loc).

-R = maximum upward design Reaction, in pounds, from all specified gravity load cases, at the identified location (Loc).

Rh = maximum horizontal design Reaction in either direction, in pounds, from all specified gravity load cases, at the indicated location (Loc).

RL = maximum horizontal design Reaction in either direction, in pounds, from all specified non-gravity (wind or seismic) load cases, at the indicated location (Loc).

Rw = maximum downward design Reaction, in pounds, from all specified non-gravity (wind or seismic) load cases, at the identified location (Loc).

TCDL = Top Chord standard design Dead Load in pounds per square foot.

TCLL = Top Chord standard design Live Load in pounds per square foot.

U = maximum Upward design reaction, in pounds, from all specified non-gravity (wind or seismic) load cases, at the indicated location (Loc).

VERT(CL) = maximum Vertical panel point deflection in inches due to Live Load and Creep Component of Dead Load in inches.

VERT(CTL) = maximum Vertical panel point deflection ratios due to Live Load and Creep Component of Dead Load, and maximum long term Vertical panel point deflection in inches due to Total load, including creep adjustment.

VERT(LL) = maximum Vertical panel point deflection in inches due to Live Load.

VERT(TL) = maximum Vertical panel point long term deflection in inches due to Total load, including creep adjustment.

W = Width of non-hanger bearing, in inches.

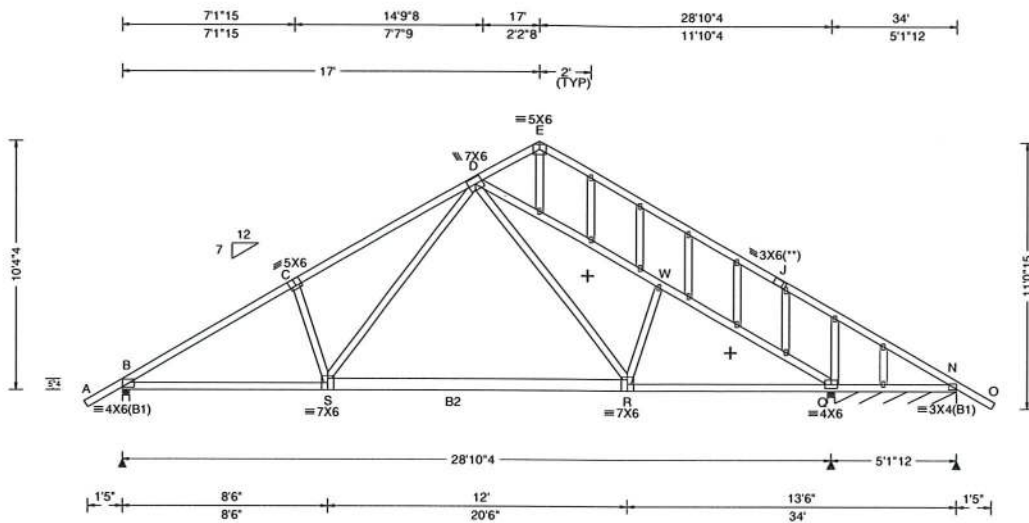
Refer to ASCE-7 for Wind and Seismic abbreviations.

Uppercase Acronyms not explained above are as defined in TPI 1.

References:

1. AWC: American Wood Council; 222 Catoclin Circle SE, Suite 201; Leesburg, VA 20175; www.awc.org.
2. ICC: International Code Council; www.iccsafe.org.
3. Alpine, a division of ITW Building Components Group Inc.: 514 Earth City Expressway, Suite 242, Earth City, MO 63045; www.alpineitw.com.
4. TPI: Truss Plate Institute, 2670 Crain Highway, Suite 203, Waldorf, MD 20601; www.tpinst.org.
5. SBCA: Wood Truss Council of America, 6300 Enterprise Lane, Madison, WI 53719; www.sbcindustry.com.

SEQN: 32983 FROM: RJL	GABL Ply: 1 Qty: 2	Job Number: B53089a DANIELLO RESIDENCE Truss Label: A1-SG 34' Gable	Cust: R 857 JRef: 1X3N8570007 T4 DrvNo: 071.21.1556.46297 JB / FV 03/12/2021
--------------------------	--------------------------	---	--



Loading Criteria (psf) TCLL: 20.00 TCDL: 7.00 BCLL: 0.00 BCDL: 10.00 Des Ld: 37.00 NCBCLL: 10.00 Soffit: 0.00 Load Duration: 1.25 Spacing: 24.0"	Wind Criteria Wind Std: ASCE 7-16 Speed: 130 mph Enclosure: Closed Risk Category: II EXP: B Kzt: NA Mean Height: 15.00 ft TCDL: 4.2 psf BCDL: 5.2 psf MWFRS Parallel Dist: 0 to h/2 C&C Dist a: 3.40 ft Loc. from endwall: Any GCpi: 0.18 Wind Duration: 1.60	Snow Criteria (Pg,Pf in PSF) Pg: NA Ct: NA CAT: NA Pf: NA Ce: NA Lu: NA Cs: NA Snow Duration: NA Building Code: FBC 7th Ed. 2020 Res. TPI Std: 2014 Rep Fac: No FT/RT:20(0)/10(0) Plate Type(s): WAVE	Def/CSI Criteria PP Deflection in loc L/defl L/# VERT(LL): 0.086 S 999 360 VERT(CL): 0.184 F 999 240 HORZ(LL): 0.035 L - - HORZ(TL): 0.076 L - - Creep Factor: 2.0 Max TC CSI: 0.849 Max BC CSI: 0.757 Max Web CSI: 0.316 VIEW Ver: 20.02.00A.1020.20	▲ Maximum Reactions (lbs), or *PLF Gravity Loc R+ / R- / Rh / Rw / U / RL Non-Gravity Loc R+ / R- / Rh / Rw / U / RL B 1596 /- /- /701 /80 /234 Q 1582 /- /- /695 /186 /- N* 98 /- /- /39 /- /- Wtr reactions based on MWFRS B Brg Width = 3.5 Min Req = 1.9 Q Brg Width = 3.5 Min Req = 1.5 N Brg Width = 60.0 Min Req = - Bearings B, Q, & Q are a rigid surface. Members not listed have forces less than 375# Maximum Top Chord Forces Per Ply (lbs) Chords Tens.Comp. Chords Tens. Comp.
--	---	---	--	--

Lumber
Top chord: 2x4 SP #1;
Bot chord: 2x4 SP #1; B2 2x6 SP #1;
Webs: 2x4 SP #3;

Plating Notes
All plates are 1.5X3 except as noted.
(**) 1 plate(s) require special positioning. Refer to scaled plate plot details for special positioning requirements.

+ MEMBER TO BE LATERALLY BRACED FOR HORIZONTAL WIND LOADS.

LATERALLY BRACE TOP CHORD BELOW FILLER AT 24" O.C. OR RIGID SHEATHING, INCLUDING A LATERAL BRACE AT CHORD ENDS.

B - C	259	-2483	E - J	59	-425
C - D	348	-2335	J - N	26	-468
D - E	80	-460			

Maximum Bot Chord Forces Per Ply (lbs)
Chords Tens.Comp. Chords Tens. Comp.

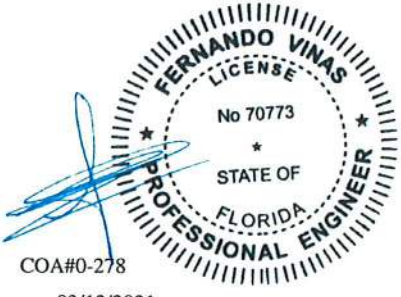
B - S	2037	-102	R - Q	2033	-69
S - R	1445	0			

Loading
Truss designed to support 1-0-0 top chord outlookers and cladding load not to exceed 5.00 PSF one face and 24.0" span opposite face. Top chord must not be cut or notched, unless specified otherwise.
Truss passed check for 20 psf additional bottom chord live load in areas with 42"-high x 24"-wide clearance.

Wind
Wind loads based on MWFRS with additional C&C member design.
Wind loading based on both gable and hip roof types.

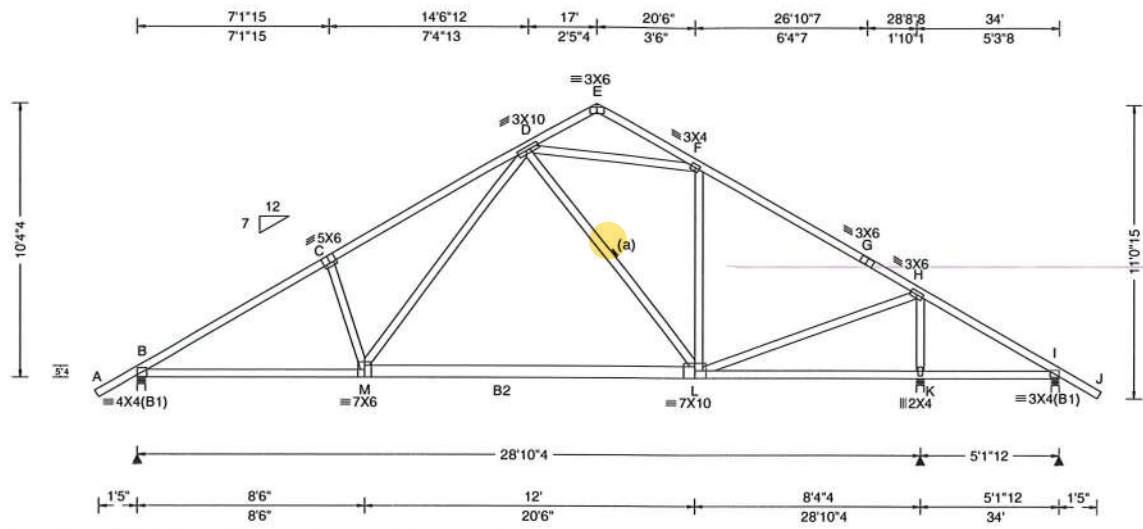
Blocking
Blocking reinforcement required to prevent buckling of members over the bearings:
Bearing 2 located at 28.7' (blocking >= 11.25" if used)

Additional Notes
See DWGS A14015ENC160118 & GBLLETIN0118 for gable wind bracing and other requirements.



****WARNING** READ AND FOLLOW ALL NOTES ON THIS DRAWING!**
****IMPORTANT** FURNISH THIS DRAWING TO ALL CONTRACTORS INCLUDING THE INSTALLERS**
Trusses require extreme care in fabricating, handling, shipping, installing and bracing. Refer to and follow the latest edition of BCSI (Building Component Safety Information, by TPI and SBCA) for safety practices prior to performing these functions. Installers shall provide temporary bracing per BCSI. Unless noted otherwise, top chord shall have properly attached structural sheathing and bottom chord shall have a properly attached rigid ceiling. Locations shown for permanent lateral restraint of webs shall have bracing installed per BCSI sections B3, B7, or B10, as applicable. Apply plates to each face of truss and position as shown above and on the Joint Details, unless noted otherwise. Refer to drawings 160A-Z for standard plate positions. Refer to job's General Notes page for additional information.
Alpine, a division of ITW Building Components Group Inc. shall not be responsible for any deviation from this drawing, any failure to build the truss in conformance with ANSI/TPI 1, or for handling, shipping, installation and bracing of trusses. A seal on this drawing or cover page listing this drawing, indicates acceptance of professional engineering responsibility solely for the design shown. The suitability and use of this drawing for any structure is the responsibility of the Building Designer per ANSI/TPI 1 Sec.2.
For more information see these web sites: Alpine: alpineitw.com; TPI: tpinst.org; SBCA: sbcindustry.com; ICC: iccsafe.org; AWC: awc.org





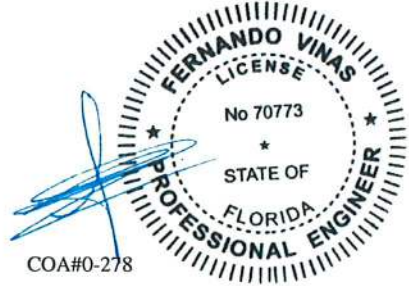
Loading Criteria (psf) TCLL: 20.00 TCDL: 7.00 BCLL: 0.00 BCDL: 10.00 Des Ld: 37.00 NCBCLL: 10.00 Soffit: 0.00 Load Duration: 1.25 Spacing: 24.0 "	Wind Criteria Wind Std: ASCE 7-16 Speed: 130 mph Enclosure: Closed Risk Category: II EXP: B Kzt: NA Mean Height: 15.00 ft TCDL: 4.2 psf BCDL: 5.2 psf MWFRS Parallel Dist: h to 2h C&C Dist a: 3.40 ft Loc. from endwall: not in 9.00 ft GCpi: 0.18 Wind Duration: 1.60	Snow Criteria (Pg,PI in PSF) Pg: NA Ct: NA CAT: NA Pf: NA Ce: NA Lu: NA Cs: NA Snow Duration: NA Building Code: FBC 7th Ed. 2020 Res. TPI Std: 2014 Rep Fac: No FT/RT:20(0)/10(0) Plate Type(s): WAVE	Defl/CSI Criteria PP Deflection in loc L/defl L/# VERT(LL): 0.076 M 999 360 VERT(CL): 0.132 M 999 240 HORZ(LL): 0.026 C - - HORZ(TL): 0.045 C - - Creep Factor: 2.0 Max TC CSI: 0.599 Max BC CSI: 0.745 Max Web CSI: 0.718 VIEW Ver: 20.02.00A.1020.20	▲ Maximum Reactions (lbs) Gravity Non-Gravity Loc R+ / R- / Rh / Rw / U / RL B 1296 /- /- /639 /- /208 K 1560 /- /- /716 /- /- I 253 /-36 /- /125 /16 /- Wind reactions based on MWFRS B Brg Width = 3.5 Min Req = 1.5 K Brg Width = 3.5 Min Req = 1.5 I Brg Width = 3.5 Min Req = 1.5 Bearings B, K, & I are a rigid surface. Members not listed have forces less than 375# Maximum Top Chord Forces Per Ply (lbs) Chords Tens.Comp. Chords Tens. Comp. B - C 125 - 1951 F - G 117 - 1167 C - D 194 - 1830 G - H 86 - 1221 Maximum Bot Chord Forces Per Ply (lbs) Chords Tens.Comp. Chords Tens. Comp. B - M 1598 - 16 M - L 1013 0 Maximum Web Forces Per Ply (lbs) Webs Tens.Comp. Webs Tens. Comp. M - D 832 - 47 L - H 1152 0 D - F 195 - 957 H - K 167 - 1443
---	---	---	---	---

Lumber
Top chord: 2x4 SP #1;
Bot chord: 2x4 SP #1; B2 2x6 SP #1;
Webs: 2x4 SP #3;

Bracing
(a) Continuous lateral restraint equally spaced on member. Or 2x4 #3 or better "T" reinforcement. 80% length of web member. Attached with 10d Box or Gun (0.128"x3",min.)nails @ 6" oc.

Loading
Truss passed check for 20 psf additional bottom chord live load in areas with 42"-high x 24"-wide clearance.

Wind
Wind loads based on MWFRS with additional C&C member design.
Wind loading based on both gable and hip roof types.

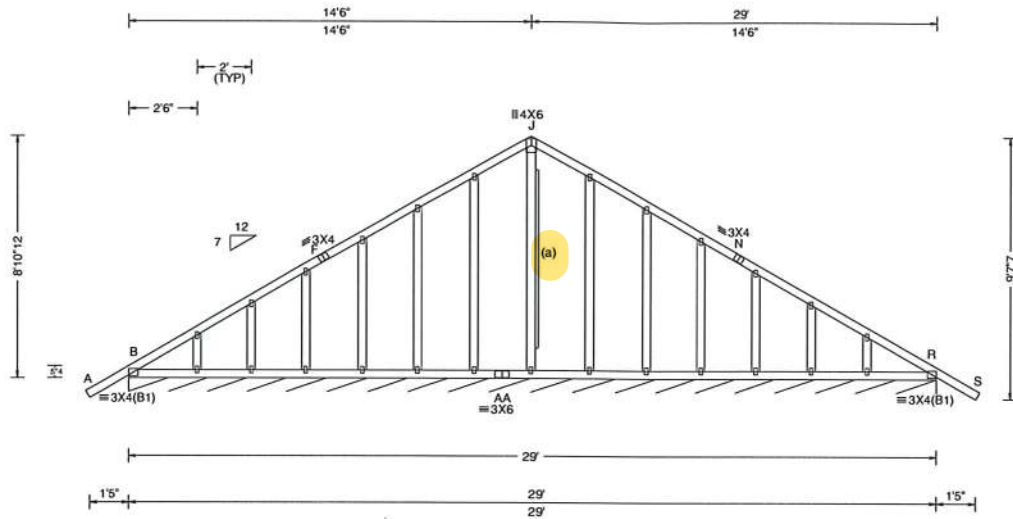


03/12/2021

****WARNING** READ AND FOLLOW ALL NOTES ON THIS DRAWING!**
****IMPORTANT** FURNISH THIS DRAWING TO ALL CONTRACTORS INCLUDING THE INSTALLERS**
Trusses require extreme care in fabricating, handling, shipping, installing and bracing. Refer to and follow the latest edition of BCSI (Building Component Safety Information, by TPI and SBCA) for safety practices prior to performing these functions. Installers shall provide temporary bracing per BCSI. Unless noted otherwise, top chord shall have properly attached structural sheathing and bottom chord shall have a properly attached rigid ceiling. Locations shown for permanent lateral restraint of webs shall have bracing installed per BCSI sections B3, B7, or B10, as applicable. Apply plates to each face of truss and position as shown above and on the Joint Details, unless noted otherwise. Refer to drawings 160A-Z for standard plate positions. Refer to job's General Notes page for additional information.
Alpine, a division of ITW Building Components Group Inc. shall not be responsible for any deviation from this drawing, any failure to build the truss in conformance with ANSI/TPI 1, or for handling, shipping, installation and bracing of trusses. A seal on this drawing or cover page listing this drawing, indicates acceptance of professional engineering responsibility solely for the design shown. The suitability and use of this drawing for any structure is the responsibility of the Building Designer per ANSI/TPI 1 Sec.2.
For more information see these web sites: Alpine: alpineitw.com; TPI: tpinst.org; SBCA: sbcindustry.com; ICC: iccsafe.org; AWC: awc.org



SEQN: 32985 FROM: RJL	GABL Ply: 1 Qty: 2	Job Number: B53089a DANIELLO RESIDENCE Truss Label: B1-G 29' Gable	Cust: R 857 JRef: 1X3N8570007 T2 DrwNo: 071.21.1556.51103 JB / FV 03/12/2021
--------------------------	--------------------------	--	--



Loading Criteria (psf) TCLL: 20.00 TCDL: 7.00 BCLL: 0.00 BCDL: 10.00 Des Ld: 37.00 NCBCLL: 10.00 Soffit: 0.00 Load Duration: 1.25 Spacing: 24.0"	Wind Criteria Wind Std: ASCE 7-16 Speed: 130 mph Enclosure: Closed Risk Category: II EXP: B Kzt: NA Mean Height: 15.00 ft TCDL: 4.2 psf BCDL: 5.2 psf MWFRS Parallel Dist: 0 to h/2 C&C Dist a: 3.00 ft Loc. from endwall: Any GCpi: 0.18 Wind Duration: 1.60	Snow Criteria (Pg,Pf in PSF) Pg: NA Ct: NA CAT: NA Pf: NA Ce: NA Lu: NA Cs: NA Snow Duration: NA Building Code: FBC 7th Ed. 2020 Res. TPI Std: 2014 Rep Fac: No FT/RT:20(0)/10(0) Plate Type(s): WAVE	Def/CSI Criteria PP Deflection in loc L/defl L/# VERT(LL): 0.001 K 999 360 VERT(CL): 0.003 K 999 240 HORZ(LL): 0.002 O - - HORZ(TL): 0.003 L - - Creep Factor: 2.0 Max TC CSI: 0.125 Max BC CSI: 0.030 Max Web CSI: 0.138 VIEW Ver: 20.02.00A.1020.20	▲ Maximum Reactions (lbs), or *PLF Gravity Non-Gravity Loc R+ / R- / Rh / Rw / U / RL R* 103 / - / - / 41 / 7 / 7 Wind reactions based on MWFRS R Brg Width = 348 Min Req = - Bearing B is a rigid surface. Members not listed have forces less than 375#
--	---	---	--	---

Lumber

Top chord: 2x4 SP #1;
Bot chord: 2x4 SP #1;
Webs: 2x4 SP #3;

Bracing

(a) 1x4 #3SRB SPF-S or better "L" reinforcement. 80% length of web member. Attach with 8d Box or Gun (0.113"x2.5",min.)nails @ 6" oc.

Plating Notes

All plates are 1.5X3 except as noted.

Loading

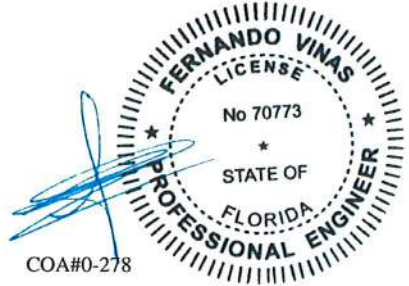
Truss designed to support 1-0-0 top chord outlookers and cladding load not to exceed 5.00 PSF one face and 24.0" span opposite face. Top chord must not be cut or notched, unless specified otherwise.

Wind

Wind loads based on MWFRS with additional C&C member design.
Wind loading based on both gable and hip roof types.

Additional Notes

See DWGS A14015ENC160118 & GBLLETIN0118 for gable wind bracing and other requirements.

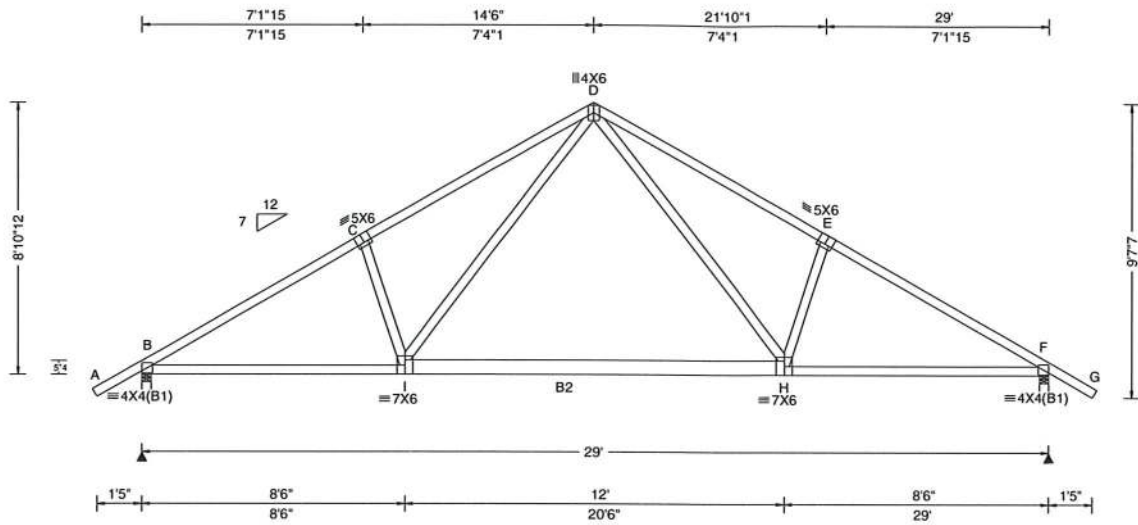


03/12/2021

****WARNING** READ AND FOLLOW ALL NOTES ON THIS DRAWING!**
****IMPORTANT** FURNISH THIS DRAWING TO ALL CONTRACTORS INCLUDING THE INSTALLERS**
Trusses require extreme care in fabricating, handling, shipping, installing and bracing. Refer to and follow the latest edition of BCSI (Building Component Safety Information, by TPI and SBCA) for safety practices prior to performing these functions. Installers shall provide temporary bracing per BCSI. Unless noted otherwise, top chord shall have properly attached structural sheathing and bottom chord shall have a properly attached rigid ceiling. Locations shown for permanent lateral restraint of webs shall have bracing installed per BCSI sections B3, B7, or B10, as applicable. Apply plates to each face of truss and position as shown above and on the Joint Details, unless noted otherwise. Refer to drawings 160A-Z for standard plate positions. Refer to job's General Notes page for additional information.
Alpine, a division of ITW Building Components Group Inc. shall not be responsible for any deviation from this drawing, any failure to build the truss in conformance with ANSI/TPI 1, or for handling, shipping, installation and bracing of trusses. A seal on this drawing or cover page listing this drawing, indicates acceptance of professional engineering responsibility solely for the design shown. The suitability and use of this drawing for any structure is the responsibility of the Building Designer per ANSI/TPI 1 Sec.2.
For more information see these web sites: Alpine: alpineitw.com; TPI: tpinst.org; SBCA: sbcindustry.com; ICC: iccsafe.org; AWC: awc.org



SEQN: 32989 FROM: RJL	COMN Ply: 1 Qty: 13	Job Number: B53089a DANIELLO RESIDENCE Truss Label: B2 29' Common	Cust: R857 JRef: 1X3N8570007 T1 DrwNo: 071.21.1556.53043 JB / FV 03/12/2021
--------------------------	---------------------------	---	---



Loading Criteria (psf) TCLL: 20.00 TCDL: 7.00 BCLL: 0.00 BCDL: 10.00 Des Ld: 37.00 NCBCLL: 10.00 Soffit: 0.00 Load Duration: 1.25 Spacing: 24.0"	Wind Criteria Wind Std: ASCE 7-16 Speed: 130 mph Enclosure: Closed Risk Category: II EXP: B Kzt: NA Mean Height: 15.00 ft TCDL: 4.2 psf BCDL: 5.2 psf MWFRS Parallel Dist: 0 to h/2 C&C Dist a: 3.00 ft Loc. from endwall: Any GCpi: 0.18 Wind Duration: 1.60	Snow Criteria (Pg,Pf in PSF) Pg: NA Ct: NA CAT: NA Pf: NA Ce: NA Lu: NA Cs: NA Snow Duration: NA Building Code: FBC 7th Ed. 2020 Res. TPI Std: 2014 Rep Fac: No FT/RT:20(0)/10(0) Plate Type(s): WAVE	Def/CSI Criteria PP Deflection in loc L/defl L/# VERT(LL): 0.091 I 999 360 VERT(CL): 0.156 I 999 240 HORZ(LL): 0.036 H - - HORZ(TL): 0.062 H - - Creep Factor: 2.0 Max TC CSI: 0.471 Max BC CSI: 0.764 Max Web CSI: 0.315 VIEW Ver: 20.02.00A.1020.20	▲ Maximum Reactions (lbs) Gravity Non-Gravity Loc R+ / R- / Rh / Rw / U / RL B 1318 /- /- /631 /70 /179 F 1318 /- /- /631 /70 /- Wind reactions based on MWFRS B Brg Width = 3.5 Min Req = 1.6 F Brg Width = 3.5 Min Req = 1.6 Bearings B & F are a rigid surface. Members not listed have forces less than 375# Maximum Top Chord Forces Per Ply (lbs) Chords Tens.Comp. Chords Tens. Comp. B - C 240 - 1992 D - E 318 - 1870 C - D 318 - 1870 E - F 240 - 1992
--	---	---	--	---

Lumber
Top chord: 2x4 SP #1;
Bot chord: 2x4 SP #1; B2 2x6 SP #1;
Webs: 2x4 SP #3;

Loading
Truss passed check for 20 psf additional bottom chord live load in areas with 42"-high x 24"-wide clearance.

Wind
Wind loads based on MWFRS with additional C&C member design.
Wind loading based on both gable and hip roof types.

Maximum Bot Chord Forces Per Ply (lbs)

Chords	Tens.Comp.	Chords	Tens. Comp.
B - I	1633 -99	H - F	1633 - 105
I - H	1052 0		

Maximum Web Forces Per Ply (lbs)

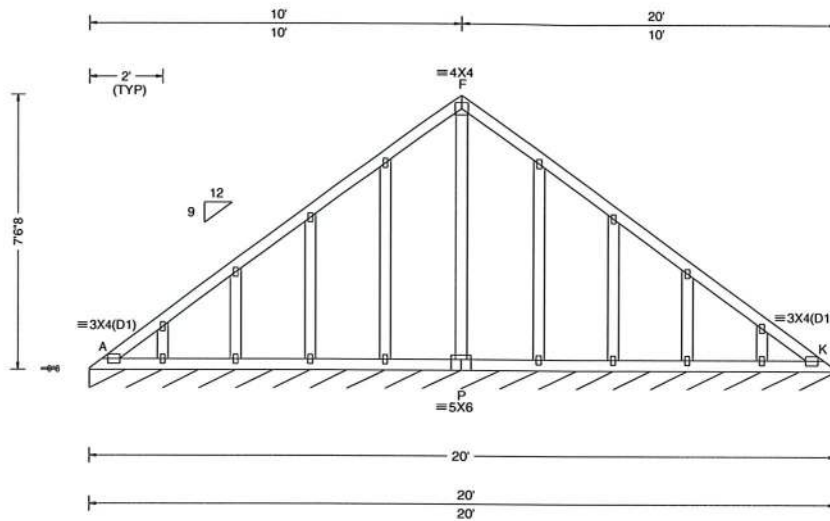
Webs	Tens.Comp.	Webs	Tens. Comp.
I - D	827 -96	D - H	827 -96



COA#0-278
03/12/2021

****WARNING** READ AND FOLLOW ALL NOTES ON THIS DRAWING!**
****IMPORTANT** FURNISH THIS DRAWING TO ALL CONTRACTORS INCLUDING THE INSTALLERS**
Trusses require extreme care in fabricating, handling, shipping, installing and bracing. Refer to and follow the latest edition of BCSI (Building Component Safety Information, by TPI and SBCA) for safety practices prior to performing these functions. Installers shall provide temporary bracing per BCSI. Unless noted otherwise, top chord shall have properly attached structural sheathing and bottom chord shall have a properly attached rigid ceiling. Locations shown for permanent lateral restraint of webs shall have bracing installed per BCSI sections B3, B7, or B10, as applicable. Apply plates to each face of truss and position as shown above and on the Joint Details, unless noted otherwise. Refer to drawings 160A-Z for standard plate positions. Refer to job's General Notes page for additional information.
Alpine, a division of ITW Building Components Group Inc, shall not be responsible for any deviation from this drawing, any failure to build the truss in conformance with ANSI/TPI 1, or for handling, shipping, installation and bracing of trusses. A seal on this drawing or cover page listing this drawing, indicates acceptance of professional engineering responsibility solely for the design shown. The suitability and use of this drawing for any structure is the responsibility of the Building Designer per ANSI/TPI 1 Sec.2.
For more information see these web sites: Alpine: alpineitw.com; TPI: tpinst.org; SBCA: sbcindustry.com; ICC: iccsafe.org; AWC: awc.org





Loading Criteria (psf)	Wind Criteria	Snow Criteria (Pg, Pf in PSF)	Defl/CSI Criteria	▲ Maximum Reactions (lbs), or * = PLF
TCLL: 20.00 TCDL: 7.00 BCLL: 0.00 BCDL: 10.00 Des Ld: 37.00 NCBCLL: 10.00 Soffit: 0.00 Load Duration: 1.25 Spacing: 24.0 *	Wind Std: ASCE 7-16 Speed: 130 mph Enclosure: Closed Risk Category: II EXP: B Kzt: NA Mean Height: 15.00 ft TCDL: 4.2 psf BCDL: 5.2 psf MWFRS Parallel Dist: 0 to h/2 C&C Dist a: 3.00 ft Loc. from endwall: Any GCpi: 0.18 Wind Duration: 1.60	Pg: NA Ct: NA CAT: NA Pf: NA Ce: NA Lu: NA Cs: NA Snow Duration: NA Building Code: FBC 7th Ed. 2020 Res. TPI Std: 2014 Rep Fac: No FT/RT:20(0)/10(0) Plate Type(s): WAVE	PP Deflection in loc L/defl L/# VERT(LL): 0.001 E 999 360 VERT(CL): 0.002 E 999 240 HORZ(LL): -0.001 D - - HORZ(TL): 0.002 E - - Creep Factor: 2.0 Max TC CSI: 0.064 Max BC CSI: 0.027 Max Web CSI: 0.137 VIEW Ver: 20.02.00A.1020.20	Gravity Non-Gravity Loc R+ /R- /Rh /Rw /U /RL K* 94 /- /- /41 /4 /8 Wind reactions based on MWFRS K Brg Width = 240 Min Req = - Bearing A is a rigid surface. Members not listed have forces less than 375#

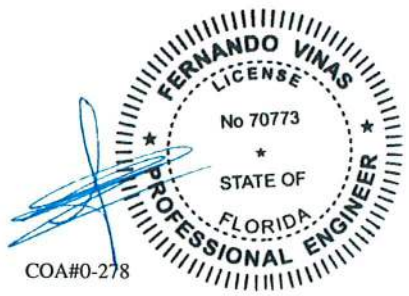
Lumber
Top chord: 2x4 SP #1;
Bot chord: 2x4 SP #1;
Webs: 2x4 SP #3;

Plating Notes
All plates are 1.5X3 except as noted.

Loading
Truss designed to support 1-0-0 top chord outlookers and cladding load not to exceed 5.00 PSF one face and 24.0" span opposite face. Top chord must not be cut or notched, unless specified otherwise.

Wind
Wind loads based on MWFRS with additional C&C member design.
Wind loading based on both gable and hip roof types.

Additional Notes
See DWGS A14015ENC160118 & GBLLETIN0118 for gable wind bracing and other requirements.



COA#0-278
03/12/2021

****WARNING**** READ AND FOLLOW ALL NOTES ON THIS DRAWING!
****IMPORTANT**** FURNISH THIS DRAWING TO ALL CONTRACTORS INCLUDING THE INSTALLERS
Trusses require extreme care in fabricating, handling, shipping, installing and bracing. Refer to and follow the latest edition of BCSI (Building Component Safety Information, by TPI and SBCA) for safety practices prior to performing these functions. Installers shall provide temporary bracing per BCSI. Unless noted otherwise, top chord shall have properly attached structural sheathing and bottom chord shall have a properly attached rigid ceiling. Locations shown for permanent lateral restraint of webs shall have bracing installed per BCSI sections B3, B7, or B10, as applicable. Apply plates to each face of truss and position as shown above and on the Joint Details, unless noted otherwise. Refer to drawings 160A-Z for standard plate positions. Refer to job's General Notes page for additional information.
Alpine, a division of ITW Building Components Group Inc. shall not be responsible for any deviation from this drawing, any failure to build the truss in conformance with ANSI/TPI 1, or for handling, shipping, installation and bracing of trusses. A seal on this drawing or cover page listing this drawing, indicates acceptance of professional engineering responsibility solely for the design shown. The suitability and use of this drawing for any structure is the responsibility of the Building Designer per ANSI/TPI 1 Sec.2.
For more information see these web sites: Alpine: alpineitw.com; TPI: tpinst.org; SBCA: sbcindustry.com; ICC: iccsafe.org; AWC: awc.org



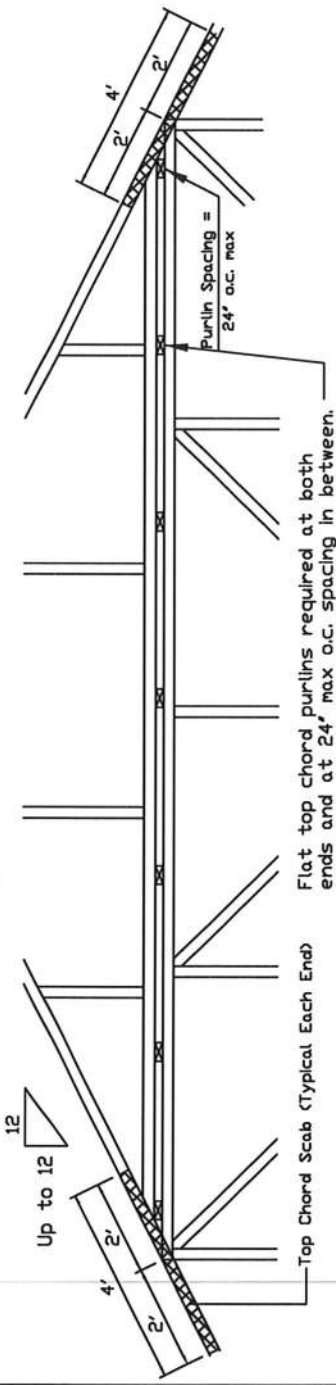
Piggyback Detail - ASCE 7-16: 160 mph, 30' Mean Height, Enclosed, Exposure C, Kzt=1.00

160 mph Wind, 30.00 ft Mean Hgt, ASCE 7-16, Enclosed Bldg, located anywhere in roof, Exp C, Wind DL= 5.0 psf (min), Kzt=1.00, D= 140 mph wind, 30.00 ft Mean Hgt, ASCE 7-16, Enclosed Bldg, located anywhere in roof, Exp D, Wind DL= 5.0 psf (min), Kzt=1.00.

Note: Top chords of trusses supporting piggyback cap trusses must be adequately braced by sheathing or purlins. The Building Engineer of Record shall provide diagonal bracing or any other suitable anchorage to permanently restrain purlins, and lateral bracing for out of plane loads over gable ends. Maximum truss spacing is 24' o.c. detail is not applicable if cap supports additional loads such as cupola, steeple, chimney or drag strut loads.

Refer to Engineer's sealed truss design drawing for piggyback and base truss specifications.

Detail A : Purlin Spacing = 24" o.c. or less

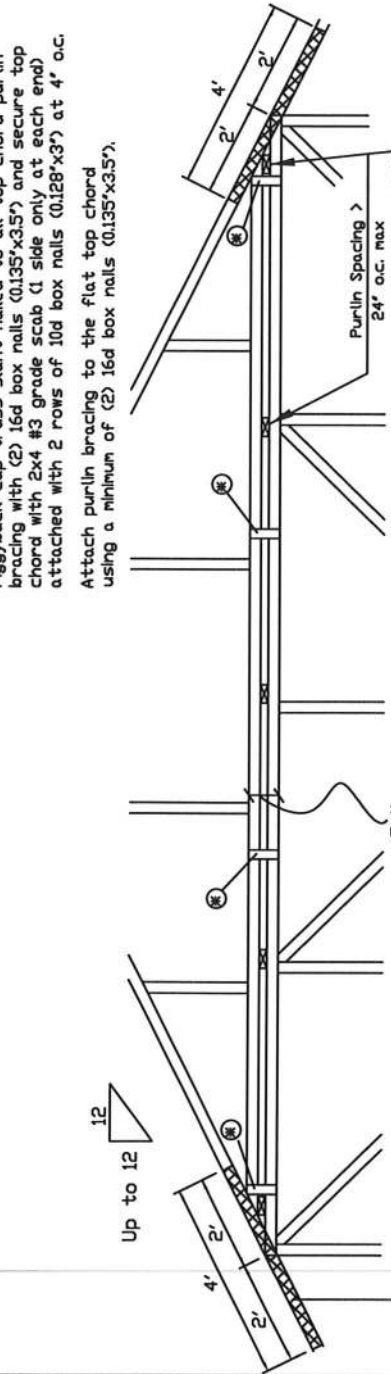


Piggyback cap truss slant nailed to all top chord purlin bracing with (2) 16d box nails (0.135"x3.5") and secure top chord with 2x4 #3 grade scab (1 side only at each end) attached with 2 rows of 10d box nails (0.128"x3") at 4' o.c.

Attach purlin bracing to the flat top chord using (2) 16d box nails (0.135"x3.5").

The top chord #3 grade 2x4 scab may be replaced with either of the following: (1) 3X8 Trulox plate attached with (8) 0.120"x1.375" nails, (4) into cap TC & (4) into base truss TC or (1) 28PB wave piggyback plate attached to the piggyback truss TC and attached to the base truss TC with (4) 0.120"x1.375" nails. Note: Nailing thru holes of wave plate is acceptable.

Detail B : Purlin Spacing > 24" o.c.



Piggyback cap truss slant nailed to all top chord purlin bracing with (2) 16d box nails (0.135"x3.5") and secure top chord with 2x4 #3 grade scab (1 side only at each end) attached with 2 rows of 10d box nails (0.128"x3") at 4' o.c.

Attach purlin bracing to the flat top chord using a minimum of (2) 16d box nails (0.135"x3.5").

Note: If purlins or sheathing are not specified on the flat top of the base truss, purlins must be installed at 24' o.c. max. and use Detail A.

- In addition, provide connection with one of the following methods:
 - Trulox**
Use 3X8 Trulox plates for 2x4 chord member, and 3X10 Trulox plates for 2x6 and larger chord members. Attach to each face @ 8' o.c. with (4) 0.120"x1.375" nails into cap bottom chord and (4) in base truss top chord. Gussets in base truss top chord. Trulox plates may be staggered 4' o.c. front to back faces.
 - APA Rated Gusset**
8"x8"x7/16" (min) APA rated sheathing gussets (each face). Attach @ 8' o.c. with (8) @ common (0.131"x2") nails per gusset, (4) in cap bottom chord and (4) in base truss top chord. Gussets may be staggered 4' o.c. front to back faces.
 - 2x4 Vertical Scabs**
2x4 SPF #2; Full chord depth scabs (each face). Attach @ 8' o.c. with (6) 10d box nails (0.128"x3") per scab, (3) in cap bottom chord and (3) in base truss top chord. Scabs may be staggered 4' o.c. front to back faces.
 - 28PB Wave Piggyback Plate**
Use 28PB wave piggyback plate to each face @ 8' o.c. Attach teeth to piggyback at top of (4) 0.120"x1.375" nails per face per ply. o.c. front to back faces. Piggyback plates may be staggered 4' o.c. front to back faces.

ALPINE
AN ITW COMPANY

1137233 Riverport Drive
Suite 200
Maryland Heights, MO 63043

REF PIGGYBACK
DATE 01/02/2018
DRWG PBI60160118

SPACING 24.0'

No 70773

STATE OF FLORIDA

PROFESSIONAL ENGINEER

FERNANDO J. VINA

COA#0-278

01/02/2018

IMPORTANT: READ AND FOLLOW ALL NOTES ON THIS DRAWING TO ALL CONTRACTORS INCLUDING THE INSTALLERS.

Trusses require extreme care in fabricating, handling, shipping, installing and bracing. Refer to and follow the latest edition of BCSI Building Component Safety Information, by TPI and SBCA for safety practices prior to performing these functions. Installers shall provide temporary bracing per BCSI. Trusses shall be properly attached and braced. Trusses shall have a properly attached rigid walling for safety. Trusses shall have bracing installed per BCSI sections B3, B7 or B10, as applicable. Apply plates to each face of truss and position as shown above and on the Joint Details, unless noted otherwise. Refer to drawings 160A-Z for standard plate positions.

Alpine, a division of ITW Building Components Group Inc. shall not be responsible for any deviation from this drawing, any failure to build the truss in conformance with ANSI/TPI 1, or for handling, shipping, installing or bracing. A seal on this drawing or cover page listing this drawing, indicates acceptance of professional engineering responsibility solely for the design shown. The suitability and use of this drawing for any structure is the responsibility of the Building Designer per ANSI/TPI 1 Sec.2.

For more information see this Job's general notes page and these web sites
ALPINE: www.alpineitw.com TPI: www.tpinet.org SBCA: www.sbcainc.org ICC: www.iccsafe.org

Piggyback Detail - ASCE 7-16: 180 mph, 30' Mean Hgt, Partially Enclosed, Exp. C, Kzt=1.00

180 mph Wind, 30.00 ft Mean Hgt, ASCE 7-16, Part. Enclosed Bldg. located anywhere in roof, Exp C, Wind DL= 5.0 psf (min), Kzt=1.0.
 Dr 160 mph wind, 30.00 ft Mean Hgt, ASCE 7-16, Part. Enclosed Bldg. located anywhere in roof, Exp D, wind DL= 5.0 psf (min), Kzt=1.0.

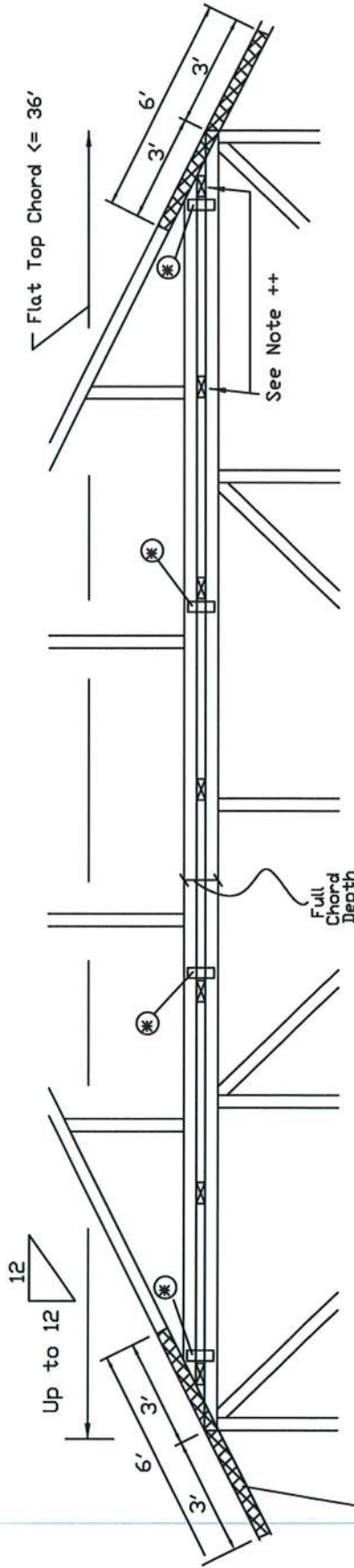
Note: Top chords of trusses supporting piggyback cap trusses must be adequately braced by sheathing or purlins. The Building Engineer of Record shall provide diagonal bracing or any other suitable anchorage to permanently restrain purlins, and lateral bracing for out of plane loads over gable ends.

Maximum truss spacing is 24' o.c. detail is not applicable if cap supports additional loads such as cupola, steeple, chimney or drag strut loads.

Refer to Engineer's sealed truss design drawing for piggyback and base truss specifications.

Piggyback cap truss slant nailed to all top chord purlin bracing with (2) 16d box nails (0.135"x3.5") and secure top chord with 2x4 #3 grade scab (1 side only at each end) attached with 2 rows of 10d box nails (0.128"x3") at 4' o.c.

Flat top chord purlins required at both ends and at a maximum of 24' intervals unless otherwise noted on base truss design drawing. Attach purlin bracing to the flat top chord using a minimum of (2) 16d box nails (0.135"x3.5").

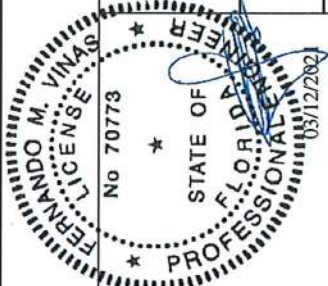


Top Chord Scab (Typical Each End)

In addition, provide connection with one of the following methods:

Trulox Use 3x8 Trulox plates for 2x4 chord member, and 3x10 Trulox plates for 2x6 and larger chord members. Attach to each face @ 8' o.c. with (4) 0.120"x1.375" nails into cap bottom chord and (4) in base truss top chord. Trulox plates may be staggered 4' o.c. front to back faces.	28PB Wave Piggyback Plate Use 28PB wave piggyback plate to each face @ 8' o.c. Attach teeth to piggyback at time of fabrication. Attach to supporting truss with (4) 0.120"x1.375" nails per face per ply. Piggyback plates may be staggered 4' o.c. front to back faces.
APA Rated Gusset 8"x8"x7/16" (min) APA rated sheathing gussets (each face). Attach @ 8' o.c. with (8) 6d common (0.113"x2") nails per gusset. (4) in cap bottom chord and (4) in base truss top chord. Gussets may be staggered 4' o.c. front to back faces.	2x4 Vertical Scabs 2x4 SPF #2, full chord depth scabs (each face). Attach @ 8' o.c. with (6) 10d box nails (0.128"x3") per scab. (3) in cap bottom chord and (3) in base truss top chord. Scabs may be staggered 4' o.c. front to back faces.

REF PIGGYBACK
 DATE 01/02/2018
 DRWG PBI80160118



WARNING: READ AND FOLLOW ALL NOTES ON THIS DRAWING. SUBMITTANTS FURNISH THIS DRAWING TO ALL CONTRACTORS INCLUDING THE INSTALLERS.
 Trusses require extreme care in fabricating, handling, shipping, installing and bracing. Refer to and follow the latest edition of BCSI Building Component Safety Information, by TPI and SBCA for safety practices prior to performing these functions. Installers shall provide temporary bracing and bracing gussets noted otherwise. Top chord shall have properly attached structural sheathing and bottom chord shall have bracing installed per BCSI sections B3, B7 or B10, as applicable. Apply plates to each face of truss and position as shown above and on the Joint Details, unless noted otherwise.
 Alpine, a division of ITV Building Components Group Inc. shall not be responsible for any deviation from this drawing, any failure to build the truss in conformance with ANSI/TPI 1, or for handling, shipping, installation, bracing or trusses.
 The manufacturer of the trusses shall be responsible for the design shown. The suitability and use of the engineering responsibility solely for the design shown. The suitability and use of the design for any structure is the responsibility of the Building Designer per ANSI/TPI 1 Sec.2.
 For more information see this job's general notes page and these web sites
 ALPINE: www.alpineinc.com TPI: www.tpiinc.org SBCA: www.sbcaindustry.org ICC: www.iccsafe.org

ALPINE
 AN ITV COMPANY
 115141 Earth City Expressway
 11 Suite 242
 11 Earth City, MO 63045

COA#0-278
 SPACING 24.0'

Cracked or Broken Member Repair Detail

Load Duration = 0%
Member forces may be increased for Duration of Load

This drawing specifies repairs for a truss with broken chord or web member.

This design is valid only for single ply trusses with 2x4 or 2x6 broken members. No more than one break per chord panel and no more than two breaks per truss are allowed. Contact the truss manufacturer for any repairs that do not comply with this detail.

(B) = Damaged area, 12' max length of damaged section
(L) = Minimum nailing distance on each side of damaged area (B)
(S) = Two 2x4 or two 2x6 side members, same size, grade, and species as damaged member. Apply one scab per face. Minimum side member length(s) = $(2)(L) + (B)$

Scab member length (S) must be within the broken panel.

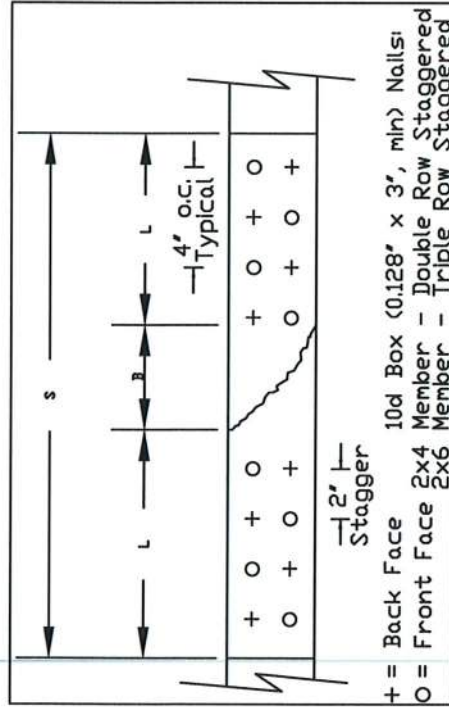
Nail into 2x4 members using two (2) rows at 4' o.c., rows staggered.
Nail into 2x6 members using three (3) rows at 4' o.c., rows staggered.
Nail using 10d box or gun nails (0.128"x3", min) into each side member.

The maximum permitted lumber grade for use with this detail is limited to Visual grade #1 and MSR grade 1650F.

This repair detail may be used for broken connector plate at mid-panel splices.

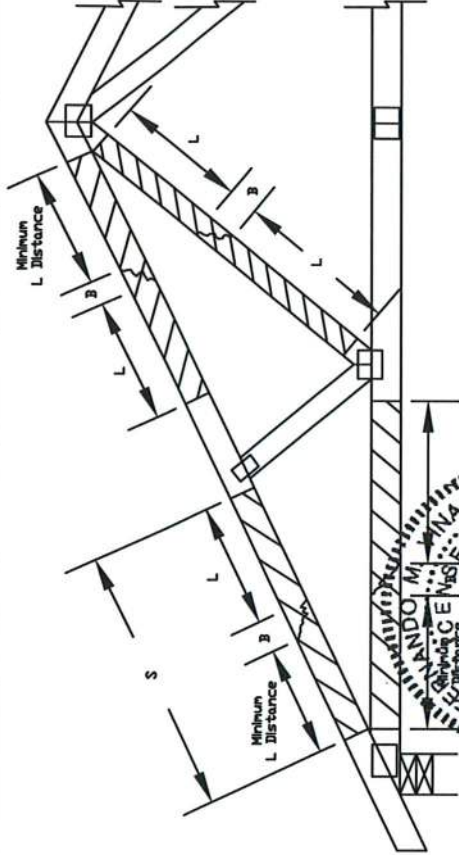
This repair detail may not be used for damaged chord or web sections occurring within the connector plate area.

Broken chord may not support any tie-in loads.



Nail Spacing Detail

Member	Size	L	Maximum Member Axial Force				
			SPF-C	HF	DF-L	SYP	
Web Only	2x4	12'	620#	635#	730#	800#	
Web Only	2x4	18'	975#	1055#	1295#	1415#	
Web or Chord	2x4	24'	975#	1055#	1495#	1745#	
Web or Chord	2x6		1465#	1585#	2245#	2620#	
Web or Chord	2x4	30'	1910#	1960#	2315#	2555#	
Web or Chord	2x6		2230#	2365#	3125#	3575#	
Web or Chord	2x4	36'	2470#	2530#	2930#	3210#	
Web or Chord	2x6		3535#	3635#	4295#	4745#	
Web or Chord	2x4	42'	2975#	3045#	3505#	3835#	
Web or Chord	2x6		4395#	4500#	5225#	5725#	
Web or Chord	2x4	48'	3460#	3540#	4070#	4445#	
Web or Chord	2x6		5165#	5280#	6095#	6660#	



ALPINE
AN ITW COMPANY

115141 Earth City Expressway
11 Suite 1242
11 Earth City, MO 63045

COA#0-278

SPACING 24.0' MAX

IMPORTANT: READ AND FOLLOW ALL NOTES ON THIS DRAWING INCLUDING THE INSTALLERS.

Trusses require extreme care in fabricating, handling, shipping, installing and bracing. Refer to and follow the latest edition of BCSI Guiding Component Safety Information, by TPI and SIBC for safety practices prior to performing these functions. Installers shall provide temporary bracing per BCSI. Unless noted otherwise, top chord shall have properly attached structural sheathing and bottom chord shall have properly attached BCSI girding. Trusses shall be braced in accordance with BCSI. Refer to drawings 160A-Z for standard plate positions.

Alpha, a division of ITW Building Components Group Inc. shall not be responsible for any deviation from this drawing, any failure to build the truss in conformance with ANSI/TPI 1, or for handling, shipping, installation, bracing or use of trusses.

Alpha is not responsible for the design of the truss. The responsibility of the professional engineering structure is the responsibility of the building designer per ANSI/TPI 1, Sec.2.

For more information see this job's general notes page and these web sites:
ALPINE: www.alphnet.com TPI: www.tpi.net SIBC: www.sibcindustry.org ICD: www.icdusa.org

NO 70773

STATE OF FLORIDA

PROFESSIONAL ENGINEER

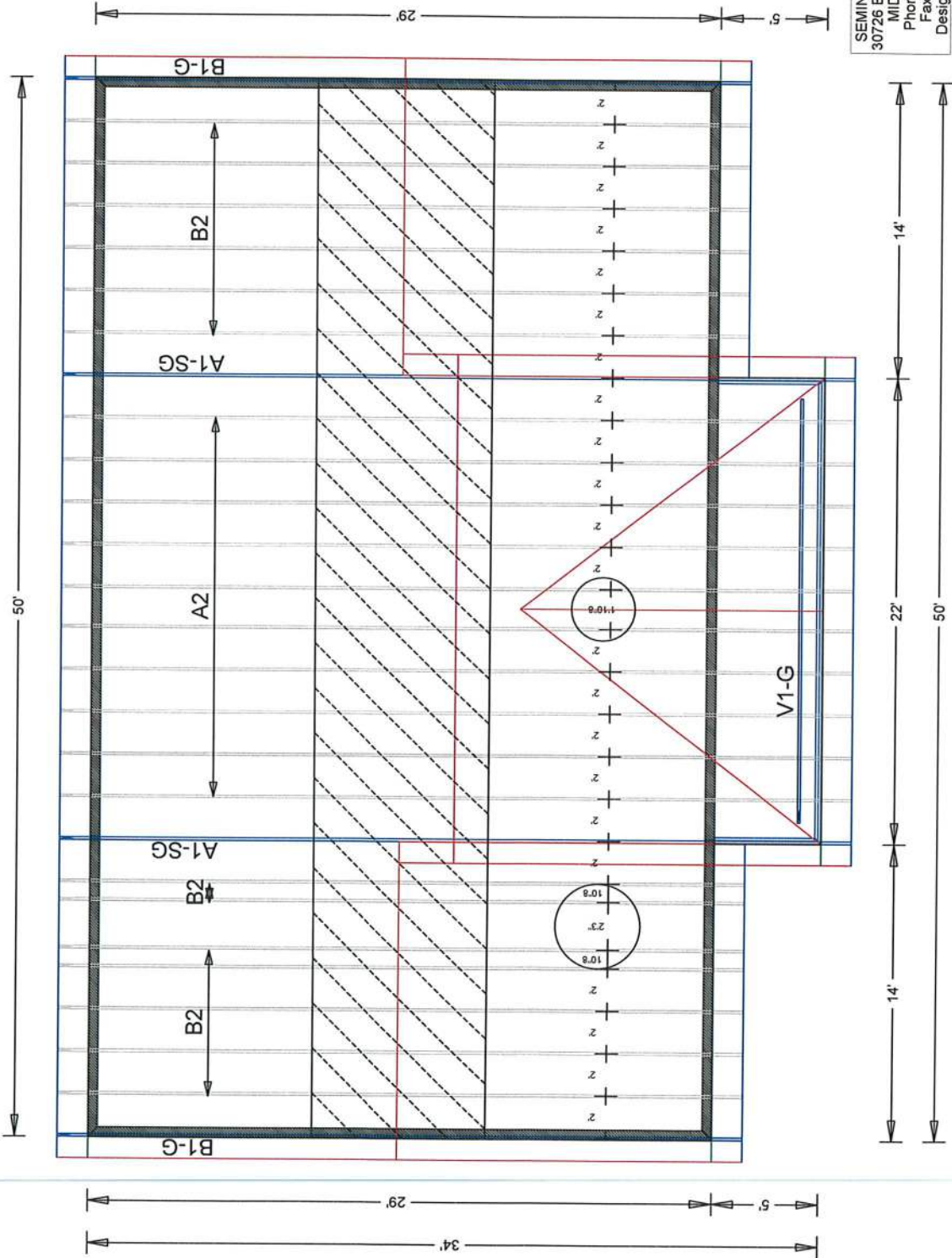
03/12/2011

REF MEMBER REPAIR

DATE 10/01/14

DRWG REPCRD1014

ALL WALLS SHOWN TO BE BEARING
 AMERICA'S HOME PLACE, INC.
 DANIELLO RESIDENCE ~ JILLIAN-A



SEMINOLE TRUSSES INC.
 30726 Bluestar Memorial Hwy.
 MIDWAY FL 32343
 Phone (850) 575-0102
 Fax (850) 575-4413
 Design By Robert J. Little

Job Name: DANIELLO RESIDENCE
 Customer: America's Home Place
 Designer: ROBERT J. LITTLE
 PlanName: JILLIAN-A
 Created : 03-15-2021
 SemRef# : B53089a

JOB NO:
 B53089a

PAGE NO:
 1 OF 1