

120 Connor St NE
Live Oak, FL 32064

Ph. 800-231-0026
www.apex-mbs.com

BUILDER / CONTRACTOR RESPONSIBILITIES

IT IS THE RESPONSIBILITY OF THE BUILDER/CONTRACTOR TO INSURE THAT ALL PROJECT PLANS AND SPECIFICATIONS COMPLY WITH THE APPLICABLE REQUIREMENTS OF ANY GOVERNING BUILDING AUTHORITIES. THE SUPPLYING OF SEALED ENGINEERING DATA AND DRAWINGS FOR THE METAL BUILDING SYSTEM DOES NOT IMPLY OR CONSTITUTE AN AGREEMENT THAT THE METAL BUILDING SYSTEM MANUFACTURER OR ITS DESIGN ENGINEER IS ACTING AS THE ENGINEER OF RECORD OR DESIGN PROFESSIONAL FOR A CONSTRUCTION PROJECT.

THE CONTRACTOR MUST SECURE ALL REQUIRED APPROVALS AND PERMITS FROM THE APPROPRIATE AGENCY AS REQUIRED. APPROVAL OF THE METAL BUILDING SYSTEM MANUFACTURER'S DRAWINGS AND CALCULATIONS INDICATE THAT THE METAL BUILDING SYSTEM MANUFACTURER CORRECTLY INTERPRETED AND APPLIED THE REQUIREMENTS OF THE CONTRACT DRAWINGS AND SPECIFICATIONS. (SECT. 4.2.1 AISC CODE OF STANDARD PRACTICES, 9TH ED.)

WHERE DISCREPANCIES EXIST BETWEEN THE METAL BUILDING SYSTEM MANUFACTURER'S STRUCTURAL STEEL PLANS AND THE PLANS FOR OTHER TRADES, THE STRUCTURAL STEEL PLANS SHALL GOVERN. (SECT. 3.3 AISC CODE OF STANDARD PRACTICE 9TH ED.)

DESIGN CONSIDERATIONS OF ANY MATERIALS IN THE STRUCTURE WHICH ARE NOT FURNISHED BY THE METAL BUILDING SYSTEM MANUFACTURER ARE THE RESPONSIBILITY OF THE CONTRACTORS AND ENGINEERS OTHER THAN THE METAL BUILDING SYSTEM MANUFACTURER'S ENGINEER UNLESS SPECIFICALLY INDICATED.

THE CONTRACTOR IS RESPONSIBLE FOR ALL ERECTION OF STEEL AND ASSOCIATED WORK IN COMPLIANCE WITH THE METAL BUILDING SYSTEM MANUFACTURER "FOR CONSTRUCTION" DRAWINGS.

ALL BRACING AS SHOWN AND PROVIDED BY THE METAL BUILDING SYSTEM MANUFACTURER FOR THIS BUILDING IS REQUIRED AND SHALL BE INSTALLED BY THE ERECTOR AS A PERMANENT PART OF THE STRUCTURE. TEMPORARY SUPPORTS, SUCH AS TEMPORARY GUYS, BRACES, FALSE WORK, CRIBBING OR OTHER ELEMENTS REQUIRED FOR THE ERECTION OPERATION WILL BE DETERMINED AND FURNISHED AND INSTALLED BY THE ERECTOR. THESE TEMPORARY SUPPORTS WILL SECURE THE STEEL FRAMING, OR ANY PARTLY ASSEMBLED STEEL FRAMING, AGAINST LOADS COMPARABLE IN INTENSITY TO THOSE FOR WHICH THE STRUCTURE WAS DESIGNED, RESULTING FROM WIND, SEISMIC FORCES AND ERECTION OPERATIONS, BUT NOT THE LOADS RESULTING FROM THE PERFORMANCE OF WORK BY OR THE ACTS OF OTHERS, NOR SUCH UNPREDICTABLE LOADS AS THOSE DUE TO TORNADO, EXPLOSION, OR COLLISION. (SECT. 7.9.1 AISC CODE OF STANDARD PRACTICE, 9TH ED.)

WARNING: IN NO CASE SHOULD GALVALUME STEEL PANELS BE USED IN CONJUNCTION WITH LEAD OR COPPER. BOTH LEAD AND COPPER HAVE HARMFUL CORROSION EFFECTS ON THE ALUMINUM ZINC ALLOY COATING WHEN THEY ARE USED IN CONTACT WITH GALVALUME STEEL PANELS. EVEN RUN-OFF FROM COPPER FLASHING, WIRING, OR TUBING ONTO GALVALUME SHOULD BE AVOIDED.

BUILDING LOADS / DESCRIPTION:

WIDTH: 30 LENGTH: 60 HEIGHT: 12 / 12
(BUILDING DIMENSIONS ARE NOMINAL. REFER TO PLANS).

THIS STRUCTURE IS DESIGNED UTILIZING THE LOADS INDICATED AND APPLIED AS REQUIRED BY: IBC 18 (FBC 2020)

THE CONTRACTOR IS TO CONFIRM THAT THESE LOADS COMPLY WITH THE REQUIREMENTS OF THE LOCAL BUILDING DEPARTMENT.

ROOF DEAD LOAD: 2.000 PSF (ROOF PANELS & PURLINS)

COLLATERAL LOAD: 1 PSF

ROOF LIVE LOAD: 20.00 PSF

ROOF SNOW LOAD: 0 PSF

BASIC WIND SPEED: 120 MPH

SEISMIC ZONE: B

WIND EXPOSURE: B

IMPORTANCE FACTORS:

WIND LOAD: 1.00

SNOW LOAD 1.0000

SEISMIC LOAD 1.00



ROOF PANELS:

COLOR: Galvalume 26ga.

WALL PANELS:

COLOR: Need Std. Color

TRIM COLORS:

CABLE: Need Std. Color

CORNER: Need Std. Color

EAVE: Need Std. Color

FRAMED OPENINGS: Need Std. Color

LINER PANELS:

COLOR: N/A

LINER TRIM:

COLOR: N/A

DEFLECTION LIMITS:

EW COL: 180
EW RAF LIVE: 180
EW RAF WIND: 180
WALL GIRT: 90
PURL LIVE: 180
PURL WIND: 150
WALL PANEL: 60
ROOF PANEL LIVE: 60
ROOF PANEL WIND: 60
RF HORIZONTAL: 60
RF VERTICAL: 180
WIND BENT: 60
RF CRANE: 100
RF SEIS: 50
WIND BENT SEIS: 50

APPROVAL NOTES

THE FOLLOWING CONDITIONS APPLY IN THE EVENT THAT THESE DRAWINGS ARE USED AS APPROVAL DRAWINGS: IT IS IMPERATIVE THAT ANY CHANGES TO THESE DRAWINGS BE MADE IN CONTRASTING INK (PREFERABLY RED INK), HAVE ALL INSTANCES OF CHANGE CLEARLY INDICATED, AND BE LEGIBLE AND UNAMBIGUOUS.

A SIGNATURE AND DATE IS REQUIRED ON ALL PAGES.

MANUFACTURER RESERVES THE RIGHT TO RE-SUBMIT DRAWINGS WITH EXTENSIVE OR COMPLEX CHANGES REQUIRED TO AVOID MISFABRICATION. THIS MAY IMPACT THE DELIVERY SCHEDULE. APPROVAL OF THESE DRAWINGS INDICATES CONCLUSIVELY THAT THE METAL BUILDING SYSTEM MANUFACTURER HAS CORRECTLY INTERPRETED THE CONTRACT REQUIREMENTS, AND FURTHER CONSTITUTES AGREEMENT THAT THE BUILDING AS DRAWN WITH INDICATED CHANGES REPRESENTS THE TOTAL OF THE MATERIALS TO BE SUPPLIED BY MANUFACTURER. ANY CHANGES NOTED ON THE DRAWINGS NOT IN CONFORMANCE WITH THE TERMS AND REQUIREMENTS OF THE CONTRACT BETWEEN MANUFACTURER AND ITS CUSTOMER ARE NOT BINDING ON MANUFACTURER UNLESS SUBSEQUENTLY SPECIFICALLY ACKNOWLEDGED AND AGREED TO IN WRITING BY CHANGE ORDER OR SEPARATE DOCUMENTATION. MANUFACTURER RECONGNIZES THAT RUBBER STAMPS ARE ROUTINELY USED FOR INDICATING APPROVAL, DISAPPROVAL, REJECTION, OR MERE REVIEW OF THE DRAWINGS SUBMITTED. HOWEVER, MANUFACTURER DOES NOT ACCEPT CHANGES OR ADDITIONS TO CONTRACTUAL TERMS AND CONDITIONS THAT MAY APPEAR WITH USE OF A STAMP OR SIMILIAR INDICATION OF APPROVAL, DISAPPROVAL, ETC. SUCH LANGUAGE APPLIED TO MANUFACTURER'S DRAWINGS BY THE CUSTOMER, ARCHITECT, ENGINEER, OR ANY OTHER PARTY WILL BE CONSIDERED AS UNACCEPTABLE ALTERNATIONS TO THESE DRAWING NOTES, AND WILL NOT ALTER THE CONTRACTUAL RIGHTS AND OBLIGATIONS EXISTING BETWEEN MANUFACTURER AND ITS CUSTOMER.

IMPORTANT NOTE: FINAL DETAILING, FABRICATION, AND DELIVERY DATE OF THIS PROJECT CANNOT BE COMPLETED UNTIL THE SIGNED APPROVALS ARE RETURNED TO THE METAL BUILDING MANUFACTURER.

GENERAL NOTES:

1) MATERIALS : MINIMUM YIELD:
HOT ROLLED BAR Fy = 50.0 ksi MIN.
STRUCTURAL STEEL SHEET Fy = 50.0 ksi MIN.
STRUCTURAL STEEL PLATE Fy = 50.0 ksi MIN.
COLD FORMED SHAPES Fy = 57.0 ksi MIN.
WALL SHEETING Fy = 60.0 ksi MIN.
ROOF SHEETING Fy = 60.0 ksi MIN.
BOLTS A307 & A325
THE METAL BUILDING MANUFACTURER RESERVES THE RIGHT TO SUBSTITUTE THE ABOVE MATERIALS WITH EQUAL OR BETTER MATERIAL.

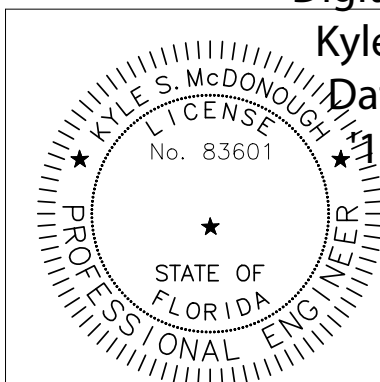
2) BOLT TIGHTENING REQUIREMENTS:

ALL HIGH STRENGTH BOLTS ARE A325 UNLESS NOTED OTHERWISE. HIGH STRENGTH BOLTS SHALL BE TIGHTENED BY THE TURN OF THE NUT METHOD IN ACCORDANCE WITH THE LATEST EDITION AISC "SPECIFICATION FOR STRUCTURAL JOINTS USING ASTM A325 OR A490 BOLTS". A325 BOLTS SHALL BE INSTALLED WITH OUT WASHERS WHEN TIGHTENED BY THE "TURN OF THE NUT" METHOD. ALL BOLTED CONNECTIONS, FOR SHEAR/BEARING CONNECTION TYPE WITH BOLT THREADS EXCLUDED FROM THE SHEAR PLANE SHALL BE SNUG TIGHT ONLY.

3) ALL STRUCTUAL STEEL TO RECEIVE A RUST INHIBITIVE PRIMER. THIS PAINT IS NOT INTENDED FOR LONG TERM EXPOSURE TO THE ELEMENTS.

Digitally signed by
Kyle McDonough
Date: 2021.08.12

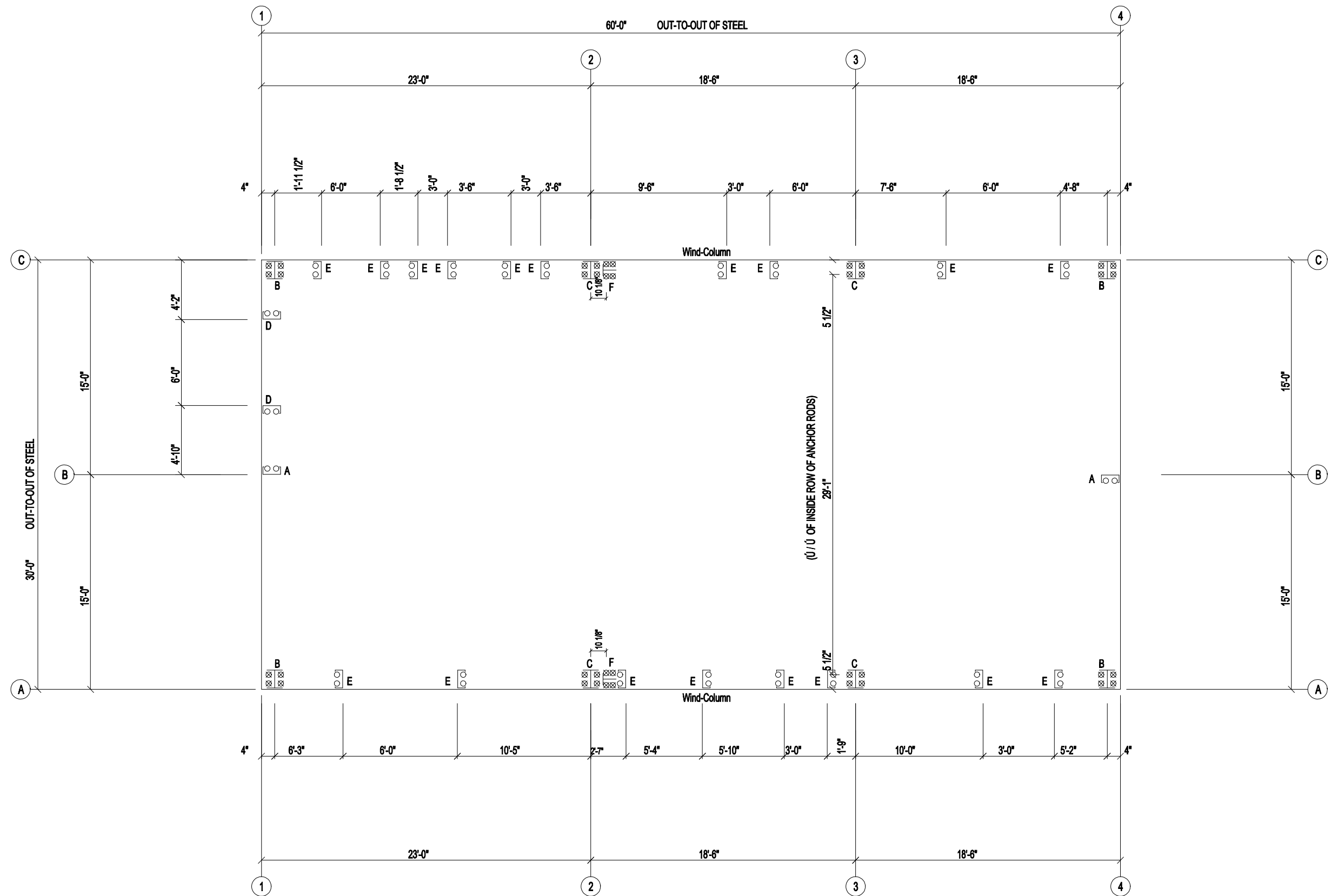
This document has been electronically signed by Kyle S. McDonough using a Digital Signature and Date. This electronic signature is generated via a third-party verification service, and the application of it signs and certifies the entire PDF document. As such, only the first page of this documents requires a digital verified signature. Printed copies of this document are not considered signed and sealed and the signature must be verified on any electronic copies.



12:34:00 -04'00

△		
△		
△		
△		
△	8/12/2021	FOR PERMIT
REV.	DATE	REVISION

PROJECT: LarryLaird
JOB NUMBER: 21-875

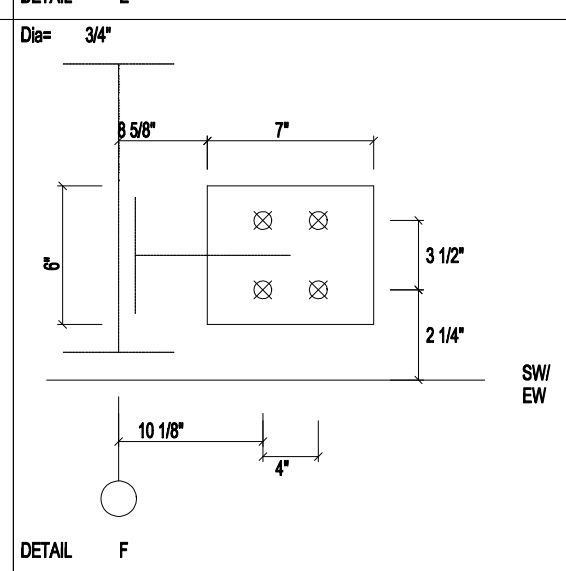
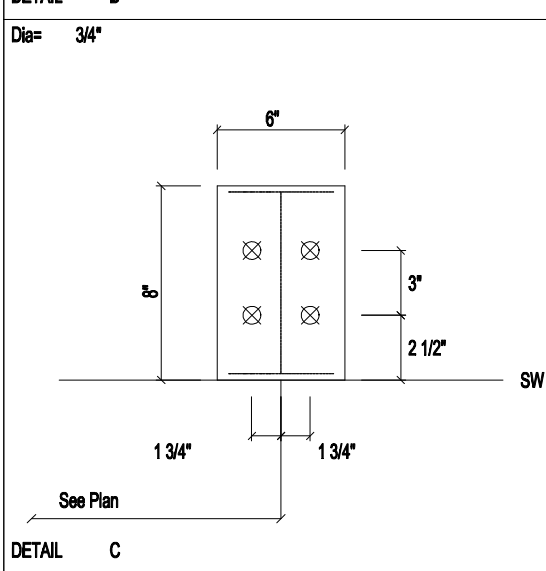
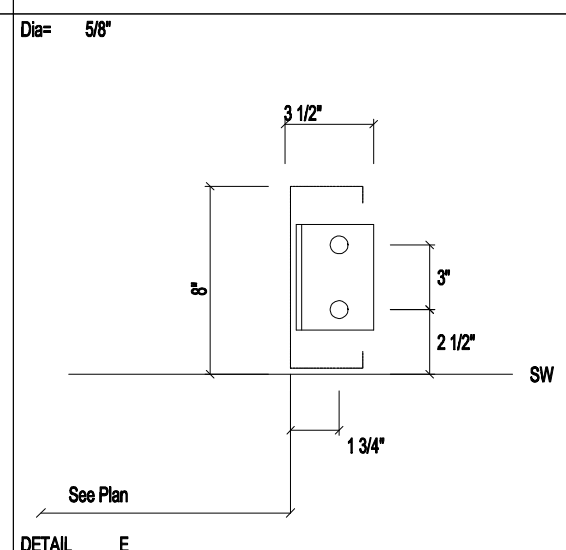
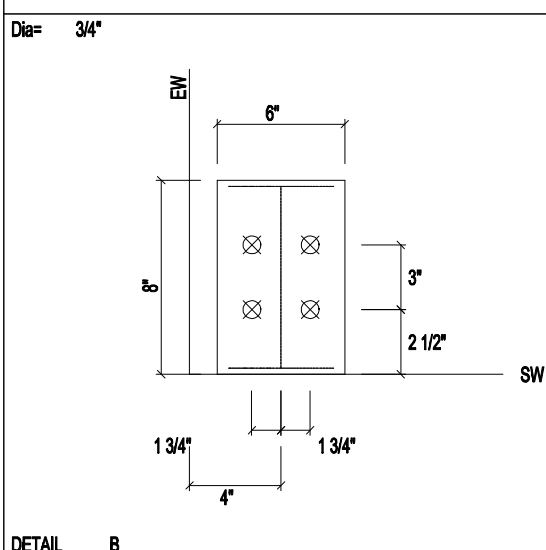
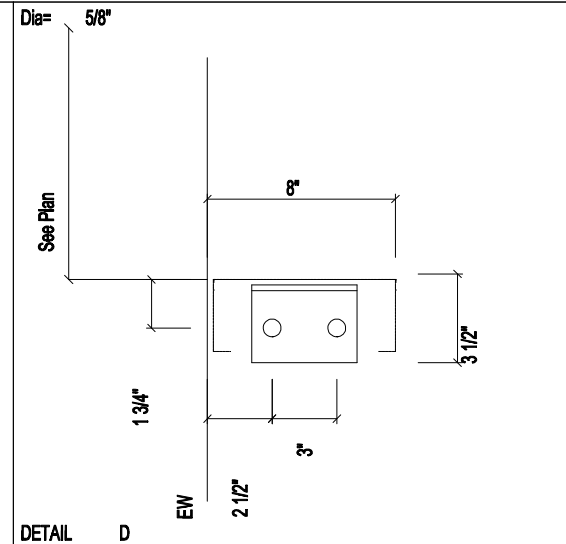
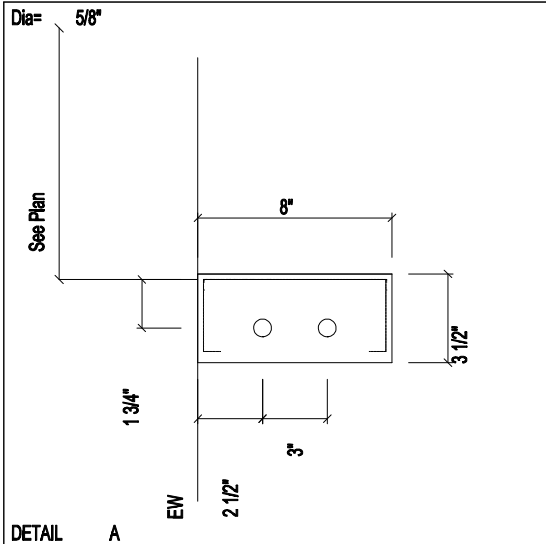


ANCHOR ROD PLAN

NOTE: All Base Plates @ 100'-0" (FINISH FLOOR)(UNLESS NOTED)



DESCRIPTION: Anchor Rod Plan							SHEET 2 of 15	
CUSTOMER: LarryLaird					PROJECT: LarryLaird			
LOCATION: FL 32038								
DRN. BY APX	CK'D BY SUN	DATE 7/18/21	SCALE N.T.S.	REV. 00	QUOTATION NO. 21-875	SHEET NO. OF		



DESCRIPTION: ANCHOR BOLT DETAILS						SHEET 3 of 15	
CUSTOMER: LarryLaird				PROJECT: LarryLaird			
LOCATION: FL 32038							
DRN. BY	CK'D BY	DATE	SCALE	REV.	QUOTATION NO.	SHEET NO.	
APX	SUN	7/18/21	N.T.S.	00	21-875	OF	

NOTES FOR REACTIONS

- All loading conditions are examined and only maximum/minimum H or V and the corresponding H or V are reported.
- Positive reactions are as shown in the sketch. Foundation loads are in opposite directions.
- Bracing reactions are in the plane of the brace with the H pointing away from the braced bay. The vertical reaction is downward.
- Building reactions are based on the following building data:
 - Width (ft) = 30.0
 - Length (ft) = 60.0
 - Eave Height (ft) = 12.0/ 12.0
 - Roof Slope (rise/run) = 5.0/ 5.0
 - Dead Load (psf) = 2.0
 - Collateral Load (psf) = 1.0
 - Roof Live Load (psf) = 20.0
 - Frame Live Load
 - Min (psf) = 12.3
 - Max (psf) = 15.3
 - Wind Speed (mph) = 120.0
 - Wind Code = FBC 20 (IBC 18)
 - Exposure = B
 - Closed/Open = C
 - Importance Wind = 1.00
 - Importance Seismic = 1.00
 - Seismic Zone = B
 - Seismic Coeff (Fa/Sa) = 0.12

5. Loading conditions are:

- Dead+Collateral+Live
- Dead+Collateral+0.75Live+0.45Wind_Left1
- Dead+Collateral+0.75Live+0.45Wind_Right1
- Dead+Collateral+0.75Live+0.45Wind_Long1R
- Dead+Collateral+0.75Live+0.45Wind_Long2R
- 0.6Dead+0.6Wind_Left1
- 0.6Dead+0.6Wind_Right1
- 0.6Dead+0.6Wind_Left2
- 0.6Dead+0.6Wind_Right2
- 0.6Dead+0.6Wind_Long1L
- 0.6Dead+0.6Wind_Long2L
- 0.6Dead+0.6Wind_Right2+0.6Wind_Suction
- 0.6Dead+0.6Wind_Pressure+0.6Wind_Long2L
- 0.6Dead+0.6Wind_Right2+0.6Wind_Suction

ANCHOR BOLT SUMMARY

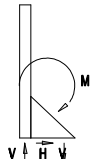
Qty	Locate	Dia (in)	Type	Total Len (in)	Bend Len (in)	Proj (in)
40	Jamb	5/8"	A307	8.00	3.00	3.00
4	Endwall	5/8"	A307	8.00	3.00	3.00
32	Frame	3/4"	A307	12.0	3.00	3.00
8	WindCol	3/4"				

BUILDING BRACING REACTIONS

Wall Loc	Col Line	Reactions(k)				Panel Shear (lb/ft)		Note
		Horz	Vert	Horz	Vert	Wind	Seis	
L_EW	1							(h)
F_SW	A	2						(g)
R_EW	4							(h)
B_SW	C	2						(g)

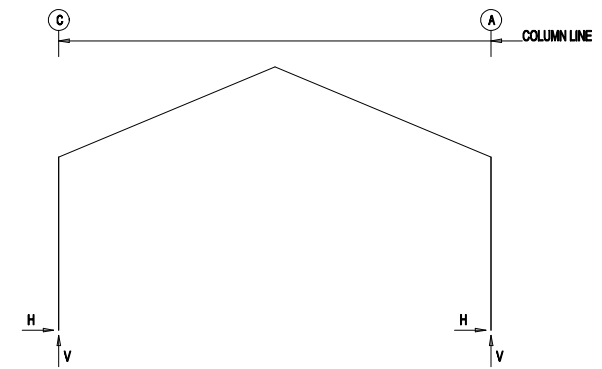
(g) Wind column at column line
(h) Rigid frame at endwall

WIND COLUMN REACTIONS



Wall Loc	Col Line	R/L	Load_ID	Horz (k)	Vert (k)	Moment (k-ft)	Anchor Qty	Dia	Width	Base Plate Length	Thick
F_SW	A	R	Wind	1.9	20.9	20.9	4	0.750	6.000	7.000	0.500
			Seismic	0.4	4.5	4.4					
B_SW	C	L	Wind	1.9	20.9	20.9	4	0.750	6.000	7.000	0.500
			Seismic	0.4	4.5	4.4					

FRAME LINES: 1234



RIGID FRAME: MAXIMUM REACTIONS, ANCHOR RODS, & BASE PLATES

Frm Line	Col Line	Load Id	Column Reactions(k)			Hmin H	V Vmin	Bolt Qty	Dia	Base Plate(n)			Grout (in)
			Hmax H	V Vmax	Load Id					Width	Length	Thick	
1	C	3	1.5	2.1	8	-1.7	-1.1	4	0.750	6.000	8.000	0.500	0.0
			1.3	4.0	6	-1.5	-2.0						
1	A	9	1.7	-1.1	2	-1.5	2.1	4	0.750	6.000	8.000	0.500	0.0
			1.3	4.0	7	1.5	-2.0						

RIGID FRAME: MAXIMUM REACTIONS, ANCHOR RODS, & BASE PLATES

Frm Line	Col Line	Load Id	Column Reactions(k)			Hmin H	V Vmin	Bolt Qty	Dia	Base Plate(n)			Grout (in)
			Hmax H	V Vmax	Load Id					Width	Length	Thick	
2*	C	3	2.1	2.7	8	-2.2	-1.2	4	0.750	6.000	8.000	0.500	0.0
			1.3	11.4	10	0.7	-14.9						
2*	A	9	2.2	-1.2	2	-2.1	2.7	4	0.750	6.000	8.000	0.500	0.0
			1.3	11.4	11	-0.7	-14.9						

2* Frame lines: 2 3

RIGID FRAME: MAXIMUM REACTIONS, ANCHOR RODS, & BASE PLATES

Frm Line	Col Line	Load Id	Column Reactions(k)			Hmin H	V Vmin	Bolt Qty	Dia	Base Plate(n)			Grout (in)
			Hmax H	V Vmax	Load Id					Width	Length	Thick	
4	C	3	1.8	2.1	8	-1.7	-1.2	4	0.750	6.000	8.000	0.500	0.0
			1.3	4.0	6	-1.8	-2.1						
4	A	9	1.7	-1.2	2	-1.8	2.1	4	0.750	6.000	8.000	0.500	0.0
			1.3	4.0	7	1.8	-2.1						

RIGID FRAME: BASIC COLUMN REACTIONS (k)

Frame Line	Column Line	Dead		Collateral		Live		Wind Left		Wind Right		Wind Left2	
		Horz	Vert	Horz	Vert	Horz	Vert	Horz	Vert	Horz	Vert	Horz	Vert
1	C	0.2	0.7	0.1	0.2	1.0	3.0	-2.7	-4.1	1.2	-2.4	-3.0	-2.5
1	A	-0.2	0.7	-0.1	0.2	-1.0	3.0	-1.2	-2.4	2.7	-4.1	-0.9	-0.9
2*	C	0.3	1.0	0.1	0.3	1.3	3.8	-3.8	-5.4	1.7	-3.3	-3.9	-3.0
2*	A	-0.3	1.0	-0.1	0.3	-1.3	3.8	-1.7	-3.3	3.8	-5.4	-1.3	-0.8
4	C	0.2	0.7	0.1	0.2	1.0	3.0	-2.9	-4.2	1.2	-2.5	-3.1	-2.7
4	A	-0.2	0.7	-0.1	0.2	-1.0	3.0	-1.2	-2.5	2.9	-4.2	-1.0	-1.0

ENDWALL COLUMN: BASIC COLUMN REACTIONS (k)

Frm Line	Col Line	Dead Vert	Wind Press		Wind Sust	
			Horz	Horz	Horz	Horz
1	B	0.1	-2.1	2.4		
4	B	0.1	-2.1	2.4		

ENDWALL COLUMN: MAXIMUM REACTIONS, ANCHOR BOLTS, & BASE PLATES

Frm Line	Col Line	Load Id	Column Reactions(k)			Hmin H	V Vmin	Bolt Qty	Dia	Base Plate(n)			Grout (in)
			Hmax H	V Vmax	Load Id					Width	Length	Thick	
1	B	12	1.4	0.1	13	-1.3	0.1	2	0.825	3.500	8.000	0.375	0.0
			1.4	0.1									
4	B	12	1.4	0.1	13	-1.3	0.1	2	0.825	3.500	8.000	0.375	0.0
			1.4	0.1									

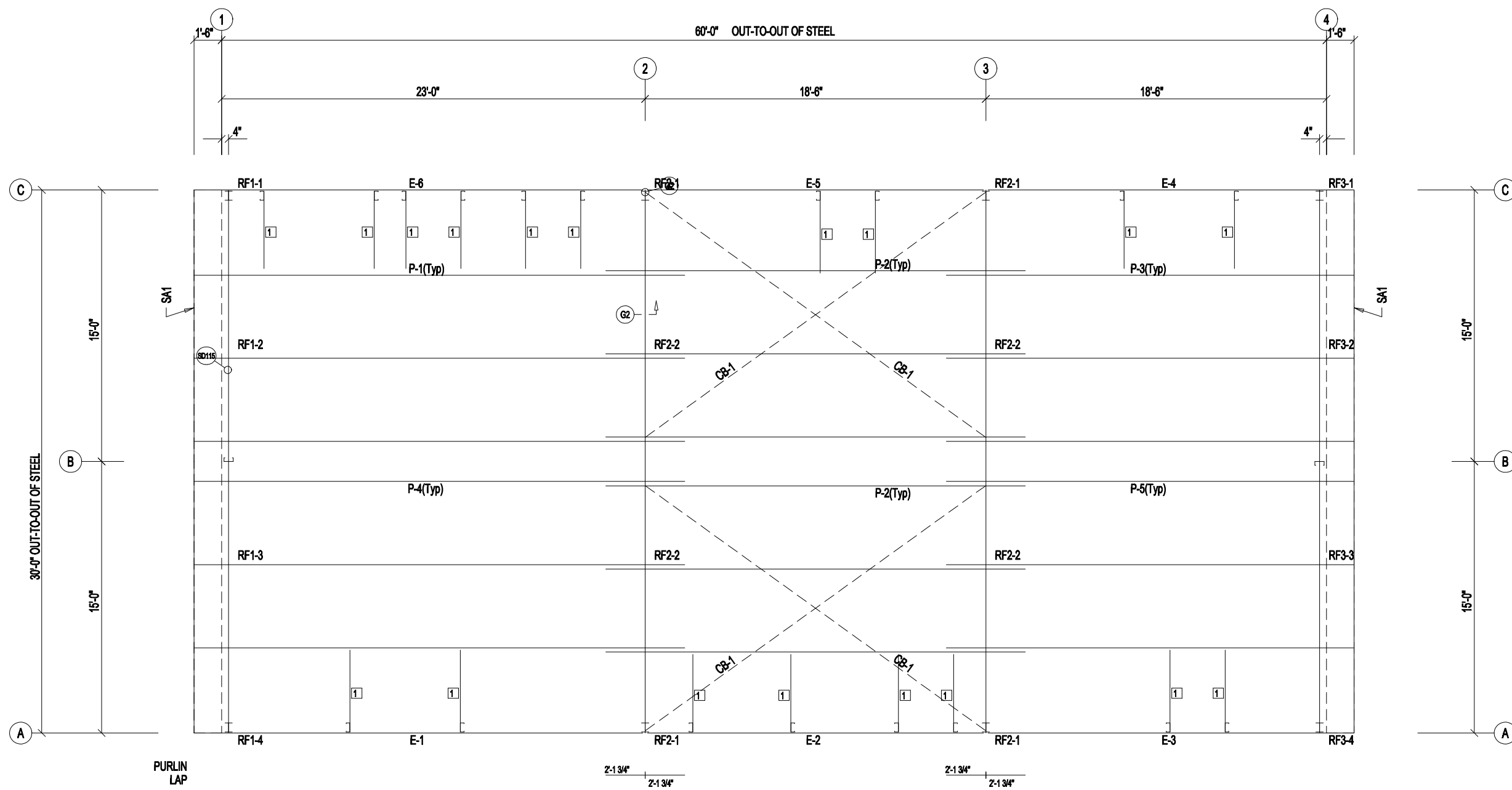


120 Connor St NE
Live Oak, FL 32064
Ph. 800-231-0026
www.apex-mbs.com

DESCRIPTION: Reactions		SHEET 4 of 15	
CUSTOMER: LarryLaird		PROJECT: LarryLaird	
LOCATION: FL 32038			
DRN. BY: APX	CK'D BY: SUN	DATE: 7/18/21	SCALE: N.T.S.
REV: 00	QUOTATION NO.: 21-875	SHEET NO.: OF	

MEMBER TABLE		
ROOF PLAN		
MARK	PART	LENGTH
P-1	8X25Z16	26'-7 1/2"
P-2	8X25Z14	22'-9 1/2"
P-3	8X25Z16	22'-1 1/2"
P-4	8X25Z16	26'-7 1/2"
P-5	8X25Z16	22'-1 1/2"
E-1	8.50E14	24'-5 1/2"
E-2	8.50E14	18'-5 1/2"
E-3	8.50E14	19'-11 1/2"
E-4	8.50E14	19'-11 1/2"
E-5	8.50E14	18'-5 1/2"
E-6	8.50E14	24'-5 1/2"
CB-1	CB0250	23'-6"

CONNECTION PLATES	
ROOF PLAN	
ID	MARK/PART
1	JB-1

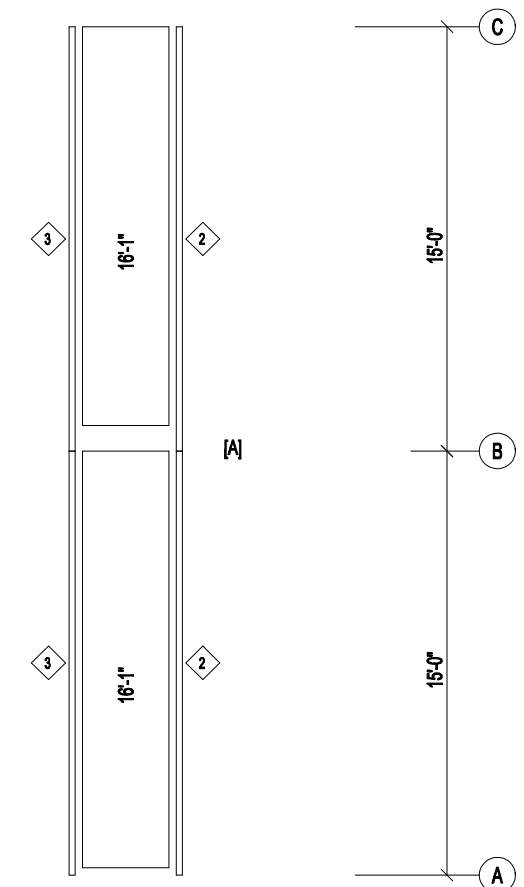
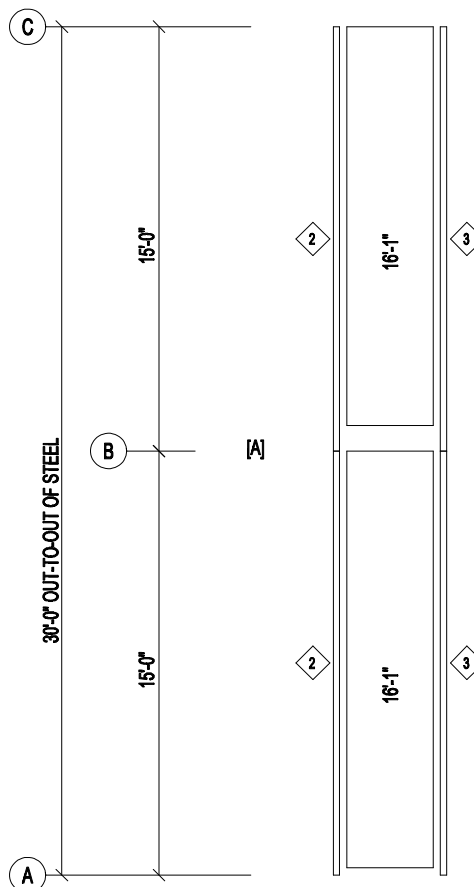
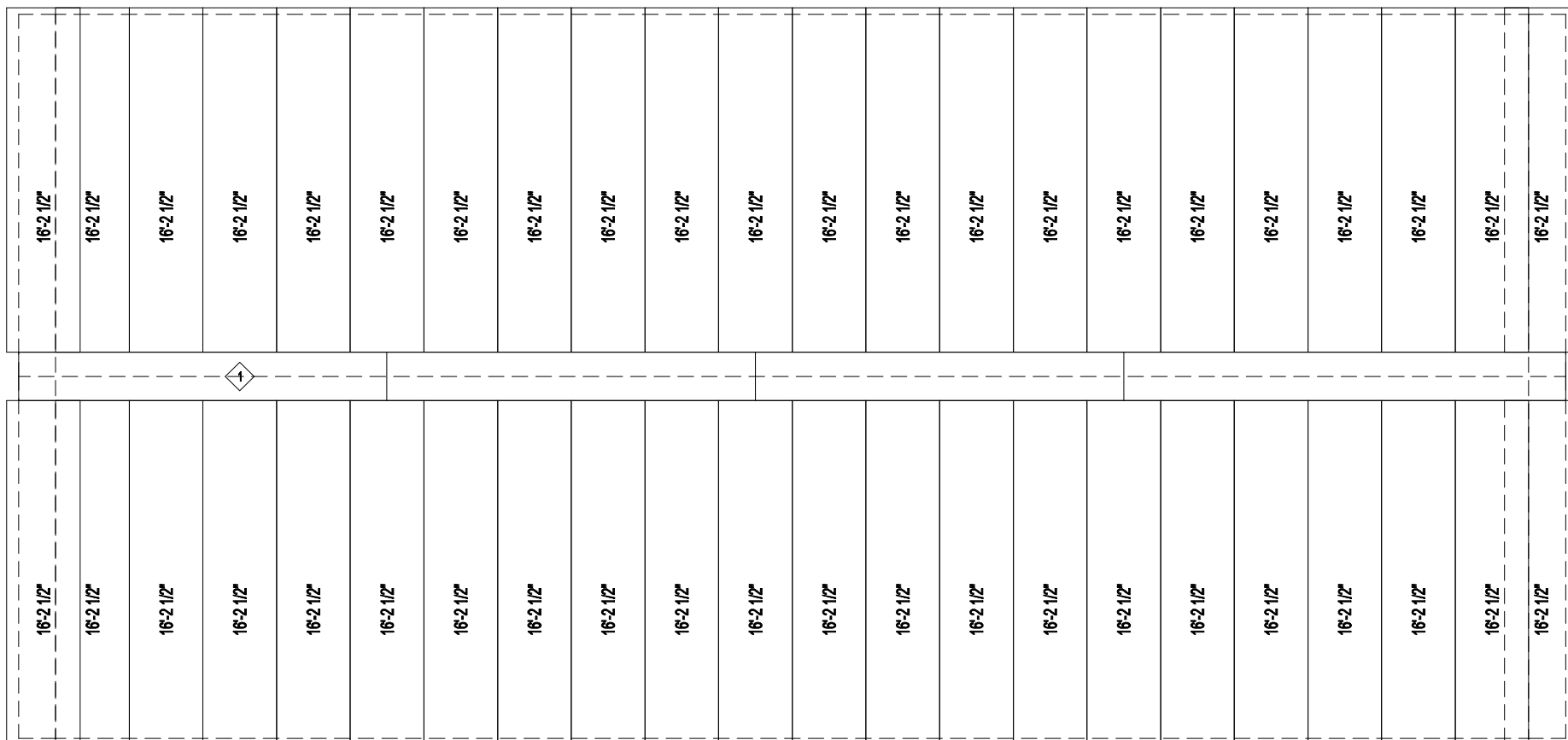
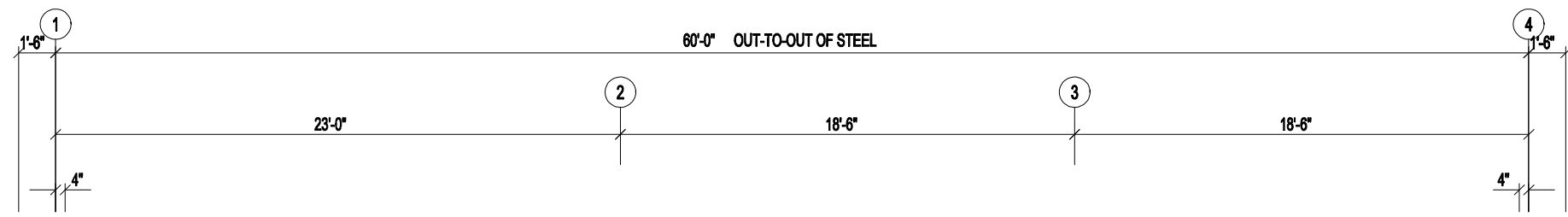


ROOF FRAMING PLAN



DESCRIPTION: ROOF FRAMING PLAN		SHEET 5 of 15	
CUSTOMER: LarryLaird		PROJECT: LarryLaird	
LOCATION: FL 32038			
DRN. BY APX	CK'D BY SUN	DATE 7/18/21	SCALE N.T.S.
REV. 00	QUOTATION NO. 21-875	SHEET NO. OF	

TRIM TABLE		
ROOF PLAN		
ID	PART	LENGTH
1	FL-56	15'-11"
2	FL-79	16'-3"
3	FL-50	16'-3"

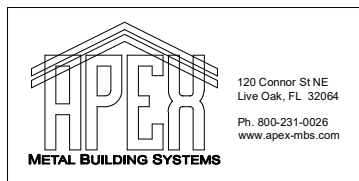


6" Panel Start

2'-0" Panel Start

ROOF SHEETING PLAN

PANELS: 26 Ga. PBR - Galvalume 26ga.
 [A] SOFFIT PANELS: 26 Ga. PBR - Need Std. Color

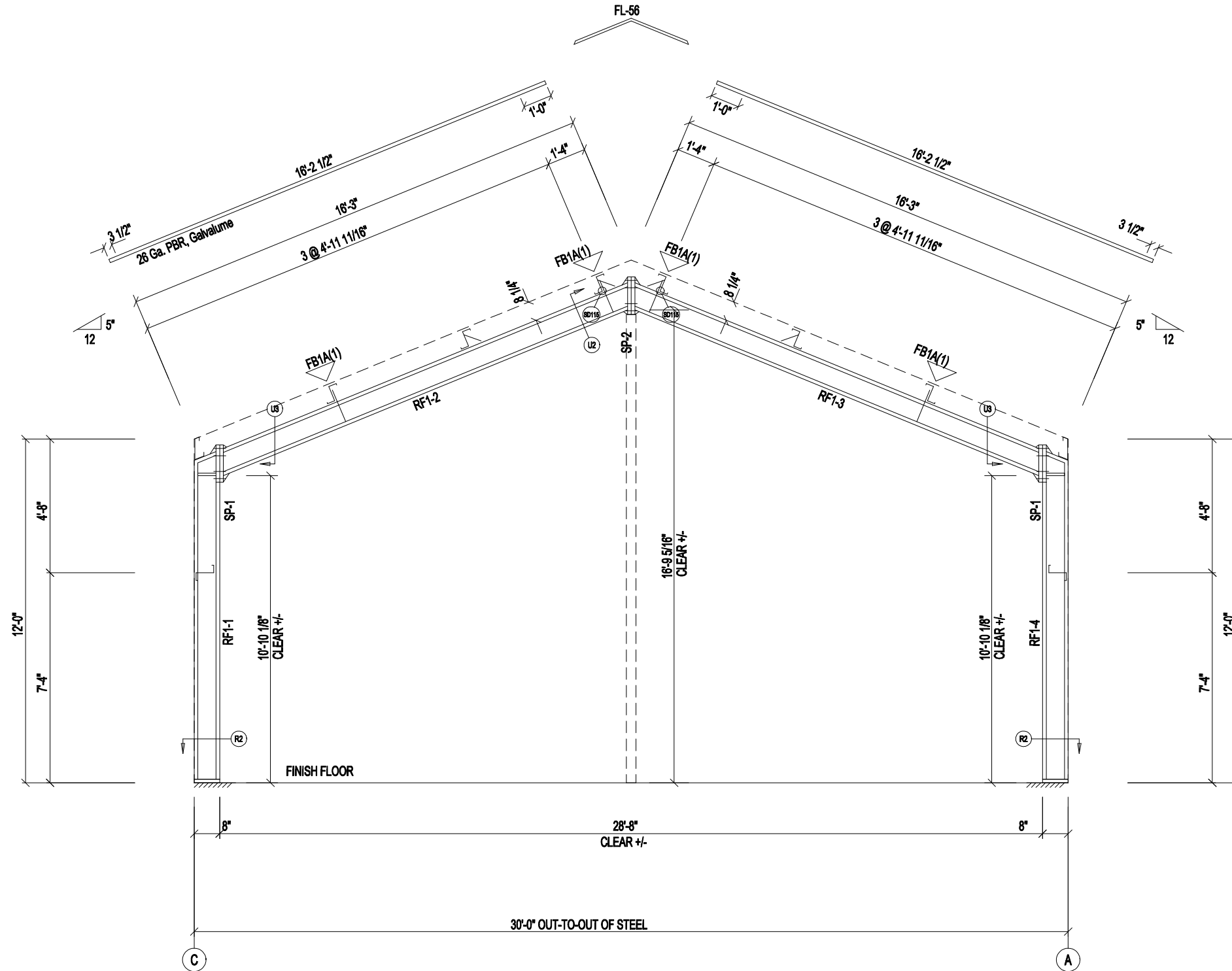


DESCRIPTION: ROOF FRAMING PLAN		SHEET 6 of 15	
CUSTOMER: LarryLaird		PROJECT: LarryLaird	
LOCATION: FL 32038			
DRN. BY APX	CK'D BY SUN	DATE 7/18/21	SCALE N.T.S.
REV. 00	QUOTATION NO. 21-875	SHEET NO. OF	

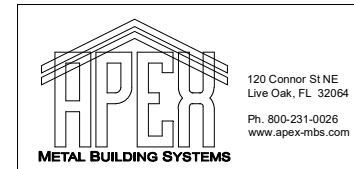
SPLICE PLATE & BOLT TABLE									
Mark	Qty		Int	Type	Dia	Length	Width	Thick	Length
	Top	Bot							
SP-1	4	4	0	A325	5/8"	2"	6"	3/8"	1'-3 7/8"
SP-2	4	4	0	A325	5/8"	1 3/4"	6"	3/8"	1'-3 13/16"

MEMBER SIZE TABLE		
MARK	MEMBER	LENGTH
RF1-1	W8X13	11'-3 1/16"
RF1-2	W8X10	15'-5 15/16"
RF1-3	W8X10	15'-5 15/16"
RF1-4	W8X13	11'-3 1/16"

FLANGE BRACES: FBxx (1 or 2)
 xx=length(in)
 (1) One Side; (2) Two Sides
 A - 2X2X14Ga



RIGID FRAME ELEVATION: FRAME LINE 1

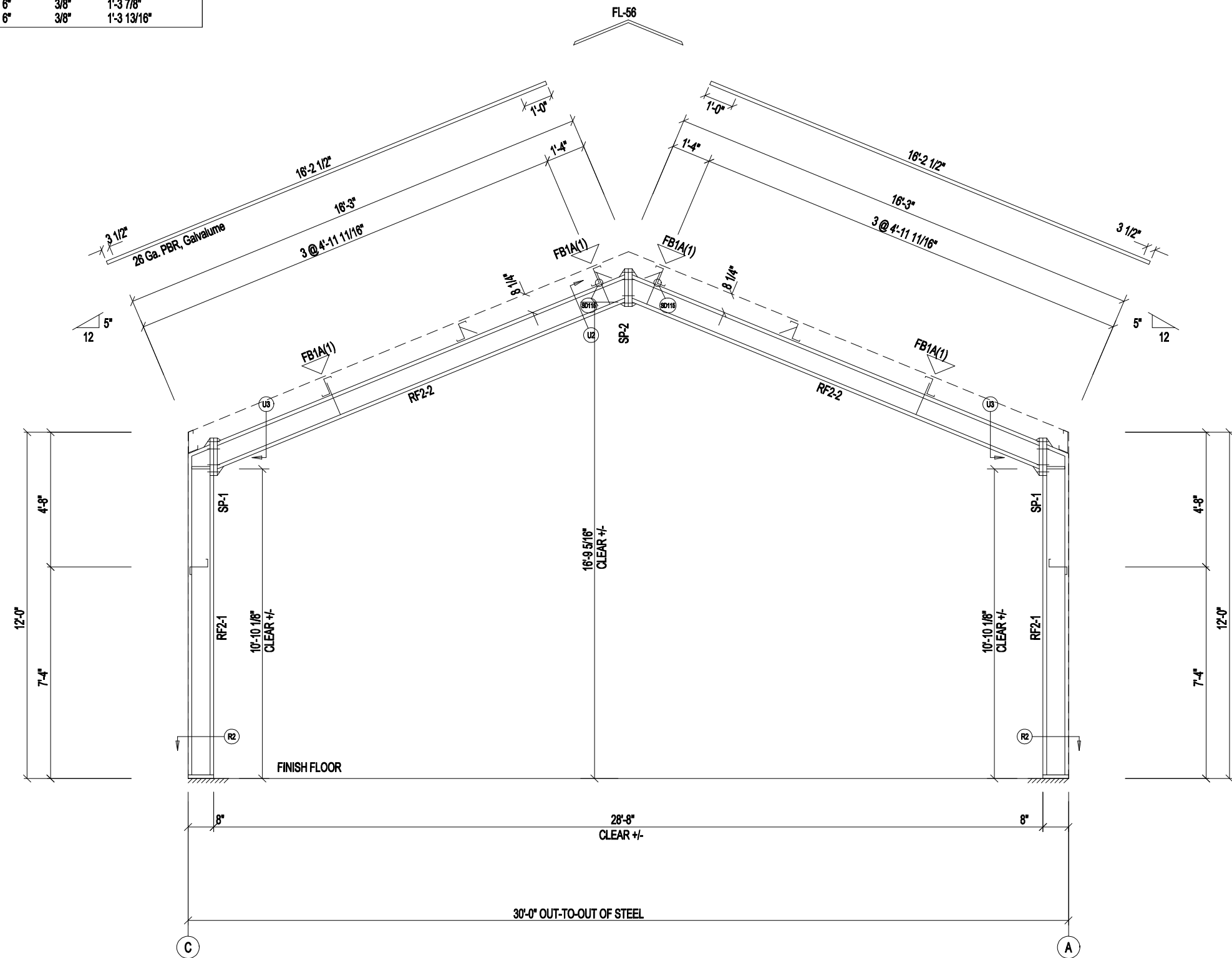


DESCRIPTION:		CROSS SECTION		SHEET 7 of 15	
CUSTOMER:		LarryLaird		PROJECT: LarryLaird	
LOCATION:		FL 32038			
DRN. BY	CK'D BY	DATE	SCALE	REV.	QUOTATION NO.
APX	SUN	7/18/21	N.T.S.	00	21-875
					SHEET NO. OF

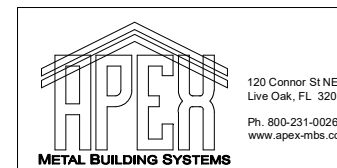
SPLICE PLATE & BOLT TABLE									
Mark	Qty Top	Qty Bot	Int	Type	Dia	Length	Width	Thick	Length
SP-1	4	4	0	A325	5/8"	2"	6"	3/8"	1'-3 7/8"
SP-2	4	4	0	A325	5/8"	1 3/4"	6"	3/8"	1'-3 13/16"

MEMBER SIZE TABLE		
MARK	MEMBER	LENGTH
RF2-1	W8X13	11'-3 1/16"
RF2-2	W8X10	15'-5 15/16"

FLANGE BRACES: FBxx (1 or 2)
 xx=length(in)
 (1) One Side; (2) Two Sides
 A - 2X2X14Ga



RIGID FRAME ELEVATION: FRAME LINE 2 3

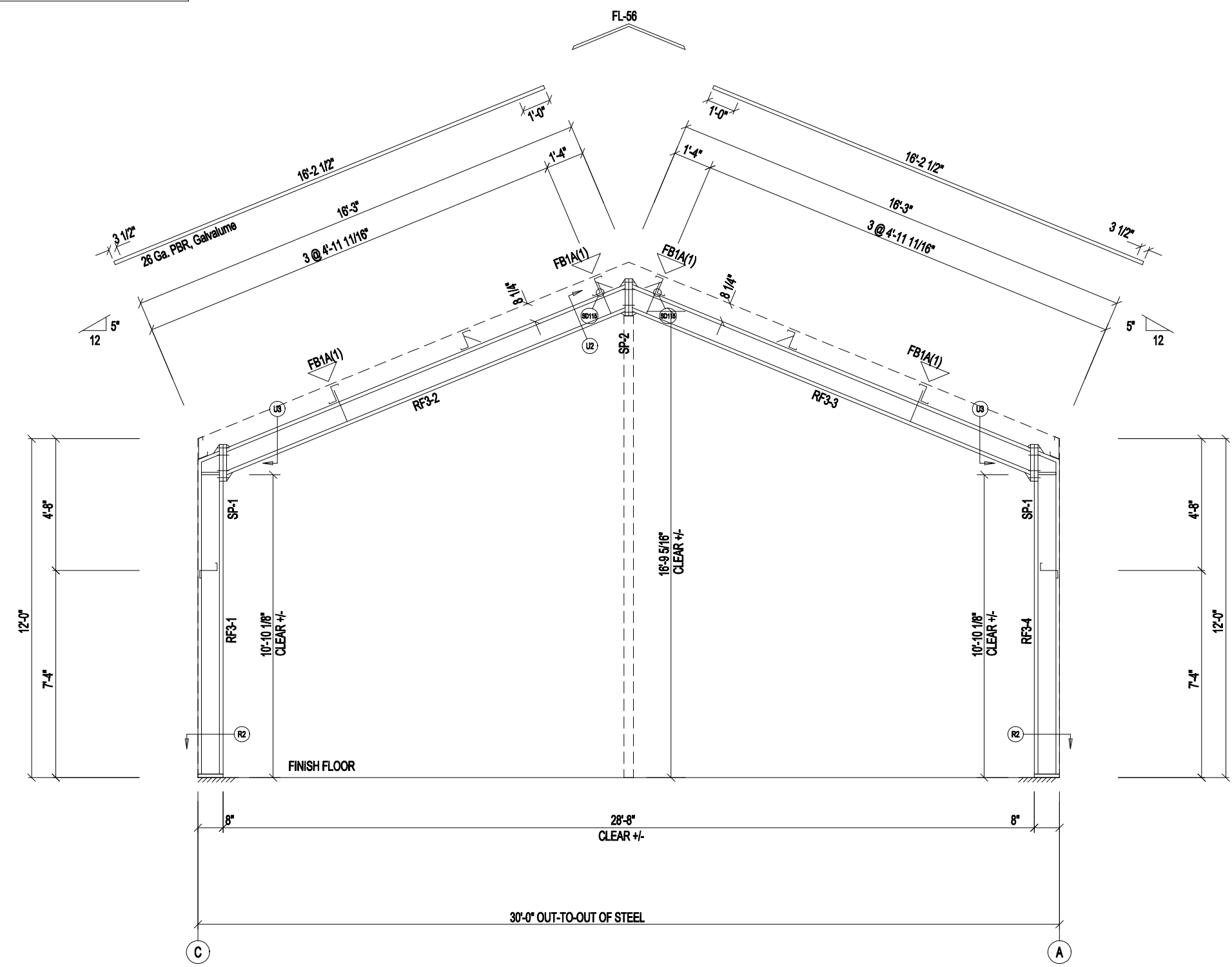


DESCRIPTION: CROSS SECTION		SHEET 8 of 15	
CUSTOMER: LarryLaird		PROJECT: LarryLaird	
LOCATION: FL 32038			
DRN. BY: APX	CK'D BY: SUN	DATE: 7/18/21	SCALE: N.T.S.
REV. 00	QUOTATION NO. 21-875	SHEET NO. OF	


SPLICE PLATE & BOLT TABLE									
Mark	Qty		Int	Type	Dia	Length	Width	Thick	Length
	Top	Bot							
SP-1	4	4	0	A325	5/8"	2"	6"	3/8"	1'-3 7/8"
SP-2	4	4	0	A325	5/8"	1 3/4"	6"	3/8"	1'-3 13/16"

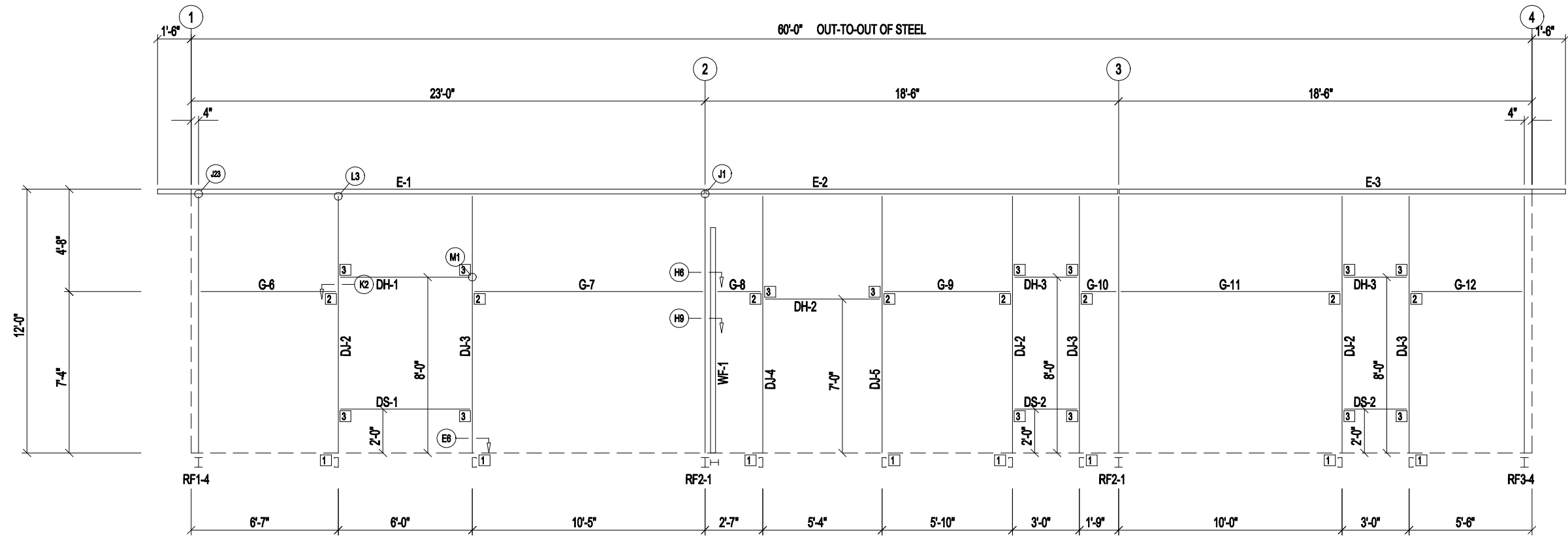
MEMBER SIZE TABLE		
MARK	MEMBER	LENGTH
RF3-1	W8X13	11'-3 1/16"
RF3-2	W8X10	15'-5 15/16"
RF3-3	W8X10	15'-5 15/16"
RF3-4	W8X13	11'-3 1/16"

FLANGE BRACES: FBxx (1 or 2)
 xx=length(in)
 (1) One Side; (2) Two Sides
 A - 2X2X14Ga

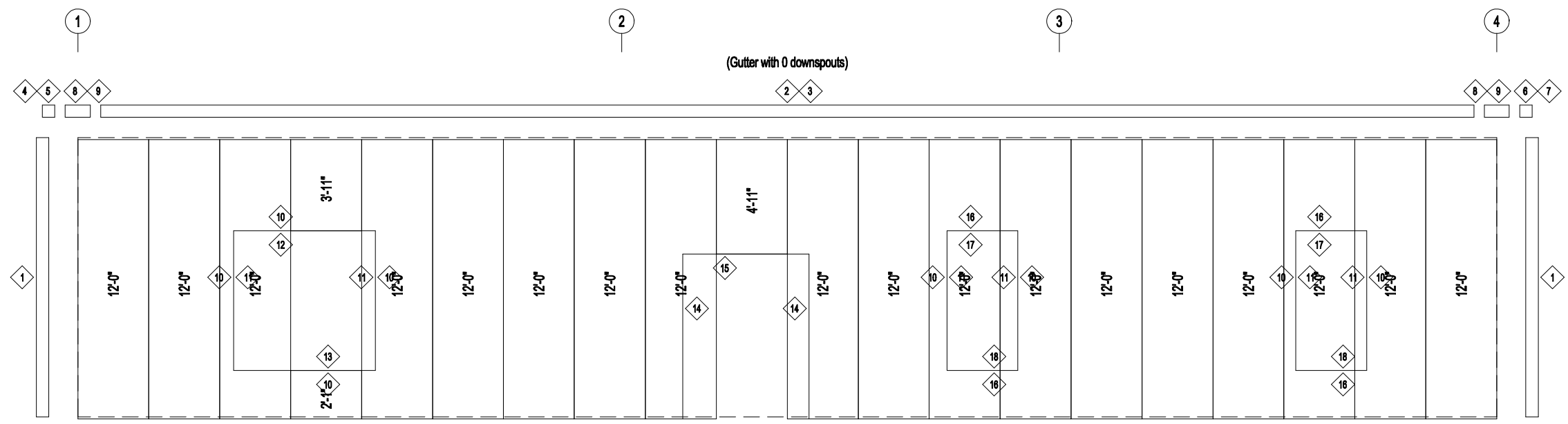


RIGID FRAME ELEVATION: FRAME LINE 4

 <p>120 Connor ST NE Live Oak, FL 32064 Ph. 800-231-0026 www.apex-mbs.com</p>	DESCRIPTION: CROSS SECTION		SHEET 9 of 15		
	CUSTOMER: LarryLaird		PROJECT: LarryLaird		
	LOCATION: FL 32038				
	DRN. BY APX	CK'D BY SUN	DATE 7/18/21	SCALE N.T.S.	REV. 00
					SHEET NO. OF



SIDEWALL FRAMING: FRAME LINE A



SIDEWALL SHEETING & TRIM: FRAME LINE A

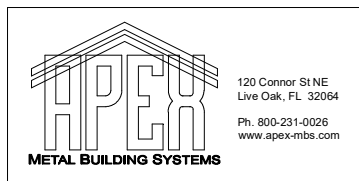
PANELS: 26 Ga. PBR - Need Std. Color

BOLT TABLE				
FRAME LINE A				
LOCATION	QUAN	TYPE	DIA	LENGTH
WF-1 - RF2-1	6	A325	5/8"	1 1/2"

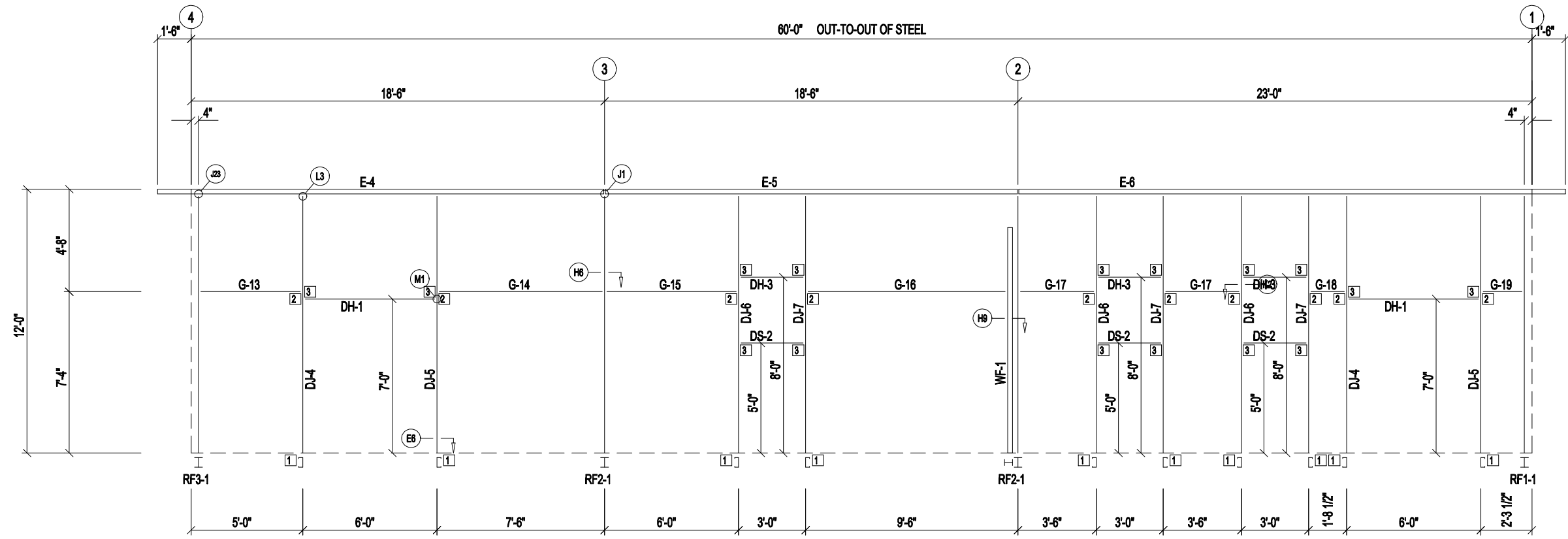
MEMBER TABLE		
FRAME LINE A		
MARK	PART	LENGTH
WF-1	W12X16	10'-6"
DJ-2	8X35C16	11'-6 3/8"
DJ-3	8X35C16	11'-6 3/8"
DJ-4	8X35C16	11'-6 3/8"
DJ-5	8X35C16	11'-6 3/8"
DH-1	8X25C16	5'-11 1/2"
DH-2	8X25C16	5'-3 1/2"
DH-3	8X25C16	2'-11 1/2"
DS-1	8X25C16	5'-11 1/2"
DS-2	8X25C16	2'-11 1/2"
E-1	8.50E14	24'-5 1/2"
E-2	8.50E14	18'-5 1/2"
E-3	8.50E14	19'-11 1/2"
G-6	8X25Z16	5'-7"
G-7	8X25Z16	9'-9"
G-8	8X25Z16	1'-2 3/4"
G-9	8X25Z16	5'-2"
G-10	8X25Z16	1'-1"
G-11	8X25Z16	9'-4"
G-12	8X25Z16	4'-6"

TRIM TABLE		
FRAME LINE A		
ID	PART	LENGTH
1	FL-10	12'-0"
2	FL-32	14'-6"
3	FL-31	15'-11"
4	FL-32L	11'-2"
5	FL-33L	8"
6	FL-32R	11'-2"
7	FL-33R	8"
8	FL-32	1'-6"
9	FL-80	1'-6"
10	FL-55	6'-4"
11	FL-48	6'-3"
12	FL-52	6'-4"
13	FL-53	6'-4"
14	FL-48	7'-3"
15	FL-52	5'-8"
16	FL-55	3'-4"
17	FL-52	3'-4"
18	FL-53	3'-4"

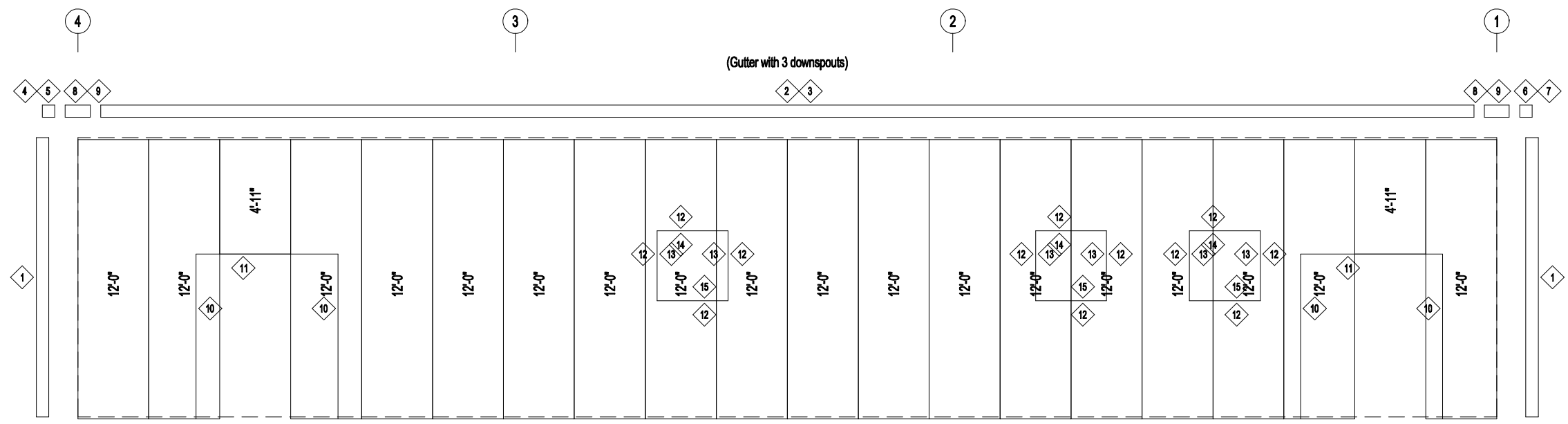
CONNECTION PLATES	
FRAME LINE A	
ID	MARK/PART
1	CL-104
2	CL-103
3	CL-100



DESCRIPTION: SIDEWALL ELEVATION		SHEET 10 of 15	
CUSTOMER: LarryLaird		PROJECT: LarryLaird	
LOCATION: FL 32038			
DRN. BY: APX	CKD BY: SUN	DATE: 7/18/21	SCALE: N.T.S.
REV: 00	QUOTATION NO.: 21-875	SHEET NO.: OF	



SIDEWALL FRAMING: FRAME LINE C



SIDEWALL SHEETING & TRIM: FRAME LINE C

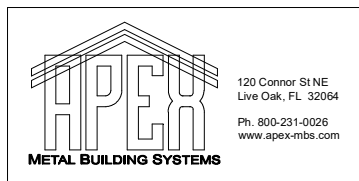
PANELS: 26 Ga. PBR - Need Std. Color

BOLT TABLE				
FRAME LINE C				
LOCATION	QUAN	TYPE	DIA	LENGTH
WF-1 - RF2-1	6	A325	5/8"	1 1/2"

MEMBER TABLE		
FRAME LINE C		
MARK	PART	LENGTH
WF-1	W12X16	10'-6"
DJ-4	8X35C16	11'-6 3/8"
DJ-5	8X35C16	11'-6 3/8"
DJ-6	8X35C16	11'-6 3/8"
DJ-7	8X35C16	11'-6 3/8"
DH-1	8X25C16	5'-11 1/2"
DH-3	8X25C16	2'-11 1/2"
DS-2	8X25C16	2'-11 1/2"
E-4	8.50E14	19'-11 1/2"
E-5	8.50E14	18'-5 1/2"
E-6	8.50E14	24'-5 1/2"
G-13	8X25Z16	4'-0"
G-14	8X25Z16	6'-10"
G-15	8X25Z16	5'-4"
G-16	8X25Z16	8'-1 3/4"
G-17	8X25Z16	2'-10"
G-18	8X25Z16	1'-0 1/2"
G-19	8X25Z16	1'-3 1/2"

TRIM TABLE		
FRAME LINE C		
ID	PART	LENGTH
1	FL-10	12'-0"
2	FL-31	14'-6"
3	FL-31	15'-11"
4	FL-32L	11'-2"
5	FL-33L	8"
6	FL-32R	11'-2"
7	FL-33R	8"
8	FL-32	1'-6"
9	FL-80	1'-6"
10	FL-48	7'-3"
11	FL-52	6'-4"
12	FL-55	3'-4"
13	FL-48	3'-3"
14	FL-52	3'-4"
15	FL-53	3'-4"

CONNECTION PLATES	
FRAME LINE C	
ID	MARK/PART
1	CL-104
2	CL-103
3	CL-100



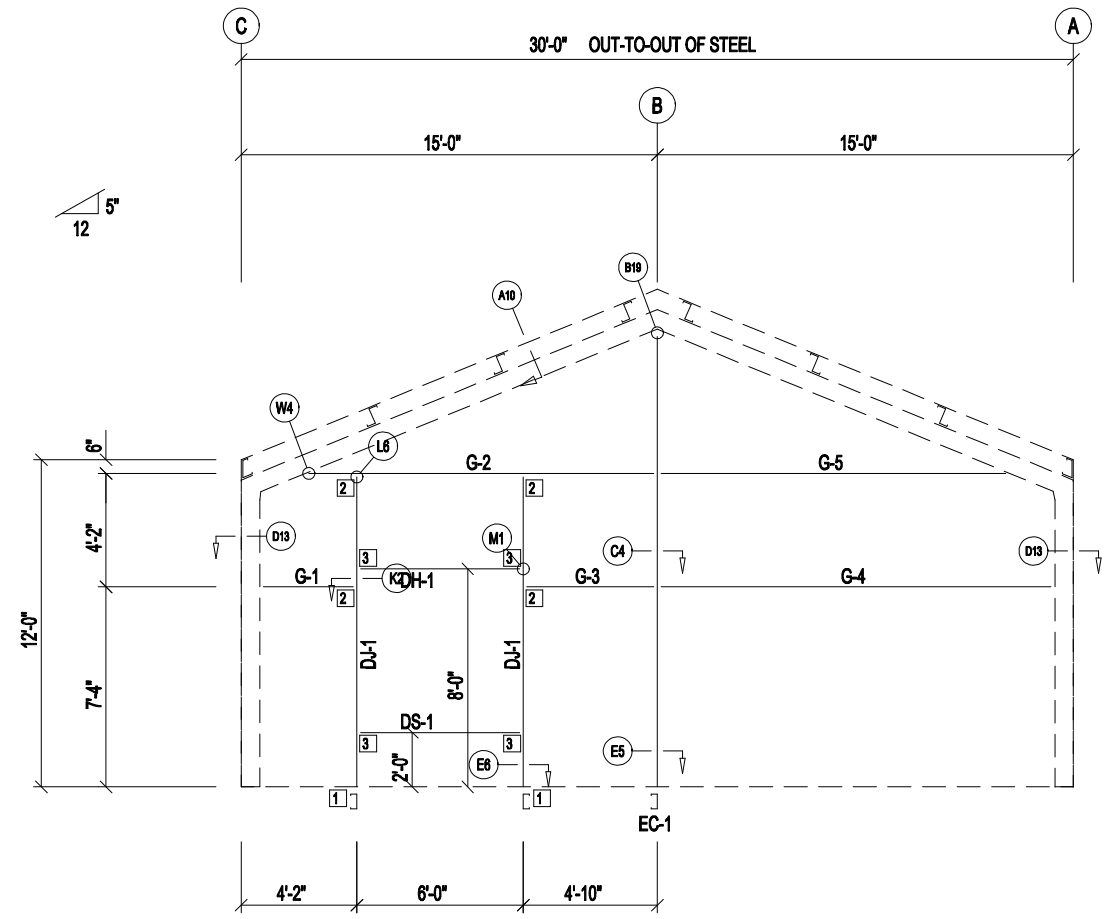
DESCRIPTION: SIDEWALL ELEVATION		SHEET 11 of 15	
CUSTOMER: LarryLaird		PROJECT: LarryLaird	
LOCATION: FL 32038			
DRN. BY: APX	CK'D BY: SUN	DATE: 7/18/21	SCALE: N.T.S.
REV: 00	QUOTATION NO.: 21-875	SHEET NO.: OF	

BOLT TABLE FRAME LINE 1				
LOCATION	QUAN	TYPE	DIA	LENGTH
Columns/Raf	2	A325	5/8"	1 1/4"

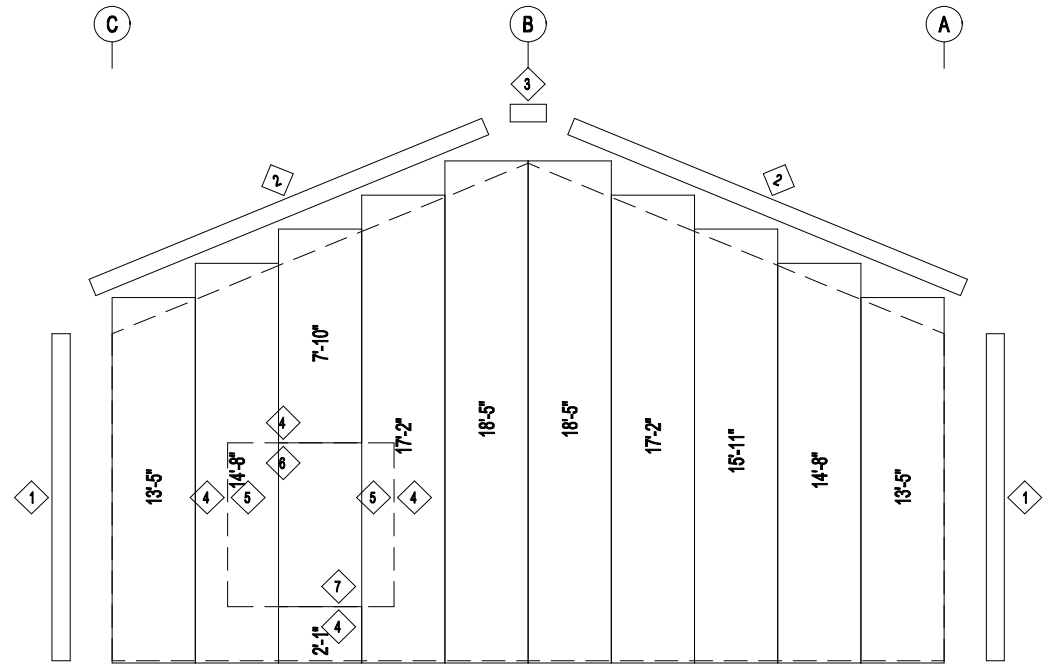
MEMBER TABLE FRAME LINE 1		
MARK	PART	LENGTH
EC-1	8X35C12	16'-5 13/16"
DJ-1	8X35C16	11'-1 3/4"
DH-1	8X25C16	5'-11 1/2"
DS-1	8X25C16	5'-11 1/2"
G-1	8X25Z16	3'-1 3/4"
G-2	8X25Z16	12'-4 1/16"
G-3	8X25Z16	4'-2"
G-4	8X25Z16	13'-11 3/4"
G-5	8X25Z16	12'-4 1/16"

TRIM TABLE FRAME LINE 1		
ID	PART	LENGTH
1	FL-10	12'-0"
2	FL-50	16'-3"
3	FL-88	1'-6"
4	FL-55	6'-4"
5	FL-48	6'-3"
6	FL-52	6'-4"
7	FL-53	6'-4"

CONNECTION PLATES FRAME LINE 1		
ID	MARK/PART	
1	CL-104	
2	CL-103	
3	CL-100	



ENDWALL FRAMING: FRAME LINE 1

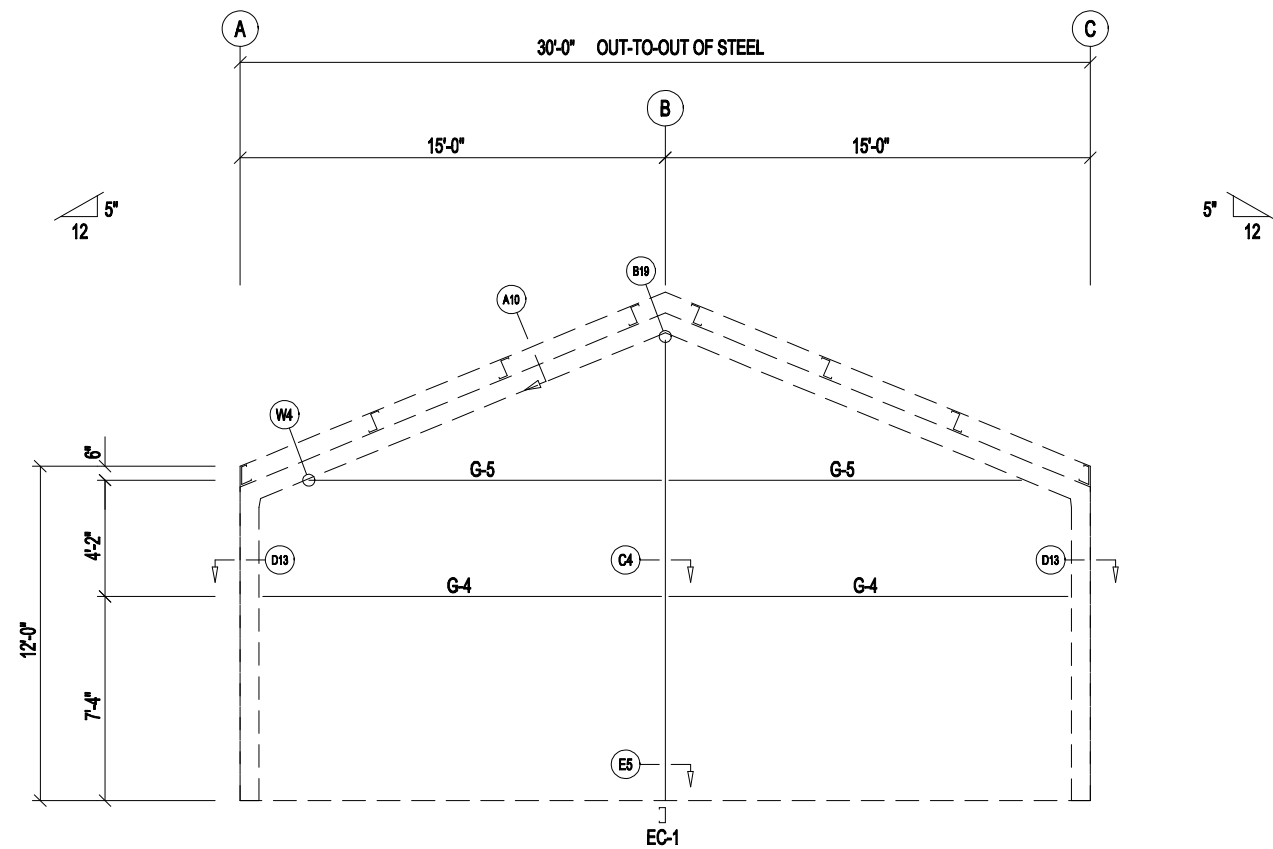


ENDWALL SHEETING & TRIM: FRAME LINE 1

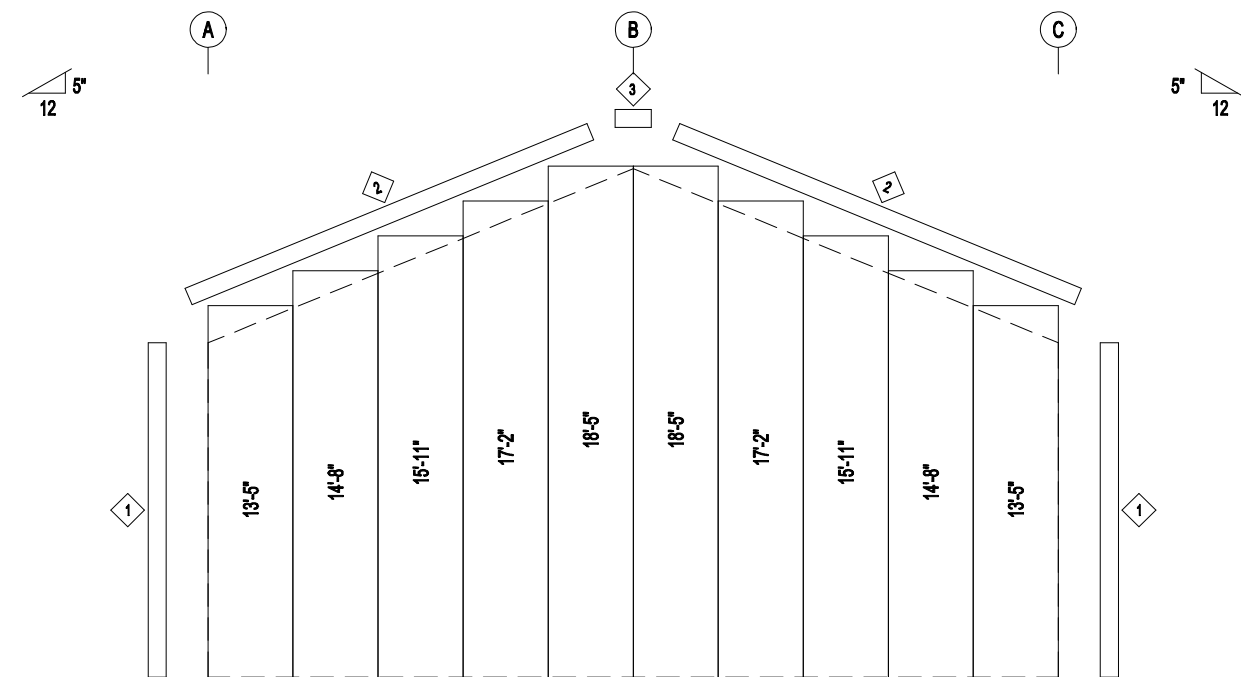
PANELS: 26 Ga. PBR - Need Std. Color



DESCRIPTION: ENDWALL ELEVATION		SHEET 12 of 15	
CUSTOMER: LarryLaird		PROJECT: LarryLaird	
LOCATION: FL 32038			
DRN. BY APX	CK'D BY SUN	DATE 7/18/21	SCALE N.T.S.
REV. 00	QUOTATION NO. 21-875	SHEET NO. OF	



ENDWALL FRAMING: FRAME LINE 4



ENDWALL SHEETING & TRIM: FRAME LINE 4

PANELS: 28 Ga. PBR - Need Std. Color

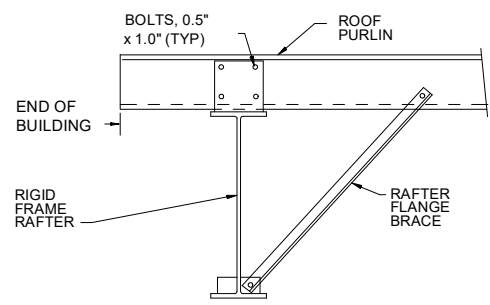
BOLT TABLE				
FRAME LINE 4				
LOCATION	QUAN	TYPE	DIA	LENGTH
Columns/Raf	2	A325	5/8"	1 1/4"

MEMBER TABLE		
FRAME LINE 4		
MARK	PART	LENGTH
EC-1	8X35C12	16'-5 13/16"
G-4	8X25Z16	13'-11 3/4"
G-5	8X25Z16	12'-4 1/16"

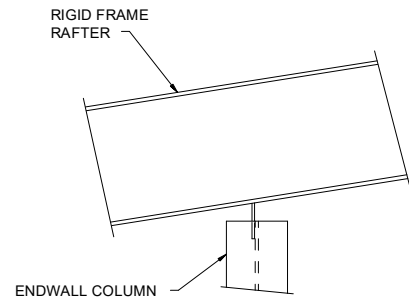
TRIM TABLE		
FRAME LINE 4		
ID	PART	LENGTH
1	FL-10	12'-0"
2	FL-50	18'-3"
3	FL-88	1'-6"



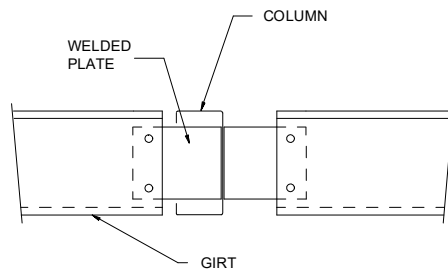
DESCRIPTION: ENDWALL ELEVATION		SHEET 13 of 15	
CUSTOMER: LarryLaird		PROJECT: LarryLaird	
LOCATION: FL 32038			
DRN. BY: APX	CK'D BY: SUN	DATE: 7/18/21	SCALE: N.T.S.
REV. 00	QUOTATION NO. 21-875	SHEET NO. OF	



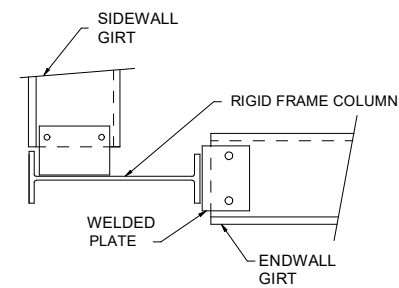
A10 ROOF PURLIN TO EXPANDABLE ENDWALL RIGID FRAME



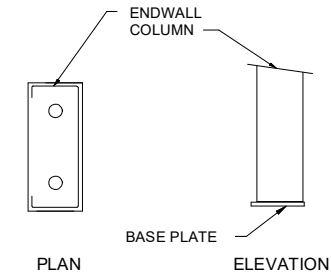
B19 COLUMN TO RIGID FRAME RAFTER



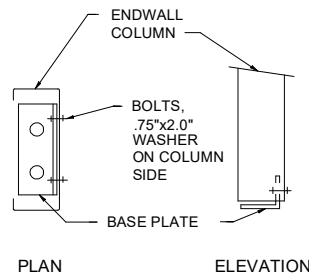
C4 GIRT TO COLUMN



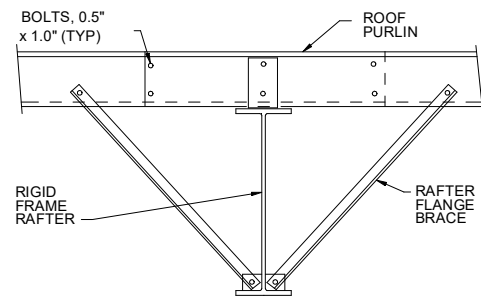
D13 CORNER COLUMN TO WALL GIRT



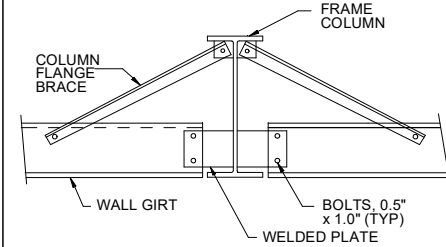
E5 BASE PLATE TO ENDWALL COLUMN OR DOOR JAMB



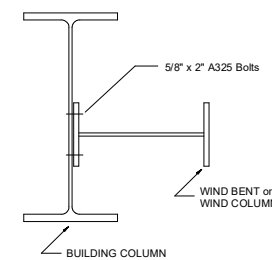
E6 BASE PLATE FOR ENDWALL COLUMN OR DOOR JAMB



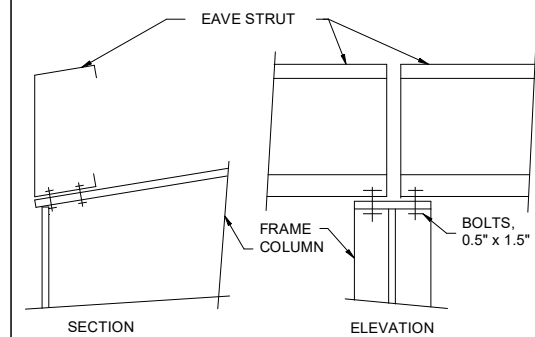
G2 ROOF PURLIN TO INTERIOR FRAME RAFTER



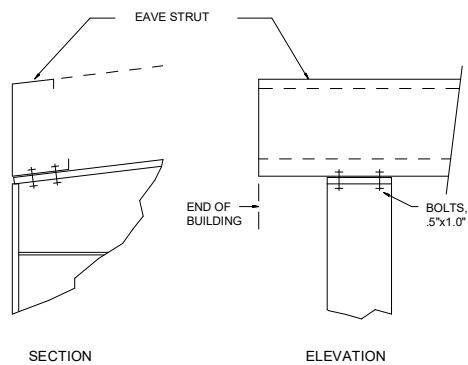
H6 WALL GIRT TO FRAME COLUMN



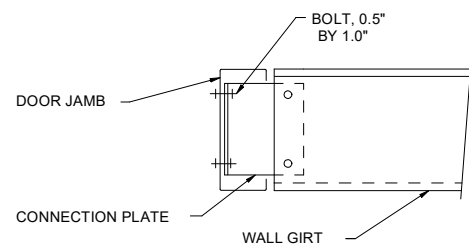
H9 WIND BENT OR WIND COLUMN TO BUILDING COLUMN



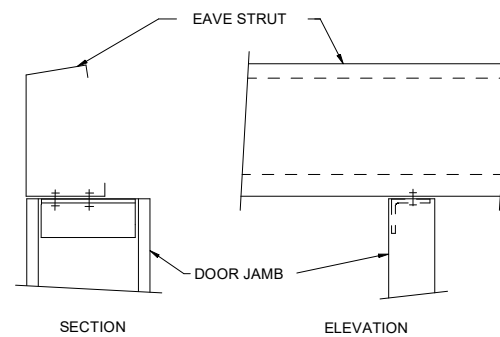
J1 EAVE STRUT TO RIGID FRAME



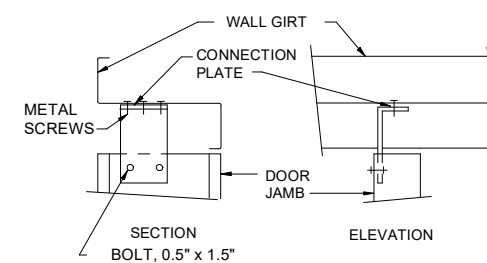
J23 EAVE STRUT TO RIGID FRAME



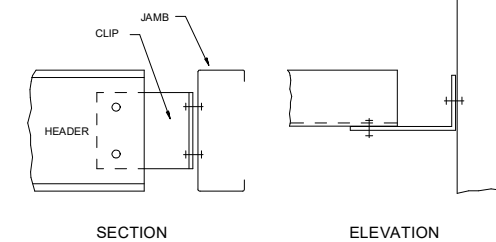
K2 WALL GIRT TO DOOR JAMB



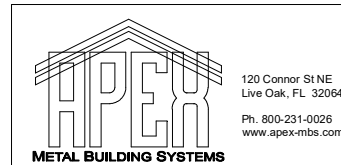
L3 DOOR JAMB TO EAVE STRUT



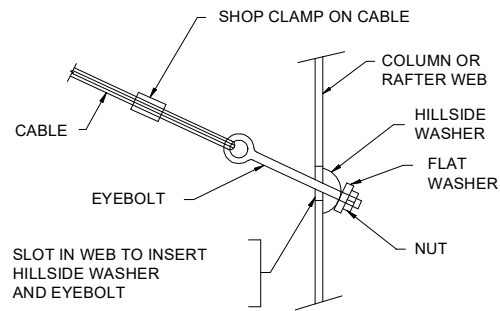
L6 DOOR JAMB TO WALL GIRT



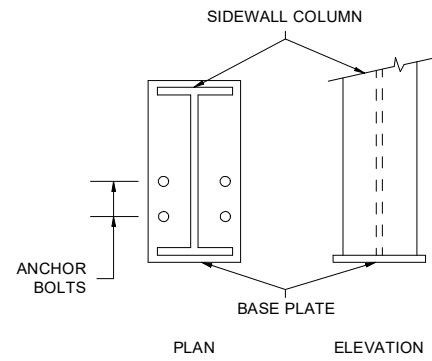
M1 HEADER TO C JAMB



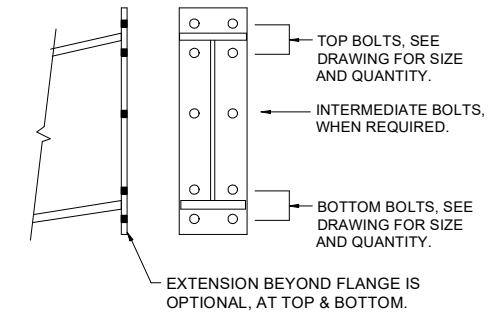
DESCRIPTION: DETAIL DRAWINGS		SHEET 14 of 15	
CUSTOMER: LarryLaird		PROJECT: LarryLaird	
LOCATION: FL 32038			
DRN. BY: APX	CK'D BY: SUN	DATE: 7/18/21	SCALE: N.T.S.
REV: 00	QUOTATION NO.: 21-875	SHEET NO. OF	



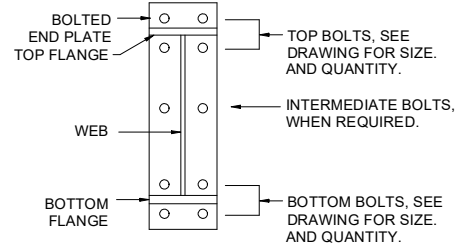
Q2 DIAGONAL CABLE, EYEBOLT END



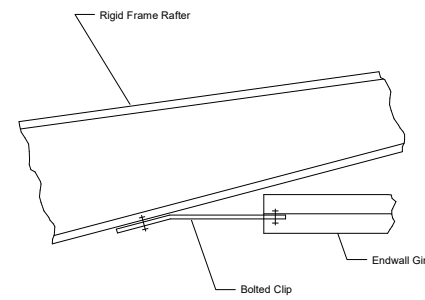
R2 ANCHOR BOLTS AT SIDEWALL COLUMN



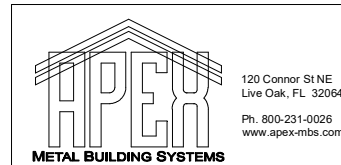
U2 BOLTED END PLATE CONNECTION AT BUILDING PEAK



U3 BOLTS FOR RAFTER TO COLUMN CONNECTION



W4 SECTION OF ENDWALL GIRT TO RAFTER



DESCRIPTION: DETAIL DRAWINGS						SHEET 15 of 15	
CUSTOMER: LarryLaird				PROJECT: LarryLaird			
LOCATION: FL 32038							
DRN. BY	CK'D BY	DATE	SCALE	REV.	QUOTATION NO.	SHEET NO.	
APX	SUN	7/18/21	N.T.S.	00	21-875	OF	