

REVISIONS		
CHG. BY	APPR. BY	DATE

*William J. Blankenship*  
5/4/05

*Office copy*

FLORIDA  
2001 Florida Building Code, w/2003 amendments  
2002 National Electrical Code  
2004 Florida Fire Prevention Code; however, compliance with this code is the responsibility of the local code official having jurisdiction.

WILLIAM J. BLANKENSHIP, PE  
5810 CRISPIN STREET, APT. 2C  
ROANOKE, VIRGINIA, 24019  
PE LICENSE: STATE OF  
FLORIDA # 56396

**VFP, INC**

CORPORATE OFFICE  
2840 Electric Road Suite A-201  
Roanoke VA 24018-3544  
(540)977-0500 (540)977-5555

MANUFACTURING FACILITY  
4954 Industrial Park  
Duffield, Virginia 24244  
(276)431-4000 (276)431-4220

Except as may otherwise be provided by contract, all drawings and concepts are the sole property of VFP, Inc. and shall not be reproduced in whole or part without the written permission of VFP, Inc.

DRAWN BY	DATE
I. WILLIAMSON	4/25/05
CHECKED BY	DATE
<i>W. J. Blankenship</i>	5/3/05
APPROVED BY	DATE
<i>W. J. Blankenship</i>	5/3/05

DRAWING NOT TO SCALE

SIZE	CAGE NO.	MODEL	REV.
B	53223		-

FIG. SCALE 1/4" = 1'-0"

3058



CODE SHEET  
FOR  
FLORIDA  
DRAWING NO. 277045  
SHEET 01 of 1

NOTES

- REFER TO DWG. 101116 FOR GENERAL NOTES.
- FABRICATE TO THE MIRROR IMAGE OF THIS DRAWING WHERE REQUIRED BY ECN, SALES ORDER, OR NEW DRAWING RELEASE.
- REFER TO SHEET NOTES ON SPECIFIC PAGES FOR ADDITIONAL INSTRUCTIONS.
- REFER TO DRAWING # 277025 ON SPECIFIC SETUP INSTRUCTIONS.
- REFER TO DRAWING # 473141 FOR HVAC WIRING DIAGRAM.
- REFER TO SHEET "C1", DRAWING # 277045, FOR STATE CODE INFORMATION.

PP1 UTILITY 200A, 120/240VAC, 1Ø/3W, 60Hz, M.BKR

LOAD	VOLT AMPERES (WATTS)		BREAKER		WIRE		BREAKER		WIRE VOLT AMPERES (WATTS)		LOAD	
	A	B	P	TRIP	A	B	A	B	A	B		
ACH1	3840		8	2	35		2		8	3840	ACH2	
RECEPTACLES	900	3840	12	1	20		6		12	872	INTERIOR LIGHTS	
RECEPTACLES	1080		12	1	20		8		12	100	EXTERIOR LIGHT	
SPARE				1	20		10		12	120	BLOCK HEATER	
SPARE				1	20		12		12	460	BATTERY CHARGER	
BLANK							13				SPARE	
							15				SPARE	
							17				BLANK	
							19					
							21					
							23					
							25					
							27					
							29					
							30					
VOLT AMPERES PER PHASE		4740	4920							4832	4400	VOLT AMPERES PER PHASE
TOTAL VOLT AMPERES												TOTAL VOLT AMPERES
TOTAL AMPS PER PHASE												TOTAL AMPS PER PHASE
AMPS x125%												AMPS x125%
												x 110% for MAIN

*William J. Blanksenship*  
5/4/05

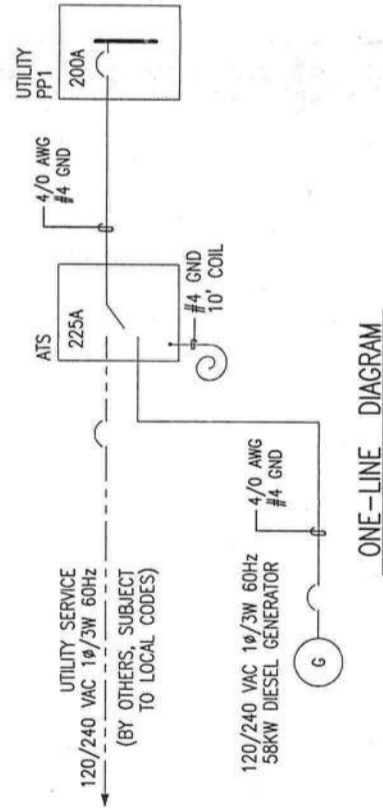
Code Classification	Ocny	Constr
SBC - SBCCI	S2	V1 (u)
NBC - BOCA 2002-08C (OH)	S2	VB
UBC - ICBO	S2	V (n)
IBC - INTERNATIONAL BUILDING CODE 2003	S2	VB
NATIONAL ELECTRICAL CODE - 2002		

ALL CODES LATEST APPROVED EDITION

Allowable Stresses

uniform floor load	125 psf
uniform roof live load	100 psf
wind load (including sliding and overturning moments)	120 mph
seismic	GROUP 1, CAT. "D"
estimated shipping weight	53,000 lbs.
fire rating wall	2 hour
recommended foundation	272011-120 24

- Field Notes:
- Allowable stresses calculated using the recommended foundation\* while anchored with VFP--designated hardware.
  - Uniform floor loading while being lifted is 125 psf.
  - Locate wedge anchor after building is located on foundation to correctly align with installed anchor plate. Refer to detail E, sheet 6.



EXTERIOR LTG. CKT.

WILLIAM J. BLANKENSHIP, PE  
5810 CRISPIN STREET, APT. 2G  
ROANOKE, VIRGINIA 24019  
PE LICENSE: STATE OF FLORIDA # 56396

VFP, INC.

CORPORATE OFFICE  
2840 Electric Road Suite A-201  
Roanoke, Virginia 24018-3544  
(540)977-0500 (540)977-5555 fax

MANUFACTURING FACILITY  
4954 Industrial Park  
Duffield, Virginia 24244  
(276)431-4000 (276)431-4220 fax

Except as may otherwise be provided by contract, these drawings and concepts are the sole property of VFP, Inc. and shall not be reproduced in whole or part without the written permission of VFP, Inc.

DRAWN BY	T. WILLIAMSON	DATE	4/13/05
CHECKED BY		DATE	
APPROVED BY		DATE RELEASED	
DO NOT SCALE DRAWING			
SIZE	B	CASE NO.	53223
SCALE	1/4"=1'0"	MODEL	3058
TITLE	10'0" x 24'0" x 9'2" CONCRETE SHELTER PANEL SCHED & ONE LINE		
DRAWING NO.	203058		
SHEET	1 of 7		

RELEASED  
MAY 4 2005  
VFP, INC.  
ENGINEERING

REV.	STATUS	REVISION	SHEET
S3	S2	S1	7
			6
			5
			4
			3
			2
			1

REVISIONS			
CHG. BY	APPR. BY	DATE	REV

WILLIAM J. BLANKENSHIP, PE  
 5810 CRISPIN STREET, APT. 2G  
 ROANOKE, VIRGINIA 24019  
 PE LICENSE: STATE OF  
 FLORIDA # 56396

**VFP, INC.**

CORPORATE OFFICE  
 2840 Electric Road Suite A-201  
 Roanoke, Virginia 24018-3544  
 (540)977-0500 (540)977-5555 fax

MANUFACTURING FACILITY  
 4954 Industrial Park  
 Duffield, Virginia 24244  
 (276)431-4000 (276)431-4220 fax

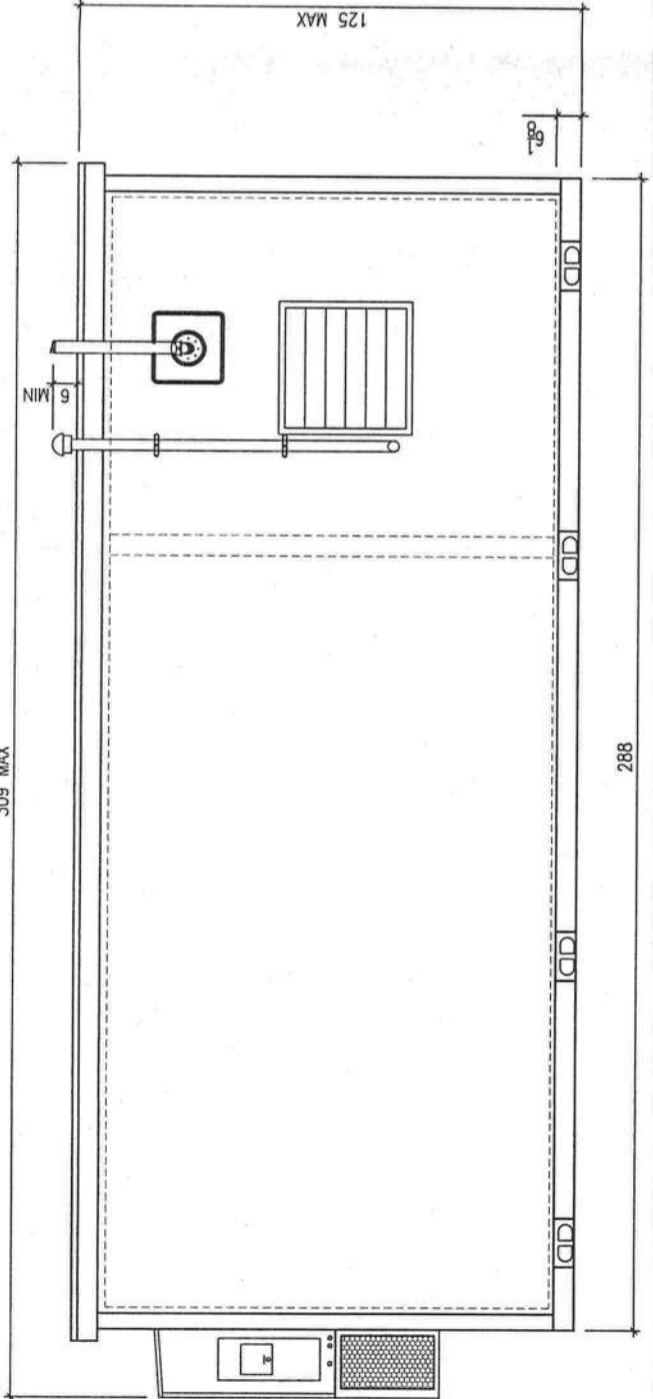
Except as may otherwise be provided by contract, these drawings and concepts are the sole property of VFP, Inc. They are issued in strict confidence, and shall not be reproduced, copied, made or part without the written permission of VFP, Inc.

DRAWN BY	T.T. WILLIAMSON	DATE	4/25/05
CHECKED BY	M. Sturge	DATE	4/27/05
APPROVED BY	W.J. Blankenship	DATE RELEASED	5/13/05

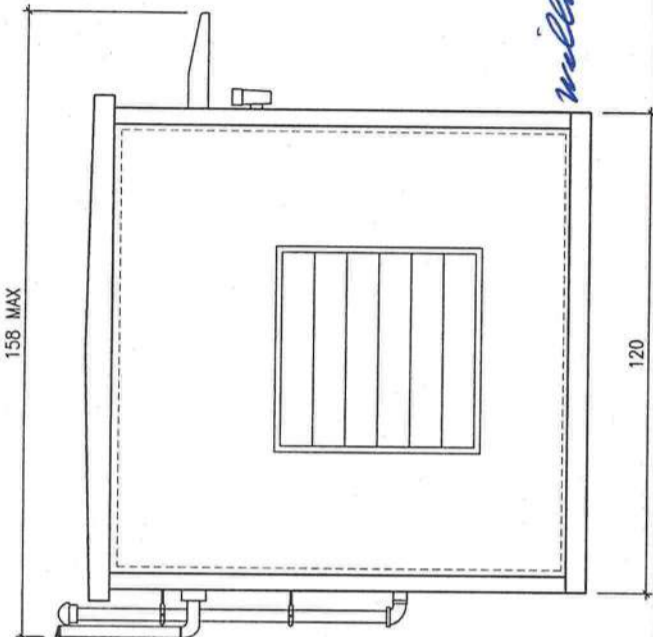
SIZE	B	CAGE NO	53223	REV	-
PLOT SCALE	1/4"=1'0"	MODEL	3058		

TITLE  
 10'0" x 24'0" x 9'2"  
 CONCRETE SHELTER  
 EXTERIOR ELEVATIONS

DRAWING NO.	203058
SHEET	2 of 7

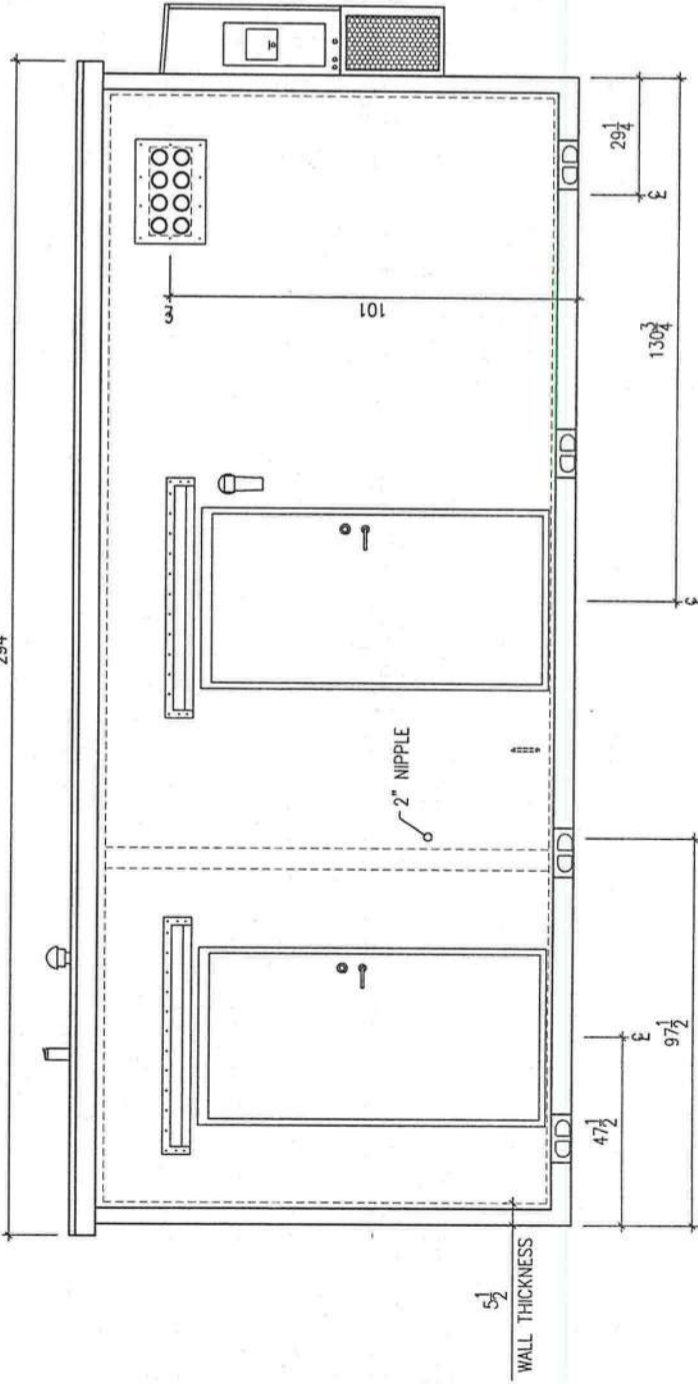


REAR WALL ELEVATION C

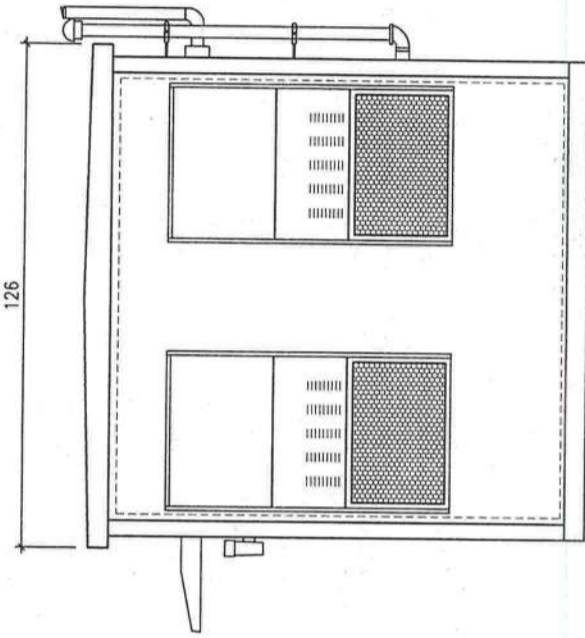


LEFT WALL ELEVATION B

EXTERIOR ELEVATIONS  
 DIMENSIONS SHOWN ARE FOR REFERENCE ONLY



FRONT WALL ELEVATION A



RIGHT WALL ELEVATION D

RELEASED  
 MAY 4 2005  
 VFP, INC.  
 ENGINEERING

*William J. Blankenship*  
 5/14/05

*William J. Blankenship*  
5/24/05

QTY	U/M	PART NO.	DESCRIPTION	ITEM
1	EA	155017-001	PHOTO CELL, 120V, 50/60Hz	PC 56
1	EA	195003-101	LIGHT FIXT. EXT. INCAN, 100W W/GLOBE	LE 55
1	EA	155012-075	LAMP, INCAN, 75W	54
2	EA	12LSM110-2	LIGHT, EMER, 2-HEAD, 120/277V	LM1.2 51
1	EA	TEC20	THERMOSTAT, 2STG, HT/CL	T1 47
1	EA	350011-200	CONDULET, 2" LB, W/CVR AND GASKET	43
2	EA	350055-001	COVER, 2-1/8, SGL, 1.4D	42
8	EA	350003-001	COVER, 4SQ, BLK	41
2	EA	350004-001	COVER, 2-1/8, BLK	40
2	EA	350005-001	COVER, SGL SW	39
1	EA	350039-001	COVER, 4SQ, DBL SW	38
11	EA	350006-001	COVER, 4SQ, 1-DUP	37
24	EA	350001-002	BOX, 4SQ X 2-1/8D, 1/2 - 3/4 KO	36
4	EA	350002-001	BOX, 2-1/8	35
2	EA	355097-520	RECEPT, 20A, 125V, SGL	32
11	EA	355096-520	RECEPT, 20A, 125V, DUP, BRWN	31
5	EA	350075-060	NIPPLE, RGD, 1/2 X 8	27
4	EA	350075-050	NIPPLE, RGD, 1/2 X CHASE	26
2	EA	350075-080	NIPPLE, RGD, 3/4 X 8	25
2	EA	350075-208	NIPPLE, RGD, 2 X 8	24
2	EA	360014-048	FLASHING, 145", 48" ALUM.	20
2	EA	DAH-28X8TB	GRILLE, AC, SUPPLY, 28 X 8	19
2	EA	DARR-28X14TB	GRILLE, AC, RETURN, 28 X 14	18
1	EA	WA372-A05XWXXXJ	A/C, WM, 36000/5, 230V, W/RELAYS	ACH2 17
1	EA	WL372-A05XWXXXJ	A/C, WML, 36000/5, 230V, W/RELAYS	ACH1 16
1	EA	101844-1	ATS, 2P/3W, N1, 120/240	ATS 8
2	EA	GBK14	GROUND BAR KIT	5
10	EA	BR120	CKT BKR, 1/20A	4
2	EA	BR235	CKT BKR, 2/35A	3
1	EA	BR3040B200	LOAD CENTER, 200A, 1P/3W, 30S, MB	PP1 1

QTY	U/M	PART NO.	DESCRIPTION	ITEM
2	EA	301471-056	AWNING, 56"	128
2	EA	360014-052	FLASHING, 145", 52" ALUM.	127
2	EA	ARH01SR26D	LEVERSET, PASSAGE, ARROW	126
2	EA	200NA-48	DOOR SWEEP, 48"	125
6	EA	165411-001	HINGE, SS, 4"	124
4	EA	178133-001	GASKET, DOOR, BRONZE	123
2	EA	165047-007	LOCK, DBOLT, BEST	122
2	EA	1C7A1626	CORE, BEST, 7 PIN, A-TYPE	121
2	EA	365020-001	DOOR CLOSURE, HYD	120
4	EA	DJDFD-2-32D	STRIKE PLATE	119
2	EA	365357-1824	DOOR, GALV, UNIV, #23, 42 X 84	118
2	EA	265192-001	THRESHOLD, 1/8 X 1-3/4	117
2	EA	165193-001	HOLDER	116
2	EA	US24R40932D	DOOR BUMPER, SS, CONCAVE	115
1	EA	265039-030	DUCT, FLEX, GEN. EXHAUST	107
1	EA	301466-001	EXT. THIMBLE ASSY, 1750, 1/4" H	106
1	EA	101843-1	GENSET, 58KW, 1P/3W, DSL, N1, 60HZ, 120/240	105
1	EA	360007-008	MFLFRMG, 12GA, 1-5/8 X 10 (CUT 6 @ 15")	102
10	FT	360010-150	THREADED ROD, 1/2 (CUT 4 @ 30")	101
24	EA	360007-750	SLICK NUT, 1/2"	100
1	EA	350248-012	CABLE TRAY, 12W X 116.5	CL 96
1	EA	350248-012	CABLE TRAY, 12W X 116.5 (CUT @ 84")	CL 95
1	EA	350248-012	CABLE TRAY, 12W X 116.5 (CUT @ 72")	CL 94
1	EA	350248-012	CABLE TRAY, 12W X 116.5 (CUT @ 50.5")	CL 93
12	EA	301021-129	CABLE TRAY HANGER, 21"	CLH 92
2	ST	350063-001	CABLE TRAY CORNERS	91
8	EA	165335-101	RUBBER CAPS, 1-1/2 X 3/8	90
1	ST	350062-001	CABLE TRAY, SPLICER	89
1	EA	365032-120	FILTER, E-Z, 30 X 30	86
1	EA	165334-030	LOUVER, 30", W/P	LV1 85
1	EA	438-SDF-48	LOUVER, 48", W/P	LV2 84
1	EA	378027-424	WAVEGUIDE, 4", 2 X 4	WGE 80
1	EA	301462-001	GROUND PL ASSY, 1/4 X 4 X 24	GB 77
4	EA	355098-120	SWITCH, 1P, 20A	S1,2,3,4 71
3	EA	155015-001	SUPPRESSOR, BALLAST, 4LT	70
14	EA	155011-044	LAMP, FLOUR, 34W, C WHITE	69
7	EA	155016-004	FIXTURE, FLOUR, 2 TUBE, 4 FT	LF 68

CHG. BY	APPR. BY	DATE	REV

**WILLIAM J. BLANKENSHIP, PE**  
5810 CRISPIN STREET, APT. 2G  
ROANOKE, VIRGINIA 24019  
PE LICENSE: STATE OF FLORIDA # 56396

**VFP, INC.**  
CORPORATE OFFICE  
2840 Electric Road Suite A-201  
Roanoke, Virginia 24018-3544  
(540)977-0500 (540)977-5555 fax

MANUFACTURING FACILITY  
4954 Industrial Park  
Duffield, Virginia 24244  
(276)431-4000 (276)431-4220 fax

Except as may otherwise be provided by contract, these drawings and concepts are the sole property of VFP, Inc. They are issued in strict confidence, and shall not be reproduced in whole or part without the written permission of VFP, Inc.

DRAWN BY: T.T. WILLIAMSON  
CHECKED BY: *[Signature]* DATE: 4/25/05  
APPROVED BY: *[Signature]* DATE RELEASED: 4/27/05  
DATE RELEASED: 5/13/05  
DRAWING NOT TO SCALE

SIZE: B PAGE NO: 53223 REV: -  
PLOT SCALE: 1/4"=1'-0" MODEL: 3058  
TITLE: 10'0" x 24'0" x 9'2" CONCRETE SHELTER BILL OF MATERIAL  
DRAWING NO.: 203058  
SHEET: 3 of 7

NOTE:  
ITEMS ARE SUBJECT TO CHANGE DUE TO AVAILABILITY  
AND EQUAL SUBSTITUTES WILL BE USED. ELECTRICAL  
OR MECHANICAL REQUIREMENTS MAY CHANGE DUE TO  
MANUFACTURER'S SPECIFICATIONS.

RELEASED  
MAY 4 2005  
VFP, INC.  
ENGINEERING

**TOLERANCES.**  
 1. DIMENSIONS ARE IN INCHES  
 UNLESS SPECIFIED OTHERWISE

STANDARD:  
 FRACTIONS ± 1/2"  
 DECIMALS ± 0.5"  
 ANGLES ± 3'

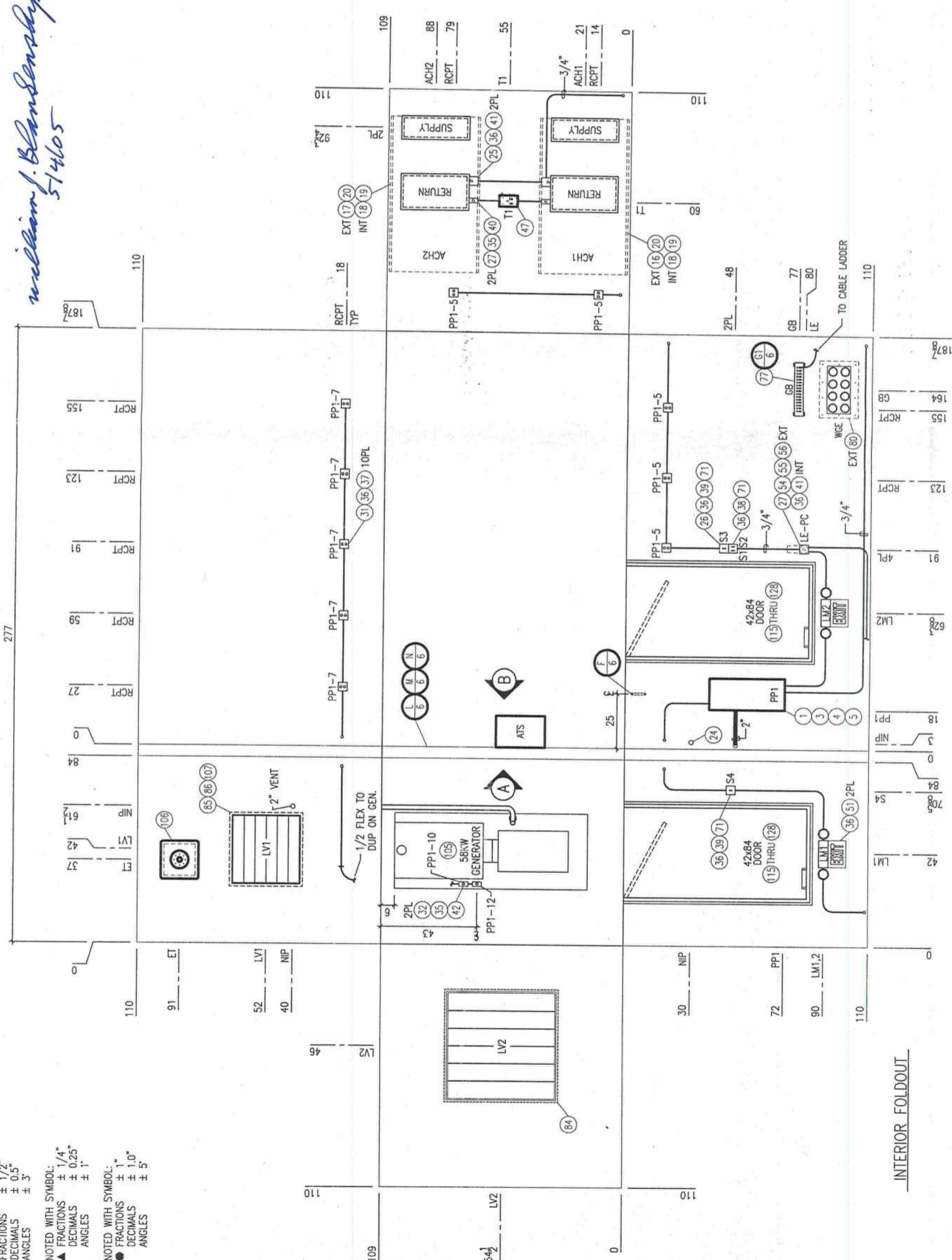
NOTED WITH SYMBOL:  
 ▲ FRACTIONS ± 1/4"  
 DECIMALS ± 0.25"  
 ANGLES ± 1'

NOTED WITH SYMBOL:  
 ● FRACTIONS ± 1.0"  
 DECIMALS ± 1.0"  
 ANGLES ± 5'

*William J. Blankenship*  
 5/14/05

**LEGEND**

- ACH1 - AIR CONDITIONER/HEATER #1
- ACH2 - AIR CONDITIONER/HEATER #2
- ATS - AUTOMATIC TRANSFER SWITCH
- CFE - CUSTOMER FURNISHED EQUIPMENT
- CIE - CUSTOMER INSTALLED EQUIPMENT
- CKT - CIRCUIT BREAKER
- CL - CABLE LADDER, 12"
- CLH - CABLE LADDER HANGER
- ET - EXHAUST THIMBLE
- GB - GROUND BAR
- LE - EXTERIOR LIGHT
- LF - FLOURESCENT LIGHT
- LM1,2 - EMERGENCY LIGHT
- LV1 - LOUVER, 30"
- LV2 - LOUVER, 48"
- PC - PHOTO CELL
- PL - PLACES
- PP1 - POWER PANEL #1 (UTILITY)
- RCPT - RECEPTACLE
- S1 - SWITCH #1 (INTERIOR "A")
- S2 - SWITCH #2 (INTERIOR "B")
- S3 - SWITCH #3 (EXTERIOR)
- S4 - SWITCH #4 (GENERATOR ROOM)
- T1 - THERMOSTAT (SET @ 72°)
- TYP - TYPICAL
- WGE - WAVEGUIDE ENTRY
- - JUNCTION BOX, 4 X 4
- - JUNCTION BOX, 2 X 4
- - REF PART LIST ITEM NUMBER
- - REF DWG NOTE
- - DUPLEX RCPT.
- - SINGLE RCPT.



**RELEASED**  
 MAY 4 2005  
 V.F.P., INC.  
 ENGINEERING

REVISIONS		
CHG. BY	APPR. BY	DATE

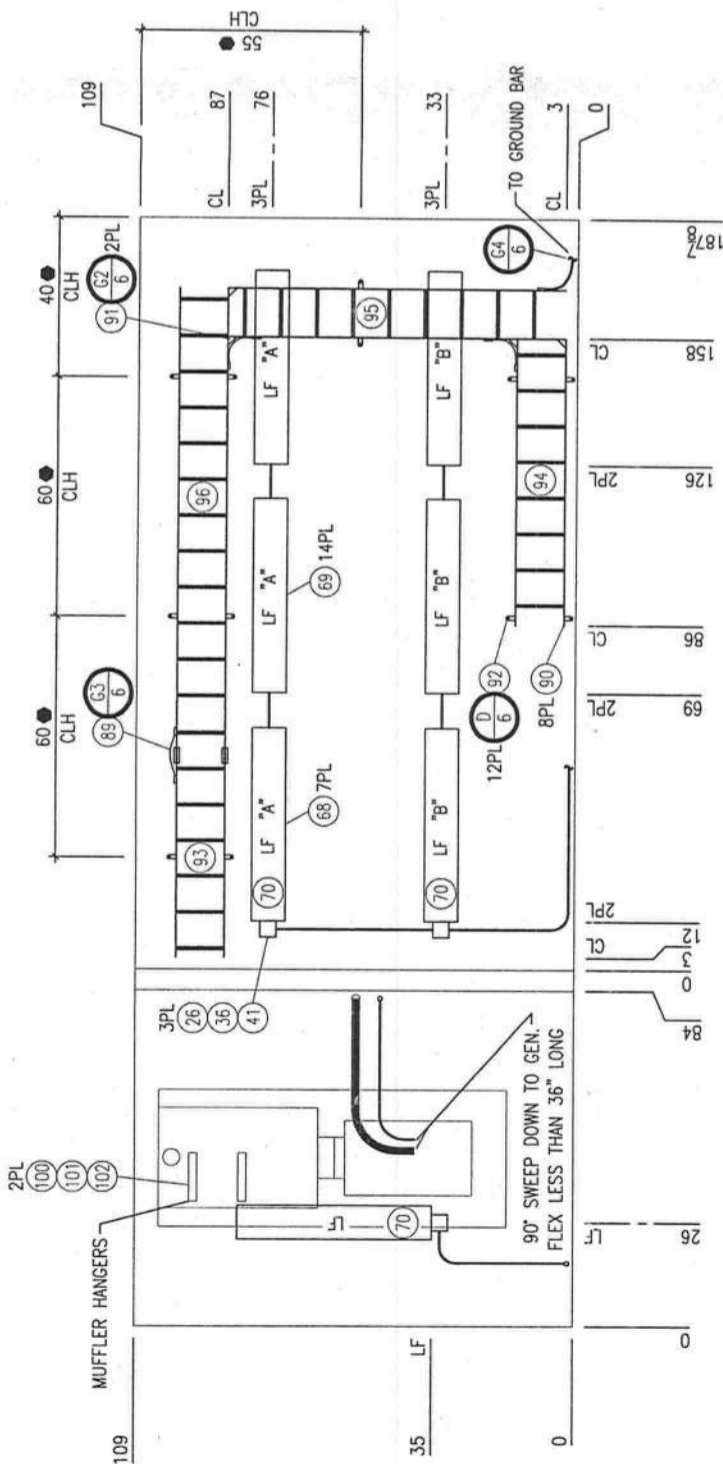
WILLIAM J. BLANKENSHIP, PE  
 5810 CRISPIN STREET, APT. 2G  
 ROANOKE, VIRGINIA 24019  
 PE LICENSE: STATE OF  
 FLORIDA # 56396

**VFP, INC.**  
 CORPORATE OFFICE  
 2840 Electric Road Suite A-201  
 Roanoke, Virginia 24018-3544  
 (540)977-0500 (540)977-5555 fax

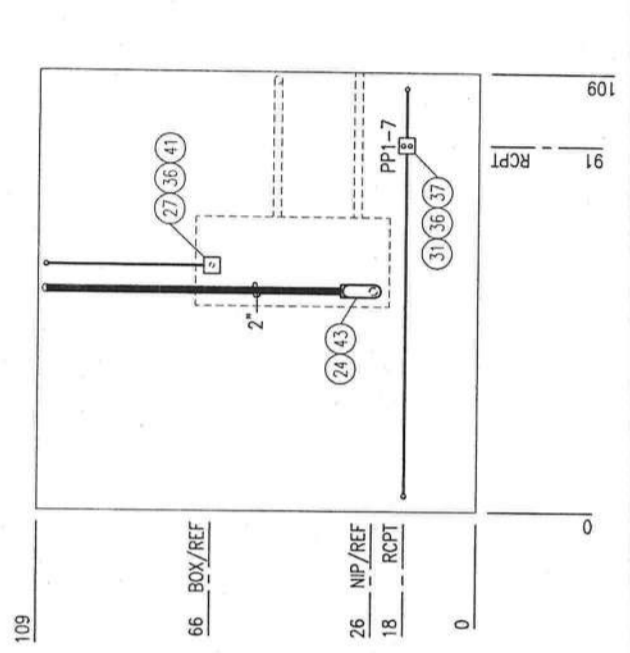
MANUFACTURING FACILITY  
 4954 Industrial Park  
 Duffield, Virginia 24244  
 (276)431-4000 (276)431-4220 fax  
 Except as may otherwise be indicated by contract, these drawings and concepts are the sole property of VFP, Inc., they are issued in strict confidence, and shall not be reproduced in whole or part without the written permission of VFP, Inc.

DATE	4/13/05
CHECKED BY	T. WILLIAMSON
APPROVED BY	<i>W. J. Blankenship</i>
DATE RELEASED	5/14/05
SIZE	B
DATE NO	53223
REV	-
PLOT SCALE	1/4"=1'-0"
MODEL	3058
TITLE	10'0" x 24'0" x 9'2" CONCRETE SHELTER INTERIOR FOLDOUT
DRAWING NO.	203058
SHEET	4 of 7

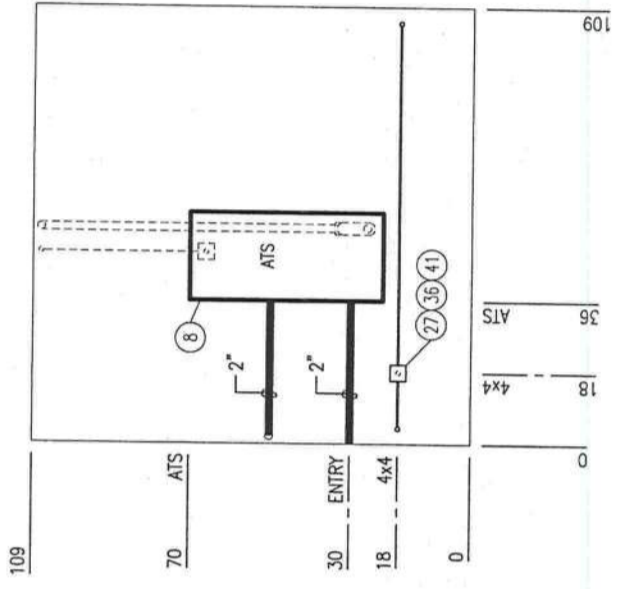
*William J. Blankenship*  
5/14/05



REFLECTED CEILING



INTERIOR WALL SIDE "A" - GENERATOR ROOM



INTERIOR WALL SIDE "B" - EQUIPMENT ROOM

**TOLERANCES**  
ALL DIMENSIONS ARE IN INCHES  
UNLESS SPECIFIED OTHERWISE

STANDARD:  
FRACTIONS ± 1/2"  
DECIMALS ± 0.5"  
ANGLES ± 3°

IF NOTED WITH SYMBOL:  
▲ FRACTIONS ± 1/4"  
DECIMALS ± 0.25"  
ANGLES ± 1°

IF NOTED WITH SYMBOL:  
● FRACTIONS ± 1"  
DECIMALS ± 1.0"  
ANGLES ± 5°

REVISIONS			
CHG. BY	APPR. BY	DATE	REV

WILLIAM J. BLANKENSHIP, PE  
5810 CRISPIN STREET, APT. 26  
ROANOKE, VIRGINIA 24019  
PE LICENSE: STATE OF  
FLORIDA # 56396

**VFP, INC.**

CORPORATE OFFICE  
2840 Electric Road Suite A-201  
Roanoke, Virginia 24018-3544  
(540)977-0500 (540)977-5555 fax

MANUFACTURING FACILITY  
4954 Industrial Park  
Duffield, Virginia 24244  
(276)431-4000 (276)431-4220 fax

Except as may otherwise be provided by contract, these drawings and concepts are the sole property of VFP, Inc. and shall remain confidential. No part shall be reproduced in whole or part without the written permission of VFP, Inc.

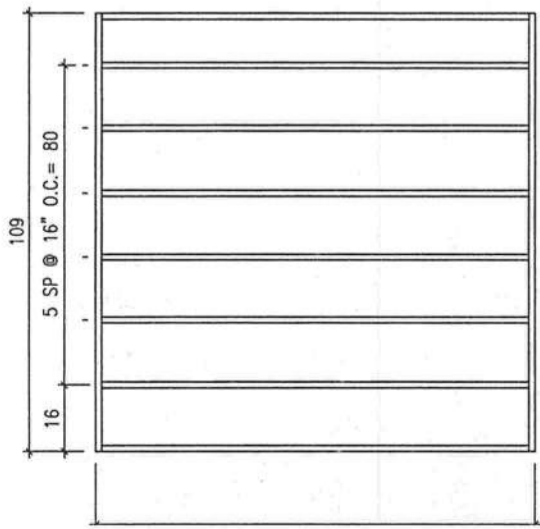
DRAWN BY T.I. WILLIAMSON	DATE 4/13/05
CHECKED BY <i>m. Blankenship</i>	DATE 4/22/05
APPROVED BY <i>W. Blankenship</i>	DATE RELEASED 5/13/05

SIZE B	CASE NO. 53223	REV. -
PLOT SCALE 1/4"=1'-0"	MODEL 3058	
TITLE 10'0" x 24'0" x 9'2" CONCRETE SHELTER REFLECTED CEILING		
DRAWING NO. 203058		
SHEET 5 OF 7		

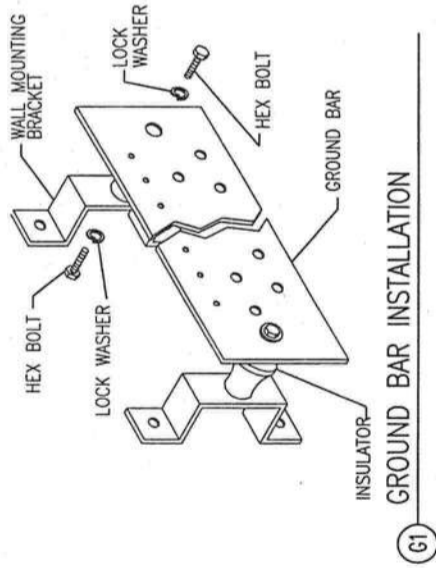
**RELEASED**  
MAY 4 2005  
VFP, INC.  
ENGINEERING

**Finishing Notes**

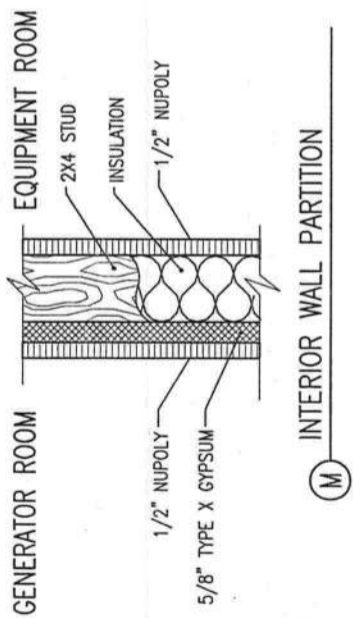
1. Refer to Fastening Schedule Drawing #101562.
2. See door casting sheet for door frame size and swing. Refer to sheet 3 for full door descriptions and options.
3. Refer to manufacturing work order for exterior and interior finish of building. Refer to detail C this page for floor covering.
4. Refer to interior layout sheets before routing interior sheathing for miscellaneous openings.



L INTERIOR WALL - FRAMING

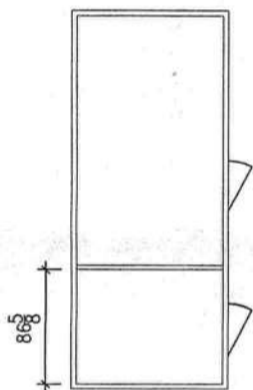


G1 GROUND BAR INSTALLATION

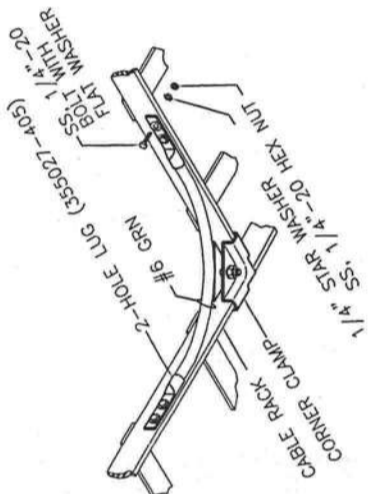


M INTERIOR WALL PARTITION

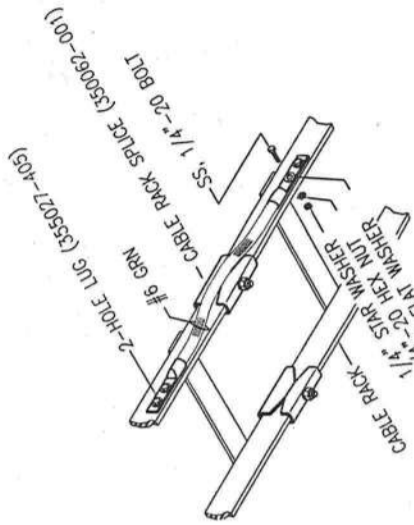
N PLAN VIEW FOR INTERIOR WALL



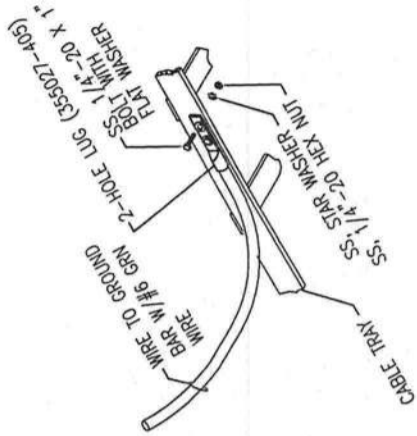
G2 CABLE LADDER CORNER BOND



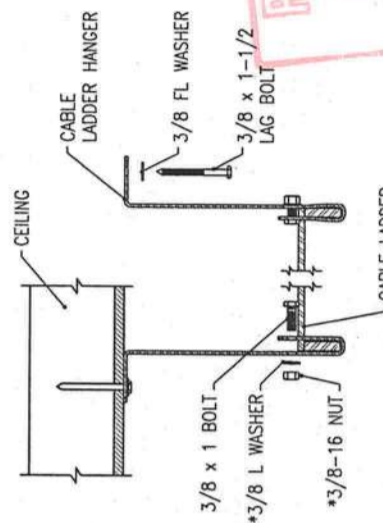
G3 CABLE LADDER BOND



G4 CABLE LADDER GROUND CONNECTION

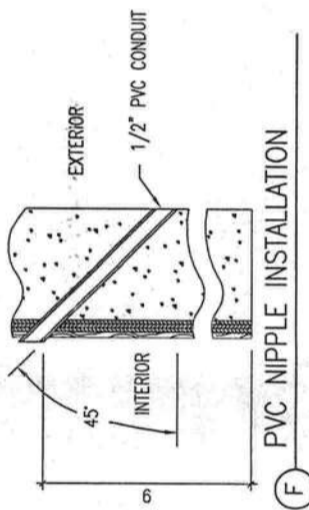


G5 CABLE LADDER INSTALLATION

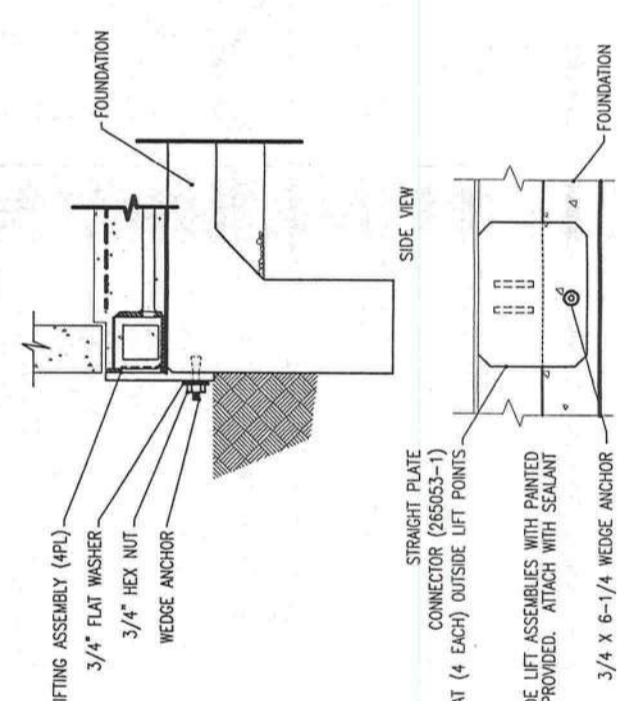


D CABLE LADDER INSTALLATION

\*(topped hangers do not require these items)

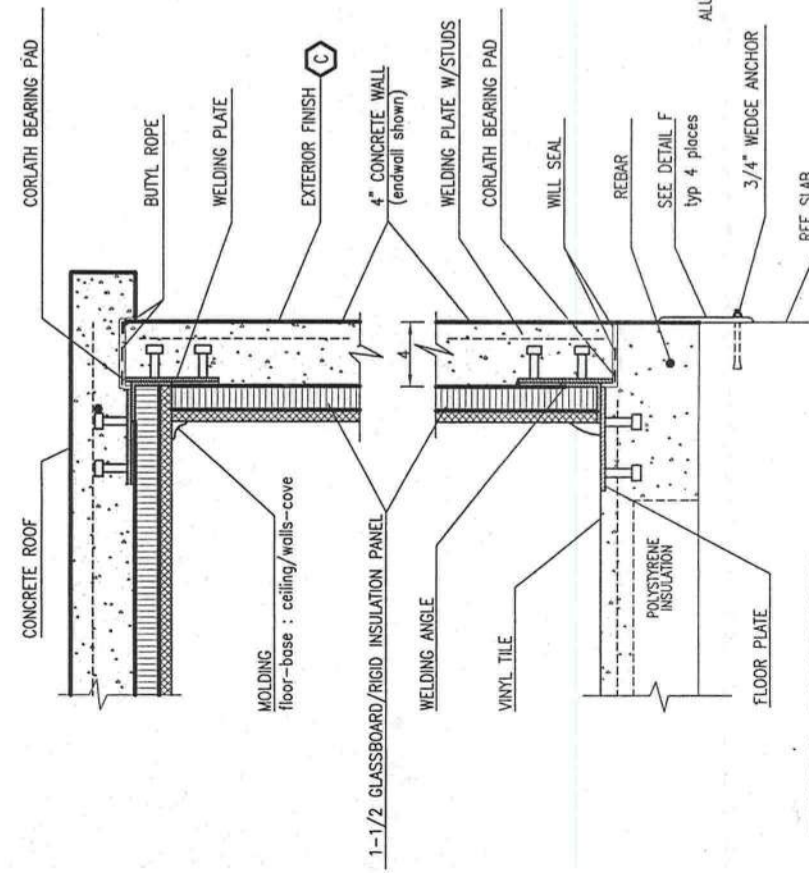


F PVC NIPPLE INSTALLATION



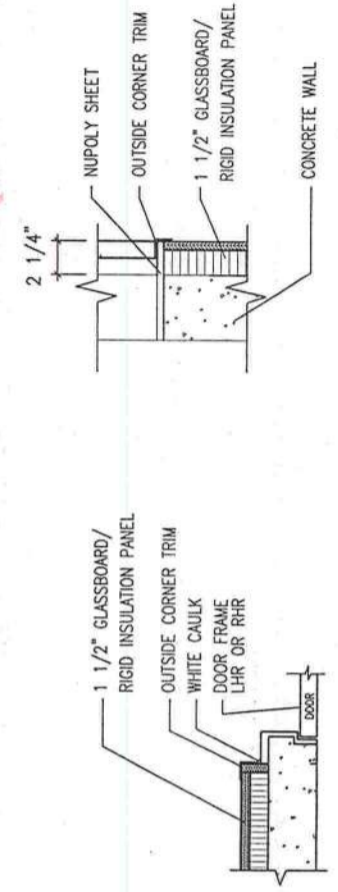
E BUILDING ATTACHMENT

elevation cut away - from detail c

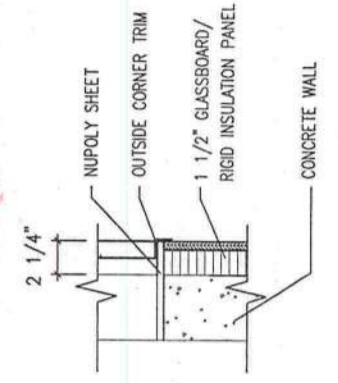


C BUILDING CONSTRUCTION

elevation cut-away



A DOOR OPENING



B WALL OPENING

**RELEASED**  
MAY 4 2005  
V.F.P. INC.  
ENGINEERING

WILLIAM J. BLANKENSHIP, PE  
5810 CRISPIN STREET, APT. 2G  
ROANOKE, VIRGINIA 24019  
PE LICENSE: STATE OF FLORIDA # 56396

**VFP, INC.**

**CORPORATE OFFICE**  
2840 Electric Road Suite A-201  
Roanoke, Virginia 24018-3544  
(540)977-0500 (540)977-5555 fax

**MANUFACTURING FACILITY**  
4954 Industrial Park  
Duffield, Virginia 24244  
(276)431-4000 (276)431-4220 fax

Except as may otherwise be provided by contract, the drawings and specifications prepared by VFP, Inc. are the property of VFP, Inc. and shall not be reproduced in whole or part without the written permission of VFP, Inc.

DATE	4/13/05
CHECKED BY	T.T. WILLIAMSON
DATE	4/13/05
APPROVED BY	<i>W. J. Blankenship</i>
DATE RELEASED	4/13/05
DRAWING NOT TO SCALE	
SIZE	B
CAGE NO.	53223
REV.	3058
PLOT SCALE	1/4" = 10'
TITLE	10'0" x 24'0" x 9'2" CONCRETE SHELTER CONSTRUCTION DETAILS
DRAWING NO.	203058
SHEET	6 of 7

CHG. BY	APPR. BY	DATE	REV

*William J. Blankenship*  
514105

**PACK-UP MATERIALS**

(IN ADDITION TO ITEMS FROM PACK-UP INSTRUCTIONS)

ITEM	QTY	U/M	PART NO.	DESCRIPTION
1	6	EA	101089-008	VINYL, TILE, GRAY
2	1	EA	165118-001	CAULKING GUN
3	1	TB	160120-003	CAULK, URETHANE, TAN
4	1	GL	160245-001	TAMMSCOAT, TAN
5	2	EA	178010-003	PAINT BRUSH, 3"
6	4	EA	34464	BOLT, ANCHOR, 3/4 DIA. x 6-1/4
7	34	EA	160153-001	BEARING SHIM
8	4	EA	285053-1	STRAIGHT PLATE TIEDOWN, 9 x 12 x 1/2

**PACK-UP INSTRUCTIONS FOR PRE-INSTALLED ITEMS**

- ITEMS BELOW APPLY TO THIS SHIPMENT.
  - REMOVE AND/OR PACK AWNING FROM THE DOORWAY.
  - REMOVE AND/OR PACK EXTERIOR LIGHT, GLOBE, PHOTO CELL AND BULB FROM THE SIDE OF THE SHELTER.
  - SECURE 2 (QTY) OF EXTERIOR DOOR(S).
  - INCLUDE EQUIPMENT WARRANTIES AND OTHER PERTINENT INFORMATION IN LITERATURE HOLDER.
  - INSTALL VFP, INC DATA PLATE ON THE HINGE SIDE OF ENTRANCE DOOR.
  - INSTALL THIRD PARTY INSPECTION INSIGNIA ON THE FRONT OF DISTRIBUTION PANEL.
- ALL DRAWINGS IN DRAWING LIST ARE TO BE INCLUDED IN THE SHELTER PACK-UP MATERIALS.
- SEAL ALL OPENINGS PRIOR TO SHIPMENT.
- PLACE ALL PACK-UP MATERIALS AS CLOSE TO DOOR AS POSSIBLE AND SECURE.

**FIELD SET-UP INSTRUCTIONS**

ITEMS CHECKED MUST BE INSTALLED AFTER DELIVERY OF SHELTER. REFER TO OWNER'S MANUALS AND/OR DRAWINGS INDICATED.	REFERENCE DWG #
TRANSPORT SHELTER (24 FT AND LONGER)	277017
SETUP INSTRUCTIONS FOR CONCRETE SHELTERS 24FT UP/STRAIGHT PLATE	277034
INSTALL EXTERIOR LIGHT, GLOBE, AND INCANDESCENT BULB	277005
INSTALL ANY HOODS OR AWNINGS	277006

**CONCRETE SHIPPING INSTRUCTIONS**

**DRAWING LIST**

DRAWING NO.	SHEET	TITLE OF DRAWING
203058	1 OF 7	PANEL SCHEDULE & ONE LINE
203058	2 OF 7	EXTERIOR ELEVATIONS
203058	3 OF 7	BILL OF MATERIAL
203058	4 OF 7	INTERIOR FOLDOUT
203058	5 OF 7	REFLECTED CEILING
203058	6 OF 7	CONSTRUCTION DETAILS
203058	7 OF 7	SHIPPING DETAILS
203058-901	1 OF 1	SERVICE MANUAL
272011	1 OF 1	FOUNDATION DRAWING (ANGLE TIE DOWN)
473141	1 OF 1	HVAC DRAWING (LL357 SERIES or TEC 20)
101116	1 OF 1	GENERAL NOTES

REVISIONS			
CHG. BY	APPR. BY	DATE	REV

*William J. Blankenship*  
5/4/05

WILLIAM J. BLANKENSHIP, PE  
5810 CRISPIN STREET, APT. 2G  
ROANOKE, VIRGINIA 24019  
PE LICENSE: STATE OF FLORIDA # 56396

**VFP, INC.**

CORPORATE OFFICE  
2840 Electric Road Suite A-201  
Roanoke, Virginia 24018-3544  
(540)977-0500 (540)977-5555 fax

MANUFACTURING FACILITY  
4954 Industrial Park  
Duffield, Virginia 24244  
(276)431-4000 (276)431-4220 fax

Except as may otherwise be provided by contract, these drawings and concepts are the sole property of VFP, Inc. and shall remain confidential. No part shall not be reproduced in whole or part without the written permission of VFP, Inc.

DRAWN BY	T.T. WILLIAMSON	DATE	4/25/05
CHECKED BY	<i>M. Blum</i>	DATE	4/27/05
APPROVED BY	<i>W. Blankenship</i>	DATE RELEASED	5/3/05
DRAWING NOT TO SCALE			
SIZE	B	CAGE NO.	53223
PLAT SCALE	1/4"=1'0"	MODEL	3058
TITLE			
10'0" x 24'0" x 9'2" CONCRETE SHELTER SHIPPING DETAILS			
DRAWING NO.			203058
SHEET			7 of 7



**NOTES:**

**GENERAL**

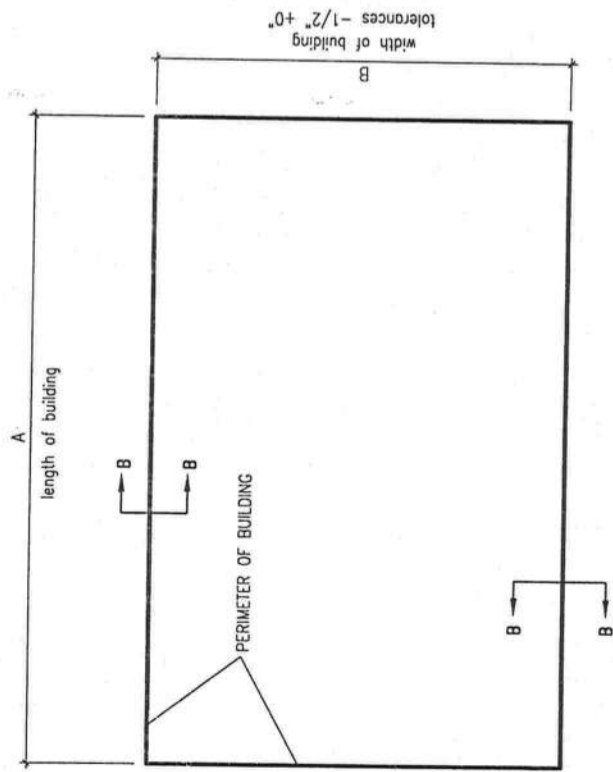
- 1.1 All dimensions are specified in inches unless otherwise noted.
- 1.2 Design and installation of foundation by local engineer or architect. This is only a suggested foundation plan.
- 1.3 Foundation is designed for 2000 psf bearing. However, it is the customer's responsibility to verify the adequacy of the foundation from soil boring data.
- 1.4 Slab type foundation is not recommended for areas with extreme frost conditions or where high water tables are present. These conditions could cause differential settlements in the soil beneath the foundation resulting in structural cracks.
- 1.5 Perimeter footing must be a minimum foundation depth of 24" or per local frost line on undisturbed soil.
- 1.6 Locate wedge anchors other shelter is located on slab to correctly align with installed anchor plate. Do not install wedge anchor before setting shelter on foundation.

**MATERIAL**

- 2.1 Concrete shall have a minimum compressive strength of 3000 psi @ 28 days and shall be installed in accordance with the ACI-318 Building Code requirements for Reinforced Concrete.
- 2.2 Reinforcing bars shall conform to ASTM-A65 grade 60 specifications and be detailed in accordance with ACI-318.
- 2.3 Test cylinders shall be molded and laboratory cured in accordance with ASTM C31. Three cylinders shall be taken for each day's concrete placement. Cylinders shall be tested in accordance with ASTM C39.

**TOLERANCES**

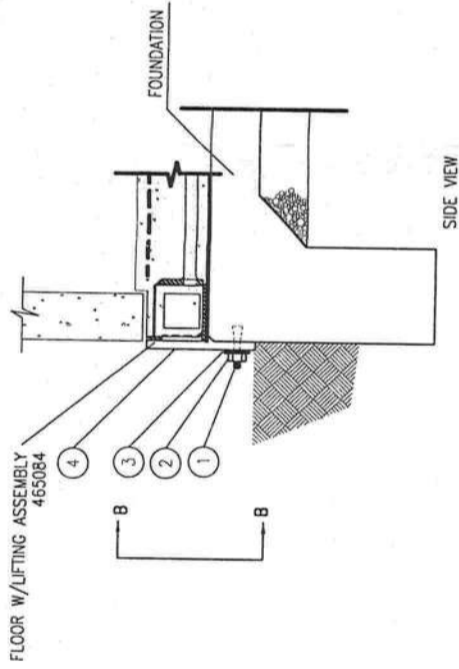
- 3.1 Tops of concrete foundation must be within 0.02' per foot of elevation specified by the customer.



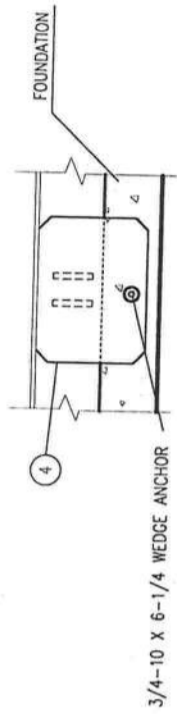
**C FOUNDATION PLAN**  
foundation plan view  
SCALE: 1/4"=1'-0"  
FIELD WORK

272011-096 36

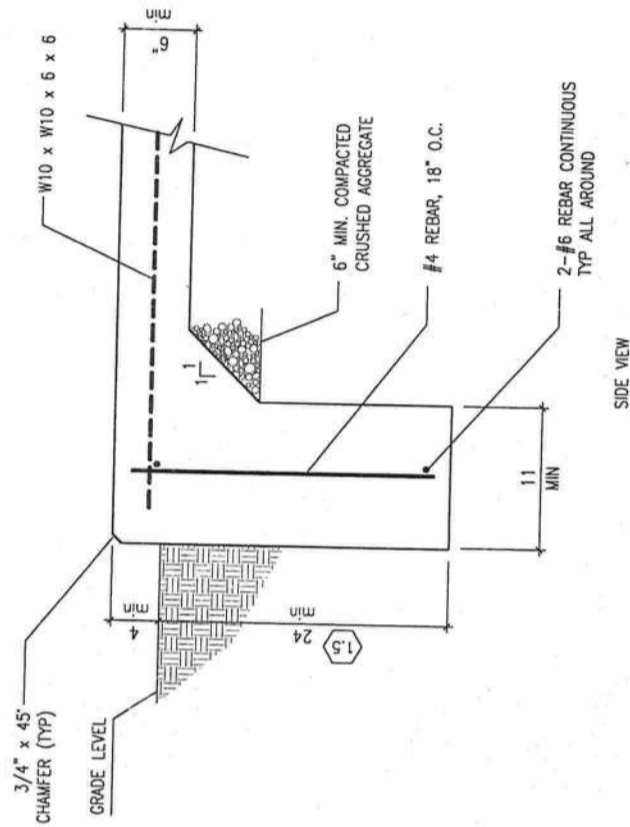
WIDTH IN INCHES  
LENGTH IN FEET



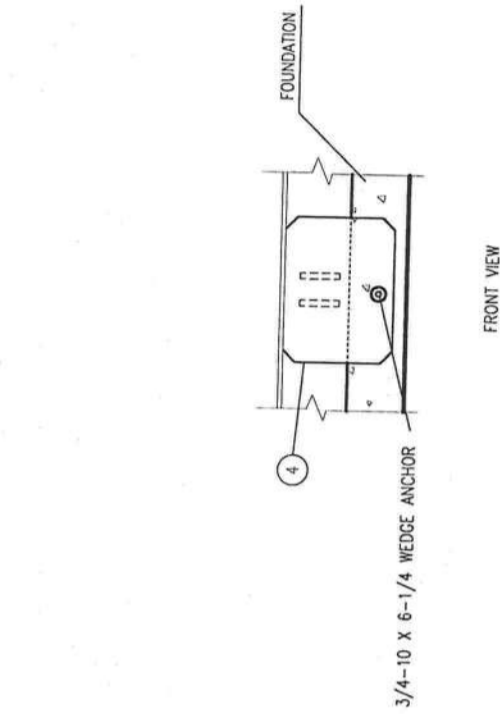
**A BUILDING ATTACHMENT**  
section view  
SCALE: 1/2"=1'-0"  
FIELD WORK



**B TIE DOWN PLATE**  
front view  
SCALE: 3/4"=1'-0"  
FIELD WORK



**D CONTINUOUS PERIMETER FOOTING**  
section view  
SCALE: 3/4"=1'-0"  
FIELD WORK



**FLOOR W/LIFTING ASSEMBLY 465084**  
section view  
SCALE: 3/4"=1'-0"  
FIELD WORK

REVISIONS			
CHG. BY	APPR. BY	DATE	REV
SRS	SRS	11/04/99	A
FPW	WJBL	03/01/02	B

UPDATED TIE DOWN INFORMATION.  
UPDATED STANDARDS.  
*William J. Blankenship*  
514105

**WILLIAM J. BLANKENSHIP, P.E.**  
5810-2G CRISPIN STREET  
ROANOKE, VA 24019  
FLORIDA PE LICENSE #56396

**VFP, INC.**

CORPORATE OFFICE  
176 EastPark Drive  
Roanoke, Virginia 24019  
(540)977-0500 (540)977-5555 fax

CONCRETE SHELTERS (PLANT #2)  
4954 Industrial Park  
Duffield, Virginia 24244  
(276)431-4000 (276)431-4220 fax

Except as may otherwise be indicated by notation, these drawings and concepts are the sole property of VFP, Inc. they are issued in strict confidence, and shall remain the property of VFP, Inc. in whole or part without the written permission of VFP, Inc.

DATE	02/24/98
CHECKED BY	S. SHUMATE
DATE	02/24/98
APPROVED BY	S. SHUMATE
DATE	06/25/98
DO NOT SCALE DRAWING	
SIZE	B
CAGE NO	53223
REV	B
SCALE	1/4"=1'-0"
TITLE	SLAB FOUNDATION GENERAL USE FLAT PLATE TIE-DOWN
DRAWING NO.	272011
SHEET	1 of 1

**RELEASED**  
MAY 4 2005  
VFP, INC.  
ENGINEERING

ITEM NO.	DESCRIPTION	QTY.	UNIT OF MEASURE	PART NO.
4	PLATE, 9 x 12 x 1/2			
3	FLAT WASHER, 3/4			
2	HEX NUT, 3/4-10			
1	WEDGE ANCHOR, 3/4-10 x 6 1/4			