

## STANDARD HEADER SCHEDULE

### 0'-0" UP TO 6'-0" OPENINGS

DOUBLE 2x8 No. 2 SOUTHERN PINE WITH 1/2" OSB SOLID CONTINUOUS SPACER GLUED AND NAILED WITH 10d x 0.128" x 3" NAILS IN 2 ROWS @ 12" O.C. STAGGERED EACH SIDE WITH 1 - SIMPSON MSTA18 TOP AND 1 - SIMPSON SPH4R BOTTOM EACH SIDE OF OPENING WITH 1 - HEADER STUD AND 1 FULL HEIGHT STUD EACH SIDE OF OPENING

### 6'-0" UP TO 9'-0" OPENINGS

DOUBLE 2x12 No. 2 SOUTHERN PINE WITH 1/2" OSB SOLID CONTINUOUS SPACER GLUED AND NAILED WITH 10d x 0.128" x 3" NAILS IN 2 ROWS @ 12" O.C. STAGGERED EACH SIDE WITH 1 - SIMPSON MSTA24 TOP AND 2 - SIMPSON SPH4R BOTTOM EACH SIDE OF OPENING WITH 1 - HEADER STUD AND 2 FULL HEIGHT STUDS EACH SIDE OF OPENING

### 9'-0" UP TO 16'-0" OPENINGS

DOUBLE 2x12 No. 2 SOUTHERN PINE WITH 1/2" OSB SOLID CONTINUOUS SPACER GLUED AND NAILED WITH 10d x 0.128" x 3" NAILS IN 2 ROWS @ 12" O.C. STAGGERED EACH SIDE WITH 3 - SIMPSON MSTA18 EACH SIDE OF OPENING WITH 2 - HEADER STUDS AND 3 FULL HEIGHT STUDS EACH SIDE OF OPENING

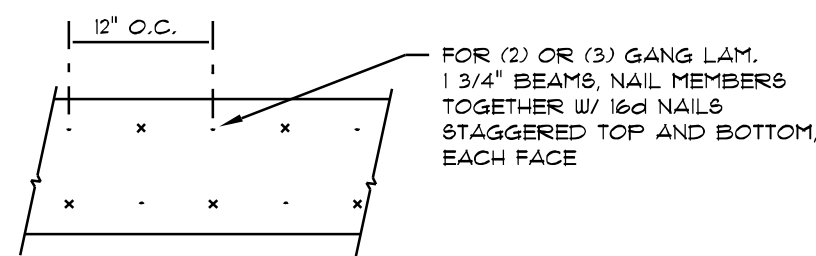
### 16'-0" GARAGE DOOR OPENINGS

2 FLY 1 1/2" x 11 7/8" 2.0E MICROLAMM LVL HEADER GLUED AND NAILED WITH 10d x 0.128" x 3" NAILS IN 2 ROWS @ 12" O.C. STAGGERED EACH SIDE WITH 3 - SIMPSON MSTA18 EACH SIDE OF OPENING WITH 2 - HEADER STUDS AND 3 FULL HEIGHT STUDS EACH SIDE OF OPENING

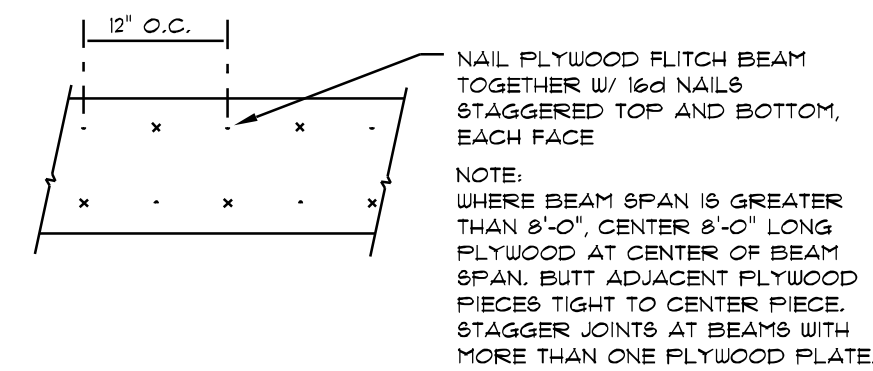
**NOTE!**  
SHEATH ROOF W/ 1/2" CDX PLYWOOD PLACED W/ LONG DIMENSION PERPENDICULAR TO THE ROOF TRUSSES, SECURE TO FRAMING W/ 8d NAILS - AS PER DETAIL ON SHEET SD.4

**NOTE!**  
THE DESIGN WIND SPEED FOR THIS PROJECT IS 130 MPH PER FBC 16-03 AND LOCAL JURISDICTION REQUIREMENTS

**NOTE!**  
ANCHOR GIRDER TRUSSES TO HEADER WITH 2 "SIMPSON" LGT2, 3 OR 4). ANCHOR HEADER TO KING STUDS W/ 2 "SIMPSON" ST2 EA. END - TYP., T.O.



MULTIPLE GANG LAM. DETAIL  
NOT TO SCALE



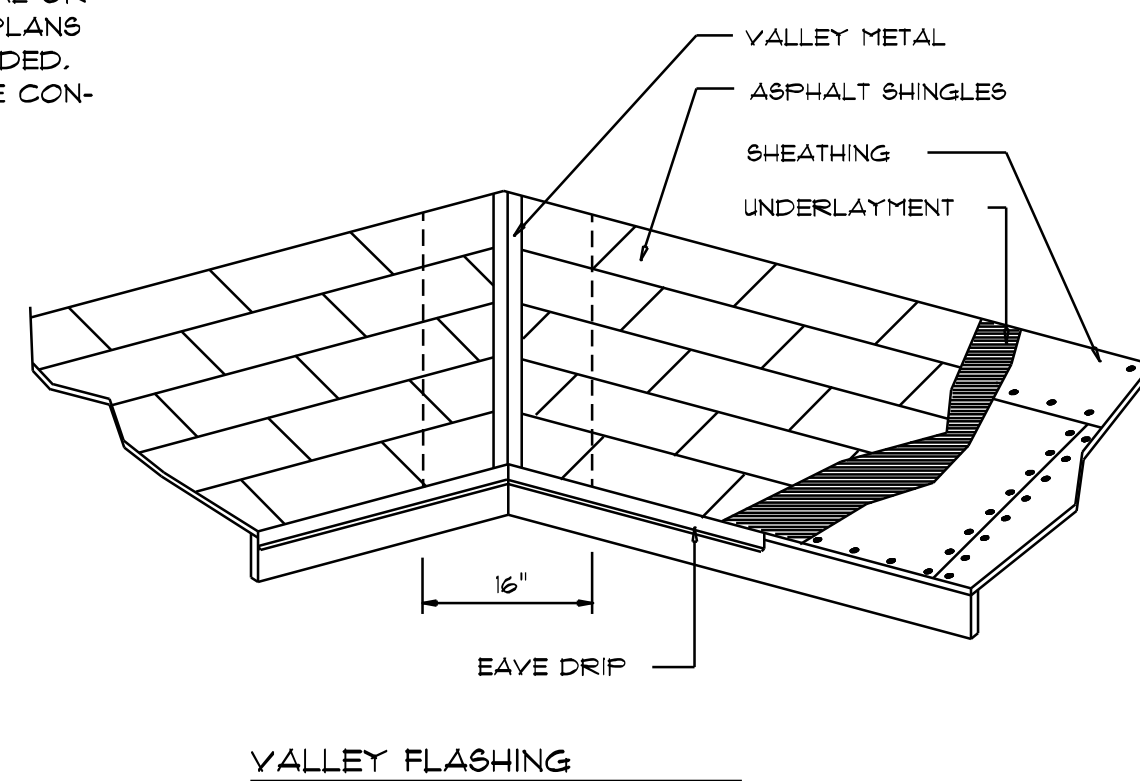
PLYWOOD FLITCH BEAM DETAIL  
NOT TO SCALE

## B/U Beam DETAILS

SCALE: NONE

## WOOD STRUCTURAL NOTES

- TEMPORARY BRACING OF THE STRUCTURE DURING ERECTION, REQUIRED FOR SAFE AND STABLE CONSTRUCTION, SHALL BE THE SOLE RESPONSIBILITY OF THE CONTRACTOR SO ENGAGED. TEMPORARY & PERMANENT BRACING OF ROOF TRUSSES SHALL BE AS PER THE STANDARD GUIDELINES OF THE "TRUSS PLATE INSTITUTE".
- ALL TRUSSES SHALL BE DESIGNED BY A LICENSED PROFESSIONAL ENGINEER & SHALL BE SIGNED AND SEALED BY SAME. TRUSS DESIGN SHALL INCLUDE PLACEMENT PLANS, TRUSS DETAILS, TRUSS TO TRUSS CONNECTIONS & THE STANDARD SPECIFICATIONS & RECOMMENDATIONS OF INSTALLATION OF THE "TRUSS PLATE INSTITUTE".
- WOOD STUDS IN EXTERIOR WALLS & INTERIOR BEARING WALLS SHALL BE NOT LESS THAN No. 2 HEM-FIR OR BETTER.
- CONNECTORS FOR WOOD FRAMING SHALL BE GALVANIZED METAL OR BLACK METAL AS MANUFACTURED OR AS CALLED FOR IN THE PLANS AND BE OF A DESIGN SUITABLE FOR THE LOADS AND USE INTENDED. REFER TO THE JOINT REINFORCEMENT SCHEDULE FOR PRINCIPLE CONNECTIONS.



VALLEY FLASHING

### ROOFING METALS for FLASHING/ROOFING MINIMUM THICKNESS REQUIREMENTS

| MATERIAL                      | MINIMUM THICKNESS (in) | GAGE                 | WEIGHT (OZ.) |
|-------------------------------|------------------------|----------------------|--------------|
| COPPER                        |                        |                      | 16           |
| ALUMINUM                      | 0.024                  |                      |              |
| STAINLESS STEEL               |                        | 28                   |              |
| GALVANIZED STEEL              | 0.0175                 | 26 (ZINC COATED G30) |              |
| ZINC ALLOY LEAD PAINTED TERNE | 0.021                  |                      | 40<br>20     |

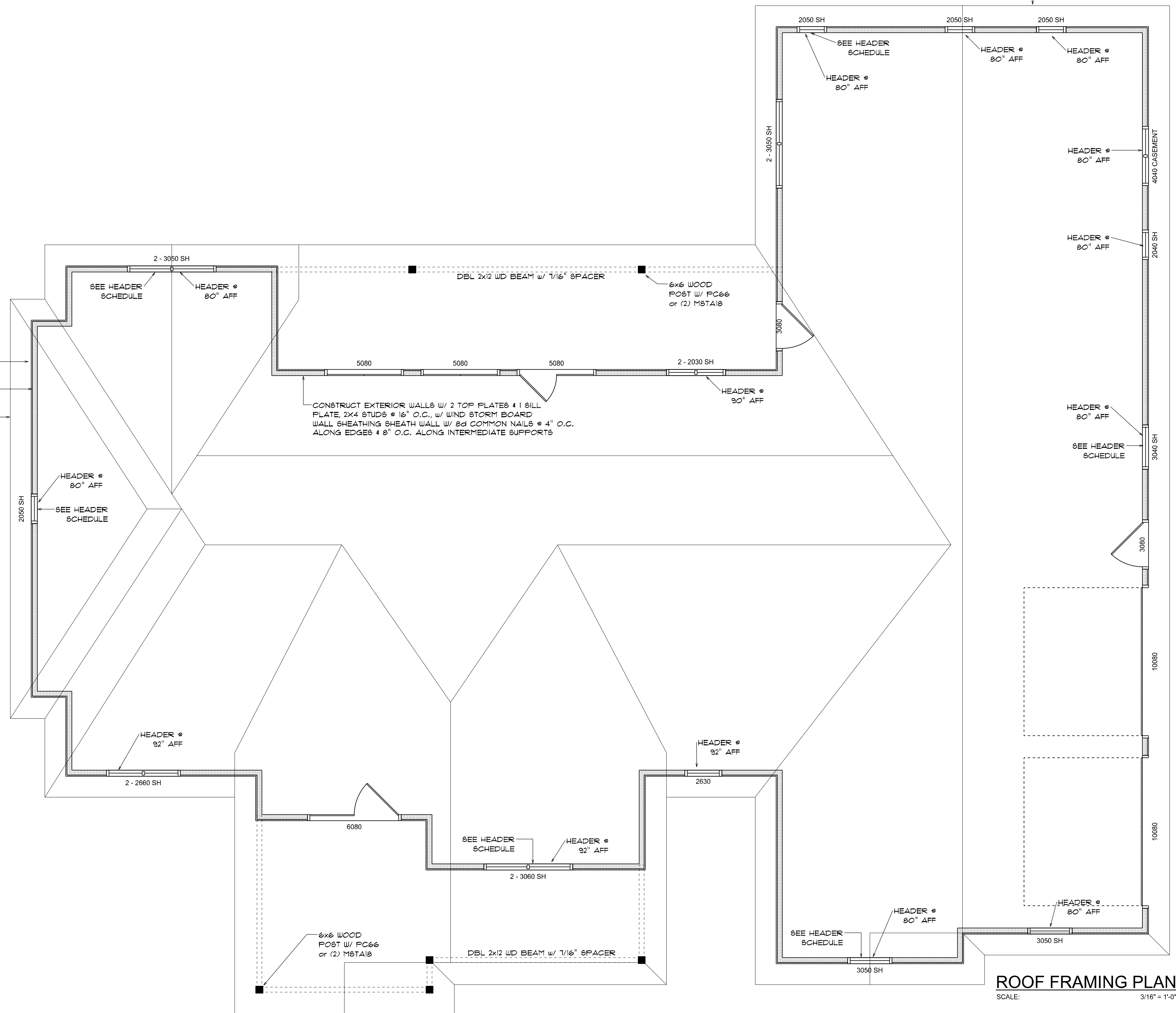
### ROOF PLAN NOTES

- R-1 SEE ELEVATIONS FOR ROOF PITCH
- R-2 ALL OVERHANG 18" (12" on gables) UNLESS OTHERWISE NOTED
- R-3 PROVIDE ATTIC VENTILATION IN ACCORDANCE WITH SCHEDULE ON SD.3
- R-4 SEE EXTERIOR ELEVATIONS AND FLOOR PLANS TO VERIFY PLATE AND HEEL HEIGHTS
- R-5 MOVE ALL VENTS AND OTHER ROOF PENETRATIONS TO REAR

### Roofing/Flashing DETS.

SCALE: NONE

2x6 SUB-FASCIA, TYPICAL @ ALL TRUSS EAVES & GABLE ENDS



ROOF FRAMING PLAN  
SCALE: 3/16" = 1'-0"

| REVISIONS       |
|-----------------|
| Aug. 19th, 2021 |

CUSTOM HOME FOR:  
**GARY & RACHEL LIBERTY**  
COLUMBIA COUNTY, FLORIDA

**NICHOLAS PAUL GEISLER ARCHITECT**  
115 NW Biscay Blvd.  
Lakeland, FL 34055

SHEET NUMBER  
**S.2**  
OF 4 SHEETS

Nicholas P. Geisler  
CN = Nicholas P. Geisler  
email = ngeisler47@gmail.com  
C + US O = Nicholas P. Geisler  
2021.08.20 13:58:16 -05'00'  
AR0007005